



**HAL**  
open science

## Guidelines for Biobanking of Bone Marrow Adipose Tissue and Related Cell Types: Report of the Biobanking Working Group of the International Bone Marrow Adiposity Society

Stephanie Lucas, Michaela Tencerova, Benoit von der Weid, Thomas Levin Andersen, Camille Attané, Friederike Behler-Janbeck, William P Cawthorn, Kaisa K Ivaska, Olaia Naveiras, Izabela Podgorski, et al.

### ► To cite this version:

Stephanie Lucas, Michaela Tencerova, Benoit von der Weid, Thomas Levin Andersen, Camille Attané, et al.. Guidelines for Biobanking of Bone Marrow Adipose Tissue and Related Cell Types: Report of the Biobanking Working Group of the International Bone Marrow Adiposity Society. *Frontiers in Endocrinology*, 2021, 12, pp.744527. 10.3389/fendo.2021.744527 . hal-03854231

**HAL Id: hal-03854231**

**<https://hal.science/hal-03854231v1>**

Submitted on 15 Nov 2022

**HAL** is a multi-disciplinary open access archive for the deposit and dissemination of scientific research documents, whether they are published or not. The documents may come from teaching and research institutions in France or abroad, or from public or private research centers.

L'archive ouverte pluridisciplinaire **HAL**, est destinée au dépôt et à la diffusion de documents scientifiques de niveau recherche, publiés ou non, émanant des établissements d'enseignement et de recherche français ou étrangers, des laboratoires publics ou privés.



# Guidelines for Biobanking of Bone Marrow Adipose Tissue and Related Cell Types: Report of the Biobanking Working Group of the International Bone Marrow Adiposity Society

## OPEN ACCESS

### Edited by:

Jason Horton,  
Upstate Medical University,  
United States

### Reviewed by:

Sang Wan Kim,  
Seoul National University, South Korea  
Yong-Can Huang,  
Peking University Shenzhen  
Hospital, China

### \*Correspondence:

Bram C. J. van der Eerden  
b.vandereerden@erasmusmc.nl

†These authors have contributed  
equally to this work

### Specialty section:

This article was submitted to  
Bone Research,  
a section of the journal  
Frontiers in Endocrinology

**Received:** 20 July 2021

**Accepted:** 24 August 2021

**Published:** 27 September 2021

### Citation:

Lucas S, Tencerova M,  
von der Weid B, Andersen TL,  
Attané C, Behler-Janbeck F,  
Cawthorn WP, Ivaska KK, Naveiras O,  
Podgorski I, Reagan MR and  
van der Eerden BCJ (2021) Guidelines  
for Biobanking of Bone Marrow  
Adipose Tissue and Related Cell  
Types: Report of the Biobanking  
Working Group of the International  
Bone Marrow Adiposity Society.  
*Front. Endocrinol.* 12:744527.  
doi: 10.3389/fendo.2021.744527

**Stephanie Lucas**<sup>1†</sup>, **Michaela Tencerova**<sup>2†</sup>, **Benoit von der Weid**<sup>3,4,5†</sup>,  
**Thomas Levin Andersen**<sup>6,7,8,9</sup>, **Camille Attané**<sup>10,11</sup>, **Friederike Behler-Janbeck**<sup>12,13</sup>,  
**William P. Cawthorn**<sup>14</sup>, **Kaisa K. Ivaska**<sup>15</sup>, **Olaia Naveiras**<sup>5,16</sup>, **Izabela Podgorski**<sup>17</sup>,  
**Michaela R. Reagan**<sup>18,19</sup> and **Bram C. J. van der Eerden**<sup>20\*</sup> *the Biobanking Working Group  
for the International Bone Marrow Adiposity Society (BMAS)*

<sup>1</sup> Marrow Adiposity and Bone Lab-MABLab ULR4490, Univ. Littoral Côte d'Opale, Boulogne-sur-Mer, Univ. Lille, CHU Lille, Lille, France, <sup>2</sup> Molecular Physiology of Bone, Institute of Physiology of the Czech Academy of Sciences, Prague, Czechia, <sup>3</sup> School of Life Sciences, École Polytechnique Fédérale de Lausanne, Lausanne, Switzerland, <sup>4</sup> Swiss Institute of Bioinformatics, Lausanne, Switzerland, <sup>5</sup> Department of Biomedical Sciences, Faculty of Biology and Medicine, Université de Lausanne, Lausanne, Switzerland, <sup>6</sup> Clinical Cell Biology, Department of Pathology, Odense University Hospital, Odense, Denmark, <sup>7</sup> Clinical Cell Biology, Pathology Research Unit, Department of Clinical Research, University of Southern Denmark, Odense, Denmark, <sup>8</sup> Department of Molecular Medicine, University of Southern Denmark, Odense, Denmark, <sup>9</sup> Department of Forensic Medicine, Aarhus University, Aarhus, Denmark, <sup>10</sup> Institute of Pharmacology and Structural Biology, Université de Toulouse, CNRS UMR 5089, Toulouse, France, <sup>11</sup> Equipe labellisée Ligue contre le cancer, Toulouse, France, <sup>12</sup> Department of Biochemistry and Molecular Cell Biology, University Medical Center Hamburg-Eppendorf, Hamburg, Germany, <sup>13</sup> Department of Orthopedics, University Medical Center Hamburg-Eppendorf, Hamburg, Germany, <sup>14</sup> British Heart Foundation Centre for Cardiovascular Science, The Queen's Medical Research Institute, University of Edinburgh, Edinburgh, United Kingdom, <sup>15</sup> Institute of Biomedicine, University of Turku, Turku, Finland, <sup>16</sup> Hematology Service, Departments of Oncology and Laboratory Medicine, Lausanne University Hospital (CHUV), Université de Lausanne, Lausanne, Switzerland, <sup>17</sup> Department of Pharmacology, Wayne State University School of Medicine and Karmanos Cancer Institute, Detroit, MI, United States, <sup>18</sup> Center for Molecular Medicine, Maine Medical Center Research Institute, Scarborough, ME, United States, <sup>19</sup> Graduate School for Biomedical Science, Tufts University, Boston, MA, United States, <sup>20</sup> Laboratory for Calcium and Bone Metabolism, Department of Internal Medicine, Erasmus University Medical Center, Rotterdam, Netherlands

Over the last two decades, increased interest of scientists to study bone marrow adiposity (BMA) in relation to bone and adipose tissue physiology has expanded the number of publications using different sources of bone marrow adipose tissue (BMAT). However, each source of BMAT has its limitations in the number of downstream analyses for which it can be used. Based on this increased scientific demand, the International Bone Marrow Adiposity Society (BMAS) established a Biobanking Working Group to identify the challenges of biobanking for human BMA-related samples and to develop guidelines to advance establishment of biobanks for BMA research. BMA is a young, growing field with increased interest among many diverse scientific communities. These bring new perspectives and important biological questions on how to improve and build an international community with biobank databases that can be used and shared all over the world. However, to create internationally accessible biobanks, several practical and

legislative issues must be addressed to create a general ethical protocol used in all institutes, to allow for exchange of biological material internationally. In this position paper, the BMAS Biobanking Working Group describes similarities and differences of patient information (PIF) and consent forms from different institutes and addresses a possibility to create uniform documents for BMA biobanking purposes. Further, based on discussion among Working Group members, we report an overview of the current isolation protocols for human bone marrow adipocytes (BMAd) and bone marrow stromal cells (BMSCs, formerly mesenchymal), highlighting the specific points crucial for effective isolation. Although we remain far from a unified BMAd isolation protocol and PIF, we have summarized all of these important aspects, which are needed to build a BMA biobank. In conclusion, we believe that harmonizing isolation protocols and PIF globally will help to build international collaborations and improve the quality and interpretation of BMA research outcomes.

**Keywords:** bone marrow adiposity, bone marrow adipocytes, bone marrow stromal cells, biobanking, cell isolation protocols, international research networks, patient information, clinical studies

## 1 INTRODUCTION

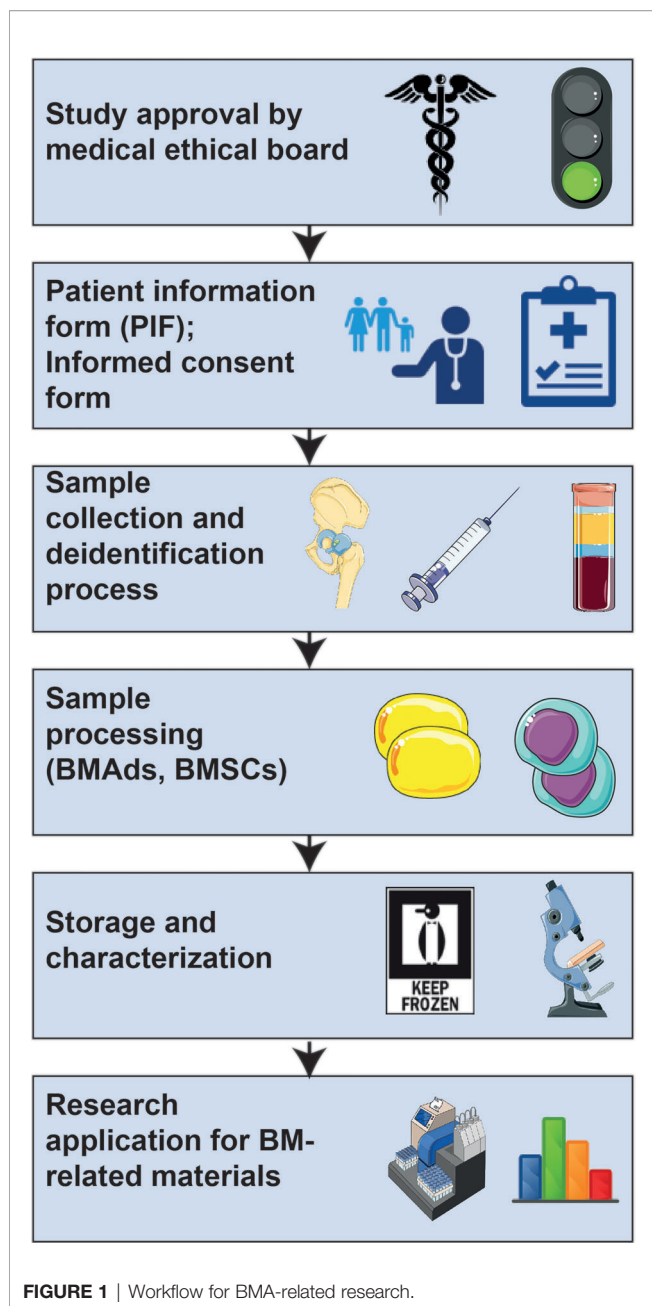
Over the last two decades there has been an increased interest by researchers to study bone marrow adipose tissue (BMAT) in relation to bone and adipose tissue physiology, which expanded the number of publications in the literature. Researchers have used different sources of BMAT to address the major questions in the bone marrow adiposity (BMA) field including: 1) What is the role of BMAT and how does its function change in different physiological and pathophysiological conditions compared to white or brown adipose tissues? and 2) How do we employ bone marrow adipocytes (BMAd) and bone marrow stromal cells (BMSCs) to enrich our knowledge about BMA? However, the methods used to isolate BMAT, BMAd and BMSCs, and the anatomical site(s) from which these are obtained, may influence their biological properties and the downstream analyses for which they can be used reliably. BMA is a young field that has recently received increasing attention among numerous scientific communities (1–5). The goal of this BMA biobanking position paper is to make protocols accessible for all interested researchers and to support researchers in designing their biobanks, sharing their samples and expertise to accelerate progress in BMA research. By facilitating the exchange of knowledge and biological samples, we aim to enhance BMA research worldwide. The BMA biobanking initiative was formed

based on discussions among scientists involved in the International Bone Marrow Adiposity Society (BMAS), who created a BMAS Working Group (WG) focused on a need to coordinate biobanking activities in the field; develop guidelines and steps to advance establishment of biobanks for BMA research; and to enhance transparency about differences in BMA-related protocols used among the growing BMA research community. Our Biobanking WG identified currently used collection procedures related to BMAT, BMAd and BMSCs isolated from bone marrow (BM) aspirates, BM plasma and bone tissues. Since samples might be shared among international collaborators, it is critical to consider aligning procedures as much as possible for all sites participating in BMA research, and where access to samples and data will be subject to the strictest scientific and ethical scrutiny. The WG realizes that this is currently impossible to achieve, but as first attempts towards harmonization for biobanks have been successfully employed to access cross-institutional data (6), we aim to report here on the uniformities and discrepancies between protocols and storage of materials related to BMA. Our effort is in line with the recently published BMAS guidelines on nomenclature, abbreviations and units (7), as well as data reporting guidelines and methodological standards (8), produced by the BMAS working groups on Nomenclature and Methodologies, respectively.

Ethical, legal and social issues are complex, affect many biobanking aspects, and have not been fully resolved by the scientific community. In this review, we will also address guidelines in regard to BMA-related biobanking issues, such as informed consent, and compare differences in biobanking procedures and institutional patient information forms (PIFs).

The main goal, therefore, of this paper is to describe the current uniformities and discrepancies for the collection, use, storage and monitoring of BMA-related samples. A stepwise approach going from medical ethical approval through collecting and storing samples to the characterization and analysis of BMA-related samples is depicted in **Figure 1**. Although we are still far from a global harmonization of protocols, achieving this

**Abbreviations:** ADIPOQ, Adiponectin; ADSC, Adipose tissue-Derived Stromal Cell; ALPL, Alkaline Phosphatase; BM, Bone Marrow; BMA, Bone Marrow Adiposity; BMAd, Bone Marrow Adipocyte; BMAS, Bone Marrow Adiposity Society; BMAT, Bone Marrow Adipose Tissue; BMI, Body Mass Index; BMSC, Bone Marrow Stromal Cell; BSA, Bovine Serum Albumin; CFU, Colony Forming Unit; DMEM, Dulbecco's Modified Eagle's Medium; FBS, Fetal Bovine Serum; IF, Immunofluorescence; ITGA5, Integrin alpha 5; KRH, Krebs Ringer HEPES; LEP, Leptin; LPL, Lipoprotein Lipase; MEM, Minimum Essential Medium; PBS, Phosphate Buffered Saline; PIF, Patient Information Form; PLIN1, Perilipin 1; PPARG, Peroxisome Proliferator Activated Receptor Gamma; RUNX2, Runt-related transcription factor 2; scRNA-Seq, Single Cell RNA Sequencing; WAT, White Adipose Tissue; WG, Working Group.



would greatly enhance the quality and interpretation of BMA-associated outcomes and increase the impact of BMA research. In fact, broad consent for future research may facilitate harmonization as well and, as it is ethically valid, this should be recommended for biobank research (9).

## 1.1 Introduction to Biobanking

Biological collections and collection-based science was first described by Carl von Linné in the 18<sup>th</sup> century when he proposed the first system of classification for all biological species on earth (10, 11). The term “biobank” was used for the

first time by Loft and Poulsen in 1996 when they suggested the use of human biological material to study a risk factor in cancer (12). Ever since, the field of biobanking has been expanding and it is now a fundamental and indispensable infrastructure for global health research (13–15). However, a BMA biobank has not yet been created. In general, a “biobank” includes large collections of biological samples such as DNA, cells, solid tissues or blood samples (16, 17), which are often stored for a long period of time and used only once a certain number of samples have been collected. They can also be processed, distributed, and used immediately. Samples are used by a variety of research projects and end-users, for example in population-based cohorts for diagnostic or interventional clinical trials, for medical needs/treatments, or for basic researchers validating their findings in human samples. Biobanks can be hospital-, government- or academic-based; networked or more isolated; and for profit or non-profit organizations (16–18). The population-based UK Biobank, between 2006 and 2010 collected biological samples from 500,000 volunteers without specific inclusion/exclusion criteria. Its aim was to investigate the influence of individual genetic susceptibility and exposure to external factors (19). In contrast, disease-oriented biobanks collect disease-specific specimens and non-diseased controls (20). Therefore, the definition of “biobank” varies greatly due to different types and components/purpose of biobanks, and because many biobanks evolved in a local and decentralized manner (13, 17, 21). Different national regulations established by local governance such as ethical guidelines or data protection provoke heterogeneity with regard to biobanking; however, for sharing biological samples with the scientific community, standard procedures for harmonization are required (21). Major advantages of the centralization of processing and standardization are the reduction of costs, increased throughput, and improved accuracy of sample handling and picking (22). The Organization for Economic Cooperation and Development (OECD) recommendations on Human Biobanks and Genetic Research Databases (HBGRD), published in 2009, provide guidelines for the establishment, management, governance, operation, access, use and discontinuation of human biobanks and genetic research databases (23). The structural key elements for sustainable international scientific infrastructure are named Biological Resource Centers (BRCs) as defined by the OECD (24). In addition, the International Organization for Standardization publishes standards for biobanks and bio-resources in ISO 20387 (ISO 20387:2018 “Biobanking – General requirements for biobanking”) to harmonize the biobank procedures. It also provides a professional environment for handling not only biological samples but also animal, plant and microorganism resources. Besides quality control of samples, ISO 20387: 2018 also includes validation of methods and competences of personnel (21, 25). In addition to the biobank infrastructure itself, the term “biobank” also covers bioethical and legal issues including ownership, informed consent and privacy – anonymization (17).



## 2 INFORMED CONSENT FORM FOR BMA-RELATED RESEARCH

### 2.1 Providing Information Before Donation

Informed consent is a first, critical step in any tissue donation. Informed consent is not merely a disclosure form confirmed by a signature, it must also promote participant's understanding of the research project and emphasize the voluntary nature of participation (26). The informed consent form consists of two parts: the informed consent certificate (containing approval of participant) and the Patient Information Form (PIF). Generally, the patient/donor is presented with the consent form after they have familiarized themselves with the PIF (see below). However, some institutions administer both consent form and the PIF simultaneously. The consent form should state that the patient had time and the opportunity to consider the information contained in the PIF, to ask questions, and obtain satisfactory answers to those questions. The consent form should explicitly state that the risks and benefits of the study have been clearly explained to the participant. The forms can be broad or specific to BMA research; the advantage of a broad consent form is that the collected samples can be used for a number of research projects that do not have to be specified at the time of consent. This breadth may be particularly useful for BMA research, which spans numerous other research fields. On the other hand, formulating the consent form specific for BMA research might make it easier for a donor to agree to participate, as they will know precisely what their samples will be used for. In fact, there is not yet a consensus on the policy regarding consent issues (27). The potential use of biobanked samples for translational work that may involve industrial collaborations and eventual commercial applications should also be discussed, as this may require explicit consent. For this reason, some countries have opted to include on their informed consent template a clause specifying that the patient waives future commercial rights.

Participants should realize that they are signing the consent to allow the storage and use of their specific biospecimens and any data resulting from the research using those specimens. Thus, it should be clear that only approved research studies can gain access to a donor's de-identified data and samples. Studies that utilize the specimens and/or data need to receive prior scientific and ethical approval by the relevant committees, such as the IRB (Institutional Review Board), and they need to fit within the general requirements of the biobank and align with the consent form.

### 2.2 Deidentification as Prerequisite Before Consenting

Deidentification of data is a critical component of any research study involving human subjects. The procedures that will be used to protect the privacy and confidentiality of the subject's data need to be clear to the potential donor prior to consenting. Unfortunately, biobank participants are not always made aware of the confidentiality risks associated with participation, which is a major ethical concern (28). Therefore, the donor needs to clearly understand how records will be secured, who will have

access to the identifiable data, and whether names or ID numbers will be used. The procedure for securing the file linking the codes to individual subjects needs to be explained and participants should be informed about these issues while discussing the informed consent (29). Not all institutions include a Data Privacy Statement as part of their consenting protocol, and it is critical that this procedure is standardized across all institutions participating in BMA biobanking.

### 2.3 Possibility of Withdrawal From a Clinical Study

The consent form should state that the donor can withdraw from the study at any point and the acceptable ways to withdraw (e.g., email, phone call, letter) should be indicated. It should be clearly explained that upon withdrawal, identifiable samples and the associated data will be destroyed, unless the data have already been used for research. This is in line with the guidelines of the International Bioethics Committee (UNESCO) stating that handling of data and biological samples should follow the wishes of the donor unless they are irretrievably unlinked, making it impossible to do so (30). Accordingly, the consent form should indicate that the code that enables re-linking the samples with personal information will be deleted and only the signed consent form and a copy of the withdrawal letter will be kept as a record. These steps will prevent information about the donor contributing to further research and analyses.

## 3 PATIENT INFORMATION FORM AS BASIS FOR BMA-RELATED BIOBANKING AND ETHICS DISCUSSION

Many research institutes have templates for patient information and informed consent forms, and The Research Ethics Review Committee of WHO provides general templates and recommendations that can be adapted to specific needs (31). Within a PIF, the participant taking part in the study should be accurately informed about the planned study, what material will be collected and how it will be stored and used for research purposes. Although not every detail of the study has to be provided, the donor should have a rough idea of what will be done with his/her material and know that the collected samples will be handled with the utmost care and adherence to the various regulations, including those according to the General Data Protection Regulation (GDPR). The consent process can be improved by using clear and simple language in the documents (26, 32). Discussions between investigator and patient are encouraged to improve participant comprehension and ensure consent to participate (32). Below is a list of items that the WG believes should be mentioned in the PIF and which will be elaborated upon briefly, point by point (**Table 1**).

### 3.1 Positive Disadvantages or Risks and Benefits of Donation

With every medical treatment or procedure there is some risk involved. Thus, the sample procurement procedure should be

**TABLE 1** | Issues to be considered in patient information and informed consent forms.

Item	Patient information form (PIF) (presented to the participant before donation)	Informed consent form (signed by the participant, after considering the information in PIF)
<b>a. Information about the planned study</b>	<ol style="list-style-type: none"> <li>1. <i>What is the purpose of the study?</i> <ul style="list-style-type: none"> <li>- Background information and simple description of the study (broad or specific to BMA research)</li> <li>- Clear description of goals and expected results will help to increase the participation rates</li> <li>- Study is approved by Research Ethics Committee/Institutional Review Board</li> </ul> </li> <li>2. <i>What sample material will be collected?</i> <ul style="list-style-type: none"> <li>- BM sample (tissues/cells)</li> <li>- Reference samples (eg. subcutaneous fat, blood)</li> </ul> </li> <li>3. <i>How it will be collected?</i> <ul style="list-style-type: none"> <li>- Sampling procedure (surgery/biopsy/aspirate)</li> <li>- Risks and disadvantages related to BM sampling</li> </ul> </li> <li>4. <i>What the sample will be used for?</i> <ul style="list-style-type: none"> <li>- Broad purpose (unspecified projects) or BMA-specific purpose</li> <li>- General risks related to the sample donation and storage (eg. storage of genetic information)</li> </ul> </li> </ol>	<p>Donor has had enough time to familiarize him/herself to the information provided in the PIF</p> <p>Donor has had a possibility to ask questions after considering the information in the PIF</p> <p>Donor understands the risks and benefits of participation</p> <p>Risks</p> <ul style="list-style-type: none"> <li>- General risks of sample donation</li> <li>- BMA-specific risks (e.g. risks related to the BM sampling procedure), blood sampling, or surgery.</li> </ul> <p>Benefits</p> <ul style="list-style-type: none"> <li>- No direct health benefits or financial benefits</li> <li>- Indirect benefits <i>via</i> promoting BMA-related research (and e.g. development of novel therapies in the future)</li> </ul> <p>Donor provides information about his/her clinical condition</p> <ul style="list-style-type: none"> <li>- Current diseases and treatments</li> <li>- Past diseases and treatments</li> <li>- Age, metabolic status and lifestyle habits (according to the study)</li> </ul>
<b>b. Sample and data storage</b>	<ol style="list-style-type: none"> <li>5. <i>Who can access the biological samples and the data obtained?</i> <ul style="list-style-type: none"> <li>- Only approved research studies (with ethical approval) may have access to the samples</li> <li>- Tissue/cells that is left over from this study will be stored for future research to learn more about BMA</li> </ul> </li> </ol>	<p>Donor allows the use of 1) biological samples and 2) the data resulting from the research using these samples.</p> <ul style="list-style-type: none"> <li>- The permission to store unused samples for possible future research should be separately requested.</li> </ul>
<b>c. Anonymization</b>	<ol style="list-style-type: none"> <li>6. <i>What procedures will be used to protect the privacy and confidentiality of the data?</i> <ul style="list-style-type: none"> <li>- Explain what personal data is collected and how the data is anonymized</li> <li>- Sample material (and the data resulting from these samples) cannot be traced back to any of the person-related data</li> </ul> </li> </ol>	<p>Donor understands 1) what data is collected and 2) how the data will be secured (Data Privacy Statement).</p> <p>Donor understands he/she will not have later access to his/her own data as all data is deidentified.</p>
<b>d. Withdrawal</b>	<ol style="list-style-type: none"> <li>7. <i>How to withdraw from the study?</i> <ul style="list-style-type: none"> <li>- Participation is always voluntary</li> <li>- Provide contact information for withdrawal from the study (email, phone number, website)</li> <li>- Explain how the samples and associated data will be destroyed after withdrawal: new data cannot be obtained and that existing data will be maintained in a non-identifiable form</li> </ul> </li> </ol>	<p>Sample is donated to biobank voluntarily.</p> <p>Donor can withdraw from the study later at any time and without any reason.</p> <ul style="list-style-type: none"> <li>- Explain how the withdrawal should be signaled to the researchers (eg. email, letter, phone call)</li> </ul>

sufficiently risk-assessed and communicated to the donor. Standard donation through tissue biopsies or blood drawing constitutes minimal risk, while BM biopsies or aspirations are more invasive and have an increased risk of various complications that need to be specified. Complications are rare, but as with any procedure involving a tissue biopsy, there is a small risk of bleeding and/or bruising from the sampling site. Moreover, there are descriptions of rare cases of deep tissue infections, severe internal bleeding or bone fracture associated to the BM biopsy/aspiration procedure. In the case of sampling as a byproduct during knee/hip surgery, there are no other risks beyond those usually associated with surgery. In all cases, there should be a lead doctor or research nurse involved to answer questions surrounding the tissue/cell collection. Moreover, donors should be informed about the potential risk of not being able to use the material, for example by unanticipated loss or low quality of the material obtained.

Benefits also have to be addressed towards the donor, with the general message that no direct benefits (e.g. financial or material) can be obtained from participating in a study. Having said that, being a donor contributes to the general understanding of diseases or tissues, such as BMAT, which may lead to future development of new, effective treatments, and thereby may benefit patients. In addition, healthy control donors are often compensated for their involvement in a research study in the form of a small fee for the incremental inconvenience, burden or risk associated to dedicated tissue collection, as opposed to the often-uncompensated donation of residual tissue obtained upon routine medical procedures (33–35). Providing relevant background information about the goals of the study and the expected results is key and will increase participation rates. This will lead to more impactful studies with more reliable conclusions on BMA-related outcomes.

### 3.2 Constraints and Safeguards of Biobanking

For any clinical study to start, two critical steps are required. Firstly, approval of a medical ethical board is required within the institute where the study is conducted. When a study is multi-centered, there should be an additional approval from the cooperating institutes, but this could be partial or less stringent as long as the coordinating center has a full approval.

Secondly, a valid, written consent is needed before the acquisition or use of the intended BMA-related sample or associated clinical data. By definition, the donor's participation is always voluntary and he/she can always withdraw from the study. The participant will never have access to his/her own data as all data are anonymized. In fact, as soon as a sample is obtained, it should be fully deidentified through encoding in any biobank. None of the users employing the samples or analyzing data belonging to the study can trace back any of the material to any of the person-related data belonging to the donor. This is one of the primary requirements for any medical study involving patient or participant biomaterial and all effort should be taken to prevent any breach of confidentiality.

### 3.3 Differences Between Institutional PIFs and Biobanking Procedures

In preparation of this position paper, the BMAS Biobanking WG has scrutinized and compared PIFs derived from seven different institutes across Europe and the US. It became evident that there are differences regarding the various aspects described above, especially in the context of the actual content and the level of detail of the proposed research, but also with respect to which measures have to be taken to safeguard the anonymity of the participant in the study and the protection of the acquired data. We thus realized that there are many hurdles to overcome in an attempt to harmonize protocols and procedures across the globe.

## 4 BIOLOGICAL MATERIALS RELEVANT FOR BMA-RELATED RESEARCH

The types of tissue/cell that will be collected for BMA-related studies are primarily driven by the sample accessibility. Bone and BM samples can often be obtained during invasive procedures, such as surgeries (joint replacement, amputations, open-heart or spinal surgery), autopsies, BM biopsies and BM aspirates (8). The nature of the research depends on the surgery and biopsy type, which determines the anatomical site, patient characteristics (underlying pathology, age, sex, etc., as reviewed below), quantity and quality of sample, and transportation/storage capabilities. Other tissues, such as subcutaneous white adipose tissue (WAT) and venous blood, can also be collected in parallel, but only waste/discarded material, or small samples that cause minimal risk, should be used. Subcutaneous WAT is relatively easily obtained at the site of surgery and can be used as a reference for BMAT analyses, and serum/plasma can be assessed for relevant biomarkers, for example for metabolic function and bone remodeling (biochemical analyses).

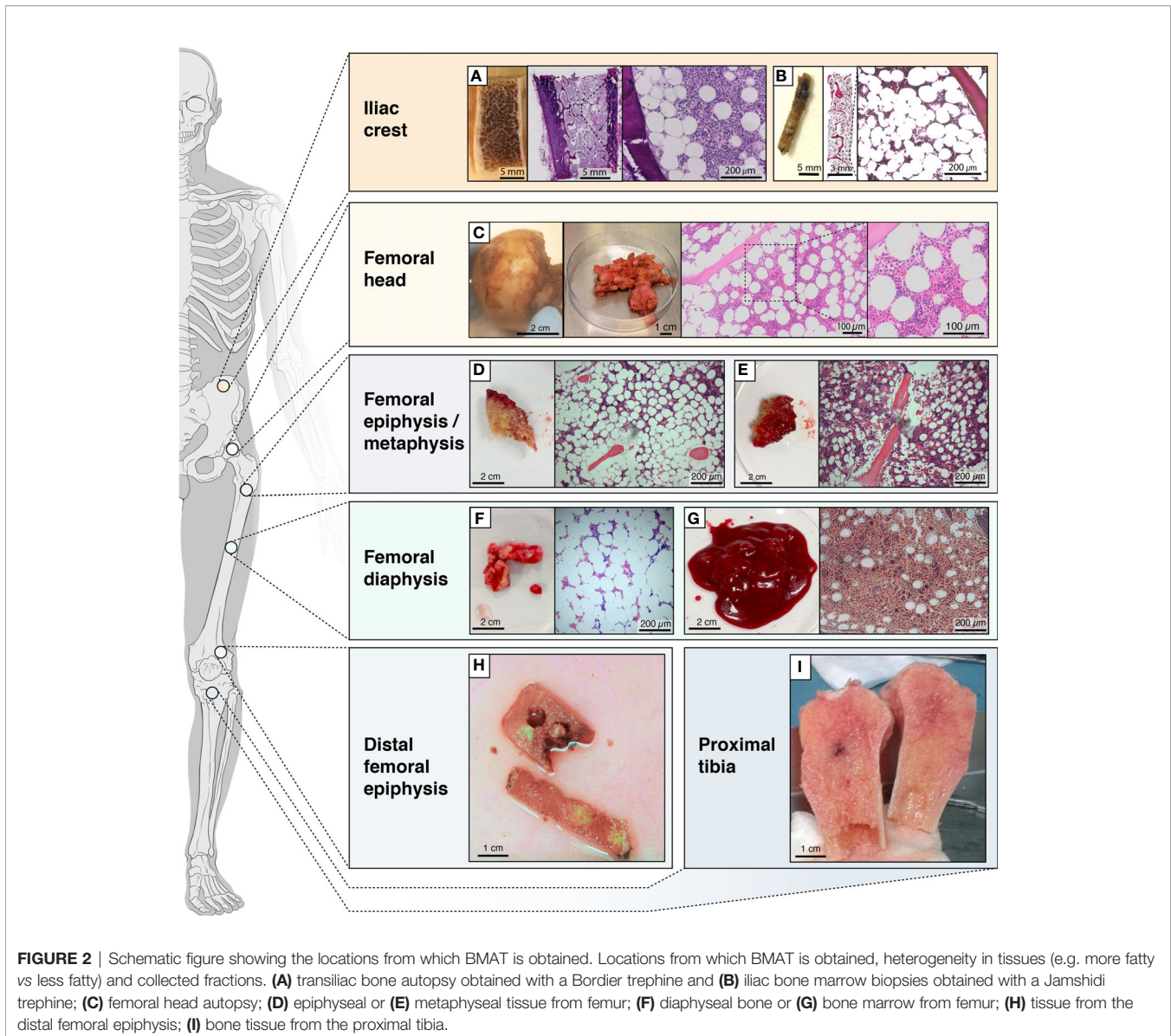
The presence of BMAds is variable depending on the surgery site but could be also due to patient heterogeneity (Figures 2A–I). For example, as demonstrated from Magnetic Resonance Imaging analyses, the femoral head is expected to be more enriched for BMAds compared to the ilium, while the femoral or tibial diaphysis are expected to have even greater BMA than the femoral head (36). The pathophysiological context can also be a source of heterogeneity in BMA development and phenotype, and can consequently influence the BMA isolation, analysis, and study outcomes. Indeed, age, sex, lifestyle habits, metabolic status (e.g. obesity, diabetes, anorexia), medications (e.g. thiazolidinediones, glucocorticoid analogs, hormonal substitutive therapy, radio- or chemotherapy) and the pathology underlying the orthopedic surgery (osteoporotic fractures, osteoarthritis, osteonecrosis, etc.) are conditions known to modify the BMA component [as reviewed in (37–41)]. Therefore, it is important to collect donor clinical characteristics, including age, sex, body mass index (BMI), medication history, and incidence of fractures in order to better define the heterogeneity of clinical material (Table 1).

In this context, it is very challenging to establish a harmonized “healthy” control set for biobanking as the definition of “healthy control” varies among different studies, depending on the clinical sampling, the aim and biological questions. The “healthy control” samples are ideally obtained by BM biopsies and aspirates from healthy volunteer donors. Yet, as emphasized above, ilium may not represent the most reliable bone site to study BMAds. Orthopedic surgery of healthy patients (not diagnosed with BM diseases or necrosis) following trauma or amputation are an exception, while it is sometimes possible to get “healthy” samples considered as debris during surgery. In fact, this type of surgery currently delivers most of the “healthy” samples. Post-mortem sampling from organ donors can also be considered if the subsequent analyses (such as adipocyte histomorphometry) are compatible with a delayed processing; however, BMA molecular characteristics are likely to be compromised in such post-mortem samples. It is the responsibility of the research team to clearly establish and describe the inclusion and exclusion criteria, which subsequently allows for categorization of “healthy” or “control” *versus* “study” group(s). Alternatively, a referent cell type (e.g. subcutaneous adipocytes, BMSCs from another bone site) isolated from the same patient can be used for comparisons.

### 4.1 Choice of BMA Relevant Biological Materials and Their Use

Due to the various types of tissue and cell types relevant to BMA, the unclear definitions of cell populations and the relatively recent emergence of the field, the methodology behind collecting BMAT, BMAds and BMSCs is heterogeneous as recently reviewed (8). It is important, for all samples that have been collected, to specify if screenings have been performed for viral diseases (typically HIV, HBV and HCV), as in some countries a negative test is a prerequisite to allow usage of the samples in research facilities. So, for the future of biobanking it is important to keep track of these variables.





#### 4.1.1 Operation Specimens and Autopsies

A reliable method to obtain fresh BMA-relevant biological material is during orthopedic surgeries, such as knee and hip replacements, reconstructions, corrections and amputations. During these operations, a key part of the surgical procedure is removal of bone and BM that is often discarded after the surgery. It is possible to recover this biological material for BMA-related research and biobanking. A good example is hip replacement surgery, where the femoral head and part of the trabecular bone cavity are removed and simply discarded, if not transferred to a bone bank as allograft material. With these surgical specimens, it is possible to process samples for downstream detailed histology (see BM biopsies) (**Figures 2A–I**) or to isolate almost all desired adipocytic, stromal and hematopoietic BM cell types; see also section 4.2.

Post-mortem autopsies offer a unique opportunity to obtain BMA-relevant biological materials from several skeletal sites, and

not only the classical sites undergoing orthopedic surgery or BM biopsies. As mentioned earlier, these autopsies are useful only for simple adipocyte histology and histomorphometry, and ex vivo imaging by micro-computed tomography ( $\mu$ CT); they are not suitable for molecular analysis and cell isolation (unlike for fresh operation specimens and BM biopsies). Nevertheless, histomorphometry and imaging of autopsy samples are still useful as they allow for analysis of the BM compartment to analyze the BMA content, morphology and size (**Figure 2A**). High quality tissue may however be banked in the exceptional context of systematic bone tissue collection from post-mortem organ donors.

#### 4.1.2 Bone Marrow Biopsies

Transiliac bone biopsies obtained with a Meunier/Bordier trephine (inner diameter 5–8 mm) have for decades been the



gold standard within bone research and diagnostics. These biopsies are obtained under a quite invasive procedure, usually performed under general anesthesia. For BMA-related research, it is sufficient to obtain iliac BM biopsies with a Jamshidi trephine [inner diameter 3 mm, recommended length 2 cm (42)]; this is a much-less-invasive procedure usually performed under local anesthesia, which also allows for collection of a BM aspirate (**Figure 2B**). These 3-mm bone marrow biopsies are the gold standard in hematology research and diagnostics, and due to their less-invasive nature they are more justifiable from an ethical perspective. The usability of these biopsies is versatile for BMA-related research, as it is for surgery specimens. For BMA-related research by histology there is no need to embed the undecalcified specimens/biopsies in plastic, as done for classical bone histomorphometry. Instead, the specimens/biopsies can be fixed, decalcified and paraffin- or frozen-embedded. *Ex vivo* imaging by  $\mu$ CT or similar method can be performed before the specimens/biopsies are decalcified. The embedded specimens/biopsies are then usable not only for adipose histomorphometry (see autopsies), but also for more advanced molecular histology, like multiplex immunostaining, *in situ* hybridization, laser microdissection and spatial transcriptomics (8). This facilitates detailed analysis of BMAd spatial distribution, gene expression profile, and interaction with other cell types in the BM.

#### 4.1.3 Bone Marrow Aspirates

BM aspirates are primarily taken from the iliac crest or femoral BM biopsy (occasionally from femoral epiphyses) site, usually following the biopsy under local anesthesia. This is a less-invasive procedure and allows for relatively easy collection of BM fluid containing various cell types, including adipocytes (43–45). The BM aspiration procedure is not necessarily familiar to the participant and the PIF should describe what happens during sampling on a step-by-step basis, including injection of the local anaesthetic into the location where the sample is to be taken from. BM aspirates are especially useful for the collection of various cell types, including a BMAd-enriched fraction (see *Section 5*) and BMSCs (8). The cells can be directly cultured following collection, or they can be prepared for storage to be analyzed later. Typically, the different BMSC-related cultures are employed to study cell behavior, differentiation, marker expression and/or their interaction with other cell types (mimicking the situation in BM). BMAd-enriched fractions can be extemporaneously used or stored for further molecular and biochemical analyses. Although no cell type or tissue collection is involved, *in vivo* analyses of BM are increasingly available and provide a good source of information on BMA content, composition, spatial and temporal distribution (etc.), and it would be very helpful to compare these *in vivo* analyses to biobank data (8).

#### 4.1.4 Subcutaneous Fat

Subcutaneous WAT can be collected at the surgery site and provides a rich source of adipocytes and Adipose tissue-Derived Stromal Cells [ADSCs, nomenclature according to (7)], that can be used for reference, for example for comparison with BMAds and BMSCs.

#### 4.1.5 Blood Samples

Venous blood can be collected in different ways depending on the research question but most often is stored in the form of serum (for measurement of biochemical parameters e.g. lipids, growth factors, hormones or plasma collected in the presence of anti-clotting agents (e.g. EDTA or Heparin) (for molecular analyses, chemistry, or cell culture). Quantification of metabolites in blood samples requires standardization of pre-analytical processing and rapid cooling down, as reviewed here (46–48). If blood samples are obtained in the fasted state, it is also possible to investigate the level of bone resorption and formation using markers like PINP, CTX, NTX and TRAcP, and link this to the bone metabolic state (49).

### 4.2 Isolated Human Primary BMAds and BMSCs

BMAds are present scattered or more packed within the BM of different bones in humans (**Figures 2A–I**). Accessibility of the BM cavity is obviously required to isolate BMAds, which restricts the bone sites available to obtain samples [i.e., BM biopsy sites, resected bone pieces and BM aspirates of long bones obtained during orthopedic surgery (**Figures 2A–C, 2E and 2G**)]. So far, BMAds and BMSCs have been obtained from different locations including the femoral head (50, 51), the diaphyseal end of the femur or tibia (52), BM aspirates from the femur (53) and the iliac crest (54, 55) (**Figures 2A–C, F–G, I and 4**).

Specific procedures for the collection of BMAds are relatively novel (*see below*), and in some cases freshly isolated BMAds may be needed for immediate analysis. However, BM fragments and BMSCs have been successfully collected and biobanked, followed by optimized characterization of the cryopreserved material (56, 57).

The process of sampling is also variable and influences the quality of BMAd isolation. For example, for hip arthroplasty the femoral head is removed using a surgical saw and, prior to insertion of the artificial hip, the medullary canal is cleared using a reaming tool before aspiration of the BM. These steps are often done using electric saws and reamers, but non-electric tools can also be used. Similarly, some electric reamers simultaneously aspirate the BM cavity, but aspiration can also be done manually, post-reaming, using a syringe and soft cannula. These different methods (i.e. electric *vs* non-electric) can affect the quality of BMAds as a result of differences in heat production and/or mechanical stress (51, 53, 58).

Thorough discussions with the surgeons are thus instrumental to determine the optimal processes and to adapt surgical techniques, when possible, for BMAT sampling.

As previously encouraged (8), a detailed description of the source of BMAds is consequently required for biobanking purposes and study comparisons. Firstly, minimal information should state the original skeletal location, i.e. distal/proximal bone site, trabecular bone or BM (**Table 2**). Secondly, patient characteristics should be reported including the distribution by age, sex and BMI as well as the pathophysiological context, i.e. the presence of bone disease, osteo-articular disease, hematological disease, malignancies, and their related treatment.

**TABLE 2** | Summary of critical steps for BMA<sub>d</sub> and BMSC isolation to highlight differences between protocols.

Main steps	EDIN	TOUL	LILL	LAUS	PRAG
<b>Material</b>					
<b>Bone site of sampling</b>	Femoral proximal metaphysis and diaphysis Femoral head	Femoral proximal metaphysis and diaphysis	Trabecular bone from distal femoral epiphysis	Femoral head (epiphysis + variable quantity of metaphysis) Iliac crest	Iliac crest
<b>Sample type</b>	BM aspirates	BM aspirates	Cancellous bone	BM aspirates	BM aspirates
<b>Final material obtained</b>	BMA <sub>d</sub> s	BMA <sub>d</sub> s	BMA <sub>d</sub> s	BMSCs and BMA <sub>d</sub> -enriched fraction	BMSCs and BMA <sub>d</sub> -enriched fraction
<b>Digestion</b>					
<b>Buffer</b>	KRH, 5.5 mM glucose 3% BSA	PBS 2% BSA	DMEM, 5.5 mM glucose 3% BSA	DMEM, 10% FBS	-
<b>Collagenase type, manufacturer (reference number)</b>	Type 1, Worthington Biochemicals (LS004196)	from <i>C. histolyticum</i> , Sigma Aldrich (C6885)	NB 4 standard grade, SERVA Electrophoresis (17454)	Type I, Gibco (#17100-017)	-
<b>Collagenase concentration</b>		250 U/ml	0.2 to 0.3 U/ml	1 U/ml	-
<b>Digestion time</b>	45min	Max. 20 min	15-30 min	45 min -1h	-
<b>Washing</b>					
<b>Buffer</b>	KRBH 5.5 mM glucose	KRBH 0.5% BSA	DMEM, 5.5 mM glucose/ 3% BSA	PBS/1% BSA	PBS/1% BSA

Different protocols have been set up to isolate BMA<sub>d</sub>s (from 3 institutes: EDIN, TOUL, LILL) or BMSCs (from 2 institutes: LAUS, PRAG). Differences related to biological material, digestion and washing parameters are highlighted.

Abbreviations referring to institute cities of members within BMAS Biobanking WG. EDIN: Edinburgh (WC); TOUL: Toulouse (CA); LILL: Lille (SL); LAUS: Lausanne (ON); PRAG: Prague (MT).

According to the studied questions, other specific parameters (such as BMI, metabolic status when relating to energetic metabolism perturbations for example) are also expected. Thirdly, how the original clinical sample is obtained (i.e., use of electric or non-electric surgical tools, use of digestion or other sample processing and any other relevant details) should also be described.

## 5 METHODOLOGY OF BMA-RELATED CELL ISOLATION AND ANALYSIS

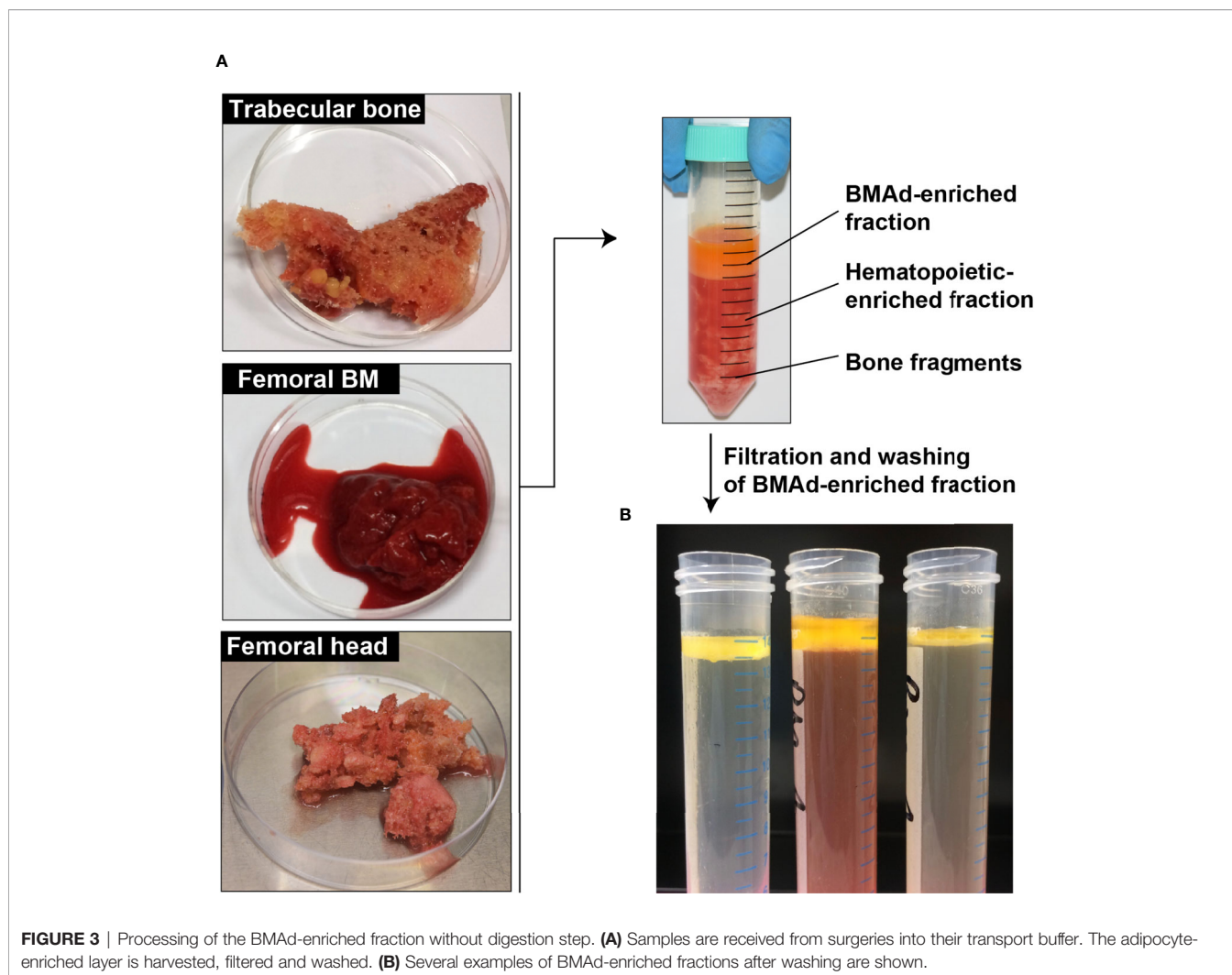
Various protocols for human BMSC isolation (55–57, 59–61) and, to a lesser extent, for BMA<sub>d</sub> isolation (50–54, 62–64) have been published. Isolated BMSCs are classically used *in vitro* to analyze their differentiation capacity into different lineages, to study BM cell interactions, to characterize progenitor markers, to analyze BMSC senescence and to compare their molecular and cellular characteristics to different sources of stem cells, including peripheral ADMSCs. Thus far, applications for isolated BMA<sub>d</sub>s are devoted to characterizing their specific phenotype by comparison with extramedullary adipocytes, such as subcutaneous WAT adipocytes, using RNA analyses, proteomics or lipidomics. The downstream analyses, as well as the research context encompassing the biological questions, the clinical sampling and the type of comparative/referent samples, have to be taken into consideration for the choice of the isolation method.

In this review we provide dedicated protocols for isolation of BMA<sub>d</sub>s and/or BMSCs. As discussed within each section, the absence of other contaminant cells, the cell integrity and the cell yield determine the success of the method. Considering the great heterogeneity in patients and samplings, it is advised to file a small piece of the initial tissue for histological analysis (**Figure 2**).

Besides, BMSCs can be obtained, though in small amount, during the BMA<sub>d</sub> isolation procedure. In addition, a floating lipid-loaded cell layer is often observed following the processing of BM aspirates or trabecular bone samples before any collagenase digestion (**Figure 3A**). This cell fraction most likely results from the surgical procedure that allows the release of BMA<sub>d</sub>s that are loosely attached and contains both BMA<sub>d</sub>s and contaminant cells from the hematopoietic and the stromal compartment. We suggest referring to this as a BMA<sub>d</sub>-enriched fraction (i.e. fraction that is obtained from BM but without collagenase digestion, as illustrated in **Figure 3B**), which could be used for lipid analysis. Yet, this BMA<sub>d</sub>-enriched fraction should be used only after digestion and washing steps if pure BMA<sub>d</sub>s have to be analyzed. This floating lipid-loaded cell layer is not to be confounded with the free lipid layer that results from spontaneous cell lysis upon excessive mechanical processing, excessive ambient temperature or handling time (**Figure 4**).

### 5.1 Isolation of BMA<sub>d</sub>s

Various laboratories have already started working on BMA<sub>d</sub>s isolated from BM aspirates, from femoral diaphysis (51–53, 64), from trabecular bone of the proximal femoral metaphysis/epiphysis (51), the femoral head (50, 62, 65), femoral BM fluid (62), the proximal tibia (52) or the iliac crest (54) (**Figures 2A–I**). Within our working group, three protocols were set up and validated to isolate and purify BMA<sub>d</sub>s, and accordingly, the critical steps to obtain pure primary BMA<sub>d</sub>s for different analyses are depicted here. These main steps are based on protocols commonly used for the isolation of adipocytes from peripheral WAT, which have been adapted from the initial work of Rodbell (66). Tissue digestion is commonly performed using collagenase to release BMA<sub>d</sub>s from the extracellular matrix,



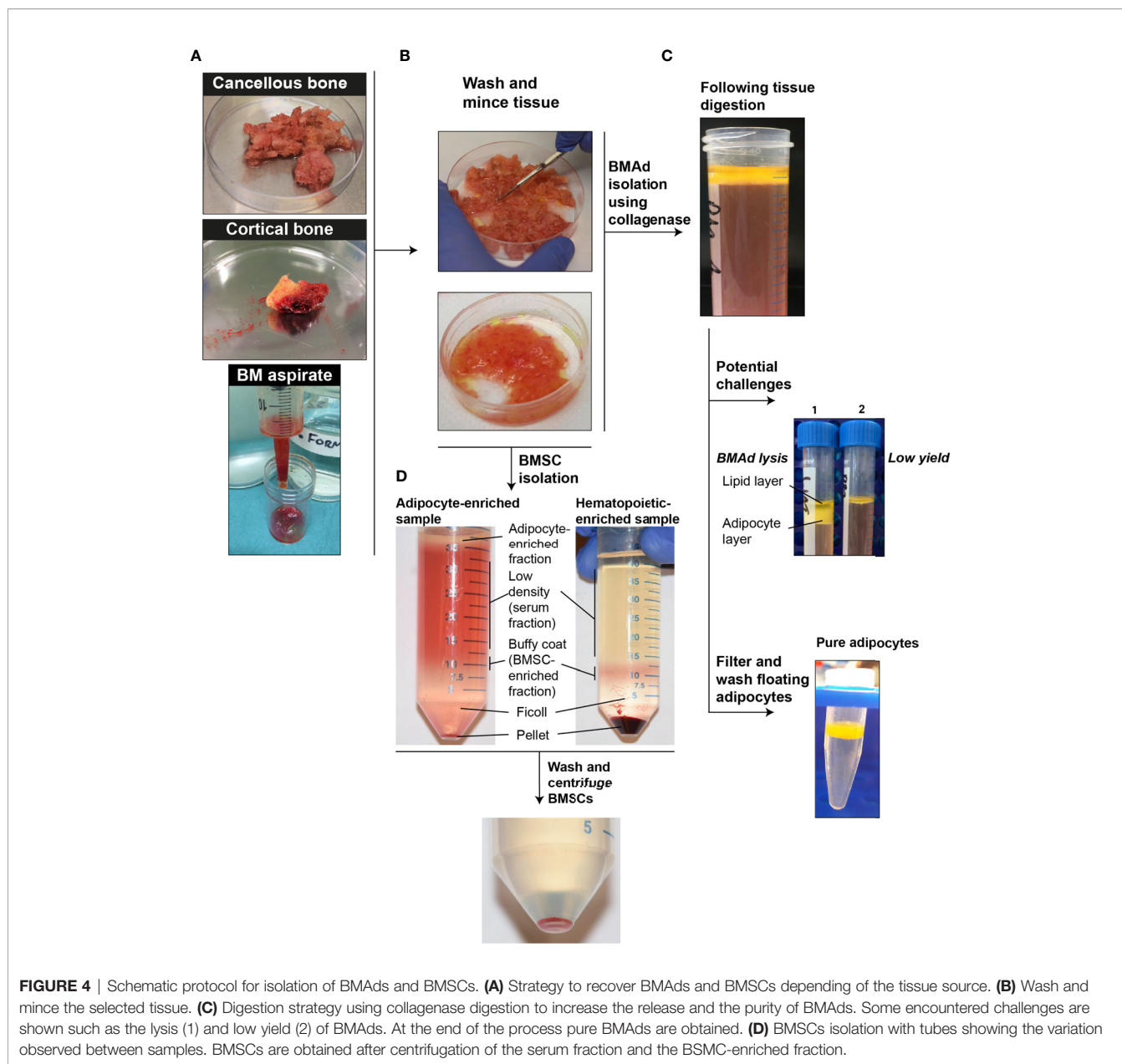
which is mainly composed of collagen fibers (67). Indeed, if the study relies on a comparison between isolated BMAds and WAT adipocytes, a similar method based on collagenase digestion should be performed. However, this enzyme-based isolation is not required if the study focuses on characterizing only BMSCs. Within the following sections we describe how the clinical sample is obtained and provide a general protocol to process these samples with joined notes to discuss key aspects. The main differences between our three protocols relate to reagents, as highlighted in **Tables 2, 3**. It is important to emphasize that each protocol has been tested and established separately. As combining reagents between the protocols has not been validated, it is recommended to strictly use the advised reagents for the selected protocol.

### 5.1.1 Isolation and Transport of Samples

As mentioned above, BMAds are isolated from femoral head, BM aspirates of femoral proximal metaphysis/diaphysis or trabecular bone from distal femoral epiphysis (**Figure 4**).

The femoral head is removed with an electric bone saw and stored in buffer or processed immediately in the surgical theater and the bone fragments obtained by mechanical processing stored in transport buffer. To obtain BMAds from the femoral head (51, 65), the trabecular core is first exposed by bisecting the femoral head longitudinally using an electric bone saw. A sterile spoon spatula is then used to cut and scoop out  $\sim 1 \text{ cm}^3$  portions of the trabecular bone from within the femoral head. The medullary cavity of the proximal femoral metaphysis and diaphysis is then cleared of trabecular bone by using a manual reaming tool, with a bone mallet used to drive the reamer into the medullary canal. To obtain BMAds from it, portions of trabecular bone are then removed from the reaming tool, washed and stored in buffer (51) (**Figures 4A, B**).

To obtain BMAds from the proximal diaphysis, BM from this region is aspirated using a soft cannula attached to a manually operated syringe. The aspirate is then transferred to a sterile petri dish or specimen tube prior to washing and storing in buffer (51, 53, 64) (**Figures 4A, B**).



To obtain trabecular bone from distal femoral epiphysis, 1 cm<sup>3</sup> of cancellous bone square is taken in the center of the femoral epiphysis using adapted cold chisels after the first distal femoral cut during knee prosthetic surgery (**Figures 2D–H**).

As soon as the sample is harvested, it must be placed in transportation buffer (**Table 3**) and transferred to the laboratory in the quickest possible manner<sup>1,2,3</sup>.

#### Notes:

1- Different buffers are used in our laboratories and the composition of these buffers is detailed in **Table 3**. All these media should be at pH 7.4 (buffered with HEPES and/or bicarbonate) and contain inorganic salts and glucose as nutrients are needed to maintain tissue integrity.

2- It is recommended to transport the sample at room temperature (~20°C) and to minimize strong temperature changes. Yet, for some applications such as molecular analysis (RNA expression, protein or lipid content characterization), keeping samples at 4°C (on ice) can be advised as reported in (51). For biobanking purposes, the effect of transport/storage conditions on cell properties and on any post-isolation changes still remains to be tested. At the moment, we recommend documenting the transport/storage conditions for every sample.

3- Ideally the transportation should be achieved within 30-60 minutes since the reduction of oxygenation and nutrient deprivation at the center of the sample may compromise tissue integrity, as already reported for other adipose tissues (53, 64).



**TABLE 3** | Composition of buffers used for sample transportation.

Buffer name	EDIN KRH	TOUL KRBH	LILL DMEM	LAUS PBS 1X + EDTA 1 mM	PRAG MEM
MgCl <sub>2</sub> ; 6H <sub>2</sub> O	N/A	0,5	N/A	N/A	N/A
MgSO <sub>4</sub>	0,6	N/A	0,8	N/A	0,8
KCl	2	4,6	5,4	2,7	5,3
NaCl	120	120	110	137	117,24
Na <sub>2</sub> HPO <sub>4</sub> (anhydrous)	N/A	0,7	N/A	10	N/A
NaH <sub>2</sub> PO <sub>4</sub> (anhydrous)	N/A	1,5	1	N/A	1
KH <sub>2</sub> PO <sub>4</sub>	1	N/A	N/A	1,8	N/A
CaCl <sub>2</sub> ; 2H <sub>2</sub> O	1	N/A	1,8	N/A	1,8
D-Glucose	5,5	10	5,5	N/A	5,5
NaHCO <sub>3</sub>	N/A	150	44	N/A	26,2
HEPES	81,6	10	N/A	N/A	N/A
Bovine Serum Albumin (BSA)	1%	0,5%	N/A	0	N/A

Five different buffers have been used for sample transportation: Krebs Ringer Bicarbonate HEPES buffer (KRBH), Krebs Ringer HEPES (KRH) and Dulbecco's Modified Eagle's Medium (DMEM, Dutscher, L0064). The concentrations of the different components are indicated in mM, except for BSA.

Abbreviations referring to institute cities of members within BMAS Biobanking WG. EDIN, Edinburgh (WC); TOUL, Toulouse (CA); LILL, Lille (SL); LAUS, Lausanne (ON); PRAG, Prague (MT).

### 5.1.2 General Protocol for BMAd Isolation

#### Reagents and Equipment:

- digestion buffer with collagenase (composition in **Table 2**), pre-warmed at 37°C
- washing buffer (composition in **Table 2**), pre-warmed at 37°C
- shaking water bath at 37°C
- Polypropylene tubes<sup>4</sup>
- cell strainer (100 µm) or a Nylon mesh (porosity between 150 to 300 µm)
- classical instruments and lab pipets/tips

#### Notes:

4- To limit the lysis of BMAds we recommend working only with plastic, because glass tubes cause lysis of adipocytes.

#### General Protocol (Figures 4B, C)<sup>5</sup>:

Rinse the tissue several times in the transport buffer (**Table 2**) to remove tissue debris and clotted pieces.

Mince the tissue in small pieces to facilitate digestion<sup>6</sup> and add tissue pieces in the digestion buffer<sup>7,8</sup> containing collagenase<sup>9</sup>.

Digest the tissue at 37°C in a water bath under gentle shaking (from 120 to 200 rpm) with a careful and continuous monitoring of the incubation time<sup>10</sup>.

At the end of digestion<sup>11</sup>, filter the cell suspension, either on a cell strainer or a Nylon mesh over a tube. The strainer or mesh should have a pore size of at least 100 µm, given the large size of adipocytes.

Add washing buffer to dilute the collagenase and to rapidly stop the collagenase action.

Allow the adipocytes to then float in the filtered suspension either storing upright the tubes or centrifuging (5min, 300 g).

Aspirate the infranatant and the cell pellet<sup>12</sup>.

Wash 3 times the floating adipocytes by adding washing buffer and centrifuging for 5 min at 300 g to pellet contaminant cells<sup>13,14,15</sup>.

Collect the BMAds in this floating layer using a micropipette<sup>16</sup> or by removing the remaining washing buffer as much as possible following a short centrifugation step to pack the floating cells<sup>17</sup>.

#### Notes:

5- The isolation protocol is performed at room temperature with the exception of the digestion step. Please be aware that in poorly temperature-controlled environments (for example in the summer months), BMAd viability may be considerably compromised.

6- Unless the tissue is already partly dislocated, such as for the BM aspirates, the other tissue types (e.g. cancellous bones) are then minced in small pieces to facilitate digestion. Cancellous bone from the femoral epiphysis or metaphysis is for example transferred in a small flat plastic dish and kept immersed in digestion buffer to be cut using a scalpel or scissors to get pieces of ~5mm<sup>3</sup>. During cutting, the bone can be held in place using cutting clamp or forceps, as needed.

7- The digestion is favored by an appropriate balance between the volume of digestion buffer and the amount of tissue fragments. We recommend the use of two buffer volumes for each sample volume or, if preferred, 2 mL buffer per gram of tissue.

8- Digestion buffer can vary from PBS, Dulbecco's Modified Eagle's Medium (DMEM) to Krebs Ringer HEPES (KRH), highlighting the importance of a basic ionic strength (**Table 2**). The presence of glucose may not be necessary during a short digestion duration but can be advised to minimize changes following transportation or when metabolic features of BMAds are studied. Importantly, the presence of fatty-acid-free Bovine Serum Albumin (BSA) at classical concentrations of 2 to 3% (w/v) is instrumental: BSA binds the released fatty acids and prevents their detergent action on cell membrane (68).

9- Different collagenases can be used with yet a careful choice (**Table 2**). Indeed, collagenase preparations differ between manufacturers and from batch to batch. Thus, our labs first

check the efficiency of the collagenase batch they use and determine the collagenase amount and the digestion duration to obtain a BMAd suspension. BMAds are more fragile and loosely associated compared to adipocytes from WAT. Thus, digestion time for BM tissue can be reduced; however, it remains unclear how differences in digestion duration affect the final properties of the BMAds and WAT adipocytes.

- 10- An optimal shaking should provide the appropriate diffusion of the collagenase with the whole tissue fragments while mixing the fatty acids with BSA, and yet should also avoid BMAd lysis. This shaking can modulate the digestion duration and can also be adapted according to the samples. As a general rule, shaking force should be highest at the beginning and reduced with time. Incubation time can vary between 15 and 45 minutes.
- 11- Digestion occurs when increased turbidity appears. The medium becomes more and more opaque because of BMAds which, once released, float at the surface (especially evident once the tube is no longer being shaken). This step should be continuously monitored and stopped when cell release from bone pieces seems reduced. Besides, the digestion must be stopped when large amounts of lipids are released (i.e., oil appearance in the suspension meaning that adipocytes burst).
- 12- The cell pellet contains BMSCs, which can be harvested at this step. After removing the adipocytes, the remaining buffer with collagenase is aspirated. In a sterile hood, pellet is resuspended in red blood cell lysis buffer according to the manufacturer's instructions: add 1ml of buffer, vigorously pipette to mix, let sit for 1 min, add 15 ml of KRH buffer (without BSA), pipette to mix. Then, split cell resuspension into two 14 mL falcon tubes and centrifuge at 300 g for 10 minutes prior to remove the supernatant. Then the pellet is resuspended in appropriate culture medium as described in the BMSC section (5.2.3).
- 13- Even after cell dissociation with collagenase and separation of adipocytes by flotation, some contaminant cells can remain attached to adipocytes. Thus, to purify adipocytes, it is important to wash and centrifuge the adipocyte suspension to pellet contaminant cells.
- 14- BMAds are fragile and can burst during the washing steps so we recommend doing this step as quickly and gently as possible.
- 15- For Western blots or proteomic analyses, BSA must be removed to allow a correct protein quantification of the samples. To do so, it is important to wash twice with PBS.
- 16- If using a pipette, it is recommended to cut the tip using a scalpel to increase the bore size of the pipette tip; this prevents shear stress and lysis of the BMAds.
- 17- If BMAds are to be used only for downstream molecular analysis, it can be advised to store the tube on ice to facilitate formation of the floating adipocyte layer, to use ice-cold washing buffer to minimize any further molecular changes and to centrifuge at 4 °C. In that case, the use of glass pipettes to homogenize in the RNA extracting reagent is beneficial because this promotes BMAd lysis and prevents adherence of the cells to the pipette, thereby increasing yields.

### 5.1.3 Freezing and Storage of BMAd Samples

The isolated BMAds can then be frozen according to the future analyses<sup>18</sup> as indicated in the overview in **Table 4**. Special attention should be paid to the cell volume to adapt the volume of RNA extraction reagent (about 1:6 or 1:10 v/v) and to remove lipids. As for adipocytes from WAT, excessive lipid can prevent efficient RNA isolation. Thus, following initial cell lysis, it is helpful to allow the homogenate to settle on ice, resulting in a formation of a floating lipid layer. This lipid layer can then be removed and discarded, to be replaced by a similar volume of RNA extraction reagent.

For untargeted lipidomics, BMAds can be frozen in methanol to allow a better stability of lipids. For targeted lipidomics, the extraction buffer is different depending on lipid classes. Thus, we recommend freezing samples directly in the appropriate extraction buffer. In other cases, BMAds can be frozen without extraction buffer but under nitrogen gas to prevent the oxidation of lipids.

#### Notes:

- 18- We recommend freezing a known volume of adipocytes in liquid nitrogen and keeping samples at -80°C until use. When subsequent analyses are already planned, samples can be stored in specific media for better stability.

### 5.1.4 Approaches to Check Purity and Viability

One issue with BMAd isolation is that non-BMAd populations may contaminate the layer of floating cells. As an example, human BMAds can have direct interactions with osteoclast precursors (62). Considering that macrophages are contaminants of isolated WAT adipocytes, other surrounding cells (e.g. BMSCs, endothelial cells, hematopoietic or immune

**TABLE 4** | Recommended storage of isolated BMSC and BMAd samples.

Storage of the samples	BMSCs	BMAds
<b>Cell cryopreservation</b>	One million cells in freezing media (per vial: 80% FBS, 10% DMSO, 10% MEM or 50% MEM, 40% FBS, 10% DMSO) in liquid nitrogen).	Impossible to keep viable frozen BMAds. Frozen isolated BMAds can be snap-frozen in liquid nitrogen and stored at least at -80°C for further analyses.
<b>RNA</b>	In Trizol (or similar) at -80°C	In Trizol (or similar) at -80°C
<b>Protein</b>	In protein lysis buffer at -80°C	In protein lysis buffer at -80°C
<b>Lipids</b>	Flash freezing in liquid nitrogen within 4 hours after surgery. Store at -80°C	Flash freezing in liquid nitrogen within 4 hours after surgery. Store at -80°C

cells) may remain attached to the floating BMAds. In addition, the evaluation of BMAd viability may be beneficial to discard cell alteration from the isolation procedure or for subsequent functional analysis.

### Evaluation of Cell Purity

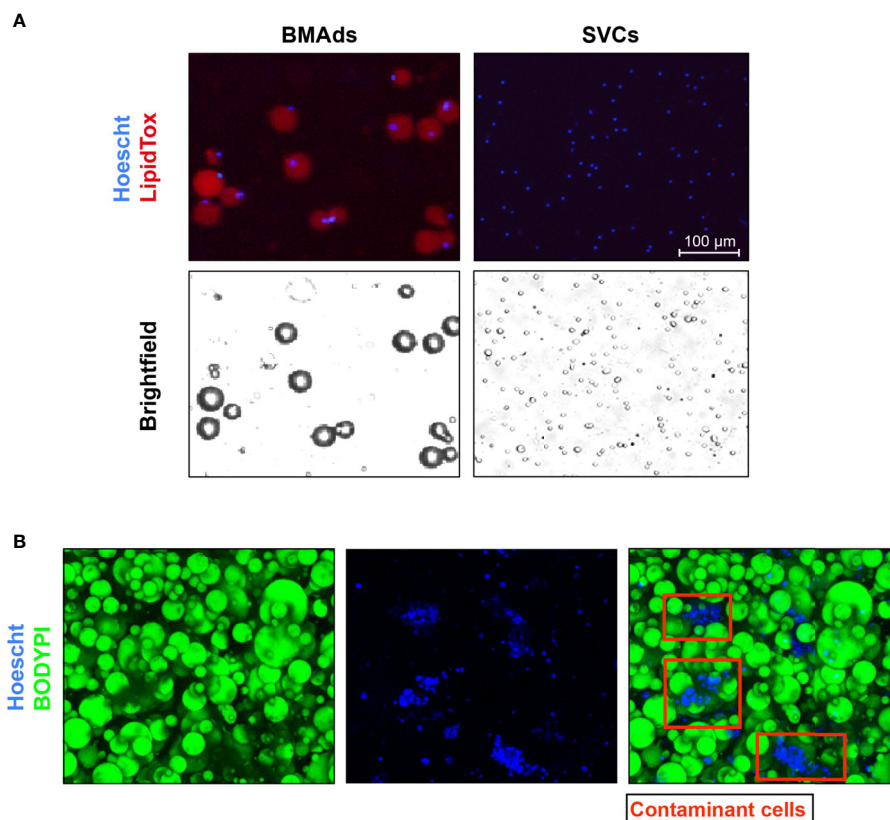
Immunofluorescence (IF) imaging is suitable to check both the morphology preservation following isolation and the size of BMAds, as well as potential contaminants. For good IF imaging it is better to embed BMAds in a matrix of fibrin gel (53). BMAds should contain a large lipid droplet filled with lipids, which can be stained using a fluorescent dye for neutral lipids such as BODIPY or LipidTox (**Figure 5A**), or the lipid-droplet marker Perilipin 1 (PLIN1) (53, 63). Nuclear staining (using DAPI, Topro 3 or Hoechst) can inform on the presence of contaminant cells that could remain attached to BMAds (**Figure 5B**) (53, 64). Though not yet reported for human BMAds, the presence of specific markers such as CD45 for leukocytes and CD11b for myeloid cells has already been performed for mouse isolated BMAds using immunostaining to discard monocyte or macrophage contaminants (69). Alternatively, flow cytometry analysis

following immunolabeling for markers of endothelial cells (CD31), stromal cells (CD105, CD90, CD24) has also been reported to validate the purity of human BMAds (63, 70).

BMAd purity is usually assessed by analyzing the expression of typical transcripts. Adiponectin (*ADIPOQ*), PPAR $\gamma$  (*PPARG*), leptin (*LEP*) (69) and *PLINI* (63) are used as classical adipocyte markers. Other genes such as integrin alpha-5 (*ITGA5*), *CD11B* (encoded by *ITGAM*) and CD45 (encoded by *PTPRC*) have also been used, respectively, as markers of stromal cells (both for BMSCs and stromal vascular cells within WAT), leukocytes and other hematopoietic cells (51, 65). Based on the specifics of the conducted study, other markers for osteoblasts [e.g. *RUNX2*, Osteocalcin (62)] and for osteoclasts (TRAcP, Cathepsin K) can also be helpful to test cell purity.

### Evaluation of Cell Viability

Based on previous studies investigating functional assays on BMAds (e.g. lipolysis) (53), metabolic studies require at least 50  $\mu$ l suspension (around 50,000 cells) per condition and several experimental conditions (with and without pharmacological agents) are needed. However, the number of BMAds at the end



**FIGURE 5** | Histological images demonstrating the purity of the BMAds. **(A)** BMAds were stained with Hoechst and LipidTox DeepRed. Stromal-vascular cells (SVCs) were included as a negative control for LipidTox staining. Stained cells were then analysed using a Nexcelom Vision Cellometer. Adipocyte images confirm that all nuclei are associated with unilocular lipid droplets and there are no lipid-free nuclei, suggesting an absence of contaminating non-adipocyte cell types. Analysis of the SVC fraction confirms that the LipidTox signal is dependent on the presence of lipid droplets. Scale bar represents 100  $\mu$ m. **(B)** BMAds were stained with BODIPY and Topro 3 to verify by IF the integrity of BMAds (BODIPY staining) and the purity of the adipocyte suspension. Nucleus staining show the presence of contaminant cells attached to adipocytes (red squares).

of the purification process is generally limited and they are very fragile. Of note, other functional tests with isolated BMADs have already been performed following a 24h culture in various media (62, 63) or ceiling culture (54, 65), yet the impact of this subculture has not been clearly assessed. Therefore, it should be emphasized that these functional metabolic assays are difficult to set up and do not seem appropriate to rapidly check the viability of BMADs. Other developments of functional tests are thus to be pursued based on our growing knowledge of BMAD metabolism.

## 5.2 Isolation and Culture of BMSCs

Within our working group, we reviewed two protocols for the isolation of BMSCs and BMAD-enriched fraction and validation of the purity of BMSCs obtained by BM aspirates from iliac crest or femoral head (55) (Table 2). Based on the source of BM aspirate, the yield of isolated BMSCs can differ (BM aspirate under local anesthesia vs BM aspirate taken during an orthopedic surgery procedure). In the following paragraphs, we describe a general protocol accompanied with the notes to highlight the critical steps and remarks which need to be considered during isolation.

### 5.2.1 Isolation and Transports

BMSCs are isolated from BM of “healthy volunteers” (non-relevant diagnosis prior to surgery), from hematological patients at the iliac crest, or from orthopedic patients upon gentle washing of the femoral head (obtained and fragmented into pieces during hip replacement surgery) (Figures 4B, D). An aliquot of one ml of BM diluted with heparin can be centrifuged 2,000 g, 10 min at 4°C to preserve BM plasma. After centrifugation, the supernatant (BM plasma) is transferred to a new tube and frozen at -80°C for subsequent analyses.

BM aspirates are obtained by aspiration of 5-10 mL from the iliac crest after infiltration of the area with local anesthetic (lidocaine, 10 mg/mL), in a 20 mL syringe and mixed 1:1 with basal media containing heparin (100 U/mL) or EDTA (1 mM)<sup>1,2</sup>.

After the isolation of the BM aspirate, the samples are transferred to a tube prepared with buffer containing anticoagulant and directly processed for isolation of BMSCs and BMAD-enriched fraction. The BM samples should be processed within a couple of hours, otherwise the viability of the cells can be compromised<sup>3</sup>.

#### Notes:

- 1- We do not observe a huge difference between heparin or EDTA as a source of anticoagulant in the buffer for transport of BM aspirates regarding the yield and viability of isolated BMSCs. Similar results are obtained by collecting BM aspirates into commercial EDTA tubes or by using 1 mM of EDTA (replacing Heparin) into PBS.
- 2- Before the procedure, Minimum Essential Medium (MEM) is prepared with heparin (100 U/ml) or with 1 mM EDTA and kept at 4°C.
- 3- The BM samples should be ideally transferred at room temperature and processed within two hours. The transport duration and temperature should be recorded, as described previously.

### 5.2.2 General Procedure for BMSC and BMAD-Enriched Fraction Isolation

#### Reagents and Equipment:

- Lymphoprep (StemCell, Scintila) (stored at RT, protected from a light) OR Ficoll (Ficoll-Paque™ PLUS (#17-1440-03, GE Healthcare)
- MEM (Invitrogen cat.no. 04193013M, stored at 4°C)
- MEM + 10% Fetal Bovine Serum (FBS) + 1% Penicilin/Streptomycin (stored at 4°C)
- Human Fibroblast Growth Factor (FGF)-2 (R&D system, # 233-FB-010) to add directly to the medium at 1 ng/mL (optional)
- Heparin (1,000 U/ml; stored at 4°C)
- Sterile filter (0.2 µM)
- 10 ml syringe
- Basket filter 100 µM
- Kwill or Falcon plastic tubes
- Small disposable needles
- Pasteur pipette
- Centrifuge with cooling and setting for non-break spinning

#### General Protocol (Figure 4):

- Dilute harvested BM aspirate 1:1 in PBS (with Ca and Mg), mix gently and immediately divide into two 50 ml Falcon tubes<sup>4</sup>.
- Add 10 ml Lymphoprep or 15 ml Ficoll by the kwill plastic tubes, which is placed at the bottom of the tube in order to create a gradient for the separation<sup>5</sup>.
- To obtain a floating BMAD-enriched fraction centrifuge samples at 1,050 g for 25-30 minutes at RT **without brake**. For BMSCs, centrifuge samples at 300g 30 min at RT **without brake**. After centrifugation, collect the BMAD-enriched fraction on the top by a pipette (Figures 3B, 4C) and follow the steps of washing and harvest in appropriate buffer depending on the subsequent analyses<sup>6,7</sup>.
- For the mononuclear cell component containing the BMSC fraction, isolate the buffy coat with a Pasteur pipette and transfer to the prepared 50 ml Falcon tube with preheated MEM medium. The buffy coats from both tubes are combined<sup>8</sup>. Higher BMSC yield can be obtained by also recovering the “serum” fraction above the buffy coat and below the floating BMAD-enriched fraction, which contains less cells but relatively enriched in BMSCs.
- Centrifuge tube at 1,050g for BMADs or at 300g for BMSCs for 10 min. Aspirate supernatant, disperse cell pellet in fresh complete medium (~ 20 ml), count the cells and seed them for *in vitro* cultivation<sup>9</sup>.

#### Notes:

- 4- Before the gradient separation (by Lymphoprep or Ficoll), the BM sample is filtered with a cell strainer (100 µm) to remove big clumps that can cause disturbances in the gradient. We apply a sterile plunger the filter to break the small aggregates and cell clusters.



- 5- *Lymphoprep* or *Ficoll* are aspirated from the bottle with a small disposable needle, which is changed to the kwill plastic needle appropriate for making the gradient.
- 6- BMAd-enriched fraction is washed 2-3 times with PBS/1%BSA and then aliquoted for RNA and protein sample by preservation in *Trizol* or protein lysis buffer, respectively, and stored at  $-80^{\circ}\text{C}$  (more details in **Table 4**). Note that this fraction contains a very significant amount of contaminating hematopoietic and immune cells, but it is the only source of enriched BMAd from iliac crest BM aspirates remaining from diagnostic procedures in hematological patients. Results associated to this fraction have to be interpreted within this context.
- 7- The BMAd-enriched fraction can also be preserved for lipid storage. For this purpose, the BMAd-enriched fraction is transferred to an Eppendorf tube, centrifuged at maximum speed for 5 minutes followed by collecting the lipid supernatant into a clean Eppendorf tube, flash freezing by submersion in liquid nitrogen and store at  $-80^{\circ}\text{C}$ . Lipid extraction is performed at a subsequent step prior to further analysis (HPLC, lipidomics).
- 8- The serum fraction above the buffy coat can also be collected, as it contains a significant number of BMSCs.
- 9- To improve cell growth, we add hFGF2 to the medium (at 1 ng/ml).

### 5.2.3 BMSC Cultivation

BMSCs are cultured at a density  $1 \times 10^5$  cells/cm<sup>2</sup> ( $1 \times 10^6$  cells per chamber slide)<sup>10</sup> in MEM containing 10% fetal bovine serum (FBS, GIBCO) and antibiotics at 1% (penicillin/streptomycin) incubated at 5% CO<sub>2</sub> and 37°C followed by completely changing the medium once a week<sup>11</sup>, while passaging at 70-80% confluence. The cells from passage 0 are cryopreserved in freezing media containing FBS, MEM and DMSO<sup>12</sup> (**Table 4**). For cryopreservation, cells in freezing media are immediately transferred into freezer at  $-80^{\circ}\text{C}$  for 24 hours before storing them in liquid nitrogen.

Cultured cells are sub-cultured<sup>13</sup> and further used for quality control tests (CFU-F, purity assessment, as described below (Section 5.2.5) and in previous literature (8) and subsequently studied in differentiation conditions when appropriate to induce adipogenesis, osteogenesis and/or chondrogenesis. Passage number should be recorded for all experiments<sup>13</sup>.

#### Notes:

- 10- We usually seed 10 million cells per T75 flask.
- 11- After 4-7 days the stromal cells have attached and started making colonies. Change medium without disturbing or perturbing cells. Media can be switched to Super-MEM (10% FBS/1% pen/strep/glutamax/nonessential amino acids/sodium pyruvate) to enrich the media for essential components needed for BMSC proliferation.
- 12- There are several options to prepare freezing media e.g. 80% FBS, 10% MEM and 10% DMSO (**Table 4**) or a variant recipe with 50% MEM, 40% FBS and 10% DMSO.
- 13- The cultured cells from passage 0 are usually sub-cultured 1:2 in order to expand for further analyses and functional assays.

Primary BMSCs are easily capable of passaging up to passage 6-7 but with each passage their capacity to proliferate and differentiate into different cell types is decreased, which affects their cellular and molecular properties. Also, they become more senescent as noticed when cells do not double within 4-5 days (71, 72).

### 5.2.4 Sample Storage

Storage of BMSCs and BMAd-enriched samples depends on the purpose of the intended analyses (more details in **Table 4**). The stability of RNA or protein samples is superior when the samples are processed completely, rather than storing them in RNA or protein lysis buffer as specified in **Table 4**. The storage of BMSCs is more stable in liquid nitrogen compared to  $-80^{\circ}\text{C}$ .

### 5.2.5 Quality Controls

There are several methods available to check the quality of isolated BMSC samples [as detailed in (8)]. Representative pictures of validated methods are depicted in **Figures 6, 7**.

#### Cell Viability

The cell viability of isolated BMSCs can be verified by Trypan blue staining or by flow cytometry using 7-AAD staining (7- amino-actinomycin D; marker of dead cells) or Live/dead viability assay (73).

#### Purity (Hematopoietic, Endothelial Cell Contamination)

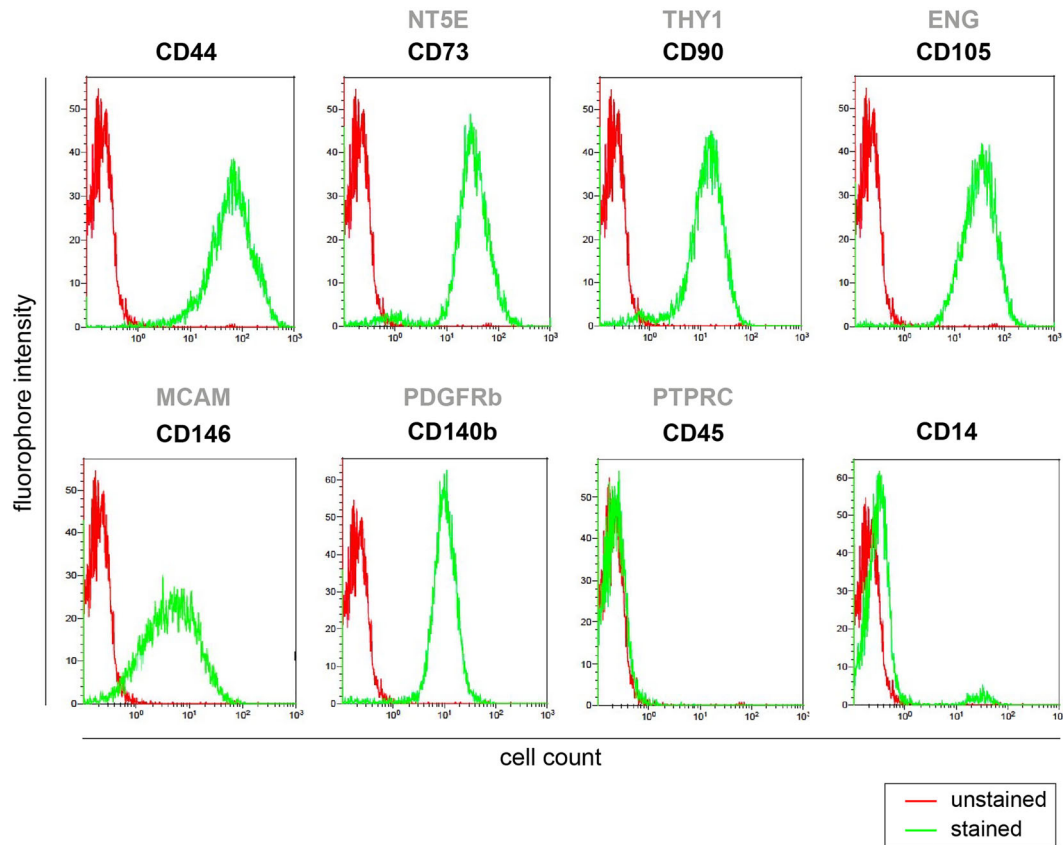
The purity of BMSCs can be checked by flow cytometry using CD markers for BMSCs (e.g. CD73, CD271, CD146, CD90, CD105), hematopoietic cells (e.g. CD45 neg), erythroid cells (e.g. CD235a neg) and monocytes/macrophages (e.g. CD14 neg, CD16 neg) (**Figure 6** for representative dot plots for BMSC purity) (56, 59–61).

#### CFU-F Assay

In order to test stem cell potency of isolated BMSCs (**Figure 7A**), we perform a CFU-F assay, i.e. capability of stem/progenitor cells to form colonies. We seed around 1 million isolated BMSC cells in T25 flask and count number of colonies grown after 14 days. CFU-F assays are done through dilution of the test BMSC population and counting at day 14 after fixation and staining with either methylene blue or crystal violet (**Figure 7B**) (56, 59–61).

#### Bi/Tri-Lineage Differentiation Assay

To test differentiation potential of isolated BMSCs (70, 74), we seed and culture the cells in the conditions to differentiate into osteoblast (bone forming cells), adipocyte (BMAT forming cells), chondrocyte (cartilage forming cells) (**Figures 7C–E**). Each of these differentiation protocols can vary among different laboratories (8). For evaluation of osteoblast differentiation, we perform alkaline phosphatase (ALP) activity assay, Alizarin/ALP staining, gene expression of osteoblast genes (e.g. *RUNX2*, *Osteocalcin (BGLAP)*, *ALPL*); for adipocyte differentiation these are Oil Red O or Nile Red staining, gene expression of adipocyte genes (*PPARG*, *LPL*, *ADIPOQ*, *LEP*), and for chondrocyte differentiation these are Alcian Blue staining, gene expression of chondrocyte genes (e.g. *SOX9*, *COL2A1*, *ACAN*) are evaluated (56, 59–61, 70, 74).



**FIGURE 6** | BMSC purity assessment by flow cytometry. Screening of stem cell surface markers expression (positive for CD44, CD73, CD90, CD146, CD140b, CD105, and negative for CD45 and CD14) measured by flow cytometry in primary human BMSCs isolated from iliac crest cultured *in vitro* at passage p0.

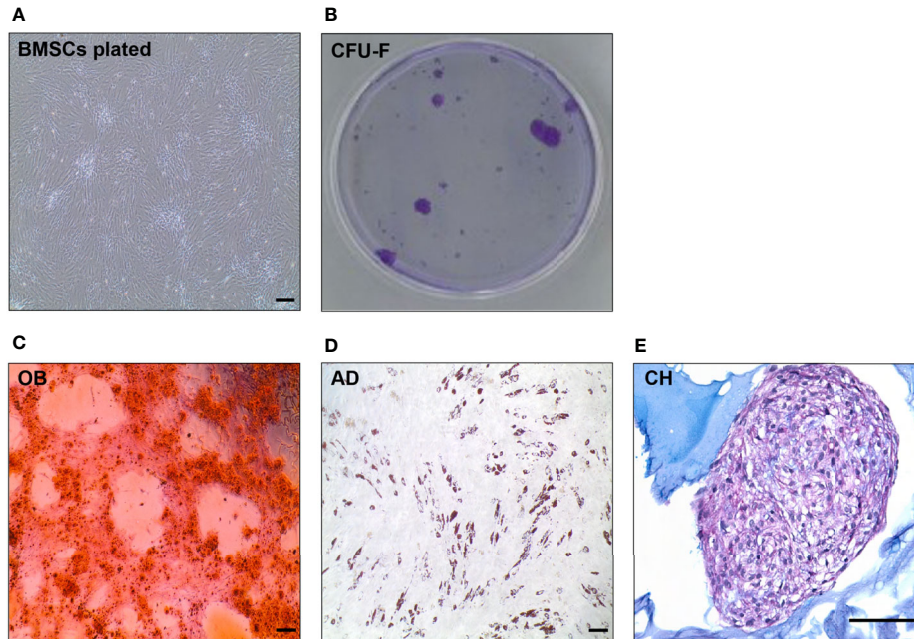
For the purpose of biobanking it is important to keep all necessary information related to the quality of BMSC samples. However, additional comparative studies are still needed to define the crucial parameters that influence BMSC quality, and which therefore are needed for interpreting the analyses of biobank samples.

## 6 BMAS STRATEGY TO HARMONIZE BMA-RELATED BIOBANKING AND FUTURE PERSPECTIVES

Increased numbers of BMA-related publications in recent years using different sources of BMAT raised important questions about how to compare and reproduce the data in such a young and dynamic field. This raises an opportunity to create BMA biobanks that can provide material for other researchers and generate improved harmonization in future studies. Therefore, a standard protocol would be preferred to allow comparison of samples obtained from different institutions with specifications of critical points, which have been raised in this position paper based on the evaluation of the current literature.

While isolation protocols and collections for BMSCs have been proposed from various laboratories and private companies for long standing, those relative to BMADs are more recent and heterogenous. We currently validated three protocols from which we generated a general procedure to isolate BMADs using collagenase. Yet, it can be acknowledged that this digestion step (i.e. type of collagenase, duration of collagenase treatment, etc.) has to be further standardized and its impact on adipocyte selection, viability and functionality further characterized. When pure BMAD suspension is required or if the BMADs are to be compared with WAT adipocytes, the use of collagenase is recommended to prevent contamination from other cell types and to ensure that differences between adipocyte isolation procedures is not a confounding factor (65).

As technical developments in transcriptomics and other -omics approaches performed in various other tissues could be relevant for future BMAD analyses, we provide the following suggestions regarding next generation sequencing approaches based on preliminary and often unpublished results from different laboratories belonging to the consortium. Indeed, several factors have been determined as critical for single cell RNA sequencing (scRNA-seq) and other -omics approaches. We suggest to minimize as much as possible manipulation of the cell prior to any -omics or



**FIGURE 7** | *In vitro* evaluation of BMSC quality (BMSC culture, CFU-C, tri-differentiation). **(A)** Representative picture of spindle-like shape cells in *in vitro* culture of human BMSCs. **(B)** CFU-F of BMSCs after 14 days *in vitro* culture visualized by Violet Blue in a petri dish. **(C)** Alizarin staining of mineralized matrix in 10 days osteoblast (OB) culture differentiated from primary BMSCs. **(D)** Oil Red O staining of neutral lipids in a 10 days adipocyte (AD) culture differentiated from primary BMSCs. **(E)** Alcian Blue staining of a 21 days chondrocyte (CH) culture differentiated from BMSCs. Scale bar represents 200  $\mu\text{m}$  in all the pictures.

transcriptomic approach. A very recent studies suggest that routine steps such as collagenase digestion can have a detrimental effect on the cell's transcriptome for all single cell analyses and other omics approaches. If to be used, the time of collagenase treatment or other digestion enzymes should be as short as possible as it has been shown to drastically affect the transcriptome, resulting in that the most important gene signature is the digestion itself (75).

Furthermore, a recent study determined that flash freezing (cryopreservation) of cells from BM aspirates prior to scRNA-seq does not affect the transcriptome (76). By doing so, multiple BM samples can be analyzed simultaneously, which would drastically reduce the batch effect that is often visible for single cell RNA-sequencing experiments. Since currently available scRNA-seq analyses are thus far challenging (77), the compatibility of cryopreservation with single nuclei RNA-seq could constitute a very interesting approach to determine and better characterize the BMAT transcriptional landscape. Indeed, it is today impossible to process an entire adipocyte by standard scRNA-seq, since current technologies use pure oil to create the encapsulation droplets. Partial adipocyte lysis, which is hard to avoid due to their natural fragility, prevents the formation of the droplet emulsion and ruins the chip for further use. However, nuclei extraction from BMADs is still very challenging and current procedures still need to be improved. Altogether, the WG suggests to limit the use of collagenase digestion as much as possible while collecting BMAT for these specific transcriptomic analyses since an absolute cell purity is not required and such a digestion step could interfere with subsequent analyses.

Finally, critical differences between our protocols should be further discussed and validated (e.g. precise requirements and specifications for clinical sample isolation and transportation) or improved (easier and standardized assays to assess the quality of samples, increased yield of isolated materials) for harmonization purposes. Meanwhile our current work paves the way for BMAT biobanking perspectives and next generation sequencing. We thus strongly encourage future publications to provide a detailed description of patient characteristics, BMA source and sampling, isolation procedures and validity tests to enhance standardization in the field.

Last but not least, we should pay attention to clinical/molecular data and the anonymization of participants' personal information as they are aimed to be shared among different institutes. At all times, the utmost care should be taken to deidentify the samples obtained from study participants (as discussed in Section 2.2). The technological advancements to perform genetic analyses have advanced to such an extent that certain approaches, such as RNA sequencing and single cell sequencing can allow for identification of the individual. Therefore, there is a task at hand to create awareness among researchers to minimize risks of deidentification.

## Future Perspectives

Although we are still several steps away from achieving this, harmonizing protocols globally would greatly enhance the quality and interpretation of BMA-associated outcomes and yield increased impact in the field. A longer-term goal of this



WG is to establish a common protocol or minimal conditions that everyone could use. In an attempt to achieve this, one action of the WG will be to setup a study in which the same material will be processed in different labs, using an identical protocol followed by careful evaluation of the outcomes.

It is important to emphasize that at the beginning of creating a BMA biobank one needs to think about preparation of broad consent for future research, which may help to facilitate harmonization as well and, as it is ethically valid, this should be recommended for biobank research (9). In addition, harmonizing sample collection and storage will facilitate medical ethical boards of institutes of collaborating universities about the synchronous sample characteristics of incoming or outgoing samples in case of international studies. One of the other things that the BMAS WG on Biobanking has in mind is to develop a Global Material Transfer Agreement (GMTA) that would allow for easier acceptance and transport of BMA-related samples between institutes across the globe.

Altogether, this position paper should create awareness and facilitate scientists involved in BMA that plan to or continue studies in which collection, storage and analysis of BMA-related samples are involved.

## AUTHOR CONTRIBUTIONS

SL, MT, BW and BE coordinated the writing and wrote the section on BMAS strategy. FBJ, KI, IP and BE wrote sections on background, informed consent and patient information. TLA with SL and MT wrote the section on biological materials. SL, MT, MR, BW, ON, CA and WC wrote the section on methodology of cell isolation and analysis. FB-J generated the reference library. WC, SL, TA, CA, MT, BW and BE contributed to and composed the figures. All authors contributed to the article and approved the submitted version.

## FUNDING

MR was funded by the NIH/NIGMS (P20GM121301 and U54GM115516), NIH/NCI (1R37CA245330-01A1), and the American Cancer Society (#133077-RSG-19-037-01-LIB). MT

## REFERENCES

- Bani Hassan E, Ghasem-Zadeh A, Imani M, Kutaiba N, Wright DK, Sephehrizadeh T, et al. Bone Marrow Adipose Tissue Quantification by Imaging. *Curr Osteoporos Rep* (2019) 17(6):416–28. doi: 10.1007/s11914-019-00539-5
- de Paula FJA, Rosen CJ. Marrow Adipocytes: Origin, Structure, and Function. *Annu Rev Physiol* (2020) 82:461–84. doi: 10.1146/annurev-physiol-021119-034513
- Penel G, Kerckhofs G, Chauveau C. Brief Report From the 4th International Meeting on Bone Marrow Adiposity (Bma2018). *Front Endocrinol (Lausanne)* (2019) 10:691. doi: 10.3389/fendo.2019.00691
- Sebo ZL, Rendina-Ruedy E, Ables GP, Lindskog DM, Rodeheffer MS, Fazeli PK, et al. Bone Marrow Adiposity: Basic and Clinical Implications. *Endocr Rev* (2019) 40(5):1187–206. doi: 10.1210/er.2018-00138
- Bartelt A, Koehne T, Todter K, Reimer R, Muller B, Behler-Janbeck F, et al. Quantification of Bone Fatty Acid Metabolism and Its Regulation by Adipocyte Lipoprotein Lipase. *Int J Mol Sci* (2017) 18(6):1264. doi: 10.3390/ijms18061264
- Mate S, Kampf M, Rodle W, Kraus S, Proynova R, Silander K, et al. Pan-European Data Harmonization for Biobanks in. *Appl Clin Inform* (2019) 10(4):679–92. doi: 10.1055/s-0039-1695793
- Bravenboer N, Bredella MA, Chauveau C, Corsi A, Douni E, Ferris WF, et al. Standardised Nomenclature, Abbreviations, and Units for the Study of Bone Marrow Adiposity: Report of the Nomenclature Working Group of the International Bone Marrow Adiposity Society. *Front Endocrinol (Lausanne)* (2019) 10:923. doi: 10.3389/fendo.2019.00923
- Tratwal J, Labella R, Bravenboer N, Kerckhofs G, Douni E, Scheller EL, et al. Reporting Guidelines, Review of Methodological Standards, and Challenges Toward Harmonization in Bone Marrow Adiposity Research. Report of the

was funded by the Czech Science Foundation (GACR 20-03586S), EFSD/NovoNordisk foundation Future leaders award (NNF20SA0066174). ON and BW were funded by the Swiss National Science Foundation Sinergia program (CRSII5\_186271). SL was funded by MSD Avenir Foundation (ADIMETABONE project) and the University of Littoral-Côte d'Opale (ULCO). WC was funded by the Medical Research Council (MR/M021394/1 and MR/S010505/1). CA was funded by La Ligue contre le cancer (Equipe Labellisée) and INCa PLBIO20-028. IP was funded by NIH/NCI (1R01 CA251394 and 1R01 CA181189). KI was funded by the Academy of Finland (325498). TA was funded by the VELUX foundation (25723) and the Region of Southern Denmark (20/14282).

## ACKNOWLEDGMENTS

Acknowledgments to Dr. Li Chen, KMEB, Odense, DK for representative pictures of Alcian Blue stained chondrocytes of human BMSCs and to David Estève, Toulouse, France for the representative picture of BMAd staining with BODIPY and Topro 3 to evaluate cell contamination. The involvements of orthopaedic surgeons – Dr Stéphane Cherix (Department of orthopaedic and traumatology, Lausanne University Hospital, CHUV, Switzerland), Prof Gilles Pasquier (CHU Lille, France), Gavin Macpherson (Department of Orthopaedic Surgery, Royal Infirmary of Edinburgh, UK), Dr Charlotte Ejersted and Dr Bjarke Viberg (Department of Endocrinology and Department of Orthopaedic Surgery, Odense University Hospital, Denmark), Dr Lene W.T. Boel (Department of Forensic Medicine, Aarhus University, Denmark), Prof Moustapha Kassem, Dr Morten Frost and Dr Jens-Jacob Lauterlein (Department of Endocrinology, Odense University Hospital, Denmark), Prof Nicolas Reina (Department of orthopaedic and traumatology, CHU Toulouse, France) and BRC staff – Dr Patrick Gele and Bertrand Accart (Lille, France) and the Lausanne University Hospital, CHUV, Bone Marrow diagnostic lab and Hematology staff (Prof. Olivier Spertini, Dr Sabine Blum, Dr Mariangela Costanza, Valentin Basset, Stéphane Quarroz) are all esteemed and acknowledged. We are extremely grateful to all the patients and families who have generously consented to sample and data collection, making our research possible.



- Methodologies Working Group of the International Bone Marrow Adiposity Society. *Front Endocrinol* (2020) 11:65. doi: 10.3389/fendo.2020.00065
9. Hansson MG, Dillner J, Bartram CR, Carlson JA, Helgesson G. Should Donors be Allowed to Give Broad Consent to Future Biobank Research? *Lancet Oncol* (2006) 7(3):266–9. doi: 10.1016/S1470-2045(06)70618-0
  10. Charmantier I. Carl Linnaeus and the Visual Representation of Nature. *Hist Stud Nat Sci* (2011) 41(4):365–404. doi: 10.1525/hsns.2011.41.4.365
  11. Funk VA. Collections-Based Science in the 21st Century. *J Syst Evol* (2018) 56(3):175–93. doi: 10.1111/jse.12315
  12. Loft S, Poulsen HE. Cancer Risk and Oxidative DNA Damage in Man. *J Mol Med (Berl)* (1996) 74(6):297–312. doi: 10.1007/BF00207507
  13. Hewitt R, Watson P. Defining Biobank. *Biopreserv Biobank* (2013) 11(5):309–15. doi: 10.1089/bio.2013.0042
  14. Larsson A. The Need for Research Infrastructures: A Narrative Review of Large-Scale Research Infrastructures in Biobanking. *Biopreserv Biobank* (2017) 15(4):375–83. doi: 10.1089/bio.2016.0103
  15. Mayrhofer MT, Holub P, Wutte A, Litton JE. BMRI-ERIC: The Novel Gateway to Biobanks. From Humans to Humans. *Bundesgesundheitsblatt Gesundheitsforschung Gesundheitsschutz* (2016) 59(3):379–84. doi: 10.1007/s00103-015-2301-8
  16. Kinkorova J. Biobanks in the Era of Personalized Medicine: Objectives, Challenges, and Innovation: Overview. *EPMA J* (2015) 7:4. doi: 10.1186/s13167-016-0053-7
  17. Paskal W, Paskal AM, Debski T, Gryziak M, Jaworowski J. Aspects of Modern Biobank Activity - Comprehensive Review. *Pathol Oncol Res* (2018) 24(4):771–85. doi: 10.1007/s12253-018-0418-4
  18. Fransson MN, Rial-Sebbag E, Brochhausen M, Litton JE. Toward a Common Language for Biobanking. *Eur J Hum Genet* (2015) 23(1):22–8. doi: 10.1038/ejhg.2014.45
  19. Sudlow C, Gallacher J, Allen N, Beral V, Burton P, Danesh J, et al. UK Biobank: An Open Access Resource for Identifying the Causes of a Wide Range of Complex Diseases of Middle and Old Age. *PLoS Med* (2015) 12(3):e1001779. doi: 10.1371/journal.pmed.1001779
  20. Gottweis H, Zatloukal K. Biobank Governance: Trends and Perspectives. *Pathobiology* (2007) 74(4):206–11. doi: 10.1159/000104446
  21. Coppola L, Cianflone A, Grimaldi AM, Inoronato M, Bevilacqua P, Messina F, et al. Biobanking in Health Care: Evolution and Future Directions. *J Transl Med* (2019) 17(1):172. doi: 10.1186/s12967-019-1922-3
  22. Peakman T, Elliott P. Current Standards for the Storage of Human Samples in Biobanks. *Genome Med* (2010) 2(10):72. doi: 10.1186/gm193
  23. OECD. *OECD Guidelines on Human Biobanks and Genetic Research Databases* (2009). Available at: <http://www.oecd.org/sti/emerging-tech/44054609.pdf> (Accessed 6th of August 2020).
  24. OECD. *OECD Best Practice Guidelines for Biological Resource Centres* (2007). Available at: <http://www.oecd.org/sti/emerging-tech/38777417.pdf> (Accessed 6th of August 2020).
  25. Muller H, Dagher G, Loibner M, Stumptner C, Kungl P, Zatloukal K. Biobanks for Life Sciences and Personalized Medicine: Importance of Standardization, Biosafety, Biosecurity, and Data Management. *Curr Opin Biotechnol* (2020) 65:45–51. doi: 10.1016/j.copbio.2019.12.004
  26. Jefford M, Moore R. Improvement of Informed Consent and the Quality of Consent Documents. *Lancet Oncol* (2008) 9(5):485–93. doi: 10.1016/S1470-2045(08)70128-1
  27. Master Z, Nelson E, Murdoch B, Caulfield T. Biobanks, Consent and Claims of Consensus. *Nat Methods* (2012) 9(9):885–8. doi: 10.1038/nmeth.2142
  28. Siminoff LA, Wilson-Genderson M, Mosavel M, Barker L, Trgina J, Traino HM. Confidentiality in Biobanking Research: A Comparison of Donor and Nondonor Families' Understanding of Risks. *Genet Test Mol Biomark* (2017) 21(3):171–7. doi: 10.1089/gtmb.2016.0407
  29. Udesky JO, Boronow KE, Brown P, Perovich LJ, Brody JG. Perceived Risks, Benefits, and Interest in Participating in Environmental Health Studies That Share Personal Exposure Data: A U.S. Survey of Prospective Participants. *J Empir Res Hum Res Ethics* (2020) 15(5):425–42. doi: 10.1177/1556264620903595
  30. Abbing HD. Unesco. International Declaration on Human Genetic Data. *Eur J Health Law* (2004) 11(1):93–107. doi: 10.1163/157180904323042399
  31. WHO. *Templates for Informed Consent Forms* (2020). Available at: <https://www.who.int/groups/research-ethics-review-committee/guidelines-on-submitting-research-proposals-for-ethics-review/templates-for-informed-consent-forms> (Accessed 30th of November 2020).
  32. Bleiberg H, Decoster G, de Gramont A, Rougier P, Sobrero A, Benson A, et al. A Need to Simplify Informed Consent Documents in Cancer Clinical Trials. A Position Paper of the ARCAD Group. *Ann Oncol* (2017) 28(5):922–30. doi: 10.1093/annonc/mdx050
  33. Council of Europe. *Guide for the Implementation of the Principle of Prohibition of Financial Gain With Respect to the Human Body and Its Parts From Living or Deceased Donors* (2018). Available at: <https://rm.coe.int/guide-financial-gain/16807bfc9a> (Accessed 06th of May 2021).
  34. Hayflick L. Paying for Tissue: The Case of WI-38. *Science* (2012) 337(6100):1292. doi: 10.1126/science.12292-a
  35. Truog RD, Kesselheim AS, Joffe S. Research Ethics. Paying Patients for Their Tissue: The Legacy of Henrietta Lacks. *Science* (2012) 337(6090):37–8. doi: 10.1126/science.1216888
  36. Le Ster C, Lasbleiz J, Kannengiesser S, Guillin R, Gambarota G, Saint-Jalmes H. A Fast Method for the Quantification of Fat Fraction and Relaxation Times: Comparison of Five Sites of Bone Marrow. *Magnet Reson Imaging* (2017) 39:157–61. doi: 10.1016/j.mri.2017.03.001
  37. Costa S, Reagan MR. Therapeutic Irradiation: Consequences for Bone and Bone Marrow Adipose Tissue. *Front Endocrinol* (2019) 10:587. doi: 10.3389/fendo.2019.00587
  38. Rharass T, Lucas S. Mechanisms in Endocrinology: Bone Marrow Adiposity and Bone, a Bad Romance? *Eur J Endocrinol* (2018) 179(4):R165–78. doi: 10.1530/EJE-18-0182
  39. Suchacki KJ, Cawthorn WP. Molecular Interaction of Bone Marrow Adipose Tissue With Energy Metabolism. *Curr Mol Biol Rep* (2018) 4(2):41–9. doi: 10.1007/s40610-018-0096-8
  40. Vande Berg BC, Gilon R, Malgheem J, Lecouvet F, Depresseux G, et al. Correlation Between Baseline Femoral Neck Marrow Status and the Development of Femoral Head Osteonecrosis in Corticosteroid-Treated Patients: A Longitudinal Study by MR Imaging. *Eur J Radiol* (2006) 58(3):444–9. doi: 10.1016/j.ejrad.2006.01.009
  41. Veldhuis-Vlug AG, Rosen CJ. Clinical Implications of Bone Marrow Adiposity. *J Intern Med* (2018) 283(2):121–39. doi: 10.1111/joim.12718
  42. Lee SH, Erber WN, Porwit A, Tomonaga M, Peterson LC. ICSH Guidelines for the Standardization of Bone Marrow Specimens and Reports. *Int Jnl Lab Hem* (2008) 30:349–64. doi: 10.1111/j.1751-553X.2008.01100.x
  43. Gillet C, Dalla Valle A, Gaspard N, Spruyt D, Vertongen P, Lechanteur J, et al. Osteonecrosis of the Femoral Head: Lipotoxicity Exacerbation in MSC and Modifications of the Bone Marrow Fluid. *Endocrinology* (2017) 158(3):490–502. doi: 10.1210/en.2016-1687
  44. Miranda M, Pino AM, Fuenzalida K, Rosen CJ, Seitz G, Rodriguez JP. Characterization of Fatty Acid Composition in Bone Marrow Fluid From Postmenopausal Women: Modification After Hip Fracture. *J Cell Biochem* (2016) 117(10):2370–6. doi: 10.1002/jcb.25534
  45. Pino AM, Rios S, Astudillo P, Fernandez M, Figueroa P, Seitz G, et al. Concentration of Adipogenic and Proinflammatory Cytokines in the Bone Marrow Supernatant Fluid of Osteoporotic Women. *J Bone Miner Res* (2010) 25(3):492–8. doi: 10.1359/jbmr.090802
  46. Kirwan JA, Brennan L, Broadhurst D, Fiehn O, Cascante M, Dunn WB, et al. Preanalytical Processing and Biobanking Procedures of Biological Samples for Metabolomics Research: A White Paper, Community Perspective (for “Precision Medicine and Pharmacometabolomics Task Group”-The Metabolomics Society Initiative). *Clin Chem* (2018) 64(8):1158–82. doi: 10.1373/clinchem.2018.287045
  47. Yin P, Peter A, Franken H, Zhao X, Neukamm SS, Rosenbaum L, et al. Preanalytical Aspects and Sample Quality Assessment in Metabolomics Studies of Human Blood. *Clin Chem* (2013) 59(5):833–45. doi: 10.1373/clinchem.2012.199257
  48. Gonzalez-Dominguez R, Gonzalez-Dominguez A, Sayago A, Fernandez-Recamales A. Recommendations and Best Practices for Standardizing the Pre-Analytical Processing of Blood and Urine Samples in Metabolomics. *Metabolites* (2020) 10(6):229. doi: 10.3390/metabo10060229
  49. Vasikaran S, Eastell R, Bruyere O, Foldes AJ, Garnero P, Griesmacher A, et al. Markers of Bone Turnover for the Prediction of Fracture Risk and Monitoring of Osteoporosis Treatment: A Need for International Reference Standards. *Osteoporos Int* (2011) 22(2):391–420. doi: 10.1007/s00198-010-1501-1

50. Ferland-McCollough D, Masseli D, Spinetti G, Sambataro M, Sullivan N, Blom A, et al. MCP-1 Feedback Loop Between Adipocytes and Mesenchymal Stromal Cells Causes Fat Accumulation and Contributes to Hematopoietic Stem Cell Rarefaction in the Bone Marrow of Diabetic Patients. *Diabetes* (2018) 67(7):1380–94. doi: 10.2337/db18-0044
51. Suchacki KJ, Tavares AAS, Mattiucci D, Scheller EL, Papanastasiou G, Gray C, et al. Bone Marrow Adipose Tissue Is a Unique Adipose Subtype With Distinct Roles in Glucose Homeostasis. *Nat Commun* (2020) 11(1):3097. doi: 10.1038/s41467-020-16878-2
52. Griffith JF, Yeung DKW, Ahuja AT, Choy CWY, Mei WY, Lam SSL, et al. A Study of Bone Marrow and Subcutaneous Fatty Acid Composition in Subjects of Varying Bone Mineral Density. *Bone* (2009) 44(6):1092–6. doi: 10.1016/j.bone.2009.02.022
53. Attané C, Estève D, Chaoui K, Iacovoni JS, Corre J, Moutahir M, et al. Human Bone Marrow Is Comprised of Adipocytes With Specific Lipid Metabolism. *Cell Rep* (2020) 30(4):949–58.e6. doi: 10.1016/j.celrep.2019.12.089
54. Poloni A, Maurizi G, Serrani F, Mancini S, Zingaretti MC, Frontini A, et al. Molecular and Functional Characterization of Human Bone Marrow Adipocytes. *Exp Hematol* (2013) 41(6):558–66.e2. doi: 10.1016/j.exphem.2013.02.005
55. Tencerova M, Frost M, Figeac F, Nielsen TK, Ali D, Lauterlein JL, et al. Obesity-Associated Hypermetabolism and Accelerated Senescence of Bone Marrow Stromal Stem Cells Suggest a Potential Mechanism for Bone Fragility. *Cell Rep* (2019) 27(7):2050–62.e6. doi: 10.1016/j.celrep.2019.04.066
56. Caplan AI. Mesenchymal Stem Cells. *J Orthop Res* (1991) 9(5):641–50. doi: 10.1002/jor.1100090504
57. Tanavde V, Vaz C, Rao MS, Vemuri MC, Pochampally RR. Research Using Mesenchymal Stem/Stromal Cells: Quality Metric Towards Developing a Reference Material. *Cytotherapy* (2015) 17(9):1169–77. doi: 10.1016/j.jcyt.2015.07.008
58. Pham TT, Ivaska KK, Hannukainen JC, Virtanen KA, Lidell ME, Enerback S, et al. Human Bone Marrow Adipose Tissue Is a Metabolically Active and Insulin-Sensitive Distinct Fat Depot. *J Clin Endocrinol Metab* (2020) 105(7):2300–10. doi: 10.1210/clinem/dgaa216
59. Bianco P, Gehron Robey P. Marrow Stromal Stem Cells. *J Clin Invest* (2000) 105(12):1663–8. doi: 10.1172/JCI10413
60. Bianco P, Riminucci M, Gronthos S, Robey PG. Bone Marrow Stromal Stem Cells: Nature, Biology, and Potential Applications. *Stem Cells (Dayton Ohio)* (2001) 19(3):180–92. doi: 10.1634/stemcells.19-3-180
61. Bianco P, Robey PG, Simmons PJ. Mesenchymal Stem Cells: Revisiting History, Concepts, and Assays. *Cell Stem Cell* (2008) 2(4):313–9. doi: 10.1016/j.stem.2008.03.002
62. Goto H, Hozumi A, Osaki M, Fukushima T, Sakamoto K, Yonekura A, et al. Primary Human Bone Marrow Adipocytes Support TNF- $\alpha$ -Induced Osteoclast Differentiation and Function Through RANKL Expression. *Cytokine* (2011) 56(3):662–8. doi: 10.1016/j.cyto.2011.09.005
63. Miggitsch C, Meryk A, Naismith E, Pangrazzi L, Ejaz A, Jenewein B, et al. Human Bone Marrow Adipocytes Display Distinct Immune Regulatory Properties. *EBioMedicine* (2019) 46:387–98. doi: 10.1016/j.ebiom.2019.07.023
64. Attané C, Estève D, Moutahir M, Reina N, Muller C. A Protocol for Human Bone Marrow Adipocyte Isolation and Purification. *Star Protoc* (2021) 2(3). doi: 10.1016/j.xpro.2021.100629
65. Mattiucci D, Maurizi G, Izzi V, Cenci L, Ciarlantini M, Mancini S, et al. Bone Marrow Adipocytes Support Hematopoietic Stem Cell Survival. *J Cell Physiol* (2018) 233(2):1500–11. doi: 10.1002/jcp.26037
66. Rodbell M. Localization of Lipoprotein Lipase in Fat Cells of Rat Adipose Tissue. *J Biol Chem* (1964) 239:753–5.
67. Craft CS, Scheller EL. Evolution of the Marrow Adipose Tissue Microenvironment. *Calcif Tissue Int* (2016) 100:461–75. doi: 10.1007/s00223-016-0168-9
68. Lafontan M. Historical Perspectives in Fat Cell Biology: The Fat Cell as a Model for the Investigation of Hormonal and Metabolic Pathways. *Am J Physiol Cell Physiol* (2012) 302(2):C327–59. doi: 10.1152/ajpcell.00168.2011
69. Liu L-F, Shen W-J, Ueno M, Patel S, Kraemer FB. Characterization of Age-Related Gene Expression Profiling in Bone Marrow and Epididymal Adipocytes. *BMC Genomics* (2011) 12:212. doi: 10.1186/1471-2164-12-212
70. Dominici M, Le Blanc K, Mueller I, Slaper-Cortenbach I, Marini F, Krause D, et al. Minimal Criteria for Defining Multipotent Mesenchymal Stromal Cells. The International Society for Cellular Therapy Position Statement. *Cytotherapy* (2006) 8(4):315–7. doi: 10.1080/14653240600855905
71. Andrzejewska A, Catar R, Schoon J, Qazi HT, Sass FA, Jacobi D, et al. Multi-Parameter Analysis of Biobanked Human Bone Marrow Stromal Cells Shows Little Influence for Donor Age and Mild Comorbidities on Phenotypic and Functional Properties. *Front Immunol* (2019) 10:2474. doi: 10.3389/fimmu.2019.02474
72. Vidal MA, Walker NJ, Napoli E, Borjesson DL. Evaluation of Senescence in Mesenchymal Stem Cells Isolated From Equine Bone Marrow, Adipose Tissue, and Umbilical Cord Tissue. *Stem Cells Dev* (2012) 21(2):273–83. doi: 10.1089/scd.2010.0589
73. Xiao M, Dooley DC. Assessment of Cell Viability and Apoptosis in Human Umbilical Cord Blood Following Storage. *J Hematother Stem Cell Res* (2003) 12(1):115–22. doi: 10.1089/152581603321210190
74. Viswanathan S, Shi Y, Galipeau J, Krampera M, Leblanc K, Martin I, et al. Mesenchymal Stem Versus Stromal Cells: International Society for Cell & Gene Therapy (ISCT<sup>®</sup>) Mesenchymal Stromal Cell Committee Position Statement on Nomenclature. *Cytotherapy* (2019) 21(10):1019–24. doi: 10.1016/j.jcyt.2019.08.002
75. Machado L, Geara P, Camps J, Dos Santos M, Teixeira-Clerc F, Van Herck J, et al. Tissue Damage Induces a Conserved Stress Response That Initiates Quiescent Muscle Stem Cell Activation. *Cell Stem Cell* (2021) 28(6):1125–35. doi: 10.1016/j.stem.2021.01.017
76. Chen D, Abu Zaid MI, Reiter JL, Czader M, Wang L, McGuire P, et al. Cryopreservation Preserves Cell-Type Composition and Gene Expression Profiles in Bone Marrow Aspirates From Multiple Myeloma Patients. *Front Genet* (2021) 12:663487. doi: 10.3389/fgene.2021.663487
77. Deutsch A, Feng D, Pessin JE, Shinoda K. The Impact of Single-Cell Genomics on Adipose Tissue Research. *Int J Mol Sci* (2020) 21(13):4773. doi: 10.3390/ijms21134773

**Conflict of Interest:** BE is chair and coordinator of the BMAS Working Group on Biobanking. All authors are members of the BMAS Working Group on Biobanking. BE, WC and ON are members of the BMAS Executive Board. SL, MR and MT are members of the BMAS Scientific Board.

**Publisher's Note:** All claims expressed in this article are solely those of the authors and do not necessarily represent those of their affiliated organizations, or those of the publisher, the editors and the reviewers. Any product that may be evaluated in this article, or claim that may be made by its manufacturer, is not guaranteed or endorsed by the publisher.

Copyright © 2021 Lucas, Tencerova, von der Weid, Andersen, Attané, Behler-Janbeck, Cawthorn, Ivaska, Naveiras, Podgorski, Reagan and van der Eerden. This is an open-access article distributed under the terms of the Creative Commons Attribution License (CC BY). The use, distribution or reproduction in other forums is permitted, provided the original author(s) and the copyright owner(s) are credited and that the original publication in this journal is cited, in accordance with accepted academic practice. No use, distribution or reproduction is permitted which does not comply with these terms.