



**HAL**  
open science

## A new generation kinetic model for pyrolytic soot formation

Tullio Viola, Letícia Carneiro Piton, Alaa Hamadi, Nabiha Chaumeix, Andrea Comandini

### ► To cite this version:

Tullio Viola, Letícia Carneiro Piton, Alaa Hamadi, Nabiha Chaumeix, Andrea Comandini. A new generation kinetic model for pyrolytic soot formation. 28th International Colloquium on the Dynamics of Explosions and Reactive Systems, Jun 2022, Naples, Italy. hal-03853736

**HAL Id: hal-03853736**

**<https://hal.science/hal-03853736v1>**

Submitted on 17 Nov 2022

**HAL** is a multi-disciplinary open access archive for the deposit and dissemination of scientific research documents, whether they are published or not. The documents may come from teaching and research institutions in France or abroad, or from public or private research centers.

L'archive ouverte pluridisciplinaire **HAL**, est destinée au dépôt et à la diffusion de documents scientifiques de niveau recherche, publiés ou non, émanant des établissements d'enseignement et de recherche français ou étrangers, des laboratoires publics ou privés.

# A new generation kinetic model for pyrolytic soot formation



T. Viola, L. Carneiro Piton, A. Hamadi, N. Chaumeix, A. Comandini  
CNRS-ICARE, 1C avenue de la Recherche Scientifique 45071 Orléans Cedex 2, France

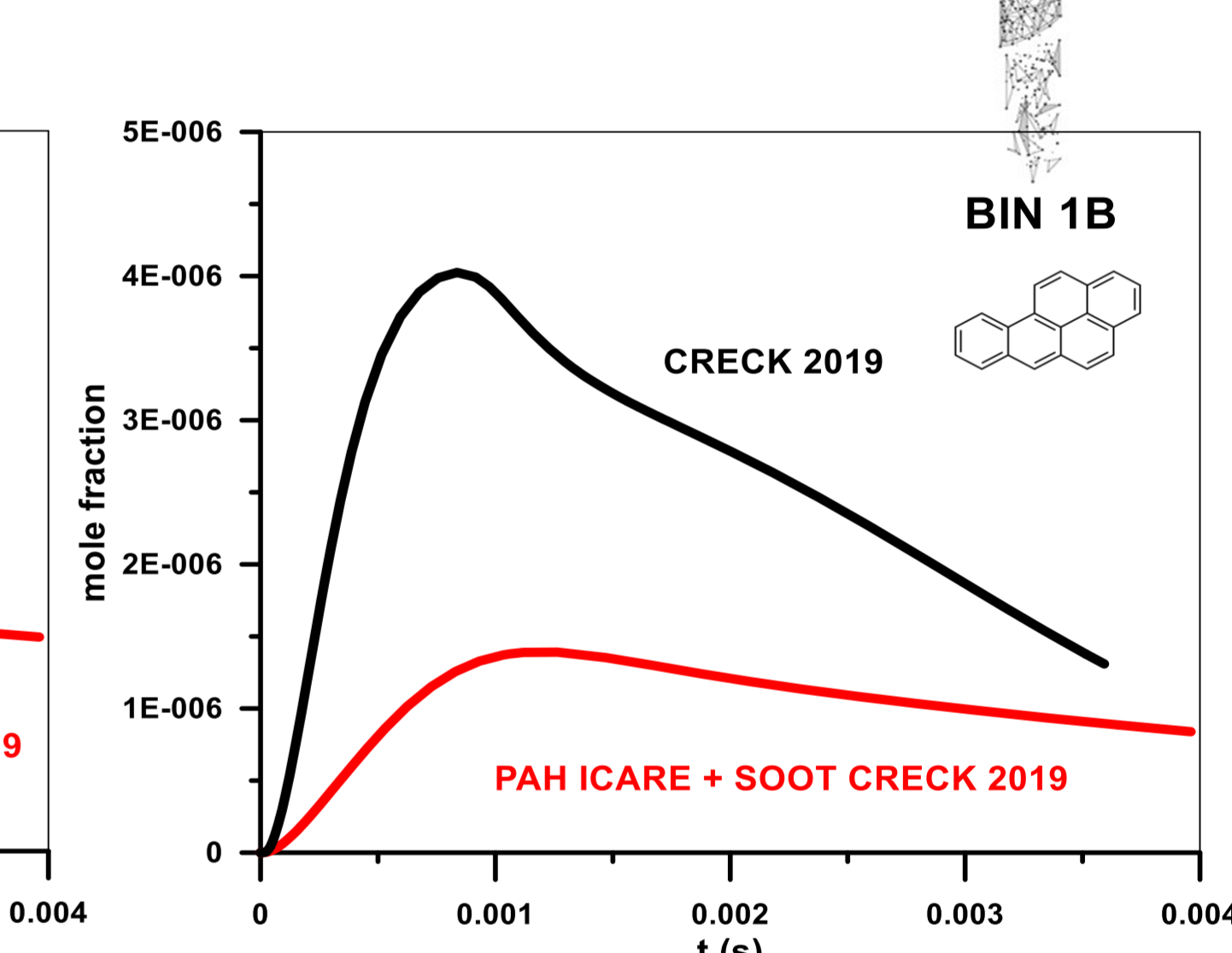
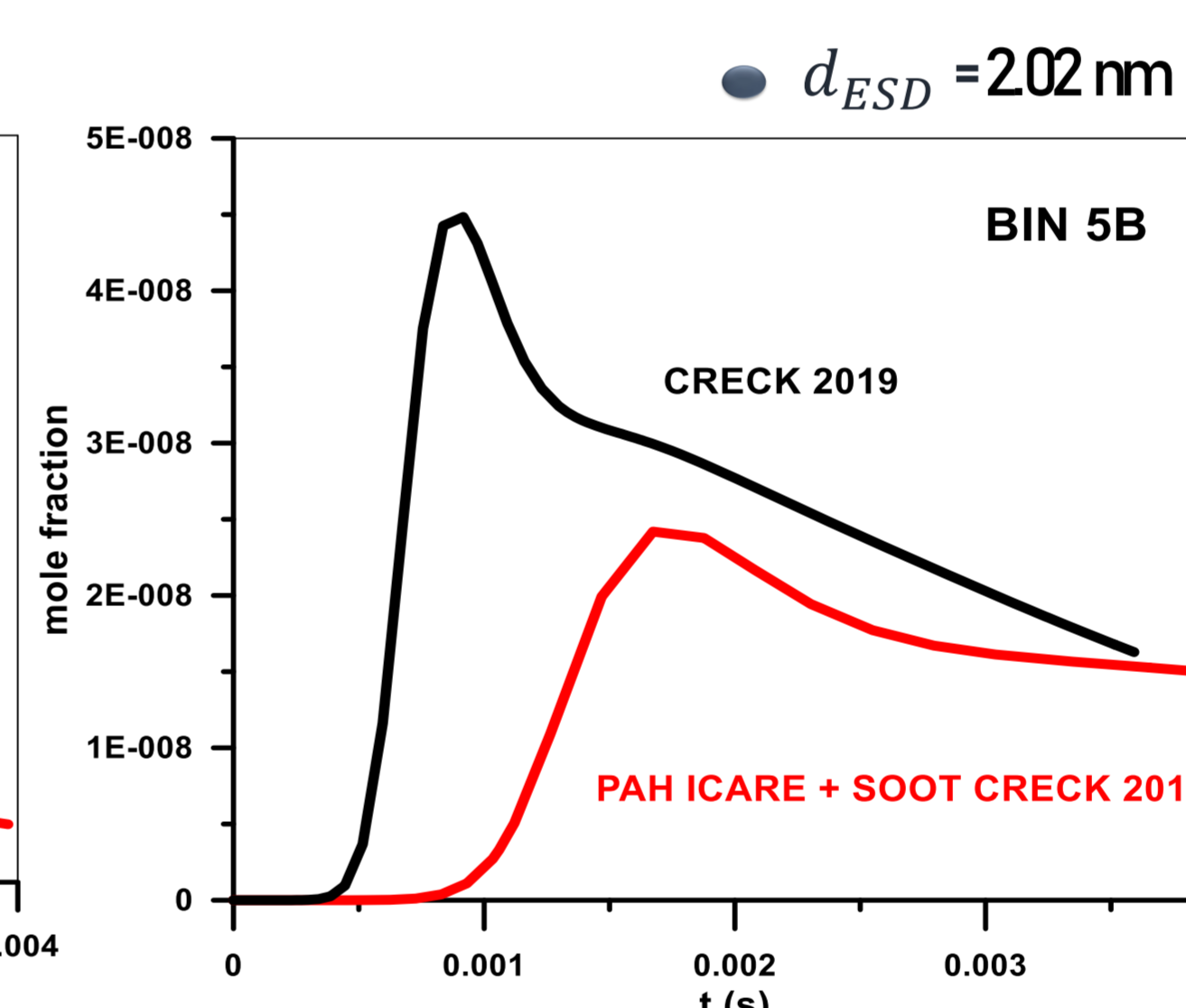
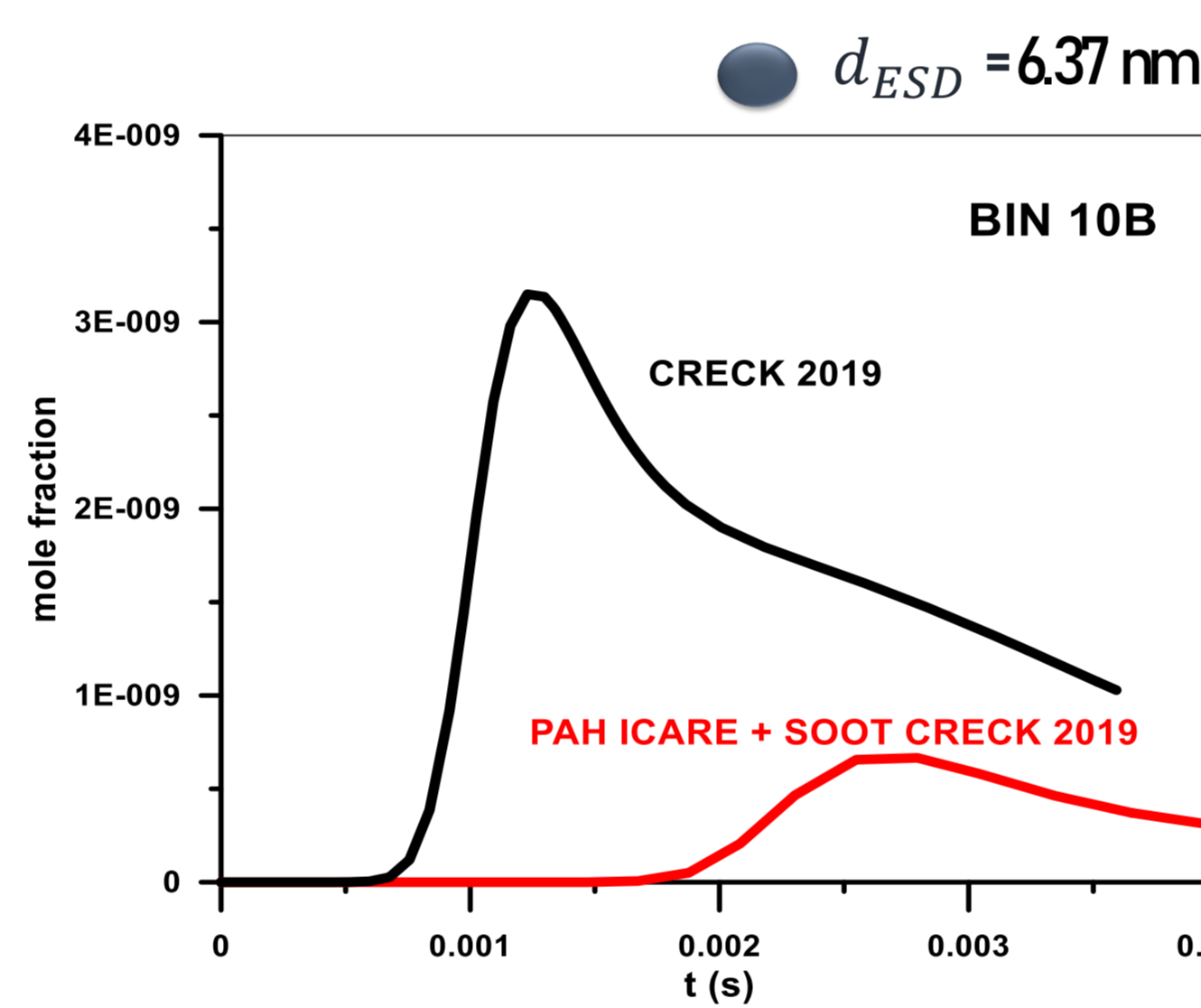
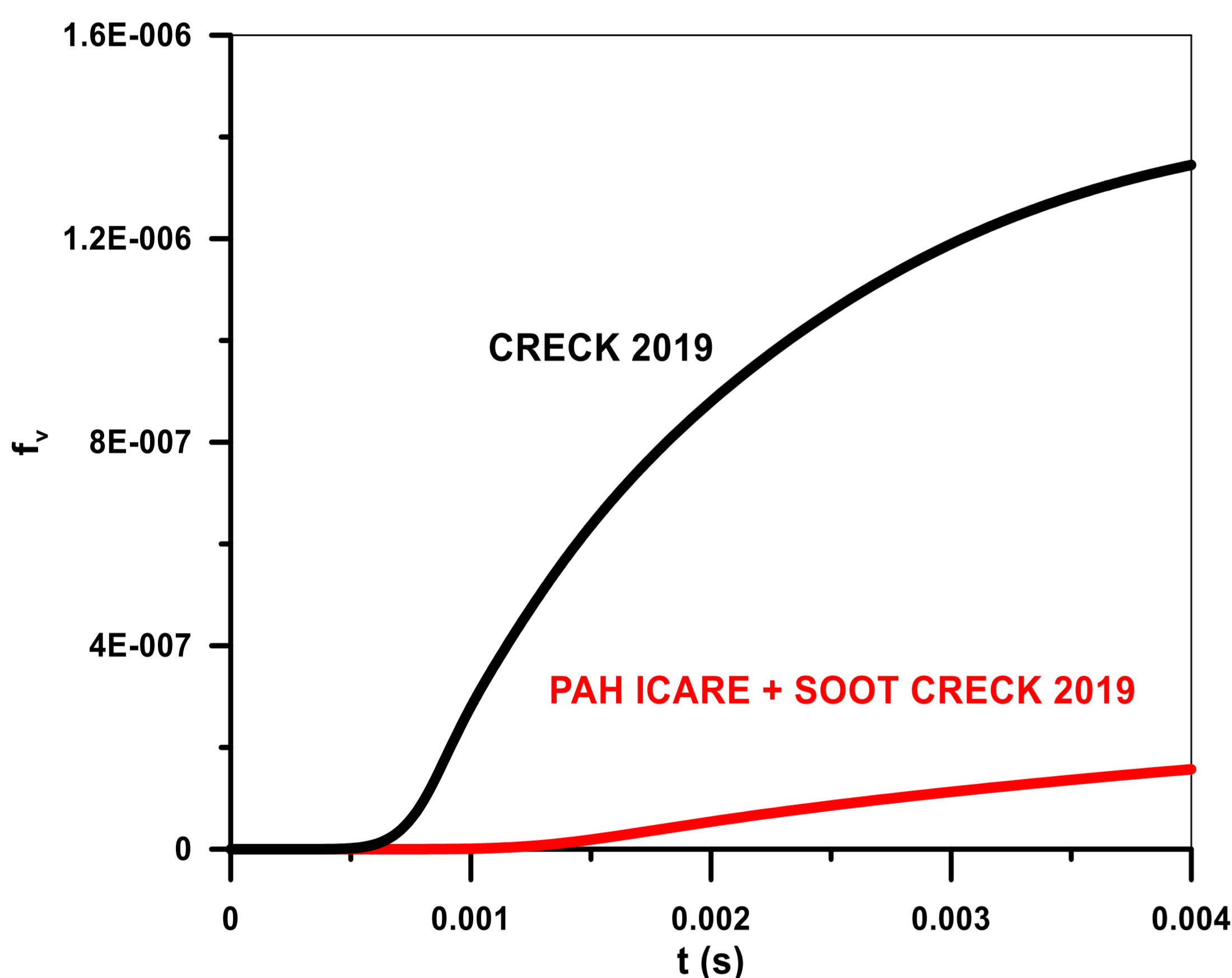
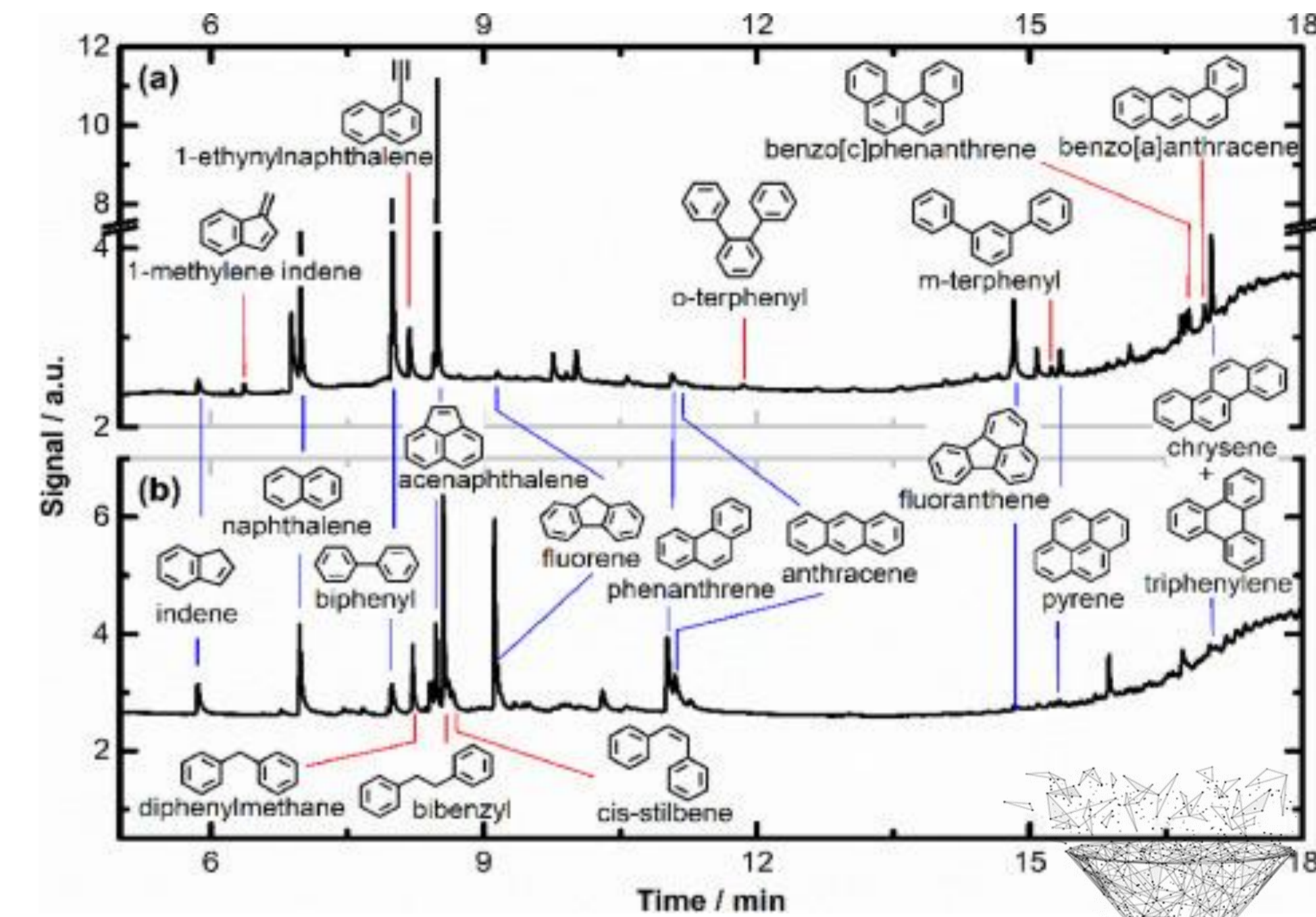
**KEYWORDS:** Soot modeling, pyrolysis, shock tube, kinetic mechanism

Despite decades of investigations, soot chemistry still represents a challenge for experimentalists and theoreticians, mainly due to the complexity of the processes involved. The goal of this work is to develop a comprehensive and semi-detailed kinetic model for soot prediction based on an up-to-date PAHs chemistry growth model developed in our serial works on the pyrolysis of a large number of fuels and fuel mixtures using single-pulse shock tube technique at ICARE. The solid-phase sub-model, generated by a Python code, will be based on the sectional method, using pseudo lumped carbon species, called BINs, able to approximate the soot particle distribution by discrete sections of C and H atoms. All the main classes of the soot chemistry will be considered: HACA, inception, growth, coalescence, dehydrogenation and aggregation. The kinetic parameters will be chosen based on reaction classes. The mechanism validation will be done against shock tube laser-based experiments.

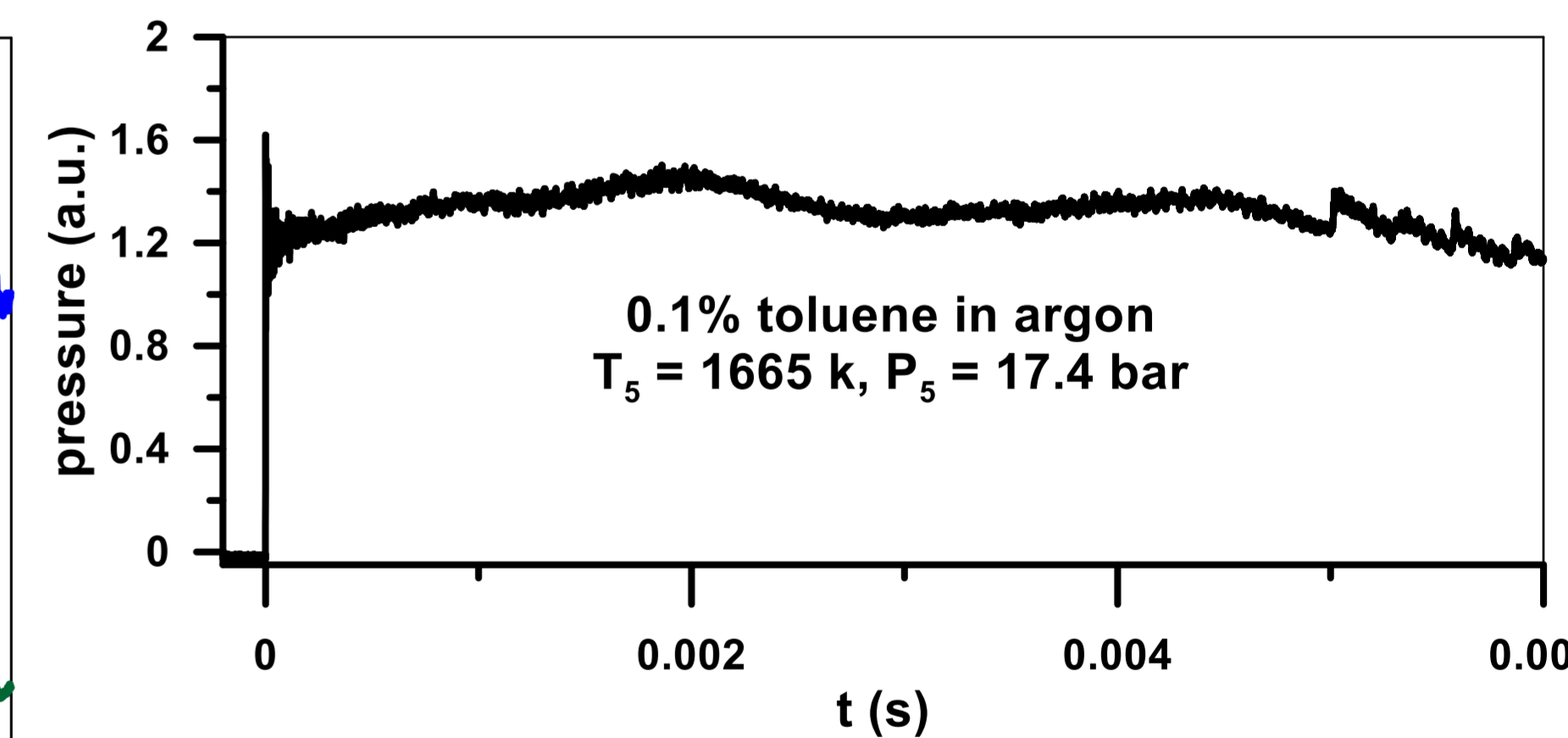
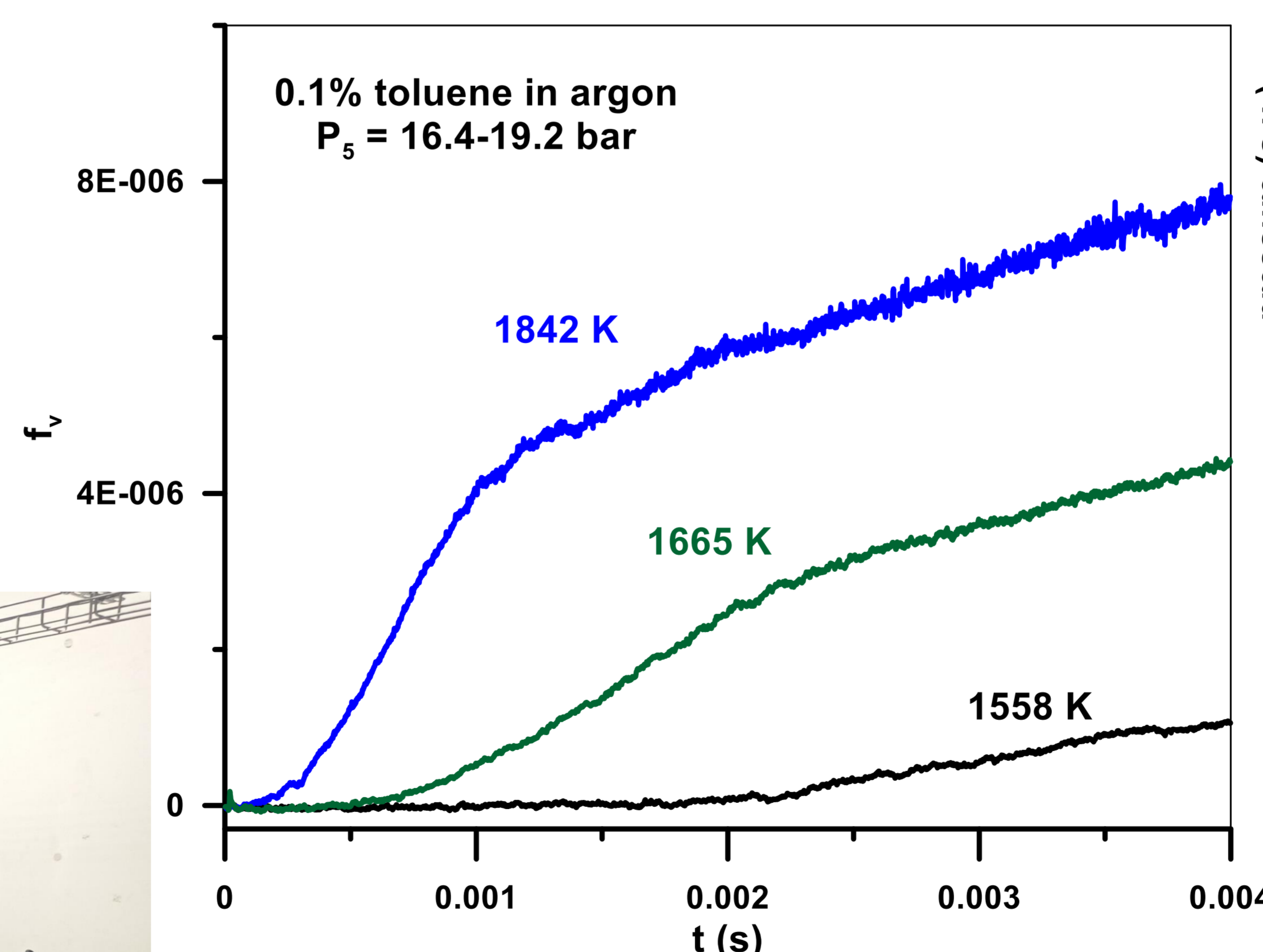
## State of the work at present

- ✓ Gas phase C1 up to C18 [1]
- ✓ Soot model based on CRECK model from Politecnico di Milano [2]
- ✓ Discrete sectional method with pseudo lumped species BINs
- ✓ Creation of the **Soot Mechanism Automated Generator SMAuG** framework in Python;
- ✓ Cantera for **tests and comparisons** -in progress

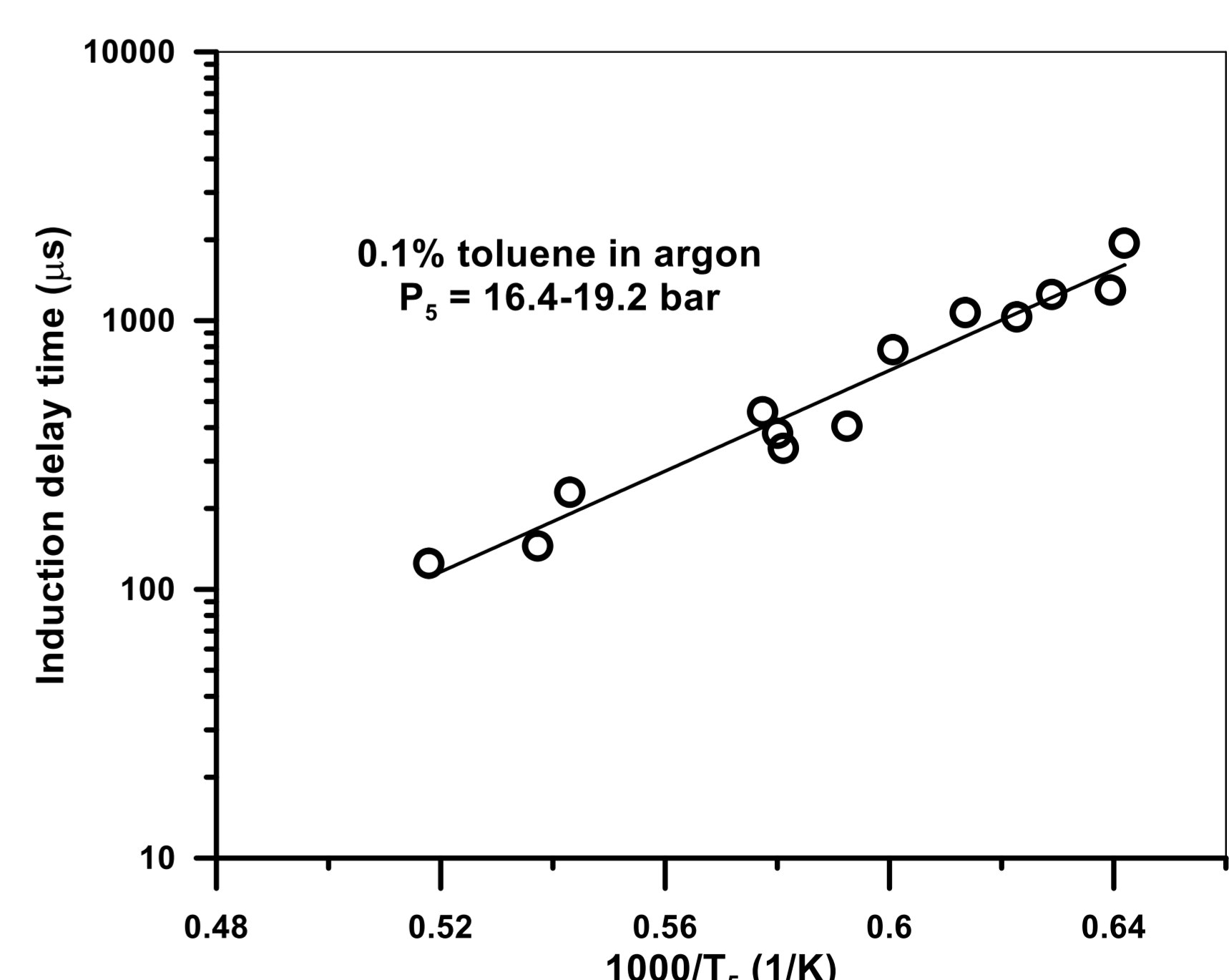
Simulation @ T=1770K, P=18 bar, C7H8 0.1% in Ar  
 $d_{ESD}$  = equivalent spherical diameter



## Detailed profiles



## Example of global parameters



$$f_v = \frac{\lambda}{6\pi l \operatorname{Im} \left( \frac{m^2 - 1}{m^2 + 1} \right)} \ln \frac{I}{I_0}$$

$m$  = complex refractive index of soot particles  
 $l$  = length crossed by the incident ray  
 $\lambda$  = wavelength of the incident ray  
 $I$  = intensity of the transmitted ray  
 $I_0$  = intensity of the incident ray  
 $\operatorname{Im} \text{value} = 0.19$

## References

- [1] Hamadi A et al. 2022, *Combustion and Flame* 237, 111858  
[2] Polimi Pejpichestakul, W et al. 2018 *Fuel*, 234, 199-206

## Acknowledgements

This project has received funding from the European Research Council (ERC) under the European Union's Horizon 2020 research and innovation programme (grant agreement No. 756785).  
Thanks to Andrea Nbbili for help and suggestions on CRECK soot;

