



HAL
open science

Mobility and land use in the Greater Khorasan Civilization: Isotopic approaches ($^{87}\text{Sr}/^{86}\text{Sr}$, $\delta^{18}\text{O}$) on human populations from southern Central Asia

Sonja Kroll, Julio Bendezu-Sarmiento, Johanna Lhuillier, Élise Luneau, Kai Kaniuth, Mike Teufer, Samariddin Mustafakulov, Mutalib Khasanov, Natalia Vinogradova, Nona Avanesova, et al.

► To cite this version:

Sonja Kroll, Julio Bendezu-Sarmiento, Johanna Lhuillier, Élise Luneau, Kai Kaniuth, et al.. Mobility and land use in the Greater Khorasan Civilization: Isotopic approaches ($^{87}\text{Sr}/^{86}\text{Sr}$, $\delta^{18}\text{O}$) on human populations from southern Central Asia. *Journal of Archaeological Science: Reports*, 2022, 46, pp.103622. 10.1016/j.jasrep.2022.103622 . hal-03850084

HAL Id: hal-03850084

<https://hal.science/hal-03850084>

Submitted on 1 Dec 2022

HAL is a multi-disciplinary open access archive for the deposit and dissemination of scientific research documents, whether they are published or not. The documents may come from teaching and research institutions in France or abroad, or from public or private research centers.

L'archive ouverte pluridisciplinaire **HAL**, est destinée au dépôt et à la diffusion de documents scientifiques de niveau recherche, publiés ou non, émanant des établissements d'enseignement et de recherche français ou étrangers, des laboratoires publics ou privés.

Mobility and land use in the Greater Khorasan Civilization: isotopic approaches ($^{87}\text{Sr}/^{86}\text{Sr}$, $\delta^{18}\text{O}$) on human populations from southern Central Asia

Sonja Kroll^{1,2}, Julio Bendezu-Sarmiento³, Johanna Lhuillier⁴, Élise Luneau⁵, Kai Kaniuth⁶, Mike Teufer⁵, Samariddin Mustafakulov⁷, Mutalib Khasanov⁸, Natalia Vinogradova⁹, Nona Avanesova¹⁰, Denis Fiorillo¹, Margareta Tengberg¹, Arash Sharifi^{11, 12}, Céline Bon³, Delphine Bosch¹³, Marjan Mashkour¹

1 Archéozoologie, Archéobotanique, Sociétés, Pratiques et Environnements (AASPE), Muséum national d'Histoire naturelle, CNRS, Paris, France

2 University of Bern, Institute for Archaeological Science, Department for Near Eastern Archaeology, Bern, Switzerland

3 Laboratoire Eco-anthropologie (UMR 7206), CNRS, Muséum National d'Histoire Naturelle, Université de Paris, Paris, France

4 CNRS, Lyon 2 University, Archéorient (UMR 5133), Maison de l'Orient et de la Méditerranée, Lyon, France

5 German Archaeological Institute, Eurasien Abteilung, Berlin, Germany

6 Ludwig-Maximilian-University, Institute for Near Eastern Archaeology, Munich, Germany

7 Afrasiab Museum Samarkand, Uzbekistan

8 National Center of Archaeology, Uzbekistan Academy of Sciences, Samarkand, Uzbekistan

9 Institute of Oriental Studies, RAS, Moscow, Russia

10 Samarkand State University, Department of Archaeology, Samarkand, Uzbekistan

11 BETA Analytic-Isobar Science, Research and Development Department, Miami, USA

12 Rosenstiel School of Marine and Atmospheric Science, University of Miami, Miami, USA

13 Géosciences Montpellier, CNRS et Université de Montpellier (UMR 5243), Montpellier, France

✉ Marjan Mashkour

marjan.mashkour@mnhn.fr

Directrice adjointe de l'UMR 7209 (AASPE)

Archéozoologie, Archéobotanique: Sociétés, Pratiques et Environnements

CNRS (Centre national de Recherche Scientifique) et MNHN (Muséum national d'Histoire naturelle)

Case postale 56

55 rue Buffon

75005 Paris - France

Abstract: The question of mobility of Bronze Age societies in southern Central Asia is a lively subject for discussion and remains a key aspect for understanding past human life. Central Asia represents a region where mobility and migration had a deep impact on the development of cultural communities. Surrounded by the great empires of the ancient Near East, it exhibited a high ethnic and genetic diversity. In this paper we present a regional study for southern Central Asia of isotopic analyses of $^{87}\text{Sr}/^{86}\text{Sr}$ and $\delta^{18}\text{O}$ of human samples from several Bronze Age sites in southern Turkmenistan (Ulug Depe), south/central Uzbekistan (Dzharkutan, Sapallitepa, Tilla Bulak, Bustan and Bashman 1) and southern Tajikistan (Saridzhar, Gelot and Darnaichi). The three geographical zones manifest different patterns of mobility. The analysis of the Ulug Depe people demonstrates a high rate of immigration during the early periods (EBA) and a tendency for permanent residence. The later periods (MBA) are marked by a decrease in immigration and mobility, indicating a more extensive use of the surrounding landscape. Dzharkutan people displayed a different and complex pattern of mobility and subsistence,

51 with frequent movements during individual lifetime within a limited area. The other sites in the
52 Surkhan Darya Valley and southern Tajikistan indicate active mobility in which individuals migrated
53 within a wide area of southern Central Asia.

54
55

56

57 **Keywords:** $^{87}\text{Sr}/^{86}\text{Sr}$ and $\delta^{18}\text{O}$ isotopes, southern Central Asia, Greater Khorasan Civilization (GKC),
58 **human mobility and land use**

59

60

61 **Authors contribution:**

62 Sonja Kroll: data curation, formal analysis, investigation, methodology, project administration,
63 conceptualization, visualization, writing – original draft, review and editing

64 Julio Bendezu-Sarmiento: excavator, provision of samples, project administration, funding
65 acquisition, conceptualization, writing – review and editing

66 Johanna Lhuillier: excavator, provision of samples, conceptualization, writing – review and editing

67 Élise Luneau: excavator, provision of samples, conceptualization, writing – review and editing

68 Kai Kaniuth: excavator, provision of samples, conceptualization, writing – review and editing

69 Mike Teufer: excavator, provision of samples

70 Samariddin Mustafakulov: excavator, provision of samples

71 Mutalib Khasanov: excavator, provision of samples

72 Natalia Vinogradova: excavator, provision of samples

73 Nona Avanesova: excavator, provision of samples

74 Denis Fiorillo: technical lab support

75 Arash Sharifi: data evaluation and map generation, writing – review and editing

76 Margareta Tengberg: supervision botany, provision of samples, conceptualization, writing – review
77 and editing

78 Céline Bon: supervision paleogenetic, conceptualization, writing – review and editing

79 Delphine Bosch: supervision geochemistry, conceptualization, writing – review and editing

80 Marjan Mashkour: overall supervision, provision of samples, project administration, funding
81 acquisition, conceptualization, writing – review and editing

82

83

84

85 **Fundings:**

86 The isotopic analyses were kindly funded by the LIA HAOMA – CNRS Project, the Nestlé Foundation
87 (Grant N° SJ866-17), the Shelby White and Leon Levy Program for Archaeological Publication, and the
88 INSU-MITI-ILIADE project. Travelling and accommodation costs of the first author were liberally funded
89 by the French Archaeological delegation in Afghanistan (DAFA).

90

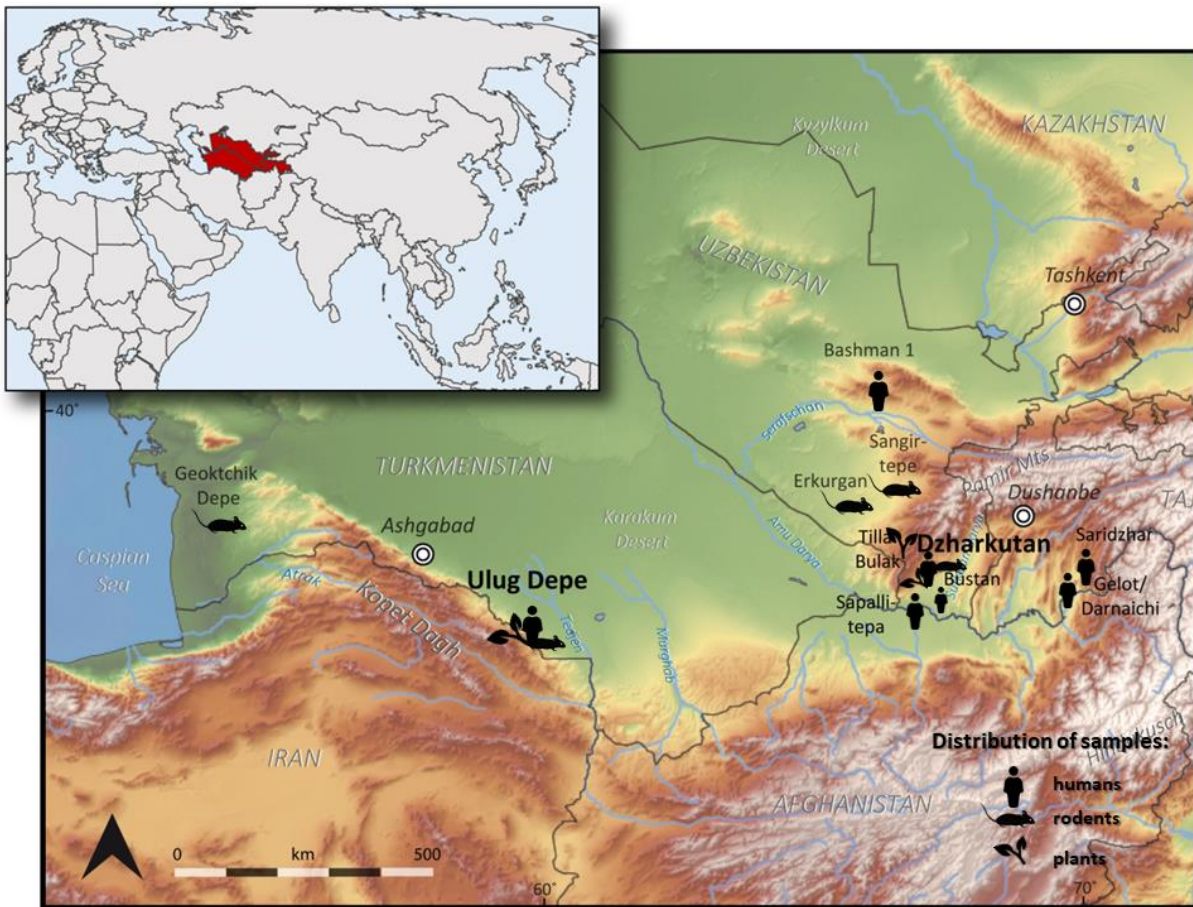
91 **1. Introduction**

92

93 During the Middle and Late Bronze Age, the emergence of complex societies is observed in southern
94 Central Asia. With the rise of the Greater Khorasan Civilization (hereafter GKC¹, ca. 2400–1500 BCE,
95 e.g., [Lyonnet, Dubova 2021](#)) major transformations led to deep cultural and economic shifts.
96 Archaeological remains evidence the establishment of intensive trade networks and long-distance
97 interactions (cf. e.g., [Hiebert 1994](#); [Possehl 2007](#); [Frachetti, Rouse 2012](#)). The location between harsh
98 deserts and high mountain ranges was a natural passage since Neolithic periods ([Thomalsky et al.](#)
99 [2013](#)), which later developed into the Silk Road (historical *Great Khorasan Road*, cf. e.g., [De la Vaissière](#)
100 [2002](#); [Wilkinson 2014](#)). Due to the prevailing climatic conditions, structural migrations such as
101 pastoralism or nomadism to access natural and economic resources, were always essential subsistence
102 strategies of the communities who settled in this region (e.g., [Mashkour 2013](#); [Spengler et al. 2014](#)).
103 Hence, the impact of migration and of changes in land use and territorial management remains a
104 matter of ongoing discussions among scientists (cf. e.g., [Biscione 1976](#); [Vinogradova, Kuz'mina 1996](#);
105 [Kohl 2007](#); [Cattani 2008](#); [Salvatori 2008](#); [Frachetti 2011, 2012](#); [Lamberg-Karlovsky 2013](#); [Luneau 2014,](#)
106 [2019](#); [Rouse, Cerasetti 2018](#)). In this context analyses of isotopes such as strontium (⁸⁷Sr/⁸⁶Sr) and
107 oxygen ($\delta^{18}\text{O}$) are today a common and powerful tool for a better understanding of interactions and
108 exchange of past populations. This study takes a first step in exploring human mobility in southern
109 Central Asia presenting isotopic analyses of a main corpus of samples from Ulug Depe in Turkmenistan
110 and Dzharkutan in Uzbekistan, both sites belonging to the first urban centers in the region during the
111 3rd and 2nd mill. BCE. The results will be compared with single samples from other Bronze Age sites,
112 such as Sapallitepa, Tilla Bulak and Bustan in southern Uzbekistan, Bashman 1 in central Uzbekistan,
113 and Saridzhar and the nearby graveyards Gelot and Darnaichi in southern Tajikistan ([fig. 1](#)). The
114 following discussion is based on the first analysis of human material from southern Central Asia. We
115 are aware that the data at our disposal cannot yet produce statistically reliable results; however, since
116 no isotopic studies on residential mobility have previously been conducted on populations in southern
117 Central Asia, this study will provide a first biogeochemical data set of ⁸⁷Sr/⁸⁶Sr isotopes and an initial
118 idea of the dynamics during the Bronze Age.

119

¹ [Biscione, Vahdati 2021](#), also called Oxus Civilization or Bactria-Margiana Archaeological Complex (BMAC) cf. e.g., [Hiebert 1994](#); [Sarianidi 2005](#); [Francfort 2009](#); [Lamberg-Karlovsky 2013](#); [Teufer 2015](#); [Salvatori 2016](#).



121

122 **Fig. 1** Topographic map of the studied region with the investigated sites including symbols of the analysed
 123 material after <https://maps-for-free.com/>
 124

125

126 2. Context

127

128 2.1. Archaeological Background

129

130 Ulug Depe and Dzharkutan delivered the major part of the human material in this study. Ulug Depe is
 131 located in southern Turkmenistan in the northern submontane plains of the Kopet Dagh Mountains,
 132 175 km south-east of the capital Ashgabat at 288 m a.s.l. (cf. e.g., [Lecomte 2007a, 2011, 2013](#);
 133 [Bendezu-Sarmiento 2013](#); [Bendezu-Sarmiento, Lhuillier 2016, 2019](#)). In ancient times, Ulug Depe was
 134 situated adjacent to the Kelet River, which traverses the Kopet Dagh in the direction of Nishapur and
 135 presents a natural pass through the mountains ([Lecomte 2013](#)). Already in the Chalcolithic period, the
 136 first social changes towards a more centralized system are evidenced. The construction of a
 137 fortification wall, as well as the separation of craft areas and the beginning of irrigated agriculture,
 138 reflects the changing nature of property and territorial management, as well as a certain social

139 differentiation ([Lecomte 2011](#)). With the appearance of the GKC, Ulug Depe had a period of particular
140 prosperity. Impressive public monuments, such as the remains of high terraces were discovered
141 ([Lecomte 2011](#); [Bendezu-Sarmiento, Lhuillier 2019](#)). Numerous finds of gold, lapis lazuli, carnelian and
142 alabaster reflect widespread connections to the Indus Valley and the Iranian Plateau ([Bendezu-](#)
143 [Sarmiento, Lhuillier 2016: 527 figs. 4–6](#)).

144 The situation in Dzharkutan is different: at the end of the 3rd mill. BCE the Sapalli culture, a
145 local variant of the GKC, arose in northern Bactria and several new settlements such as Dzharkutan,
146 Sapallitepa, Bustan, Molali, and Tilla Bulak developed in the Surkhan Darya Valley ([fig. 1](#)) ([Askarov,](#)
147 [Abdullaev 1983](#); [Shirinov 2002](#); [Huff et al. 2001](#), [Huff, Teufer 2010](#); [Bendezu-Sarmiento, Mustafakulov](#)
148 [2013](#); [Kaniuth 2021](#)). The establishment of these new settlements has been associated with an
149 increased mobility of the populations (e.g., [Frachetti 2011, 2012](#); [Bendezu-Sarmiento, Mustafakulov](#)
150 [2013](#)). The Surkhan Darya Valley is located in southern Uzbekistan, ca. 50 km north of the district
151 capital Termez, at an altitude around 350 m a.s.l. Dzharkutan with a size of about 40–50 ha is the
152 biggest site in the Shurkan Darya Valley, including several mounds with traces of occupation, a citadel
153 with a palace, a temple and large necropolises ([Shirinov 2002](#); [Huff et al. 2010](#); [Bendezu-Sarmiento,](#)
154 [Mustafakulov 2013](#)). Artifacts, mainly pottery influenced by the Andronovo Culture from the steppes
155 were discovered in Dzharkutan, reflecting dynamic interactions with the related farmer-breeder
156 culture from the Pamir foothills of southwestern Tajikistan, the so called Vakhsh culture ([Luneau et al.](#)
157 [2013, 2017](#)).

158 There is considerable uncertainty regarding the regional cohesion and territorial hegemony of
159 the GKC. In particular throughout south/western Tajikistan, researchers have documented numerous
160 instances of mixed cultural remains that include next to GKC-type materials also materials described
161 as "local" (Vakhsh) as well as related to the "steppe" (Andronovo, Federovo) (e.g., [Rouse 2020, Teufer](#)
162 [2021, Vinogradova 2021](#)). Our sampling thus includes several other sites in addition to the GKC-related
163 centres of Ulug Depe and Dzharkutan. The nearby site of Sapallitepa and the cemetery of Bustan help
164 round out the picture of GKC-related sites in southern Uzbekistan, while the cemeteries of
165 Gelot/Darnachi and the Saridzhar settlement in Tajikistan represent a complex intersection with
166 communities in the upper Yakh-Su River Valley ([Teufer 2018, et al. 2014](#)). Likewise, the samples from
167 Bashman 1 in central Uzbekistan will help establish baselines of communication between the GKC and
168 Andronovo related communities (e.g., [Luneau 2017](#)).

169
170

171 **2.2. Chronological and anthropological context**

172

173 The human material analysed in this study was collected by different archaeological expeditions during
174 the last decades and often the local possibilities as well as availability and preservation of the material
175 limited the selection. Hence, it was not possible to present a representative sample of all sexes and
176 age groups. Nevertheless, the remains of 32 human individuals from eight sites in southern Central
177 Asia were used for the present study: eleven individuals from Ulug Depe, eleven from Dzharkutan, two
178 from Sapallitepa, one from Bustan, two from Gelot/Darnaichi, three from Saridzhar and two from
179 Bashman 1 (cf. [tab. 1 and 4](#)). In Ulug Depe four burials (2 men, 1 undetermined adult, 1 child) date to
180 the Early Bronze Age (EBA, Namazga IV (NMG IV), ca. 2800–2500 BCE), two burials (1 woman, 1 child)
181 date to the transition from the Early to the Middle Bronze Age (EBA–MBA, NMG IV–V) and five burials
182 (1 man, 1 woman, 2 undetermined adults, 1 child) to the later phase of the Middle Bronze Age (MBA
183 (NMG V), ca. 2200–1900 BCE, cf. also [Bendezu-Sarmiento 2013](#)). The Ulug group consisted of three
184 men, two women, three undetermined adults and three children.

185 The eleven individuals from Dzharkutan date between 2100 and 1700 BCE, corresponding to
186 the transition from the MBA to the LBA and the LBA (NMG V–VI, NMG VI; cf. also [Bendezu-Sarmiento,](#)
187 [Mustafakulov 2013](#)). A young woman and one undetermined adult dated back to the end of the
188 3rd/beginning of the 2nd mill. BC (MBA/LBA), nine individuals (1 man, 4 women, 3 undetermined
189 adults, 1 child) dated back to the LBA, ca. 1900 and 1700 BC. In a total the group consists of five women,
190 one man, four undetermined adults and one child.

191 The two individuals from nearby Sapallitepa coincides with the earliest phase of the LBA
192 ([Askarov 1973](#)). Sapallitepa is located about 40 km southwest of Dzharkutan, close to the northern
193 bank of the Amu Darya River. The hills of Bustan are located 5 km south of Dzharkutan and dates to
194 the final phase of the Bronze Age ([Avanesova 2016](#)). The graveyards of Gelot/Darnaichi and the
195 neighboured settlement Saridzhar are located on the banks of the Yakh-Su River in southern Tajikistan
196 ([Teufer, Vinogradova 2010; Teufer 2014; Lombardo et al. 2014, Vinogradova, Kutimov 2018](#)). The two
197 burials from Gelot/Darnaichi belong to the so called Pjandzh culture and date between 2450 and 1900
198 cal. BCE ([Teufer 2018, et al. 2014](#)), while the three individuals from Saridzhar date between 1700 and
199 1500 BCE ([Teufer 2014](#)). The two individuals from Bashman 1 are culturally related to the Andronovo
200 tribes and date to ca. 1600–1400 BCE. The site is located in central Uzbekistan in the northern range
201 of the Nuratau Mountains ([Luneau personal communication](#)).²

202 The choice of human material was made mainly on the basis of the in-situ conservation of the
203 burials after excavation, since a large part of the burials were looted in the past. Teeth were removed
204 as a priority according to their maxillo-mandibular state of preservation. The lower or upper molars
205 (preferably M2 and M3) were selected if possible. The high variety of teeth used for this study makes

² Corresponding tables for chronology can be found in [Teufer 2018: 77-78](#), [Bendezu-Sarmiento, Lhuillier 2019: 99 fig. 1](#) and [Lyonnet, Dubova 2021: 8 tab.1](#).

206 inter-individual comparisons difficult as the teeth evolve in different stages of life (cf. [Knipper 2004:](#)
 207 [602 fig. 6;](#) [Hillson 2005](#)). In this study mainly molars (M3) were analysed, which represent a later stage
 208 of child- and teenager years. The human bone material consisted mainly of ribs, vertebrae and
 209 phalanges. Their remodelling rate depends on the particular bone and can vary between 5 and 30 years
 210 (cf. [Tütken 2010: 35 fig. 2](#)). Long-bones as femurs, tibias and cranium have slow remodelling rates of
 211 20 to 30 years, whereas ribs and pelvic bones have faster turnover rates of 5 to 10 years (cf. e.g.,
 212 [Knipper 2004: 610–615;](#) [Tütken 2010: 35](#)). The detailed description of the methods used for the
 213 anthropological determination of gender and age can be found in [Bendezu-Sarmiento 2013](#).

214
 215

Table 1: Simplified comparative chronology of the sites according to the analysed human remains

| <i>Period</i> | <i>approximate date cal. BCE</i> | <i>Phase</i> | <i>Kopet Dagh Mountains</i> | <i>Surkhan Darya Valley</i> | <i>Yakh-Su Valley</i> | <i>Nuratau Range</i> |
|--------------------------|----------------------------------|--------------|-----------------------------|--|----------------------------------|----------------------|
| Late Bronze Age | 2000-1600 | NMG VI | Ulug Depe | Bustan Sapallitepa Tilla Bulak Dzharkutan | Saridzhar Gelot/ Darnaichi | Bashman 1 |
| | | | Ulug Depe | Dzharkutan | Gelot/ Darnaichi | |
| Middle Bronze Age | 2400-2000 | NMG V | Ulug Depe | | | |
| Early Bronze Age | 2800-2400 | NMG IV | Ulug Depe | | | |

216
 217

218

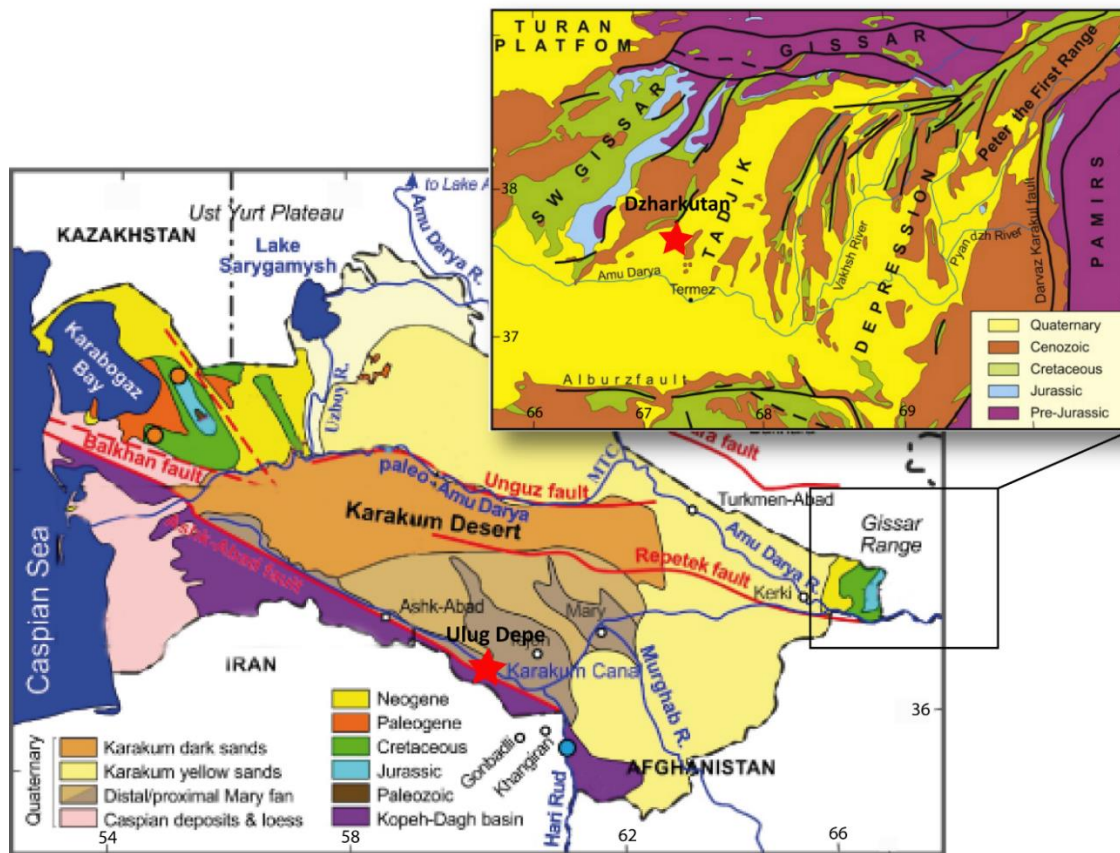
219 **2.3. Ecological and geo-chemical realities**

220

221 One of the main issues of the present study was the description of the distribution of $^{87}\text{Sr}/^{86}\text{Sr}$ isotopes
 222 in southern Central Asia. The general concept of mobility studies is based on the comparison of the
 223 biogenic signature of an individual with the so called isandscape (cf. [Evans et al. 2010,](#) [Bowen 2012,](#)
 224 [Maurer et al. 2012](#)). Isolandscapes record the spatial distribution of the local isotopic composition of
 225 environmentally bioavailable $^{87}\text{Sr}/^{86}\text{Sr}$.

226 All the sites analysed here are located along the northern foothills of Kopet Dagh Mountains,
 227 the eastern foothills of Kugitang Mountains and the southern foothills of the Khodzhasartes Mountains
 228 ([fig. 2](#)). The Kopet Dagh submontane region is formed from alluvial fan deposits and younger
 229 Quaternary loess deposits ([Fet, Atamuradov 1994;](#) [Atamuradov et al. 1999](#)). The Surkhan Darya Valley
 230 is covered by layers of clayish and sandy loess, underneath a thick layer of continental deposits mainly
 231 consists of sedimentary rocks (sandstone and aleurolite) with sporadic volcanic outcrops ([Mukin 1997;](#)
 232 [Kaniuth 2021](#)). Also, the Yakh-Su River Valley is covered by deep loess deposits, which are up to 200 m
 233 thick ([Teufer 2014](#)). The geological formation of Turkmenian cretaceous rocks and carbonates in the

234 Amu Darya Basin provided $^{87}\text{Sr}/^{86}\text{Sr}$ ratios between 0.7078 and 0.7084 (Meisel et al. 1995; Zheng et al.
 235 2011), while Caspian Sea deposits resulted in $^{87}\text{Sr}/^{86}\text{Sr}$ ranges around 0.7081 (Clauer et al. 2000).



236
 237 **Fig. 2:** Geological maps of southern Central Asia after Ghassemi et al. 2019: 127 fig. 2 (Turkmenistan) and Sanchez
 238 de Corral, Thum 2012: 92 fig. 3 (Uzbekistan, Tajikistan)
 239

240 The climate in Ulug Depe is similar to that of the Karakum Desert, a forbidding environment,
 241 tempered through the influence of the Kopet Dagh Mountains (Tengberg 2013). The average annual
 242 temperature is 16°C, with a maximum of 48°C and a minimum of -26°C; the annual precipitation is
 243 around 220 mm, permitting the cultivation of cereals, grapes, vegetables and fruits without irrigation.
 244 The Central Karakum lies directly northward of the Kopet Dagh submontane plains. Characteristic
 245 vegetation types are open steppes dominated by shrub species in the piedmont region and open scrub
 246 woodlands followed by juniper forests in the Kopet Dagh Mountains (Fet, Atamuradov 1994, 1999;
 247 Moore et al. 1994; Miller 1999, 2003; Tengberg 2013). The climate in Dzharkutan is characterized by
 248 seasonal rainfalls in winter and early spring resulting in an early and short growing season. From May
 249 to October the climate is dry and hot. Average annual precipitation is 200–240 mm; the mean annual
 250 temperature is +16.8°C. Wide areas are covered by a xeric savanna ecosystem, dominated by wild
 251 pistachio trees (Mukin 1997). The hot and arid climate results in rather high $\delta^{18}\text{O}$ averages of modern
 252 precipitation around -5.1‰ (VSMOW) in Ulug Depe and -4.2‰ (VSMOW) in Dzharkutan (after the

253 OIPC, www.waterisotopes.org). Analyses of Callovian carbonates from the Caspian Sea resulted in
254 $\delta^{18}\text{O}$ ranges between 0‰ and -5.5‰ (VPDB, after [Zheng et al. 2011](#)).

255
256

257 **3. Material and Methods**

258

259 **3.1. Isotopic applications and their problems**

260

261 Isotope analysis is a reliable method for tracking human and animal origins and mobility at a lifetime
262 scale (cf. e.g., [Price et al. 2002, 2004](#); [Tütken 2003](#); [Knipper 2004](#); [Ventresca Miller, Makarewicz 2018](#)).
263 The ratio of strontium $^{87}\text{Sr}/^{86}\text{Sr}$ depends on water sources and the geological formation with which the
264 water has interacted. Strontium is dissolved out of rocks by the groundwater, permeating through
265 rivers and other water sources into soils and plants. It enters the body through drinking and eating and
266 is incorporated without substantial fractionation into the hydroxyapatite of hard tissues like bones and
267 teeth, often referred to as biogenic strontium (e.g., [Tütken 2003](#); [Bentley 2006](#)). The water and food
268 ingested by an organism is thus directly connected to the nature of the geological substrates ([Faure
269 1986](#); [Faure, Mensing 2005](#)). Moreover, tooth enamel is synthesized during childhood and remains
270 static. Therefore, the isotopic ratio of tooth enamel reflects the environment in which the organism
271 evolved during the first years of its life. Bones undergo continuous modification during the whole life
272 and isotopes reflect the situation of the last years before death. Differences between bones and teeth,
273 therefore, provide evidence for changes and the mobility of humans and animals during their lifetime
274 ([Price et al. 2002](#); [Bentley 2006](#); [Burton, Price 2013](#)).

275 The ratio of oxygen $^{18}\text{O}/^{16}\text{O}$ ($\delta^{18}\text{O}$) in mammals reflects the sources of incorporated water, such
276 as drinking water and the water in edible plants (e.g., [Balasse et al. 2002, 2009](#)). The values reflect the
277 composition of local meteoric water, derived from precipitation as rain, snow, or atmospheric
278 moisture. The oxygen composition varies with different factors such as humidity, temperature, rain
279 shadow effects, altitude, latitude and distance from the sea ([Longinelli 1984](#); [White et al. 1998, 2004](#)).
280 It can be evidence of local water sources and climate conditions in which an individual grew up and is,
281 therefore, another indicator for the origins and movements of humans and animals ([Budd et al. 2004](#);
282 [Millard et al. 2004](#); [White et al. 2004](#); [Bentley, Knipper 2005](#)). The oxygen signal of an individual is not
283 only impacted by the surrounding habitat but also by several physiological factors, such as individual
284 metabolism and water intake, body temperature, or heat loss mechanisms ([Makarewicz, Pederzani
285 2017](#), [Ventresca Miller 2018](#)). Moreover, culturally related manners as the intake of brewed,
286 fermented, or cooked beverages can affect the $\delta^{18}\text{O}$ ratios ([Brettell et al. 2012](#); [Royer et al. 2017](#)), as
287 well as weaning can have an impact on the $\delta^{18}\text{O}$ ratio in body tissues ([White et al. 2004](#)). Additionally,

288 seasonal variations have to be taken into account. The mineralization of body tissues generally covers
289 a period of several years and might be impacted by seasonal changes through time. Central Asia is
290 dominated by a dry, hot and arid vegetation, groundwater sources like springs, wells, rivers, or lakes
291 may have been seasonal and differ over time. Furthermore, many regions in the world as e.g., tropical
292 zones have similar $\delta^{18}\text{O}$ values, ranging from approximately -2.0 to -8.0 (VSMOW), so that a distinction
293 of these regions is difficult (Bowen et al. 2005, Sjögren, Price 2012). Therefore, $\delta^{18}\text{O}$ results will be
294 taken only for the interpretation of inter-individual variations.

295 Diagenesis can have a critical impact on the isotopic composition of human remains. Bones,
296 but especially tooth dentine are very sensible to diagenesis – the ability of isotopes to penetrate from
297 the surrounding milieu into the material. Decay processes as well as bone density, temperature and
298 humidity/aridity can strongly modify the original isotopic composition (e.g., Behrensmeyer 1978; Budd
299 et al. 2000; Denys 2002; Hedges 2002; Hoppe et al. 2003; Tütken 2003, 2010; Maurer et al. 2012).
300 Depending on the conservation of the material, diagenetic effects, especially of recent, well-preserved
301 material, can be more or less completely eliminated by careful mechanical ablation of the topmost
302 layers of the bone compacta followed by a specific leaching treatment with NaOCl and NaOH or acetic
303 acid solutions (Hedges 2002: 322; Hoppe et al. 2003: 25–26; Tütken 2003: 217). Carbonized plant
304 remains also strongly undergo diagenetic changes. Although exogenous strontium does not replace all
305 biogenic strontium and is removable through leaching with strong acid (Fiorentino et al. 2014; Styling
306 et al. 2019), potential diagenetic alterations always have to be taken into account when interpreting
307 isotopic data. The strong homogeneity of $^{87}\text{Sr}/^{86}\text{Sr}$ results of Ulug Depe bones attracts attention, as all
308 of them fall within a very narrow strontium range. It may be feared that these results are caused by
309 contamination through diagenetic processes. Although the assessment of the diagenetic effect on the
310 $^{87}\text{Sr}/^{86}\text{Sr}$ ratios through measuring the concentration of the elements was not performed on the
311 samples, Ulug Depe bones were in very good conditions and leaching with strong acid should have
312 removed the diagenetic impact for isotopic measurements. Moreover, both chemical extractions and
313 measurements were conducted in multiple sessions over a period of two years with each session
314 incorporating samples of different material, species and origins. Therefore, systematic mistakes within
315 the analytical process can be excluded and the results will be considered as reliable.

316

317

318 **3.2. Reference material**

319

320 For the determination of the bioavailable local $^{87}\text{Sr}/^{86}\text{Sr}$ ranges in this study material of nine rodents
321 (*Mus spec.*), two carnivores (*Canis familiaris*, *Panthera spec.*), eleven samples of barley (*Hordeum*
322 *vulgare*), three samples of wheat (*Triticum aestivum*), two tamarisks (*Tamaris spec.*), one juniper

323 (*Juniperus spec.*) and one willow (*Salix spec.*) were analysed (cf. [tab. 2](#) and [Mashkour 2013; Tengberg](#)
324 [2013, et al. 2020](#)). Rodents, such as mice, have a natural lifespan of around 2–3 years and form
325 territorial family clans. Hence, their bone compositions can be considered as representative of the
326 surrounding environment and deliver reliable information about the bioavailable strontium (e.g.,
327 [Knipper 2004; Bentley et al. 2004](#)). When only human material was available as it was the case in
328 [Bashman 1](#), tooth dentine was analysed. Primary dentine is particularly susceptible to diagenetic
329 alterations and represents the bioavailable strontium of the environment rather than the biogenic
330 signal of the individual (cf. e.g., [Gerling 2015](#)). Plants were used in form of carbonized grains and
331 charred wood from Bronze and Iron Age layers ([Tengberg 2013, et al. 2020](#)). In general, all reference
332 samples were collected during the excavations, and we avoided using modern material because of
333 possible complications with the influence of fertilizers or imported animal feed ([Böhlke, Horan 2000;](#)
334 [Bentley, Knipper 2005; Maurer et al. 2012](#)).

335

336

337 **3.3. Applied laboratory methods**

338

339 Analyses were conducted on bone compacta, tooth enamel and primary tooth dentine. All steps were
340 performed in a sterile atmosphere, tools were cleaned with ethanol and in the ultrasonic bath. Bones
341 were cleaned of dirt with a toothbrush and a diamond drill. The sampling was proceeded with a micro
342 saw followed by careful crushing with an agate mortar and pestle. Teeth were cleaned with a
343 toothbrush and a diamond drill, enamel and dentine sampling was undertaken with a diamond drill.
344 Charred plants were mechanically cleaned of sand and dust with a needle and tweezers under the
345 microscope. After crushing and the treatment with 6 M HCl for 24 hours after [Styring et al. \(2019\)](#), the
346 samples were transformed into ash in a ceramic beaker at 750°C for 12 hours. The residues were solved
347 in 1 ml 13 M HNO₃ in the Ultrasonic bath followed by the evaporation of the acid solution on a hot
348 plate (100°C) overnight.

349 The extraction of strontium was performed with 10–15 mg tooth enamel and 20–25 mg bone
350 compacta/tooth dentine. The leaching procedure to remove the diagenetic strontium was undertaken
351 with 7% acetic acid in an ultrasonic bath (45°C) for 30 minutes followed by several rinsing steps with
352 ultrapure H₂O Milli-Q®, changing the solution every 10 minutes until it became clear (only enamel and
353 bones were leached, dentine was only rinsed in water). The samples were dried overnight. The
354 cleaned, leached and oven dried samples were transferred to a clean Teflon beaker and dissolved in 1
355 ml 13 M HNO₃ in the Ultrasonic bath at 65°C. Acid was evaporated on a hot plate at 100°C and samples
356 were dissolved in 2 ml 2 M HNO₃. Strontium was extracted through a Teflon column using “Sr-Eichrom”
357 resin ([Pin et al. 1994](#)) after the following protocol: columns were washed 6 times alternately with 5 ml

358 6 M HCl and 0.05 M HNO₃ followed by the conditioning step with 3 ml 2 M HNO₃. After uploading the
359 samples, the elimination of other elements was performed with 2 ml 2 M HNO₃, 3 ml 7 M HNO₃ and
360 0.5 ml 3 M HNO₃. The extraction of strontium was accomplished with 4 ml 0.05 M HNO₃. The lab work
361 of the strontium extraction was carried out in the clean isotope laboratory of the Geoscience
362 Montpellier (CNRS – University of Montpellier). The measurements were realized using a Thermo
363 Scientific MC-ICP-MS (MultiCollector-Inductively Coupled Plasma Mass Spectrometer) Neptune Plus at
364 the AETE-ISO Platform from the OSU-OREME (Montpellier). To assess the reproducibility and accuracy
365 of the isotopic ratios, standards were repeatedly run every five samples. All ratios were normalized
366 using a value of 0.1194 for the ⁸⁸Sr/⁸⁶Sr ratio. The standard average values were 0.710243 ± 6 (±2σ, n
367 = 20) for the NBS987 Sr standard.

368 For the preparation of structural carbonate for the oxygen analyses, because of the state of
369 preservation varying amounts of mechanically cleaned bone compacta were required: Ulug bones 10–
370 15 mg; Dzharkutan, Gelot/Darnaichi, Saridzhar, and Bashman1 bones 20–30 mg. The required amount
371 of tooth enamel was 5–10 mg. The purification was performed following the protocol of Balasse et al.
372 (2002). To remove the diagenetic carbonate, bone samples were treated with NaOCl (2–3%) for 24–48
373 hours at room temperature, stirred every 4–6 hours. After rinsing (4–5 times with H₂O Milli-Q®), 1 M
374 acetic acid was added to the bone powder for 1 hour at room temperature, stirred every 20 minutes.
375 Teeth enamel samples were treated with 1 M HCl for 4 hours, stirred every 30 minutes. After rinsing
376 (4–5 times with H₂O Milli-Q®), all samples were dried at 50–70°C for 24–36 hours until all water was
377 thoroughly evaporated. The lab work was carried out in the Cosmochemistry Lab of the Mass
378 Spectrometry Service at the National Museum of Natural History (SSMIM) in Paris. The analyses were
379 performed using a Thermo Scientific Mass-spectrometer DeltaV-Advantage with a Kiel IV automated
380 processor. Oxygen ratios are reported compared to the Vienna Pee Dee Belemnite standard (VPDB)
381 using δ notation. Uncertainties (1σ) for δ¹⁸O were 0.06‰, the measurements are expressed relative to
382 the standard in parts per thousand (‰).

383

384

385 **4. Results**

386

387 **4.1. Determination of the local ⁸⁷Sr/⁸⁶Sr ranges**

388

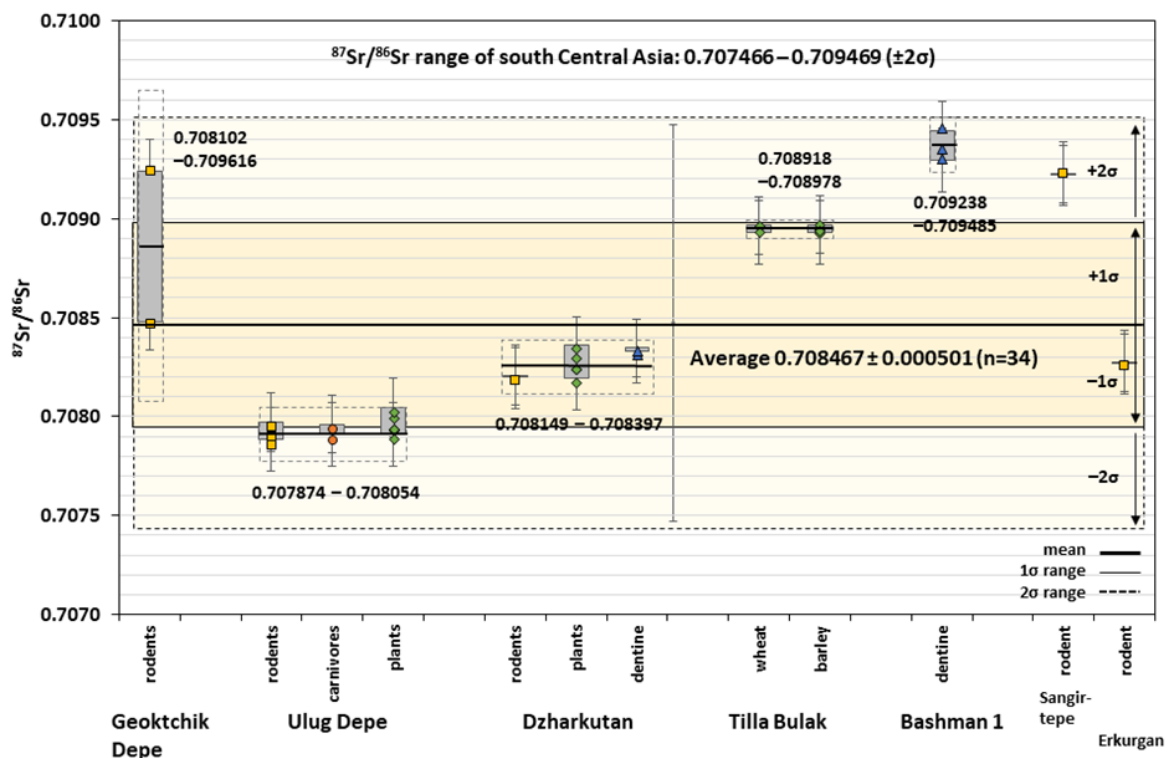
389 Several methods exist for the calculation of local ⁸⁷Sr/⁸⁶Sr signals to get the most reliable results (e.g.,
390 Grupe et al. 1997; Price et al. 2002, 2004; Bentley et al. 2004; Knipper 2004). In order to compare our
391 results with already published data, we followed Price et al. (2002) by expanding the mean value with

392 2σ. The itemized results of the faunal and botanical references, including the calculated local $^{87}\text{Sr}/^{86}\text{Sr}$
 393 ranges, are listed in table 2; the two human dentine results can be found in table 3; all $^{87}\text{Sr}/^{86}\text{Sr}$ ranges
 394 are shown in fig. 3.

395 The bio-available local $^{87}\text{Sr}/^{86}\text{Sr}$ range of Ulug Depe was determined using three samples of
 396 rodents and two of carnivores (Mashkour 2013), supplemented by four samples of barley, supposed
 397 to be grown locally, one sample of juniper wood, a mountainous species, and one sample of tamarisk,
 398 with a high variety of adaptation, but in this region mainly growing along rivers and in the plain
 399 (Tengberg et al. 2020). The ratios ranged between 0.707885 and 0.708045 with an average of 0.707964
 400 (± 0.000045), resulting in a local $^{87}\text{Sr}/^{86}\text{Sr}$ range for Ulug Depe of **0.707874 – 0.708054** ($\pm 2\sigma$, n = 11).

401 For the bio-available local $^{87}\text{Sr}/^{86}\text{Sr}$ range of Dzharkutan, two samples of rodents, five botanical
 402 samples and two human dentine samples were analysed (Mashkour et al. 2016; Tengberg 2013;
 403 Tengberg et al. 2020). The plants were three samples of barley, most probably locally grown; one
 404 sample of willow, riverine and probably also locally grown; and one sample of tamarisk. The ratios
 405 ranged between 0.708191 and 0.708356 with an average of 0.708273 (± 0.000062), resulting in a local
 406 $^{87}\text{Sr}/^{86}\text{Sr}$ range for Dzharkutan of **0.708149 – 0.708397** ($\pm 2\sigma$, n = 9).

407



408
 409 **Fig. 3:** $^{87}\text{Sr}/^{86}\text{Sr}$ signals from southern Central Asia; sites are in geographical order from west to east. Dashed
 410 boxes mark the determined local $^{87}\text{Sr}/^{86}\text{Sr}$ signals; the yellow box marks the calculated regional range (dark $\pm 1\sigma$,
 411 light $\pm 2\sigma$).
 412

413 To get a better idea of the surrounding situations, further faunal samples were added from
 414 Tilla Bulak, a small village 25 km west of Dzharkutan, dating around 2000–1750 BCE (Kaniuth 2016).

415 Seven samples of barley and wheat were analysed (Peters in Kaniuth 2009, 89–91): the ratios ranged
416 between 0.708930 and 0.708968 with an average of 0.708948 (± 0.000015), resulting in a narrow, but
417 significantly different local $^{87}\text{Sr}/^{86}\text{Sr}$ range of **0.708918 – 0.708978** ($\pm 2\sigma$, $n = 7$).

418 The two human individuals from Bashman 1 were tested for their dentine $^{87}\text{Sr}/^{86}\text{Sr}$ ratios. The
419 results were close to each other (0.709297 and 0.709343), giving an impression of the strontium
420 distribution in this region. The enamel ratio of the child was also close to the two dentine ratios; as it
421 was a young child (below 7 years) and the analysed tooth a molar (formation not finished within this
422 age), the child was added to the calculation to get the widest possible description of local strontium
423 distribution. Then, the ratios ranged between 0.709297 and 0.709445 with an average of 0.709362 (\pm
424 0.000062), resulting in a local $^{87}\text{Sr}/^{86}\text{Sr}$ signal of **0.709238 – 0.709485** ($\pm 2\sigma$, $n = 3$).

425 Several analyses of rodents were included as further references: these do not provide reliable
426 local $^{87}\text{Sr}/^{86}\text{Sr}$ signals, but serve as indicators for the isotopic distribution of the archaeological sites.
427 Hence, the bone material of one rodent from Sangir-tepe, of one from Erkurgan (Mashkour et al. 2016)
428 and of two from Geoktchik Depe (Mashkour 1998) were analysed. Geoktchik Depe is located in the
429 Dehistan Plain, in southwestern Turkmenistan, adjacent to the Caspian Sea, which is today an arid and
430 flat region (Lecomte 2005, 2007b). The two rodents from Geoktchik Depe showed completely different
431 $^{87}\text{Sr}/^{86}\text{Sr}$ ratios, resulting in a wide range of **0.708102 – 0.709616** ($\pm 2\sigma$, $n = 2$). The rodent from Sangir-
432 tepe displayed a similar $^{87}\text{Sr}/^{86}\text{Sr}$ ratio of 0.709224 (± 0.000006), while that from Erkurgan a ratio of
433 0.708273 (± 0.000003) closer to those from Ulug Depe and Dzharkutan.

434

435 **Table 2** $^{87}\text{Sr}/^{86}\text{Sr}$ results of botanical and faunal references and calculation of the local signals

436

437

| Site | Species | Name of sample | #Ref | Period | Material | $^{87}\text{Sr}/^{86}\text{Sr} \pm 2\sigma$ (last digits) | Mean $\pm 1\sigma$ | Local $^{87}\text{Sr}/^{86}\text{Sr}$ range $\pm 2\sigma$ | Mean $\pm 1\sigma$ (n=34) | Local $^{87}\text{Sr}/^{86}\text{Sr}$ range $\pm 2\sigma$ (± 0.001) |
|----------------|-----------------|----------------|----------------------|---------|---------------|--|-------------------------|--|---------------------------|--|
| Ulug Depe | Mus spec. | R-CH. 1 | Chantier 1 | MBA | bone fragm. | 0.707922 ± 06 | 0.707954 ± 0.000045 | 0.707874 - 0.708054 | | |
| | Mus spec. | R-CH. 5 | Chantier 5 | MBA | bone fragm. | 0.707885 ± 04 | | | | |
| | Mus spec. | R-CH. 16 | Chantier 16 | MIA | bone fragm. | 0.707972 ± 07 | | | | |
| | Canis fam. | SK16-18 | Chantier 1; 2007 | EBA/MBA | bone fragm. | 0.707908 ± 05 | | | | |
| | Panthera spec. | SK16-25 | Chantier 5; 2004 | | bone fragm. | 0.707961 ± 03 | | | | |
| | Tamaris spec. | SK18-01 | Chantier 1 Est | MBA | charred wood | 0.708016 ± 04 | | | | |
| | Juniperus spec. | SK18-02 | Chantier 8, US 8350 | MIA | charred wood | 0.708045 ± 03 | | | | |
| | Hordeum vulg. | SK18-03-1 | Chantier 5, US 5012 | EBA | charred seeds | 0.707955 ± 05 | | | | |
| | Hordeum vulg. | SK18-03-2 | Chantier 5, US 5012 | EBA | charred seeds | 0.70796 ± 05 | | | | |
| | Hordeum vulg. | SK18-04 | Chantier 1 Est | MBA | charred seeds | 0.707963 ± 06 | | | | |
| Dzharkutan | Hordeum vulg. | SK18-05 | Chantier 8, US 8305 | MIA | charred seeds | 0.707911 ± 05 | 0.708273 ± 0.000062 | 0.708149 - 0.708397 | 0.708467 ± 0.000501 | 0.707466 - 0.709469 (0.707467 - 0.709467) |
| | Mus spec. | R-DZH 1066 | Sep. 1066 | LBA | bone fragm. | 0.708201 ± 05 | | | | |
| | Mus spec. | R-DZH 2012 | Excavation 2012 | LBA | bone fragm. | 0.708204 ± 03 | | | | |
| | Tamaris spec. | SK18-86 | Chantier 7, US 7018 | EIA | charred wood | 0.708312 ± 09 | | | | |
| | Salix spec. | SK18-07 | Chantier 7, US 7034 | LBA | charred wood | 0.708191 ± 04 | | | | |
| | Hordeum vulg. | SK18-09-1 | Chantier 7, US 7034 | LBA | charred seeds | 0.708258 ± 06 | | | | |
| | Hordeum vulg. | SK18-09-2 | Chantier 7, US 7034 | LBA | charred seeds | 0.708359 ± 06 | | | | |
| | Hordeum vulg. | SK18-10 | Chantier 7, US 7018 | EIA | charred seeds | 0.708259 ± 07 | | | | |
| | Homo sap. | DZH 1049 | DZH-2011 Sep1049 | LBA | tooth dentine | 0.708330 ± 05 | | | | |
| | Homo sap. | DZH 1051 | DZH-2011 Sep1051 | LBA | tooth dentine | 0.708346 ± 05 | | | | |
| Tilla Bulak | Triticum aest. | SK18-76 | TB10-KF-541 | LBA | charred seeds | 0.708965 ± 03 | 0.708948 ± 0.000015 | 0.708918 - 0.708978 | | |
| | Triticum aest. | SK18-77 | TB10-KF-701 | LBA | charred seeds | 0.708931 ± 13 | | | | |
| | Triticum aest. | SK18-80 | TB10-KF-935 | LBA | charred seeds | 0.708959 ± 06 | | | | |
| | Hordeum vulg. | SK18-75 | TB09-KF-626 | LBA | charred seeds | 0.708968 ± 08 | | | | |
| | Hordeum vulg. | SK18-78 | TB10-KF-890 | LBA | charred seeds | 0.708944 ± 04 | | | | |
| | Hordeum vulg. | SK18-79 | TB10-KF-919 | LBA | charred seeds | 0.70893 ± 11 | | | | |
| | Hordeum vulg. | SK18-81 | TB10-KF-937 | LBA | charred seeds | 0.708937 ± 07 | | | | |
| | Mus spec. | SK18-28 | | IA | bone fragm. | 0.709237 ± 04 | | | | |
| | Mus spec. | SK18-115 | | IA | bone fragm. | 0.70848 ± 11 | | | | |
| | Mus spec. | SK18-31 | | BA | bone fragm. | 0.708273 ± 03 | | | | |
| Geoktchik Depe | Mus spec. | SK18-32 | ST-04-03 delta 3 pit | BA | bone fragm. | 0.709224 ± 06 | 0.708859 ± 0.000379 | 0.708102 - 0.709616 | | |
| | Mus spec. | SK18-119 | | LBA | tooth dentine | 0.709297 ± 05 | | | | |
| Erkurgan | Homo sap. | SK18-120 | | LBA | tooth dentine | 0.709343 ± 05 | 0.709362 ± 0.000062 | 0.709238 - 0.709485 | | |
| | Homo sap. | SK18-120 | | LBA | tooth dentine | 0.709343 ± 05 | | | | |
| Sangir-tepe | Homo sap. | SK18-120 | | LBA | tooth dentine | 0.709343 ± 05 | 0.709362 ± 0.000062 | 0.709238 - 0.709485 | | |
| | Homo sap. | SK18-120 | | LBA | tooth enamel | 0.709445 ± 07 | | | | |
| Bashman 1 | Homo sap. | SK18-120 | | LBA | tooth dentine | 0.709343 ± 05 | 0.709362 ± 0.000062 | 0.709238 - 0.709485 | | |
| | Homo sap. | SK18-120 | | LBA | tooth enamel | 0.709445 ± 07 | | | | |

438 The calculated local signals of the single sites were resultful within the available references
439 and are well distinguishable at a micro-regional scale (cf. fig. 3). The calculated strontium signal of the
440 whole region was calculated resulting in a range of **0.707466 – 0.709469** ($\pm 2\sigma$, n = 34).

441

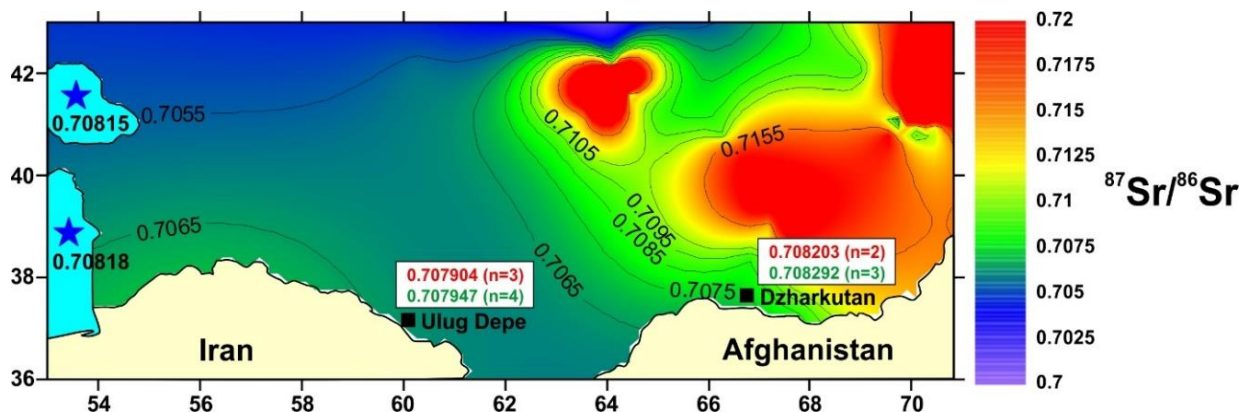
442

443 4.2. Interpolation on an interregional scale

444

445 The geographic regions of southern Central Asia comprise a large area with very diverse geological
446 conditions, making interregional comparisons difficult. But the obtained local signals are sufficiently
447 distinctive for a first evaluation on an interregional scale. The background strontium isotope values for
448 the region were reconstructed by interpolating the data for the geological units using the kriging
449 method. The strontium isotope values of the geological units with references can be found in the
450 supplementary. Although the accuracy of this reconstruction is limited by the available data and their
451 locations, higher $^{87}\text{Sr}/^{86}\text{Sr}$ ratios ($\sim 0.70800\text{--}0.70850$) are seen to the north of Dzharkutan while lower
452 values ($\sim 0.70605\text{--}0.70700$) were observed near Ulug Depe (fig. 4).

453



455 **Fig. 4:** Strontium isotope values of the geological units. Blue stars denote the isotopic values of Caspian Sea
456 water. Values in red and green denote the local mean values obtained on rodents (*Mus sp.*) and barley (*Hordeum*
457 *vulg.*) respectively.

458

459

460

461 4.3. Human $^{87}\text{Sr}/^{86}\text{Sr}$ and $\delta^{18}\text{O}$ results

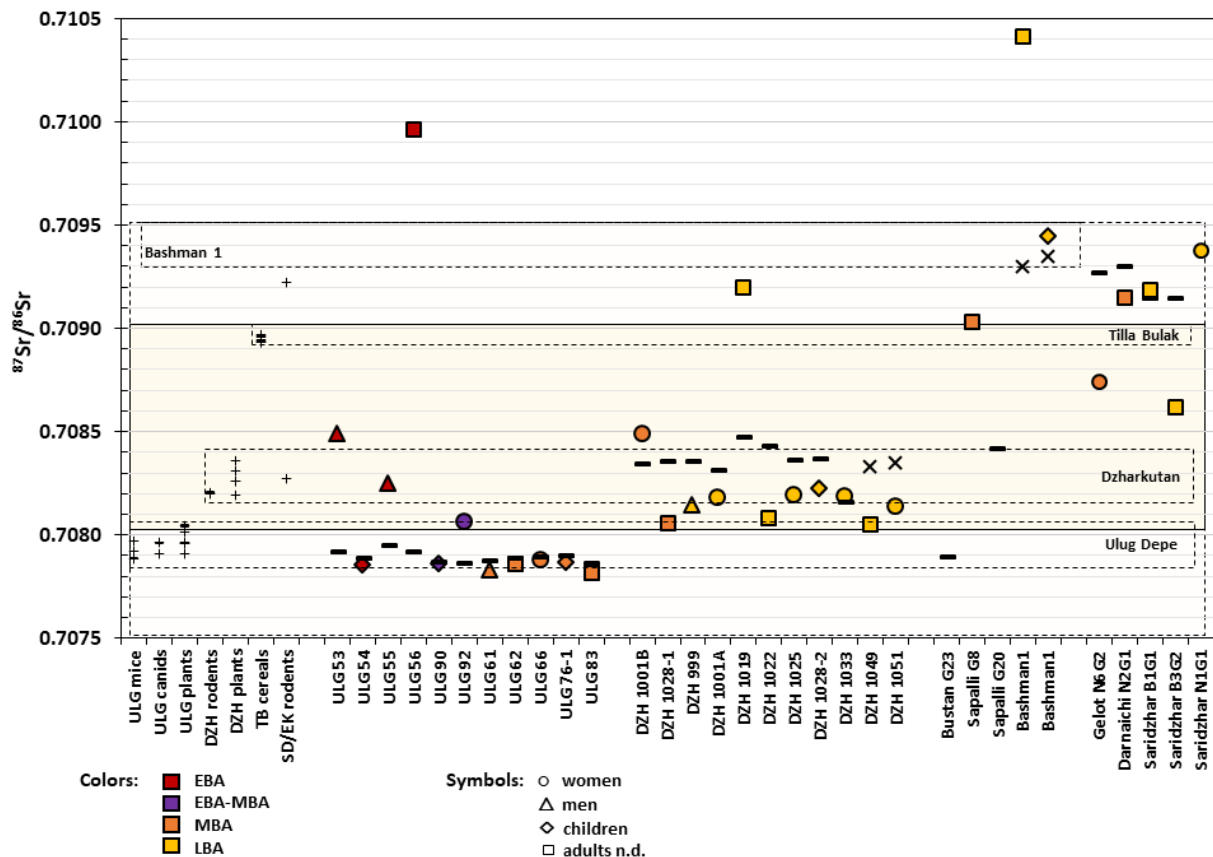
462

463 The $^{87}\text{Sr}/^{86}\text{Sr}$ and $\delta^{18}\text{O}$ results of all human samples from Ulug Depe, Dzharkutan, Sapallitepa, Bustan,
464 Bashman 1, Gelot/Darnaichi and Saridzhar are listed in table 3 and presented in figures 5, 6 and 7 (the
465 individuals from Bashman 1 were only tested for strontium, and are therefore not in figs. 6 and 7). A
466 preliminary cluster analysis of Ulug Depe and Dzharkutan individuals provided two distinguishable
467 clusters with several outliers. Hence the sites can be considered as capable of being differentiated. A

468 Levene test confirmed that there was no homogeneity of variances between the sites ($F = 2.16$, $p <$
 469 0.02). But since the small sample number made statistical analyses unreliable, we desisted from further
 470 calculations. Moreover, the deviations of the individual results were negligibly small, when plotting
 471 them on the figures the error bars were overlapped by the applied symbols so that the symbols in
 472 figures 5, 6 and 7 encompass the error margins at 2σ level for the $^{87}\text{Sr}/^{86}\text{Sr}$ ratios and 1σ level for $\delta^{18}\text{O}$
 473 ratios.

474

475



476

477

478

479

480

481

482

483

484

485

486

487

488

489

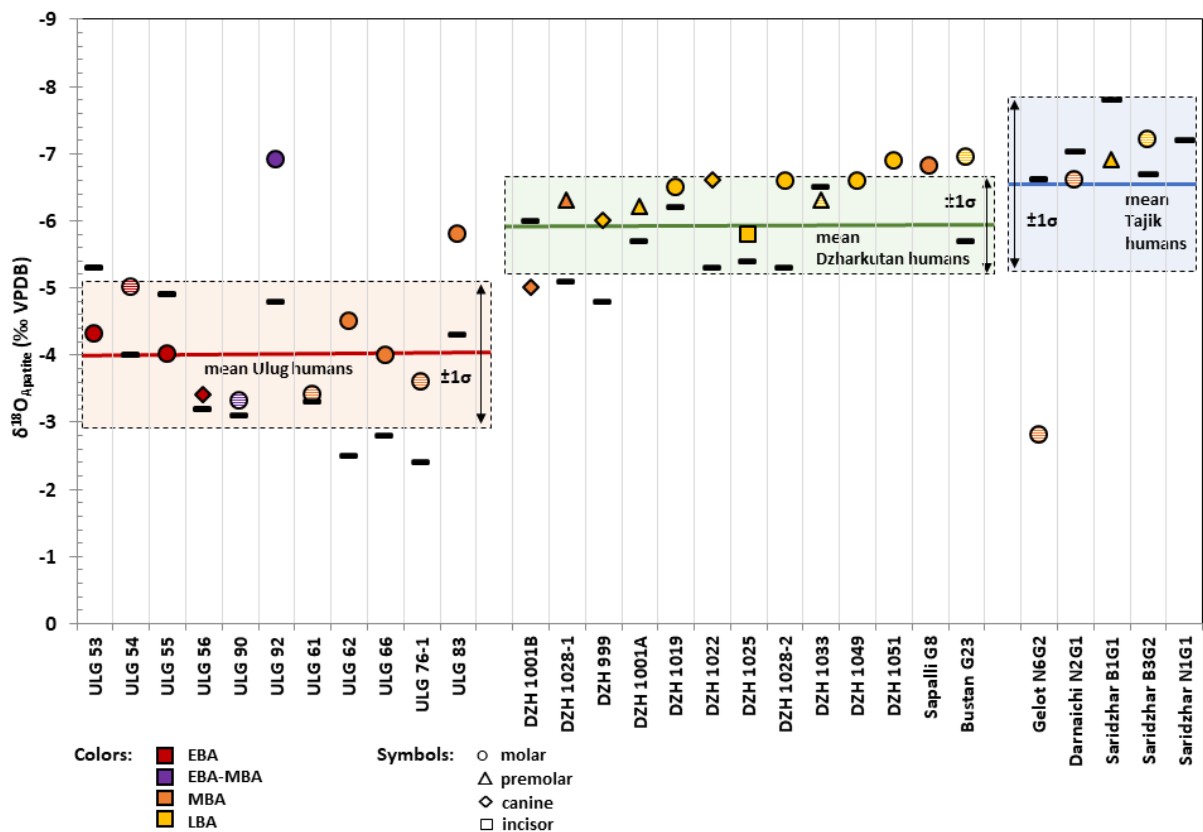
490

Fig. 5: $^{87}\text{Sr}/^{86}\text{Sr}$ results of humans and references showing the variation between samples from the same individual. Tooth enamel samples are plotted with the sign of the particular gender as well as the colour of the date, bone samples are plotted as—, dentine samples as X. Dashed boxes mark the determined local ranges, the yellow boxes mark the calculated regional range (dark $\pm 1\sigma$, light $\pm 2\sigma$). Abbreviations: ULG Ulug Depe, DZH Dzharkutan, TB Tilla Bulak, SD Sangir-tepe, EK Erkurghan.

The $^{87}\text{Sr}/^{86}\text{Sr}$ ratios of all samples from Ulug Depe ranged between 0.707864 and 0.709960, $\delta^{18}\text{O}$ ratios were between -6.9‰ and -2.4‰ (VPDB). Bone $^{87}\text{Sr}/^{86}\text{Sr}$ ratios ranged between 0.707864 and 0.707948 with a mean of 0.707893 (± 0.000026 , $n = 11$), $\delta^{18}\text{O}$ bone ratios ranged between -5.3‰ and -2.4‰ and showed a mean of -3.7‰ (± 0.97 , $n = 11$). Tooth enamel $^{87}\text{Sr}/^{86}\text{Sr}$ ranged between 0.707819 and 0.709960 and showed a mean of 0.708156 (± 0.000605 , $n = 11$), while $\delta^{18}\text{O}$ ranged between -6.9‰ and -3.2‰ with a mean of -4.4‰ (± 1.08 , $n = 11$). The $^{87}\text{Sr}/^{86}\text{Sr}$ ratios of all samples from Dzharkutan ranged between 0.708052 and 0.709200, $\delta^{18}\text{O}$ ratios of all samples ranged from -

491 6.9‰ to -3.8‰ (V-PDB). The $^{87}\text{Sr}/^{86}\text{Sr}$ ratio of human bones ranged between 0.708160 and 0.708474
 492 and showed a mean of 0.708352 (± 0.000081 , $n = 9$), bones $\delta^{18}\text{O}$ ranged between -6.5‰ and -4.8‰
 493 and showed a mean of -5.6‰ (± 0.52 , $n = 9$). Tooth enamel $^{87}\text{Sr}/^{86}\text{Sr}$ ratios ranged between 0.708052
 494 and 0.709200 and showed a mean of 0.708267 (± 0.000316 , $n = 11$), while enamel $\delta^{18}\text{O}$ ranged
 495 between -6.9‰ and -5.0‰ with a mean of -6.2‰ (± 0.49 , $n = 11$). The bone sample of burial 20 from
 496 Sapallitepa provided an $^{87}\text{Sr}/^{86}\text{Sr}$ ratio of 0.708418 (± 0.000006), while enamel $^{87}\text{Sr}/^{86}\text{Sr}$ ratio of burial
 497 8 was 0.709030 (± 0.000026). The single bone sample from Bustan had an $^{87}\text{Sr}/^{86}\text{Sr}$ ratio of 0.707893
 498 (± 0.000007), $\delta^{18}\text{O}$ was -5.7‰. The five individuals from Gelot/Darnaichi and Saridzhar range in the
 499 $^{87}\text{Sr}/^{86}\text{Sr}$ ratio between 0.708616 and 0.709374 (± 0.000241 ‰), $\delta^{18}\text{O}$ ratios ranged between -2.8‰ and
 500 -7.8‰ (± 1.4 ‰). The two individuals from Bashman 1 showed in their $^{87}\text{Sr}/^{86}\text{Sr}$ enamel ratios two very
 501 different results. The $^{87}\text{Sr}/^{86}\text{Sr}$ enamel ratio of the adults was 0.710410 (± 0.000040), the child provided
 502 an $^{87}\text{Sr}/^{86}\text{Sr}$ enamel ratio of 0.709445 (± 0.000007). The preparation of structural carbonate was not
 503 sufficient for all individuals; therefore, oxygen values are not available for one sample from Sapallitepa
 504 and all samples from Bashman 1.

505
506



507
508
509
510
511
512

Fig. 6: Human $\delta^{18}\text{O}$ results out of apatite of bones and teeth with intra-individual variations: minus mark the bone samples, geometric signs mark tooth enamel samples (M3: full coloured, M n.d: striped). Coloured lines mark the averages, dashed boxes the averages $\pm 1\sigma$.

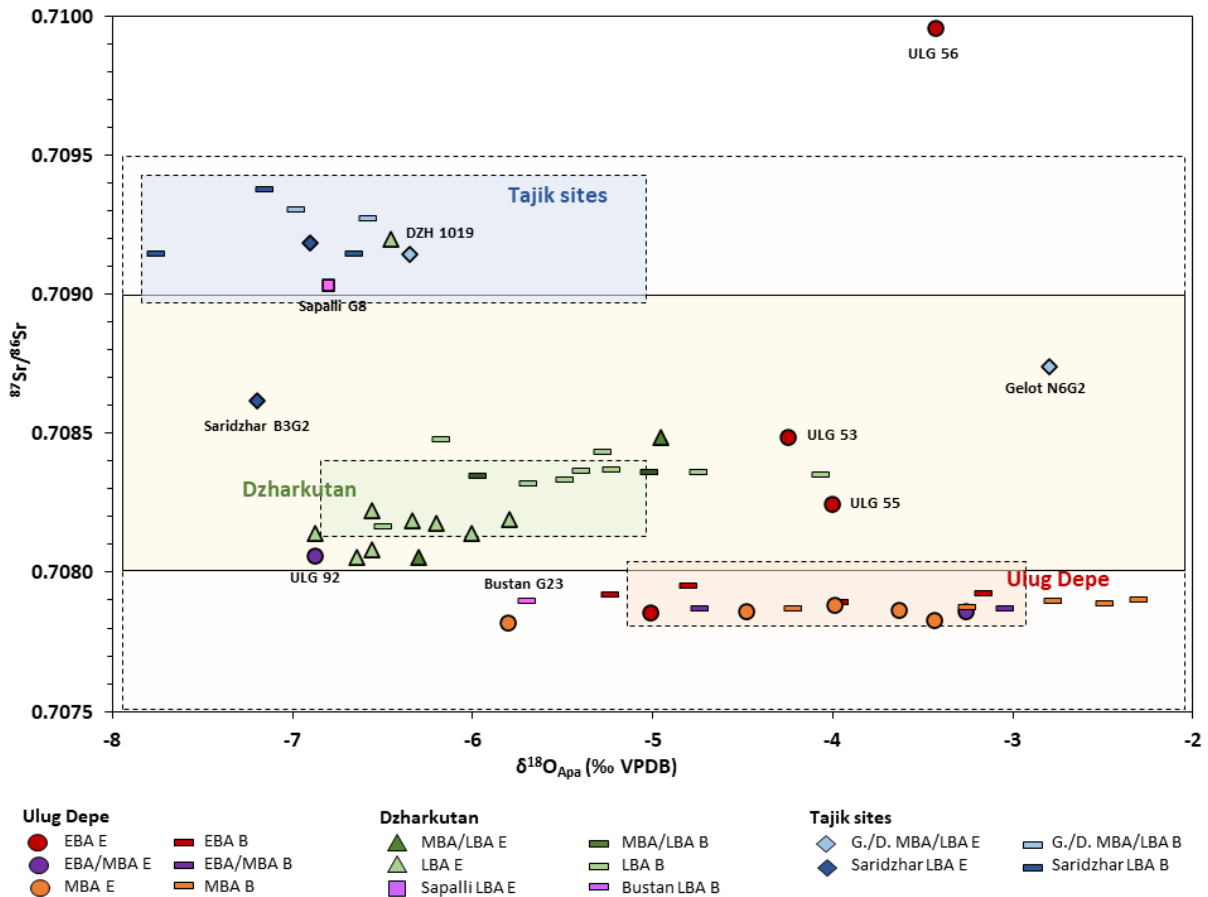
| Site | Name of sample | #Ref | Period | Age in years / sex | tooth enamel | | | | bone compacta/tooth dentine | | | | | |
|-------------|----------------|--------------------|----------------|--------------------|--------------|------------------------------------|------------------|---|-----------------------------|----------------------|------------------------------------|------------------|---|--------|
| | | | | | Material | ⁸⁷ Sr/ ⁸⁶ Sr | 2σ (last digits) | δ ¹⁸ O _{ppm} ‰ (VPDB) | 1σ | Material | ⁸⁷ Sr/ ⁸⁶ Sr | 2σ (last digits) | δ ¹⁸ O _{ppm} ‰ (VPDB) | 1σ |
| Ulug Depe | ULG 53 | ULG01-Sep53 | EBA | >40 / m | M3 | 0.708488 | ± 08 | -4.3 | ± 0.05 | phalanx | 0.707918 | ± 03 | -5.3 | ± 0.01 |
| Ulug Depe | ULG 54 | ULG01-Sep54 | EBA | 1-3 / n.d. | M | 0.707856 | ± 04 | -5.0 | ± 0.02 | rib | 0.707890 | ± 06 | -4.0 | ± 0.01 |
| Ulug Depe | ULG 55 | ULG05-Sep55 | EBA | >40 / m | M3 | 0.708247 | ± 03 | -4.0 | ± 0.04 | rib | 0.707948 | ± 04 | -4.9 | ± 0.02 |
| Ulug Depe | ULG 56 | ULG01-Sep56 | EBA | adult / n.d. | C | 0.709960 | ± 04 | -3.4 | ± 0.05 | rib | 0.707921 | ± 07 | -3.2 | ± 0.03 |
| Ulug Depe | ULG 90 | ULG06-CH17-Sep90 | EBA-MBA | ca. 3 / n.d. | M | 0.707857 | ± 04 | -3.3 | ± 0.02 | rib | 0.707867 | ± 06 | -3.1 | ± 0.02 |
| Ulug Depe | ULG 92 | ULG05-CH17-Sep92 | EBA-MBA | >40 / f | M3 | 0.708061 | ± 05 | -6.9 | ± 0.02 | bone fragm. | 0.707864 | ± 05 | -4.8 | ± 0.02 |
| Ulug Depe | ULG 61 | ULG04-Sep61 | MBA | 21-28 / m | I | 0.707826 | ± 08 | -3.4 | ± 0.03 | bone fragm. | 0.707873 | ± 04 | -3.3 | ± 0.03 |
| Ulug Depe | ULG 62 | ULG04-Sep62 | MBA | adult / n.d. | M3 | 0.707859 | ± 06 | -4.5 | ± 0.02 | phalanx | 0.707886 | ± 06 | -2.5 | ± 0.04 |
| Ulug Depe | ULG 66 | ULG04-CH1Est-Sep66 | MBA | >40 / f | M3 | 0.707880 | ± 04 | -4.0 | ± 0.04 | bone fragm. | 0.707894 | ± 05 | -2.8 | ± 0.02 |
| Ulug Depe | ULG 76-1 | ULG04-Sep76-Ind1 | MBA | 4-6 / n.d. | M | 0.707865 | ± 05 | -3.6 | ± 0.03 | vertebra | 0.707899 | ± 04 | -2.4 | ± 0.01 |
| Ulug Depe | ULG 83 | ULG05-CH17-Sep83 | MBA | adult / n.d. | M3 | 0.707819 | ± 06 | -5.8 | ± 0.03 | vertebra | 0.707865 | ± 04 | -4.3 | ± 0.02 |
| Dzharkutan | DZH 1001B | DZH-2007 Sep1001B | MBA-LBA | 20-29 / f | C | 0.708487 | ± 07 | -5.0 | ± 0.04 | bone fragm. | 0.708343 | ± 05 | -6.0 | ± 0.02 |
| Dzharkutan | DZH 1028-1 | DZH-2009 Sep1028-1 | MBA-LBA | adult / n.d. | PM | 0.708055 | ± 06 | -6.3 | ± 0.03 | phalanx | 0.708358 | ± 05 | -5.1 | ± 0.03 |
| Dzharkutan | DZH 999 | DZH-2007 Sep999 | LBA | 20-39 / m | C | 0.708142 | ± 07 | -6.0 | ± 0.03 | phalanx | 0.708355 | ± 03 | -4.8 | ± 0.02 |
| Dzharkutan | DZH 1001A | DZH-2007 Sep1001A | LBA | 20-29 / f | PM | 0.708178 | ± 08 | -6.2 | ± 0.01 | carpal | 0.708314 | ± 05 | -5.7 | ± 0.01 |
| Dzharkutan | DZH 1019 | DZH-2008 Sep 1019 | LBA | adult / n.d. | M3 | 0.709200 | ± 08 | -6.5 | ± 0.07 | phalanx | 0.708474 | ± 03 | -6.2 | ± 0.02 |
| Dzharkutan | DZH 1022 | DZH-2009 Sep1022 | LBA | adult / n.d. | PM | 0.708082 | ± 08 | -6.6 | ± 0.02 | rib | 0.708430 | ± 04 | -5.3 | ± 0.03 |
| Dzharkutan | DZH 1025 | DZH-2009 Sep1025 | LBA | 17-40 / f | I | 0.708190 | ± 06 | -5.8 | ± 0.08 | bone fragm. | 0.708362 | ± 06 | -5.4 | ± 0.03 |
| Dzharkutan | DZH 1028-2 | DZH-2009 Sep1028-2 | LBA | child / n.d. | M | 0.708223 | ± 06 | -6.6 | ± 0.07 | humerus | 0.708368 | ± 04 | -5.3 | ± 0.02 |
| Dzharkutan | DZH 1033 | DZH-2009 Sep1033 | LBA | >40 / f | PM | 0.708185 | ± 06 | -6.3 | ± 0.03 | rib | 0.708160 | ± 04 | -6.5 | ± 0.03 |
| Dzharkutan | DZH 1049 | DZH2011 Sep1049 | LBA | adult / n.d. | M3 | 0.708052 | ± 04 | -6.6 | ± 0.03 | M3 dentine | 0.708330 | ± 05 | -5.5 | ± 0.07 |
| Dzharkutan | DZH 1051 | DZH2011 Sep1051 | LBA | 15-20 / f | M3 | 0.708138 | ± 05 | -6.9 | ± 0.07 | M3 dentine | 0.708346 | ± 05 | -4.1 | ± 0.06 |
| Sepallitepa | SK17-24 | Sep 8 (2) 00-149 | LBA | adult / n.d. | M3 | 0.709030 | ± 26 | -6.8 | ± 0.03 | - | - | - | - | - |
| Sepallitepa | SAP2 | 1971 Sep. 20 0027 | LBA | adult / n.d. | - | - | - | - | - | bone fragm. | 0.708418 | ± 06 | - | - |
| Bustan | SK17-23 | Sep 23 59-30 | LBA | adult / n.d. | M1 | - | - | -6.9 | ± 0.04 | bone fragm. | 0.707893 | ± 07 | -5.7 | ± 0.04 |
| Gelot | SK17-05 | N6 grave 2 | MBA-LBA | 40 / f | M | 0.708739 | ± 05 | -2.8 | ± 0.05 | bone fragm. | 0.709270 | ± 03 | -6.6 | ± 0.04 |
| Damaichi | SK17-13 | N2 grave 1 | MBA | adult / n.d. | M | 0.709147 | ± 04 | -6.5 | ± 0.03 | skull (frontal bone) | 0.709302 | ± 08 | -7.0 | ± 0.04 |
| Saridzhar | SK17-10 | B1 grave 1 | LBA | adult / n.d. | PM | 0.709188 | ± 09 | -6.9 | ± 0.03 | skull (frontal bone) | 0.709143 | ± 05 | -7.8 | ± 0.04 |
| Saridzhar | SK17-11 | B3 grave 2 | LBA | adult / n.d. | M | 0.708616 | ± 16 | -7.2 | ± 0.04 | bone fragm. | 0.709143 | ± 10 | -6.7 | ± 0.02 |
| Saridzhar | SK17-12 | N1 grave 1 | LBA | adult / n.d. | - | - | - | - | - | bone fragm. | 0.709374 | ± 09 | -7.2 | ± 0.01 |
| Bashman1 | SK18-119 | 2018; GPS 150 | LBA | adult / n.d. | M3 | 0.710410 | ± 40 | - | - | M3 dentine | 0.709297 | ± 05 | - | - |
| Bashman1 | SK18-120 | 2018; GPS 150 | LBA | child / n.d. | M | 0.709445 | ± 07 | - | - | M dentine | 0.709343 | ± 05 | - | - |
| Ulug Depe | SK18-18 | Chantier 1 | EBA-MBA | Canis fam. | - | - | - | - | - | Mandibel | 0.707908 | ± 05 | -3.0 | ± 0.07 |
| Ulug Depe | SK18-25 | Chantier 5 | Panthera spec. | - | - | - | - | - | - | ulna | 0.707961 | ± 03 | -1.6 | ± 0.05 |

514 *Abbreviations: f: female; m: male; n.d.: not determined; M: Molar, C: Canine, I: Incisor. "M" or "bone. fragm." stand for samples where the determination was unsure, especially when samples were very little; "adult" stand for individuals where the preservation did not allow a further age determination; "child" stand for children below 14 years, but the preservation also did not allow a further age determination.

519
520
521
522
523
524
525
526
527
528
529
530
531
532
533
534
535
536
537

5. Discussion

The $^{87}\text{Sr}/^{86}\text{Sr}$ and $\delta^{18}\text{O}$ results from Ulug Depe suggest that all the analysed individuals lived their last years in Ulug Depe or the surrounding area (figs. 5, 7), due to the fact that all bone samples fell within very narrow ranges. The $^{87}\text{Sr}/^{86}\text{Sr}$ ratios of tooth enamel indicate that the EBA was a period of high immigration. None of the three analysed adult enamel $^{87}\text{Sr}/^{86}\text{Sr}$ ratios are in the local range of Ulug Depe. Burial 56 did not even lie within the calculated strontium signal of southern Central Asia, indicating a more distant origin (figs. 5, 7). Interestingly, especially the five individuals from the GKC (MBA) showed a distinct homogeneity in the $^{87}\text{Sr}/^{86}\text{Sr}$ and $\delta^{18}\text{O}$ ratios. The $\delta^{18}\text{O}$ ratios of all Ulug humans ranged between -6.9‰ and -2.4‰ with a range of 4.5‰ (enamel: 3.6‰ ; bones: 2.5‰) and average of -4.0‰ ($\pm 1.0\text{‰}$ n = 22) (fig. 6), suggesting a generally hot and arid climate in this region during the Bronze Age (Longinelli 1984; White et al. 2004). Especially, the small inter-individual variations of the bone samples indicate that people ingested water from particular water sources and not from multiple sources spread across the landscape (single site between 0.5 and 3‰ after White et al. 2004; Lightfoot, O'Connell 2016). The higher tooth enamel range evidences that the water sources of people's origin/childhood varied a bit more (fig. 6).



538

539 **Fig. 7:** Scatterplot correlation of $\delta^{18}\text{O}$ vs. $^{87}\text{Sr}/^{86}\text{Sr}$ ratios of all analysed individuals. Abbr.: E stands for enamel, B
 540 for bones, ULG for Ulug Depe, DZH for Dzharkutan, G./D. for Gelot/Darnaichi. Dashed boxes mark the $\delta^{18}\text{O}$ mean
 541 value out of human samples $\pm 1\sigma$ in combination with the calculated local $^{87}\text{Sr}/^{86}\text{Sr}$ signals ($\pm 2\sigma$). Big yellow boxes
 542 mark the inter-regional $^{87}\text{Sr}/^{86}\text{Sr}$ signal (dark $\pm 1\sigma$, light $\pm 2\sigma$).
 543
 544

545 When comparing the distribution of $^{87}\text{Sr}/^{86}\text{Sr}$ and $\delta^{18}\text{O}$ of bones and teeth from Dzharkutan
 546 individuals, two clusters are clearly visible: the bones form a cluster on the upper limit of the local
 547 $^{87}\text{Sr}/^{86}\text{Sr}$ and on the lower limit of the local $\delta^{18}\text{O}$ range, and the teeth on the opposite limits of the local
 548 ranges (figs. 5, 6). Both clusters are only partly in the determined local ranges, but as a group they fit
 549 well together. None of the Dzharkutan individuals (except DZH 1019) lie outside these clusters or in
 550 other local ranges (figs. 5, 7), demonstrating a homogeneous group of people. The $\delta^{18}\text{O}$ ratios ranged
 551 between -6.9‰ and -4.8‰ with a range of 2.1‰ and an average of -5.9‰ ($\pm 0.7\%$, $n = 20$). The results
 552 are lower than in Ulug Depe (fig. 6), suggesting a more moderate climate. The inter-individual
 553 variations are even smaller than in Ulug Depe, indicating that the people buried in Dzharkutan also
 554 ingested water from particular water sources and not from multiple sources across the valley. The
 555 surrounding landscape of Dzharkutan was characterized by the flood plains of the Sherabad, Surkhan
 556 Darya, and Amu Darya rivers and their tributary streams. Hence, the signals of Dzharkutan people could
 557 be expected to display more variety. The small intervals between the individuals, however, suggest
 558 little mobility. Interestingly, the clusters of teeth and bones indicate a complex pattern of mobility or

559 subsistence of Dzharkutans' people with movement between the place of birth/childhood and
560 residence during later lifetime in a limited area. The individuals date to the transition from MBA to the
561 LBA and to the LBA, and the results show a certain continuity over this time period. But the real cause
562 for this unusual pattern of movements of the people from Dzharkutan remains unexplained, until more
563 results can be evaluated.

564 Special patterns in terms of biological criteria such as age, sex and the archaeologically
565 indicated social position of the individuals, are only weakly reflected in the small sample size. The
566 "foreigners" from Ulug Depe were two men and one not determined adult from the EBA (ULG 53, 55,
567 56), and one woman from the EBA/MBA (ULG 92). It is not clear if the degree of mobility is connected
568 to the social position or gender of the people. The two men, who were buried in complex burial
569 constructions after the prevailing burial traditions of the EBA with rich grave inventories, were both
570 non-locals. Conspicuous, but comparable female burials are missing. In Dzharkutan, the selection of
571 samples excluded specific interpretations in terms of gender or the archaeologically indicated social
572 position, since only one man was part of the test series. This one man (DZH 999) did not differ in the
573 $^{87}\text{Sr}/^{86}\text{Sr}$ and $\delta^{18}\text{O}$ results. Furthermore, the only very rich grave of a young woman (DZH 1051) did not
574 show any differences to the group. Hence, whether there is a pattern in the mobility caused by gender
575 or social position cannot be recognised in the present evidence.

576 Concerning the question of migration and the movements of single individuals between
577 populations, the correlation of strontium and oxygen seems to point to the fact that the origins of
578 some of our non-locals are quite clear and inter-regional connections really existed. The enamel
579 $^{87}\text{Sr}/^{86}\text{Sr}$ and $\delta^{18}\text{O}$ results of Burial no. 1019 from Dzharkutan and Burial no. 8 from Sapallitepa fit
580 perfectly within the cluster of Gelot/Darnaichi and Saridzhar people (fig. 7), demonstrating that with
581 the exchange of material (cf. Luneau 2013) also individuals moved. The $^{87}\text{Sr}/^{86}\text{Sr}$ and $\delta^{18}\text{O}$ ratios of
582 Gelot/Darnaichi and Saridzhar individuals highlight a homogeneous group of people (fig. 7). It is
583 conspicuous, however, that all analysed bone samples fell in the same range but only two of four tooth
584 enamel samples. The results suggest that immigration also played an important role during the Bronze
585 Age in southern Tajikistan (cf. Kroll et al. forthcoming). Moreover, the adult individual from Bashman
586 1 is noticeable, as it fell together with ULG 56 outside the calculated regional signal, suggesting an
587 external origin of this individual too (fig. 5). Bashman 1 is located south of the Syr Darya which marks
588 the northern border of the GKC and an area inhabited by both– the GKC groups and Andronovo groups
589 – in the first half of the 2nd mill. BCE. Isotopic studies from the northern communities, where nomadic
590 pastoralism is argued to be a reason for the spread of the Andronovo culture, did not provide evidence
591 for long distance migration (Ventresca Miller et al. 2017). Although providing a contrasting image, our
592 results are provisional but, nevertheless the high variation in the results suggests active mobility
593 among the inhabitants of southern Central Asia during the Bronze Ages.

594
595
596
597
598
599
600
601
602
603
604
605
606
607
608
609
610
611
612
613
614
615
616
617

6. Conclusion

The present study has provided a first biogeochemical dataset of $^{87}\text{Sr}/^{86}\text{Sr}$ isotopes from southern Central Asia and has enabled the initial evaluation of the isotopic distribution on a micro-regional scale. The analyses of $^{87}\text{Sr}/^{86}\text{Sr}$ and $\delta^{18}\text{O}$ isotopes on human material indicate that the populations in Ulug Depe and Dzharkutan were mainly sedentary with an intensive use of the surrounding landscape. The results revealed Ulug Depe during the early periods (EBA, EBA–MBA) with a high rate of immigration, four of six analysed individuals from these time periods did not fall within the local range. Remarkably, the individuals from the GKC phase showed little mobility and almost no immigration. Although this represents a time period of great changes, powerful empires and widespread networks, it seems the inhabitants of Ulug Depe and Dzharkutan remained local. The mobility pattern of Dzharkutan people was different; analyses displayed homogeneous clusters on the upper and lower limit of the local ranges. The results suggest complex patterns of mobility or subsistence, where movements between a person's place of birth/childhood and residence were a regular feature, observable throughout the centuries. The isotopic results of the other sites in the Surkhan Darya Valley and southern Tajikistan indicate active mobility and corroborate the known exchange of artifacts and technologies. However, the limited number of samples provides only a glimpse of the complex dynamics during Bronze Age in southern Central Asia and further studies are necessary to confirm or broaden the obtained insights.

Acknowledgements We address our first acknowledgments to the Mission archéologique Franco-Ouzbèke Protohistoire (MAFOuz-P), the Mission archéologique franco-turkmène (MAFTur), the French Ministry of Foreign Affairs (MEAE), the French embassies in Turkmenistan and Uzbekistan, the French Archaeological Delegation in Afghanistan (DAFA), the Turkmenistan Directorate for the Protection, Study and Conservation of Historical and Cultural Heritage, the Directorate of the Archaeological Park of Abiwerd (Turkmenistan), the German Archaeological Institute's missions in Tajikistan and Uzbekistan (with funding provided by the DFG, German Research Foundation, project number 392943887), and the Munich University mission to Tilla Bulak (with funding provided by the Gerda Henkel Foundation). Their support has made the excavations possible, upon which the present work is based. Additionally, we would like to thank the Mission Archéologique Franco–Ouzbèke de Sogdiane (MAFOUZ-Sogdiane) and the Archaeological Institute of Samarkand for authorizing the use of comparative samples. Moreover, we are grateful to the Laboratory AASPE UMR 7209 of the Museum National d'Histoire Naturelle in Paris and the Laboratory of Geoscience in Montpellier for hosting our project. Finally, special thanks should be addressed to the reviewers for their inspiring and constructive comments and to Prof. Michael Roaf for his personal review and the English editing.

633 **References**

634

635 Amiet P (1986) L'âge des échanges inter-iraniens. 3500-1700 avant J.-C. Editions de la Réunion des
636 Musées Nationaux, Paris.

637

638 Askarov AA, Abdullaev BN (1983) Džarkutan [Dzharkutan]. FAN, Tashkent.

639

640 Askarov AA (1973) Sapallitepa. FAN, Tashkent.

641

642 Avanesova NA (2016) Bustan VI – The necropolis of fire-worshippers of pre-urban Bactria.
643 International Institute for Central Asian Studies, Samarkand.

644

645 Atamuradov H, Fet GN, Fet V, Valdez R, Feldman W (1999) Biodiversity, genetic diversity, and
646 projected areas in Turkmenistan. *Journal of Sustainable Forestry* 9(1-2), pp 7388.
647 https://doi.org/10.1300/J091v09n01_06

648

649 Balasse M, Tresset A (2009) A key to the adaptation of Neolithic husbandry in the Orkneys:
650 contribution of seaweed to the sheep diet at the Holm of Papa Westray, revealed through
651 stable isotope analysis ($\delta^{13}\text{C}$ and $\delta^{18}\text{O}$) of teeth. In: Ritchie A (eds) *On the fringe of Neolithic*
652 *Europe. Excavation of a chambered cairn on the Holm of Papa Westray, Orkney*, Society of
653 *Antiquaries of Scotland*, Edinburgh, pp 74-82.

654

655 Balasse M, Ambrose S, Smith A, Price TD (2002) The seasonal mobility model for prehistoric herders
656 in the south-western cape of South Africa assessed by isotopic analysis of sheep tooth
657 enamel. *JAS* 29, pp 917–32. <https://doi.org/10.1006/jasc.2001.0787>

658

659 Behrensmeyer AK (1978) Taphonomic and ecologic information from bone weathering. *Paleobiology*
660 4, pp 150-162.

661

662 Bendezu-Sarmiento J, Lhuillier J (2019) Habitat and Occupancy during the Bronze Age in Central Asia.
663 Recent work at the sites of Ulug-depe (Turkmenistan) and Dzharkutan (Uzbekistan), *Urban*
664 *Cultures of Central Asia from the Bronze Age to the Karakhanids*, Harrassowitz Verlag
665 Wiesbaden & Harrassowitz.

666

667 Bendezu-Sarmiento J, Lhuillier J (2016) Some more exceptional discoveries at Ulug-depe. In: Dubova
668 NA, Antonova EV, Kozhin PM, Kosarev MF, Muradov RG, Sataev RM, Tishkin AA (eds)
669 *Transactions of Margiana Archaeological Expedition. vol. 6, To the memory of Professor*
670 *Viktor Sarianidi*, Moscou, pp 522-528.

671

672 Bendezu-Sarmiento J (2013) Archéologie funéraire et bio-anthropologie à Ulug dépe et Dzharkutan.
673 Âge du bronze au Turkménistan et en Ouzbékistan. In: Bendezu-Sarmiento J (ed)
674 *L'archéologie française en Asie centrale. Nouvelles recherches et enjeux socioculturels*,
675 *Cahiers d'Asie Centrale* 21/22, pp 501–532.

676

677 Bendezu-Sarmiento J, Mustafakulov S (2013) Le site proto-urbain de Dzharkutan durant les âges du
678 bronze et du fer. *Recherches de la Mission archéologique franco-ouzbèke-Protohistoire*. In:
679 Bendezu-Sarmiento J (ed) *L'archéologie française en Asie centrale. Nouvelles recherches et*
680 *enjeux socioculturels*, *Cahiers d'Asie Centrale* 21/2, pp 207–236.

681

682 Bentley RA (2006) Strontium isotopes from the earth to the archaeological skeleton: a review.
683 *Journal of Archaeological Method and Theory* 13, pp 135-187.
684 <https://doi.org/10.1007/s10816-006-9009-x>

685
686 Bentley RA, Knipper C (2005) Geographical patterns in biologically available strontium, carbon and
687 oxygen isotope signatures in prehistoric SW Germany. *Archaeometry* 47, pp 629-644.
688 <https://doi.org/10.1111/j.1475-4754.2005.00223.x>
689
690 Biscione R, Vahdati AA (2021) The BMAC presence in eastern Iran: state of affairs in December 2018
691 – towards the Greater Khorasan Civilization? In: Lyonnet B. and Dubova N. (eds) *The World of*
692 *the Oxus Civilization*. Routledge, London.
693
694 Biscione R (1976) The crisis of Central Asia urbanization in II millennium BC and villages as an
695 alternative system. In: Deshayes J (ed) *Le Plateau Iranien et l'Asie Centrale des Origines à la*
696 *Conquête Islamique*. Paris, CNRS, pp 113–127.
697
698 Böhlke J, Horan M (2000) Strontium isotope geochemistry of groundwaters and streams affected by
699 agriculture, Locust Grove, MD. *Applied Geochemistry* 15, pp 599-609.
700 [https://doi.org/10.1016/S0883-2927\(99\)00075-X](https://doi.org/10.1016/S0883-2927(99)00075-X)
701
702 Bowen GJ, Wasenaar LI, Hobson KA (2005) Global application of stable hydrogen and oxygen isotopes
703 to wildlife forensics, *Oecologia* 143, pp 337–348.
704
705 Bowen GJ (2012) The Online Isotopes in Precipitation Calculator. Version 2.2.
706 <http://www.waterisotopes.org>
707
708 Brettell R, Montgomery J, Evans J (2012) Brewing and stewing: The effect of culturally mediated
709 behaviour on the oxygen isotope composition of ingested fluids and the implications for
710 human provenance studies. *Journal of Analytical Atomic Spectrometry* 27, pp 778–785.
711 <https://doi.org/10.1039/C2JA10335D>
712
713 Budd P, Millard A, Chenery C, Lucy S, Roberts C (2004) Investigating population movement by stable
714 isotope analysis: A Report from Britain. *Antiquity* 78(299), pp 127-139.
715 <https://doi.org/10.1017/S0003598X0009298X>
716
717 Budd P, Montgomery J, Barreiro B, Thomas R (2000) Differential diagenesis of strontium in
718 archaeological human dental tissues. *Applied Geochemistry* 15/5, pp 687-694.
719 [https://doi.org/10.1016/S0883-2927\(99\)00069-4](https://doi.org/10.1016/S0883-2927(99)00069-4)
720
721 Burton JH, Price TD (2013) Seeking the local $87\text{Sr}/86\text{Sr}$ ratio to determine geographic origins of
722 humans. In: Armitage RA, Burton JH (eds) *Archaeological chemistry VIII*, American Chemical
723 Society, Washington DC, pp 309–320.
724
725 Cattani M, Salvatori S, Tosi M (2008) The final phase of the Bronze Age and the 'Andronovo Question'
726 in Margiana. In: Salvatori S and Tosi M (eds) *The Bronze Age and early Iron Age in the*
727 *Margiana lowlands. Facts and methodological proposals for a redefinition of the research*
728 *strategies, the archaeological map of the Murghab delta studies and Reports*, pp 133-151.
729
730 Clauer N, Chaudhuri S, Toulkeridis T, Blanc G (2000) Fluctuations of Caspian Sea level: Beyond
731 climatic variations? *Geology* 28(11), pp 1015–1018.
732 [https://doi.org/10.1130/0091-7613\(2000\)28<1015](https://doi.org/10.1130/0091-7613(2000)28<1015)
733
734 De la Vaissière E (2002) Central Asia and the Silk Road. In: Fitzgerald Johnson S. (Ed.), *The Oxford*
735 *Handbook of Late Antiquity*, Oxford University Press, Oxford.
736 <https://doi.org/10.1093/oxfordhb/9780195336931.013.0005>
737

738 Denys C (2002) Taphonomy and experimentation. *Archaeometry* 44, pp 469-484.
739
740 Dolgoplova A, Seltmann R, Konopelko D, Biske SY, Shatov V, Armstrong R, Belousova E, Pankhurst R,
741 Koneev R, Divaev F (2017) Geodynamic evolution of the western Tien Shan, Uzbekistan:
742 Insights from U-Pb SHRIMP geochronology and Sr-Nd-Pb-Hf isotope mapping of granitoids.
743 *Gondwana Research* 47, pp 76–109. <https://doi.org/10.1016/j.gr.2016.10.022>
744
745 Evans JA, Montgomery J, Wildman G, Boulton N (2010) Spatial variations in biosphere
746 $^{87}\text{Sr}/^{86}\text{Sr}$ in Britain. *Journal of the Geological Society* 167(1).
747
748 Faure G, Mensing TM (2005) *Isotopes: Principles and Applications*. Wiley, Hoboken, N.J.
749
750 Faure G (1986) *Principles of Isotope Geology*. John Wiley & Sons, New York.
751
752 Fet V, Atamuradov KI (1994) *Biogeography and Ecology of Turkmenistan*. Kluwer Academic
753 Publishers, Dordrecht.
754
755 Fiorentino G, Ferrio JP, Bogaard A, Araus JL, Riehl S (2014) Stable isotopes in archaeobotanical
756 research. *Veget Hist Archaeobot*, Springer-Verlag Berlin Heidelberg.
757 <https://doi.org/10.1007/s00334-014-0492-9>
758
759 Frachetti MD (2012) Multiregional emergence of mobile pastoralism and nonuniform institutional
760 complexity across Eurasia. *Curr Anthropol* 53. <https://doi.org/10.1086/663692>
761
762 Frachetti MD, Rouse LM (2012) Central Asia, the Steppe, and the Near East, 2500–1500 BC. In: D
763 Potts (eds) *A Companion to the Archaeology of the Ancient Near East*. Blackwell Publishing,
764 Oxford, pp 688–705. <https://doi.org/10.1002/9781444360790>
765
766 Frachetti MD (2011) Migration Concepts in Central Eurasien Archaeology. *Annu Rev Anthropol* 40, pp
767 195-212. <https://doi.org/10.1146/annurev-anthro-081309-145939>
768
769 Francfort HP (2009) L'âge du bronze en Asie centrale. La civilisation de l'Oxus. *Anthropology of the*
770 *Middle East* 4(1), pp 91–111. <https://doi.org/10.3167/ame.2009.040106>
771
772 Ghassemi MR, Garzanti E (2019) Geology and geomorphology of Turkmenistan: A review. *Geopersia*,
773 9(1), pp 125-140.
774
775 Gerling C (2015) Prehistoric Mobility and Diet in the West Eurasian Steppes 3500 to 300 BC: An
776 Isotopic Approach. Walter de Gruyter, Berlin.
777
778 Grupe G, Price T, Schroter P, Söllner F, Johnson C, Beard B (1997) Mobility of the Bell Beaker people
779 revealed by strontium isotope ratios of tooth and bone: a study of southern Bavarian skeletal
780 remains. *Applied Geochemistry* 12, pp 517-525.
781 [https://doi.org/10.1016/S0883-2927\(97\)00030-9](https://doi.org/10.1016/S0883-2927(97)00030-9)
782
783 Hedges REM (2002) Bone Diagenesis: An Overview of Processes. *Archaeometry* 44/3, pp 319-328.
784
785 Hiebert FT (1994) *Origins of the Bronze Age Oasis Civilization in Central Asia*. Peabody Museum Press,
786 Cambridge, MA.
787
788 Hillson S (2005) *Teeth*. Cambridge University Press, Cambridge.
789

- 790 Hoppe KA, Koch PL, Furutani TT (2003) Assessing the preservation of biogenic strontium in fossil
791 bones and tooth enamel. *International Journal of Osteoarchaeology* 13(1-2), pp 20-28.
792
- 793 Huff D, Teufer M (2010) Dzharkutan, Uzbekistan. In: Boroffka, N, Hansen, Svend. *Archäologische*
794 *Forschungen in Kasachstan, Tadschikistan, Turkmenistan und Usbekistan: Deutsches*
795 *Archäologisches Institut, Eurasien-Abteilung, Berlin*, pp 22-27.
796
- 797 Huff D, Pidaev Š, Šaydullaev Š (2001) Uzbek-German archaeological researches in the Surkhan Darya
798 region. In: Leriche P, Pidaev Š, Gelin M, Abdoullaev K (eds) *La Bactriane au carrefour des*
799 *routes et des civilisations de l'Asie centrale. Termez et les villes de Bactriane-Tokharestan.*
800 *Actes du colloque de Termez 1997, Maisonneuve et Larose – IFEAC, Paris*, pp 219-233.
801
- 802 Kaniuth K (2021) Life in the countryside. The rural archaeology of the Sapalli culture. In: Lyonnet B
803 and Dubova N (eds) *The World of the Oxus Civilization*. Routledge, London.
804
- 805 Kaniuth K (2016) The Late Bronze Age Settlement of Tilla Bulak (Uzbekistan) – a summary of four
806 years' work. In: Lefèvre V, Didier A, Mutin B (eds) *South Asian Archaeology and Art 2012.*
807 *Man and environment in Prehistoric and Protohistoric South Asia: New Perspectives.*
808 *Indicopleustoi, Brepols, Turnhout*, pp 117–127.
809
- 810 Kaniuth K (2009) Analyse pflanzlicher Makroreste von Bodenproben von Michael Peters, in: Tilla
811 Bulak 2008 - Vorbericht zur zweiten Kampagne. *AMIT* 41, pp 89-91.
812
- 813 Kempe U, Belyatsky RS, Kremenetsky AA, Ivanov PA (2001) Sm-Nd and Sr isotope systematics of
814 scheelite from the giant Au(-W) deposit Muruntau (Uzbekistan): implications for the age and
815 sources of Au mineralization. *Mineralium Deposita* 36, pp 379-392.
816 <https://doi.org/10.1007/s001260100156>
817
- 818 Knipper C (2004) Die Strontiumisotopenanalyse: eine naturwissenschaftliche Methode zur Erfassung
819 von Mobilität in der Ur-und Frühgeschichte. *Jahrbuch des Römisch-Germanischen*
820 *Zentralmuseums Mainz*, 51(2), pp 589-686.
821
- 822 Kohl PL (2007) *The making of Bronze Age Eurasia*. Cambridge University Press, Cambridge.
823
- 824 Kroll SK, Teufer M, Vinogradova N, Kutimov Y, Lombardo G, Bosch D, Mashkour M (forthcoming in
825 spring 2023) Isotopic studies and archaeological evidence in Bronze Age Tajikistan: The Lady
826 from Gelot. In: C. Baumer and M. Novak (eds) *Cultures in Contact Central Asia as Focus of*
827 *Trade, Cultural Exchange and Knowledge Transmission. Proceedings of the Second*
828 *International Congress on Central Asian Archaeology held at the University of Bern, 13-15*
829 *February 2020, Harrassowitz, Wiesbaden*.
830
- 831 Lamberg-Karlovsky CC (2013) The Oxus Civilization. *La Civilización del Oxus*. *CuPAUAM* 39, pp 21-63.
832
- 833 Lecomte O (2013) Activités archéologiques françaises au Turkménistan. In: Bendezu-Sarmiento J (ed)
834 *Archéologie française en Asie centrale. Nouvelles recherches et enjeux socioculturels.*
835 *Cahiers d'Asie Centrale* 21/22, pp 165-190.
836
- 837 Lecomte O (2011) Ulug-depe: 4000 years of evolution between plain and desert. In: *Historical and*
838 *Cultural Sites of Turkmenistan. Monuments of History and Culture of Turkmenistan*
839 *(Discoveries, Researches and Restoration for 20 years of Independence)*. Turkmen state
840 publishing service, pp 221-238.
841
- 842 Lecomte O (2007a) An Iron Age Urban Settlement Revealed by Magnetic Survey: The Case of Ulug

843 Depe (Turkmenistan). In: Posselt M, Zickgraf B, Dobiak C (eds.) Geophysics and excavation.
844 Deployment and utilization of non-destructive methods in Archaeology, Verlag Marie Leidorf
845 GmbH, Rahden/Westf, pp 99-111.
846

847 Lecomte O (2007b) Gorgân and Dehistan: The North-East Frontier of the Iranian Empire. In Cribb J
848 and Hermann G (eds) After Alexander. Central Asia before Islam, British Academy Scholarship
849 Online. <https://doi.org/10.5871/bacad/9780197263846.001.0001>
850

851 Lecomte O (2005) The Iron Age of Northern Hyrcania. *Iranica Antiqua* 40, pp 461-478.
852 <https://doi.org/10.2143/IA.40.0.583222>
853

854 Lhuillier J (2016) Ulug-depe and the transition period from Bronze Age to Iron Age in Central Asia. A
855 tribute to VI Sarianidi.
856

857 Lightfoot E, O'Connell TC (2016) On the Use of Biomineral Oxygen Isotope Data to Identify Human
858 Migrants in the Archaeological Record: Intra-Sample Variation, Statistical Methods and
859 Geographical Considerations. *PloS one*. <https://doi.org/11/4:e0153850>
860

861 Lombardo G, Vinogradova N, Kutimov J, Teufer M, Filimonova T (2014) Excavations of the burial
862 ground of Gelot in 2007-2010. *Bollettino di Archeologia on line*. Direzione Generale per le
863 Antichità, pp 1-26.
864

865 Longinelli A (1984) Oxygen isotopes in mammal bone phosphate: a new tool for palaeohydrological
866 and palaeoclimatological research? *Geochimica et Cosmochimica Acta* 48, pp 385-390.
867 [https://doi.org/10.1016/0016-7037\(84\)90259-X](https://doi.org/10.1016/0016-7037(84)90259-X)
868

869 Luneau E (2019) Climate Change and the Rise and Fall of the Oxus Civilization in Southern Central
870 Asia. In: *Socio-Environmental Dynamics along the Historical Silk Road*. Cham Springer
871 International Publishing, pp 275–99. https://doi.org/10.1007/978-3-030-00728-7_14
872

873 Luneau E (2017) Transfers and Interactions between North and South in Central Asia during the
874 Bronze Age. In: Allinger E, Grenet F, Jahoda C, Lang MK, Vergati A (eds) *Interaction in the
875 Himalayas and Central Asia*, Vienna, Austrian Academy of Sciences Press, pp 13-27.
876 <https://doi.org/10.2307/j.ctt1pv891n.5>
877

878 Luneau E (2014) La fin de la civilisation de l'Oxus. Transformations et recompositions des sociétés de
879 l'âge du Bronze final en Asie centrale méridionale (1800-1500/1400 avant n.è.). *Mémoires
880 des Missions Archéologiques Françaises en Asie Centrale et en Asie Moyenne*, Tome XVI,
881 Paris, Éditions de Boccard, Paris.
882

883 Luneau E, Bendezu-Sarmiento J, Mustafakulov S (2013) Вахшская культура на Джаркутане
884 (Узбекистан, бронзовый век): Новое освоение ? [The Vakhsh culture at Dzharkutan
885 (Uzbekistan, Bronze Age): a new occupancy?]. In: Kolganova G. Ju, Petrova A.A., Kullanda S.V.
886 (Eds), *Последний энциклопедист. К юбилею со дня рождения Б.А. Литвинского [The last
887 encyclopedist. The Issue in Honor of the 90-Anniversary of Boris Litvinsky]*, Moscow, Institut
888 of Oriental Studies, pp 253-263.
889

890 Lyonnet B and Dubova N (eds.) (2021) *The World of the Oxus Civilization.*, Routledge, London.
891

892 Makarewicz CA, Pederzani S (2017) Oxygen ($\delta^{18}O$) and carbon ($\delta^{13}C$) isotopic distinction in
893 sequentially sampled tooth enamel of co-localized wild and domesticated caprines:
894 Complications to establishing seasonality and mobility in herbivores. *Palaeogeography,
895 Palaeoclimatology, Palaeoecology*. <http://dx.doi.org/10.1016/j.palaeo.2017.01.010>

896
897 Mashkour M, Amiri S, Fathi H (2016) Rapport préliminaire sur l'étude archéozoologique des sites de
898 Dzarkutan, de Kok Tepe, de Sangir Tepe et Padayatak en Uzbekistan. IFAC.
899
900 Mashkour M (2013) Sociétés pastorales et économies de subsistance au Nord Est de l'Iran et au Sud
901 du Turkménistan. In: Bendezu-Sarmiento J (ed) L'archéologie française en Asie centrale.
902 Nouvelles recherches et enjeux socioculturels, Cahiers d'Asie Centrale 21/22, pp 533-544.
903
904 Mashkour M (1998) The subsistence Economy in the Rural Community of Geoktchik Depe in
905 Southern Turkmenistan; Preliminary Results of the Faunal Analysis. In: Buitenhuis H,
906 Bartosiewicz H, Choyke AM (eds) Archaeozoology of the Near East III, ARC Publication,
907 Groningen, pp 200-220.
908
909 Maurer AF, Galer SJG, Knipper C, Beierlein L, Nunn EV, Peters D, Tütken T, Alt KW, Schöne BR (2012)
910 Bioavailable ⁸⁷Sr/⁸⁶Sr in different environmental samples — Effects of anthropogenic
911 contamination and implications for isoscapes in past migration studies. *Science of the Total*
912 *Environment* 433, pp 216–229. <https://doi.org/10.1016/j.scitotenv.2012.06.046>
913
914 Meisel T, Krahenbuhl U, Nazarov MA (1995) Combined osmium and strontium isotopic study of the
915 Cretaceous-Tertiary boundary at Sumbar, Turkmenistan: A test for an impact vs. a volcanic
916 hypothesis. *Geology* 23/4, pp 313–316. [https://doi.org/10.1130/0091-](https://doi.org/10.1130/0091-7613(1995)023<0313:COASIS>2.3.CO;2)
917 [7613\(1995\)023<0313:COASIS>2.3.CO;2](https://doi.org/10.1130/0091-7613(1995)023<0313:COASIS>2.3.CO;2)
918
919 Millard A, Lucy S, Roberts C (2004) Direct evaluation of archaeological immigration, population
920 dynamics and lead exposure by isotope biogeochemistry. AnNERC project at the University of
921 Durham. <http://www.dur.ac.uk>
922
923 Miller NF (2003) The use of plants at Anau North. In: FT Hiebert, K Kurdansakhatov (eds) A Central
924 Asian village at the dawn of civilization, excavations at Anau, Turkmenistan. University of
925 Pennsylvania Museum, Philadelphia.
926
927 Miller NF (1999) Agricultural development in western Central Asia in the Chalcolithic and Bronze
928 Ages. *Veget Hist Archaeobot* 8, pp 13–19.
929
930 Moore K, Miller NF, Hiebert FT, Meadow RH (1994) Agriculture and herding in early oasis settlements
931 of the Oxus civilization. *Antiquity* 68, pp 418–427.
932
933 Mukin P, in Moore EM, Fairbridge RW (1997) *Encyclopedia of European and Asian regional Geology.*
934 "Uzbekistan". Chapman & Hall 1997, Springer, Dordrecht, pp 766-773.
935
936 Pin C, Briot D, Bassin C, Poitrasson F (1994) Concomitant separation of strontium and samarium–
937 neodymium for isotopic analysis in silicate samples, based on specific extraction
938 chromatography. *Analytica Chimica Acta* 298, pp 209–217. [https://doi.org/10.1016/0003-](https://doi.org/10.1016/0003-2670(94)00274-6)
939 [2670\(94\)00274-6](https://doi.org/10.1016/0003-2670(94)00274-6)
940
941 Poage MA, Chamberlain CP (2001) Empirical relationships between elevation and the stable isotope
942 composition of precipitation and surface waters: Considerations for studies of paleoelevation
943 change. *American Journal of Science* 301, pp 1–15.
944
945 Possehl G (2007) The Middle Asian interaction sphere. Trade and contact in the 3rd Millenium BC.
946 *Expedition* 49(1), pp 40-42. <http://www.penn.museum/sites/expedition/?p=9444>
947

948 Price TD, Grupe G, Schröter P (1994a) Reconstruction of migration patterns in the Bell Beaker period
949 by stable strontium isotope analysis. *Applied Geochemistry* 9(4), pp 413-417.
950

951 Price TD, Burton JH (2002) Characterization of biologically available strontium isotope ratios for the
952 study of prehistoric migration. *Archaeometry* 44, pp 117-135. [https://doi.org/10.1111/1475-](https://doi.org/10.1111/1475-4754.00047)
953 [4754.00047](https://doi.org/10.1111/1475-4754.00047)
954

955 Price, T.D., Knipper, C., Grupe, G., Smrcka, V. (2004). Strontium isotopes and prehistoric human
956 migration: the Bell Beaker period in central Europe. *European journal of archaeology*, 7(1),
957 pp 9–40.
958

959 Rouse LM (2020) Silent partners: archaeological insights on mobility, interaction and civilization in
960 Central Asia's past, *Central Asian Survey*, <https://doi.org/10.1080/02634937.2020.1769024>
961

962 Rouse LM, Cerasetti B (2018) Mixing metaphors: sedentary-mobile interactions and local-global
963 connections in prehistoric Turkmenistan. *Antiquity* 92(363), pp 674–689.
964 <https://doi.org/10.15184/aqy.2018.88>
965

966 Royer A, Daux V, Fourel F, Lécuyer C. (2017) Carbon, nitrogen and oxygen isotope fractionation
967 during food cooking: Implications for the interpretation of the fossil human record. *Am J Phys*
968 *Anthropol*, pp 1-13. <https://doi.org/10.1002/ajpa.23246>
969

970 Salvatori S (2016) Bactria-Margiana Archaeological Complex: how terminology hides historical
971 processes. In: Dubova NA, Antonova EV, Kozhin PM, Kosarev MF, Muradov RG, Sataev RM,
972 Tishkin AA (eds) *Transactions of Margiana Archaeological Expedition, Vol. 6 To the memory*
973 *of Professor Viktor Sarianidi, Moscow*, pp 449-460.
974

975 Salvatori S (2008a) The Margiana Settlement Pattern from the Middle Bronze Age to the Parthian-
976 Sasanian Period: A Contribution to the Study of Complexity. In: Salvatori S, Tosi M, Cerasetti
977 B (eds) *The Bronze Age and Early Iron Age in the Margiana Lowlands. Facts and*
978 *Methodological Proposals for a Redefinition of the Research Strategies*, Oxford UK BAR
979 *International Series 1806, Oxford*, pp 57–74.
980

981 Salvatori S (2008b) Cultural Variability in the Bronze Age Oxus Civilization and Its Relations with the
982 Surrounding Regions of Central Asia and Iran. In: Salvatori S, Tosi M, Cerasetti B (eds) *The*
983 *Bronze Age and Early Iron Age in the Margiana Lowlands. Facts and Methodological*
984 *Proposals for a Redefinition of the Research Strategies*, Oxford UK BAR *International Series*
985 *1806, Oxford*, pp 75–98.
986

987 Sánchez del Corral A, Thum H (2012) Geomorphology and Late Holocene morphogenesis of Tchinguiz
988 Tepe hill (Old Termez, Uzbekistan, Central Asia). *Quaternary International* 281, pp 89-104.
989

990 Sarianidi VI (2005) *Gonurdepe. City of Kings and Gods*. Miras, Ashgabat.
991

992 Sealy J, Armstrong R (1995) Beyond lifetime averages: tracing life histories through isotopic analysis
993 of different calcified tissues from archaeological human skeletons. *Antiquity* 69, pp 290-300.
994

995 Shirinov TS (2002) Die frühurbane Kultur der Bronzezeit im südlichen Mittelasien. Die vorgeschicht-
996 liche Siedlung von Dzharkutan. *AMIT* 34, pp 1-170.
997

998 Sjögren KG, Price TD (2012) A complex Neolithic economy: isotope evidence for the circulation of
999 cattle and sheep in the TRB of western Sweden. *Journal of Archaeological Science* 40 (1), pp
1000 690-704.

- 1001
1002 Slovak NM, Paytan A (2011) Applications of Sr isotopes in archaeology. In: Baskaran M (ed) Handbook
1003 of Environmental Isotope Geochemistry. Advances in Isotope Geochemistry. Springer-Verlag
1004 Berlin, pp 743–768. https://doi.org/10.1007/978-3-642-10637-8_2
1005
- 1006 Spengler RN, Cerasetti B, Tengberg M, Cattani M, Rouse LM (2014a) Agriculturalists and pastoralists:
1007 Bronze Age economy of the Murghab alluvial fan, southern Central Asia. *Veget Hist*
1008 *Archaeobot* 23. <https://doi.org/10.1007/s00334-014-0448-0>
1009
- 1010 Spengler RN, Frachetti MD, Doumani P, Rouse LM, Cerasetti B, Bullion E, Mar'yashev A (2014b) Early
1011 agriculture and crop transmission among Bronze Age mobile pastoralists of Central Eurasia.
1012 *Proc R Soc B* 281:20133382. <http://dx.doi.org/10.1098/rspb.2013.3382>
1013
- 1014 Stammeier JA, Hippler D, Nebel O, Leis A, Grengg C, Mittermayr F, Kasemann SA, Dietzel M (2019)
1015 Radiogenic Sr and Stable C and O Isotopes Across Precambrian-Cambrian Transition in
1016 Marine Carbonatic Phosphorites of Malý Karatau (Kazakhstan) - Implications for Paleo-
1017 environmental Change. *Geochemistry, Geophysics, Geosystems* 20(1), pp 3-23.
1018 <https://doi.org/10.1029/2018GC007767>
1019
- 1020 Styring AK, Evans JA, Nitsch EK, Lee-Thorp JA, Bogaard A (2019) Revisiting the Potential of carbonized
1021 grain to preserve biogenic ⁸⁷Sr/⁸⁶Sr signatures within the burial environment.
1022 *Archaeometry* 61/1, pp 179-193. <https://doi.org/10.1111/arcm.12398>
1023
- 1024 Tengberg M, Daujat J, Mashkour M, Decaix A, Amiri S, Sheikhi S, Debue K, Berthon R, Lhuillier J,
1025 Bendezu-Sarmiento J (2020). Environment and Subsistence Economies at Iron Age Ulug-depe,
1026 South-eastern Turkmenistan: First Results from the Archaeozoological and Archaeobotanical
1027 Studies. In: Lhuillier L (ed) *Archaeology of Central Asia during the first millennium BC, from*
1028 *the beginning of the Iron Age to the Hellenistic period. Proceedings of the workshop held at*
1029 *10th International Congress on the Archaeology of the Ancient Near East, OREA series,*
1030 *Vienna, Austrian Academy of Sciences press.*
1031
- 1032 Tengberg M (2013) Économies végétales et environnements en Asie centrale du Néolithique à
1033 l'époque sassanide : la contribution des disciplines archéobotaniques. In: Bendezu-Sarmiento
1034 J (ed) *L'archéologie française en Asie centrale. Nouvelles recherches et enjeux socioculturels,*
1035 *Cahiers d'Asie Centrale* 21/22, pp 545-558.
1036
- 1037 Teufer M (2018) Der Baktro-Margianische Archäologische Komplex und die Oxus-Zivilisation. In:
1038 Wemhoff W, Nawroth M, Weiss RM, Wiczorek A (eds) *Margiana. Ein Königreich der*
1039 *Bronzezeit in Turkmenistan* Petersberg, Michael Imhof Verlag, Petersberg, pp 75-81.
1040
- 1041 Teufer M (2015) Spätbronzezeitliche Grabfunde aus Nordbaktrien und benachbarten Regionen.
1042 *Studien zur Chronologie zwischen Aralsee und Persischem Golf. AIT* 13.
1043
- 1044 Teufer M (2014) Bronzezeitliche und früheisenzeitliche Fundplätze im Jach-Su-Tal, Tadschikistan. In:
1045 Hansen S (ed) *Aktuelle Forschungen in Eurasien. Deutsches Archäologisches Institut,*
1046 *Eurastien-Abteilung, Berlin, pp 92-93.*
1047
- 1048 Teufer M, Vinogradova N, Kutimov J (2014) Der Übergang von der Spätbronze- zur Früheisenzeit in
1049 Mittelasien. *Das Altertum* 59, pp 109-148.
1050
- 1051 Teufer M, Vinogradova N (2010) Das Gräberfeld von Gelot. In: Boroffka N, Hansen S (eds)
1052 *Archäologische Forschungen in Kasachstan, Tadschikistan und Usbekistan. Deutsches*

- 1053 Archäologisches Institut, Eurasien Abteilung, Berlin, pp 28-31.
 1054
 1055 Thomalsky J, Bräutigam B, Karaucak M, Kraus S (2013). Early Mining and metal production in
 1056 Afghanistan: The first year of investigations. *Archäologische Mitteilungen aus Iran und Turan*
 1057 45, pp 199–230.
 1058
 1059 Tütken T (2003) Die Bedeutung der Knochenfrühdigenese für die Erhaltungsfähigkeit in vivo
 1060 erworbener Element- und Isotopenzusammensetzungen in fossilen Knochen. Dissertation zur
 1061 Erlangung des Grades eines Doktors der Naturwissenschaften der Geowissenschaftlichen
 1062 Fakultät der Eberhard-Karls-Universität Tübingen.
 1063
 1064 Tütken T (2010) Die Isotopenanalyse fossiler Skelettreste – Bestimmung der Herkunft und Mobilität
 1065 von Menschen und Tieren. Tagungsband des 2. Mitteldeutschen Archäologentages in Halle
 1066 (Saale): Anthropologie, Isotopie und DNA – biographische Annäherung an namenlose
 1067 vorgeschichtliche Skelette? Tagungen des Landesmuseums für Vorgeschichte Halle (Saale) 3,
 1068 pp 33–51.
 1069
 1070 Ventresca Miller AR (2018) Modeling modern surface water $\delta^{18}O$ to explore prehistoric human
 1071 mobility. In: Miller A, Makarewicz C (eds.) *Isotopic investigations of pastoralism in prehistory*,
 1072 Routledge, London, pp 41-56.
 1073
 1074 Ventresca Miller AR, Makarewicz CA (2018) *Isotopic investigations of pastoralism in prehistory.*
 1075 *Themes in Contemporary Archaeology Vol 4*, European Association of Archaeology,
 1076 Routledge.
 1077
 1078 Ventresca Miller AR, Winter-Schuh C, Usmanova ER, Logvin A, Shevnina I, Makarewicz CA (2017)
 1079 Pastoralist Mobility in Bronze Age Landscapes of Northern Kazakhstan: $87Sr/86Sr$ and $\delta^{18}O$
 1080 Analyses of Human Dentition from Bestamak and Lisakovsk. *Environmental Archaeology*.
 1081 <https://doi.org/10.1080/14614103.2017.1390031>
 1082
 1083 Vinogradova NM (2021). The formation of the Oxus Civilization/BMAC in southwestern Tajikistan, in:
 1084 B Lyonnet, N Dubova (eds.) *The World of the Oxus Civilization*, Routledge, New York/London,
 1085 635–664.
 1086
 1087 Vinogradova NM, Kuz'mina EE (1996) Contacts Between the Steppe and Agricultural Tribes of Central
 1088 Asia in the Bronze Age. *Anthropology & Archeology of Eurasia* 34(4), pp 29-54.
 1089 <https://doi.org/10.2753/AAE1061-1959340429>
 1090
 1091 Vinogradova NM, Kutimov YG (2018) Погребальные памятники эпохи бронзы в Южном
 1092 Таджикистане (могильники Гелота и Дарнайчи) / Институт востоковедения (Burial Sites
 1093 of the Bronze Age in Southern Tajikistan -Gelot and Darnay Chi necropolises-). Russian
 1094 Academy of Sciences; Institute for the History of Material Culture, Institute of Oriental
 1095 Studies. <https://doi.org/10.31600/978-5-89282-843-7>
 1096
 1097 Wilkinson TC (2014) *Tying the Threads of Eurasia. Trans-regional Routes and Material Flows in*
 1098 *Transcaucasia, Eastern Anatolia and Western Central Asia, c. 3000-1500 BC*. Sidestone Press,
 1099 Leiden.
 1100
 1101 White CD, Longstaffe FJ, Law KR (2004) Exploring the Effects of Environment, Physiology and Diet on
 1102 Oxygen Isotope Ratios in Ancient Nubian Bones and Teeth. *JAS* 31(2), pp 233–250.
 1103 <https://doi.org/10.1016/j.jas.2003.08.007>
 1104
 1105 White CD, Spence MW, Stuart-Williams HLQ, Schwarcz HP (1998) Oxygen isotopes and the

1106 identification of geographical origins: The Valley of Oaxaca versus the Valley of Teotihuacan.
1107 JAS 25(7), pp 643-655.
1108
1109 Zheng R, Lei Wu Y, Wu X, Li F, Niu G (2011) Geochemical characteristics of Callovian—Oxfordian
1110 carbonates in Samandeppe gas field, Amu Darya Basin, Turkmenistan. Pet Sci 8, pp 371-381.
1111 <https://doi.org/10.1007/s12182-011-0155-8>
1112