

# The big city as a refuge ?

Representations of male homophobia on a regional scale in  
the Hauts-de-France

Théophile Plouvier, PhD Student in geography

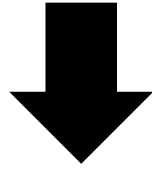
Littoral Côte d'Opale University

Territoires, Villes, Environnement et Société (TVES, EA 4477)

[theophile.plouvier@etu.univ-littoral.fr](mailto:theophile.plouvier@etu.univ-littoral.fr)



# The gay culture : An urban phenomenon ?



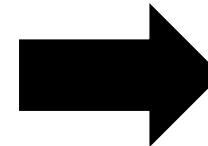
**Representations of the peripheries  
as unwelcoming**



*Tv shows*



*Music*



**Migration to the big city as an  
injunction for the well-being of  
homosexual people**

- 1 Mapping homosexual spatialities at a regional scale
- 2 Exploring the suitability of the urban/rural dichotomy in regard of homosexual lives

## How ?

### **Identifying places of homosexual practices**

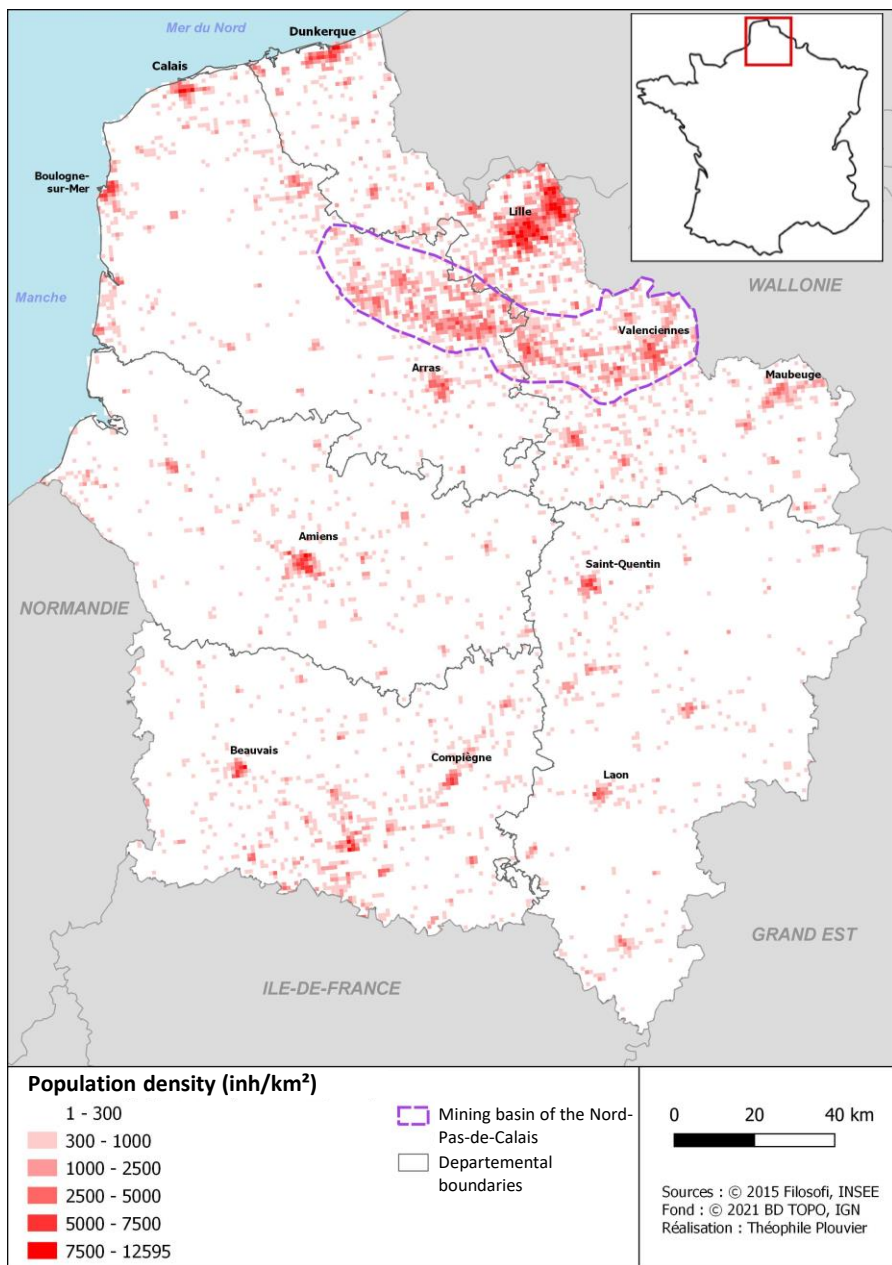
⇒ Commercial venues, associations, cruising spots, events

### **Investigating the individual spatial practices and representations of homosexual identities and homophobia**

⇒ Quantitative and qualitative survey through local universities, LGBT+ structures and social medias

↳ 717 responses, 16 interviews

# Study area : The Hauts-de-France region

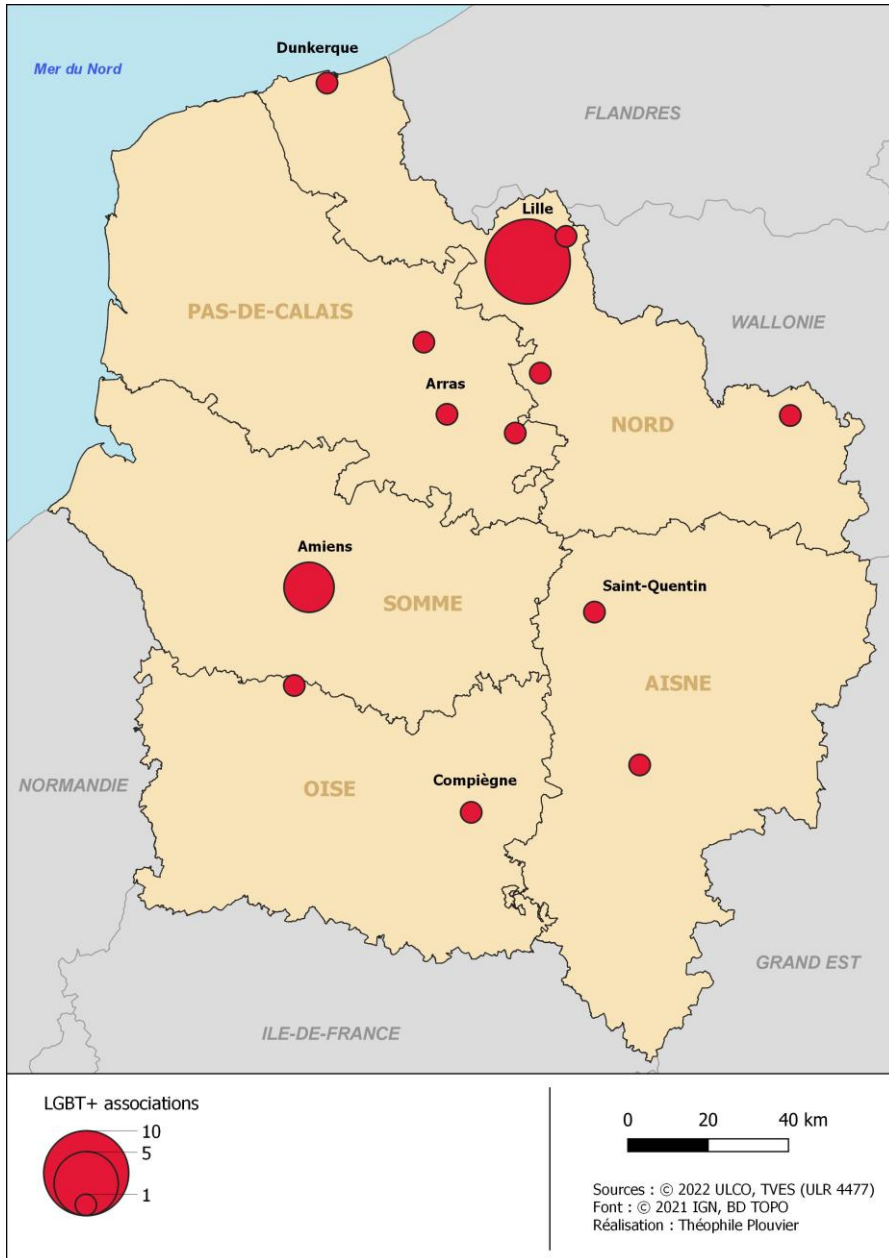


**Total number of inhabitants : 6 millions**  
**Main metropolis : Lille (1,1 millions inh)**

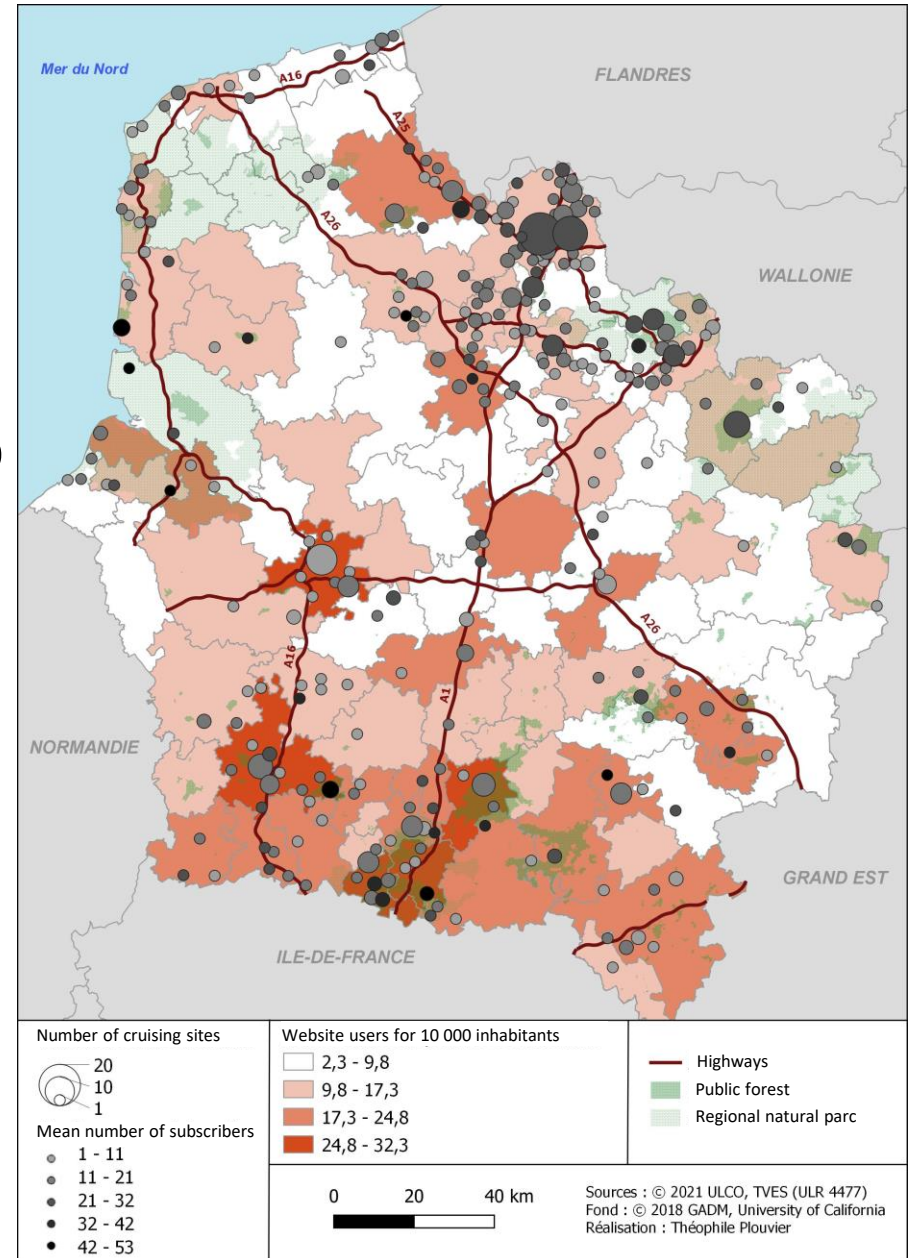
Socio-economic indicators (2019)	Hauts-de-France	France
Poverty rate(%)	17,6	14,5
Median of annual incomes (€)	20 360	21 930
Unemployment rate (%)	16,4	12,9
Working-class population(%)	24,1	19,7
Higher professions population (%)	14,2	18,4
Undergratuated population (%)	25,7	21,4

# Results : Mapping homosexual places

## LGBT+ associations



## Public cruising sites



# Results : Representations of « homophobia »

## A flexible stigma...

Type of spaces \ « Coming-out » score	0	1	2	3
Rural	9%	8%	26%	57%
Urban intermediate density	6%	13%	30%	51%
Urban high density	6%	12%	24%	58%

N = 717

**0** : homosexuality unknown to all



**3** : homosexuality told to **close family, friends and colleagues**

## ...and an exposition to homophobia not linked to the degree of urbanity

Type of spaces \ Victimization	Very low	Low	High	Very high
Rural	28%	23%	25%	24%
Urban intermediate density	23%	21%	32%	26%
Urban high density	24%	26%	24%	26%

N = 717

## Results : Frequenting the « gay scene »

Have already frequented :	Gay Bar	Gay Club
Municipality size		
Less than 2 000 inh	37%	25%
2 000 to 10 000 inh	31%	25%
10 000 to 30 000 inh	36%	31%
30 000 to 50 000 inh	40%	31%
50 000 to 100 000 inh	39%	32%
More than 100 000 inh	<b>59%</b>	<b>41%</b>

“I have to say that in Saint-Quentin, I often see only two persons I know from my work. A literature teacher and a teacher's assistant. We hardly see anyone else here. In general, I usually go out with very few people at all.”

Teacher, 33 yo, lives in Saint-Quentin (55k inh)

### Why have you never frequented those places ?

N = 279

**35%** Not attracted

**12%** No opportunities (no friends to go with, barely adult)

**11%** Don't fit in (don't go to bars and clubs, even the straight ones ; low interest for places of high sociability)

**10%** Too community-based (don't like community places)

...

...

**6%** Distance (no such places around the place of living)



- ⇒ Considering homosexualities from the prism of social practices instead of identities seems to be a suitable way to limit the metropolitan bias
- ⇒ No links between urbanity and | homophobic victimation  
| openness about homosexuality
- ⇒ The gay identity : only available in big cities ?

**Thank you for your attention !**

Théophile Plouvier, PhD Student in geography

Littoral Côte d'Opale University

Territoires, Villes, Environnement et Société (TVES, EA 4477)

[theophile.plouvier@etu.univ-littoral.fr](mailto:theophile.plouvier@etu.univ-littoral.fr)

