



**HAL**  
open science

## Investigation of the stratigraphic and chemical relationships between Bradbury and Siccar Point lithostratigraphic groups in Gale crater, Mars

Laetitia Le Deit, Gwénaél Caravaca, Nicolas Mangold, Stéphane Le Mouélic, Erwin Dehouck, Candice C Bedford, Roger C Wiens, Jeffrey R Johnson, Olivier Gasnault, Olivier Forni, et al.

### ► To cite this version:

Laetitia Le Deit, Gwénaél Caravaca, Nicolas Mangold, Stéphane Le Mouélic, Erwin Dehouck, et al.. Investigation of the stratigraphic and chemical relationships between Bradbury and Siccar Point lithostratigraphic groups in Gale crater, Mars. Europlanet Science Congress 2022, Europlanet, Sep 2022, Granada, Spain. pp.EPSC2022-508, 10.5194/epsc2022-508 . hal-03842431

**HAL Id: hal-03842431**

**<https://hal.science/hal-03842431v1>**

Submitted on 7 Nov 2022

**HAL** is a multi-disciplinary open access archive for the deposit and dissemination of scientific research documents, whether they are published or not. The documents may come from teaching and research institutions in France or abroad, or from public or private research centers.

L'archive ouverte pluridisciplinaire **HAL**, est destinée au dépôt et à la diffusion de documents scientifiques de niveau recherche, publiés ou non, émanant des établissements d'enseignement et de recherche français ou étrangers, des laboratoires publics ou privés.



Distributed under a Creative Commons Attribution 4.0 International License



## Investigation of the stratigraphic and chemical relationships between Bradbury and Siccar Point lithostratigraphic groups in Gale crater, Mars

Laetitia Le Deit<sup>1</sup>, Gwénaél Caravaca<sup>2</sup>, Nicolas Mangold<sup>1</sup>, Stéphane Le Mouélic<sup>1</sup>, Erwin Dehouck<sup>3</sup>, Candice C. Bedford<sup>4</sup>, Roger C. Wiens<sup>5,6</sup>, Jeffrey R. Johnson<sup>7</sup>, Olivier Gasnault<sup>2</sup>, Olivier Forni<sup>2</sup>, and Nina Lanza<sup>6</sup>

<sup>1</sup>Laboratoire de Planétologie et Géosciences (LPG), Nantes Université, CNRS UMR 6112, France ([laetitia.ledeit@univ-nantes.fr](mailto:laetitia.ledeit@univ-nantes.fr))

<sup>2</sup>Institut de Recherche en Astrophysique et Planétologie, Université de Toulouse, CNRS, CNES, France

<sup>3</sup>Univ Lyon, UCBL, ENSL, UJM, CNRS, LGL-TPE, F-69622, Villeurbanne, France

<sup>4</sup>Lunar and Planetary Institute, USRA, Houston, TX, USA and NASA Johnson Space Center, Houston TX, USA

<sup>5</sup>Purdue University, USA

<sup>6</sup>LANL, Los Alamos, USA

<sup>7</sup>Johns Hopkins University Applied Physics Laboratory, Laurel, MD 20723-6005, USA

Over the past 10 years, the Mars Science Laboratory (MSL) rover *Curiosity* has been investigating the plains of Aeolis Palus and the lower reaches of Aeolis Mons (informally known as Mount Sharp), a 5 km tall mound of sedimentary rocks in Gale crater (*Figure 1*). After traversing 27 km and nearly 600 m of vertical stratigraphy, three lithostratigraphic groups have been identified: Bradbury, Mount Sharp, and Siccar Point (SP). The Bradbury group consists of fluvial, deltaic, and lacustrine sedimentary rocks [1-2]. The Mt. Sharp group mainly consists of laminated mudstones with minor fluvial sandstones, interpreted as evidence of a long-lived lacustrine environment [1]. Locally, exposures of the Mt. Sharp group are unconformably overlain by aeolian cross-bedded sandstones of the SP group, interpreted to have deposited on an aeolian deflation surface [3].

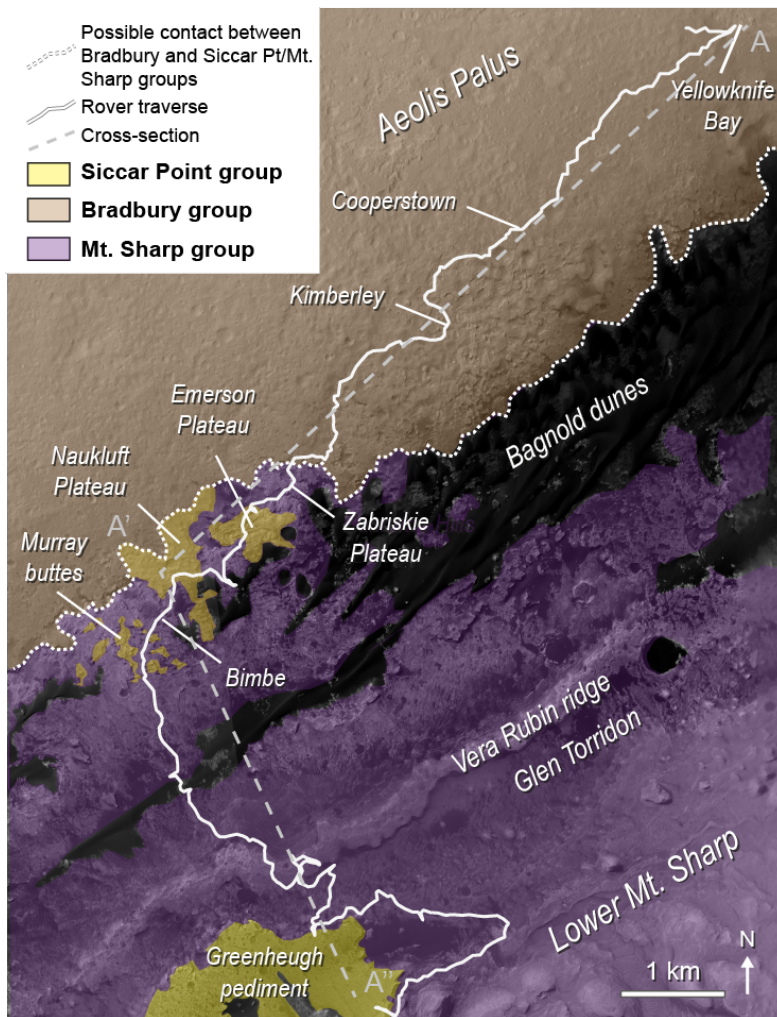


Figure 1: Location of the three lithostratigraphic groups exposed at Aeolis Palus and lower Mount Sharp and of the sedimentary rocks analyzed in this study.

While these three groups show evidence of deposition in specific environmental and climatic conditions, knowledge of their stratigraphic relationships is a key information to understand the evolution of environmental conditions in Gale. Yet, no clear stratigraphic contact has been observed at the boundary between the Bradbury and the Mt. Sharp groups. Because the mean dip of the Bradbury group is approximately horizontal, the MSL team suggested that the Bradbury group might be stratigraphically lower than the Mt. Sharp group, and therefore lower than the SP group [1]. Nonetheless, orbital analyses of the region suggested that capping strata of the Bradbury group could be part of the SP group [4]. Chemical data from the ChemCam and APXS instrument suites of Bradbury and SP group rocks have recently shown that both groups have similar compositions and possibly similar sediment sources [5-8]. In this study, we aim to reappraise the stratigraphic and chemical relationships between the Bradbury and SP groups using Mastcam [9-10] and ChemCam data [11-12] to characterize the evolution of Gale's ancient environment.

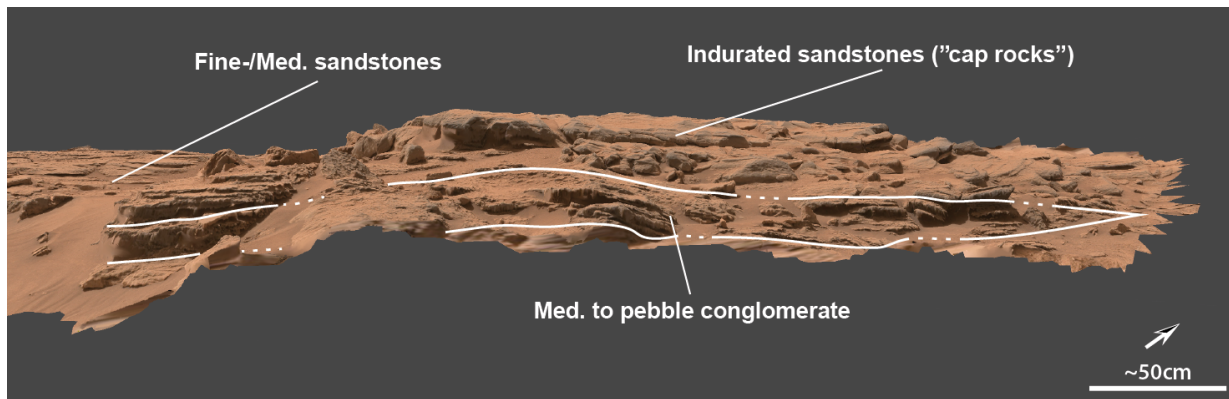


Figure 2: “Dog’s eye” view of the Zabriskie Plateau DOM, highlighting the lens-shaped interval of Bradbury group conglomerates cropping out at the same topographic level than fine-grained Siccar Point group sandstones. White line denotes inferred contact between both units, as no marked transition is observed.

### Lithostratigraphy of Zabriskie Plateau

One of the best candidates to assess the potential contact between Bradbury and SP group rocks is located at the Zabriskie Plateau outcrop in the Pahrump Hills area (Figure 1). To better appreciate the facies and 3D geometry of the contacts, this outcrop has been reconstructed as a Digital Outcrop Model (Figure 2, <https://skfb.ly/o9ZAq>) [13]. In this model, we observe that most of the outcrop is composed of fine to medium-grained sandstones, arranged in dm- to meter-scale cross-stratifications, similar to some of the aeolian facies of the SP group [3]. These sandstones exist as “capping rocks” similar to previously described examples [4], suggesting that they are locally well-cemented on the topmost meter. Near the base of the DOM, we observe a meter-scale, ~30-cm thick, cross-stratified lens-shaped interval of coarser medium to pebble conglomerate. This level represents deposition under energetic aqueous conditions to transport clasts up to the pebble size, more likely to pertain to a fluvial channel. Interestingly, this conglomerate interval is at similar elevation (within one meter) to the surrounding sandstones, with no apparent unconformity, likely evidencing a conformable emplacement of this level within the finer sandstone succession. This would argue that the conglomerate level was deposited synchronously with the finer-grained sandstones during the same depositional event.

### Chemical composition of Bradbury and Siccar Point groups

The average compositions of Bradbury and SP group rocks are overall quite similar (Table 1), and clearly distinct from Mount Sharp group rocks (Figures 3 and 4). By analyzing the rock compositions of Bradbury and SP groups, we sorted them into five major chemical groups, which are, in order of increasing average  $K_2O/Na_2O$  ratio and average  $K_2O$  content for groups 1 to 4: group 1 has a basaltic composition; group 2 has low  $SiO_2$ , intermediate  $TiO_2$ , high  $FeO_T$  and  $Na_2O$  contents; group 3 has low  $CaO$ , high  $TiO_2$ ,  $FeO_T$ , and  $K_2O$  contents; group 4 has low  $TiO_2$  and  $Al_2O_3$ , and very high  $K_2O$  contents; and group 5 has a composition close to group 1 with higher  $SiO_2$  and alkali contents (Table 1, Figure 3). Overall, the  $MgO$  and  $Al_2O_3$  contents are quite variable. The composition of these rocks suggests mixing between mafic minerals and feldspars, including alkali feldspars in various proportions (Figure 4). Interestingly, both Bradbury and SP rocks occur in the first three chemical groups, which suggests similar source rocks for both groups of at least two types: a relatively low-potassium basaltic rock and a potassic-rich rock. The relative abundance of potassic-rich source rock in the mixture is interpreted to increase from group 1 to group 4. Besides, Bradbury and SP group rocks have a low Chemical Index of Alteration (CIA), which is indicative of limited chemical weathering (Figure 4).

Table 1: Average major element composition of Bradbury and Siccar Point group rocks for major localities as seen by ChemCam data in wt%. Standard deviation (SD) for each element and locality is indicated. Values are highlighted for each element from the lowest value (green) to the highest value (red) for the groups 1 to 4. YKB corresponds to Yellowknife Bay, and GP to Greenheugh pediment.

Chemical group	Lithostratigraphic group	Formation / Outcrop	Member / Outcrop / interval / unit / locality	Number of points	SiO <sub>2</sub>	SD	TiO <sub>2</sub>	SD	Al <sub>2</sub> O <sub>3</sub>	SD	FeO <sub>T</sub>	SD	MgO	SD	CaO	SD	Na <sub>2</sub> O	SD	K <sub>2</sub> O	SD	K <sub>2</sub> O / Na <sub>2</sub> O	SD
1	Bradbury	YKB	Gillepsie Lake	73	47.9	1.3	1.1	0.2	10.0	1.7	21.4	1.3	10.4	2.4	6.2	2.4	2.7	0.6	0.4	0.2	0.14	0.06
	Siccar Point	Stimson	GP - Gleann Beag	122	48.6	2.1	1.0	0.1	10.8	2.4	20.9	2.9	8.5	3.1	6.6	2.4	3.1	0.7	0.5	0.4	0.16	0.11
	Bradbury	YKB	Sheepbed	419	49.1	1.3	1.0	0.2	10.4	1.4	20.5	1.2	9.7	2.6	5.7	1.9	3.0	0.4	0.5	0.2	0.17	0.05
	Siccar Point	Stimson	Naukluft Plateau	275	48.3	2.6	0.9	0.2	12.6	2.8	20.4	3.0	7.5	2.8	6.4	1.7	3.3	0.7	0.6	0.4	0.17	0.11
	Siccar Point	Stimson	Emerson Plateau	295	48.2	2.9	1.1	0.3	12.0	2.8	20.4	3.0	8.3	3.1	6.5	2.5	3.0	0.7	0.6	0.4	0.18	0.13
2	Siccar Point	Stimson	GP - Ladder	25	46.7	1.8	1.0	0.1	9.6	2.3	23.2	3.0	11.0	3.6	5.2	1.8	2.8	0.5	0.6	0.2	0.21	0.05
	Siccar Point	Stimson	GP - Edinburgh	241	47.4	2.4	1.0	0.2	10.1	2.5	23.2	3.8	9.2	2.9	5.2	2.1	3.1	0.7	0.7	0.3	0.21	0.07
	Bradbury	YKB	Glenelg - Point Lake	119	46.8	3.6	1.3	0.3	11.4	2.9	23.3	4.7	7.0	2.5	6.0	2.2	3.2	1.0	0.9	0.4	0.26	0.08
3	Bradbury	YKB	Glenelg - Shaler	166	46.5	3.7	1.2	0.4	10.8	2.8	23.4	4.8	8.4	3.2	5.9	2.5	2.9	0.8	0.9	0.5	0.29	0.13
	Siccar Point	Stimson	Western Butte cap rock (floats)	83	45.7	2.3	1.5	0.4	9.7	1.5	25.7	3.2	8.0	2.7	5.4	2.2	2.9	0.5	1.2	0.5	0.39	0.13
	Siccar Point	Stimson	GP - Gator Back	66	47.8	2.5	1.3	0.3	9.6	2.4	22.9	3.6	9.0	3.1	5.4	2.1	2.7	0.9	1.2	0.5	0.48	0.24
	Bradbury	Cooperstown	Pine Plains	46	46.6	1.5	1.4	0.3	11.1	3.3	23.2	3.0	8.4	3.4	5.4	1.5	2.5	0.3	1.4	0.7	0.56	0.22
	Bradbury	Cooperstown	Rensselaer	21	47.1	1.7	1.2	0.2	9.5	1.7	24.3	1.6	9.1	2.1	5.3	1.4	2.2	0.2	1.2	0.3	0.56	0.10
4	Bradbury	Kimberley	Beagle (float)	16	46.7	1.8	1.4	0.3	10.5	2.7	22.6	3.0	9.5	2.4	5.0	1.9	2.6	1.3	1.7	0.4	0.69	0.19
	Bradbury	Kimberley	Liga	121	48.0	5.0	0.9	0.2	10.7	3.6	21.7	8.3	7.8	3.7	6.1	2.5	2.6	1.0	2.4	1.7	1.04	1.11
	Bradbury	Kimberley	Square Top	65	44.9	2.6	1.0	0.1	8.9	1.3	26.5	4.1	8.1	3.0	6.2	1.6	2.0	0.3	2.3	0.7	1.18	0.40
	Bradbury	Kimberley	Dillinger	138	48.6	1.7	0.9	0.1	9.2	1.2	20.3	2.1	10.0	1.5	5.7	1.7	1.6	0.5	3.6	0.8	2.41	0.64
	Bradbury	Kimberley	Mt. Remarkable	19	46.0	1.5	0.8	0.1	11.1	0.8	20.2	2.2	8.8	1.0	6.2	1.4	1.7	0.2	5.2	0.6	3.09	0.44
5	Siccar Point (?)	Bimbe (floats)		116	51.7	6.1	1.1	0.4	10.5	3.3	20.0	4.4	6.0	3.6	5.9	2.5	3.9	1.2	0.9	0.6	0.24	0.15

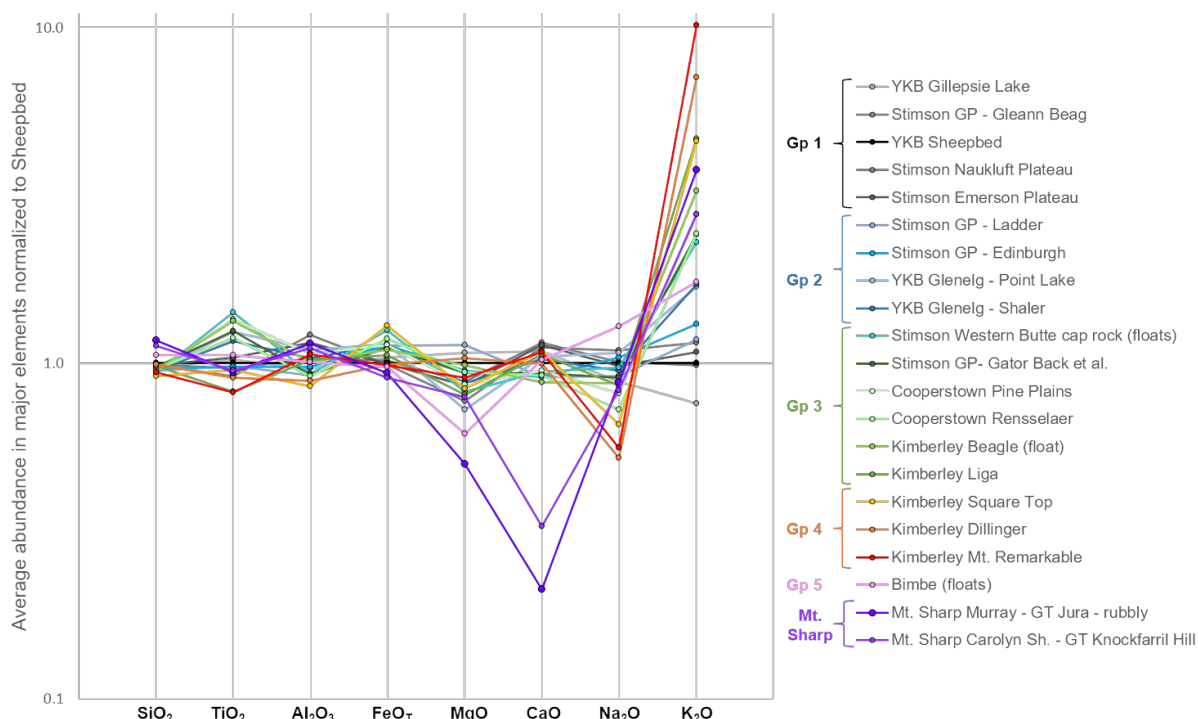


Figure 3: Average major element composition for major localities in Bradbury, SP, and Mt. Sharp group rocks analyzed by ChemCam normalized to Sheepbed composition. GP corresponds to Greenheugh pediment, and GT to Glen Torridon.

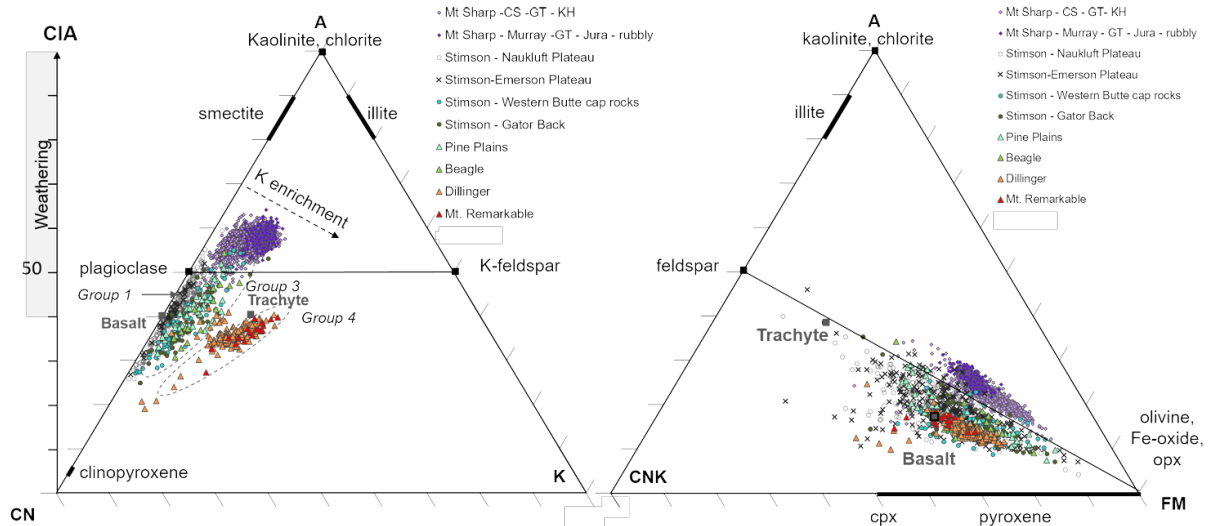


Figure 4 :  $Al_2O_3 - CaO+Na_2O - K_2O$  and  $Al_2O_3 - CaO+Na_2O+K_2O - Fe_2O_3+MgO$  diagrams for rocks of the three lithostratigraphic groups. Groups 2 and 5 are not shown for clarity. CIA corresponds to the Chemical Index of Alteration, CS to the Carolyn Shoemaker formation, GT to Glen Torridon, and KH to Knockfarill Hills.

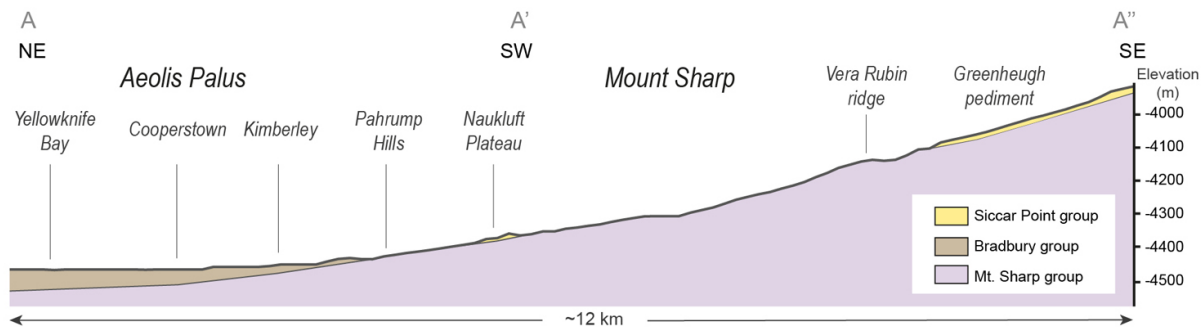


Figure 5: Schematic cross-section along Aeolis Palus and lower Mount Sharp. Location is indicated in Figure 1.

### Conclusion

3D observations in the Pahrump Hills area suggest that Bradbury and Siccar Point units are intermingled and synchronous in an environment allowing fluvial episodes to occasionally occur among a drier setting, as observed on Earth [14]. This is consistent with the chemical compositions of Bradbury and Siccar Point groups which suggest similar source rocks in different relative abundances. This relationship implies that the Bradbury group could be younger than Mount Sharp group (Figure 5). To summarize, these observations are in favor of a common origin for both Bradbury and Siccar Point as a single clastic group, representing a temporal evolution from clement conditions during the deposition of Mount Sharp group to a colder and drier environment with still transient episodes of fluvial activity during the deposition of Bradbury and Siccar Point groups.

[1] Grotzinger et al., *Science* 2015. [2] Mangold et al., *JGR* 2016. [3] Banham et al., *Sedimentology* 2018. [4] Williams et al., *Icarus* 2018. [5] Bedford et al., *Icarus* 2020. [6] Bedford et al., *JGR* 2022. [7] Thompson et al., *LPSC* 2022. [8] Thompson et al., this conference. [9] Malin et al., *LPSC* 2010. [10] Bell et al., *Earth and Space Science* 2017. [11] Wiens et al., *Space Sci Rev.* 2012. [12] Maurice et al., *Space Sci. Rev.* 2012. [13] Caravaca et al., *PSS* 2020. [14] Newell, *Marine and Petroleum Geology* 2001.