



HAL
open science

First detection of the malaria vector *Anopheles arabiensis* in Côte d'Ivoire: urbanization in question

F Fournet, Akre Adja, Kouassi Adou, Milossé Dahoui, Baba Coulibaly, Konan Assouho, Dounin Zoh, Moussa Koné, Aboubacar Koné, Koffi Niamien, et al.

► **To cite this version:**

F Fournet, Akre Adja, Kouassi Adou, Milossé Dahoui, Baba Coulibaly, et al.. First detection of the malaria vector *Anopheles arabiensis* in Côte d'Ivoire: urbanization in question. *Malaria Journal*, 2022, 21 (1), pp.275. 10.1186/s12936-022-04295-3 . hal-03841945

HAL Id: hal-03841945

<https://hal.science/hal-03841945>

Submitted on 7 Nov 2022

HAL is a multi-disciplinary open access archive for the deposit and dissemination of scientific research documents, whether they are published or not. The documents may come from teaching and research institutions in France or abroad, or from public or private research centers.

L'archive ouverte pluridisciplinaire **HAL**, est destinée au dépôt et à la diffusion de documents scientifiques de niveau recherche, publiés ou non, émanant des établissements d'enseignement et de recherche français ou étrangers, des laboratoires publics ou privés.

RESEARCH

Open Access



First detection of the malaria vector *Anopheles arabiensis* in Côte d'Ivoire: urbanization in question

Florence Fournet^{1,2,3*}, Akre M. Adja^{3,4}, Kouassi A. Adou^{1,3,5}, Milossé M. C. Dahoui^{1,3}, Baba Coulibaly³, Konan F. Assouho^{3,4}, Dounin D. Zoh^{3,4}, Moussa Koné², Aboubacar Koné³, Koffi L. Niamien³, Sylvie Cornelie¹, Emmanuel Tia² and Nicolas Moiroux¹

Abstract

Background: Previous studies have revealed high malaria transmission in Bouaké, Côte d'Ivoire. The sociopolitical crisis in the country and the resulting environmental changes have raised the need to update existing knowledge on mosquito vector species and malaria transmission.

Methods: Adult mosquitoes were caught using the human landing catch (HLC) sampling method in Bouaké. They were collected in six districts representative of the diversity in urban landscapes. Sampling points were selected along the water network crossing the city and monitored from 2020 to 2021 to detect the presence of anopheline larvae. PCR techniques were used to ascertain the species of the *Anopheles gambiae* complex, *Plasmodium falciparum* sporozoite infection in a subset of *Anopheles* vectors, and insecticide resistance mechanisms in *Anopheles arabiensis* only.

Results: A total of 4599 *Anopheles* mosquitoes were collected and then identified. *Anopheles gambiae* sensu lato (*s.l.*) made up the majority of the whole collection (99%) while *Anopheles funestus* (0.7%), *Anopheles ziemanni* (0.2%), *Anopheles pharoensis* (0.2%) represented the remaining proportion of collection. Among the *Anopheles gambiae* complex, three species were identified namely *An. gambiae* sensu stricto (45.9%), *Anopheles coluzzii* (52.2%), and *Anopheles arabiensis* (1.9%). The first two species had already been collected in Bouaké, however this is the first time that *An. arabiensis* is reported in Côte d'Ivoire. *Anopheles arabiensis* was also collected during the larval surveys in a similar proportion (1.1%) in the same areas as the adults.

Conclusions: This study detected the presence of *An. arabiensis* for the first time in Côte d'Ivoire. This species was found quite far from its usual geographic area and its expansion could be linked to the urbanization process. Although no *An. arabiensis* was found to be infected by *Plasmodium* sp., its role in malaria transmission in Bouaké has to be explored, particularly since its exophagic behaviour raises the issue of control measures and the use of insecticide-impregnated nets. The spread of this species in Côte d'Ivoire should be assessed through further research in additional towns in the country.

Keywords: *Anopheles arabiensis*, Bouaké, Côte d'Ivoire

Background

Malaria remains a major public health issue worldwide with 229 million cases and 409,000 deaths reported in 2019 [1]. In the same year, the sub-Saharan African region accounted for 94% of cases and deaths. In Côte

*Correspondence: florence.fournet@ird.fr

¹ MIVEGEC (Université de Montpellier, CNRS, IRD), Montpellier, France
Full list of author information is available at the end of the article



© The Author(s) 2022. **Open Access** This article is licensed under a Creative Commons Attribution 4.0 International License, which permits use, sharing, adaptation, distribution and reproduction in any medium or format, as long as you give appropriate credit to the original author(s) and the source, provide a link to the Creative Commons licence, and indicate if changes were made. The images or other third party material in this article are included in the article's Creative Commons licence, unless indicated otherwise in a credit line to the material. If material is not included in the article's Creative Commons licence and your intended use is not permitted by statutory regulation or exceeds the permitted use, you will need to obtain permission directly from the copyright holder. To view a copy of this licence, visit <http://creativecommons.org/licenses/by/4.0/>. The Creative Commons Public Domain Dedication waiver (<http://creativecommons.org/publicdomain/zero/1.0/>) applies to the data made available in this article, unless otherwise stated in a credit line to the data.

d'Ivoire, malaria is the leading cause of medical consultations, with over 5 million cases reported in 2019 [2].

Agricultural development can impact disease dynamics, particularly vector diseases by changing interactions between hosts and vectors as well as by altering vector composition [3]. In the past few years, urbanization has increased worldwide at a fast pace. The United Nations predicts that approximately 70% of the African population will be urban by 2050 [4]. In the early 2000s, medical entomologists thought that urbanization could reduce the burden of malaria because urban environments were considered unsuitable for most major malaria vectors [5, 6]. However, this assumption is now challenged by detailed studies [7]. Indeed, a large variety of *Anopheles* mosquito larval habitats are found in proximity to human dwellings and increase the risk of malaria transmission. These are due to fast-spreading urban or agriculture areas, the presence of standing water, the absence of drainage systems and the poor state of roads linked to unplanned urbanization. In addition, inadequate housing conditions have been recognized as risk factors in urban environments. Donnelly et al. [8] suggested taking these urban factors into account to implement adequate vector control strategies.

In Côte d'Ivoire, 41 *Anopheles* species have been identified to date [9]. Studies carried out in central Côte d'Ivoire by Dossou-Yovo et al. [10] report two major malaria vector species: *Anopheles gambiae* sensu lato (*s.l.*) and *Anopheles funestus*. Assouho et al. [11] showed that *Anopheles nili* is also frequently observed in central Côte d'Ivoire. In the west, Nzeyimana et al. [12] identified two malaria vector species: *An. gambiae* sensu stricto (*s.s.*) and *An. funestus*. According to Adja et al. [13], *An. nili* also plays a major role in malaria transmission in the southern and western forest areas of Côte d'Ivoire. Moreover, *Anopheles coustani*, *Anopheles ziemanni*, *Anopheles pharoensis*, *Anopheles welcomei*, *Anopheles obscurus* and *Anopheles moucheti* have also been recorded as secondary malaria vectors in the country [10, 14–16].

In Bouaké, the second largest city of Côte d'Ivoire, past and recent studies revealed the main presence of *An. gambiae s.l.* and more specifically *An. gambiae s.s.* and *An. coluzzii*, with *An. funestus*, *An. coustani*, *An. pharoensis*, *An. ziemanni*, *An. obscurus* and *An. welcomei* in low proportions (< 1%) [10, 16].

This study is part of research efforts whose objective is to analyse the impact of the urbanization process on malaria risk factors in Bouaké. The article aims to provide an update on the malaria vector composition in Bouaké.

Methods

Study site

The study took place in the city of Bouaké, in the central region of Côte d'Ivoire. The population of Bouaké was estimated to be approximately 540,000 people in 2014 [17]. However, this number is hardly reliable since the census was carried out at the end of a political crisis that occurred in the country between 2002 and 2012. The city spreads out on a plateau and includes a dense hydrographic network that divides in different neighbourhoods and allows both rice cultivation and market gardening in the lowlands. The rainy season runs from April to October, with a decrease in rainfall from July to August. The dry season begins in November and lasts five months. The average annual rainfall is 1200 mm. The average monthly temperatures vary from 24 °C in August to 28 °C in February.

Mosquito sampling

Adult sampling took place in the city of Bouaké, in six districts (Fig. 1), which were representative of the diversity in the urban landscape. Koko is an old central district. Air France is also an ancient urban district, although with higher house standing. Belleville is a recently urbanized district located in the northern part of the town, with a low level of equipment. Sossoribougou district is located near the centre of the city. It is an old irregular district that suffers from a lack of infrastructure. The Odiennekourani and N'Gattakro districts are populated areas along two inland valleys where rice fields and garden markets are intensively developed.

Adult mosquitoes were sampled from 06:00 PM to 08:00 AM, using the HLC technique.

In the districts of Koko, Air France 1 & 2, Belleville 3 and Sossoribougou, sampling was performed at three selected sites per district, both indoors and outdoors, for 2 consecutive nights in March 2019, at the beginning of the rainy season, in October 2019 at the end of the rainy season, and in February 2020 during the dry season (i.e., for a total of 144 nights of HLC sampling).

In Odiennekourani and N'Gattakro, monthly sampling was performed at two sites per district, for only one night, both indoors and outdoors, from February to December 2019, except in April and May 2019 (i.e., for a total of 72 nights of HLC sampling). Two larval surveys were carried out in October 2020 and April 2021. Concentric circles at intervals of 1500 m were plotted over the entire urban area and larval sampling points were selected at the intersections between circles and lowlands. Mosquito larval collections were performed in all potential larval habitats using the dipping method in a 100 m radius at all selected sites. The ecological context (e.g., turbidity, sunlight, type of cultivation, presence of

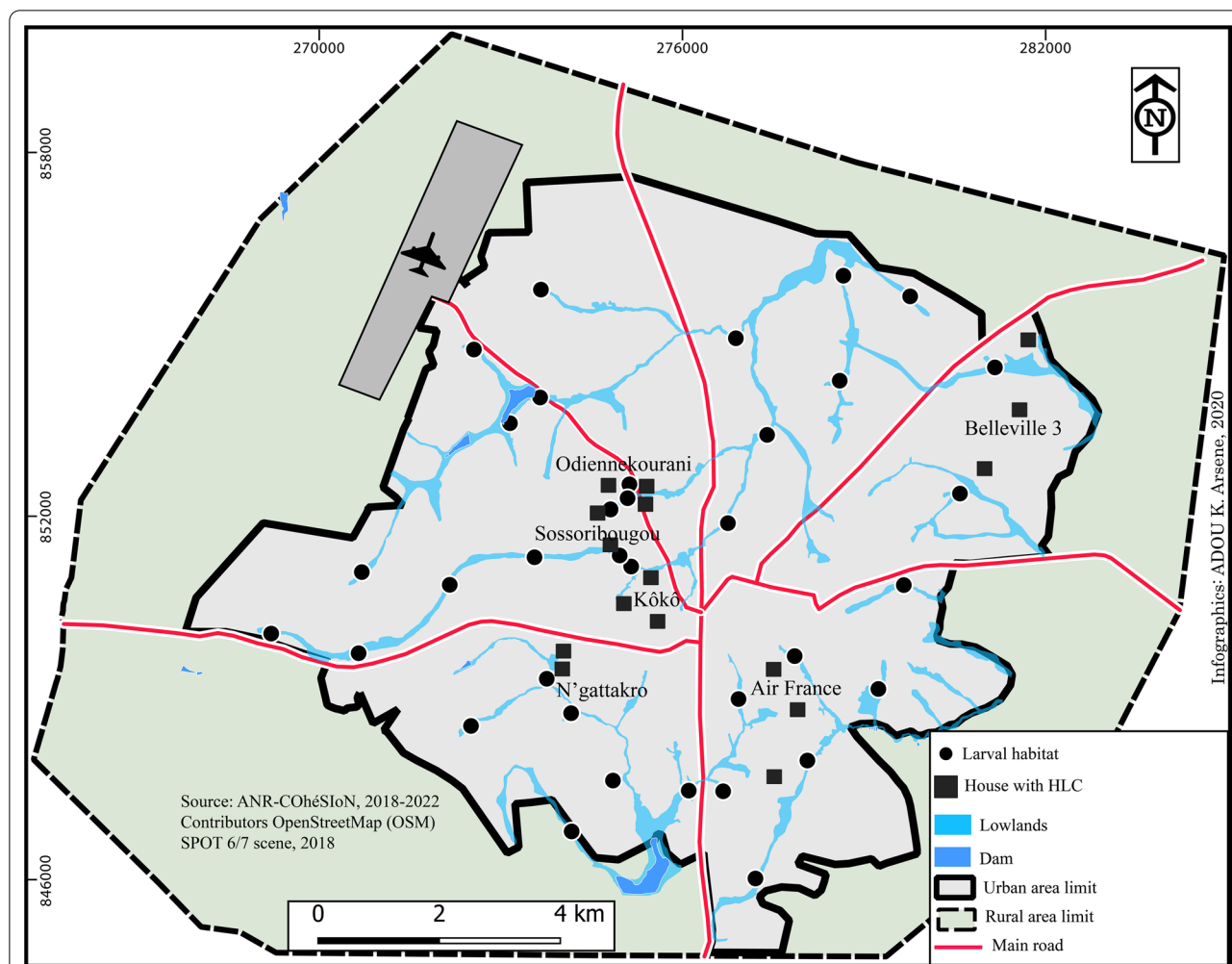


Fig. 1 Map of the city of Bouaké showing the sites for the HLC sampling technique and the larval survey

plants and predators) was recorded. The collected larvae were transferred to the insectary of the Institut Pierre Richet (IPR) for rearing.

Anopheles vector processing

Adult mosquitoes were identified morphologically using the Culicinae identification key of Mattingly [18] and the Anophelinae identification key of Gilles and Coetzee [19]. Only *Anopheles* vectors were individually preserved in Eppendorf tubes (1.5 ml) with silica gel.

All the adults reared from the larval surveys and a random subsample of adult *Anopheles* females from HLC were selected for molecular analysis. DNA extraction was performed from the head and thorax of each specimen following the procedure used by Cornel et al. [20]. The sibling species of the *An. gambiae* complex were identified by PCR using the protocols of Favia et al. [21] and Scott et al. [22]. *Anopheles arabiensis* were verified following the protocol described by Fanello et al. [23] to

confirm the results. All identified mosquitoes of the *An. gambiae* complex from HLC were tested for the presence of *Plasmodium falciparum* infection using qPCR [24]. Additional PCR assays for the detection of the *kdr west* (L1014F), *kdr-east* (L1014S) and *ace-1^R* (G119S) mutations, which confer resistance to insecticides, were performed on *An. arabiensis* specimens collected by HLC according to Bass et al. [25] and Bass et al. [26], respectively.

Results

Species composition and distribution

A total of 24,125 adult mosquitoes were collected in the six districts. Among these, 73.7% (n=17,786) were identified as *Culex quinquefasciatus* and 19.1% (n=4599) were identified as *An. gambiae s.l.* In addition, *An. funestus*, *An. pharoensis* and *An. ziemanni* were also collected but in very low proportions (<1%).

Mosquitoes belonging to the *An. gambiae* complex were identified as *An. gambiae* s.s. (n=1333; 46.0%), *An. coluzzii* (n=1,517; 52.3%) and *An. arabiensis* (n=48; 1.7%) (Table 1).

Table 1 Distribution of the species within the *Anopheles gambiae* complex collected by HLC in each surveyed district

District	<i>An. gambiae</i> s.s. N (%)	<i>An. coluzzii</i> N (%)	<i>An. arabiensis</i> N (%)	Total N (%)
Air France 1 & 2	267 (20.0)	24 (1.6)	0 (0)	291 (10.0)
Belleville 3	272 (20.4)	19 (1.3)	0 (0)	291 (10.0)
Koko	149 (11.2)	182 (12.0)	35 (72.9)	366 (12.6)
Sossoribougou	47 (3.5)	167 (11.0)	1 (2.1)	215 (7.4)
N’gattakro	371 (27.8)	863 (56.9)	0 (0)	1234 (42.6)
Odiennekourani	228 (17.1)	266 (17.5)	12 (25.0)	506(17.5)
Total	1333 (46.0)	1517 (52.3)	48 (1.7)	2898

An. arabiensis was found at the end of the rainy season (October 2019), except for one individual captured in March, at the beginning of the rainy season. It was identified only in the districts of Koko, Sossoribougou and Odiennekourani, in the western part of the city, around an inland valley that crosses these districts (Fig. 2).

Anopheles arabiensis was only found outdoors (48 individuals caught outdoors, i.e., 0.2 mosquito bite/man/n) and was significantly more active than *An. gambiae* s.s. and *An. coluzzii* during the second part of the night ($\text{Chi}^2 = 16.9$; $p = 0.0019$) (Table 2).

Plasmodium falciparum mosquito infection status

None of the 36 mosquitoes of the *An. arabiensis* species tested positive for *P. falciparum* infection. However, 11 (0.73%) *An. coluzzii* and 5 (0.38%) *An. gambiae* s.s. were positive for *P. falciparum* (Table 3).

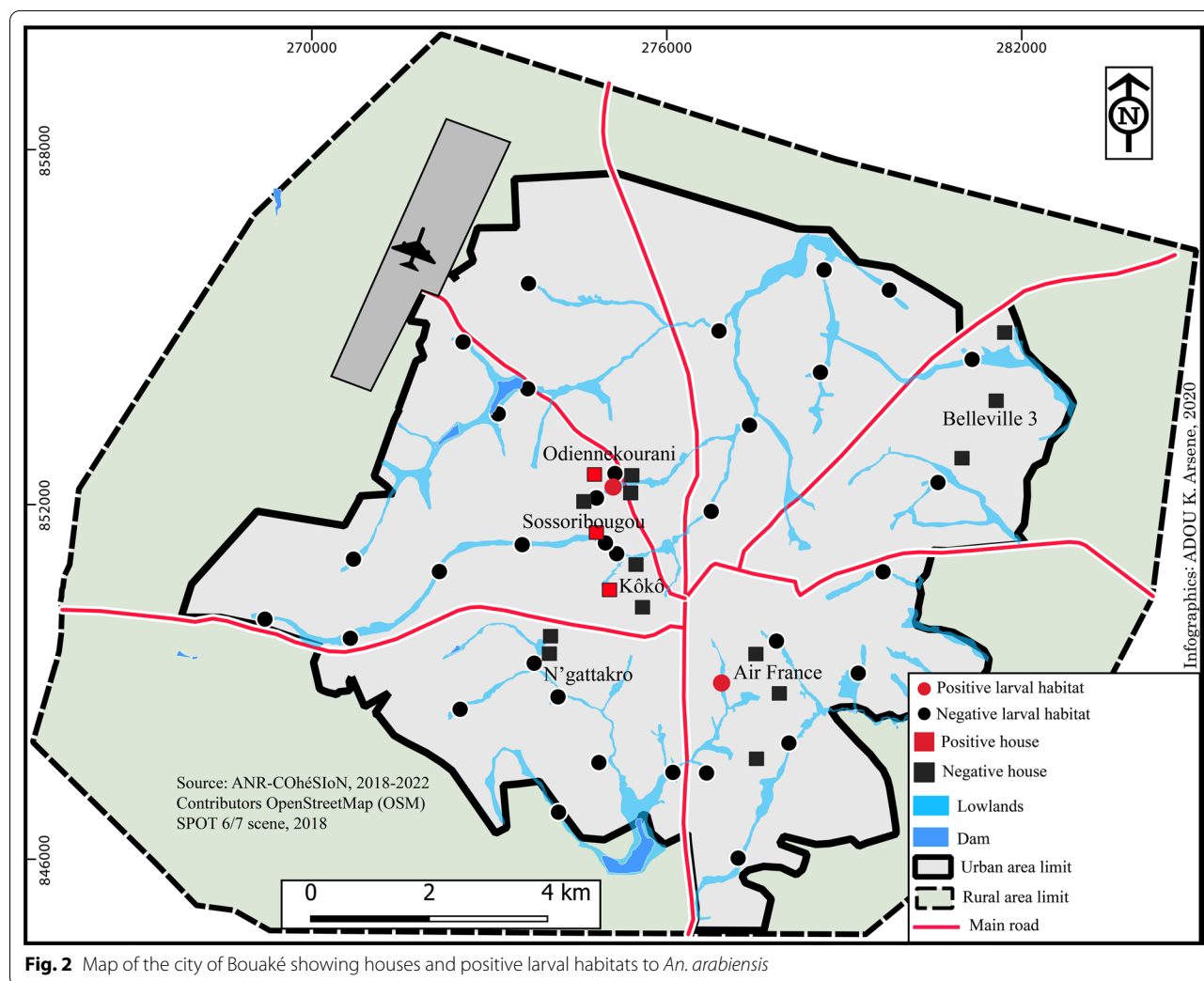


Fig. 2 Map of the city of Bouaké showing houses and positive larval habitats to *An. arabiensis*

Table 2 Percentage of *Anopheles gambiae* complex species by time

	<i>An. arabiensis</i>	<i>An. coluzzii</i>	<i>An. gambiae</i> s.s	Total
06:00 PM to 12:00 PM	10.4	26.2	26.7	26.1
12:00 PM to 06:00 AM	87.5	69.8	71.4	70.8
06:00 AM to 08:00 AM	2.1	4.0	1.9	3.0

Table 3 *Plasmodium falciparum* infection status of *An. gambiae* s.s. and *An. coluzzii*

	<i>An. gambiae</i> s.s		<i>An. coluzzii</i>	
	Tested	Infected	Tested	Infected
Air France	267	0	24	0
Belleville	272	0	19	0
Koko	148	1	178	1
Sossoribougou	47	1	167	2
Odiennekourani	228	0	266	1
N'Gattakro	371	3	863	7
	1333	5	1517	11

Detection of *kdr* mutation in *An. arabiensis*

The *kdr* West and East mutations were detected in 41 (85.4%) and 7 (17.1%) individuals, respectively, revealing an allelic frequency of 1 in both cases. None of the individuals carried the *ace-1^R* mutation.

***Anopheles arabiensis* larval habitats**

Potential larval habitats for *Anopheles* mosquitoes (i.e., larvae breeding grounds filled with water) were found at 35 and 40 sites (out of the 42 sampled sites) in October 2020 and April 2021, respectively. *Anopheles* larvae were collected in 9 of the 35 sites in October 2020, and then at 24 of the 40 sites in April 2021 (Table 4).

Anopheles larvae were found in 33 out of 75 sites (44%). Market gardening accounted for the most positive larval habitat both at the beginning (58.3%) and at the end of the rainy season (44.4%). In the rice fields, 33.3% of the larval habitats were positive at the end of the rainy season. In the early rainy season, positive samples were mostly found in the bush (20.8%) and in puddles (16.7%).

After identification *An. coluzzii* was predominant (60.6%) in the larval sampling (Table 5). Five *An. arabiensis*, and two hybrids of *An. gambiae* s.s. and *An. coluzzii* were found.

Anopheles arabiensis individuals were only found at the end of the rainy season in 2020, and at only two sites (Fig. 3). The first site was a watercourse in the Air France

Table 4 Different types of the larval habitats detected in Bouaké

	October 2020		April 2021	
	N	Positive n (%)	N	Positive n (%)
Garden market	8	4 (44.4)	20	14 (58.3)
Rice field	9	3 (33.3)	1	0 (0.0)
Puddle	1	1 (11.1)	5	4 (16.7)
Bush	11	0 (0.0)	12	5 (20.8)
Watercourse	6	1 (11.1)	2	1 (4.2)
Total	35	9 (25.7)	40	24 (52.5)

Table 5 Adult species composition after rearing

	October 2020 N (%)	April 2021 N (%)	Total N (%)
<i>An. gambiae</i> s.s	186 (39.6)	66 (34.2)	252 (38.0)
<i>An. coluzzii</i>	277 (58.9)	125 (64.8)	402 (60.6)
<i>An. arabiensis</i>	5 (1.1)	0	5 (0.8)
<i>An. obscurus</i>	2 (0.4)	0	2 (0.3)
<i>An. gambiae</i> M/S	0	2 (1.0)	2 (0.3)
Total	470 (70.9)	193 (29.1)	663 (100.0)

district (BS1, Fig. 3B) and the second was located in the lowland of Odiennekourani (BS36, Fig. 3A), near the house where adults were caught in October 2019.

Discussion

This study is the first to identify the malaria vector *An. arabiensis* in the city of Bouaké and in Côte d'Ivoire, both at the larval and adult stages. In West Africa, the typical distribution area of *An. arabiensis* was characterized by annual precipitation rates of less than 1000 mm [27, 28]. This area extends from the Atlantic coast in Senegal to the north of Cameroon. Although *An. arabiensis* is mostly found in rural areas, this species has been observed in urban environments to which it has well adapted. In Senegal, it can be found in the capital city, Dakar, where it was collected with *Anopheles melas* and *An. coluzzii* [29, 30].

The presence of *An. arabiensis* in cities has been dependent on its local adaptation to polluted breeding sites [31]. Moreover, environmental changes induced by urbanization (i.e., higher temperatures and lower relative humidity) are also expected to provide favourable environments to *An. arabiensis* outside its historical distribution area. In Bobo-Dioulasso, the second largest city of Burkina Faso, this species, which accounted for 3% of the *Anopheles* population in the 1980s [32], reached 8% in 2002 [33], and then over 90% more recently [34], although these rates vary according to the characteristics



Fig. 3 Pictures of the two positive breeding sites for *An. arabiensis* in the city of Bouaké. **A** Breeding site BS36 in a watercourse in the Air France district. **B** Breeding site BS1 in the Odiennekourani district, among old rice fields

of the districts in the city [35]. In Nigeria, in the late 1970s, *An. arabiensis* penetrated the forest belt of the Gulf of Guinea, far from its original distribution area, through urbanized areas as observed by Coluzzii et al. [36]. This fact was confirmed in the 1990s and the 2000s [37, 38].

In Côte d'Ivoire, because of the sociopolitical crisis that occurred from 2000 to 2011, only a few studies have been conducted in the city of Bouaké. Before the 2000s, Dossou-Yovo et al. [10] identified *An. gambiae s.l.* as the main vector in Bouaké according to morphological tools. After the crisis, several studies were conducted in and around Bouaké [16, 39–41]. However, the species identification techniques used in these studies (morphological identification or PCR according to Favia et al. [21]) did not allow the identification of *An. arabiensis*. Studies conducted elsewhere in the country during the same period (for example, [11, 13, 42]) have the same limitations.

In this study, *An. arabiensis* individuals were found two years in a row. Livestock trade between Burkina Faso and Côte d'Ivoire is significant. It could be suggested that *An. arabiensis* may have been introduced in Bouaké through trucks carrying cattle from Bobo-Dioulasso, for example, especially since *An. arabiensis* exhibits a strong zoophilic behaviour. Genomic analyses to compare the population profile of *An. arabiensis* in Bouaké with those of the

subregion, in particular of Bobo-Dioulasso, may help to understand the colonization process.

The biting behaviour (mostly exophilic) and biting time (in the second part of the night) of *An. arabiensis* collected in Bouaké is consistent with existing data [43, 44]. The first site with *An. arabiensis* larvae was a stream that fit the description of “low-flowing and partially shaded streams” cited by Sinka et al. [43]. It is a known type of breeding site for this species and resembles the Houet River in Bobo-Dioulasso where *An. arabiensis* proliferates [34]. The second larval habitat was in a garden market in an irrigated area. This is also a known type of larval habitat for this species [43], and these sites are very common in Bouaké. Indeed, Bouaké shows extensive lowland areas devoted to agriculture that have historically been associated with malaria transmission [10]. The use of these areas may have increased during the political crisis, when Bouaké was isolated from the rest of the country. There is, therefore, a high risk for *An. arabiensis* to proliferate in Bouaké and to increase malaria transmission even if no *An. arabiensis* were found to be carrying *Plasmodium*. Moreover, urban agriculture is usually associated with a high use of pesticides, which may result in the emergence of resistance in malaria vectors [45]. The *kdr* mutations L1014F and L1014S were both identified in the *An. arabiensis* specimens, but not the *ace-1^R* mutation as it is observed for this species in Bobo-Dioulasso [34]. The

number of individuals analysed was low but it should be noted that the L1014F *kdr* mutation frequency observed recently by Zoh et al. [40] in *An. gambiae s.l.* in Bouaké was in the same range.

Conclusion

In this study the presence of *An. arabiensis* is reported for the first time in Côte d'Ivoire, in the city of Bouaké. The presence of numerous potential breeding sites for this species in the area, as well as its ability to adapt to urban environments, suggest that *An. arabiensis* may play an important role in maintaining malaria transmission in the city in the future. These results call for entomological surveillance in the cities of Côte d'Ivoire and stress the need for alternative intervention strategies to address the expansion of this species.

Abbreviations

DIIS: Direction de l'Informatique et de l'Information Sanitaire (Department of Information Technology and Health Information); *Ace-1^R*: Acetylcholinesterase-1 gene; *Kdr*: Knockdown resistance gene; INS: Institut National de la Statistique; WHO: World Health Organization; HLC: Human landing catch method.

Acknowledgements

We thank participants who collected mosquitoes in Bouaké as well as households that welcomed them inside their home.

Author contributions

FF and KAA designed the study. FF, KAA, KFA, MMCD, AK, KLN, MK, DDZ, BC and SC conducted field work, laboratory work, and data management. FF, KAA and NM analysed the data. FF, AMA and NM wrote the manuscript. All authors read and approved the final manuscript.

Funding

This study is funded by the Agence Nationale de la Recherche (ANR) in France through the project COHESION (ANR 17 CE 22 0007 01).

Availability of data and materials

The datasets used and/or analysed during the current study are available from the corresponding author on reasonable request.

Declarations

Ethics approval and consent to participate

The protocol of this study was reviewed and approved by the National Life Sciences and Health Ethics Committee (Agreement No. 156-18/MSHP/CNESVS-km of 14 November 2018). The participants who collected the mosquitoes and their supervisors all gave their written informed consent. They received a vaccine against yellow fever as a prophylactic measure. Participants were treated free of charge for malaria according to WHO recommendations.

Consent for publication

Not applicable.

Competing interests

The authors declare no competing interests.

Author details

¹MIVEGEC (Université de Montpellier, CNRS, IRD), Montpellier, France. ²Centre d'Entomologie Médicale Et Vétérinaire, Bouaké, Côte d'Ivoire. ³Institut Pierre Richet, Institut National de Santé Publique, Bouaké, Côte d'Ivoire. ⁴Unité de Formation Et de Recherche Biosciences, Université Félix Houphouët-Boigny,

Abidjan, Côte d'Ivoire. ⁵Institut de Géographie Tropicale, Université Félix Houphouët-Boigny, Abidjan, Côte d'Ivoire.

Received: 18 April 2022 Accepted: 15 September 2022

Published online: 28 September 2022

References

1. WHO. World malaria report. 20 years of global progress and challenges. Geneva: World Health Organization; 2020. p. 2020.
2. DIIS. Rapport annuel sur la situation sanitaire 2018. MSHP; 2019.
3. Gottdenker NL, Streicker DG, Faust CL, Carroll CR. Anthropogenic land use change and infectious diseases: a review of the evidence. *EcoHealth*. 2014;11:619–32.
4. United Nations. World urbanization prospects: the 2018 revision: key facts. 2018.
5. Robert V, Macintyre K, Keating J, Trape JF, Duchemin JB, Warren M, Beier JC. Malaria transmission in urban sub-Saharan Africa. *Am J Trop Med Hyg*. 2003;68:169–76.
6. Hay SI, Guerra CA, Tatem AJ, Atkinson PM, Snow RW. Urbanization, malaria transmission and disease burden in Africa. *Nat Rev Microbiol*. 2005;3:81–90.
7. Doumbe-Belisse P, Kopya E, Ngadjieu CS, Sonhafouo-Chiana N, Talipouo A, Djamouko-Djonkam L, et al. Urban malaria in sub-Saharan Africa: dynamic of the vectorial system and the entomological inoculation rate. *Malar J*. 2021;20:364.
8. Donnelly MJ, McCall P, Lengeler C, Bates I, D'Alessandro U, Barnish G, et al. Malaria and urbanization in sub-Saharan Africa. *Malar J*. 2005;4:12.
9. Irish SR, Kyalo D, Snox RW, Coetzee M. Updated list of *Anopheles* species (Diptera: Culicidae) by country in the Afrotropical Region and associated islands. *Zootaxa*. 2020;4747:401–49.
10. Dossou-Yovo J, Doannio JM, Diarrassouba S, Chauvancy G. Impact d'aménagements de rizières sur la transmission du paludisme dans la ville de Bouaké, Côte d'Ivoire. *Bull Soc Pathol Exot*. 1998;91:327–33.
11. Assouho KF, Adja AM, Guindo-Coulibaly N, Tia E, Kouadio AMN, Zoh DD, et al. Vectorial transmission of malaria in major districts of Côte d'Ivoire. *J Med Entomol*. 2020;57:908–14.
12. Nzeyimana I, Henry MC, Dossou-Yovo J, Doannio JM, Diawara L, Carnevale P. Epidémiologie du paludisme dans le sud-ouest forestier de la Côte d'Ivoire (région de Taï). *Bull Soc Pathol Exot*. 2002;95:89–94.
13. Adja AM, Ngoran EK, Koudou BG, Dia I, Kengne P, Fontenille D, Chandre F. Contribution of *Anopheles funestus*, *An. gambiae* and *An. nili* (Diptera: Culicidae) to the perennial malaria transmission in the southern and western forest areas of Côte d'Ivoire. *Ann Trop Med Parasitol*. 2011;105:13–24.
14. Pages F, Girod R. Entomologie médicale dans les Armées. Premiers résultats de l'Unité d'entomologie médicale. *Med Trop*. 2004;64:431–6.
15. Betsi AN, Tchicaya ES, Koudou BG. Forte prolifération de larves d'*An. gambiae* et *An. funestus* en milieux rizières irrigués et non irrigués dans la région forestière ouest de la Côte-d'Ivoire. *Bull Soc Pathol Exot*. 2012;105:220–9.
16. Adja AM, Zoh DD, Sagna AB, Kpan DMS, Guindo-Coulibaly N, Yapi A, et al. Diversity of *Anopheles gambiae s.l.*, Giles (Diptera: Culicidae) larval habitats in urban areas and malaria transmission in Bouaké, Côte d'Ivoire. *Vector Borne Zoonotic Dis*. 2021;21:593–601.
17. INS. Rapport d'exécution et présentation des principaux résultats du Recensement Général de l'Habitat et de la Population de 2014. Institut National de la Statistique; 2014.
18. Mattingly PF. The mosquitoes of Ethiopian Region. London: Sutcliffe; 1971.
19. Gillies MT, Coetzee M. A supplement to the Anophelinae of Africa south of the Sahara (Afrotropical Region). Publication of the South African Institute for Medical Research, Johannesburg. 1987;55:141.
20. Cornel AJ, Collins FH. PCR of the ribosomal DNA intergenic spacer regions as a method for identifying mosquitoes in the *Anopheles gambiae* complex. *Methods Mol Biol*. 1996;50:321–32.
21. Favia G, Lanfrancotti A, Spanos L, Sidén-Kiamos I, Louis C. Molecular characterization of ribosomal DNA polymorphisms discriminating among chromosomal forms of *Anopheles gambiae s.s.* *Insect Biochem Mol Biol*. 2001;10:19–23.

22. Scott JA, Broodon WG, Collins FH. Identification of single specimens of the *Anopheles gambiae* complex by the polymerase chain reaction. *Am J Trop Med Hyg.* 1993;49:520–9.
23. Fanello C, Santolamazza F, Della TA. Simultaneous identification of species and molecular forms of the *Anopheles gambiae* complex by PCR-RFLP. *Med Vet Entomol.* 2002;16:461–4.
24. Mangold KA, Manson RU, Koay ES, Stephens L, Regner M, Thomson RB Jr, et al. Real-time PCR for detection and identification of *Plasmodium* spp. *J Clin Microbiol.* 2005;43:2435–40.
25. Bass C, Nikou D, Donnelly MJ, Williamson MS, Ranson H, Ball A, et al. Detection of knockdown resistance (*kdr*) mutations in *Anopheles gambiae*: a comparison of two new high-throughput assays with existing methods. *Malar J.* 2007;6:111.
26. Bass C, Nikou D, Vontas J, Williamson MS, Field LM. Development of high-throughput real-time PCR assays for the identification of insensitive acetylcholinesterase (*ace-1^h*) in *Anopheles gambiae*. *Pestic Biochem Physiol.* 2010;96:80–5.
27. Coetzee M, Craig M, le Sueur D. Distribution of African malaria mosquitoes belonging to the *Anopheles gambiae* complex. *Parasitol Today.* 2000;16:74–7.
28. Hamon J, Coz J. Epidémiologie générale du paludisme humain en Afrique occidentale : répartition et fréquence des parasites et des vecteurs et observations récentes sur quelques-uns des facteurs gouvernant la transmission de cette maladie. *Bull Soc Path Exot.* 1966;59:466–83.
29. Dia AK, Guèye OK, Niang EA, Diédhiou SM, Sy MD, Konaté A, et al. Insecticide resistance in *Anopheles arabiensis* populations from Dakar and its suburbs: role of target site and metabolic resistance mechanisms. *Malar J.* 2018;17:116.
30. Gadiaga L, Machault V, Pagès F, Gaye A, Jarjaval F, Godefroy L, et al. Conditions of malaria transmission in Dakar from 2007 to 2010. *Malar J.* 2011;10:312.
31. Jones CM, Toé HK, Sanou A, Namountougou M, Hughes A, Diabaté A, et al. Additional selection for insecticide resistance in urban malaria vectors: DDT resistance in *Anopheles arabiensis* from Bobo-Dioulasso, Burkina Faso. *PLoS ONE.* 2012;7: e45995.
32. Robert V, Gazin P, Ouédraogo V, Carnevale P. Le paludisme urbain à Bobo-Dioulasso (Burkina Faso). *Cahiers ORSTOM Ser Ent Parasitol.* 1986;24:121–8.
33. Diabaté A, Baldet T, Chandre F, Akogbeto M, Darriet F, Brengues C, et al. The role of agricultural use of insecticides in resistance to pyrethroids in *Anopheles gambiae* s.l. in Burkina Faso. *Am J Trop Med Hyg.* 2002;67:617–22.
34. Dabiré RK, Namountougou M, Sawadogo SP, Yaro LB, Toé HK, Ouari A, et al. Population dynamics of *Anopheles gambiae* s.l. in Bobo-Dioulasso city: bionomics, infection rate and susceptibility to insecticides. *Parasit Vectors.* 2012;21:127.
35. Soma DD, Kassié D, Sanou S, Karama FB, Ouari A, Mamai W, et al. Uneven malaria transmission in geographically distinct districts of Bobo-Dioulasso, Burkina Faso. *Parasit Vectors.* 2018;11(1):296.
36. Coluzzi M, Sabatini A, Petrarca V, Di Deco MA. Chromosomal differentiation and adaptation to human environments in the *Anopheles gambiae* complex. *Trans R Soc Trop Med Hyg.* 1979;73:483–97.
37. Onyabe DY, Conn JE. The distribution of two major malaria vectors, *Anopheles gambiae* and *Anopheles arabiensis*, in Nigeria. *Mem Inst Oswaldo Cruz.* 2001;96:1081–4.
38. Awolola TS, Okwa O, Hunt RH, Ogunrinade AF, Coetzee M. Dynamics of the malaria-vector populations in coastal Lagos south-western Nigeria. *Ann Trop Med Parasitol.* 2002;96:75–82.
39. Zoh DD, Ahoua Alou LP, Toure M, Pennetier P, Camara S, Traore DF, et al. The current insecticide resistance status of *Anopheles gambiae* (s.l.) (Culicidae) in rural and urban areas of Bouaké, Côte d'Ivoire. *Parasit Vectors.* 2018;11:118.
40. Traoré DF, Sagna AB, Adja AM, Zoh DD, Lingué KN, Coulibaly I, et al. Evaluation of malaria urban risk using an immuno-epidemiological biomarker of human exposure to *Anopheles* bites. *Am J Trop Med Hyg.* 2018;98:1353–9.
41. Zoh DD, Yapi A, Adja MA, Guindo-Coulibaly N, Kpan DMS, Sagna AB, et al. Role of *Anopheles gambiae* s.s. and *Anopheles coluzzii* (Diptera: Culicidae) in human malaria transmission in rural areas of Bouaké, in Côte d'Ivoire. *J Med Entomol.* 2019;4(57):1254–61.
42. Diakité NR, Guindo-Coulibaly N, Adja AM, Ouattara M, Coulibaly JT, Utzinger J, et al. Spatial and temporal variation of malaria entomological parameters at the onset of a hydro-agricultural development in central Côte d'Ivoire. *Malar J.* 2015;14:340.
43. Sinka ME, Bangs MJ, Manguin S, Coetzee M, Mbogo CM, Hemingway J, et al. The dominant *Anopheles* vectors of human malaria in Africa, Europe and the Middle East: occurrence data, distribution maps and bionomic précis. *Parasit Vectors.* 2010;3:117.
44. Doucoure S, Thiaw O, Bouganali C, Diagne N, Parola P, Sokhna C. *Anopheles arabiensis* and *Anopheles funestus* biting patterns in Dielmo, an area of low level exposure to malaria vectors. *Malar J.* 2020;19:230.
45. Yadouléon A, N'Guessan R, Allagbé H, Asidi A, Boko M, Osse R, et al. The impact of the expansion of urban vegetable farming on malaria transmission in major cities of Benin. *Parasit Vectors.* 2010;3:118.

Publisher's Note

Springer Nature remains neutral with regard to jurisdictional claims in published maps and institutional affiliations.

Ready to submit your research? Choose BMC and benefit from:

- fast, convenient online submission
- thorough peer review by experienced researchers in your field
- rapid publication on acceptance
- support for research data, including large and complex data types
- gold Open Access which fosters wider collaboration and increased citations
- maximum visibility for your research: over 100M website views per year

At BMC, research is always in progress.

Learn more biomedcentral.com/submissions

