



HAL
open science

Visualizing Pyrazinamide Action by Live Single-Cell Imaging of Phagosome Acidification and Mycobacterium tuberculosis pH Homeostasis

Pierre Santucci, Beren Aylan, Laure Botella, Elliott Bernard, Claudio Bussi, Enrica Pellegrino, Natalia Athanasiadi, Maximiliano Gutierrez

► To cite this version:

Pierre Santucci, Beren Aylan, Laure Botella, Elliott Bernard, Claudio Bussi, et al.. Visualizing Pyrazinamide Action by Live Single-Cell Imaging of Phagosome Acidification and Mycobacterium tuberculosis pH Homeostasis. *mBio*, 2022, 13 (2), <10.1128/mbio.00117-22>. <hal-03841554>

HAL Id: hal-03841554

<https://hal.science/hal-03841554v1>

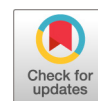
Submitted on 23 Feb 2024

HAL is a multi-disciplinary open access archive for the deposit and dissemination of scientific research documents, whether they are published or not. The documents may come from teaching and research institutions in France or abroad, or from public or private research centers.


L'archive ouverte pluridisciplinaire HAL, est destinée au dépôt et à la diffusion de documents scientifiques de niveau recherche, publiés ou non, émanant des établissements d'enseignement et de recherche français ou étrangers, des laboratoires publics ou privés.



HAL Authorization



Visualizing Pyrazinamide Action by Live Single-Cell Imaging of Phagosome Acidification and *Mycobacterium tuberculosis* pH Homeostasis

Pierre Santucci,^a Beren Aylan,^a Laure Botella,^a Elliott M. Bernard,^{a*} Claudio Bussi,^a Enrica Pellegrino,^a Natalia Athanasiadi,^a  Maximiliano G. Gutierrez^a

^aHost-Pathogen Interactions in Tuberculosis Laboratory, The Francis Crick Institute, London, United Kingdom

ABSTRACT *Mycobacterium tuberculosis* segregates within multiple subcellular niches with different biochemical and biophysical properties that, upon treatment, may impact antibiotic distribution, accumulation, and efficacy. However, it remains unclear whether fluctuating intracellular microenvironments alter mycobacterial homeostasis and contribute to antibiotic enrichment and efficacy. Here, we describe a live dual-imaging approach to monitor host subcellular acidification and *M. tuberculosis* intracellular pH. By combining this approach with pharmacological and genetic perturbations, we show that *M. tuberculosis* can maintain its intracellular pH independently of the surrounding pH in human macrophages. Importantly, unlike bedaquiline (BDQ), isoniazid (INH), or rifampicin (RIF), the drug pyrazinamide (PZA) displays antibacterial efficacy by disrupting *M. tuberculosis* intracellular pH homeostasis *in cellulo*. By using *M. tuberculosis* mutants, we confirmed that intracellular acidification is a prerequisite for PZA efficacy *in cellulo*. We anticipate this imaging approach will be useful to identify host cellular environments that affect antibiotic efficacy against intracellular pathogens.

IMPORTANCE We still do not completely understand why tuberculosis (TB) treatment requires the combination of several antibiotics for up to 6 months. *M. tuberculosis* is a facultative intracellular pathogen, and it is still unknown whether heterogeneous and dynamic intracellular populations of bacteria in different cellular environments affect antibiotic efficacy. By developing a dual live imaging approach to monitor mycobacterial pH homeostasis, host cell environment, and antibiotic action, we show here that intracellular localization of *M. tuberculosis* affects the efficacy of one first-line anti-TB drug. Our observations can be applicable to the treatment of other intracellular pathogens and help to inform the development of more effective combined therapies for tuberculosis that target heterogeneous bacterial populations within the host.

KEYWORDS tuberculosis, microenvironments, antibiotics, intracellular pharmacokinetics, human macrophages, *Mycobacterium tuberculosis*

Tuberculosis (TB), caused by *Mycobacterium tuberculosis*, remains one of the deadliest infectious diseases worldwide (1). In 2020, it was estimated that almost 10 million people developed the active form of the disease and 1.3 million people died from TB, and recent data indicate that the COVID-19 pandemic is disrupting access to TB care and treatment (1).

Drug-susceptible TB treatment relies on a standard chemotherapy regimen that includes four first-line antibiotics, rifampicin (RIF), isoniazid (INH), ethambutol (EMB), and pyrazinamide (PZA), which are administered over a period of at least 6 months (1). This extensive treatment is often associated with side effects and toxicity, affecting compliance and contributing to the emergence of antibiotic-resistant strains (2). In that context, it is crucial to better understand how current anti-TB chemotherapies

Editor Sabine Ehrt, Weill Cornell Medical College

Copyright © 2022 Santucci et al. This is an open-access article distributed under the terms of the [Creative Commons Attribution 4.0 International license](https://creativecommons.org/licenses/by/4.0/).

Address correspondence to Pierre Santucci, pierre.santucci@crick.ac.uk, or Maximiliano G. Gutierrez, max.g@crick.ac.uk.

*Present address: Elliott M. Bernard, Department of Biochemistry, University of Lausanne, Epalinges, Switzerland.

The authors declare no conflict of interest.

Received 13 January 2022

Accepted 24 February 2022

Published 24 March 2022

work to develop a new generation of efficient, fast-acting, and compliance-friendly treatments.

TB is a complex disease in which *M. tuberculosis* infection is mainly characterized by the formation of heterogeneous pulmonary granulomatous lesions that evolve dynamically over time (3, 4). Inside these highly structured cellular aggregates, which may also contain necrotic material, alveolar macrophages constitute the primary niche used by the tubercle bacilli to replicate (5). To survive and replicate within host macrophages, *M. tuberculosis* has successfully developed multiple strategies to counteract host cell defense mechanisms (6). Among them, both modulation and subversion of phagosome maturation and its ability to survive within acidic and hydrolytic microenvironments have been demonstrated to be crucial for the intracellular lifestyle of *M. tuberculosis* (7–12). In addition, *M. tuberculosis* can damage the phagosome through the action of its type VII secretion system ESX-1 and cell wall-associated phthiocerol dimycocerosate (PDIM) lipids to access the pH-neutral, nutrient-rich cytosol (13–19).

Because *M. tuberculosis* is localized in several intracellular niches, the generation of new drug regimens should consider the efficient targeting of *M. tuberculosis* intracellular populations residing within host cells. Ideally, anti-TB chemotherapy must include antibiotics with pharmacokinetic properties that allow agents to (i) penetrate lung tissue and infected cells, (ii) reach the wide-ranging subcellular compartments in which *M. tuberculosis* resides, and (iii) be active in these specific microenvironments to finally display optimal antibacterial efficacy. Understanding how subcellular environments affect bacterial fitness (20, 21) but more importantly antibiotic localization, exposure, and consequently efficacy against intracellular pathogens is crucial, and these areas have only recently begun to be investigated (22, 23).

Cell compartment-specific consideration of bioactivity is of particular importance for antibiotics such as the front-line drug PZA, which was demonstrated to be highly potent against the tubercle bacilli within infected mice but did not display activity under standard culture conditions *in vitro* (24–27). Indeed, *in vitro* PZA requires an acidic pH below 5.5 to be effective against *M. tuberculosis* (25, 28, 29). In this widely accepted pH-dependent mechanism of action, PZA enters the bacteria by diffusion and is converted by the PncA enzyme to form the deprotonated negatively charged total pyrazinoic acid [POA⁽⁻⁾] anion. This POA⁽⁻⁾ anion is then actively exported into the extracellular milieu. If *M. tuberculosis* faces an acidic environment, POA⁽⁻⁾ acquires a hydrogen cation to form the neutral protonated pyrazinoic acid (HPOA) molecule. This protonated form is able to diffuse across the bacterial envelope to finally disrupt intrabacterial pH homeostasis and membrane potential (30). In that context, several independent studies proposed that POA molecules accumulate dependently on the external pH *in vitro* and further collapse *M. tuberculosis* intrabacterial pH homeostasis (29, 31–33). However, this proposed pH-dependent mode of action of PZA/POA, where molecules acidify the *M. tuberculosis* cytoplasm, has been challenged (34, 35). Alternative pH-independent mechanisms underlying PZA/POA efficacy have been proposed (36, 37) whereby POA⁽⁻⁾ acting at neutral pH can competitively inhibit the aspartate decarboxylase PanD and enhance its targeted degradation via the Clp system, thus impairing the biosynthesis of coenzyme A (38–41). In this model, PZA/POA molecules are active regardless of the environmental pH surrounding *M. tuberculosis* and do not act as intrabacterial pH-collapsing agents. Overall, it is notable that despite PZA being used as a front-line drug for almost 70 years in the clinic, the molecular and cellular mechanisms underlying PZA efficacy remain unclear (37).

By using correlative light electron ion microscopy (CLEIM) approaches, we showed that PZA/POA molecules require phagosomal residency and acidification to efficiently accumulate within *M. tuberculosis* and display optimal activity within human macrophages (23). *M. tuberculosis* can transit through neutral and acidic environments multiple times during the infection cycle (18, 42); however, it remains unclear how these spatial and temporal changes affect the intracellular activity of PZA and its impacts on intrabacterial pH homeostasis.

To address these questions, we developed a dual-imaging approach that allows monitoring of endolysosomal acidification and *M. tuberculosis* intrabacterial pH homeostasis in real time. Single-cell quantitative analysis shows that *M. tuberculosis* can maintain its intrabacterial pH independently of the host pH. By live-cell imaging and tracking of *M. tuberculosis* bacterial populations residing within acidic endolysosomes, we show that long-term residence within acidic microenvironments, i.e., for several hours, is not sufficient to impact *M. tuberculosis* pH homeostasis. Using this approach, we describe the spatiotemporal dynamics of PZA mode of action within *M. tuberculosis*-infected human macrophages, showing that phagosomal restriction and host subcellular acidification are crucial for PZA/POA antibacterial efficacy. Finally, by using mycobacterial mutants with different phenotypes and intracellular lifestyles, we define how both host-driven and bacterial factors contribute to PZA efficacy in human macrophages.

RESULTS

A live dual-imaging approach to monitor organelle and *M. tuberculosis* acidification. To concomitantly monitor macrophage organelle and *M. tuberculosis* acidification status, we developed a high-content dual-imaging approach that allows live-fluorescence microscopy visualization of infected human macrophages, including quantitative measurements of subcellular acidification and *M. tuberculosis* intrabacterial pH homeostasis. We first generated an *M. tuberculosis* reporter strain (Mtb pH-GFP) that constitutively produces a ratiometric pH-GFP (green fluorescent protein) indicator to dynamically record intrabacterial pH fluctuations *in vitro* and *in cellulo*, as previously described (11, 31). This reporter possesses two excitation maxima at wavelengths 405 nm and 488 nm, and the ratio of 510-nm fluorescence emissions generated by excitation at these two excitation wavelengths varies as a function of the protonation state of the GFP fluorophore. Therefore, a lower 405-nm/488-nm ratio indicates a lower intrabacterial pH (11, 31). Then, human monocyte-derived macrophages (MDM) and human-induced pluripotent stem cell (iPSC)-derived macrophages (iPSDM) were infected with the reporter strain for 24 h, a time that allows bacteria to adapt intracellularly and localize in multiple niches (15, 18). Infected cells were left untreated or pulsed for an additional 24 h with concanamycin A (ConA), a selective v-ATPase inhibitor that inhibits endolysosomal acidification (43), and further stained with the lysosomotropic fluorescent probe LysoTracker to visualize acidic endolysosomes and determine host subcellular acidification profile. Next, *M. tuberculosis*-associated LysoTracker intensity and *M. tuberculosis* intrabacterial pH were analyzed by automated high-content microscopy (see Fig. S1 in the supplemental material). A quantitative analysis in *M. tuberculosis*-infected MDM (median_{CTRL} = 422.6, IQR_{CTRL} = 334.9, and median_{ConA} = 241.6, IQR_{ConA} = 64.5, respectively) and *M. tuberculosis*-infected iPSDM (median_{CTRL} = 1,964.2, IQR_{CTRL} = 1,006.0, and median_{ConA} = 929.3, IQR_{ConA} = 1,009.4, respectively) (IQR stands for interquartile range) showed that the median *M. tuberculosis*-associated LysoTracker intensity was reduced by approximately 2-fold upon ConA treatment (*P* values 0.06 and 0.08, respectively) (Fig. 1A and C), confirming that endolysosomal acidification was impaired (23). On the other hand, a quantitative analysis of *M. tuberculosis* intrabacterial pH under control or ConA-treated conditions showed that they were similar in both infected MDM (Fig. 1B) and infected iPSDM (Fig. 1D) with absolute median differences that were almost null (Δ median_{pH-GFP} = 0.035 and 0.016, respectively), suggesting that intracellular acidification does not impact *M. tuberculosis* intrabacterial pH in human macrophages. To confirm that *M. tuberculosis* can maintain its intrabacterial pH independently of macrophage pH, we determined the Spearman correlation coefficient between Mtb pH-GFP ratio values and their corresponding associated LysoTracker intensity. There was no positive or negative association with correlation coefficients of $r_s = 0.022$, $P < 0.01$, and $r_s = 0.062$, $P < 0.0001$, in MDM or iPSDM, respectively (Fig. 1E to H). Next, we performed live-image acquisition of *M. tuberculosis*-infected LysoTracker-stained iPSDM at higher resolution (18, 42). In agreement with the previous findings (Fig. 1G and H), analysis of Spearman's correlation coefficient did

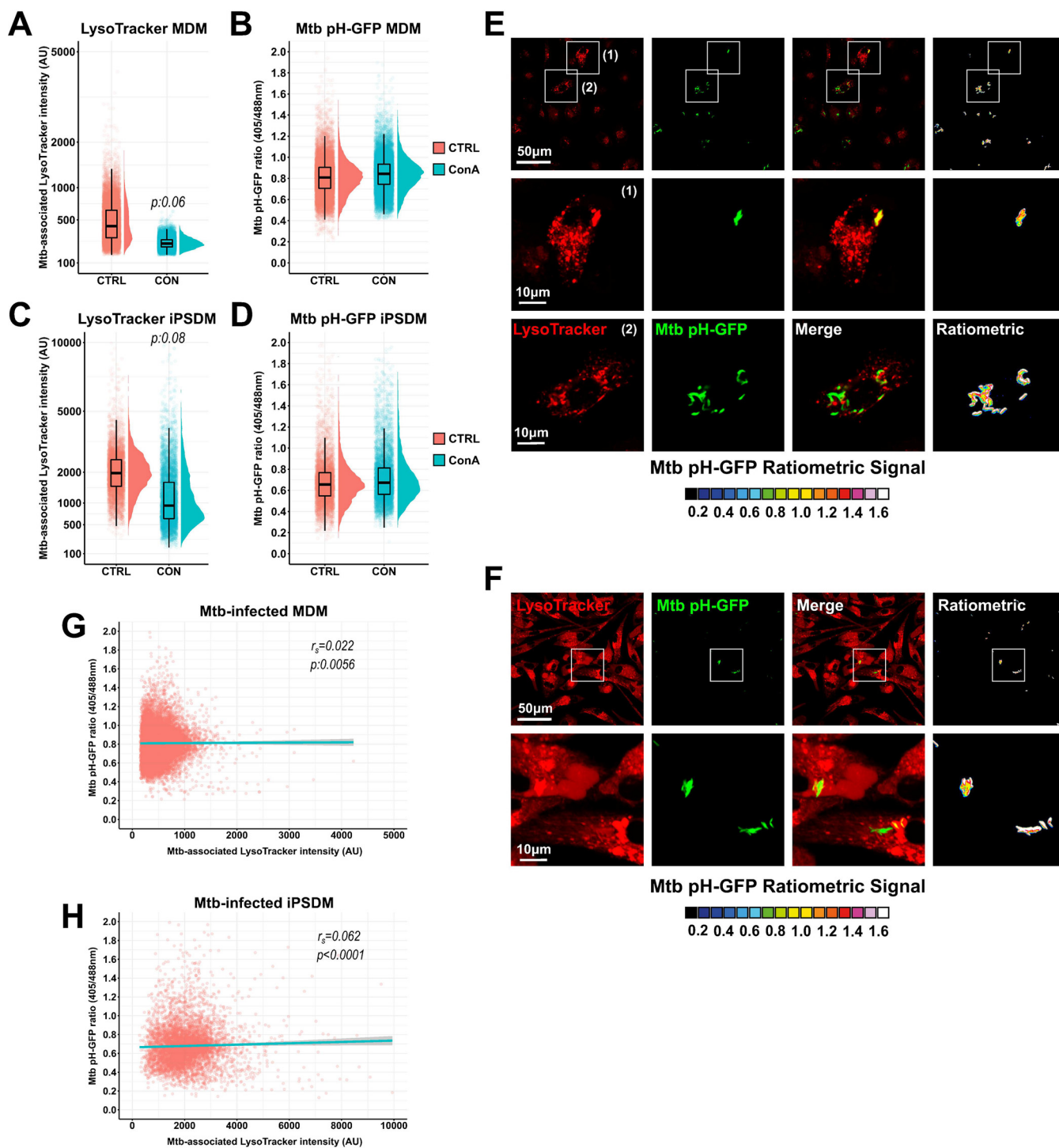


FIG 1 High-content dual imaging of *M. tuberculosis* intrabacterial pH and host cell intracellular acidification. Human macrophages were infected for 24 h and subsequently treated with ConA or left untreated for an additional 24 h. Cells were then pulsed with 200 nM LysoTracker Red for 30 min before live acquisition was performed using the OPERA Phenix imaging platform. Quantitative analysis of Mtb pH-GFP ratio (405/488 nm) and *M. tuberculosis*-associated LysoTracker intensities within infected MDM (A) or infected iPSDM (C) in the absence (pink) or presence (cyan) of v-ATPase inhibitor ConA. Results obtained from control (CTRL) or ConA-treated samples are displayed as raincloud plots where black boxplots are overlaid on top of individual raw data and associated with their respective density plots. (B and D) Quantification of Mtb pH-GFP ratio (405/488 nm) within infected MDM (B) or infected iPSDM (D) in the absence (pink) or presence (cyan) of v-ATPase inhibitor ConA. Results obtained from CTRL or ConA-treated samples are displayed as raincloud plots where black boxplots are overlaid on top of individual raw data and associated with their respective density plots. (E and F) Representative micrographs display LysoTracker labeling (red) and Mtb pH-GFP (green). Ratiometric signal was obtained by dividing the fluorescence intensity acquired with excitation/emission channels of 405/510 nm by the one obtained at 488/510 nm. Ratiometric signal is displayed as a 16-color palette ranging from 0 to 1.6 units. Scale bar corresponds to 50 μ m. Panel E shows MDM, and panel F shows iPSDM. Regions of interest highlighted by the white rectangles are shown in (Continued on next page)

not show any correlation between subcellular acidification profile and *M. tuberculosis* intrabacterial pH with a value of $r_s = -0.19$, $P < 0.0001$ (Fig. S2A). Altogether, these data support the notion that *M. tuberculosis* can maintain its own pH when facing a wide range of *in vitro* and *in cellulo* environmental pH (11, 31, 32).

***M. tuberculosis* subcellular localization within acidic compartments and time of residence does not affect bacterial pH homeostasis.** To complement our live-snapshot imaging approach and capture the dynamic nature of these transient events, we performed live imaging at low content/high resolution and tracked individual mycobacterial regions of interest (mROI) to define whether the time of residency within LysoTracker-positive compartments impacts *M. tuberculosis* intrabacterial pH. Live-cell imaging of *M. tuberculosis*-infected iPSDM was performed over a 6-h period with 30-min intervals to minimize photobleaching and/or phototoxicity. Monitoring and tracking of mROI revealed at least 4 different phenotypic profiles: (i) LysoTracker⁽⁻⁾ *M. tuberculosis* that became LysoTracker⁽⁺⁾ (Fig. 2A), (ii) LysoTracker⁽⁺⁾ *M. tuberculosis* that remained LysoTracker⁽⁺⁾ (Fig. 2B), (iii) LysoTracker⁽⁺⁾ *M. tuberculosis* that became LysoTracker⁽⁻⁾ (Fig. 2C), and (iv) LysoTracker⁽⁻⁾ *M. tuberculosis* that remained LysoTracker⁽⁻⁾ (Fig. 2D). Next, we analyzed the dynamics of *M. tuberculosis*-associated LysoTracker intensity and pH-GFP ratio (Fig. 2E) as previously described (18, 42). We observed that over time the association with LysoTracker was very heterogenous and that Mtb pH-GFP ratio did not significantly change, with no correlation between LysoTracker association and Mtb pH-GFP ratio (Fig. 2E). To exclude the possibility that prolonged exposure to low pH within an acidified compartment impacts *M. tuberculosis* pH homeostasis, we analyzed the cumulative values of *M. tuberculosis*-associated LysoTracker fluorescence intensity over time to include total LysoTracker intensity association during 360 min and the corresponding Mtb pH-GFP ratios (Fig. 2F), thus giving a quantitative profile of LysoTracker intensity faced by multiple mROI over the entire time course. In agreement with the previous analysis, despite heterogenous accumulation of LysoTracker with *M. tuberculosis*, there were no significant changes in *M. tuberculosis* pH homeostasis (Fig. 2F). Determination of Spearman's correlation coefficients at the end time point did not show positive or negative association between subcellular acidification profile and *M. tuberculosis* intrabacterial pH with a value of $r_s = -0.075$ and $r_s = -0.011$ for the two different analyses, respectively (Fig. 2E and F). We concluded that *M. tuberculosis* is able to maintain its intracellular pH even when facing fluctuating acidic intracellular environments (11, 31, 32).

Spatiotemporal analysis of PZA-mediated *M. tuberculosis* intrabacterial pH homeostasis disruption *in cellulo*. The molecular mechanism(s) of PZA action has been mostly experimentally tested within *in vitro* cell-free media, and it is unknown whether PZA/POA molecules are able to disrupt *M. tuberculosis* intrabacterial pH homeostasis *in cellulo*. To address this question, human macrophages were infected with Mtb pH-GFP for 24 h and subsequently treated with PZA, bedaquiline (BDQ), INH, or RIF or left untreated for an additional 24 h before being stained with LysoTracker and live imaged. Quantitative analysis of *M. tuberculosis*-associated LysoTracker intensity revealed that BDQ treatment was the only condition impacting *M. tuberculosis*-associated LysoTracker intensity profile as previously reported (median_{BDQ} = 4,252.1, IQR_{BDQ} = 3,369.3, and median_{CTRL} = 2,502.2, IQR_{CTRL} = 1,221.3, respectively) (Fig. 3A) (44). However, despite its proposed ionophore activity *in vitro* (45) and potent activity of enhancing the intracellular acidification processes (44), such effects were not sufficient to overcome bacterial regulation of cytosolic pH, as we did not observe changes in *M. tuberculosis* intrabacterial pH in the presence of BDQ (mean normalized pH-GFP ratio of -0.006 ; P value = 0.887) (Fig. 3B and C). These results are in line with previous studies that have questioned the ability of

FIG 1 Legend (Continued)

detail in the bottom panels, respectively. Scale bar corresponds to 10 μ m. (G and H) Spearman's correlation between *M. tuberculosis*-associated LysoTracker (x axis) and Mtb pH-GFP ratio (405/488 nm) (y axis) signals in individual bacterial region of interests within infected MDM (G) or infected iPSDM (H). The cyan line shows the linear regression model; the Spearman rank correlation coefficient (r_s) and the corresponding P value were calculated by using the ggpubr R package and two-tailed statistical t test. Between 5,895 and 15,823 bacterial regions of interest were analyzed per experimental condition. Results are representative of $n = 2$ biologically independent experiments performed at least in two to three technical replicates. Statistical analysis was performed using the Wilcoxon signed-rank test, where untreated control was used as the reference condition.

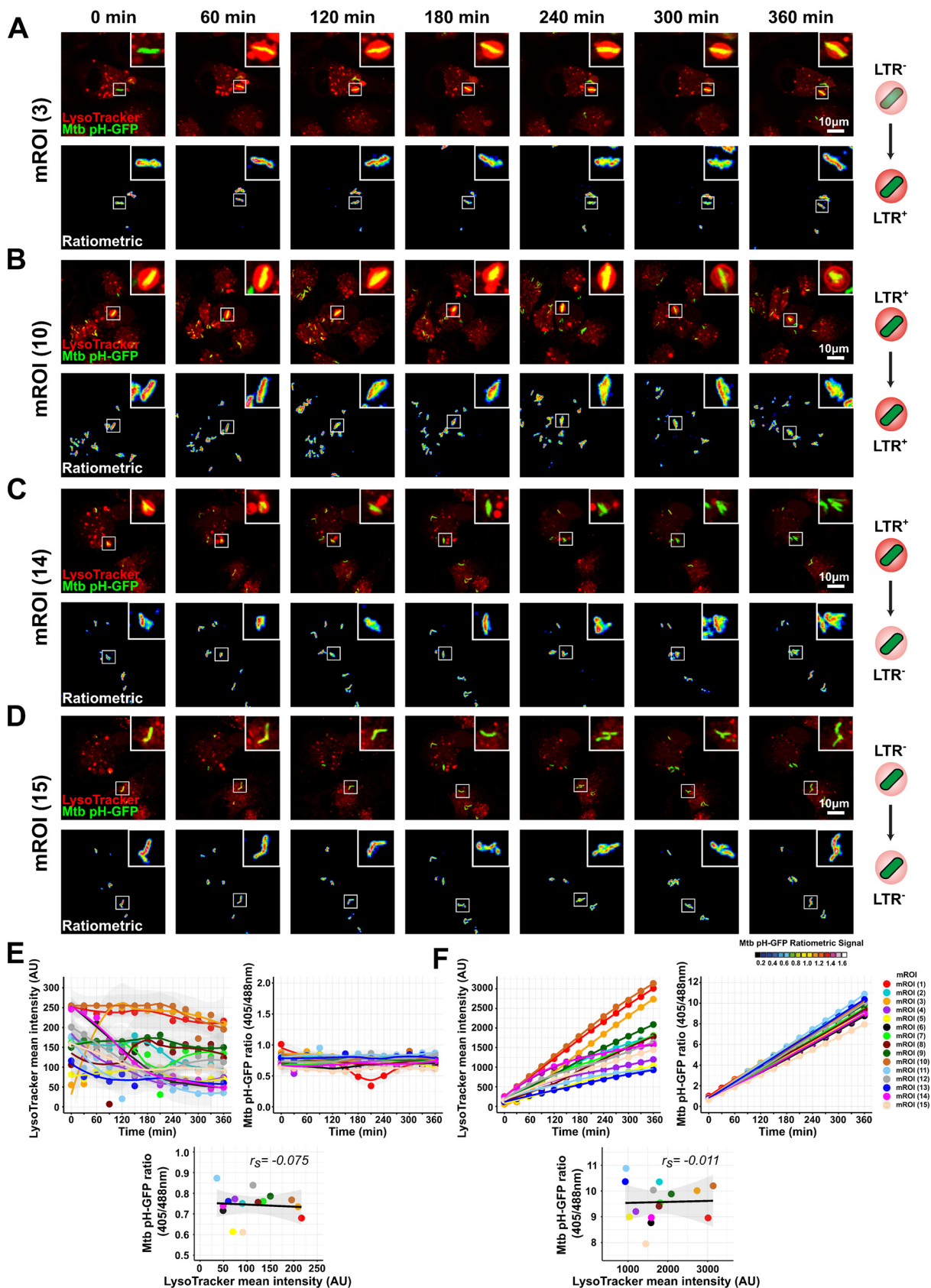


FIG 2 Live-cell imaging of *M. tuberculosis* pH homeostasis in acidic subcellular compartments. Human iPSDM were infected for 24 h and then pulsed with 200 nM LysoTracker Red for 30 min before live acquisition was performed using a Leica SP5 AOBs laser scanning confocal (Continued on next page)

BDQ and diarylquinolines to alter *M. tuberculosis* intrabacterial pH and the significance of this process in the antibacterial activity of these compounds (46, 47). Similar results were obtained in the presence of INH and RIF where Mtb pH-GFP ratios were similar to the untreated control condition (mean normalized pH-GFP ratio of 0.016, P value = 0.160, and ratio of -0.014 , P value = 0.319, respectively) (Fig. 3B and C). Strikingly, from the four different antibiotics tested, PZA was the only one able to induce changes in Mtb pH-GFP ratio, providing evidence that PZA displays intrabacterial pH-disruptive activity in *M. tuberculosis*-infected human macrophages (mean normalized pH-GFP ratio of 0.155; P value ≤ 0.001) (Fig. 3C). PZA/POA molecules require endolysosomal acidification to accumulate inside *M. tuberculosis* and display antimicrobial efficacy (23). We hypothesized that this process is likely resulting from the conversion of POA⁽⁻⁾ into its protonated form HPOA within acidic host microenvironments (Fig. 3D). To investigate whether PZA/POA-mediated intrabacterial pH homeostasis disruption *in cellulo* requires endolysosomal acidification, *M. tuberculosis*-infected MDM were treated with increasing concentration of PZA ranging from 0 to 400 mg/L in the presence or absence of the v-ATPase inhibitor ConA, and both host and bacterial acidification profiles were monitored at 4 h, 16 h, 24 h, and 72 h posttreatment (Fig. 3E) using our live dual-imaging approach. Quantitative analysis of Mtb pH-GFP fluorescence profiles at the indicated time points in untreated control cells confirmed that *M. tuberculosis* can stably maintain intrabacterial pH through the course of the infection (Fig. 3F to I). Treatment of infected human macrophages with PZA was able to decrease *M. tuberculosis* intrabacterial pH in a time- and concentration-dependent manner (Fig. 3F to I). After 4 h of treatment, only 400 mg/L of PZA showed a detectable effect on *M. tuberculosis* intrabacterial pH (mean normalized pH-GFP ratio of 0.0625; P value ≤ 0.01) (Fig. 3F). After 16 h, 24 h, and 72 h, PZA concentrations ranging from 30 mg/L to 400 mg/L significantly disrupted bacterial pH homeostasis (Fig. 3G to I). The absolute changes in Mtb pH-GFP ratio relative to the control condition confirmed a time- and concentration-dependent effect of PZA on *M. tuberculosis* intrabacterial pH (Fig. 3J to M). Importantly, PZA treatment did not induce rerouting of *M. tuberculosis* into endolysosomal compartments (Fig. S3), ruling out a concentration-dependent effect toward pH-GFP ratio due to excessive lysosomal delivery. We also noticed that the LysoTracker intensity profile decreased over time independently of the infection, suggesting that human primary macrophages display optimal lysosomal activity for a limited amount of time during their *in vitro* life span (Fig. S4). ConA cotreatment with increasing concentrations of PZA resulted in an almost complete loss of PZA *M. tuberculosis* pH-disruptive function (Fig. 3J to M), suggesting that functional acidification of the *M. tuberculosis* phagosome is a prerequisite for PZA-mediated pH disruption in intracellular *M. tuberculosis*. Quantitative correlative analysis of Mtb pH-GFP ratio values with associated LysoTracker intensity at increasing PZA concentrations did not show a direct association, with Spearman's correlation coefficients r_s between -0.3 and 0.3 (Fig. S5). These data highlight that PZA-mediated pH homeostasis disruption within acidic environments is a dynamic process.

FIG 2 Legend (Continued)

microscope. Quantitative analysis of Mtb pH-GFP ratio (405/488 nm) and *M. tuberculosis*-associated LysoTracker was performed using the open-source Fiji software. (A to D) Representative micrographs display LysoTracker labeling (red) and Mtb pH-GFP (green) of 4 distinct mROI (3, 10, 14, and 15, respectively) with different LysoTracker-associated fluorescence patterns along the kinetic. Ratiometric signal was obtained by dividing the fluorescence intensity acquired with excitation/emission channels of 405/510 nm by the one obtained at 488/510 nm. Ratiometric signal is displayed as a 16-color palette ranging from 0 to 1.6 units. Events of interest are highlighted with white squares, and a zoom-in is displayed at the top right corner of each micrograph. Scale bar corresponds to 10 μm . (E) Quantitative analysis of intracellular *M. tuberculosis*-associated LysoTracker intensity and Mtb pH-GFP profiles of single-tracked mROI over time. Left panel shows the mean LysoTracker intensity associated with Mtb pH-GFP, and the right panel shows their corresponding fluorescence ratio profiles. Bottom panel shows Spearman's correlation between *M. tuberculosis*-associated LysoTracker (x axis) and Mtb pH-GFP ratio (405/488 nm) (y axis) signals from single-tracked mROI at the end of the kinetic ($t_{360 \text{ min}}$). Spearman rank correlation coefficient (r_s) was calculated by using the ggpubr R package. Each color represents one mROI, and the corresponding key is displayed in panel F. (F) Quantitative analysis of cumulative *M. tuberculosis*-associated LysoTracker intensity and Mtb pH-GFP profiles of single-tracked mROI over time. Left panel shows the cumulative mean LysoTracker intensity associated with Mtb pH-GFP, and the right panel shows their corresponding fluorescence ratio profiles. Bottom panel shows Spearman's correlation between cumulative *M. tuberculosis*-associated LysoTracker values (x axis) and cumulative Mtb pH-GFP ratio values (405/488 nm) (y axis) signals from single-tracked mROI over the kinetic ($t_{360 \text{ min}}$). Spearman rank correlation coefficient (r_s) was calculated by using the ggpubr R package. Each color represents one mROI, and the corresponding key is displayed on the right of the panel. Results are from $n = 15$ individually tracked mROI.

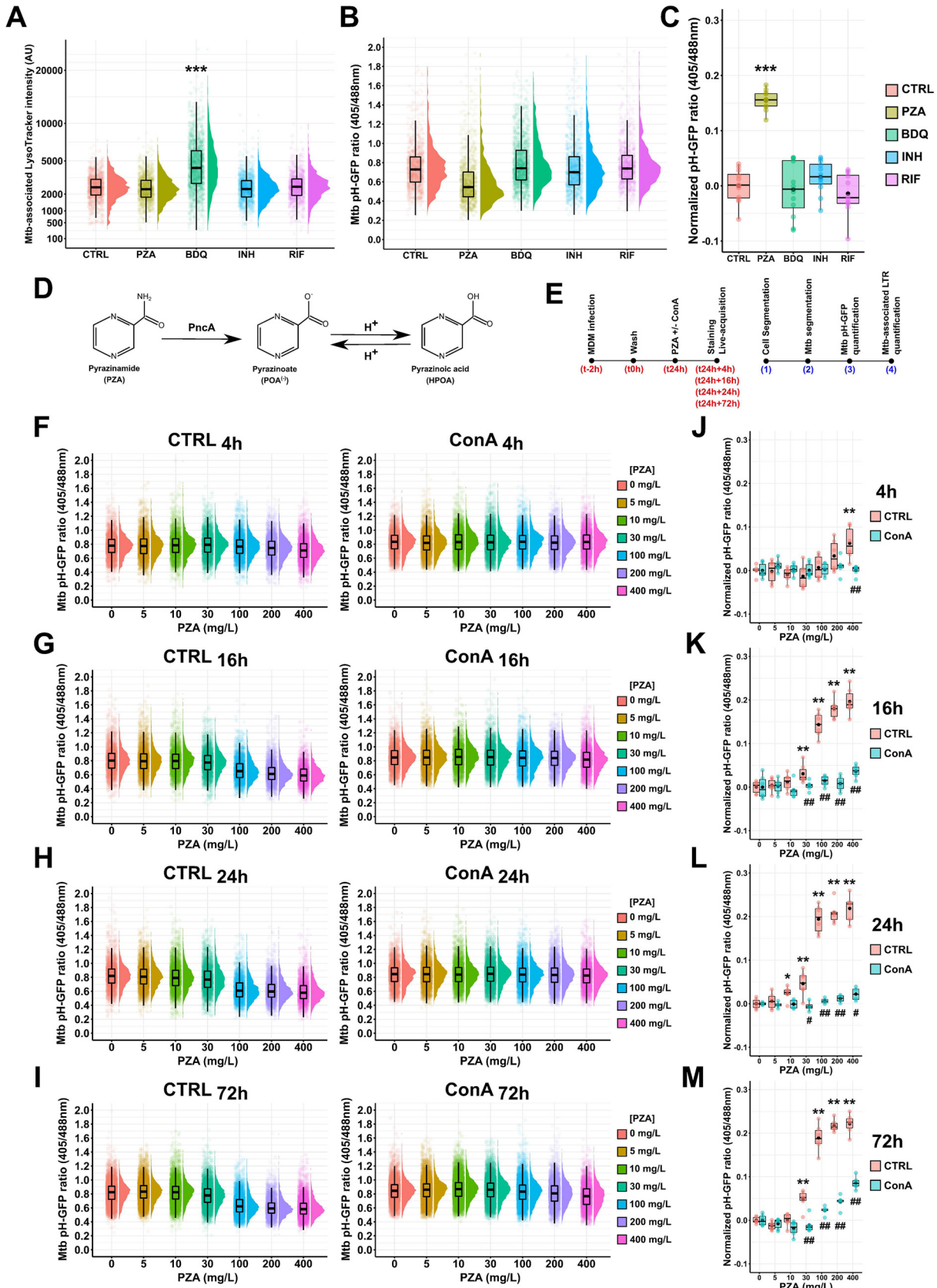


FIG 3 Spatiotemporal analysis of PZA-mediated *M. tuberculosis* intrabacterial pH homeostasis disruption *in cellulo*. (A to C) Human macrophages were infected with Mtb pH-GFP for 24 h and subsequently treated with either 100 mg/L of PZA, 2.5 mg/L of BDQ, 5 mg/L of (Continued on next page)

Endolysosomal acidification and pH-disruptive activity of PZA contribute to *M. tuberculosis* restriction in human macrophages. We next hypothesized that functional host intracellular acidification and PZA-mediated pH decrease are required for mycobacterial growth inhibition. In order to test this hypothesis, we quantified *M. tuberculosis* intracellular replication at the single-cell level in the presence of increasing concentration of PZA in both control and ConA-treated cells (Fig. 4A). Results from dose-response analysis showed that functional endolysosomal acidification, required for PZA-mediated pH disruption, is also required for optimal PZA efficacy and *M. tuberculosis* growth restriction over the course of infection (Fig. 4A). The determination of PZA half-maximal effective concentration (EC_{50}) using a four-parameter logistic nonlinear regression model showed that ConA cotreatment increased, by approximately 3.5 times, the amount of antibiotic required to efficiently inhibit 50% of *M. tuberculosis* growth *in cellulo* (49.5 ± 19.2 mg/L and 173.1 ± 35.2 mg/L, respectively) (Fig. 4A and B). Surprisingly, when using 200 mg/L or 400 mg/L of PZA, no significant differences between the control and the ConA-treated cells regarding *M. tuberculosis* growth were observed (Fig. 4A and B). We hypothesized that PZA at higher concentrations might be able to diffuse evenly within *M. tuberculosis*-infected cells and reach the entire population contained within distinct subcellular compartments including membrane-bound and cytosolic bacteria. This also suggests that at very high concentrations, the contribution of external acidic pH required for PZA/POA to display inhibitory effects might be limited. The results obtained in this experimental setting agree with our previous observations showing that the use of *v*-ATPase inhibitors is able to counteract PZA/POA-mediated growth inhibition by impairing POA accumulation within the bacteria (23). These experiments were also performed in another human macrophage model using iPSDM (Fig. S6). Notably, in iPSDM antagonistic effects between PZA and ConA were also observed; however, the phenotypes were less pronounced than in *M. tuberculosis*-infected MDM, suggesting that iPSDM and MDM might have different intracellular pH homeostatic processes. Altogether, these findings support the proposed pH-dependent mode of action of PZA, in which endolysosomal acidification is a prerequisite and driver of PZA/POA-mediated pH homeostasis disruption, which controls bacterial growth in human macrophages.

FIG 3 Legend (Continued)

INH, or 5 mg/L of RIF or left untreated for 24 h. Cells were then pulsed with 200 nM LysoTracker Red for 30 min before live acquisition was performed using the OPERA Phenix imaging platform. (A and B) Quantification of *M. tuberculosis*-associated LysoTracker mean intensity (A) or Mtb pH-GFP ratio (405/488 nm) (B) within infected MDM treated with different antibiotics for 24 h. Results are displayed as raincloud plots where black boxplots are overlaid on top of individual raw data and associated with their respective density plots. Between 1,102 and 1,658 bacterial regions of interest were analyzed per experimental condition. (C) Determination of absolute changes in Mtb pH-GFP ratio (405/488 nm) upon various antibiotic treatments. Mean pH-GFP ratio of each antibiotic treatment was subtracted from the untreated control 24 h posttreatment to obtain an absolute value reflecting antibiotic-mediated pH disruption normalized to the control. Determination of normalized pH-GFP ratio was performed for each condition, and results are displayed as boxplots with individual replicate data. Black dots were added to highlight the mean of each condition. Each color represents a specific antibiotic or the control condition. Results are from $n = 2$ biologically independent experiments performed at least in two to four technical replicates. Statistical analysis was performed using Wilcoxon signed-rank test, where untreated control was used as the reference condition (*, $P \leq 0.05$; **, $P \leq 0.01$; ***, $P \leq 0.001$). (D) Chemical structures of PZA, $POA^{(-)}$, and HPOA. Conversion of the prodrug PZA into $POA^{(-)}$ is mediated by the bacterial pyrazinamidase PncA, and transition of $POA^{(-)}$ into HPOA is driven by proton availability. (E) Schematic representation of the experimental procedure followed to perform MDM infection, staining, and fluorescence microscopy imaging. (F to M) Human macrophages were infected for 24 h and subsequently treated with increasing concentrations of PZA ranging from 0 to 400 mg/L in the absence or presence of ConA for 4 h, 16 h, 24 h, or 72 h. Cells were then pulsed with 200 nM LysoTracker Red for 30 min before live acquisition was performed using the OPERA Phenix imaging platform. (F to I) Quantification of Mtb pH-GFP ratio (405/488 nm) within infected MDM treated with increasing concentrations of PZA ranging from 0 to 400 mg/L in the absence or presence of *v*-ATPase inhibitor ConA at 4 h, 16 h, 24 h, or 72 h posttreatment. Results are displayed as raincloud plots where black boxplots are overlaid on top of individual raw data and associated with their respective density plots. Each color represents a specific PZA concentration. Between 2,164 and 8,813 bacterial regions of interest were analyzed per experimental condition. (J to M) Determination of absolute changes in Mtb pH-GFP ratio (405/488 nm) upon PZA treatment. Mean pH-GFP ratio of each antibiotic treatment was subtracted from the PZA-untreated control to obtain an absolute value reflecting antibiotic-mediated pH disruption normalized to its respective control in the presence or absence of ConA at 4 h, 16 h, 24 h, or 72 h posttreatment. Determination of normalized pH-GFP ratio was performed in the absence (pink) or presence (cyan) of *v*-ATPase inhibitor ConA. Results are displayed as boxplots with individual data. Black dots were added to highlight the mean of each condition. Results are from $n = 2$ biologically independent experiments performed at least in two to three technical replicates. Statistical analysis was performed using Wilcoxon signed-rank test, where PZA effect on *M. tuberculosis* intrabacterial pH was assessed against the untreated control (*, $P \leq 0.05$; **, $P \leq 0.01$; ***, $P \leq 0.001$) and ConA effect toward PZA was assessed by comparing each concentration with its respective untreated control as reference condition (#, $P \leq 0.05$; ##, $P \leq 0.01$; ###, $P \leq 0.001$).

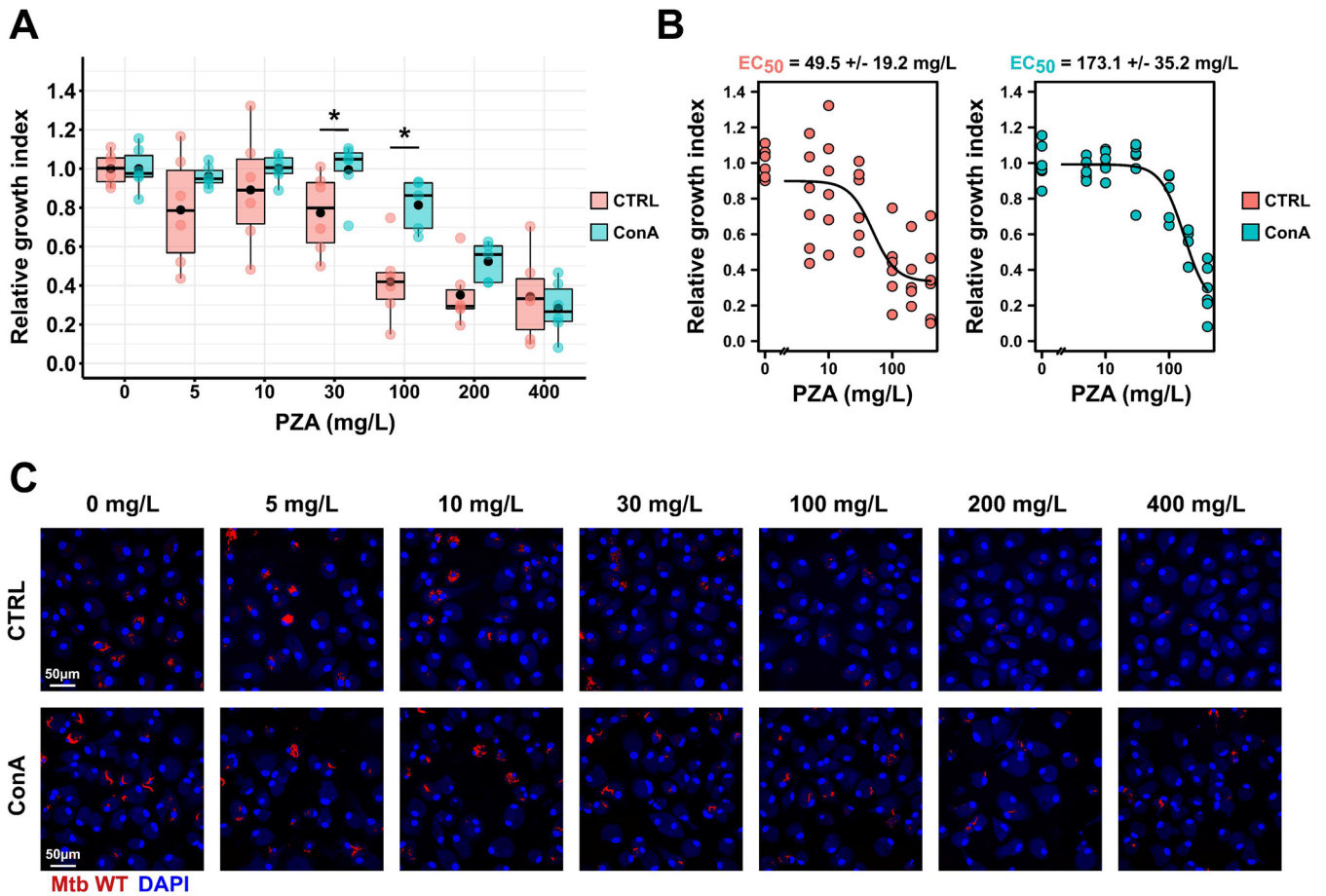


FIG 4 PZA-mediated growth inhibition requires endolysosomal acidification within human macrophages. Human macrophages were infected with *M. tuberculosis* WT E2-Crimson for 24 h and subsequently treated with increasing concentrations of PZA ranging from 0 to 400 mg/L in the absence or presence of ConA for 72 h. (A) Quantitative analysis of E2-Crimson *M. tuberculosis* WT replication at the single-cell level within MDM treated with increasing concentrations of PZA in the absence or presence of ConA. Normalization was done to the mean *M. tuberculosis* area per cell pretreatment (t_{24h} postinfection), and the control condition without PZA was used as reference corresponding to 100% growth. Determination of relative growth index was performed in the absence (pink) or presence (cyan) of v-ATPase inhibitor ConA. Results are displayed as boxplots with individual replicate data. Black dots were added to highlight the mean of each condition. Between 1,185 and 1,925 *M. tuberculosis*-infected MDM were analyzed by high-content single-cell microscopy, and results are representative of $n = 2$ biologically independent experiments performed at least in two to three technical replicates. Statistical analysis was performed using Wilcoxon signed-rank test, where untreated control was used as the reference condition (*, $P \leq 0.05$; **, $P \leq 0.01$; ***, $P \leq 0.001$). (B) Determination of PZA EC_{50} in the absence or presence of ConA by performing a 4-parameter nonlinear logistic regression of the data displayed in panel A. (C) Representative confocal fluorescence images of *M. tuberculosis* WT-infected MDM infected for 24 h and further treated for 72 h with increasing concentrations of PZA. Magnifications display nuclear staining (blue) and *M. tuberculosis* producing E2-Crimson (red). Scale bar corresponds to 50 μm . Micrographs are representative of 2 independent experiments.

***M. tuberculosis* mutants with different subcellular localizations show distinct PZA susceptibility profiles in cellulo.**

To define how intracellular localization contributes to PZA/POA antibacterial efficacy, we assessed PZA-mediated pH homeostasis disruption and growth inhibition toward multiple *M. tuberculosis* mutants with distinct intracellular lifestyles (Fig. 5A). Mtb WT (wild type) harboring a functional ESX-1 secretion system was used as the reference strain, and Mtb $\Delta RD1$ lacking a functional ESX-1 machinery was used as a phagosome-restricted strain. We also included another phagosome-restricted mutant, Mtb $\Delta esxB$, which lacks only the two major ESX-1 effectors EsxA and EsxB (also known as ESAT-6 and CFP-10). A relative growth index was quantified for each strain, and a dose-response analysis using a four-parameter logistic nonlinear regression model was performed to determine PZA EC_{50} toward each strain (Fig. 5B and C). Results obtained after curve fitting showed that EC_{50} toward the reference strain Mtb WT was 33.8 ± 8.5 mg/L. Both Mtb $\Delta RD1$ and Mtb $\Delta esxB$ displayed increased susceptibility to PZA with EC_{50} values of 13.0 ± 3.7 and 17.8 ± 7.2 mg/L, respectively. Determination of EC_{50} values further highlighted the increase in susceptibility of strains

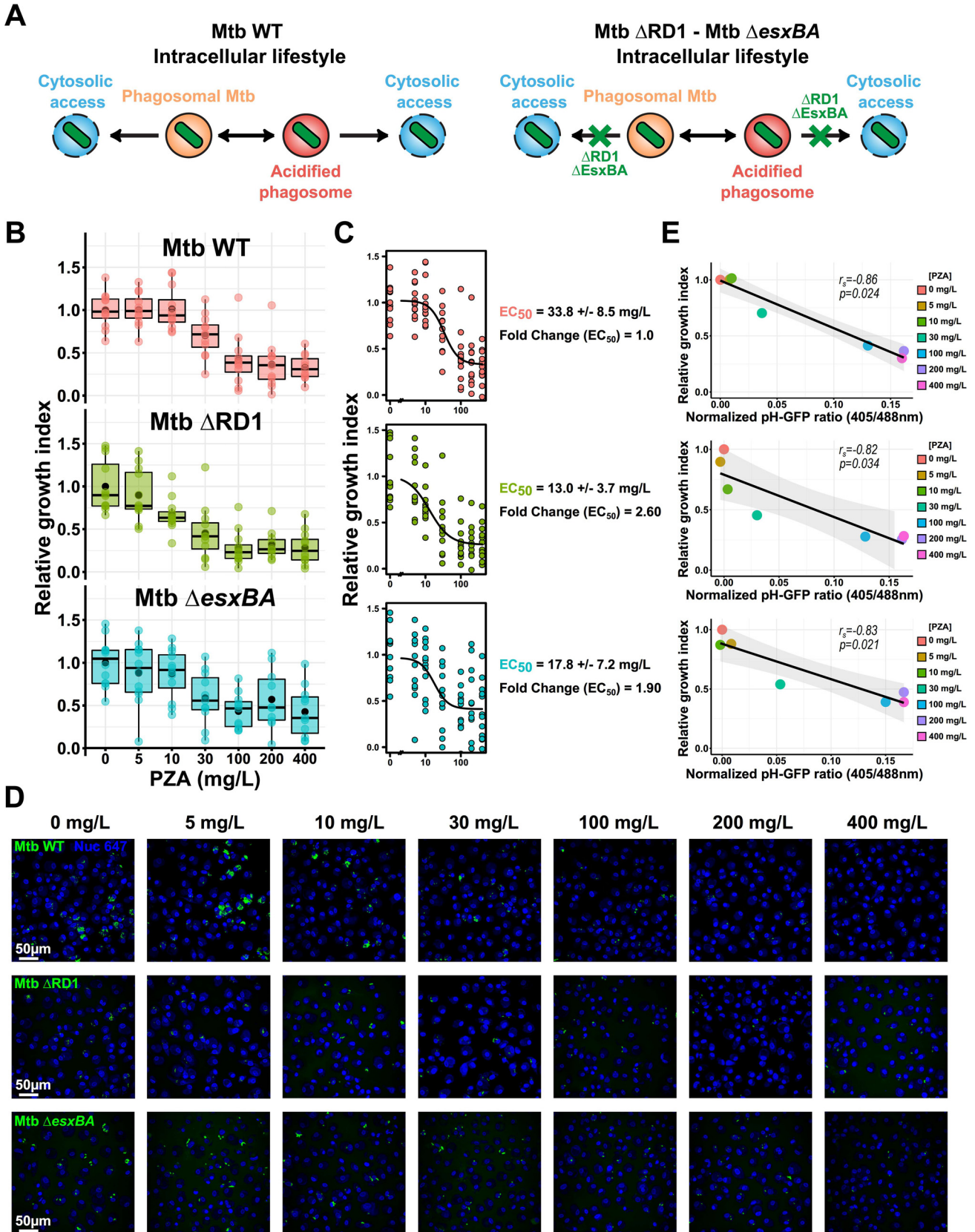


FIG 5 RD1- and EsxB-mediated endolysosomal damage partially protects *M. tuberculosis* against PZA activity *in cellulo*. Human macrophages were infected with Mtb WT, Mtb Δ RD1, or Mtb Δ esxBA for 24 h and subsequently treated with increasing concentrations of PZA ranging from 0 to 400 mg/L (Continued on next page)

unable to damage the endolysosomal membrane and access host cytosol with a 2.60- and 1.90-fold increase for Mtb Δ RD1 and Mtb Δ esxB, respectively, compared to the WT reference strain (Fig. 5C). Thus, a functional ESX-1 secretion system is protective against PZA/POA activity in *M. tuberculosis*-infected macrophages, potentially through facilitating membrane damage and cytosolic access. Previous work showed that disruption of *M. tuberculosis* intrabacterial pH homeostasis caused by pharmacological inhibitors directly correlated with a mycobactericidal effect (31). We investigated whether a PZA-mediated pH decrease was correlated with intracellular growth defects. Relative growth index values were plotted as a function of normalized pH-GFP ratios at each PZA concentration, and Spearman's correlation coefficients were determined for each strain (Fig. 5E). Notably, PZA-mediated pH homeostasis disruption strongly correlated with the intracellular replication defect (r_s values ranging from -0.82 to -0.86), suggesting that PZA-mediated intrabacterial pH disruption is an important factor in its antibacterial activity (Fig. 5E).

PZA-mediated intrabacterial pH disruption and growth inhibition in cellulo require POA conversion by functional PncA. Finally, we sought to understand whether PZA conversion to POA was essential to display its pH-disruptive property and antibacterial capacity. To answer this question, we used the bovine TB agent and zoonotic pathogen, *Mycobacterium bovis*. As a member of the *Mycobacterium tuberculosis* complex, *M. bovis* was chosen due to its ability to replicate within human macrophages (48) and its well-characterized intrinsic resistance toward PZA (49, 50). Indeed, *M. bovis* harbors a point mutation within its *pncA* gene that is responsible for the H57D substitution, which blocks PZA-to-POA conversion (49, 50). We generated a pH-GFP reporter *M. bovis* strain (Mbv pH-GFP) and assessed whether PZA-mediated pH disruption was occurring in *M. bovis*-infected MDM. As expected, without PZA-to-POA conversion, no drug-induced intrabacterial pH perturbation was noticeable against *M. bovis* (Fig. 6A and D) even at 400 mg/L. In addition, PZA intracellular activity on *M. bovis* replication was also investigated by quantitative fluorescence microscopy. In agreement with previous reports from *in vitro* studies (50), *M. bovis* was resistant to PZA *in cellulo* (Fig. 6B, C, and E). These results demonstrate that *in cellulo*, the intrabacterial pH-disruptive effect of PZA is mediated by its active form POA and that such conversion is essential for antibacterial activity within infected macrophages.

DISCUSSION

Here, we described a novel live dual-imaging approach to monitor pH homeostasis within both the host cell and the pathogen in a biosafety level 3 laboratory. This approach is applicable to both human primary monocyte-derived macrophages (MDM) and human iPSC-derived macrophages (iPSDM). In both MDM and iPSDM, ConA treatment was able to reduce *M. tuberculosis*-associated LysoTracker intensity, suggesting that this pharmacological inhibition is a powerful approach to perturb endolysosomal acidification in these two macrophage models. Quantitative analysis revealed that the regulation of *M. tuberculosis* intrabacterial pH *in cellulo* is not homogeneous with a subset of bacilli displaying a differential pH regulation as shown in *Escherichia coli in vitro*

FIG 5 Legend (Continued)

for 72 h. (A) A schematic representation of Mtb WT, Mtb Δ RD1, and Mtb Δ esxB intracellular lifestyles. The contribution of RD1 and EsxB virulence factors in membrane damage and cytosolic access is highlighted in the right panel. (B) Quantitative analysis of fluorescent *M. tuberculosis* strains replication at the single-cell level within MDM treated with increasing concentrations of PZA. Normalization was done to the mean *M. tuberculosis* area per cell pretreatment (t_{24h} postinfection), and the control condition without PZA was used as reference corresponding to 100% growth. Results are displayed as boxplots with individual replicate data. Black dots were added to highlight the mean of each condition. Between 3,880 and 10,874 *M. tuberculosis*-infected MDM were analyzed by high-content single-cell microscopy, and results are representative of $n = 4$ biologically independent experiments performed at least in two to three technical replicates. (C) Determination of PZA EC_{50} for the different *M. tuberculosis* strains by performing a 4-parameter nonlinear logistic regression of the data displayed in panel B. (D) Representative confocal fluorescence images of Mtb WT-, Mtb Δ RD1-, or Mtb Δ esxB-infected MDM infected for 24 h and further treated for 72 h with increasing concentrations of PZA. Magnifications display nuclear staining (blue) and fluorescent *M. tuberculosis* (green). Scale bar corresponds to 50 μ m. Micrographs are representative of 4 independent experiments. (E) Spearman's correlation between normalized Mtb pH-GFP ratio (405/488 nm) at 24 h posttreatment (x axis) and *M. tuberculosis* relative growth index (y axis) within infected MDM at 72 h posttreatment. Results from Mtb WT, Mtb Δ RD1, and Mtb Δ esxB are shown from the top panel to the bottom panel, respectively. The black line shows the linear regression model; the Spearman rank correlation coefficient (r_s) and the corresponding P value were calculated by using the `ggpubr` R package and two-tailed statistical t test. Results are from $n = 2$ or $n = 4$ biologically independent experiments performed at least in two to three technical replicates.

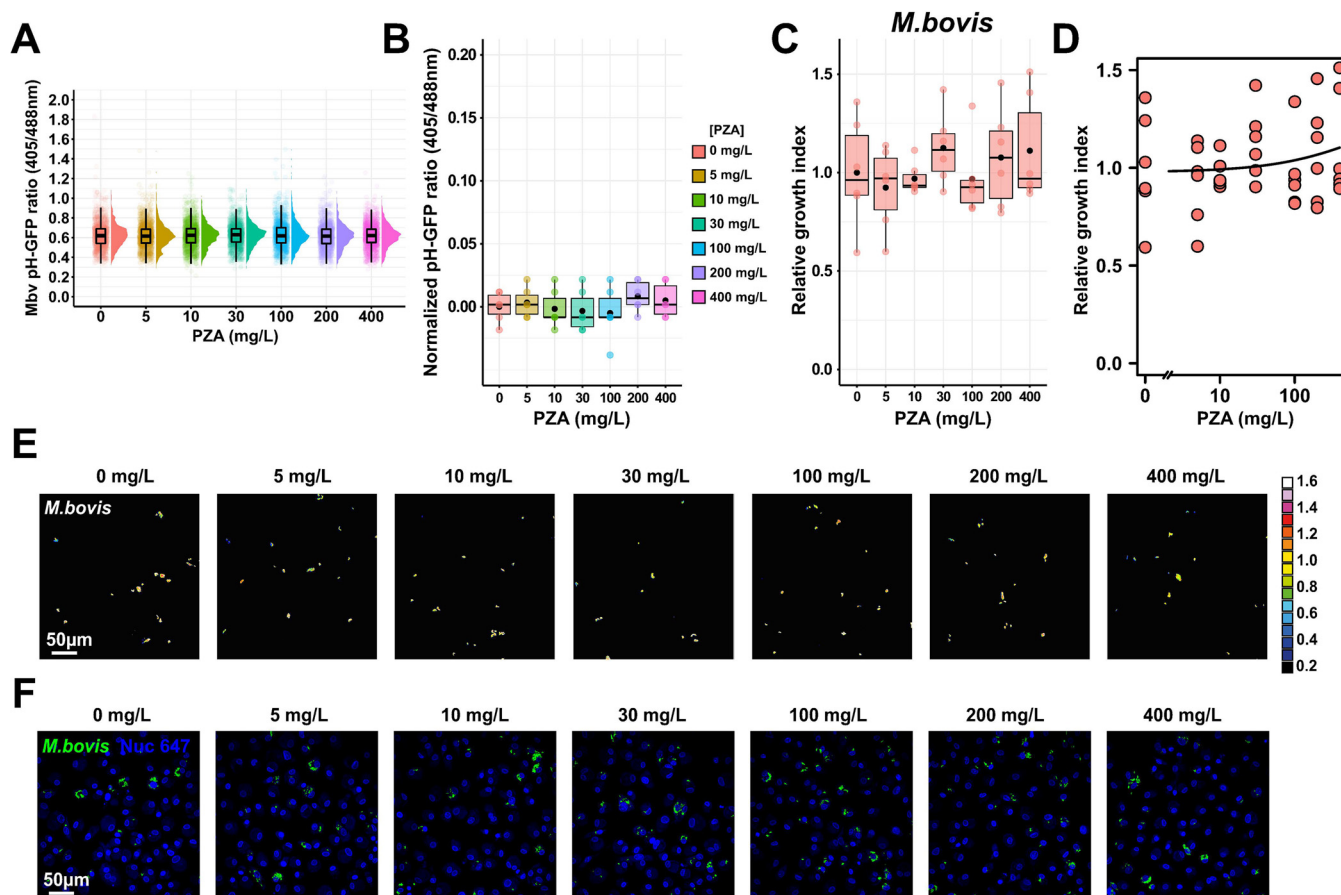


FIG 6 PZA-mediated intrabacterial pH homeostasis disruption and growth inhibition *in cellulo* require functional PncA. Human macrophages were infected with Mbv pH-GFP for 24 h and subsequently treated with increasing concentrations of PZA ranging from 0 to 400 mg/L for 24 h. Cells were then pulsed with 200 nM LysoTracker Red for 30 min before live acquisition was performed using the OPERA Phenix imaging platform. (A) Quantification of Mbv pH-GFP ratio (405/488 nm) within infected MDM treated with increasing concentrations of PZA ranging from 0 to 400 mg/L at 24 h posttreatment. Results are displayed as raincloud plots where black boxplots are overlaid on top of individual replicate data and associated with their respective density plots. Each color represents a specific PZA concentration. (B) Determination of absolute changes in Mbv pH-GFP ratio (405/488 nm) upon PZA treatment. Determination of absolute changes in Mbv pH-GFP ratio (405/488 nm) upon various antibiotic treatments. Mean pH-GFP ratio of each antibiotic treatment was subtracted from the untreated control 24 h posttreatment to obtain an absolute value reflecting antibiotic-mediated pH disruption normalized to the control. Results are displayed as boxplots with individual replicate data. Black dots were added to highlight the mean of each condition. (C and D) Human macrophages were infected with fluorescent *M. bovis* for 24 h and subsequently treated with increasing concentrations of PZA ranging from 0 to 400 mg/L for 72 h. (C) Quantitative analysis of fluorescent *M. bovis* strain replication at the single-cell level within MDM treated with increasing concentrations of PZA. Normalization was done to the mean *M. bovis* area per cell pretreatment (t_{24h} , postinfection), and the control condition without PZA was used as reference corresponding to 100% growth. Results are displayed as boxplots with individuals' raw data. Black dots were added to highlight the mean of each condition. Between 4,072 and 4,628 *M. bovis*-infected MDM were analyzed by high-content single-cell microscopy, and results are representative of $n = 2$ biologically independent experiments performed at least in two to three technical replicates. (D) Determination of PZA EC_{50} for the *M. bovis* strain by performing a 4-parameter nonlinear logistic regression of the data displayed in panel C. (E) Representative fluorescence ratiometric images of *M. bovis*-infected MDM infected for 24 h and further treated for 24 h with increasing concentrations of PZA. Ratiometric signal is displayed as a 16-color palette ranging from 0 to 1.6 units. Scale bar corresponds to 50 μ m. Micrographs are representative of 2 independent experiments. (F) Representative confocal fluorescence images of *M. bovis*-infected MDM infected for 24 h and further treated for 72 h with increasing concentrations of PZA. Magnifications display nuclear staining (blue) and fluorescent *M. bovis* (green). Scale bar corresponds to 50 μ m. Micrographs are representative of 2 independent experiments.

(51). At the intramacrophage population level, our data show that *M. tuberculosis* can maintain its own pH within endolysosomes of human macrophages, in agreement with previous findings *in vitro* and in mouse macrophages treated or not with interferon gamma (11, 31, 32). An important finding of our analysis is that impairment of endolysosomal acidification had no impact on intracellular *M. tuberculosis* pH homeostasis. Despite a very significant heterogeneity in LysoTracker association, most bacteria maintained their intracellular pH during the course of infection, suggesting that *M. tuberculosis* is very efficient at regulating intrabacterial pH in its preferred host cell.

Intracellular *M. tuberculosis* continuously switches between membrane-bound (able to retain protons and acidic) and cytosolic (host cell neutral-pH) localization (6), and here, by using live imaging of subcellular acidification, we tested the hypothesis that

when the bacterium resides in an acidic environment, the exposure to an acidic pH will reduce intrabacterial pH. Unexpectedly, we found that irrespective of the time of residence in an acidic compartment, the bacilli maintained a constant intrabacterial pH, suggesting that mycobacteria have potent mechanisms of pH sensing and homeostasis in fluctuating environments and can rapidly respond to changes (52, 53). A limitation of our study is that we are not able to define if these bacteria in an acidic host compartment are alive and able to replicate, in a nonreplicating state, or eventually dead. More studies and technical developments are required to explore this in detail. It is also important to mention that LysoTracker staining does not allow clear discrimination between pH 4.5 and 5.5; therefore, we cannot exclude the possibility that differences might occur at these distinct pH values if bacteria reside for an extensive period of time. However, previous studies in other biological models showed that pH 5.5 or even 4.5 was not altering *M. tuberculosis* pH homeostasis and survival, suggesting that *M. tuberculosis* can adapt and survive within these conditions (11, 31, 32). We also anticipate that our system can be applied to other intracellular bacteria that temporarily inhabit acidic compartments, such as *Salmonella* spp., *Shigella* spp., or *Coxiella burnetii*.

Our dual imaging allowed us to define if, in macrophages, the localization in acidic compartments affected the intrabacterial pH after treatment with antibiotics used in the clinic to treat tuberculosis. Remarkably, out of four antibiotics, each with different modes of action, we found that in human macrophages, only PZA disrupts *M. tuberculosis* intrabacterial pH homeostasis in a concentration- and time-dependent manner. For BDQ, which is effective against *M. tuberculosis* within infected human macrophages (44, 54), we could confirm that treatment targets bacteria to acidic compartments (44), however, without resulting in significant changes in intrabacterial pH, as was previously suggested as one of the modes of action of BDQ (45) but not all the diarylquinolines (46, 47). This also suggests that intrabacterial pH imaging is not a reliable proxy of bacterial viability (at least in this system). Our findings seem to be different from what has been previously observed with *Mycobacterium smegmatis*, where it was proposed that global antibiotic-induced pH alterations should be considered a potential mechanism contributing to antibiotic efficacy (55).

The studies of the PZA molecular mechanism(s) of action, and its extensive association with acidic pH for efficacy, have been mostly performed *in vitro* (25, 28–30). These studies have shown that acidic environments promote PZA/POA efficacy under specific culture conditions. However, these results have also been challenged by other studies (34, 35). Indeed, inhibitory activity of PZA/POA has been reported in neutral media and in phosphate-buffered saline (PBS) buffer, suggesting that exogenous protons are not essential for the antimycobacterial action of these molecules (34, 35). Here, by using human MDM and iPSDM models, we provide compelling evidence that PZA and POA disrupt *M. tuberculosis* intrabacterial pH homeostasis *in cellulo*. These changes in intrabacterial pH homeostasis can be prevented by inhibiting the macrophage v-ATPase activity with ConA, likely impairing the conversion of POA⁽⁻⁾ into HPOA inside endolysosomes. The significant effect of ConA in preventing the pH disruption correlates with an increase in bacterial growth, showing that there is a link between pH disruption and antibacterial efficacy, as previously described (31). This link between intrabacterial pH alteration and efficacy seems to apply only to PZA, since the other three very potent antibiotics we tested, BDQ, RIF, and INH, are also effective against intracellular *M. tuberculosis* without affecting the intrabacterial pH.

Finally, by combining our dual-imaging approach with mycobacterial mutants and naturally PZA-resistant strains, we were able to define if intracellular localization affects the pH-disruption-related efficacy of PZA. Notably, two different mutants with a deficient ESX-1 secretion system showed a substantial reduction in growth compared to the wild-type strain after PZA treatment, a finding that reflects the increase in PZA accumulation reported previously (23). Indeed, nanoscale secondary-ion mass spectrometry (NanoSIMS) analysis of PZA/POA accumulation showed that two times more Δ RD1 bacteria were positive for this antibiotic in comparison to the WT strain (23),

which supports the 2-fold difference in PZA EC_{50} we observed in this study. Similarly, ConA treatment negatively impacted by 3 to 4 times the amount of WT bacteria displaying a positive signal for the antibiotic by NanoSIMS (23), which was reflected by the 3.5-fold difference in antibacterial efficacy when analyzing the EC_{50} of PZA alone or in combination with ConA in the present study. Such results suggest a strong correlation between antibiotic accumulation and antibacterial efficacy as previously reported using bulk liquid chromatography-tandem mass spectrometry (LC-MS/MS) analysis (56). The use of mutants with different lifestyles in our experimental system has highlighted that cytosolic localization can be an important factor that dictates antibiotic susceptibility *in cellulo*. Our data with ESX-1-defective mutants suggest that continuous and homogenous residence in a phagosome affects sensitivity to PZA and subsequently intrabacterial pH homeostasis disruption.

Within macrophages, *M. bovis* was not sensitive to PZA, which did not affect intrabacterial pH, suggesting that POA, but not PZA, is primarily responsible for the pH disruption effect. This confirms that POA is the main active form of the drug and that its inhibitory effect is tightly linked to pH *in cellulo*. Importantly, our results show that PZA accumulation and efficacy require acidic environments within host cells, highlighting that the pH-dependent mechanism of action is crucial in more sophisticated biological systems (37). It is worth mentioning that the results obtained in this study are different from the one described *in vitro* by Peterson et al. (35) showing that PZA/POA did not induce pH homeostasis disruption even at pH 5.8. These discrepancies could be explained by some differing experimental parameters including differences between *in cellulo* and *in vitro* investigations, the use of H37Ra and H37Rv strains, and the increased sensitivity of fluorescence microscopy in contrast to bulk spectrofluorimetric analysis. Our quantitative imaging analysis showed that PZA-mediated *M. tuberculosis* intrabacterial pH perturbations *in cellulo* were significant. However, some of the effects were moderate, supporting the idea that sensitivity is an important factor to detect these changes. Our findings are in agreement with a study showing that PZA disrupts *M. tuberculosis* intrabacterial pH in a dose-dependent manner when incubated *in vitro* within phosphate citrate buffer pH 4.5 (31). These initial findings, obtained with an *M. tuberculosis* strain that expresses a pH-sensitive ratiometric GFP, were also monitored by spectrofluorimetry and confirmed (57). Finally, an alternative method relying on the use of chemical probes was able to show that POA triggers *M. tuberculosis* intrabacterial pH disruption in an external pH-dependent manner (32), highlighting how the results regarding PZA/POA-mediated pH homeostasis disruption remain unclear *in vitro* (36, 37).

In the last years, several studies have shown that PZA/POA can inhibit *M. tuberculosis* growth independently of the presence of exogenous protons by targeting the aspartate decarboxylase enzyme PanD (38–41). In this proposed mode of action, POA covalently binds to PanD and promotes its degradation by the Clp system, thus inhibiting coenzyme A synthesis (38–41). To date, little is known regarding the effect of coenzyme A depletion in *M. tuberculosis* with respect to cell wall integrity, global metabolism, and pH homeostasis. Therefore, more studies in our experimental system will be required to determine whether PanD inhibition or depletion could be linked to *M. tuberculosis* intrabacterial pH alterations. These studies have the potential to bring new insights onto PZA/POA mode(s) of action and potentially define if these compounds trigger the collapse of *M. tuberculosis* intrabacterial pH directly by shuttling protons through the cell wall or indirectly by impacting global homeostatic properties.

Finally, a recent study using genome-wide transposon sequencing showed that specific cellular pathways stimulated in a pH-dependent manner are linked to PZA susceptibility (58). In that context, the authors observed that the SigE-mediated response is central to conditional PZA susceptibility, adding more evidence that external pH is a critical factor that drives PZA susceptibility (58). Because *M. tuberculosis* displays a heterogeneous subcellular localization, where a fraction of *M. tuberculosis* is localized in phagosomes but another fraction is in the cytosol, we postulate that dynamic and

heterogeneous environments contribute to the pH-disruptive action of PZA/POA in human macrophages, by potentially activating prosusceptible pathways (58) and enhancing drug enrichment within *M. tuberculosis* (23). The imaging approach developed here together with the concepts that have emerged from this study could be valuable to characterize antibiotic modes of action *in cellulo*.

MATERIALS AND METHODS

Mycobacterial strains and culture conditions. *Mycobacterium tuberculosis* H37Rv and Δ RD1 strains were obtained from William R. Jacobs, Jr. (Albert Einstein College of Medicine, New York, NY, USA); Suzie Hingley-Wilson (University of Surrey, Guilford, UK); and Douglas B. Young (The Francis Crick Institute, London, UK). The *Mycobacterium bovis* AF2122/97 reference strain was provided by Stephen V. Gordon (University College Dublin, Dublin, Ireland). Mtb Δ esxB mutant was generated in our laboratory by using the ORBIT system, genetically mapped by PCR, and sequenced (B. Aylan, E.M. Bernard, E. Pellegrino, L. Botella, C. Bussi, P. Santucci, N. Athanasiadi and M.G. Gutierrez, under review). Its respective complement Mtb Δ esxB::esxB was generated by transformation with a mycobacterial kanamycin-resistant integrative vector carrying a functional copy of esxB genes under the control of the Psmc promoter (Aylan et al., under review). Both clones did not show any growth impairment *in vitro* and were validated based on ESAT-6 and CFP-10 production and secretion by conventional immunoblotting (Aylan et al., under review). Recombinant *M. tuberculosis* or *M. bovis* strains expressing pH-GFP (pUV15-pHGFP; Addgene plasmid no. 70045, kindly gifted by Sabine Ehrtr), red fluorescent protein (RFP) (pML2570), or E2-Crimson (pTEC19; Addgene plasmid no. 30178, kindly gifted by Lalita Ramakrishnan) fluorescent protein were generated by electroporation and further selected onto appropriate medium. Recombinant *M. tuberculosis* strains were grown in Middlebrook 7H9 broth supplemented with 0.2% (vol/vol) glycerol (Fisher Chemical, G/0650/17), 0.05% (vol/vol) Tween 80 (Sigma-Aldrich, P1754), and 10% (vol/vol) albumin-dextrose-catalase (ADC) (BD Biosciences, 212352) whereas recombinant *M. bovis* strains expressing pH-GFP or RFP were grown in Middlebrook 7H9 supplemented with 40 mM sodium pyruvate (Sigma-Aldrich, P2256). Bacterial cultures (10 mL) were incubated under constant rotation in 50-mL conical tubes at 37°C. Hygromycin B (Invitrogen, 10687010), kanamycin (Sigma-Aldrich, K1876), or zeocin (InvivoGen, ant-zn-05) was used as a selection marker for the fluorescent strains at a concentration of 50 mg/L, 25 mg/L, or 25 mg/L, respectively. All selected clones were tested for PDIM positivity by thin-layer chromatography of lipid extracts from cultures prior to performing infection experiments.

Preparation and culture of human monocyte-derived macrophages. Human monocyte-derived macrophages (MDM) were prepared from leukocyte cones (NC24) supplied by the NHS Blood and Transplant service as previously described (15, 23, 54). Briefly, white blood cells were isolated by centrifugation on Ficoll-Paque Premium (GE Healthcare, 17-5442-03) for 60 min at 300 × g. Mononuclear cells were collected and washed twice with magnetically activated cell sorting (MACS) rinsing solution (Miltenyi, 130-091-222). Cells were subsequently incubated with 10 mL red blood cell (RBC) lysing buffer (Sigma, R7757) at room temperature. After 10 min, cells were washed with rinsing buffer and then were resuspended in 80 μ L MACS rinsing solution supplemented with 1% bovine serum albumin (MACS/BSA) (Miltenyi, 130-091-376) and 20 μ L anti-CD14 magnetic beads (Miltenyi, 130-050-201) per approximately 10⁸ cells. After 20 min at 4°C, cells were washed in MACS/BSA solution, resuspended at a concentration of 2 × 10⁸ cells/mL in MACS/BSA, and further passed through a preequilibrated LS column (Miltenyi, 130-042-401) in the field of a QuadroMACS separator magnet (Miltenyi, 130-090-976). The LS column was washed three times with MACS/BSA solution, and then CD14-positive cells were eluted, centrifuged, and resuspended in complete RPMI 1640 with GlutaMAX and HEPES (Gibco, 72400-02), 10% fetal bovine serum (Sigma, F7524) containing 10 ng/mL of human granulocyte-macrophage colony-stimulating factor (hGM-CSF) (Miltenyi, 130-093-867). Differentiation was performed by plating approximately 10⁶ cells/mL in untreated petri dishes and further incubating them in a humidified 37°C incubator with 5% CO₂. After 3 days, an equal volume of fresh complete medium including hGM-CSF was added. Six days after the initial isolation, differentiated macrophages were detached in 0.5 mM EDTA in ice-cold PBS using cell scrapers (Sarstedt, 83.1830), pelleted by centrifugation, and resuspended in complete RPMI 1640 medium containing 10% fetal bovine serum where cell count and viability were estimated (Bio-Rad, TC20 automated cell counter) before plating for experiments.

Human-induced pluripotent stem cell culture and human-induced pluripotent stem cell-derived macrophage preparation. Human iPSC maintenance and iPSCDM preparation were performed as recently reported (18). Briefly, KOLF2 iPSCs (HPS10114i-kolf_2 iPSCs; Public Health England Culture Collections, catalog no.77650100) were maintained in Vitronectin XF (StemCell Technologies, 100-0763)-coated plates with E8 medium (ThermoFisher Scientific, A1517001) in a humidified 37°C incubator with 5% CO₂. Cells were passaged by performing a 1/6 dilution when reaching approximately 70% confluence using Versene (Gibco, 15040066). Monocyte factories were set up following a previously reported protocol (59). A single-cell suspension of iPSCs was generated in E8 medium containing 10 μ M Y-27632 ROCK inhibitor (StemCell Technologies, 72307), seeded into AggreWell 800 plates (StemCell Technologies, 34815) with approximately 4 × 10⁶ cells/well, and centrifuged at 100 × g for 5 min. The forming embryonic bodies (EBs) were fed daily with two 50% medium changes with E8 medium supplemented with 50 ng/mL hBMP4 (Peprotech, 120-05ET), 50 ng/mL human vascular endothelial growth factor (hVEGF) (Peprotech, 100-20), and 20 ng/mL human stem cell factor (hSCF) (Peprotech, 300-07) for 3 days. On day 4, the EBs were harvested by flushing out of the well with gentle pipetting and filtered through an inverted 40- μ m cell strainer. EBs were seeded at 250 to 300 per T225 flask in factory medium consisting

of X-VIVO 15 (Lonza, BE02-061Q) supplemented with GlutaMAX (Gibco, 35050061), 50 μ M β -mercaptoethanol (Gibco, 21985023), 100 ng/mL hM-CSF (Peprotech, 300-25), and 25 ng/mL human interleukin-3 (hIL-3) (Peprotech, 200-03). Monocyte factories were fed once per week with factory medium for 4 to 5 weeks until monocyte production was observed in the supernatant. Up to 50% of the supernatant was harvested weekly, and factories were fed with 20 to 30 mL factory medium. For differentiation, the supernatant was centrifuged and cells were resuspended in X-VIVO 15 supplemented with GlutaMAX and 20 ng/mL hGM-CSF and plated at 12×10^6 cells per 15-cm petri dish to differentiate over 7 days, where a 50% medium change was performed on day 4. Seven days after the initial plating, differentiated macrophages were detached with EDTA (Gibco, 15040066) for 15 min at 37°C and 5% CO₂. Versene was further diluted 1:3 with PBS, and cells were gently detached with cell scrapers (Sarstedt, 83.1830), pelleted by centrifugation, and resuspended in X-VIVO 15 plus GlutaMAX where cell count and viability were estimated (Bio-Rad, TC20 automated cell counter) before plating for experiments.

Macrophage infection with *M. tuberculosis* and *M. bovis* strains. For macrophage infection, mycobacterial inoculum was prepared following a well-established procedure (15, 42). First, bacterial cultures were pelleted by centrifuging approximately 10 mL of mid-exponential-phase cultures (optical density at 600 nm [OD₆₀₀] = 0.6 \pm 0.2) at 4,000 rpm for 5 min. Pellets were washed twice in sterile PBS buffer (pH 7.4), and then, an equivalent volume of sterile 2.5- to 3.5-mm autoclaved glass beads was added to individual pellets and bacterial clumps were disrupted by vigorous shaking. Bacteria were resuspended in the appropriate cell culture medium, and the clumps were removed by low-speed centrifugation at 1,200 rpm for 5 min. The supernatant containing the bacterial suspension of interest was transferred to a fresh tube, and OD₆₀₀ was measured to determine bacterial concentration. In this protocol, it was assumed that an OD₆₀₀ of 1 approximates 10⁸ bacteria/mL. For high-content dual-imaging experiments and intracellular antibiotic assays, macrophages were infected with mycobacterial strains at a multiplicity of infection (MOI) of 1 for 2 h at 37°C. After 2 h of uptake, cells were washed with PBS to remove extracellular bacteria and fresh medium was added.

High-content dual-live fluorescence imaging, determination of *M. tuberculosis* intrabacterial pH-GFP fluorescence ratio, and *M. tuberculosis*-associated LysoTracker intensity. For high-content live-cell imaging, cells were infected with fluorescent mycobacteria producing ratiometric pH-GFP at an MOI of 1 as described above. After 24 h, the culture medium was replaced by fresh medium only or fresh medium containing 50 nM ConA (Sigma-Aldrich, C9705) for iPSDM and 100 nM ConA for MDM. After 24 h, infected cells were washed once with PBS buffer (pH 7.4) and stained with complete medium containing 200 nM LysoTracker Red DND-99 (Invitrogen, L7528) in a humidified 37°C incubator with 5% CO₂. After 30 min, staining medium was removed and replaced with fresh medium containing NucRed Live 647 ReadyProbes (Invitrogen, R37106) following the manufacturer's recommendations to facilitate cell detection. Live-cell imaging was further performed using the OPERA Phenix microscope with a 63 \times water-immersion objective. Image acquisition was performed with the confocal mode using the default autofocus function and a binning of 1. Mtb pH-GFP signal was detected using excitation wavelength (λ_{ex}) 405 nm/emission wavelength (λ_{em}) 500 to 550 nm and λ_{ex} 488 nm/ λ_{em} 500 to 550 nm, LysoTracker signal was detected using λ_{ex} 561 nm/ λ_{em} 570 to 630 nm, and NucRed Live signal was detected using λ_{ex} 640 nm/ λ_{em} 650 to 760 nm. Laser power for all channels was set between 20% and 30% with an exposure time of 200 ms. Each channel was imaged independently, and a minimum of 3 to 4 distinct focal z-planes spaced with 0.5 to 1 μ m was acquired. Multiple fields of view (323 μ m by 323 μ m) from each individual well were imaged with a set overlap of 10% in between fields. Segmentation and analysis were performed using the Harmony software (Perkin-Elmer, version 4.9). Briefly, cellular region was detected based on the fluorescent signals in the far-red emission channel using the "Find Image Region" building block and the "Absolute Threshold" function. Intracellular Mtb pH-GFP was detected based on the GFP signal obtained into both λ_{ex} 405 nm/ λ_{em} 500 to 550 nm and λ_{ex} 488 nm/ λ_{em} 500 to 550 nm channels using the "Find Image Region" building block and the "Absolute Threshold" function. Signals from the two GFP channels were merged using the "Calculate Image" building block and the function "By Formula," where a channel A+B operation was applied. This combined image was filtered to reduce background noise using the "Filter Image" building block and a sliding parabola function. This *M. tuberculosis* mask was used to quantify Mtb pH-GFP mean fluorescent signal per single object from both 405-nm/510-nm and 488-nm/510-nm channels. Ratiometric signals were obtained by dividing the mean intensity quantified at λ_{ex} 405 nm/ λ_{em} 500 to 550 nm by the one obtained at λ_{ex} 488 nm/ λ_{em} 500 to 550 nm for each object. To quantify *M. tuberculosis*-associated LysoTracker intensity, the *M. tuberculosis* mask was slightly extended using the "Find Surrounding Region" building block using method A with an individual threshold value of 0.8 and conservation of the input region. When assessing the spatiotemporal mode of action of PZA, human macrophages were infected for 24 h and further treated with increasing concentrations of PZA ranging from 0 to 400 mg/L in the absence or presence of ConA for an additional 4, 16, 24, or 72 h before acquisition was performed as described above. When assessing anti-TB drug-mediated pH disruption, *M. tuberculosis*-infected cells were left untreated or pulsed with PZA (100 mg/L), BDQ (2.5 mg/L), INH (5 mg/L), or RIF (5 mg/L) for 24 h before imaging. Determination of absolute changes of pH-GFP ratio relative to the control condition (also referred as Δ intrabacterial pH) was done by subtracting the value obtained under each experimental condition from its corresponding control condition. All the results were exported as CSV files, imported in the R Studio software (The R Project for Statistical Computing, version 1.3.1073), and most of the graphs, displayed as boxplots, scatterplots, or raincloud plots, were plotted with the ggplot2 package (version 3.3.2).

Low-content dual-live fluorescence imaging and live-cell imaging. For low-content dual imaging and live-cell imaging, experimental setup and acquisition were performed as previously described (18, 42, 60) with slight modifications. Approximately 1×10^6 iPSDM were seeded within 12-mm-aperture

glass-bottom dishes (WillCo dish, GWST-3512) in 1 mL of X-VIVO 15 medium plus GlutaMAX. Adherent cells were infected with fluorescent *M. tuberculosis* producing ratiometric pH-GFP at an MOI of 1 as described above, and after 24 h of infection, medium was replaced with complete medium containing 200 nM LysoTracker Red DND-99 (Invitrogen, L7528). The dish was placed on a custom-made 35-mm dish holder and further incubated in a humidified 37°C incubator with 5% CO₂. After 30 min of staining, the dish was set under a Leica SP5 laser scanning confocal microscope (Leica Biosystems) in an environmental control chamber providing 37°C, 5% CO₂, and 20 to 30% humidity for an additional 1 h to avoid drifting issues upon acquisition. Image acquisition was performed with an HC PL APO CS2 63×/1.40 oil objective. Images of 1,024 by 1,024 pixels were acquired with diode 405-nm, argon 488-nm, and diode-pumped solid-state (DPSS) 561-nm lasers where intensities were set up as 2%, 8%, and 8%, respectively. Emitted signal was collected at λ_{em} 510 ± 30 nm and λ_{em} 585 ± 15 nm for pH-GFP and LysoTracker channels, respectively. One single Z-plane was acquired for each field, and a minimum of 5 fields per biological sample were imaged. Determination of the Mtb pH-GFP ratio and *M. tuberculosis*-associated LysoTracker mean intensity values was performed by manual quantification as previously described (18, 23). Briefly, the mROI were duplicated, the bacterium-containing channel was manually thresholded, and a single 'Dilate' command was applied to generate a binary mask in Fiji corresponding to the bacteria surrounded by one single ring of pixel. This mask was then used to measure the mean fluorescence intensity of pixels in λ_{ex} 405 nm/ λ_{em} 510 ± 30 nm, λ_{ex} 488 nm/ λ_{em} 510 ± 30 nm, and λ_{ex} 510 nm/ λ_{em} 585 ± 15 nm channels using the command 'Measure'.

For live-cell imaging a very similar experimental setup was used where images were acquired at 30-min intervals over a time frame of 6 h to minimize photobleaching and phototoxicity. The same settings were used, and 16 z-stacks of approximately 500 nm were performed to catch most of the events contained within *M. tuberculosis*-infected cells. mROI were defined and tracked manually by selecting the appropriate focal plane over the course of the kinetics as previously described. Selected planes were then combined using the 'Concatenate' command in Fiji (60). Determination of Mtb pH-GFP and its respective LysoTracker-associated mean intensity was performed as mentioned above and further analyzed over time. All the results were exported as CSV files, imported in the R Studio software (The R Project for Statistical Computing, version 1.3.1073), and the graphs were plotted with the ggplot2 package (version 3.3.2).

Intracellular replication assays in *M. tuberculosis*- and *M. bovis*-infected macrophages. Intracellular replication assays were performed by high-content fluorescence quantitative imaging as previously described (23, 54). Briefly, 3.5×10^4 to 4.0×10^4 cells per well were seeded into an olefin-bottomed 96-well plate (Perkin-Elmer, 6055302) 16 to 20 h prior to infection. Cells were infected as described above with pH-GFP or E2-Crimson-producing strains for 24 h, and the culture medium was replaced by fresh media containing increasing concentrations of PZA, RIF, INH, or BDQ or left untreated. When indicated, fresh medium containing 50 nM ConA for iPSDM and 100 nM ConA for MDM (Sigma-Aldrich, C9705) was added together with the antibiotics. At the required time points, infected cells were washed with PBS buffer (pH 7.4) and fixed with 4% methanol-free paraformaldehyde (Electron Microscopy Sciences, 15710) in PBS buffer (pH 7.4) for 16 to 20 h at 4°C. Fixative was removed, and cells were washed in PBS buffer (pH 7.4) before performing the appropriate nuclear staining using either DAPI (4',6-diamidino-2-phenylindole; Invitrogen, D1306) or NucRed Live 647 ReadyProbes (Invitrogen, R37106) for nuclear visualization. Image acquisition was performed with the OPERA Phenix high-content microscope with a 40× water-immersion 1.1-numerical-aperture (NA) objective. The confocal mode with default autofocus and a binning of 1 was used to image multiple fields of view (323 μ m by 323 μ m) from each individual well with 10% overlapping, where acquisition was performed at 4 distinct focal planes spaced with 1 or 2 μ m. Imaging of stained nuclei and fluorescent bacteria was done with similar $\lambda_{ex}/\lambda_{em}$ settings as described above. Analysis was performed using the Harmony software (Perkin-Elmer, version 4.9) where maximum projection of the 3 to 4 z-planes was used to perform single-cell segmentation by using the "Find nuclei" and "Find cells" building blocks. Cells on the edges were excluded from the analysis. The fluorescent bacterial signal was detected using the "Find Image Region" building block where a manual threshold was applied to accurately perform bacterial segmentation. The *M. tuberculosis* area per cell was determined by quantifying the total area (expressed in square micrometers) of GFP⁺ or E2-Crimson⁺ signal per single macrophage. The relative growth index was determined by using the formula (mean Mtb area per cell t_{96h} - mean Mtb area per cell t_{24h})/(mean Mtb area per cell t_{24h}), where Mtb stands for *M. tuberculosis*, and the relative values were obtained by using the untreated control as a reference of 100% growth (0% inhibition). All the results were exported as CSV files, imported in the R Studio software (The R Project for Statistical Computing, version 1.3.1073), and graphs were plotted with the ggplot2 package (version 3.3.2).

Quantification and statistical analysis. Results displayed were obtained from $n = 2$, $n = 3$, or $n = 4$ biologically independent experiments performed at least each time in two to three technical replicates (unless otherwise stated). The statistical tests used, the number of biologically independent replicates, the number of technical replicates, and the number of single cells or single mROI analyzed are indicated in each figure legend. Statistical analysis by pairwise comparison was performed using Wilcoxon signed-rank test with the 'wilcox.test()' function in R where differences were considered statistically significant when $P \leq 0.05$. Statistical analysis is displayed in the figure as *, $P \leq 0.05$; **, $P \leq 0.01$; or ***, $P \leq 0.001$, or alternatively as #, $P \leq 0.05$; ##, $P \leq 0.01$; ###, $P \leq 0.001$. All the P values contained in the text or the figures are relative to the control condition (unless otherwise stated). Spearman rank correlation coefficient (r_s) and its corresponding P value were calculated by using the ggpubr R package and assessed by two-tailed statistical t test.

Data and code availability. All data reported in this paper will be shared by the lead contact upon reasonable request. This paper does not report original code.

SUPPLEMENTAL MATERIAL

Supplemental material is available online only.

FIG S1, PDF file, 0.5 MB.

FIG S2, PDF file, 0.9 MB.

FIG S3, PDF file, 0.9 MB.

FIG S4, PDF file, 0.5 MB.

FIG S5, PDF file, 0.9 MB.

FIG S6, PDF file, 1 MB.

ACKNOWLEDGMENTS

We acknowledge all members of the Host-Pathogen Interactions in Tuberculosis laboratory for insightful discussions. We thank D. Branch Moody for critical reading of the manuscript and helpful discussions.

This work was supported by the Francis Crick Institute (to M.G.G.), which receives its core funding from Cancer Research UK (FC001092), the UK Medical Research Council (FC001092), and the Wellcome Trust (FC001092). This project has also received funding from the European Research Council (ERC) under the European Union's Horizon 2020 research and innovation program (grant agreement no. 772022). C.B. has received funding from the European Respiratory Society and the European Union's H2020 research and innovation program under the Marie Skłodowska-Curie grant agreement no. 713406. P.S. is supported with a nonstipendiary FEBS long-term fellowship and has received funding from the European Union's H2020 research and innovation program under the Marie Skłodowska-Curie grant agreement *SpaTime_AnTB* no. 892859.

The funders had no influence on the design of the study and collection, analysis, and interpretation of data and in writing the manuscript. For the purpose of Open Access, the author has applied a CC BY public copyright license to any Author Accepted Manuscript version arising from this submission.

P.S. and M.G.G. conceived the study and designed the experiments. P.S. performed most of the experiments with help from B.A., L.B., E.M.B., C.B., E.P., and N.A. All authors provided intellectual input by analyzing and/or discussing data. P.S. and M.G.G. wrote the manuscript. All authors read the manuscript and provided critical feedback before submission.

We declare no competing interests.

REFERENCES

1. WHO. 2021. Global tuberculosis report 2021. WHO, Geneva, Switzerland.
2. Gülbay BE, Gürkan ÖU, Yıldız ÖA, Önen ZP, Erkeköl FÖ, Baççioğlu A, Acıcan T. 2006. Side effects due to primary antituberculosis drugs during the initial phase of therapy in 1149 hospitalized patients for tuberculosis. *Respir Med* 100:1834–1842. <https://doi.org/10.1016/j.rmed.2006.01.014>.
3. Cadena AM, Fortune SM, Flynn JL. 2017. Heterogeneity in tuberculosis. *Nat Rev Immunol* 17:691–702. <https://doi.org/10.1038/nri.2017.69>.
4. Lenaerts A, Barry CE, III, Dartois V. 2015. Heterogeneity in tuberculosis pathology, microenvironments and therapeutic responses. *Immunol Rev* 264:288–307. <https://doi.org/10.1111/imr.12252>.
5. Cohen SB, Gern BH, Delahaye JL, Adams KN, Plumlee CR, Winkler JK, Sherman DR, Gerner MY, Urdahl KB. 2018. Alveolar macrophages provide an early *Mycobacterium tuberculosis* niche and initiate dissemination. *Cell Host Microbe* 24:439–446.e4. <https://doi.org/10.1016/j.chom.2018.08.001>.
6. Bussi C, Gutierrez MG. 2019. *Mycobacterium tuberculosis* infection of host cells in space and time. *FEMS Microbiol Rev* 43:341–361. <https://doi.org/10.1093/femsre/fuz006>.
7. Stewart GR, Patel J, Robertson BD, Rae A, Young DB. 2005. Mycobacterial mutants with defective control of phagosomal acidification. *PLoS Pathog* 1:269–278. <https://doi.org/10.1371/journal.ppat.0010033>.
8. Pethe K, Swenson DL, Alonso S, Anderson J, Wang C, Russell DG. 2004. Isolation of *Mycobacterium tuberculosis* mutants defective in the arrest of phagosome maturation. *Proc Natl Acad Sci U S A* 101:13642–13647. <https://doi.org/10.1073/pnas.0401657101>.
9. Brodin P, Poquet Y, Levillain F, Peguillet I, Larrouy-Maumus G, Gilleron M, Ewann F, Christophe T, Fenistein D, Jang J, Jang MS, Park SJ, Raugier J, Carralot JP, Shrimpton R, Genovesio A, Gonzalo-Asensio JA, Puzo G, Martin C, Brosch R, Stewart GR, Gicquel B, Neyrolles O. 2010. High content phenotypic cell-based visual screen identifies *Mycobacterium tuberculosis* acyltrehalose-containing glycolipids involved in phagosome remodeling. *PLoS Pathog* 6:e1001100. <https://doi.org/10.1371/journal.ppat.1001100>.
10. MacGurn JA, Cox JS. 2007. A genetic screen for *Mycobacterium tuberculosis* mutants defective for phagosome maturation arrest identifies components of the ESX-1 secretion system. *Infect Immun* 75:2668–2678. <https://doi.org/10.1128/IAI.01872-06>.
11. Vandal OH, Pierini LM, Schnappinger D, Nathan CF, Ehrt S. 2008. A membrane protein preserves intrabacterial pH in intraphagosomal *Mycobacterium tuberculosis*. *Nat Med* 14:849–854. <https://doi.org/10.1038/nm.1795>.
12. Levitte S, Adams KN, Berg RD, Cosma CL, Urdahl KB, Ramakrishnan L. 2016. Mycobacterial acid tolerance enables phagolysosomal survival and establishment of tuberculous infection in vivo. *Cell Host Microbe* 20:250–258. <https://doi.org/10.1016/j.chom.2016.07.007>.
13. Augenreich J, Arbus A, Simeone R, Haanappel E, Wegener A, Sayes F, Le Chevalier F, Chalut C, Malaga W, Guilhot C, Brosch R, Astarie-Dequeker

- C. 2017. ESX-1 and phthiocerol dimycocerosates of *Mycobacterium tuberculosis* act in concert to cause phagosomal rupture and host cell apoptosis. *Cell Microbiol* 19(7). <https://doi.org/10.1111/cmi.12726>.
14. Barczak AK, Avraham R, Singh S, Luo SS, Zhang WR, Bray MA, Hinman AE, Thompson M, Nietupski RM, Golas A, Montgomery P, Fitzgerald M, Smith RS, White DW, Tischler AD, Carpenter AE, Hung DT. 2017. Systematic, multiparametric analysis of *Mycobacterium tuberculosis* intracellular infection offers insight into coordinated virulence. *PLoS Pathog* 13:e1006363. <https://doi.org/10.1371/journal.ppat.1006363>.
 15. Lerner TR, Borel S, Greenwood DJ, Repnik U, Russell MR, Herbst S, Jones ML, Collinson LM, Griffiths G, Gutierrez MG. 2017. *Mycobacterium tuberculosis* replicates within necrotic human macrophages. *J Cell Biol* 216:583–594. <https://doi.org/10.1083/jcb.201603040>.
 16. Lerner TR, Queval CJ, Fearnas A, Repnik U, Griffiths G, Gutierrez MG. 2018. Phthiocerol dimycocerosates promote access to the cytosol and intracellular burden of *Mycobacterium tuberculosis* in lymphatic endothelial cells. *BMC Biol* 16:1. <https://doi.org/10.1186/s12915-017-0471-6>.
 17. Quigley J, Hughitt VK, Velikovskiy CA, Mariuzza RA, El-Sayed NM, Briken V. 2017. The cell wall lipid PDIM contributes to phagosomal escape and host cell exit of *Mycobacterium tuberculosis*. *mBio* 8:e00148-17. <https://doi.org/10.1128/mBio.00148-17>.
 18. Bernard EM, Fearnas A, Bussi C, Santucci P, Peddie CJ, Lai RJ, Collinson LM, Gutierrez MG. 2020. *M. tuberculosis* infection of human iPSC-derived macrophages reveals complex membrane dynamics during xenophagy evasion. *J Cell Sci* 134:jcs252973. <https://doi.org/10.1242/jcs.252973>.
 19. van der Wel N, Hava D, Houben D, Fluitsma D, van Zon M, Pierson J, Brenner M, Peters PJ. 2007. *M. tuberculosis* and *M. leprae* translocate from the phagolysosome to the cytosol in myeloid cells. *Cell* 129:1287–1298. <https://doi.org/10.1016/j.cell.2007.05.059>.
 20. Rohde K, Yates RM, Purdy GE, Russell DG. 2007. *Mycobacterium tuberculosis* and the environment within the phagosome. *Immunol Rev* 219:37–54. <https://doi.org/10.1111/j.1600-065X.2007.00547.x>.
 21. Huang L, Nazarova EV, Russell DG. 2019. *Mycobacterium tuberculosis*: bacterial fitness within the host macrophage. *Microbiol Spectr* 7(2):10.1128/microbiolspec.BAI-0001-2019. <https://doi.org/10.1128/microbiolspec.BAI-0001-2019>.
 22. Liu Y, Tan S, Huang L, Abramovitch RB, Rohde KH, Zimmerman MD, Chen C, Dartois V, VanderVen BC, Russell DG. 2016. Immune activation of the host cell induces drug tolerance in *Mycobacterium tuberculosis* both in vitro and in vivo. *J Exp Med* 213:809–825. <https://doi.org/10.1084/jem.20151248>.
 23. Santucci P, Greenwood DJ, Fearnas A, Chen K, Jiang H, Gutierrez MG. 2021. Intracellular localisation of *Mycobacterium tuberculosis* affects efficacy of the antibiotic pyrazinamide. *Nat Commun* 12:3816. <https://doi.org/10.1038/s41467-021-24127-3>.
 24. Malone L, Schurr A, Lindh H, McKenzie D, Kiser JS, Williams JH. 1952. The effect of pyrazinamide (aldinamide) on experimental tuberculosis in mice. *Am Rev Tuberc* 65:511–518.
 25. McDermott W, Tompsett R. 1954. Activation of pyrazinamide and nicotinamide in acidic environments in vitro. *Am Rev Tuberc* 70:748–754.
 26. Solotorovsky M, Gregory FJ, Ironson EJ, Bugie EJ, O'Neill RC, Pfister R, III. 1952. Pyrazinoic acid amide; an agent active against experimental murine tuberculosis. *Proc Soc Exp Biol Med* 79:563–565. <https://doi.org/10.3181/00379727-79-19447>.
 27. Tarshis MS, Weed WA, Jr. 1953. Lack of significant in vitro sensitivity of *Mycobacterium tuberculosis* to pyrazinamide on three different solid media. *Am Rev Tuberc* 67:391–395.
 28. Zhang Y, Permar S, Sun Z. 2002. Conditions that may affect the results of susceptibility testing of *Mycobacterium tuberculosis* to pyrazinamide. *J Med Microbiol* 51:42–49. <https://doi.org/10.1099/0022-1317-51-1-42>.
 29. Zhang Y, Scorpio A, Nikaido H, Sun Z. 1999. Role of acid pH and deficient efflux of pyrazinoic acid in unique susceptibility of *Mycobacterium tuberculosis* to pyrazinamide. *J Bacteriol* 181:2044–2049. <https://doi.org/10.1128/JB.181.7.2044-2049.1999>.
 30. Zhang Y, Shi W, Zhang W, Mitchison D. 2013. Mechanisms of pyrazinamide action and resistance. *Microbiol Spectr* 2(4):1–12. <https://doi.org/10.1128/microbiolspec.MGM2-0023-2013>.
 31. Darby CM, Ingólfsson HI, Jiang X, Shen C, Sun M, Zhao N, Burns K, Liu G, Eht S, Warren JD, Andersen OS, Brickner SJ, Nathan C. 2013. Whole cell screen for inhibitors of pH homeostasis in *Mycobacterium tuberculosis*. *PLoS One* 8:e68942. <https://doi.org/10.1371/journal.pone.0068942>.
 32. Fontes FL, Peters BJ, Crans DC, Crick DC. 2020. The acid-base equilibrium of pyrazinoic acid drives the pH dependence of pyrazinamide-induced *Mycobacterium tuberculosis* growth inhibition. *ACS Infect Dis* 6:3004–3014. <https://doi.org/10.1021/acinfecdis.0c00507>.
 33. Zhang Y, Wade MM, Scorpio A, Zhang H, Sun Z. 2003. Mode of action of pyrazinamide: disruption of *Mycobacterium tuberculosis* membrane transport and energetics by pyrazinoic acid. *J Antimicrob Chemother* 52:790–795. <https://doi.org/10.1093/jac/dkg446>.
 34. den Hertog AL, Menting S, Peltz R, Warns M, Siddiqi SH, Anthony RM. 2016. Pyrazinamide is active against *Mycobacterium tuberculosis* cultures at neutral pH and low temperature. *Antimicrob Agents Chemother* 60:4956–4960. <https://doi.org/10.1128/AAC.00654-16>.
 35. Peterson ND, Rosen BC, Dillon NA, Baughn AD. 2015. Uncoupling environmental pH and intrabacterial acidification from pyrazinamide susceptibility in *Mycobacterium tuberculosis*. *Antimicrob Agents Chemother* 59:7320–7326. <https://doi.org/10.1128/AAC.00967-15>.
 36. Gopal P, Gruber G, Dartois V, Dick T. 2019. Pharmacological and molecular mechanisms behind the sterilizing activity of pyrazinamide. *Trends Pharmacol Sci* 40:930–940. <https://doi.org/10.1016/j.tips.2019.10.005>.
 37. Lamont EA, Dillon NA, Baughn AD. 2020. The bewildering antitubercular action of pyrazinamide. *Microbiol Mol Biol Rev* 84:e00070-19. <https://doi.org/10.1128/MMBR.00070-19>.
 38. Gopal P, Sarathy JP, Yee M, Ragunathan P, Shin J, Bhushan S, Zhu J, Akopian T, Kandror O, Lim TK, Gengenbacher M, Lin Q, Rubin EJ, Gruber G, Dick T. 2020. Pyrazinamide triggers degradation of its target aspartate decarboxylase. *Nat Commun* 11:1661. <https://doi.org/10.1038/s41467-020-15516-1>.
 39. Gopal P, Yee M, Sarathy J, Low JL, Sarathy JP, Kaya F, Dartois V, Gengenbacher M, Dick T. 2016. Pyrazinamide resistance is caused by two distinct mechanisms: prevention of coenzyme A depletion and loss of virulence factor synthesis. *ACS Infect Dis* 2:616–626. <https://doi.org/10.1021/acinfecdis.6b00070>.
 40. Sun Q, Li X, Perez LM, Shi W, Zhang Y, Sacchetti JC. 2020. The molecular basis of pyrazinamide activity on *Mycobacterium tuberculosis* PanD. *Nat Commun* 11:339. <https://doi.org/10.1038/s41467-019-14238-3>.
 41. Shi W, Chen J, Feng J, Cui P, Zhang S, Weng X, Zhang W, Zhang Y. 2014. Aspartate decarboxylase (PanD) as a new target of pyrazinamide in *Mycobacterium tuberculosis*. *Emerg Microbes Infect* 3:e58. <https://doi.org/10.1038/emi.2014.61>.
 42. Schnettger L, Rodgers A, Repnik U, Lai RP, Pei G, Verdoes M, Wilkinson RJ, Young DB, Gutierrez MG. 2017. A Rab20-dependent membrane trafficking pathway controls *M. tuberculosis* replication by regulating phagosome spaciousness and integrity. *Cell Host Microbe* 21:619–628.e5. <https://doi.org/10.1016/j.chom.2017.04.004>.
 43. Huss M, Ingenhorst G, König S, Gassel M, Drose S, Zeeck A, Altendorf K, Wiczorek H. 2002. Concanamycin A, the specific inhibitor of V-ATPases, binds to the V(o) subunit c. *J Biol Chem* 277:40544–40548. <https://doi.org/10.1074/jbc.M207345200>.
 44. Giraud-Gatineau A, Coya JM, Maure A, Biton A, Thomson M, Bernard EM, Marrec J, Gutierrez MG, Larouy-Maumus G, Brosch R, Gicquel B, Tailleux L. 2020. The antibiotic bedaquiline activates host macrophage innate immune resistance to bacterial infection. *Elife* 9:e55692. <https://doi.org/10.7554/eLife.55692>.
 45. Hards K, McMillan DGG, Schurig-Briccio LA, Gennis RB, Lill H, Bald D, Cook GM. 2018. Ionophoric effects of the antitubercular drug bedaquiline. *Proc Natl Acad Sci U S A* 115:7326–7331. <https://doi.org/10.1073/pnas.1803723115>.
 46. Sarathy JP, Ragunathan P, Cooper CB, Upton AM, Gruber G, Dick T. 2020. TBAJ-876 displays bedaquiline-like mycobactericidal potency without retaining the parental drug's uncoupler activity. *Antimicrob Agents Chemother* 64:e01540-19. <https://doi.org/10.1128/AAC.01540-19>.
 47. Sarathy JP, Gruber G, Dick T. 2019. Re-understanding the mechanisms of action of the anti-mycobacterial drug bedaquiline. *Antibiotics (Basel)* 8:261. <https://doi.org/10.3390/antibiotics8040261>.
 48. Queval CJ, Fearnas A, Botella L, Smyth A, Schnettger L, Mitermite M, Wooff E, Villarreal-Ramos B, Garcia-Jimenez W, Heunis T, Trost M, Werling D, Salguero FJ, Gordon SV, Gutierrez MG. 2021. Macrophage-specific responses to human- and animal-adapted tubercle bacilli reveal pathogen and host factors driving multinucleated cell formation. *PLoS Pathog* 17:e1009410. <https://doi.org/10.1371/journal.ppat.1009410>.
 49. Petrella S, Gelus-Ziental N, Maudry A, Laurans C, Boudjelloul R, Sougakoff W. 2011. Crystal structure of the pyrazinamidase of *Mycobacterium tuberculosis*: insights into natural and acquired resistance to pyrazinamide. *PLoS One* 6:e15785. <https://doi.org/10.1371/journal.pone.0015785>.
 50. Scorpio A, Zhang Y. 1996. Mutations in *pncA*, a gene encoding pyrazinamidase/nicotinamidase, cause resistance to the antituberculous drug pyrazinamide in tubercle bacillus. *Nat Med* 2:662–667. <https://doi.org/10.1038/nm0696-662>.

51. Goode O, Smith A, Zarkan A, Cama J, Invergo BM, Belgami D, Cano-Muniz S, Metz J, O'Neill P, Jeffries A, Norville IH, David J, Summers D, Pagliara S. 2021. Persister *Escherichia coli* cells have a lower intracellular pH than susceptible cells but maintain their pH in response to antibiotic treatment. *mBio* 12:e00909-21. <https://doi.org/10.1128/mBio.00909-21>.
52. Krulwich TA, Sachs G, Padan E. 2011. Molecular aspects of bacterial pH sensing and homeostasis. *Nat Rev Microbiol* 9:330–343. <https://doi.org/10.1038/nrmicro2549>.
53. Vandal OH, Nathan CF, Ehrh S. 2009. Acid resistance in *Mycobacterium tuberculosis*. *J Bacteriol* 191:4714–4721. <https://doi.org/10.1128/JB.00305-09>.
54. Greenwood DJ, Dos Santos MS, Huang S, Russell MRG, Collinson LM, MacRae JI, West A, Jiang H, Gutierrez MG. 2019. Subcellular antibiotic visualization reveals a dynamic drug reservoir in infected macrophages. *Science* 364:1279–1282. <https://doi.org/10.1126/science.aat9689>.
55. Bartek IL, Reichlen MJ, Honaker RW, Leistikow RL, Clambey ET, Scobey MS, Hinds AB, Born SE, Covey CR, Schurr MJ, Lenaerts AJ, Voskuil MI. 2016. Antibiotic bactericidal activity is countered by maintaining pH homeostasis in *Mycobacterium smegmatis*. *mSphere* 1:e00176-16. <https://doi.org/10.1128/mSphere.00176-16>.
56. Richter MF, Drown BS, Riley AP, Garcia A, Shirai T, Svec RL, Hergenrother PJ. 2017. Predictive compound accumulation rules yield a broad-spectrum anti-biotic. *Nature* 545:299–304. <https://doi.org/10.1038/nature22308>.
57. Early J, Ollinger J, Darby C, Alling T, Mullen S, Casey A, Gold B, Ochoada J, Wiernicki T, Masquelin T, Nathan C, Hipskind PA, Parish T. 2019. Identification of compounds with pH-dependent bactericidal activity against *Mycobacterium tuberculosis*. *ACS Infect Dis* 5:272–280. <https://doi.org/10.1021/acscinfed.8b00256>.
58. Thiede JM, Dillon NA, Howe MD, Aflakpui R, Modlin SJ, Hoffner SE, Valafar F, Minato Y, Baughn AD. 2022. Pyrazinamide susceptibility is driven by activation of the SigE-dependent cell envelope stress response in *Mycobacterium tuberculosis*. *mBio* 13:e00439-21. <https://doi.org/10.1128/mbio.00439-21>.
59. van Wilgenburg B, Browne C, Vowles J, Cowley SA. 2013. Efficient, long term production of monocyte-derived macrophages from human pluripotent stem cells under partly-defined and fully-defined conditions. *PLoS One* 8:e71098. <https://doi.org/10.1371/journal.pone.0071098>.
60. Schnettger L, Gutierrez MG. 2017. Quantitative spatiotemporal analysis of phagosome maturation in live cells. *Methods Mol Biol* 1519:169–184. https://doi.org/10.1007/978-1-4939-6581-6_11.