



HAL
open science

A simple and reliable method for separation of mineral oil/polychlorobiphenyl mixtures

Chems Eddine Gherdaoui, Zohra Boubarka, Jean-Philippe Delbarre, Olivier Hutin, Roger Sansano, Laurent Leclercq, Philippe Supiot, Ulrich Maschke

► **To cite this version:**

Chems Eddine Gherdaoui, Zohra Boubarka, Jean-Philippe Delbarre, Olivier Hutin, Roger Sansano, et al.. A simple and reliable method for separation of mineral oil/polychlorobiphenyl mixtures. Waste Management and Research, 2022, pp.0734242X2211054. 10.1177/0734242X221105436 . hal-03835812

HAL Id: hal-03835812

<https://hal.science/hal-03835812v1>

Submitted on 1 Nov 2022

HAL is a multi-disciplinary open access archive for the deposit and dissemination of scientific research documents, whether they are published or not. The documents may come from teaching and research institutions in France or abroad, or from public or private research centers.

L'archive ouverte pluridisciplinaire **HAL**, est destinée au dépôt et à la diffusion de documents scientifiques de niveau recherche, publiés ou non, émanant des établissements d'enseignement et de recherche français ou étrangers, des laboratoires publics ou privés.



Distributed under a Creative Commons Attribution - NonCommercial 4.0 International License

**A SIMPLE AND RELIABLE METHOD FOR SEPARATION OF MINERAL OIL /
POLYCHLOROBIPHENYL MIXTURES**

Chems Eddine Gherdaoui^{1,2}, Zohra Boubarka^{1,3}, Jean-Philippe Delbarre², Olivier Hutin²,
Roger Sansano², Laurent Leclercq⁴, Philippe Supiot¹,
and Ulrich Maschke*¹

¹ Unité Matériaux et Transformations, Université de Lille, Villeneuve d'Ascq, France

² Maxei Group, Arras, France

³ Laboratoire Physico-Chimie des Matériaux-Catalyse et Environnement, Université des
Sciences et de la Technologie d'Oran Mohamed Boudiaf, Oran, Algeria

⁴ IBMM, University of Montpellier, CNRS, ENSCM, France

Corresponding author:

Ulrich Maschke, Unité Matériaux et Transformations (UMET), UMR CNRS N°8207,
Bâtiment C6, Université de Lille, 59655 Villeneuve d'Ascq Cedex, France.

Email : ulrich.maschke@univ-lille.fr

Abstract

Polychlorinated biphenyls (PCBs) were broadly applied world-wide as electrical insulators in transformers and power capacitors, due to their high dielectric constant and non-flammability. They were often added to mineral oils used as dielectric fluids, which are nowadays classified as hazardous waste. Indeed, the Stockholm Convention aims to eliminate the use of equipment with PCB content greater than 0.005 weight-% (= 50 ppm) by 2025. Accurate identification and quantification of small traces of PCBs contained in mineral oil thus represent a great analytical challenge. In order to achieve this goal, a simple, cost-effective and fast chromatographic process was developed to separate PCBs from mineral oil, allowing to obtain reliable data to determine the concentration of PCBs, down to 2-3 ppm. Experimental and analytical methods such as thin layer chromatography, column chromatography as well as gas chromatography coupled with mass spectroscopy (GC-MS) were applied to acquire a high-level of qualitative and quantitative determination of PCBs in transformer mineral oils.

Keywords: Polychlorinated biphenyls (PCBs); mineral oil; chromatographic separation; gas chromatography; mass spectroscopy.

Introduction

Polychlorinated biphenyls (PCBs) are synthetic aromatic compounds known by the trade names Pyralene, Aroclor and others (Ericson & Kaley, 2011). They refer to a family of 209 organochlorinated compounds consisting of two benzene rings substituted with 1 to 10 chlorine atoms in different positions (Ballschmiter & Zell, 1980). Their chemical and physical stability and non-flammability have allowed these compounds to be used mainly as electrical insulators in power transformers and capacitors, but also in some heaters and other electrical equipments (Ericson & Kaley, 2011; Rossberg et al., 2006).

PCB molecules have been revealed to be toxic, as they promote carcinogenic effects (Knerr & Schrenk, 2006). They have thus been classified as persistent organic pollutants (POPs) according to the Stockholm Convention (Stockholm Convention; Weber et al., 2011). Therefore, all transformer fluids containing PCBs are considered hazardous waste and therefore must be monitored (Xu et al., 2013; PCB-elimination-network). In fact, it is prohibited to hold devices containing PCBs above 50 ppm in the European Union (Council Directive 96/59/EC) pending their disposal by 2025 (Directive 2012/19/Eu; Regulation (Eu) 2019/1021).

Since the phaseout of PCBs, mineral oil (MO) has been used as an alternative in power transformers, especially because of its electromagnetic insulating power equivalent to that of PCBs (Rouse, 1998), its wide distribution and its low cost compared to other fluids available in the market such as silicone and synthetic or vegetable ester oils (Borsi & Gockenbach, 2005). However, transformer oils often contain variable amounts of PCBs (Pelitli et al., 2015).

Generally, PCB molecules are analyzed using equipment with a capillary column usually filled with fused silica, this technique known as gas chromatography (GC) is often coupled with an electron capture detector (ECD) (Bunert et al., 2019; Barcauskait, 2019). Other

detectors can be coupled to GC to detect PCBs, including the flame ionization detector (FID) which is sensitive to the detection of Volatile Organic Compounds (VOCs) (Huang et al., 2021), the flame photometry (FP) detector mainly used for compounds containing sulfur or phosphorus compounds (Clark & Thurbide, 2015), the thermoionic detector, also called nitrogen-phosphorus detector (NPD) used for nitrogen or phosphorus compounds (Wang et al., 2016), the photoionization detector (PID) adapted to the detection of ionizable compounds (Liaud et al., 2014), or the coupling with mass spectrometry (MS) which is sensitive for the detection of POPs (Ballschmiter et al., 1992; Li et al., 2021). However, despite their high sensitivity, GC detectors show a reduced efficiency of detection of PCBs in the presence of mineral oils of molar masses of around $1000 \text{ kg kmol}^{-1}$. At present, the ECD detector remains the most used reference for the analysis of halogenated compounds (De Kok et al., 1982). This detector captures some electrons from the sample, which reduces the measured current. The compensation for this reduction is recorded as a positive peak. As it is often the case for other GC techniques, a carrier gas should contain few oxygen and water impurities that can interact with the stationary phase and cause considerable problems such as high reference noise or column bleed in the output gas chromatogram, which reduces analyzer sensitivity and column life. Impurities can also oxidize the radioactive nickel source of ECD detectors and therefore decrease their reactivity and lifetime, making it a major drawback of this conventional analytical technique (Poole, 2013; Bunert et al., 2017), justifying the broader use of mass spectrometry for the detection of PCB. Nevertheless, other analytical difficulties can be encountered such as the detection and quantification of PCBs in the presence of mineral oils with molar masses exceeding $1000 \text{ kg kmol}^{-1}$. Indeed, the detection of PCBs in such media is considered to be the most difficult, especially for low chlorinated PCBs which have physical and chemical characteristics very similar to those of MO from electrical transformers (Takada et al., 2001). Moreover, in order to analyze all PCBs and to avoid interference

problems between PCBs and MO matrix derivatives, as well as to prevent pollution of detector ionization sources, it is necessary to combine a pretreatment technique capable of extracting PCBs from mineral oils before their injection into the GC-MS.

At present, the best-known pretreatment procedure is solid phase extraction (SPE) (Dmitrovic et al., 2002) combined with liquid-liquid extraction. This method requires the addition of DMSO for SPE, water to immobilize the PCB mixture, hexane for liquid-liquid extraction which must be later dried by sodium sulfate (Takada et al., 2001; Wittsiepe et al., 2014; Crucello et al., 2020). This method is expensive and requires the use of many solvents.

This work aims at describing a simple, reliable, and inexpensive chromatographic analytical separation method to extract PCBs from transformer MO, to reduce the analysis time and to increase the sensitivity of detection and quantification of high and low chlorinated PCBs, without using many additional chemicals.

For this purpose, combined separation and chromatographic characterizations were first performed on model MO/PCB systems in the presence of 18 PCB molecules including the 7 most common ones called indicator PCBs (Afful et al., 2013), and then applied to an industrial sample of mineral oil contaminated with unknown PCBs provided by Maxei company. The chromatographic separation protocol was approved by thin layer chromatography, column chromatography filled with silica gel material under liquid petroleum ether flow and nitrogen flow in order to accelerate the separation of MO/PCB systems.

The resulting fractions, free of mineral oil molecules, can then be injected and analyzed by GC-EI/MS gas chromatography. This analytical and pretreatment combination improves the detection sensitivity of MO/PCB systems without any pollution concern for the detector ionization source.

Materials and methods

Chemical products

Transformer mineral oil

The transformer MO samples studied were supplied by a french company (Arras Maxei), and were mainly composed of 3 families of hydrocarbons: paraffins, naphthenes, and non-chlorinated aromatics. A PCB-free virgin MO named *MO virgin* and a PCB-contaminated MO denominated *MO contaminated* were considered here. The latter has been used for long-time in an industrial environment and contains *MO virgin* as MO as well as an unknown number and quantity of PCBs.

Polychlorinated biphenyls

The following PCB molecules were selected for this work (Figure 1) : Biphenyl (PCB N°0), 2-Chlorobiphenyl (PCB N°1), 3-Chlorobiphenyl (PCB N°2), 2,2'-Dichlorobiphenyl (PCB N°4), 2,3-Dichlorobiphenyl (PCB N°5), 2,4-Dichlorobiphenyl (PCB N°7), 3,4-Dichlorobiphenyl (PCB N°12), 3,5-Dichlorobiphenyl (PCB N°14), 4,4'-Dichlorobiphenyl (PCB N°15), 2,4,4'-Trichlorobiphenyl (PCB N°28), 2,4',5'-Trichlorobiphenyl (PCB N°31), 2,2',5,5'-Tetrachlorobiphenyl (PCB N°52), 3,3',4,4'-Tetrachlorobiphenyl (PCB N°77), 2,2',4,5,5'-Pentachlorobiphenyl (PCB N°101), 2,2',3,4,4',5'-Hexachlorobiphenyl (PCB N°138), 2,2',4,4',5,5'-Hexachlorobiphenyl (PCB N°153), 2,3,3',4,4',5'-Hexachlorobiphenyl (PCB N°156), 2,2',3,4,4',5,5'-Heptachlorobiphenyl (PCB N°180), and Decachlorobiphenyl (PCB N°209), which were provided by Sigma-Aldrich (St. Quentin Fallavier, France). The choice of PCBs was mainly focused on the so-called indicator PCBs accounting for nearly 80% of all PCBs: most often PCBs No. 118, 138, 153 and 180, but also PCBs No. 28, 52 and 101. In 2017, these 7 indicator PCBs among the 209 congeners were selected by the Community Reference Office of the European Commission in Brussels as being the

compounds to be searched for in priority in the analysis of organic matrices (sediment, blood, flesh, fat) due to their persistence and abundance in the environment as well as their toxicological properties (Turrio-Baldassarri et al., 1993). Other congeners of the same family with the same chlorine numbers have been added in this study in order to obtain more information on the chromatographic separation parameters.

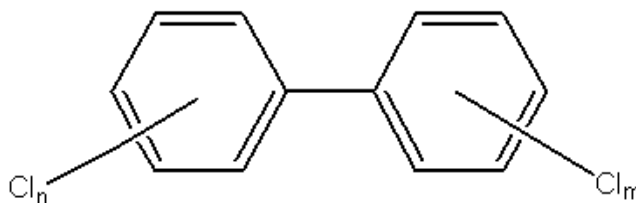


Figure 1. Generalized chemical structure of polychlorinated biphenyls (PCBs). The case $n=m=0$ corresponds to the chlorine-free PCB N°0 (Biphenyl).

Organic solvents

Petroleum Ether (40-60) and Acetone were purchased from Aldrich (p.a. grade solvents). These reagents were used as received.

Determination of the molar mass of transformer mineral oil (MO)

The molar mass of MO was determined by a MALDI-TOF/MS (Matrix Assisted laser Desorption Ionisation-Time of Flight/mass spectroscopy) using a nitrogen laser beam of wavelength 337 nm and pulse time 3 ns. MO was diluted to 1/100 in methanol and analyzed with a DHB matrix (2.5 Dihydroxybenzoic acid). The result obtained was recorded over an interval from 99 to 1500 Da. The determination of the molar mass of MO was repeated three times.

Separation techniques

Thin Layer Chromatography

Thin Layer Chromatography (TLC) analysis of MO and MO/PCB mixtures was carried out on aluminum supports (20 cm x 20 cm) covered with uniform layers of silica gel as stationary phase. The thickness of this layer was about 0.2 mm (200 μm). The TLC plates were placed in a rectangular tank containing the eluent which was a solvent mixture composed of 99 vol-% Petroleum Ether 40-60/1 vol-% Acetone) (Nikolaev et al., 2019; Ciura et al., 2017). The stains from the fractions deposited at 1 cm from the base of the layer migrate on the TLC plate more or less quickly according to interactions between the mobile phase (eluent and MO/PCB) and the stationary phase. The visualization of the different spots on the TLC plates was performed under a UV lamp with a wavelength of 254 nm. The plate appears fluorescent green and the products that absorb UV radiation appear as dark spots. The obtained TLC result of a given compound was expressed by calculating the “ratios to the front” value, R_f , corresponding to the ratio of the distance traveled by the compound to that of the solvent front. Each TLC analysis was repeated six times.

Silica column chromatography

Silica column chromatography (SCC) was carried out on a standard silica column (Silica 60 M, 0.04 - 0.063 mm, provided by Macherey-Nagel GmbH & Co. KG, Düren, Germany) (length : 33 cm, diameter : 3 cm), applying the solvent mixture used by TLC analysis (99 vol-% Petroleum Ether 60-40 / 1 vol-% Acetone) as mobile phase. The obtained separation effects were controlled by TLC analysis. Indeed, the constituents of the MO/PCB mixtures migrated at different speeds on the support and were thus separated. Migration of MO/PCB mixtures on the silica column was done under a controlled compressed nitrogen flow, in order to accelerate separation. Each chromatographic column run was repeated six times.

Gas chromatography coupled with mass spectroscopy

The recovered separated fractions containing PCB compounds were analyzed by GC-MS after drying in a vacuum oven at 70°C. The GC chromatograms and their associated MS spectra were obtained using a GC/MS apparatus (Clarus 680/Clarus 600T from Perkin Elmer, United States), equipped with a fused silica capillary column, which was maintained at 70°C (Elite-5 (5% Diphenyl) Dimethylpolysiloxane, 30 m × 0.53 mm (internal diameter ID), film thickness $d_f = 0.5 \mu\text{m}$). The MS appliance was equipped with an EI (electronic ionization) ionization source and a quadrupole filter (ion separator) at DC (U) and AC (V) voltages set by the equipment (Chamkasem et al., 2016).

Operating conditions of the GC-MS apparatus

The thermal conditions of the GC oven were as follows: The column has been maintained at a temperature of 70°C initially for 4 min then a ramp of 20°C min⁻¹ up to 120°C was applied. The temperature has then been raised to 250°C at a rate of 30°C min⁻¹. The oven remained at this temperature for 20 min, and then the temperature was increased at a rate of 20°C min⁻¹ up to 300°C. The latter temperature was maintained for another 20 min. The temperatures of the injector and the transfer line were 300°C. The carrier gas used in our analysis was Helium. The characteristic quantities of the chromatographic analysis (t_R (min): retention time, t'_R (min): reduced retention time, k' : capacity factor, α : selectivity factor, N : number of theoretical plates, R_s : column resolution) were measured following the method described in reference (Jennings, 2000). The reduced retention time t'_R is given by equation (1):

$$t'_R = t_R - t_M \quad (1)$$

where t_M is the time required for a species that is not retained by the stationary phase to pass through the column. The capacity factor k' is given by equation (2),

$$k' = \frac{t'_R}{t_M} \quad (2)$$

describing the rate of progression of PCBs in the column. This is the ratio of the quantities of a PCB analyte present at equilibrium in the 2 adjacent stationary and mobile phase volumes.

The selectivity factor α is given by equation (3),

$$\alpha = \frac{t'_R(B)}{t'_R(A)} = \frac{k'_A}{k'_B} \quad (3)$$

and represents the ability of the chromatographic system to 'distinguish' chemically between sample components. It is usually measured as a ratio of the retention (capacity) factors (k') of the two peaks and can be visualized as the distance between their apices. The number of theoretical trays N is given by equation (4) :

$$N = 16 \left(\frac{t_R}{\omega} \right)^2 \quad (4)$$

The efficiency of the column increases when N increases. Note that $\omega = 4 \sigma$ (the width at the base of the peak). The resolution of a column (R_S) is given by equation (5), and gives a

$$R_S = 2 \frac{t_R(B) - t_R(A)}{\omega_B - \omega_A} \quad (5)$$

quantitative measure of its ability to separate two PCBs analytes A and B.

The detection and identification of PCB molecules was performed with the help of a reference standard which was FC-43 (Heptacosane). The masses obtained by MS were limited in the range between 30 m z^{-1} and 620 m z^{-1} due to the type of electron ionization source which is not able to fragment molecules with masses higher than 620 m z^{-1} . The ionization source temperature has been set at 280°C , and the voltage applied to the filament was 430 V .

Quantification of PCBs by GC-MS

Calibration curves were established allowing independent quantitative determination of individual PCB concentrations. For this purpose, each indicator PCB was analyzed as reference standard by GC-MS using a variety of concentrations ranging from 10 ppm to 200 ppm, and signal area (SA) calculations were performed. The accuracy of this analytical

method was verified by graphical representation applying the following linear function: $\text{Area-PCB} = P * C$, where Area-PCB represents the peak area of a given PCB molecule as function of its concentration C, and P stands for the slope of this linear relationship. The R^2 coefficients of determination were obtained by linear regression analysis using Origin version 8 software (Figure S1). Limits of detection (*LOD*) and of quantitation (*LOQ*) were calculated from each calibration curve, according to international regulatory agencies. *LOD* was obtained by 3.3 times the ratio of the standard deviation of their response (s) and the slope of the calibration curve (S), $LOD = 3.3 * (SD \text{ of intercept } \times \text{slope}^{-1})$. *LOQ* was obtained from $LOQ = 10 * (SD \text{ of intercept } \times \text{slope}^{-1})$. The precision was obtained considering the relative standard deviation (*RSD*) for both samples and standard solutions. The accuracy was assessed using certified samples.

Results and discussions

Molar mass of transformer mineral oil

The Maldi-TOF spectrum of virgin MO, shown in Figure 2, clearly proves that the molar mass of this oil exceeds $1000 \text{ kg kmol}^{-1}$, which does not allow its direct injection and analysis into GC instruments coupled with a mass spectrometer or other detectors. Indeed, the spectrum shows fragments with masses of 600, 800, 1200 m z^{-1} , thus confirming the need to separate PCBs from MO before carrying out the GC analysis.

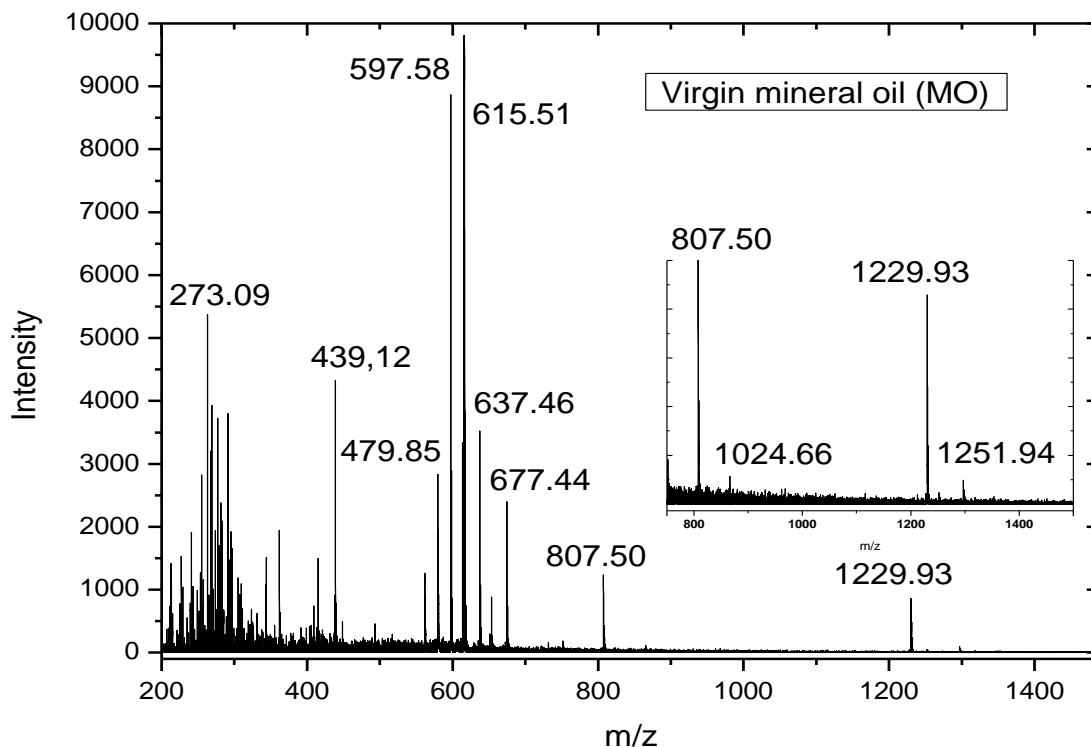


Figure 2. MALDI-TOF spectrum of virgin MO.

Approval of the chromatographic protocol

The protocol for chromatographic separation of MO/PCB mixtures is gathered in Figure 3. The different steps of the separation process can be described as follows: first of all, an initial qualitative evaluation via TLC of model systems composed of *MO virgin* in the absence and presence of one or more PCB molecules made it possible to separate qualitatively PCB and MO components. In order to implement quantitative and more sophisticated methods, a separation of *MO virgin* / PCB mixtures by SCC was necessary. After obtaining MO and PCB fractions separately, a primary vacuum distillation at 70°C was carried out. In this step, the organic solvents (petroleum ether and acetone) were vaporized and then recycled by condensation.

During the different steps of chromatographic separation, TLC analysis was systematically applied. It should be mentioned that the concentration effect of the deposited stains could hide

the appearance of other fractions. Once distilled, the fractions were dried in a vacuum oven at 70°C to remove traces of solvent. The penultimate step consists in elaborating the mass balance. The mass of *MO virgin* / PCB introduced into the column and then separated must correspond to the sum of the masses of the MO / PCB fractions ($\sum m \text{ MO/PCB} \approx \sum \text{mass of the MO/PCB fractions}$). This mass balance allowed to approve this protocol. The last step represents the most important one; it consists in studying the fractions containing PCBs by GC-MS analysis.

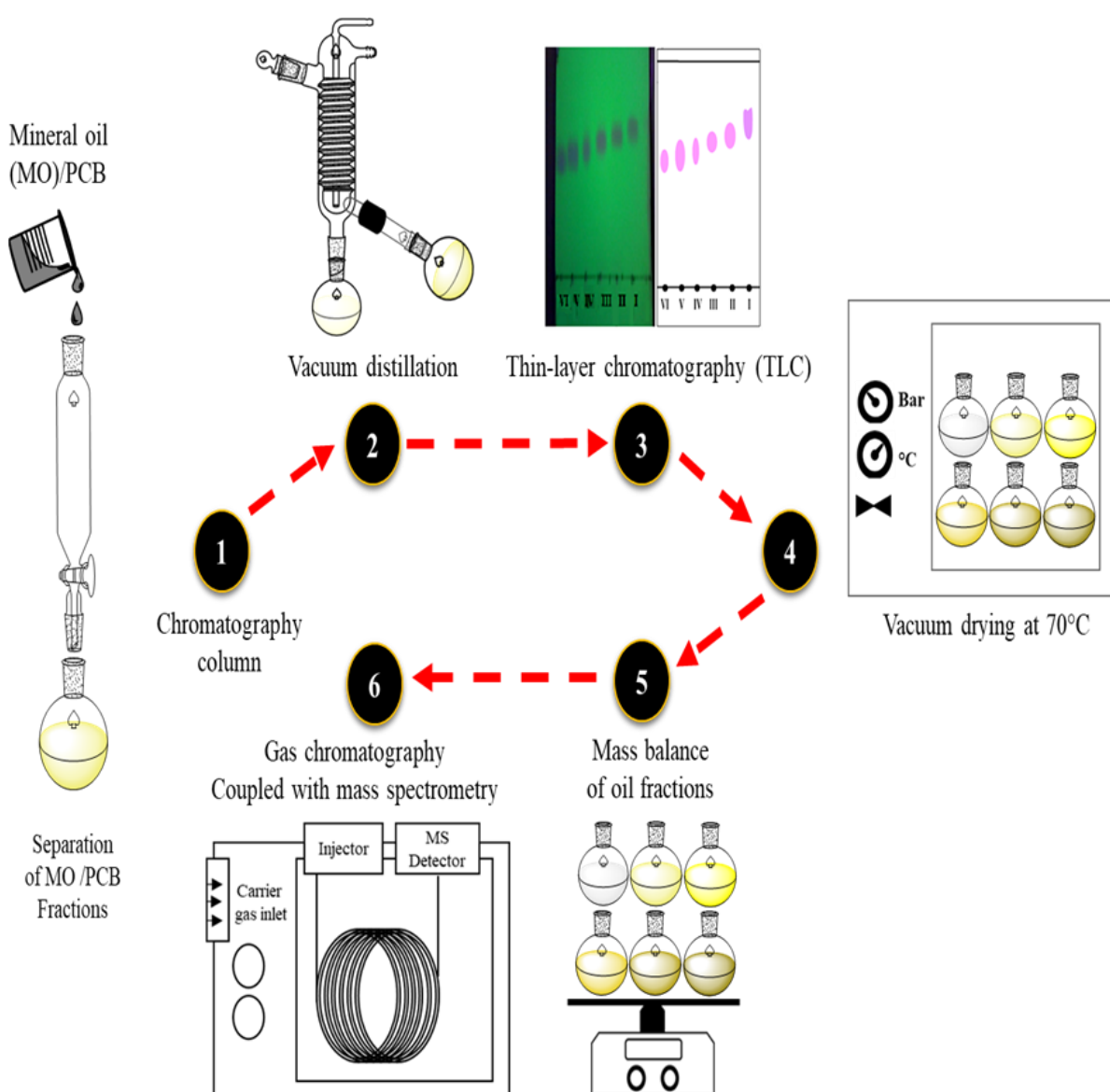


Figure 3. Chromatographic separation process of MO / PCB mixtures.

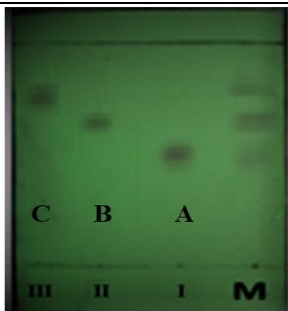
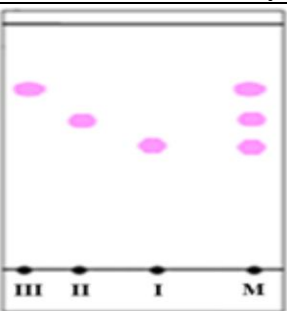
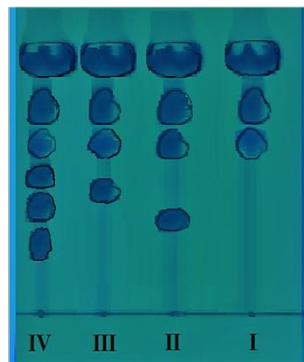
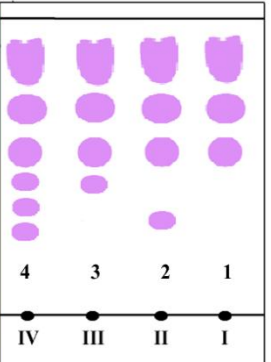
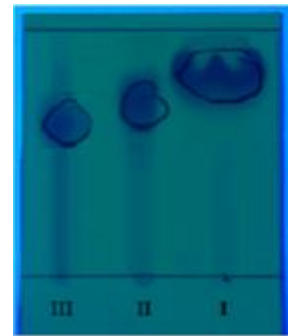
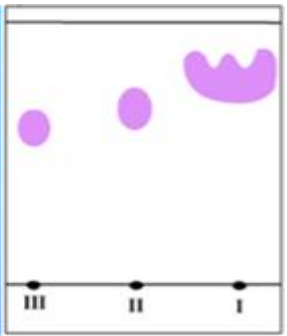
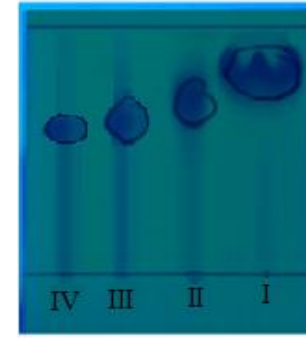
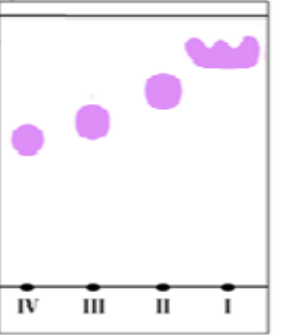
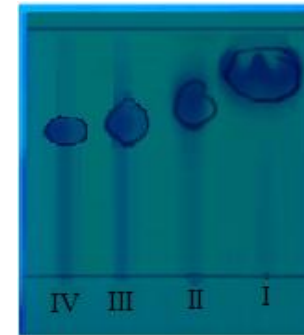
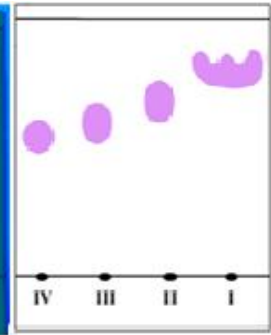
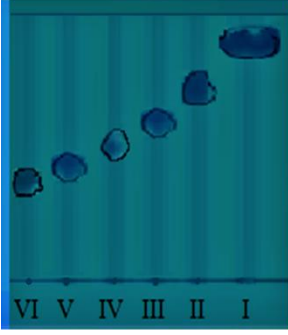
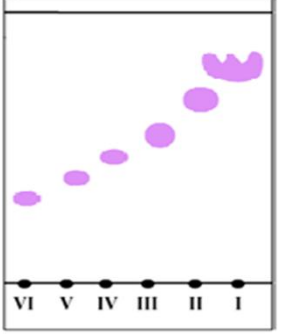
Thin Layer and Silica Column chromatography of MO/PCB mixtures

In order to check for the feasibility of the separation protocol for MO / PCB mixtures, TLC analysis was performed on three pure PCBs, PCB N°0 (non-chlorinated biphenyl), PCB N°15, which has 2 chlorines in para position, and PCB N°209, the most chlorinated congener (10 chlorines) of the PCB family. It can be seen that the stain of PCB N°0, i.e. in the absence of chlorines, migrates less quickly than the stains of PCB N°15 and PCB N°209. It can be deduced that the migration of PCBs on the thin silica layer is not related to the molecular weight of the PCB species, but rather to the polarity of the solvent and the interactions of the chlorines with the stationary phase. The chosen mobile phase (petroleum ether - acetone solvent mixture) is apolar: increasing the polarity of the PCB compound due to further chlorination leads to an increase of the migration rate. The results of the calculation of R_f values of PCBs N°0, N°15 and N°209 were found as 0.55, 0.65 and 0.75, respectively (Table 1).

Similarly, *MO virgin*, MO / PCB N°0 and MO / PCB N°209 mixtures were fractionated by SCC and then qualitatively analyzed by TLC. As a result, *MO virgin* presents three fractions while the other two samples exhibit each four fractions. Calculation of R_f of all samples were subsequently performed. The corresponding results of fractions 1, 2, 3 of *MO virgin* were found as 0.98, 0.92, and 0.89 respectively. As expected, the same data were obtained for the MO-part of the MO / PCB N°0 and MO / PCB N°209 mixtures. Moreover, the retention factors of the forth fractions yield almost the same values as those calculated for PCB N°0 and PCB N°209.

The MO compounds (paraffins, naphthenes...) present a more polar character than PCBs, explaining thus that they were less retained by the stationary phase compared to PCBs, which migrate more slowly.

Table 1. Results of TLC analysis of MO / PCB systems.

Analysis of PCB	
	 <p>M- Mixture of PCBs N°0, 15, and 209 A- PCB N°0 B- PCB N°15 C- PCB N°209</p>
Before the separation of MO / PCB systems	
	 <p>1- <i>MO virgin</i> (MO) 2- MO / PCB N°0 3- MO / PCB N°209 4- <i>MO contaminated</i> (unknown sample)</p>
Control of the separated fractions of MO / PCB systems	
<p>1-<i>MO virgin</i> (MO)</p>  	<p>2-MO / PCB N°0</p>  
<p>3-MO / PCB N°209</p>  	<p>4-<i>MO contaminated</i></p>  

The unknown sample (*MO contaminated*) was also studied by the same chromatographic separation process; showing six fractions (Table 1). Further analysis by GC-MS was needed on the three fractions that do not belong to *MO virgin*, in order to detect, distinguish and quantify PCBs present in this mixture.

Detection and identification of PCBs in Mineral Oil by GC-MS

In order to obtain accurate information on the qualitative and quantitative identification of individual PCBs by GC-MS, detailed analysis of model systems based on a series of 18 PCB compounds was undertaken. This preliminary study comprised establishment of discrete calibration data for each PCB molecule as function of concentration, and also investigation of detection limits, which were found around 2-3 ppm per PCB molecule.

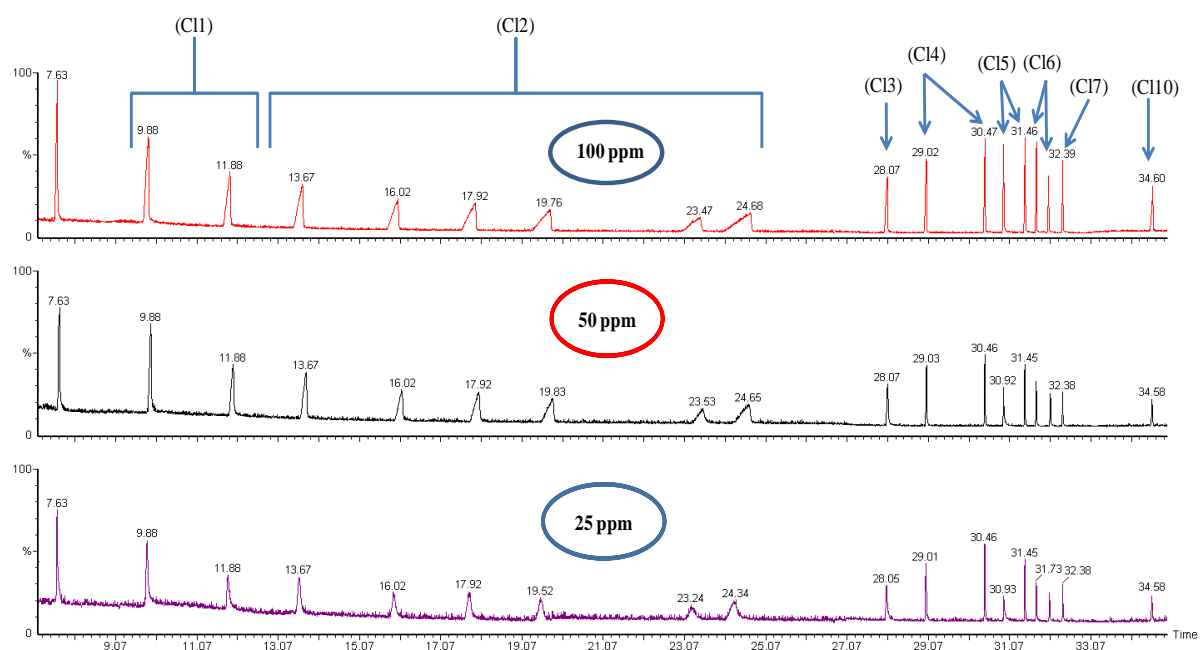


Figure 4. GC chromatograms of model mixtures including 18 PCBs with different concentrations.

The concentration of each PCB molecule in the model mixture is mentioned on the associated chromatogram. For example, in the case of the concentration of 100 ppm, the total PCB concentration is: $100 \text{ ppm} \times 18 = 1800 \text{ ppm} = 0.18 \text{ weight-\%}$.

It will thus be demonstrated that the proposed chromatic separation method allows to determine nature and concentration of PCB molecules far below the actual 50 ppm limitation of PCB content in transformer fluids. It will also be shown later (Table 2) that the retention times of PCB molecules obtained by GC remained constant comparing those from model PCB blends with those from PCB-containing fractions separated from MO / PCB mixtures by SCC.

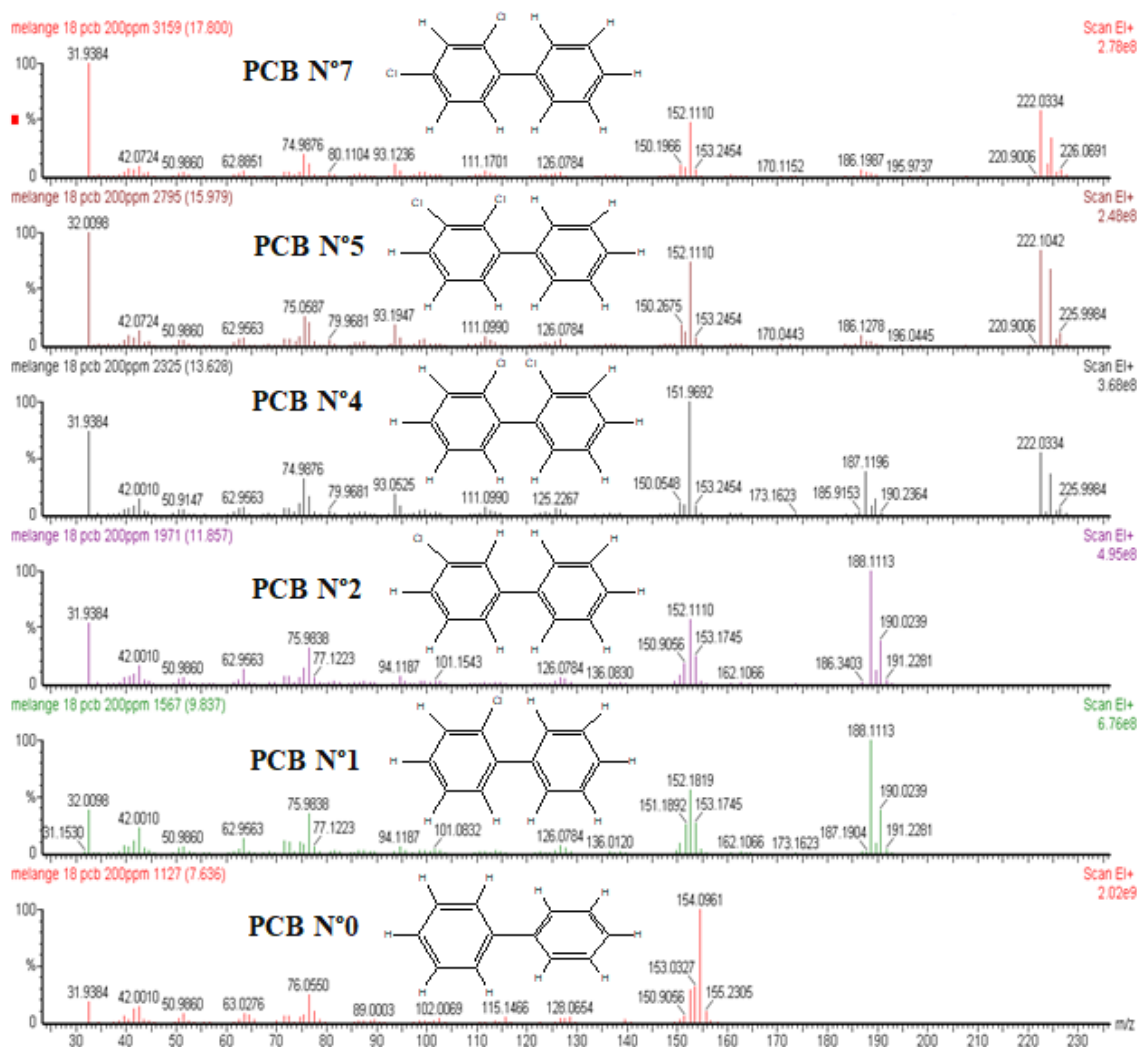


Figure 5a

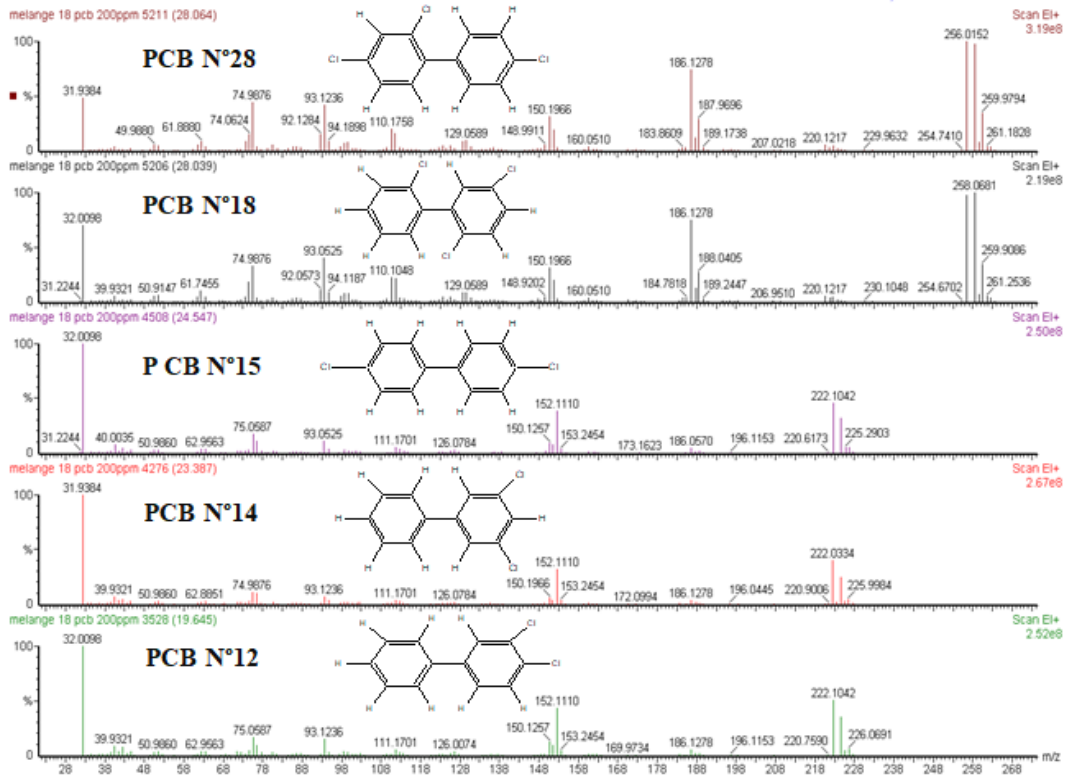


Figure 5b

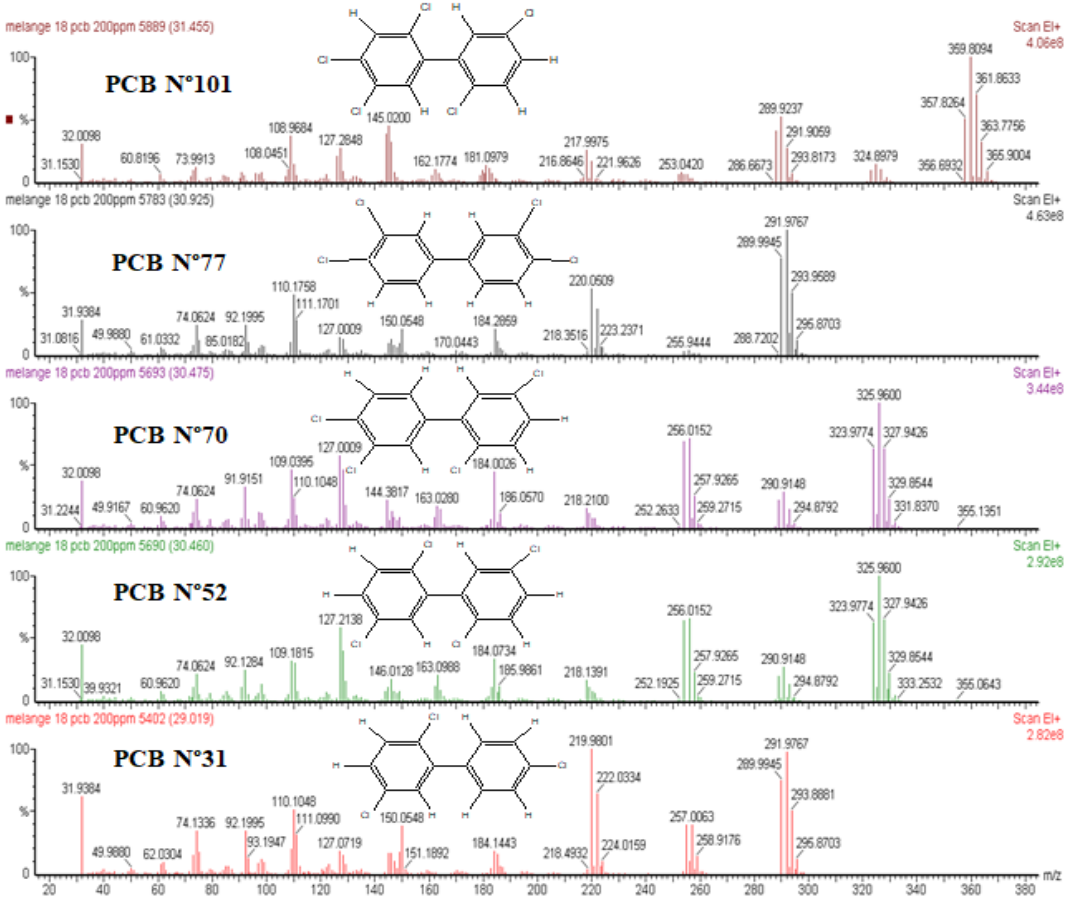


Figure 5c

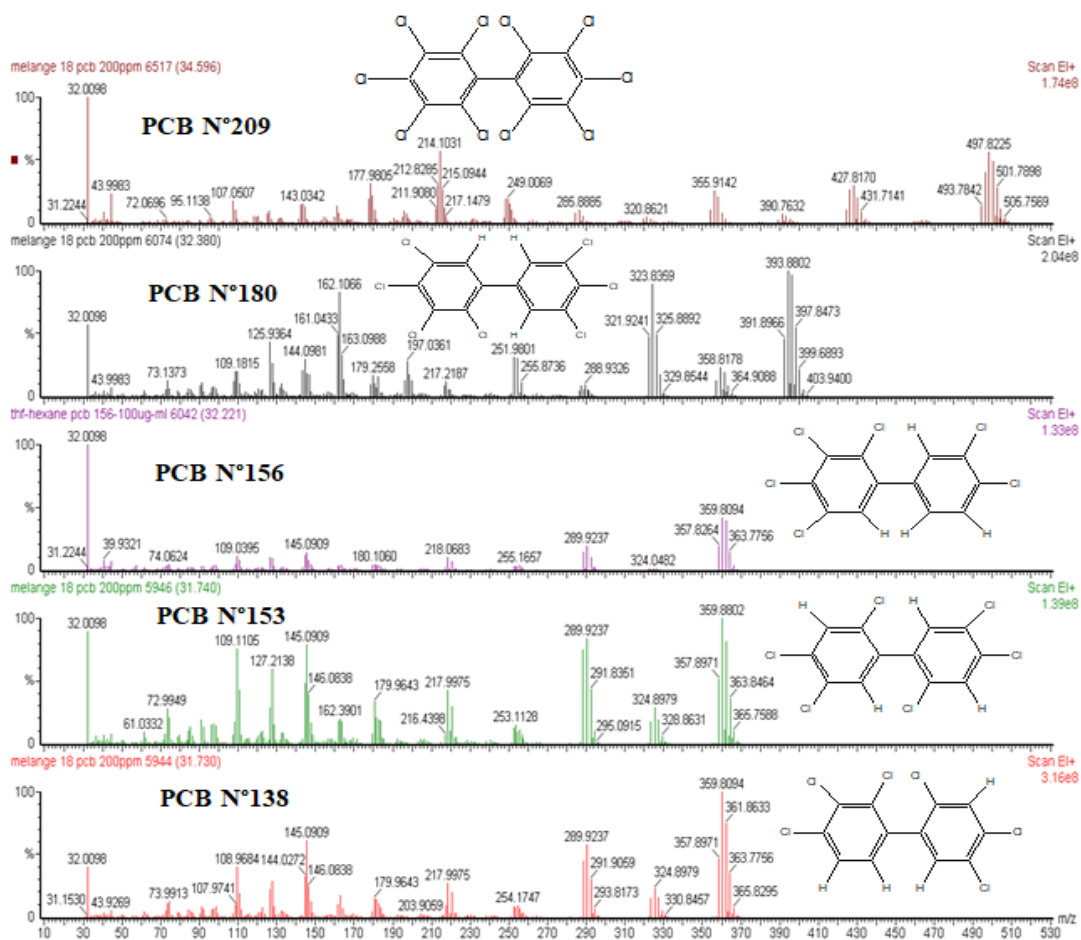


Figure 5d

Figure 5. Mass spectra of the 18 PCBs separated from the model mixture: a) PCBs N °1, 2, 3, 4, 5, 7; b) PCBs N °12, 14, 15, 18, 28; c) PCBs N °31, 52, 70, 77, 101; d) PCBs N °138, 153, 156, 180, 209.

Subsequently, model mixtures comprised of 18 PCB molecules (indicator PCBs, listed in Table 2) were prepared at different concentrations (10, 25, 50, 100, 150, 200 ppm). For example, in the case of the concentration of 25 ppm, the total PCB concentration of the sample is: $25 \text{ ppm} \times 18 = 450 \text{ ppm} = 0.045 \text{ weight-\%}$. The chromatograms of some of these PCB mixtures (25, 50, 100 ppm) were presented in Figure 4, and the mass spectra associated with each molecule exhibiting specific retention times were shown in Figure 5. This method allowed detection, separation and identification of PCB molecules from model mixtures with

different concentrations of PCBs, and also of PCB fractions separated from MO / PCB systems (Figure 6), by comparing the obtained retention times with those of injected PCB molecules (standards) and also with data retrieved from an electronic library (NIST/EPA/NIH Mass Spectral Library (NIST 14)).

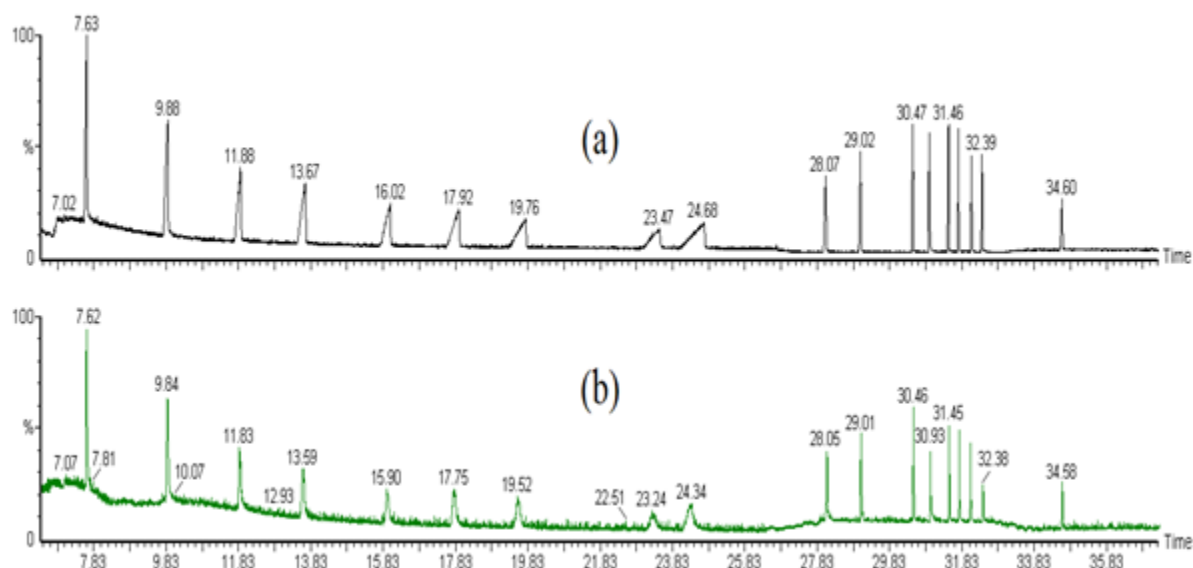


Figure 6. GC chromatograms obtained from (a) a model mixture of 18 PCB congeners (200 ppm) (b) the PCB fraction separated from the model MO / 18 PCB blend via SCC.

Since PCB compounds possess similar chemical structures and differ only in the degree of chlorination, their vapor pressure was found directly proportional to the retention time on stationary phases of non-polar GC columns such as the one used in this report (Ballschmitter et al., 1993; Chamkasem et al., 2016). The molecular interactions of the PCB molecules with the stationary phase are thus governed by van der Waals forces (dispersive interactions). In addition, there are other effects affecting the separation of PCB on GC columns, like steric effects influencing the shape of the molecules, and dipole-dipole interactions.

Table 2. Retention parameters for PCB molecules from model mixtures (*mod*) and separated PCB fractions (*sf*) from MO / PCB mixtures.

Type of PCB	t_R (min)	t_R' (min)	k'	α	\dot{u}	N	R_s
	Retention time	Reduced retention time	Capacity factor	Selectivity factor	Width of the base peak	Number of theoretical plates	Column resolution
	<i>mod/sf</i>	<i>mod/sf</i>	<i>mod/sf</i>	<i>mod/sf</i>	<i>mod/sf</i>	<i>mod/sf</i>	<i>mod/sf</i>
PCB N°0	7.63/7.62	2.63/2.58	0.53/0.51		0.29/0.28	11468/11850	
PCB N°1	9.88/9.84	4.84/4.8	0.96/0.95	1.83/1.86	0.18/0.17	46905/50586	9.31/9.76
PCB N°2	11.88/11.83	6.88/6.79	1.38/1.35	1.43/1.41	0.20/0.20	53734/55979	10.78/10.61
PCB N°4	13.67/13.59	8.67/8.55	1.73/1.70	1.26/1.26	0.31/0.30	31112/32615	6.95/7.03
PCB N°5	16.02/15.90	11.02/10.86	2.20/2.15	1.27/1.27	0.62/0.58	10546/1024	5.03/5.24
PCB N°7	17.92/17.75	12.92/12.71	2.58/2.52	1.17/1.17	0.41/0.39	29833/32973	3.66/3.81
PCB N°12	19.76/19.59	14.76/14.91	2.95/2.89	1.14/1.14	0.46/0.43	28893/33054	4.18/4.48
PCB N°14	23.47/23.24	18.47/18.2	3.69/3.61	1.25/1.25	0.51/0.50	33885/34019	7.61/7.81
PCB N°15	24.68/24.34	19.68/19.3	3.94/3.83	1.07/1.06	0.63/0.62	24554/24344	2.12/2
PCB N°28	28.07/28.05	23.07/23.01	4.61/4.57	1.17/1.19	0.14/0.14	599610/651562	8.75/9.72
PCB N°52	29/29.01	24/23.97	4.8/4.76	1.04/1.04	0.13/0.12	861184/919696	6.89/7.38
PCB N°77	30.47/30.46	25.47/25.42	5.09/5.04	1.06/1.06	0.13/0.13	815075/865041	11.31/11.5
PCB N°101	30.93/30.93	25.93/25.89	5.19/5.14	1.02/1.09	0.17/0.13	499809/919814	2.97/3.61
PCB N°138	31.46/31.32	26.46/26.28	5.29/5.21	1.02/1.02	0.11/0.11	1197407/1297113	3.66/3.59
PCB N°153	31.74/31.70	26.74/26.66	5.35/5.28	1.01/1.01	0.12/0.12	1031606/1062743	2.33/3.60
PCB N°156	32.22/32.20	27.22/27.16	5.44/5.39	1.02/1.02	0.14/0.14	789034/822725	3.41/3.77
PCB N°180	32.41/32.38	27.39/27.34	5.48/5.42	1.01/1.01	0.12/0.12	1057306/1091013	1.49/1.35
PCB N°209	34.60/34.58	29.6/29.56	5.92/5.85	1.08/1.08	0.14/0.13	1051005/1098049	16.93/17.19

The increase of the order of the separated PCBs in terms of the retention time followed essentially structure-retention relationships described in literature (Li et al., 2016). For example, the shortest retention time of 7.6 min was observed for the unsubstituted biphenyl (PCB N°0), whereas the longest retention time of 34.6 min was found for the fully chlorinated PCB N°209. It can be seen that the chromatographic method applied also allowed the separation by GC of PCBs possessing the same number of chlorines, such as PCB N°4, N°5, N°7, N°12, N°14, and N°15 (Table 2).

The capacity (k') and selectivity (α) factors of PCBs calculated from their normal (t_R) and reduced (t'_R) retention times allow to describe the rate of progression of PCB in the chosen stationary phase and to estimate the extent to which the latter can separate them. Indeed, three situations have to be distinguished (Chamkasem et al., 2016) : $k' < 1$: elution is too fast; which is the case for PCBs N°0 and N°1; $1 < k' < 5$: optimal elution for PCBs N°2, N°4, N°5, N°7, N°12, N°14, N°15, N°28, and N°52; $k' > 5$: elution is too slow for PCBs N°77, N°101, N°138, N°153, N°156, N°180, and N°209. The obtained capacity factors can be directly related to the chemical structures of the PCBs, determining the molecular interactions with the non-polar stationary phase. Absence of chlorines will thus lead to a high elution rate ($k' < 1$) as it is the case for PCB N°0, which represents an apolar neutral molecule. The presence of only one chlorine in the ortho-position already increases k' from 0.53 (PCB N°0) to 0.96 (PCB N°1), close to 1 (case of optimal elution). In the case of PCB molecules with an adjacent k' factor greater than 5, the number of chlorine varies between 4 and 10. Indeed, these relatively high numbers generate more molecular interactions between PCBs and the stationary phase. These “heavy” indicator PCBs, exhibiting long retention times, represent good separation characteristics on the GC column.

The selectivity factor α (ratio of the distribution coefficients) was calculated in relation to the peaks of neighboring PCBs. This factor makes it possible to estimate the separating power of

the used column. It was found that α values of low-chlorinated PCBs were slightly higher compared to the corresponding data of highly-chlorinated compounds; this is probably related to the mass effect of the PCBs which depends essentially on the number of chlorines.

The efficiency of the chromatographic column, which is directly proportional to the number of theoretical plateaus (N), depends on the degree of peak broadening of PCB peaks (ω), occurring when the PCB compound moves through the column. This broadening depends on the residence time of each PCB molecule. The resolution of the column (R_s) was also calculated in order to measure the ability to separate PCBs that have neighboring peaks. Three situations were highlighted (Table 2): If $R_s > 1.5$: neighboring PCBs were completely separated; the situation $R_s \approx 1$ corresponds to incomplete separation of adjacent PCBs, and if $R_s < 0.75$, bordering PCBs were poorly separated. The results shown in Table 2 of the R_s calculated from PCB-model mixtures and separated PCB fractions from MO / PCB blends confirm the correct choice of the stationary phase of GC.

It can be deduced that all results obtained from the model mixture (18 PCB molecules) and the PCB fraction separated from the model MO / 18 PCB blend were almost identical, approving thus the separation method described here.

The correlation coefficients of the PCBs calibration curves (Figure S1) show a good linearity (between 0.992 and 0.999). The LOD and LOQ values were determined from the data of the calibration curves of PCBs (Table 3). These values confirm the reliability of the separation method described above, showing that the pretreatment used is consistent for complex matrices such as transformer oils.

Table 3. Linearity, limit of detection (*LOD*) and limit of quantification (*LOQ*) obtained for each PCB calibration curve.

PCB	Linearity	<i>LOD</i> (ppm)	<i>LOQ</i> (ppm)
PCB N°0	0.997	9	30
PCB N°1	0.988	15	45
PCB N°2	0.999	4	14
PCB N°4	0.998	7	2
PCB N°5	0.996	10	32
PCB N°7	0.995	13	40
PCB N°12	0.999	5	17
PCB N°14	0.997	10	30
PCB N°15	0.998	7	22
PCB N°18	0.995	12	38
PCB N°28	0.999	2	7
PCB N°31	0.992	13	40
PCB N°52	0.998	7	21
PCB N°70	0.999	6	17
PCB N°77	0.999	6	17
PCB N°101	0.995	11	35
PCB N°138	0.999	2	7
PCB N°153	0.994	13	39
PCB N°156	0.999	3	10
PCB N°180	0.995	12	38
PCB N°209	0.993	14	45

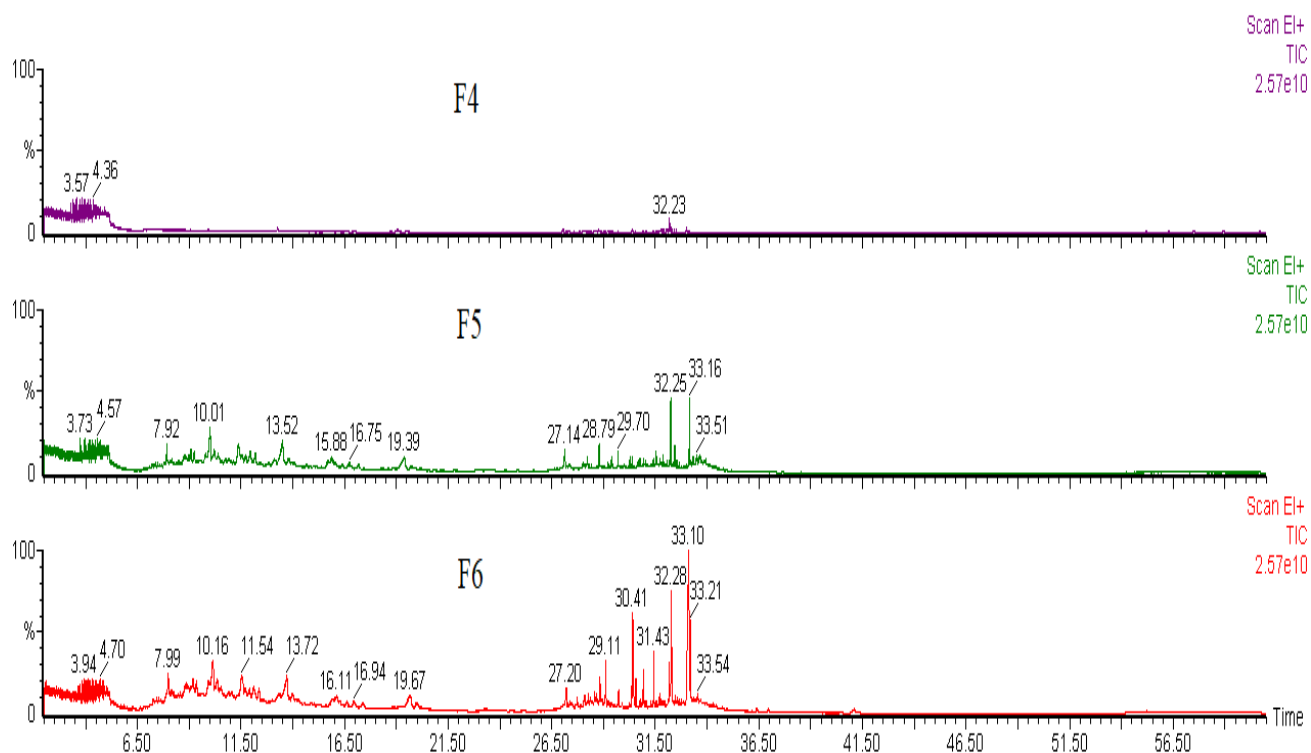


Figure 7. GC chromatograms corresponding to the fractions 4-6 (F4, F5, F6) of a sample containing an unknown number and quantity of PCBs (*MO contaminated*).

The chromatographic separation procedure described above was also applied on a sample denominated *MO contaminated*, containing unknown number and quantities of PCBs. In particular, fractions F4 - F6 were analyzed (Figure 7), which do not belong to *MO virgin*. The results in terms of identified and quantitatively determined indicator PCBs were presented in Table 4. The concentrations of the different PCB congeners were determined using multiple calibration curves, following the same procedure as mentioned above. It can be seen that the concentration of PCBs in *MO contaminated* greatly exceeds the limit imposed by current legislation (50 ppm PCB), with a total PCB concentration of 219 ppm. The results presented in Table 4 correspond to the analysis of fraction F6, which contains qualitatively the same indicator PCB molecules but at their highest concentration, compared to the other fractions F4 and F5.

Table 4. Identification and quantification of *indicator PCBs* detected in the unknown *MO contaminated* sample. The results presented here correspond to the analysis of fraction F6.

Type of indicator PCB	t_R (min)	Concentration (ppm)
PCB N°156	32.36	52
PCB N°138	31.44	27
PCB N°77	29.1	42
PCB N°52	28.01	23
PCB N°31	24.56	10
PCB N°12	19.67	13
PCB N°7	16.11	7
PCB N°4	13.7	9
PCB N°2	11.8	8
PCB N°1	10.1	13
PCB N°0	7.9	11

Conclusions

A new, simplified and efficient method for separating PCB molecules from contaminated transformer mineral oils was established, allowing to identify these toxic molecules and to determine their concentrations. A chromatographic separation method by silica column was developed and applied on model systems composed of known quantities of PCB molecules mixed with PCB-free MO. An unknown sample of PCB-contaminated MO was investigated as well. GC-MS was applied as powerful analytical technique to evaluate the efficiency of the separation method in terms of the qualitative and quantitative analysis of the different PCB containing fractions. Indeed, these data confirmed reliably and efficiency of the proposed separation process.

Acknowledgements

This work received financial support from ADEME, University of Lille, and Maxei group. The authors would like to thank these organizations for providing an administrative framework and financial support. The authors would also like to thank Stéphanie Flament and Fabrice Bray for carrying out Maldi-Tof experiments.

References

Afful S, Awudza JAM, Twumasi SK, et al. (2013) Determination of indicator polychlorinated biphenyls (PCBs) by gas chromatography–electron capture detector. *Chemosphere* 93: 1556-1560.

<https://doi.org/10.1016/j.chemosphere.2013.08.001>

Ballschmiter K and Zell M (1980) Analysis of Polychlorinated Biphenyls (PCB) by Glass Capillary Gas Chromatography. *Fresenius Journal of Analytical Chemistry* 302: 20-31.

<https://doi.org/10.1007/BF00469758>

Ballschmiter K, Bacher R, Mennel A, et al. (1992) The determination of chlorinated biphenyls, chlorinated dibenzodioxins, and chlorinated dibenzofurans by GC-MS. *Journal of High Resolution Chromatography* 15: 260-270.

<https://doi.org/10.1002/jhrc.1240150411>

Ballschmiter K, Mennel A, and Buyten J (1993) Long chain alkyl-polysiloxanes as non-polar stationary phases in capillary gas chromatography. *Fresenius Journal of Analytical Chemistry* 346: 396- 402.

<https://doi.org/10.1007/BF00325850>

Barcauskaitė, K (2019) Gas chromatographic analysis of polychlorinated biphenyls in compost samples from different origin. *Waste Management & Research* 37: 556-562.

<https://doi.org/10.1177/0734242x19828156>

Borsi H and Gockenbach E (2005) Properties of ester liquid midel 7131 as an alternative liquid to mineral oil for transformers. *IEEE International Conference on Dielectric Liquids* 2005: 377-380.

<https://doi.org/10.1109/ICDL.2005.1490104>

Bunert E, Bernhold B, Woidtke JN, et al. (2019) Non-radioactive electron capture detector for gas chromatography A possible replacement for radioactive detectors. *Journal of Chromatography A* 1606: 460384.

<https://doi.org/10.1016/j.chroma.2019.460384>

Bunert E, Kirk AT, Oermann J, et al. (2017) Electron capture detector based on a non-radioactive electron source: operating parameters vs. analytical performance, *Journal of Sensors and Sensor Systems* 6: 381-387.
<https://doi.org/10.5194/jsss-6-381-2017>

Chamkasem N, Lee S, and Harmon T (2016) Analysis of 19 PCB congeners in catfish tissue using a modified QuEChERS method with GC–MS/MS. *Food Chemistry* 192: 900-906.
<https://doi.org/10.1016/j.foodchem.2015.07.088>

Ciura K, Dziomba S, Nowakowska J, et al. (2017) Thin layer chromatography in drug discovery process, *Journal of Chromatography A* 1520: 9-22.
<https://doi.org/10.1016/j.chroma.2017.09.015>

Clark AG and Thurbide KB (2015) An improved multiple flame photometric detector for gas chromatography. *Journal of Chromatography A* 1421: 154-161.
<https://doi.org/10.1016/j.chroma.2015.04.007>

Council Directive 96/59/EC of 16 September 1996 on the disposal of polychlorinated biphenyls and polychlorinated terphenyls (PCB/PCT), *Official Journal of the European Union* L 243 (1996) 31.
Available at : <http://data.europa.eu/eli/dir/1996/59/2009-08-07>

Crucello J, Pierone DV, and Hantao LW (2020) Simple and cost-effective determination of polychlorinated biphenyls in insulating oils using an ionic liquid-based stationary phase and flow modulated comprehensive two-dimensional gas chromatography with electron capture detection. *Journal of Chromatography A* 1610: 460530.
<https://doi.org/10.1016/j.chroma.2019.460530>

De Kok A, Geerdink RB, De Vries G, et al. (1982) An evaluation of chromatographic methods for the analysis of polychlorinated terphenyls in environmental samples. *International Journal of Environmental Analytical Chemistry* 12: 99-122.
<https://doi.org/10.1080/03067318208071574>

Directive 2012/19/Eu of the European Parliament and of the Council of 4 July 2012 on Waste Electrical and Electronic Equipment (WEEE) (recast), *Official Journal of the European Union* L 197 (2012) 38-71. Available at : <http://data.europa.eu/eli/dir/2012/19/2018-07-04>

Dmitrovic J, Chan SC, and Chan SHY (2002) Analysis of pesticides and PCB congeners in serum by GC/MS with SPE sample cleanup. *Toxicology Letters* 134: 253-258.
[https://doi.org/10.1016/S0378-4274\(02\)00173-X](https://doi.org/10.1016/S0378-4274(02)00173-X)

Erickson MD and Kaley RG (2011) Applications of polychlorinated biphenyls. *Environmental Science and Pollution Research* 18: 135-151.
<https://doi.org/10.1007/s11356-010-0392-1>.

Huang Y, Gao S, Wu S, et al. (2021) Stationary monitoring and source apportionment of VOCs in a chemical industrial park by combining rapid direct-inlet MSs with a GC-FID/MS. *Science of the Total Environment* 795: 148639.
<https://doi.org/10.1016/j.scitotenv.2021.148639>

Jennings W (2000) Chapter II Chromatography: Gas: Column Technology. In: Wilson ID, Cooke M, and Poole CF (eds.) *Encyclopedia of Separation Science*, San Diego (CA): Academic Press, 427-434.

<https://doi.org/10.1016/B0-12-226770-2/00141-1>

Knerr S and Schrenk D (2006) Carcinogenicity of “Non-Dioxinlike” Polychlorinated Biphenyls. *Critical Reviews in Toxicology* 36: 663-694.

<https://doi.org/10.1080/10408440600845304>

Li A, Gao J, Freels S, et al. (2016) Predicting gas chromatography relative retention times for polychlorinated biphenyls using chlorine substitution pattern contribution method. *Journal of Chromatography A* 1427: 161-169.

<https://doi.org/10.1016/j.chroma.2015.11.079>

Li X, Zhen Y, Wang R, et al. (2021) Application of gas chromatography coupled to triple quadrupole mass spectrometry (GC-(APCI)MS/MS) in determination of PCBs (mono-to deca-) and PCDD/Fs in Chinese mitten crab food webs. *Chemosphere* 265: 129055.

<https://doi.org/10.1016/j.chemosphere.2020.129055>

Liaud C, Nguyen NT, Nasreddine R, et al. (2014) Experimental performances study of a transportable GC-PID and two thermo-desorption based methods coupled to FID and MS detection to assess BTEX exposure at sub-ppb level in air. *Talanta* 127: 33-42.

<https://doi.org/10.1016/j.talanta.2014.04.001>

Nikolaev VF, Foss LE, Ilyasov RA, et al. (2019) Method for laboratory testing of solvents for enhanced oil recovery based on dispersiometry and thin layer chromatography. *Fuel* 235: 433-436.

<https://doi.org/10.1016/j.fuel.2018.08.009>

Pelitli V, Doğan O and Koroğlu HJ (2015) Transformer Oils Potential for PCBs Contamination. *International Journal of Metallurgical & Materials Engineering* 1: 114.

<http://dx.doi.org/10.15344/2455-2372/2015/114>

PCB-elimination-network. Available at: www.unenvironment.org/explore-topics/chemicals-waste/what-we-do/persistent-organic-pollutants/pcb-elimination-network (accessed 03 August 2021).

Poole CF (2013) Derivatization reactions for use with the electron-capture detector. *Journal of Chromatography A* 1296: 15–24.

<https://doi.org/10.1016/j.chroma.2013.01.108>

Regulation (Eu) 2019/1021 of the European Parliament and of the Council of 20 June 2019 on persistent organic pollutants (recast), *Official Journal of the European Union* L169 (2019) 45-77. Available at : <http://data.europa.eu/eli/reg/2019/1021/2020-09-07>

Rossberg M, Lendle W, Pfeleiderer G, et al. (2006) Chlorinated Hydrocarbons. *Ullmann's Encyclopedia of Industrial Chemistry*. Weinheim: Wiley-VCH.

https://doi.org/10.1002/14356007.a06_233.pub2

Rouse TO (1998) Mineral insulating oil in transformers. *IEEE Electrical Insulation Magazine* 14: 6-16.

<https://ieeexplore.ieee.org/abstract/document/675572/authors#authors>

Stockholm Convention on Persistent Organic Chemicals (POPs), article 3 (1) (a) (i), Annex A, Part II (a), (e). Available at :

http://chm.pops.int/Portals/0/Repository/convention_text/UNEP-POPS-COP-CONVTEXT-FULL.English.PDF (accessed 03 August 2021).

Takada M, Toda H, and Uchida R (2001) A new rapid method for quantification of PCBs in transformer oil. *Chemosphere* 43: 455-459.

[https://doi.org/10.1016/S0045-6535\(00\)00394-5](https://doi.org/10.1016/S0045-6535(00)00394-5)

Turrio-Baldassarri L, Di Domenico A, Fulgenzi AR, et al. (1993) Differences in polychlorobiphenyl (PCB) contamination patterns in various environmental matrices. *Science of the Total Environment* 134: 1439-1451.

[https://doi.org/10.1016/S0048-9697\(05\)80149-4](https://doi.org/10.1016/S0048-9697(05)80149-4)

Wang P, Rashid M, Liu J, et al. (2016) Identification of multi-insecticide residues using GC-NPD and the degradation kinetics of chlorpyrifos in sweet corn and soils. *Food Chemistry* 212: 420-426.

<https://doi.org/10.1016/j.foodchem.2016.05.008>

Weber R, Watson A, Forter M, et al. (2011) Persistent organic pollutants and landfills - a review of past experiences and future challenges. *Waste Management & Research* 29: 107-121.

<https://doi.org/10.1177/0734242X10390730>.

Wittsiepe J, Nestola M, Kohne M, et al. (2014) Determination of polychlorinated biphenyls and organochlorine pesticides in small volumes of human blood by high-throughput on-line SPE-LVI-GC-HRMS, *Journal of Chromatography B* 945-946: 217-224.

<https://doi.org/10.1016/j.jchromb.2013.11.059>

Xu W, Wang X and Cai Z (2013) Analytical chemistry of the persistent organic pollutants identified in the Stockholm Convention: A review. *Analytica Chimica Acta* 790: 1-13.

<https://doi.org/10.1016/j.aca.2013.04.026>.