



**HAL**  
open science

## Inventory and conservation of Triassic vertebrate tracks in the Monts d'Ardèche UNESCO global Geopark, France.

Emmanuel Fara, Jean-David Moreau, Léo Szewczyk, Nicolas Klee, Georges Gand, Emmanuelle Vennin

### ► To cite this version:

Emmanuel Fara, Jean-David Moreau, Léo Szewczyk, Nicolas Klee, Georges Gand, et al.. Inventory and conservation of Triassic vertebrate tracks in the Monts d'Ardèche UNESCO global Geopark, France.. *Geoconservation Research*, 2021, 4 (2), pp.317-329. 10.30486/gcr.2021.1912278.1045 . hal-03833429

**HAL Id: hal-03833429**

**<https://hal.science/hal-03833429>**

Submitted on 26 Feb 2024

**HAL** is a multi-disciplinary open access archive for the deposit and dissemination of scientific research documents, whether they are published or not. The documents may come from teaching and research institutions in France or abroad, or from public or private research centers.

L'archive ouverte pluridisciplinaire **HAL**, est destinée au dépôt et à la diffusion de documents scientifiques de niveau recherche, publiés ou non, émanant des établissements d'enseignement et de recherche français ou étrangers, des laboratoires publics ou privés.

# Inventory and Conservation of Triassic Vertebrate Tracks in the Monts d'Ardèche UNESCO Global Geopark, France

Emmanuel Fara<sup>1,\*</sup>, Jean-David Moreau<sup>1</sup>, Leo Szewczyk<sup>2</sup>, Nicolas Klee<sup>3</sup>, Georges Gand<sup>1</sup>,  
Emmanuelle Vennin<sup>1</sup>

<sup>1</sup> Biogéosciences, UMR CNRS 6282, Université de Bourgogne Franche Comté, 6 Boulevard Gabriel, 21000 Dijon, France ([emmanuel.fara@u-bourgogne.fr](mailto:emmanuel.fara@u-bourgogne.fr))

<sup>2</sup> MINES ParisTech, PSL Research University, Centre de Géosciences, 35 rue St Honoré 77305 Fontainebleau Cedex, France

<sup>3</sup> Parc Naturel Régional des Monts d'Ardèche, Jaujac, France

\* Corresponding author

ORCID:

Emmanuel Fara: <https://orcid.org/0000-0002-7991-4467>

Jean-David Moreau: <https://orcid.org/0000-0003-2978-5983>

Leo Szewczyk: <https://orcid.org/0000-0001-7099-4176>

Emmanuelle Vennin: <https://orcid.org/0000-0002-5899-0399>

## Abstract

The Regional Natural Park (RNP) of the Monts d'Ardèche, located in south-eastern France, became the Monts d'Ardèche UNESCO Global Geopark in September 2014. This territory possesses significant geological structures, including numerous and rich Middle-Late Triassic vertebrate tracksites. The UNESCO Global Geopark label helped to formalize a long-standing partnership for the study of this ichnological patrimony between the RNP of the Monts d'Ardèche and the University of Burgundy. Developing scientific research, protection, training and outreach are the main lines of the agreement signed in 2015. The strategy is to

make a detailed and sedimentologically contextualized inventory of vertebrate tracks in the Geopark and its surroundings, establish conservation and protection priorities, set up geosites for the public and involve local people in all these activities. To date, 15 tracksites and nearly a thousand individual tracks have been inventoried. The locality “Le Sartre” stands out as being the first recognized geosite amongst the remarkable tracksites in Ardèche. After four years of scientific investigations and fitting out works, it was inaugurated in October 2020. This geosite is the first equipped locality in France to show Late Triassic dinosaur tracks and to be freely accessible to the public. This success was made possible by the intellectual, logistic and social involvement of local people throughout, by acknowledgement of these contributions, and by the capacity of all actors to collaborate efficiently with each other. With more than 1000 fossil vertebrate tracks still awaiting to be valorized in Ardèche, the designation as a UNESCO Global Geopark clearly marked a turning point from academic-only to articulated research, conservation and geotouristic initiatives involving local communities.

**Keywords:** Ardèche, UNESCO Global Geopark, Ichnology, Dinosaur tracks, Triassic

## **Introduction**

The Regional Natural Park (RNP) of the Monts d'Ardèche, located in south-eastern France, obtained the designation of UNESCO Global Geopark in September 2014. At this point, it joined the network of 161 UNESCO Global Geoparks located in 44 countries. It is the 5<sup>th</sup> designated Geopark, out of seven, in France. Among its many commitments, the Monts d'Ardèche UNESCO Global Geopark is strengthening its involvement in scientific research and outreach to better understand and promote its Permian and Triassic palontological heritage. This includes fossil tracks and trackways of vertebrates, whose scientific study is the field of ichnology. The University of Burgundy (Biogéosciences Laboratory, Dijon, France) has a well-known expertise in paleontology, ichnology and sedimentology and it carries out scientific investigations that overlap with the endeavor of the Monts d'Ardèche UNESCO Global Geopark. Since the late 1960s, this academic institution has contributed substantially to the scientific description of the exceptional ichnological heritage of Ardèche (Demathieu & Samana 1968, Courel & Demathieu 1976, 2000; Courel *et al.* 1982; Gand 1994; Gand *et al.* 2005, 2007; Gand & Demathieu 2005; Szewczyk *et al.* 2020).

This long-standing partnership was formally concretized in November 2015 by an agreement between the RNP of the Monts d'Ardèche and the University of Burgundy. This agreement is based on four components: (1) scientific research, (2) protection of ichnological sites, (2) training of students and professionals, and (4) scientific outreach. The main aims are to make a detailed and sedimentologically contextualized inventory of Triassic vertebrate tracks within the Geopark and its surroundings, to establish conservation and protection priorities, and to set up ichnological geosites for the public (Fara & Gand, 2015; Fara *et al.* 2019). In this paper, we focus on the Triassic ichnological patrimony of Ardèche and we describe the strategy and initiatives undertaken to promote this remarkable geoheritage.

## **Geological context and areas of ichnological interest**

The Monts d'Ardèche UNESCO Global Geopark is located on the southeastern edge of the Massif Central (southern France). By standing at the interface between plutonic, metamorphic, volcanic and sedimentary rocks, it gathers outstanding geological structures and evidence of their use by people, notably mining and construction. The limits of the Geopark circumscribe much of the regional Permian and Triassic sedimentary rocks that outcrop

mainly along a NE-SW strip between the towns of Privas and Les Vans (Fig. 1). Both mining activities and geological mapping contributed to the discoveries of fossil tracks in these rocks, especially in the Triassic (Blanc 1962; Demathieu & Samama 1968; Montenat 1968; Courel & Demathieu 1976, 2000; Courel *et al.* 1982; Gand 1994; Gand *et al.* 2005, 2007; Gand & Demathieu 2005).

#### Figure 1

In the stratigraphic series of the eastern edge of the Massif Central, whose nomenclature is complex, three main geological units yield Triassic vertebrate tracks: the “Grès du Roubreau” (*sensu* Courel *et al.* 1984 and Bourquin *et al.* 1995) representing the Middle Triassic (Anisian/Ladinian), and the “Ensemble grésodolomitique gris” and “Formation Bariolée d’Ucel” (*sensu* Bourquin *et al.* 1995) documenting the Upper Triassic (Carnian/Norian). The former is dominated by conglomerates and sandstones, whereas the latter is characterized by sandstones, microconglomerates and occasional argillite layers. These continental units have a fluvial origin and have been dated palynologically (Rouire *et al.* 1980; Courel *et al.* 1984, 1998; Poli *et al.* 1994; Elmi *et al.* 1996; Razin *et al.* 1996; Poli 1998). Together, they have yielded a famous ichnological heritage of reptilian footprints (Gand *et al.* 2007; Fig. 2).

#### Figure 2

### **Ichnological significance of the Monts d’Ardèche UNESCO Global Geopark**

The richness and abundance of Triassic vertebrate tracks within the Monts d’Ardèche UNESCO Global Geopark make the latter an exceptional area. To date, 15 tracksites and nearly 1000 individual tracks have been inventoried within the Geopark limits and its immediate surroundings (Fig. 1). There are still many tracks to be studied, but some of them have already been described scientifically including the erection of several ichnotaxa, such as *Isochirotherium felenci*, *Coelurosaurichnus grancieri*, *Coelurosaurichnus largentierensis* and *Dahutherium agilis* (Demathieu & Samana 1968; Montenat 1968; Courel & Demathieu 1976, 2000; Gand *et al.* 2005, 2007; Gand & Demathieu 2005). Although the validity of some of these ichnotaxa can be challenged, they demonstrate the remarkable ichnological potential of the Triassic sedimentary rocks in Ardèche.

Beyond richness and abundance, this ichnological patrimony is also outstanding as it documents major episodes in the macroevolution of Triassic reptiles, most notably dinosaurs (reptiles belonging to the bird lineage) and pseudosuchians (reptiles belonging to the crocodylian lineage). Indeed, Middle Triassic ichnoassemblages in Ardèche illustrate pseudosuchian-dominated faunas (Demathieu & Samama 1968; Courel & Demathieu 1976; Gand & Demathieu 2005; Gand *et al.* 2007), whereas Late Triassic ichnoassemblages are dominated by dinosaur tracks and trackways (Courel & Demathieu 1963, 1976, 2000; Demathieu & Samama 1968; Gand *et al.* 2007). Such a contrast is a well-known macroevolutionary pattern documented in Europe, South America, North America and Africa. It illustrates a profound faunal turnover within terrestrial ecosystems that occurred during the Carnian (*e.g.* Benton, 1986; Bernardi *et al.* 2018; Benton *et al.* 2018; Dal Corso *et al.* 2020). Some lineages suffered major extinctions (rhynchosaurs and dicynodonts), while others first appeared or diversified in that geological interval (crocodylomorphs, dinosaurs, phytosaurs, rauisuchians, rhynchocephalians). Although the dinosaur stem lineage (Dinosauromorpha) first appeared in the Early Triassic (Brusatte *et al.* 2011), this lineage remained relatively inconspicuous until the Carnian after which it increased in diversity and morphological disparity at the expense of pseudosuchians (Brusatte *et al.* 2008). The causes and precise timing of this major faunal turnover remain elusive, but the Carnian is now identified as an interval characterized by major paleoenvironmental changes, including the intense volcanism in the Wrangellia Large Igneous Province, the Carnian Pluvial Episode and some perturbations of the carbon cycle (Simms & Ruffell 1989; Hornung *et al.* 2007; Dal Corso *et al.* 2012, 2015, 2018, 2020; Sun *et al.* 2016; Bernardi *et al.* 2018).

In addition, tracks of Triassic reptiles found in the Monts d'Ardèche UNESCO Global Geopark are unique because of the coarseness of the sedimentary rocks hosting them. An outstanding example is provided by the locality named "Le Sartre" located in the town of Ucel, near Aubenas. It stands out as being the first recognized ichnological geosite in Ardèche. More than 300 reptilian imprints are preserved in a remarkably coarse-grained sedimentary layer corresponding to a medium- to coarse-grained quartz arenite that is microconglomeratic locally. This unusual occurrence challenges prevailing preservation models and it highlights the diversity of taphonomic pathways leading to ichnoassemblages (Szewczyk *et al.* 2020). It also illustrates the contrasting preservation potential of true tracks (imprints left on the actual walking surface), undertracks (imprints resulting from the

deformation of the sedimentary layers below the walking surface) and overtracks (imprints corresponding to a shallow sedimentary cover of true tracks after the latter formed).

Overall, the ichnological significance of the Monts d'Ardèche UNESCO Global Geopark stands in its ability to stimulate scientific questions about ichnodiversity, macroevolutionary transition and taphonomic processes involved in track formation and preservation.

### **From scientific investigations to education and geotourism: the key role of Geoparks and local actors**

The keyword “dinosaur” is a formidable asset for most touristic initiatives (Laws & Scott 2003; Pérez-Lorente 2015; Alcalá *et al.* 2016; Cobos & Alcalá 2017; Lkebir *et al.* 2020), so Geopark actors and local authorities have easily perceived the great potential of the regional ichnological patrimony, and they actively contribute to extend and protect the most promising sites. A good example is given by Le Sartre geosite. After four years of scientific investigations and recent extension/installation works, it was inaugurated at the beginning of October 2020 (Fig. 3). This geosite is the first equipped locality in France (and probably in Europe) to show Late Triassic dinosaur tracks and to be freely accessible to the public. Such a success has been made possible by the involvement of local people throughout the process and by the outstanding capacity of all actors to collaborate efficiently with each other. The key partners united by this Geopark initiative are the RNP of the Monts d'Ardèche, the Ucel Municipality and the Biogéosciences laboratory, with financial support by the European LEADER program, the Région Auvergne-Rhône-Alpes, the Département de l'Ardèche, and the community of municipalities from the Bassin d'Aubenas.

#### **Figure 3**

The Le Sartre geosite was discovered by a naturalist neighbor (Michel Verolet) who first alerted a professional ichnologist (G.G.) back in 2007. This turned out to be the start of a long-term and fruitful collaboration that initiated the study of Le Sartre and the identification of several other important ichnosites in Ardèche. Beyond a shared curiosity for natural objects, the strength of this ongoing partnership comes from the involvement of local amateurs into the Geopark-driven initiatives and by the acknowledgement of their significant contribution at all stages of the process. The rising number of volunteers for recent cleaning or extension works witnesses the expansion of popular enthusiasm (Fig. 4A–B). Moreover,

the early involvement of local people in ichnological investigations helped to improve and consolidate the reciprocal trust between academics and local people. This can be measured, for example, by the increasing number of notifications given by inhabitants to researchers about private specimens and sites that were kept secret until now. The absence of any direct economic or financial benefit is certainly a key factor in consolidating this partnership and transparency. Informal and formal communication further increased the awareness of local people about the nature, richness and patrimonial value of their immediate geological surroundings. In that perspective, we promote the notion of a universal and shared patrimony during all visits, conferences and informal discussions with local inhabitants and tourists alike (Fig. 4C–D).

#### Figure 4

As expected, the Geopark label also stimulated articulation and coordination among academic actors, local associations and scholarly societies (*e.g.* Société Géologique d’Ardèche, association Clapas, Le CPIE du Velay), as well as local economic activities and scientific illustrators. The Monts d’Ardèche UNESCO Global Geopark is now able to offer educational toolkits, such as annual conference cycles, geosite maps, rock identification guides and geological timescales illustrated by regional features. All this material is freely available online. Services are also proposed to high-school teachers in order to set up pedagogic activities in natural sciences, geography and history about this regional geological heritage. Visitors at Le Sartre geosite are also self-guided thanks to richly-illustrated explanatory boards, visual targeting tubes and touchable 3D replicas of emblematic reptilian footprints (Fig. 3E–F).

Furthermore, touristic visits can focus on various themes, one dedicated to tracking dinosaurs as it includes visits to the Le Sartre geosite and a local paleontological museum. Although there is currently no geotrail devoted to ichnology in Ardèche, this possibility is currently being investigated as many ichnosites are located in natural but accessible zones. In addition, this would complement another geosite that is part of a geotrail (Vernon’s tétines and Baumaticou waterfall), that presents spectacular erosional features called “tétines” and that also occurs in Triassic sandstones.

Overall, from preliminary scientific investigations to inauguration, Le Sartre geosite illustrates perfectly the transition from an academic-only, discrete scientific study to an



equipped geosite that is now frequently advertised on the internet and in both regional and national media.

### **Conserving ichnological geosites in Ardèche: actions, solutions and challenges**

In France, natural sites rarely benefit from legal protection based on their geological or geomorphological interests, although several initiatives have been taken nationally over the last decades in order to improve that situation (Billet 2002; Egoroff *et al.* 2011, 2014; De Wever *et al.* 2015; Auberger *et al.* 2018). This includes a nation-wide coordinated inventory of remarkable geological sites (*e.g.*, the national inventory of the geological heritage INPG, imposed by the article L.411-5 from the law n°2002-276 of the 27<sup>th</sup> of February 2002 and launched in 2007, De Wever *et al.* 2014), as well as formal protection decrees such as the Prefectural Decree determining the departmental list of the geological sites of interest and the Prefectural Decree of the Protection of the Geotope, APPG, both established in 2015 (*e.g.*, Auberger *et al.* 2018). Within the Geopark perimeter, only a handful of sites currently benefit from the status of “Natural Monuments” and are therefore protected by national law for their geological or landscape value (*e.g.* the Mont Gerbier de Jonc, the Mezenc Massif, or the basaltic flows of the Pont du Diable de Thueyts). Unfortunately, at present, paleontological sites, including track-bearing ones, are not part of this list although they certainly include some requiring most protection.

Beyond legal issues, the main practical challenge for protecting and conserving tracksites in Ardèche are the diversity of land properties and their accessibility. This concerns sites within the Geopark but also the few located outside its formal limits. In the latter case, although access and protection are negotiated on a case-by-case basis, the Geopark label remains an asset in the dialog with land-owners and municipalities. The other, classical issue for tracksites resides in the compromise between extending *vs.* protecting sites of interest, a conundrum that revolves around scientific curiosity and logistical/touristic/protection constraints. These challenges are briefly presented here through the prism of two concepts: site assessment and protection type.

Site assessment typically relies on an evaluation system. This crucial aspect of conservation (Pérez-Lorente 2015) led our team to provide a list of priorities for the study, protection and conservation of ichnosites. Priorities are assessed using criteria such as scientific interest and

novelty, intensity of destructive agents (whether anthropic or not), land property and accessibility. This assessment can also be cross-compared with other patrimonial evaluation criteria proposed by Cendrero (1996), Caro & Pérez-Lorente (1997) and Pérez-Lorente (1998).

The three types of protection summarized by Pérez-Lorente (2015) have also been put into practice for Le Sartre geosite, that will serve as an emblematic example for other ichnological sites within the Geopark. *Legal protection* was ensured by the repurchase of the originally private land by the local municipality of Ucel, thus transferring the site into the public domain. *Physical protection* has been achieved through the setting up of fences, walkways overhanging the track-bearing surface, as well as signs and notice boards that explain the fragility of the site (Fig. 3D–F). No covering structure has been installed so far, although it might prove useful in many instances (Pérez-Lorente 2015). *Maintenance protection* is very limited as no cement nor resin were necessary on the undertracks on the erosion-resistant sandstones and microconglomerates, nor on the fragile true tracks that erosion will reveal naturally (Szewczyk *et al.* 2020). Clearly, these aspects require a specific monitoring and adequate actions in the long run. Human activities (construction, circulation, or vandalism) and natural processes such as meteoric agents, floods, shrubs, and covering by lichens and mosses are amongst the major factors susceptible to deteriorate the fine structures and the aesthetic value of most tracksites in the Geopark, including le Sartre geosite.

In addition to traditional casts, and as is now usual for many tracksites around the world, both preservation and valorization are achieved through systematic 3D modelling using photogrammetry (*e.g.*, Lkebir *et al.* 2020; Szewczyk *et al.* 2020). The resulting numerical models are used for enhancing exhibitions with new digital techniques (*e.g.*, virtual reality) that are very attractive to visitors. Digitizing tracks, trackways or entire sites also contributes significantly to sharing and preserving this ichnological heritage numerically and to promoting its digital scientific outreach. Importantly, this approach not only concerns on-site reptile track and trackways, but also historical ichnological specimens from this area held in various collections nationwide. Taken together, these data will contribute to the emergence of an exhaustive ichnological inventory that will ultimately be made available to the public.

In terms of decision-making, the RNP Monts d’Ardèche-Monts d’Ardèche UNESCO Global Geopark is at the heart of the process and of nearly all the initiatives taken with local authorities. Inspired by ideas shared within the global Geopark network and with local

communities, the Geopark establishes its strategy based on decisions taken in its main internal entities, namely the Council and the Scientific Committee. The latter is composed of a board of national experts of various disciplines that are involved into the study of the local geological heritage.

## **Summary**

The remarkable richness and abundance of Triassic vertebrate traces in Ardèche is an outstanding ichnological heritage in France. This is why an exhaustive inventory of this patrimony, associated with conservation measures, was crucially needed. The excellent dynamics of the ongoing Geopark project is already materialized by Le Sartre, which is the first equipped geosite in France presenting Late Triassic dinosaur tracks to the public. Such a success, achieved within a few years only, results from an exceptional combination of factors and of the notable coordination by the Monts d'Ardèche UNESCO Global Geopark of both local and external actors. But setting up a few geosites with fences or notice boards is not enough. Their long-term maintenance and protection require an endless involvement of all the participants, and the future must be rhythmized by regular educational activities, by field training and academic research projects, and by on-site regular visits and conferences for the public. The designation as a UNESCO Global Geopark clearly marked a turning point from academic-only to coordinated research, conservation and geotouristic initiatives involving local communities.

## **Acknowledgements**

We acknowledge the two reviewers whose comments improved the first version of the manuscript, as well as the Editor-in-Chief Michael J. Benton who improved the style of this contribution. We wish to thank all the local people and volunteers that help us to promote the ichnological patrimony from Ardèche, especially Michel and Véronique Verolet, Roland Fayolle, Suzy Meucci, Laurent Mendras, Maryse Aymes, Georges Naud, and Jean-Daniel Balayn. Suzanne Jiquel is thanked for her decisive help with fossil casts, and the artwork by Pierrick Legobien continues to be admired by all colleagues and visitors. We express our gratitude to the Ucel Municipality for the permission to investigate and promote the geosite of Le Sartre and for making extension works possible. We also acknowledge the financial

support by the European Leader program, the Région Auvergne-Rhône-Alpes, the Département de l'Ardèche and the community of municipalities from the Bassin d'Aubenas. Photogrammetry and 3D modelling were essentially performed in the MorphOptics facilities of the GISMO platform (Biogéosciences laboratory, Dijon, France). This contribution is part of the partnership between the RNP of the Monts d'Ardèche-Monts d'Ardèche UNESCO Global Geopark and the Biogéosciences laboratory (University of Burgundy) for the study of Permian-Triassic trace fossils in Ardèche.

### **Conflict of interest**

The authors declare that they have no competing interests.

### **References**

- Alcalá L, Lockley MG, Cobos A, Mampel L & Royo-Torres R (2016). Evaluating the dinosaur track record: an integrative approach to understanding the regional and global distribution, scientific importance, preservation, and management of tracksites. In Falkingham PL, Marty D, Richter A (Eds.), *Dinosaur Tracks: the Next Steps* (pp. 101-11). Bloomington; Indianapolis: Indiana University Press.
- Auberger E, Gély JP & Merle D (2018). New regulatory tool for the conservation of the geological heritage in France: the Prefectural Decree of the Protection of the Geotope (APPG). Application and feedback in the Yvelines department (Paris basin, Île-de-France). *Bulletin de la Société géologique de France*. 189: 3 <https://hal.sorbonne-universite.fr/hal-01897008>
- Benton MJ (1986). More than one event in the late Triassic mass extinction. *Nature*. 321: 857-861.
- Benton MJ, Bernardi M, Kinsella C (2018). The Carnian Pluvial Episode and the origin of dinosaurs. *Journal of the Geological Society, London*. 175: 1019-1026.
- Bernardi M, Gianolla P, Petti FM, Mietto P, Benton M.J (2018). Dinosaur diversification linked with the Carnian Pluvial Episode. *Nature Communications*. 9, 1499. <https://doi.org/10.1038/s41467-018-03996-1>

- Billet P (2002). La protection du patrimoine géologique, guide juridique. Montpellier : ATEN, Cahiers techniques. 67: 1-148.
- Blanc A (1962). Empreintes de pas sur le grès d'Ailhon (Ardèche). Bulletins Mensuels de la Société Linnéenne de Lyon. 10: 316-317.
- Bourquin S, Poli E, Durand M & Courel L (1995). Stratigraphie des évaporites du Trias français; exemple de séquences de dépôt des séries carniennes et leur cadre morpho-structural. Bulletin de la Société géologique de France. 166(5): 493-505.
- Brusatte SL, Benton MJ, Ruta M, Lloyd GT (2008). The first 50Myr of dinosaur evolution: macroevolutionary pattern and morphological disparity. Biology letters. 4(6): 733-736. <https://doi.org/10.1098/rsbl.2008.0441>
- Brusatte SL, Niedźwiedzki G & Butler RJ (2011). Footprints pull origin and diversification of dinosaur stem-lineage deep into Early Triassic. Proceedings of the Royal Society B: Biological Sciences. 278(1708): 1107-1113. <https://doi.org/10.1098/rspb.2010.1746>
- Caro A & Pérez-Lorente F (1997). Concepto y valoración del patrimonio paleoicnológico de la Rioja. Zubía. 15: 35-38.
- Cendrero A (1996). Propuesta sobre criterios para la clasificación y catalogación del patrimonio geológico. In El patrimonio geológico (pp. 29-38). Madrid: Ministerio de Obras Publicas.
- Cobos A & Alcalá L (2017). Palaeontological heritage as a resource for promoting geotourism in the rural setting: el Castellar (Teruel, Spain). Geoh Heritage. 10: 405-414.
- Courel L, Adloff M-C, Appia C *et al.* (1984). Trias. In Synthèse géologique du Sud-Est de la France, Mémoire BRGM 125 ( pp. 61-118). Orléans: BRGM.
- Courel L & Demathieu G (1963). Les empreintes de pas fossiles dans le Trias de la bordure est et nord-est du Massif Central. Bulletin Scientifique de Bourgogne. 21: 73-96.
- Courel L & Demathieu G (1976). Une ichnofaune reptilienne remarquable dans les grès triasiques de Largentière, Ardèche, France. Palaeontographica. 151: 194-216.
- Courel L & Demathieu G (2000). Une nouvelle ichnoespèce *Coelurosaurichnus grancieri* du Trias supérieur de l'Ardèche, France. Geodiversitas. 22(1): 35-45.

- Courel L, Demathieu G & Gand G (1982). Contribution apportée par l'ichnologie à quelques disciplines de la Géologie. Mémoire de l'Institut des Sciences de la Terre, Université de Dijon. 7: 313-326.
- Courel L, Poli E, Vannier F, Le Strat P, Baud A & Jacquin T (1998). Sequence stratigraphy along a Triassic transect on the western Peritethyan margin in Ardèche (SE France Basin): Correlations with subalpine and germanic realms. In de Graciansky PC, Hardenbol J, Jacquin T, Vail PR (Eds), Mesozoic and Cenozoic Sequence Stratigraphy of European Basins. SEPM Special Publication 60 (pp. 691-700). Society for Sedimentary Geology. <https://doi.org/10.2110/pec.98.02.0691>
- Dal Corso J, Mietto P, Newton RJ, Pancost R.D, Preto N, Roghi G & Wignall PB (2012). Discovery of a major negative  $\delta^{13}\text{C}$  spike in the Carnian (Late Triassic) linked to the eruption of Wrangellia flood basalts. *Geology*. 40: 79-82. <https://doi.org/10.1130/G32473.1>
- Dal Corso J, Gianolla P, Newton RJ, Franceschi M, Roghi G, Caggiati M, Raucsik B, Budai T, Haas J & Preto N (2015). Carbon isotope records reveal synchronicity between carbon cycle perturbation and the “Carnian Pluvial Event” in the Tethys realm (Late Triassic). *Global and Planetary Change*. 127: 79-90.
- Dal Corso J, Gianolla P, Rigo M, Franceschi M, *et al.* (2018). Multiple negative carbon-isotope excursions during the Carnian Pluvial Episode (Late Triassic). *Earth Science Reviews*. 185: 732-750.
- Dal Corso J, Bernardi M, Sun Y, Song H, *et al.* (2020). Extinction and dawn of the modern world in the Carnian (Late Triassic). *Science Advances*. 6(38): eaba0099.
- Demathieu G & Samama JC (1968). Les empreintes de pas fossiles des grès triasiques de la mine de Largentière. *Bulletin Scientifique de Bourgogne*. 348-367.
- De Wever P, Alterio I, Egoroff G, Cornée A, Bobrowsky P, Collin G, *et al.* (2015). Geohéritage, a national inventory in France. *Geohéritage*. 7(3): 205–247. Doi:10.1007/s12371-015-0151-2.
- De Wever P, Egoroff G, Cornée A & Lalanne A (Eds.), (2014). Géopatrimoine en France. Mémoire Hors Série, Société géologique de France. 14: 1-179.
- Egoroff G, Cornée A, De Wever P, Lalanne A, Avoine A, Duranthon F, Graviou P, Cabrol P, Poncet L, Hoblea F (2014). INPG : cadre et organisation. In De Wever P, Egoroff G,

- Cornée A, Lalanne A (Eds.), Géopatrimoine en France ( pp. 83-109). Mémoire Hors Série, Société géologique de France. 14.
- Egoroff G, De Wever P, Cornée A, Monod K (2011). Du Grenelle 1 à la protection du patrimoine géologique. *Géochronique*. 119: 17-19.
- Elmi S, Busnardo R, Clavel B, Camus G, Kieffer G, Berard P, Michëly B (1996). Notice explicative, carte géologique de la France (1/50000), feuille d'Aubenas (865), pp 1-170. BRGM: Orléans.
- Fara E & Gand G (2015). Traces d'histoire et histoires de traces. *Journal du Parc Naturel Régional des Monts d'Ardèche*. 18: 8.
- Fara E, Moreau J-D, Szewczyk L, Gand G, Vennin E, Klee N, Verolet M, Jiquel S, Dubied M, Monna F (2019). Revisiting and exploring Middle-Late Triassic vertebrate tracksites in Ardèche (southern France). 3rd International Conference of Continental Ichnology, Abstract Volume & Field Guide, *Hallesches Jahrbuch für Geowissenschaften*. 46: 28.
- Gand G (1994). Les empreintes animales et végétales du bassin permien de Largentière Ardèche, France. Conséquences stratigraphiques et paléoenvironnementales. *Bulletin de la Société d'Histoire Naturelle d'Autun*. 146: 7-42.
- Gand G & Demathieu G (2005). Les pistes dinosauroïdes du Trias moyen français : interprétation et réévaluation de la nomenclature. *Geobios*. 38: 725-749.
- Gand G, Demathieu G, Grancier M & Sciau J (2005). Les traces dinosauroïdes du Trias supérieur français: discrimination, interprétation et comparaison. *Bulletin de la Société géologique de France*. 176(1): 69-79. <https://doi.org/10.2113/176.1.69>
- Gand G, Demathieu G, Montenat C (2007). Les traces de pas d'Amphibiens, de Dinosaures et autres Reptiles du Mésozoïque français : Inventaire et interprétations. *Palaeovertebrata*. 35(1-4): 1-149.
- Hornung T, Krystyn L & Brandner R (2007). Tethys-wide mid-Carnian (Upper Triassic) carbonate productivity crisis: Evidence for the Alpine Reingraben Event from Spiti (Indian Himalaya)? *Journal of Asian Earth Sciences*. 30: 285-302. <https://doi.org/10.1016/j.jseae.2006.10.001>
- Laws E & Scott N (2003). Developing new tourism services: dinosaurs, a new drive tourism resource for remote regions? *Journal of Vacation Marketing*. 9: 368-380.

- Lkebir N, Rolland T, Monna F, Masrouf M, Bouchaou L, Fara E, Navarro, N Wilczek J, Beraaouz EH, Chateau-Smith C, Perez-Lorenté F (2020). Anza palaeoichnological site, Late Cretaceous, Morocco. Part III: comparison between traditional and photogrammetric records. *Journal of African Earth Sciences*. 172: 103985.  
<https://doi.org/10.1016/j.jafrearsci.2020.103985>
- Montenat C (1968). Empreintes de pas de reptiles dans le Trias moyen du plateau du Daüs près d'Aubenas (Ardèche). *Bulletin Scientifique de Bourgogne*. 25: 369-389.
- Pérez-Lorente F (2015). *Dinosaur footprints and trackways of La Rioja*. Bloomington: Indiana University Press.
- Pérez-Lorente F (1998). Restauración de yacimientos con huellas fósiles de dinosaurio. *Estrato*. 8: 100-103.
- Poli E (1998). Stratigraphie séquentielle haute-résolution, modèles de dépôt et géométrie 2D-3D des séquences triasiques de la marge théthysienne ardéchoise. Orléans: BRGM.
- Poli E, Courel L, Lopez M & Perrissol M (1994). Bordure cévenole de Valence à Lodève: Groupe Français du Trias (pp 59-78). Dijon & Orléans : Université de Bourgogne et BRGM.
- Razin P, Bonijoly D, Le Strat P, Courel L, Poli E, Dromart G & Elmi S (1996). Stratigraphic record of the structural evolution of the western extensional margin of the Subalpine Basin during the Triassic and Jurassic, Ardèche, France. *Marine and Petroleum Geology*. 13: 625-652. [https://doi.org/10.1016/0264-8172\(96\)00032-3](https://doi.org/10.1016/0264-8172(96)00032-3)
- Rouire J, Chiron J-C, Camus G, Kieffer G, Masse J-P, Mergoïl J, Monjuvent G & Rousset C (1980). Notice explicative, carte géologique de la France (1/250000), BRGM, feuille de Valence. (34): 1-106.
- Saint Martin M (2009). Carte géologique harmonisée du département de l'Ardèche ( pp 1-423) BRGM/RP-57097-FR.
- Simms MJ & Ruffell AH (1989). Synchronicity of climatic change and extinctions in the Late Triassic. *Geology*. 17: 265-268.
- Sun YD, Wignall PB, Joachimski MM, Bond DPG, Grasby SE, Lai XL, Wang LN, Zhang ZT & Sun S (2016). Climate warming, euxinia and carbon isotope perturbations during the Carnian (Triassic) Crisis in South China. *Earth & Planetary Science Letters*. 444: 88-100.  
<https://doi.org/10.1016/j.epsl.2016.03.037>
- Szewczyk L, Vennin E, Moreau J-D, Gand G, Verolet M, Klee N & Fara E (2020). Tracking dinosaurs in coarse-grained sediments from the Upper Triassic of Ardèche (southeastern France). *Palaios*. 35(11): 447-460. <https://doi.org/10.2110/palo.2020.025>



## Figure captions

Figure 1. Location of the main Permian-Triassic tracksites inventoried within the Monts d’Ardèche UNESCO Global Geopark and its immediate surroundings. Note the long and narrow strip of Middle-Upper Triassic continental detrital sedimentary rocks that yield numerous archosaur tracks and trackways. Le Sartre, which is the first equipped ichnological geosite within the Geopark, is also indicated on the map. Selected and simplified geological contours are from Saint Martin (2009).

Figure 2. Illustration of the main track-bearing sedimentological units in the Monts d’Ardèche UNESCO Global Geopark. A: Outcrop of the Upper Triassic “Formation Bariolée d’Ucel” at Le Sartre geosite, near Aubenas. The cliff, on the top of which is located the track-bearing surface, is about 10 m high. B: Example of a typical *Grallator*-like footprint found at Le Sartre geosite and preserved in coarse-grained sandstone (see also Szewczyk *et al.* 2020). Scale bar is 5 cm long. C: Outcrop of the Middle Triassic “Grès du Roubreau” at Daüs, west of Ailhon. The outcrop on the right side of the pathway is 2-3m wide. D: Chirotherioid tracks of pseudosuchian reptiles from Daüs and currently held in the Musée de Privas, Ardèche. Scale bar is 5 cm long.

Figure 3. Installation of Le Sartre geosite. A) Aspect of the site before April 2019, as viewed from the South-West. B) Extension works carried out in April 2019 with the help of the Ucel Municipality, academics and local volunteers. The participation of scientists contributed to optimize the operation by checking track-bearing surfaces during excavation. C) Inauguration of Le Sartre geosite the 1<sup>st</sup> of October 2020. This event gathered all the actors who are contributing to the long-term project of promoting the ichnological patrimony of Ardèche. Photo courtesy of Philippe Lemery. D) Aspect of Le Sartre today, as viewed from the West. E: Visual targeting tubes allowing young and adult visitors to spot well-preserved fossil

footprints. F: Richly illustrated explanatory boards associated with touchable 3D replicas of representative footprints.

Figure 4. Diversity of actors actively contributing to the awareness of local people about the nature, richness and patrimonial value of their geological heritage. A: Preliminary scientific investigations and preparation of casts in August 2016 by a team composed of local inhabitants, master students and academics. B: Team involving local volunteers, members of the RNP des Monts d'Ardèche and academics during one of the numerous but necessary soft cleaning sessions of the track-bearing surface. C–D. Academics, members of the RNP des Monts d'Ardèche and teachers instill the notion of a universal, shared and valuable geological heritage to local people and tourists during the numerous formal and informal visits of Triassic tracksites in the Monts d'Ardèche UNESCO Global Geopark.

FIGURE 1

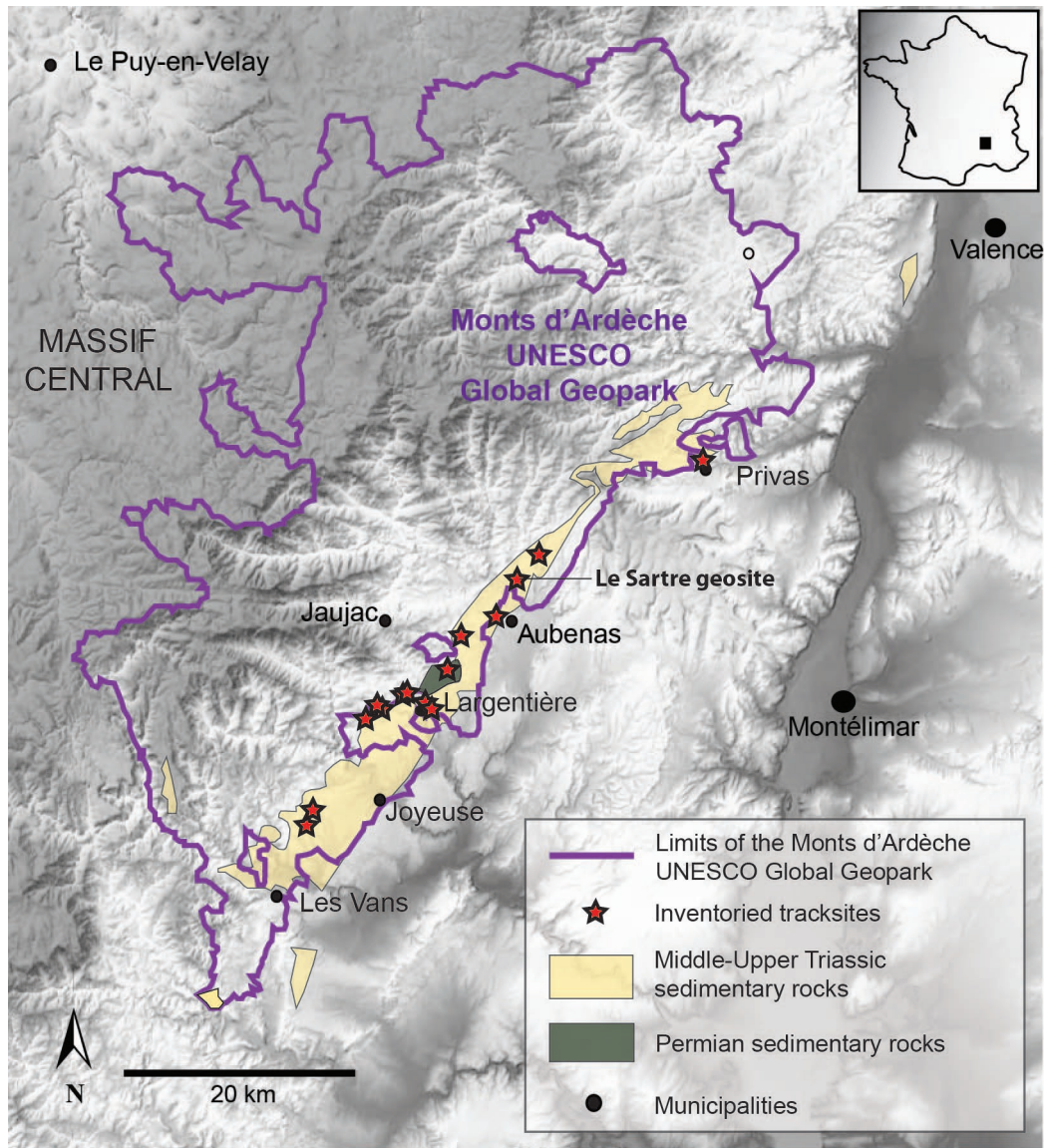


FIGURE 2

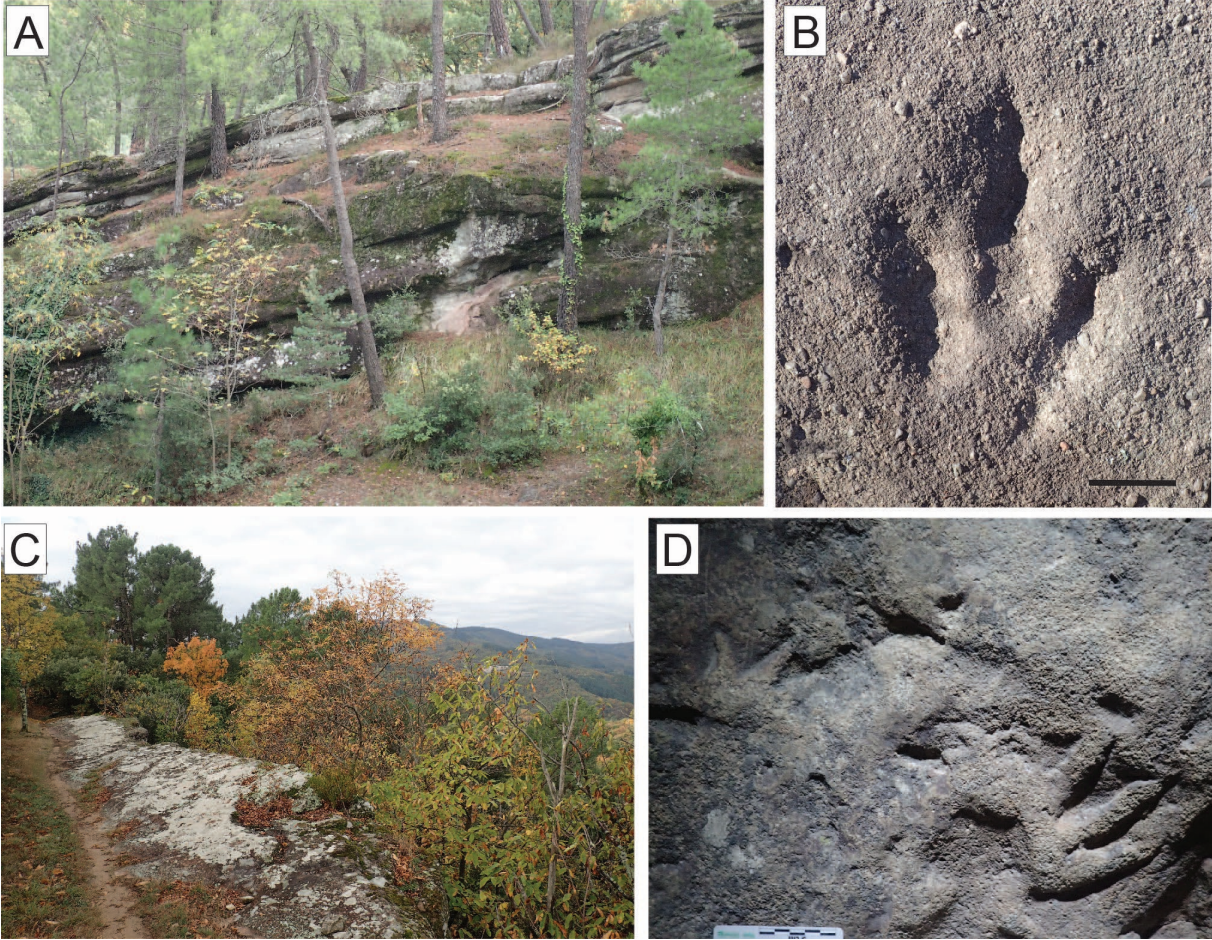


FIGURE 3



FIGURE 4

