



HAL
open science

Adaptive data-driven models to best predict the likelihood of live birth as the IVF cycle moves on and for each embryo transfer

Véronika Grzegorzcyk-Martin, Julie Roset, Pierre Di Pizio, Thomas Fréour, Paul Barrière, Jean Luc Pouly, Michael Grynberg, Isabelle Parneix, Catherine Avril, Joe Pacheco, et al.

► **To cite this version:**

Véronika Grzegorzcyk-Martin, Julie Roset, Pierre Di Pizio, Thomas Fréour, Paul Barrière, et al.. Adaptive data-driven models to best predict the likelihood of live birth as the IVF cycle moves on and for each embryo transfer. *Journal of Assisted Reproduction and Genetics*, 2022, 39 (8), pp.1937 - 1949. 10.1007/s10815-022-02547-4 . hal-03832342

HAL Id: hal-03832342

<https://hal.science/hal-03832342>

Submitted on 27 Oct 2022

HAL is a multi-disciplinary open access archive for the deposit and dissemination of scientific research documents, whether they are published or not. The documents may come from teaching and research institutions in France or abroad, or from public or private research centers.

L'archive ouverte pluridisciplinaire **HAL**, est destinée au dépôt et à la diffusion de documents scientifiques de niveau recherche, publiés ou non, émanant des établissements d'enseignement et de recherche français ou étrangers, des laboratoires publics ou privés.



Adaptive data-driven models to best predict the likelihood of live birth as the IVF cycle moves on and for each embryo transfer

Véronika Grzegorzczuk-Martin¹ · Julie Roset¹ · Pierre Di Pizio¹ · Thomas Fréour^{2,3} · Paul Barrière^{2,3} · Jean Luc Pouly⁴ · Michael Grynberg^{5,6,7,8,9} · Isabelle Parneix¹⁰ · Catherine Avril¹ · Joe Pacheco¹¹ · Tomasz M. Grzegorzczuk¹¹

Received: 28 February 2022 / Accepted: 9 June 2022 / Published online: 29 June 2022
© The Author(s) 2022

Abstract

Purpose To dynamically assess the evolution of live birth predictive factors' impact throughout the in vitro fertilization (IVF) process, for each fresh and subsequent frozen embryo transfers.

Methods In this multicentric study, data from 13,574 fresh IVF cycles and 6,770 subsequent frozen embryo transfers were retrospectively analyzed. Fifty-seven descriptive parameters were included and split into four categories: (1) demographic (couple's baseline characteristics), (2) ovarian stimulation, (3) laboratory data, and (4) embryo transfer (fresh and frozen). All these parameters were used to develop four successive predictive models with the outcome being a live birth event.

Results Eight parameters were predictive of live birth in the first step after the first consultation, 9 in the second step after the stimulation, 11 in the third step with laboratory data, and 13 in the 4th step at the transfer stage. The predictive performance of the models increased at each step. Certain parameters remained predictive in all 4 models while others were predictive only in the first models and no longer in the subsequent ones when including new parameters. Moreover, some parameters were predictive in fresh transfers but not in frozen transfers.

Conclusion This work evaluates the chances of live birth for each embryo transfer individually and not the cumulative outcome after multiple IVF attempts. The different predictive models allow to determine which parameters should be taken into account or not at each step of an IVF cycle, and especially at the time of each embryo transfer, fresh or frozen.

Keywords In vitro fertilization · Predictive factors · Live birth · Predictive models

✉ Véronika Grzegorzczuk-Martin
veronika_gre@yahoo.fr

¹ Department of Assisted Reproductive Technology and Fertility Preservation, Clinique Mathilde, Service Assistance Médicale à la Procréation, 76100 Rouen, France

² Nantes Université, Inserm, Centre de Recherche en Transplantation Et Immunologie, UMR 1064, ITUN, 44000 Nantes, France

³ Service de Médecine Et Biologie du Développement Et de La Reproduction, Nantes, France

⁴ Centre de Procréation Médicalement, Assistée Hôpital Estaing-CHU de Clermont Ferrand, 63003 Clermont Ferrand, France

⁵ Department of Reproductive Medicine and Fertility Preservation, Hôpital Antoine Bécclère, Hôpitaux

Universitaires Paris Sud, Assistance Publique-Hôpitaux de Paris, 92140 Clamart, France

⁶ Department of Reproductive Medicine & Fertility Preservation, Hôpital Jean Verdier, 93140 Bondy, France

⁷ Université Paris-Sud, Université Paris Saclay, Le Kremlin Bicêtre 94276, France

⁸ Department of Cytogenetic and Reproductive Biology, Hôpital Jean Verdier, 93140 Bondy, France

⁹ Unité Inserm U1133, Université Paris-Diderot, 75013 Paris, France

¹⁰ Centre AMP Eurofins Fertilité Jean Villar, Bordeaux, France

¹¹ Teranalytics, Artificial Intelligence Division, Newton, USA

Introduction

Numerous parameters are well known to be prognostic factors of IVF success. Over the last two decades, predictive models have been proposed in order to take into account these parameters in their whole. These methodologies have become increasingly more interesting due to (i) the ever-larger amount of data available and (ii) the ever-increasing computational power allowing extraction of valuable information from these large amounts of data. Early works focused on predicting the outcome of IVF treatments in fresh cycles, starting with the direct identification of influencing factors [1] to the simultaneous inclusion of a range of anamnestic couple characteristics [2], every time providing more accurate assessments of the outcomes. Subsequently, predictive models estimated individualized cumulative chances of a first live birth over multiple complete cycles of IVF involving fresh and subsequent embryo transfers [3, 4]. This last model provided live birth predictions after 6 IVF cycles at two time points: the first before undergoing IVF with integration of patient characteristics before treatment; and the second, after completion of the first complete IVF cycle, including fresh and subsequent frozen embryo transfers. More recently, a model was proposed where the probability of live birth after the oocyte retrieval was readjusted with the addition of two parameters, the number of oocytes retrieved and the number of embryos obtained, thereby updating the live birth probability during IVF [5].

The aim of this work is to investigate which and at which stage such potentially predictive factors do in fact help in the estimation of the live birth probability (LBP) at each fresh and frozen cycle transfer. In order to achieve this goal, we created a four-step process to select the statistically significant predictive parameters of the LBP at each step of the IVF procedure.

Materials and methods

Our approach, although intimately driven by clinical practice, is deeply grounded in data and analytical process via machine learning techniques. Hence, our first step was to gather and curate a database of patients with the entire IVF process of each couple.

Data

Anonymous data from 5 IVF French centers (3 public and 2 private), including in vitro fertilization (IVF) and intracytoplasmic sperm injection (ICSI) with fresh and subsequent frozen embryo transfers (FET), were retrospectively

extracted from January 2014 to December 2017. Cycles with no oocytes retrieved or no embryos obtained were also included. Frozen embryo transfers for which the originated IVF/ICSI cycles were not available were excluded. The rank parameter kept track of the cycle number for each couple, allowing us to properly associate cycles to each returning couple. Donor cycles (oocytes or sperm) and oocytes or embryos cryopreservation cycles were not included.

Data extracted in each participating center are listed in Table 1. An exhaustive phase of data cleansing was performed in order to ensure (i) data uniformity between the 5 centers, (ii) conventions matching, (iii) proper treatment of missing data, and (iv) further manual verifications as necessary. Parameters with more than 10% missing values were removed from the dataset and the “mice” R package was used to impute the remaining missing values, assuming that the missing data were missing at random. Multicollinearity was checked at this step: before running any model, we removed parameters that were strongly correlated (we chose a threshold of 0.8), keeping only one of them. The choice of which variable to keep was driven by the AUC (when there was a measurable impact) and by expertise (when there was not).

A particular attention was given to homogenize embryo quality grading between participating centers. For simplicity sake, embryos at the cleavage stage were classified into 4 categories. Category A comprised embryos with typical blastomere numbers and less than 10% fragmentation; category B embryos included typical blastomere numbers and less than 30% fragmentation; category C embryos included atypical blastomere numbers and/or between 30 and 50% fragmentation; and category D embryos had more than 50% fragmentation and/or multi-nucleation. For blastocyst grading, the quality assessment was based on Gardner’s classification [6, 7]. Blastocysts were classified into two groups: (1) “good quality” blastocysts (from B3 to B6 with at least one score greater than or equal to “B” for inner cell mass (ICM) and/or trophectoderm) and (2) all other blastocysts (“poor quality” group).

In the dataset, all the numerical parameters could be treated as such, but in some cases, we chose to create categories: age (18–24.9, 25–29.9, 30–34.9, 35–36.9, 37–39.9, ≥ 40 years); BMI (< 25 , 25–29.9, 30–34.9, ≥ 35 kg/m²); antimüllerian hormone, AMH, (< 1 , 1–1.5, 1.51–2.5, 2.51–5, ≥ 5.1 ng/ml); antral follicle count, AFC, (≤ 5 , 6–10, 11–15, > 15); initial gonadotrophin dose (≤ 150 , 151–225, 226–300, > 300 UI per day); and endometrial thickness (< 7 , 7–10, > 10 mm). This facilitates the clinical interpretation of the results by aligning them with common practice in the literature.

The end-point chosen to build the predictive models was a live birth event. Data from all 5 centers were subsequently combined to yield a single, anonymized, and reliable

Table 1 Fifty-seven parameters included in the 4 steps of the IVF process for the development of 4 predictive models

Step 1	Demographic and clinical baseline characteristics: 13 parameters	
	Age (years) /woman, man	
	BMI (kg/m2)/ woman, man	
	Smoking status (yes/no) / woman, man	
	Infertility duration (years) , Infertility cause (uterine, tubal, endometriosis, male, unexplained)	
	Uterine abnormality (malformation, myomas, synechias)	
	Tubal status , ovulatory status	
	Endometriosis (yes/no)	
	Previous couple's pregnancies and/or children	
	First lab and sonography assessments: 8 parameters	
Anti Mullerian Hormone AMH (ng/ml), Basal FSH (UI/L), LH(UI/L), testosterone (ng/ml)		
Antral Follicle Count AFC (Day3 ultrasonography)		
Sperm characteristic: concentration, motility, morphology		
Ovarian stimulation : 15 parameters		
Step 2	ART Technique: IVF or ICSI, Difficulty of the technique	
	Protocol (agonist/antagonist/others)	
	Initial and Total gonadotrophin dose (UI/day)	
	Number of stimulation days	
Hormonal assessments during the stimulation : At Day 1, 6 and Trigger day (Estradiol, LH and progesterone)		
Results after the oocyte retrieval: 11 parameters		
Step 3	Number of oocytes retrieved, number of mature oocytes	
	Number of embryos obtained	
	Total number of cleavage stage embryos obtained at day 2 or day 3 after the oocyte retrieval	
	Number of cleavage stage embryos obtained for each embryo quality category : A, B, C, D	
	Total number of blastocysts obtained at day 5 or day 6 after the oocyte retrieval	
Number of blastocysts obtained with respect to blastocyst quality: good or poor quality		
Embryo transfer: 10 parameters		
Step 4	Transfer rank	
	Protocol if FET (hormonal preparation, ovarian stimulation, natural cycle)	
	Endometrial thickness on the day of progesterone start (mm)	
	Embryo transfer stage (cleavage or blastocyst)	
	Number of cleavage stage embryos transferred for each embryo quality category : A, B, C, D	
Number of blastocysts transferred with respect to blastocyst quality: good or poor quality		

database where FET were connected to their corresponding IVF or ICSI.

Creation of the 4 steps of the IVF process

The database was built to include all the parameters available from the entire IVF process of each patient, from their first infertility consultation to the final embryo transfer (57 parameters in total). This longitudinality of data was divided into four categories, corresponding to the four steps of the IVF process, subsequently corresponding to four iterations of our predictive model (Table 1):

1. Demographic: at the first couple consultation, demographic parameters as well as the first clinical and bio-

logical data were collected (1st step) allowing the development of the first predictive model (model 1). Tubal indication in this study included couples for whom a tubal issue was the main problem: uni- or bilateral salpingectomy. Hydrosalpinx were treated surgically prior to IVF process. Cycles with no oocytes or embryos obtained were included at this step.

2. Stimulation: the patients then underwent an ovarian stimulation and corresponding parameters were recorded (2nd step), allowing the development of the second predictive model (model 2). Similarly, cycles with no oocytes or embryos obtained were included.

3. Laboratory: the corresponding parameters were collected after the oocyte retrieval, such as the number of oocytes as well as number and quality of embryos

obtained (3rd step), allowing the development of the third predictive model (model 3). Cycles with no oocytes or embryos obtained were excluded at this step.

4. Transfer: finally, for patients achieving an embryo transfer, parameters collected at the embryo transfer step (4th step) allowed the development of the fourth predictive model (model 4). Cycles with no oocytes or embryos obtained were excluded.

The predictive power of the different parameters on live birth probability was calculated at each of these 4 IVF steps. Couples failing to reach a step were no longer included in the subsequent models.

For the subsequent FET, data from steps 1, 2, and 3 were extracted from the originated IVF or ICSI cycles, then the transfer parameters specific to the frozen cycles were added, which allowed the prediction of live birth at each FET (model 4 for FET).

Multivariate model creation and validation: statistical analysis

The development of the four models followed the recommended TRIPOD checklist for both the methods and the results [8]. LBP was estimated at each IVF step by implementing four generalized logistic regression multivariate models in R (a univariate analysis was also performed for completeness, although the results are not reported here since they are superseded by the multivariate ones). The data were split into training and testing sets over multiple folds. Within each training fold, the models were created using a second fivefold partition and backward selection with cross-validation at each iteration. At the start of the process, all the parameters of the selected category were included, and eventually, only the most predictive ones were selected in the final models. Finally, these models were evaluated over the testing folds, and the performance of the median model is reported here.

The four models resulting from this process were evaluated for their predictive power via the receiver operating characteristic (ROC) curves and associated area under the curves (AUC, or C-statistics). The results presented subsequently include calibration plots, all the adjusted odd ratios of the parameters that survived our selection process (aOR), their 95% confidence intervals (CI), the corresponding ROC curves and associated AUC, and p -value for each predictive factor. A $p < 0.05$ was considered to be statistically significant. Note that an aOR equal to one indicates that the corresponding level is the reference in our model.

Calibration plots were created for all four models, summarized in Fig. 1, showing a good agreement between the observed and predicted individual live birth probabilities. The calibration plots were created by splitting the

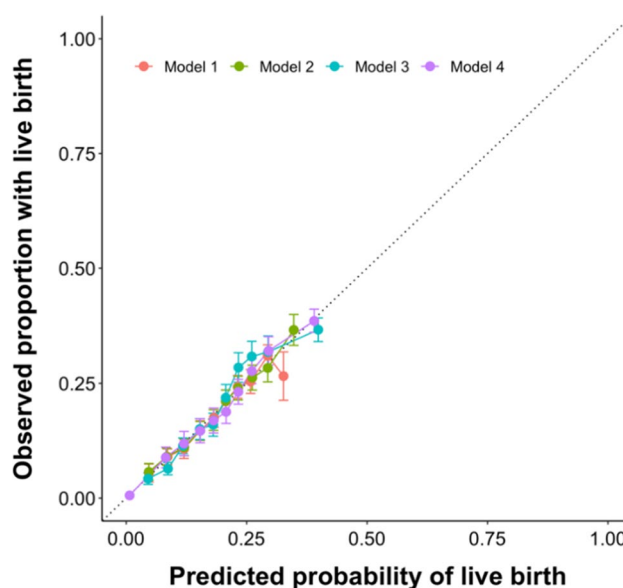


Fig. 1 Calibration plots showing the good agreement between the predicted live birth probability and the computed one within each corresponding decile

population into deciles and computing the average probability of life birth within each population (Fig. 1).

Ethical approval

Before undergoing an IVF procedure, patients sign a written consent form allowing anonymous data to be used for retrospective studies. Only patients having given their written consent were included in our study.

The study was approved by our Institutional Review Board (IRB) on the 13th of September 2018.

Results

A total of 13,574 fresh and 6770 frozen cycles are included in our study, from 8684 couples. The general characteristics of the population provided by the 5 IVF centers are described in Table 2.

The global results concerning pregnancy and live birth rates of the studied population are shown in Table 3. In fresh transfers, the overall pregnancy and live birth rates per transfer were 31.7% and 23.2%, respectively. For frozen embryo transfers, pregnancy and live birth rates per transfer were 27.5% and 18.9%, respectively. These results are comparable to those of the French National Registry during the same period [9].

Table 2 General characteristics and laboratory parameters of the studied population

Number of cycles	13574 Fresh transfers 6770 Frozen transfers
Mean Age of women in years (min-max)	34.4 (18.3-45.5)
Infertility Type (%)	
Unexplained	26.5
Tubal	8.8
Male	44.5
Endometriosis	4.5
Ovulatory	15.5
Mean infertility duration in years (min-max)	4.94 (0.5 -12)
ART Technique (%)	
IVF	47
ICSI	53
Protocol (%)	
Antagonist (%)	79
Others (%)	21
Mean number of mature oocytes retrieved (min-max)	8 (1-52)
Mean number of embryos obtained (min-max)	5.9 (1-47)
Mean number of cleavage stage embryos transferred	1.46
Mean Number of blastocysts transferred	1.13
Mean transfer rank (min-max)	3 (1-16)

Table 3 Clinical outcomes in fresh and frozen cycles

	FRESH CYCLES	FROZEN CYCLES
	N=13574	N=6770
Pregnancy rate per cycle (%)	26.3	26.7
Pregnancy rate per transfer (%)	31.7	27.5
Miscarriage rate (%)	24.0	29.2
Live birth rate per cycle (%)	19.3	18.4
Live birth rate per transfer (%)	23.2	18.9
Twin pregnancy rate (%)*	13.4	5.4
Single embryo transfers (%)	53	74
Double embryo transfer (%)	46	24
Transfer of more than 2 embryos (%)	1	2

*Twin pregnancy rate was calculated dividing the number of twin pregnancies by the total number of pregnancies

Predictive parameters of live birth at each step of the IVF process: fresh transfers

The multivariate odd ratios for all the models and their confidence intervals are presented individually for each model in Tables 4, 5, 6, and 7. Table 8 summarizes the results from all four models and allows the comparison between each model, identifying how the predictive impact of each significant parameter evolves throughout the IVF process.

Model 1 (Table 4) At step 1, after the first consultation, the demographic and the first clinical and biological parameters were used to create model 1. Table 4 shows that 8 parameters were statistically predictive of LB. The odds of live birth decreased with increasing age and woman’s BMI. The

ovarian reserve markers predicted lower chances of live birth for women with poor AMH and AFC at this first step. Longer infertility duration also indicated poorer prognosis. Conversely, a history of previous pregnancy in the couple was a good predictor of success (OR = 2.58, 95% CI 1.55–4.31). Aetiology of infertility played a role with lower results for tubal disease (OR 0.70, 95% CI 0.63–0.78), ovulatory disorder (aOR 0.81, 95% CI 0.71–0.94), and endometriosis (OR 0.74, 95% CI 0.62–0.90), as well as the presence of a uterine abnormality (OR 0.59, 95% CI 0.42–0.81).

Model 2 (Table 5) At the second step, ovarian stimulation parameters were added to the demographic ones in order to create model 2. Nine parameters were predictive at this step. Age, BMI, AFC, previous couple’s pregnancy, uterine

Table 4 Adjusted odd ratios (aOR) and their confidence intervals (CI) for model 1 statistically significant demographic and initial clinical and biological parameters to predict live birth at step 1

Parameters	Model 1			
	aOR	CI 5%	CI 95%	
Demographic	Woman's age < 35 (years)	ref		
	Woman's age 35-37	0.78	0.69	0.88
	Woman's age 37-40	0.57	0.50	0.64
	Woman's age >40	0.27	0.23	0.33
	Woman's BMI < 25 (kg/m ²)	ref		
	Woman's BMI 25-30	0.83	0.74	0.94
	Woman's BMI >30	0.59	0.44	0.79
	AMH <1	0.83	0.73	0.95
	AMH 1-1.5	0.79	0.66	0.95
	AMH 2-5 (ng/ml)	ref		
	AMH >5	1.24	1.11	1.38
	AFC <5	0.67	0.54	0.84
	AFC 5-10	ref		
	AFC 10-15	1.29	1.15	1.45
	AFC >15	1.35	1.21	1.51
	Infertility duration < 1,5 years	ref		
	Infertility duration 1.5-3 years	0.89	0.80	0.98
	previous couple's pregnancy	2.58	1.55	4.31
	Etiology-Idiopathic	ref		
	Etiology-Endometriosis	0.74	0.62	0.90
	Etiology-Ovulatory disorder	0.81	0.71	0.94
	Etiology-Tubal factor	0.70	0.63	0.78
	Uterine abnormalities	0.59	0.43	0.81
Uterine fibroids	0.59	0.42	0.83	

abnormality, and tubal disease remained predictive. The use of high gonadotrophin doses (> 300 UI/day) and the need to increase the daily dose displayed a negative impact on LBP in fresh transfers. The highest the LH was on the trigger day, the lower was the live birth probability.

Model 3 (Table 6) At the third step, laboratory parameters were added, making a list of 19 possible predictors; 11 remained predictive in this 3rd model, as shown in Table 6. The population with no embryos (1303 cycles) was removed from this model since this information becomes available at this stage. Age, BMI, previous couple's pregnancy, uterine and tubal abnormality, high gonadotrophin dose, and LH level on triggering day remained continuously predictive for fresh embryo transfers. Progesterone levels on day 6 of the stimulation appeared significant at this step. The number of oocytes, the number and quality of the embryos obtained, and the embryo stage (cleavage or blastocyst) were new predictive parameters of live birth.

Model 4 (Table 7) Finally, at the fourth and last step for fresh embryo transfers, all the parameters available were

considered as possible predictors, but only 13 ended up being selected by our process as statistically significant in predicting LBP, yielding model 4. The population with no transferred embryos (1448 cycles) was removed from this model since this information becomes available at this stage. Age, BMI, male factor, uterine abnormality, high gonadotrophin dose, day 6 progesterone, number, quality, and stage of the embryos obtained remained predictive. Most of the transfer parameters also remained predictive: endometrial thickness on the day of progesterone start, quality and stage of the embryo transferred, and transfer rank. The number of embryos transferred appeared significant only for cleavage stage embryos but not for blastocysts. This is explained by the specific clinical practice of all the centers involved in the study, whereby the transfers at the blastocyst stages were almost always single transfers. As a result, the number of blastocysts transferred, almost always 1, ends up having no predictive power and therefore does not appear in our model.

Evolutivity of significant parameters (Table 8) An important implication of our study is that we could go beyond the interpretation of each single model and compare them side

Table 5 Adjusted odd ratios (aOR) and their confidence intervals (CI) of model 2 statistically significant demographic and stimulation parameters to predict live birth at step 2

Parameters		Model 2		
		aOR	CI 5%	CI 95%
Demographic	Woman's age < 35 (years)	ref		
	Woman's age 35-37	0.77	0.68	0.87
	Woman's age 37-40	0.57	0.50	0.64
	Woman's age >40	0.27	0.22	0.32
	Woman's BMI < 25 (kg/m ²)	ref		
	Woman's BMI 25-30	0.85	0.76	0.96
	Woman's BMI >30	0.637	0.48	0.85
	AFC <5	0.55	0.50	0.62
	AFC 5-10	ref		
	AFC 10-15	1.17	1.04	1.31
	AFC >15	1.29	1.15	1.43
	previous couple's pregnancy	2.55	1.50	4.12
	Etiology-Idiopathic	ref		
	Etiology-Tubal factor	0.81	0.72	0.90
Uterine abnormalities	0.61	0.44	0.84	
Uterine fibroids	0.64	0.45	0.90	
Stimulation	Initial gonadotrophine dose ≤ 150 (UI/day)	ref		
	Initial gonadotrophine dose > 300	0.57	0.47	0.67
	dose increase during stimulation	0.87	0.77	0.97
	LH on Trigger day	0.94	0.91	0.96

Table 6 Adjusted odd ratios (aOR) and their confidence intervals (CI) of model 3 statistically significant demographic, stimulation, and laboratory parameters to predict live birth at step 3

Parameters		Model 3		
		aOR	CI 5%	CI 95%
Demographic	Woman's age < 35 (years)	ref		
	Woman's age 35-37	0.82	0.72	0.93
	Woman's age 37-40	0.62	0.54	0.70
	Woman's age >40	0.30	0.25	0.36
	Woman's BMI < 25 (kg/m ²)	ref		
	Woman's BMI 25-30	0.85	0.75	0.96
	Woman's BMI >30	0.72	0.60	0.85
	previous couple's pregnancy	2.58	1.55	4.31
	Etiology_ Idiopathic	ref		
	Etiology-Male factor	1.21	1.10	1.34
	Etiology-Tubal factor	0.84	0.74	0.95
	Uterine abnormalities	0.57	0.41	0.78
	Uterine fibroids	0.64	0.45	0.91
Stimulation	Initial gonadotrophine dose ≤ 150 (UI/day)	ref		
	Initial gonadotrophine dose > 300	0.65	0.54	0.78
	LH on Trigger Day	0.94	0.92	0.97
	Progesterone at Day 6 of stimulation	0.66	0.49	0.88
Laboratory	Number of oocytes retrieved	1.04	1.03	1.05
	Number of embryos quality A obtained	1.21	1.13	1.29
	Number of embryos quality B obtained	1.20	1.16	1.24
	Number of embryos quality C obtained	1.14	1.12	1.16
	Number of embryos quality D obtained	1.06	1.03	1.09
	Number of Blastocysts obtained	1.08	1.04	1.13

Table 7 Adjusted odd ratios (aOR) and their confidence intervals (CI) of model 4 statistically significant demographic, stimulation, and laboratory parameters to predict live birth at step 4

Parameters	Model 4			
	aOR	CI5%	CI95%	
Demographic	Woman's age < 35 (years)	ref		
	Woman's age 35-37	0.79	0.69	0.90
	Woman's age 37-40	0.57	0.50	0.64
	Woman's age >40	0.26	0.22	0.32
	Woman's BMI < 25 (kg/m2)	ref		
	Woman's BMI 25-30	0.85	0.75	0.96
	Woman's BMI >30	0.70	0.58	0.84
	Etiology_Idiopathic	ref		
	Etiology-Male factor	1.29	1.18	1.42
	Uterine abnormalities	0.60	0.43	0.84
Uterine abnormalities	0.64	0.45	0.91	
Stimulation	Initial gonadotrophine dose ≤ 150 (UI/day)	ref		
	Initial gonadotrophine dose 150-225	0.79	0.68	0.93
	Initial gonadotrophine dose 225-300	0.78	0.67	0.91
	Initial gonadotrophine dose > 300	0.52	0.42	0.64
	Progesterone at Day 6 of stimulation	0.66	0.49	0.90
Laboratory	Number of embryos quality A obtained	1.21	1.13	1.29
	Number of embryos quality B obtained	1.09	1.04	1.13
	Number of embryos quality C obtained	1.08	1.06	1.09
	Number of embryos quality D obtained	1.05	1.03	1.08
	Number of Blastocysts obtained	1.15	1.10	1.21
Transfer	Transfer rank	0.93	0.90	0.97
	Endometrial thickness 7-10 mm	ref		
	Endometrial thickness > 10 mm	1.31	1.16	1.48
	Day of transfer D2D3 (Day2 or Day3 after retrieval)	1.00		
	Day of transfer D5D6 (Day5 or Day 6 after retrieval)	5.01	3.80	6.62
	Single embryo transfer	ref	5.77	7.71
	Double embryo transfer	3.61	2.77	4.71
	Number of embryos quality A transferred	3.90	3.05	4.70
	Number of embryos quality B transferred	3.15	2.91	3.69
Number of embryos quality C transferred	2.59	2.08	2.98	

by side to see which parameters remain predictive throughout the IVF cycle, to observe the evolution of their impact, or which parameters appear/disappear in the face of other parameters being available. Table 8 is organized for that purpose, allowing the comparison of each model. Hence, Table 8 reveals that woman's age and BMI show a stable predictive impact on live birth in all four models/steps of the IVF process. Ovarian reserve markers, AMH and AFC, are predictive in the first models, but their predictability disappears as more parameters become known in the successive models. Most causes of infertility are predictive in the early steps of the IVF process but their predictabilities disappear as the IVF process advances. High initial gonadotrophin dose remains negatively correlated with LBP in fresh transfers. Increase in gonadotrophin dose is predictive in model 2 but no longer so in the subsequent models. Lastly, the number of oocytes obtained is a significant predictor in model 3 but not anymore once the number of embryos is known.

Each of the four models was used to compute a corresponding ROC and AUC, summarized in Fig. 2, allowing a direct comparison of the models' predictive power. The first curve (AUC = 0.64) corresponds to model 1, using only demographic parameters (step 1). The second (AUC = 0.65), third (AUC = 0.70), and fourth curves (AUC = 0.74) show an increasing predictive power of the models as additional parameters are being added at each step of the IVF process (Fig. 2).

Predictive parameters of live birth at each step of the IVF process: FET

The same process as presented above was repeated for frozen embryo transfers. Although our population was relatively small, the results obtained were statistically significant. The main difference between fresh and frozen transfers was that the parameters from steps 1, 2, and

Table 8 Adjusted odd ratio (aOR) evolution of the selected parameters for all four models (corresponding confidence intervals are provided in Tables 4, 5, 6, and 7)

Parameters		Model 1 aOR	Model 2 aOR	Model 3 aOR	Model 4 aOR
Demographic	Woman's age < 35 (years)	ref	ref	ref	ref
	Woman's age 35-37	0.78	0.77	0.82	0.79
	Woman's age 37-40	0.57	0.57	0.62	0.57
	Woman's age >40	0.27	0.27	0.30	0.26
	Woman's BMI < 25 (kg/m2)	ref	ref	ref	ref
	Woman's BMI 25-30	0.83	0.85	0.85	0.85
	Woman's BMI >30	0.59	0.64	0.72	0.70
	AMH <1	0.83			
	AMH 1-1,5	0.79			
	AMH 2-5 (ng/ml)	ref			
	AMH >5	1.24			
	AFC <5	0.67	0.55		
	AFC 5-10	ref	1.00		
	AFC 10-15	1.29	1.17		
	AFC >15	1.35	1.29		
	Infertility duration < 1,5 years	ref			
	Infertility duration 1.5-3 years	0.89			
	previous couple's pregnancy	2.58	2.55	2.58	
	Etiology_I idiopathic	ref			
	Etiology-Endometriosis	0.74			
Etiology-Male factor			1.21	1.29	
Etiology-Ovulatory disorder	0.81				
Etiology-Tubal factor	0.70	0.81	0.84		
Uterine abnormalities	0.59	0.61	0.57	0.60	
Uterine fibroids	0.59	0.64	0.64	0.64	
Stimulation	Initial gonadotrophine dose ≤ 150 (UI/day)		ref	ref	ref
	Initial gonadotrophine dose 150-225				0.79
	Initial gonadotrophine dose 225-300				0.78
	Initial gonadotrophine dose > 300		0.57	0.65	0.52
	dose increase during stimulation		0.87		
	LH on Trigger day		0.94	0.94	
	Progesterone at Day6 of stimulation			0.66	0.66
Laboratory	Number of oocytes retrieved			1.04	
	Number of embryos quality A obtained			1.21	1.10
	Number of embryos quality B obtained			1.20	1.09
	Number of embryos quality C obtained			1.14	1.08
	Number of embryos quality D obtained			1.06	1.05
	Number of Blastocysts obtained			1.08	1.15
Transfer	Transfer rank				0.93
	Endometrial thickness 7-10 mm				ref
	Endometrial thickness > 10 mm				1.31
	Day of transfer D2D3 (Day2 or Day3 after retrieval)				ref
	Day of transfer D5D6 (Day5 or Day6 after retrieval)				5.01
	Single embryo transfer				ref
	Double embryo transfer				3.65
	Number of embryos quality A transferred				3.90
Number of embryos quality B transferred				3.15	
Number of embryos quality C transferred				2.59	

3 were already known at the time of the frozen embryo transfer. Consequently, FET models only spanned steps 3 and 4, yielding only two models instead of four. Table 9 summarizes these results and again, should be read both vertically (interpretation of each model) and horizontally (comparing each model).

Table 9 shows that woman's age at the time of oocyte retrieval, her BMI, infertility duration, uterine abnormality, quality, number, and stage of the embryos obtained remain predictive parameters. Age appears to negatively impact LBP at later years and BMI beyond 30 kg/m². Endometrial thickness, quality, and stage of the embryos transferred are also predictive for FET (Table 9).

Similar to the fresh transfers, the ROC curves show an improvement in the accuracy of the models to predict live birth after a frozen transfer. The first curve (AUC = 0.65) corresponds to the model including data from the first 3 steps of the IVF cycle (demographic, stimulation, and laboratory data). The second curve (AUC = 0.67) corresponds to the model including FET transfer parameters as well (Fig. 3).

Examples of how the models can be used to predict live birth probabilities

As an example of the evolutivity of the models, a 40-year-old woman whose baseline characteristics give her 17.2%

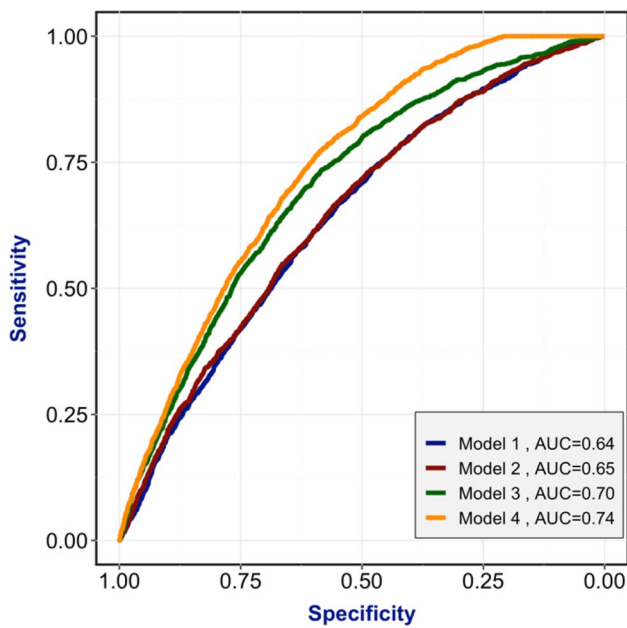


Fig. 2 Receiver operating characteristic curve (ROC) for the 4 models for fresh embryo transfers, with their corresponding area under the curve (AUC)

LBP for her first fresh transfer if her AMH is 2 ng/ml at step 1, has 14.7% recalculated chances if 6 oocytes are retrieved, and 28% if 10 are collected. If that same woman has an AMH of 1.5 ng/ml, her LBP drops to 10% at step 1, but increases to 14.6% and 27% if 6 and 10 oocytes are retrieved, respectively.

As another example, Fig. 4 shows how live birth probabilities can be recalculated by the model at the transfer step according to the number and quality of embryos to be transferred in women of different age categories, but with the

same steps 1, 2, and 3 characteristics (here, for 10 retrieved oocytes).

Discussion

Our work determined the predictive factors of live birth that have to be or not taken into account at each step of an IVF cycle. For this purpose, we investigated the largest number of parameters known today, and isolated only the significant ones. Interestingly, we show that the predictive impact of these parameters is not static but evolves throughout the IVF cycle. Some factors that are predictive of live birth at the first step of the IVF attempt (at the time of the first infertility evaluation) are no longer predictive at later steps due to the integration of other factors. Moreover, some couples may fail at any step of the treatment, so the study population evolves for each model. Additionally, the live birth probabilities were determined for each embryo transfer, fresh or frozen, while most of the published predictive models assessed live birth chances after the first fresh transfer, or provide cumulated probabilities at the end of a complete IVF journey [1, 2, 10–14].

The integration of all couples' available parameters into each model reveals those predictive at each step, and how their predictive impact evolves.

As expected, we observe women's age as being the most determining factor at each step of the IVF process for fresh transfers [15]. Interestingly, however, for FET, the predictive impact of women's age at the time of embryo freezing appears at a more advanced age than for fresh transfers. Receiving at least one FET is conditional upon having at least two good quality embryos (except for the few cases of all freeze processes of only one embryo) and selecting better

Table 9 Models for frozen embryo transfers (FET): adjusted odd ratios (aOR) and their confidence intervals (CI) of statistically significant demographic, stimulation, laboratory, and frozen transfer parameters

Parameters	Model 3 FET			Model 4 FET			
	aOR	CI 5%	CI 95%	aOR	CI 5%	CI 95%	
Demographic	Woman's age < 35 (years)	ref			ref		
	Woman's age 37-40	0.57	0.44	0.75	0.54	0.42	0.71
	Woman's age > 40	0.30	0.20	0.46	0.27	0.18	0.41
	Woman's BMI 25 (kg/m ²)	ref			ref		
	Woman's BMI 30-35 kg/m ²	0.51	0.34	0.77	0.51	0.34	0.76
	Infertility duration ≤ 1,5 years	ref			ref		
	Infertility duration > 5 years	0.64	0.47	0.89	0.59	0.43	0.81
	Infertility duration 3-5 years	0.67	0.50	0.91	0.65	0.49	0.86
	Etiology-Idiopathic	ref					
	Etiology-Ovulatory disorder	0.67	0.49	0.90			
Laboratory	Previous couple's pregnancy	2.58	1.55	4.31	2.21	1.32	3.70
	Uterine abnormalities	0.30	0.14	0.65	0.31	0.14	0.67
	Number of cleavage stage embryos quality A obtained	1.22	1.11	1.34	1.19	1.06	1.33
	Number of cleavage stage embryos quality B obtained	1.07	1.01	1.13			
Transfer	Number of cleavage stage embryos quality C obtained	1.03	1.01	1.06	1.03	1.01	1.06
	Nb of blastocysts obtained	1.22	1.15	1.29	1.15	1.07	1.23
	Freezing at cleavage stage				ref		
	Freezing at blastocyst stage				2.80	1.89	4.14
	Number of cleavage stage embryos quality A transferred				1.98	1.32	2.98
Number of cleavage stage embryos quality B transferred				1.97	1.57	2.48	
Number of cleavage stage embryos quality C transferred				1.56	1.20	2.01	

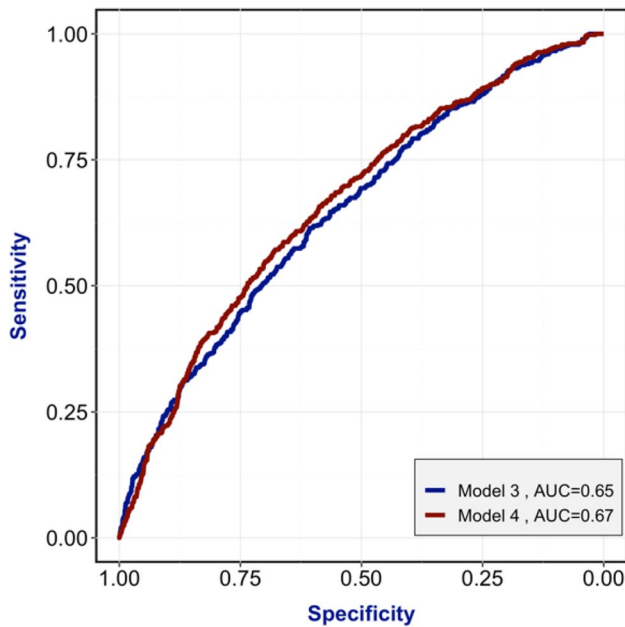


Fig. 3 Receiver operating characteristic curve (ROC) for the 2 models for frozen embryo transfers, with their corresponding area under the curve (AUC)

prognosis patients, possibly explaining the delayed impact of age on live birth in FET.

The results also show a stable negative impact of female obesity on the LBP for fresh transfers. This effect on IVF results is well documented, probably due to an impaired endometrial receptivity [16–19]. However, for frozen embryo transfers, only BMIs beyond 30 kg/m² impact chances of live birth in our study. The literature regarding this subject is still conflicting: some authors published lower results in FET in a freeze all policy in overweight women whereas a recent study found similar live birth rates after

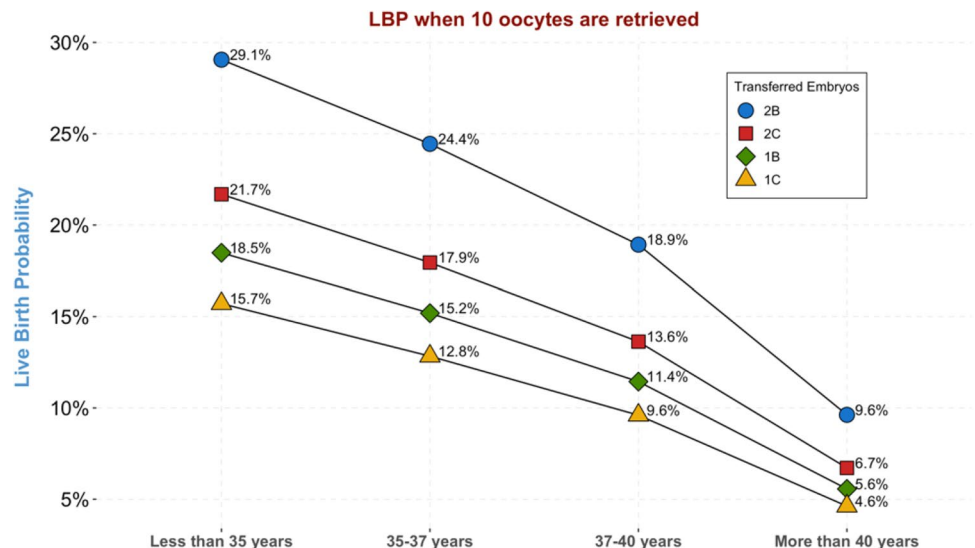
frozen blastocyst transfers for obese patients as compared to normal weight patients [20, 21].

In FET, we observe that female age and BMI have the strongest impact when pushed to their higher ranges, older or obese women. We hypothesize that having cryopreserved embryos translates into better oocyte or embryo quality, pushing back the limit of age and BMI where these parameters impact live birth. However, future properly designed studies are needed to confirm this hypothesis. In this study, male’s age and BMI did not appear as significant predictive factors.

Our results also show that ovarian reserve markers, AMH and AFC, are predictive of live birth before the number of oocytes is known, but no longer after the oocyte retrieval. AMH is well-known to be strongly associated with ovarian response and oocyte yield [22], but its ability to predict live birth remains conflicting. Indeed, the studies reporting AMH as an independent predictive factor of live birth in fresh and frozen embryo transfers have only found a poor predictive accuracy [23–25], not yielding any additional value on top of age [26]. Our results are in agreement with a recent publication concluding that AMH is a good biomarker for oocyte quantity but not for oocyte quality [27]. Additionally, we show that when the number and quality of the embryos obtained becomes known, the number of oocytes retrieved is no longer predictive of live birth. This confirms the importance of the embryo cohort on chances of live birth for each transfer.

Our results also show a strong impact of the daily and total gonadotrophin doses used for the ovarian stimulation after fresh embryo transfers. Model 3 shows an OR of 0.65 (95% CI 0.54–0.78) for women receiving more than 300 UI/day as compared to those receiving ≤ 150 UI/day. This negative impact has also been demonstrated in more than 650 000 ART cycles with a decreased live birth rate

Fig. 4 An example of step 4 (transfer step) live birth probability prediction with respect to age and number and quality of cleavage stage embryos to transfer in women having 10 retrieved oocytes. Quality B embryos included typical blastomere numbers and less than 30% fragmentation; C embryos included atypical blastomere numbers and/or between 30 and 50% fragmentation



in fresh transfers with increasing total FSH dose [28, 29]. Notably, however, this negative impact was not found in the model for the frozen embryo transfers. These results support the hypothesis of a deleterious effect of high gonadotrophin doses on endometrial receptivity [30]. Increasing FSH doses appears also deleterious while duration of ovarian stimulation did not appear as a significant factor.

Concerning progesterone, a negative effect of high progesterone level on stimulation day 6 in fresh transfers was observed in our models, suggesting a known deleterious effect of premature progesterone elevation on endometrial receptivity [31]. The deleterious effect of high progesterone level on the trigger day has been well documented [32, 33]. We did not observe this negative impact on trigger day because all the patients with a progesterone ≥ 1.5 ng/ml on the hCG day benefit from a freeze all approach in the participating centers.

Recent reviews show that numerous predictive models, most concerning fresh cycles, exist today in reproductive medicine as a counselling tool to inform patients on their chances of live birth [34–36]. However, such adaptive models like ours might also have beneficial purposes for couples. For instance, illustrating the modification in live birth probability associated with changes in lifestyle might help couples initiate weight loss strategies or refrain from smoking. This could be explored in further prospective studies.

Contrary to the first predictive models, the latest tends toward readjusting live birth probabilities at different time points of the IVF process. The last published model aimed to predict cumulative live birth after three complete IVF cycles at two time points: before starting the first IVF cycle and after the first complete IVF cycle, including FET, just before starting the second cycle; the aim of these models is to allow couples to make the most informed decision possible [3–5, 13, 37]. Our work evaluates live birth chances individually for each embryo transfer and not after multiple IVF attempts. The objective is to determine the most predictive parameters that have to be taken into account at each step of the IVF process and for each transfer.

The accuracy of LBP increases with the addition and reintegration of all the numerous available couples' parameters at each step of the IVF process. Additionally, this very highly curated database ensures that all the information used is complete. The main limitation of our work remains the limited number of participating centers and therefore the limited number of cycles included. Our model was developed using IVF data from French centers exclusively. Since the infertile population in France might be slightly different than in other countries (i.e., BMI, ethnicity, smoking status...), our models would benefit from being confirmed by external international validation, which is planned in a future work [38].

The objective of our models is to determine in daily practice the important influencing parameters at different time points, and especially at the time of the embryo transfers.

To conclude, these evolutive models allow the identification of parameters that are predictive or not of live birth and that clinicians could take into account at the different steps of IVF, and for each embryo transfer, fresh or frozen.

Acknowledgements A special thanks to the IVF staff of all 5 participating centers for their implication in this project.

Declarations

Conflict of interest The authors declare no competing interests.

Open Access This article is licensed under a Creative Commons Attribution 4.0 International License, which permits use, sharing, adaptation, distribution and reproduction in any medium or format, as long as you give appropriate credit to the original author(s) and the source, provide a link to the Creative Commons licence, and indicate if changes were made. The images or other third party material in this article are included in the article's Creative Commons licence, unless indicated otherwise in a credit line to the material. If material is not included in the article's Creative Commons licence and your intended use is not permitted by statutory regulation or exceeds the permitted use, you will need to obtain permission directly from the copyright holder. To view a copy of this licence, visit <http://creativecommons.org/licenses/by/4.0/>.

References

1. Templeton A, Morris JK, Parslow W. Factors that affect outcome of in-vitro fertilisation treatment. *Lancet*. 1996;348:1402–6.
2. Nelson SM, Lawlor DA. Predicting live birth, preterm delivery, and low birth weight in infants born from in vitro fertilisation: a prospective study of 144,018 treatment cycles. *PLoS Med*. 2011;8:e1000386.
3. McLernon DJ, te Velde ER, Steyerberg EW, Mol BWJ, Bhattacharya S. Clinical prediction models to inform individualized decision-making in subfertile couples: a stratified medicine approach. *Hum Reprod*. 2014;29:1851–8.
4. McLernon DJ, Raja EA, Toner JP, Baker VL, Doody KJ, Seifer DB, Sparks AE, Wantman E, Lin PC, Bhattacharya S, Van Voorhis BJ. Predicting personalized cumulative live birth following in vitro fertilization. *Fertil Steril*. 2021 Oct 19;S0015-0282(21):02053–7.
5. La Marca A, Capuzzo M, Donno V, Mignini Renzini M, Del Giovane C, D'Amico R, Sunkara SK. The predicted probability of live birth in in vitro fertilization varies during important stages throughout the treatment: analysis of 114,882 first cycles. *J Gynecol Obstet Hum Reprod*. 2021;50(3):101878. <https://doi.org/10.1016/j.jogoh.2020.101878>.
6. Gardner DK, Schoolcraft WB. In vitro culture of human blastocyst. Towards reproductive certainty: infertility and genetics beyond. Carnforth: Parthenon Press; 1999a. p. 377–388.
7. Gardner DK, Schoolcraft WB. Culture and transfer of human blastocysts. *Curr Opin Obstet Gynecol*. 1999b;11:307–11.
8. Collins GS, Reitsma JB, Altman DG, Moons KGM. Transparent reporting of a multivariable prediction model for individual prognosis or diagnosis (TRIPOD): the TRIPOD statement. *BMJ*. 2015;350:g 7594.

9. Agence de la biomédecine 2021; Available from: <https://rams.agence-biomedecine.fr/principaux-chiffres-de-lactivite>.
10. Smeenk JM, Stolwijk AM, Kremer JA, Braat DD. External validation of the Templeton model for predicting success after IVF. *Hum Reprod.* 2000;15:1065–8.
11. Arvis P, Leher P, Guivarc’h-Levêque A. Simple adaptations to the Templeton model for IVF outcome prediction make it current and clinically useful. *Hum Reprod.* 2012;27:2971–8.
12. Luke B, Brown MB, Wantman E, Stern JE, Baker VL, Widra E, Coddington CC, Gibbons WE, Ball GD. A prediction model for live birth and multiple births within the first three cycles of assisted reproductive technology. *Fertil Steril.* 2014;102:744–52.
13. McLernon DJ, Steyerberg EW, Te Velde ER, Lee AJ, Bhattacharya S. Predicting the chances of a live birth after one or more complete cycles of in vitro fertilisation: population based study of linked cycle data from 113 873 women. *BMJ.* 2016;355:i573.
14. Leijdekkers JA, Eijkemans MJC, van Tilborg TC, Oudshoorn SC, McLernon DJ, Bhattacharya S, Mol BWJ, Broekmans FJM, Torrance HL, OPTIMIST group. Predicting the cumulative chance of live birth over multiple complete cycles of in vitro fertilization: an external validation study. *Hum Reprod.* 2018;33:1684–95.
15. Piette C, de Mouzon J, Bachelot A, Spira A. In-vitro fertilization: influence of women’s age on pregnancy rates. *Hum Reprod.* 1990;5:56–9.
16. Maheshwari A, Stofberg L, Bhattacharya S. Effect of overweight and obesity on assisted reproductive technology—a systematic review. *Hum Reprod Update.* 2007;13:433–44.
17. Luke B, Brown MB, Stern JE, Missmer SA, Fujimoto VY, Leach R, SART Writing Group. Female obesity adversely affects assisted reproductive technology (ART) pregnancy and live birth rates. *Hum Reprod.* 2011;26:245–52.
18. Sermondade N, Huberlant S, Bourhis-Lefebvre V, Arbo E, Gallot V, Colombani M, Fréour T. Female obesity is negatively associated with live birth rate following IVF: a systematic review and meta-analysis. *Hum Reprod Update.* 2019;25:439–51.
19. Bellver J, Pellicer A, García-Velasco JA, Ballesteros A, Remohí J, Meseguer M. Obesity reduces uterine receptivity: clinical experience from 9,587 first cycles of ovum donation with normal weight donors. *Fertil Steril.* 2013;100:1050–8.
20. Zhang J, Liu H, Mao X, Chen Q, Fan Y, Xiao Y, Wang Y, Kuang Y. Effect of body mass index on pregnancy outcomes in a freeze-all policy: an analysis of 22,043 first autologous frozen-thawed embryo transfer cycles in China. *BMC Med.* 2019;17:114.
21. Prost E, Reignier A, Leperlier F, Caillet P, Barrière P, Fréour T, Lefebvre T. Female obesity does not impact live birth rate after frozen-thawed blastocyst transfer. *Hum Reprod.* 2020;35:859–65.
22. Broer SL, Dólleman M, van Disseldorp J, Broeze KA, Opmeer BC, Bossuyt PMM, Eijkemans MJC, Mol BW, Broekmans FJM, IPD-EXPORT Study Group. Prediction of an excessive response in in vitro fertilization from patient characteristics and ovarian reserve tests and comparison in subgroups: an individual patient data meta-analysis. *Fertil Steril.* 2013;100:420–429.e7.
23. Iliodromiti S, Kelsey TW, Wu O, Anderson RA, Nelson SM. The predictive accuracy of anti-Müllerian hormone for live birth after assisted conception: a systematic review and meta-analysis of the literature. *Hum Reprod Update.* 2014;20:560–70.
24. Tal R, Tal O, Seifer BJ, Seifer DB. Antimüllerian hormone as predictor of implantation and clinical pregnancy after assisted conception: a systematic review and meta-analysis. *Fertil Steril.* 2015;103:119–130.e3.
25. Tal R, Seifer DB, Wantman E, Baker V, Tal O. Antimüllerian hormone as a predictor of live birth following assisted reproduction: an analysis of 85,062 fresh and thawed cycles from the Society for Assisted Reproductive Technology Clinic Outcome Reporting System database for 2012–2013. *Fertil Steril.* 2018;109:258–65.
26. Hamdine O, Eijkemans MJC, Lentjes EGW, Torrance HL, Macklon NS, Fauser BCJM, Broekmans FJ. Antimüllerian hormone: prediction of cumulative live birth in gonadotropin-releasing hormone antagonist treatment for in vitro fertilization. *Fertil Steril.* 2015;104(4):891–898.e2.
27. Peuranpää P, Hautamäki H, Halttunen-Nieminen M, Hydén-Granskog C, Tiitinen A. Low anti-Müllerian hormone level is not a risk factor for early pregnancy loss in IVF/ICSI treatment. *Hum Reprod.* 2020;35:504–15.
28. Baker VL, Brown MB, Luke B, Smith GW, Ireland JJ. Gonadotropin dose is negatively correlated with live birth rate: analysis of more than 650,000 assisted reproductive technology cycles. *Fertil Steril.* 2015;104(1145–1152):e1–5.
29. van Tilborg TC, Torrance HL, Oudshoorn SC, Eijkemans MJC, Koks CAM, Verhoeve HR, Nap AW, Scheffer GJ, Manger AP, Schoot BC, et al. Individualized versus standard FSH dosing in women starting IVF/ICSI: an RCT. Part 1: the predicted poor responder. *Hum Reprod.* 2017;32:2496–505.
30. Munch EM, Sparks AE, Zimmerman MB, Van Voorhis BJ, Duran EH. High FSH dosing is associated with reduced live birth rate in fresh but not subsequent frozen embryo transfers. *Hum Reprod.* 2017;32:1402–9.
31. Arce J-C, Smitz J. Live-birth rates after HP-hMG stimulation in the long GnRH agonist protocol: association with mid-follicular hCG and progesterone concentrations, but not with LH concentrations. *Gynecol Endocrinol.* 2013;29:46–50.
32. Bosch E, Labarta E, Crespo J, Simón C, Remohí J, Jenkins J, Pellicer A. Circulating progesterone levels and ongoing pregnancy rates in controlled ovarian stimulation cycles for in vitro fertilization: analysis of over 4000 cycles. *Hum Reprod.* 2010;25:2092–100.
33. Venetis CA, Kolibianakis EM, Bosdou JK, Tarlatzis BC. Progesterone elevation and probability of pregnancy after IVF: a systematic review and meta-analysis of over 60 000 cycles. *Hum Reprod Update.* 2013;19:433–57.
34. Vaegter KK, Lalic TG, Olovsson M, Berglund L, Brodin T, Holte J. Which factors are most predictive for live birth after in vitro fertilization and intracytoplasmic sperm injection (IVF/ICSI) treatments? Analysis of 100 prospectively recorded variables in 8,400 IVF/ICSI single-embryo transfers. *Fertil Steril.* 2017;107:641–648.e2.
35. Ratna MB, Bhattacharya S, Abdulrahim B, McLernon DJ. A systematic review of the quality of clinical prediction models in in vitro fertilisation. *Hum Reprod.* 2020;35:100–16.
36. Henderson I, Rimmer MP, Keay SD, Sutcliffe P, Khan KS, Yasmin E, Al Wattar BH. Predicting the outcomes of assisted reproductive technology treatments: a systematic review and quality assessment of prediction models. *F&S Reviews.* 2021;2:1–10.
37. Wilkinson J, Vail A, Roberts SA. Multivariate prediction of mixed, multilevel, sequential outcomes arising from in vitro fertilisation. *Diagn Progn Res.* 2021;5(1):2.
38. Van der Steeg JW, Steures P, Eijkemans MJ, Habbema JD, Hompes PG, Broekmans FJ, van Dessel HJ, Bossuyt PM, van der Veen F, Mol BW; CECERM study group (Collaborative Effort for Clinical Evaluation in Reproductive Medicine). Pregnancy is predictable: a large-scale prospective external validation of the prediction of spontaneous pregnancy in subfertile couples. *Hum Reprod.* 2007;22(2):536–42.