

# 12<sup>th</sup> EASN International Conference on Innovation in Aviation and Space for opening New Horizons

18 October  
to 2022  
21 Barcelona, Spain

Numerical investigation of a high-lift wing-flap configuration involving Active Flow Control to improve aerodynamic performance at high Reynolds number

Y. Hoarau<sup>1</sup>, A. Marouf<sup>1</sup>, H. D. Truong<sup>1</sup>, M. Braza<sup>3</sup>, A. Gehri<sup>2</sup>, D. Charbonnier<sup>2</sup>, J. B. Vos<sup>2</sup>

<sup>1</sup> University of Strasbourg, ICUBE laboratory, Mechanical Department, France  
<sup>2</sup> CFS Engineeing, EPFL, Lausanne, Switzerland  
<sup>3</sup> Institut de Mécanique des Fluides de Toulouse IMFT, Toulouse, France

Professor, head of the mechanics department  
ICUBE laboratory, University of Strasbourg

[hoarau@unistra.fr](mailto:hoarau@unistra.fr)



# Drag Reduction of Tilt Rotor Aircraft using ZNMF

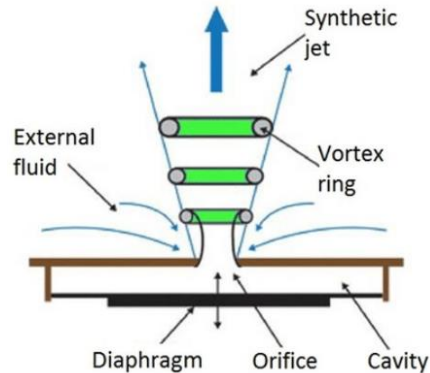
- Introduction
- Numerical methods
  - *NSMB solver and Meshing*
  - *Modeling of ZNMF devices*
- Results
  - *Critical Flow Conditions*
  - *Configuration 1 with horizontal nacelle*
  - *Configuration 2 with tilted nacelle*
  - *Configuration 3 with deflected aileron*
- Conclusions and Perspectives

# Drag Reduction of Tilt Rotor Aircraft using ZNMF

- Introduction
- Numerical methods
  - *NSMB solver and Meshing*
  - *Modeling of ZNMF devices*
- Results
  - *Critical Flow Conditions*
  - *Configuration 1 with horizontal nacelle*
  - *Configuration 2 with tilted nacelle*
  - *Configuration 3 with deflected aileron*
- Conclusions and Perspectives

# Introduction

The overall objective of the AFC4TR project is to investigate the use of Active Flow Control using so called pulsed air blowing devices with Zero Net Mass Flux (ZNMF) to control the vortical flow for the Next Generation Civil Tilt Rotor (NGCTR) aircraft configuration.



*Active Flow Control 4*

*Tilt Rotor aircraft*



**CFS Engineering**

Computational Fluids & Structures Engineering



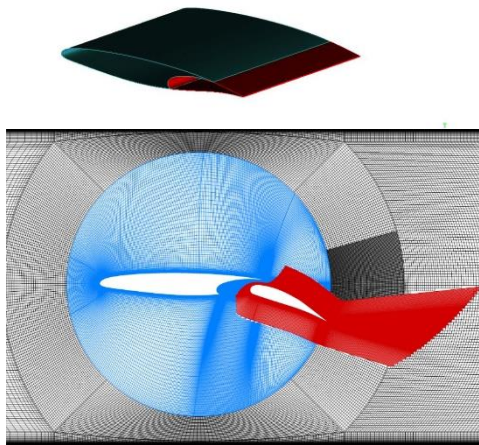
Leonardo Helicopters

# Drag Reduction of Tilt Rotor Aircraft using ZNMF

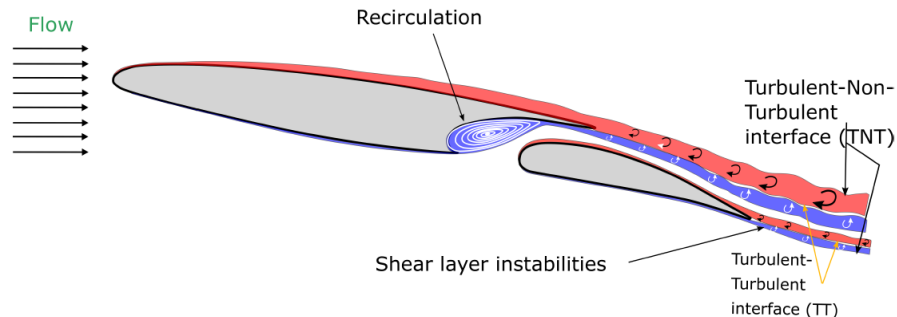
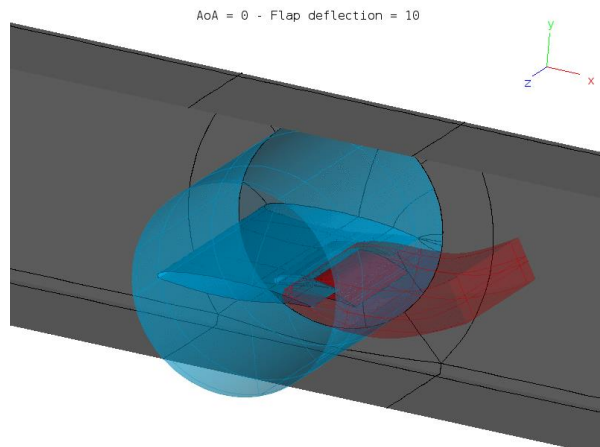
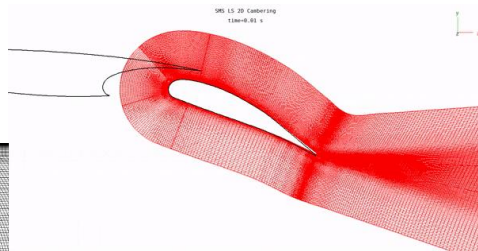
- Introduction
- Numerical methods
  - *NSMB solver and Meshing*
  - *Modeling of ZNMF devices*
- Results
  - *Critical Flow Conditions*
  - *Configuration 1 with horizontal nacelle*
  - *Configuration 2 with tilted nacelle*
  - *Configuration 3 with deflected aileron*
- Conclusions and Perspectives

# Numerical methods

## ➤ NSMB solver: Navier Stokes Multi-Block code



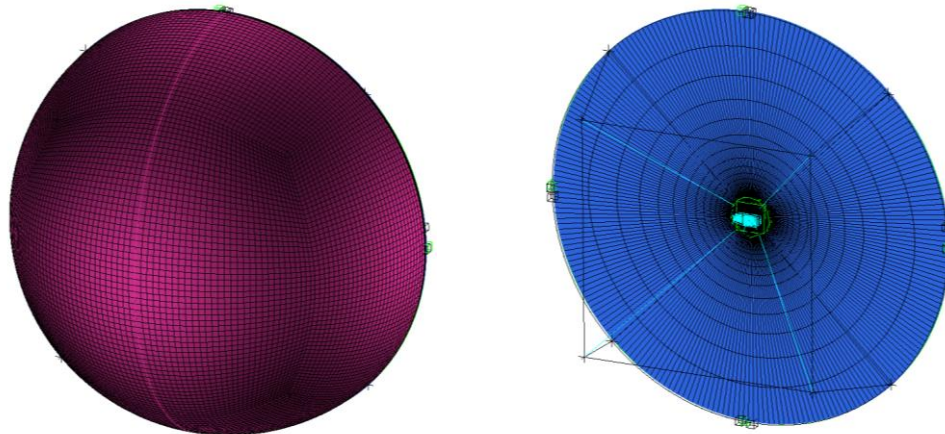
$U_\infty$	68 m/s
Ma	0.2
$\alpha^\circ$	$0^\circ - 8^\circ$
$\delta$	$10^\circ - 40^\circ$



## ➤ Turbulence models: DDES-SA and URANS (SA)

# Numerical methods

- NSMB solver: Navier Stokes Multi-Block code (compressible NS equations using Finite Volume method) [Hoarau et al. 2016]
- Structured grids are designed following the gridding guidelines of AIAA CFD HighLift/Drag Prediction Workshops
- Farfield boundary  $> 100 \times C_{ref}$
- Turbulence model  $k - \omega - SST$
- Patched grid and chimera grid techniques are used





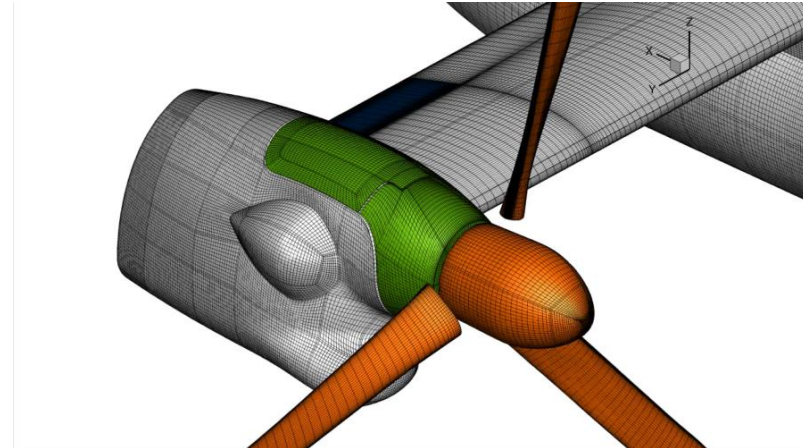
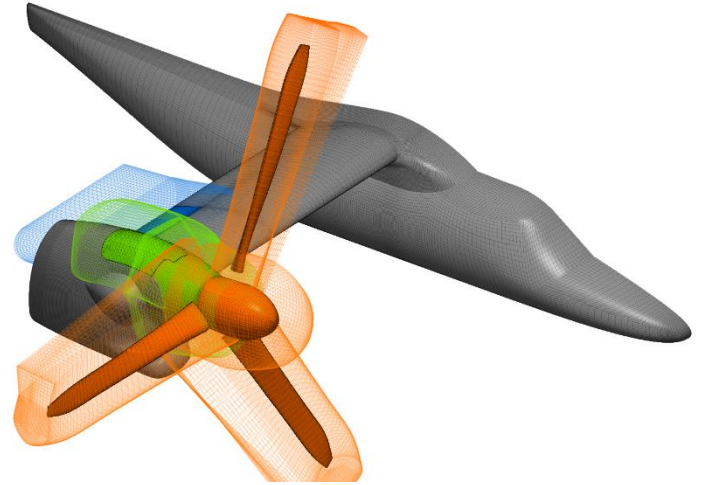
# Numerical methods

7 grid components that are merged together (within ICEMCFD or externally with Python scripts)

- Base (fuselage, wing, nacelle) - 10'200'000 cells
- Aileron - 620'000 cells
- Engine cover - 370'000 cells
- Engine - 450'000 cells
- Hub - 340'000 cells
- Blades - 770'000 cells/blade

The engine can be deflected from  $0^\circ$  to  $90^\circ$

Total mesh 25 millions cells





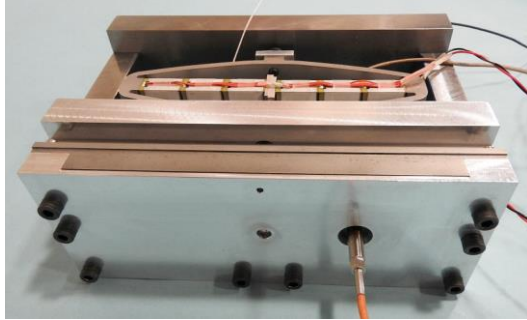
# Numerical methods

## Modelling of Zero-Net-Mass-Flux (ZNMF) devices

ASPIC synthetic jet actuator

ONERA

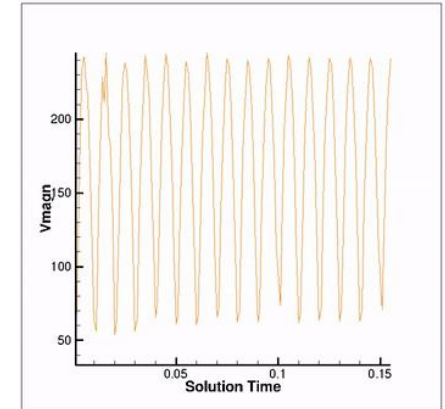
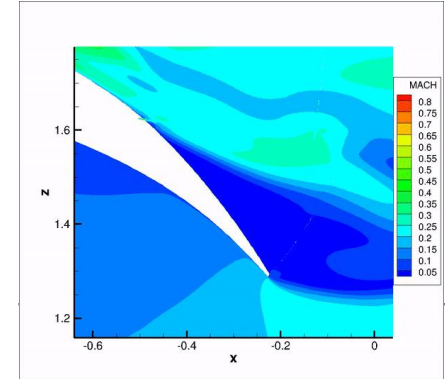
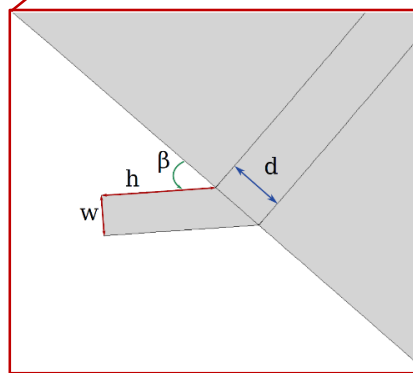
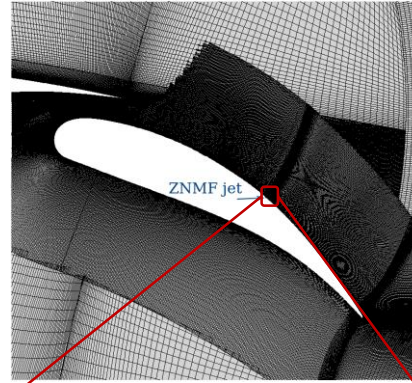
THE FRENCH AEROSPACE LAB



Slot dimensions: 1x150 mm<sup>2</sup>

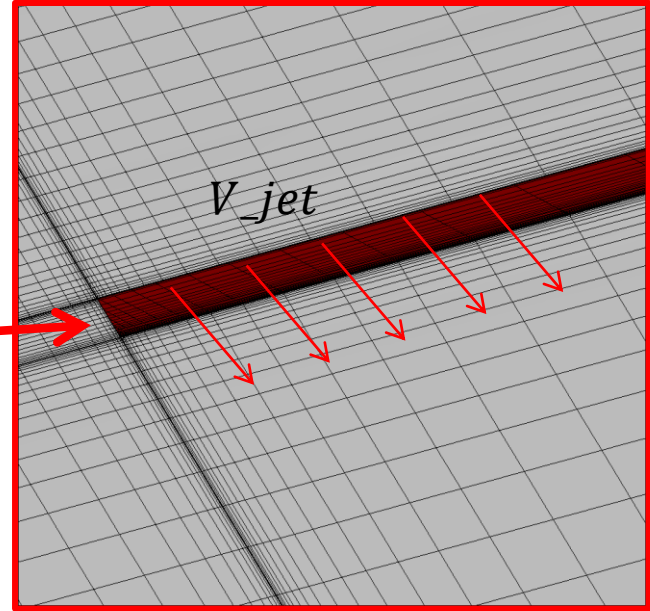
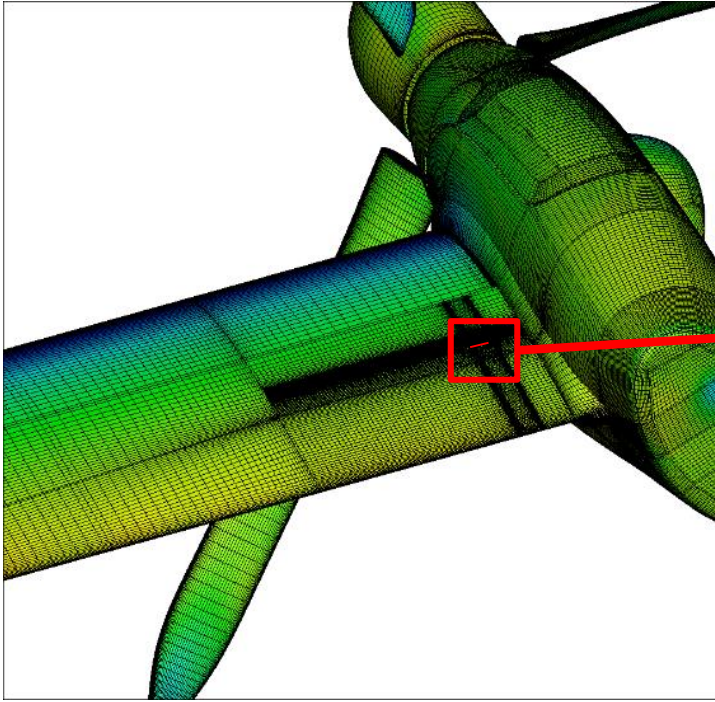
Actuator volume: 164x94x57 mm<sup>3</sup>

modelling  
→



# Numerical methods

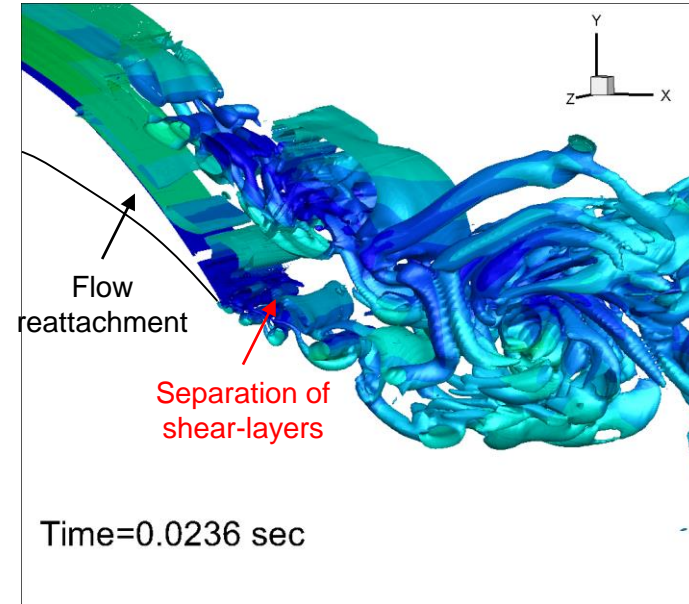
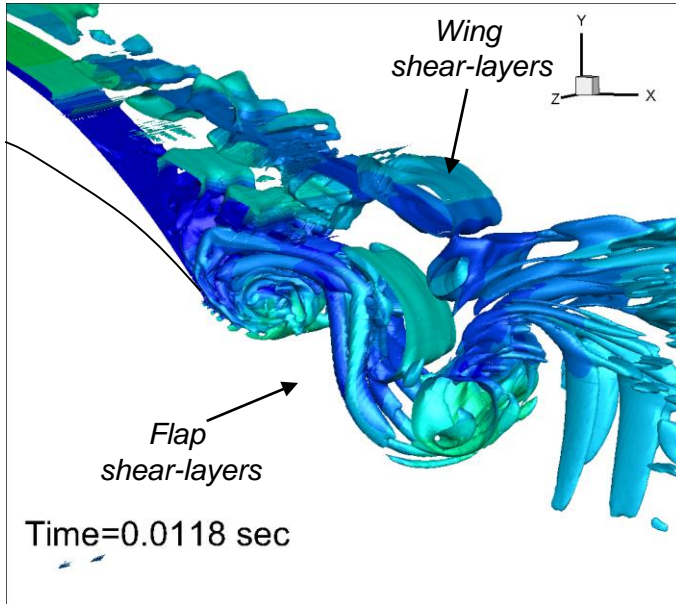
## *Modelling of ZNMF devices*



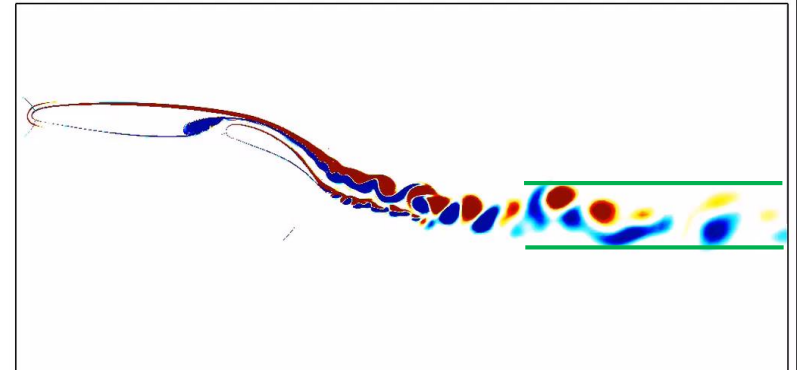
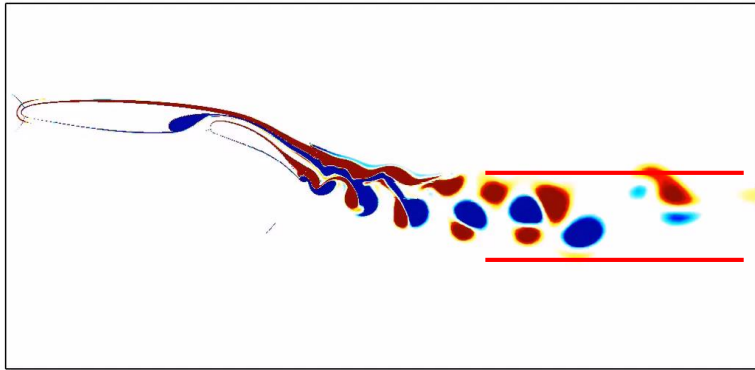
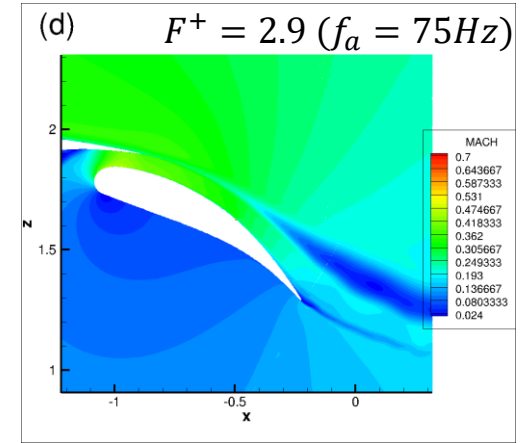
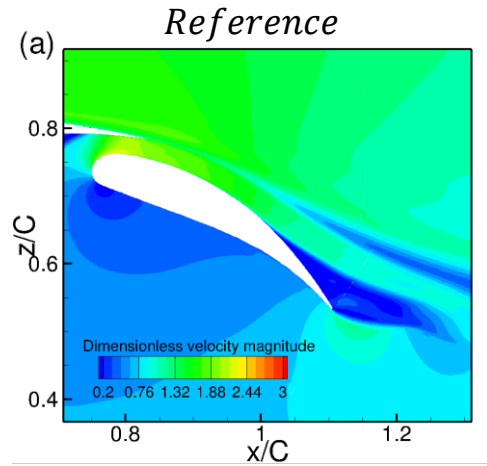
# Drag Reduction of Tilt Rotor Aircraft using ZNMF

- Introduction
- Numerical methods
  - *NSMB solver and Meshing*
  - *Modeling of ZNMF devices*
- **Results**
  - *2D simulations*
  - *Critical Flow Conditions*
  - *Configuration 1 with horizontal nacelle*
  - *Configuration 2 with tilted nacelle*
  - *Configuration 3 with deflected aileron*
- Conclusion and Perspectives

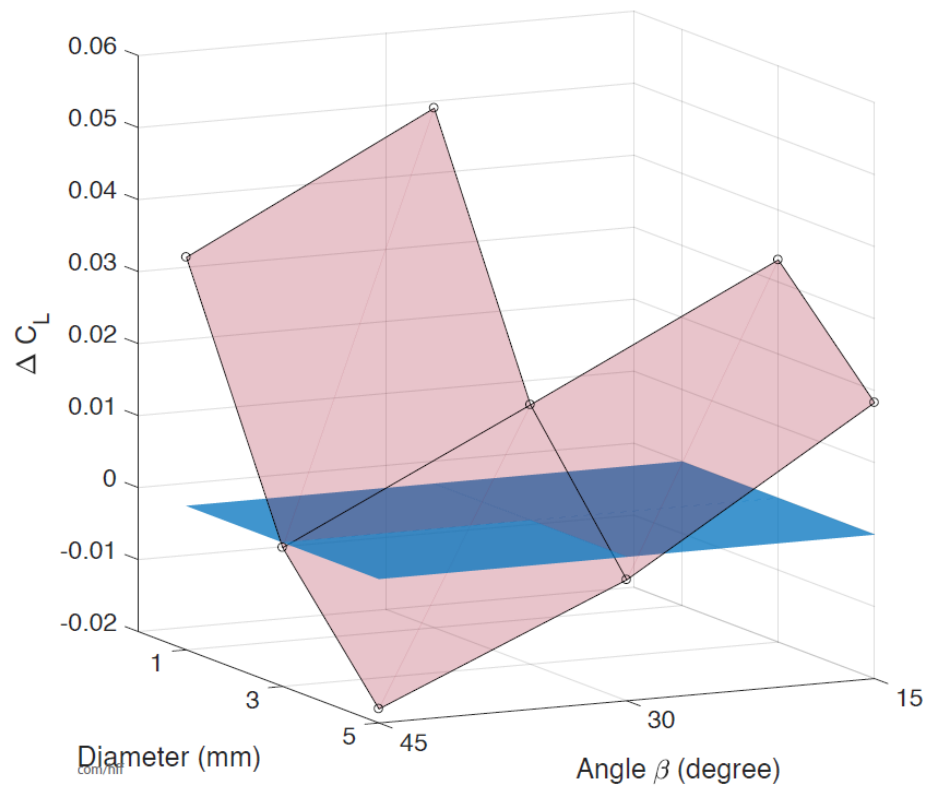
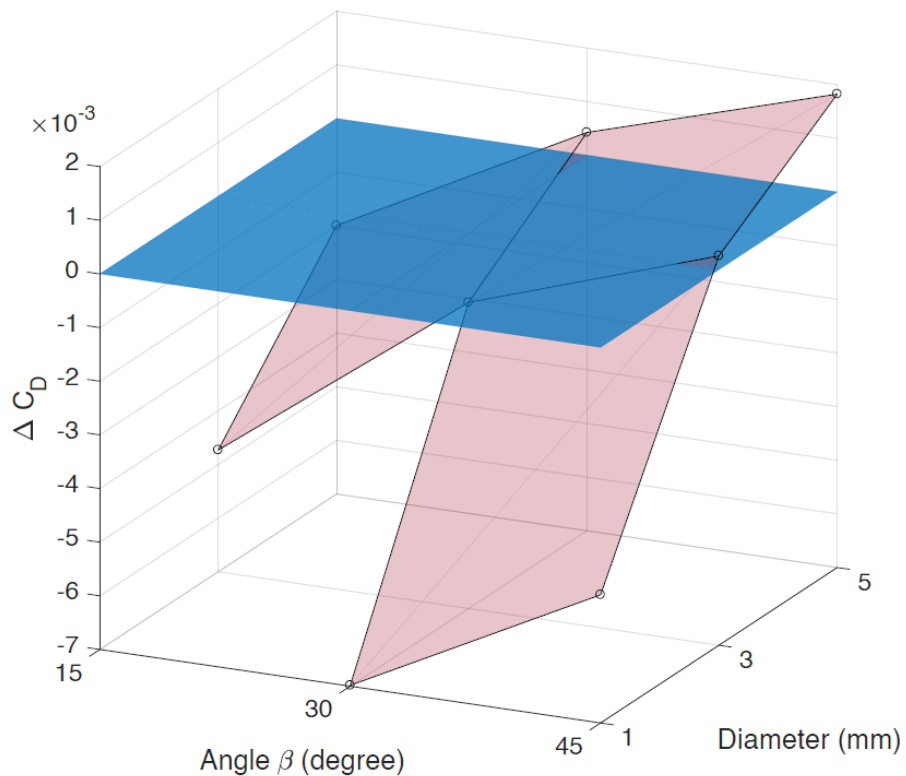
# Hybrid turbulence modelling DDES-SA with ZNMF



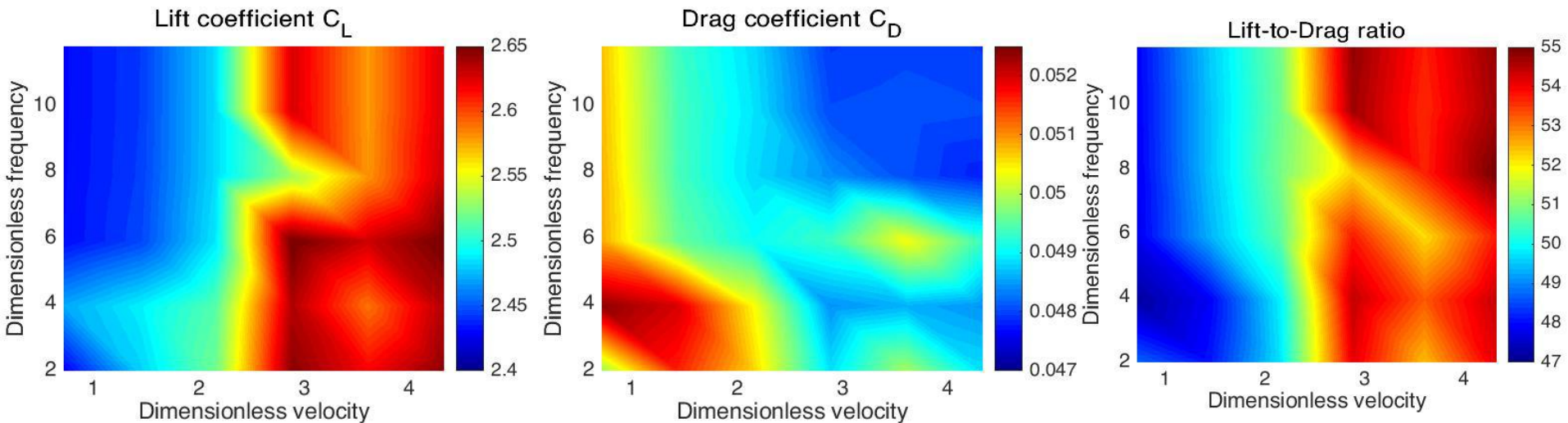
# Active Flow Control (blowing-suction ZNMF)



# Active Flow Control (blowing-suction ZNMF)

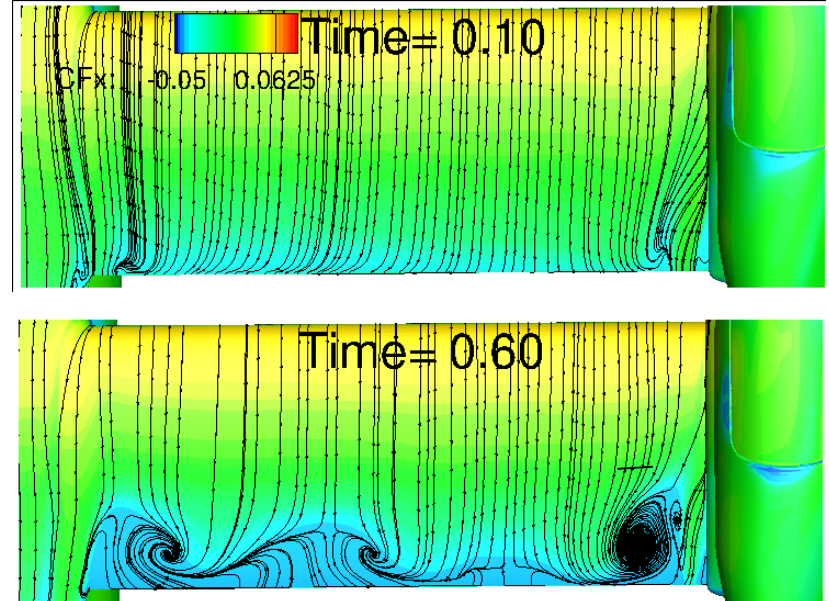
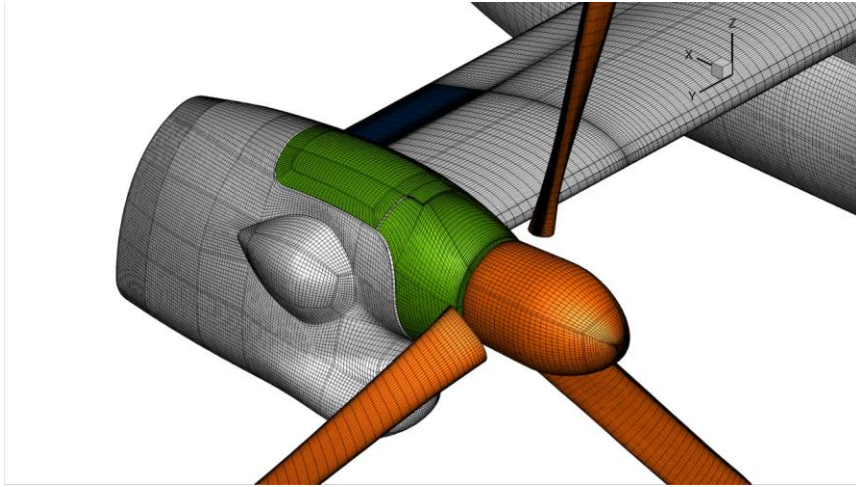


# Active Flow Control (blowing-suction ZNMF)



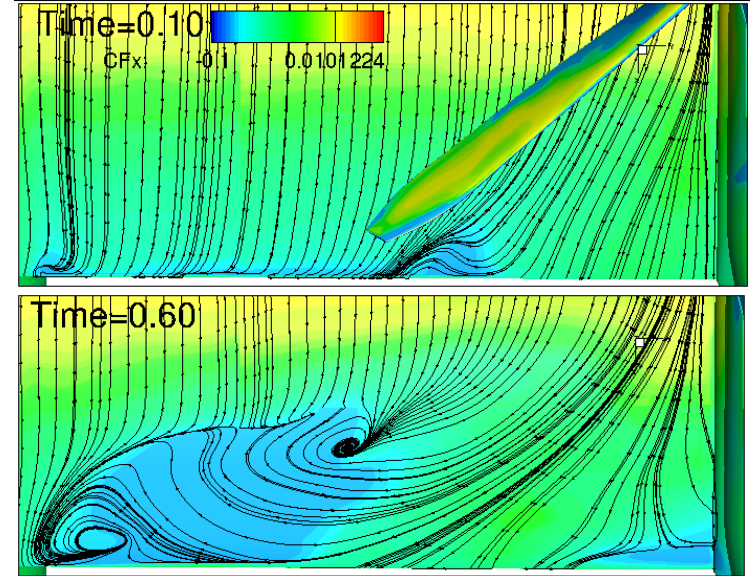
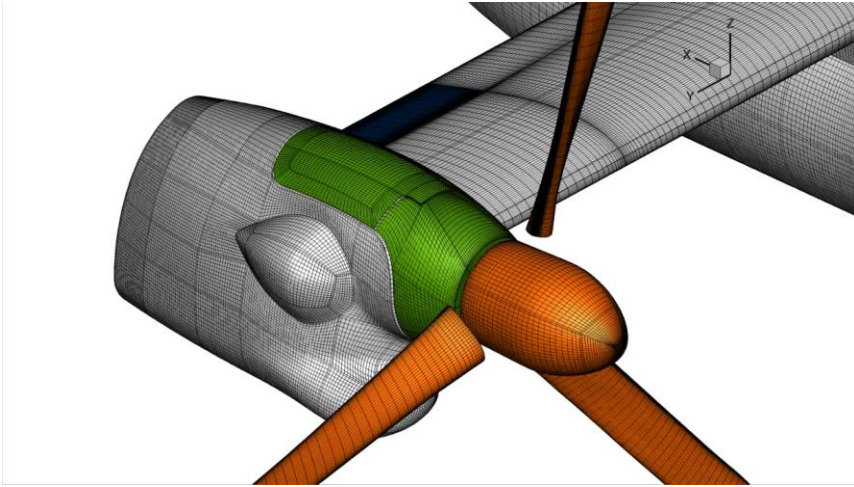


# Critical Flow Conditions



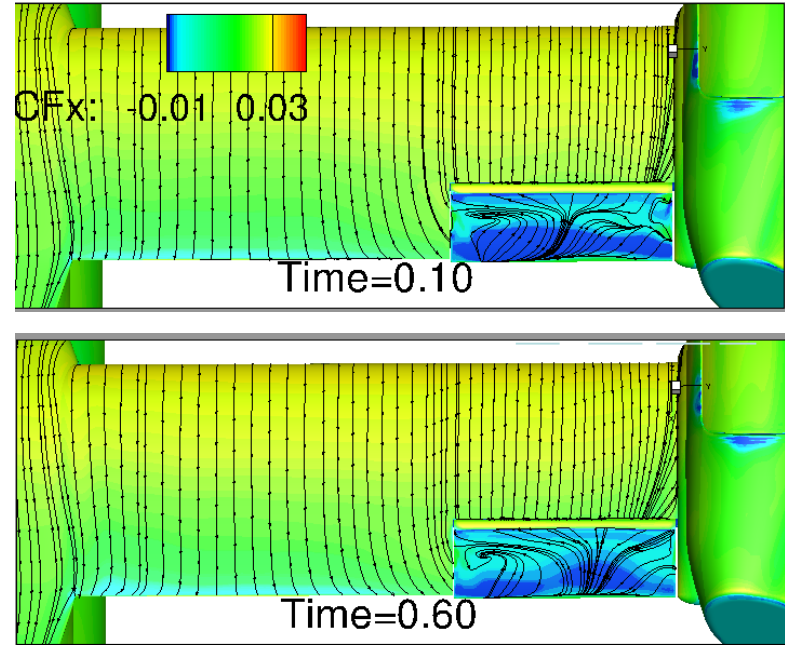
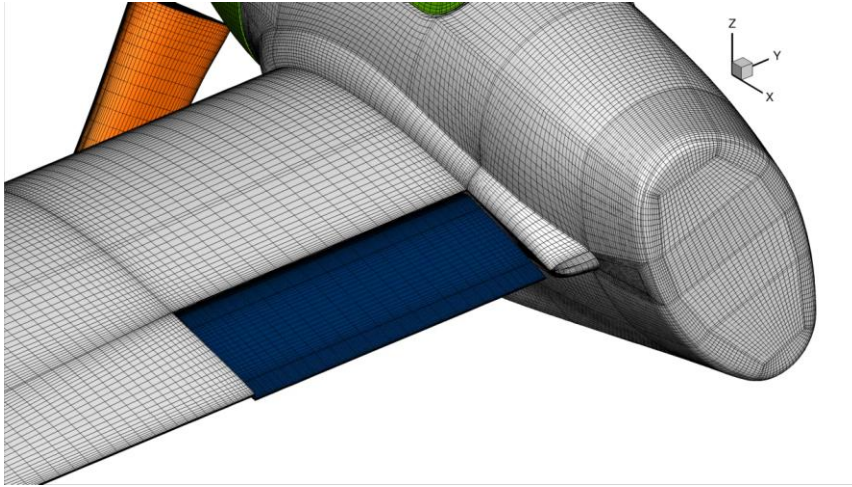
*Skin friction  $CF_x$  component contours with streamlines of CF ( $CF_x$ ,  $CF_y$ ,  $CF_z$ ) with **horizontal nacelle***

# Critical Flow Conditions



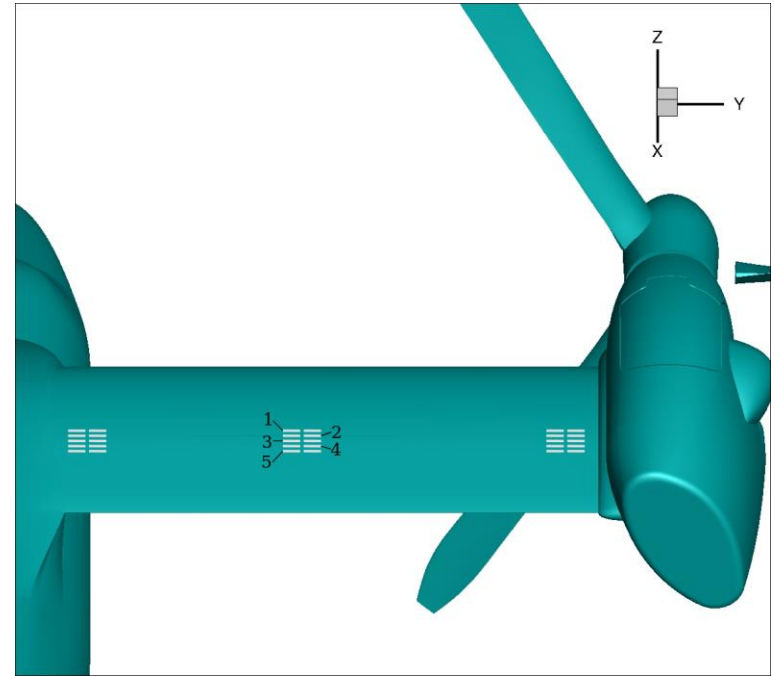
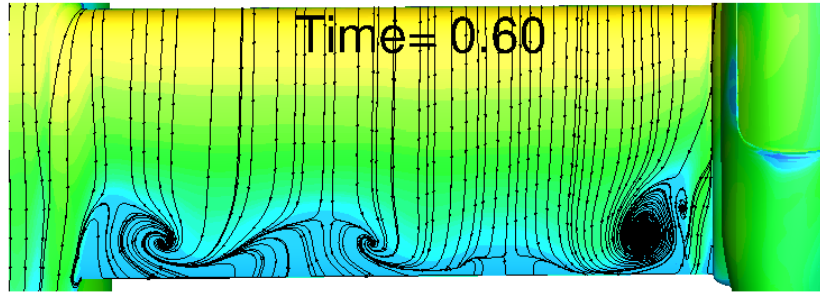
*Skin friction  $C_{fx}$  component contours with streamlines of CF ( $C_{fx}$ ,  $C_{fy}$ ,  $C_{fz}$ ) with **tilted nacelle***

# Critical Flow Conditions



*Skin friction  $CF_x$  component contours with streamlines of CF ( $CF_x$ ,  $CF_y$ ,  $CF_z$ ) with **deflected aileron***

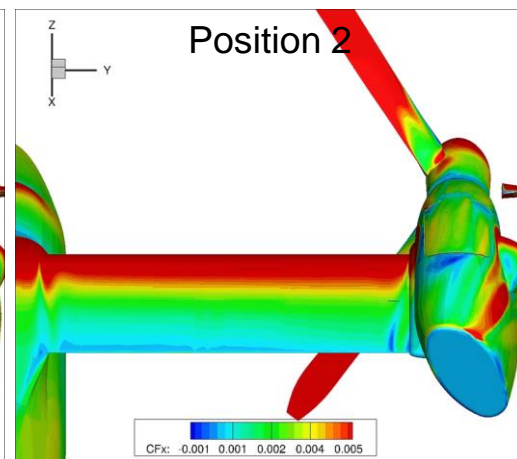
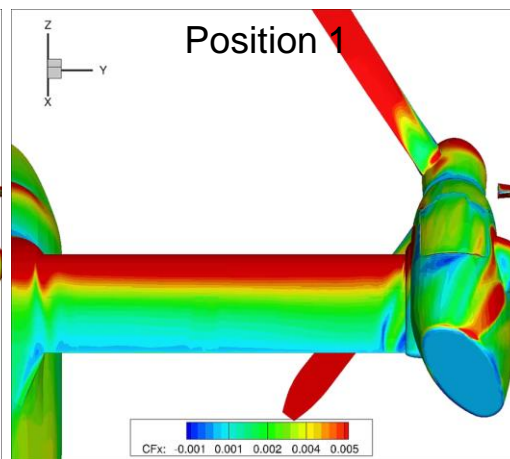
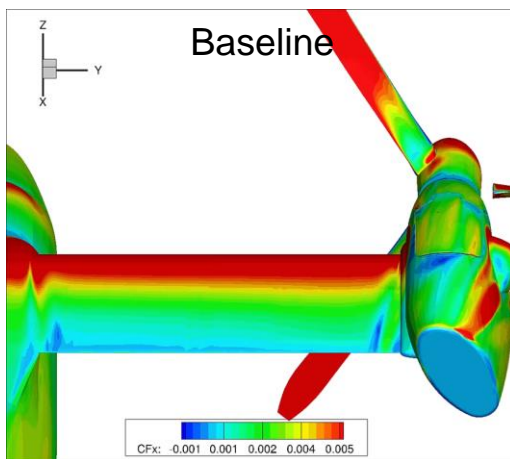
# Configuration 1 with horizontal nacelle



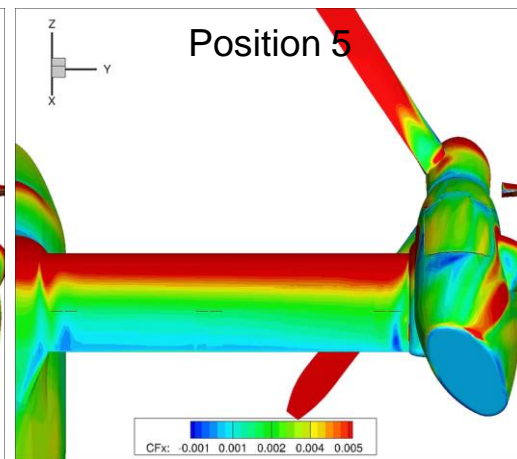
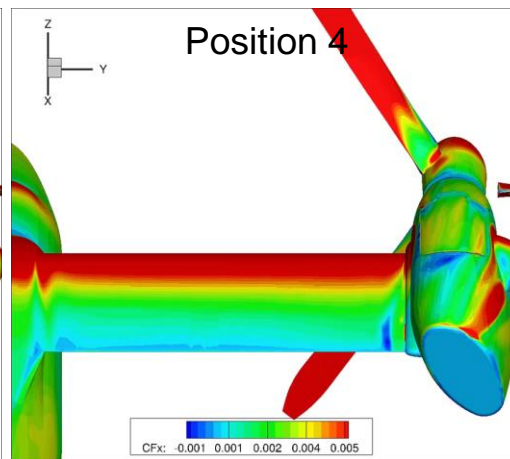
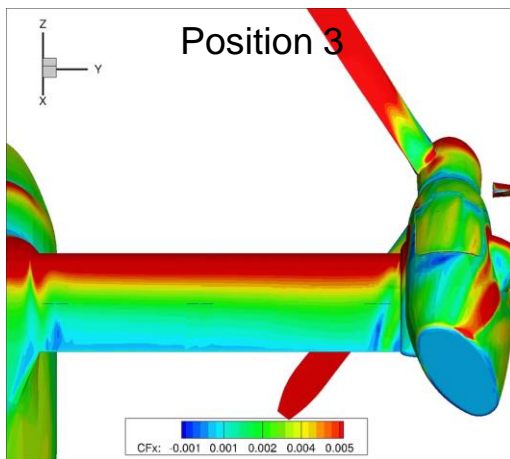
*6 ZNMFs are placed upstream of three zones of separation*

# Configuration 1 with horizontal nacelle

*Simulations show  
skin friction  $CF_x$*



*ZNMF parameters  
 $v = 300 \text{ m/s}$   
 $f = 65 \text{ Hz}$*

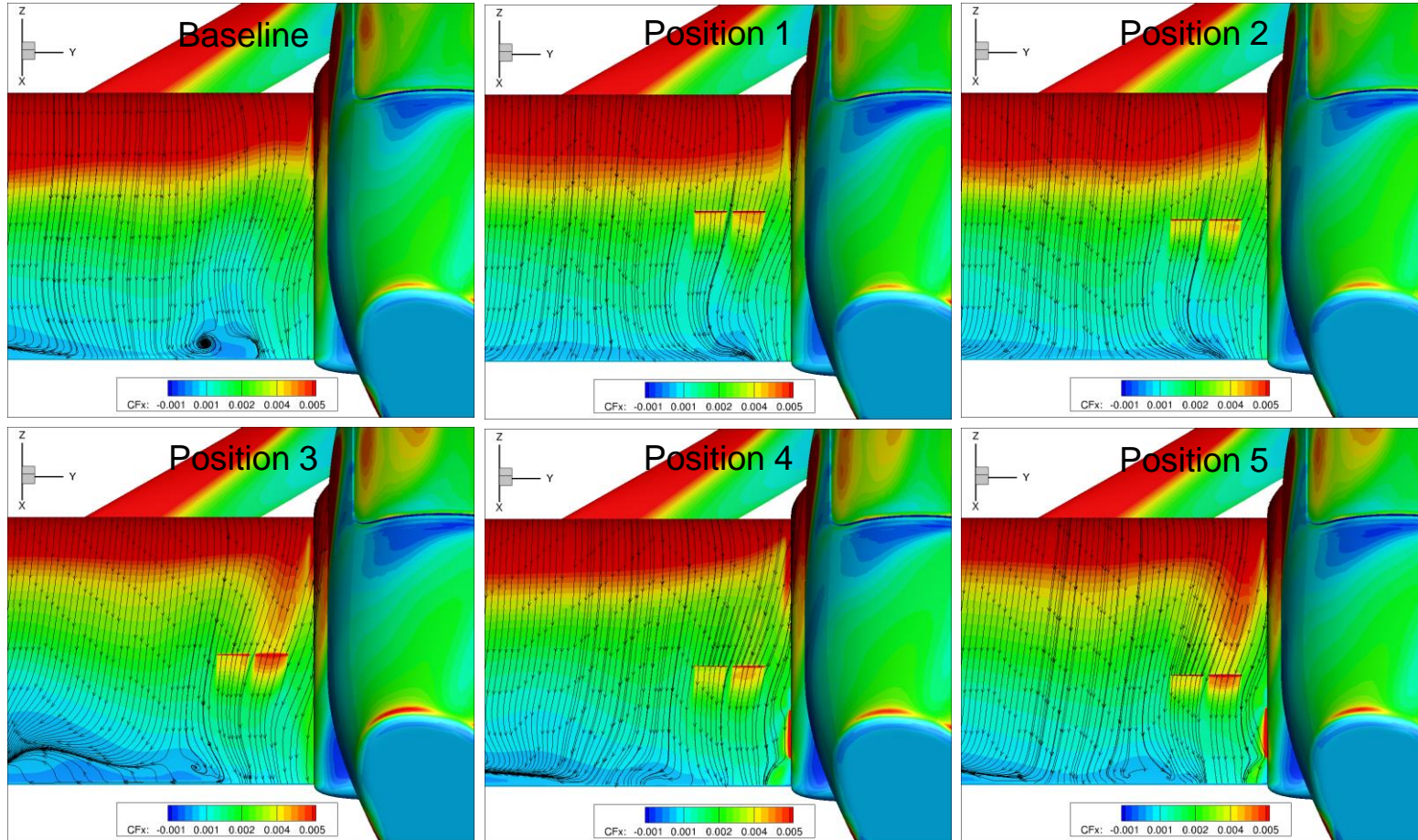




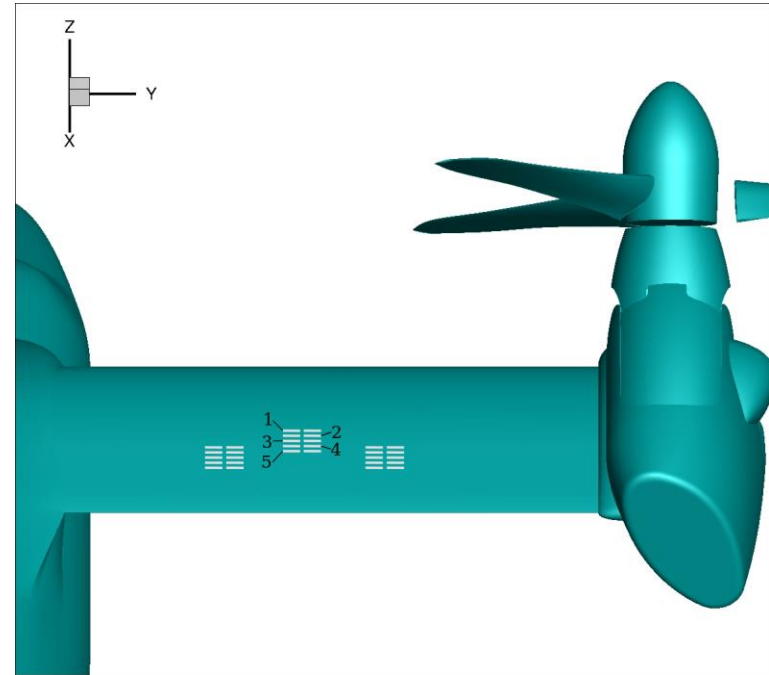
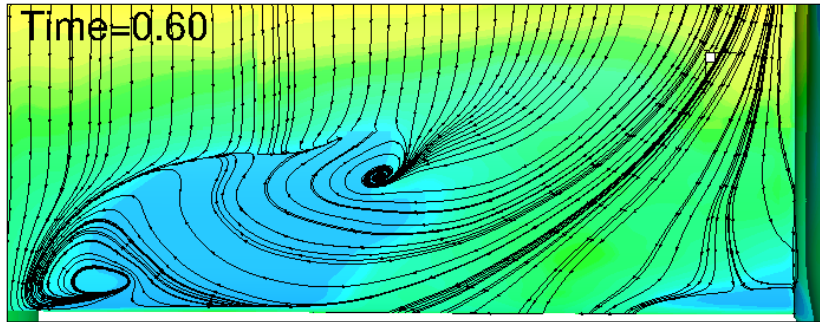
# Configuration 1 with horizontal nacelle

*Simulations show  
skin friction  $CF_x$*

*ZNMF parameters  
 $v = 300 \text{ m/s}$   
 $f = 65 \text{ Hz}$*



# Configuration 2 with tilted nacelle



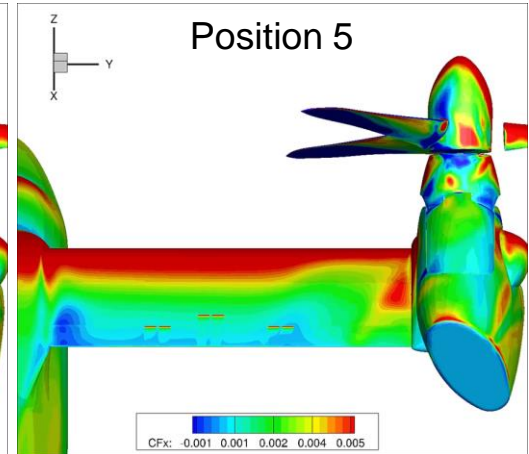
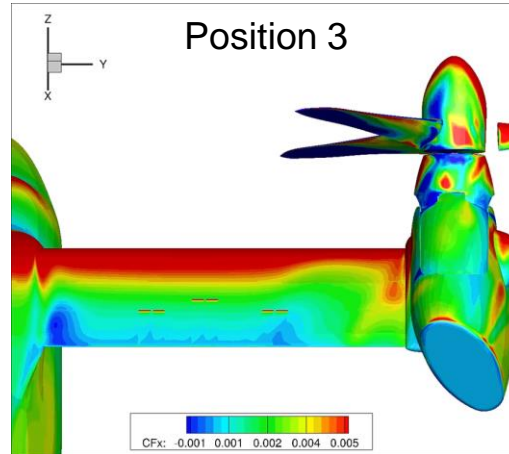
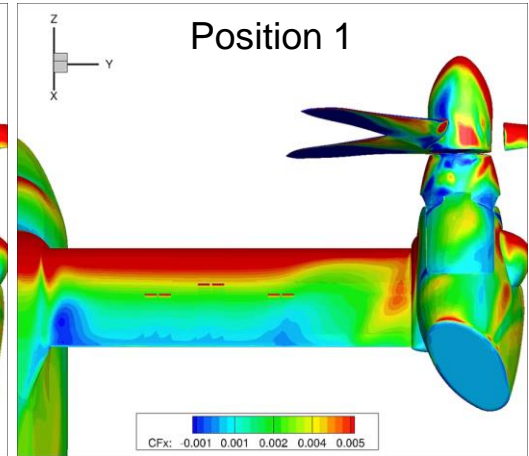
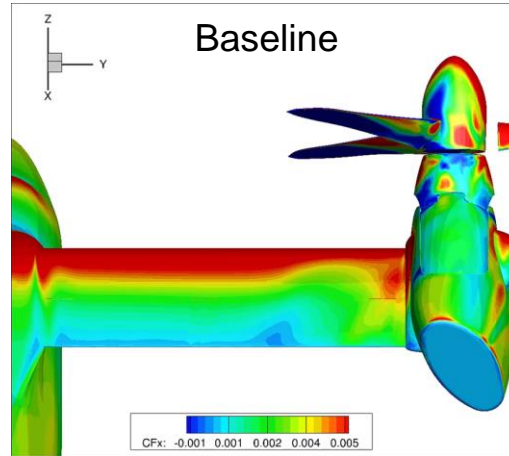
*6 ZNMFs are placed upstream of the separation zones in the middle of the wing*



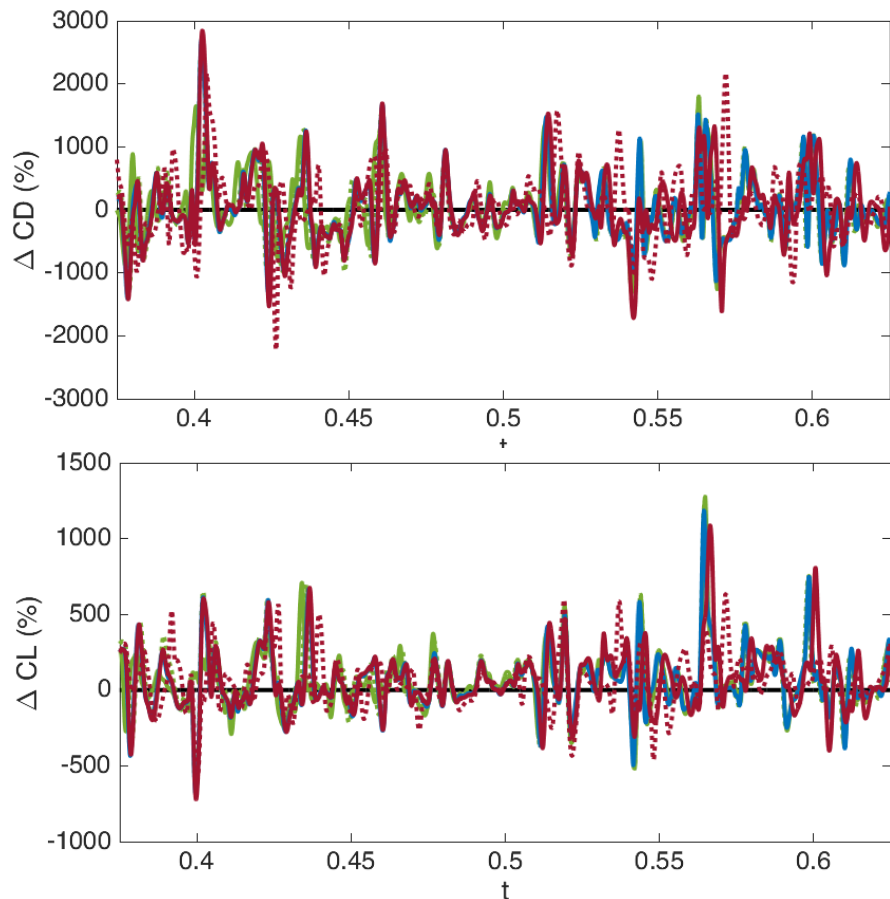
# Configuration 2 with tilted nacelle

*Simulations show  
skin friction  $CF_x$*

*ZNMF parameters  
 $v = 300 \text{ m/s}$   
 $f = 65 \text{ Hz}$*



# Configuration 2 with tilted nacelle



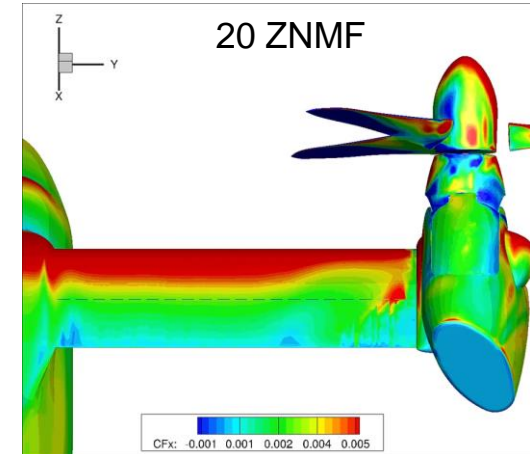
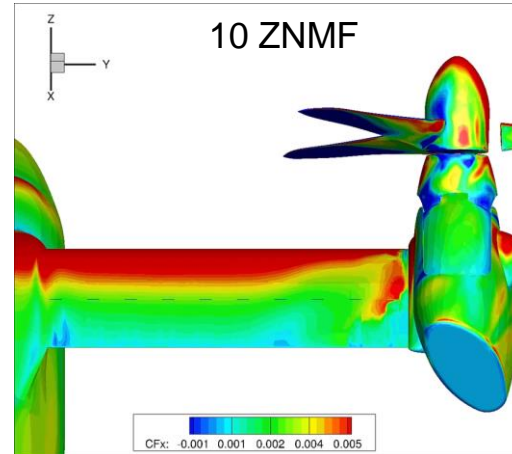
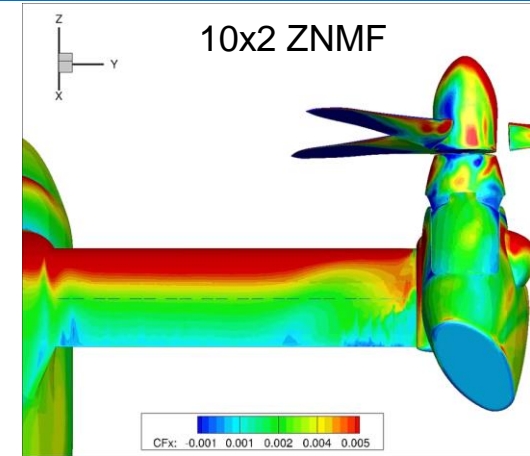
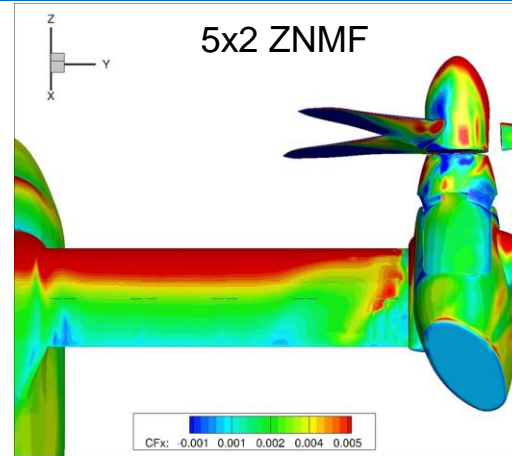
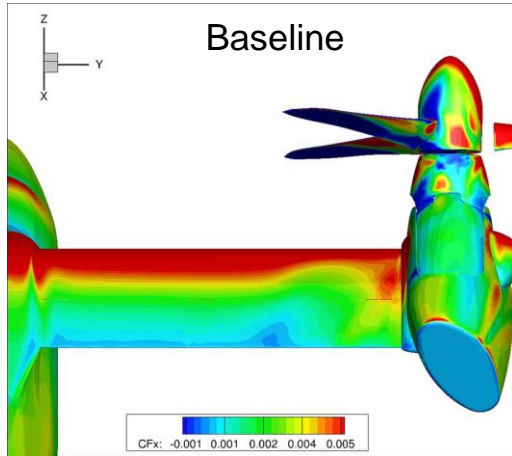
Forces integrated on the wing  
for the 4<sup>th</sup> and 5<sup>th</sup> rotations of the propeller

$$\bar{C}_L, \bar{C}_D = \frac{1}{t_2 - t_1} \int_{t_1}^{t_2} \bar{C}(t) dt$$

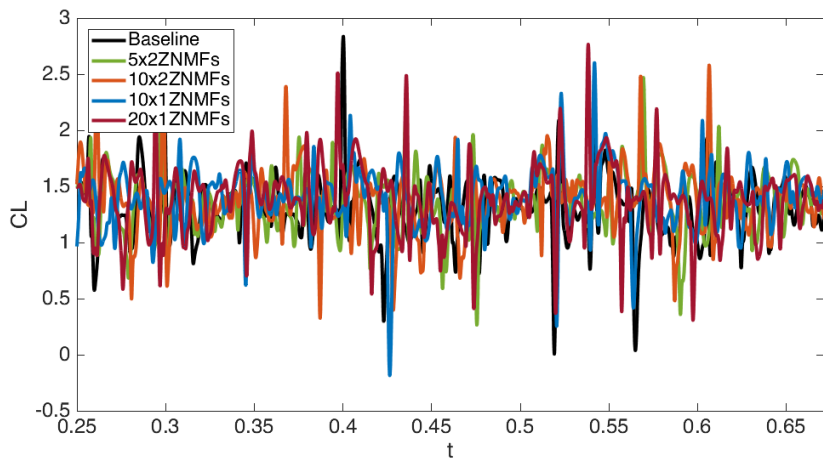
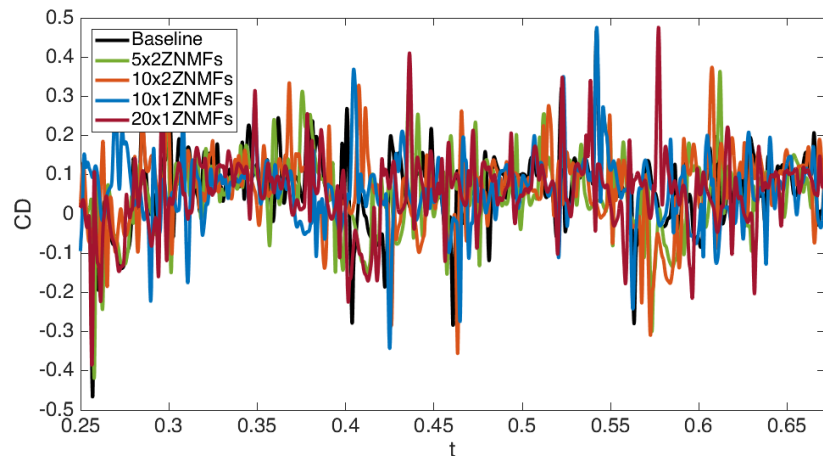
ZNMF position	$\Delta CD$	$\Delta CL$	$\Delta CL/CD$
1	12.29%	14.32%	1.82%
2	22.14%	12.86%	-7.59%
3	16.75%	12.34%	-3.78%
4	21.80%	12.66%	-7.51%
5	23.19%	11.87%	-9.19%

Lift enhancement accompanied with drag increase  
=> lift-to-drag ratio decreases

# Configuration 2 - CFx



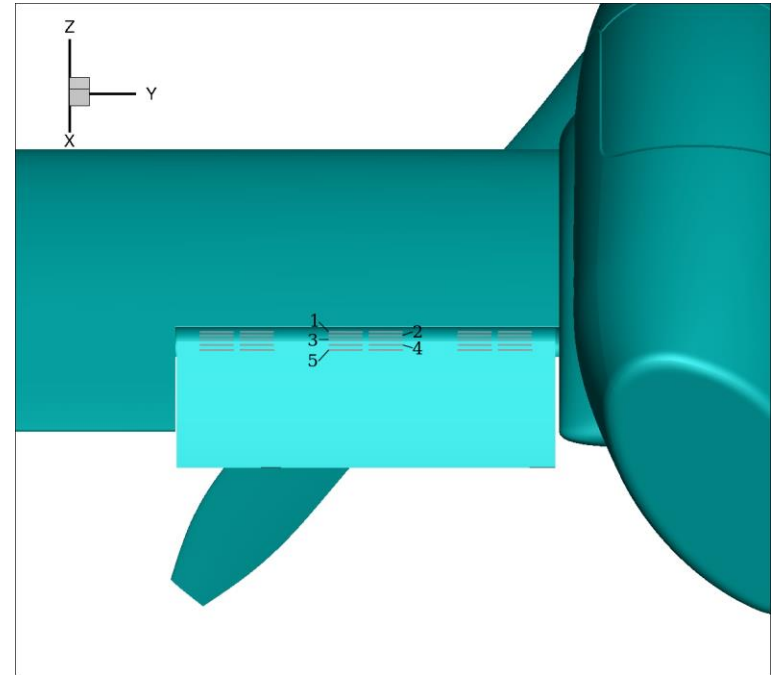
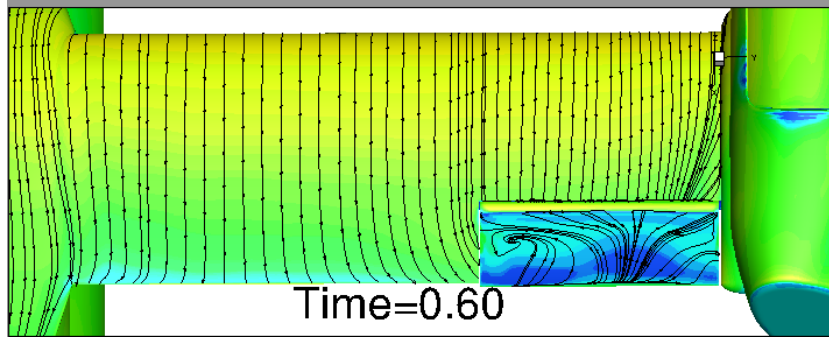
# Configuration 2 – forces on the wing (bc322)



Forces integrated on the 3<sup>rd</sup>, 4<sup>th</sup> and 5<sup>th</sup> cycles

Number of ZNMF	$C_D$	$C_L$	$C_L/C_D$
Baseline	0.062931	1.318551	20.95223
5x2	0.051597 -18.01%	1.360576 +3.19%	26.36939 +25.85%
10x2	0.060883 -3.26%	1.38261 +4.86%	22.70945 +8.39%
10x1	0.058348 -7.28%	1.401107 +6.26%	24.01302 +14.61%
20x1	0.053571 -14.87%	1.387395 +5.22%	25.89821 +23.61%

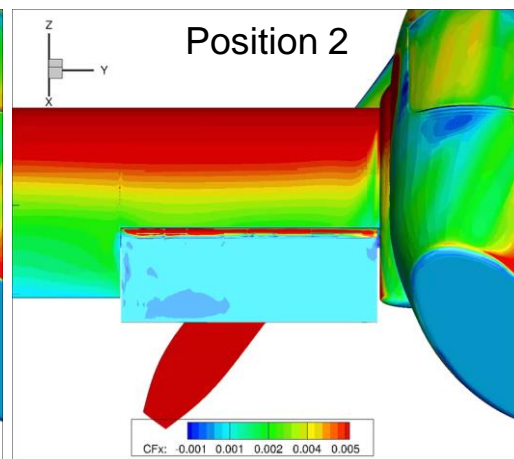
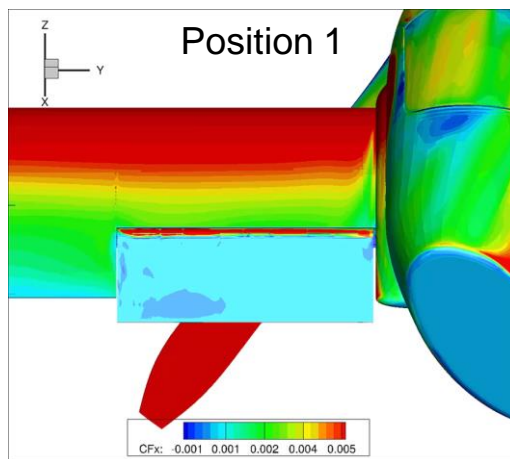
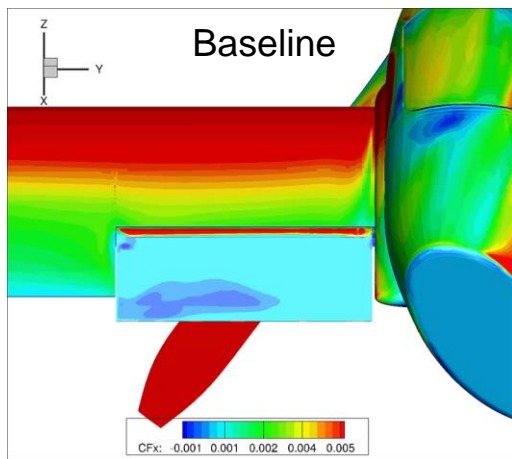
# Configuration 3 with deflected aileron



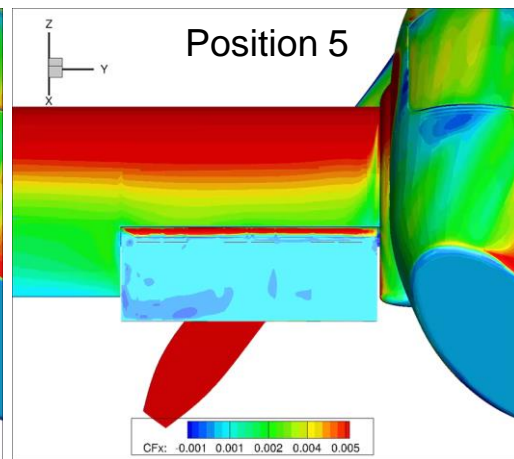
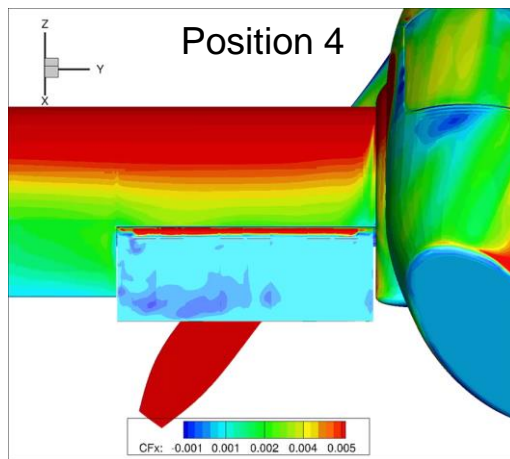
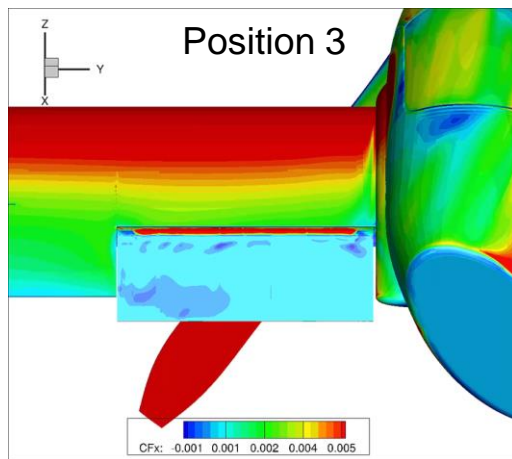
*6 ZNMFs are placed near the leading edge of the aileron*

# Configuration 3 with deflected aileron

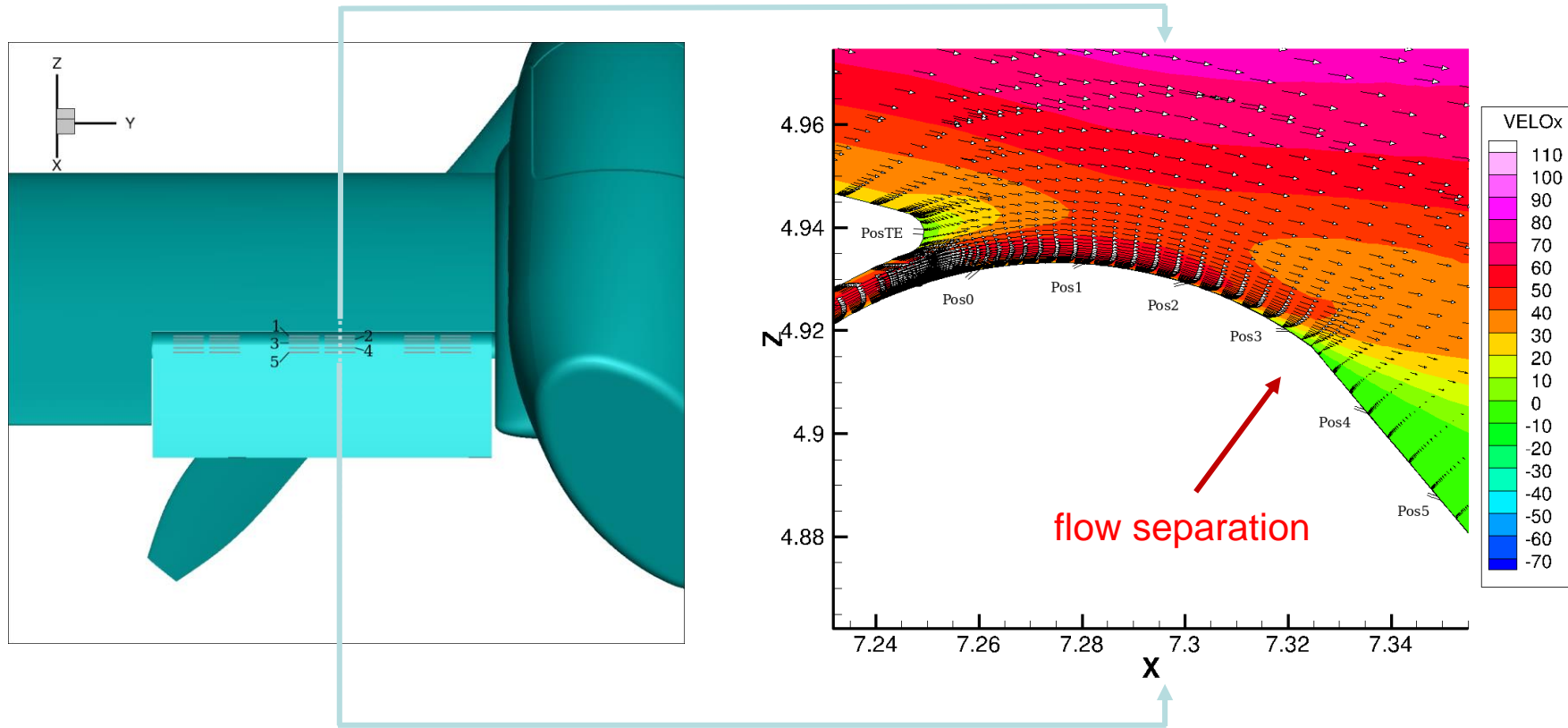
*Simulations show  
skin friction  $CF_x$*



*ZNMF parameters  
 $v = 300 \text{ m/s}$   
 $f = 65 \text{ Hz}$*



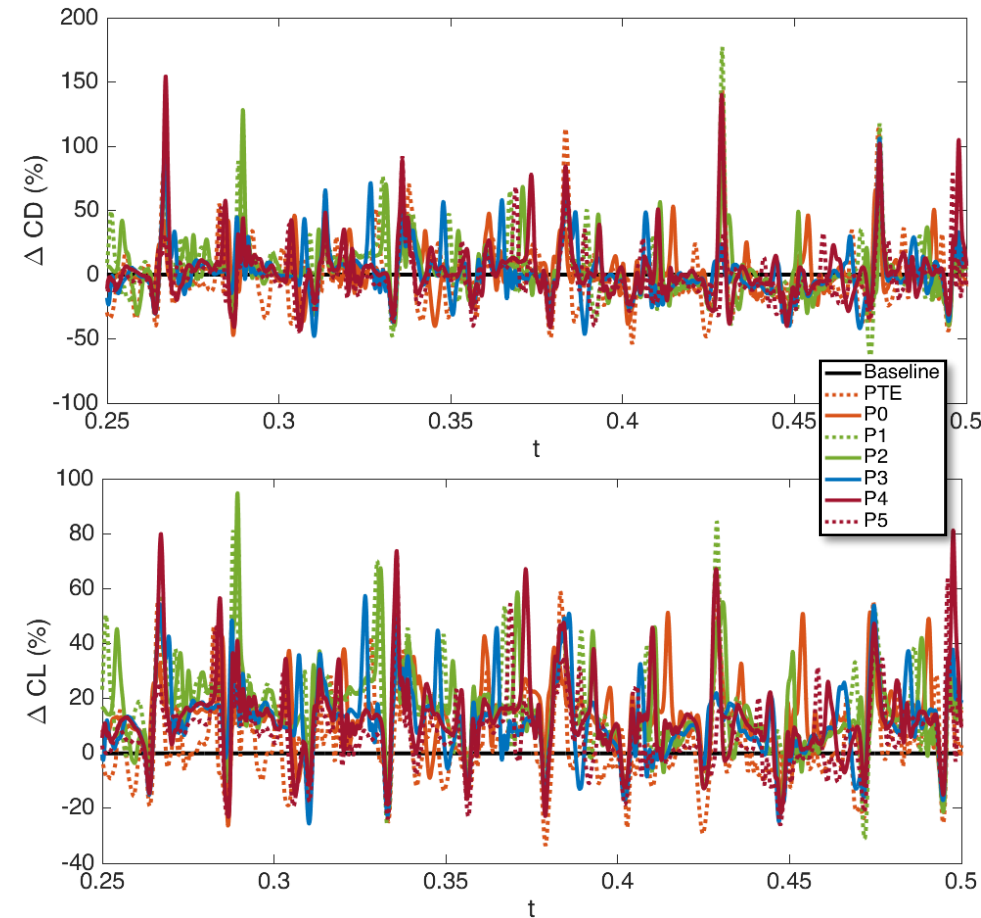
# Configuration 3 with deflected aileron



*ZNMF positions on deflected aileron*



# Configuration 3 with deflected aileron



Forces integrated on the aileron  
for the 3<sup>rd</sup> and 4<sup>th</sup> rotations of the propeller

ZNMF position	$\Delta CD$	$\Delta CL$	$\Delta CL/CD$
TE	-4.27%	2.10%	6.65%
0	0.04%	13.10%	13.06%
1	1.33%	14.10%	12.60%
2	2.23%	14.52%	12.03%
3	-0.14%	10.64%	10.80%
4	1.77%	11.81%	9.86%
5	-3.36%	5.79%	9.47%

Lift enhancement while drag remaining unchanged  
=> lift-to-drag ratio is improved effectively

# Drag Reduction of Tilt Rotor Aircraft using ZNMF

- Introduction
- Numerical methods
  - *NSMB solver and Meshing*
  - *Modeling of ZNMF devices*
- Results
  - *Critical Flow Conditions*
  - *Configuration 1 with horizontal nacelle*
  - *Configuration 2 with tilted nacelle*
  - *Configuration 3 with deflected aileron*
- **Conclusions and Perspectives**

# Conclusions

- CFD simulations to optimise location of ZNMF for flow control of NCGTR (reference parameters of the ZNMF  $v = 300m/s$ ,  $f = 65Hz$ ,  $D/H = 1mm$ ,  $Angle = 45^\circ$ )
- ZNMF devices are able to reduce flow separations in critical flow regions, but their location needs to be selected with care
- Optimization of ZNMF position
  - Configuration with nacelle tilting: Improvement of lift (+14.32%) and increase of drag (12.3%) => higher lift-to-drag ratio (1.8%)
  - Configuration with aileron deflection: Lift enhancement while drag remaining unchanged => L/D ratio of the aileron is improved effectively (12%)

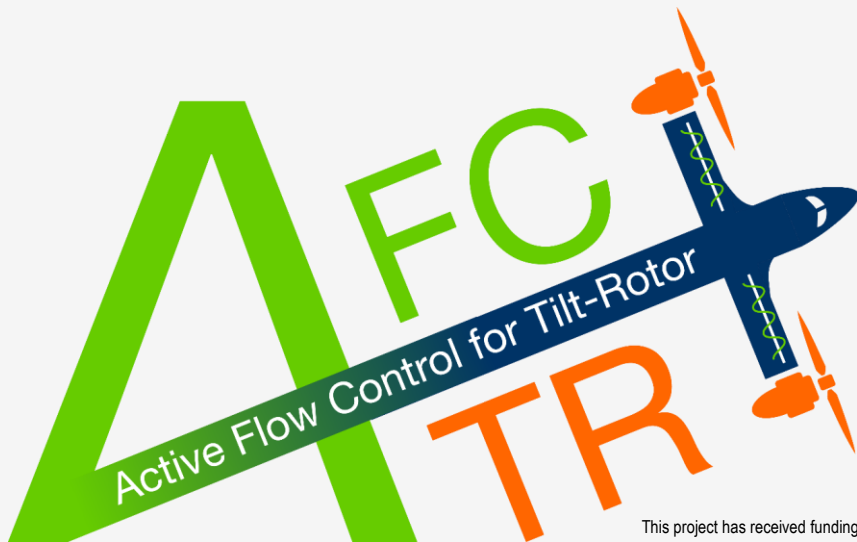


# Acknowledgement

This project has received funding from the European Union's H2020 - CleanSky2 research and innovation framework programme under grant agreement No 886718



# Thank You !



CFS Engineering

Computational Fluids & Structures Engineering



Université

de Strasbourg



# References

- [1] Truong, H., Marouf, A., Chouippe, A., Hoarau, Y., Charbonnier, D., Gehri, A. & Vos, J.B., Vos. (2022). Flow analysis around a VTOL aircraft near stall conditions and application of Active Flow Control to enhance the aerodynamic performances at real flight conditions. AIAA AVIATION 2022 Forum, Chicago, IL & Virtual, June 27-July 1, 2022. <https://doi.org/10.2514/6.2022-3238>
- [2] Marouf, A., Truong, H., Hoarau, Y., Charbonnier, D., Vos, J.B., & Braza, M. (2022). CFD simulations of active flow control devices applied on a cambered flap. AIAA SCITECH 2022 Forum, January 3-7, 2022, San Diego, CA & Virtual. <https://doi.org/10.2514/6.2022-1545>
- [3] Marouf, A., Chouippe, A., Vos, J.B., Charbonnier, D., Gehri, A., Braza, M., & Hoarau. Y., (2021). Unsteady CFD simulations for Active Flow Control. AIAA AVIATION 2021 FORUM, Virtual Event, United States, August 2021. <https://doi.org/10.2514/6.2021-2854>