



HAL
open science

Correction to: Cystic fibrosis–related diabetes onset can be predicted using biomarkers measured at birth

Yu-Chung Lin, Katherine Keenan, Jiafen Gong, Naim Panjwani, Julie Avolio, Fan Lin, Damien Adam, Paula Barrett, Stéphanie Bégin, Yves Berthiaume, et al.

► To cite this version:

Yu-Chung Lin, Katherine Keenan, Jiafen Gong, Naim Panjwani, Julie Avolio, et al.. Correction to: Cystic fibrosis–related diabetes onset can be predicted using biomarkers measured at birth. *Genetics in Medicine*, 2021, 23 (11), pp.2235-2236. 10.1038/s41436-021-01281-z . hal-03827743

HAL Id: hal-03827743

<https://hal.science/hal-03827743v1>

Submitted on 15 Jul 2024

HAL is a multi-disciplinary open access archive for the deposit and dissemination of scientific research documents, whether they are published or not. The documents may come from teaching and research institutions in France or abroad, or from public or private research centers.

L'archive ouverte pluridisciplinaire **HAL**, est destinée au dépôt et à la diffusion de documents scientifiques de niveau recherche, publiés ou non, émanant des établissements d'enseignement et de recherche français ou étrangers, des laboratoires publics ou privés.



CORRECTION

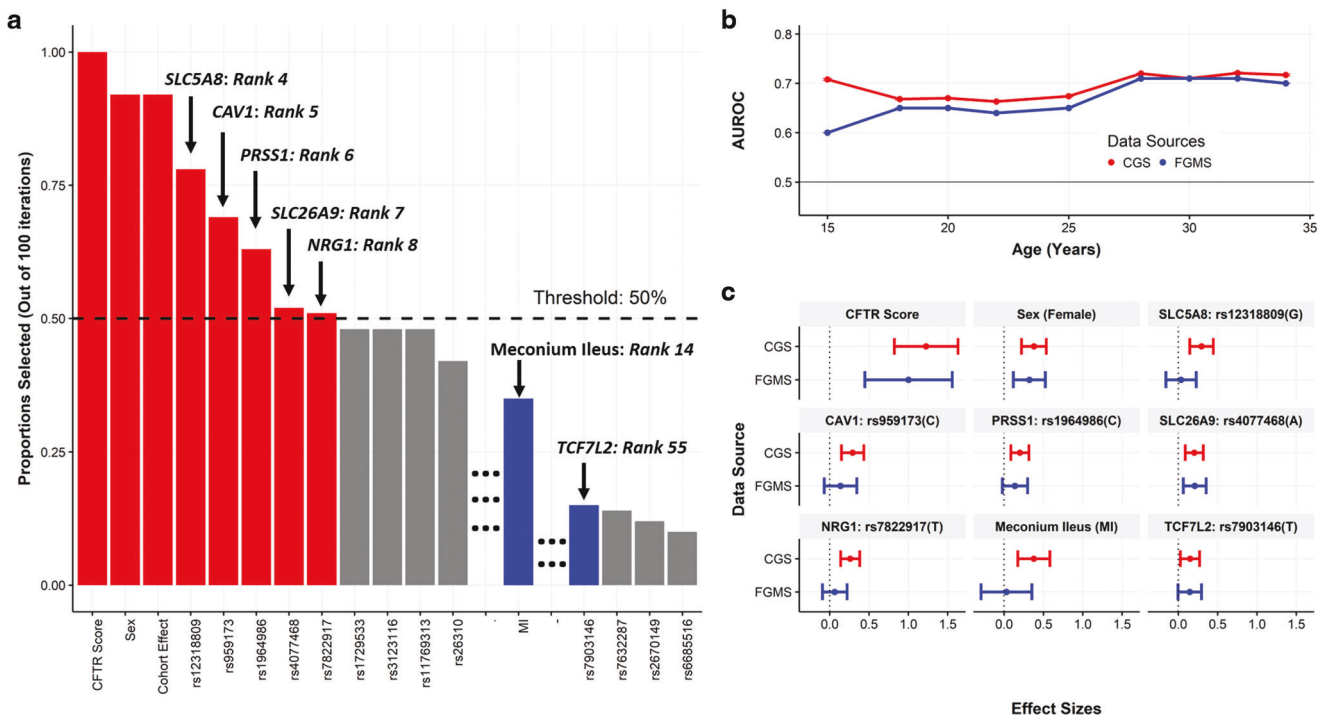
Correction to: Cystic fibrosis–related diabetes onset can be predicted using biomarkers measured at birth

Yu-Chung Lin, Katherine Keenan, Jiafen Gong, Naim Panjwani, Julie Avolio, Fan Lin, Damien Adam, Paula Barrett, Stéphanie Bégin, Yves Berthiaume, Lara Bilodeau, Candice Bjornson, Janna Brusky, Caroline Burgess, Mark Chilvers, Raquel Consunji-Araneta, Guillaume Côté-Maurais, Andrea Dale, Christine Donnelly, Lori Fairservice, Katie Griffin, Natalie Henderson, Angela Hillaby, Daniel Hughes, Shaikh Iqbal, Jennifer Itterman, Mary Jackson, Emma Karlsen, Lorna Kosteniuk, Lynda Lazosky, Winnie Leung, Valerie Levesque, Émilie Maille, Dimas Mateos-Corral, Vanessa McMahon, Mays Merjaneh, Nancy Morrison, Michael Parkins, Jennifer Pike, April Price, Bradley S. Quon, Joe Reisman, Clare Smith, Mary Jane Smith, Nathalie Vadeboncoeur, Danny Veniott, Terry Viczko, Pearce Wilcox, Richard van Wylick, Garry Cutting, Elizabeth Tullis, Felix Ratjen, Johanna M. Rommens, Lei Sun, Melinda Solomon, Anne L. Stephenson, Emmanuelle Brochiero, Scott Blackman, Harriet Corvol and Lisa J. Strug

Genetics in Medicine (2021) 23:2235–2236; <https://doi.org/10.1038/s41436-021-01281-z>

Correction to: *Genetics in Medicine* **23**: 927–933; <https://doi.org/10.1038/s41436-020-01073-x>; Article published online 26 January 2021

The risk alleles of rs1964986 (PRSS1) and rs959173 (CAV1) should be the C allele for both variants instead of the A and T alleles listed in the paper. The changes have been reflected in both Figure 1 and Table 2 shown below.



Published online: 13 August 2021

The original article has been corrected.

Table 2. Effect sizes (hazard ratios) and the 95% confidence intervals (CIs) fitted using a multivariate Cox PH model in the CGS. Risk allele/risk group noted in parentheses after the listed predictor.

Gene annotation	Predictor	Hazard ratio	95% CI
<i>CFTR</i>	<i>CFTR</i> mutation score	3.02	(2.01, 4.54)
—	Sex (female)	1.48	(1.26, 1.74)
<i>SLC5A8</i>	rs12318809 (G)	1.35	(1.16, 1.57)
<i>CAV1</i>	rs959173 (C)	1.27	(1.10, 1.47)
<i>PRSS1</i>	rs1964986 (C)	1.23	(1.09, 1.38)
<i>SLC26A9</i>	rs4077468 (A)	1.20	(1.07, 1.34)
<i>NRG1</i>	rs7822917 (T)	1.31	(1.16, 1.48)
—	Meconium ileus (MI)	1.29	(1.05, 1.59)
<i>TCF7L2</i>	rs7903146 (T)	1.18	(1.05, 1.34)



Open Access This article is licensed under a Creative Commons Attribution 4.0 International License, which permits use, sharing, adaptation, distribution and reproduction in any medium or format, as long as you give appropriate credit to the original author(s) and the source, provide a link to the Creative Commons license, and indicate if changes were made. The images or other third party material in this article are included in the article's Creative Commons license, unless indicated otherwise in a credit line to the material. If material is not included in the

article's Creative Commons license and your intended use is not permitted by statutory regulation or exceeds the permitted use, you will need to obtain permission directly from the copyright holder. To view a copy of this license, visit <http://creativecommons.org/licenses/by/4.0/>.

© The Author(s) 2021