



© The New York Times (2012)

The psychometric qualities of a short version of the Multidimensional Overprotective Parenting Scale

Basilie Chevrier, Bart Soenens, Grégoire Zimmermann,
Nino Skhirtladze, & Stijn Van Petegem

basilie.chevrier@univ-amu.fr

Parental overprotection

Parental overprotection



Parents' level of protection and involvement that is excessive considering the child's developmental level

(Holmbeck et al., 2002)

- **MOPS = Multidimensional Overprotective Parenting Scale**

- Based on conceptual descriptions of the **various facets of overprotective parenting**
- 35-item self-report questionnaire (5-point Likert-type scale)
- Two higher-order dimensions
 - **Anxious overprotection**
 - **Ego-enhancing overprotection**

(Brummelman et al., 2015; Kins & Soenens, 2013; Levy, 1943)



Anxious overprotection

- Anxious overprotection = Anxiety-driven overprotective behaviours that are age-inappropriate
 - Comprises 5 lower-order dimensions
 - **Anxious rearing**
 - *“My mother/father immediately sees danger whenever I want to do something new”*
 - **Premature problem-solving**
 - *“My mother/father often intervenes in things that I could actually solve myself”*
 - **Infantilization**
 - *“My mother/father treats me like a small child”*
 - **Privacy invasion**
 - *“My mother/father follows everything I do, even when I need time to myself”*
 - **General overprotection**
 - *“My mother/father is all over me”*
 - Conceptually shares some attributes with parental psychological control (e.g., intrusiveness)
 - + Anxious emotional component

(Holmbeck et al., 2002)



Ego-enhancing overprotection

- Ego-enhancing overprotection = Overprotecting the child's self-esteem against potential effects of failure, by boosting the child's ego in excessive ways
 - Comprises 2 lower-order dimensions
 - Excessive praise
 - *"My mother/father thinks that everything I do is extraordinary"*
 - External attribution of failure
 - *"Whenever I'm in trouble because of something I did, my mother/father always thinks that it is the responsibility of someone else"*
 - Conceptually close to parental overevaluation

(Brummelman et al., 2015)



Links with parenting and adjustment

- Parenting

- - related to parental autonomy support and responsiveness
- + related to psychological control
 - Confirmed for anxious overprotection
 - More mixed for ego-enhancing overprotection
 - Results depend upon the informant

(Van Petegem et al., 2020)

(e.g., Kins & Soenens, 2013; Seiffge-Krenke et al., 2018; Titova et al., 2021)

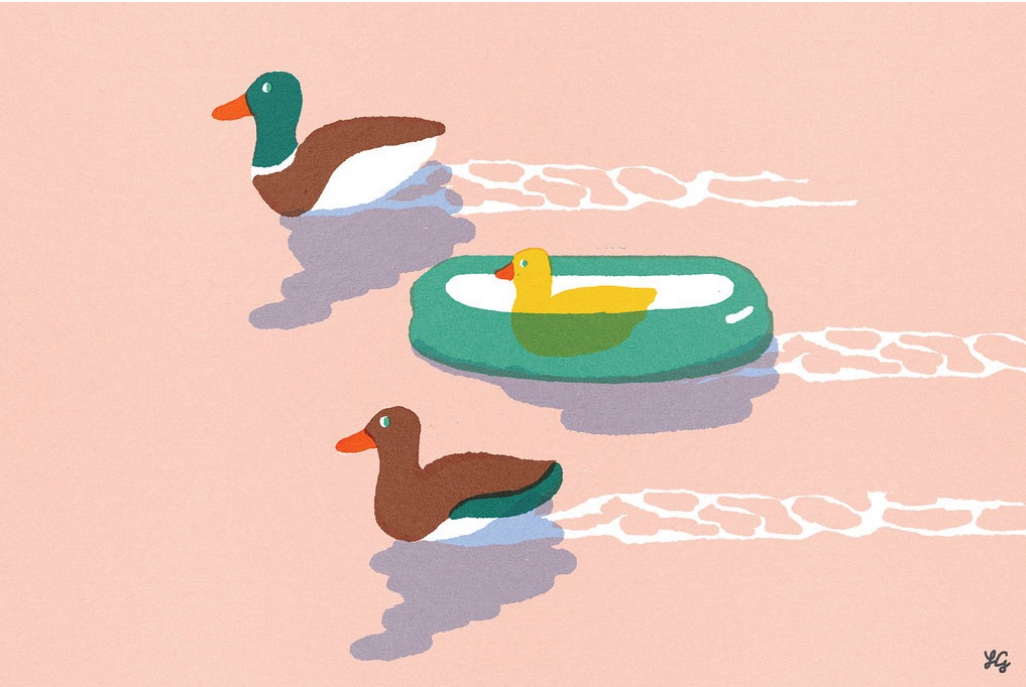
- Adjustment

- Relate to maladjustment = ↘ self-esteem + ↗ depressive and anxiety symptoms

(Kins & Soenens, 2013; Van Petegem et al., 2021)



Objectives













© The New York Times (2019)

- Developed a **short version of the MOPS = S-MOPS**
- Test the properties of the S-MOPS in **different sociocultural contexts**
- Examine the potential of the S-MOPS for research across **adolescents and young adulthood with multi-informant**



Method

Samples

	<i>N</i>						
Sample 1	315		French	Adolescents	49.21%	14.95 (0.77)	Father- and mother-child
Sample 2	377		Dutch	Adolescents and young adults	50.39%	17.15 (0.97)	Father- and mother-child
Sample 3	312		Georgian	Young adults	58.01%	23.50 (3.00)	Mother-child
Sample 4	467		French	Parents of adolescents	60.59%	49.09 (5.62)	Parent-report



Method

Measures

- **Parenting**

- **Autonomy support**

- Samples 1 and 4: Perceived Parental Autonomy Support Scale (Mageau et al., 2015)
- Sample 2: Perception of Parents Scale (Grolnick et al., 1991)

- **Psychological control**

- Samples 1 and 4: Perceived Parental Autonomy Support Scale (Mageau et al., 2015)
- Sample 3: Dependency-oriented and Achievement-oriented Psychological Control Scale (Soenens et al., 2010)

- **Responsiveness**

- Samples 1, 2 and 4: Acceptance subscale of the Child Report of Parent Behaviour Inventory (Schaefer, 1965)

- **Parental overevaluation**

- Sample 4: Parental Overvaluation Scale (Brummelman et al., 2015)



Method

Measures

- **Adjustment**
 - **Social anxiety**
 - Sample 1: Social Anxiety Scale for Adolescents Short Form (Nelemans et al., 2019)
 - **General anxiety**
 - Sample 1: Child Anxiety Related Disorders (Birmaher et al., 1999)
 - Samples 2 and 4: Spielberger State-Trait Anxiety Inventory (Marteau & Bekker, 1992)
 - **Depressive symptoms**
 - Samples 1 and 4: Patient Health Questionnaire depression scale (Kroenke et al., 2009)
 - Sample 2: Center for Epidemiologic Studies Depression Scale (Radloff, 1977)
- **Self-esteem**
 - Sample 1: Self-Perception Profile for Adolescents (Harter, 1988)
- **Life satisfaction**
 - Sample 2: Satisfaction With Life Scale (Diener et al., 1985)



Results

Item selection (using Sample 1)

- Exploratory factor analysis
 - 10 items for anxious overprotection
 - 6 items for ego-enhancing overprotection
- Selection criteria
 - Strength of the factor loadings
 - Absence of cross-loadings
 - Conceptual representation
 - Adequacy for transcultural adaptation

Table 4. Multiple-group confirmatory factor analysis models for testing measurement invariance.

	χ^2	<i>df</i>	RMSEA [90 CI%] (Δ)	CFI (Δ)	TLI	SRMR	<i>p</i>
Configural invariance	488.15	200	.074 [.065, .082]	.935	0.922	.080	-
Metric invariance	499.90	214	.071 [.063, .079] (-.003)	.935 (.000)	0.927	.083	.16
Scalar invariance	531.62	260	.063 [.055, .070] (-.008)	.938 (.003)	0.943	.083	.97
Strict invariance	555.85	276	.062 [.054, .069] (-.001)	.937 (-.001)	0.945	.083	1.00



Results

Item selection (using Sample 1)

Table 1. Results of the exploratory factor analysis on the 35-item MOPS.

	Father		Mother	
	F1	F2	F1	F2
ANXIOUS OVERPROTECTION				
<i>Anxious rearing</i>				
1. My mother/father constantly warns me about bad things that could happen to me.			.30	
8. My mother/father fears for things that might happen when she/he is not nearby.	.39		.51	
15. My mother/father immediately sees danger whenever I want to do something new.	.63		.64	
22. My mother/father points out the potential risks in everything I do.	.33		.49	
29. My mother/father says that without her/him I would probably end up in trouble.	.67		.59	
<i>Premature problem solving</i>				
2. My mother/father tries to solve all of my problems for me without me having to do anything.		.50		.50
9. My mother/father often takes tasks out of my hands without giving me the chance to try them myself first.	.61		.67	
16. My mother/father often intervenes in things that I could actually solve myself.	.63		.60	
23. My mother/father involves herself/himself in my arguments with others (e.g., brother/sister, peers, teachers).	.30		.44	
30. My mother/father arranges a lot of things in my life without asking my opinion.	.58		.58	



Results

Reliability and information reproduction

Table 5. Omega coefficients, corrected correlations, and correlations of the 16- and 35-item MOPS.

Sample	Relationship	35-item version		16-item version		Corrected correlations between original and short dimensions		Correlations between dimensions			
		Anxious	Ego-enhancing	Anxious	Ego-enhancing	Anxious	Ego-enhancing	35-item version	[95% CI]	16-item version	[95% CI]
1	Father-Child	.91	.79	.88	.80	.81***	.85***	.26***	[.111, .391]	.04	[-.088, .200]
	Mother-Child	.92	.79	.88	.77	.82***	.60***	.28***	[.153, .387]	.06	[-.022, .217]
2	Father-Child	.92	.86	.85	.81	.80***	.65***	.50***	[.382, .604]	.40***	[.233, .489]
	Mother-Child	.91	.82	.86	.79	.78***	.66***	.37***	[.254, .463]	.20***	[.064, .305]
3	Mother-Child	.94	.86	.90	.83	.86***	.67***	.55***	[.453, .629]	.41***	[.288, .504]
4	Father-Child	.90	.84	.85	.84	.78***	.69***	.77***	[.689, .872]	.63***	[.509, .717]
	Mother-Child	.91	.82	.85	.85	.76***	.72***	.74***	[.673, .791]	.62***	[.532, .697]

Note. 95% confidence intervals were based on bias-corrected bootstrapping. *** $p < .001$.



Results

Nomological network

Table 6. Results of the confirmatory factor analyses on the 16-item MOPS.

Sample	Relationship	<i>N</i>	χ^2	<i>df</i>	RMSEA [90 CI%]	CFI	TLI	SRMR
1	Father-Child	315	397.96	103	.097 [.087, .107]	.876	0.856	.100
	Father-Child + Cov.errors		293.04	100	.080 [.069, .090]	.919	0.903	.085
	Mother-Child		275.08	103	.073 [.063, .084]	.931	0.919	.080
	Mother-Child + Cov.errors		239.69	100	.067 [.056, .078]	.944	0.932	.073
2	Father-Child	377	475.06	103	.104 [.094, .113]	.883	0.864	.087
	Father-Child + Cov.errors		297.32	100	.077 [.067, .087]	.938	0.926	.067
	Mother-Child		309.59	103	.074 [.065, .084]	.919	0.906	.072
3	Mother-Child	312	386.63	103	.094 [.084, .104]	.912	0.897	.087
	Mother-Child + Cov.errors		285.73	96	.080 [.069, .090]	.941	0.926	.072
4	Father-Child	184	192.03	103	.069 [.053, .084]	.942	0.932	.077
	Mother-Child	283	289.48	103	.080 [.069, .091]	.907	0.891	.083
	Mother-Child + Cov.errors		257.31	102	.073 [.062, .085]	.922	0.908	.079

Note. Cov.errors for Sample 1 = errors of items 12 and 13, 13 and 19, 13 and 26 are allowed to covary. Cov.errors for Sample 2 = errors of items 12 and 19, 12 and 26, 19 and 26 are allowed to covary. Cov. errors for Sample 3 = errors of items 12 and 19, 12 and 26, 12 and 20, 19 and 26, 19 and 20, 26 and 20, 7 and 11 are allowed to covary. Cov.errors for Sample 4 = errors of items 9 and 16 are allowed to covary.



Results

Nomological network

- MOPS and S-MOPS = Very similar associations with the parenting and adjustment variables across all samples

	Anxious overprotection	Ego-enhancing overprotection
Parenting		
Autonomy support	-	+
Responsiveness	-	+
Psychological control	+	+
Parental overevaluation		+



Results

Nomological network

- MOPS and S-MOPS = Very similar associations with the parenting and adjustment variables across all samples

	Anxious overprotection	Ego-enhancing overprotection
Adjustment		
Social anxiety	+	
General anxiety	+	-
Depressive symptoms	+	- or +
Self-esteem	-	+
Life satisfaction	-	+



Discussion

- S-MOPS = 16 items selected
- Psychometrics properties of the S-MOPS similar to the ones of the MOPS
 - High reliability
 - Information reproduction
 - Nomological network with a stable two-factor structure and similar association with parenting and adjustment

S-MOPS = Valid instrument

- Potential of the S-MOPS for cross-national research
- Good psychometric properties for adolescents and young adults

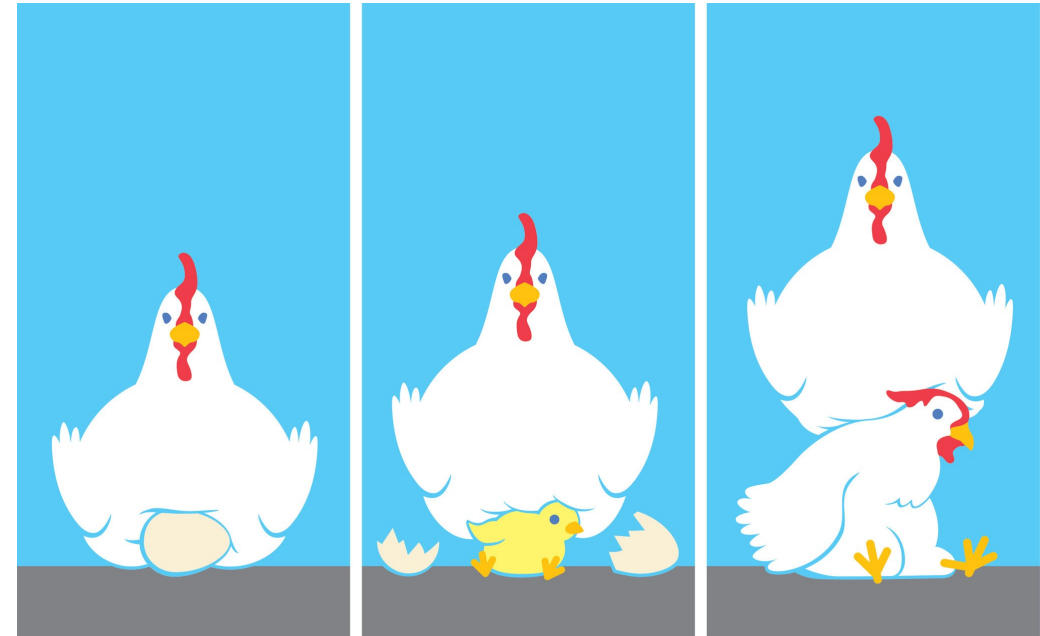


Discussion

Limitations and perspectives

- Explicitly test invariance across developmental stages, across informant and across cultures
- Assessing overprotection among specific population such as family with separate parents?
- Useful in childhood?

S-MOPS = Promising brief instrument for measuring parental overprotection



© The New York Times (2013)





Thank you for your attention

The psychometric qualities of a short version of the Multidimensional Overprotective Parenting Scale

Questions or suggestions?



Chevrier, B., Soenens, B., Zimmermann, G., Skhirtladze, N., & Van Petegem, S. (2022). The psychometric qualities of a short version of the Multidimensional Overprotective Parenting Scale. *European Journal of Developmental Psychology*, Advance online publication. <https://doi.org/10.1080/17405629.2022.2079630>

Fundings



**Swiss National
Science Foundation**



European Research Council
Established by the European Commission