



HAL
open science

Thermal characterization and thermal effect assessment of biofouling around a dynamic submarine electrical cable of floating offshore wind turbine

Ziad Maksassi, Bertrand Garnier, Ahmed Ould El Moctar, Franck Schoefs

► To cite this version:

Ziad Maksassi, Bertrand Garnier, Ahmed Ould El Moctar, Franck Schoefs. Thermal characterization and thermal effect assessment of biofouling around a dynamic submarine electrical cable of floating offshore wind turbine. 13th Asian Thermophysical Properties Conference - ATPC 2022, Sep 2022, Sendai, Japan. hal-03826229

HAL Id: hal-03826229

<https://hal.science/hal-03826229v1>

Submitted on 24 Oct 2022

HAL is a multi-disciplinary open access archive for the deposit and dissemination of scientific research documents, whether they are published or not. The documents may come from teaching and research institutions in France or abroad, or from public or private research centers.

L'archive ouverte pluridisciplinaire **HAL**, est destinée au dépôt et à la diffusion de documents scientifiques de niveau recherche, publiés ou non, émanant des établissements d'enseignement et de recherche français ou étrangers, des laboratoires publics ou privés.

ATPC
2022
SENDAI

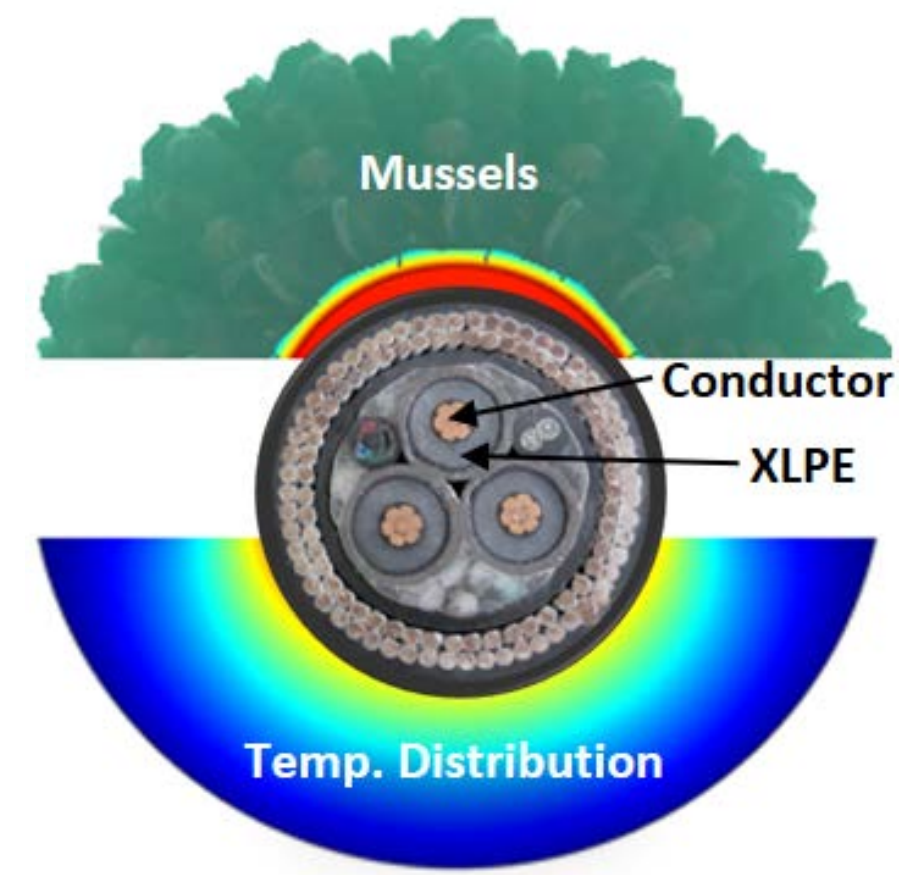
September 26 (Mon) - 30 (Fri), 2022

Thermal characterization and thermal effect assessment of biofouling around a dynamic submarine electrical cable of floating offshore wind turbine.

Ziad MAKASSI(1,2), Bertrand Garnier(1), Ahmed Ould El MOCTAR(1), Franck SCHOEFS(2)

1 LTeN: Laboratoire thermique énergétique de Nantes, 2 GeM: Institut de recherche en génie civil et mécanique

Context



Introduction and problematic

- High voltage dynamic cable is a key component in the power transmission system of floating offshore wind turbine
- High voltage dynamic cables are dimensioned to remain below 90°C into the conductor and XLPE in normal operating conditions.
- Growth of biofouling, particularly mussels can modify the heat transfer around the cable.
- If the temperature of the conductor increases above 90°C, then the XLPE (cross-linked polyethylene) insulation system is damaged and the electrical conductor conductivity will decrease.
- Modelling the thermal effect of mussels on the high voltage dynamic cable is important however the thermal characteristics of mussels are unknown.

Objective

- Thermal characterization of different types of mussels (Juvenile, mix (Juvenile & Adult) and Adult) by estimating the effective thermal conductivity of mussels k_{biof} and the heat transfer coefficient of the water around the mussels h_w .
- Modelling the thermal effect of different ages of mussels on the dynamic submarine electrical cable.

Methodology

Stationary method (Analytical)

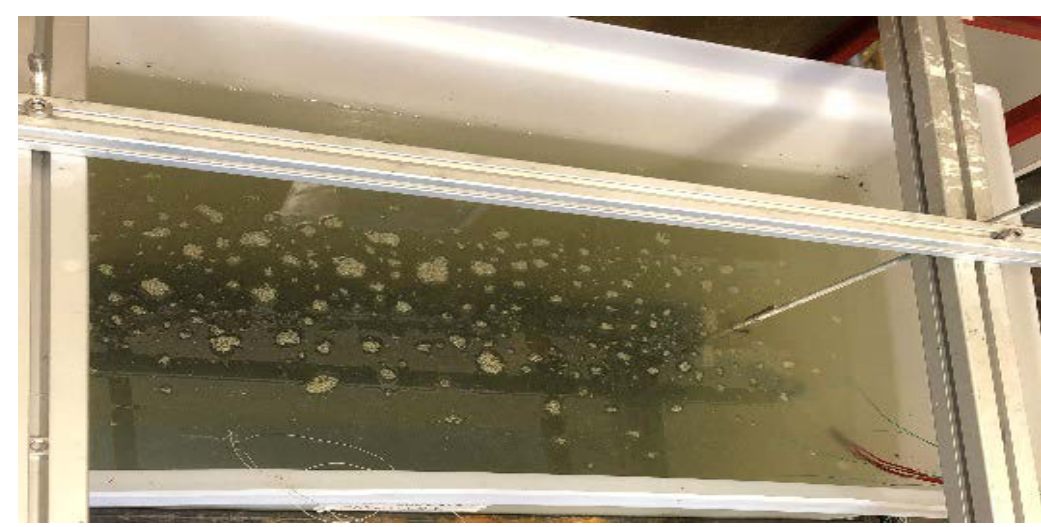
Uniform colonization of mussels around the experimental tube

Mussel's fixation on the experimental tube



Mussels
Steel net
(1cm mesh)

Measurement in a water tank filled with sea water



Thermal conductivity of biofouling (Fourier's law):

$$\lambda_{biof}(W/m.K) = \frac{\ln\left(\frac{r_e}{r_i}\right) * \dot{Q}_r}{2\pi * L * (T_{av1} - T_{av2})}$$

Heat transfer coefficient of water around the mussels (Newton's law):

$$h_{water}(W/m^2.K) = \frac{\dot{Q}_r}{2\pi * r_e * L * (T_{av2} - T_w)}$$

* Tav1: average of (T1, T2 and T3)
Tav2: average of (T4, T5 and T6)

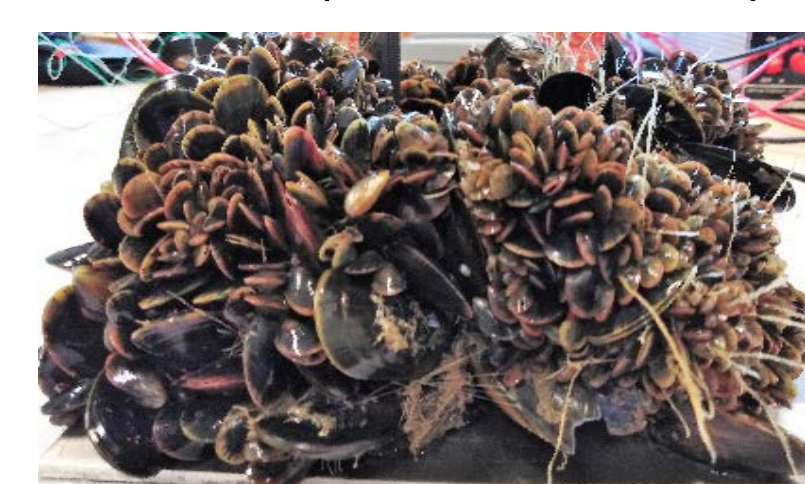
Modelling the thermal effect of mussels (Finite Elements)

Juvenile (3-6 months)



Surface: Temperature (degC)

Mixed (6-12 months)

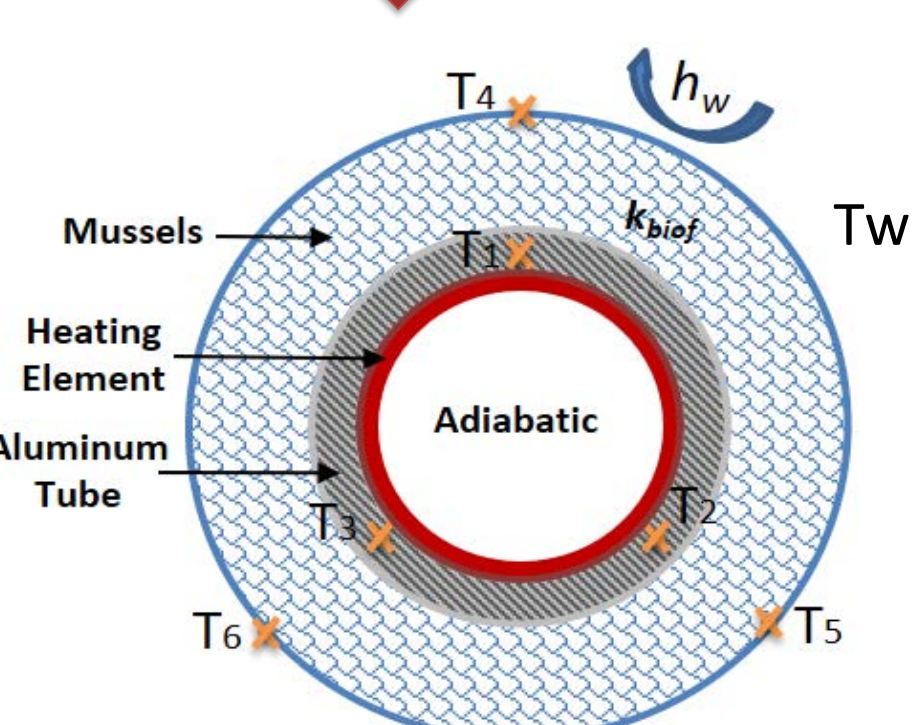
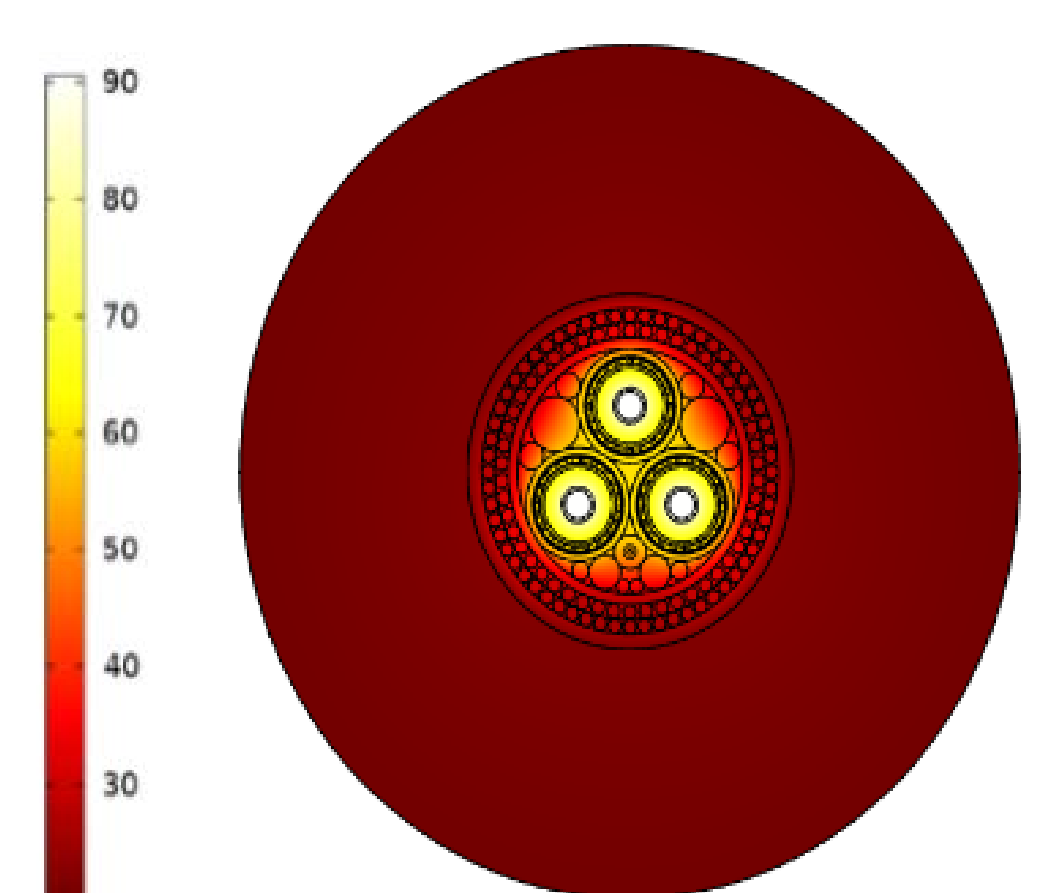
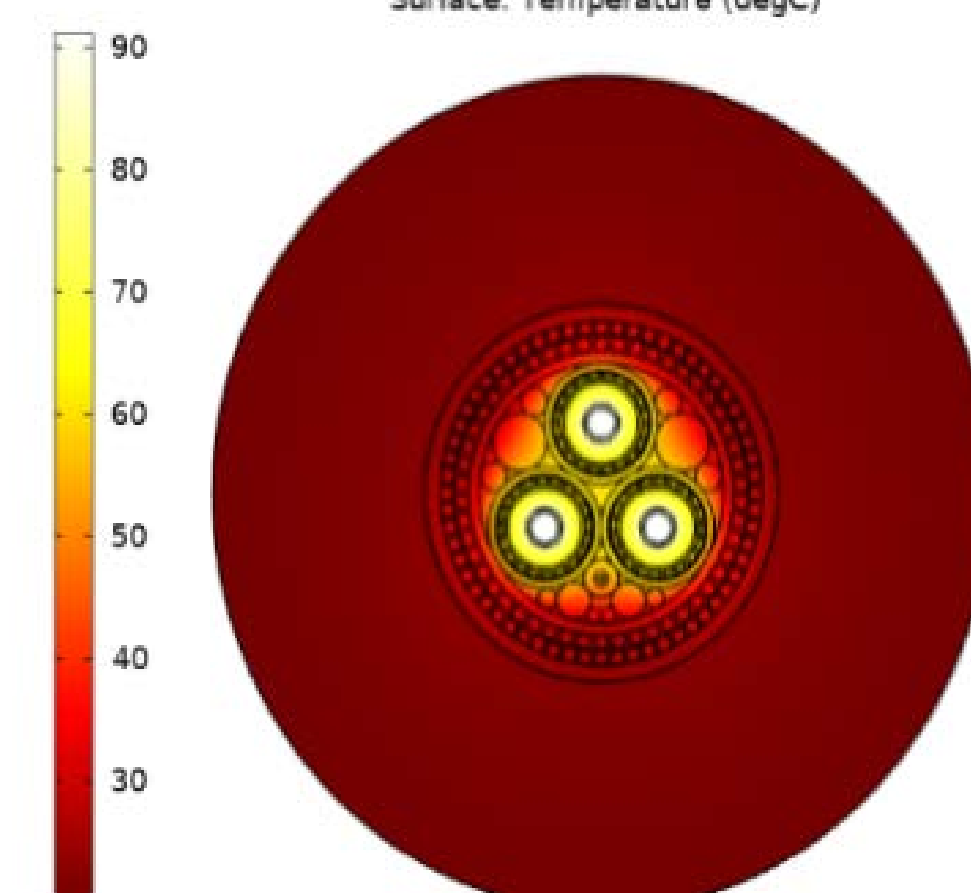
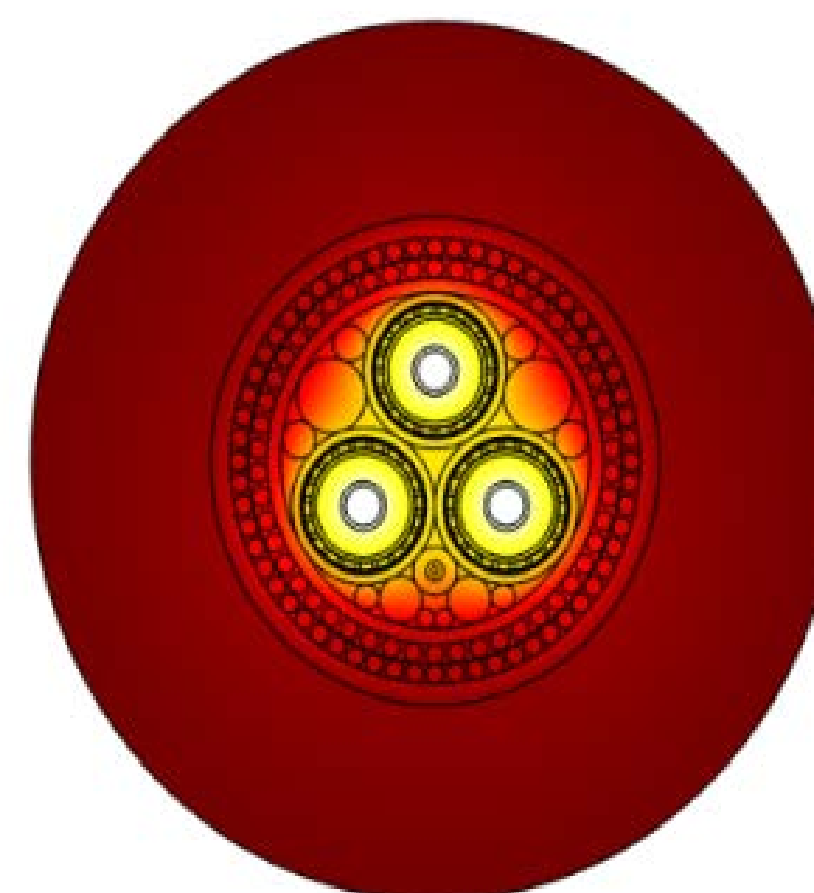


Surface: Temperature (degC)

Adult (12-18 months)



Surface: Temperature (degC)



Middle cross-section of the experimental tube covered with uniform colonization of mussels.

Results

Thermal characterization of different ages of mussels – Uniform colonization.

- 1 Juvenile mussels
- 2 Mix(Adult & Juvenile)mussels
- 3 Adult mussels



Effective thermal conductivity of the mussels and heat transfer coefficient of the water around them.

Mussels type	Porosity (ϕ)	k_{biof}	Absolute uncertainty	Relative uncertainty	h_w	Absolute uncertainty	Relative uncertainty
	%						
Juvenile	15	4.4	± 0.4	9	3395	± 1123	33
Mix (juvenile & adult)	18	8	± 0.52	6.5	873	± 164	19
Adult	22.6	12.8	± 0.97	7.6	2682	± 1003	37

$$k_{juvenile} < k_{mix} < k_{adult}$$

Conclusion

- Effective thermal conductivity of mussels depends on the age mussels (Juvenile, mix or adult) which has different percentage of water porosity.
- Convective resistance is smaller than the conductive resistance.
- Juvenile mussels have the smallest effective thermal conductivity compared to the mix (juvenile and adult) and adult mussels. Therefore, it has the highest thermal effect on the submarine electrical cable.

Thermal effect of different ages of mussels on the dynamic submarine electrical cable.

