



HAL
open science

Sub-parsec resolution cosmological simulations of star-forming clumps at high redshift with feedback of individual stars

F Calura, A Lupi, Joakim A Rosdahl, E Vanzella, M Meneghetti, P Rosati, E Vesperini, E Lacchin, R Pascale, R Gilli

► To cite this version:

F Calura, A Lupi, Joakim A Rosdahl, E Vanzella, M Meneghetti, et al.. Sub-parsec resolution cosmological simulations of star-forming clumps at high redshift with feedback of individual stars. *Monthly Notices of the Royal Astronomical Society*, 2022, 516 (4), pp.5914-5934. 10.1093/mnras/stac2387. hal-03817526

HAL Id: hal-03817526

<https://hal.science/hal-03817526v1>

Submitted on 17 Oct 2022

HAL is a multi-disciplinary open access archive for the deposit and dissemination of scientific research documents, whether they are published or not. The documents may come from teaching and research institutions in France or abroad, or from public or private research centers.

L'archive ouverte pluridisciplinaire **HAL**, est destinée au dépôt et à la diffusion de documents scientifiques de niveau recherche, publiés ou non, émanant des établissements d'enseignement et de recherche français ou étrangers, des laboratoires publics ou privés.

Sub-pc resolution cosmological simulations of star-forming clumps at high redshift with feedback of individual stars

F. Calura^{1*}, A. Lupi^{2,3}, J. Rosdahl⁴, E. Vanzella¹, M. Meneghetti¹, P. Rosati⁵,
E. Vesperini⁶, E. Lacchin^{1,7}, R. Pascale¹, R. Gilli¹

¹INAF, Osservatorio Astronomico di Bologna, Via Gobetti 93/3, 40129 Bologna, Italy

²Dipartimento di Fisica “G. Occhialini”, Università degli Studi di Milano-Bicocca, Piazza della Scienza 3, I-20126 Milano, Italy

³INFN, Sezione di Milano-Bicocca, Piazza della Scienza 3, I-20126 Milano, Italy

⁴Univ Lyon, Univ Lyon1, Ens de Lyon, CNRS, Centre de Recherche Astrophysique de Lyon UMR5574, F-69230, Saint-Genis-Laval, France

⁵UDipartimento di Fisica e Scienze della Terra, Università degli Studi di Ferrara, via Saragat 1, I-44122 Ferrara, Italy

⁶Department of Astronomy, Indiana University, Bloomington, IN 47401, USA

⁷Dipartimento di Fisica e Astronomia dell’Università degli Studi di Bologna, via P. Gobetti 93/2, 40129 Bologna, Italy

17 August 2022

ABSTRACT

We introduce a new set of zoom-in cosmological simulations with sub-pc resolution, intended to model extremely faint, highly magnified star-forming stellar clumps, detected at $z = 6.14$ thanks to gravitational lensing. The simulations include feedback from individual massive stars (in both the pre-supernova and supernova phases), generated via stochastic, direct sampling of the stellar initial mass function. We adopt a modified ‘delayed cooling’ feedback scheme, specifically created to prevent artificial radiative loss of the energy injected by individual stars in very dense gas ($n \sim 10^3 - 10^5 \text{ cm}^{-3}$). The sites where star formation ignites are characterised by maximum densities of the order of 10^5 cm^{-3} and gravitational pressures $P_{\text{grav}}/k > 10^7 \text{ K/cm}^3$, corresponding to the values of the local, turbulent regions where the densest stellar aggregates form. The total stellar mass at $z = 6.14$ is $3.4 \times 10^7 M_{\odot}$, in satisfactory agreement with the observed stellar mass of the observed systems. The most massive clumps have masses of $\sim 10^6 M_{\odot}$ and half-mass sizes of $\sim 100 \text{ pc}$. These sizes are larger than the observed ones, including also other samples of lensed high-redshift clumps, and imply an average density one orders of magnitude lower than the observed one. In the size-mass plane, our clumps populate a sequence that is intermediate between the ones of observed high-redshift clumps and local dSph galaxies.

Key words: galaxies: formation – hydrodynamics – methods: numerical – galaxies: star formation

1 INTRODUCTION

Deep high-redshift studies performed with the Hubble Space Telescope (HST) have made possible the detection of extremely faint objects, with magnitudes as faint as $M_{\text{UV}} - 14$ up to at redshifts $z = 6\text{--}8$ (e.g. Vanzella et al. 2017a; Livermore et al. 2017). Some of these systems present very low stellar masses, down to a few $10^6 M_{\odot}$ (e.g., Karman et al. 2017). However, the nature and classification of these systems are unclear: are they dwarf galaxies, HII galaxies (Terlevich et al. 2016), super star clusters, extremely compact star clusters or clumps? Answering to these questions requires estimates of a few basic physical quantities such as their stellar mass, star formation rate (SFR), and size of these systems. In blank fields, these

aspects cannot be investigated as faint star-forming galaxies generally appear as very blue, point-like sources, due to the limited spatial resolution of current instruments that can only probe their properties down to a few 100 pc (Elmegreen & Elmegreen 2017) at $z > 2$. Gravitationally lensed fields, however, offer a unique opportunity to measure physical properties such as light profiles and effective radii, even for very faint sources. Much progress has recently been driven by deep observations of massive galaxy clusters, carried out in the context of large HST programmes, such as, e.g., the Hubble Frontier Fields (HFF) survey (Lotz et al. 2017). In these investigations, by exploiting gravitational lensing, clusters of galaxies are used as cosmic telescopes to look deeply into the distant Universe. High-precision lensing models of galaxy clusters can be built using a large number of multiply lensed sources, which generally span a large redshift range (Meneghetti et al. 2017; Bergamini et al. 2019,

* E-mail: francesco.calura@inaf.it

2020). Thanks to strong lensing events generated by giant lenses located along the line of sight, distant sources can be magnified by large factors (from a few to 20, or even more, [Vanzella et al. 2017a](#); [Bouwens et al. 2021](#)), enabling us to analyse them with very high spatial resolution, large S/N and to probe their structural parameters down to scales of a few tens of parsec ([Vanzella et al. 2019](#)). In this framework, determining the source redshift is key. In this regard, remarkable progress has been made in recent years thanks to the integral field spectrograph Multi-Unit Spectroscopic Explorer (MUSE) on the Very Large Telescope ([Bacon et al. 2010](#)), which has enabled the spectroscopic confirmation of hundreds of multiple images in the redshift range $2 \leq z \leq 7$. These methods allowed us to determine absolute physical quantities such as luminosities, sizes, stellar masses, and star formation rates of clustered star-forming regions up to $z > 6$ ([Vanzella et al. 2017a, 2019](#)). Recent deep MUSE observations of lensed fields enabled a census of tiny star-forming complexes ([Vanzella et al. 2021a](#)), allowing us to peer into their internal structure, unveiling clumps with typical sizes of ~ 100 pc ([Mestric et al. 2022](#)) and, in some cases, even breaking the clumps into star-forming complexes matching the scales of bound star clusters (≤ 20 pc).

To interpret appropriately such an impressive, new wealth of data, a solid understanding of the properties of faint sources and their environment is needed. This requires improving our theoretical understanding of these systems and their evolutionary link with their local, more evolved counterparts. To this purpose, suitable instruments are hydrodynamic zoom-in simulations of the first galaxies, that include an accurate description of several fundamental physical processes (e. g., [Wetzel et al. 2016](#); [Sawala et al. 2016](#); [Grand et al. 2017](#); [Agertz et al. 2020](#)). In this approach, a low resolution background realization of the large-scale structure surrounds a high-resolution region, centered on the halo of interest and which allows for a detailed implementation of the baryonic physics, including star formation and stellar feedback ([Vogelsberger et al. 2020](#) and references therein). However, in most cases, current state-of-the-art simulations reach a spatial resolution of the order of ~ 10 pc and maximum dark matter particle mass resolution of $\sim 10^3 M_\odot$, therefore unsuited to probe the internal structure of compact clumps in early galaxies.

In order to resolve the internal structure of the clumps, the spatial resolution must be at least of pc- (or sub-pc) scale. A sub-pc resolution is recommended not only to resolve the sub-structures, but also for a proper description of the turbulent star-forming gas. In fact, the filamentary structure of local star-forming regions probed by infrared observations have typical sizes of ~ 0.1 pc ([Arzoumanian et al. 2011](#)) and are thought to be formed by fragmentation of the parent molecular cloud induced by turbulent shocks ([Padoan et al. 2001](#)). Turbulence is a multi-scale process, in which large-scale motions of the interstellar medium (ISM) transfer energy down to small scales, i.e. of the order of the size of the filaments (e. g., [Bournaud et al. 2010](#)). As a consequence of this, a proper description of the star-forming gas requires simulations spanning a large dynamic range in physical scale ([Renaud et al. 2013](#)). The capability to resolve the star-forming gas down to sub-pc scales, in turn, requires a proper modelling of the properties of the newly formed stars. In cosmological simulations, the stellar component is generally modelled by means of particles, aimed to represent stellar populations. In the assumption that a stellar particle samples the entire stellar initial mass function (IMF), their properties such as the mass, energy and metals restored into the interstellar medium (also known as 'feedback'), are computed via IMF-averaged prescriptions. This approximation breaks down at high spatial (or mass-) resolution, where stochastic

variations in stellar populations become non-negligible ([Sormani et al. 2017](#); [Smith 2021](#)), or when the available gas for star formation in a cell amounts to a few $10 M_\odot$ only, i.e. in cases in which the entire IMF is not sampled. Such cases require a detailed modelling of individual stars. However, since resolving the collapse of individual stars would require a spatial resolution currently unfeasible in cosmological simulations for stellar-evolution timescales (ranging from a few Myr to a Hubble time), an alternative, valid approximation is the stochastic IMF-sampling ([Sormani et al. 2017](#); [Wall et al. 2020](#)). In order to be able to resolve the formation of the star-forming clumps, from their birth and in a fully cosmological context, in this paper we present cosmological hydrodynamic simulations with sub-pc resolution and feedback of individual stars, modelled through Poisson sampling of the IMF. These simulations are the first within a new project aimed at SIMulating the Environment where Globular clusters Emerged (SIEGE). This work is the first of a series, where we present the physical ingredients of the model and the implementation of the most fundamental baryonic physics recipes. We also describe our first results on the structural properties of the simulated systems, comparing them to the observational properties of the star-forming clumps detected at high redshift.

To our knowledge, ours represents one of the first attempts to model the feedback of single stars at sub-pc resolution, in a cosmological simulation and with a grid code. Previous attempts to model the feedback of individual massive stars in a non-cosmological framework include the isolated mergers studied by [Lahen et al. \(2020\)](#), dwarf galaxies ([Emerick et al. 2019](#); [Gutcke et al. 2021](#)) and a Milky Way-like galaxy ([Andersson et al. 2020](#)). Performing cosmological simulations in this extremely high resolution regime has recently become feasible, although the attempts performed so far are still very rare ([Gutcke et al. 2022](#) and references therein). The paper is organised as follows. In Sect. 2, the setup of simulations and the basic model ingredients are presented. In Sect. 3, we present and discuss our results and in Sect. 4, we draw our conclusions. Throughout this paper we adopt a flat cosmological model with matter density parameter $\Omega_m = 0.276$ and Hubble constant $H_0 = 70.3 \text{ km s}^{-1} \text{ Mpc}^{-1}$ ([Sharov & Vorontsova 2014](#); [Omori et al. 2019](#)).

2 SIMULATION SETUP

The simulation is aimed at modelling a system with features similar to an extended star-forming complex at $z = 6.14$ strongly magnified by the galaxy cluster MACS J0416.1-2403, which includes several clumps, distributed across a wide region ([Vanzella et al. 2019](#); [Calura et al. 2021](#)). The accurate model of the gravitational lens magnifying these systems was tested very carefully, and was able to accurately account for the positions of a rich set of spectroscopically confirmed multiple images in the redshift range $3 \leq z \leq 6.5$ ([Bergamini et al. 2020](#)). The UV emission is generated by extremely faint systems, characterised by intrinsic magnitudes $m_{1500} = 28 - 33$. The total stellar mass of the star-forming complex is of a few $10^7 M_\odot$. The main components of the complex are D1 and T1, shown in Fig. 1. Other individual star-forming knots are present with intrinsic UV magnitudes between 30 and 32, intrinsic sizes between 10 and 50 pc and ages of 1-10 Myr, obtained from the analysis of their spectral energy distribution. The sources are located in a region of varying, high magnification (typically $\mu > 15$). D1 has a stellar mass of $2.2 \times 10^7 M_\odot$, intrinsic (de-lensed) UVB magnitude 29.60 and size of 44 pc ([Vanzella et al. 2019](#)). T1 has

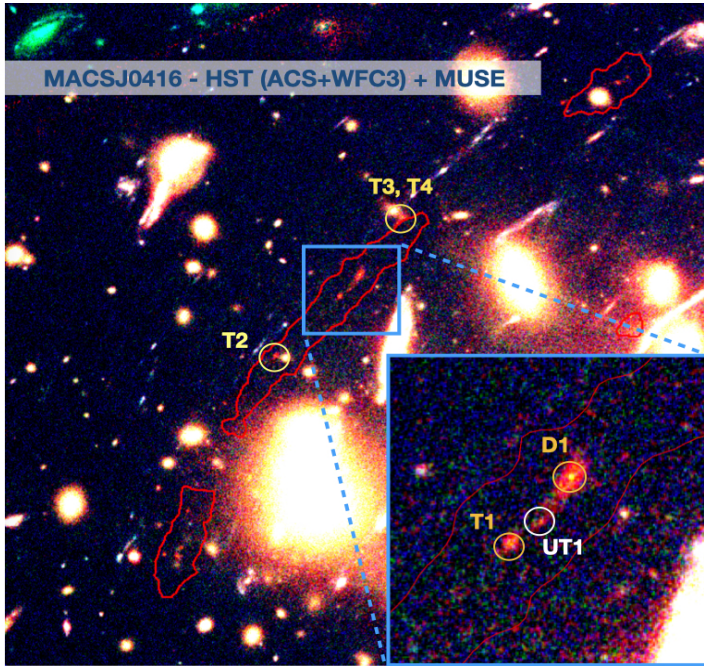


Figure 1. Colour-composite image of the field containing the lensed, spectroscopically confirmed star forming complexes at $z = 6.14$ magnified by the galaxy cluster MACS J0416 (Vanzella et al. 2019). The extended Lyman- α arcs detected with MUSE at $2 - \sigma$ are shown by the red contours. The systems D1 and T1 are shown in the bottom-right inset. A structure is visible between D1 and T1, including a very faint star-forming knot, dubbed UT1, indicated with the white circle. Other detected sources include T2, T3, T4 and others (Vanzella et al. 2021b), with intrinsic apparent magnitudes in the HST F105W band between 30 and 32.

an intrinsic UV magnitude of 31.3 and is one of the faintest spectroscopically confirmed star-forming objects ever identified at high redshift. Its stellar mass is $2 \times 10^6 M_{\odot}$ and its size is < 30 pc (Vanzella et al. 2017a). In the available images obtained with HST, D1 appears considerably more extended than T1 and is characterised by a nucleated star-forming region surrounded by a diffuse component. D1 and T1 are separated by $1.7''$, corresponding to a physical distance of ~ 500 pc assuming a magnification $\mu = 20$ (Vanzella et al. 2017a). The unique D1+T1 system provides deep insight into an extended star-forming region detected at the peak of reionization, in which a high magnification allows us to probe the complexity of its substructures.

We model the evolution of such system by means of a zoom-in cosmological simulation performed with the adaptive mesh refinement hydrodynamic code RAMSES (Teyssier 2002). Gas evolution is computed using a second-order Godunov scheme for the Euler equations. The Euler equations are solved using the second-order MUSCL scheme with an HLLC Riemann solver, and the Poisson equation is computed using a multi-grid method (Guillet & Teyssier 2011). Collisionless stellar particles are allowed to form, and their trajectories are computed by means of a Particle-Mesh solver, as are the trajectories of dark matter (DM) particles, with maximum mass resolution of $200 M_{\odot}$. In the grid-based N-body scheme used by RAMSES, i. e. the standard particle mesh method with adaptive mesh refinement, at each grid level, the gravitational softening length is equal to the local grid size, without any distinction between stars and DM.

In our simulations, we aim at pushing the spatial resolution to the sub-pc scale. The initial baryonic grid maximum spatial resolution is $1.2 h^{-1}$ kpc comoving, corresponding to maximum refinement level 12 and computed by means of a variable-based refinement strategy. We allow for 9 additional refinement levels (with

the cell width decreasing by half for each additional level), with a Lagrangian mass threshold-based criterion.

A cell is refined if it is not at the maximum level and its mass exceeds $8m_{sph}$, where $m_{sph} = \Omega_b / \Omega_m 2^{-3l} = 32 M_{\odot}$, in which $\Omega_b = 0.045$ is the baryon density parameter and $l = 12$ is the maximum grid level of the initial conditions. This allows us to reach a maximum physical resolution of $0.3 h^{-1}$ pc in the densest regions at $z = 6.14$, corresponding to maximum refinement level $l_{max}=21$. To check the numerical converge, we also run another lower resolution simulation with maximum refinement level 19, corresponding to a minimum cell width of 1.9 pc at $z = 6.14$. Besides star formation, our simulations include radiative cooling and feedback from individual asymptotic giant branch stars (AGB) and massive stars (MS) in the forms of stellar winds and supernova explosions. The high resolution of our simulation requires the feedback of single stars (and not of stellar particles, i. e. particles representing entire stellar populations) to be properly taken into account. To this purpose, our implementation of star formation is designed in order to account for the formation of single stars, in an appropriate range of mass. In the following, we will describe the methods used to perform our task.

In our simulations, radiative cooling is modelled through the RAMSES native implementation, i. e. as due to hydrogen, helium and metals (e. g., Few et al. 2014). The native cooling implementation of RAMSES is based on equilibrium-thermochemistry, and is generally suited to study the dense star-forming gas (Agertz et al. 2013; Fichtner et al. 2022). Cooling and heating rates of the gas are functions of temperature, density, redshift, metallicity, and the abundances of each primordial ion species, n_{HI} , n_{HII} , n_{HeI} , n_{HeII} , and n_e . In RAMSES, photoionization equilibrium is assumed, in which the primordial ion abundances are functions of temperature, density, and redshift, calculated with a simple iterative process that involves equating the rates of photo-ionization, collisional ioniza-

tion and recombination. These rates are pre-computed and stored in tables every coarse time-step in different bins of temperature and hydrogen number density $n_H = X \rho / m_H$, where ρ is the gas density, m_H is proton mass and X is the hydrogen mass fraction, set to the constant value of 0.76 (for further details, see [Rosdahl 2012](#)). A homogeneous, redshift-dependent ionizing UV background is also assumed ([Haardt & Madau 1996](#)).

In our simulations, star formation begins at $z \simeq 16$, in good agreement with other models that include more sophisticated thermal modelling (e. g., [Maio et al. 2009](#); [Rosdahl et al. 2018](#)). After the formation of the first stars, the ISM is quickly polluted with metals and the cooling becomes dominated by the metal cooling rates, in general much higher than primordial H2 cooling rates (e. g., [Rosdahl 2012](#), [Agertz et al. 2013](#)). We assume a temperature floor of $T_{\text{floor}} = 100$ K and an initially metal-free gas.

In our simulations, we do not consider the effects of pop III stars. In some works, their contribution to primordial metal enrichment is modeled directly ([Wise et al. 2012](#); [Gutcke et al. 2022](#)). Alternately, an homogeneous, initial metallicity floor (typically of metallicity $10^{-4} Z_{\odot}$) is assumed to compensate for the lack of their modelling. The early feedback from PopIII stars is an interesting subject, but due to the large uncertainty in their initial mass function and metallicity transition, their inclusion will imply the study of an additional set of free parameters, which we prefer to skip in this presentation paper of our new simulations.

2.1 Initial Conditions

We need to find a suitable DM halo to host a system with a comparable stellar mass as the D1+T1 system at $z = 6.14$. Very few constraints exist on the stellar-to-halo mass relation for low-mass halos ($M < 10^{11} M_{\odot}$) at these redshifts, where the extant studies find significantly different results ([Sun & Furlanetto 2016](#); [Rodríguez-Puebla et al. 2017](#); [Behroozi et al. 2019](#); [Ma et al. 2019](#)).

With the awareness that our DM halo lies across the edge of the existing relations at these redshifts, a stellar mass of a few $10^7 M_{\odot}$ is expected to correspond to a DM mass of \sim a few $10^{10} M_{\odot}$ ([Behroozi et al. 2019](#) and references therein). Such halo mass is not particularly large and rather frequent even at high redshift. For this reason, a small box is enough to guarantee the presence of at least one of these objects within the simulated domain.

It is worth stressing that the choice of a small volume is key for reaching a sub-pc resolution at the final redshift of our simulation. A comoving volume of 5 Mpc h^{-1} is thus ideal for accomplishing our task. The initial conditions (ICs) are generated at $z = 100$ by means of the MUSIC software ([Hahn & Abel 2011](#)). To define the zoom-in region and increase resolution up to the desired level, we follow the approach described in [Fiacconi et al. \(2017\)](#) and [Lupi et al. \(2019\)](#), which consists of various steps.

(i) First, the entire periodic box is covered with 64^3 root cells and a coarse-grid, N-body, DM-only simulation is run to $z = 6.14$.

(ii) At this stage, all the halos within the box are identified by means of the HOP halo finder ([Eisenstein & Hut 1998](#)). The main algorithm behind HOP is basically designed to connect each particle to other nearby particles in the direction of increasing density. This is performed by assigning a density to every particle, using an adaptive kernel with a length scale set by the distance to a set of nearest analogues. After running HOP, we obtain a list of suitable halos and focus on the ones with more than 100 particles. After that, we select an isolated halo located in the central regions of the box with suitable features, i.e. mass of $2 - 5 \times 10^{10} M_{\odot}$ and not in the process

of merging. We also ensure that no other DM halo with comparable mass is present within a sphere with radius of 3 times R_{vir} . Here, the quantity R_{vir} is the virial radius. This quantity is defined as the physical size of a region within which the matter density is $\Delta(z) \rho_c(z)$, where $\rho_c(z)$ is the critical density of the Universe and $\Delta(z)$ is the z -dependent virial overdensity, obtained by means of the fitting formula of Bryan & Norman (1998; see also [Barkana & Loeb 2001](#)). The virial mass of the halo is thus $M_{\text{vir}} = \frac{4}{3} \pi \Delta(z) \rho_c(z) R_{\text{vir}}^3$ and, for our selected halo, it is $\sim 4 \times 10^{10} M_{\odot}$ at $z = 6.14$.

All the DM particles belonging to the selected halo are flagged and traced back in time to the ICs. Subsequently,

(iii) we increase the resolution of the ICs, adding two refinement levels to the Lagrangian region surrounding the previously flagged DM particles, and we rerun the DM-only simulation. We then repeat the halo finding procedure (ii) and step (iii), adding two more refinement levels in a convex hull region around the flagged DM particles and re-running the DM-only simulation. As a result, we initially add six additional levels of refinement above the starting base cube in the zoom-in region. We performed a further full, high-resolution DM-only test in order to ensure that the procedure described above allows us to maintain a fraction of contaminating particles below 0.1 percent. The initial number of DM particles in our simulations is 2×10^8 . After this last test, the ICs are recomputed with the final inclusion of baryons.

2.2 Star formation and IMF sampling

We assume that star formation can occur in cells with gas temperature $T < 2 \times 10^4$ K. The gas, characterised by density ρ , can be converted into stars with density ρ_* according to:

$$\dot{\rho}_* = \frac{\rho}{t_*}, \quad (1)$$

i.e. according to the [Schmidt \(1959\)](#) law. The star formation timescale t_* is proportional to the local free-fall time t_{ff} , and computed as

$$t_* = t_{\text{ff}} / \epsilon_{\text{ff}}, \quad (2)$$

where $t_{\text{ff}} = \sqrt{3 \pi / 32 G \rho}$ and $\epsilon_{\text{ff}} = 0.1$ is the star formation efficiency per free-fall time, consistent with direct observational estimates of this quantity in the most massive, local molecular clouds ([Agertz & Kravtsov 2015](#); [Murray 2011](#)). Moreover, by means of cosmological hydrodynamic simulations of the progenitors of Milky Way-sized galaxies, [Agertz & Kravtsov \(2015\)](#) showed how such a high star formation efficiency provides a good match to several observables at different redshifts, including the derived star formation histories, the stellar mass-gas metallicity relation and its evolution, the Kennicutt-Schmidt relation and the stellar mass - DM halo relation. More recently, [Grisdale et al. \(2019\)](#) demonstrated how high efficiencies $\epsilon_{\text{ff}} = 0.1$ on scales of parsecs provides a close match to the observed efficiencies on scales of individual molecular clouds.

We allow for no more than 90% of the gas in the cell to be turned into stars. This condition implies a minimum density threshold for star formation ([Yaghoobi et al. 2022](#)):

$$\rho_{\text{thr}} = \frac{m_*}{0.9(\Delta x)^3}, \quad (3)$$

where the quantity m_* represents the base star particle mass. In RAMSES, one sets the value of this quantity and the total particle mass in a cell will be a multiple N of m_* , determined by means of a Poisson sampling method as described in various papers (e. g., see eq. 6 of [Rasera & Teysier 2006](#)). In our case, we assume

$m_* = m_{\text{sph}}$, whereas Δx is the width of the maximum resolution cell. This corresponds to a typical value for the particle density threshold of $\sim 10^5 \text{ cm}^{-3}$.

To justify our adopted star formation threshold, a note on artificial fragmentation is in order. Together with the assumption that star formation occurs at $T < 2 \times 10^4 \text{ K}$, this SF threshold creates conditions in which the Jeans length is almost always marginally resolved. This is visible from the phase diagrams shown in Fig. B1, where we quantify the number of cells with under-resolved Jeans length.

The problem of artificial fragmentation is common to various works in which very high densities and cold gas temperatures are achieved. Sometimes, to tackle this issue, an artificial pressure floor is adopted (e. g. Renaud et al. 2013). One problem with the assumption of a pressure floor is that it may create further artificial effects (see Bleuler & Teyssier 2014), as it effectively represents an additional source of feedback. In light of these facts, as our model is capable of forming stars fast enough at high densities and to contain reasonably the effects of unresolved Jeans lengths, here we choose not to apply any density-dependent pressure floor.

A growing body of works supports the need for individual stellar feedback in high resolution (i. e. pc-scale or higher) simulations (Hu et al. 2017; Emerick et al. 2019; Steinwandel et al. 2020). Other recent works have shown that in high-resolution simulations, the modelling of the stellar component as Initial Mass Function (IMF)-averaged properties may result in an incorrect accounting of the feedback budget (e. g., Smith 2021). As a general, conservative rule, Smith (2021) suggest that the creation of individual stars via IMF-sampling is preferred for particle masses below a few $100 M_{\odot}$. More generally, generating individual stars is preferred when the quantity of gas available for star formation in a cell is sufficient for a few stars only. Such condition may be frequent at sub-pc resolution and for gas densities of $\sim 10^3 - 10^5 \text{ cm}^{-3}$, i. e. for values typical of dense star-forming regions such as molecular cloud cores. The high resolution of our simulations requires therefore that we implement dedicated recipes for modelling the formation of individual MS. To this purpose, we follow the prescriptions described in Sormani et al. (2017) and in Andersson et al. (2020). We adopt a Kroupa (2001) IMF $\xi_{\text{K01}}(m)$, defined as:

$$\xi_{\text{K01}}(m) = \begin{cases} A \cdot m^{-0.3} & \text{if } m < 0.5 M_{\odot} \\ B \cdot m^{-1.3} & \text{if } m \geq 0.5 M_{\odot}, \end{cases} \quad (4)$$

where the normalization constants A, B are computed by imposing continuity and that

$$\int_{0.1 M_{\odot}}^{100 M_{\odot}} \xi_{\text{K01}}(m) dm = 1. \quad (5)$$

We decompose the stellar mass spectrum into N finite intervals. In each mass interval, a mass fraction f_i is defined as

$$\sum_{i=1}^N f_i = 1. \quad (6)$$

In the i -th mass interval, the number of individual stars n_i can be determined by sampling from a Poisson distribution, characterised by a probability P_i given by

$$P_i(n_i) = \frac{\lambda_i^{n_i}}{n_i!} \exp(-\lambda_i) \quad (7)$$

where the mean value λ_i is calculated as:

$$\lambda_i = f_i \frac{M}{m_i}, \quad (8)$$

where M is the total mass available for star formation (re-corrected in the case it exceeds 90 % of the gas mass) and m_i the average stellar mass in the i -th bin. In this procedure, we Poisson-sample the number of particles to be made in each bin, except the lowest bin, in which at most only one particle is spawn, that collects all the lowest-mass stars together. It is worth pointing out that, in its original presentation, the scheme of Sormani et al. (2017) is useful to assign a population of stellar masses to one star or sink particle, whereas in our case we spawn individual particles, each representing a single star.

In the formalism of Sormani et al. (2017), the sampled stellar mass M_{sampled}

$$M_{\text{sampled}} = \sum_{i=1}^N n_i m_i \quad (9)$$

converges towards M for large numbers of stars, due to stochastic sampling. As noted by Andersson et al. (2020), as the sampling requires one random number for each bin, this method is optimal in simulations since the computational expense is determined by the chosen number of mass bins. This means that the individual stars in each mass bin will all have the same mass, but this is acceptable since, for large number of stars, the entire mass range will be correctly sampled (Sormani et al. 2017). Another important advantage is that the bin sizes can be chosen arbitrarily. In this way, in order to limit the total particle number, this allows us to group all the stars below a certain mass threshold in one single bin, while stars above this value are sampled individually. In our case, we adopt $N = 12$ bins and assume that all the stars in the lowest mass bin (characterised by $m_i = 1.55 M_{\odot}$) are not formed as individual stars but grouped into single particles. The reason for this choice is that this mass value corresponds to a Main-Sequence turn-off $> 1 \text{ Gyr}$, larger than the cosmic age of the Universe at the end of our simulation ($t_{\text{end}} = 0.9 \text{ Gyr}$). This choice is sufficient to recover approximately the correct fraction of massive stars (i.e. with initial mass $> 8 M_{\odot}$).

One problem with direct Poisson IMF sampling in simulation cells is that occasionally, a stellar mass larger than the effectively available particle mass may be generated. To avoid this problem, we have enforced a check in the stellar mass created at each sampling, in which the excess with respect to the available gas mass has been re-subtracted from the stellar budget in order to conserve mass. One important choice in this case concerns the stellar mass bin in which the mass in excess has to be subtracted. In our case, we start creating individual stars from the highest-mass bin and, in each bin, we check if the available mass is overflowed. If this is the case, we correct the mass created in that bin by subtracting the mass in excess and stop sampling in the cell. This was performed in order to not underestimate the number of MS, which may have important consequences on the estimated feedback budget. We have re-checked a posteriori that the sampled amount of low-mass stars was not too small compared to the IMF-calculated expectations, and verified that it is consistent to within less than 10 percent.

2.3 Stellar feedback

In our simulations, stars are divided in three categories: MS (with mass $m \geq 8 M_{\odot}$), intermediate mass stars (in the mass range $3 \leq m < 8 M_{\odot}$) and low-mass stars (with $m < 3 M_{\odot}$). In our code we model the feedback of each individual massive and intermediate mass star, whereas low-mass stars are collected into standard stellar particles. This choice is performed both in order to avoid dealing

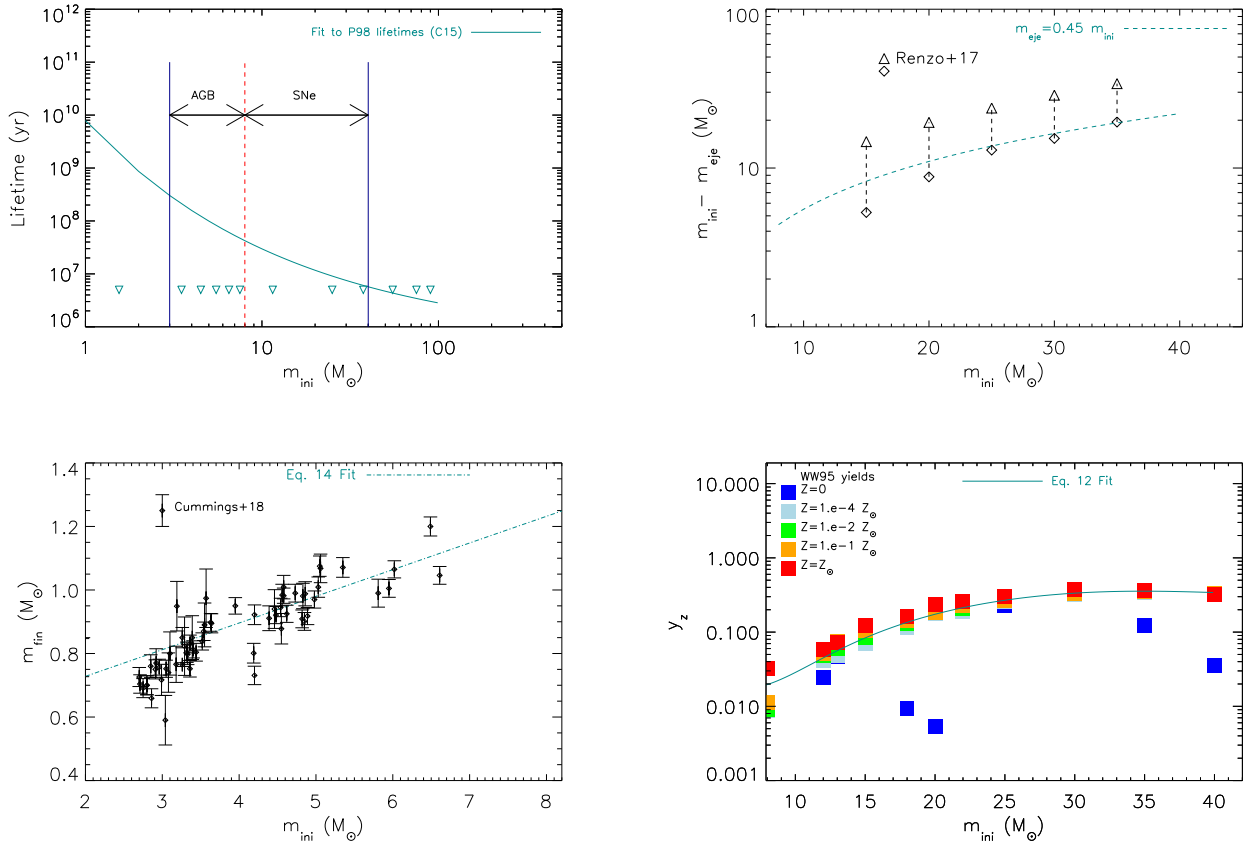


Figure 2. Stellar evolution prescriptions adopted in the present work. The top-left panel shows the stellar lifetimes as a function of the initial mass (dark-cyan solid line) expressed by an analytical fit of the [Portinari et al. \(1998\)](#) stellar lifetimes ([Caimmi 2015](#), see Eq. 10). The range in which individual stars are created is between $3 M_{\odot}$ and $100 M_{\odot}$. We assume that stars with mass $> 40 M_{\odot}$ do not contribute to stellar feedback. The inverted dark-cyan triangles show the centers of the 12 mass bins selected for our IMF sampling. The vertical red dashed line marks the separation mass between AGB and the progenitors of core-collapse SNe, i.e. the massive stars, with initial mass $8 M_{\odot} < m_{\text{ini}} < 40 M_{\odot}$. The vertical solid blue lines enclose the AGB+SNe mass range. The top-right panel shows the prescriptions regarding the mass ejected by stellar winds during the pre-SN phase. This is expressed by the analytical relation used for the adopted mass remnant at the end of the pre-SN phase (dashed dark cyan line), $m_{\text{eje}} = 0.45 m_{\text{ini}}$ (see Sect. 2.3). The open triangles and diamonds plotted at 5 different masses enclose the range of final pre-SN mass values computed by means of stellar evolution models for massive stars ([Renzo et al. 2017](#)). The bottom-left panel shows the adopted analytical fit (dark cyan dash-dotted line) to the final-to-initial stellar mass relation derived by [Cummings et al. \(2018\)](#) (small black open diamonds, plotted with the error bars), expressed by Eq. 15. Finally, in the bottom-right panel we show the analytical fit of Eq. 13 used for the fractional amount of heavy elements ejected by massive stars (dark-cyan dashed line) obtained from the [Woosley & Weaver \(1995\)](#) yields at different metallicities (coloured solid squares).

with a useless and excessive number of stars and also because low-mass stars do not contribute to stellar feedback, as they live longer than the age of the Universe at the final time of the simulation. In the remainder of the paper, we will distinguish between the ‘individual star’ particles, born with mass $> 3 M_{\odot}$ and ‘stellar particles’, containing all the stars with mass $< 3 M_{\odot}$. Fig. 2 summarises all our prescriptions regarding the evolution of individual stars. The adopted stellar lifetimes are from [Portinari et al. \(1998\)](#); here we use the analytical fit from [Caimmi \(2015\)](#), expressed as:

$$\tau(\text{yr}) = 10^{C_1 (m_{\text{ini}}/M_{\odot})^{-C_2} + C_3}, \quad (10)$$

with $C_1 = 4.19$, $C_2 = 0.37$, $C_3 = 5.71$.

2.3.1 Massive stars

For MS, we consider two types of feedback: (i) pre-supernova and (ii) Type-II SN feedback. We also assume that only stars with mass

$< 40 M_{\odot}$ contribute to both feedback and metal enrichment, whereas more massive stars instantaneously end their lives collapsing directly into a stellar black hole. For the sake of simplicity, we assume that each MS deposits both energy and mass into the ISM in two different phases, i. e. at their birth and at the end of their lives (exploding as type II SNe), in equal proportions. Each MS of initial mass m_{ini} is assumed to deposit through its life an amount of mass equal to ηm_{ini} with $\eta = 0.9$ (therefore an amount $0.45 m_{\text{ini}}$ is deposited immediately after its birth in the host cell. This implies that each of these sources ends its life leaving a remnant with mass equal to 10% of its initial mass. The feedback deposited in the pre-SN phase is aimed at accounting for the amount deposited in the stellar wind phase, during which MS are known to represent non-negligible sources of heating (see [Rosen et al. 2014](#); [Calura et al. 2015](#)). The pre-SN feedback channel is a fundamental one, as without including it, the first form of heating will be SN explosions, which do not occur until after a few Myr, i. e. in our case, at the end

of the lifetime of $40 M_{\odot}$ stars. Due to the high gas densities reached in our simulation, this time is long enough to achieve an overly fast increase of the stellar mass. Moreover, the role of pre-SN feedback in stellar complexes turned out to be more important than SNe, in particular in dense stellar aggregates (Hopkins et al. 2010). We assume that the energy deposited by each MS throughout its entire life is proportional to its initial mass. Therefore, each MS deposits a total amount of thermal energy expressed as

$$E_{\text{th}} = \frac{\eta m_{\text{ini}}}{10 M_{\odot}} \cdot 10^{51} \text{erg}. \quad (11)$$

For what concerns the pre-SN phase, a deposited energy increasing with mass is supported by early stellar wind models in which the total mechanical power of the wind

$$E_{\text{wind}} = \int L_w dt = \int \frac{1}{2} \dot{M} v_w^2 dt, \quad (12)$$

(e. g., Weaver et al. 1977, where $v_w \sim 1000 \text{ km s}^{-1}$ is the typical wind velocity and the integral of Eq. 12 is performed over the period of the pre-SN phase) is mostly in the form of thermal energy.

On the other hand, the scaling between SN energy and initial mass is currently unknown. Sukhbold et al. (2016) proposes an interesting model that physically accounts for the explosion of type II SN across a wide range of mass (between $9 M_{\odot}$ and $120 M_{\odot}$). The models are single-metallicity, one-dimensional, they do not include any effects of rotation and are calibrated on two known SN remnants. As stated in their paper, the model is subject to various uncertainties (concerning mostly mass loss and nucleosynthesis). The dependence of their results on key quantities, such as mass loss rates and explosion parameters and dimensionality, is still uncertain (Wanajo et al. 2018).

Due to its fluctuating behaviour, a relation between SN energy and mass similar to the one of Sukhbold et al. (2016) is perhaps expected to produce more limited effects of SN feedback with respect to our assumption. This topic needs to be investigated in the future.

A delayed cooling scheme is used to prevent overcooling for both pre-SN and SN feedback, as described later in Sect. 2.3.2. The prescriptions adopted for pre-SN ejecta from MS are summarised in the top-right panel of Fig. 2. The quantity shown by the dashed line is the difference between the initial stellar mass m_{ini} and the mass released as pre-SN feedback, i. e. $0.55 m_{\text{ini}}$ as adopted in our simulations and compared to the analogous quantity obtained in pre-SN models of stars of various masses by Renzo et al. (2017), expressed as the stellar mass at the end of the pre-SN phase. As visible from this panel, our prescriptions for pre-SN mass ejection are in excellent agreement with the results of Renzo et al. (2017).

Our choice to split in half the energy released by each MS is supported by a few studies that have shown that the energy delivered by massive stars in the pre-SN phase is comparable to that released by SN explosions (Castor, McCray, & Weaver 1975; Rosen et al. 2014; Fierlinger et al. 2016). The only difference between our pre-SN and SN feedback is therefore only the timing, since for each MS, half of both its energy and mass deposition occurs at its birth and half at its death. It is important to stress that our model represents a simplified feedback scheme designed to account for the effects of pre-SN and SN feedback. The effect of this instantaneous release of energy at the birth is presumably different from the one of a more realistic feedback model, where the deposit of energy is spread out over the star's lifetime. Moreover, the response of the gas is likely to be different from the one of a more complete pre-SN modelling, that includes effects such as stellar winds, photo-heating and injection of momentum. Our results indicate that at our resolution, our feedback implementation is efficient in regulating star-formation, but in the

future, it needs to be improved in various aspects, which include a more gradual release of energy and other of the processes mentioned above.

As for the amount of metals released by each massive star, we calculate the total metal yield y_Z , defined as the ratio between the amount of ejected metals and the initial mass, for stars of various masses and metallicities by means of the tables of Woosley & Weaver (1995). Woosley & Weaver (1995) calculated nucleosynthetic yields from SN models for a large amount of isotopes, for an extended grid of stellar masses, including stars from $11 M_{\odot}$ to $40 M_{\odot}$, and metallicities from $Z = 0$ to solar. The calculated yields are shown as functions of initial mass and metallicity in the bottom-right panel of Fig. 2. The amount of metals ejected by each single star is expressed by a polynomial fit to the relation obtained by Woosley & Weaver (1995) at $Z > 10^{-4} Z_{\odot}$, expressed as

$$y_Z = \sum_{k=1}^6 f_k (m_{\text{ini}}/M_{\odot})^k \quad (13)$$

with $f_k = [0.0108, -0.0026, 0.00026, -8.80870 \cdot 10^{-6}, 1.22852 \cdot 10^{-7}, \text{ and } -0.5791]$. This fit is in excellent agreement with the expression obtained by other authors, considering other sets of yields (see Inoue 2012).

The yields computed by Woosley & Weaver (1995) at $Z=0$ are different from most of the sets at larger metallicity. However, our use of the interpolation in Eq. 13 should not represent a major concern. We have verified this by calculating the fractional difference between the integrated yields per stellar generation (defined as in Eq. 1 of Vincenzo et al. 2016), performing the integral in the massive star regime ($8 M_{\odot} \leq m \leq 40 M_{\odot}$) at $Z = 0$ and at $Z = 0.0001 Z_{\odot}$. The fractional difference between the two integrated yields amounts to 0.36, therefore our overestimate of the yields in a zero-metallicity stellar population is well within a factor 2.

2.3.2 Delayed cooling for feedback of single stars

In simulations, in high density regions of the ISM such as the typical cold, star forming gas, the energy returned by MS can be artificially radiated away extremely quickly (Katz et al. 1992) due to efficient cooling. The primary consequence of this phenomenon is an inefficiency of stellar feedback and an unregulated growth of stellar mass, resulting in strong disagreement with the most fundamental properties of galaxies and stellar systems. This effect is due to a number of reasons, including inadequate resolution and a variety of physical processes associated with stellar feedback such as radiative heating from young stars (Geen et al. 2016), radiation pressure (Murray et al. 2010) and other non-thermal processes such as magnetic fields, turbulence and cosmic rays (see Teysseier et al. 2013; Farcy et al. 2022).

Various methods have been proposed to prevent immediate radiative loss of the energy injected by MS (e. g., Thacker & Couchman 2000, Agertz et al. 2013, Rosdahl et al. 2017). One way to prevent overcooling is by increasing resolution, where possible. Kim & Ostriker (2015) modelled the evolution of a SN remnant to find the required optimal cell size to prevent overcooling. They found that in a uniform medium, the ideal resolution has to be 3 times smaller than the quantity $r_{\text{SF}} = 22.1 n_0^{-0.4}$, where n_0 is the gas number density in units of cm^{-3} . In our case, the maximum density can be of the order of $n_0 \sim 10^5 \text{ cm}^{-3}$; fully resolving the SN remnant at such high density requires a resolution attainable only at extremely high redshift, well before the beginning of star formation. Besides increasing resolution, other sub-grid methods are used to prevent local overcooling. In this work, we temporarily switch off cooling in

suitable cells, starting from the general method proposed by [Teyssier et al. \(2013\)](#), in which the feedback is released as thermal energy and simultaneously stored in a tracer, passively advected passively advected with the flow. Each time a MS is born or a SN explodes, besides injecting the thermal energy of the star into the host cell, a 'non-thermal' energy tracer is also accumulated on the grid in the form of a passive scalar ρ_{NT} , associated with an unresolved turbulent energy. In the native implementation, created mostly for modelling star particles, radiative cooling is switched off in each cell in which the local non-thermal velocity dispersion σ_{NT} is above a certain limit σ_{min} . Moreover, ρ_{NT} is assumed to decay on a dissipation timescale t_{diss} . In this formalism, the adjustable parameters are 2, i. e. t_{diss} and σ_{min} . As for the dissipation timescale, the original choice of [Teyssier et al. \(2013\)](#) was to set $t_{\text{diss}} = 10$ Myr, i.e. of the order of the typical molecular cloud lifetime. In our simulations we choose the resolution-dependent approach proposed by [Dubois et al. \(2015\)](#) for computing t_{diss} :

$$t_{\text{diss}} = 0.82 \left(\frac{\eta_{\text{SN}}}{0.1} \right)^{-1/3} \times \left(\frac{\epsilon_*}{0.01} \right)^{-1/3} \times \left(\frac{N_{\text{cell}} \Delta x}{4 \times 10 \text{ pc}} \right)^{2/3} \times \left(\frac{n_0}{200 \text{ cm}^{-3}} \right)^{-1/6} \text{ Myr}. \quad (14)$$

It is worth noting that in the original formula for t_{diss} of [Dubois et al. \(2015\)](#), η_{SN} represents the mass fraction of stars ending up into a type II supernova and depends on the adopted stellar IMF. In the case of a [Salpeter \(1955\)](#) IMF, a value of $\eta_{\text{SN}} = 0.1$ corresponds to 10^{51} ergs of SN energy released for every $100 M_{\odot}$ of stars formed in the simulation. In the case of a [Kroupa \(2001\)](#) IMF, the appropriate value for this quantity is $\eta_{\text{SN}} = 0.15$.

Our model is in a very different regime (in terms of stellar mass resolution) from the one of [Dubois et al. \(2015\)](#); without any knowledge of the appropriate value for this quantity, in our implementation we adopt an empirical model and use a value of 0.9. In practice, this choice corresponds to a factor ~ 0.6 in the value of t_{diss} . Therefore, in our case, assuming $\eta_{\text{SN}} = 0.9$, $\epsilon_* = 0.1$, $N_{\text{cell}} = 4$, $n_0 = 10^5 \text{ cm}^{-3}$ and for a maximum resolution $\Delta x = 0.2 \text{ pc}$ (obtained at $z = 10$), we have $t_{\text{diss}} \sim 0.005 \text{ Myr}$.

In the native implementation, the value adopted for σ_{min} is 100 km s^{-1} , corresponding to 0.1% of the specific energy injected by a single SN ([Rosdahl et al. 2017](#)) and implying that the cells in which the cooling is reinstated after the delay are all the ones presenting $\rho_{\text{NT}} < 0.001\rho$. From a physical point of view, this is equivalent to shutting down the cooling in cells in which the non-thermal velocity dispersion is still above a certain threshold ([Teyssier et al. 2013](#); [Dubois et al. 2015](#); [Rosdahl et al. 2017](#)).

It is important to note that in our formalism, we use ρ_{NT} as the proxy of a turbulent energy density only because we are assuming a uniform specific energy injected by MS. For this reason, a mass tracer is equivalent to an energy tracer. In this context, it is therefore legitimate to track the dissipation of the non-thermal energy through the passive scalar ρ_{NT} .

In lower-resolution simulations or in the case of a different modelling of stellar feedback (such as a gradual release of energy of single stars, e. g. in the pre-SN phase), it may be frequent to have a few MSs ejecting mass and energy in a single cell in which the density is very high, therefore $\rho_{\text{NT}} \ll 0.001\rho$. One possibility to overcome this is to elaborate a fine-tuning of the parameter σ_{min} , which is however time-consuming, given the expected order-of-magnitude variations in the optimal choice as a function of cell size and feedback implementation and considering that such choice might depend on resolution in a non-trivial manner. We propose

instead a simpler approach to prevent overcooling and assume that, in cells where single MS have deposited energy and mass, ρ_{NT} is posed equal to ρ , to switch off cooling for a limited amount of time.

By construction, this approach is versatile as it is equivalent to initializing the flag used for switching off radiative cooling $f_{\text{NT}} = \rho_{\text{NT}}/\rho$ to the maximum value of 1, independent on the amount of ejecta present in the cell. By means of a few low-resolution runs, we have carefully verified that this new approach ensures that the stellar feedback is correctly accounted for and that the stellar mass of our system is satisfactorily reproduced. On empirical grounds, the choices described in this section enable an effective model which allows us to achieve the desired results, i. e. an efficient feedback at our resolution and considering our ingredients.

2.3.3 Asymptotic Giant Branch stars

Even if AGB do not contribute substantially to the heating of the ISM, in the case of a standard IMF such as the one adopted here, their overall contribution in terms of ejected mass is dominant with respect to other stellar sources. In our model, individual AGB are assumed to release all their mass at the end of their lifetimes. To compute the total mass restored by an AGB, we consider an analytic, linear fit to the final-to-initial mass relation (FIMR) of [Cummings et al. \(2018\)](#), based on an analysis of an observational sample of white dwarfs from various star clusters. The study of [Cummings et al. \(2018\)](#) was based on the use of two different sets of white dwarf progenitor masses and indicates a weak dependence of the results on the used model. The results of their study are shown in the bottom-left panel of Fig. 2 as black diamonds, reported with their error bars on the derived final mass values. The analytic fit to the FIMR used in our work is

$$m_{\text{fin}} = 0.56 + 0.084 m_{\text{ini}}, \quad (15)$$

shown in the same panel by the thick dot-dashed dark cyan line. The fit is accurate in the range $4 \leq m/M_{\odot} < 8$, whereas it leads to a slight overestimate of the final mass for stars of $3 M_{\odot}$.¹ The relation of eq. 15 is used to derive the mass ejected by each AGB star, computed as the difference between the initial and final mass, $m_{\text{ini}} - m_{\text{fin}}$.

We neglect the contribution of AGB to the heating of the ISM and assume that the amount of metals they restore is $Z_{\text{ini}} \cdot (m_{\text{ini}} - m_{\text{fin}})$, where Z_{ini} represents the metallicity of the ISM at their birth, stored into a variable at the birth of each individual star, along with the birth time.

In the present study, we do not consider the feedback from type Ia supernovae. For a [Kroupa \(2001\)](#) IMF, as adopted here, the total number of type Ia SNe per stellar mass in a simple stellar population across a Hubble time is $\sim 10^{-3}$ ([Lacchin et al. 2021](#)), therefore significantly lower than the number of MS (~ 0.01 per stellar mass), which will dominate the global budget of energy and metals restored into the ISM.

3 RESULTS

In this section, we present an overview of main results from our simulations. First, we show results concerning the global evolution

¹ In their study, [Cummings et al. \(2018\)](#) find a deviation from a linear relation at initial masses $< 3 M_{\odot}$, i. e. in a mass range not considered here for stellar feedback.

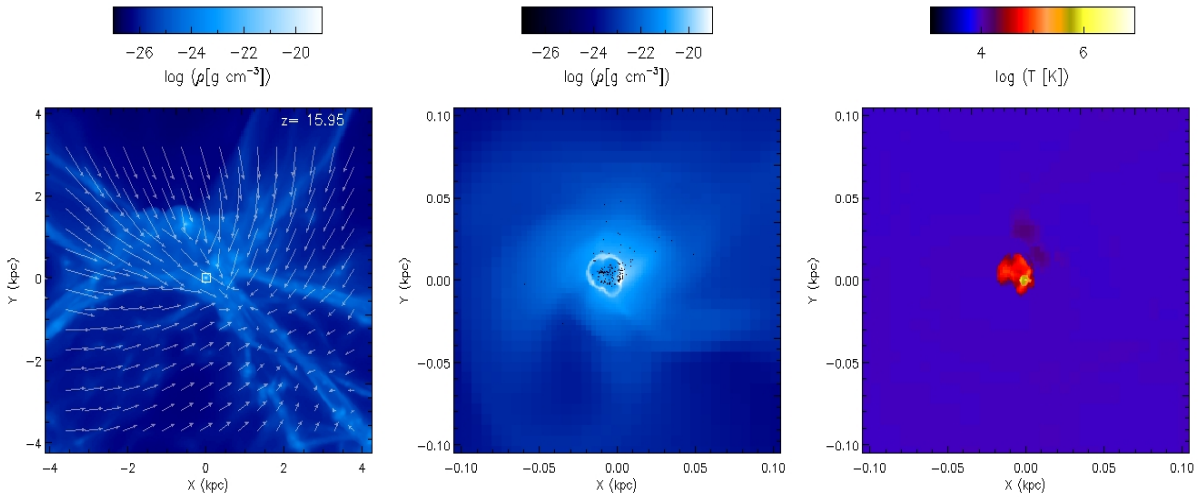


Figure 3. Left: density map in the x - y plane of a limited region of transverse physical size ~ 8 kpc containing the first stars at $z = 15.95$. The map is centered on the region of maximum temperature of the entire volume, which is also one of the highest density locations. The arrows represent the velocity field of the gas. Middle panel: zoomed slice density map of the region enclosed in the white square shown in the left panel. The black dots show the positions of the stars and of the stellar particles. Left map: slice temperature map of the same region as shown in the middle panel. All maps are computed as mass-weighted averages along the line of sight.

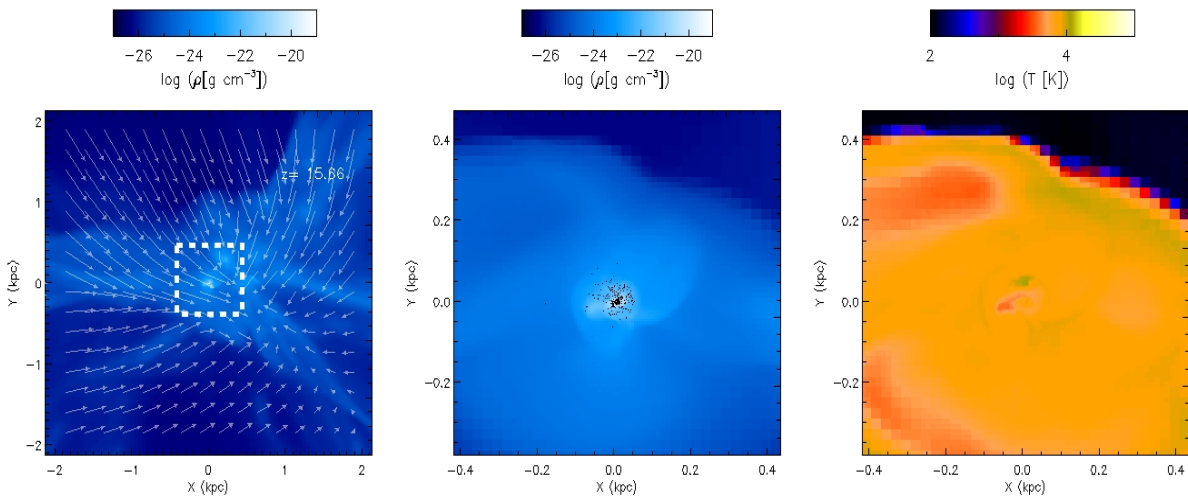


Figure 4. Left: density map in the x - y plane of a limited region of transverse physical size ~ 5 kpc that contains the first stars formed in our high-resolution simulation, computed at $z = 15.66$. The middle panel shows a zoom on the region enclosed by the white dashed line of the left panel. The black dots are as in Fig. 3. The right panel shows a slice temperature map of the same region as in the middle panel. All maps are computed as mass-weighted averages along the line of sight.

of the simulated system, focusing in particular on the gas and stellar components. We also present the physical properties of the stellar clumps in place at the final redshift of $z = 6.14$. More detailed analysis will be presented in follow-up works.

3.1 Global evolution of the system

3.1.1 Evolution of the gas

In our simulation, star formation begins at $z = 15.95$, corresponding to a cosmic time of 0.251 Gyr. Fig. 3 shows slice density and

temperature maps, calculated on the x - y plane, of a limited region of the computational volume at $z = 15.95$ that includes the site where star formation ignites for the first time. At this redshift, the maximum spatial resolution is of ~ 0.2 pc. The slice map reported in the left panel of Fig. 3 represents a region of physical size ~ 8 kpc and outlines the filamentary nature of the density structure. The map is centered on the region of maximum temperature of the entire volume, which is also one of the highest density locations. The density ranges between 10^{-26} g cm^{-3} and 10^{-19} g cm^{-3} ; the latter value corresponds to maximum density of $\sim 10^5$ particles cm^{-3} . The velocity field follows the extension and shape of the dense

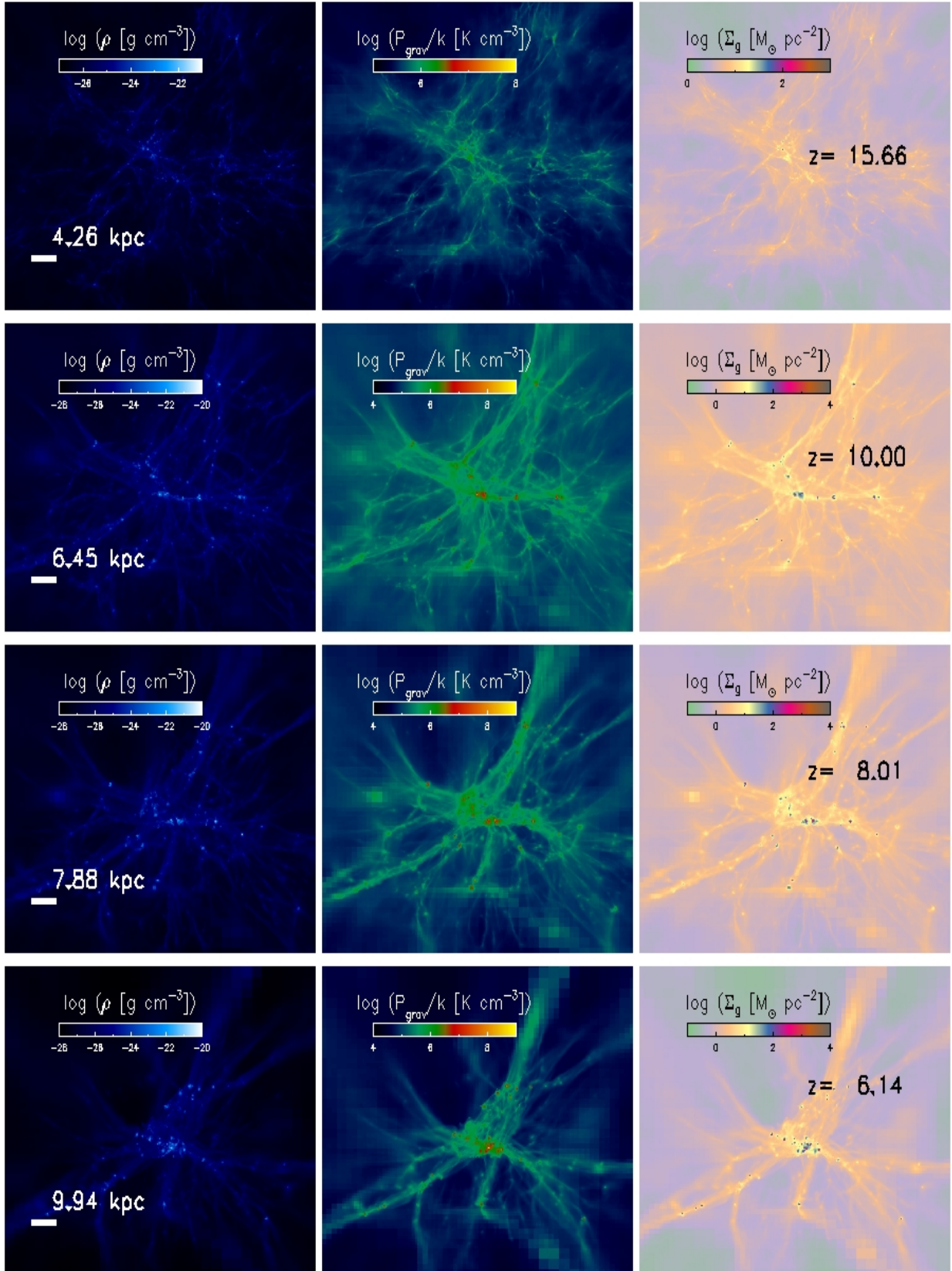


Figure 5. Global evolution of the main properties of the gas component in the highest-resolution simulation. The maps describe the density (left column), gravitational pressure (middle column) and gas surface density (right column) distributions in the central, zoomed-in region of the box, computed at four different redshifts (from top-to bottom: $z = 15.66$, $z = 10$, $z = 8.01$, $z = 6.14$). The horizontal white solid lines shown in the left column-panels indicate the physical scale. The density maps are computed as mass-weighted averages along the line of sight. The other cases are column density maps, in which the quantities are summed along the line of sight.

filaments, characterised by $\rho > 10^{-23} \text{ g cm}^{-3}$, and shows that the overall motion of the cold gas is directed towards the central region of the plot. A few dense knots are visible along some of the filaments and the maximum density is reached in one in particular, visible at the centre of the left panel and indicated by an open square. The central panel of Fig. 3 is a zoomed density map of this $\sim 0.2 \text{ kpc}$ -wide region. A diffuse distribution of stars and stellar particles is visible, shown as black dots and particularly dense at the centre, whose features will be described in more detail later. The central stellar component is embedded in a $\sim 30 \text{ pc}$ -wide cavity, surrounded by a dense (with density as high as $10^{-19} \text{ g cm}^{-3}$), thin shell of thickness of a few parsec. This shell surrounds a hot expanding bubble powered by the feedback of the newly born MS. The effects of the feedback are shown also in the temperature slice map, shown in the right panel of Fig. 3. A $\sim 10 \text{ pc}$ -wide, very hot region with temperature $> 10^6 \text{ K}$ is visible at the centre, surrounded by a more extended, confined structure with $T \sim 10^5 \text{ K}$, whose shape is reminiscent of the cavity surrounded by the thin shell seen in the central panel. The presence of such a hot, rarefied (with respect to the shell) cavity confirms that our pre-SN feedback model is efficient at this resolution.

Fig. 4 shows slice density and temperature maps of the same region computed a few Myr later, at $z = 15.66$, corresponding to a cosmic time of 0.258 Gyr . The region shown in the left panel is centered on the highest density cell of the computational volume. At the centre, there is also the same stellar component present in Fig. 3, but slightly grown in mass and number of stars. The central panel is a zoomed density map of the 1 kpc -wide region enclosed within the dashed-line square shown on the left. The cavity visible at the previous time has disappeared and the gas has recollapsed into a central clump, in which most of the stars are embedded. The central density, of the order of 10^5 cm^{-3} , is comparable to the densest regions in local molecular clouds (e. g., Dobbs et al. 2014). The temperature map on the right shows that the gas has cooled down to lower temperatures than shown in Fig. 3, in this case of the order of $T \sim 10^4 \text{ K}$ in the central regions.

Fig. 5 shows the global evolution of the main properties of the gas component in the highest-resolution simulation. The maps describe the density, pressure structure and surface density distribution of the gas in the central, zoomed-in region of the box, computed at four different redshifts.

In the middle panels, we report the gravitational pressure of the gas, expressed as the gravitational force per unit area, i.e. $P_{\text{grav}} = G \times \Sigma_{\text{gas}}^2$, where G is the gravitational constant and Σ_{gas} is the gas surface density. In virialised systems like our clumps, the gravitational pressure equals the kinematic pressure $\rho \sigma^2$ (where σ is the velocity dispersion), and is suited to infer the amount of turbulence present in the system (Elmegreen & Efremov 1997, Ma et al. 2020).

The three maps in the top row describe the properties at $z = 15.66$, i. e. soon after the onset of star formation. At this epoch, the seeds of a network of dense, low-pressure, cold (with typical temperatures of $\sim 10^3 \text{ K}$) filaments with surface densities $\sim 10 \text{ M}_{\odot}/\text{pc}^2$ are present. At a later time ($z = 10$, second-from-top row of Fig. 5) a handful of compact, dense ($\rho > 10^{-22} \text{ g cm}^{-3}$) clumps are visible at the centres of the dense gas filaments. The clumps have $\Sigma_{\text{gas}} \sim 10^2 \text{ M}_{\odot}/\text{pc}^2$, size of $\sim 0.1 \text{ kpc}$ and are characterised by high pressures, $P_{\text{grav}}/k \sim 10^6 \text{ K cm}^{-3}$, comparable to turbulent star-forming regions in local molecular clouds (e. g., equivalent to a cloud with a particle density of 100 cm^{-3} and a turbulent velocity of 10 km/s) and several orders of magnitudes larger than the warm ISM in the Milky Way disc, characterised by P_{grav}/k

$\sim 10^3 \text{ K cm}^{-3}$. At later epochs, the overall properties of the filaments do not evolve much but the number of collapsed gas clumps increases considerably. At the final redshift of the simulation, several tens of clumps are present in the zoomed-in region, with increased maximum surface densities, now in excess of $10^3 \text{ M}_{\odot}/\text{pc}^2$. Also the pressure of the most central clumps has increased, to reach $P_{\text{grav}}/k = 10^8 \text{ K cm}^{-3}$ at $z = 8$. Locally, these extreme pressure values correspond to the ones of the most highly-pressurised medium in molecular clouds in the turbulent centres of local star-forming galaxies (Sun et al. 2018; Chevance et al. 2020) or in local starbursts and mergers (Molina et al. 2019 and references therein), generally higher by a few orders of magnitude than the Milky Way. Such regions are rare locally, but are expected to be more frequent at high redshift (Kruijssen et al. 2014; Ma et al. 2020).

In conclusion, the large-scale properties of the gas component are qualitatively not too different from the results of other cosmological zoom-in simulations performed at various scales (see, e. g., Dubois et al. 2015; Schaye et al. 2015; Zhu et al. 2020; Costa et al. 2018 and others; for a review, see Vogelsberger et al. 2020). The most remarkable aspect of our simulations concerns the high spatial resolution, which allows us to resolve the cold gas up to densities and pressure values generally not achievable in simulations with typical resolution of 10 pc or more.

3.1.2 Evolution of the stellar component

The top panels of Fig. 6 illustrate some properties of the first stars, formed in our simulation at $z = 15.95$. The top-left panel shows the location of the stars with respect to the DM distribution, originating at the centre of an overdensity with DM surface density $\Sigma_{\text{DM}} \sim 10^3 \text{ M}_{\odot} \text{ pc}^{-2}$ and enclosed by the 0.2 kpc -wide blue open square.

The stellar age distribution at this redshift is shown in the top-right panel. Two populations have originated, with a difference in age of $\sim 2 \text{ Myr}$ and with a total stellar mass of $\sim 3.4 \times 10^3 \text{ M}_{\odot}$. The age distribution shows both the normalised differential and cumulative contribution to the stellar mass of individual stars and stellar particles. Most of the mass is in the form of stellar particles, which reflects our assumption of storing all the stars formed in the lowest stellar mass bin (ranging from 0.1 M_{\odot} to 3 M_{\odot}) into them. For the Kroupa (2001) stellar IMF chosen in this work, the normalized mass fraction in this bin is ~ 0.6 , corresponding to the final value of the cumulative age distribution of stellar particles. This value occurs at 0.0023 Gyr , which is the age of the oldest stars present at this epoch.

The bottom panels of Fig. 6 show the properties of the first-born stellar populations a few Myr later, at $z = 15.66$. Two distinct stellar aggregates are visible in the DM density map on the bottom-left. The older, more massive population lying at the centre and a younger component are highlighted by the solid and thick dashed blue box, respectively, located at a relative distance of $\sim 1.5 \text{ kpc}$. The total stellar mass is 6400 M_{\odot} , 13% of which is in the lower-mass, younger clump (clump B in Fig. 6).

The stellar age distribution is shown on the bottom-right of Fig. 6. At this time, 4 main populations are present, the 3 oldest of which are in Clump A. All the stellar populations are younger than 9 Myr . The most massive, still living stars have mass of 25 M_{\odot} and, considering our adopted stellar lifetimes, will die exploding as SNe (and restoring the first metals) $\sim 9 \text{ Myr}$ after their birth. At this epoch, no massive star has died yet, therefore no metals have been returned. Since metals are returned only with SN explosions. This explains why the gas at this epoch is still metal-free, as we will

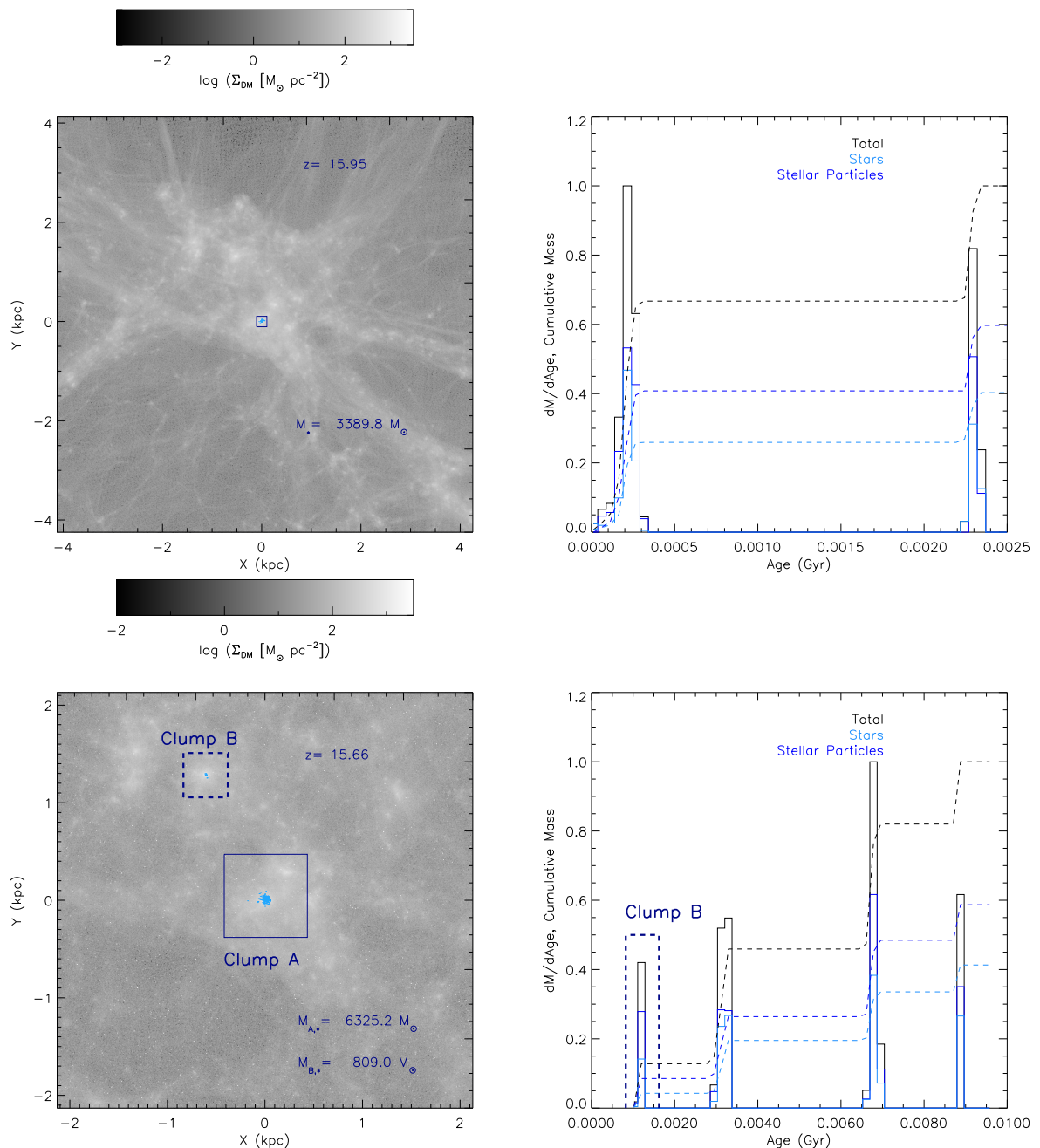


Figure 6. Properties of the first stars formed in our highest-resolution simulation. The top-left panel shows a projected density map (where the mass has been summed along the line of sight) of the DM distribution of transversal size of ~ 8 kpc at $z = 15.95$, where the stars are indicated by the cyan dots at the centre of the map. The top-right panel shows the differential (solid lines) and cumulative (dashed lines) mass distributions of age computed for the individual stars (cyan), stellar particles (blue) and the sum of the two (black). The bottom-left panel shows a projected density map of the DM distribution of transversal size of ~ 4 kpc at $z = 15.66$, where the stars are indicated by the cyan dots. The oldest, main stellar clump A is enclosed by the blue solid box, whereas the youngest (Clump B) is enclosed by the blue dashed box. The stellar masses of the clumps are reported on the right-bottom. The bottom-right panel is as the top-right one. The distributions for Clump B are enclosed in the blue dashed box.

see later, and shows how the star formation is regulated by pre-SN feedback only.

Fig. 7 shows the evolution of some of the main properties of the stellar component in our highest resolution simulation. The maps describe the DM surface density (left column), stellar density

(central column) and gas metallicity distribution (right column) in the central, zoomed-in region of the box, computed at the same redshifts as in Fig. 5.

As cosmic time evolves, more and more stellar clumps form at the centre of the densest DM halos with mass density $> 10^2 M_\odot$

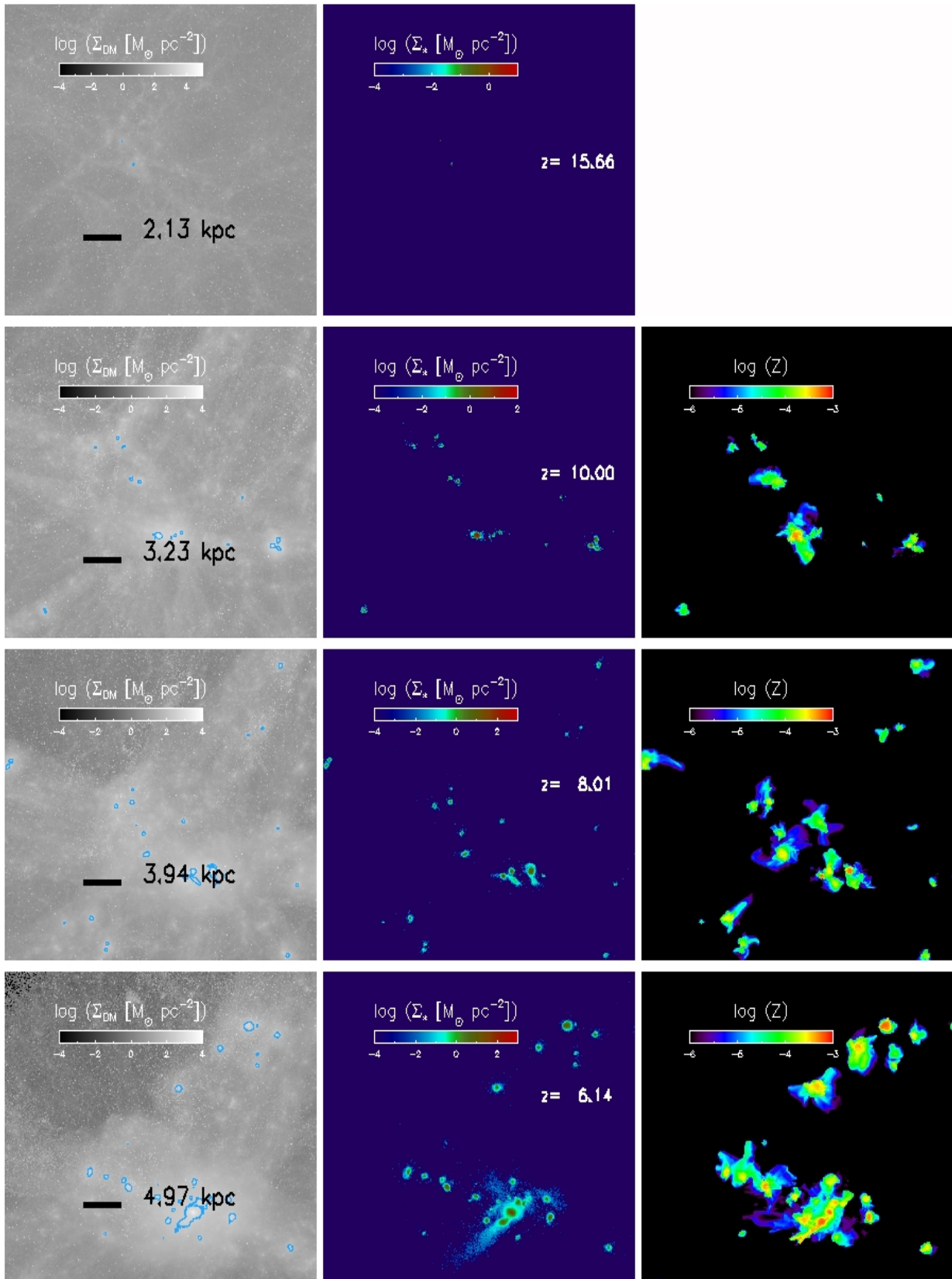


Figure 7. Global evolution of some of the main properties of the stars in the highest-resolution simulation. Projected mass density maps of the dark matter and of the stars at various redshifts are shown in the left and middle column, respectively. The cyan contours in the left column indicate regions where the stellar surface density is $> 0.1 \text{ M}_{\odot} \text{pc}^{-2}$. On the right, slice gas metallicity maps are reported at three different redshift values. No metallicity map is shown at $z = 15.66$ (top row) since at this redshift the gas is still metal-free (see the text for further details). Each DM and stellar surface density map is calculated by means of a sum of the stellar and DM mass along the line of sight, respectively. The metallicity maps are computed as mass-weighted averages along the line of sight.

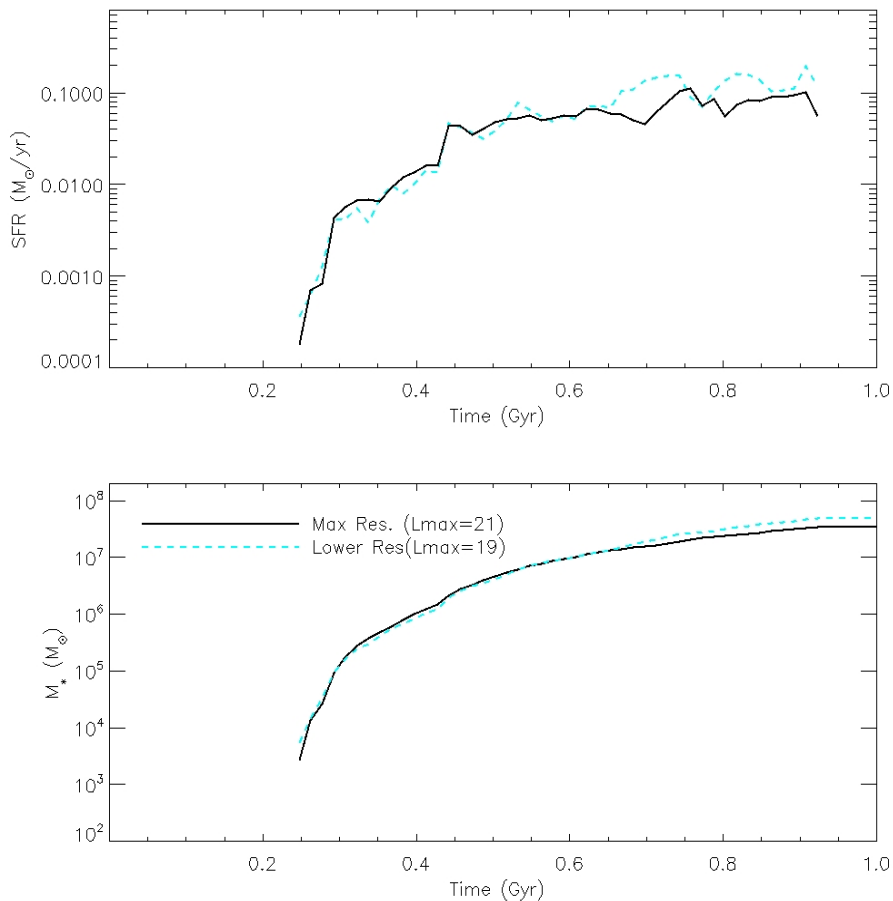


Figure 8. The upper and lower panels show the evolution of the total star formation history and of the cumulative stellar mass in our high-resolution (solid black line) and lower resolution (cyan dashed line) simulations.

pc^{-2} . At the same time, an increasing fraction of the volume is enriched with metals due to exploding SNe. The maximum metallicity is $Z = 10^{-3}$, reached in regions where the largest stellar clumps are located. A more detailed discussion of the properties of the stellar clumps will be performed later, in Sect. 3.2.

Fig. 8 shows the star formation history (upper panel) and cumulative total stellar mass (lower panel) of our highest resolution simulation, compared with the results of an analogue run with the same setup but lower resolution. In the latter run, the maximum refinement level is $l_{\text{max}}=19$, corresponding to a factor 4 wider cells at the highest resolution. This figure is useful also to check the numerical converge of our runs. In the two simulations, SF starts at a remarkably similar epoch and, after a continuous increase until a cosmic time of 0.5 Gyr, the SFR values settle to comparable values, of the order of $\sim 0.1 M_{\odot} \text{ yr}^{-1}$. Likewise, the evolution of cumulative stellar mass in the two runs is remarkably similar. At the final time (0.92 Gyr), the total final stellar masses are consistent to within a factor 1.4, with a larger value in the lower resolution run. Considering the intrinsic stochasticity of SF and the resolution-dependent implementation of some of our prescriptions, such as the dissipation timescale for delayed cooling, the agreement between the results of the two runs is satisfactory.

3.2 Properties of the clumps

In our simulations, the stellar clumps have been identified by means of the friends-of-friends algorithm *fof*², a versatile program created to find groups in N-body simulations. The code is set to reject any group with less than a threshold number of members, defined by the user. By definition, a group identified by *fof* is one in which every particle has at least one "friend" particle within a distance less than or equal to a "linking length". We made a few attempts to vary both the minimum particle number N_{min} and the linking length l and settled on those values for which the results were converging, i. e., $N_{\text{min}} = 64$ and $l=1$ kpc, respectively.

The maps in fig. 9 show the central, highest-resolution region containing all the stellar clumps identified with *fof* at the end point of our simulation, i.e. at redshift $z = 6.14$.

Some clumps show signs of distortions due to interactions with nearby structures, as well as extended tails, formed by stars lost during the interactions and along their orbital motions. The clumps with nearby companions are very often connected to them via low-density "bridges" of stars (bottom panel of Fig. 9).

An elongated stellar component is visible at the centre of the stellar density map, including a major fraction of the total stellar mass ($1.8 \times 10^7 M_{\odot}$). This extended distribution (Fig. 9, bottom

² <https://github.com/N-BodyShop/fof>

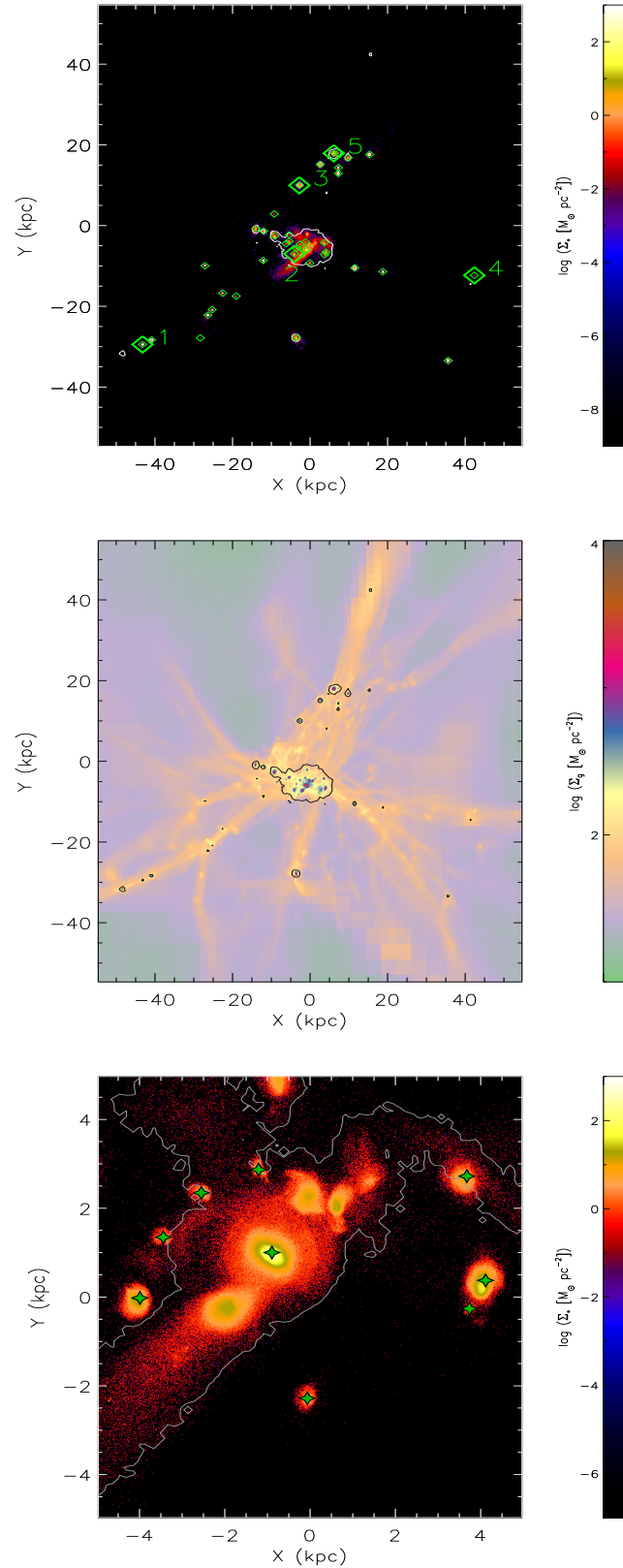


Figure 9. Upper panel: projected stellar density map at redshift $z = 6.14$ of the central region of the box, with transversal physical size of ~ 100 kpc. The small green open diamonds mark the positions of the stellar clumps identified with fof (see the text for further details). The positions represent the mass-weighted averages of the x - and y - coordinates of all the individual stars and stellar particles belonging to each stellar clump. The big green diamonds mark the positions of a few representative stellar clumps shown in Fig. 10, 11, A1, A2, and A3. The white contours enclose the regions with DM surface density $> 10^{2.5} M_{\odot} \text{pc}^{-2}$. Central panel: gas surface density map of the same region and with contour lines as in the upper panel. Bottom panel: zoomed, ~ 10 kpc-wide stellar density map of the central region of the box. The green stars are on the centres of mass of the identified clumps. The grey contour encloses one group of stars identified by fof which includes a diffuse, central stellar component, whose centre of mass coincides with the highest density point. Each map and contour is calculated as a sum of the mass along the line of sight.

panel) is characterised by density $\sim 10^{-1} M_{\odot} \text{pc}^{-2}$ and is the result of multiple mergers, interactions and fly-bys between clumps, which gave rise to the stripping of a considerable amount of loosely-bound stars. The elongated stellar component extends well beyond the extent of the dense gas. This outlines further its dynamical origin, i. e. that it originated from stars shed by the clumps during their mutual interactions.

The map in the middle of Fig. 9 shows that each DM subhalo contains a dense gas component, generally located at the centre of the halo. Most of the stellar clumps have a gas counterpart, and the two components are broadly co-spatial. On the other hand, the DM sub-halos which do not show any presence of stars are considerably rare.

The bottom panel shows a zoom on the central region of the box. The elongated structure that includes the central clump is fragmented by fof in a few sub-clumps, whose number depends on the adopted values for N_{min} and l . From a visual inspection, it is clear that these sub-clumps are artifacts of the algorithm. This incorrect pattern recognition is due the fact that here lies the most massive clump of the simulation (with mass $\sim 10^7 M_{\odot}$), that it is interacting with other smaller systems and that the field is contaminated by extended stellar streams produced by previous interactions. In our analysis, we have considered this extended central region as a single clump and we have removed it from the fof clustering process. With this precaution, fof detects the same number of clusters among the remaining stellar particles for any given choice of N and l above the mentioned threshold values.

Each stellar clump identified by fof lives within a DM halo. This suggests that each stellar clump is gravitationally bound; this issue will be addressed more specifically in a forthcoming work, extending the analysis performed with fof to a full phase-space analysis on the stellar particles (Pascale et al., in prep.).

Two representative cases of stellar clumps and of their gas counterparts are shown in Figures 10 and 11, showing various properties of the clumps (1 and 4 of the top panel of Fig. 9, respectively) and of the gas surrounding each clumps. The stellar masses of clumps 1 and 4 are $1.16 \times 10^5 M_{\odot}$ and $1.26 \times 10^3 M_{\odot}$, respectively. Clump 1 has another object nearby with similar stellar mass. However, both clumps are in isolated regions, several 10 kpc away from the centre of the box, populated with a multitude of stellar systems.

Fig. 10 shows that the youngest stars coincide with the densest and highest-pressure ($P_{\text{grav}}/k > 10^6 \text{ K cm}^{-3}$) gas. The density and pressure maps show that the gas is turbulent. This is indicated also by the computed velocity dispersion of the cold gas. For each of the 5 clumps shown in Fig. 10, A1, A2, 11 and A3, we have computed the 1D density-weighted velocity dispersion of the cold gas (with temperature $< 200 \text{ K}$) defined as:

$$\sigma^2 = \frac{1}{3} \frac{\sum \rho_c [(v_x - \bar{v}_x)^2 + (v_y - \bar{v}_y)^2 + (v_z - \bar{v}_z)^2]}{\sum \rho} \quad (16)$$

(e. g., Shetty et al. 2010; Calura, Bellazzini, & D’Ercole 2020), where ρ_c , v_x , v_y and v_z are the density, the x-, y- and z-component of the velocity of the cold gas in a cell respectively, whereas \bar{v}_x , \bar{v}_y and \bar{v}_z are the average x-, y- and z-component velocity values, respectively.

The computed σ is shown in the middle-left panel of Fig. 10 and is in agreement with the velocity dispersion measured in local clouds, e. g. as traced by the relation between σ and size observed in molecular clouds (Larson 1981, Elmegreen et al. 2000). Moreover, in most cases the obtained σ values are larger from the expected dispersion due to thermal pressure only, in our case of the order of 1 km/s, corresponding to the sound speed at our assumed temperature

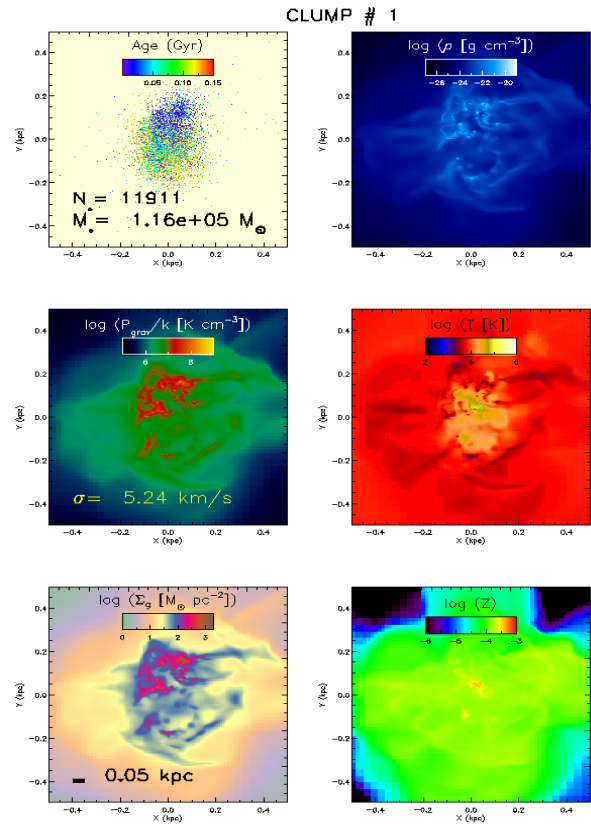


Figure 10. Main properties of clump 1 of Fig. 9 and slice maps of various properties of the gas, each one centered on the centre of mass of the clump. Top-left panel: scatter plot of the stars, colour-coded with their age. Top-right: gas density map. Middle-left: pressure map. Middle-right: temperature map. Bottom-left: gas surface density. Bottom-right: metallicity map. The density, temperature and metallicity maps are computed as mass-weighted averages along the line of sight. For the gravitational pressure and surface density we show column density maps, in which the quantities are summed along the line of sight.

floor ($T = 100 \text{ K}$). The highest-metallicity gas has $Z \sim 0.001$.

Clump 4 (Fig. 11) is composed of a considerably lower number of stars and the average gas density is significantly lower than clump 1. The stars are much younger, the gas is much less perturbed as due to the lower number of MS and it shows significantly lower maximum density, temperature and σ^3 . The gas is still metal-free.

Other examples (clumps 2, 3 and 5 of the top panel of Fig. 9) are shown in the Appendix.

3.3 Comparison with D1+T1

The total stellar mass of the simulated system at $z = 6.14$ is $3.4 \times 10^7 M_{\odot}$. This value is in satisfactory agreement with the observed stellar mass of the D1+T1 system identified by Vanzella et al. (2017a) which, adding up the contribution of these two systems only, amounts to $2.3 \times 10^7 M_{\odot}$. Additional fainter star-forming knots at the same redshift have already been identified and some of them have been spectroscopically confirmed (Vanzella et al. 2019), with

³ Clump 4 presents a lower dynamic range in temperature with respect to the other systems. In this case, σ has been computed considering the gas with $T < 5000 \text{ K}$.

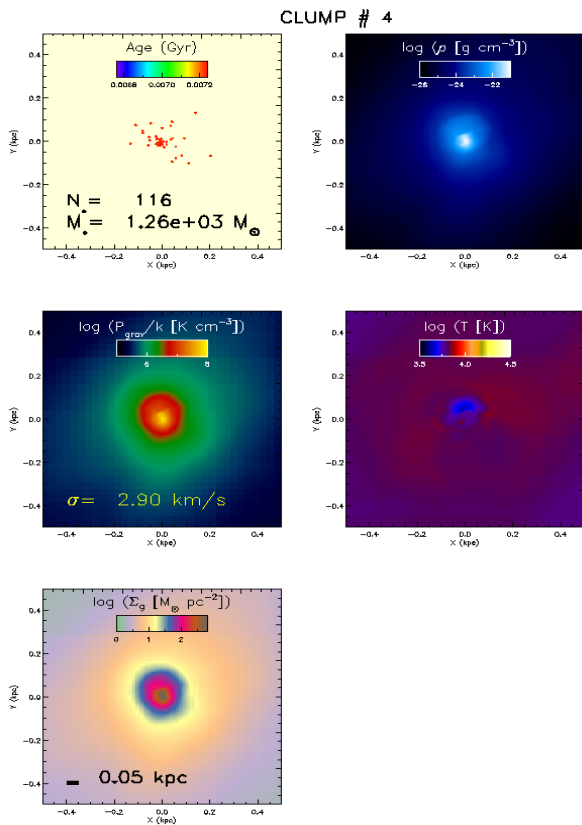


Figure 11. Main properties of clump 4 of Fig. 9 and slice maps of various properties of the gas, each one centered on the centre of mass of the clump. Panels as in Fig. 10.

de-lensed magnitudes fainter than 32. Currently, work is in progress to determine the physical sizes and stellar masses of other 5 systems (Mestric et al., in prep.). Based on the brightness of the visually identified systems, it appears likely that the bulk of the stellar mass is dominated by the D1+T1 system. Moreover, no significant presence of dust is expected to be obscuring such low-mass systems, which might have major effects in the determination of basic quantities such as mass, age and SFR.

The clump sizes are computed as the half-mass radii of the surface density distributions, calculated assuming for each system a circular shape.

The sizes of the simulated highest mass clumps are typically of the order of ~ 100 pc. On the other hand, the measured half-light radius of D1 is 44 pc. At face value, this implies that the average stellar density of the simulated clumps is ~ 1 order of magnitude lower than the observations. Moreover, Vanzella et al. (2019) report on a very dense star-forming region (with mass $10^6 M_\odot$ and radius < 13 pc) at the centre of D1, which fully qualifies as a young stellar cluster. In the current analysis, no such system is present in our simulation.

The intrinsic SFR derived for D1 from the SED-fitting at 3 σ ranges between $0.4 M_\odot/\text{yr}$ and $\sim 78 M_\odot/\text{yr}$, whereas the best value is $15.8 M_\odot/\text{yr}$ (Vanzella et al. 2019). This value is the result of a SED-fitting analysis, showing degenerate solutions for stellar mass, age, and SFRs (Vanzella et al. 2019).

Considering the tentative [CII] detection of D1 performed with ALMA, resulting in a [CII] luminosity $L_{\text{CII}} = 2.9 \times 10^6 L_\odot$ (Calura et al. 2021), such a high SFR causes D1 to deviate significantly

from the tight SFR- L_{CII} relation observed in high-redshift systems (Carniani et al. 2018). The final SFR value of the simulated systems is lower than the best value reported by Vanzella et al. (2019) by more than two orders of magnitude. Were the SFR of D1 of the same order of magnitude as our predicted value, this would make it much more consistent with other high-redshift systems in the observed SFR- L_{CII} relation and alleviate the discrepancy reported by Calura et al. (2021).

In the simulations, a non-negligible fraction of the stellar mass is present in a low-density component, which is the elongated structure visible in Fig. 9. It is expected that, due to its low surface brightness, such a structure will be undetected in observations. As for the mutual distance between the stellar clumps, in our simulations it can vary much from very low values in the case of tight interactions (right panel of Fig. 9) up to a few 10 kpc, in case of the systems at the farthest distances from the centre. In the case of the real systems, estimating the physical distance at large separations is problematic due to the strong variations of the magnification parameter μ throughout the observed field. Vanzella et al. (2017a) report on a source at the same redshift of D1 (as measured from the Lyman- α emission), with an optical counterpart co-spatial with the line emission dislocated at 27 kpc from it in the source plane. Moreover, for the physical separations between the individual sources with confirmed redshift, Vanzella et al. (2019) suggest values of several tens of kpc. These values are qualitatively in agreement with our results. The reconstruction of the morphology and position of the star-forming knots on the source plane required deep MUSE observations (Vanzella et al. 2021a) and is still in progress. Further analysis of the datasets will be presented in a forthcoming work (Mestric et al., in preparation) and will foster a more quantitative comparison between the D1+T1 complex and simulations.

3.4 Discussion

Despite the high densities resolved in our simulation due to the adopted maximum resolution, the stellar aggregates do not reach extreme values in terms of density. This is in disagreement with what found in other studies.

By means of a smoothed particle hydrodynamics code, Kim et al. (2018) used cosmological simulations with minimum force resolution $1.4 h^{-1}$ pc to study the formation of bound clusters in a halo of virial mass $\sim 10^{10} M_\odot$ down to $z \sim 5$. The adopted star formation threshold is of 500 cm^3 and the simulation includes feedback from radiation pressure, stellar winds and energy and momentum deposition from SNe, all IMF-averaged and in a model with a Kroupa (2001) IMF. They found that most stars are in loosely bound associations characterised by surface density $\sim 1 M_\odot \text{ pc}^{-2}$. They interpret this diffuse component as composed by associations that inherit the properties of the parent molecular clouds, only marginally gravitationally bound after turning a few percent of their mass into stars. A smaller fraction of the stellar mass is represented by self-gravitating bound clusters that survive for long times (they are still present at the end of the simulation) and with surface density $\sim 10^3 M_\odot \text{ pc}^{-2}$. Although these systems represent a minority, they have masses $10^6 M_\odot$ and sizes of ~ 10 pc, compatible with local star clusters (Krumholz et al. 2019).

In a subsequent study and with a similar setup, Ma et al. (2020) found a larger population of these dense systems in a series of simulations targeting DM halos with virial masses between $\sim 10^{10} M_\odot$ and $\sim 10^{12} M_\odot$. They found a significant population of bound clusters with masses between $10^{3.5} M_\odot$ and $10^{8.5} M_\odot$ and half-mass radii typically between 6 pc and 40 pc.

In the work of [Kimm et al. \(2016\)](#), performed with RAMSES and characterised by comparable resolution (although the simulations are carried on until $z \sim 10$ and without modelling feedback from single stars), very compact systems (with size ≤ 1 pc) with typical mass $\sim 6 \times 10^5 M_\odot$ were found, therefore with densities comparable to the ones of local globular clusters. This work adopts a density threshold for star formation of 10^5 cm^{-3} and different feedback prescriptions than in our work. These include (1) a pre-SN stellar feedback in the form of ionizing photons from massive stars, heating the cold gas to 2×10^4 K, (2) deposition of momentum (with no shutdown of radiative cooling) in the cells occupied by the newly formed stellar particles and (3) SN explosions, in a model with a [Kroupa \(2001\)](#) IMF. The pre-SN stellar feedback is weaker than the one adopted here (i.e. the 'delayed cooling'). In fact, as discussed in [Rosdahl et al. \(2017\)](#), by neglecting radiative cooling even for short times, delayed cooling results in overefficient feedback with respect to other schemes. While in our model, due to the strong feedback, the collapse of the gas clouds is arrested at the onset of star formation, the scheme adopted by [Kimm et al. \(2016\)](#) allows for further collapse of the cold clouds. This contributes to attain high stellar densities at the onset of SN explosions, which represent the events eventually arresting the star formation episodes. Due to the similar setup and resolution but different physical ingredients, the simulation of [Kimm et al. \(2016\)](#) represents the best case for a fair comparison with the one presented in this work. In the future, a deeper investigation of the main parameters regulating star formation and feedback will be performed, in order to investigate further in which conditions the dominant star formation mode occurs in dense and loosely bound stellar aggregates.

3.4.1 Size-Mass relation

In order to gain further insight on the properties of our clumps compared to observations and analogs in the nearby Universe, we examine one fundamental scaling relation between two structural parameters of these systems, i. e. the size vs mass relation, shown in Fig. 12. The sizes of the simulated clumps are compared with observational datasets from the literature.

[Bouwens et al. \(2021\)](#) presented a sample of faint galaxies with photometric redshifts in the range $6 \leq z \leq 8$ magnified by the Hubble Frontier Fields clusters. Their sample includes 330 galaxies with size and mass measurements obtained by means of various public models for the gravitational lenses. Their objects have stellar mass in the range $10^5 M_\odot \leq M_* \leq 10^8 M_\odot$ and effective radii R_e , in the range $10 \text{ pc} \leq R_e \leq 1000 \text{ pc}$. The data of [Bouwens et al. \(2021\)](#) (red circles in Fig. 12) build a clear, positive correlation in the size-mass plot. Due to their extended ranges of size and mass, the lensed sources are broadly classified in the category of 'star cluster complexes', similar to the local example of 30 Doradus, an extended HII complex with an estimated mass of $10^6 M_\odot$ and size of 100 pc located in the Large Magellanic Cloud ([Lebouteiller et al. 2008](#)). This classification is performed in order to distinguish them from regular star clusters, whose size-mass relation is much debated, with a nearly flat behaviour as found in the LEGUS sample of local dwarf and spiral star-forming galaxies ([Ryon et al. 2018](#), see also [Krumholz et al. 2019](#)). One possible interpretation for the extended sizes of the lensed sources is that they might comprise groups of star clusters, appearing in observed fields as blended together into one single object, although it is not possible to exclude that at high redshift, star clusters, and stellar aggregates in general, might follow a size-mass relation different than the local one. In Fig. 12, we also show a subset of clumps at $z \gtrsim 6$ from [Mestric et al. \(2022\)](#) and

a compilation of local objects collected by [Norris et al. \(2014\)](#), which include a variety of systems, i.e., besides globular cluster, it comprises spheroids, dwarf ellipticals, ultra-compact dwarfs and dwarf spheroidals (see [Norris et al. 2014](#) for further details on the compilation).

For the calculation of the size of the simulated clumps, we have considered three different projections, i. e. along the x-, y- and z-axis. For each clump, the green circle represents the median value of the three projections, whereas the error bar is computed from the distance between the minimum and the maximum size.

The simulated clumps present sizes significantly larger and a flatter size-mass relation than the lensed sources, building an intermediate sequence between high- z clumps and local dSph galaxies.

Some clumps present non-spherical shapes, in particular in the central region, where tidal distortions are frequent, as visible also from the extended distributions of stars (see the bottom panel of Fig. 9). From a preliminary analysis performed assuming non-spherical radial bins, the deviations from sphericity of the clumps has negligible impact on the size-mass relation. The flattening of the clumps will be analysed in detail in a forthcoming work ([Pascale et al.](#), in prep.).

It is worth stressing that the bridging of dense clumps represents a major downside of friends-of-friends approaches with a potential non-negligible impact on the size-mass relation, since some groups can be interpreted as very extended clumps rather than multiple, more compact clumps. In a forthcoming paper, we will address this issue in detail, with special care on the central region, where we will test the robustness of our results against the adopted linking length and compare the results obtained with foF with other clump identification tools ([Pascale et al.](#), in prep.).

Moreover, the clump segmentation has been performed in the three-dimensional space, whereas the sizes have been calculated as half-mass radii, considering 2D projections, which might seem inconsistent. However, for the chosen viewing angles and eliminating the central region from the clump identification, the clumps never overlap in projection, so we expect foF and other clustering tools to identify the same number of clumps.

In the future, we will investigate more in detail the effects of stellar feedback and other baryonic processes on the slope of the size-mass relation. A more complete study of the main scaling relations of the simulated clumps and a more thorough comparison with extended observational datasets of lensed clumps ([Mestric et al. 2022](#)) (including also the calculation of the surface brightness of the simulated systems) will be presented in a forthcoming work.

4 SUMMARY AND CONCLUSIONS

The aim of this work is to present the first results obtained with a new set of zoom-in cosmological simulations with unprecedented features. To our knowledge, our cosmological simulations are among the first ever performed with a sub-pc resolution, carried on down to $z \sim 6.1$ (i.e. for a cosmic time interval of 0.9 Gyr) and including the feedback of individual stars. The model is originally designed to model the spectroscopically-confirmed, lensed star-forming complex D1+T1 observed at $z = 6.14$ ([Vanzella et al. 2019](#); [Calura et al. 2021](#)), which includes several clumps, distributed across a few 10 kpc - wide region. One of the detected star-forming knots presents a very dense region at its centre, with density fully compatible with the values expected in a proto-globular cluster. The aim to probe substructures within the first, compact clumps represents the main motivation for adopting a sub-pc resolution.

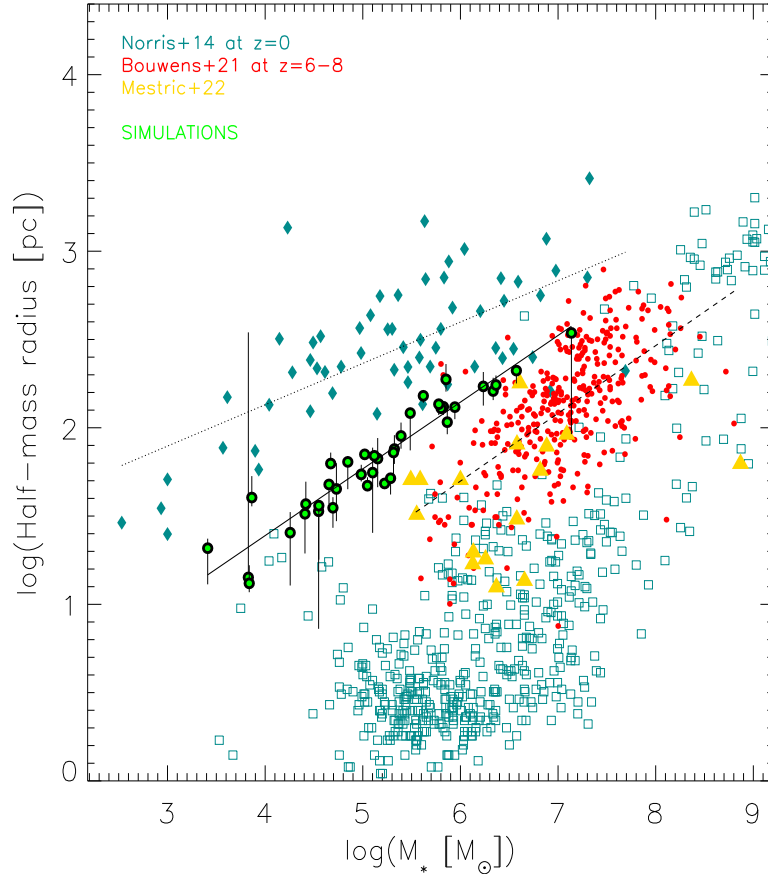


Figure 12. Relation between stellar mass and size for the stellar clumps identified in our high-resolution simulation (solid green circles) compared to observational datasets from the literature. For each clump, its size is computed from the half-mass radius of its stellar surface density profile, considering three different viewing angles, i. e. along the x-, y- and z-axis. The green circles represents the median values calculated considering the three projections, whereas, for each clump, the error bar is computed from the distance between the minimum and the maximum size. The other symbols are observational values from a sample of lensed faint galaxies with photometric redshifts in the range $6 \leq z \leq 8$ (Bouwens et al. 2021, red solid circles), a set of spectroscopically confirmed lensed clumps at $z \gtrsim 6$ (Mestric et al. 2022, yellow triangles) and from an extended local sample which includes globular clusters, spheroids, dwarf ellipticals, ultra-compact dwarfs and dwarf spheroidals (Norris et al. 2014, dark cyan symbols). The dark cyan solid diamonds represent local dwarf spheroidals, whereas the open squares indicate all the other local systems. The solid, dotted and dashed lines represent linear fits (expressed by $y = a + b \cdot x$) to the relations of the simulated clumps (with $a = -0.12$, $b = 0.38$) the dSphs of Norris et al. (2014) (with $a = 1.19$, $b = 0.23$) and the lensed systems of Bouwens et al. (2021) ($a = -0.6$, $b = 0.38$), respectively.

The target DM halo is characterised by a maximum mass resolution of $200 M_{\odot}$ and 2×10^8 collisionless particles. The simulations include star formation and can track the energy, mass and metals deposited by individual massive stars and AGB with mass $\geq 3 M_{\odot}$. The generation of single stars occurs via stochastic, direct IMF sampling, following the method presented in Sormani et al. (2017) (see also Andersson et al. 2020), whereas low-mass (i.e. with mass $< 3 M_{\odot}$) stars are stored into standard stellar particles. This choice was performed to limit the total number of stellar particles. As for massive stars, we take into account both pre-SN and SN feedback. In both cases, these sources deposit instantly variable amounts of mass and energy, proportional to their initial mass. Our model represents a simplified feedback scheme designed to account for the effects of pre-SN and SN feedback. We adopt a ‘delayed cooling’ feedback scheme similar to Teyssier et al. (2013) to prevent artificial radiative loss of the energy injected by the stars. In this scheme, radiative cooling is temporarily switched off in suitable cells where the feedback is stored also in a passive tracer, advected with the flow and

aimed to represent an unresolved, ‘non-thermal’ energy component. The native delayed cooling implementation (Teyssier et al. 2013) was created to model stellar particles in lower resolution runs and is unsuited to our case, where the non-thermal energy deposited in a single cell can be very small and, at the same time, the gas can be very dense. We propose a simple, versatile recipe to overcome this issue, in which the flag used for switching off radiative cooling is posed equal to its maximum value as soon as any star releases energy, and relying on the standard implementation to account for the fast dissipation of the non-thermal energy. At our maximum resolution, our feedback implementation is efficient in regulating star-formation, but in the future, it needs to be improved in various aspects, which include a more gradual release of energy in the pre-SN phase in the form of stellar winds, ionization and injection of momentum.

We hope that the proposed approach may be useful in future studies including individual stellar feedback in grid codes. Our main results can be summarised as follows.

- The onset of star formation occurs in dense ($\Sigma_{\text{gas}} > 10^2 \text{M}_{\odot}/\text{pc}^2$) gas clumps lying at the centres of networks of low-pressure, cold (with typical temperatures of $\sim 10^3 \text{K}$) and elongated filaments with surface densities $\sim 1 \text{M}_{\odot}/\text{pc}^2$. The sites where star formation ignites are characterised by maximum densities of the order of 10^5cm^{-3} and pressure values $P_{\text{grav}}/k > 10^7 \text{K}/\text{cm}^3$, corresponding to the pressures of the local, turbulent regions where the densest stellar aggregates form (Elmegreen & Efremov 1997). In our highest resolution run, the thin, pc-wide dense shells of the energetic bubbles generated by a handful of individual massive stars can be resolved. Our feedback scheme correctly accounts for the SN-driven, hot gas with characteristic temperature $> 10^6 \text{K}$.

- Due to the high resolution, our simulation allows us to resolve stellar populations with age differences smaller than 1 Myr. The first stars originate in scattered, loosely-bound aggregates. As cosmic time evolves, more and more stellar clumps form at the centre of the DM halos with mass density $> 10^2 \text{M}_{\odot}/\text{pc}^2$ and larger and larger volumes are enriched with metals due to exploding SNe. Typically, the maximum metallicity is $Z \sim 10^{-3}$, reached in regions where the largest stellar clumps (of mass $\sim 10^6 \text{M}_{\odot}$) are located. The total SFR increases with cosmic time, to reach the value of $0.1 \text{M}_{\odot}\text{yr}^{-1}$ at the endpoint of our simulation ($z = 6.14$, corresponding to a cosmic time of 0.92 Gyr).

- The total stellar mass at $z = 6.14$ is $3.4 \times 10^7 \text{M}_{\odot}$, in satisfactory agreement with the observed stellar mass of the D1+T1 system ($2.3 \times 10^7 \text{M}_{\odot}$) and considering that other fainter star-forming knots at the same redshift are known to be part of the observed star-forming complex (Vanzella et al. 2019). The simulated highest mass clumps have sizes (as measured from their stellar surface profiles) of $\sim 100 \text{pc}$. On the other hand, the measured half-light radius of D1 is 44 pc. The average stellar density of the simulated clumps is therefore lower by ~ 1 order of magnitudes than the observed ones. No simulated clump shows any presence of significantly denser stellar sub-structures, whereas a very dense stellar system, (characterised by mass 10^6M_{\odot} and radius $< 13 \text{pc}$) is reported at the centre of D1 (Vanzella et al. 2019). The total SFR of the simulated system is more than two orders of magnitude lower than the observed best value ($15.8 \text{M}_{\odot}/\text{yr}$, Vanzella et al. 2019), which is however affected by several systematic uncertainties related to the magnification and fitting procedure. Were the SFR of D1 of the same order of magnitude as the total SFR of our simulations, this would alleviate the significant deviation of D1 from the observed SFR- L_{CII} relation (Carniani et al. 2018) reported by Calura et al. (2021).

- The study of the size-mass relation is useful to compare the properties of our clumps with possible observational analogues at both high redshift and in the local Universe. We have calculated the size of the simulated clumps as half-mass radii, considering 2D mass distributions and considering three different projections, i. e. along the x-, y- and z-axis. We compared our results with the ones from samples of faint galaxies with photometric redshifts in the range $6 \leq z \leq 8$ magnified by the Hubble Frontier Fields clusters (Bouwens et al. 2021) and a compilation of local objects which include a variety of systems (GCs, spheroids and dwarf galaxies of various types, Norris et al. 2014). The simulated clumps present larger sizes than the ones of the lensed clumps, building an intermediate sequence (in both terms of slope and normalization) between high-redshift systems and local dSph galaxies. In a forthcoming paper, we will address how some issues of clumps identification and segmentation (such as bridging of dense clumps) affect their properties, comparing the results obtained with fof with other clump identification tools (Pascale et al., in prep.).

On the observational side, efforts are in progress to collect larger and larger catalogues of high-redshift clumps where various parameters can be measured, including mass, size and SFR (Mestric et al. 2022). These studies will be fundamental drivers for our future work, which will focus on a more complete study of the main scaling relations of the simulated clumps and a more thorough comparison with the observational datasets. Stellar feedback plays a key role in the formation and evolution of stellar structures. Other simulations with different stellar feedback see the early formation of dense stellar clusters at the centre of DM halos (Kimm et al. 2016, Kim et al. 2018). Mass loss from stellar winds and supernova feedback causes also a significant expansion of young stellar clusters (e. g., Baumgardt et al. 2008; Ma et al. 2020; Vesperini et al. 2021; Sollima 2021). The role of these processes and those of the early dynamical evolution need to be investigated in detail, along with their effects on the structural properties and the scaling relations of compact stellar systems.

DATA AVAILABILITY

The data underlying this article are available from the corresponding author, upon reasonable request.

ACKNOWLEDGEMENTS

We are grateful to an anonymous referee for several useful suggestions. We acknowledge support from PRIN INAF 1.05.01.85.01 and INAF Main-Stream 1.05.01.86.31. AL acknowledges funding from MIUR under the grant PRIN 2017-MB8AEZ. EVa, MM and PR acknowledge support from PRIN-MIUR 2017WSCC32. EVE acknowledges support from NSF grant AST-2009193. This research was supported in part by Lilly Endowment, Inc., through its support for the Indiana University Pervasive Technology Institute.

REFERENCES

- Agertz O., Kravtsov A. V., Leitner S. N., Gnedin N. Y., 2013, *ApJ*, 770, 25
 Agertz O., Kravtsov A. V., 2015, *ApJ*, 804, 18
 Agertz O., Pontzen A., Read J. I., Rey M. P., Orkney M., Rosdahl J., Teyssier R., et al., 2020, *MNRAS*, 491, 1656
 Andersson E. P., Agertz O., Renaud F., 2020, *MNRAS*, 494, 3328
 Arzoumanian D., André P., Didelon P., Könyves V., Schneider N., Men'shchikov A., Soubie T., et al., 2011, *A&A*, 529, L6
 Bacon R., Accardo M., Adjali L., Anwand H., Bauer S., Biswas I., Blaizot J., et al., 2010, *SPIE*, 7735, 773508
 Barkana R., Loeb A., 2001, *PhR*, 349, 125
 Baumgardt H., Kroupa P., Parmentier G., 2008, *MNRAS*, 384, 1231
 Behroozi P., Wechsler R. H., Hearin A. P., Conroy C., 2019, *MNRAS*, 488, 3143
 Bergamini P., Rosati P., Mercurio A., Grillo C., Caminha G. B., Meneghetti M., Agnello A., et al., 2019, *A&A*, 631, A130
 Bergamini P., Rosati P., Mercurio A., Grillo C., Caminha G. B., Meneghetti M., Agnello A., et al., 2019, *A&A*, 631, A130
 Bleuler A., Teyssier R., 2014, *MNRAS*, 445, 4015
 Bournaud F., Elmegreen B. G., Teyssier R., Block D. L., Puerari I., 2010, *MNRAS*, 409, 1088
 Bouwens R. J., Illingworth G. D., van Dokkum P. G., Ribeiro B., Oesch P. A., Stefanon M., 2021, *AJ*, 162, 255
 Bryan G. L., Norman M. L., 1998, *ApJ*, 495, 80
 Caimmi R., 2015, arXiv, arXiv:1504.07730
 Calura F., Few C. G., Romano D., D'Ercole A., 2015, *ApJL*, 814, L14
 Calura F., Bellazzini M., D'Ercole A., 2020, *MNRAS*, 499, 5873

- Calura F., Vanzella E., Carniani S., Gilli R., Rosati P., Meneghetti M., Paladino R., et al., 2021, *MNRAS*, 500, 3083
- Castor J., McCray R., Weaver R., 1975, *ApJL*, 200, L107
- Carniani S., Maiolino R., Amorin R., Pentericci L., Pallottini A., Ferrara A., Willott C. J., et al., 2018, *MNRAS*, 478, 1170
- Chevance M., Kruijssen J. M. D., Vazquez-Semadeni E., Nakamura F., Klessen R., Ballesteros-Paredes J., Inutsuka S.-. ichiro ., et al., 2020, *SSRv*, 216, 50
- Costa T., Rosdahl J., Sijacki D., Haehnelt M. G., 2018, *MNRAS*, 479, 2079
- Cummings J. D., Kalirai J. S., Tremblay P.-E., Ramirez-Ruiz E., Choi J., 2018, *ApJ*, 866, 21
- De Looze I., Cormier D., Leboutteiller V., Madden S., Baes M., Bendo G. J., Boquien M., et al., 2014, *A&A*, 568, A62
- Dobbs C. L., Krumholz M. R., Ballesteros-Paredes J., Bolatto A. D., Fukui Y., Heyer M., Low M.-M. M., et al., 2014, *prpl.conf*, 3
- Dubois Y., Volonteri M., Silk J., Devriendt J., Slyz A., Teyssier R., 2015, *MNRAS*, 452, 1502
- Eisenstein D. J., Hut P., 1998, *ApJ*, 498, 137. doi:10.1086/305535
- Elmegreen D. M., Elmegreen B. G., 2017, *ApJL*, 851, L44
- Elmegreen B. G., Efremov Y. N., 1997, *ApJ*, 480, 235
- Elmegreen B. G., Efremov Y., Pudritz R. E., Zinnecker H., 2000, *prpl.conf*, 179
- Emerick A., Bryan G. L., Mac Low M.-M., 2019, *MNRAS*, 482, 1304
- Farcy M., Rosdahl J., Dubois Y., Blaizot J., Martin-Alvarez S., 2022, *MNRAS*, 513, 5000
- Few C. G., Courty S., Gibson B. K., Michel-Dansac L., Calura F., 2014, *MNRAS*, 444, 3845
- Fiacconi D., Mayer L., Madau P., Lupi A., Dotti M., Haardt F., 2017, *MNRAS*, 467, 4080
- Fierlinger K. M., Burkert A., Ntormousi E., Fierlinger P., Schartmann M., Ballone A., Krause M. G. H., et al., 2016, *MNRAS*, 456, 710
- Fichtner Y. A., Grassitelli L., Romano-Díaz E., Porciani C., 2022, *MNRAS*, 512, 4573
- Geen S., Hennebelle P., Tremblin P., Rosdahl J., 2016, *MNRAS*, 463, 3129
- Grand R. J. J., Gómez F. A., Marinacci F., Pakmor R., Springel V., Campbell D. J. R., Frenk C. S., et al., 2017, *MNRAS*, 467, 179
- Grisdale K., Agertz O., Renaud F., Romeo A. B., Devriendt J., Slyz A., 2019, *MNRAS*, 486, 5482
- Guillet T., Teyssier R., 2011, *JCoPh*, 230, 4756
- Gutcke T. A., Pakmor R., Naab T., Springel V., 2021, *MNRAS*, 501, 5597
- Gutcke T. A., Pakmor R., Naab T., Springel V., 2022, *MNRAS*, 513, 1372
- Haardt F., Madau P., 1996, *ApJ*, 461, 20
- Hahn O., Abel T., 2011, *MNRAS*, 415, 2101
- Hopkins P. F., Murray N., Quataert E., Thompson T. A., 2010, *MNRAS*, 401, L19
- Hu C.-Y., Naab T., Glover S. C. O., Walch S., Clark P. C., 2017, *MNRAS*, 471, 2151
- Inoue A. K., 2012, *arXiv*, arXiv:1202.2932
- Karman W., Caputi K. I., Caminha G. B., Gronke M., Grillo C., Balestra I., Rosati P., et al., 2017, *A&A*, 599, A28
- Katz N., 1992, *ApJ*, 391, 502
- Kim C.-G., Ostriker E. C., 2015, *ApJ*, 802, 99
- Kimm T., Cen R., Rosdahl J., Yi S. K., 2016, *ApJ*, 823, 52
- Kim J.-h., Ma X., Grudić M. Y., Hopkins P. F., Hayward C. C., Wetzel A., Faucher-Giguère C.-A., et al., 2018, *MNRAS*, 474, 4232
- Kroupa P., 2001, *MNRAS*, 322, 231
- Kruijssen J. M. D., 2014, *CQGra*, 31, 244006
- Krumholz M. R., McKee C. F., Bland-Hawthorn J., 2019, *ARA&A*, 57, 227
- Lacchin E., Calura F., Vesperini E., 2021, *MNRAS*, 506, 5951
- Lahén N., Naab T., Johansson P. H., Elmegreen B., Hu C.-Y., Walch S., Steinwandel U. P., et al., 2020, *ApJ*, 891, 2
- Larson R. B., 1981, *MNRAS*, 194, 809
- Leboutteiller V., Bernard-Salas J., Brandl B., Whelan D. G., Wu Y., Charmandaris V., Devost D., et al., 2008, *ApJ*, 680, 398
- Livermore R. C., Finkelstein S. L., Lotz J. M., 2017, *ApJ*, 835, 113
- Lotz J. M., Koekemoer A., Coe D., Grogan N., Capak P., Mack J., Anderson J., et al., 2017, *ApJ*, 837, 97
- Lupi A., Volonteri M., Decarli R., Bovino S., Silk J., Bergeron J., 2019, *MNRAS*, 488, 4004
- Ma X., Hayward C. C., Casey C. M., Hopkins P. F., Quataert E., Liang L., Faucher-Giguère C.-A., et al., 2019, *MNRAS*, 487, 1844
- Ma X., Grudić M. Y., Quataert E., Hopkins P. F., Faucher-Giguère C.-A., Boylan-Kolchin M., Wetzel A., et al., 2020, *MNRAS*, 493, 4315
- Maio U., Ciardi B., Yoshida N., Dolag K., Tornatore L., 2009, *A&A*, 503, 25
- Meneghetti M., Natarajan P., Coe D., Contini E., De Lucia G., Giocoli C., Acebron A., et al., 2017, *MNRAS*, 472, 3177
- Meštrić U., Vanzella E., Zanella A., Castellano M., Calura F., Rosati P., Bergamini P., et al., 2022, *arXiv*, arXiv:2202.09377
- Molina J., Ibar E., Godoy N., Escala A., Michiyama T., Cheng C., Hughes T. M., et al., 2020, *A&A*, 643, A78
- Murray N., Quataert E., Thompson T. A., 2010, *ApJ*, 709, 191
- Murray N., 2011, *ApJ*, 729, 133
- Norris M. A., Kannappan S. J., Forbes D. A., Romanowsky A. J., Brodie J. P., Faifer F. R., Huxor A., et al., 2014, *MNRAS*, 443, 1151
- Omori Y., Giannantonio T., Porredon A., Baxter E. J., Chang C., Croce M., Fosalba P., et al., 2019, *PhRvD*, 100, 043501
- Padoan P., Juvela M., Goodman A. A., Nordlund Å., 2001, *ApJ*, 553, 227
- Portinari L., Chiosi C., Bressan A., 1998, *A&A*, 334, 505
- Rasera Y., Teyssier R., 2006, *A&A*, 445, 1
- Renaud F., Bournaud F., Emsellem E., Elmegreen B., Teyssier R., Alves J., Chapon D., et al., 2013, *MNRAS*, 436, 1836
- Renzo M., Ott C. D., Shore S. N., de Mink S. E., 2017, *A&A*, 603, A118
- Rodríguez-Puebla A., Primack J. R., Avila-Reese V., Faber S. M., 2017, *MNRAS*, 470, 651
- Rosdahl J., PhD Thesis, <https://www.theses.fr/2012LYO10075.pdf>
- Rosdahl J., Schaye J., Dubois Y., Kimm T., Teyssier R., 2017, *MNRAS*, 466, 11
- Rosdahl J., Katz H., Blaizot J., Kimm T., Michel-Dansac L., Garel T., Haehnelt M., et al., 2018, *MNRAS*, 479, 994
- Rosen A. L., Lopez L. A., Krumholz M. R., Ramirez-Ruiz E., 2014, *MNRAS*, 442, 2701
- Ryon J. E., Gallagher J. S., Smith L. J., Adamo A., Calzetti D., Bright S. N., Cignoni M., et al., 2017, *ApJ*, 841, 92
- Salpeter, E.E., 1955, *ApJ*, 121, 161
- Sawala T., Frenk C. S., Fattahi A., Navarro J. F., Bower R. G., Crain R. A., Dalla Vecchia C., et al., 2016, *MNRAS*, 457, 1931
- Schaye J., Crain R. A., Bower R. G., Furlong M., Schaller M., Theuns T., Dalla Vecchia C., et al., 2015, *MNRAS*, 446, 521
- Schmidt M., 1959, *ApJ*, 129, 243
- Sharov G. S., Vorontsova E. G., 2014, *JCAP*, 2014, 057
- Shetty R., Collins D. C., Kauffmann J., Goodman A. A., Rosolowsky E. W., Norman M. L., 2010, *ApJ*, 712, 1049
- Smith M. C., 2021, *MNRAS*, 502, 5417
- Sollima A., 2021, *MNRAS*, 502, 1974
- Sormani M. C., Treß R. G., Klessen R. S., Glover S. C. O., 2017, *MNRAS*, 466, 407
- Steinwandel U. P., Moster B. P., Naab T., Hu C.-Y., Walch S., 2020, *MNRAS*, 495, 1035
- Sukhbold T., Ertl T., Woosley S. E., Brown J. M., Janka H.-T., 2016, *ApJ*, 821, 38. doi:10.3847/0004-637X/821/1/38
- Sun G., Furlanetto S. R., 2016, *MNRAS*, 460, 417
- Sun J., Leroy A. K., Schrubba A., Rosolowsky E., Hughes A., Kruijssen J. M. D., Meidt S., et al., 2018, *ApJ*, 860, 172
- Terlevich R., Melnick J., Terlevich E., Chávez R., Telles E., Bresolin F., Plionis M., et al., 2016, *A&A*, 592, L7
- Teyssier R., 2002, *A&A*, 385, 337
- Teyssier R., Pontzen A., Dubois Y., Read J. I., 2013, *MNRAS*, 429, 3068
- Thacker R. J., Couchman H. M. P., 2000, *ApJ*, 545, 728. doi:10.1086/317828
- Truelove J. K., Klein R. I., McKee C. F., Holliman J. H., Howell L. H., Greenough J. A., 1997, *ApJL*, 489, L179. doi:10.1086/310975
- Vanzella E., Calura F., Meneghetti M., Mercurio A., Castellano M., Caminha G. B., Balestra I., et al., 2017a, *MNRAS*, 467, 4304
- Vanzella E., Castellano M., Meneghetti M., Mercurio A., Caminha G. B., Cupani G., Calura F., et al., 2017b, *ApJ*, 842, 47

Vanzella E., Calura F., Meneghetti M., Castellano M., Caminha G. B., Mercurio A., Cupani G., et al., 2019, *MNRAS*, 483, 3618
 Vanzella E., Caminha G. B., Rosati P., Mercurio A., Castellano M., Meneghetti M., Grillo C., et al., 2021, *A&A*, 646, A57
 Vanzella E., Adamo A., Annibali F., Annunziatella M., Bartosch Caminha G., Bergamini P., Calura F., et al., 2021, *iwst.prop*, 1908
 Vesperini E., Hong J., Giersz M., Hypki A., 2021, *MNRAS*, 502, 4290
 Vincenzo F., Matteucci F., Belfiore F., Maiolino R., 2016, *MNRAS*, 455, 4183
 Vogelsberger M., Marinacci F., Torrey P., Puchwein E., 2020, *NatRP*, 2, 42
 Wall J. E., Mac Low M.-M., McMillan S. L. W., Klessen R. S., Portegies Zwart S., Pellegrino A., 2020, *ApJ*, 904, 192
 Wanajo S., Müller B., Janka H.-T., Heger A., 2018, *ApJ*, 852, 40
 Weaver R., McCray R., Castor J., Shapiro P., Moore R., 1977, *ApJ*, 218, 377
 Wetzel A. R., Hopkins P. F., Kim J.-hoon., Faucher-Giguère C.-A., Kereš D., Quataert E., 2016, *ApJL*, 827, L23
 Wise J. H., Turk M. J., Norman M. L., Abel T., 2012, *ApJ*, 745, 50
 Woosley S. E., Weaver T. A., 1995, *ApJS*, 101, 181
 Yaghoobi A., Calura F., Rosdahl J., Haghi H., 2022, *MNRAS*, 510, 4330
 Zhu Q., Li Y., Li Y., Maji M., Yajima H., Schneider R., Hernquist L., 2020, arXiv, arXiv:2012.01458

APPENDIX A: PROPERTIES OF OTHER STELLAR CLUMPS

In Figures A1, A2 and A3 we present other cases of stellar clumps identified with *fof* and the properties of the gas surrounding them. Clumps 2 and 3 have similar mass and overall structure, but occupy different positions in the box, as clump 2 is near the centre and clump 3 is 10 kpc away from it. It is interesting to compare their properties, remarkably similar in terms of stellar age, gas density, pressure and metallicity despite the different environment surrounding them. Clump 5 is the most massive ($M_* = 3.48 \times 10^6 M_\odot$) and has older stars than the other cases and a significantly smaller structure (with mass $M_* \sim 2 \times 10^4 M_\odot$) besides, visible on the right side of Fig. A3.

APPENDIX B: PHASE DIAGRAMS

In Fig B1 we show two phase diagrams (i.e. gas temperature vs density) calculated at two different redshifts. These plots are useful to address the issue of artificial fragmentation, a problem common to star formation simulations, where the cold gas may reach particularly high densities. Gas simulations where the Jeans length, defined as

$$\lambda_J = \left(\frac{\pi c_s^2}{G\rho} \right)^{1/2} \quad (\text{B1})$$

(where c_s is the sound speed), is under-resolved experience the phenomenon of artificial fragmentation, in which perturbations arising from the discrete nature of the equations of self-gravitational hydrodynamics can grow into non-physical clumps. Truelove et al. (1997) demonstrated that the condition in which artificial clumps are avoided is when $\lambda_J \geq 4\Delta x$, where Δx is the minimum cell width. The black diagonal lines in Fig. B1 represent the analytic relation between T and ρ obtained by requiring that the Jeans length is resolved by at least 4 cells

$$T_{Jeans} \geq \frac{\rho}{m_H} \left(\frac{4\Delta x}{16 pc} \right)^2. \quad (\text{B2})$$

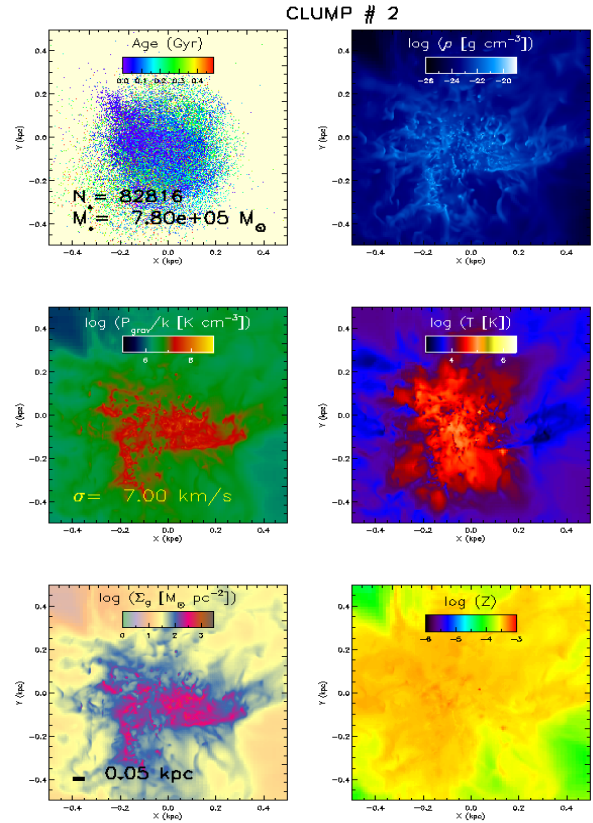


Figure A1. Main properties of clump 2 of Fig. 9 and slice maps of various properties of the gas, each one centered on the centre of mass of the clump. Panels as in Fig. 10.

The fraction of cells where the Jeans length is not resolved is reported in both panels of Fig. B1. At $z = 6.14$, this fraction is 3×10^{-6} .

APPENDIX C: STELLAR IMF

In our simulations we follow stellar particles, representing populations of low-mass stars (i. e. with initial mass $< 3 M_\odot$) and individual stars, with mass $> 3 M_\odot$. In Fig. C1 we show the initial mass function of individual stars obtained in our simulation, compared with the one of Kroupa (2001) in the same mass range. The IMF is slightly top-heavier than the Kroupa (2001), with an actual number of MS ~ 1.2 times the one expected with the base IMF. The mass fractions in the AGB and SNe ranges are reported, along with the deviations from the base IMF. In both ranges, deviations from the Kroupa (2001) IMF are close to 10 %.

This paper has been typeset from a \LaTeX file prepared by the author.

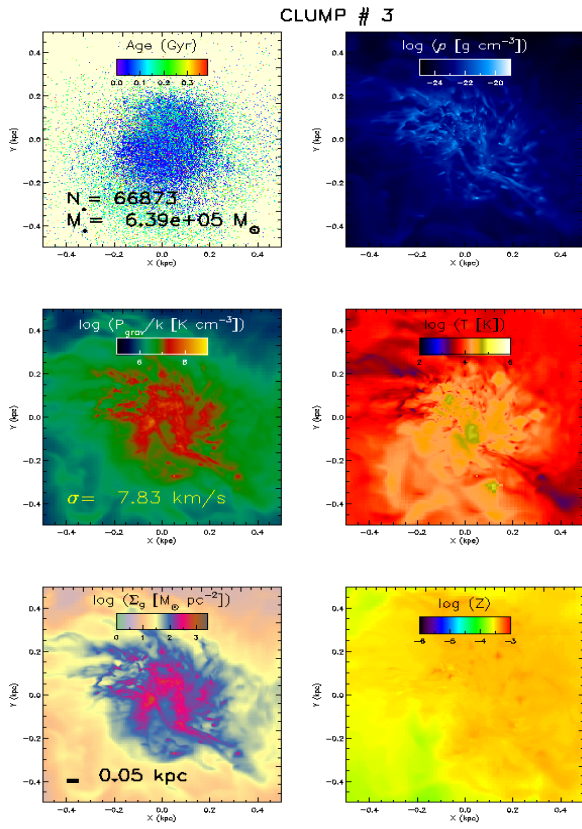


Figure A2. Main properties of clump 3 of Fig. 9 and slice maps of various properties of the gas, each one centered on the centre of mass of the clump. Panels as in Fig. 10.

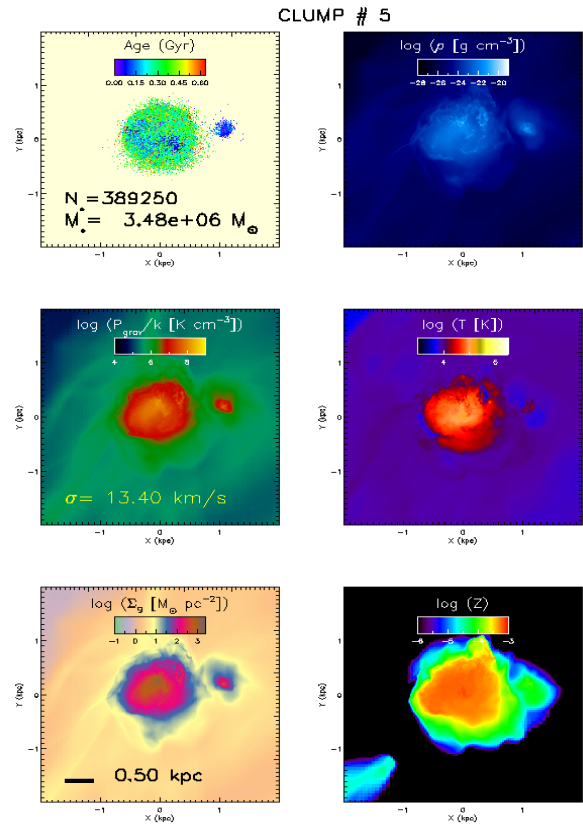


Figure A3. Main properties of clump 5 of Fig. 9 and slice maps of various properties of the gas, each one centered on the centre of mass of the clump. Panels as in Fig. 10.

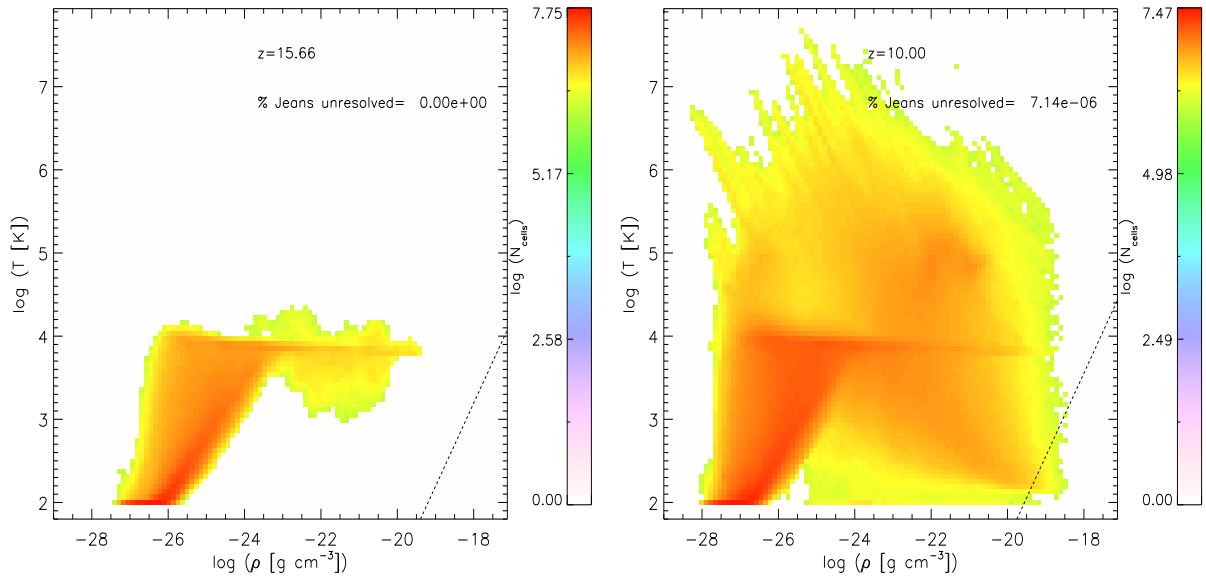


Figure B1. Temperature–density phase diagrams at $z = 15.66$ (left) and $z = 10$ (right) in our highest resolution simulation. The color scale indicates the number of cells. The diagonal black dashed lines indicate the analytic relation between T and ρ obtained by requiring that the Jeans length is resolved by at least 4 cells. In each panel, the fraction of cells where the Jeans length is unresolved (i. e. where $\lambda_J < 4\Delta x$) is reported in the top-right corner.

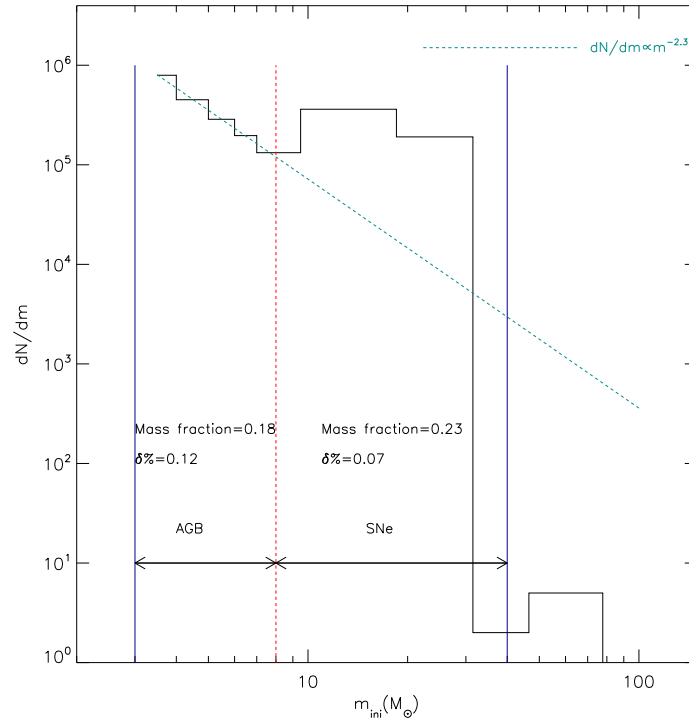


Figure C1. Initial mass function of individual stars obtained in our simulation (black histogram), compared with the one of [Kroupa \(2001\)](#) in the same mass range (dark-cyan dashed line). The range in which individual stars are created is between $3 M_{\odot}$ and $100 M_{\odot}$. The vertical red dashed line marks the separation mass between AGB and the progenitors of core-collapse SNe, i.e. the massive stars with initial mass $8 M_{\odot} < m_{\text{ini}} < 40 M_{\odot}$. The vertical solid blue lines enclose the AGB+SNe mass range. We report the total mass fractions of individual AGB and SNe, along with the deviation $\delta\%$ from the value obtained from the integral of the [Kroupa \(2001\)](#) in the corresponding mass range.