



HAL
open science

Multicriteria optimization of 3D printed wing using PLA reinforced with carbon fiber

David Hicham Bassir, Yue Hao, Khaoula Abouzaid, Patrice Salzenstein

► **To cite this version:**

David Hicham Bassir, Yue Hao, Khaoula Abouzaid, Patrice Salzenstein. Multicriteria optimization of 3D printed wing using PLA reinforced with carbon fiber. International Conference on Numerical Analysis and Applied Mathematics (ICNAAM) 2021, Sep 2021, Rhodes, Greece. hal-03814544

HAL Id: hal-03814544

<https://hal.science/hal-03814544v1>

Submitted on 14 Oct 2022

HAL is a multi-disciplinary open access archive for the deposit and dissemination of scientific research documents, whether they are published or not. The documents may come from teaching and research institutions in France or abroad, or from public or private research centers.

L'archive ouverte pluridisciplinaire **HAL**, est destinée au dépôt et à la diffusion de documents scientifiques de niveau recherche, publiés ou non, émanant des établissements d'enseignement et de recherche français ou étrangers, des laboratoires publics ou privés.

Multicriteria optimization of 3D printed wing using PLA reinforced with carbon fiber

David BASSIR^{1,2, a)} and Hao YUE^{3, b)}, Khaoula ABOUZAIID^{4, c)}, Patrice SALZENSTEIN^{5, d)}

Author Affiliations

¹UTBM, Université de Bourgogne Franche Comte, Rue de Leupe, 90400 Sevenans, France

²Centre Borelli, Université Paris Saclay, 4 Av. des Sciences, 91190 Gif-sur-Yvette, France

³Research Foundation for Development & Innovation in Science and Engineering (FRDISI), Casablanca, Morocco

⁴UMR-ICB, Sciences Mirande, 9 Avenue Alain Savary, 21078 Dijon Cedex, France

⁵CNRS, UBFC, FEMTO-ST institute, 15B avenue des Montboucons, F25030 Besançon Cedex, FRANCE

Author Emails

Corresponding author: a) david.bassir@utbm.fr

b) yuehao20160719@gmail.com , c) khaoula.abouzaid@ensem.ac.ma, d) patrice.salzenstein@femto-st.fr

Abstract. The purpose of this work is the optimal conception of a wing built using fused deposition modeling (FDM), which is one of the main additive manufacturing (AM) process. PLA reinforced with carbon fiber was selected for the filament as we have defined their mechanical properties in previous work. The optimization approach use hybrid strategy based on surface response method with kriging model and a heuristic method to avoid to be trapped in local minimization/maximization. The objective functions for this optimization are the weight, the drag (functions to minimize) and the lift (function to maximize) with respect to the failure criteria of the composite material used to build the fuselage. The challenge for this kind of optimization is the multilevel aspect, as it requires firstly to get the optimal parameters of the model before getting the optimal distribution of thicknesses.

WING STRUCTURE AND MATERIAL USED FOR FDM PROCESS

The wing structure used in this optimization process was inspired from one hybrid UAV project that we have already defined the external shape and the limitations (1,2). However, two additional parts were added to the previous work, one concerns the integration of 3D printed material (3,4) and the other one is related to the global optimization of composite material using kriging model and surface response (5–8). Figure 1 describes the wing structure with and without the central fan (used for the vertical and take-off landing VTOL-UAV) (1).

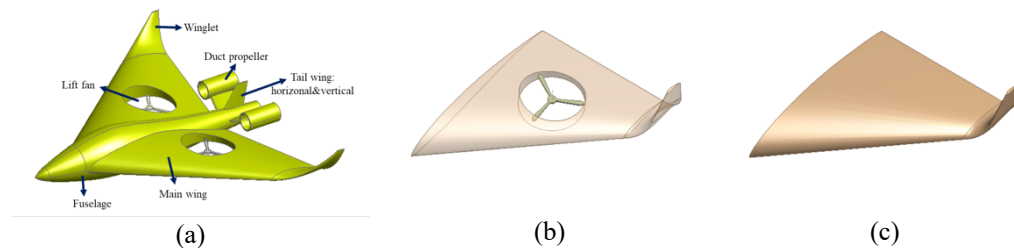


Figure 1. (a) Description of the UAV concept (b) Wing frame with the central fan (b) Wing frame without the central fan

Concerning the material filament used for the FDM process it consists of a PLA filament of 1.5mm (Fig.2.a) reinforced with 15% of carbon fibers as described in Fig.2.b.

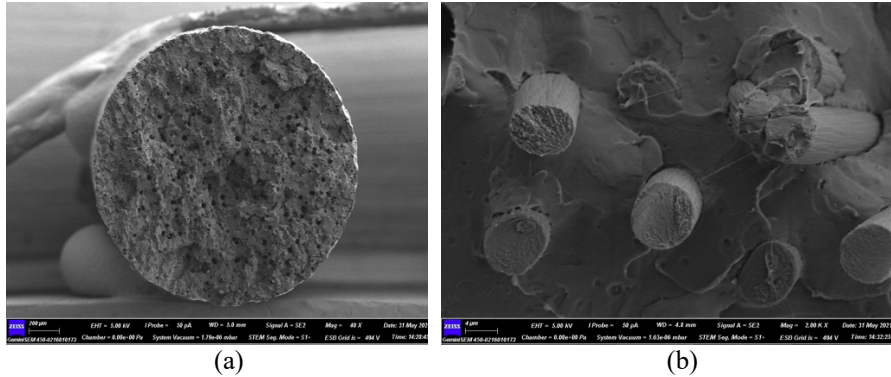


Figure 2. (a) View of the 3D printing filament (b) distribution of the carbon fiber inside the PLA

The wing was built using multilayers deposits with the following orientations +45 and -45 degrees. The orientation and the stacking can be seen in the Fig.3.a. The voids that appeared after the FDM deposit were studied and taken into account in previous work (10). Figure.3.b. shows one edge after traction test of one sample for the material characterisation.

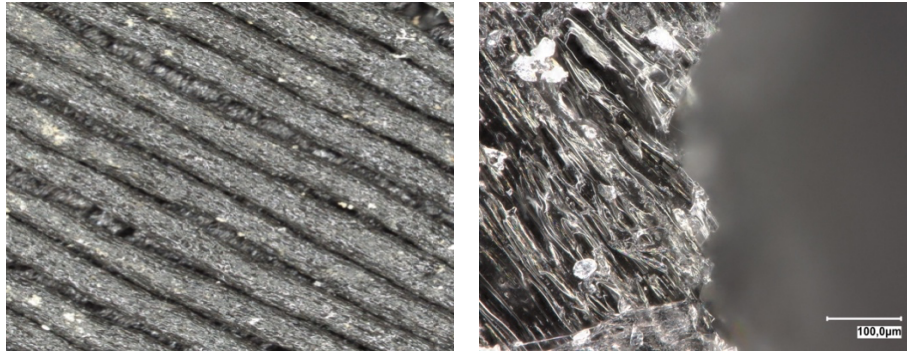


Figure 3. (a) View of the 3D printing fuselage of the wing where we can notice the layers (b) after traction test so that we can see the failure mode at micron-scale.

MULTICRITERIA OPTIMIZATION APPROCH

The main objective of this multicriteria optimization is to reduce both the total weight of the wing structure M_{wing} and its maximum deformation D_{max} . In addition to the design parameter, the optimal design is also subjected to other limitations in order to reduce the risk of the failure mode. The first limitation, concerns the safety factor SF that should be greater than 5 to granter structure security. The second limitation is related to the maximum deformation D_{max} that should be less than 2% of wing span. The mathematical formulation can be seen in equation 1.

The design parameters are the descriptions of the span and the chord parts of the wing (*incident angle, chord length, span of plain wing, span of winglet, ratio of plain wing tip, Ratio of winglet tip*) in addition to the thicknesses (Fig. 4). In this section, design of experiment method was used to create the pool of the initial solutions that are evaluated using CFD method (*using Fluent software*) to get more accurate points of the estimation. After this first loop, a surface response is then built to mimic the mechanical response of the wing under the external loading (1,11). It is very useful in such case to reduce the cost and the time consuming. Then, a heuristic approach based on genetic algorithm (8,12,13) was used for the multicriteria optimization to get the Pareto front. Final conception was then selected from this front line.

$$\begin{cases} \min \{M_{wing}\} \\ \min \{D_{max}\} \\ S.T. \begin{cases} D_{max} \leq 20mm \\ SF \geq 5 \end{cases} \end{cases} \quad (1)$$

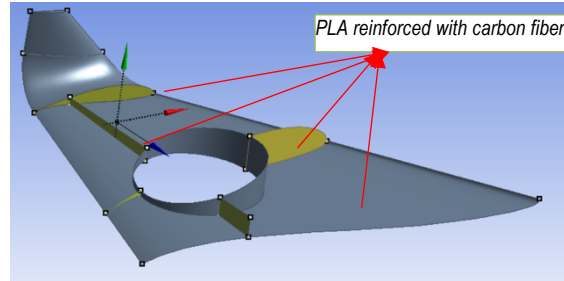


Figure 4. Design parameters and the different parts that were reinforced with composite material

NUMERICAL RESULTS

At the convergence of the optimization process described above, a Pareto front is obtained in Fig. 5. The relative errors between the surrogate approach and CFD prediction were less than 2%. The optimal objective functions obtained at the pareto front are: weight of the wing $M_{wing} = 3.36\text{kg}$, maximum deflection $D_{max} = 19.93\text{mm}$ and the safety factor $SF=7.52$. The distribution of the Von Mises stress with the optimal parameter is presented in Fig.6.

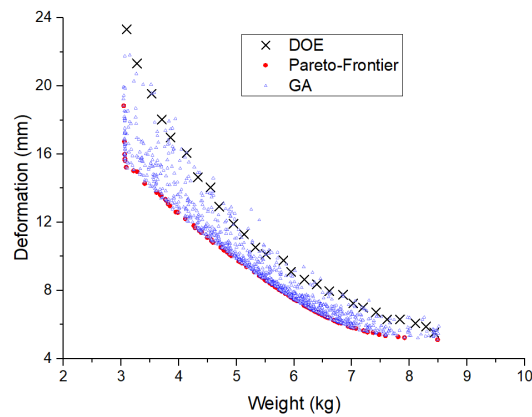


Figure 5. Pareto finale front obtained with the hybrid approach.

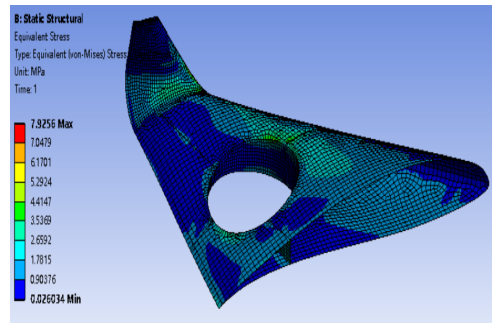


Figure 6. Von Mises stress distribution with the optimal parameter.

CONCLUSION

The hybrid optimization approach that we have presented allows us to design and to build efficiently a 3D composite structure of a wing used for our new concept of VTOL-UAV. Stress distribution and maximum deflection were within the defined limitations. Among the perspective to improve our design and the mechanical response is to study further the influence of the voids for the mentioned material. This may allow us to build more accurate FE prediction. This investigation will surely require advance Micro CT scan and high performance computing.

REFERENCES

1. Yue H, Bassir D, Medromi H, Ding H, Abouzaid K. Optimal design of Vertical-Taking-Off-and-Landing UAV wing using multilevel approach. *Int J Simul Multidiscip Des Optim* [Internet]. 2020 Dec 16;11:26. Available from: <https://www.ijsmdo.org/10.1051/smdo/2020020>
2. El Maani R, Elouardi S, Radi B, El Hami A. Multiobjective aerodynamic shape optimization of NACA0012 airfoil based mesh morphing. *Int J Simul Multidiscip Des Optim* [Internet]. 2020 Jul 24;11:11. Available from: <https://www.ijsmdo.org/10.1051/smdo/2020006>
3. Abouzaid K, Guessasma S, Belhabib S, Bassir D, Chouaf A. Thermal mechanical characterization of copolyester for additive manufacturing using FDM. *Int J Simul Multidiscip Des Optim*. 2019;10:A9.
4. Abouzaid K, Guessasma S, Belhabib S, Bassir D, Chouaf A. Printability of co-polyester using fused deposition modelling and related mechanical performance. *Eur Polym J*. 2018;108:262–73.
5. Bassir DH, Maire J-F, Irisarri FX. Optimal of fibres orientation and stacking order for composite laminate. In 2006.
6. Lelpe J, Majak J. Nonlinear constitutive behavior of orthotropic materials. *Mech Compos Mater*. 2000 Jul;36(4).
7. Guessasma S, Belhabib S, Bassir D, Nouri H, Gomes S. On the Mechanical Behaviour of Biosourced Cellular Polymer Manufactured Using Fused Deposition Modelling. *Polymers (Basel)* [Internet]. 2020 Nov 11 [cited 2021 Aug 31];12(11):2651. Available from: <https://www.mdpi.com/2073-4360/12/11/2651>
8. Bassir DH, Guessasma S, Boubakar L. Hybrid computational strategy based on ANN and GAPS: Application for identification of a non-linear model of composite material. *Compos Struct*. 2009;88(2).
9. Majak J, Pohlak M. Decomposition method for solving optimal material orientation problems. *Compos Struct*. 2010 Jul;92(8).
10. Guessasma S, Belhabib S, Bassir D, Nouri H, Gomes S. On the Mechanical Behaviour of Biosourced Cellular Polymer Manufactured Using Fused Deposition Modelling. *Polymers (Basel)*. 2020 Nov 11;12(11).
11. Guessasma S, Bassir D. Neural network computation for the evaluation of process rendering: Application to thermally sprayed coatings. *Int J Simul Multidiscip Des Optim*. 2017;
12. Guessasma S, Bassir HD. Comparing heuristic and deterministic approaches to optimise mechanical parameters of biopolymer composite materials. *Mech Adv Mater Struct*. 2009;16(4).
13. Tang X, Bassir DH, Zhang W. Shape, sizing optimization and material selection based on mixed variables and genetic algorithm. *Optim Eng*. 2011;12(1–2).