



X-ray Micro-Computed Tomography: A Powerful Device to Analyze the 3D Microstructure of Anode-Electrolyte in BaZr_{0.8}Y_{0.2}O₃ Protonic Ceramic Electrochemical Cells and the Reduction Behavior

Victoire Lescure, Morgane Gelin, Mélanie François, Mohammad Arab Pour Yazdi, Pascal Briois, Frédéric Demoisson, Lionel Combemale, Solène Valton, Gilles Caboche

► To cite this version:

Victoire Lescure, Morgane Gelin, Mélanie François, Mohammad Arab Pour Yazdi, Pascal Briois, et al.. X-ray Micro-Computed Tomography: A Powerful Device to Analyze the 3D Microstructure of Anode-Electrolyte in BaZr_{0.8}Y_{0.2}O₃ Protonic Ceramic Electrochemical Cells and the Reduction Behavior. Membranes, 2022, 12 (1), pp.68. 10.3390/membranes12010068 . hal-03812324

HAL Id: hal-03812324

<https://hal.science/hal-03812324>

Submitted on 8 Apr 2024

HAL is a multi-disciplinary open access archive for the deposit and dissemination of scientific research documents, whether they are published or not. The documents may come from teaching and research institutions in France or abroad, or from public or private research centers.

L'archive ouverte pluridisciplinaire **HAL**, est destinée au dépôt et à la diffusion de documents scientifiques de niveau recherche, publiés ou non, émanant des établissements d'enseignement et de recherche français ou étrangers, des laboratoires publics ou privés.



Article

X-ray Micro-Computed Tomography: A Powerful Device to Analyze the 3D Microstructure of Anode-Electrolyte in BaZr_{0.8}Y_{0.2}O₃ Protonic Ceramic Electrochemical Cells and the Reduction Behavior

Victoire Lescure ^{1,2} , Morgane Gelin ³, Mélanie François ¹ , Mohammad Arab Pour Yazdi ², Pascal Briois ² , Frédéric Demoisson ¹, Lionel Combemale ¹ , Solène Valton ³ and Gilles Caboche ^{1,*}

¹ Laboratoire Interdisciplinaire Carnot de Bourgogne, FCLAB, ICB-UMR6303, CNRS, Université de Bourgogne Franche-Comté, 9 Avenue Savary, BP47870, CEDEX, 21078 Dijon, France; victoire_lescore@etu.u-bourgogne.fr (V.L.); melanie.francois@u-bourgogne.fr (M.F.); frederic.demoisson@u-bourgogne.fr (F.D.); lionel.combemale@u-bourgogne.fr (L.C.)

² Institut FEMTO-ST, FCLAB, UMR 6174, CNRS, University Bourgogne Franche-Comté, 15B Avenue des Montboucons, 25030 Besançon, France; mohammad.arab-pour-yazdi@utbm.fr (M.A.P.Y.); pascal.briois@utbm.fr (P.B.)

³ RX Solutions SAS, 24 Bis Rue Uranus, ZAC Altaïs, 74650 Chavanod, France; morgane.gelin@rx-solutions.com (M.G.); solene.valton@rx-solutions.com (S.V.)

* Correspondence: gilles.caboche@u-bourgogne.fr



Citation: Lescure, V.; Gelin, M.; François, M.; Arab Pour Yazdi, M.; Briois, P.; Demoisson, F.; Combemale, L.; Valton, S.; Caboche, G. X-ray Micro-Computed Tomography: A Powerful Device to Analyze the 3D Microstructure of Anode-Electrolyte in BaZr_{0.8}Y_{0.2}O₃ Protonic Ceramic Electrochemical Cells and the Reduction Behavior. *Membranes* **2022**, *12*, 68.

<https://doi.org/10.3390/membranes12010068>

Academic Editors: Damien Guilbert and Georgios Papakonstantinou

Received: 3 December 2021

Accepted: 31 December 2021

Published: 4 January 2022

Publisher's Note: MDPI stays neutral with regard to jurisdictional claims in published maps and institutional affiliations.



Copyright: © 2022 by the authors. Licensee MDPI, Basel, Switzerland. This article is an open access article distributed under the terms and conditions of the Creative Commons Attribution (CC BY) license (<https://creativecommons.org/licenses/by/4.0/>).

Abstract: New advanced fuel cell technologies are moving towards high-temperature proton conductors (HTPCs) to meet environmental issues. Their elaboration remains a challenge and micro-computed tomography (μ CT) is an innovative way to control their quality. NiO-BZY anodic supports of a protonic ceramic electrochemical cell (PCEC), elaborated by co-tape casting and co-sintered at 1350 °C, were coated with a BZY20 electrolyte layer by DC magnetron sputtering. The μ CT allowed to observe defects inside the volume of these PCEC half-cells and to show their evolution after an annealing treatment at 1000 °C and reduction under hydrogen. This technique consists in obtaining a 3D reconstruction of all the cross-sectional images of the whole sample, slice by slice. This allows seeing inside the sample at any desired depth. The resolution of 0.35 μ m is perfectly adapted to this type of problem considering the thickness of the different layers of the sample and the size of the defects. Defects were detected, and their interpretation was possible thanks to the 3D view, such as the phenomenon of NiO grain enlargement explaining defects in the electrolyte, the effect of NiO reduction, and finally, some anomalies due to the shaping process. Ways to anticipate these defects were then proposed.

Keywords: protonic ceramic fuel cell; X-ray micro-computed tomography; BaZr_{0.8}Y_{0.2}O_{3- δ} ; reactive pulsed DC magnetron sputtering

1. Introduction

Protonic ceramic electrical cells (PCEC) have an increasing research activity and show greater abilities for high performances and reversibility [1–3]. The use of high-temperature proton conductors (HTPCs) in such a system decreases the operating temperature in the 400–600 °C range and promotes better durability of the cells [1,2,4].

Among the perovskite material HTPCs, Y-doped BaCeO₃ exhibits the highest total conductivity at 600 °C [5–7]. However, its poor stability against CO₂ and H₂O-containing atmosphere hinder its practical application [8–11]. In contrast, Y-doped BaZrO₃, also called BZY, shows high chemical stability and an acceptable total conductivity at 600 °C, typically 10^{−3} S·cm^{−1} [12–16]. For these reasons, BZY is widely considered a promising electrolyte candidate for PCEC [17–19]. Furthermore, high electrochemical performances are guaranteed as the electrolyte gets smaller and denser.

The major limitation of BZY is its grain boundary resistance that limits its total conductivity [20–22]. Moreover, the highly refractive nature of BZY requires high sintering temperatures (1600–1700 °C) and long annealing times (>24 h), to achieve dense membranes with large grains and, hence, increase its performances [23,24].

Recently, the elaboration of thin and highly textured BZY electrolyte by pulsed laser deposition or reactive DC sputtering has been developed in order to overcome the grain boundary resistance drawback [25–27]. However, both techniques are highly sensitive to the substrate surface quality (flatness, roughness and densification) [28,29]. To this extent, having more information on the quality of the microstructure of the substrate and the electrolyte and the morphology of the interface between the two layers is important.

In this work, we used micro X-ray tomography, a powerful characterization device allowing a tridimensional morphological analysis, to detect defects in PCEC half-cells that could lead to sample failure during operation. Other more classical characterization methods could be used, such as scanning electron microscopy (SEM) [30] or transmission electron microscopy (TEM) [31]. However, these methods only allow a single plan view at a time, whereas μ CT is a way to visualize every single plan view of the sample. The substrate consisting of a porous and thick anode, and a thinner and denser layer on top called anode functional layer (AFL), is elaborated by co-tape casting, both made by the widely used cermet Ni-BaZr_{0.8}Y_{0.2}O_{3- δ} (noted BZY20) [32,33]. The anode-AFL assembly is co-sintered at 1350 °C for 5 h in the air to ensure the required mechanical properties and smooth surface [34,35]. The BZY20 electrolyte is deposited by reactive pulsed DC magnetron sputtering on top of the AFL layer for a final thickness of 2.5 μ m.

The X-ray micro-computed tomography (μ CT) used in this study has a 0.35 μ m resolution allowing the detection of small defects inputted during the elaboration process, especially in the bulk of anode and AFL and the interface AFL–electrolyte. Secondly, tomography was carried out to study the reduction of the anode and AFL layers. Three types of samples are studied: the raw half-cell, right after the deposition of the electrolyte on the anode with no added treatment, the annealed at 1000 °C half-cell and the reduced half-cell.

2. Materials and Methods

2.1. Materials

The starting powders of the substrate were provided by fuel cell materials (FCM, Cincinnati, OH, USA) for NiO (Ref: NiO-P, Lot#R5739, Item#312010, surface area 3.4 m²·g^{−1}) and by Cerpotech (Cerpotech, Norway) for BZY20 (Lot#180120A, surface area 24 m²·g^{−1}). The anode-AFL assembly was prepared by co-tape casting as described elsewhere [36]. The NiO-SDC powder was replaced by NiO and BZY20 powders in a 60/40 weight ratio. The substrates are cut with a 28 mm in diameter punch prior to the co-sintering. The heating and cooling rate are set at 3 °C·min^{−1}, an isothermal plateau at 300 °C for 2 h is applied to eliminate the organics before the staying time of 5 h at 1350 °C. The final diameter of the substrates is 22 mm.

Then, the BZY electrolyte layer was deposited by co-sputtering of Ba (purity 99.9%, Ø 50 mm × 3 mm) and Zr_{0.8}Y_{0.2} (purity 99.9%, Ø 50 mm × 6 mm) targets. The reactor was a 90 L cylinder Alcatel 604 SCM (CIT Alcatel, Annecy, France) pumped down via a turbo molecular pump system that permitted a residual vacuum below 10^{−4} Pa. The chamber was equipped with circular planar and water-cooled magnetron sputtering sources and the rotating substrate holder was parallel to these sources at about 60 mm. The Ba and Zr_{0.8}Y_{0.2} targets were supplied with a pulsed DC (Direct Current) advanced energy dual generator authorizing the control of the discharge power.

Argon (50 mL·min^{−1}) and oxygen (5 mL·min^{−1}) flow rates were controlled with the Brooks flowmeters and the working pressure was kept at 1 Pa during deposition (working pressure measured using an MKS Baratron gauge). The anode-AFL substrates were placed on the rotating substrate holder at 40 mm from the substrate holder axis and were heated by radiative effect with a graphite electrical resistance heater placed behind the substrate-

holder at 400 °C during deposition. The parameters of each target are presented in Table 1. The time of deposition was set to 1 h to obtain a layer of 2.5 µm.

Table 1. Sputtering deposition parameters of Ba and Zr_{0.8}Y_{0.2} targets.

Target	Power (W)	Tension (V)	Intensity (A)	Time Off (µs)	Frequency (kHz)
Ba	85	161	0.56	2	150
Zr _{0.8} Y _{0.2}	80	2 [30]	0.33	4	50

Then, the half-cell undergoes an annealing treatment of 1000 °C for 2 h, with a heating rate of 3 °C·min^{−1} to ensure good densification. To study the effect of the reduction on the material, the sample is put under dry hydrogen gas with a flow of 66.7 mL·min^{−1}. The reduction was carried out at 550 °C for 2 h, with a heating rate of 5 °C·min^{−1}.

2.2. Characterization of the Samples

2.2.1. Microstructure and Composition

The thickness and microstructure of the coating were measured and observed on a brittle fracture cross-section and the top surface using a Hitachi SU8230 Scanning Electron Microscope (SEM). The chemical composition was verified by energy dispersive spectrometry (EDS) with a Thermo-Scientific Ultradry Detector.

2.2.2. X-ray Tomography Analysis

X-ray tomography allows having not just a cross-section but information about the whole volume of the sample. It allows the 3D reconstruction from cross-sectional images and therefore allows the possibility to analyze the whole volume of the sample and visualize the cross-section at any desired depth in any direction.

X-ray tomography first consists in acquiring a series of X-ray radiographs of a sample that rotates around an axis perpendicular to the incident beam. Each radiograph acquired during a scan is composed of pixels (here 1840 × 1456). Each pixel has a gray value which depends on the material density crossed at its position. The different gray values composing an image are then distributed in a histogram.

The spatial X-ray attenuation distribution is then reconstructed by using a filtered back-projection algorithm, represented as a 3D volume. Detailed analysis of the half-cell morphology before and after annealing in air and in the reductive atmosphere are performed using an Easytom XL Ultra tomograph from the company RX Solutions LTD. A very high resolution (compared to currently available cone-beam laboratory systems) is achieved by using a Hamamatsu X-ray source. It achieves a spot size of 0.80 µm when using a W filament and it can even be reduced to 0.35 µm with a LaB₆ cathode. The X-ray source was operated with a LaB₆ cathode at a voltage of 100 kV. The detector is a Varex Flat Panel with a pixel size of 127 µm. The samples are scanned at a voxel size of 0.35 µm. Each scan consisted of around 1440 projections with an exposure time of 1 s and an averaging of 20 radiographs for each.

The tomography is based on the Beer–Lambert law of attenuation (Equation (1)):

$$I = I_0 e^{-\mu s} \quad (1)$$

where I is the measured intensity of the X-ray, I_0 is the initial intensity of the X-ray, μ is the X-ray attenuation coefficient, and s is the length of sample crossed by the X-ray.

The attenuation coefficient of the Beer–Lambert law, which is used in X-ray radiography physics, is proportional to the fourth power of the atomic number (Z^4) and the density of the investigated material. The contrast observed in the X-ray radiograph is explained by this attenuation law.

2.3. Volume Reconstruction and Microstructure Characterization

The asset of X-ray µCT analysis is based on the information obtained: a 3D representation of the attenuation of the different elements composing the sample.

Three cross-section slices, composed of voxels of different gray levels, allow characterizing nondestructively the microstructure of the sample scanned. Figure 1 shows an example of the three cross-section slices in X (a), Y (b) and Z (c) directions.

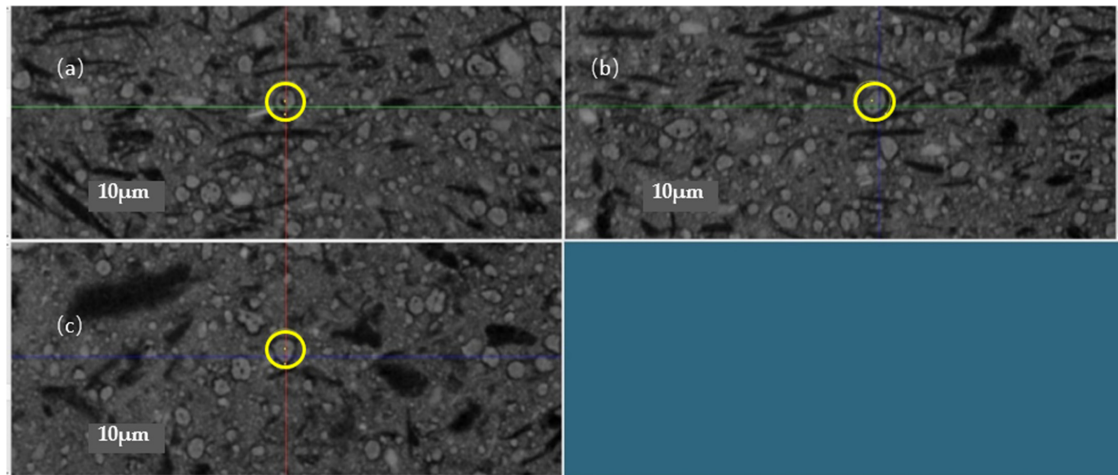


Figure 1. Grayscale representation of X-ray μ CT slices of a sample in three different orientations: X (a), Y (b), Z (c). Identification and localization of a Ni grain (yellow circles) in the reconstructed volume.

The different gray levels offer possibilities to segment elements of different densities and/or thicknesses, like inclusions, grains, pores, or even layers of different materials which can be randomly distributed in the sample. These elements can then be measured and/or localized in 3D.

Moreover, X-ray μ CT allows obtaining a 3D surface rendering of a specific gray level of the tomograph (Figure 2). A slice inside the volume with a specific orientation, X for example, can be chosen (Figure 2a), localized and presented in gray level (Figure 2c). Then, the surface corresponding to the selected gray level can be reconstructed in order to give a 3D surface rendering of the sample (Figure 3a).

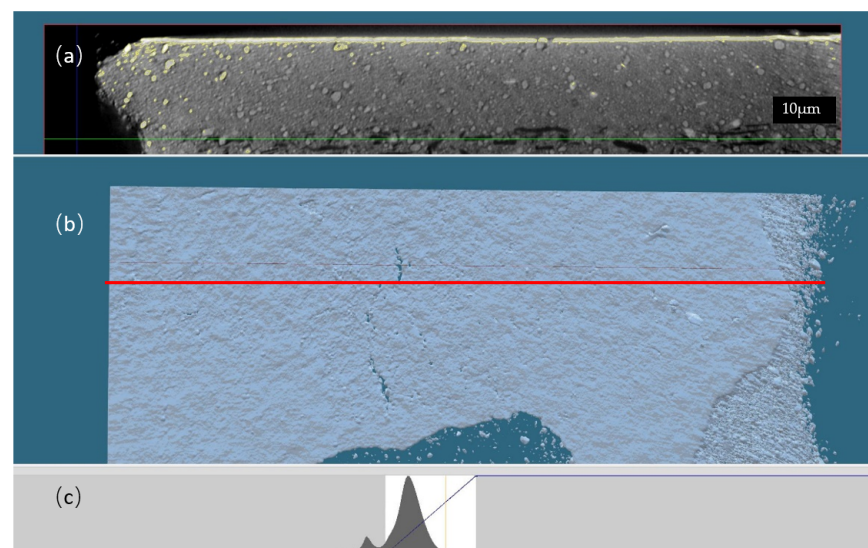


Figure 2. (a) Reconstructed slice localized inside the volume; its location is represented by the red line on figure (b). The 3D surface rendering (b) of a selected gray level, with the threshold represented by the yellow cursor on the figure (c). (c) Gray-level histogram of the tomograph.

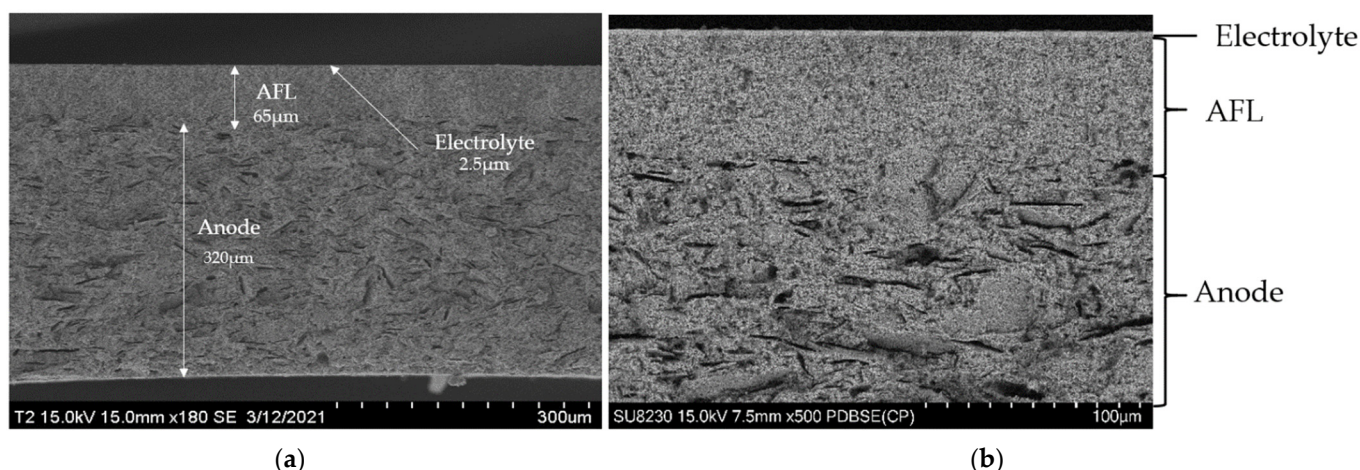


Figure 3. SEM micrographs of the cross-section of a sample with the three different layers. (a) general view in secondary electron mode, (b) detailed view in backscattering electron mode.

3. Results and Discussion

3.1. Scanning Electron Microscopy and Elemental Content Analysis

SEM micrographs of the cross-section of a sample are shown in Figure 3. The microstructure of a typical half-cell is visible on image a. Each layer, anode, AFL and electrolyte, presents a homogeneous thickness, is highly covering and perfectly adherent to each other. The anode is 320 μm thick with the presence of lamellar porosity caused by carbon graphite pore former included during the elaboration process. The 65 μm -thick AFL is a lot denser. The electrolyte is 2.5 μm thick.

The microstructure of the BZY20 layer as-deposited is shown in Figure 4a. The layer is dense, and no delamination was observed. Furthermore, grains are highly oriented, presenting the characteristic columnar shape of thin film deposited by physical vapor methods. This morphology is beneficial for the application as it eases the path of protons [27]. The columns are tilted due to the vapor flux angle [37,38]. Indeed, the Ba and $\text{Zr}_{0.8}\text{Y}_{0.2}$ targets were tilted by 15° to the normal to the surface of the support to ensure the best yield and homogeneity deposition and take into account the size of the targets.

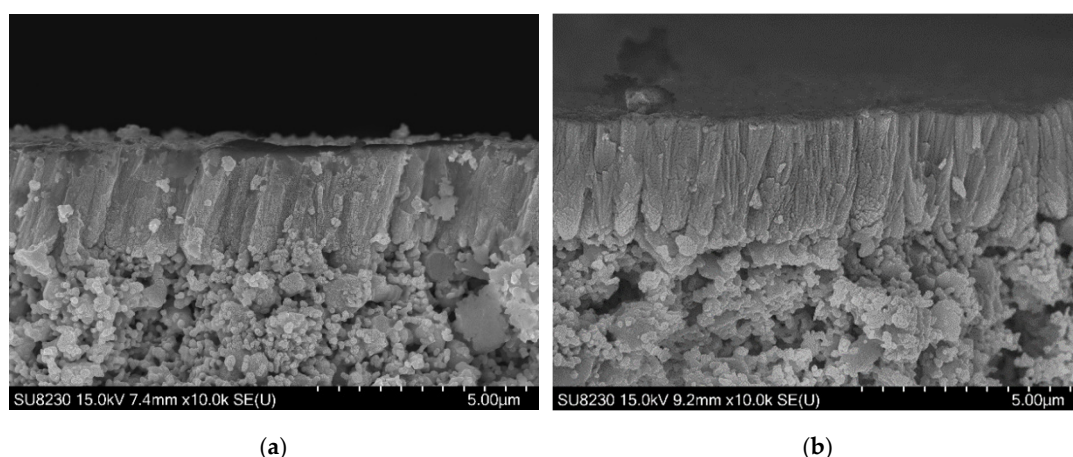


Figure 4. SEM micrographs of the electrolyte layer: (a) on the raw sample; (b) annealed sample at 1000 $^\circ\text{C}$ for 2 h.

The micrograph post-annealing is exposed in Figure 4b. The same dense columnar microstructure is observed, and the AFL–electrolyte interface is not altered by the thermal treatment. Furthermore, a straightening of the columns occurred. This reorientation could be attributed to stress relaxation [39,40].

The chemical composition was analyzed by Energy Dispersive Spectrometry (EDS) throughout the whole sample, meaning the three different layers, and the results are consistent with the expected $\text{BaZr}_{0.8}\text{Y}_{0.2}\text{O}_{3-\delta}$ composition.

3.2. X-ray Microtomography Characterization

The aim is to study and interpret the origin of the defect due to the elaboration process that could lead to a decrease in cell performances. To be studied, a small piece of $1 \times 1 \times 0.38 \text{ mm}^3$ was selected after breaking up for characterization by X-ray μCT . The prepared sample piece was successively analyzed first in the raw deposition state, then after annealing in air at 1000°C for 2 h and finally after reduction in H_2 at 550°C for 2 h to understand the impact of these different treatments. Figure 5 shows the schematic of the studied samples, the axes direction used in the following paragraphs are also represented.

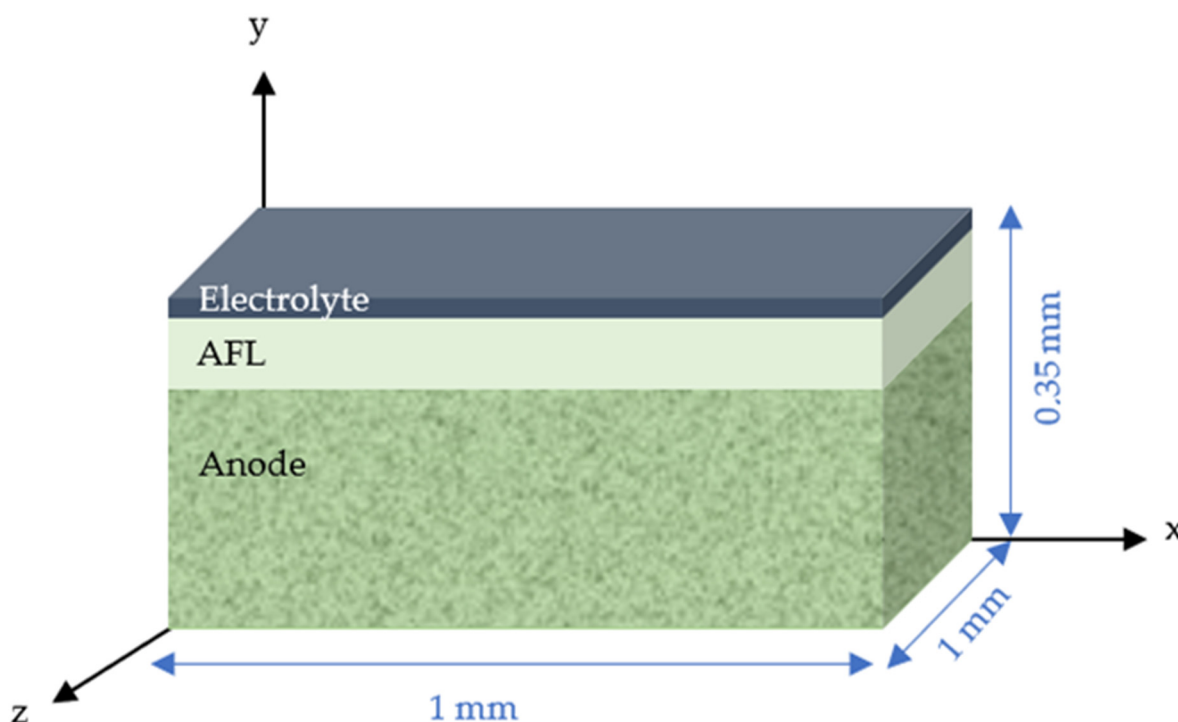


Figure 5. Schematic of the studied sample.

The first sample to be studied is the raw BZY20 half-cell. Figure 6 exhibits typical cross-sectional tomographs of the raw BZY20 half-cell along the X-axis (Figure 6a), along the Y-axis in the anode layer (Figure 6b), and along the Y-axis in the AFL (Figure 6c). Since not only the nature of the material but also its density affects the attenuation coefficient in the Beer–Lambert law, the tomography allows obtaining an image in contrast to density. Then, in the tomographs, the porosity is in dark gray. BZY appears in white and Ni in light gray. The median gray corresponds to a mix of BZY and NiO; these two phases are not properly separated because the resolution of the tomograph (350 nm) is lower than the mean grain size of BZY (173 nm, evaluation of 50 particles on SEM micrographs). In Figure 6a, where all three layers are displayed, the same microstructure as in SEM is highlighted, i.e., the anode is porous, the AFL is denser, and the electrolyte is dense. This microstructure is the same in any direction, as shown by the cross-section along the Y-axis.

Traveling through the sample along the Y-direction highlights an irregularity in the electrolyte layer present in the electrolyte (Figure 7a). Figure 7b,c show the same defect along the X- and Z-axis, respectively. A NiO grain bigger than usual highlighted in green on Figure 7 (10 μm compared to a mean size of 2–3 μm) is evidenced very close to the interface between the AFL and the electrolyte and is undoubtedly the cause of the crack of the electrolyte.

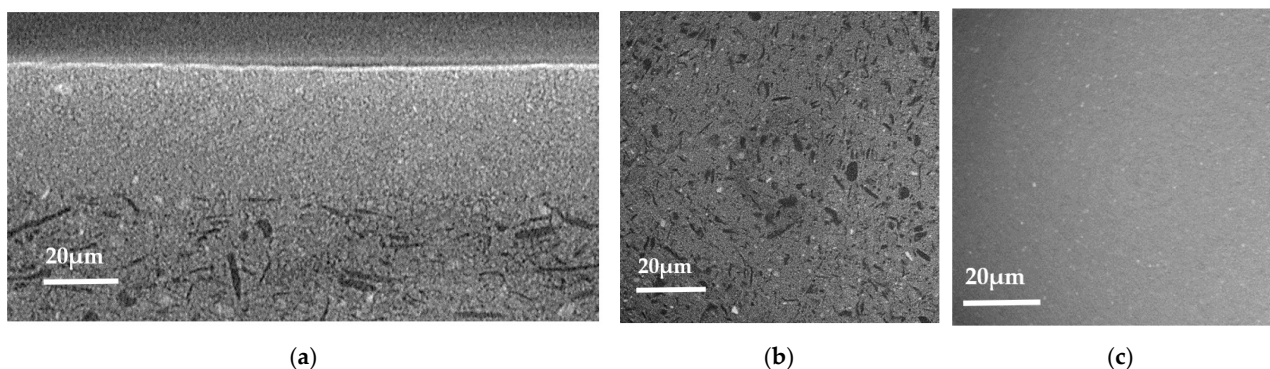


Figure 6. X-ray tomography images of the raw sample: (a) cross-section along the X-axis; (b) cross-section of the anode along the Y-axis; (c) cross-section of the AFL along the Y-axis.

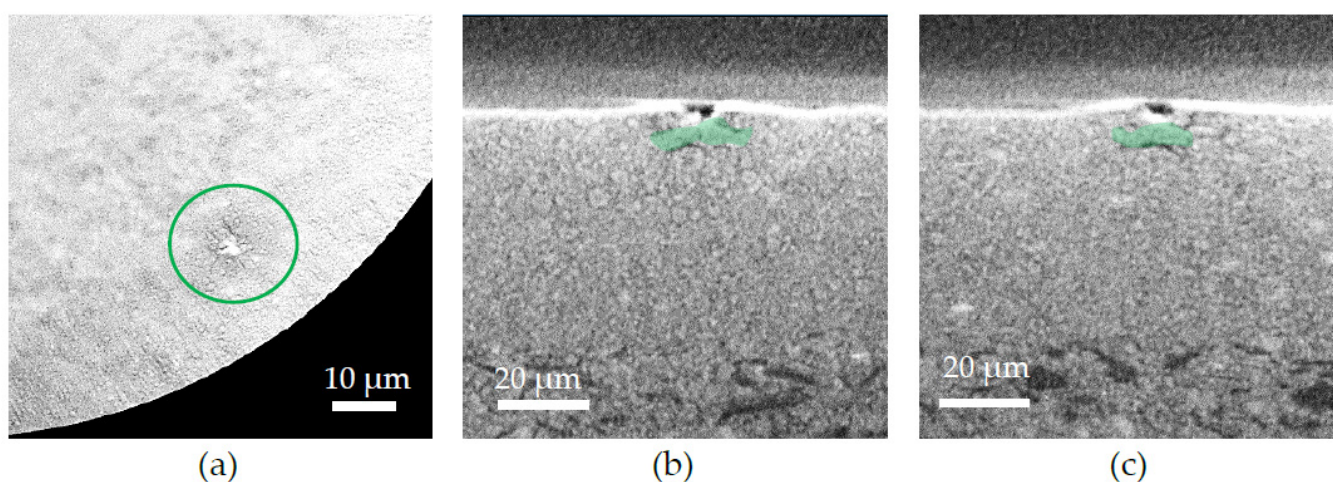


Figure 7. X-ray tomography images of a defect in the upper layers of the raw sample: (a) image from the top (Y-axis) of the defect in the electrolyte; (b) cross-section where the defect is along the X-axis with a NiO grain (in green) in the AFL; (c) cross-section where the defect is along the Z-axis with a NiO grain (in green) in the AFL.

According to the tomography analysis, the defect in the electrolyte layer is attributed to the dramatic grain growth of a NiO grain in the AFL layer near the AFL–electrolyte interface. It has been reported that NiO grain growth is significantly accelerated at 850 °C [41]. Thus, during the sintering stage at 1350 °C, a grain coarsening and agglomeration occurred, leading to unusually large NiO grains.

Since the AFL thickness is 65 μm and the coarse NiO grains are 10 μm, the probability of having a big NiO grain near the electrolyte interface is relatively high (about 16%). Other coarse NiO grains were found within the AFL layer; only the grains near the electrolyte interface are detrimental.

The TEC (Thermal Expansion Coefficient) is 40% to 50% higher for the oxide nickel than for the BZY ($12\text{--}14 \times 10^{-6} \cdot \text{K}^{-1}$ for NiO [42] and $8\text{--}10 \times 10^{-6} \cdot \text{K}^{-1}$ for BZY [43]).

Assuming the fact that, at this stage, there are unusually large NiO grains at the interface and that there is a differential expansion between the NiO grains and the BZY, the crack is formed during the cooling after the deposition at 450 °C. The heat during the deposition process caused the grain to expand more than the BZY matrix but also to shrink more afterward, dragging the electrolyte layer with it leading to a crack.

Furthermore, it has been reported that the NiO agglomeration is more susceptible to lead to a NiO grain growth [41], then increasing the grinding of the powder prior to

the slurry preparation could decrease the mean grain size and decrease the probability of having coarse grain near to the AFL–electrolyte interface.

The next sample to be studied is the annealed half-cell. Figure 8a is an X-ray tomograph along the X-axis showing the cross-section of the fired half-cell where all three layers, anode, AFL, and electrolyte, are visible. Figure 8b,c are X-ray tomography images along the Y-axis showing the anode (porous) and the AFL (dense). The microstructure of the three layers is very similar to the raw half-cell exhibited in Figure 6, attesting that the annealing treatment does not alter the microstructure.

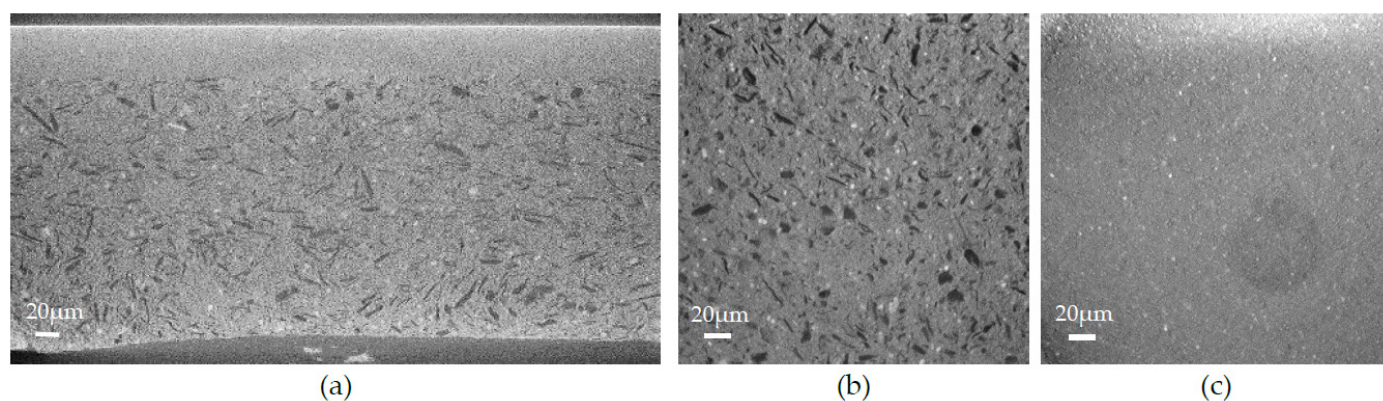


Figure 8. X-ray tomography images of the annealed sample: (a) cross-section along the X-axis; (b) cross-section of the anode along the Y-axis; (c) cross-section of the AFL along the Y-axis.

As previously, defects were highlighted thanks to the tomography analysis. Figure 9a shows the tomographs in the electrolyte layer along the Y-axis, Figure 9b,d are cross-section images along the X-axis and Figure 9c,e along the Z-axis. Two types of defects, denominated Defects 1 and 2, were evidenced; they are highlighted in blue in Figure 9. Defect 1 (Figure 9b,c) has a similar origin to the one seen on the raw sample (Figure 7), meaning that a crack was caused by a NiO grain present at the interface between the electrolyte and the AFL. Defect 2 on (Figure 9d,e) has a different origin; it corresponds to a lack of electrolyte matter leading to a hole of $\sim 6 \mu\text{m}$ in diameter. Nothing was found in the underlying layers that could explain the hole. Therefore, it is assumed that it comes from a growth anomaly produced during reactive magnetron sputtering. The defect arises as a result of the growth anomaly. This anomaly is removed during the annealing treatment leading to the formation of the hole.

Finally, a reduced cell was observed. Figure 10 represents X-ray tomography images of the reduced sample. The cross-section (Figure 10a) of the sample still exhibits three distinct layers. However, as seen in the images, the microstructure has changed. The anode is still porous, and the AFL remained dense, but the NiO grains were reduced in Ni, leading to the formation of a porous shell surrounding the particles. The Ni grains are more distinguishable on the images because they are now brighter and surrounded by a pore shell, as clearly exhibited by the circles surrounding the Ni grain in Figure 10. Their smaller size can be explained by material withdrawal due to the reduction.

A defect was also seen on the reduced sample, as seen in Figure 11. There is an important crack on the surface of the electrolyte. The two cross-section images show that there is nothing underneath the crack that could have caused it.

The matter withdrawal due to the reduction, combined with the TEC effect (Ni TEC being higher than NiO), leads to a strong localized reduction of the volume. This causes the collapse of the electrolyte layer in certain areas. The crack formation results from the good adhesion between the AFL and the electrolyte that remained strong during the reduction. The presence of coarse NiO grains enhanced the localized aspect of the volume reduction in some places, increasing the irregularities in the electrolyte.

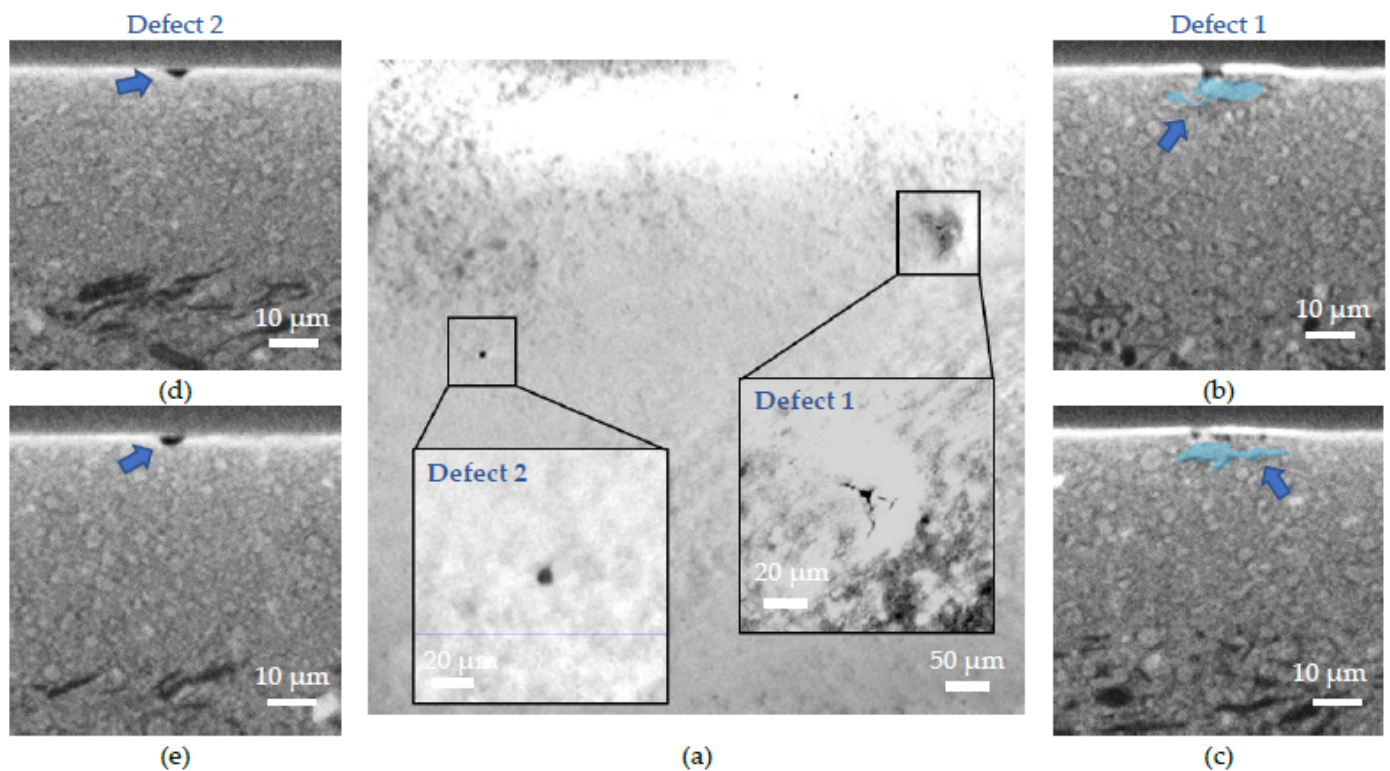


Figure 9. X-ray tomography images of defects in the annealed sample: (a) image along the Y-axis with focus on two defects, the inserts show higher magnification images of the defects; (b) cross-section of Defect 1 along the X-axis; (c) cross-section of Defect 1 along the Z-axis; (d) cross-section of Defect 2 along the X-axis; (e) cross-section of Defect 2 along Z-axis.

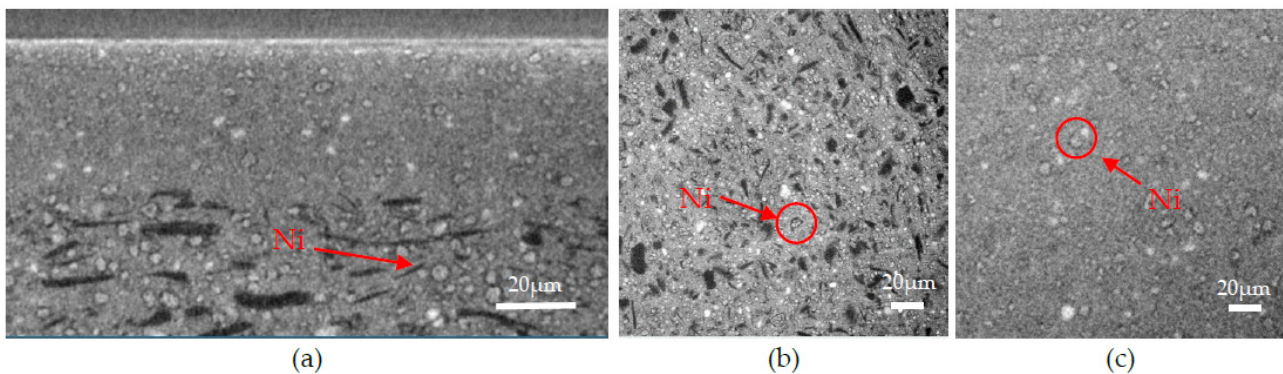


Figure 10. X-ray tomography images of the reduced sample: (a) cross-section along the X-axis; (b) cross-section of the anode along the Y-axis; (c) cross-section of the AFL along the Y-axis.

The crack is then due to the reduction of nickel oxide. The reduction leads to the contraction of the anode volume. To compensate for the compressive force exerted in the anode and the AFL, a tensile force results in the electrolyte layer leading to the electrolyte rupture. The reduction procedure has to be as smooth as possible in order to minimize the stress in the cell, but also the conclusion is the same as the raw and annealed sample, meaning that the powder has to be more homogenized during the shaping process by improving the grinding.

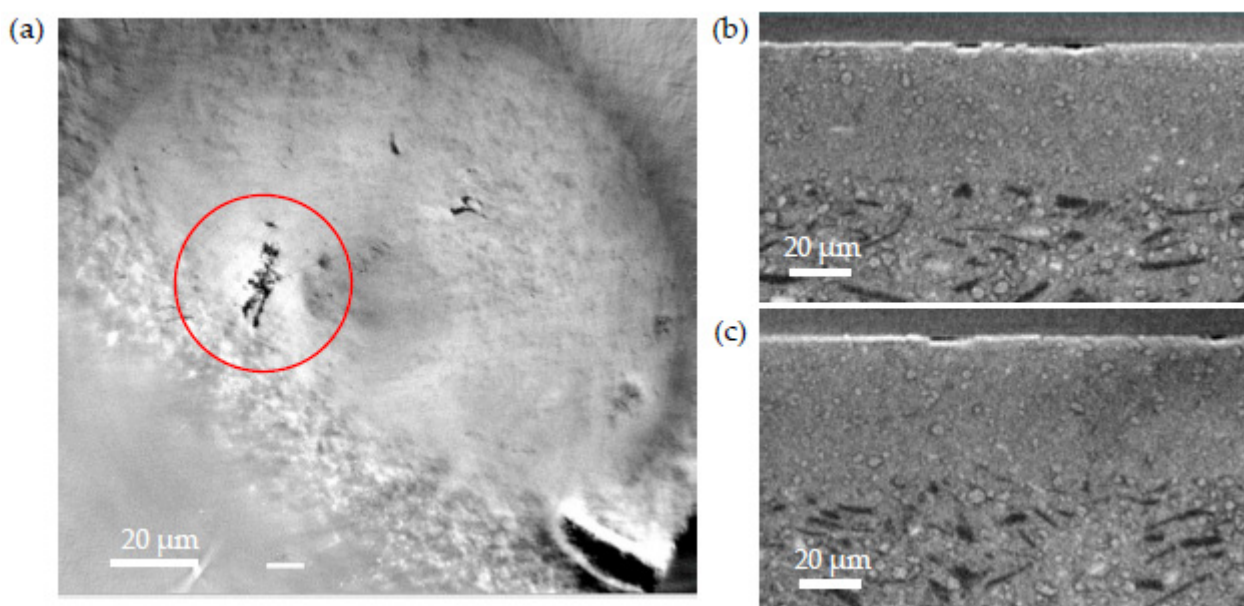


Figure 11. X-ray tomography images of a defect in the electrolyte of the reduced sample: (a) image from the top (Y-axis) of the defect in the electrolyte; (b) cross-section where the defect is along the X-axis; (c) cross-section where the defect is along the Z-axis.

4. Conclusions

In this paper, raw, annealed, and reduced NiO-BZY20 half-cells were successively studied by X-ray micro-computed tomography (μ CT).

These studies show:

- (i) The right microstructure of the three layers composing the half-cell: a dense electrolyte, a dense anode functional layer (AFL), and a porous anode.
- (ii) A defect similar to a lack of electrolyte matter with no underlying cause, meaning that it comes from the electrolyte deposition by DC magnetron sputtering. This defect, caused by a growth anomaly, is removed during the annealing treatment leading to the formation of a hole.
- (iii) The second type of defect is due to the presence of an unusually coarse NiO grain in the AFL. Because of the difference in thermal expansion coefficient (TEC) between NiO and BZY20, the stress caused during the expansion and shrinkage of the cell during the electrolyte deposition lead to crack formation in the electrolyte.
- (iv) Finally, the last type of defect is caused by the NiO reduction. The matter withdrawal, enhanced by the presence of unusually large Ni grains, leads to localized volume reduction, causing mechanical stress in the electrolyte.

Improving the homogeneity of the starting powders would be a solution. Though other characterization techniques are possible, μ CT has proved here the efficiency of tracking defects and analyzing degradation phenomena by being able to travel through the inside of the sample. Thus, the study of the origin of any defect is possible, which allows a better way to anticipate them.

Author Contributions: Conceptualization, V.L., M.G., M.F., P.B., L.C., S.V. and G.C.; methodology, V.L., M.F., P.B., S.V. and G.C.; software, M.G., M.F. and S.V.; validation, V.L., M.G., M.F., M.A.P.Y., P.B., F.D., L.C., S.V. and G.C.; formal analysis, V.L., M.G., M.F. and G.C.; investigation, V.L., M.G., M.F., M.A.P.Y., P.B., S.V. and G.C.; resources, V.L., M.F. and G.C.; data curation, V.L., M.G., M.F. and S.V.; writing—original draft preparation, V.L., M.G., M.F., S.V., M.A.P.Y. and G.C.; writing—review and editing, V.L., M.G., M.F., M.A.P.Y., S.V. and G.C.; visualization, V.L., M.G., M.F. and G.C.; supervision, P.B., F.D., L.C., S.V. and G.C.; project administration, P.B., F.D., L.C. and G.C.; funding acquisition, P.B., F.D., L.C. and G.C. All authors have read and agreed to the published version of the manuscript.

Funding: This research was funded in part by the Regional Council of Bourgogne Franche-Comté, by the FEDER (Fonds européen pour le développement régional), by the EIPHI Graduate School (Contract ANR-17-EURE-0002).

Institutional Review Board Statement: Not applicable.

Informed Consent Statement: Not applicable.

Data Availability Statement: Not applicable.

Acknowledgments: The authors thank the ARCEN-Carnot platform for the SEM experimentations.

Conflicts of Interest: The authors declare no conflict of interest.

References

- Meng, Y.; Gao, J.; Huang, H.; Zou, M.; Duffy, J.; Tong, J.; Brinkman, K.S. A high-performance reversible protonic ceramic electrochemical cell based on a novel Sm-doped BaCe_{0.7}Zr_{0.1}Y_{0.2}O_{3-δ} electrolyte. *J. Power Sources* **2019**, *439*, 227093. [\[CrossRef\]](#)
- Zhang, W.; Hu, Y.H. Progress in proton-conducting oxides as electrolytes for low-temperature solid oxide fuel cells: From materials to devices. *Energy Sci. Eng.* **2021**, *9*, 984–1011. [\[CrossRef\]](#)
- Dailly, J.; Taillades, G.; Ancelin, M.; Pers, P.; Marrony, M. High performing BaCe_{0.8}Zr_{0.1}Y_{0.1}O_{3-δ}–Sm_{0.5}Sr_{0.5}CoO_{3-δ} based protonic ceramic fuel cell. *J. Power Sources* **2017**, *361*, 221–226. [\[CrossRef\]](#)
- Hossain, S.; Abdalla, A.M.; Jamain, S.N.B.; Zaini, J.H.; Azad, A.K. A review on proton conducting electrolytes for clean energy and intermediate temperature-solid oxide fuel cells. *Renew. Sustain. Energy Rev.* **2017**, *79*, 750–764. [\[CrossRef\]](#)
- Kreuer, K.D. Proton-Conducting Oxides. *Annu. Rev. Mater. Res.* **2003**, *33*, 333–359. [\[CrossRef\]](#)
- Ryu, K.H.; Haile, S.M. Chemical stability and proton conductivity of doped BaCeO₃–BaZrO₃ solid solutions. *Solid State Ion.* **1999**, *125*, 355–367. [\[CrossRef\]](#)
- Wang, S.; Shen, J.; Zhu, Z.; Wang, Z.; Cao, Y.; Guan, X.; Wang, Y.; Wei, Z.; Chen, M. Further optimization of barium cerate properties via co-doping strategy for potential application as proton-conducting solid oxide fuel cell electrolyte. *J. Power Sources* **2018**, *387*, 24–32. [\[CrossRef\]](#)
- Matsumoto, H.; Kawasaki, Y.; Ito, N.; Enoki, M.; Ishihara, T. Relation Between Electrical Conductivity and Chemical Stability of BaCeO₃-Based Proton Conductors with Different Trivalent Dopants. *Electrochem. Solid State Lett.* **2007**, *10*, B77. [\[CrossRef\]](#)
- Münch, W. Proton diffusion in perovskites: Comparison between BaCeO₃, BaZrO₃, SrTiO₃, and CaTiO₃ using quantum molecular dynamics. *Solid State Ion.* **2000**, *136–137*, 183–189. [\[CrossRef\]](#)
- Wang, Y.; Wang, H.; Liu, T.; Chen, F.; Xia, C. Improving the chemical stability of BaCe_{0.8}Sm_{0.2}O_{3-δ} electrolyte by Cl doping for proton-conducting solid oxide fuel cell. *Electrochem. Commun.* **2013**, *28*, 87–90. [\[CrossRef\]](#)
- Lacz, A. Effect of microstructure on chemical stability and electrical properties of BaCe_{0.9}Y_{0.1}O_{3-δ}. *Ionics* **2016**, *22*, 1405–1414. [\[CrossRef\]](#)
- Tao, S.; Irvine, J.T.S. Conductivity studies of dense yttrium-doped BaZrO₃ sintered at 1325 °C. *J. Solid State Chem.* **2007**, *180*, 3493–3503. [\[CrossRef\]](#)
- Kim, J.-H.; Kang, Y.-M.; Byun, M.-S.; Hwang, K.-T. Study on the chemical stability of Y-doped BaCeO₃–δ and BaZrO₃–δ films deposited by aerosol deposition. *Thin Solid Films* **2011**, *520*, 1015–1021. [\[CrossRef\]](#)
- Sun, Z.; Fabbri, E.; Bi, L.; Traversa, E. Electrochemical Properties and Intermediate-Temperature Fuel Cell Performance of Dense Yttrium-Doped Barium Zirconate with Calcium Addition. *J. Am. Ceram. Soc.* **2012**, *95*, 627–635. [\[CrossRef\]](#)
- Dai, H.; Kou, H.; Wang, H.; Bi, L. Electrochemical performance of protonic ceramic fuel cells with stable BaZrO₃-based electrolyte: A mini-review. *Electrochem. Commun.* **2018**, *96*, 11–15. [\[CrossRef\]](#)
- Yun, D.; Kim, J.; Kim, S.-J.; Lee, J.-H.; Kim, J.-N.; Yoon, H.; Yu, J.; Kwak, M.; Yoon, H.; Cho, Y.; et al. Structural and Electrochemical Properties of Dense Yttria-Doped Barium Zirconate Prepared by Solid-State Reactive Sintering. *Energies* **2018**, *11*, 3083. [\[CrossRef\]](#)
- Fabbri, E.; Bi, L.; Pergolesi, D.; Traversa, E. Towards the Next Generation of Solid Oxide Fuel Cells Operating Below 600 °C with Chemically Stable Proton-Conducting Electrolytes. *Adv. Mater.* **2012**, *24*, 195–208. [\[CrossRef\]](#)
- Kim, D.; Lee, D.; Joo, J.H. Effect of Y-doping on the phase relation and electrical properties of Fe-doped BaZrO₃. *J. Eur. Ceram. Soc.* **2018**, *38*, 535–542. [\[CrossRef\]](#)
- Han, D.; Uda, T. The best composition of an Y-doped BaZrO₃ electrolyte: Selection criteria from transport properties, microstructure, and phase behavior. *J. Mater. Chem. A* **2018**, *6*, 18571–18582. [\[CrossRef\]](#)
- Yamazaki, Y.; Hernandez-Sanchez, R.; Haile, S.M. High Total Proton Conductivity in Large-Grained Yttrium-Doped Barium Zirconate. *Chem. Mater.* **2009**, *21*, 2755–2762. [\[CrossRef\]](#)
- Fabbri, E.; Pergolesi, D.; Traversa, E. Materials challenges toward proton-conducting oxide fuel cells: A critical review. *Chem. Soc. Rev.* **2010**, *39*, 4355. [\[CrossRef\]](#)
- Wang, S.; Liu, Y.; He, J.; Chen, F.; Brinkman, K.S. Spark-plasma-sintered barium zirconate based proton conductors for solid oxide fuel cell and hydrogen separation applications. *Int. J. Hydrog. Energy* **2015**, *40*, 5707–5714. [\[CrossRef\]](#)
- Bi, L.; Traversa, E. Synthesis strategies for improving the performance of doped-BaZrO₃ materials in solid oxide fuel cell applications. *J. Mater. Res.* **2014**, *29*, 1–15. [\[CrossRef\]](#)

24. Loureiro, F.J.A.; Nasani, N.; Reddy, G.S.; Munirathnam, N.R.; Fagg, D.P. A review on sintering technology of proton conducting BaCeO₃-BaZrO₃ perovskite oxide materials for Protonic Ceramic Fuel Cells. *J. Power Sources* **2019**, *438*, 226991. [[CrossRef](#)]
25. Bae, K.; Jang, D.Y.; Choi, H.J.; Kim, D.; Hong, J.; Kim, B.-K.; Lee, J.-H.; Son, J.-W.; Shim, J.H. Demonstrating the potential of yttrium-doped barium zirconate electrolyte for high-performance fuel cells. *Nat. Commun.* **2017**, *8*, 14553. [[CrossRef](#)] [[PubMed](#)]
26. Yazdi, M.A.P.; Briois, P.; Billard, A. Influence of the annealing conditions on the structure of BaCe_{1-x}Y_xO_{3-α} coatings elaborated by DC magnetron sputtering at room temperature. *Mater. Chem. Phys.* **2009**, *117*, 178–182. [[CrossRef](#)]
27. Pergolesi, D.; Fabbri, E.; D'Epifanio, A.; Di Bartolomeo, E.; Tebano, A.; Sanna, S.; Licoccia, S.; Balestrino, G.; Traversa, E. High proton conduction in grain-boundary-free yttrium-doped barium zirconate films grown by pulsed laser deposition. *Nat. Mater.* **2010**, *9*, 846–852. [[CrossRef](#)] [[PubMed](#)]
28. Lyu, Y.; Wang, F.; Wang, D.; Jin, Z. Alternative preparation methods of thin films for solid oxide fuel cells: Review. *Mater. Technol.* **2020**, *35*, 212–227. [[CrossRef](#)]
29. Zakaria, Z.; Awang Mat, Z.; Abu Hassan, S.H.; Boon Kar, Y. A review of solid oxide fuel cell component fabrication methods toward lowering temperature. *Int. J. Energy Res.* **2020**, *44*, 594–611. [[CrossRef](#)]
30. Faes, A.; Nakajo, A.; Hessler-Wyser, A.; Dubois, D.; Brisse, A.; Modena, S.; Van herle, J. RedOx study of anode-supported solid oxide fuel cell. *J. Power Sources* **2009**, *193*, 55–64. [[CrossRef](#)]
31. Liu, X.; Jin, F.; Sun, N.; Li, J.; Shen, Y.; Wang, F.; Li, J. Nd³⁺-deficiency double perovskite Nd₁-BaCo₂O₅₊ and performance optimization as cathode materials for intermediate-temperature solid oxide fuel cells. *Ceram. Int.* **2021**, *47*, 33886–33896. [[CrossRef](#)]
32. Liu, Y.; Shao, Z.; Mori, T.; Jiang, S.P. Development of nickel based cermet anode materials in solid oxide fuel cells—Now and future. *Mater. Rep. Energy* **2021**, *1*, 100003. [[CrossRef](#)]
33. Onishi, T.; Han, D.; Noda, Y.; Hatada, N.; Majima, M.; Uda, T. Evaluation of performance and durability of Ni-BZY cermet electrodes with BZY electrolyte. *Solid State Ion.* **2018**, *317*, 127–135. [[CrossRef](#)]
34. Geng, C.; Yu, X.; Wang, P.; Cheng, J.; Hong, T. The rapid one-step fabrication of bilayer anode for protonic ceramic fuel cells by phase inversion tape casting. *J. Eur. Ceram. Soc.* **2020**, *40*, 3104–3110. [[CrossRef](#)]
35. Sivasankaran, V.; Combemale, L.; Pera, M.C.; Caboche, G. Initial Preparation and Characterization of Single Step Fabricated Intermediate Temperature Solid Oxide Fuel Cells (IT-SOFC). *Fuel Cells* **2014**, *14*, 533–536. [[CrossRef](#)]
36. François, M.; Carpanese, M.P.; Heintz, O.; Lescure, V.; Clematis, D.; Combemale, L.; Demoisson, F.; Caboche, G. Chemical Degradation of the La_{0.6}Sr_{0.4}Co_{0.2}Fe_{0.8}O_{3-δ}/Ce_{0.8}Sm_{0.2}O_{2-δ} Interface during Sintering and Cell Operation. *Energies* **2021**, *14*, 3674. [[CrossRef](#)]
37. Siad, A.; Besnard, A.; Nouveau, C.; Jacquet, P. Critical angles in DC magnetron glaz thin films. *Vacuum* **2016**, *131*, 305–311. [[CrossRef](#)]
38. Tait, R.N.; Smy, T.; Brett, M.J. Modelling and characterization of columnar growth in evaporated films. *Thin Solid Films* **1993**, *226*, 196–201. [[CrossRef](#)]
39. Challali, F.; Mendil, D.; Touam, T.; Chauveau, T.; Bockelée, V.; Sanchez, A.G.; Chelouche, A.; Besland, M.-P. Effect of RF sputtering power and vacuum annealing on the properties of AZO thin films prepared from ceramic target in confocal configuration. *Mater. Sci. Semicond. Process.* **2020**, *118*, 105217. [[CrossRef](#)]
40. Zoppi, G.; Beattie, N.S.; Major, J.D.; Miles, R.W.; Forbes, I. Electrical, morphological and structural properties of RF magnetron sputtered Mo thin films for application in thin film photovoltaic solar cells. *J. Mater. Sci.* **2011**, *46*, 4913–4921. [[CrossRef](#)]
41. Ahn, S.; Koo, H.; Bae, S.-H.; Chang, I.; Cha, S.; Yoo, Y.-S.; Park, C. The Grain Growth Behavior of NiO in Thermally-Stable Mesoporous Gadolinium-Doped Ceria Network for Intermediate-Temperature Solid Oxide Fuel Cell Anode Materials. *J. Nanosci. Nanotechnol.* **2014**, *14*, 8117–8121. [[CrossRef](#)] [[PubMed](#)]
42. Wolfi, J.S.; Cavin, O.B. The Effective Thermal Expansion Of Nickel And Nickel Oxide During High-Temperature Oxidation. *Adv. X-ray Anal.* **1993**, *37*, 449–456. [[CrossRef](#)]
43. Løken, A.; Ricote, S.; Wachowski, S. Thermal and Chemical Expansion in Proton Ceramic Electrolytes and Compatible Electrodes. *Crystals* **2018**, *8*, 365. [[CrossRef](#)]