



HAL
open science

Design optimization of a parallel manipulator for otological surgery

Durgesh Salunkhe, Guillaume Michel, Elise Olivier, Shivesh Kumar, Marcello Sanguineti, Damien Chablat

► **To cite this version:**

Durgesh Salunkhe, Guillaume Michel, Elise Olivier, Shivesh Kumar, Marcello Sanguineti, et al.. Design optimization of a parallel manipulator for otological surgery. Congrès Français de Mécanique, Aug 2022, Nantes, France. hal-03811347v1

HAL Id: hal-03811347

<https://hal.science/hal-03811347v1>

Submitted on 11 Oct 2022 (v1), last revised 22 Dec 2023 (v2)

HAL is a multi-disciplinary open access archive for the deposit and dissemination of scientific research documents, whether they are published or not. The documents may come from teaching and research institutions in France or abroad, or from public or private research centers.

L'archive ouverte pluridisciplinaire **HAL**, est destinée au dépôt et à la diffusion de documents scientifiques de niveau recherche, publiés ou non, émanant des établissements d'enseignement et de recherche français ou étrangers, des laboratoires publics ou privés.

Design optimization of a parallel manipulator for otological surgery

A. Durgesh Haibhau Salunkhe^a, B. Guillaume Michel^b, C. Elise Olivier^b, D. Shivesh Kumar^c, E. Marcello Sanguineti^d, F. Damien Chablat^a

a. Laboratoire des Sciences du Numerique de Nantes, France + {durgesh.salunkhe, damien.chablat}@ls2n.fr

b. Centre Hospitalier Universitaire, Nantes, France + {guillaume.michel, elise.olivier}@chu-nantes.fr

c. Robotics Innovation Center, DFKI GmbH, Bremen, Germany + shivesh.kumar@dfki.de

d. University of Genoa, Italy + marcello.sanguineti@unige.it

Abstract :

The use of an endoscope in otological surgery as compared to using a microscope provides many benefits in terms of visibility and access to the operating region. The disadvantage of using an endoscope is that it has to be handled by the surgeon during the surgery. A novel parallel kinematic mechanism has been proposed recently for manipulating the endoscope during surgery. This paper details the design requirements considered for the optimization of the process, after consulting surgeons with various expertise. The paper further presents the different evaluation strategies that can be used to optimize the design parameters as per the needs of the application. The contribution of the presented work is the implementation of the surgeons' requirements into an objective function and the optimization of a proposed architecture of a parallel kinematic mechanism suitable for otological surgery.

Mots clefs : Parallel manipulators, optimization, otological surgery

1 Introduction

The use of an endoscope in otological surgery provides many benefits in terms of visibility and access to the operating region (refer to Fig. 1) but, it needs to be handled by the surgeon all the time as illustrated in Fig. 2. This makes the endoscopic surgeries cumbersome, as the surgeon has to switch between tools to operate and manage bleeding in the ear. The incapability of using both hands for the surgery leads to frustration and fatigue of the surgeon. The use of a robot arm to manipulate the endoscope as needed can improve the performance of otological surgeries remarkably. Using assistive systems can result in a drastic reduction in the operating time and positively affect both, the surgeon and the patient. The implementation of robots in inner ear surgery [1] and middle ear surgery [8, 3] were discussed in detail in [10]. Some of them provide a complete solution for robotic surgery, while some can be used as an assistant for the surgeon. The robots in surgery can be used to replace tasks of the surgeon that are mandatory but demand no human expertise. One of the applications in this area is the use of endoscopes in otological surgeries. Previously, robot mechanisms with a serial architecture were proposed as a solution for the endoscopic surgery [8] and the clinical report regarding the same has been

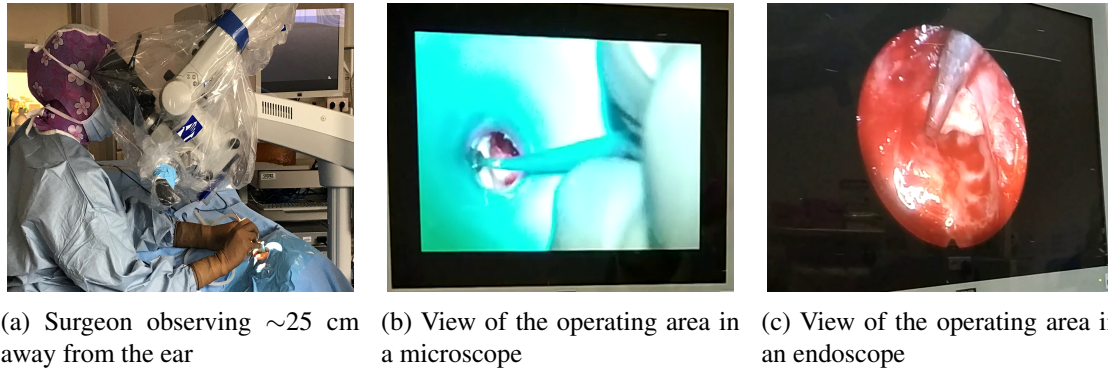


FIGURE 1 – The comparison of the view and proximity to operation while using an endoscope and a microscope.

published recently [11]. The serial manipulators have a larger workspace in contrast to their parallel counterparts and are relatively easier to design and analyze. That being said, parallel manipulators are generally known for their stiffer structure and are kinematically more robust (see [4] for a recent survey). This can be attributed to the reason that the error in joints is cumulative in serial mechanisms. It is easier to have a fixed in a parallel mechanism by the virtue of its architecture and the joint selection. These inherent advantages of parallel mechanisms give them a considerable edge in the application of endoscope manipulation.

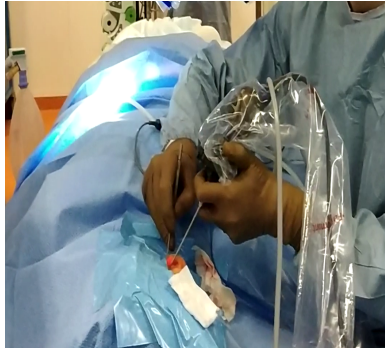
The study of the workspace for an otological surgery has been extensively done [6, 7] allowing a better understanding of the intricacies to be taken care of while proposing a mechanism. This paper explains the technical requirements, constraints, and optimization process for a proposed mechanism for otological surgery. In the presented work, we highlight the various design considerations and their priority elicited from the feedback collected from surgeons in multiple cities with varying experiences. We also present the methodology to include them as constraints in the optimization problem. A 2-dof orientation parallel mechanism with a remote center of motion, 2-UPS + 1U [5] is analyzed for manipulating the endoscope. The authors implement an optimization algorithm that combines a local search algorithm with global search methodologies for a faster and more efficient travel in the optimization space [9]. The effect of different rewarding strategies is presented, allowing one to choose the design parameters depending on the priorities of the surgeons. The possibility of reducing the parameter space in order to have a simpler optimization problem is briefly highlighted in the work. The final contribution is a set of proposed design parameters of the mechanism optimized for a given kinematic quality using different strategies that are suitable to implement in an otological surgery.

2 Design requirements and optimization

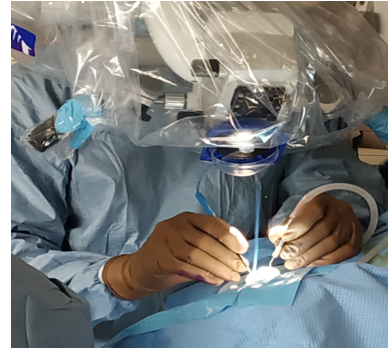
In this section, we discuss the design requirements compiled after taking feedback from surgeons, all over France across all expertise levels. This helps in getting the right parameters and weightages for the objective function to optimize. Later, the optimization strategies and their purpose are explained to motivate the possibility of different optimized designs for a surgery.

2.1 User centric choices

In this section, we discuss the different choices considered while proposing an optimum design. Taking into account the application in our case, it is of prime importance that the feedback from surgeons is



(a) The use of 1 hand to hold endoscope limits the number of instruments



(b) The surgeon can use 2 instruments while using a microscope

FIGURE 2 – The comparison of the number of instruments possible to use simultaneously while using an endoscope and a microscope.

	Expertise level		
	High	Medium	New
Priority 1	Easy to use	Easy to use	Compact size
Priority 2	Compact size	Compact size	Easy to use
Priority 3	Speed	Speed	Multipurpose
Priority 4	Multipurpose	Multipurpose	Speed

TABLE 1 – Priorities of surgeons of various expertise

analyzed in order to tweak the requirements and solutions related to them. We created a questionnaire in order to understand the requirements and expectations of the mechanism by the surgeons. The questionnaire was designed in two stages. In the first stage, a few preliminary questions were asked that could relate the answers to the desired speed of the actuator as well as their accuracy. A 3D CAD model was designed in order to compare the size of the mechanism with respect to the workspace of the ear as well as the sinus. To familiarize the surgeons with the speed of the mechanism, we prepared simulations of the movement and asked the surgeons to rate them as fast, slow or adequate. The questionnaire also presented an option to prioritize between four requirements; (i) speed of the mechanism, (ii) size of the mechanism, (iii) ease of operation, and (iv) multiple operation capacity. The results of the feedback are presented in Tab. 1. It was helpful to get a rough idea of what surgeons perceived when they were presented with the idea of robotic assistance. In the first phase, the participants were limited to one hospital only and no information regarding their level of expertise was taken into account.

To get better insights, we designed a questionnaire with an understanding of the surgeon's perspective. As we learned that the surgeons prioritized the ease of use over other parameters, we implemented the System Usability Scale (SUS), the most widely used standardized questionnaire for the assessment of perceived usability and learnability [2]. The information regarding the expertise and years of practice with and without endoscope was also collected. This was important as for a technology to be accepted in the environment, it is important to measure the comfort of adapting to such mechanisms. It also allowed us to have weighted feedback in order to design a mechanism for future operations. The complete environment was created on the CAD model for better perception of the size of the mechanism.

This questionnaire was also shared with a larger group of surgeons from various regions of France in order to get a conclusive idea of the speed, size, and accuracy required for proposing a solution. The

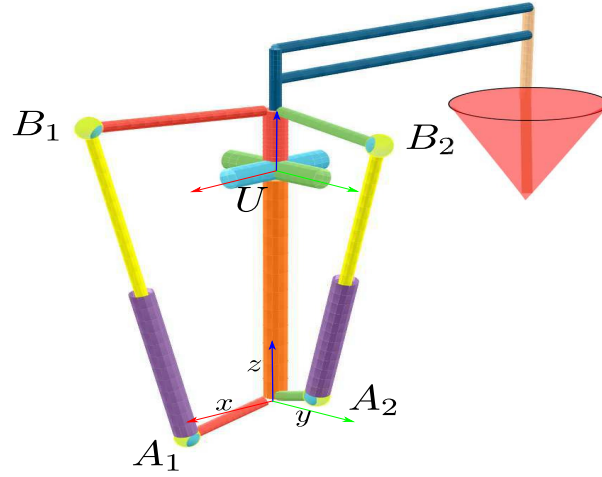


FIGURE 3 – The parameters to be optimized in 2UPS-1U

feedback from these questions provides a strong foundation for the optimization problem where the optimized solution completely depends on the constraints which are governed by the requirements of the surgeons.

2.2 Optimization strategies

The mechanism was optimized by implementing combined local and global search strategies using the Nelder-Mead methodology and a low discrepancy sequence. The complete algorithm is presented in [9]. The schematic of the mechanism is given in Fig. 3. The workspace of the mechanism is defined with parameters α and β such that the orientation of the endoscope is given by rotations about the axes of the universal joint by α and β respectively. The mechanism was optimized for a desired regular dextrous workspace (RDW_d) of a circle of radius 1 centered at $(0, 0)$ in the workspace. The first joints in leg 1 and leg 2 with respect to the base can be given as :

$$A_1 = \begin{bmatrix} a_1 \cos \phi_1 \\ a_1 \sin \phi_1 \\ h_1 \end{bmatrix}, A_2 = \begin{bmatrix} a_2 \cos \phi_2 \\ a_2 \sin \phi_2 \\ h_2 \end{bmatrix}$$

where, a_i is the distance of the first joint of i^{th} a leg from the origin of the base frame and ϕ_1 is the angle between the xy-projection of a vector from the origin of the base frame to the joint and the x-axis. Similarly, ϕ_2 is the angle between the xy-projection of a vector from the origin of the base frame to the joint and the y-axis. The joints of each leg are at height h_1 and, h_2 respectively. The universal joint (U) in the motion constraint generator leg is given as $[0, 0, t]^T$ with respect to the base frame. The spherical joints in each leg are represented with respect to a frame with U as its origin and are given as :

$$B_1 = \begin{bmatrix} b_1 \cos \psi_1 \\ b_1 \sin \psi_1 \\ h_3 + t \end{bmatrix}, B_2 = \begin{bmatrix} b_2 \cos \psi_2 \\ b_2 \sin \psi_2 \\ h_4 + t \end{bmatrix}$$

where, b_i and ψ_i are used to express the spherical joints in the legs and have a similar interpretation as that of a_i and ϕ_i . The joints of each leg are at height $h_3 + t$ and, $h_4 + t$ respectively. Thus, the mechanism can be parameterized by 13 parameters after assuming that the motion constraint generator lies on the z-

Parameters	Value	Parameters	Value
optimization dimension	13	Range of a_i	[0.25, 1.5]
Range of b_i	[0.25, 2]	Range of ϕ_i and ψ_i	[-1.745, 1.745]
Range of h_i	[-0.1, 0.1]	Range of t	[1, 4]
Number of starts	200	Number of iterations	10 and 20
Objective choice	GCI	reward strategy	binary, biased, minimum quality
Range of b_i	[0.25, 2]	Range of ϕ_i and ψ_i	[-1.745, 1.745]
Workspace (in roll and pitch)	circle of radius 1	stroke ratio	1.5
limits on spherical joints	$\pm\pi/6$ radians	Collision constraint	considered

TABLE 2 – Parameter ranges and other optimization variables

axis of the base. The 13 mechanism parameters to be optimized, as shown in figure 3 and detailed above, are : $[a_1, \phi_1, h_1, b_1, \psi_1, h_2, a_2, \phi_2, h_3, b_2, \psi_2, h_4, t]$. The optimal parameters and the constraints along with their range are shown in Table 2.

2.2.1 Rewarding strategies : Binary and center-biased reward

As we explore the possibility of having a large workspace with the proposed mechanism, it was decided to first see the results for maximizing the feasible workspace only. This is done by the binary reward strategy. Each configuration is awarded either 1 or 0 depending upon the point respecting the passive joint limits and the actuator limits only as shown in Fig. 4. The constraints for non-singular points and collision are treated more strictly. If any configuration in the RDW_d is singular or does not respect the collision constraint, then the evaluation is given a very large penalty. This makes sure that no matter how big the feasible workspace is, it is disqualified as a valid solution if it contains any singular curve or colliding configurations. As the endoscope mostly stays in the center of the RDW_d , a center-biased strategy can be implemented to have better kinematic performances in and around the center of the feasible workspace. One of such ideas is illustrated in Fig. 5. In this strategy, the area that respects all the constraints in the RDW_d is rewarded inversely proportionate to its proximity to the center of the workspace. It is expected to have designs that may have poor kinematic quality near the boundary of the workspace, but have excellent control in the area where the endoscope will be operational for most of the time.

Parameters	Binary reward	Center-biased reward	Minimum quality reward
Best point(ϕ and ψ in radians) $[a_1, \phi_1, h_1, b_1, \psi_1, h_2, a_2, \phi_2,$ $h_3, b_2, \psi_2, h_4, t]$ (refer figure 3)	[0.375, -1.75, 0.07, 1.23, 1.26,- 0.15, 0.75, -0.79, -0.06, 1.17, - 0.24, 0.19, 3.17]	[0.96, -1.38, 0.08, 1, -0.96, - 0.14, 0.82, 0.04, -0.05, 1, 0.6, 0, 2.97]	[0.9, -0.51, 0.01, 0.71, -0.55, 0.08, 1.07, -0.14, -0.02, 0.7, 0.98, 0.08, 3.26]
Best actuator range	[2.67, 4]	[2.41, 3.62]	[2.75, 4.1]
mean	0.76	0.76	0.78
standard deviation	0.18	0.20	0.17
maximum evaluation	1	1	1
configuration ($[\alpha, \beta]$) in radians	[0.15, -0.13]	[-0.32, -0.09]	[-0.34, 0.27]
minimum evaluation	0.402	0.16	0.404
configuration ($[\alpha, \beta]$) in radians	[-0.66, -0.75]	[0.94, 0.34]	[0.84, -0.54]

TABLE 3 – The results for the optimization of 2-dof RCM mechanism

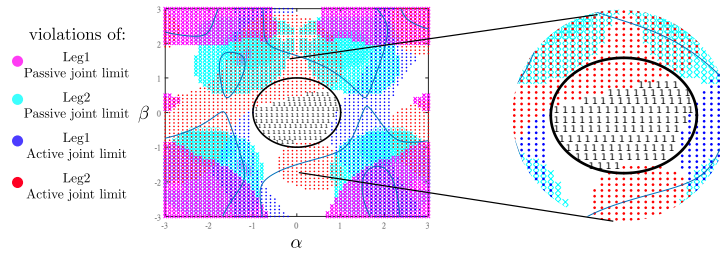


FIGURE 4 – Binary reward strategy

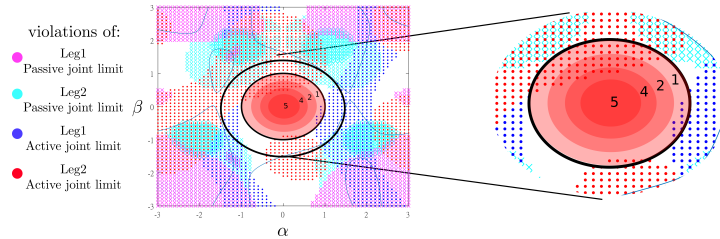


FIGURE 5 – Center biased reward strategy : the feasible points near the center of RDW_d are given higher weightage

2.2.2 Rewarding strategies : minimum quality

It is desirable to have a manipulator which has the capability to move in any direction with equal agility in any configuration of the feasible workspace. It was observed that the workspace is mainly bound by the singularity curves and as we go near singular configurations, the determinant of the Jacobian matrix drops drastically in value. As the global kinematic quality depends on the singular values of the Jacobian matrix, it becomes harder to have dextrous mobility near singular boundaries. So, a constraint is necessary to place a minimum value of the quality index in a particular workspace that will be used very often. This also allows us a buffer to controllably stop the manipulator if it shoots away from this prescribed working area. We bound the quality with acceptable ranges in the 64% of the RDW_d . So, the quality of the manipulator is treated as a constraint in this box and rewarded with either binary or biased rewards outside the inner box. The concept is graphically represented in Fig. 6.

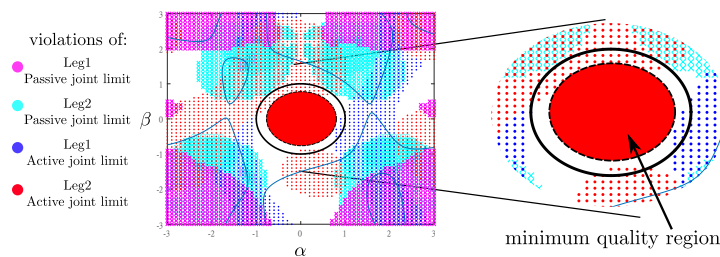


FIGURE 6 – The minimum quality rewarding strategy

3 Results

The results obtained following the application of each strategy proposed in the previous section are shown in 3. The binary rewarding strategy is a basic evaluation criterion, and it can be seen from Fig. 7 that the feasible workspace is indeed limited. In the center-biased strategy (refer to Fig. 8), the kinematic quality index is at the highest in the center but has poor quality around the boundary of the desired workspace. The most successful strategy that satisfies the requirements of the surgeons as well

as has good kinematic performance in the major area of the desired workspace is the minimum quality strategy as illustrated in Fig. 9.

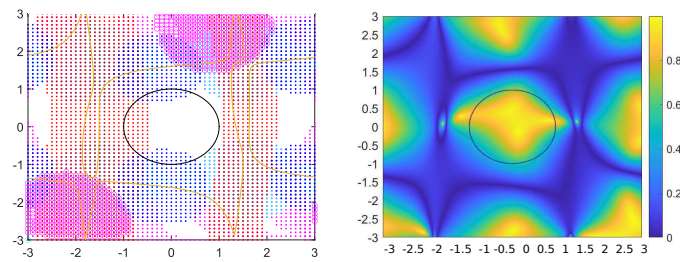


FIGURE 7 – Feasible workspace and heatmap for the quality index with binary rewarding strategy

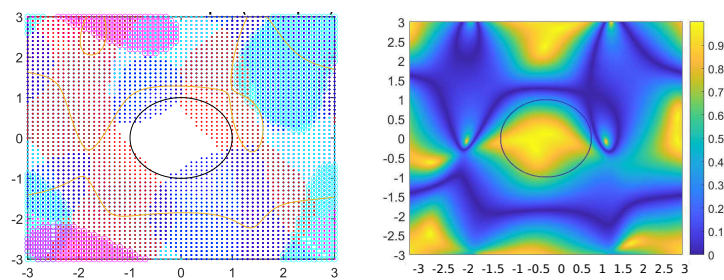


FIGURE 8 – Feasible workspace and heatmap for the quality index with center biased rewarding strategy

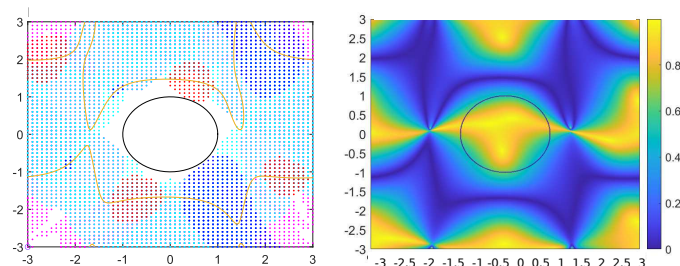


FIGURE 9 – Feasible workspace and the heatmap for the minimum quality threshold rewarding strategy

4 Conclusions

The presented work details the different priorities of surgeons to be considered while designing a mechanism for otological surgery. The work also details the optimization method as well as the different strategies implemented in order to have better kinematic properties in the feasible workspace of the manipulator. The contribution of the work is presented as a result of a set of design parameters for an optimized 2UPS + 1U mechanism using each presented reward strategy, allowing the designer to choose the dimensions as per the requirement. The future work is to analyze the impact of simplification of design parameters, to obtain easy to manufacture designs, on the optimization process.

Références

- [1] Brett Bell, Christof Stieger, Nicolas Gerber, Andreas Arnold, Claude Nauer, Volkmar Hamacher, Martin Kompis, Lutz Nolte, Marco Caversaccio, and Stefan Weber. A self-developed and constructed robot for minimally invasive cochlear implantation. *Acta Oto-Laryngologica*, 132(4) :355–360, 2012.

- [2] Julian Brooke. Sus - a quick and dirty usability scale. In *P.W.Jordan, B. Thomas, B.A. Weerdmeester, and I.L. McClelland (Eds.) Usability Evaluation in Industry*, London, 2006. Taylor and Francis.
- [3] Andrei Danilchenko, Ramya Balachandran, Jenna L. Toennies, Stephan Baron, Benjamin Munske, J. Michael Fitzpatrick, Thomas J. Withrow, Robert J. Webster, and Robert F. Labadie. Robotic mastoidectomy. *Otology & Neurotology*, 32(1) :11–16, January 2011.
- [4] Shivesh Kumar, Hendrik Wöhrle, José de Gea Fernández, Andreas Müller, and Frank Kirchner. A survey on modularity and distributivity in series-parallel hybrid robots. *Mechatronics*, 68 :102367, 2020.
- [5] Guillaume Michel, Durgesh Salunkhe, Damien Chablat, and Philippe Bordure. A new RCM mechanism for an ear and facial surgical application. In *Advances in Service and Industrial Robotics*, page 12, Poitiers, 2020. Springer International Publishing.
- [6] Guillaume Michel, Durgesh Haribhau Salunkhe, Philippe Bordure, and Damien Chablat. Geometric Atlas of the Middle Ear and Paranasal Sinuses for Robotic Applications. *Surgical Innovation*, October 2021.
- [7] Guillaume Michel, Durgesh Haribhau Salunkhe, Philippe Bordure, and Damien Chablat. Literature Review on Endoscopic Robotic Systems in Ear and Sinus Surgery. *Journal of Medical Devices*, September 2021.
- [8] Mathieu Miroir, Yann Nguyen, Jérôme Szewczyk, Stéphane Mazalaigue, Evelyne Ferrary, Olivier Sterkers, and Alexis Bozorg Grayeli. RobOtol : from design to evaluation of a robot for middle ear surgery. In *2010 IEEE/RSJ International Conference on Intelligent Robots and Systems*, pages 850–856, Taipei, October 2010. IEEE.
- [9] Durgesh Haribhau Salunkhe, Guillaume Michel, Shivesh Kumar, Marcello Sanguineti, and Damien Chablat. An efficient combined local and global search strategy for optimization of parallel kinematic mechanisms with joint limits and collision constraints. *Mechanism and Machine Theory*, 173 :104796, 2022.
- [10] V. Vitiello, Su-Lin Lee, T. P. Cundy, and Guang-Zhong Yang. Emerging robotic platforms for minimally invasive surgery. *IEEE Reviews in Biomedical Engineering*, 6 :111–126, 2013.
- [11] Sykopetrites Vittoria, Ghizlene Lahlou, Renato Torres, Hannah Daoudi, Isabelle Mosnier, Stéphane Mazalaigue, Evelyne Ferrary, Yann Nguyen, and Olivier Sterkers. Robot-based assistance in middle ear surgery and cochlear implantation : first clinical report. *European Archives of Oto-Rhino-Laryngology*, May 2020.