



**HAL**  
open science

## Toward a realistic model of speech processing in the brain with self-supervised learning

Juliette Millet, Charlotte Caucheteux, Pierre Orhan, Yves Boubenec, Alexandre Gramfort, Christophe C Pallier, Ewan Dunbar, Jean-Rémi King

### ► To cite this version:

Juliette Millet, Charlotte Caucheteux, Pierre Orhan, Yves Boubenec, Alexandre Gramfort, et al.. Toward a realistic model of speech processing in the brain with self-supervised learning. NeurIPS 2022 - 36th Conference on Neural Information Processing Systems, Nov 2022, New Orleans, United States. hal-03808200

**HAL Id: hal-03808200**

**<https://hal.science/hal-03808200>**

Submitted on 10 Oct 2022

**HAL** is a multi-disciplinary open access archive for the deposit and dissemination of scientific research documents, whether they are published or not. The documents may come from teaching and research institutions in France or abroad, or from public or private research centers.

L'archive ouverte pluridisciplinaire **HAL**, est destinée au dépôt et à la diffusion de documents scientifiques de niveau recherche, publiés ou non, émanant des établissements d'enseignement et de recherche français ou étrangers, des laboratoires publics ou privés.



Distributed under a Creative Commons Attribution 4.0 International License

---

# Toward a realistic model of speech processing in the brain with self-supervised learning

---

Juliette Millet\*<sup>1,2,3</sup> Charlotte Caucheteux\*<sup>1,4</sup> Pierre Orhan<sup>2</sup> Yves Boubenec<sup>2</sup>  
Alexandre Gramfort<sup>4</sup> Ewan Dunbar<sup>2,5</sup> Christophe Pallier<sup>6</sup> Jean-Rémi King<sup>1,2</sup>

\*These authors contributed equally

<sup>1</sup>Meta AI, Paris, France <sup>2</sup>Ecole Normale Supérieure, PSL University, Paris, France

<sup>3</sup>LPI, Université de Paris cité, Paris, France

<sup>4</sup>Université Paris-Saclay, Inria, CEA, Palaiseau, France

<sup>5</sup>University of Toronto, Toronto, Canada

<sup>6</sup>Cognitive Neuroimaging Unit, INSERM, Gif-sur-Yvette, France

{jumi,ccaucheteux,jeanremi}@meta.com

## Abstract

Several deep neural networks have recently been shown to generate activations similar to those of the brain in response to the same input. These algorithms, however, remain largely implausible: they require (1) extraordinarily large amounts of data, (2) unobtainable supervised labels, (3) textual rather than raw sensory input, and / or (4) implausibly large memory (e.g. thousands of contextual words). These elements highlight the need to identify algorithms that, under these limitations, would suffice to account for both behavioral and brain responses. Focusing on speech processing, we here hypothesize that self-supervised algorithms trained on the raw waveform constitute a promising candidate. Specifically, we compare a recent self-supervised model, wav2vec 2.0, to the brain activity of 412 English, French, and Mandarin individuals recorded with functional Magnetic Resonance Imaging (fMRI), while they listened to approximately one hour of audio books. First, we show that this algorithm learns brain-like representations with as little as 600 hours of unlabelled speech – a quantity comparable to what infants can be exposed to during language acquisition. Second, its functional hierarchy aligns with the cortical hierarchy of speech processing. Third, different training regimes reveal a functional specialization akin to the cortex: wav2vec 2.0 learns sound-generic, speech-specific and language-specific representations similar to those of the prefrontal and temporal cortices. Fourth, we confirm the similarity of this specialization with the behavior of 386 additional participants. These elements, resulting from the largest neuroimaging benchmark to date, show how self-supervised learning can account for a rich organization of speech processing in the brain, and thus delineate a path to identify the laws of language acquisition which shape the human brain.

## 1 Introduction

The performance of deep neural networks has taken off over the past decade. Algorithms trained on object classification, text translation, and speech recognition are starting to reach human-level performance [Xu et al., 2020]. Furthermore, the *representations* generated by these algorithms have repeatedly been shown to correlate with those of the brain [Kriegeskorte, 2015, Yamins and DiCarlo, 2016, Kietzmann et al., 2018, Kell and McDermott, 2019, Cichy and Kaiser, 2019, Toneva and

Wehbe, 2019, Millet and King, 2021, Caucheteux and King, 2022], suggesting that these algorithms converge to brain-like computations.

Such convergence, however, should not obscure the major differences that remain between these deep learning models and the brain. In particular, the above comparisons derive from models trained with (1) extraordinarily large amounts of data (40GB for GPT-2 [Radford et al., 2019], the equivalent of multiple lifetimes of reading), (2) supervised labels, which is rarely the case for humans (e.g. [Yamins and DiCarlo, 2016]), (3) data in a textual rather than a raw sensory format, and/or (4) considerable memory (e.g., language models typically have parallel access to thousands of context words to process text). These differences highlight the pressing necessity to identify architectures and learning objectives which, subject to these four constraints, would be sufficient to account for both behavior and brain responses.

Here, we hypothesize that the latest self-supervised architectures trained on raw sensory data constitute promising candidates [Borgholt et al., 2022, Bardes et al., 2021, Baevski et al., 2020]. We focus on wav2vec 2.0 [Baevski et al., 2020], an architecture that stacks convolutional and transformer layers to predict a quantization of the latent representations of speech waveforms. We train wav2vec 2.0 on 600 h of effective speech – a quantity roughly comparable to what infants are exposed to during early language acquisition (speech only makes up a small fraction of infants’ daily experience) [Dupoux, 2018, Hart and Risley, 1992, Gilkerson et al., 2017].

We use standard encoding analyses [Naselaris et al., 2011, Huth et al., 2016, Yamins and DiCarlo, 2016, Kell et al., 2018] (see Figure 1) to compare this model to the brains of 412 healthy volunteers (351 English speakers, 28 French speakers, and 33 Mandarin speakers) recorded with functional magnetic resonance imaging (fMRI) while they passively listened to approximately one hour of audio books in their native language [Nastase et al., 2020, Li et al., 2021] (8.5 hours of distinct audio materials in total).

To better understand the similarities between wav2vec 2.0 and the brain, we compare brain activity to each layer of this model, as well as to several variants, namely (1) a random (untrained) wav2vec 2.0 model, (2) a model trained on 600 h of non-speech sounds, (3) a model trained on 600 h of non-native speech (for example, a model trained on English speech and mapped onto the brain responses to French-speaking participants), (4) a model trained on 600 h of native speech (for example, a model trained on English speech and mapped onto the brain responses to English participants), and (5) a model trained directly on speech-to-text (i.e., a supervised learning scheme) on the native language of the participants.

Our results provide four main contributions. First, self-supervised learning leads wav2vec 2.0 to learn latent representations of the speech waveform similar to those of the human brain. Second, the functional hierarchy of its transformer layers aligns with the cortical hierarchy of speech in the brain, and reveals the whole-brain organisation of speech processing with an unprecedented clarity. Third, the auditory-, speech-, and language-specific representations learned by the model converge to those of the human brain. Fourth, behavioral comparisons to 386 supplementary participants’ results on a speech sound discrimination task confirm this common language specialization.

## 2 Methods

### 2.1 Models

We train several variants of wav2vec 2.0 [Baevski et al., 2020] from scratch on different speech datasets using two different learning objectives (a self-supervised and a supervised objective).

#### 2.1.1 Architecture

Wav2vec 2.0 consists of three main modules. First, a feature encoder composed of seven blocks of temporal convolutions (output dimension 512) transforms the speech input  $S$  (raw mono waveform at 16 kHz) into a latent representation  $z$  (output dimension of 512, frequency 49 Hz, stride of 20 ms between each frame, receptive field of 25 ms). Second, a quantization module discretizes  $z$  into  $q$ , a dictionary of discrete and latent representations of sounds. Third,  $z$  is input to a “context network” consisting of 12 transformer blocks (model dimension 768, inner dimension 3072, and 8 attention heads), which together yield a contextualized embedding  $c$ , of the same dimensionality of  $q$ .

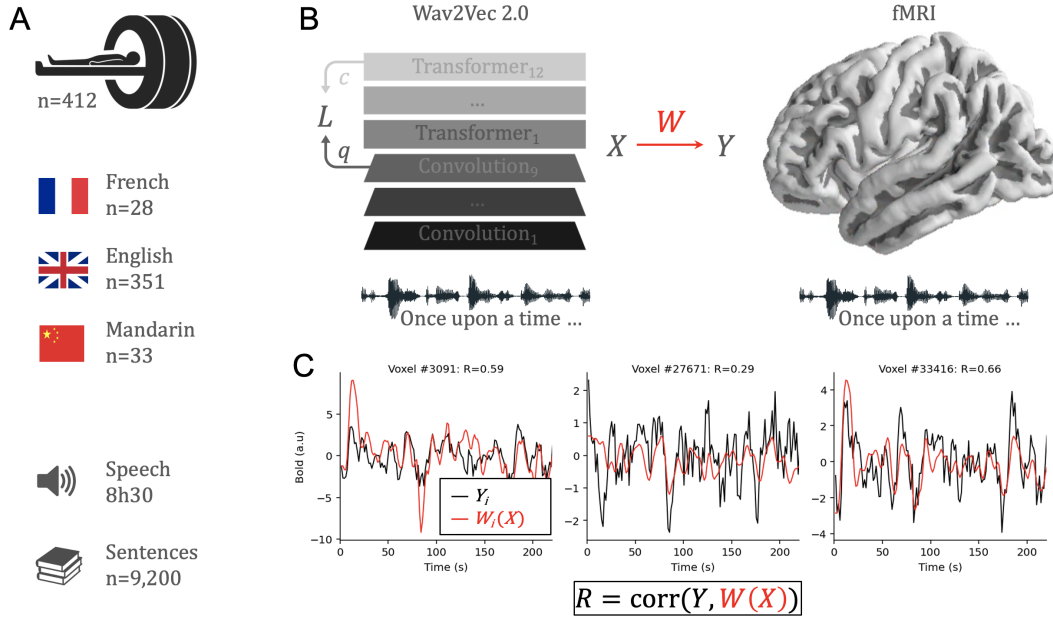


Figure 1: **Comparing speech representations in brains and deep neural networks.** **A.** We analyze the brain activity of 412 participants recorded with functional Magnetic Resonance Imaging (fMRI) while they passively listened to audio books in their native language (French, English or Mandarin). **B.** After training wav2vec 2.0 [Baevski et al., 2020] with self-supervised learning ( $L$ ) over 600 h of unlabelled, effective speech, we extract its activations in response to the audio books that were presented to the participants. We assess the similarity between the activations of the model  $X$  and brain activity  $Y$  with a standard encoding model  $W$  [Nastase et al., 2020] evaluated with a cross-validated Pearson correlation  $R$ . **C.** Examples of the true BOLD response (black) and the predicted BOLD response (red) estimated from a linear projection of the model’s activations in three voxels randomly selected from the 10<sup>th</sup> percentile of best voxels identified by the noise ceiling analysis for the first 200 s of a representative story in the test set.

### 2.1.2 Learning objective

**Self-supervised learning.** In this training paradigm, the model optimizes two losses. The first loss is contrastive and requires the model to predict the quantized representation  $q$  of some masked input using  $c$ , from a finite set of quantized representations drawn from the input sample. The second loss ensures that the quantized representations are diverse. See A.2 and [Baevski et al., 2020] for details.

**Supervised learning.** In this training paradigm, the quantization module is discarded and a linear layer mapping  $c$  to phonemes is added at the end of the pipeline. The model is randomly initialized and all layers (including the feature encoder) are trained using a Connectionist Temporal Classification (CTC) [Graves, 2012] loss to perform phone recognition. For both training paradigms, we extract the activations of each layer from both the feature encoder (outputting  $z$ ) and the context network (outputting  $c$ ). We extract the representations of the convolutional and transformer blocks using an input window of 10 s of raw waveform (stride = 5 s).

### 2.1.3 Training

**Datasets.** We successively train different wav2vec 2.0 models using each of four datasets: (i) the French and (ii) English CommonVoice corpora [Ardila et al., 2020], (iii) the MAGICDATA Mandarin Chinese Read Speech Corpus [Co., 2019], and (iv) a non-speech subset of the Audioset dataset [Gemmeke et al., 2017], which contains recordings of various acoustic scenes.

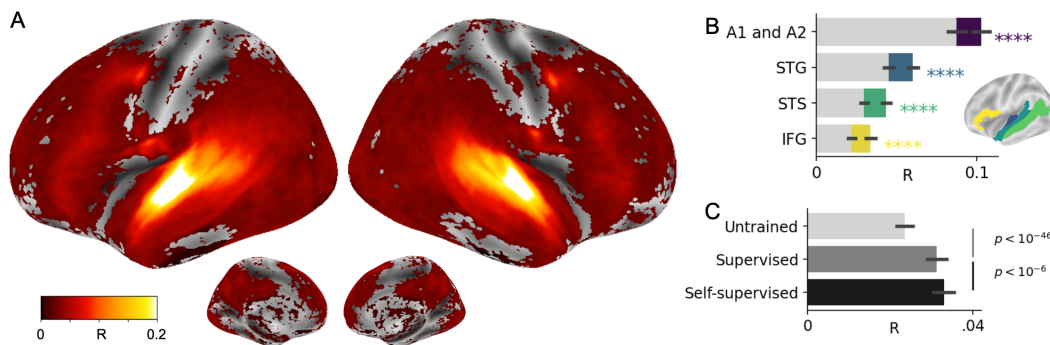


Figure 2: **Self-supervised learning suffices for wav2vec 2.0 to generate brain-like representations of speech.** **A.** Brain score ( $R$ ) assessed for each subject and voxel independently, and here averaged across subjects for clarity. Only scores significantly above chance level, as assessed using a two-sided Wilcoxon test across subjects after correction for multiple comparison are color-coded ( $p < 10^{-10}$ ). **B.**  $R$  scores for the same wav2vec2 model, averaged across subjects and voxels in four brain areas typically involved during speech processing (the primary and secondary auditory cortices, the superior temporal gyrus, the superior temporal sulcus, and the infero-frontal gyrus). In grey, the brain score obtained with a randomly initialized wav2vec 2.0 architecture. Error bars are the standard errors of the mean (SEM) across subjects. The stars indicate a significant difference between the random and trained model (all  $p < 10^{-4}$ ). **C.**  $R$  scores of wav2vec 2.0 without training (top), trained with a supervised (middle) and self-supervised learning rule (bottom), on the same 600 hours of effective speech. Scores are averaged across subjects and voxels and error bars are SEM across subjects.

**Preprocessing.** All the audio datasets were randomly subsampled to have an approximate size of 600 hours, downsampled to 16 kHz and converted to mono with the Sox software<sup>1</sup>. We randomly split the datasets into a training (80%), a validation (10%) and a test set (10%). The audio recordings we use from the Audioset dataset are filtered so that they do not contain speech or any sounds produced by humans, such as laughter or singing. For the speech datasets, we also use their corresponding annotations (in the supervised settings). We phonemize these annotations using eSpeakNG<sup>2</sup>. The number of different phoneme symbols in these annotations is similar for French (32), English (39), and Mandarin Chinese (33).

**Implementation.** We train all of our models using the fairseq implementation of wav2vec 2.0<sup>3</sup> using default hyperparameters. We also analyze a model whose parameters were randomly initialised (“untrained” model).

We use self-supervised learning to train four models: three on the speech datasets (French, English, and Mandarin) and one on the acoustic scenes dataset. In each case, the training was performed using the same configuration file (namely, the base configuration provided in the fairseq repository for pretraining wav2vec 2.0 on LibriSpeech [Panayotov et al., 2015]). We train the models for 400k updates and select the ones with the best validation loss.

We also use the supervised training paradigm to train three models, on the French, English, and Mandarin datasets, respectively. Each training was performed using the same configuration file, which was identical to the configuration provided in the fairseq repository for fine-tuning wav2vec 2.0 on the 960 hour Voxpopuli corpus [Wang et al., 2021], except that parameters were not frozen (`freeze_finetune_updates= 0`) and learning was performed on all parameters of the models using the CTC loss (`feature_grad_mult= 0.1`). We train the models for 400k updates and we use the ones with the best word error rate (WER) on the validation set. The French model obtains 13.9 WER, the English model 28.6 WER, and the Mandarin model 4.6 WER, on their respective test sets.

<sup>1</sup><http://sox.sourceforge.net/>

<sup>2</sup><https://github.com/espeak-ng/espeak-ng>

<sup>3</sup><https://github.com/pytorch/fairseq/tree/main/examples/wav2vec>

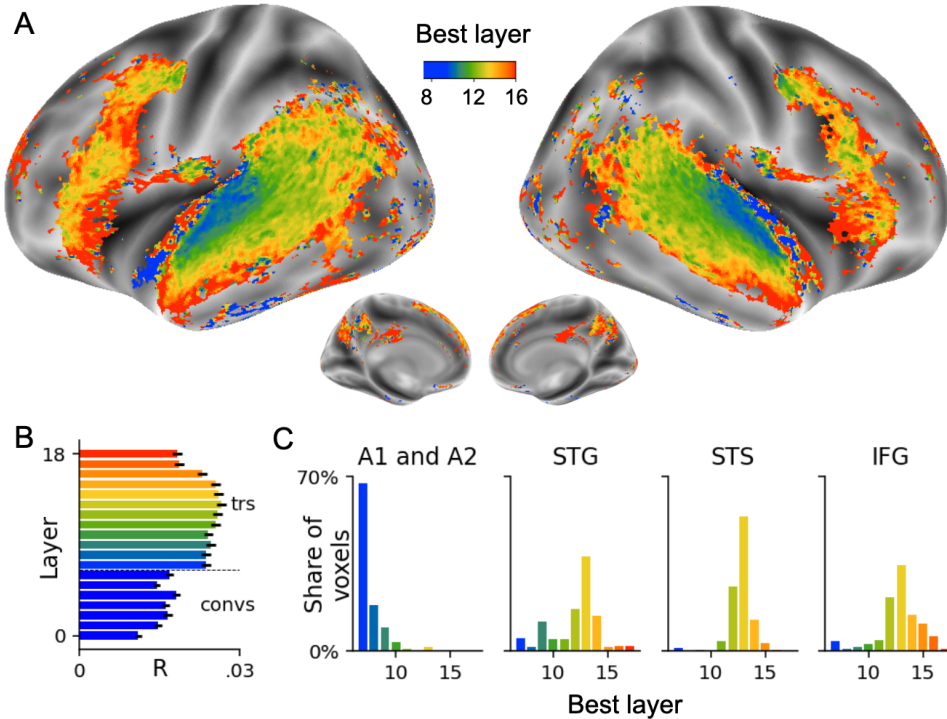


Figure 3: **The functional hierarchy of wav2vec 2.0 maps onto the speech hierarchy in the brain.** **A.** We compute the  $R$  score for each layer of wav2vec 2.0 separately and estimate, for each voxel, the layer with highest brain score on average across subjects. Only the voxels with significant brain scores are displayed ( $p < 10^{-18}$ ). While the first transformer layers (blue) map onto the low-level auditory cortices (A1 and A2), the deeper layers (orange and red) map onto brain regions associated with higher-level processes (e.g. STS and IFG). **B.** Layer-wise  $R$  scores averaged across all voxels. Error bars are SEM across subjects. **C.** Proportion of voxels with most predictive layer (x-axis) in four regions typically involved in speech processing. While most voxels in the primary cortex are best predicted by the first layers of the transformer, higher-level brain areas are best predicted by deeper layers.

## 2.2 Functional MRI

We analyse a composite set of fMRI recordings aggregated from the *Little Prince* [Li et al., 2021] and the *Narratives* public datasets [Nastase et al., 2020].

**Narratives.** This dataset<sup>4</sup> contains the fMRI recordings of 345 native English-speaking participants listening to English narratives (4.6 hours of unique audio in total). The participants listened to different stories varying from 7 to 98 min (mean = 26 min). Following [Nastase et al., 2020], we (1) focus on fifteen representative stories and ignore the narratives that have been modified by scrambling and (2) exclude eight participants because of noisy recordings. Overall, this selection results in a curated dataset of 303 participants listening to fifteen stories ranging from 3 min to 56 min, for a total of 4 hours of unique audio (36,018 words from a vocabulary of 4,004 unique words).

**The Little Prince.** This dataset<sup>5</sup> contains fMRI recordings of 48 English native speakers, 33 Mandarin native speakers, and 28 French native speakers listening to *The Little Prince* in their respective native language. The experiment itself was divided into nine runs of approximately 10 min of passive listening. For each language condition, the story was read by a single native speaker. The English, Mandarin, and French audiobooks last 94, 90 and 97 minutes respectively.

<sup>4</sup><https://openneuro.org/datasets/ds002345>

<sup>5</sup><https://openneuro.org/datasets/ds003643/versions/1.0.4>

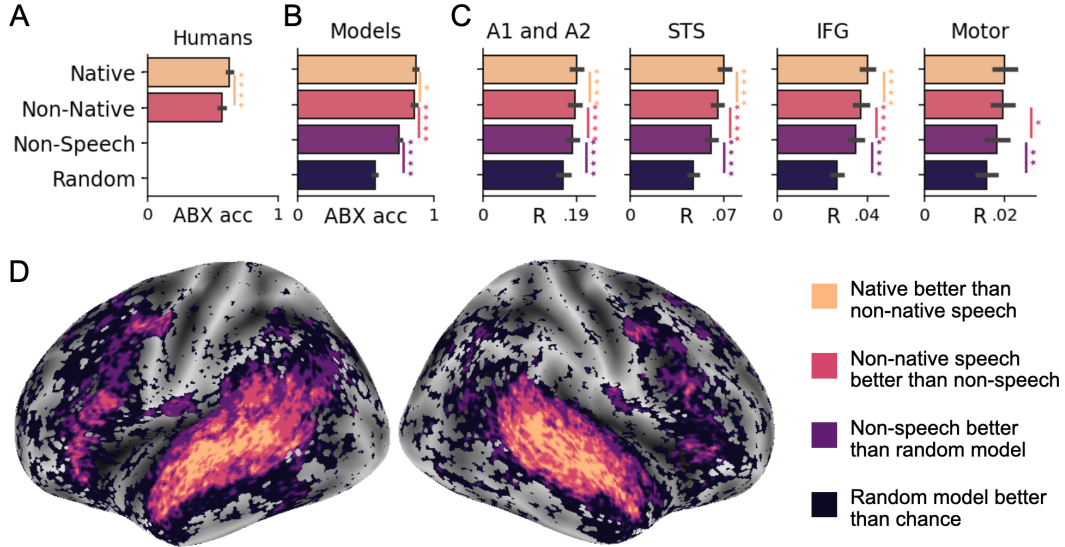


Figure 4: **The specialization of wav2vec 2.0’s representations follows and clarifies the acoustic, speech, and language regions in the brain.** **A.** We first evaluate humans’ language specificity by quantifying their ability to perceive phonemes of their native or non-native languages (Section 2.4) in a ABX matching-to-sample task [Schatz, 2016] (higher is better). As expected, humans are better at matching phonemes of their native language. **B.** Then, we train four wav2vec 2.0 models with self-supervised learning on four datasets – non-speech acoustic scenes, English, and French, and compute their ABX accuracy on the same speech datasets as humans. The ‘random’ model is wav2vec 2.0 without any training. **C.** Brain score ( $R$ ) of each model (with an added model trained on Mandarin), averaged across voxels, in four regions of the brain (Section 2.2). **D.** Acoustic, speech and language specificity for each voxel. For instance, one voxel is considered specific to the ‘native’ model if its native  $R$  score is higher than its ‘non-native’  $R$  score ( $p < .05$ ). Only the voxels with significant  $R$  scores for the untrained model are displayed ( $p < 10^{-18}$ ). Error bars are the SEM across phone pairs in A and B, and across subjects in C. The stars indicates a significant difference between two conditions (Section 2.3).

**Preprocessing.** For Narratives, we did not perform additional preprocessing: we use the public preprocessing of the dataset already projected on the surface space (“fsaverage6”) without spatial smoothing (labelled “afni-nosmooth” in the data repository). In contrast, the *Little Prince* dataset is only provided in a volumetric space. Consequently, for each language condition separately, we subselected the cortical voxels by computing a brain mask using the average of all participants’ fMRI data realigned onto a common template brain via Freesurfer [Fischl, 2012]. These voxels are then projected onto a brain surface using nilearn’s `vo1_to_surf` function with defaults parameters [Abraham et al., 2014] and a ‘fsaverage6’ template surface [Fischl, 2012]. For both *Narratives* and *The Little Prince*, fMRI signals are normalized across the time dimension to have a mean of 0 and a variance of 1, for each participant, surface voxel and session independently.

**Brain parcellation.** For the purposes of certain analyses, we group the fMRI voxels into regions of interest using the Destrieux Atlas [Destrieux et al., 2010]. This parcellation results in 75 brain regions in each hemisphere. For simplicity, we label the regions as follows: A1 and A2 represents Heschl gyrus, which is the anatomical location of the primary and secondary auditory cortices, STG and STS are the superior temporal gyrus and sulcus, and IFG is the inferior frontal gyrus.

### 2.3 Brain score (R)

To quantify the similarity between the network’s activations  $X$  and the brain recordings  $Y$ , we use a standard linear encoding model [Huth et al., 2016, Yamins and DiCarlo, 2016]. For each subject, we split the data into train and test sets using a five-fold cross-validation setting. For each train split, a

linear mapping  $W$  is fitted to predict the brain response  $Y_{\text{train}}$  given  $X_{\text{train}}$ .  $W$  combines a temporal alignment function with fixed weight, and a trained penalized linear regression.

**Temporal alignment.** The sampling frequency of the model’s activations (between 49 and 200 Hz) differs from the sampling frequency of fMRI BOLD signals (0.5 Hz). Furthermore, the BOLD signals have delayed responses spanning over several seconds. Thus, we first convolve the model activations with a standard hemodynamic response function (HRF) using `nistats` [Abraham et al., 2014] `compute_regressor` function with the ‘glover’ model and default parameters. This results in the convolved activations  $X'_{\text{train}}$  with the same sampling frequency as the fMRI  $Y_{\text{train}}$  (see A.3).

**Penalised linear regression.** Once temporally aligned, we fit an  $\ell_2$ -penalised linear regression that predicts the brain signals  $Y_{\text{train}}$  given the activations  $X_{\text{train}}$ . We use the `RidgeCV` function from `scikit-learn` [Pedregosa et al., 2011], with the penalization hyperparameter  $\lambda$  varying between  $10$  and  $10^8$  (20 values scaled logarithmically) chosen independently for each dimension with a nested cross-validation over the training set (see A.4).

**Evaluation.** We evaluate the linear mapping  $W$  on the held out sets by measuring Pearson’s correlation between predicted and actual brain responses:  $R = \text{corr}(Y_{\text{test}}, W \cdot X_{\text{test}})$ . Finally, we average the correlation scores across test splits to obtain the final “brain score”. To report the average layer  $k^*$  with the highest brain score for each voxel (Figure 3), while being robust to regression-to-the-mean biases, we first find the best layer  $k_s$  for each participant  $s$  and each voxel independently and then compute a circular mean across the  $N = 412$  participants and the  $K = 19$  layers:  $k^* = \text{angle}\left(\frac{1}{N} \sum_{s=1}^N \exp\left(\frac{2i\pi k_s}{K+1}\right)\right)$

**Statistics.** We assess the reliability of brain scores with second-level analyses across participants thanks to a Wilcoxon signed-rank test across participants. Thus, the resulting p-values are not affected by fMRI auto-correlation within participants. We perform statistical correction for multiple comparisons with Benjamini–Hochberg False Discovery Rate (FDR) across voxels [Benjamini, 2010].

## 2.4 Behavioral experiment

To compare the phonetic representations of our models to those of humans, we compare the forced-choice discrimination judgements of online participants<sup>6</sup> to an analogous method applied to `wav2vec 2.0` [Schatz, 2016]. Specifically, for each triplet of sound “ABX”, participants judged whether the stimulus X was more similar to A or B. Analogously, we computed the Euclidean distance in the most discriminative layer of `wav2vec 2.0` (here transformer layer 5) to determine whether X was closer to A or B. Additional data, analyses and model-human comparison can be found in [Millet and Dunbar, 2022]. We focus on the French and English stimuli, which represent  $\approx 6,000$  ABX triplets (testing 508 English and 524 French phone pairs), with 386 participants in total (193 from each language group).

In Figure 4-A, we report the ABX accuracy of English- and French-speaking participants in both their native and non-native language (either English or French). We first average results per phone pair, and then average over phone pairs to obtain the ABX discrimination accuracy. Similarly, in Figure 4-B, we compute the ABX accuracy of our `wav2vec 2.0` models on the same evaluation sets as the participants, using the parameters described in [Millet and Dunbar, 2022]. English and French models are evaluated on the same (‘native’) or different (‘non-native’) language stimuli as their training. The random and non-speech models are evaluated on both French and English speech stimuli.

## 3 Results

**Wav2vec 2.0 maps onto brain responses to speech.** We estimate whether the activations of `wav2vec 2.0` models linearly map onto the human brain activity of 412 individuals listening to audio books in the fMRI scanner. For this, we first independently train three models with 600 h of

<sup>6</sup><https://docs.cognitive-ml.fr/perceptimatic/>



French, English, or Mandarin, respectively, and compute the brain scores ( $R$ ) with the corresponding participants. Specifically, we (1) convolve the activations ( $X$ ) of the model with a hemodynamic response function (HRF), (2) train a  $\ell_2$ -penalized linear regression on a training split to map them to brain activity  $Y$ , and (3) compute the Pearson correlation coefficient between (i) the true fMRI activity and (ii) the predicted activations on a test split. The models’ activations significantly predict brain activity in nearly all cortical areas, reaching the highest  $R$  scores in the primary and secondary auditory cortices (Figure 2-A B). These scores are significantly higher than those obtained with a randomly initialised model ( $p < 10^{-50}$  on average across voxels), and this comparison is robust across language groups (all  $p < 10^{-5}$ ).

**Comparison of self-supervised to supervised models.** Does self-supervision reach representations that are as brain-like as those obtained with supervised learning? To address this issue, we trained wav2vec 2.0 with an alternative, supervised objective, namely, predicting phonetic annotations from the same 600 hours of effective speech sounds. We then implemented the  $R$  score analyses described above. The results show that self-supervised learning in fact leads to modestly but significantly better  $R$  scores than supervised learning (Figure 2-C):  $\Delta R = 0.002, p < 10^6$ .

**The hierarchy of wav2vec 2.0 maps onto the hierarchy of the cortex.** To compare the speech hierarchy in the brain with the functional hierarchy learned by wav2vec 2.0, we evaluate the  $R$  score of each layer of the model (Figure 3). First, we observe that convolutional layers are less predictive than transformer layers. Second, within the transformers, the hierarchy of representations aligns with the expected cortical hierarchy [Hickok and Poeppel, 2007]: while low-level areas (A1, A2) are best predicted by the first transformer layers, higher level areas (IFG, STS) are best predicted by deeper layers. Remarkably, this hierarchy extends to supplementary motor and motor areas in both hemispheres (Figure 3-A).

**Language specificity in phone discrimination tasks.** The acoustic features underlying speech (fricatives, vowels, and so on) may also characterize non-speech sounds (the sound of tree leaves in the wind, of a stone falling, and so on). Does the model show commonalities merely with general auditory processing in the brain, or does it capture speech-specific processing? If so, does it show commonalities with brain representations that are specific to the native language of the participants, or merely to general speech processing? We first evaluate the specialization of humans’ perception to their native language using an ABX behavioral task (Section 2.4). Specifically, we compare 386 French and English participants on their ability to distinguish native and non-native phones. As expected [Bohn, 2017, Kuhl et al., 2005], participants were better at discriminating native sounds than non-native ones (across phone pairs:  $p < 10^{-18}$ , Figure 4-A). Second, applying the same test to our self-supervised French and English models shows that, like humans, models best discriminate sounds from their ‘native’ language (i.e., the French model better distinguishes French stimuli than English ones, across phone pairs, and vice versa:  $p < 0.05$ ). Interestingly, the ABX accuracy of the model is significantly higher than participants’. This quantitative difference may be partially explained by the fact that participants – and online participants in particular – undergo fluctuating attention, and adopt strategies which can negatively impact performance [Humphreys, 1939]. Finally, as expected, the random and acoustic models obtain the worst ABX accuracy.

Overall, These results confirm that 600 h of self-supervised learning on effective speech suffices for wav2vec 2.0 to learn language-specific representations (Figure 4-B).

**Wav2vec 2.0 and the brain learn language specific representations.** Next, we compare the brain scores of random, non-speech, non-native and native models (Figure 4-CD). First, our results show that the non-speech model attains higher  $R$  scores than the random model (on average across voxels,  $\Delta R = 0.006, p = 10^{-31}$ ) confirming the importance of learning to generate brain-like representations. Second, non-native models attain higher  $R$  scores than the non-speech model ( $\Delta R = 0.002, p = 10^{-9}$ ), confirming that wav2vec 2.0 learns speech-specific representations of sounds when trained on speech. Finally, the native model attains higher  $R$  scores than non-native models ( $\Delta R = 0.002, p = 10^{-15}$ ).

## 4 Discussion

Human infants acquire language with little to no supervision: A few hundred hours of speech suffices for their young brain to learn to discretize phonemes, segment morphemes, and assemble words in the language(s) of their social group [Dupoux, 2018]. However, the learning principle that allows this unique feat remains, to date, unknown.

Here, we test whether self-supervised learning applied to a limited amount of speech effectively accounts for the organization of speech processing in the human brain as measured with fMRI. For this, we train several variants of wav2vec 2.0 [Baeovski et al., 2020] with three curated datasets of French, English, and Mandarin, and compare their activations to those of a large group of French, English, and Mandarin speakers recorded with fMRI while passively listening to audio stories. Our results show that this self-supervised model learns (1) representations that linearly map onto a remarkably distributed set of cortical regions (Figure 2), (2) a computational hierarchy that aligns with the cortical hierarchy (Figure 3), and (3) features specific to the language of the participants (Figure 4).

**Towards a biologically-plausible learning principle.** These results extend recent findings on the similarities between the brain and a variety of deep learning models trained with biologically-implausible objectives and data. First, fMRI [Kell et al., 2018, Millet and King, 2021, Thompson et al., 2021], electroencephalography [Huang et al., 2018], and multi- or single-unit responses to sounds [Koumura et al., 2019, Begus et al., 2022] have been shown to be linearly predicted by the activations of deep convolutional networks trained on *supervised* auditory tasks. For example, [Millet and King, 2021] showed that a supervised speech-to-text model better accounted for brain responses to speech in 102 individuals when it was trained on speech recognition rather than auditory scene classification. Similarly, [Kell et al., 2018] showed that eight participants listening to brief speech and non-speech sounds demonstrated fMRI responses in the temporal lobe that aligned with those of a deep convolutional neural network trained on a binary auditory classification task. Our results, based on up to 50 times more fMRI recordings of the entire cortex show that such representational similarities hold with a self-supervised objective [Lerner et al., 2011, Berezutskaya et al., 2017, Caucheteux et al., 2021c,b]. Second, a growing series of MEG [Toneva and Wehbe, 2019, Caucheteux and King, 2022], fMRI [Mitchell et al., 2008, Qian et al., 2016, Pereira et al., 2018, Schwartz et al., 2019, Antonello et al., 2021, Jain and Huth, 2018] and electro-physiology studies [Schrimpf et al., 2021, Goldstein et al., 2022] showed that text-based language models trained on very large corpora generate brain-like representations too. While these results suggest elements of convergence between language models and the brain [Caucheteux and King, 2022], they also remain biologically implausible: not only are these algorithms pre-equipped with abstract linguistic units such as characters and words, but they are trained on corpora that no one would ever be able to read in their lifetime. In contrast, wav2vec 2.0 is here trained with a reasonable amount of raw speech waveforms [Hart and Risley, 1992, Gilkerson et al., 2017, Dupoux, 2018]. The functional similarity between wav2vec 2.0 and the brain thus opens the way to clarify how humans learn to process speech.

**The emergence of a brain-like hierarchy of speech processing.** The present study reveals the hierarchical organization of speech processing with remarkable clarity. First, the functional hierarchy learnt by wav2vec 2.0 is aligned with the anatomy: *e.g.* the superior temporal sulcus and the temporal pole are known to project to the ventral and dorsal part of the inferofrontal gyrus, respectively [Petkov et al., 2015]. Second, the identification of functional gradients within the prefrontal cortex, and down to the motor areas typically associated with larynx and mouth control [Dichter et al., 2018] reinforces the relevance of motor processes to speech perception [Kellis et al., 2010, Mugler et al., 2014, Shamma et al., 2021]. Finally, the existence of multiple levels of representations around the inferofrontal cortex is consistent with the idea that Broca’s area may be responsible for merging linguistic units [Chomsky, 2000, Friederici, 1999, Hagoort, 2005, Poeppel et al., 2012]. It should be noted, however, that our results aggregate a large cohort of individuals which could mask a more modular organization at the individual level.

**Interpreting the neural representations of speech.** Interpreting neural representations is a notoriously difficult challenge to both AI and neuroscience. Here, we first investigate language specificity and show that the neural representations specific to the native models are primarily represented

in the superior temporal sulcus and middle temporal gyrus (Figure 4D): areas known to represent phonetic features [Mesgarani et al., 2014]. However, these effects are relatively modest (Figure 4): the random model and the non-speech model reach, in STS and STG, 67% and 87% of the brain scores obtained by the “native” model, respectively. While this high baseline initially surprised us, this phenomenon could be explained by the fact that the auditory cortex is continuously bombarded by – and should thus be tuned to – non-speech input. Second, our probing analyses show that the models trained with self-supervised learning learn relevant acoustic and linguistic representations (Supplementary Figure S1). This result, consistent with Vaidya et al. [2022], Stephenson et al. [2019], suggests that the difference of brain scores observed between the random, non-native and native models (Figure 4) may be partly driven by the corresponding spectro-temporal, phonetic, word and sentence-level representations, respectively. These elements of interpretation remain, however, scarce, and a systematic interpretation of the representations shared between wav2vec 2.0 and the brain remains necessary.

**Scope of the study.** It is important to stress that the scope of the present study could be broadened in several ways. First, our study focuses on adult speakers, whose cultural and educational background is not representative of the population [Henrich et al., 2010]. Second, we focus on the passive listening of three languages. Third, we focus on one self-supervised learning architecture [Baevski et al., 2020], and its functional alignment with fMRI, whose temporal resolution is notoriously limited. Generalizing the present approach to more languages [Malik-Moraleda et al., 2022], a larger spectrum of children and adult participants recorded with a variety of electrophysiological and neuroimaging devices will thus be essential to confirm, precise, and/or mitigate the present findings.

**The remaining gap between brain and speech models.** Several major gaps can be evidenced between wav2vec 2.0 and the brain. First, the transformer layers are not temporally constrained: each layer can access all elements within the contextual window. This differs from the necessarily recurrent nature of processing in the brain. Second, wav2vec 2.0 behaves differently to humans in specific tasks. In particular, it is overly-sensitive to band-pass filtering, non-robustly exploits fine temporal structures [Weerts et al., 2021] and fails to display the expected categorical responses [Millet et al., 2021]. Third, recent studies show that wav2vec 2.0 encodes significantly less semantic information than text-based models [Pasad et al., 2021, Vaidya et al., 2022]. While our analyses suggest that learning allows wav2vec 2.0 to capture some lexical features in its deep layers (Figure S1, Table S4), it remains unclear whether these layers also capture complex syntactic structures, such as recursive syntactic trees [Lakretz et al., 2021, Caucheteux et al., 2021a]. We speculate that these limitations may be due to the time scales of wav2vec 2.0 which, unlike humans, learns very short-term representations of speech. In any case, these differences likely explain why the brain scores of wav2vec 2.0 remain substantially lower than our noise-ceiling (19% on average, and up to 74% in Heschl’s gyrus and sulcus, Table S1, Figure S2).

Overall, the complexity of the human brain is often thought to be incompatible with a simple theory: “Even if there were enough data available about the contents of each brain area, there probably would not be a ready set of equations to describe them, their relationships, and the ways they change over time” [Gallant, 2013]. By showing how the equations of self-supervised learning give rise to brain-like processes, this work contributes to challenge this view.

## References

- Alexandre Abraham, Fabian Pedregosa, Michael Eickenberg, Philippe Gervais, Andreas Mueller, Jean Kossaifi, Alexandre Gramfort, Bertrand Thirion, and Gaël Varoquaux. Machine learning for neuroimaging with scikit-learn. *Frontiers in neuroinformatics*, 8:14, 2014.
- Richard Antonello, Javier S Turek, Vy Vo, and Alexander Huth. Low-dimensional structure in the space of language representations is reflected in brain responses. *Advances in Neural Information Processing Systems*, 34, 2021.
- Rosana Ardila, Megan Branson, Kelly Davis, Michael Kohler, Josh Meyer, Michael Henretty, Reuben Morais, Lindsay Saunders, Francis M Tyers, and Gregor Weber. Common voice: A massively-multilingual speech corpus. In *LREC*, 2020.
- Alexei Baevski, H. Zhou, Abdel rahman Mohamed, and Michael Auli. wav2vec 2.0: A framework for self-supervised learning of speech representations. *ArXiv*, abs/2006.11477, 2020.

- Adrien Bardes, Jean Ponce, and Yann LeCun. Vicreg: Variance-invariance-covariance regularization for self-supervised learning. *arXiv preprint arXiv:2105.04906*, 2021.
- Gasper Begus, Alan Zhou, and Christina Zhao. Encoding of speech in convolutional layers and the brain stem based on language experience. *bioRxiv*, 2022.
- Yoav Benjamini. Discovering the false discovery rate. *Journal of the Royal Statistical Society: series B (statistical methodology)*, 72(4):405–416, 2010.
- Julia Berezutskaya, Zachary V Freudenburg, Umut Güçlü, Marcel AJ van Gerven, and Nick F Ramsey. Neural tuning to low-level features of speech throughout the perisylvian cortex. *Journal of Neuroscience*, 37(33):7906–7920, 2017.
- Ocke-Schwen Bohn. Cross-language and second language speech perception. *The handbook of psycholinguistics*, pages 213–239, 2017.
- Lasse Borgholt, Jakob Drachmann Havtorn, Joakim Edin, Lars Maaløe, and Christian Igel. A brief overview of unsupervised neural speech representation learning. *arXiv preprint arXiv:2203.01829*, 2022.
- Charlotte Caucheteux and Jean-Rémi King. Brains and algorithms partially converge in natural language processing. *Communications Biology*, 5(1):1–10, 2022.
- Charlotte Caucheteux, Alexandre Gramfort, and Jean-Remi King. Disentangling syntax and semantics in the brain with deep networks. In *Proceedings of the 38th International Conference on Machine Learning*, pages 1336–1348. PMLR, July 2021a. ISSN: 2640-3498.
- Charlotte Caucheteux, Alexandre Gramfort, and Jean-Remi King. Long-range and hierarchical language predictions in brains and algorithms. *arXiv:2111.14232 [cs, q-bio]*, November 2021b. arXiv: 2111.14232.
- Charlotte Caucheteux, Alexandre Gramfort, and Jean-Remi King. Model-based analysis of brain activity reveals the hierarchy of language in 305 subjects. In *Findings of the Association for Computational Linguistics: EMNLP 2021*, pages 3635–3644, Punta Cana, Dominican Republic, November 2021c. Association for Computational Linguistics.
- Charlotte Caucheteux, Alexandre Gramfort, and Jean-Rémi King. Deep language algorithms predict semantic comprehension from brain activity. *Scientific Reports*, 12(1):16327, September 2022. ISSN 2045-2322. doi: 10.1038/s41598-022-20460-9. Number: 1 Publisher: Nature Publishing Group.
- Noam Chomsky. Linguistics and brain science. *Image, language, brain*, pages 13–28, 2000.
- Radoslaw M Cichy and Daniel Kaiser. Deep neural networks as scientific models. *Trends in cognitive sciences*, 23(4):305–317, 2019.
- Beijing Magic Data Technology Co. Magic data chinese mandarin conversational speech. [http://www.imagicdatatech.com/index.php/home/dataopensource/data\\_info/id/101](http://www.imagicdatatech.com/index.php/home/dataopensource/data_info/id/101), 2019.
- Christophe Destrieux, Bruce Fischl, Anders Dale, and Eric Halgren. Automatic parcellation of human cortical gyri and sulci using standard anatomical nomenclature. *NeuroImage*, 53(1):1–15, October 2010. ISSN 1053-8119. doi: 10.1016/j.neuroimage.2010.06.010.
- Benjamin K Dichter, Jonathan D Breshears, Matthew K Leonard, and Edward F Chang. The control of vocal pitch in human laryngeal motor cortex. *Cell*, 174(1):21–31, 2018.
- Emmanuel Dupoux. Cognitive science in the era of artificial intelligence: A roadmap for reverse-engineering the infant language-learner. *Cognition*, 173:43–59, 2018.
- Bruce Fischl. Freesurfer. *Neuroimage*, 62(2):774–781, 2012.
- Angela D Friederici. The neurobiology of language comprehension. In *Language comprehension: A biological perspective*, pages 265–304. Springer, 1999.

- Jack Gallant. in 'reading minds'. *Nature*, 502(7472):428, 2013.
- Jort F Gemmeke, Daniel PW Ellis, Dylan Freedman, Aren Jansen, Wade Lawrence, R Channing Moore, Manoj Plakal, and Marvin Ritter. Audio set: An ontology and human-labeled dataset for audio events. In *2017 IEEE International Conference on Acoustics, Speech and Signal Processing (ICASSP)*, pages 776–780. IEEE, 2017.
- Jill Gilkerson, Jeffrey A Richards, Steven F Warren, Judith K Montgomery, Charles R Greenwood, D Kimbrough Oller, John HL Hansen, and Terrance D Paul. Mapping the early language environment using all-day recordings and automated analysis. *American journal of speech-language pathology*, 26(2):248–265, 2017.
- Ariel Goldstein, Zaid Zada, Eliav Buchnik, Mariano Schain, Amy Price, Bobbi Aubrey, Samuel A Nastase, Amir Feder, Dotan Emanuel, Alon Cohen, et al. Shared computational principles for language processing in humans and deep language models. *Nature neuroscience*, 25(3):369–380, 2022.
- Alex Graves. Connectionist temporal classification. In *Supervised Sequence Labelling with Recurrent Neural Networks*, pages 61–93. Springer, 2012.
- Peter Hagoort. On broca, brain, and binding: a new framework. *Trends in cognitive sciences*, 9(9): 416–423, 2005.
- Betty Hart and Todd R Risley. American parenting of language-learning children: Persisting differences in family-child interactions observed in natural home environments. *Developmental psychology*, 28(6):1096, 1992.
- Joseph Henrich, Steven J. Heine, and Ara Norenzayan. The weirdest people in the world? *Behavioral and Brain Sciences*, 33(2-3):61–83, June 2010. ISSN 0140-525X, 1469-1825. doi: 10.1017/S0140525X0999152X.
- Gregory Hickok and David Poeppel. The cortical organization of speech processing. *Nature reviews neuroscience*, 8(5):393–402, 2007.
- Nicholas Huang, Malcolm Slaney, and Mounya Elhilali. Connecting deep neural networks to physical, perceptual, and electrophysiological auditory signals. *Frontiers in neuroscience*, 12:532, 2018.
- L. G. Humphreys. Acquisition and extinction of verbal expectations in a situation analogous to conditioning. *Journal of Experimental Psychology*, 25:294–301, 1939. ISSN 0022-1015. doi: 10.1037/h0053555. Place: US Publisher: American Psychological Association.
- Alexander G. Huth, Wendy A. de Heer, Thomas L. Griffiths, Frédéric E. Theunissen, and Jack L. Gallant. Natural speech reveals the semantic maps that tile human cerebral cortex. *Nature*, 532(7600):453–458, April 2016. ISSN 0028-0836, 1476-4687. doi: 10.1038/nature17637.
- Shailee Jain and Alexander Huth. Incorporating context into language encoding models for fmri. *Advances in neural information processing systems*, 31, 2018.
- Alexander JE Kell and Josh H McDermott. Deep neural network models of sensory systems: windows onto the role of task constraints. *Current opinion in neurobiology*, 55:121–132, 2019.
- Alexander JE Kell, Daniel LK Yamins, Erica N Shook, Sam V Norman-Haignere, and Josh H McDermott. A task-optimized neural network replicates human auditory behavior, predicts brain responses, and reveals a cortical processing hierarchy. *Neuron*, 98(3):630–644, 2018.
- Spencer Kellis, Kai Miller, Kyle Thomson, Richard Brown, Paul House, and Bradley Greger. Decoding spoken words using local field potentials recorded from the cortical surface. *Journal of neural engineering*, 7(5):056007, 2010.
- Tim C Kietzmann, Patrick McClure, and Nikolaus Kriegeskorte. Deep neural networks in computational neuroscience. *BioRxiv*, page 133504, 2018.
- Takuya Koumura, Hiroki Terashima, and Shigeto Furukawa. Cascaded tuning to amplitude modulation for natural sound recognition. *Journal of Neuroscience*, 39(28):5517–5533, 2019.

- Nikolaus Kriegeskorte. Deep neural networks: a new framework for modeling biological vision and brain information processing. *Annual review of vision science*, 1:417–446, 2015.
- Patricia K Kuhl, Barbara T Conboy, Denise Padden, Tobey Nelson, and Jessica Pruitt. Early speech perception and later language development: Implications for the "critical period". *Language learning and development*, 1(3-4):237–264, 2005.
- Yair Lakretz, Théo Desbordes, Jean-Rémi King, Benoît Crabbé, Maxime Oquab, and Stanislas Dehaene. Can RNNs learn Recursive Nested Subject-Verb Agreements? *arXiv:2101.02258 [cs]*, January 2021. URL <http://arxiv.org/abs/2101.02258>. arXiv: 2101.02258.
- Y. Lerner, C. J. Honey, L. J. Silbert, and U. Hasson. Topographic Mapping of a Hierarchy of Temporal Receptive Windows Using a Narrated Story. *Journal of Neuroscience*, 31(8):2906–2915, February 2011. ISSN 0270-6474, 1529-2401. doi: 10.1523/JNEUROSCI.3684-10.2011.
- Jixing Li, Shohini Bhattasali, Shulin Zhang, Berta Franzluebbers, Wen-Ming Luh, R Nathan Spreng, Jonathan R Brennan, Yiming Yang, Christophe Pallier, and John T Hale. Le petit prince: A multilingual fmri corpus using ecological stimuli. *bioRxiv*, 2021.
- Saima Malik-Moraleda, Dima Ayyash, Jeanne Gallée, Josef Affourtit, Malte Hoffmann, Zachary Mineroff, Olessia Jouravlev, and Evelina Fedorenko. An investigation across 45 languages and 12 language families reveals a universal language network. *Nature Neuroscience*, 25(8):1014–1019, August 2022. ISSN 1546-1726. doi: 10.1038/s41593-022-01114-5. Number: 8 Publisher: Nature Publishing Group.
- Nima Mesgarani, Connie Cheung, Keith Johnson, and Edward F. Chang. Phonetic Feature Encoding in Human Superior Temporal Gyrus. *Science*, 343(6174):1006–1010, February 2014. ISSN 0036-8075, 1095-9203. doi: 10.1126/science.1245994. Publisher: American Association for the Advancement of Science Section: Report.
- Juliette Millet and Ewan Dunbar. Do self-supervised speech models develop human-like perception biases? *AAAI 2022 Workshop, Self-Supervised Learning for Audio and Speech Processing*, 2022.
- Juliette Millet and Jean-Remi King. Inductive biases, pretraining and fine-tuning jointly account for brain responses to speech. *arXiv preprint arXiv:2103.01032*, 2021.
- Juliette Millet, Ioana Chitoran, and Ewan Dunbar. Predicting non-native speech perception using the perceptual assimilation model and state-of-the-art acoustic models. In *Proceedings of the 25th Conference on Computational Natural Language Learning*, pages 661–673, Online, November 2021. Association for Computational Linguistics. doi: 10.18653/v1/2021.conll-1.51.
- Tom M Mitchell, Svetlana V Shinkareva, Andrew Carlson, Kai-Min Chang, Vicente L Malave, Robert A Mason, and Marcel Adam Just. Predicting human brain activity associated with the meanings of nouns. *science*, 320(5880):1191–1195, 2008.
- Emily M Mugler, James L Patton, Robert D Flint, Zachary A Wright, Stephan U Schuele, Joshua Rosenow, Jerry J Shih, Dean J Krusienski, and Marc W Slutzky. Direct classification of all american english phonemes using signals from functional speech motor cortex. *Journal of neural engineering*, 11(3):035015, 2014.
- Thomas Naselaris, Kendrick N Kay, Shinji Nishimoto, and Jack L Gallant. Encoding and decoding in fmri. *Neuroimage*, 56(2):400–410, 2011.
- Samuel A Nastase, Yun-Fei Liu, Hanna Hillman, Asieh Zadbood, Liat Hasenfratz, Neggin Keshavarzian, Janice Chen, Christopher J Honey, Yaara Yeshurun, Mor Regev, et al. Narratives: fmri data for evaluating models of naturalistic language comprehension. preprint. *Neuroscience*, December, pages 2020–06, 2020.
- Vassil Panayotov, Guoguo Chen, Daniel Povey, and Sanjeev Khudanpur. Librispeech: an asr corpus based on public domain audio books. In *2015 IEEE international conference on acoustics, speech and signal processing (ICASSP)*, pages 5206–5210. IEEE, 2015.
- Ankita Pasad, Ju-Chieh Chou, and Karen Livescu. Layer-wise analysis of a self-supervised speech representation model. *arXiv preprint arXiv:2107.04734*, 2021.

- Fabian Pedregosa, Gaël Varoquaux, Alexandre Gramfort, Vincent Michel, Bertrand Thirion, Olivier Grisel, Mathieu Blondel, Peter Prettenhofer, Ron Weiss, Vincent Dubourg, et al. Scikit-learn: Machine learning in python. *the Journal of machine Learning research*, 12:2825–2830, 2011.
- Francisco Pereira, Bin Lou, Brianna Pritchett, Samuel Ritter, Samuel J Gershman, Nancy Kanwisher, Matthew Botvinick, and Evelina Fedorenko. Toward a universal decoder of linguistic meaning from brain activation. *Nature communications*, 9(1):1–13, 2018.
- Christopher I. Petkov, Yukiko Kikuchi, Alice E. Milne, Mortimer Mishkin, Josef P. Rauschecker, and Nikos K. Logothetis. Different forms of effective connectivity in primate frontotemporal pathways. *Nature Communications*, 6(1):6000, January 2015. ISSN 2041-1723. doi: 10.1038/ncomms7000. Number: 1 Publisher: Nature Publishing Group.
- David Poeppel, Karen Emmorey, Gregory Hickok, and Liina Pyykkänen. Towards a new neurobiology of language. *Journal of Neuroscience*, 32(41):14125–14131, 2012.
- Peng Qian, Xipeng Qiu, and Xuanjing Huang. Bridging lstm architecture and the neural dynamics during reading. *arXiv preprint arXiv:1604.06635*, 2016.
- Alec Radford, Jeffrey Wu, Rewon Child, David Luan, Dario Amodei, Ilya Sutskever, et al. Language models are unsupervised multitask learners. *OpenAI blog*, 1(8):9, 2019.
- Thomas Schatz. *ABX-discriminability measures and applications*. PhD thesis, Université Paris 6 (UPMC), 2016.
- Martin Schrimpf, Idan Asher Blank, Greta Tuckute, Carina Kauf, Eghbal A Hosseini, Nancy Kanwisher, Joshua B Tenenbaum, and Evelina Fedorenko. The neural architecture of language: Integrative modeling converges on predictive processing. *Proceedings of the National Academy of Sciences*, 118(45), 2021.
- Dan Schwartz, Mariya Toneva, and Leila Wehbe. Inducing brain-relevant bias in natural language processing models. *Advances in neural information processing systems*, 32, 2019.
- Shihab Shamma, Prachi Patel, Shoutik Mukherjee, Guilhem Marion, Bahar Khalighinejad, Cong Han, Jose Herrero, Stephan Bickel, Ashesh Mehta, and Nima Mesgarani. Learning speech production and perception through sensorimotor interactions. *Cerebral cortex communications*, 2(1):tgaa091, 2021.
- Cory Stephenson, Jenelle Feather, Suchismita Padhy, Oguz Elibol, Hanlin Tang, Josh McDermott, and SueYeon Chung. Untangling in invariant speech recognition. *Advances in neural information processing systems*, 32, 2019.
- Jessica AF Thompson, Yoshua Bengio, Elia Formisano, and Marc Schönwiesner. Training neural networks to recognize speech increased their correspondence to the human auditory pathway but did not yield a shared hierarchy of acoustic features. *bioRxiv*, 2021.
- Mariya Toneva and Leila Wehbe. Interpreting and improving natural-language processing (in machines) with natural language-processing (in the brain). *arXiv:1905.11833 [cs, q-bio]*, November 2019. arXiv: 1905.11833.
- Aditya R Vaidya, Shailee Jain, and Alexander G Huth. Self-supervised models of audio effectively explain human cortical responses to speech. *arXiv preprint arXiv:2205.14252*, 2022.
- Changhan Wang, Morgane Riviere, Ann Lee, Anne Wu, Chaitanya Talnikar, Daniel Haziza, Mary Williamson, Juan Pino, and Emmanuel Dupoux. Voxpopuli: A large-scale multilingual speech corpus for representation learning, semi-supervised learning and interpretation. *arXiv preprint arXiv:2101.00390*, 2021.
- Lotte Weerts, Stuart Rosen, Claudia Clopath, and Dan FM Goodman. The psychometrics of automatic speech recognition. *bioRxiv*, 2021.
- Qiantong Xu, Alexei Baevski, Tatiana Likhomanenko, Paden Tomasello, Alexis Conneau, Ronan Collobert, Gabriel Synnaeve, and Michael Auli. Self-training and Pre-training are Complementary for Speech Recognition, October 2020. arXiv:2010.11430 [cs, eess].

## Checklist

1. For all authors...
  - (a) Do the main claims made in the abstract and introduction accurately reflect the paper’s contributions and scope? [Yes] See Section 3
  - (b) Did you describe the limitations of your work? [Yes] See Section 4
  - (c) Did you discuss any potential negative societal impacts of your work? [N/A]
  - (d) Have you read the ethics review guidelines and ensured that your paper conforms to them? [Yes] We have, and since we use results of human experiments that were previously made, and that respect these review guidelines, we conform to them.
2. If you are including theoretical results...
  - (a) Did you state the full set of assumptions of all theoretical results? [N/A] No theoretical results
  - (b) Did you include complete proofs of all theoretical results? [N/A] No theoretical results
3. If you ran experiments...
  - (a) Did you include the code, data, and instructions needed to reproduce the main experimental results (either in the supplemental material or as a URL)? [Yes] The code will be provided upon request. Otherwise for the rest, see Section 2.2 and 2.1.3
  - (b) Did you specify all the training details (e.g., data splits, hyperparameters, how they were chosen)? [Yes] See Section 2.1.3.
  - (c) Did you report error bars (e.g., with respect to the random seed after running experiments multiple times)? [Yes] This is the case for all our figures, see Figure 2, 3 and 4
  - (d) Did you include the total amount of compute and the type of resources used (e.g., type of GPUs, internal cluster, or cloud provider)? [No] The models we train are not new: the original papers already give that type of information.
4. If you are using existing assets (e.g., code, data, models) or curating/releasing new assets...
  - (a) If your work uses existing assets, did you cite the creators? [Yes] See Section 2.2, 2.1.3, and 2.4.
  - (b) Did you mention the license of the assets? [No] They are all under CC0 for the English and French training audio data, the Perceptomatic Benchmark, The Little Prince dataset and the Narratives dataset. Magic data is under CC BY-NC-ND 4.0, Audioset is under CC BY 4.0 for the audio recordings, and CC BY-SA 4.0 for the ontology, Narratives’ preprocessing code is under GNU GENERAL PUBLIC LICENSE and fairseq code is under MIT License.
  - (c) Did you include any new assets either in the supplemental material or as a URL? [No] The code will be given upon request
  - (d) Did you discuss whether and how consent was obtained from people whose data you’re using/curating? [Yes] See Section 2.2 and 2.4. More details on the way they gave their consent can be seen in the original papers/websites that provided the experimental results.
  - (e) Did you discuss whether the data you are using/curating contains personally identifiable information or offensive content? [N/A] The data were anonymized before we used them.
5. If you used crowdsourcing or conducted research with human subjects...
  - (a) Did you include the full text of instructions given to participants and screenshots, if applicable? [N/A] We did not conduct the experiments ourselves
  - (b) Did you describe any potential participant risks, with links to Institutional Review Board (IRB) approvals, if applicable? [N/A] We did not conduct the experiments ourselves



(c) Did you include the estimated hourly wage paid to participants and the total amount spent on participant compensation? [N/A] We did not conduct the experiments ourselves

## A Appendix

### A.1 Self-supervised loss formula

Wav2vec 2.0, when trained in a self-supervised way, uses a loss ( $L$ ) which is the weighted combination of two losses: one diversity loss ( $L_d$ ), which pushes the quantization module to contain representations that are as diverse as possible, and one Contrastive Predictive Coding loss ( $L_m$ ), which pushes the model to choose, from the context network output  $c$ , the right quantized representation ( $q$ ) of some masked input, among other possible representations.  $L_m$  has the following formula, for some masked time step  $t$ :

$$\mathcal{L}_m = -\log \frac{\exp(\text{sim}(\mathbf{c}_t, \mathbf{q}_t) / \kappa)}{\sum_{\tilde{\mathbf{q}} \sim \mathbf{Q}_t} \exp(\text{sim}(\mathbf{c}_t, \tilde{\mathbf{q}}) / \kappa)} \quad (1)$$

with  $\text{sim}(\mathbf{a}, \mathbf{b}) = \mathbf{a}^T \mathbf{b} / \|\mathbf{a}\| \|\mathbf{b}\|$ ,  $\kappa$  the temperature, which is constant during training,  $\mathbf{Q}_t$  the set of  $K + 1$  quantized candidate the model has to choose from, including the right one, i.e.  $q_t$ .

$L_d$  is included to encourage the equal use of the  $V$  possible entries of each of the  $G$  codebooks of the quantization module. The goal is to maximize the entropy of the averaged softmax distribution over the codebook entries for each codebook  $\bar{p}_g$ , across a set of utterances:

$$\mathcal{L}_d = \frac{1}{GV} \sum_{g=1}^G -H(\bar{p}_g) = \frac{1}{GV} \sum_{g=1}^G \sum_{v=1}^V \bar{p}_{g,v} \log \bar{p}_{g,v} \quad (2)$$

### A.2 Supervised loss formula

When trained in a supervised way, wav2vec 2.0 is trained to optimise a Connectionist Temporal Classification loss parameterized over  $\theta$ :

$$\text{argmin}_{\theta} -\log \sum_{a \in a_{U,V}} \prod_{t=1}^{d_t} p_{\text{CTC}}(a_t | m_{\theta}(U)) \quad , \quad (3)$$

where  $m_{\theta}(U) \in \mathbb{R}^{d_{\tau} \times d_v}$  are the probabilistic predictions of the model at each  $\tau$  time sample given the input raw waveform  $U \in \mathbb{R}^{d_{\tau} \times d_u}$ ,  $V \in \mathbb{R}^{d_t \times d_v}$  are the true transcriptions of  $U$ , and  $a_{U,V}$  is the set of all possible alignments between  $U$  and  $V$ .

### A.3 Preprocessing of the model’s activations

The activations of the network  $X \in \mathbb{R}^{d_i \times d_x}$  are first normalized to be between  $[0, 1]$  for each listening session. Then, we use nistats [Abraham et al., 2014] `compute_regressor` function with the ‘glover’ model to temporally convolve ( $h \in \mathbb{R}^{d_i}$ ) and temporally down-sample (using  $g : \mathbb{R}^{d_i} \rightarrow \mathbb{R}^{d_t}$ ) each artificial neuron  $j$ :

$$\hat{x}^{(j)} = g(x^{(j)} * h) \quad . \quad (4)$$

### A.4 Penalized linear model - Ridge regression

For each split  $s$ , we fit an  $\ell_2$ -penalized linear model  $V \in \mathbb{R}^{d_x \times d_s}$  trained to predict the transformed BOLD time series from the model activations for each dimension independently. The formula of the optimization is the following:

$$\text{argmin}_V \sum_{i \in \text{train}_s} (V^T \hat{X}_i - y_i)^2 + \lambda \|V\|^2 \quad . \quad (5)$$

### A.5 Probing the linguistic features encoded in wav2vec2 activations

Interpreting the representations of deep learning models is notoriously difficult. To address this issue, [Pasad et al., 2021] explored the encoding of local acoustic features, phone identity, word identity and word meaning across layers. Similarly, [Millet et al., 2021] compared representations

to human behavioural data to assess whether they better captured listeners’ perception of higher-level phonemic properties or of lower-level subphonemic properties of speech stimuli. Finally, [Vaidya et al., 2022] recent study explores filter banks, spectrograms, phonemes and words across layers. Here, we complement these analyses by showing that self-supervised learning allows wav2vec 2.0 to learn represents, along its hierarchy the representations of MEL spectrograms, phonetic categories and word embeddings (Figure S1).

For this, we perform a ridge regression on the Timit dataset<sup>7</sup> to predict five auditory and linguistic features from the activation functions of each layer and model of the present paper. We study the following features:

- the MEL spectrogram of the audio, computed using librosa (d=128)
- the phonemes (categorical features). We use the transcripts and alignments provided in Timit.
- the word embedding and part-of-speech of the words. The time alignments for words are provided by Timit. We use spaCy to compute the word embedding (medium model, d=300), and their part-of-speech (categorical feature, d=19).
- the sentence embedding of each sample, provided by Laser.

We use a subset of 1,680 samples from Timit, each sample being an audio recording of a short sentence (<10 seconds) from 24 speakers. The model’s activations were mean-pooled to the sampling rate of each feature.

The results show that the layers of wav2vec 2.0 partially follow the hierarchy predicted from neuro-linguistics [Hickok and Poeppel, 2007] (Table S4): the first layers of the transformer best account for the spectro-temporal information, whereas deeper layers best account for the phonetic, word-level and sentence level information. While all of these features emerge with training (Figure S1), only the highest-level features (phone, word and sentence-level) appear to be specific to speech and to the language with which wav2vec 2.0 was trained (Figure S1).

Interestingly, the word and sentence-level features are encoded deeper in the supervised network (best layer=18 in Table S4) compared to the unsupervised network (best layer=14), which suggests that self-supervised learning generates a reservoir representations in its middle layers, reservoir which may partly overlap with the labels used in supervised learning. Together with our ABX tests, and layer-wise tuning of each voxel (Figure 3), these elements suggest that the representations of speech shaped by our experience are learnt and instantiated in the superior temporal gyrus and sulcus. These elements, consistent with previous electrophysiological studies [Mesgarani et al., 2014], thus provide a coherent spectrum of evidence for the location of acquired speech representations in the brain.

### A.6 Noise ceiling analysis

The noise in fMRI recordings is inevitable. To estimate the maximum explainable signal given this level of noise, we follow previous studies and employ a shared-response model, or "noise ceiling" [Huth et al., 2016, Caucheteux and King, 2022, Caucheteux et al., 2022]. Precisely, we predict the brain signals of one subject given the brain activity of the other subjects, in response to the same audio recording. In practice, we apply the same evaluation as Equation (2.3), for one subject  $s$  and one voxel  $v$ , but we use the average brain signals of other subjects’ brains  $\bar{Y}^{(s)} = \frac{1}{|S|} \sum_{s' \neq s} Y^{(s')}$  instead of the activations  $X$ . As a result, the "noise ceiling" of one subject ( $s$ ) and one voxel ( $v$ ) is computed as follows:

$$R_{\text{noiseceiling}} = \text{Corr}(W \cdot \bar{Y}^{(s)}, Y^{(s,v)}) \quad , \quad (6)$$

where  $W$  is an  $\ell_2$ -penalized linear regression fitted on separate train data, using a cross validation setting with five test folds.

We compute such noise ceiling on 290 subjects of the Narrative dataset listening to the same stories (Figure S2). We report the noise ceiling across voxels in Figure S2, and, in Table S1, the brain scores of the networks studied in the main paper normalised by the noise ceiling. Precisely, for each

<sup>7</sup><https://catalog.ldc.upenn.edu/LDC93S1>

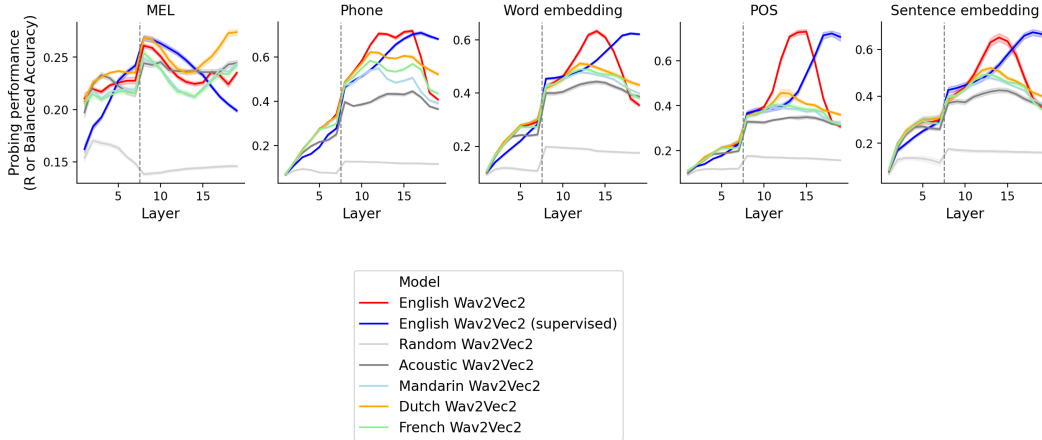


Figure S1: **Linguistic features encoded in each layer of the networks.** For each layer of each network, we train a l2-penalized linear model from scikit-learn [Pedregosa et al., 2011] to predict several linguistic categories given the embedding. The tested categories are the following: MEL (the MEL spectrogram of the audio,  $d=128$ ), phone (the phoneme, categorical,  $d=39$ ), the word embedding of the word (computed with spaCy (<https://spacy.io>) English model,  $d=300$ ), the Part-Of-Speech (POS) of the word provided by spaCy (categorical feature,  $n=19$ ), and the embedding of the sentence, computed using Laser (<https://github.com/facebookresearch/LASER>) ( $d=1,024$ ). We train and test the linear probe on a subset of Timit data (<https://catalog.ldc.upenn.edu/LDC93s1>), using a 10-folds cross-validation scheme, and report the probing accuracy (either  $R$  for continuous variables or balanced accuracy for categorical variables) for each possible target feature. We average the corresponding probing performances across the 10 folds. Error bars are standard errors of the mean across folds.

	Average	Top10	Heschl	STG	STS	IFG	Motor
Random wav2vec2	13.9%	29.0%	66.9%	32.0%	21.8%	15.9%	11.9%
Non-Speech	16.4%	33.9%	71.0%	36.8%	26.9%	19.0%	11.7%
Non-Native	17.6%	35.9%	73.0%	39.0%	29.1%	21.0%	12.9%
Native, Supervised	18.3%	36.7%	74.2%	39.6%	29.8%	21.2%	13.6%
Native, Unsupervised	18.8%	37.9%	74.4%	40.3%	31.3%	22.8%	13.8%
Noise ceiling	100.0%	100.0%	100.0%	100.0%	100.0%	100.0%	100.0%

Table S1: **Brain scores with noise ceiling normalisation.** Brain scores divided by the noise ceiling, for the Narrative dataset, on average across all voxels (‘Average’), for the 10% best voxels of the noise ceiling (‘Top10’, Figure A.6) and the voxels of five regions of interests.

voxel, we divide the average brain scores by the noise ceiling for this particular voxel. While low on average, the unsupervised wav2vec2 model reaches 74% of the noise ceiling in Heschel, and more than 20% in STS, STS and IFG.

Below, we report the brain scores of our models, normalised by such noise ceiling. Precisely, we compute the brain scores for each subject and voxels

	Average	Top10	Heschl	STG	STS	IFG	Motor
Random wav2vec2	0.019	0.069	0.192	0.071	0.044	0.024	0.011
Non-Speech	0.022	0.080	0.205	0.081	0.055	0.028	0.011
Non-Native	0.024	0.085	0.211	0.086	0.059	0.031	0.012
Native, Supervised	0.025	0.086	0.213	0.087	0.060	0.032	0.013
Native, Unsupervised	0.025	0.089	0.214	0.089	0.063	0.034	0.013
Noise ceiling	0.117	0.219	0.287	0.181	0.196	0.149	0.094

Table S2: **Brain scores without noise ceiling normalisation** Same as Table S1, but without dividing by the noise ceiling estimates.

	Avg	Top10NoiseCeil	Heschl	STG	STS	IFG	Motor
Unsupervised	0.03 +/- 0.001	0.09 +/- 0.002	0.21 +/- 0.007	0.09 +/- 0.003	0.06 +/- 0.002	0.03 +/- 0.001	0.01 +/- 0.001
Supervised	0.02 +/- 0.001	0.09 +/- 0.002	0.21 +/- 0.007	0.09 +/- 0.003	0.06 +/- 0.002	0.03 +/- 0.001	0.01 +/- 0.001
Noise ceiling	0.12 +/- 0.006	0.22 +/- 0.006	0.29 +/- 0.008	0.18 +/- 0.006	0.20 +/- 0.006	0.15 +/- 0.006	0.09 +/- 0.006
Ratio	0.19 +/- 0.006	0.38 +/- 0.010	0.74 +/- 0.025	0.40 +/- 0.013	0.31 +/- 0.011	0.23 +/- 0.010	0.14 +/- 0.014

Table S3: Brain scores and noise ceiling estimates. Ratio indicate the unsupervised model divided by the noise ceiling. Scores are averaged across subjects and either all the voxels ('Avg') or the voxels of the selected regions of interests.

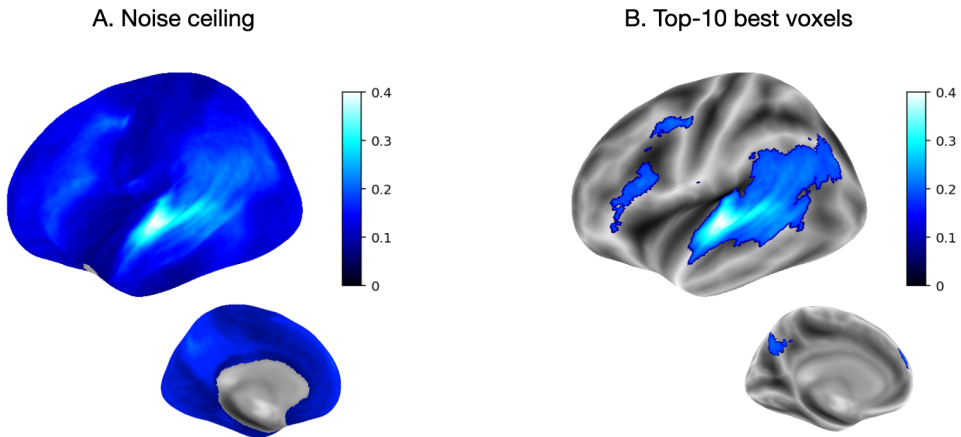


Figure S2: **Noise ceiling.** **A.** Noise ceiling estimates computed on 290 subjects of the Narratives dataset, averaged across subject. We only display the significant voxels across subjects ( $p < 10^{-18}$ ). **B.** Same as A, but we only display the 10% voxels with the best noise ceiling estimates on average across subjects.

	MEL	Phone	Wordemb	POS	Sentemb	Average
Random wav2vec2	2.0	8.7	8.0	8.9	8.1	7.1
Acoustic wav2vec2	12.5	15.7	14.0	14.4	14.2	14.2
Mandarin wav2vec2	9.1	11.9	12.2	11.9	13.0	11.6
French wav2vec2	8.0	11.0	12.7	11.8	13.0	11.3
Dutch wav2vec2	18.9	11.4	12.0	12.4	13.0	13.5
English wav2vec2	8.0	15.2	14.0	14.4	14.0	13.1
English wav2vec2 (supervised)	8.0	16.9	18.0	18.0	18.0	15.8
Avg	9.5	13.0	13.0	13.1	13.3	12.4

Table S4: For each model (row) and target (column), the layer that maximizes probing performance (Figure S1), averaged across the 10 cross-validation folds.

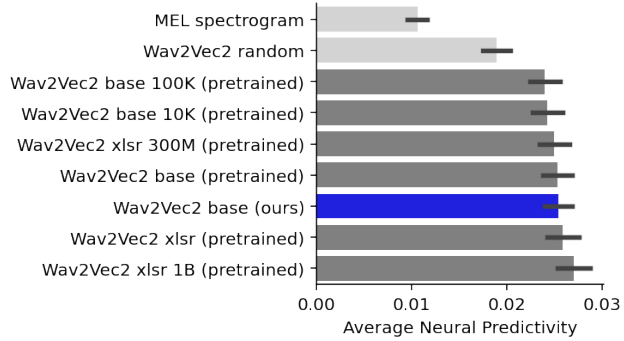


Figure S3: **Brain scores of self-supervised pre-trained models.** Brain scores, averaged across all voxels and subjects, for the MEL spectrogram, a wav2vec2 (base) architecture with random weights, wav2vec 2.0 (base) pre-trained with self supervised learning on 100K hours from Voxpopuli (Wang, 2021) (‘wav2vec2-base-100k-voxpathuli’ from huggingface), on 10K hours from Voxpopuli (‘wav2vec2-base-10k-voxpathuli’), on 53K hours of english (‘wav2vec2-base’), two models pre-trained on the same multilingual corpus of 436K hours, with 300M (‘wav2vec2-xls-r-300m’) and 1B parameters (‘wav2vec2-xls-r-1b’), respectively, and our model trained on 600 hours of english speech (in blue). +/- refers to standard errors of the mean across subjects.

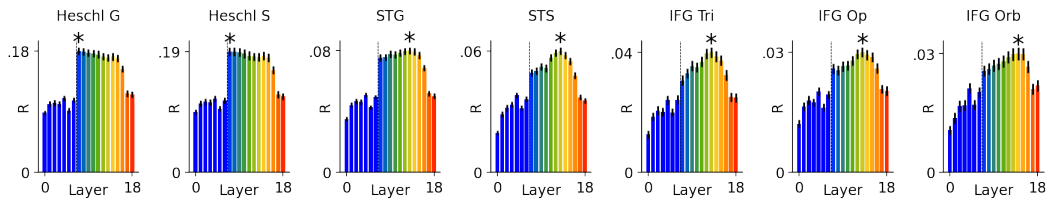


Figure S4: **Brain scores for each layer of wav2vec 2.0** Same as figure 3B, but for different regions of the brain. Brain scores are averaged across all voxels in each regions.