



HAL
open science

The Emergence of Metal Use in Greek Eastern Macedonia During the Neolithic Period (Late 6th–5th Millennia BC)

Dimitra Malamidou, Zoï Tsirtsoni, Markos Vaxevanopoulos

► **To cite this version:**

Dimitra Malamidou, Zoï Tsirtsoni, Markos Vaxevanopoulos. The Emergence of Metal Use in Greek Eastern Macedonia During the Neolithic Period (Late 6th–5th Millennia BC). *Documenta Praehistorica*, 2022, 49, pp.2-21. 10.4312/dp.49.6 . hal-03805526

HAL Id: hal-03805526

<https://hal.science/hal-03805526v1>

Submitted on 5 Jan 2023

HAL is a multi-disciplinary open access archive for the deposit and dissemination of scientific research documents, whether they are published or not. The documents may come from teaching and research institutions in France or abroad, or from public or private research centers.

L'archive ouverte pluridisciplinaire **HAL**, est destinée au dépôt et à la diffusion de documents scientifiques de niveau recherche, publiés ou non, émanant des établissements d'enseignement et de recherche français ou étrangers, des laboratoires publics ou privés.

The emergence of metal use in Greek Eastern Macedonia during the Neolithic period (late 6th–5th millennia BC)

Dimitra Malamidou¹, Zoï Tsirtsoni², and Markos Vaxevanopoulos³

¹ Ephorate of Antiquities of Serres, Serres, GR; dmalamidou@culture.gr

² CNRS, UMR 7041 Archéologies et Sciences de l'Antiquité, Nanterre, FR; zoi.tsirtsoni@cnrs.fr

³ École Normale Supérieure de Lyon, CNRS, and Université de Lyon, FR; vaxevanopoulos@gmail.com

ABSTRACT – *Copper, gold, and silver artefacts, together with evidence of metallurgical activities, have been retrieved from Late Neolithic strata in several settlements in Greek Eastern Macedonia. Recent excavations at Dikili Tash revealed that gold was further used in paints for the decoration of pottery. It appears that the area's inhabitants had a great familiarity with different metals and the distinct stages of the production-elaboration processes, including those interfering with other chaînes opératoires. Considering also the results from geological research, we propose a reflection on the socio-economic role of metal production and consumption for these societies, in their broader Balkan context.*

KEY WORDS – *metalworking; Eastern Macedonia; Greece; Late Neolithic*

Začetek uporabe kovin v grški vzhodni Makedoniji v obdobju neolitika (pozno 6.–5. tisočletje pr. n. št.)

IZVLEČEK – *V več naseljih v grški vzhodni Makedoniji so bili v pozno neolitskih plasteh skupaj z dokazi o metalurških dejavnostih odkriti bakreni, zlati in srebrni artefakti. Nedavna izkopavanja v Dikili Tashu so pokazala, da se je zlato uporabljalo v pripravi barv za okraševanje keramike. Zdi se, da so prebivalci tega območja dobro poznali različne kovine in faze procesov priprave in izdelave, tudi tiste v drugih operacijskih sekvencah. Ob upoštevanju rezultatov geoloških raziskav, predlagamo razmislek o družbeno-ekonomski vlogi proizvodnje in uporabi kovin v širšem balkanskem kontekstu.*

KLJUČNE BESEDE – *obdelava kovin; vzhodna Makedonija; Grčija; pozni neolitik*

Introduction

Northern Greece has been diachronically associated with the exploitation of its mineral wealth. Greek Eastern Macedonia in particular, *i.e.* the area between the Strymon and Nestos river valleys including the nearby Thasos island (Fig. 1), is known for its numerous polymetallic resources, which have been intensively exploited from Antiquity until modern times, with gold, silver, copper, lead and iron being the main metals extracted. Although we still

lack direct evidence about their exploitation in prehistoric and protohistoric times (with the remarkable exception of the Palaeolithic ochre mine at Tzines, Thasos, around 20 000 years ago; *Koukouli-Chryssanthaki, Weisgerber 1999*), we have good reasons to believe that many of the gold, silver and copper artefacts retrieved in recent decades from a number of Neolithic, Chalcolithic and Bronze Age sites in the area were produced from local resour-

ces. Moreover, recent analytical studies in artefacts and metallurgical remains support the use of local ores on Thasos island (Bassiakos et al. 2019).

The geological setting of the area, its metallic resources

From a geotectonic point of view, Greek Eastern Macedonia belongs to the Rhodope Massif, which possesses several small- to large-scale magmatic-hydrothermal ore mineralizations (Melfos et al. 2002; Melfos, Voudouris 2017). Most of these occurrences present traces of ancient mining (Wagner, Weisgerber 1988; Koukouli-Chrysanthaki 1990; Vavelidis et al. 1995; 1996a; 1996b; Chiotis et al. 1996; Vaxevanopoulos 2017a; Vaxevanopoulos et al. 2022). Precious metal mineralizations also appear in the Serbo-Macedonian Massif at its borders with Rhodope Massif in the Strymon valley. The Strymon river is well known for its placer gold from ancient writers. Pseudo-Aristotle describes the gold nuggets found in the riversides after heavy rains in the Paeonian territory (*De Mirabilibus Auscultationibus* 45).

The Pangaeon mountain is often mentioned by ancient writers, and ores rich in gold, silver and copper were extracted in many mining areas during Antiquity (Vaxevanopoulos 2017a; 2017b). Copper rich mineralizations and metallurgical areas with copper being one of the main extracted metals, especially in Roman times, have also been recorded (Vaxevanopoulos et al. 2018). Placer gold has been identified at several spots in the surroundings of the mountain. Alluvial gold is further reported in the streams crossing the region between Pangaeon and Symvolon (Baker et al. 1992), and limonitic veins with gold occurrences have been located in Alistrati, at the feet of the Menoikion mountain (Vavelidis et al. 1995). Further north, on the Angistrion and Orvilos mountains, several gold and silver deposits have been recorded and gold-bearing veins in marble have also been exploited (Chiotis et al. 1996).

Several mineralizations rich in gold and silver have also been identified in the region of Palea Kavala, on the Lekani Mountains, which are considered as the ancient Skapti Yli described by Thucydides (Photos et al. 1989; Koukouli-Chrysanthaki 1990).

More than 150 occurrences rich in Fe, Cu, Ag and Au have been recorded, whereas underground galleries are widespread in this area and can be dated from the 6th century BC until the Ottoman period (Vavelidis et al. 1996a; 1996b).

Finally, Thasos island, which as previously mentioned offers the earliest evidence for exploitation of metallic minerals in the Aegean, also has a number of gold, silver-lead and copper deposits. Gold deposits are located mainly on the eastern coast of the island where ancient galleries have been studied (Wagner et al. 1979; 1981; Vavelidis et al. 1988a; 1988b). Ancient exploitation of silver has been studied in the Marlou-Kourlou, Koumaria and Vouves mining areas, in the opposite southwestern part of the island, with numerous underground galleries, shafts and surface extraction (Hauptmann et al. 1988; Pernicka, Wagner 1988; Pernicka et al. 1992; Wagner, Weisgerber 1988; Sanidas et al. 2018).

Brief history of archaeological research in the area

The first Neolithic settlements were established in the area (Fig. 2) in the second half of the 7th millennium BC (Lespez et al. 2013; Maniatis 2014, 207). The plains of Serres and Drama were ideal for human occupation as they offered abundant arable land and extended pastures, with sizable rivers or perennial sources of water present (Fotiadis 1985; Andreou et al. 1996). Relative proximity to the wooded slopes of the surrounding metalliferous mountains as well as to the Northern Aegean coastline must have added considerably to the subsistence/economic potential of the area.

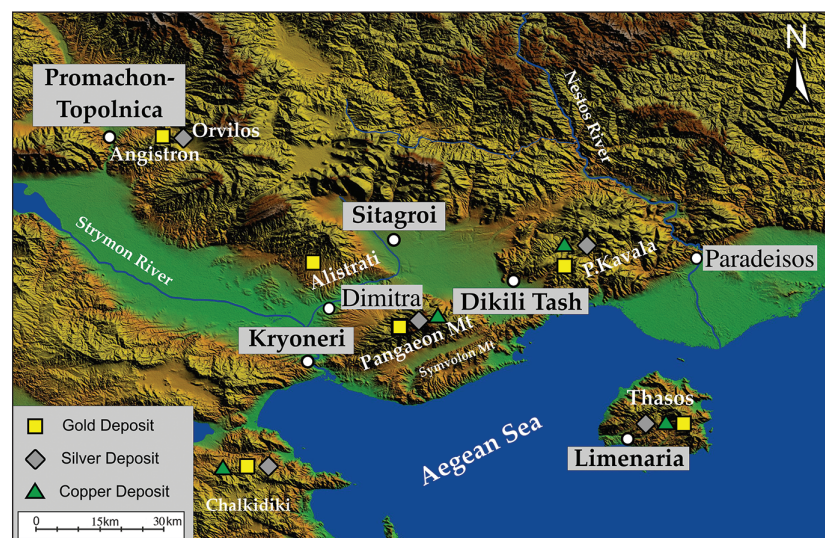


Fig. 1. Map of Greek Eastern Macedonia showing the main locations of gold, silver and copper deposits.

Although both plains comprise many important Neolithic (late 7th–mid 4th millennium BC) sites (*Grammenos, Fotiadis 1980; Grammenos 1991.120–126; Koukouli-Chryssanthaki et al. 2008*), only a few have been properly investigated. Promachon-Topolnitsa, on the west bank of Strymon on the Greek-Bulgarian border, is the only one excavated systematically to a large extent in the Serres basin (*Koukouli-Chryssanthaki et al. 2007*). Smaller scale excavations have been conducted in the cave Orpheas-Alistrati (*Kontaxi et al. 2004*) and the open-air sites at Agio Pnevma (*Tolia-Christakou, Siopi 2008*), Amphipolis-Hill 133 (*Lazaridis 1964; 1965*), Dimitra (*Grammenos 1991; 1997*) and Kryoneri (*Malamidou 2007; 2016*). In the plain of Drama, important systematic excavations have been conducted at the tell sites of Sitagroi (*Renfrew et al. 1986; Elster, Renfrew 2003*) and Dikili Tash (*Treuil 1992; Koukouli, Romiopoulou 1992; Darcque et al. 2020* with references; and www.dikili-tash.fr), whereas smaller investigations

took place at Polystylo (*Mylonas, Bakalakis 1938. 109–111*), Arkadikos-Drama (*Touloumis, Peristeri 1991; Peristeri 2002; 2004*) and in the cave of Mararas at the Angitis sources (*Trantalidou et al. 2005*). In the small valley of Pieria, between the Pangaeon and the Symvolon mountains, only the site of Akropotamos has undergone some investigation (*Mylonas 1941*). A small-scale excavation was further conducted at the site of Paradeisos, in the Nestos river valley (*Hellström 1987*). The sites of Katri-Theologos (*Koukouli-Chryssanthaki 1974; Koukouli-Chryssanthaki, Papadopoulos 2016.342–349*) and Limenaria (*Papadopoulos, Malamidou 2012*) are the only two Neolithic sites excavated so far on Thasos island. Limited remains of the final stages of the period have also been found in the neighbouring site of Agios Antonios (*Maniatis et al. 2015.810–811*).

Most of these sites have provided evidence in connection with metals or metallurgy, in the form of

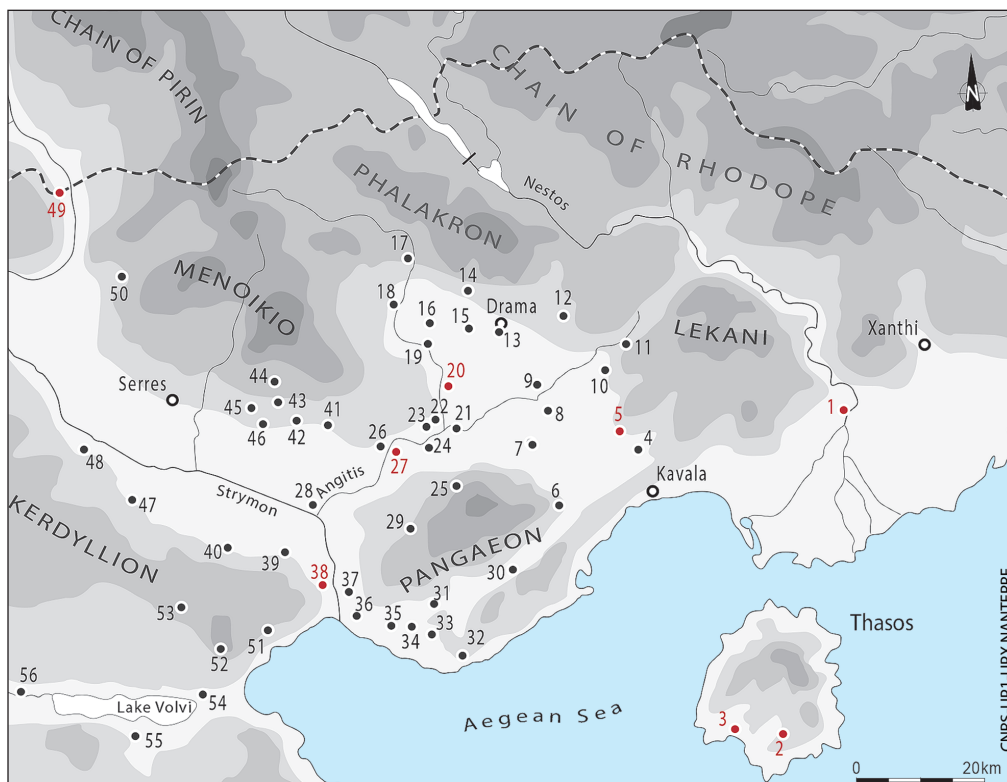


Fig. 2. Map of the area with the main Neolithic and Copper Age sites: 1 Paradeisos, 2 Katri, 3 Limenaria, 4 Polystylo, 5 Dikili Tash, 6 Eleftheroupoli, 7 Kalamonas, 8 Kalambaki, 9 Doxato, 10 Kefalari, 11 Adriani, 12 Kallifytos, 13 Arkadikos-Drama, 14 Xeropotamos, 15 Mylopotamos, 16 Petroussa, 17 Maaras-Angitis Sources, 18 Kali Vrysi, 19 Megalokambos, 20 Sitagroi, 21 Mavrolefski, 22 Symvoli, 23 Orpheas-Alistrati Cave, 24 Angista R.S.-Paliokostra, 25 Nea Bafra, 26 Airi Bairi, 27 Dimitra, 28 Fidokoryfi, 29 Mikro Souli, 30 Moustheni, 31 Podochori, 32 Loutra Eleftheron, 33 Akropotamos, 34 Kokkinochori, 35 Galepsos, 36 Ofrynio, 37 Amphipolis-Hill 133, 38 Kryoneri, 39 Kastanochori, 40 Zervochori, 41 Tholos, 42 Toumba, 43 Pentapoli, 44 Agio Pnevma, 45 Fakistra Chryssou, 46 Chryssou R.S., 47 Vergi, 48 Strymoniko, 49 Promachon-Topolnitsa, 50 Katarraktes-Sidirokastro, 51 Asprovalta-Agia Lydia, 52 Asprovalta-Platoma, 53 Arethoussa, 54 Mikri Volvi, 55 Nea Apollonia, 56 Profitis. Sites no. 51 to 56 belong administratively to the region of central Macedonia. Red dots indicate sites with evidence of metal objects and/or metallurgy.

nished objects, metal-processing installations, instruments or by-products. Part of the evidence relates with later occupation layers (Early or Late Bronze Age), frequently present at the same sites, but much of it comes from secure stratified Late Neolithic deposits and even, exceptionally, from in situ contexts (Aslanis, Tzahili 1990). Archaeometric examination of the related finds has produced valuable information on the technology of early copper, gold and silver exploitation in the area (Mirtsou et al. 1997; Koukouli-Chrysanthaki, Bassiakos 2002; Renfrew, Slater 2003; Koukouli-Chrysanthaki, Papadopoulos 2009.2; Papadopoulos 2008.67; Bassiakos 2012; Nerantzis, Papadopoulos 2013; Bassiakos et al. 2019).

Aim of the paper

Our aim is to go through this available disparate information in order to produce a comprehensive synthesis of our present knowledge on metal production and use in Greek Eastern Macedonia during the late 6th and 5th millennia BC, which is an important formative period not only here but across the entire Balkan peninsula (Pernicka 1993; Mazanova 2004; Jovanović 2009; Šljivar 2006; Hansen 2013; Kunze, Pernicka 2020a; Radivojević, Roberts 2021) and the Aegean (Zachos 1996a; Papadatos et al. 2004; Bassiakos, Catapotis 2006; Kakavogianni et al. 2008; Zachos 2010), as well as in Anatolia and the Near East (Efe 2002; Maddin et al. 1999; Özdoğan, Parzinger 2000; Rothenberg, Merkel 1998; Thornton 2001; Yalçın 2000; Yener 2000). More recent and still unpublished data are also included, mainly from the recent works at the tell settlement of Dikili Tash. We focus on technological information about the *chaîne opératoire* of the different metals, from the acquisition of ores and minerals from local sources and extractive metallurgy through smelting, to the production of finished objects. We combine material and earth sciences with well-established archaeological facts from individual sites, thus hoping to identify patterns of human behaviour in connection with other activities (e.g., other *chaînes opératoires*), in order to better understand the functioning of Neolithic metallurgy and its social background (cf. Storberg 2002.469; Ottaway, Roberts 2008; Bartelheim et al. 2015). By privileging well-dated and secure excavation contexts we try to gather pertinent evidence about metal resource exploitation and consumer choices, taking into consideration the overall practices of local populations, as well as possible networks of contacts and exchange at various geographical scales during the aforementioned period.

Data presentation

Copper

Promachon-Topolnitsa

Copper artefacts and the remains of copper-processing were found in levels of phase Promachon III in the Greek sector, corresponding roughly to the first half of the 5th millennium BC. Excavations yielded several malachite beads (Koukouli-Chrysanthaki et al. 2007.51, Fig. 8), one copper pendant, copper fragments and slags. One heavily burned clay crucible containing traces of copper smelting was found at the bottom of a small pit (*ibid.* 48–51, Fig. 7.1, 2, 4). The surrounding area also revealed traces of copper on the floor. In trench B, a series of hollows was discovered in the floor with successive layers of burnt clay in the interior (Fig. 3), which offered clear evidence for copper extraction. These features resemble similar constructions at Dikili Tash (see below). According to preliminary analyses (optical microscope, XRF and SEM), a special feature of copper production at Promachon-Topolnitsa is the use of a secondary copper ore (carbonate) of high pureness, consisting solely of malachite with >95% CuO. Such a pure copper ore, with no alumina-calcium-silica and iron admixtures, allows the production of copper at temperatures lower than 1000°C without slag being produced (Koukouli-Chrysanthaki, Bassiakos 2002; Bassiakos et al. 2019). Although relevant analysis of the aforementioned pure copper ores is still ongoing, it is clear that the metallurgical activity in Promachon-Topolnitsa is closely related to technological traditions of copper production in the Balkan hinterland (Pernicka et al. 1997; Gale et al. 2003; Borić 2009; Radivojević et al. 2010; Radivojević, Rehren 2016; Rehren et al. 2020; Radivojević, Roberts 2021).

Dimitra

Metal finds from Dimitra are proportionally numerous (Grammenos 1997.Pl. II) as all the soil from the two trenches investigated was sieved. Neolithic strata yielded 38 copper objects – 21 beads, one fish-hook (*ibid.* 51, Pl. 36.2), five parts of pins or wires, and 11 undefined fragments. The majority come from 5th millennium BC layers, but some certainly date to the second half of the 6th millennium (*i.e.* five beads from ‘Middle Neolithic’ layers in trench II). Fourteen copper artefacts have been analysed with several methods, including emission spectroscopy for the estimation of their qualitative composition, proton induced x-ray emission (PIXE) to determine their quantitative elemental composition, and

x-ray radiography in order to confirm the internal metallic structure of the objects (Mirtsou et al. 1997). One copper artefact was sectioned for metallographic examination to obtain information about the manufacturing procedure. All samples had different compositions, with arsenic, zinc and bismuth present in various proportions. Copper beads were produced by cold hammering and annealing at about 600°C.

Apart from the metal objects, small amounts of polymetallic ore (rich in copper, iron, lead) have been collected from both trenches, but they are not yet analysed. No melting or smelting installations have been identified in the excavated areas. Consequently, there is still no direct evidence for on-site metallurgical activity, and we are not aware which metal source was exploited.

Kryoneri

Three copper pins/awls, two fragments of copper rings and some ore fragments were found in Late Neolithic deposits (mid-5th millennium BC), from both domestic context and waste pits (Malamidou 1997.518, Fig. 11; 2007.302, Fig. 8; 2016.312, Fig. 26). Preliminary examination of two pins under an electron-scanning microscope (SEM) by Yannis Maniatis at the Laboratory of Archaeometry of the NCSR Demokritos showed that they are made of pure copper. No further analysis has yet been conducted.

Sitagroi

The finds of phases Sitagroi II and III (late 6th and 5th millennia BC) include a copper pin, an awl, five beads and a few copper fragments or lumps (Renfrew, Slater 2003.305, 319–320, Fig. 8.1.a-d,f-g). In addition, a marked concentration of sherds with copper incrustation was detected in square MM layer 20 and adjacent levels (phase Sitagroi III). Four sherds with copper remains from square MM, layers 61 and 60, probably belong to an earlier context. Given the nature of the ceramics (coarse, with rough surfaces and curved walls) and the distribution of the remains (mostly inside and on the broken edges), they are interpreted as parts of crucibles or as sherds used to remove or to hold back dross during metal pouring (Fig. 4) (Renfrew, Slater 2003.303, 312, Fig. 8.4). One of the best-preserved is a fragment of an oval-shaped crucible (dimensions c. 9x6cm, wall thickness up to 1.7cm) (*ibid.* 306, Fig. 8.4.I, Pl. 8.10). No moulds were recognized.

Sixty-eight samples from Neolithic phases, either metallic or non-metallic but presumably related to metal technology, were sectioned and analysed on a



Fig. 3. *Promachon-Topolnitsa, series of hollows in trench B with evidence of use for copper extraction* (© Ephorate of Antiquities of Serres).

Microscan V Microprobe Analyser (*ibid.* 301–302). It should be kept in mind that these analyses were conducted in the late 1960s using a first-generation microprobe analyser that had limited levels of precision and sensitivity. The five non-metallic samples from the Sitagroi I levels provided no evidence of metalworking. Four out of the 12 analysed samples from the phase II levels were made of copper with no intentional alloying, while the other eight were non-metallic, showing no evidence of on-site smelting. By contrast, phase III finds (11 copper objects and 40 sherds with copper deposits) show clear evidence of smelting and casting. The very low concentrations of impurities in some samples may indicate that smaller pieces of native copper were melted together in order to form an object, whereas objects with higher impurity levels may well be the product of smelting from ores. Other specimens show evidence of cold working and annealing. Three objects contained tin, but not in percentages as high as those normally associated with deliberate alloying, and two contained lead in small amounts.

The question arises of where the activities of melting or smelting, casting, cold working and annealing took place. Five separate contexts yielded sherds with adherent copper deposit. The richest one is, as already mentioned, square MM level 20, which is a rich fill including pottery, figurine fragments, bone, clay and stone objects, as well as two finished copper objects (the roll-headed pin and the awl or fish-hook). All fragments with copper deposit were concentrated around an installation, consisting of a ba-

ked clay surface surrounded on three sides by a packed clay wall and open to the east (Renfrew et al. 1986.212, Fig. 8.19, Pl. XXXVII. 2). This may be interpreted as a pyrotechnological installation. Perhaps crucible melting was carried out in such places, although the smelting process was probably undertaken at or near the mining areas from which the copper ore was obtained.

Dikili Tash

A relatively small number of copper artefacts were found during the first excavation program, conducted by Jean Deshayes and Dimitrios Theocharis between 1961 and 1975. A small copper bead (Séféria-dès 1992.115, Pl. 146.a) was the only artefact retrieved from a phase I context (end of 6th millennium BC), roughly contemporary with Sitagroi II. The levels of Dikili Tash phase II (contemporary with Sitagroi III) in the sectors excavated by the French team yielded nine copper awls or pins (*ibid.* 115–116, Pl. 146.b, 199.e,f), but no ornaments. Two unstratified copper roll-headed pins from the same sectors might also come from levels of this period (*ibid.* 118–119, Pl. 147.b,c; 200.b).

Five pins from phase II have been analysed by atomic absorption spectroscopy (AAS). They all contain minor percentages of lead, iron, silver, and nickel, and in two cases tin (*ibid.* 114, Tab. 12). All these elements can be present in small percentages in copper oxides such as malachite.

A few occurrences of copper oxides and copper fragments are reported in the archives of Jean Deshayes in contexts of both phase I (square X29-niv. 13) and II (squares W29-niv. 9 and W30-sol 6). Interestingly, the last of these contexts shows heavy traces of combustion around a clay-plastered pit, which has been interpreted as a possible hearth (Treuil 1992. 23). A heavily burnt sherd with copper traces is also recorded in phase II (square X30-niv. 7).

Sectors I and II, excavated by Theocharis in 1961 and 1967, respectively, have yielded some 10 copper artefacts and a sherd with copper incrustation, most probably a crucible fragment, and these are all unpublished. At least two of them (one pin and a flat sheet of copper) found in sector II/1967 could date from the Late Neolithic.

The second and third excavation programs (1986–2016) added further copper objects to the site's inventory. Parts of four pins or awls were retrieved from late-5th millennium contexts in sector 6 (which

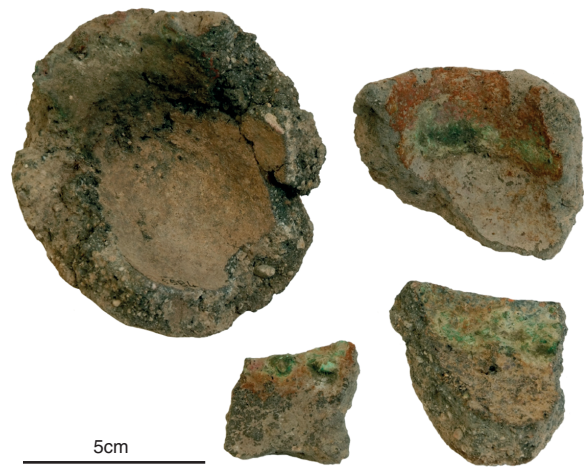


Fig. 4. Sitagroi, fragments of crucibles (© Ephorate of Antiquities of Drama).

is an extension of Theocharis' sector II), although none in an entirely secure position. A fifth one was stuck on the outer surface of a sherd found in a slightly earlier level in sector 5 (level V/East/1, c. 4700–4500 BC). A copper bead (Fig. 5) was found near a hearth or oven in House 2, again in sector 6.

The best-contextualized copper artefacts are however two other beads and an awl (Fig. 6) found in the neighbouring House 1, whose destruction has been dated to the years 4340–4260 cal BC. They come from two distinct groups of ornaments and raw materials found on the house floor, less than 2m apart from each other. The first group, from which the beads come, contained some 270 items in total, mainly clay, shell and stone beads and a few pieces of unworked shell, whereas the second group containing the awl comprised no less than 1000 beads of stone, a dozen of spondylus bracelets, hundreds of perforated plaques and pieces of boar tusks, graphite cones, and also a few gold ornaments (Darcque et al. 2012–2013.753–758; 2014.605–608; 2015; 2020.256–265, Fig. 6–39 to 6–48, 274–275, Fig. 6–64). One of the two copper beads (actually a sheet of copper folded in the shape of a cylinder) was caught in the hole of a stone bead. Analysis with a portable XRF conducted in 2013 by Sariel Shalev (Haifa University) confirmed that both beads were made from pure copper (the awl was not analysed).

A few more copper artefacts were retrieved from sector 2 at the southern periphery of the tell, but their chronology is not safe as they all come from colluvia with later components (Darcque et al. 2020. 86–87, Fig. 3–52.b-d). The only exception is a small copper bead, which comes from a colluvium securely dated to the 5th millennium BC.

From the same layer of sector 2 also comes a fragmented clay mould (Fig. 7), the first discovered at Dikili Tash (*ibid.* 75–76, Fig. 3–39.e). It is made from well-refined clay and has fine incisions on all sides. The shape of the cavity on its upper surface suggests that it was probably used for the casting of chisels – a type of object common in assemblages of this period in both the Aegean and Balkans (*Chernykh 1978.Pls. 10, 12; Zachos 2010.86, Fig. 6–6*). XRF-analysis detected copper traces in the cavity's walls.

No crucible fragments have been found so far. One vitrified sherd with a copper deposit on its internal surface was found in the area to the southwest of House 3 in sector 6, but very near the surface.

The existence of melting or smelting installations in Dikili Tash is debated. A series of small cavities whose inner surfaces were covered with successive layers of burned clay plaster, alternating with ash layers and bearing traces of intense fire, have been interpreted as possible metallurgical structures. All of them were found in layers of phase Dikili Tash I (three in level XIV of square W30, one in level XIII of square W30 and two in level 11 of square X30) (*Séfériadès 1983.647; Treuil 1992.21–23, Pls. 13.B, 15, 32.A,B; Séfériadès 1992.115*). However, unlike Promachon-Topolnitsa (see above), no trace of slags or other elements related to metallurgical activity have been detected within or nearby these structures.

Paradeisos

The Late Neolithic levels at Paradeisos yielded two copper needles, slightly bent, 7 and 7.2cm in length respectively (Fig. 8) (*Hellström 1987.85, Fig. 48.18, 19*). Some other shapeless copper fragments were collected. No other indications of metallurgical activity were recorded.

Kastri Theologos-Thasos

Two copper pins were retrieved from Late Neolithic levels at Kastri (mid-5th millennium BC). Analysis



Fig. 6. *Dikili Tash, sector 6, copper beads (a-b) and copper awl (c) from House 1* (© Dikili Tash Project-EFA).



Fig. 5. *Dikili Tash, sector 6, copper bead found next to a hearth or oven in House 2* (© Dikili Tash Project-EFA).

has demonstrated the existence of arsenical copper, probably of Thasian origin, although this could not be safely attributed to any of the known extraction sites on the island (*Koukouli 1992.677*).

Limenaria-Thasos

Excavations of Neolithic strata at Limenaria brought to light a significant number of finds associated with copper related metallurgical activities. The recovered evidence includes copper artefacts, slags, and numerous fragments of hematite/limonite lumps, some containing secondary cupriferous minerals, mainly malachite and azurite. A malachite bead was recovered from an upper layer in the Konstantinidis plot, dating from the end of the 6th or the beginning of the 5th millennium BC (Fig. 9) (*Papadopoulos 2008.64, Fig. 2, p. 67; Papadopoulos, Malamidou 2012.41*). It is a pierced piece of malachite, made simply by percussion and polishing.

Twenty samples from slags and/or ore lumps, coming from various layers of the excavated areas, were studied with optical microscopy (OM), scanning electron microscopy (SEM-EDX), x-ray diffraction spectroscopy (XRD), and neutron activation analysis (NAA) (*Bassiakos 2012; Bassiakos et al. 2019*). Analyses showed that copper slag samples derive from reduction smelting to obtain copper. A notable heterogeneity in their texture, either micro-morphological or chemical, seems to have resulted from inefficient reducing conditions, suggesting a certain insuff-



Fig. 7. Dikili Tash, sector 2, fragmented clay mould with incised decoration on all sides (© Dikili Tash Project-EFA).

ficient control of furnace operation with some loss in the gaining of metallic copper. Despite that, these slags offer solid proof of a successful metallurgical process for efficient production of metallic copper. Until recently a similar heterogeneity in smelting slags from copper extraction was only noted at Aegean sites dated to the late 4th and 3rd millennia BC, such as Kephala-Petras, Crete (*Catapotis et al. 2011; Papadatos et al. 2007*) and Kythnos, Cyclades (*Bassiakos, Philaniotou 2007*), but this is now also reported from the late 5th millennium BC site of Akladi Cheiri in South-East Bulgaria (*Rehren et al. 2020*).

One sample represents a case of slagged lining deriving from the furnace's internal surface. Slag fragments like this are common within or very close to the smelting furnace from numerous other sites of early copper pyrometallurgy in the Aegean (*Georgakopoulou 2005*). Therefore, locating finds of this kind at Limenaria would suggest that the main smelting site, from which the slags under study derive, was not far from the excavated sectors. The numerous slagged ceramic sherds found in a pit at Akladi Cheiri have also been attributed to the lining of a nearby smelting hearth (*Rehren et al. 2020; Radivojević, Roberts 2021.221*).

As for the numerous lumps or fragments of iron ores from the same excavated layers, they most probably derive from local sources and could be explained as waste products of a final enrichment stage of a cupriferos iron ore (*cf. Bassiakos, Catapotis 2006*),



Fig. 8. Paradeisos, copper needles (© Ephorate of Antiquities of Kavala).

although they could also have been waste products of a different enrichment process for the extraction of a red or yellow pigment.

Taken altogether, the analytical results strongly suggest that the metalworkers exclusively utilized the local mineral resources for copper production. They demonstrated significant skill and succeeded in extracting metallic copper from the locally available polymetallic (and poor in cupriferos secondary ores) mineral resources.

metallic copper from the locally available polymetallic (and poor in cupriferos secondary ores) mineral resources.

Silver – lead

Limenaria

An unexpectedly early metal find, a small fragment of a silver pin, was discovered in a late Middle/early Late Neolithic horizon (second half of the 6th millennium BC) at the Lioudas plot (Fig. 10) (*Papadopoulos, Malamidou 1997.836–837; Papadopoulos 2008.65, Fig. 3*). Compositional data and microstructural examination have shown that the pin was shaped by hammering of a lump of silver. Its internal micro morphology reveals that the silver is heterogeneous and consists of pure metal in which semi-translucent, minute pieces of slag are embedded. It is therefore presumed that the silver used to make the pin is not native, but the product of an extraction from argentiferous lead ore (*Bassiakos 2012.210–211*).

No silver finds are recorded from the 5th millennium, which is altogether less well documented on the site. However, there is firm evidence for silver extraction practice from a context of the early 4th millennium BC ('Final Neolithic'). Three litharge fragments coming from Markoulis plot belong to a piece of the 'shallow bowl' type, which derives from lead-silver extraction process (Fig. 11) (*Papadopoulos 2008.66, Fig. 5.a-b, 68–69; Papadopoulos, Malamidou 2008.431*). Compositional analysis and microstructural examination of these fragments suggest extraction and treatment of local Pb/Zn/Ag ores



Fig. 9. Limenaria, malachite bead (© Ephorate of Antiquities of Kavala).

for the production of silver artefacts (*Bassiakos 2012.208–210; Bassiakos et al. 2019*). The circular, discoid morphology and the chemical composition of this type of litharge fragments do not relate to the platy or tubular litharge deriving from the well-known cupellation process of historic times (*Bassiakos et al. 2013*). The process of early silver production that leaves behind as a by-product a shallow bowl of litharge has not been fully clarified yet, but similar examples are known from a number of sites from the end of the Final Neolithic/Early Bronze Age I (second half of the 4th millennium BC) in Mesogeia, Attica (*Kakavogianni et al. 2006.79; 2008; 2016.446–447, Fig. 15*), or neighbouring Eastern Mediterranean regions (e.g., East Anatolia – *Hess et al. 1998*; Syria – *Pernicka et al. 1998*). The dating of the litharge from Limenaria is supported by both the relative and absolute chronology (calibrated date between 3977 and 3789 BC), which makes it one of the earliest, if not the earliest piece, of firm evidence for the process of silver production in the Aegean.

Gold

Dimitra

Three golden artefacts were collected during the excavation in Dimitra, all from Late Neolithic contexts, more or less securely dated to the advanced 5th millennium BC. Two of them are beads: one collected from the upper part of the Neolithic deposits in trench I, disturbed by the LBA wall (*Grammenos 1997.49, Pl. 35.8*), the other from a lower level in the same trench (*ibid. Pl. II*). The third artefact, also from trench I, is described as a fishhook (*Fig. 12 (ibid. 51, Pl. 36.1)*). The two beads have been examined with different methods (*Mirtsou et al. 1997*; see above). Analysis showed that they were made from gold (both contained 10% silver and 0.05% copper), which was cold hammered and annealed to produce ring-pearls with a wall thickness of 0.4mm and an inner diameter of 2 and 5mm (*ibid. 93*). The polished but unetched structure of both gold samples exhibited a number of quartz inclusions, so the artefacts were most probably made from native gold without melting. The etching with *aqua regia* solution revealed a single-phase structure with few twin-

ned crystals, indicating hammering followed by a reheating process.

Sitagroi

One gold bead was retrieved from the sieving of sediments in a small sounding (ZB) adjacent to the main stratigraphic sounding ZA, and it is assigned to phase III, i.e. the 5th millennium BC (*Renfrew, Slater 2003.319–320, Fig. 8.1.e, Pl. 8.4*). It belongs to the narrow cylindrical type. Examination under a microscope showed that the bead was made by beating a flat piece of metal around an inner core (which was not preserved). The ends were cut diagonally and had tooling marks near their edges, indicating that an attempt was made to weld them together. No further analysis has been conducted.

Dikili Tash

A small gold bead was found in the sector excavated by Theocharis in 1961 on the east slope of the tell (sector I), but was not included in the relevant preliminary report (*Koukouli, Rhomiopoulou 1992*). Comparison with artefacts from other sites and from the more recent excavations at Dikili Tash itself allows its dating to the late 5th millennium BC (*Tsirtsoni 2018.1276–1279, Fig. 2*). The piece of gold M206 kept at the Philippi Museum is probably the one mentioned by Michel L. Sfériadès (*1992. 113*) as coming from a coeval context from the excavations by Deshayes.

During the 2012–2013 excavations at Dikili Tash, four new gold objects were recovered, but this time from a perfectly secure context: a rich group of finished and half-finished ornaments, tools and raw materials found in the northern part of House 1, in sector 6 (see description and chronology above). Two of the gold ornaments, conventionally described as cylindrical beads, were flat strips of gold rolled around smaller beads from stone, while the third, which was smaller in size, was made with the same technique but contained no beads from a different material. The fourth was a twisted band forming a ring at one end (*Fig. 13*). The last type had not been attested yet in Northern Greece, but is known from a number of sites (mostly cemeteries) in the Balkans (e.g., at Varna, *Le premier or de l'humanité* 118–

119 (grave 4), 136–137 (grave 41), 149 (grave 97); see also *Tsirtsoni 2018.1280*). An SEM Examination by Michael Vavelidis (Department of Geology, Aristotle University of Thessaloniki) showed that all four are



Fig. 10. Limenaria, silver pin (© Ephorate of Antiquities of Kavala).

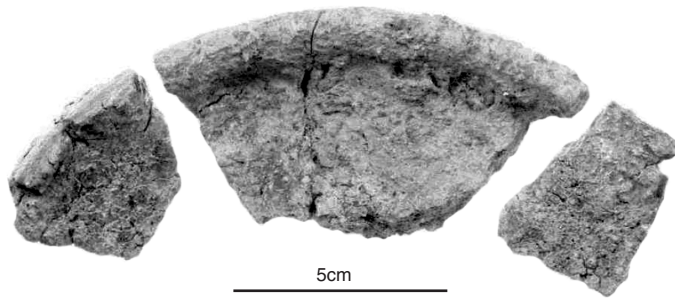


Fig. 11. *Limenaria*, litharge fragments of the ‘shallow bowl’ type (© Ephorate of Antiquities of Kavala).

made of gold with a low percentage of silver (4–9%). This points to native gold as a raw material. The surfaces show traces of hammering and rubbing (Fig. 14).

Although no direct connection has been made yet between the traces observed on the gold ornaments, or the other associated artefacts, and the tools found near them (one copper and one bone awl, one stone hammer/polisher, and several chipped-stone tools), it is clear that we see here an on-going process of manufacturing of jewels and decorative elements. Other craft activities were taking place in House 1 (e.g., decorating of pottery) together with more – and less – ordinary activities, such as storage, cooking and wine-making (Darcque et al. 2012–2013. 752–758; 2014.607–610; 2020.298–303).

The same house yielded another unexpected find connected with gold: a complete clay vessel, a bowl decorated with brown-on-cream painted decoration, which proved to display gold ‘stains’ at several spots of its exterior surface and in the inner part of the rim (Tsirtsoni 2018. 1313, Fig. 8; originally illustrated in Darcque et al. 2015.408, Fig. 7; Tsirtsoni 2016.285, Fig. 14) (Fig. 15). The bowl was standing on the floor a few meters to the south of the group of ornaments discussed above, and at short distance from the other group of ornaments that contained the copped beads (see above). The gold material seems to have been added after the original firing of the vessel, and indeed one wonders if this was done intentionally, as part of a restoration, or accidental-



Fig. 12. *Dimitra*, gold ‘fishhook’ (© Ephorate of Antiquities of Serres).

ly, when someone working with gold paint on another object would have touched the vessel with his/her gold-stained fingers or tools.

However, intentional gold-painting on pottery is also attested at Dikili Tash. Evidence comes from a unique sherd found in sector 2, at the southern periphery of the tell: it is a fragment from the rim and handle of a small amphora, decorated with parallel oblique lines (Fig. 16). Its stratigraphical position is not secure, but according to its typological characteristics (shape, fabric, firing, surface finishing and decorative motifs) it can be dated with certainty to the years between 4800–4200 BC, and most probably after 4500 BC. This vessel type is indeed very common for this period both at Dikili Tash and the wider area, with decoration typically executed with graphite paint. Here, graphite has been replaced by gold, applied before firing (Tsirtsoni 2018. 1285–1288). Examples of such substitution of an ordinary colouring material (graphite) for a less ordinary, and presumably precious one (gold) are known so far with certainty only from the Varna necropolis (*Le premier or de l’humanité* 118–125: two vessels from grave 4). Two sherds from the site of Bubanj in Serbia (Stojić, Jocić 2006.154–155, Pl. 41.b; Bu-



Fig. 13. *Dikili Tash*, gold ornament from House 1 (© Dikili Tash Project-EFA).

latović et al. 2020.46, 53, Pl. 6/1) and two more from Krivodol and Chirpan in Bulgaria (personal communication of our colleagues Nadezhda Todorova and Petur Leshtakov) could be the only other candidates, if their dating was confirmed.

Discussion

Metal objects, albeit in small numbers, are attested in most sites investigated to some extent (Tab. 1). They are all either small tools (awls, pins, fishhooks, wires) or ornaments (beads, twisted bands, pen-

dants), and no objects with any substantial thickness of metal (like flat axes, shaft-hole axes or axe-adzes) have been found. Few of the metal finds came from a recognisable in situ context of use, with the exception of Dikili Tash, where a copper awl was found in House 1, sector 6, together with golden beads and a group of other finished and semi-finished elements of jewellery.

Although a complete metallurgical chain of production (*chaîne opératoire*), beginning with the raw material and ending with the finished product, was not successfully proven for any of the excavated sites, extraction from ores was attested for copper and silver. Metallurgical installations are not well documented in general either in the Balkans or Aegean. The recovery of a significant number of sherds or crucible fragments and associated copper deposits from phase III levels at Sitagroi is of considerable interest. They offer evidence of, at the least, copper melting on the site. Smelting in small shallow pit-shaped hearths opened in the clay-rich ground is probably also attested at Dikili Tash.

Copper production at Promachon-Topolnitsa is among the earliest in the Balkans, dating from the end of the 6th and the early 5th millennium BC, and is documented both by stratigraphy and absolute dating. There, the production is based on simple smelting of very pure malachite, producing no slag

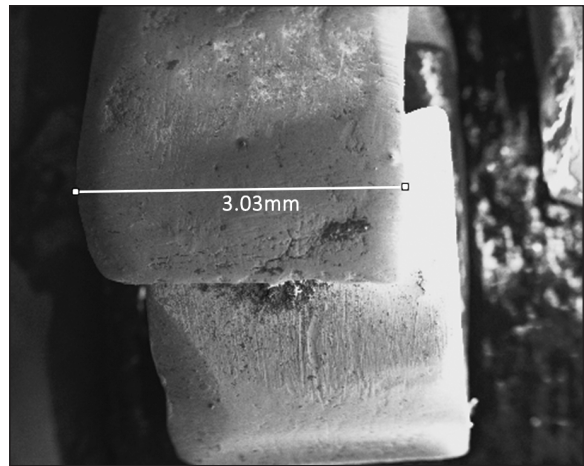


Fig. 14. Dikili Tash, SEM microphotograph of a gold bead from House 1 (© M. Vavelidis-Dikili Tash Project).

(*Koukouli, Bassiakos 2002*), a method consistent with what we know of the main metal-producing techniques of the Balkan hinterland, described as ‘slagless’ or ‘nearly slagless’ (*Pernicka et al. 1997; Radivojević, Rehren 2016; Rehren et al. 2020; Radivojević, Roberts 2021*).

The finds from Limenaria provide a more diversified picture. Items like the malachite bead show that the properties of the ores, which were collected from sources not far from the settlement, were already understood with regard to their use as pigments and

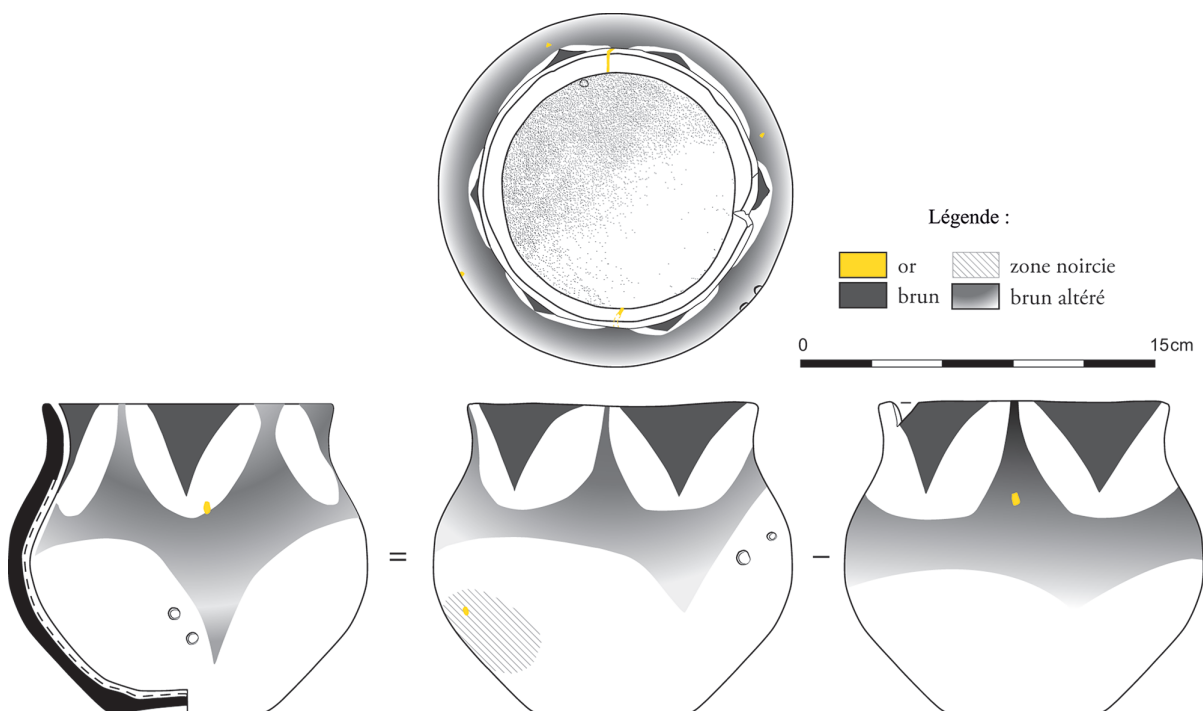


Fig. 15. Dikili Tash, brown-on-cream painted vessel from House 1 with gold ‘stains’ (drawing A. Ilioglou) (© Dikili Tash Project).

raw materials for other purposes. Given the long tradition among prehistoric communities on Thasos in the exploration of local minerals, it is not surprising that as early as the 5th millennium BC the inhabitants of Limenaria were trying to extract copper from the Thasian polymetallic ores (Nerantzis, Papadopoulos 2013; Bassiakos et al. 2019). The gaining of copper from such polymetallic raw materials required, apart from enriching the ore with copper minerals, a considerable level of skills and experience, which recalls pyro-metallurgical practices that are also attested later in the Aegean (Bassiakos, Catapotis 2006). On the basis of this evidence, Thasos seemed to be part of a technological tradition with ties to the Aegean and Asia Minor, rather than to the Balkans (Bassiakos et al. 2019.2754). The recent discovery of similar remains at the late 5th millennium BC Akladi Cheiri, in South-East Bulgaria (Rehren et al. 2020), invites us to reconsider the evolution patterns of early small-scale metallurgy in the wider area.

The fact that Limenaria, Thasos, provided firm evidence for extraction of silver in the early 4th millennium, and possibly earlier, is of great interest. Silver objects are not known in the Balkans before the end of 4th millennium (Nikolova 1999.303–308; Alexandrov 2009; 2018), whereas they appear earlier and are more common in the Aegean and southern Greece (e.g., Cyclades, Attica, Dimakopoulou 1998.64–65; Zachos 2010.89; see also Tsirtsoni 2014.295). Silver is rarely found as a native mineral element. Unlike gold, it is rarely found in significant amounts in placer deposits. The principal sources of silver are the ores of copper, copper-nickel, lead, and lead-zinc. Lead and silver extraction was attested through compositional data and microstructural examination of fragments of litharge and the silver pin found at Limenaria. The availability of resources locally was an important factor for the early exploitation of silver ores by Neolithic people. Nevertheless, given the fact that Thasos is open to southern influences in many regards, sharing of Aegean technological traditions must also have played an important role.

Gold objects are found in mainland sites of Eastern Macedonia only as beads in the form of hammered sheets rolled in a cylindrical shape, while hammered sheets of other shapes and ring-shaped pendants are absent, perhaps because objects of this type are more common in tombs (e.g., Aravissos, central Macedonia, Zachos 2010.89; 1996b.167, 339–340; Thessaly, *ibid.* 167, 339). All the above have close typological



Fig. 16. Dikili Tash, fragment of a gold-painted vessel from sector 2 (© Dikili Tash Project-EFA).

similarities with the ones from southeast Europe, which were found in large quantities in tombs, mainly in the extensive cemeteries of Bulgaria.

Gold paints in Dikili Tash show that the Late Neolithic inhabitants of the site were familiar with this metal. They were using it not only as precious material for jewellery making, but also in the *chaîne opératoire* of decorating pottery, in the same way as graphite and other minerals. This fact provides evidence for close relations with the pyrotechnology traditions of the Balkans.

Evidence for the extraction of metals from mining sites is lacking at the moment. Placer gold areas and alluvial gold washeries are difficult to distinguish and locate after centuries of erosional processes. Nevertheless, bearing in mind the abundance of mineralization in the area, one can assume that some prehistoric hard rock mining locations, which survived later mining activities, must exist. Therefore, and despite difficulties, locating traces of prehistoric mining and identifying the origin of the various raw materials and their relationship to the finished objects should be targeted, and ongoing research (Vaxevanopoulos 2017a; Vaxevanopoulos et al. 2021) is engaged in this.

Conclusion

Despite the relatively modest nature of the individual metal objects retrieved from Eastern Macedonian settlements, their widespread presence and coherent picture add significant data about the development of metal production in the North Aegean and more broadly in the Balkans. The fact that they come from secure stratigraphic contexts allows their dating to be firmly established, whereas their integration in considerably long sequences such as those

Settlement	Copper Artefacts	Silver Artefacts	Gold Artefacts	Ore and Metallurgical Findings	Dating	References
Promachon-Topolnitsa	malachite beads, 1 pendant, fragments			1 crucible, hollows with remains of burnt clay, slags	First half of the 5 th mill. BC	Koukoulis-Chrysanthaki et al. 2007
Dimitra	21 beads, 1 fishhook, 5 parts of pins or wires, 11 undefined fragments		2 beads, 1 fishhook	polymetallic ore fragments	Second half of 6 th to 5 th mill. BC	Grammenos 1997; Mirtsou et al. 1997
Kryoneri	3 pins/awls, 2 fragments of rings			copper ore fragments	Mid-5 th mill. BC	Malamidou 1997; 2007; 2016
Sitagroi	1 roll-headed pin, 1 awl, five beads		1 bead	oval crucible, copper fragments of lumps, sherds with copper incrustation	Late 6 th to 5 th mill. BC	Renfrew, Slater 2003
Dikili Tash	4 beads, 10 awls or pins, 2 unstratified roll-headed pins, parts of 5 more pins or awls, 1 flat sheet		4 beads, 1 twisted band, 1 unidentified, 1 ceramic vessel with gold stains, 1 gold-painted sherd	copper oxides and copper fragments, 1 burnt sherd with copper traces, 1 sherd with copper incrustation, 1 clay mould, 1 clay-plastered pit	End of 6 th to late 5 th mill. BC	Séfériadiés 1992; Koukoulis, Rhomiopoulou 1992; Darcaque et al. 2015; 2020; Tsirtsoni 2016; 2018
Paradeisos	2 needles and fragments				Late 5 th mill. BC	Hellström 1987
Kastri Theologos (Thasos)	2 pins				Mid-5 th mill. BC	Koukoulis 1992
Limenaria (Thasos)	1 malachite bead	1 pin		20 slags and fragments of hematite/limonite lumps containing malachite and azurite, 3 litharge fragments	End of 6 th to early 4 th mill. BC	Papadopoulos, Malamidou 1997; 2008; Papadopoulos 2008; 2012; Bassiakos 2012; Bassiakos et al. 2019

Tab. 1. Summary of the evidence of metal use in Greek Eastern Macedonia during the Neolithic period.

of Sitagroi and Dikili Tash enables us to follow their evolution.

The identification of smelting activities in several sites provides documented proof of pyrometallurgical copper extraction at the turn of the 6th to 5th millennium BC, while silver was definitely extracted at Limenaria since the 4th millennium BC. Attested are both the main techniques of production of metal items: ‘cold’ bead-making using established Neolithic technologies, and ‘hot’ copper smelting using developed metallurgical skills. Indeed, there is sound evidence for copper smelting being carried out using simple holes in the ground, followed by melting and casting elsewhere in the settlement.

Metal objects have not been found in significant numbers, and most tools and ornaments were still made of stone, bone, shell, or other organic materials. So, even though they might have been significant as prestige objects, metal artefacts do not seem to have been an essential component of the local material culture during the Neolithic. According to the data presented here, metal-working was only supplementary to other more important economic activities like agriculture and pastoralism, and second to other crafts, such as pottery or bone-tool manufacture. Considering the scale and importance of metallurgy during the 5th millennium BC, metal-working should be seen more as part of a bigger techno-complex and less as a main incentive for cultural development.

Nevertheless, new research programs should address the question of the geological origin of the various minerals in use, by identifying ancient mining relics and locations (*cf. Kunze et al. 2018; Krauss et al. 2020; esp. Kunze, Pernicka 2020b*). New analytical approaches, such as the LA ICP-MS method performed on metal objects, should play a more critical role in gai-

ning additional information about the trace elements included and their relation to ore mineralization. Moreover, coherent and comparable analytical results for Late Neolithic finds could further contribute to our interpretations about the technical and social dynamics of appropriation and early use of metals in the Balkans.

ACKNOWLEDGEMENTS

The authors express their gratitude to the anonymous reviewers of the paper's first version. Their suggestions and constructive comments have considerably helped to improve both the aspect and the content of the paper. The final preparation of the photographs of all objects was carried out by Rozenn Douaud, a Research Engineer at the UMR 7041 Archéologies et Sciences de l'Antiquité, Nanterre, and for this work we thank her warmly.

∴

References

- Alexandrov S. 2009. Ukrasheniya za kosa ot zlato i srebro prez bronzovata epoha v Severna Balgariya. *Arheologija 1–2*: 7–20. (in Bulgarian)
2018. The Early and Middle Bronze Age in Bulgaria: Chronology, periodization, cultural contacts and precious metal finds. In S. Alexandrov, Y. Dimitrova, H. Popov, B. Horejs, and K. Chukalev (eds.), *Gold and Bronze: Metals, Technologies and Interregional contacts in the Eastern Balkans during the Bronze Age*. National institute of archaeology with museum. Bulgarian academy of sciences. Sofia: 85–95.
- Andreou S., Fotiadis M., and Kotsakis K. 1996. Review of Aegean Prehistory V. The Neolithic and Bronze Age of Northern Greece. *American Journal of Archaeology 100*: 537–597. <https://doi.org/10.2307/507028>
- Aslanis I., Tzahili I. 1990. Chalkolithische und Frühbronzezeitliche Metallfunde aus Nordgriechenland – Ihre Beziehung zur Balkanischen und Anatolischen Metallurgie. In B. Jovanović (ed.), *Ancient Mining and Metallurgy in Southeast Europe*. International Symposium. Archaeological Institute and Museum of Mining and Metallurgy. Belgrade/Bor: 89–93.
- Baker J. H., Arvanitides N., Eliopoulos D., and De Groot P. 1992. *Vein type mineralizations, N. Greece: Examples from Pangeon, Palea Kavala and Symvolon. Progress report to IGME and DGXII*. Thessaloniki.
- Bartelheim M., Hardenberg R., Knopf T., Scholz A., and Staecker J. 2015. 'Resource Cultures' – a concept for investigating the use of resources in different societies. In A. Danielisová, M. Fernández-Götz (eds.), *Persistent Economic Ways of Living: Production, Distribution, and Consumption in Late Prehistory and Early History*. Archaeolingua. Budapest: 39–50.
- Bassiakos Y. 2012. Proimi paragogi chalkou kai argirou sta Limenaria Thasou: Mia technologiki prosengisi. In S. Papadopoulos, D. Malamidou (eds.), *Deka Chronia Anaskafikis Erevnas ston proistoriko Oikismo Limenarion Thasou*. Praktika Imeridas, Thasos 11 Iouliou 2003. Ecole française d'Athènes. Thessaloniki: 197–225. (in Greek)
- Bassiakos Y., Catapotis M. 2006. Reconstruction of the copper smelting process at Chrysokamino based on the analysis of ore and slag samples. In P. Betancourt (ed.), *The Chrysokamino Metallurgy Workshop and its territory. Hesperia Supplements 36*: 329–353.
- Bassiakos Y., Philaniotou O. 2007. Early copper production on Kythnos: archaeological evidence, material and analytical reconstruction of metallurgical processes. In R. C. P. Doonan (ed.), *Metallurgy in the Early Bronze Age Aegean*. Oxbow Press. Oxford: 19–56.
- Bassiakos Y., Nerantzis N., and Papadopoulos S. 2019. Late Neolithic/Early Bronze Age metallurgical practices at Limenaria, Thasos: evidence for silver and copper production. *Archaeological and Anthropological Sciences 11*: 2743–2757. <https://doi.org/10.1007/s12520-018-0689-4>
- Borić D. 2009. Absolute dating of metallurgical innovations in the Vinca Culture of the Balkans. In T. L. Kienlin, B. W. Roberts (eds.), *Metals and Societies. Studies in Honour of Barbara S. Ottaway*. Rudolf Habelt. Bonn: 191–245.
- Bulatović A., Milanović D. 2020. *Bubanj. The Eneolithic and the Early Bronze Age Tell in Southeastern Serbia*. Mitteilungen der Prähistorischen Kommission 90. Österreichische Akademie der Wissenschaften. Wien.
- Catapotis M., Bassiakos Y., and Papadatos Y. 2011. Reconstructing early Cretan metallurgy: analytical results from

- the study of the metallurgical evidence from Kephala Petras, Siteia. In P. P. Betancourt, S. C. Ferrence (eds.), *Metalurgy: Understanding how, Learning Why. Studies in honor of James D. Muhly*. Prehistory Monographs 29. INSTAP Academic Press. Philadelphia: 69–78.
<https://doi.org/10.2307/j.ctt3fgvzd>
- Chernykh E. N. 1978. Aibunar, a Balkan copper mine of the fourth millenium BC. *Proceedings of the Prehistoric Society* 44: 203–217.
- Chiotis E., Koukouzas C., and Papadimitriou G. 1996. Old mining and metallurgical activities in Angistron-Serres-Macedonia. In K. Kotsakis, I. Stratis, M. Vavelidis, G. Tsokas, and E. Tsoukala (eds.), *Archaeometrical and Archaeological Research in Macedonia and Thrace*. Proceedings of the 2nd Symposium on Archaeometry. The Hellenic Archaeometric Society. Thessaloniki: 77–89.
- Darcque P., Koukouli-Chrysanthaki H., Malamidou D., Treuil R., and Tsirtsoni Z. 2007. Recent researches at the Neolithic settlement of Dikili Tash: an overview. In H. Todorova, M. Stefanovich, and G. Ivanov (eds.), *In the Steps of James Harvey Gaul, vol. 2. The Struma/Strymon River Valley in Prehistory*. Proceedings of the International Symposium “Strymon Praehistorikus” – Kjustendil-Blagoevgrad (Bulgaria) and Serres-Amphipolis (Greece). 27 September–1 October 2004. Gerda Henkel. Sofia: 247–256.
2020. Dikili Tash, village préhistorique de Macédoine Orientale, volume II, 2. *Histoire d'un tell: les recherches 1986–2016*. Recherches franco-helléniques VII. Bibliothèque de la Société Archéologique d'Athènes 331. École française d'Athènes. Société Archéologique d'Athènes. Athènes.
- Darcque P., Koukouli-Chryssanthaki H., Malamidou D., and Z. Tsirtsoni 2012–2013. Rapports sur les travaux de l'École française d'Athènes en 2012. Dikili Tash. *Bulletin de Correspondance Hellénique* 136–137: 756–758.
2014. Rapports sur les travaux de l'École française d'Athènes en 2013. Dikili Tash. *Bulletin de Correspondance Hellénique* 138: 607–610.
2015. New insights to the Copper Age economy and chronology at the tell settlement of Dikili Tash (Northern Greece). In S. Hansen, P. Raczyk, A. Anders, and A. Reingruber (eds.), *Neolithic and Copper Age between the Carpathians and the Aegean Sea. Chronologies and Technologies from 6th to 4th millennium BCE*. Rudolf Habelt. Bonn: 403–417.
- Dimakopoulou K. 1998. *Kosmimata tis Ellinikis Proistorias. O Neolithikos Thisauros*. Ministry of Culture. Athens. (in Greek)
- Efe T. 2002. The interaction between cultural/political entities and metalworking in Western Anatolia during the Chalcolithic and Early Bronze Age. In Ü. Yalçın (ed.), *Anatolian Metal II*. Der Anschnitt. Beiheft 15. Bergbau Museum. Bochum: 49–65.
- Elster S. E., Renfrew C. (eds.) 2003. *Prehistoric Sitagroi: Excavations in Northeast Greece, 1968–1970. Vol. 2: the final report*. Monumenta Archaeologica 20. Cotsen Institute of Archeology Press at UCLA. Los Angeles.
<https://doi.org/10.2307/j.ctvhhhtq>
- Fotiadis M. 1985. *Economy, ecology and settlement among subsistence farmers in the Serres bassin, Northeastern Greece, 5000–1000 B.C.* U.M.I Dissertation Information Service. Michigan.
- Gale N. H., Stos-Gale Z., Raduncheva A., + 3 authors, and J. Lang (eds.), *Mining and Metal Production Through the Ages*. The British Museum Press. London: 122–173.
- Georgakopoulou M. 2005. *Technology and Organisation of Early Cycladic Metallurgy: Copper on Seriphos and Keros, Greece*. Unpublished PhD thesis. University College of London. London.
- Grammenos D., Fotiadis M. 1980. Apo tous Proistorikous Oikismous tis Anatolikis Makedonias. *Anthropologika* 1: 15–53. (in Greek)
- Grammenos D. 1991. *Neolithikes Erevnes stin Kentriki kai Anatoliki Makedonia*. En Athinai Archaiologiki Etaira. Athens. (in Greek)
1997. *Neolithiki Makedonia*. Ministry of Culture. Athens. (in Greek)
- Hansen S. 2013. Innovative Metals. Copper, Gold and Silver in the Black Sea Region and the Carpathian Basin During the 5th and 4th Millennium BC. In S. Burmeister, S. Hansen, M. Kunst, and N. Müller-Scheeßel (eds.), *Metal Matters. Innovative Technologies and Social Change in Prehistory and Antiquity*. Marie Leidorf. Rahden/Westf.: 137–167.
- Hauptmann A., Pernicka E., and Wagner G. A. 1988. Untersuchungen zur Prozeßtechnik und zum Alter der frühen Blei-Silbergewinnung auf Thasos. In G. A. Wagner, G. Weisgerber (eds.), *Antike Edel- und Buntmetallgewinnung auf Thasos*. Der Anschnitt 6. Deutsches Bergbau Museum. Bochum: 88–112.
- Hellström P. 1987. *Paradeisos. A Late neolithic Settlement in Aegean Thrace*. Medelhavsmuseet Memoir 7. Stockholm.
- Hess K., Hauptmann A., Wright H., and Whallon R. 1998. Evidence of fourth millennium BC silver production at

Fatmali-Kalecik, East Anatolia. In T. Rehren, A. Hauptmann, and J. Muhly (eds.), *Metallurgica Antiqua*. Der Anschnitt. Beiheft 8. Veröffentlichungen aus dem Deutschen Bergbau-Museum Bochum Nr 72. Selbstverlag des Deutschen Bergbau-Museums. Bochum: 57–67.

Ifantidis F. 2018. *Practices of personal adornment in Neolithic Greece*. Archaeopress. Oxford.

Jovanović B. 2009. Beginning of the metal age in the central Balkans according to the results of the archaeometallurgy. *Journal of Mining and Metallurgy* 45(2): 143–148. <https://doi.org/10.2298/JMMB0902143J>

Kakavogianni O., Douni K., Nezeri F., and Georgakopoulou M. 2006. Apopeira technologikis prosengisis tis paragogis argirou kai molivdou kata tin Teliki Neolithiki kai Protoelladiki I periodo sta Mesogeia. In *Praktika B' Diethnous Sinedriou Arxaias Ellinikis Technologias*. Athens: 77–83. (in Greek)

Kakavogianni O., Douni K., and Nezeri F. 2008. Silver metallurgical finds dating from the end of the Final Neolithic period until the Middle Bronze Age in the area of Mesogeia. In I. Tzachili (ed.), *Aegean Metallurgy in the Bronze Age*. Proceedings of an International Symposium held at the University of Crete, Rethymnon, Greece. Ta Pragmata. Rethymnon: 49–61.

Kakavogianni O., Tselepi E., Dimitriou K., Katsavou Ch., and Douni K. 2016. The Neolithic and Early Bronze Age settlement in Merenta, Attica, and its regional context. In Z. Tsirtsoni (ed.), *The Human Face of Radiocarbon. Reassessing chronology in Prehistoric Greece and Bulgaria, 5000–3000 cal BC*. TMO 69. Maison de l'Orient et de la Méditerranée. Lyon: 437–451. <https://books.openedition.org/momeditions/545>

Klaunzer M. 2017. *Frühe Prestigeobjekte aus Metall in Anatolien. Selbstdarstellung, Kommunikation und Metallkonsum im späten 4. und 3. Jahrtausend v. Chr. Der Anschnitt*. Beiheft 35. VML Verlag Marie Leidorf GmbH. Rahden/Westf.

Kontaxi Ch., Yiannopoulos V., and Kaznezi A. 2004. To spiliao tou “Orfea” Alistratis Serron kai i evriteri periochi: protes spilaiologikes kai archaiologikes erevnes. *Archaio-logiko Ergo sti Makedonia kai Thraki* 18: 57–62. (in Greek)

Koukouli-Chryssanthaki H. 1974. O proistorikos oikismos sto Kastri. *Archaio-logiko Deltio* 29B: 778–781. (in Greek)

1990. Ta “metalla” tis Thasiakis Peraias. In H. Koukouli-Chryssanthaki, O. Picard (eds.), *Mnimi D. Lazaridi. Polis kai chora stin archaia Makedonia kai Thraki, Praktika Archaio-logikou Sinedriou, Kavala 9–11 Maiou*

1986. *Recherches Franco-Helléniques* 1. IPPO-École française d'Athènes. Thessaloniki: 493–514. (in Greek)

1992. Protoistoriki Thasos. Ta nekrotafeia tou oikismou. Dimosievmata tou Archeologikou Deltiou 45. Ministry of Culture. Athens. (in Greek)

Koukouli-Chryssanthaki H., Romiopoulou K. 1992. Oi askafes ston elliniko tomea tou proistorikou oikismou Dikili Tash (1961–1967). In *Diethnes Sinedrio gia tin Arcaia Thessalia sti mnimi tou D. R. Theochari*. Volos 1987. Athens: 226–248. (in Greek)

Koukouli-Chryssanthaki H., Weisgerber G. 1999. Prehistoric ochre mines on Thasos. In H. Koukouli-Chryssanthaki, A. Müller, and S. Papadopoulos (eds.), *Thasos, Matières premières et technologie de la Préhistoire à nos jours*. Actes du Colloque International 26–29/9/1995. Thasos, Liménaria. Ecole française d'Athènes. Athens: 129–144.

Koukouli-Chryssanthaki H., Bassiakos Y. 2002. Non-slaging copper production of the 5th millennium: the evidence from the Neolithic settlement of Promachon-Topolnica (Eastern Macedonia, Greece). *8th EAA Annual Meeting Abstracts*. Thessaloniki: 193–194.

Koukouli-Chryssanthaki H., Todorova H., Aslanis I., Vajsov I., and Valla M. 2007. Promachon-Topolnitsa: a Greek-Bulgarian archaeological project. In H. Todorova, M. Stefanovich, and G. Ivanov (eds.), *In the Steps of James Harvey Gaul, vol. 2: The Struma/Strymon River Valley in Prehistory*. Proceedings of the International Symposium “Strymon Praehistorikus”. Kjustendil-Blagoevgrad (Bulgaria) and Serres-Amphipolis (Greece). 27 September–1 October 2004. Gerda Henkel. Sofia: 43–78.

Koukouli-Chryssanthaki H., Malamidou D., and Lespez L. 2008. Cartes archéologiques de la plaine de Philippos-Drama et de ses bordures, I et II. In H. Koukouli-Chryssanthaki, R. Treuil (eds.), *Dikili Tash, village préhistorique de Macédoine orientale. Recherches franco-helléniques dirigées par la Société archéologique d'Athènes et l'École française d'Athènes (1986–2001)*. Bibliothèque de la Société archéologique d'Athènes 254. Athènes: 395–416.

Koukouli-Chryssanthaki H., Papadopoulos S. 2009. The island of Thasos and the Aegean world. In Y. Maniatis (ed.), *ASMOSIA VII*. Proceedings of the 7th international conference of the Association for the study of marble and other stones in Antiquity. Thasos 15–20.9.2003. BCH Suppl. 51. École française d'Athènes. Athènes: 1–18.

2016. The island of Thasos from the Neolithic to the Early Bronze Age. Excavation data and absolute dates. In Z. Tsirtsoni (ed.), *The Human Face of Radiocarbon. Reassessing chronology in Prehistoric Greece and Bul-*

- garia, 5000–3000 cal BC. TMO 69. Maison de l’Orient et de la Méditerranée. Lyon: 339–358.
<https://books.openedition.org/momeditions/531>
- Krauss R, Pernicka E, Kunze R, Dimitrov K, and Leshtakov P. (eds.), 2020. *Prehistoric Mining and Metallurgy at the Southeast Bulgarian Black Sea Coast*. RessourcenKulturen 12. Tübingen University Press. Tübingen.
<http://dx.doi.org/10.15496/publikation-51192>
- Kunze R, Abele J, Leshtakov P., Dimitrov K., Krauß R., and Rödel T. 2018. Archaeometallurgical prospections in the highlands of Medni Rid, southeastern Bulgaria. Preliminary report on fieldwork 2013–2015 with a focus upon remote sensing methods by means of LiDAR. *Journal of Archaeological Science Reports* 19: 596–617.
<https://doi.org/10.1016/j.jasrep.2018.03.021>
- Kunze R, Pernicka E. 2020a. The Beginning of Copper and Gold Metallurgy in the Old World. In R. Krauss, E. Pernicka, R. Kunze, K. Dimitrov, and P. Leshtakov (eds.), *Prehistoric Mining and Metallurgy at the Southeast Bulgarian Black Sea Coast*. RessourcenKulturen 12. Tübingen University Press. Tübingen: 67–86. https://publikationen.uni-tuebingen.de/xmlui/bitstream/handle/10900/109816/SFB_1070_12_Medni_Rid.pdf?sequence=1&isAllowed=y
- 2020b. Pre-Industrial Mining in Medni Rid. In R. Krauss, E. Pernicka, R. Kunze, K. Dimitrov, and P. Leshtakov (eds.), *Prehistoric Mining and Metallurgy at the Southeast Bulgarian Black Sea Coast*. RessourcenKulturen 12. Tübingen University Press. Tübingen: 391–418.
https://publikationen.uni-tuebingen.de/xmlui/bitstream/handle/10900/109816/SFB_1070_12_Medni_Rid.pdf?sequence=1&isAllowed=y
- Lazaridis D. 1964. Anaskafai kai erevnai eis Amfipolin. *Praktika tis En Athinais Archaialogikis Etaireias* 119: 37–38. (in Greek)
1965. Anaskafai kai erevnai eis Amfipolin. *Praktika tis En Athinais Archaialogikis Etaireias* 120: 50–52. (in Greek)
- Lespez L, Tsirtsoni Z., Darcque P., + 5 authors, and Oberlin C. 2013. The lowest levels at Dikili Tash, northern Greece: a missing link in the Early Neolithic of Europe. *Antiquity* 87(335): 30–45.
<https://doi.org/10.1017/S0003598X00048602>
- Malamidou D. 1997. Anaskafi ston proistoriko oikismo “Kryoneri” N. Kerdillion. *Archaialogiko Ergo sti Makedonia kai Thraki* 11: 509–538. (in Greek)
2007. Kryoneri: a Neolithic and Early Bronze Age settlement in the lower Strymon valley. In H. Todorova, M. Stefanovich, and G. Ivanov (eds.), *In the Steps of James Harvey Gaul, vol. 2. The Struma/Strymon River Valley in Prehistory*. Proceedings of the International Symposium “Strymon Praehistorikus”. Kjustendil-Blagoevgrad (Bulgaria) and Serres-Amphipolis (Greece). 27 September–1 October 2004. Gerda Henkel. Sofia: 297–308.
2016. Kryoneri: a settlement of the Late Neolithic and Early Bronze Age on the lower Strymon Valley, Eastern Macedonia. In Z. Tsirtsoni (ed.), *The Human Face of Radiocarbon. Reassessing chronology in Prehistoric Greece and Bulgaria, 5000–3000 cal BC*. TMO 69. Maison de l’Orient et de la Méditerranée. Lyon: 299–316.
<https://books.openedition.org/momeditions/526>
- Maddin R., Muhly J. D., and Stech T. 1999. Early metalworking at Çayönü. In A. Hauptmann, E. Pernicka, T. Rehren, and Ü. Yalçin (eds.), *The Beginnings of Metallurgy*. Der Anschnitt. Beiheft 9. Deutsches Bergbau-Museum. Bochum: 37–44.
- Maniatis Y. 2014. Chronologisi me anthraka-14 ton megalon politismikon allagon stin proistoriki Makedonia: profates ekselikseis. In E. Stefani, N. Merousis, and A. Dimoula (eds.), *A century of research in prehistoric Macedonia, 1912–2012*. International Conference Proceedings. Archaeological Museum of Thessaloniki. 22–24 November 2012. Archaeological Museum of Thessaloniki. Thessaloniki: 205–222. (in Greek)
- Maniatis Y., Nerantzis N., and Papadopoulos S. 2015. Radiocarbon dating of Agios Antonios, Potos, and intersite chronological variability in South Thasos, Greece. *Radiocarbon* 57(5): 807–823.
https://doi.org/10.2458/azu_rc.57.17778
- Mazanov V. 2004. Spätchalkolithische Metallfunde aus Junazite, Gebiet Pasardjik. In V. Nikolov, K. Bačvarov, and P. Kalchev (eds.), *Prehistoric Thrace*. Proceedings of the International Symposium in Stara Zagora. 30 September–4 October 2003. Institute of Archaeology with Museum. Regional Museum of History. Sofia, Stara Zagora: 394–401.
- Melfos V., Vavelidis M., Christofides G., and Seidel E. 2002. Origin and evolution of the Tertiary Maronia porphyry copper-molybdenum deposit, Thrace, Greece. *Mineralium Deposita* 37: 648–668.
- Melfos V., Voudouris P. 2017. Cenozoic metallogeny of Greece and potential for precious, critical and rare metals exploration. *Ore Geology Reviews* 89: 1030–1057.
<https://doi.org/10.1016/j.oregeorev.2017.05.029>
- Mirtsou E., Zwicker U., Nigge K., and Katsanos A. 1997. Analysis and metallographic examination of Dimitra’s metallic samples. In D. Grammenos (ed.), *Neolithiki Makedonia*. Ministry of Culture. Athens: 91–94.

- Mylonas G. 1941. The site of Akropotamos and the Neolithic period in Macedonia. *American Journal of Archaeology* 45: 557–576.
- Mylonas G., Bakalakis G. 1938. Anaskafai neolithikon oikismon Akropotamou kai Polystylou. *Praktika tis En Athinai Archaiologikis Etaireias* 93: 103–111. (in Greek)
- Nerantzis N., Papadopoulos S. 2013. Reassessment and new data on the diachronic relationship of Thasos Island with its indigenous metal resources: a review. *Archaeological and Anthropological Sciences* 5(3): 183–196. <https://doi.org/10.1007/s12520-013-0140-9>
- Nikolova L. 1999. *The Balkans in Later Prehistory. Periodization, Chronology and Cultural Development in the Final Copper and Early Bronze Age (Fourth and Third Millennia BC)*. BAR International Series 791. Archaeopress. Oxford.
- Ottaway B., Roberts B. 2008. The Emergence of Metalworking. In A. Jones (ed.), *Prehistoric Europe. Theory and Practice*. Wiley-Blackwell. Chichester: 193–225.
- Özdoğan M., Parzinger H. 2000. Aşağı Pınar and Kanlıgeçit excavations. Some new evidence on early metallurgy from eastern Thrace. In Ü. Yalçın (ed.), *Anatolian Metal I*. Deutsches Bergbaumuseum. Bochum: 13–91.
- Papadatos Y., Tsiopoulou M., Bassiakos Y., and Catapotis M. 2007. The beginning of metallurgy in Crete: new evidence from the FN-EM1 settlement at Kephala Petras, Siteia. In P. M. Day, C. P. Doonan (eds.), *Metallurgy in the Early Bronze Age Aegean*. Oxbow Books. Oxford: 154–167.
- Papadopoulos S. 2008. Silver and copper production practices in the prehistoric settlement at Limenaria, Thasos. In I. Tzachili (ed.), *Aegean metallurgy in the Bronze Age*. Proceedings of an International Symposium held at the University of Crete. Ta Pragmata. Rethymno: 59–67.
- Papadopoulos S., Malamidou D. 1997. Limenaria, oikopedo Ioanni Liouda. *Archaiologiko Deltio* 52(B3): 836–837. (in Greek)
2002. Oi proimes faseis katoikisis tou neolithikou oikismou ton Limenarion. *Archaiologiko Ergo sti Makedonia kai Thraki* 14: 25–32. (in Greek)
2008. Limenaria. A Neolithic and Early Bronze Age settlement at Thasos, North-East Aegean. In H. Erkanal, H. Hauptmann, V. Sahoglu, and R. Tuncel (eds.), *The Aegean in the Neolithic, Chalcolithic and the Early Bronze Age*. Proceedings of the International Symposium at Urla-Izmir. October 13–19, 1997. AU Sualti Arkeolojik Arastirma ve Uygulama Merkezi (ANKUSAM). Ankara: 427–445.
- (eds.) 2012. *Deka Chronia Anaskafikis Erevnas ston proistoriko Oikismo Limenarion Thasou*. Praktika Ime-ridas.Thasos 11 Iouliou 2003. Ecole française d'Athènes. Thessaloniki. (in Greek)
- Peristeri K. 2002. Anaskafiki erevna 2002 ston proistoriko oikismo tou Arkadikou Dramas. *Archaiologiko Ergo sti Makedonia kai Thraki* 16: 137–144. (in Greek)
2004. Anaskafiki erevna 2003 ston proistoriko oikismo tou Arkadikou Dramas sta grotmachia 542, 545 idiok-tisias F. Chatzigiannidi. *Archaiologiko Ergo sti Makedonia kai Thraki* 18: 25–32. (in Greek)
- Pernicka E. 1993. Eneolithic and Early Bronze Age Copper artefacts from the Balkans and their relation to Serbian Copper Ores. *Praehistorische Zeitschrift* 68(1): 1–54.
- Pernicka E., Begemann F., Schmitt-Strecker S., Todorova H., and Kuleff I. 1997. Prehistoric Copper in Bulgaria: Its composition and Provenance. *Eurasia Antiqua* 3: 41–180.
- Pernicka E., Rehren T., and Schmitt-Strecker S. 1998. Late Uruk silver production by cupellation at Habuba Kabira, Syria. In T. Rehren, A. Hauptmann, and J. Muhly (eds.), *Metallurgica Antiqua*. Der Anschnitt. Beiheft 8. Deutsches Bergbau-Museum. Bochum: 123–134.
- Pernicka E., Wagner G. A. 1988: Thasos als Rohstoffquelle für Bunt- und Edelmetalle im Altertum. In G. A. Wagner, G. Weisgerber (eds.), *Antike Edel- und Buntmetallgewinnung auf Thasos*. Der Anschnitt. Beiheft 6. Deutsches Bergbau-Museum. Bochum: 224–231.
- Pernicka E., Wagner G. A., and Todt W. 1992. Chemische und isotopische Zusammensetzung früheisenzeitlicher Bleiartefakte aus Thasos. In H. Koukouli-Chryssanthaki (ed.), *Protoistoriki Thasos. Ta nekrotafeia tou oikismou*. Dimosievmata tou Archeologikou Deltiou 45. Ministry of Culture. Athens: 773–778.
- Photos E., Koukouli-Chryssanthaki H., Tylecote R. F., and Gialoglou G. 1989. Precious metals extractions in Palaia Kavala, N.E. Greece: an archaeometallurgical attempt to locate Skapte Hyle. In A. Hauptmann, E. Pernicka, and G. A. Wagner (eds.), *Old World Archaeometallurgy*. Proceedings of the International Symposium Heidelberg 1987. Der Anschnitt. Beiheft 7. Deutsches Bergbau-Museum. Bochum: 179–190.
- Radivojević M., Rehren T., Pernicka E., Šljivar D., Brauns M., and Borčić D. 2010. On the origins of extractive metallurgy: new evidence from Europe. *Journal of Archaeological Science* 37: 2775–2787. <https://doi.org/10.1016/j.jas.2010.06.012>

- Radivojević M., Rehren T. 2016. Paint It Black: The Rise of Metallurgy in the Balkans. *Journal of Archaeological Method and Theory* 23: 200–237. <https://doi.org/10.1007/s10816-014-9238-3>
- Radivojević M., Roberts B. W. 2021. Early Balkan Metallurgy: Origins, Evolution and Society, 6200–3700 BC. *Journal of World Prehistory* 34:195–278. <https://doi.org/10.1007/s10963-021-09155-7>
- Rehren T., Penkova P., and Pernicka E. 2020. The Chalcolithic Copper Smelting at Akladi Cheiri. In R. Krauss, E. Pernicka, R. Kunze, K. Dimitrov, and P. Leshtakov (eds.), *Prehistoric Mining and Metallurgy at the Southeast Bulgarian Black Sea Coast*. RessourcenKulturen. University of Tübingen Press. Tübingen: 141–160. https://publikationen.uni-tuebingen.de/xmlui/bitstream/handle/10900/109816/SFB_1070_12_Medni_Rid.pdf?sequence=1&isAllowed=y
- Renfrew C., Slater E. A. 2003. Metal artifacts and metallurgy. In E. Elster, C. Renfrew (eds.), *Prehistoric Sitagroi: Excavations in Northern Greece, 1968–1970. Volume 2: The Final Report*. Monumenta Archaeologica 20. Cotsen Institute of Archeology Press at UCLA. Los Angeles: 301–318. <https://doi.org/10.2307/j.ctvhhftq>
- Renfrew C., Gimbutas M., and Elster E. (eds.) 1986. *Excavations at Sitagroi: a prehistoric village in Northeastern Greece, vol. I*. Monumenta Archaeologica 13. Institute of Archeology. University of California. Cotsen Institute of Archeology Press. Los Angeles.
- Rothenberg B., Merkel J. 1998. Chalcolithic 5th Millennium BC Copper Smelting at Timna. *Institute of Archaeological Metallurgical Studies Newsletter* 20: 1–3.
- Sanidas G. M., Malamidou D., and Nerantzis N. 2018. Paros, Thasos and the Question of Mining and Metal Production before and after Colonisation: Review and Perspectives. In D. Katsonopoulou (ed.), *Paros IV, Paros and its colonies*. Proceedings of the Fourth International Conference on the Archaeology of Paros and the Cyclades, Paroikia. Paros, 11–14 June 2015. The Institute for archaeology of Paros and the Cyclades. Athens: 251–265.
- Séfériades M. 1983. Introduction à la Préhistoire de la Macédoine orientale. *Bulletin de Correspondance Hellénique* 107: 635–677.
1992. Le métal. In R. Treuil (ed.), *Dikili Tash, village préhistorique de Macédoine Orientale I. Fouilles de Jean Deshayes (1961–1975), vol. 1*. BCH Suppl. XXIV. École française d'Athènes. Athènes: 113–119.
- Stojić M., Jocić M. 2006. *Cultural Stratigraphy of Prehistoric Sites in the Niš and in the Kruševa Region, Volume I – II*. Arheološka grada Srbije. Arheološki Institut. Beograd.
- Storberg J. 2002. The evolution of capital theory. A critique of a theory of social capital and implications for HRD. *Human Resource Development Review* 1(4): 468–499. <https://doi.org/10.1177/1534484302238437>
- Šljivar D. 2006. The Earliest Copper Metallurgy in the Central Balkans. *Metallurgija* 12(2–3): 93–104.
- Thornton C. P. 2001. *The Domestication of Metal: A Re-assessment of the Early Use of Copper Minerals and Metal in Anatolia and Southeastern Europe*. Unpublished M.Phil. thesis. University of Cambridge. Cambridge.
- Tolia-Christakou M., Siopi S. 2008. Sostiki anaskafiki erevna ston proistoriko oikismo tou Agiou Pnevmatos Serron. *Archaiologiko Ergo sti Makedonia kai Thraki* 22: 503–512. (in Greek)
- Touloumis K., Peristeri K. 1991. Anaskafi ston Arkadiko Dramas: prokatakrtikes paratiriseis gia tin organosi tou chorou me vasi ti diakrasi esoterikon kai eksoterikon choron. *Archaiologiko Ergo sti Makedonia kai Thraki* 5: 359–370. (in Greek)
- Trantalidou K., Skaraki V., Kara I., and Ntinou M. 2005. Stratigikes epiviosis kata tin tetarti chilietia: stixeia apo tin egkatakrtasi stin anatoliki ochthi tou Angiti. *Archaiologiko Ergo sti Makedonia kai Thraki* 19: 45–80. (in Greek)
- Treuil R. (ed.) 1992. *Dikili Tash, village préhistorique de Macédoine orientale, I. Fouilles de Jean Deshayes (1961–1975), vol. 1*. BCH Suppl. XXIV. École française d'Athènes. Athènes.
- Tsirtsoni Z. 2014. Formation or Transformation? The 4th Millennium BC in the Aegean and the Balkans. In B. Horejs, M. Mehofer (eds.), *Western Anatolia before Troy. Proto-Urbanisation in the 4th Millennium BC?* Proceedings of the International Symposium held at the Kunsthistorisches Museum Wien, Vienna, Austria, 21–24 November, 2012. OREA 1. Österreichische Akademie der Wissenschaften. Wien: 275–304. <http://www.austria.at/7761-6inhalt?frames=yes>
2016. The Late Neolithic II (Chalcolithic)–EBA transition at the tell of Dikili Tash. In Z. Tsirtsoni (ed.), *The Human Face of Radiocarbon. Reassessing chronology in Prehistoric Greece and Bulgaria, 5000–3000 cal BC*. TMO 69. Maison de l'Orient et de la Méditerranée. Lyon: 271–297. <https://books.openedition.org/momeditions/525>
2018. L'or et son usage dans la région de Philippos au Ve millénaire av. J.-C. *Comptes Rendus de l'Académie*

- des Inscriptions et Belles Lettres* 161(3): 1295–1316. https://www.persee.fr/doc/crai_0065-0536_2017_num_161_3_96301
- Vavelidis M., Chatzikirkou A., Katirtzoglou K., Tarkian M., Melfos V., and Nimfopoulos M. 1995. An ancient gold mine in the Alistrati area, Northern Greece. *Geological Society of Greece* 4: 860–864.
- Vavelidis M., Christofides G., and Melfos V. 1996. The Au-Ag-bearing mineralization and placer gold of Palea Kavala (Macedonia, N. Greece). In V. Knežević-Dorđević, B. Krstić (eds.), *Terranes of Serbia: The formation of the geologic framework of Serbia and the adjacent regions*. Faculty of Mining and Geology, University of Belgrade. Committee for Geodynamics of the Serbian Academy of Sciences and Arts. Belgrade: 311–316.
- Vavelidis M., Gialoglou G., Melfos V., and Wagner G. A. 1996. Goldgrube in Palaea Kavala Griechenland: Entdeckung von Skaptehyle. *Erzmetall* 49: 547–554.
- Vavelidis M., Gialoglou G., Pernicka E., and Wagner G. A. 1988a. Die Buntmetall und Eisen-Mangan-Lagerstätten von Thasos. In G. A. Wagner, G. Weisgerber (eds.), *Antike Edel- und Buntmetallgewinnung auf Thasos*. Der Anschnitt. Beiheft 6. Deutsches Bergbau-Museum. Bochum: 40–58.
- Vavelidis, M., Pernicka, E., and Wagner G. A. 1988b. Die Goldvorkommen von Thasos. In G. A. Wagner, G. Weisgerber (eds.), *Antike Edel- und Buntmetallgewinnung auf Thasos*. Der Anschnitt. Beiheft 6. Deutsches Bergbau-Museum. Bochum: 113–124.
- Vaxevanopoulos M., Blichert-Toft J., Davis G., and Albarede F. 2022. New findings of ancient Greek sources. *Journal of Archeological Science* 137: 105474. <https://doi.org/10.1016/j.jas.2021.105474>
- Vaxevanopoulos M. 2017a. *Recording and study of ancient mining activity on Mount Pangaeon, E. Macedonia, Greece*. Unpublished PhD thesis. Aristotle University of Thessaloniki. Thessaloniki. (in Greek)
- 2017b. I ekmetallesi tou chrisou kai ton allon metallon tou orous Pangaïou stin archaiotita. In A. Mentizis (ed.), *Pangaïo I. Ta Praktika tou Protou Sinedriou Topikis Istorias*. Eleftheroupoli: 124–140. (in Greek)
- Vaxevanopoulos M., Vavelidis M., Melfos V., Malamidou D., and Pavlides S. 2018. Ancient mining and metallurgical activity at the gold-silver-copper ore deposits in Mavrorofli area, Mount Pangaeon (NE Greece). In E. Ben-Yosef (ed.), *Mining for Ancient Copper: Essays in Memory of Beno Rothenberg*. Monograph Series 37. Tel Aviv University-Sonia and Marco Nadler Institute of Archaeology. Tel Aviv: 385–398.
- Vaxevanopoulos M., Vavelidis M., Malamidou D., and Melfos V. 2020. Metal production chain at Pangaeon Mountain, Eastern Macedonia, Greece. In K. Sheedy, G. Davis (eds.), *Mines, Metals and Money. Ancient World Studies in Science, Archaeology and History*. Australian Centre for Ancient Numismatic Studies. Macquarie University. The Royal Numismatic Society. London: 75–83.
- Wagner G. A., Pernicka E., Gentner W., and Gropengieser H. 1979. Nachweis antiken Goldbergbaus auf Thasos: Bestätigung Herodots. *Naturwiss.* 66: 613.
- Wagner G. A., Pernicka E., Gentner W., and Vavelidis M. 1981. Discovery of ancient gold mining on Thasos (Greece). In *Actes du XXe Symposium international d'Archéométrie*. Paris 26–29 mars 1980. Vol III. Revue d'Archéométrie 1: 313–320.
- Wagner G. A., Weisgerber G. (eds.) 1988. *Antike Edel- und Buntmetallgewinnung auf Thasos*. Der Anschnitt. Beiheft 6. Deutsches Bergbau-Museum. Bochum.
- Yalçın Ü. 2000. Frühchalkolitische Metallfunde von Mersin-Yumuktepe: Beginn der extraktiven Metallurgie? *Türkiye Bilimler Akademisi tarafından yayımlanan Türkiye Bilimler Akademisi Arkeoloji Dergisi (TÜBA-AR)* 3: 109–128.
- Yener K. A. 2000. *The Domestication of Metals: The Rise of Complex Metal Industries in Anatolia*. Brill. Leiden.
- Zachos K. L. 1996a. Metallurgy. In G. A. Papathanasopoulos (ed.), *Neolithic Culture in Greece*. N. P. Goulandris Foundation. Museum of Cycladic Art. Athens: 140–143.
- 1996b. Metal jewellery. In G. A. Papathanasopoulos (ed.), *Neolithic Culture in Greece*. N. P. Goulandris Foundation. Museum of Cycladic Art. Athens: 166–167, 339–340.
2010. I metallourgia stin Ellada kai sti Notioanatoliki Europi kata tin 5i kai tin 4i chilietia. In N. Papadimitriou, Z. Tsirtsoni (eds.), *I Ellada sto evritero politismiko plaisio ton Valkanion kata tin 5i kai 4i chilietia*. N. P. Goulandris Foundation. Museum of Cycladic Art. Athens: 77–91. (in Greek)