



**HAL**  
open science

## Deciphering the pluripotency continuum in rabbit pre-implantation embryos

Wilhelm Bouchereau, Thierry Joly, Luc Jouneau, Catherine Archilla, Murielle Godet, Irène Aksoy, Anaïs Moulin, Véronique Duranthon, Marine Pratlong, Dany Severac, et al.

### ► To cite this version:

Wilhelm Bouchereau, Thierry Joly, Luc Jouneau, Catherine Archilla, Murielle Godet, et al.. Deciphering the pluripotency continuum in rabbit pre-implantation embryos. Annual Meeting International Society for Stem Cell Research (ISSCR), Jun 2021, Virtual, United States. . hal-03800665

**HAL Id: hal-03800665**

**<https://hal.science/hal-03800665>**

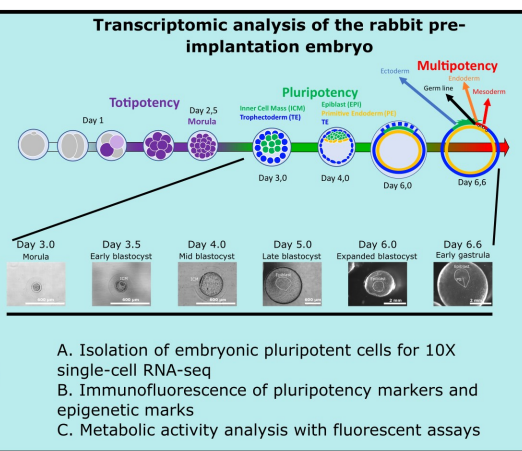
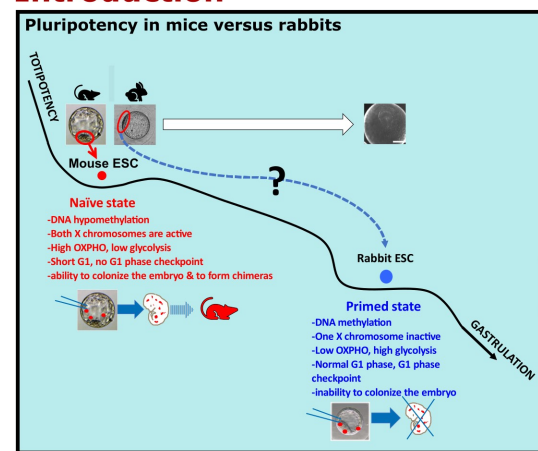
Submitted on 5 Oct 2023

**HAL** is a multi-disciplinary open access archive for the deposit and dissemination of scientific research documents, whether they are published or not. The documents may come from teaching and research institutions in France or abroad, or from public or private research centers.

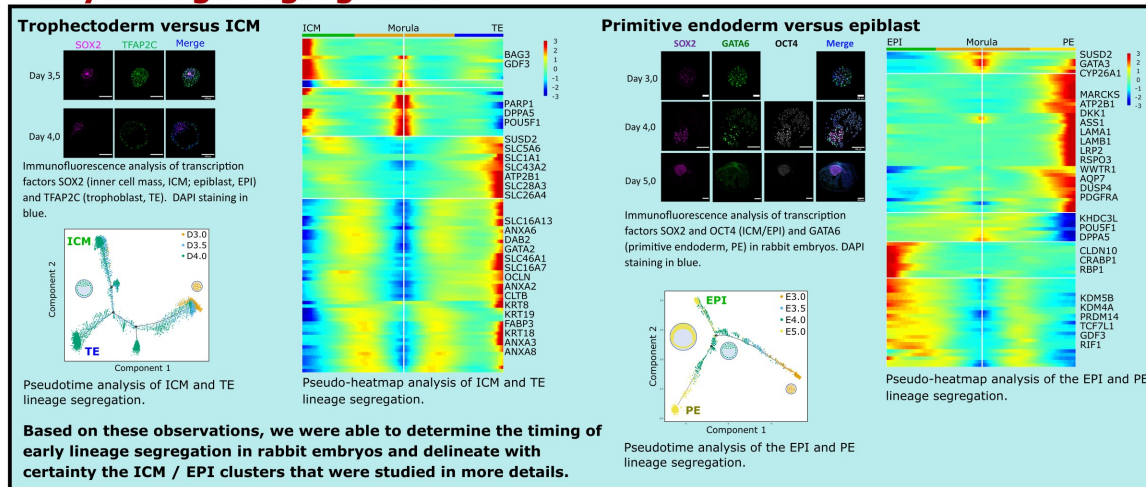
L'archive ouverte pluridisciplinaire **HAL**, est destinée au dépôt et à la diffusion de documents scientifiques de niveau recherche, publiés ou non, émanant des établissements d'enseignement et de recherche français ou étrangers, des laboratoires publics ou privés.

Wilhelm Bouchereau<sup>1</sup>, Thierry Joly<sup>2,3</sup>, Luc Jouneau<sup>4</sup>, Catherine Archilla<sup>4</sup>, Murielle Godet<sup>1</sup>, Irène Aksoy<sup>1</sup>, Anaïs Moulin<sup>1</sup>, Véronique Duranthon<sup>4</sup>, Marine Pratlong<sup>5,6</sup>, Dany Severac<sup>5,6</sup>, Marielle Afanassieff<sup>1</sup>, Pierre Savatier<sup>1</sup>, Nathalie Beaujean<sup>1</sup>.  
<sup>1</sup>Univ Lyon, Université Lyon 1, INSERM, Stem Cell and Brain Research Institute U1208, INRA USC 1361, F-69500 Bron, France. <sup>2</sup>ISARA-Lyon, F-69007 Lyon France. <sup>3</sup>VetAgroSup, UPSP ICE, F-69280 Marcy l'Etoile, France. <sup>4</sup>UMR BDR, INRA, ENVA, Université Paris-Saclay, 78350, Jouy-en-Josas, France. <sup>5</sup>Univ Montpellier, CNRS, INSERM, Montpellier France. <sup>6</sup>Montpellier GenomiX, France Génomique, Montpellier, France

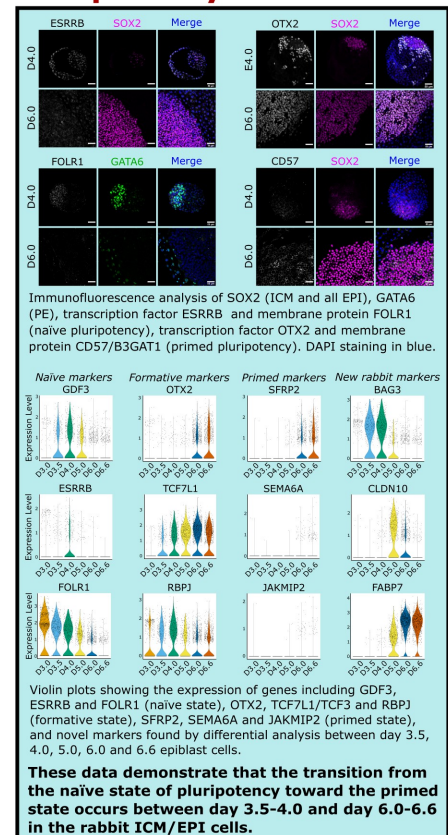
## Introduction



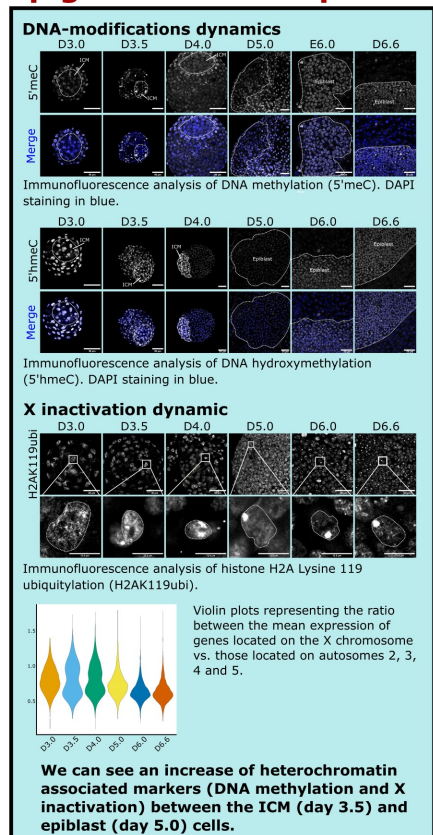
## Early lineage segregation



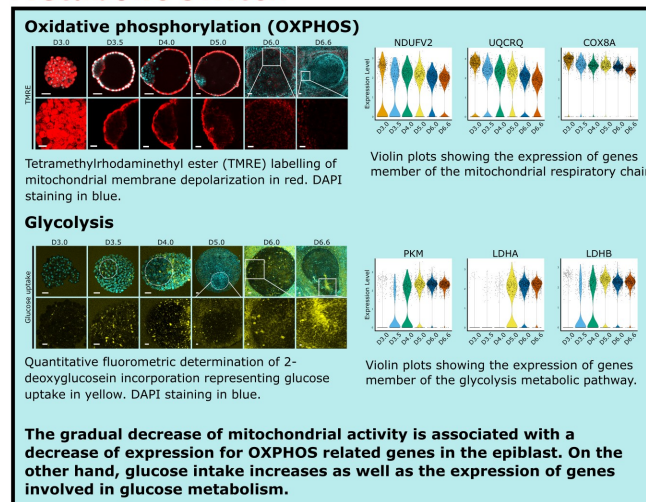
## Pluripotency continuum



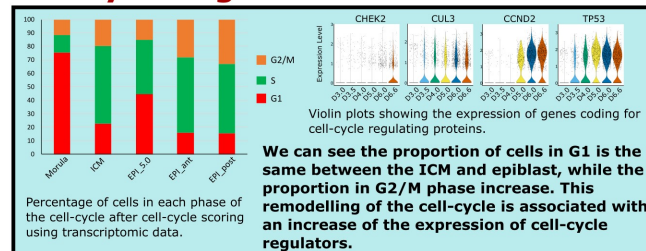
## Epigenetic landscape



## Metabolic switch



## Cell-cycle regulation



## Conclusion

