



**HAL**  
open science

## Rolling vs. seasonal PMF: real-world multi-site and synthetic dataset comparison

Marta Via, Gang Chen, Francesco Canonaco, Kaspar Daellenbach, Benjamin Chazeau, Hasna Chebaicheb, Jianhui Jiang, Hannes Keernik, Chunshui Lin, Nicolas Marchand, et al.

### ► To cite this version:

Marta Via, Gang Chen, Francesco Canonaco, Kaspar Daellenbach, Benjamin Chazeau, et al.. Rolling vs. seasonal PMF: real-world multi-site and synthetic dataset comparison. Atmospheric Measurement Techniques, 2022, 15 (18), pp.5479-5495. 10.5194/amt-15-5479-2022 . hal-03800466

**HAL Id: hal-03800466**

**<https://hal.science/hal-03800466v1>**

Submitted on 21 Nov 2022

**HAL** is a multi-disciplinary open access archive for the deposit and dissemination of scientific research documents, whether they are published or not. The documents may come from teaching and research institutions in France or abroad, or from public or private research centers.

L'archive ouverte pluridisciplinaire **HAL**, est destinée au dépôt et à la diffusion de documents scientifiques de niveau recherche, publiés ou non, émanant des établissements d'enseignement et de recherche français ou étrangers, des laboratoires publics ou privés.



Distributed under a Creative Commons Attribution 4.0 International License



## Rolling vs. seasonal PMF: real-world multi-site and synthetic dataset comparison

Marta Via<sup>1,2</sup>, Gang Chen<sup>3,a</sup>, Francesco Canonaco<sup>3,4</sup>, Kaspar R. Daellenbach<sup>3</sup>, Benjamin Chazau<sup>5</sup>, Hasna Chebaicheb<sup>6,7</sup>, Jianhui Jiang<sup>8</sup>, Hannes Keernik<sup>9,10</sup>, Chunshui Lin<sup>11</sup>, Nicolas Marchand<sup>5</sup>, Cristina Marin<sup>12,13</sup>, Colin O'Dowd<sup>11</sup>, Jurgita Ovadnevaite<sup>11</sup>, Jean-Eudes Petit<sup>14</sup>, Michael Pikridas<sup>15</sup>, Véronique Riffault<sup>6</sup>, Jean Sciare<sup>15</sup>, Jay G. Slowik<sup>3</sup>, Leïla Simon<sup>7,13</sup>, Jeni Vasilescu<sup>12</sup>, Yunjiang Zhang<sup>7,13</sup>, Olivier Favez<sup>7</sup>, André S. H. Prévôt<sup>3</sup>, Andrés Alastuey<sup>1</sup>, and María Cruz Minguillón<sup>1</sup>

<sup>1</sup>Institute of Environmental Assessment and Water Research, Barcelona, 08034, Spain

<sup>2</sup>Department of Applied Physics, University of Barcelona, Barcelona, 08028, Spain

<sup>3</sup>Laboratory of Atmospheric Chemistry, Paul Scherrer Institute, 5232 Villigen PSI, Switzerland

<sup>4</sup>Datalystica Ltd., Park innovAARE, 5234 Villigen, Switzerland

<sup>5</sup>Aix Marseille Univ., CNRS, LCE, Marseille, France

<sup>6</sup>IMT Nord Europe, Institut Mines-Télécom, Univ. Lille, Centre for Energy and Environment, 59000 Lille, France

<sup>7</sup>Institut National de l'Environnement Industriel et des Risques, Parc Technologique ALATA, 60550, Verneuil-en-Halatte, France

<sup>8</sup>Shanghai Key Lab for Urban Ecological Processes and Eco-Restoration, School of Ecological and Environmental Sciences, East China Normal University, 200241 Shanghai, China

<sup>9</sup>Air Quality and Climate Department, Estonian Environmental Research Centre, Marja 4d, 10617 Tallinn, Estonia

<sup>10</sup>Department of Software Science, Tallinn University of Technology, 19086 Tallinn, Estonia

<sup>11</sup>School of Physics and Centre for Climate and Air Pollution Studies, Ryan Institute, National University of Ireland Galway, University Road, H91CF50 Galway, Ireland

<sup>12</sup>National Institute of Research and Development for Optoelectronics INOE2000, Atomistilor 409, RO77125 Magurele, Romania

<sup>13</sup>Department of Physics, Politehnica University of Bucharest, 313 Spl. Independentei Str., Bucharest, Romania

<sup>14</sup>Laboratoire des Sciences du Climat et de l'Environnement, Orme des Merisiers, 91190 Gif-sur-Yvette, France

<sup>15</sup>Climate and Atmosphere Research Center, The Cyprus Institute, Nicosia, 2121, Cyprus

<sup>a</sup>now at: MRC Centre for Environment and Health, Environmental Research Group, Imperial College London, London, UK

**Correspondence:** Marta Via (marta.via@idaea.csic.es)

Received: 29 April 2022 – Discussion started: 30 May 2022

Revised: 30 August 2022 – Accepted: 31 August 2022 – Published: 27 September 2022

**Abstract.** Particulate matter (PM) has become a major concern in terms of human health and climate impact. In particular, the source apportionment (SA) of organic aerosols (OA) present in submicron particles (PM<sub>1</sub>) has gained relevance as an atmospheric research field due to the diversity and complexity of its primary sources and secondary formation processes. Moreover, relatively simple but robust instruments such as the Aerosol Chemical Speciation Monitor (ACSM) are now widely available for the near-real-time online determination of the composition of the non-refractory PM<sub>1</sub>.

One of the most used tools for SA purposes is the source-receptor positive matrix factorisation (PMF) model. Even though the recently developed *rolling PMF* technique has already been used for OA SA on ACSM datasets, no study has assessed its added value compared to the more common *seasonal PMF* method using a practical approach yet. In this paper, both techniques were applied to a synthetic dataset and to nine European ACSM datasets in order to spot the main output discrepancies between methods. The main advantage of the synthetic dataset approach was that the meth-

ods' outputs could be compared to the expected "true" values, i.e. the original synthetic dataset values. This approach revealed similar apportionment results amongst methods, although the *rolling* PMF profile's adaptability feature proved to be advantageous, as it generated output profiles that moved nearer to the *truth* points. Nevertheless, these results highlighted the impact of the profile anchor on the solution, as the use of a different anchor with respect to the *truth* led to significantly different results in both methods. In the multi-site study, while differences were generally not significant when considering year-long periods, their importance grew towards shorter time spans, as in intra-month or intra-day cycles. As far as correlation with external measurements is concerned, *rolling* PMF performed better than *seasonal* PMF globally for the ambient datasets investigated here, especially in periods between seasons. The results of this multi-site comparison coincide with the synthetic dataset in terms of *rolling*–*seasonal* similarity and *rolling* PMF reporting moderate improvements. Altogether, the results of this study provide solid evidence of the robustness of both methods and of the overall efficiency of the recently proposed *rolling* PMF approach.

## 1 Introduction

Air pollution is one of the biggest current and future environmental threats to human health and climate change. Results from Chen and Hoek (2020) notably relate an increased risk for all-cause mortality due to fine aerosol (PM<sub>2.5</sub>, particulate matter with an aerodynamic particle diameter below 2.5 μm) exposure. Also, even for concentrations below the WHO guidelines threshold (annual means of 5 μg m<sup>-3</sup> for PM<sub>2.5</sub> at the time that this article was published), the life expectancy of the population of Europe has been reduced by an average of about 8.6 months. In turn, fine atmospheric aerosols also play a role in climate change (IPCC, 2021) due to both their direct (through radiation) and indirect (through cloud interaction) effects.

Exposure to submicron particulate matter (PM<sub>1</sub>, particulate matter with an aerodynamic particle diameter of less than 1 μm) is known to have severe impacts on the respiratory system (Yang et al., 2018) and even to pass the blood–brain barrier to act directly on the central nervous system (Shih et al., 2018; Yin et al., 2020). Impact mitigation strategies must be designed to both reduce emissions (primary aerosols) and prevent the formation of indirectly emitted (or secondary) aerosols as well as to target the most harmful components, especially since recent studies have demonstrated that the mitigation strategies might be more effective in tackling specific PM sources rather than the bulk PM (Daellenbach et al., 2020). With the purpose of identifying the most appropriate reduction strategies, source apportionment (SA) methodologies, designed for identifying pollutant sources, must be

constantly improved. One of the most widely used receptor models for SA is the positive matrix factorisation (PMF) model (Paatero and Tapper, 1994) along with the ME-2 engine (Paatero, 1999). This model can handle various types of data, such as online and offline PM datasets (Amato et al., 2016; Crippa et al., 2014; Rai et al., 2020, respectively), VOCs (Yuan et al., 2012), multi-wavelength absorption of refractory carbon (Forello et al., 2019) etc.; assemble different types of pollutants (Ogulei et al., 2005); and also be coupled to machine learning techniques (Heikkinen et al., 2021; Rutherford et al., 2021).

Since organic species account for 20–90 % of the total submicron aerosol mass (Chen et al., 2022; Jimenez et al., 2009), scientific interest has been set on the characterisation of these pollutants by offline and online techniques. The use of ACSM (Aerosol Chemical Speciation Monitor, Aerodyne Research Inc., Billerica, MA, USA) for continuous monitoring and quantification of submicron non-refractory compounds has become a key approach for air quality (AQ) assessment. The application of PMF to long-term ACSM submicron organic aerosol (OA) datasets (Sun et al., 2018; Zhang et al., 2019) under the Source Finder (SoFi) Pro software package (Datalystica Ltd.) allows us to quantify and identify the contribution of major groups of organic compounds. The formerly recommended methodology for OA SA was *seasonal* PMF, which requires splitting the dataset into seasons to perform PMF independently, providing *seasonal* but not an intra-seasonal variation of factor profiles, as reported in Canonaco et al. (2015). The more recently developed *rolling* PMF (Canonaco et al., 2021; Parworth et al., 2015) applies the model on moving or rolling windows of a selected length, and therefore it accounts for the temporal evolution of the OA source fingerprints. The current state of the art supports that *rolling* PMF should be more accurate and/or suitable than *seasonal* PMF due to its profile-adaptation feature and its lower computational and evaluation time, which will be the base hypothesis of this study. Nevertheless, only a few individual studies (Chazeau et al., 2021; Chen et al., 2021; Tobler et al., 2021) and an intercomparison (Chen et al., 2022) using this technique have been published so far, and no thorough *seasonal vs. rolling* comparison has been conducted thus far to the best of our knowledge.

This research aims to contribute to a deeper understanding of the advantages and weaknesses of the *rolling* and *seasonal* methods, assessing the differences regarding site or dataset characteristics and evaluating the environmental reasonability of their outcomes. This task is of great importance, as the knowledge of the strengths of each method will come in handy when choosing the best one for each study necessity, e.g. the better SA method for specific OA source outbreaks. Furthermore, conclusions from this analysis will also impact the quality of health, climate and modelling studies by means of an improved description of the main OA pollution sources.

## 2 Methodology

### 2.1 Instrumentation and datasets

This study is one of the outcomes of the Chemical On-Line cOmpoSition and Source Apportionment of fine aerosoL (COLOSSAL) project (<https://cost-colossal.eu/>, last access: 14 September 2022) supported by the COST programme and based on measurements performed within the ACTRIS network. It is closely related to the overview study of Chen et al. (2022), in which 22 more-than-one-year-long PMF datasets were joined for a *rolling* PMF intercomparison. Participants of the WG2 of the COST COLOSSAL Action contributed to the preparation of a protocol for SA, with the purpose of homogenising the PMF application (Chen et al., 2022). A total of 9 of the 22 datasets from that study, whose main characteristics can be found in Table 1, were also provided for this *rolling–seasonal* comparison. Some of them contain site-specific sources related to instrument artefacts or proximity to pollution hotspots. The factors identified at all sites are hydrocarbon-like OA (HOA), biomass burning OA (BBOA, except for the Dublin site), less-oxidised oxygenated OA (LO-OOA), more-oxidised oxygenated OA (MO-OOA), and oxygenated OA (OOA), which represents the sum of LO-OOA and MO-OOA. Other factors are only present at one or two sites: cooking-like OA (COA; in Barcelona–Palau Reial and Marseille–Longchamp); 58-related OA (58-OA; in Magadino); shipping and industry OA (SHINDOA; in Marseille–Longchamp); wood combustion, coal combustion, and peat combustion OA (WCOA, CCOA, PCOA, respectively; in Dublin). The 58-related OA, as explained in Chen et al. (2021), is a factor dominated by nitrogen fragments ( $m/z$  58,  $m/z$  84,  $m/z$  94) that appeared as an artefact after the filament replacement in that instrument.

All data presented in the multi-site intercomparison were obtained from ACSMs, which use a mass spectrometer to measure the composition of non-refractory submicron particulate matter (NR-PM<sub>1</sub>) in near-real time. It works at a lower mass-to-charge resolution, but it is more robust compared to the aerosol mass spectrometer (AMS, Aerodyne Research Inc, Billerica, MA, USA), allowing for long-term deployment. Both quadrupole (Q-ACSM) and time-of-flight (ToF-ACSM) ACSMs were used, further described respectively in Fröhlich et al. (2013) and Ng et al. (2011a). The resolution of ToF-ACSM datasets (10 min) was averaged to 30 min (resolution of the Q-ACSM) to have harmonised timestamps. The analysis software (version 1.6.1.1 for Q-ACSM and version 2.3.9 for ToF-ACSM), implemented in Igor Pro (WaveMetrics, Inc.), was provided by Aerodyne Research Inc. The treatment of the multi-site ACSM data to generate PMF input matrices is summarised in Table S1 in the Supplement, and more details can be found in the publications cited therein.

Ancillary measurements consisted of (i) SO<sub>4</sub><sup>2-</sup>, NO<sub>3</sub><sup>-</sup>, NH<sub>4</sub><sup>+</sup>, and Cl<sup>-</sup> measurements from ACSM; (ii) black carbon (BC) from the filter-based absorption photometer AE33 from

Magee Scientific (Drinovec et al., 2015), except for those from the Cyprus Atmospheric Observatory – Agia Marina Xyliatou and Magadino, in which the AE31 was used; BC concentrations were differentiated according to their main sources into fossil fuel (BC<sub>ff</sub>) and wood burning (BC<sub>wb</sub>) BC by applying the Sandradewi model (Sandradewi et al., 2008); (iii) NO<sub>x</sub> concentrations; (iv) ultra-fine particles (range 20–1000 nm) at the Marseille–Longchamp site. Details on the complementary instrumentation at each site can be found in Table S2.

### 2.2 Synthetic dataset

Although the principal aim of this article is to inspect the differences in the methods amongst these European sites, a synthetic dataset comparison was first tackled. The main advantage of this procedure is that it allows the real-world environmental measurements already classified in OA sources to be mimicked so that PMF results can be compared with the incoming synthetic data. We created a synthetic dataset that mimics OA mass spectral analyses of a ToF-ACSM in Zurich. For that purpose, we used source-specific OA mass spectra retrieved from the AMS spectral database (Crippa et al., 2013; Ng et al., 2011b; Ulbrich et al., 2009) and OA source concentration time series generated by the air quality model CAMx (Comprehensive Air Quality Model with Extensions) previously published by Jiang et al. (2019). Details are described in Sect. S1. The dataset used to calculate the error matrix is that from the Zurich site, which ranges from February 2011 until December 2011. Hence, the same CAMx outcoming time series period was used to generate the concentration matrix. The represented OA sources are HOA, BBOA, SOA from biogenic emissions (SOA<sub>bio</sub>), SOA from biomass burning (SOA<sub>bb</sub>), and SOA from traffic and other anthropogenic sources (SOA<sub>tr</sub>).

The first step for the synthetic dataset creation was to select  $p$  (number of factors), POA, and SOA spectral profiles from the high-resolution AMS spectral database (Crippa et al., 2013; Ng et al., 2010; Ulbrich et al., 2009) and to multiply them by the time series of the same sources from the model output. The error matrix was generated following the same steps as for real-world data, and real-world parameters were used as detailed in the Supplement. For this purpose, the dataset used is that from the Zurich site, which ranges from February 2011 until December 2011. Hence, the same CAMx outcoming time series period was used to generate the concentration matrix. Gaussian noise was subsequently added to the outcoming matrix. The resulting matrices were used as *rolling* and *seasonal* PMF input. Before the comparison to the original factors, several tests, as in the multi-site comparison, were performed to check the quality of the output; these tests included the mass closure test and the scaled residuals profile revision.

Table 1. Participant sites.

Site	Type	Latitude	Longitude	Height (m a.s.l.)	ACSM type	Network	Period
Barcelona – Palau Reial (BCN-PR)	Urban back-ground	41°23′11.48″ N	02°07′05.00″ E	80	<i>Q</i>	ACTRIS, GAW	Sep 2017–Oct 2018
Cyprus Atm. Obs. – Agia Marina Xyliatou (CAO-AMX)	Remote	35°2′19.35″ N	33°3′27.95″ E	352	<i>Q</i>	ACTRIS, GAW	Mar 2015–Jan 2017
Dublin (DUB)	Urban background	53°18′19.08″ N	06°3′4.52″ W	35	<i>Q</i>	ACTRIS, AQ network in Ireland: <a href="http://www.macehead.org/">http://www.macehead.org/</a> (last access: Sep 2022)	Sep 2015–Aug 2017
ATmospheric Observations in liLle (ATOLL)	Suburban	50°36′40.0″ N	03°08′25.4″ E	70	<i>Q</i>	ACTRIS, CARA programme (French AQ network)	Oct 2016–Sep 2017
Magadino (MGD)	Rural	46°9′37″ N	8°56′2″ E	204	<i>Q</i>	GAW	Aug 2013–Oct 2014
Magurele – INOE (INO)	Peri-urban	44°20′52.98″ N	26°1′43.93″ E	93	<i>Q</i>	ACTRIS, GAW	Sep 2016–Sep 2017
Marseille–Longchamp (MRS-LCP)	Urban background	43°18′18.84″ N	5°23′40.89″ E	71	ToF	CARA programme (French AQ network)	Jan 2017–Apr 2018
SIRTA (SIR)	Suburban	48°42′36″ N	2°9′0″ E	163	<i>Q</i>	ACTRIS	Jan 2016–May 2017
Tartu (TAR)	Urban background	58°22′14.16″ N	26°44′5.64″ E	39	<i>Q</i>	National air monitoring station	Sep 2016–Jul 2017

### 2.3 Positive matrix factorisation

The positive matrix factorisation model (Paatero and Tapper, 1994) describes the measured matrix  $\mathbf{X}$  of  $n$  timestamps and  $m$  variables as a product of two matrices,  $\mathbf{G}$  and  $\mathbf{F}$ , plus a residual matrix  $\mathbf{E}$  for a given number of factors  $p$ :

$$x_{ij} = \sum_{k=1}^{n,m} g_{ik} \cdot f_{kj} + e_{ij}. \quad (1)$$

The matrices  $\mathbf{G}$  and  $\mathbf{F}$  can be randomly initialised with a priori information. The model then iterates until the quantity

$$Q = \sum_{i=1}^n \sum_{j=1}^m \left( \frac{e_{ij}}{\sigma_{ij}} \right)^2, \quad (2)$$

where  $\sigma_{ij}$  represents the uncertainties of the input matrix  $\mathbf{X}$ , is minimised with respect to all model variables.

The use of a priori information reduces the rotational ambiguity of the model, consisting of a degeneration of solutions associated with a given  $Q$  value (Canonaco et al., 2013), and it is usually done from the  $a$ -value approach.

This consists of initialising  $\mathbf{F}$  (or  $\mathbf{G}$ ) with reference profiles (or time series) and multiplying them by the percentage of variation  $a$ ,  $a \in [0,1]$ , where 0 and 1 would represent total constraint and freedom, respectively. The Source Finder (SoFi Pro, versions 6.8 and 8.04, Datalystica Ltd., Villigen, Switzerland) applies this algorithm through the multi-linear engine 2 (ME-2) (Paatero, 1999) within the Igor Pro software environment (Wavemetrics, Inc., Portland, OR, USA). SoFi is also a powerful software package for preparing the rolling conditions for the input matrices prior to the PMF algorithm and post-processing the outcomes afterwards.

#### 2.3.1 Seasonal PMF

In order to apply *seasonal* PMF, the input matrix is divided into season-long submatrices, and PMF is applied independently, adjusting the number of necessary factors to the requirements of each subperiod. In order to reach an environmentally reasonable local  $Q$  minimum, the implemen-

tation of constraints on primary organic aerosol (POA) factors has been performed according to the COLOSSAL guidelines for source apportionment (COLOSSAL, COST Action CA16109, 2019) and the protocol from Chen et al. (2022). After unconstrained results exploration, which allowed for some marker identification, constraints based on the  $a$ -value approach were applied to primary OA factors. The systematic exploration of the  $a$ -value space has been performed for each season, with the aim of determining the combination of  $a$  values that maximises the correlations between factors and external correlations and represents an environmentally reasonable OA explanation, hereafter referred to as the base-case solution. The random  $a$ -value ranges and the reference profiles employed can be found in Tables S1 and S3a.

With respect to the synthetic dataset, the 11 months from 2011 data were split into three periods (and not four seasons to avoid running PMF over too short periods): February–May, June–August, and September–December. The real-world Marseille dataset also used the co-located SO<sub>2</sub> time series to force an industry + shipping factor to emerge, as reported in previous studies (Bozzetti et al., 2017; El Haddad et al., 2013). The seasonal averaging of the remaining runs were complemented by bootstrapping to estimate the statistical error of the solution.

Bootstrapping (Efron, 1979) the *seasonal* PMF input together with random  $a$ -value resampling allows for a statistical and rotational uncertainty assessment. The application of a criteria-based selection, which will be deeply explained in Sect. 2.3.2, was also used to discard those runs that did not comply with the user-defined standards. The outcome of this technique consists of  $p$  (number of factors) mass spectra and time series, including their uncertainty assessment, combined season-wise together to obtain period-long OA sources. This might lead to possible factor discontinuity. Moreover, from this approach, source fingerprints are static throughout a whole season and cannot adapt to the OA processes of lifetimes below a meteorological season (i.e. 90 d) but can nevertheless evolve from one season to another.

### 2.3.2 Rolling PMF

*Rolling* PMF runs the model on subsets of the input matrix with a user-defined (window) length in days. Then, the window is shifted by a number of days (also chosen by the user), and PMF is applied again (Parworth et al., 2015). Consequently, many PMF runs are performed in each window length period, so in the post-analysis, one can automatically discard the runs that do not meet certain user-defined criteria (Canonaco et al., 2015). To select the most environmentally reasonable runs, the remaining solutions are averaged to generate the final solution, which will be provided with statistical and rotational uncertainties based on random input resampling (bootstrap) and random  $a$ -value resampling, respectively.

A length of 14 d and a shift of 1 d were used in the current study for the synthetic dataset and for 7 out of the 9 datasets, which is a good compromise between  $Q/Q_{\text{exp}}$  values and the percentage of modelled points, as suggested in Canonaco et al. (2021). Window lengths of 28 d were also assessed, but the correlations to ancillary measurements deteriorated in most of the cases. Exceptions to this rule were the SIRTA and Tartu sites, for which the 28 d window offered better correlations. These window lengths are consistent with the life cycle lengths of atmospheric aerosols (Textor et al., 2006), and their outcomes do not differ significantly. The application of constraints in PMF, as advised in the protocols, consists of setting random  $a$  values within a reasonable range and accepting only the runs that comply with the criteria. This procedure will lead to the selection of  $a$  values that induce more environmentally reasonable solutions and whose average will provide the final number. In some cases, the reference profiles used in *rolling* PMF are those from the *seasonal* solution, as the protocol is flexible regarding this choice. However, this constraint can have an impact on the solution, and in order to identify its implications, the profiles used in each case are detailed in Tables S1 and S3a.

A criteria-based selection was developed to automatically inspect the large number of PMF runs provided by the *rolling* method (Canonaco et al., 2021). This consists of the application of certain criteria to be fulfilled by the PMF outgoing factors. The acceptance or rejection of a run can be dictated by the thresholds retrieved from bootstrapped *seasonal* solutions or, more advisably, from a double-tailed Welch's  $t$ -test hypothesis evaluation with  $p$  values (Chen et al., 2021) chosen by the user (not exceeding 0.05). This procedure allows for factor discontinuity, as one can run PMF for two consecutive numbers of factors and choose a certain criterion upon which to select one more (or less) factor depending on the outbreak or vanishing of a factor marker. The list of criteria is specified in Table S3b for the synthetic dataset and in the respective publications for each real-world site.

### 2.4 SA procedure and dataset homogenisation

A method to compare source apportionment performance, analogous to Belis et al. (2015) while adjusted for our specificities, was developed in this study. The first step consisted of preliminary checks, in which the minimum requirements for solution acceptance, such as the mass closure and reasonability of profiles, must be satisfied. Secondly, the characterisation of discrepancies between methods was addressed in order to confirm the presence or absence of significant differences between *rolling* and *seasonal* PMF. The decision of which method was more suitable for certain dataset particularities was a posteriori based on the quantification of the performance goodness of both methods by means of correlation to external measurements and residual analysis. This flow process was applied to both the multi-site analysis and the synthetic dataset.

All the participants of the multi-site comparison applied the SA protocol to their own datasets, benefiting from the expertise in the previous OA SA studies at their sites. The analysis of the differences between source contribution estimates by both methods was performed for each site individually and overall. The similarity of the time series from one method to the other was assessed not only for each whole dataset but also in a “rolling” fashion, that is to say, by calculating some metrics on the windows of a given number of days with 1 d shifts between windows. This approach allowed for the identification of significant discrepancies between both approaches for the set PMF window lengths (14 d for *rolling*, 90 d for *seasonal*), a feature that was not evident in the whole long-term time series. It also enabled the watching of intra-daily differences by setting period lengths of 1 d.

A detailed study of model residuals was also beneficial to quantify the accuracy of each technique’s performance. Scaled residuals represent the model error ( $e_{ij}$ ) normalised by the uncertainty matrix ( $\sigma_{ij}$ ):

$$\text{Scaled residuals}_{ij} = \frac{e_{ij}}{\sigma_{ij}}. \quad (3)$$

Their  $i, j$  sum has been reported in Paatero and Hopke (2003) to describe a unimodal histogram within a  $\pm 3$  range under good model performance conditions. The output  $Q$  quantity has been compared in both a raw and normalised way. This normalisation aims to deprive the impact of the degrees of freedom that normally depend on the input size and on the number of factors, hence computing the quantity  $Q/Q_{\text{exp}}$ , where

$$Q_{\text{exp}} = m \cdot n - p \cdot (m + n). \quad (4)$$

Then, various PMF runs can be compared in a more fundamental way. The expressions used for the normalisation arrangement have to be adapted to the particular degrees of freedom of each method:

$$\left(\frac{Q}{Q_{\text{exp}}}\right)_{\text{Rolling}} = \frac{Q}{m \cdot n - p \cdot (n + m \cdot n_{14})}, \quad (5)$$

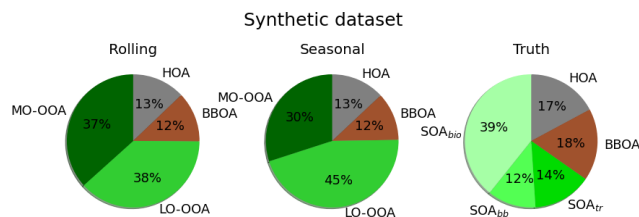
$$\left(\frac{Q}{Q_{\text{exp}}}\right)_{\text{Seasonal}} = \frac{Q}{m \cdot n - p \cdot (n + m \cdot n_{90})}. \quad (6)$$

The parameters  $n_{14\text{d}}$  and  $n_{90\text{d}}$  refer to the number of periods throughout the dataset of 14 and 90 d, respectively.

For the synthetic dataset, the comparison between methods had to consider the error of each. For this purpose, the metric presented in Belis et al. (2015), the uncertainty-normalised root-mean-squared error (RMSE<sub>u</sub>) was used:

$$\text{RMSE}_u = \frac{\sqrt{\frac{1}{n} \sum_{i=1}^n (m_i - r_i)^2}}{2u}. \quad (7)$$

In this expression,  $m$  represents the modelled values,  $r$  the reference values, and  $u$  the mean uncertainty of the model.



**Figure 1.** OA apportionment results for *rolling* and *seasonal* methods and *truth* output.

### 3 Results and discussion

#### 3.1 Synthetic dataset

This section aims to assess the quality of the outcomes of the *rolling* and *seasonal* PMF methods. Relying on synthetic ToF-ACSM data offers the opportunity to compare the PMF outputs to the *truth*, which is not available for real-world measurements. We focus here on the OA sources’ (factors’) mean concentration and their temporal variability as well as the mean chemical composition and their temporal variability.

Regarding the OA apportionment vs. the input OA scatterplot, Table S4 presents the fitting coefficients for several resolutions, with no substantial difference between methods. Figure 1 shows the relative factor contributions to the apportioned OA for both methods. The POA factors do not differ substantially between the SA methods, but they are underestimated with respect to the *truth* (25 % of OA in *rolling* and *seasonal*, 35 % in *truth*). Also, whilst the LO-OOA-to-MO-OOA ratio is nearly 1 in the *rolling* case, it presents a much fresher secondary aerosol for the *seasonal* (1.5). Compared to the *truth*, PMF using a priori information on POA’s chemical composition (HOA, BBOA) underestimates POA and overestimates SOA.

Figure 2 presents the time series, diel cycles of the *truth*, and *rolling* and *seasonal* methods as well as the scatter plots between the corresponding PMF time series. In time series and diel plots, it is noticeable that SOA is overestimated by PMF at the expense of POA (Fig. 2c). Squared Pearson correlation coefficients and slopes were similar for both *rolling* and *seasonal*, respectively, for HOA (0.89, 0.88) and OOA (0.95, 0.97) but not for BBOA, which *seasonal* resolves better (0.55, 0.72). Welch’s  $t$  tests between *rolling* and *seasonal* time series rejected the similarity of all factors’ concentrations. This test, applied to both methods against the *truth*, also rejected the hypothesis of significantly similar means, discarding a good method representation of *truth* results. This could be explained by the fact that *truth* profiles are static, and the methods were trying to adjust to moving fingerprints, and the anchor profiles might have influenced the results. For *rolling* and *seasonal* PMF results, the uncertainty-biased RMSE (RMSE<sub>u</sub>, Eq. 7) values are 1.10, 0.90 for HOA; 0.95, 1.98 for BBOA; and 0.05, 0.33 for

SOA, respectively. Values under 1 represent values within the range of PMF uncertainty and are therefore acceptable values, which is the case for all except the *rolling* HOA and *seasonal* BBOA. These exclusions could be explained by two, non-exclusive hypotheses: (i) the dissimilarity between methods and *truth* is large; and (ii) the uncertainties of the methods might be underestimated. In all cases except for HOA, *seasonal* presents higher RMSE<sub>u</sub> and therefore a worse fit to the *truth*. Besides, the statistical Welch's *t* test was performed on the synthetic dataset PMF results, testing the null hypothesis of statistically similar means with different variances.

The difference in the Pearson squared correlation coefficients between factors and their potential markers is shown as a histogram in Fig. S1 for each of the methods. The *truth* results show the worst correlation with ancillary measurements compared to modelled PMF. *Rolling* and *seasonal* results are very similar, although these correlations seem greater for *rolling* POA factors and for *seasonal* SOA factors. Slightly higher correlation coefficients were found for *rolling* in transition periods (i.e.  $\pm 7$  d before and after the change of seasons): 0.88 and 0.77 for HOA vs. BC; 0.74 and 0.65 for HOA vs. NO<sub>x</sub>; 0.52 and 0.52 for OOA vs. NH<sub>4</sub>; and 0.07 and 0.07 for MO-OOA vs. SO<sub>4</sub>.

Profiles (Fig. 3a) did not show remarkable discrepancies between PMF methods, but nonetheless, these could be noticed when compared to the *truth* profiles. However, the cosine similarity method revealed high similarity of both methods to synthetic profiles (1.00 and 1.00 for HOA, 0.91 and 0.91 for BBOA, and 1.00 and 1.00 for SOA for *rolling* and *seasonal* PMF, respectively). However, it is noteworthy that both HOA's and BBOA's chemical compositions were constrained. Model HOA profiles were very similar to the *truth*, except for the lower  $m/z$  44 and higher  $m/z$  57 of the *truth*, and other HOA markers regarding models. Modelled BBOA presented significant differences between the *truth* and modelled profiles; the *truth* profiles contained a lower  $m/z$  44-to- $m/z$  43 ratio, the lower influence of HOA markers, and much higher  $m/z$  60 and  $m/z$  73 BBOA tracers. Hence, modelled BBOA contained a higher proportion of other OA factor markers and lower of their own, meaning modelled profiles might have resulted in less cleanliness than the true ones. SOA PMF modelled profiles contained lower  $m/z$  43 and  $m/z$  44 than the *truth* profiles, although the rest remained very alike. In short, PMF results present a BBOA factor with more SOA and HOA influence as the main profile. The underestimation of POA is therefore understood to be due to a poorer modelisation of the key source identifiers, leading to a less pure profile and hence, a lower mass apportionment compared to *truth*.

The influence of reference profile constraints might have enhanced the misattribution of the profiles – for example, imposing  $m/z$  44-to- $m/z$  43 ratios led to a significant difference in the degree of oxidation solution with respect to *truth*. Nevertheless, constraining profiles has provided more accu-

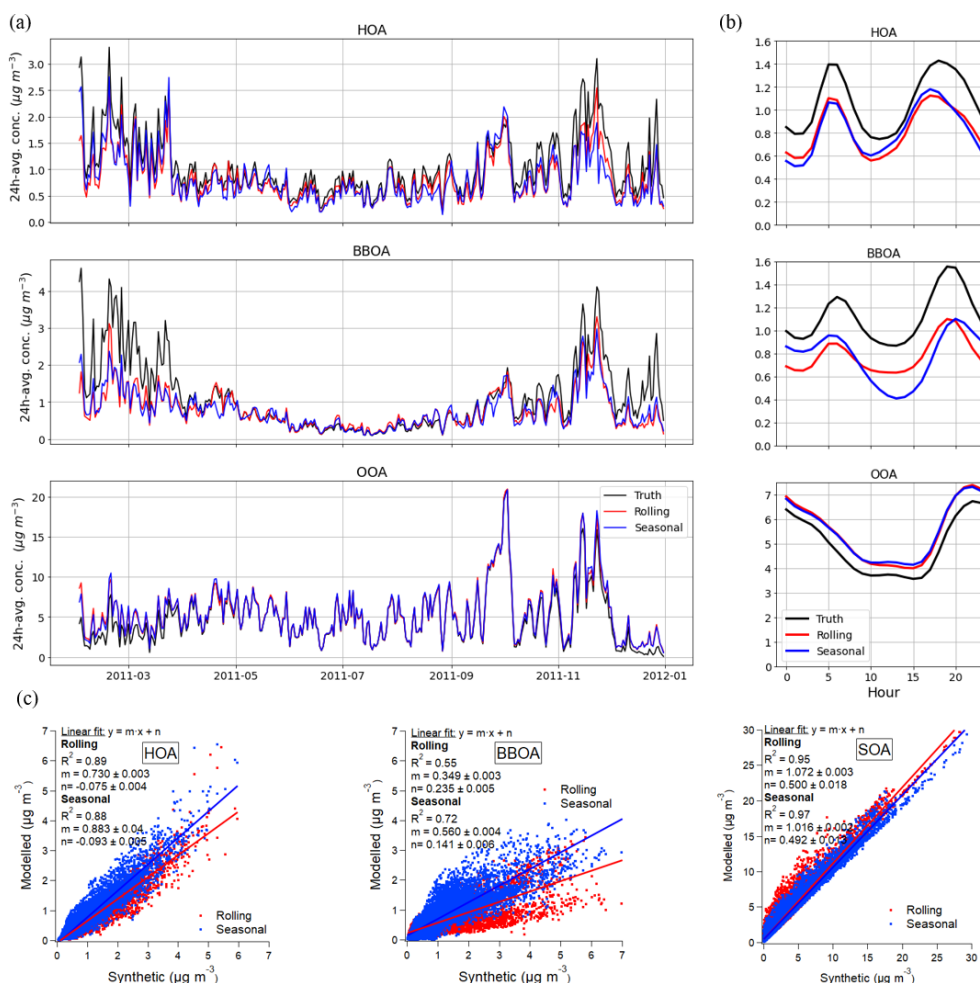
rate solutions than unconstrained setups, as shown in Fig. S2. These plots show how *seasonal* constrained PMF launches always present higher similarity to *truth* in terms of key ions ratios. Moreover, OA sources of unanchored runs were less robust due to lower reproducibility along the accumulation of runs. By extension, rolling results are expected to reproduce the same results, as it has been proven that both techniques' outcomes converge sufficiently.

The adaptability of the models can be assessed from Fig. 3b, where the 60/55 vs. 44/43 (which are proxies for the BBOA–HOA differentiation and the SOA oxidation, respectively) is plotted for the *truth* and for both methods. Here we use  $m/z$  55, since it is known to be a key marker for HOA. *Rolling* is shown to be a continuous time series, as the profiles for this method are time dependent, whilst the ratios for *seasonal* only vary from season to season. In HOA, the modelled points circle the actual *truth* and anchor profile points (which are similar or equal), but this is not the case for BBOA, in which the *rolling* and *seasonal* points are near the anchor profile but distant from the *truth*. This implies that the anchor profile, which was selected ignoring the *truth* profile characteristics, plays an important role in terms of adaptability to the actual solution. Overall, even for OA sources with nominally constant chemical composition (here HOA, BBOA), the factors resolved by PMF exhibit a varying chemical composition. Therefore, caution is required in interpreting the variability in sources of chemical variability resolved by *rolling* PMF. Oppositely, the SOA profiles, as they were unconstrained, can be compared more fairly. Both the *rolling* and *seasonal* dots are within the *truth* markers, except for some points of high 60/55, for which the highest disparity to *truth* is found for *seasonal*. This suggests a poorer PMF OOA's chemical composition profile apportionment, which in turn, might be influenced by the POA anchoring deficiencies.

The benefits of the continuity of the *rolling* profiles are reflected in time series, as can be seen in Fig. 3c, in which the behaviour of *seasonal* points is unrealistically drastic depending on the season. The profile adaptability of the *rolling* method represents a more resolute approach to positively representing the *truth*. Contrarily, the *seasonal* approach – although it can be plotted for each timestamp, as SOA is the sum of two OOAs – can only vary in lines of an equal 44/43 ratio, as the profiles are constant all through a season. In short, it can be stated that, as opposed to *seasonal* PMF or in general batch-wise PMF analysis, *rolling* PMF offers the potential to interpret changes (e.g. seasonal) in an OA sources' chemical composition, but the anchor profile selection has been shown to generate significant discrepancies when compared to the *truth* for both methods, requiring caution in interpreting such variability.

The SA method used has a severe impact on model-scaled residuals. Figure S3a shows the histogram of the scaled residuals for all the resolutions. In all cases, the *rolling* PMF histogram is significantly sharper, more centred to zero. Also,





**Figure 2.** Rolling, seasonal, and truth (synthetic dataset original values) (a) time series (in hourly averages for the sake of clarity), (b) diel profiles, and (c) scatter plots.

the same effect is visible in the transition periods (Fig. S3b). Regarding  $Q$  values, the *rolling* value (3 838 356) is lower than the *seasonal* value (24 665 377), as expected, due to the higher extent of degrees of freedom of the former method.  $Q/Q_{\text{exp}}$  values, computed from Eqs. (5) and (6), are 7.08 and 37.58, respectively, for *rolling* and *seasonal* PMF. The fact that, when normalising by the model-specific degrees of freedom, the  $Q/Q_{\text{exp}}$  is lower for *rolling* than for *seasonal* leads to the conclusion that the minimisation of uncertainty-weighted errors is better achieved by the *rolling* method.

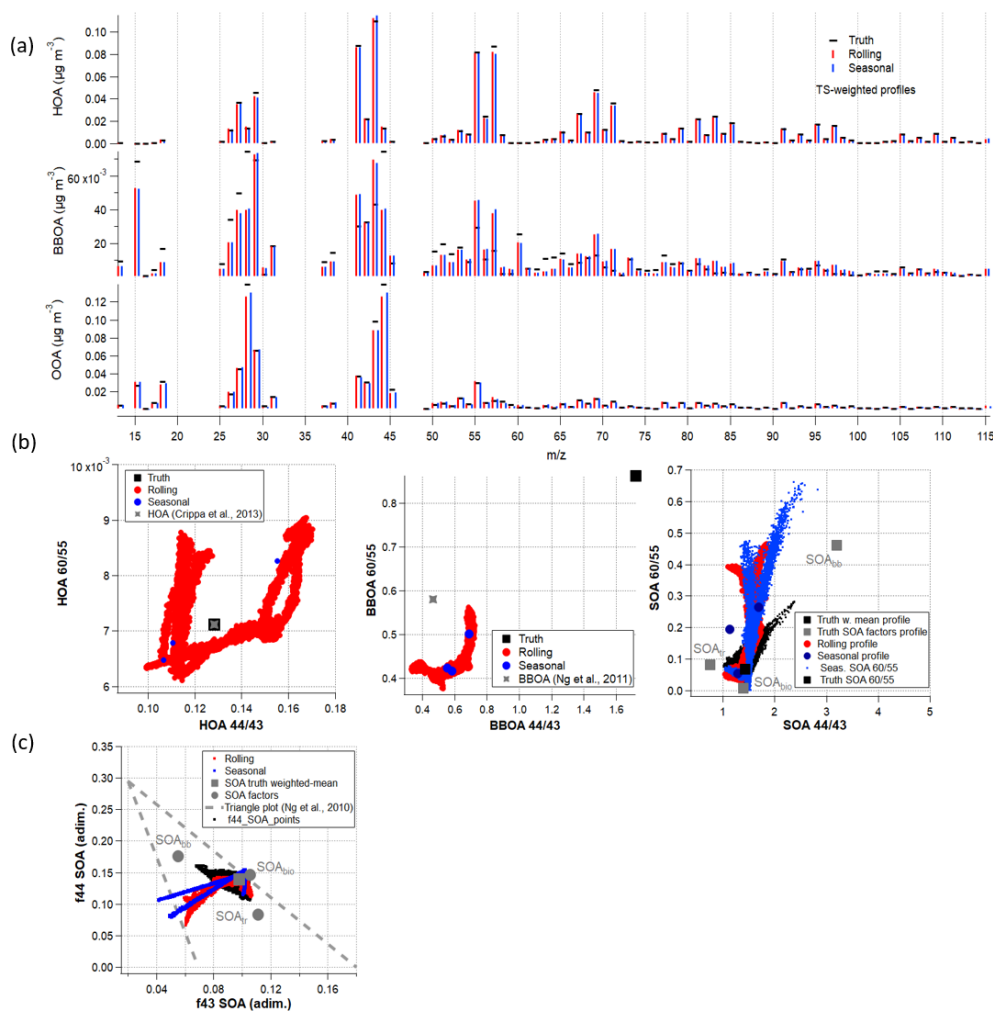
### 3.2 Multi-site comparison

#### 3.2.1 Preliminary tests

Preliminary tests were performed to check the consistency of the reported results as well as the actual difference between the methods reported. An important performance metric is the closure of the OA mass – that is to say, the difference between the sum of all OA factor concentrations vs.

the input mass. Table S4 provides the fit statistics of the input OA vs. the outcome OA for all the sites and four different time spans (the whole period, a season, a fortnight, and a day). All squared correlation coefficients are higher than 0.88, and slopes are within the 0.92–1.09 range. This ensures the quality of the PMF performance at all time resolutions and for both methods. A closer inspection of the table shows slightly higher correlation coefficients and slopes closer to 1 for *rolling*.

In order to confirm or reject the existence of systematic disparity between both methods, a two-tailed Welch's  $t$  test was performed under the null hypothesis of the time series having statistically similar expected values. In Table S5, all cells marked represent the runs that reject the null hypothesis, i.e. for which the factors retrieved from *rolling* and *seasonal* are not statistically equal ( $p$  values over 0.05). The row “all” refers to the concatenation of all the dataset time series. Apportioned OA presents the highest acceptance of the hypothesis rate, implying that the global apportionment



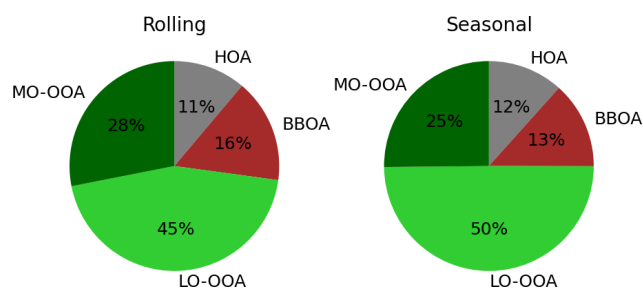
**Figure 3.** Synthetic dataset solution (a) profiles; (b) time-dependent profile variability of ratios 60/55 vs. 44/43; (c) triangle plot of  $f_{44}$  vs.  $f_{34}$  for *rolling* PMF (red), *seasonal* PMF (blue), and *truth* (black).

means are not significantly different. The factors with higher rejection rates are LO-OOA, MO-OOA, and HOA, in this order. OOA factors, as they are unconstrained, might be rather sensitive to source outbreaks or variations, which could have been caught or not by one model, although their sum (OOA) remains coherent. Period-long figures get the highest rejection rates, which decay rapidly from lower to higher resolutions, meaning the seasonal and fortnightly averages are still high despite their rapid resolution; on the other hand, for the daily resolution, this rate is very low. This fact highlights that the methods present significant differences with regard to means in intermediate resolutions.

Figure S4 compares the relative difference of the *rolling* minus *seasonal* concentrations for each factor in the all-sites ensemble. The factors with higher errors are MO-OOA and LO-OOA, tilted to positive values – that is, resulting in higher concentrations for *rolling*. This is probably related to the lack of anchors, which promotes higher freedom and hence, higher difference between methods. Also, BBOA

presents significant positive whiskers, but as mean concentrations in Fig. 1 are equal, we suspect these are linked to sporadic high concentration outbreaks, which might only have been caught by the *rolling* method. Besides, the other factors are not significantly different from zero.

The pie charts in Fig. 4 show the amount of mass apportioned by the main OA sources in all datasets. These pies do not account for site-specific sources; they present the relative contribution of the all-sites ones scaled to account for the 360 degrees. OA is mainly driven by secondary organic aerosols in both cases, although the ratio of fresh-to-aged aerosol contributions – that is, LO-OOA over MO-OOA – is much higher for *rolling* (0.62) than for *seasonal* (0.54). The ratio of POA over SOA is higher for *seasonal* than for *rolling* (0.58 and 0.37, respectively), and the ratio of BBOA over HOA is considerably different (1.17 and 1.45, respectively). The fact that wood burning BC exceeds fossil fuel BC is consistent with the average ratio of 3.1 for  $\text{BC}_{\text{wb}}$  and  $\text{BC}_{\text{ff}}$ , implying that PMF reproduces this relation. Hence, *rolling*



**Figure 4.** Pie charts of the mean concentrations of the main factors for the ensemble of all sites.

describes a more oxidised SOA, which is less prevailing than that of *seasonal*. In both, POA is governed by the biomass burning OA. Figure S5 shows the individual apportionment pies, in which the same trends can be generally recognised. In general terms, these results do not coincide with the ones from the synthetic dataset, in which the POA/SOA and LO-OOA/MO-OOA ratios were, respectively, equal and higher for *rolling*.

Figure 5 shows both the monthly and diel cycles of the *rolling* minus *seasonal* concentrations of the ensemble of sites for the main factors. In general terms, the intra-year variation is not remarkable, as all the boxes are mainly crossing the zero line. Besides, the differences between mean and median could indicate the adaptability to spiky events. The fact that HOA and BBOA are remarkably different throughout the whole period coincides with the aforementioned Welch's *t* tests. Moreover, the mean for HOA in January and December and for BBOA in July and August are positively set beyond the boxes, which could imply that the most extreme events are better captured by the *rolling*. This fact reinforces the hypothesis of a more precise capture of intra-month events. SOA factors present fewer clear trends, although an alternate sign between warm and cold months can be recognised. Figure S6 depicts the behaviour of the remaining factors, which are nearly zero except for 58-OA, which is significantly negative in summer, and SHINDOA, which alternates from positive to negative from summer to winter. In the case of 58-OA, this indicates a summertime under- or overestimation of one of the methods, and for the SHINDOA, a differing capturability of events along the year.

Regarding diel cycles (Fig. 5), the differences are evident in HOA and BBOA at night, implying that this is where the mixing between POA sources is aggravated. The SOA factors reveal that one of the methods overestimates the other throughout the daily cycle: *rolling* is greater for MO-OOA and OOA and lower for LO-OOA. Whilst these differences do not have an impact on the Welch's *t* test for LO-OOA, they do for the rest, even for HOA, for which they are not very uneven, probably due to the compensation of differences while averaging. Figure S6 shows similar behaviour for both methods in all the factors except for the WCOA,

PCOA, and CCOA, which present higher differences at night. *Seasonal* concentrations, though, are remarkably higher for 58-OA throughout the period or daily cycle, somewhat superior in the COA 8h peak, and inferior in the SHINDOA afternoon. While these results do not have an impact on the *p* value for the Barcelona–Palau Reial and Magadino sites, it does for the Marseille–Longchamp site.

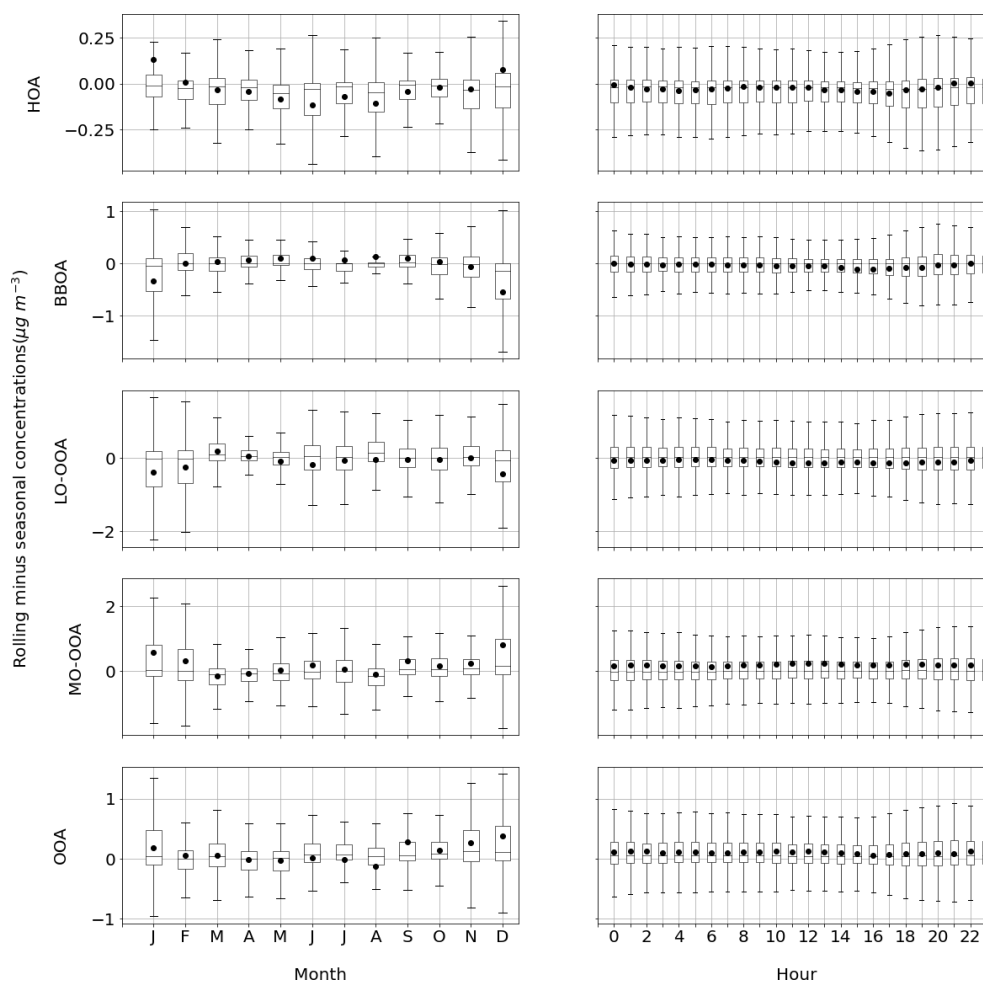
### 3.2.2 PMF goodness evaluation

#### Correlation with ancillary measurements

In order to assess the quality of each PMF method outcome, the correlation of factors with their potential markers was monitored from a single and global perspective. The pairs of variables compared were: HOA and BC<sub>ff</sub>, HOA and NO<sub>x</sub>, BBOA and BC<sub>wb</sub>, MO-OOA and SO<sub>4</sub><sup>2-</sup>, and OOA and NH<sub>4</sub><sup>+</sup>. SHINDOA was compared to ultrafine particles with diameters of 10–20 nm coming from shipping or industry, differentiated according to Chazeau et al. (2021) and Rodríguez and Cuevas (2007). The correlation of LO-OOA vs. NO<sub>3</sub><sup>-</sup> has been excluded in this study due to the plentiful sources of NO<sub>3</sub><sup>-</sup>; besides, organonitrates would hamper the traceability of LO-OOA from this compound. This analysis has not been extended for the rest of the OA sources due to the lack of appropriate tracers available.

Figure 6 presents the Pearson squared correlation coefficient for all the pairs of markers and factors retrieved from *rolling* and *seasonal* PMF. Even though these marker time series are not deprived of errors, the hypothesis is that better agreement leads to better adaptation of the model to the OA source emitting these tracers. Overall, the *rolling* boxes are centred to higher correlation values than the *seasonal* ones, but their whiskers always reach the maximum value of 1 in both cases. The difference between methods is small, since medians do not differ by more than 0.05; however, the *seasonal* performance underscores these correlations slightly. This finding would support the hypothesis of the superior performance of the *rolling*, although HOA is evenly characterised in both methods, which is consistent with the great similarity in the apportionment of OA shown in Fig. 4. The histogram for the difference of Pearson squared correlation coefficients is plotted as a histogram for all sites in Fig. S7. Positivity in this graph reflects better *rolling* results matched with co-located measurements, and the histogram spreads the range of correlations. The amount of shoulders in the right half of these histograms is higher than those in the left, which implies systematic improvement of the *rolling* method with respect to *seasonal* in terms of correlation with ancillary measurements.

Periods of transition from one season to another are strategically relevant for this comparison, since the *seasonal* method, due to its profile staticity definition, could yield to discontinuities in the time series of the different components. The change of OA factors spectra for *rolling* is smooth; there-



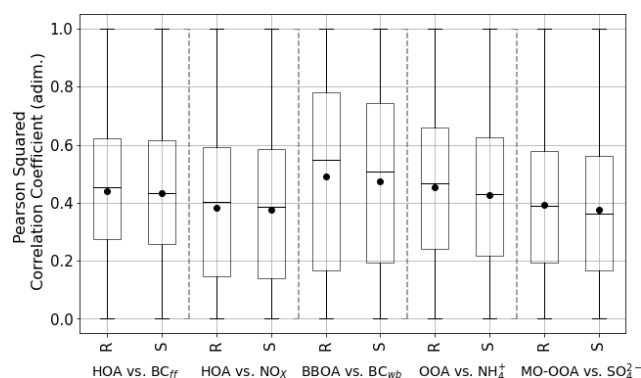
**Figure 5.** Boxplots of *rolling minus seasonal* factor absolute concentrations (in  $\mu\text{g m}^{-3}$ ) per month and hour. Boxes show the Q1–Q3 range with the median (horizontal line) and the average (full circles); whiskers extend up to the range of the data.

fore, no abrupt changes should be expected in the season edges. Moreover, the *rolling* technique is capable of introducing factors depending on criteria compliance; therefore, their concentration edges are not as sharp as they would be for the *seasonal* PMF. This is the case for BBOA appearance in the cold months in Barcelona–Palau Reial and Marseille–Longchamp, and the 58-OA outbreak after the Q-ACSM filament replacement in Magadino. From these premises, one could expect to find better correlation coefficients relating to factors and their markers for the *rolling* method, which could better represent these periods. Table S6 shows the correlation of the OA factors and their markers for these periods only, both for the *rolling* and *seasonal* PMF. In all cases, the differences between methods are not extensive. However, it can be seen how the “whole” dataset figures are always greater for *rolling* than for *seasonal*. This finding supports the conjecture that the *seasonal* method presents greater difficulty in representing the edges of the seasons. The relevance of this conclusion is to be considered especially in the datasets in

which the number of days near season changes is important due to data gaps.

### Model residuals

Figure 7 shows the normalised scaled residuals distribution for both methods in a concatenated dataset including all the sites. Given that the uncertainty matrix was the same for both techniques, scaled residuals reflect the capacity of each technique to apportion the quantity of OA most similar to that which was entered as input. Boxplots show a tendency towards negative values for both methods, implying a systematic bias towards the overestimation of the input matrices. *Seasonal* errors present a higher spread and lower mean and medians; hence, *seasonal* results are less accurate and precise than those from *rolling*, overall. However, the span of both distributions does not exceed the  $\pm 3\sigma$  threshold in any of the cases, meaning the results are acceptable for both techniques. Figure S8 shows the same plot for each of the participant sites. In general, the *rolling* histograms are more centred

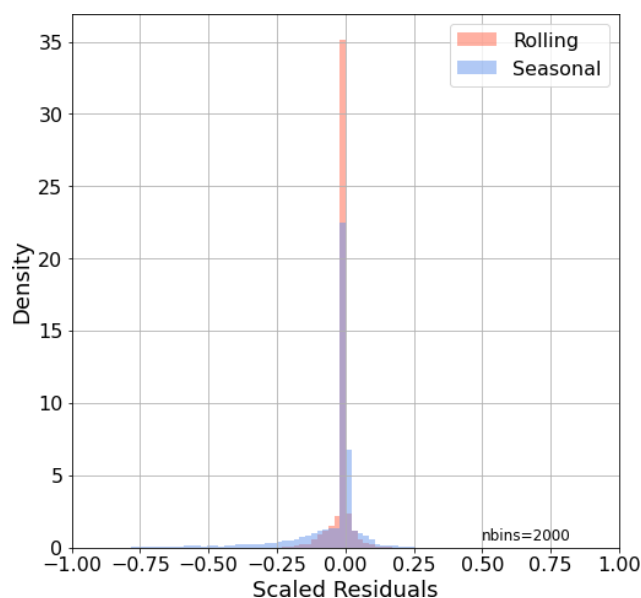


**Figure 6.** Rolling (R) and seasonal (S) boxplots of the Pearson squared correlation coefficient of each OA source with its respective markers for all sites.

to zero, and their sharpness is higher with respect to *seasonal* distributions. An exception to this behaviour is Marseille–Longchamp, which presents negatively shifted distributions probably related to the model’s difficulty in differentiating between BBOA and LO-OOA.

Scaled residuals for the season transition periods are presented in Fig. S9. Both histograms extend largely beyond the  $(-3, 3)$  domain, implying that both methods struggle in this kind of period; however, the *seasonal* distribution of scaled residuals is much wider than that of *rolling*. Also, in the zoomed  $(-3, 3)$  range, *seasonal* results seem to present a wider distribution. Distribution shoulders are present in both – negative in *rolling* and positive in *seasonal* – indicating *rolling* overestimation and *seasonal* underestimation of input concentrations. These findings would imply that, even if the methods provide a substantial error in the transition periods, the *rolling* better captures the season change due to its profile adaptability.

Regarding  $Q$  values, the differences between techniques are presented in Table 2. Unweighted  $Q$  values show a clear pattern on lower values for *rolling* PMF, except for one site. The SIRTA datasets were treated by two different users, which might have led to different PMF steps and unreliable results. The generally greater minimisation of  $Q$  performed by the *rolling* PMF method can be explained by the major quantity of runs performed compared to *seasonal* PMF because of the proper definition of the method. By depriving the  $Q$  of the degrees of freedom effect, as shown in Eqs. (5), (6), the minimisation of both methods is signified. The trend generally points to lower figures for the *rolling* method, but whilst the minimisation of the unweighted  $Q$  was an expected fact, the implicit error reduction cannot be ensured within a theoretical frame. However, the majority of sites (excluding the aforementioned SIRTA) show lower  $Q/Q_{\text{exp}}$  values for the *rolling* method.



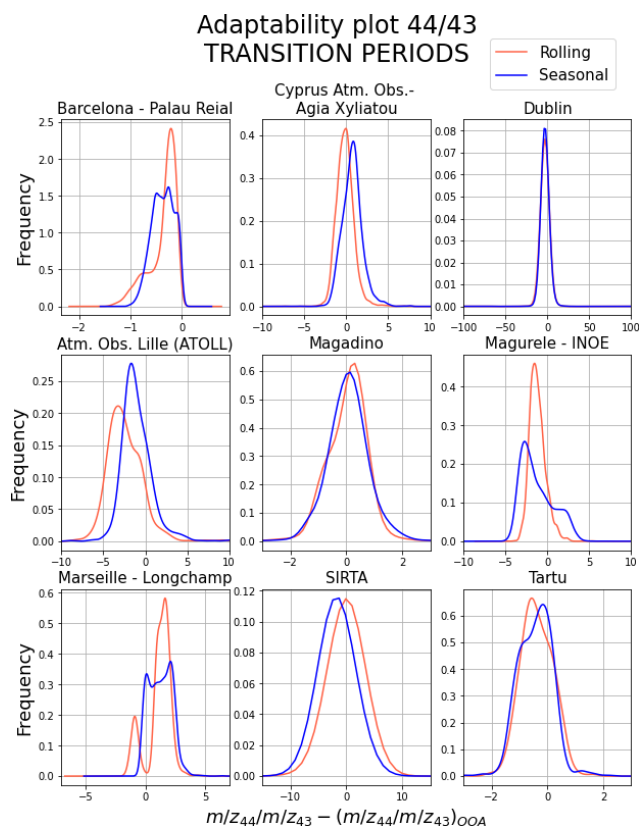
**Figure 7.** Normalised scaled residuals histogram for both PMF techniques.

**Table 2.**  $Q/Q_{\text{exp}}$  values for *rolling* and *seasonal* solutions. Bold figures represent the lowest value in the *rolling*–*seasonal* comparison.

$Q$	Raw		Normalised	
	Rolling	Seasonal	Rolling	Seasonal
BCN – PR	<b>481 008</b>	1 766 588	<b>0.35</b>	1.14
CAO – AMX	<b>57 337</b>	5 101 949	<b>0.04</b>	2.87
DUB	<b>1 031 616</b>	1 261 451	<b>1.14</b>	1.19
ATOLL	<b>465 480</b>	477 145	0.84	<b>0.69</b>
MGD	<b>8 463 251</b>	3 117 660	<b>0.75</b>	2.46
INO	<b>6 138 684</b>	25 404 272	<b>4.58</b>	17.24
MRS – LCP	<b>57 337</b>	5 101 949	17.24	<b>2.87</b>
SIR	558 044	<b>44 965</b>	0.47	<b>0.10</b>
TAR	<b>82 742</b>	152 343	0.59	<b>0.34</b>

### Adaptability tests

Adaptation tests were designed to inspect how much the methods comply with the input data. One of the main concerns to assess is the adaptability of the output profiles to short-lifetime events (order of magnitude of days), as it is the hypothesis onto which the *rolling* PMF is based. For this purpose, the check was based on the difference between main ion ratios, calculated from input values and the apportioned amounts of these ions by OOA factor profiles for both methods, e.g.  $(m/z44/m/z43)_{\text{input}} - \text{OOA } (m/z44/m/z43)$  Rolling or Seasonal. This can be seen in Fig. S10 in a time-series form for each site. Because  $m/z44$  and  $m/z43$  are also part of POA profiles, one should not expect to find a perfect match between the raw and the OOA profile ratios but rather a qualitative idea of how well the profiles adapt to the degree



**Figure 8.** Kernel density estimation of the histograms of the subtraction of the  $m/z$  44-to-43 ratio from the raw (from input matrices) time series data minus the apportioned quantity in profiles. These plots only contain those time lapses among the change of season (transition periods).

of aerosol ageing. In these plots, generally the *rolling* profile variation seems to adapt better than *seasonal*, which is a straight line along a season. Under the same logic, Fig. 8 shows the site histograms of the  $(m/z_{44}/m/z_{43})_{\text{input}} - \text{OOA}$  ( $m/z_{44}/m/z_{43}$ ) Rolling or Seasonal values only for periods around the change of season, which have been proven to be tricky for the PMF model.

Figure S9 shows, in general terms, how the *rolling* adapts to the main 44-to-43 trends, whilst *seasonal* can only present a single value for a whole season. Even though the *rolling* or *seasonal* SOA and the input time series are not expected to match perfectly, the main features of the variability are usually caught by the *rolling*. By taking a look only at the transition periods in Fig. 8, the tendency is that the difference between the input ratio and the *rolling* ratio is closer to zero or sharper around it than with *seasonal*. These qualitative appreciations bolster the aforementioned conclusion that *rolling* adapts the SOA profiles to specific singularities of the input time series, thus generating a more accurate solution.

## 4 Conclusions

The present study aimed at performing a comprehensive comparison between the two methodologies of fine organic aerosol (OA) source apportionment through the positive matrix factorisation (PMF) model: *rolling* and *seasonal* PMF.

The synthetic dataset *rolling* and *seasonal* outputs assessment has been rather fruitful for this comparison. The main highlight of this approach is that the modelled sources could be compared to the “*truth*” ones – that is, the OA sources chosen artificially during the dataset tailoring. Contrasting PMF results against the *truth* highlighted the model’s overestimation of SOA and underestimation of POA (in the case of using a priori information on POA’s chemical composition) for both *rolling* and *seasonal* and different degrees of SOA oxidation between methods. Nevertheless, the correlation of *rolling* and *seasonal* with the *truth* time series and profiles show very similar results in terms of concentrations. The temporal variability of OA sources’ chemical composition has been shown to oscillate, even for POA components with temporally invariant chemical composition, and to be severely impacted by the selection of the profile anchors, as it differed significantly from the *truth* results when the anchor was significantly different to the *truth* profile. However, the use of profile constraints still provided solutions closer to the *truth* than unconstrained PMF. Besides, the *rolling* method has been proven to give a more sensitive representation of the continuous OA fingerprints variation. Scaled residuals minimisation also supported that the *rolling* solution was mathematically superior to *seasonal*.

The following multi-site comparison pretends to contrast both PMF methods in real-world datasets treated homogeneously under Chen et al.’s (2022) protocol to observe general performance trends. The *rolling* method generally presents a comparatively similar proportion of primary OA (POA) and a secondary OA (SOA) of a lower oxygenation degree, i.e. the ageing state. The double-tailed Welch’s *t* test showed that the narrower the window of inspection, the higher the differences between factors retrieved from one method to the other. Moreover, towards weekly or daily periods, SOA factors differ more than POA factors. This fact is likely due to the absence of constraints for the SOA factors during PMF. Contrastingly, POA factors are more dissimilar period-wise. The ratio of BBOA to HOA differs considerably from *rolling* to *seasonal* (1.45 and 1.17, respectively) for the ensemble of sites, but in any case, it is over 1, as the ratio of  $\text{BC}_{\text{wb}}$  to  $\text{BC}_{\text{ff}}$  suggests.

In general terms, *rolling* results correlate better with ancillary measurements than those from *seasonal* for almost all of the considered external datasets at all sites. This is particularly true in the days surrounding the change of season, in which the *seasonal* profiles change drastically from one time point to the following. Model residuals also point to a better minimisation for the *rolling* PMF, although regarding scaled residuals, both methods comply with the  $(-3, 3)$  range ad-

vised by the protocol. The time series of key ions also quantitatively pointed to a better adequation of the *rolling* SOA profiles to the oxygenated OA key ions. Finally, the errors also proved to be more stable for the *rolling* method, while it should be noted that the individual sites' discrepancies from the overall trends have not been discussed in this study.

Overall, these results confirm the hypothesis that the *rolling* PMF can be considered more accurate and precise, globally, than the *seasonal* one, although both meet the standards of quality required by the source apportionment protocol. Moreover, the *rolling* method was already recognised to involve less user subjectivity and computational time as well as being more suitable for long-term and evolving SA analysis, such as semi-automated online SA. This study, therefore, promotes the acceptance of this novel *rolling* method as an improved approach suitable for source apportionment studies. An additional conclusion stemming from this comparison is that the selection of anchor profiles strongly influence the OA factors, so local reference profiles are encouraged to minimise this impact.

**Code availability.** The codes used for this comparison can be found in <https://doi.org/10.17632/nd79y8mpg3.1> (Via, 2022b).

**Data availability.** All data used in this study can be accessed at <https://doi.org/10.17632/dsfty2m7y.2> (Via, 2022a).

**Author contributions.** MV: conceptualisation, data curation, formal analysis, investigation, methodology, software, validation, visualisation, writing – original draft preparation, writing – review and editing. GC: conceptualisation, data curation, formal analysis, investigation, methodology, software, validation, writing – review and editing. FC: conceptualisation, investigation, methodology, software, supervision, validation, writing – review and editing. KRD: conceptualisation, data curation, formal analysis, funding, investigation, methodology, project administration, software, supervision, validation, writing – review and editing. BC: data curation, formal analysis, investigation, writing – review and editing. HC: data curation, formal analysis, investigation, writing – review and editing. JJ: methodology, software. HK: data curation, formal analysis, investigation, writing – review and editing. CL: data curation, formal analysis, investigation, writing – review and editing. NM: funding, project administration. CM: data curation, formal analysis, investigation, writing – review and editing. CO: conceptualisation, funding, project administration, supervision, writing – review and editing. JO: data curation, formal analysis, funding, project administration, supervision, writing – review and editing. J-EP: conceptualisation, funding, project administration, supervision, writing – review and editing. mp: data curation, formal analysis, investigation, writing – review and editing. VR: data curation, formal analysis, funding, methodology, project administration, writing – review and editing. JS: funding, project administration, writing – review and editing. JGS: conceptualisation, formal analysis, methodology, software, validation, writing – review and editing. LS: data cura-

tion, formal analysis, investigation, writing – review and editing. JV: data curation, formal analysis, funding, investigation, writing – review and editing. YZ: data curation, formal analysis, investigation, writing – review and editing. OF: conceptualisation, funding, project administration, supervision, writing – review and editing. ASHP: conceptualisation, funding, methodology, project administration, resources, supervision, writing – review and editing. AA: conceptualisation, funding, methodology, project administration, resources, supervision, validation, writing – review and editing. MCM: conceptualisation, data curation, formal analysis, funding, investigation, methodology, project administration, resources, supervision, validation, writing – review and editing.

**Competing interests.** The contact author has declared that none of the authors has any competing interests.

**Disclaimer.** Publisher's note: Copernicus Publications remains neutral with regard to jurisdictional claims in published maps and institutional affiliations.

**Acknowledgements.** IDAEA-CSIC is a Centre of Excellence Severo Ochoa (Spanish Ministry of Science and Innovation, Project CEX2018-000794-S). The authors gratefully acknowledge the Romanian National Air Quality Monitoring Network (NAQMN, [https://www.calitateaer.ro/public/home-page/?\\_\\_locale=ro](https://www.calitateaer.ro/public/home-page/?__locale=ro), last access: September 2022) for providing NO<sub>x</sub> data.

**Financial support.** This research has been supported by the Generalitat de Catalunya (grant no. AGAUR 2017 SGR41), the European Cooperation in Science and Technology (grant no. COST Action CA16109 COLOSSAL), the Ministerio de Ciencia, Innovación y Universidades (CAIAC, grant no. PID2019-108990RB-I00 and FEDER, grant no. EQC2018-004598-P), the Horizon 2020, the Ministry of Education and Research, Romania (grant nos. PN-III-P1-1.1-TE-2019-0340 and 18PFE/30.12.2021, 18N/2019), the Agence Nationale de la Recherche (grant no. PIA, ANR-11\_LABX-0005-01), the Conseil Régional Hauts-de-France (CLIMIBIO grant), the Ministère de l'Enseignement Supérieur et de la Recherche (CARA grant), the Environmental Protection Agency (AEROSOURCE, grant no. 2016-CCRP-MS-31), the Department of the Environment, Climate and Communications (AC3 network grant), and the Schweizerischer Nationalfonds zur Förderung der Wissenschaftlichen Forschung (SAMSAM, grant nos. IZCOZ9\_177063 and PZPGP2\_201992).

We acknowledge support of the publication fee by the CSIC Open Access Publication Support Initiative through its Unit of Information Resources for Research (URICI).

**Review statement.** This paper was edited by Mingjin Tang and reviewed by three anonymous referees.

## References

- Amato, F., Alastuey, A., Karanasiou, A., Lucarelli, F., Nava, S., Calzolari, G., Severi, M., Becagli, S., Gianelle, V. L., Colombi, C., Alves, C., Custódio, D., Nunes, T., Cerqueira, M., Pio, C., Eleftheriadis, K., Diapouli, E., Reche, C., Minguillón, M. C., Manousakas, M.-I., Maggos, T., Vratolis, S., Harrison, R. M., and Querol, X.: AIRUSE-LIFE+: a harmonized PM speciation and source apportionment in five southern European cities, *Atmos. Chem. Phys.*, 16, 3289–3309, <https://doi.org/10.5194/acp-16-3289-2016>, 2016.
- Belis, C. A., Pernigotti, D., Karagulian, F., Pirovano, G., Larsen, B. R., Gerboles, M., and Hopke, P. K.: A new methodology to assess the performance and uncertainty of source apportionment models in intercomparison exercises, *Atmos. Environ.*, 119, 35–44, <https://doi.org/10.1016/j.atmosenv.2015.08.002>, 2015.
- Bozzetti, C., El Haddad, I., Salameh, D., Daellenbach, K. R., Fermo, P., Gonzalez, R., Minguillón, M. C., Iinuma, Y., Poulain, L., Elser, M., Müller, E., Slowik, J. G., Jaffrezo, J.-L., Baltensperger, U., Marchand, N., and Prévôt, A. S. H.: Organic aerosol source apportionment by offline-AMS over a full year in Marseille, *Atmos. Chem. Phys.*, 17, 8247–8268, <https://doi.org/10.5194/acp-17-8247-2017>, 2017.
- Canonaco, F., Crippa, M., Slowik, J. G., Baltensperger, U., and Prévôt, A. S. H.: SoFi, an IGOR-based interface for the efficient use of the generalized multilinear engine (ME-2) for the source apportionment: ME-2 application to aerosol mass spectrometer data, *Atmos. Meas. Tech.*, 6, 3649–3661, <https://doi.org/10.5194/amt-6-3649-2013>, 2013.
- Canonaco, F., Slowik, J. G., Baltensperger, U., and Prévôt, A. S. H.: Seasonal differences in oxygenated organic aerosol composition: implications for emissions sources and factor analysis, *Atmos. Chem. Phys.*, 15, 6993–7002, <https://doi.org/10.5194/acp-15-6993-2015>, 2015.
- Canonaco, F., Tobler, A., Chen, G., Sosedova, Y., Slowik, J. G., Bozzetti, C., Daellenbach, K. R., El Haddad, I., Crippa, M., Huang, R.-J., Furger, M., Baltensperger, U., and Prévôt, A. S. H.: A new method for long-term source apportionment with time-dependent factor profiles and uncertainty assessment using SoFi Pro: application to 1 year of organic aerosol data, *Atmos. Meas. Tech.*, 14, 923–943, <https://doi.org/10.5194/amt-14-923-2021>, 2021.
- Chazeau, B., Temime-Roussel, B., Gille, G., Mesbah, B., D’Anna, B., Wortham, H., and Marchand, N.: Measurement report: Fourteen months of real-time characterisation of the submicron aerosol and its atmospheric dynamics at the Marseille–Longchamp supersite, *Atmos. Chem. Phys.*, 21, 7293–7319, <https://doi.org/10.5194/acp-21-7293-2021>, 2021.
- Chen, G., Sosedova, Y., Canonaco, F., Fröhlich, R., Tobler, A., Vlachou, A., Daellenbach, K. R., Bozzetti, C., Hueglin, C., Graf, P., Baltensperger, U., Slowik, J. G., El Haddad, I., and Prévôt, A. S. H.: Time-dependent source apportionment of submicron organic aerosol for a rural site in an alpine valley using a rolling positive matrix factorisation (PMF) window, *Atmos. Chem. Phys.*, 21, 15081–15101, <https://doi.org/10.5194/acp-21-15081-2021>, 2021.
- Chen, G., Canonaco, F., Tobler, A., Aas, W., Alastuey, A., Allan, J., Atabakhsh, S., Aurela, M., Baltensperger, U., Bougiatioti, A., De Brito, J. F., Ceburnis, D., Chazeau, B., Chebaicheb, H., Daellenbach, K. R., Ehn, M., El Haddad, I., Eleftheriadis, K., Favez, O., Flentje, H., Font, A., Fossom, K., Freney, E., Gini, M., Green, D. C., Heikkinen, L., Herrmann, H., Kalogridis, A.-C., Keernik, H., Lhotka, R., Lin, C., Lunder, C., Maasikmets, M., Manousakas, M. I., Marchand, N., Marin, C., Marmureanu, L., Mihalopoulos, N., Močnik, G., Nečeki, J., O’Dowd, C., Ovadnevaite, J., Peter, T., Petit, J.-E., Pikridas, M., Platt, S. M., Pokorná, P., Poulain, L., Priestman, M., Riffault, V., Rinaldi, M., Rózański, K., Schwarz, J., Sciare, J., Simon, L., Skiba, A., Slowik, J. G., Sosedova, Y., Stavroulas, I., Styszko, K., Teinmaa, E., Timonen, H., Tremper, A., Vasilescu, J., Via, M., Vodička, P., Wiedensohler, A., Zografou, O., Minguillón, M. C., and Prévôt, A. S. H.: European aerosol phenomenology – 8: Harmonised source apportionment of organic aerosol using 22 Year-long AC-MS/AMS datasets, *Environment International*, ISSN 0160-4120, 166, <https://doi.org/10.1016/j.envint.2022.107325>, 2022.
- Chen, J. and Hoek, G.: Long-term exposure to PM and all-cause and cause-specific mortality: A systematic review and meta-analysis, *Environ. Int.*, 143, 105974, <https://doi.org/10.1016/j.envint.2020.105974>, 2020.
- Crippa, M., DeCarlo, P. F., Slowik, J. G., Mohr, C., Heringa, M. F., Chirico, R., Poulain, L., Freutel, F., Sciare, J., Cozic, J., Di Marco, C. F., Elsasser, M., Nicolas, J. B., Marchand, N., Abidi, E., Wiedensohler, A., Drewnick, F., Schneider, J., Borrmann, S., Nemitz, E., Zimmermann, R., Jaffrezo, J.-L., Prévôt, A. S. H., and Baltensperger, U.: Wintertime aerosol chemical composition and source apportionment of the organic fraction in the metropolitan area of Paris, *Atmos. Chem. Phys.*, 13, 961–981, <https://doi.org/10.5194/acp-13-961-2013>, 2013.
- Crippa, M., Canonaco, F., Lanz, V. A., Äijälä, M., Allan, J. D., Carbone, S., Capes, G., Ceburnis, D., Dall’Osto, M., Day, D. A., DeCarlo, P. F., Ehn, M., Eriksson, A., Freney, E., Hildebrandt Ruiz, L., Hillamo, R., Jimenez, J. L., Junninen, H., Kiendler-Scharr, A., Kortelainen, A.-M., Kulmala, M., Laaksonen, A., Mensah, A. A., Mohr, C., Nemitz, E., O’Dowd, C., Ovadnevaite, J., Pandis, S. N., Petäjä, T., Poulain, L., Saarikoski, S., Sellegri, K., Swietlicki, E., Tiitta, P., Worsnop, D. R., Baltensperger, U., and Prévôt, A. S. H.: Organic aerosol components derived from 25 AMS data sets across Europe using a consistent ME-2 based source apportionment approach, *Atmos. Chem. Phys.*, 14, 6159–6176, <https://doi.org/10.5194/acp-14-6159-2014>, 2014.
- Daellenbach, K. R., Uzu, G., Jiang, J., Cassagnes, L. E., Leni, Z., Vlachou, A., Stefanelli, G., Canonaco, F., Weber, S., Segers, A., Kuenen, J. J. P., Schaap, M., Favez, O., Albinet, A., Aksoyoglu, S., Dommen, J., Baltensperger, U., Geiser, M., El Haddad, I., Jaffrezo, J. L., and Prévôt, A. S. H.: Sources of particulate-matter air pollution and its oxidative potential in Europe, *Nature*, 587, 414–419, <https://doi.org/10.1038/s41586-020-2902-8>, 2020.
- Efron, B.: Bootstrap Methods: Another Look at the Jackknife, *Ann. Stat.*, 7, 1–26, <https://doi.org/10.1214/aos/1176344552>, 1979.
- El Haddad, I., D’Anna, B., Temime-Roussel, B., Nicolas, M., Boreave, A., Favez, O., Voisin, D., Sciare, J., George, C., Jaffrezo, J.-L., Wortham, H., and Marchand, N.: Towards a better understanding of the origins, chemical composition and aging of oxygenated organic aerosols: case study of a Mediterranean industrialized environment, Marseille, *Atmos. Chem. Phys.*, 13, 7875–7894, <https://doi.org/10.5194/acp-13-7875-2013>, 2013.
- Forello, A. C., Bernardoni, V., Calzolari, G., Lucarelli, F., Massabò, D., Nava, S., Pileci, R. E., Prati, P., Valentini, S., Valli, G., and Vecchi, R.: Exploiting multi-wavelength aerosol absorption coef-



- ficients in a multi-time resolution source apportionment study to retrieve source-dependent absorption parameters, *Atmos. Chem. Phys.*, 19, 11235–11252, <https://doi.org/10.5194/acp-19-11235-2019>, 2019.
- Fröhlich, R., Cubison, M. J., Slowik, J. G., Bukowiecki, N., Prévôt, A. S. H., Baltensperger, U., Schneider, J., Kimmel, J. R., Gonin, M., Rohner, U., Worsnop, D. R., and Jayne, J. T.: The ToF-ACSM: a portable aerosol chemical speciation monitor with TOFMS detection, *Atmos. Meas. Tech.*, 6, 3225–3241, <https://doi.org/10.5194/amt-6-3225-2013>, 2013.
- Heikkinen, L., Äijälä, M., Daellenbach, K. R., Chen, G., Garmash, O., Aliaga, D., Graeffe, F., Rätty, M., Luoma, K., Aalto, P., Kulmala, M., Petäjä, T., Worsnop, D., and Ehn, M.: Eight years of sub-micrometre organic aerosol composition data from the boreal forest characterized using a machine-learning approach, *Atmos. Chem. Phys.*, 21, 10081–10109, <https://doi.org/10.5194/acp-21-10081-2021>, 2021.
- IPCC: Climate Change 2021: The Physical Science Basis. Contribution of Working Group I to the Sixth Assessment Report of the Intergovernmental Panel on Climate Change, edited by: Masson-Delmotte, V., Zhai, P., Pirani, A., Connors, S. L., Péan, C., Berger, S., Caud, N., and Chen, Y., Cambridge Univ. Press, 3949, [https://www.ipcc.ch/report/ar6/wg1/downloads/report/IPCC\\_AR6\\_WGI\\_Full\\_Report.pdf](https://www.ipcc.ch/report/ar6/wg1/downloads/report/IPCC_AR6_WGI_Full_Report.pdf) (last access: September 2022), 2021 (in press).
- Jiang, J., Aksoyoglu, S., El-Haddad, I., Ciarelli, G., Denier van der Gon, H. A. C., Canonaco, F., Gilardoni, S., Paglione, M., Minguillón, M. C., Favez, O., Zhang, Y., Marchand, N., Hao, L., Virtanen, A., Florou, K., O'Dowd, C., Ovadnevaite, J., Baltensperger, U., and Prévôt, A. S. H.: Sources of organic aerosols in Europe: a modeling study using CAMx with modified volatility basis set scheme, *Atmos. Chem. Phys.*, 19, 15247–15270, <https://doi.org/10.5194/acp-19-15247-2019>, 2019.
- Jimenez, J. L., Canagaratna, M. R., Donahue, N. M., Prevot, A. S. H., Zhang, Q., Kroll, J. H., DeCarlo, P. F., Allan, J. D., Coe, H., Ng, N. L., Aiken, A. C., Docherty, K. S., Ulbrich, I. M., Grieshop, A. P., Robinson, A. L., Duplissy, J., Smith, J. D., Wilson, K. R., Lanz, V. A., Hueglin, C., Sun, Y. L., Tian, J., Laaksonen, A., Raatikainen, T., Rautiainen, J., Vaattovaara, P., Ehn, M., Kulmala, M., Tomlinson, J. M., Collins, D. R., Cubison, M. J., Dunlea, E. J., Huffman, J. A., Onasch, T. B., Alfarra, M. R., Williams, P. I., Bower, K., Kondo, Y., Schneider, J., Drewnick, F., Borrmann, S., Weimer, S., Demerjian, K., Salcedo, D., Cottrell, L., Griffin, R., Takami, A., Miyoshi, T., Hatakeyama, S., Shimojo, A., Sun, J. Y., Zhang, Y. M., Dzepina, K., Kimmel, J. R., Sueper, D., Jayne, J. T., Herndon, S. C., Trimborn, A. M., Williams, L. R., Wood, E. C., Middlebrook, A. M., Kolb, C. E., Baltensperger, U., and Worsnop, D. R.: Evolution of organic aerosols in the atmosphere, *Science*, 80, 1525–1529, <https://doi.org/10.1126/science.1180353>, 2009.
- Ng, N. L., Herndon, S. C., Trimborn, A., Canagaratna, M. R., Croteau, P. L., Onasch, T. B., Sueper, D., Worsnop, D. R., Zhang, Q., Sun, Y. L., and Jayne, J. T.: An Aerosol Chemical Speciation Monitor (ACSM) for routine monitoring of the composition and mass concentrations of ambient aerosol, *Aerosol Sci. Technol.*, 45, 770–784, <https://doi.org/10.1080/02786826.2011.560211>, 2011a.
- Ng, N. L., Canagaratna, M. R., Jimenez, J. L., Chhabra, P. S., Seinfeld, J. H., and Worsnop, D. R.: Changes in organic aerosol composition with aging inferred from aerosol mass spectra, *Atmos. Chem. Phys.*, 11, 6465–6474, <https://doi.org/10.5194/acp-11-6465-2011>, 2011b.
- Ogulei, D., Hopke, P. K., Zhou, L., Paatero, P., Park, S. S., and Ondov, J. M.: Receptor modeling for multiple time resolved species: The Baltimore supersite, *Atmos. Environ.*, 39, 3751–3762, <https://doi.org/10.1016/j.atmosenv.2005.03.012>, 2005.
- Paatero, P.: The Multilinear Engine – A Table-Driven, Least Squares Program for Solving Multilinear Problems, Including the n-Way Parallel Factor Analysis Model, *J. Comput. Graph. Stat.*, 8, 854–888, <https://doi.org/10.1080/10618600.1999.10474853>, 1999.
- Paatero, P. and Hopke, P. K.: Discarding or downweighting high-noise variables in factor analytic models, *Anal. Chim. Acta*, 490, 277–289, [https://doi.org/10.1016/S0003-2670\(02\)01643-4](https://doi.org/10.1016/S0003-2670(02)01643-4), 2003.
- Paatero, P. and Tapper, U.: Positive matrix factorization: A non-negative factor model with optimal utilization of error estimates of data values, *Environmetrics*, 5, 111–126, <https://doi.org/10.1002/env.3170050203>, 1994.
- Parworth, C., Fast, J., Mei, F., Shippert, T., Sivaraman, C., Tilp, A., Watson, T., and Zhang, Q.: Long-term measurements of submicrometer aerosol chemistry at the Southern Great Plains (SGP) using an Aerosol Chemical Speciation Monitor (ACSM), *Atmos. Environ.*, 106, 43–55, <https://doi.org/10.1016/j.atmosenv.2015.01.060>, 2015.
- Rai, P., Furger, M., El Haddad, I., Kumar, V., Wang, L., Singh, A., Dixit, K., Bhattu, D., Petit, J. E., Ganguly, D., Rastogi, N., Baltensperger, U., Tripathi, S. N., Slowik, J. G., and Prévôt, A. S. H.: Real-time measurement and source apportionment of elements in Delhi's atmosphere, *Sci. Total Environ.*, 742, 140332, <https://doi.org/10.1016/j.scitotenv.2020.140332>, 2020.
- Rodríguez, S. and Cuevas, E.: The contributions of “minimum primary emissions” and “new particle formation enhancements” to the particle number concentration in urban air, *J. Aerosol Sci.*, 38, 1207–1219, <https://doi.org/10.1016/j.jaerosci.2007.09.001>, 2007.
- Rutherford, J. W., Larson, T. V., Gould, T., Seto, E., Novosselov, I. V., and Posner, J. D.: Source apportionment of environmental combustion sources using excitation emission matrix fluorescence spectroscopy and machine learning, *Atmos. Environ.*, 259, 118501, <https://doi.org/10.1016/j.atmosenv.2021.118501>, 2021.
- Shih, C.-H., Chen, J.-K., Kuo, L.-W., Cho, K.-H., Hsiao, T.-C., Lin, Z.-W., Lin, Y.-S., Kang, J.-H., Lo, Y.-C., Chuang, K.-J., Cheng, T.-J., and Chuang, H.-C.: Chronic pulmonary exposure to traffic-related fine particulate matter causes brain impairment in adult rats, *Part. Fibre Toxicol.*, 15, 1–17, <https://doi.org/10.1186/s12989-018-0281-1>, 2018.
- Sun, Y., Xu, W., Zhang, Q., Jiang, Q., Canonaco, F., Prévôt, A. S. H., Fu, P., Li, J., Jayne, J., Worsnop, D. R., and Wang, Z.: Source apportionment of organic aerosol from 2-year highly time-resolved measurements by an aerosol chemical speciation monitor in Beijing, China, *Atmos. Chem. Phys.*, 18, 8469–8489, <https://doi.org/10.5194/acp-18-8469-2018>, 2018.
- Textor, C., Schulz, M., Guibert, S., Kinne, S., Balkanski, Y., Bauer, S., Bernsten, T., Berglen, T., Boucher, O., Chin, M., Dentener, F., Diehl, T., Easter, R., Feichter, H., Fillmore, D., Ghan, S., Ginoux, P., Gong, S., Grini, A., Hendricks, J., Horowitz, L., Huang, P., Isaksen, I., Iversen, I., Kloster, S., Koch, D., Kirkevåg, A., Krist-

- jansson, J. E., Krol, M., Lauer, A., Lamarque, J. F., Liu, X., Montanaro, V., Myhre, G., Penner, J., Pitari, G., Reddy, S., Seland, Ø., Stier, P., Takemura, T., and Tie, X.: Analysis and quantification of the diversities of aerosol life cycles within AeroCom, *Atmos. Chem. Phys.*, 6, 1777–1813, <https://doi.org/10.5194/acp-6-1777-2006>, 2006.
- Tobler, A. K., Canonaco, F., Skiba, A., Styszko, K., Nęcki, J., Slowik, J. G., and Baltensperger, U.: Characterization and source apportionment of PM 1 organic aerosol in Krakow, Poland, (April), 8299, 2021.
- Ulbrich, I. M., Canagaratna, M. R., Zhang, Q., Worsnop, D. R., and Jimenez, J. L.: Interpretation of organic components from Positive Matrix Factorization of aerosol mass spectrometric data, *Atmos. Chem. Phys.*, 9, 2891–2918, <https://doi.org/10.5194/acp-9-2891-2009>, 2009.
- Via, M.: Rolling vs. Seasonal comparison, Mendeley Data [data set], V1, <https://doi.org/10.17632/dsfty2rn7y.1>, 2022.
- Via, M.: “Rolling vs. Seasonal comparison”, Mendeley Data [data set], V2, <https://doi.org/10.17632/dsfty2rn7y.2>, 2022a.
- Via, M.: “Rolling vs. Seasonal PMF coding”, Mendeley Data [code], v1 <https://doi.org/10.17632/nd79y8mpg3.1>, 2022b.
- Yang, M., Chu, C., Bloom, M. S., Li, S., Chen, G., Heinrich, J., Markevych, I., Knibbs, L. D., Bowatte, G., Dharmage, S. C., Komppula, M., Leskinen, A., Hirvonen, M. R., Roponen, M., Jalava, P., Wang, S. Q., Lin, S., Zeng, X. W., Hu, L. W., Liu, K. K., Yang, B. Y., Chen, W., Guo, Y., and Dong, G. H.: Is smaller worse? New insights about associations of PM1 and respiratory health in children and adolescents, *Environ. Int.*, 120, 516–524, <https://doi.org/10.1016/j.envint.2018.08.027>, 2018.
- Yin, P., Guo, J., Wang, L., Fan, W., Lu, F., Guo, M., Moreno, S. B. R., Wang, Y., Wang, H., Zhou, M., and Dong, Z.: Higher Risk of Cardiovascular Disease Associated with Smaller Size-Fractionated Particulate Matter, *Environ. Sci. Technol. Lett.*, 7, 95–101, <https://doi.org/10.1021/acs.estlett.9b00735>, 2020.
- Yuan, B., Shao, M., De Gouw, J., Parrish, D. D., Lu, S., Wang, M., Zeng, L., Zhang, Q., Song, Y., Zhang, J., and Hu, M.: Volatile organic compounds (VOCs) in urban air: How chemistry affects the interpretation of positive matrix factorization (PMF) analysis, *J. Geophys. Res.-Atmos.*, 117, 1–17, <https://doi.org/10.1029/2012JD018236>, 2012.
- Zhang, Y., Favez, O., Petit, J.-E., Canonaco, F., Truong, F., Bonnaire, N., Crenn, V., Amodeo, T., Prévôt, A. S. H., Sciare, J., Gros, V., and Albinet, A.: Six-year source apportionment of submicron organic aerosols from near-continuous highly time-resolved measurements at SIRTa (Paris area, France), *Atmos. Chem. Phys.*, 19, 14755–14776, <https://doi.org/10.5194/acp-19-14755-2019>, 2019.