

Figure 1

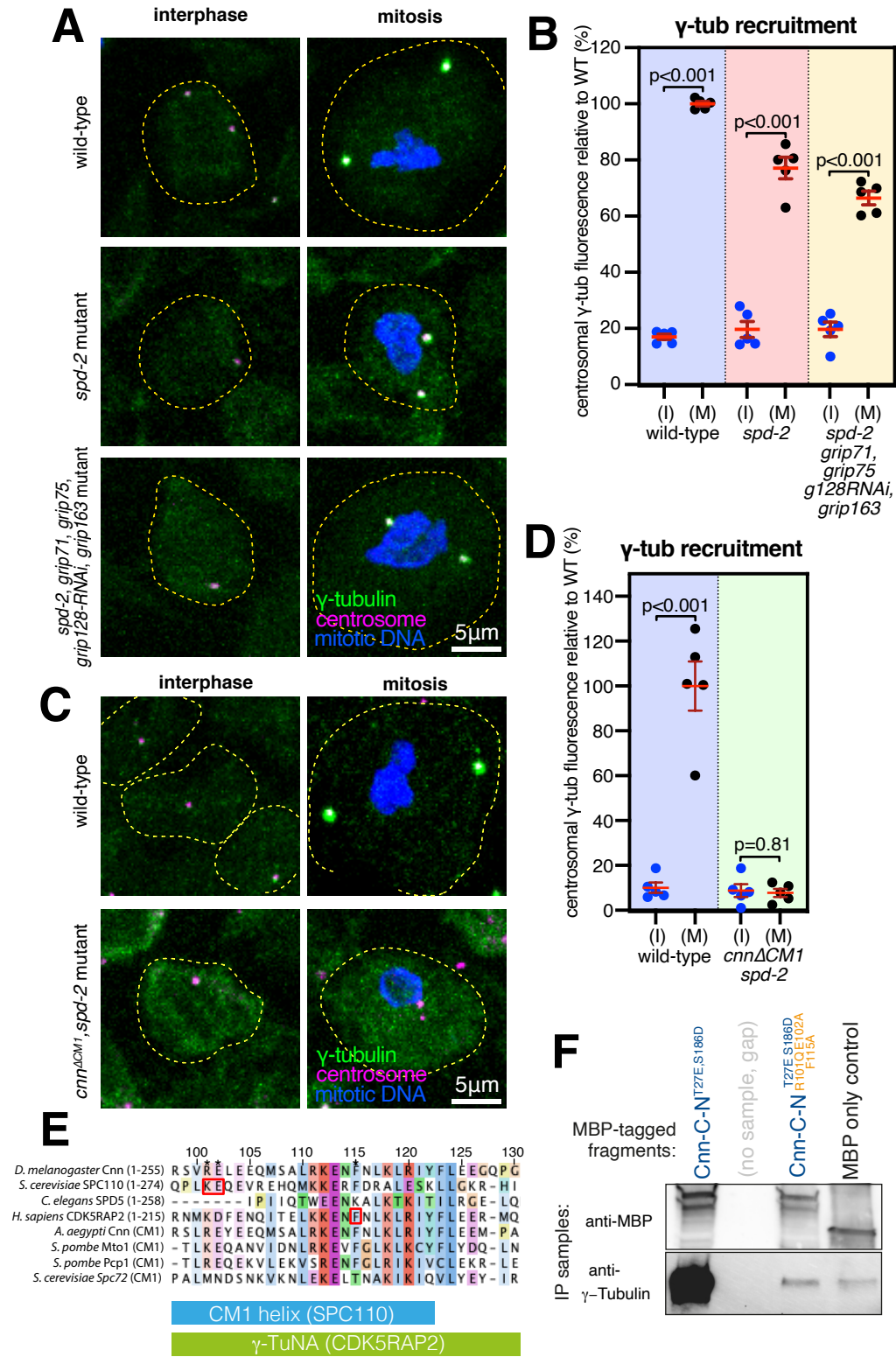
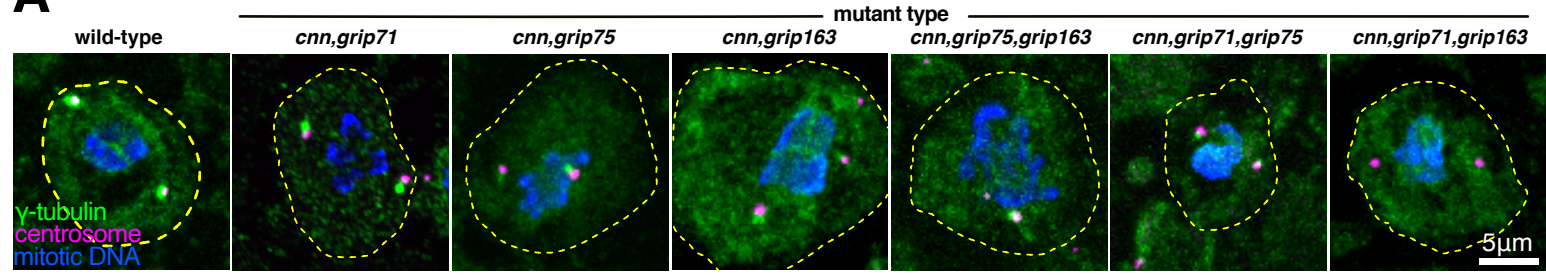
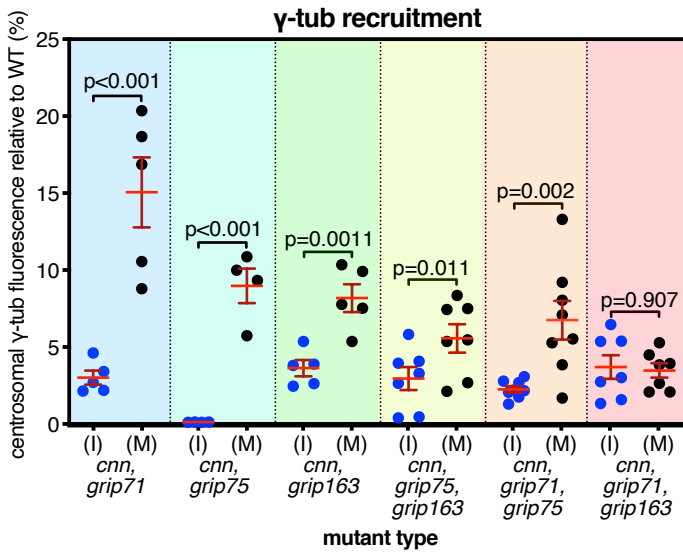


Figure 2

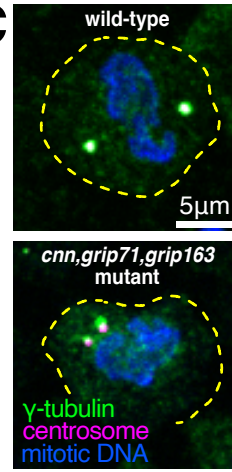
A



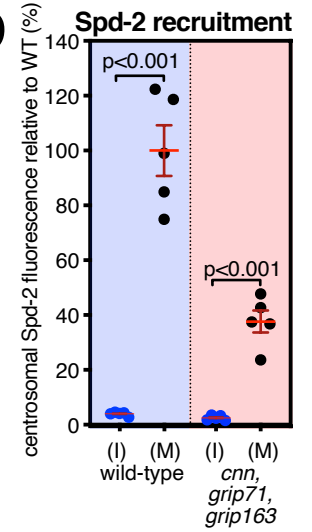
B



C



D



E

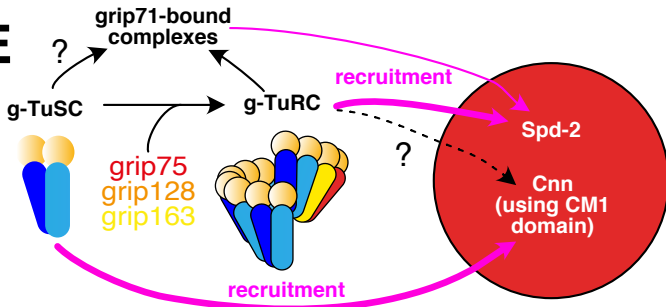


Figure 3

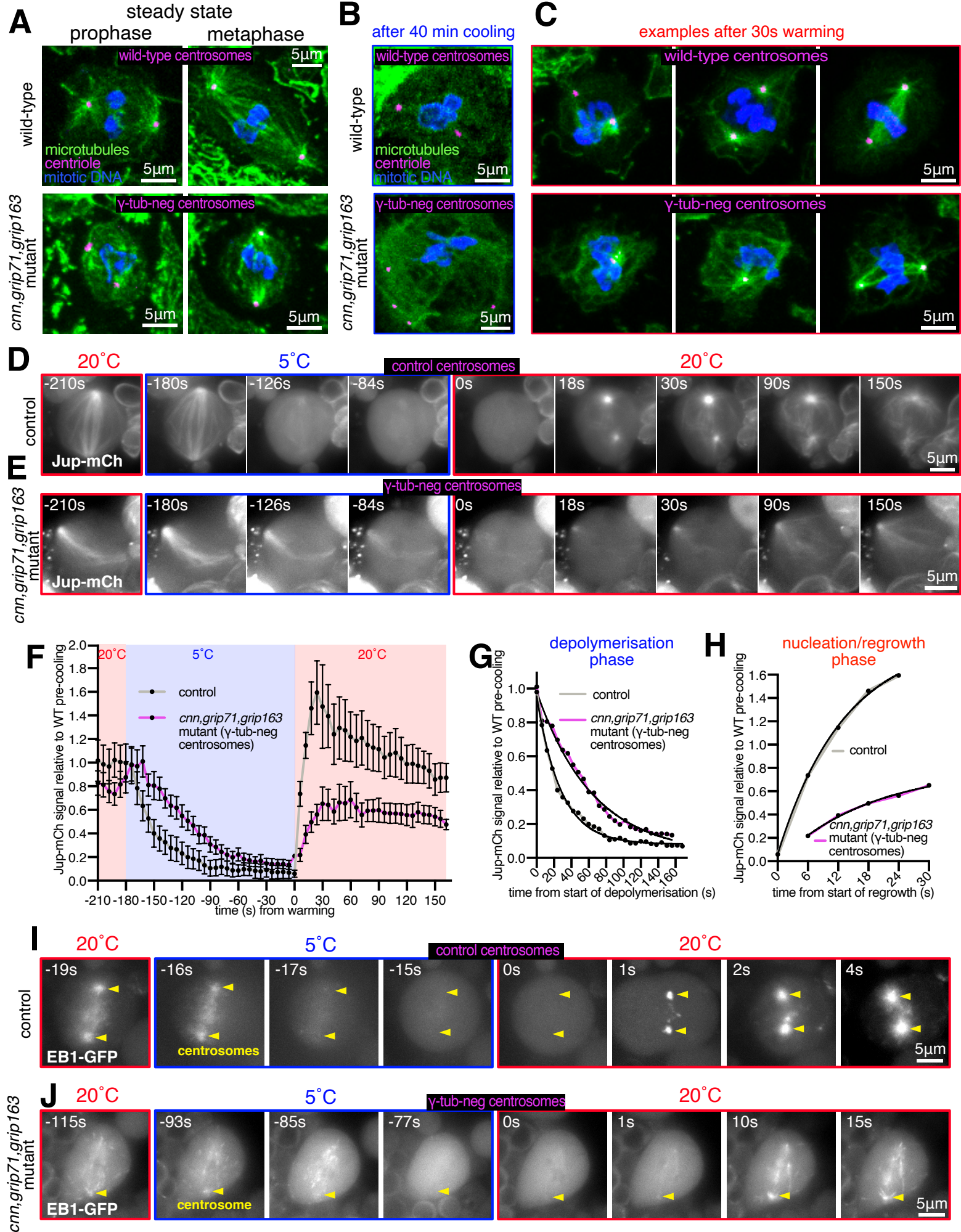


Figure 4

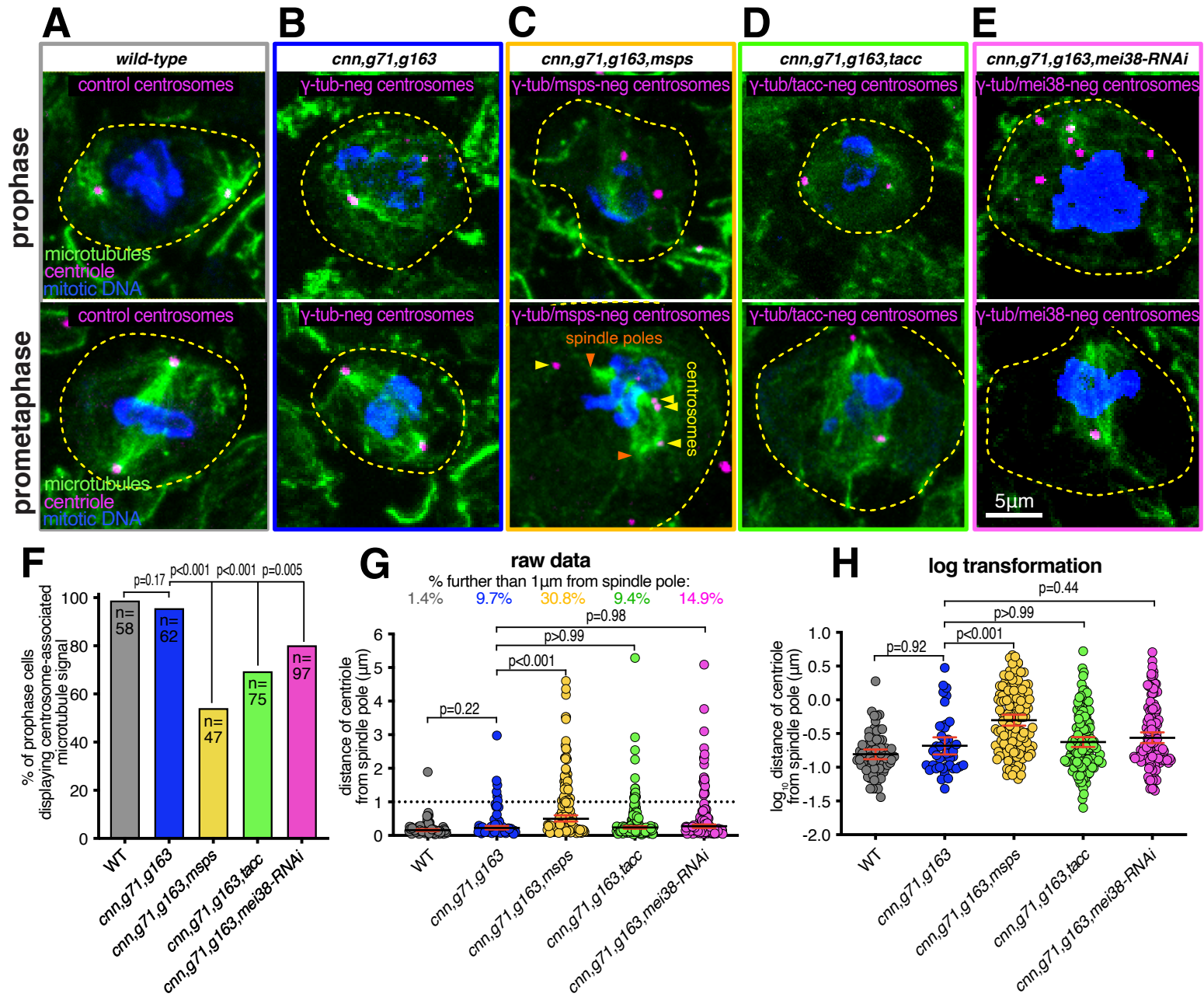
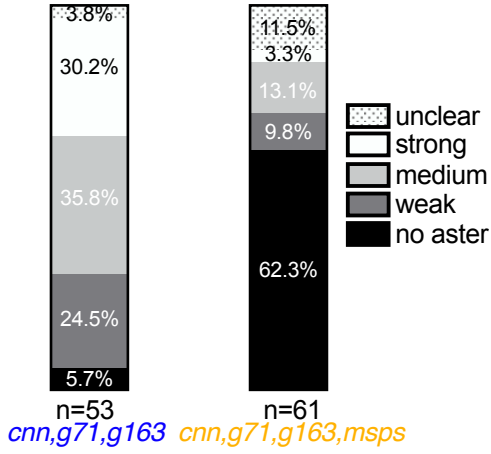
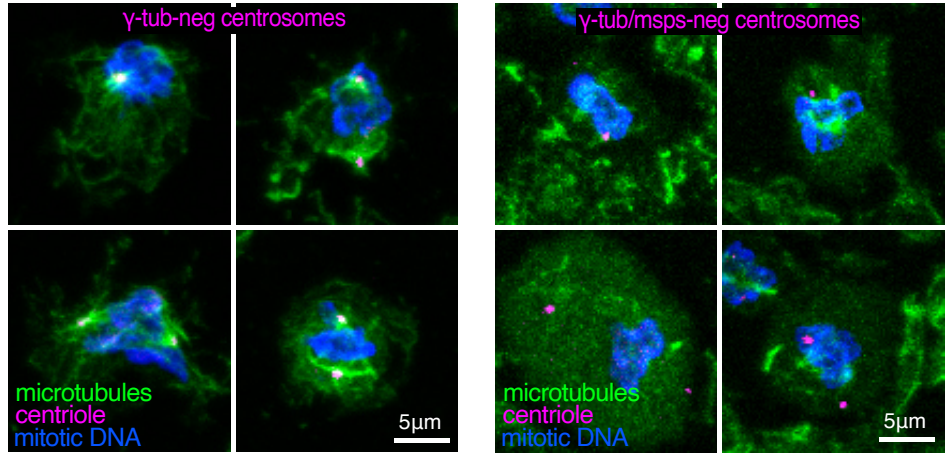


Figure 5

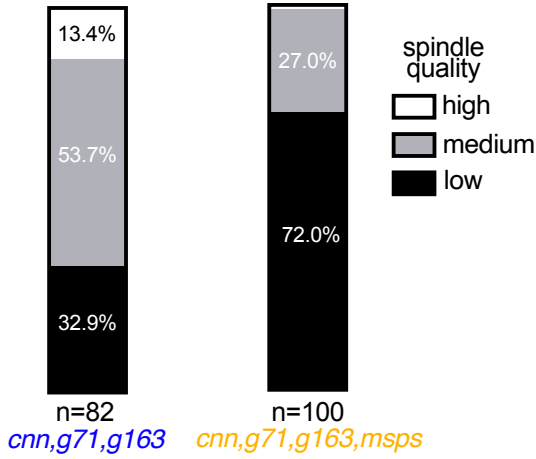
A centrosome aster analysis in cells yet to form spindle, 30s post warming



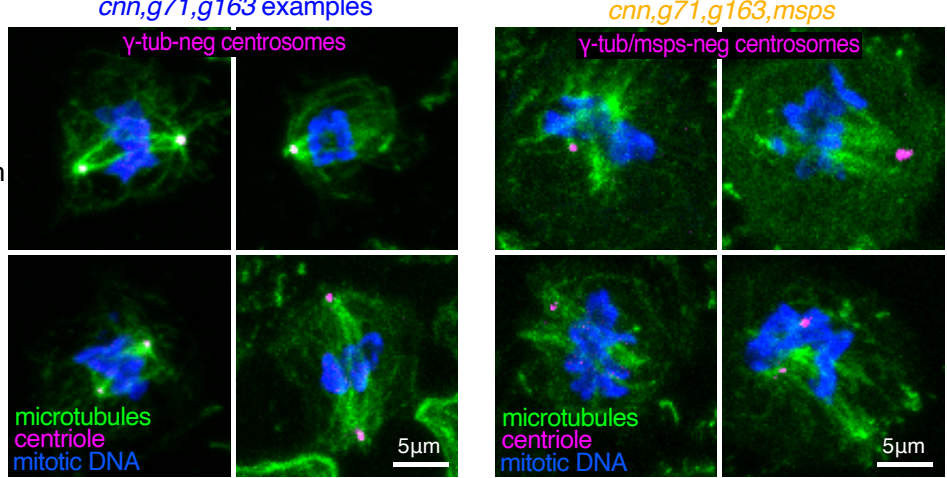
B cells yet to form spindle (30s post warming)



C spindle quality analysis in cells that had formed spindle and that contained centrosomes, 30s post warming



D cells that had formed spindle and that contained centrosomes (30s post warming)



E spindle quality analysis in cells that had formed spindle and that lacked centrosomes, 30s post warming)

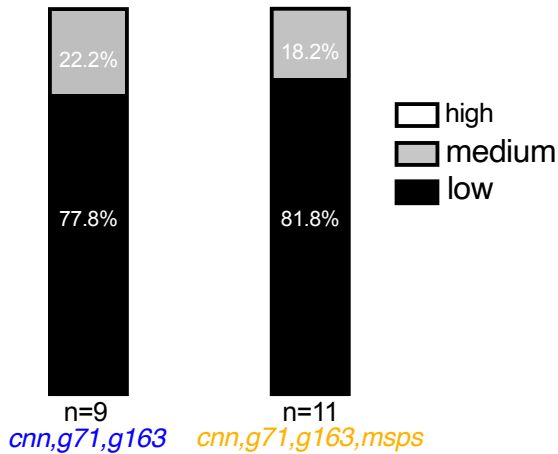


Figure S1

wild-type cells
40 minutes post cooling
(MTs depolymerised)

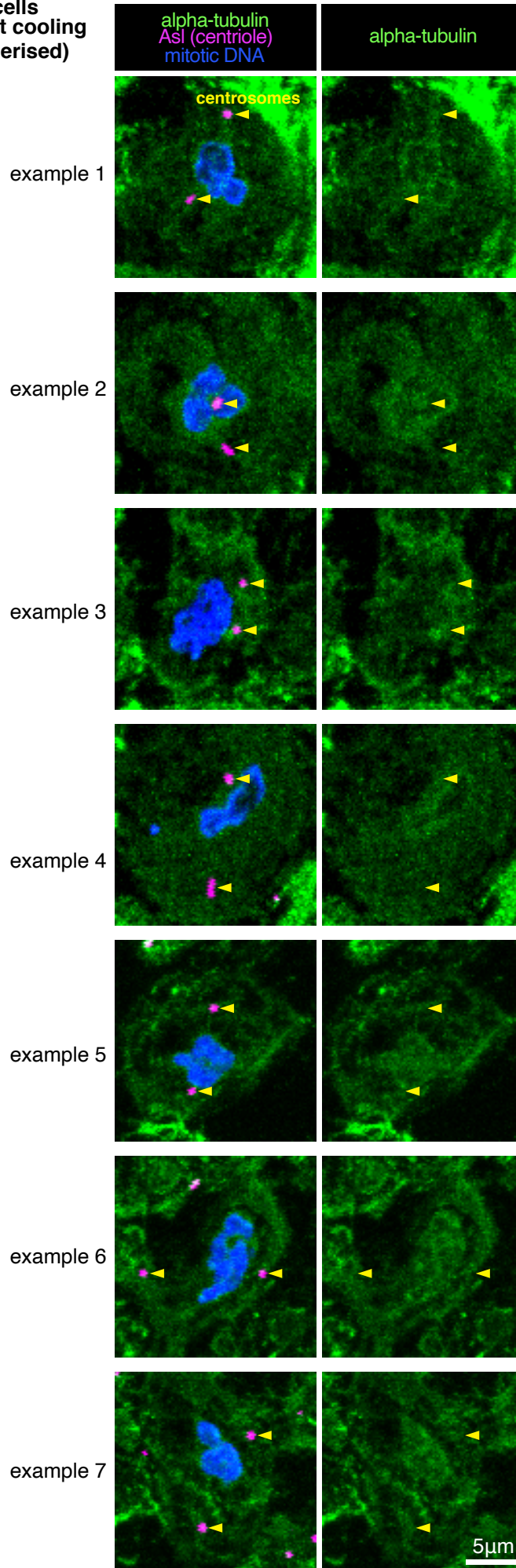


Figure S2

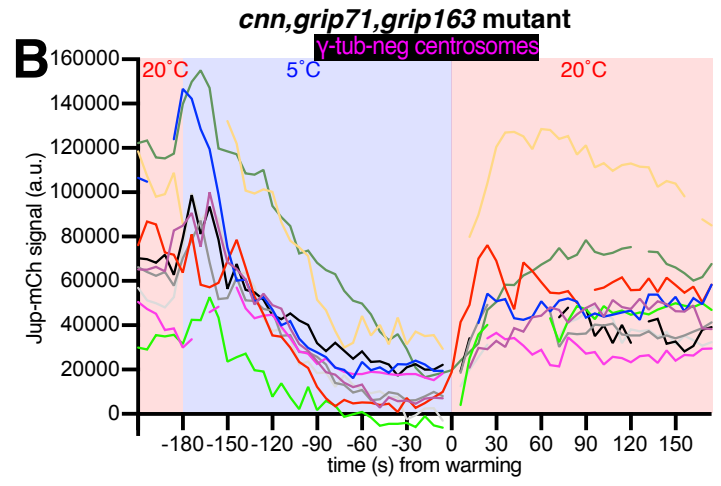
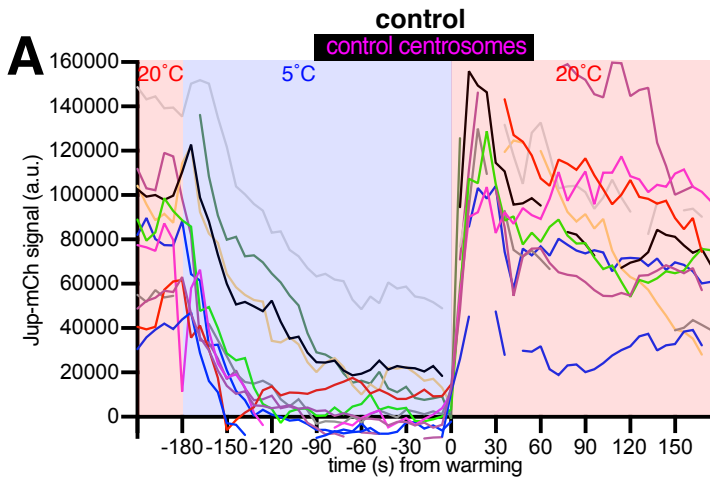


Figure S3

cell phenotype, 30s post warming

