



**HAL**  
open science

## Novel Chronic Anaplasmosis in Splenectomized Patient, Amazon Rainforest

Olivier Duron, Rachid Koual, Lise Musset, Marie Buysse, Yann Lambert,  
Benoît Jaulhac, Denis Blanchet, Kinan Drak Alsibai, Yassamine Lazrek, Loïc  
Epelboin, et al.

► **To cite this version:**

Olivier Duron, Rachid Koual, Lise Musset, Marie Buysse, Yann Lambert, et al.. Novel Chronic Anaplasmosis in Splenectomized Patient, Amazon Rainforest. *Emerging Infectious Diseases*, 2022, 28 (8), pp.1673-1676. 10.3201/eid2808.212425 . hal-03796260v2

**HAL Id: hal-03796260**

**<https://hal.science/hal-03796260v2>**

Submitted on 12 Oct 2022

**HAL** is a multi-disciplinary open access archive for the deposit and dissemination of scientific research documents, whether they are published or not. The documents may come from teaching and research institutions in France or abroad, or from public or private research centers.

L'archive ouverte pluridisciplinaire **HAL**, est destinée au dépôt et à la diffusion de documents scientifiques de niveau recherche, publiés ou non, émanant des établissements d'enseignement et de recherche français ou étrangers, des laboratoires publics ou privés.



Distributed under a Creative Commons Attribution 4.0 International License

# Novel Chronic Anaplasmosis in Splenectomized Patient, Amazon Rainforest

Olivier Duron, Rachid Koual, Lise Musset, Marie Buisse, Yann Lambert, Benoît Jaulhac, Denis Blanchet, Kinan Drak Alsibai, Yassamine Lazrek, Loïc Epelboin, Pierre Deshuillers, Céline Michaud, Maylis Douine

We report a case of unusual human anaplasmosis in the Amazon rainforest of French Guiana. Molecular typing demonstrated that the pathogen is a novel *Anaplasma* species, distinct to all known species, and more genetically related to recently described *Anaplasma* spp. causing infections in rainforest wild fauna of Brazil.

Anaplasmoses are emerging tickborne zoonoses caused by intracellular bacteria of the *Anaplasma* genus. In total, 8 *Anaplasma* species and several candidate species have been described, including at least 5 species infecting humans (1,2). Of particular concern, the agent of human granulocytic anaplasmosis, *A. phagocytophilum*, has a specific tropism to polymorphonuclear neutrophils (1,3). Another species, provisionally named *A. capra*, recently described from asymptomatic goats, is now recognized as an agent of human intraerythrocytic anaplasmosis in China (4). The 3 other species detected in humans are major veterinary agents sporadically identified in few patients worldwide: *A. ovis* and *A. bovis* in erythrocytes and *A. platys* in platelets (1,5). Human anaplasmosis are consistently associated with persons who live in rural areas in habitats favorable to ticks or who work closely with domestic animals (1,6). However, recent surveys

report the presence of novel *Anaplasma* species of undetermined zoonotic potential in wild fauna (1,2).

## The Study

We assessed the presence of *Anaplasma* in blood samples of clandestine gold miners working in the Amazon rainforest of French Guiana. This 83,000 km<sup>2</sup> territory, located between Suriname and Brazil, is one of the regions of highest biodiversity in the world, with >280 species of wild mammals (7). The human population of French Guiana (≈284,000 inhabitants) is concentrated principally in a handful of towns spread along the coastline and the 2 main rivers (8). The interior is largely uninhabited and covered by dense rainforest, where illegal gold mining camps are located (9,10).

We examined 363 archived DNA extracts obtained from human blood samples. We primarily collected these samples in 2019 as part of Malakit, a malaria survey in remote mining camps in French Guiana (11). To characterize the whole bacterial diversity, we typed DNA blood samples by using a high-throughput bacterial 16S rDNA (*rrs*) sequencing approach (bacterial barcoding) (12). Bacteria were characterized as operational taxonomic units (OTUs) and amplicon sequence variants (ASVs) and taxonomically assigned by using the Silva database (<https://www.arb-silva.de>).

Examination of OTUs and ASVs revealed the presence of *Anaplasma* sequences in 1 DNA sample. No OTU or ASV assigned to the *Anaplasma* genus or to the Anaplasmataceae family was detected in the 362 other samples. We further conducted 2 independent *Anaplasma*-specific PCRs targeting a region of the 16S rDNA gene (544 bp) and the 23S–5S (ITS2) intergenic region (423 bp) using techniques described by Calchi et al. (13) and obtained amplicons of correct sizes for the positive sample. The Sanger sequencing of amplicons obtained with each pair of primers

Author affiliations: Centre National de la Recherche Scientifique, Montpellier, France (O. Duron, R. Koual); MIVEGEC, Montpellier (O. Duron, R. Koual, M. Buisse); Institut Pasteur de la Guyane, Cayenne, French Guiana (L. Musset, Y. Lazrek); University of Montpellier, Montpellier (M. Buisse); Centre Hospitalier Andree Rosemon, Cayenne (Y. Lambert, L. Epelboin, M. Douine); University of Strasbourg, ITI InnoVec, and Hôpitaux Universitaires de Strasbourg, Strasbourg, France (B. Jaulhac); Centre Hospitalier de Cayenne, Cayenne (D. Blanchet, K. Drak Alsibai, L. Epelboin, C. Michaud); Ecole Nationale Vétérinaire d'Alfort, Maisons-Alfort, France (P. Deshuillers)

DOI: <https://doi.org/10.3201/eid2808.212425>

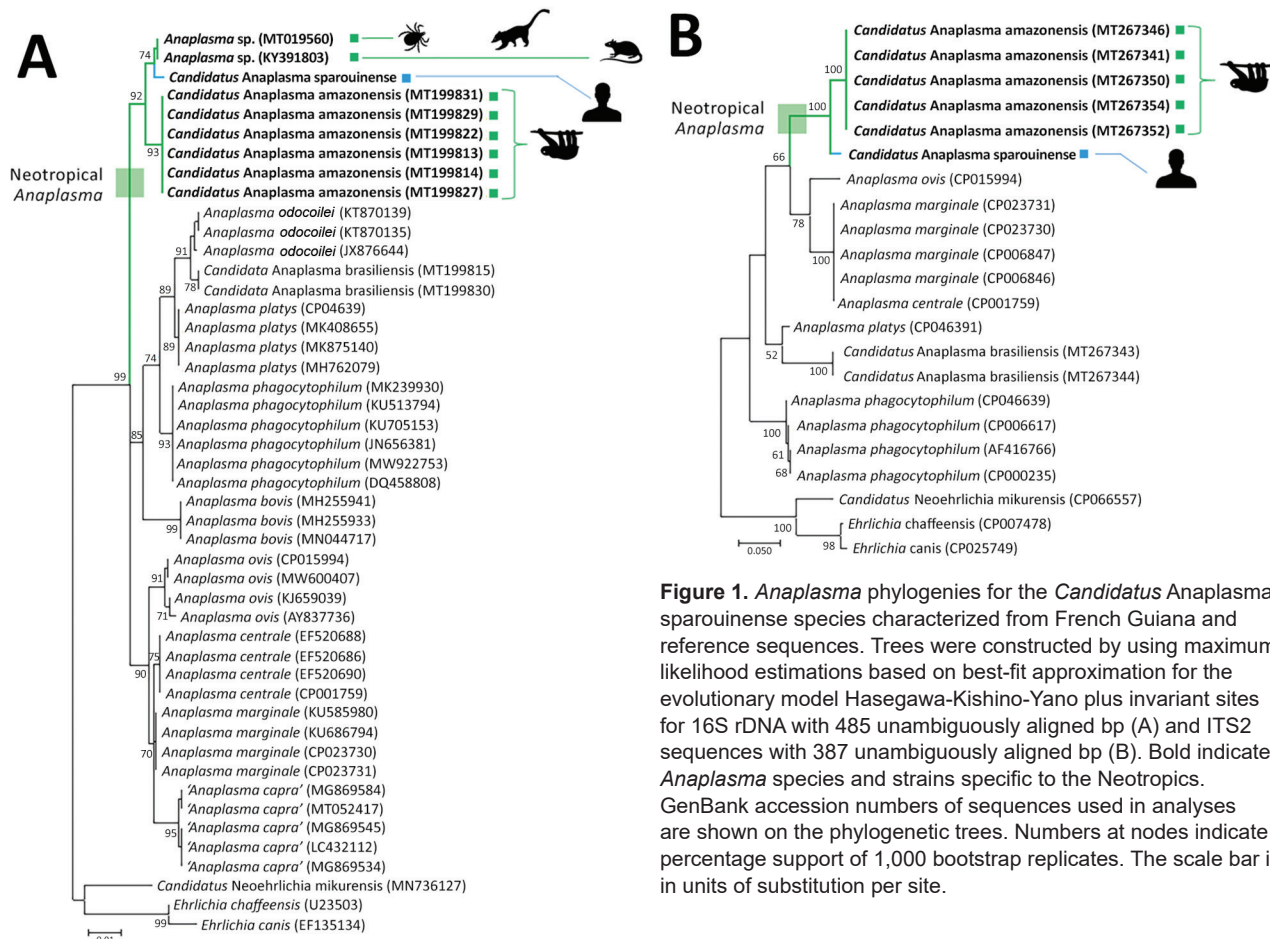
confirmed the presence of *Anaplasma*. These sequences have been deposited to GenBank (accession nos. ON513878, ON521229).

We used BLAST (<http://www.ncbi.nlm.nih.gov/blast/Blast.cgi>) to compare the 16S rDNA and ITS2 nt sequences with *Anaplasma* sequences available in GenBank. None of the nucleotide sequences observed in this study are 100% identical to known *Anaplasma* sequences. The 16S rRNA sequence showed highest identities with *Anaplasma* found in wild fauna of Brazil, including an *Anaplasma* sp. detected in *Amblyomma coelebs* ticks collected on South American coatis, *Nasua nasua* (99.8%; GenBank accession no. MT019560); another *Anaplasma* sp. of black rats, *Rattus rattus* (99.8%; GenBank accession no. KY391803); and *Candidatus Anaplasma amazonensis* (13) of brown-throated sloths (*Bradypus variegatus*) and two-toed sloths (*Choloepus didactylus*) (99.1%; GenBank accession no. MT199827). All other *Anaplasma* species showed identities <99%. The ITS2 sequences showed highest nucleotide identity with *Candidatus A. amazonensis* of sloths (96.8%; GenBank accession no. MT267354) and lower identities with other *Anaplasma* species or

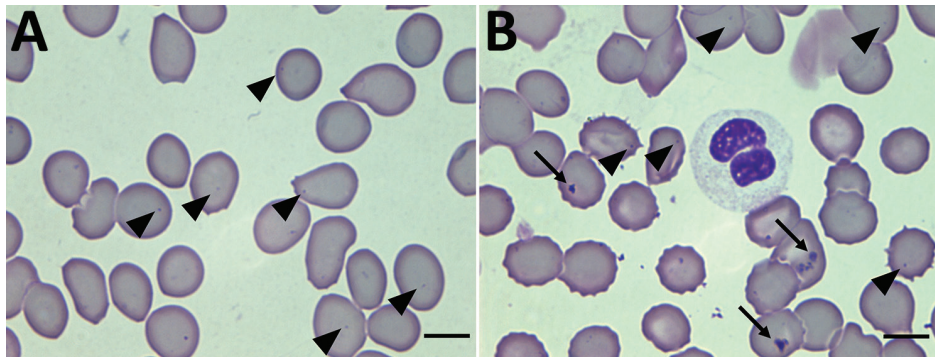
strains (<92%). On account of these distinct genetic traits, we propose the designation *Candidatus Anaplasma sparouinense* for this novel bacterium. The specific name refers to the Sparouine River, where the infected patient lived.

We conducted phylogenetic analyses on the basis of these 16S rDNA and ITS2 nucleotide sequences by using the maximum-likelihood method. We obtained trees of similar topologies with a robust clustering of *Candidatus A. sparouinense* with some *Anaplasma* associated with Brazilian wild fauna: *Candidatus A. sparouinense* is phylogenetically related to *Anaplasma* sp. infections detected in ticks of coatis, black rats, and, to a lesser extent, to *Candidatus A. amazonensis* of sloths (Figure 1). Altogether, they delineate a clade of neotropical *Anaplasma* divergent to all other *Anaplasma* species (Figure 1).

The DNA sample positive for *Candidatus A. sparouinense* was from a 58-year-old man who had a history of posttraumatic splenectomy and malaria attacks caused by *Plasmodium vivax*. This patient originated from Maranhão, Brazil, but had been working exclusively in the rainforest of French Guiana for the



**Figure 1.** *Anaplasma* phylogenies for the *Candidatus Anaplasma sparouinense* species characterized from French Guiana and reference sequences. Trees were constructed by using maximum-likelihood estimations based on best-fit approximation for the evolutionary model Hasegawa-Kishino-Yano plus invariant sites for 16S rDNA with 485 unambiguously aligned bp (A) and ITS2 sequences with 387 unambiguously aligned bp (B). Bold indicates *Anaplasma* species and strains specific to the Neotropics. GenBank accession numbers of sequences used in analyses are shown on the phylogenetic trees. Numbers at nodes indicate percentage support of 1,000 bootstrap replicates. The scale bar is in units of substitution per site.



**Figure 2.** Thin films of a blood sample collected in October 2019 from a patient in French Guiana. Inclusions of *Candidatus Anaplasma sparouinense* are located at the periphery of the red blood cells as small round dots of 0.3–0.4  $\mu\text{m}$  (arrowheads). Other red blood cells contain Howell-Jolly bodies of various shapes and sizes  $>1 \mu\text{m}$  (arrows). Some Howell-Jolly bodies are found in the background of the smears. Wright-Giemsa stain; original magnification  $\times 100$ .

past 3 years. The Sparouine anaplasmosis was retrospectively diagnosed in September 2021 on the basis of PCR survey of previous blood samples (October 2019 and May 2021) and blood smears (October 2019).

We primarily detected the presence of *Candidatus A. sparouinense* in a blood sample collected in October 2019. At that time, the patient was asymptomatic, including no fever and blood pressure at reference levels; tests were negative for agents of diseases usually tested for in French Guiana (serologic assays for yellow fever, Q fever, hepatitis B and C, HIV, and syphilis and molecular tests for malaria and leptospirosis). He displayed anemia, a hemoglobin level of 10.5 g/dL. The reexamination of Giemsa-stained thin blood film taken for malaria diagnosis at that time revealed the presence of intraerythrocytic bodies, which could be *Candidatus A. sparouinense*. No infection was detected in granulocytes and platelets, but around one third of erythrocytes harbored 1 or 2 small, round, dark purple inclusions located at their periphery, which could be *Anaplasma* (Figure 2). We also detected the presence of Howell-Jolly bodies in erythrocytes (Figure 2, panel B), which could be a consequence of splenectomy.

Eighteen months later (May 2021), the patient was admitted to the Cayenne Hospital Center with fever, myalgia, headache, epistaxis, and severe anemia (hemoglobin 6.6g/dL). A broad microbiologic investigation ruled out COVID-19, dengue, chikungunya virus, Zika virus, influenza, malaria, HIV, hepatitis B and C, and leptospirosis. The only positive test was a subnormal level of *Coxiella burnetii* IgM and IgG (phase II IgG 64, IgM 96; phase I negative), which led to the introduction of antibiotic treatment (doxycycline 100 mg 2 $\times$ /d for 21 d and ceftriaxone 1 g/d for 5 d). The anemia was considered autoimmune hemolytic because of a positive Coombs test and was thus treated with prednisolone with decreasing doses from 60 mg/day to 10 mg/day for 3 months. The patient recovered within 3 weeks; symptoms resolved, and his hemoglobin level improved to 9.4 g/dL at discharge. Our

a posteriori *Anaplasma* PCR survey of May 2021 blood samples (before and at day 7 of antibiotic treatment) again revealed the presence of *Candidatus A. sparouinense*. No further blood sample was preserved; thus, the disappearance of the *Anaplasma* infection at the end of antibiotic treatment could not be confirmed.

### Conclusions

We characterized *Candidatus A. sparouinense* as a novel human intraerythrocytic pathogen. The infection arose over at least 18 months in a patient living in the rainforest of French Guiana who was potentially more susceptible because of a previous splenectomy. The phylogenetic proximity of *Candidatus A. sparouinense* to other *Anaplasma* associated with Amazon ticks and wild mammals highlights that a genetic cluster of *Anaplasma* is circulating in French Guiana and Brazil. These neotropical *Anaplasma* species might represent a source of novel infections to humans. Better documentation of the diversity and transmission cycles of *Anaplasma* in the Amazon rainforest is needed, as recently highlighted for other novel tickborne pathogens described in French Guiana (14,15).

### Acknowledgments

We thank the medical staffs of health centers in French Guiana, especially the staff of Grand Santi and the field team that collected the data (Louise Hureau-Mutricy, Audrey Godin, Mylène Cebe, and Alan Ribeiro).

The research was supported by funding from Investissements d'Avenir grants managed by the Agence Nationale de la Recherche (ANR, France, Laboratoire d'Excellence CEBA, ref. ANR-10-LABX-25-01).

### About the Author

Dr. Duron is an evolutionary ecologist in the MIVEGEC Research Unit, French National Centre for Scientific Research, France. His research interest includes the molecular study of tickborne microbes and their epidemiologic relevance.

## References

1. Rar V, Tkachev S, Tikunova N. Genetic diversity of *Anaplasma* bacteria: twenty years later. *Infect Genet Evol.* 2021;91:104833. <https://doi.org/10.1016/j.meegid.2021.104833>
2. Battilani M, De Arcangeli S, Balboni A, Dondi F. Genetic diversity and molecular epidemiology of *Anaplasma*. *Infect Genet Evol.* 2017;49:195–211. <https://doi.org/10.1016/j.meegid.2017.01.021>
3. Bakken JS, Dumler JS. Human granulocytic anaplasmosis. *Infect Dis Clin North Am.* 2015;29:341–55. <https://doi.org/10.1016/j.idc.2015.02.007>
4. Beyer AR, Carlyon JA. Of goats and men: rethinking anaplasmoses as zoonotic infections. *Lancet Infect Dis.* 2015; 15:619–20. [https://doi.org/10.1016/S1473-3099\(15\)70097-6](https://doi.org/10.1016/S1473-3099(15)70097-6)
5. Lu M, Li F, Liao Y, Shen J-J, Xu J-M, Chen Y-Z, et al. Epidemiology and diversity of Rickettsiales bacteria in humans and animals in Jiangsu and Jiangxi provinces, China. *Sci Rep.* 2019;9:13176. <https://doi.org/10.1038/s41598-019-49059-3>
6. Atif FA. Alpha proteobacteria of genus *Anaplasma* (Rickettsiales: Anaplasmataceae): epidemiology and characteristics of *Anaplasma* species related to veterinary and public health importance. *Parasitology.* 2016;143:659–85. <https://doi.org/10.1017/S0031182016000238>
7. Hollowell T, Reynolds RP. Checklist of the terrestrial vertebrates of the Guiana Shield. *Natl Mus Nat Hist MRC.* 2013;106.
8. Institut National de la Statistique et des Études Économiques (INSEE). Bilan démographique de Guyane 2018. Une croissance démographique toujours soutenue. Report no. 121. 2020 [cited 2021 Oct 7]. <https://www.insee.fr/fr/statistiques/4285434>
9. Douine M, Musset L, Corlin F, Pelleau S, Pasquier J, Mutricy L, et al. Prevalence of *Plasmodium* spp. in illegal gold miners in French Guiana in 2015: a hidden but critical malaria reservoir. *Malar J.* 2016;15:315. <https://doi.org/10.1186/s12936-016-1367-6>
10. Douine M, Mosnier E, Le Hingrat Q, Charpentier C, Corlin F, Hureau L, et al. Illegal gold miners in French Guiana: a neglected population with poor health [Erratum in: *BMC Public Health.* 2017;17:736]. *BMC Public Health.* 2017;18:23. <https://doi.org/10.1186/s12889-017-4557-4>
11. Douine M, Lambert Y, Galindo MS, Mutricy L, Sanna A, Peterka C, et al. Self-diagnosis and self-treatment of malaria in hard-to-reach and mobile populations of the Amazon: results of Malakit, an international multicentric intervention research project. *Lancet Reg Health Am.* 2021;4:100047.
12. Binetruy F, Buysse M, Lejarre Q, Barosi R, Villa M, Rahola N, et al. Microbial community structure reveals instability of nutritional symbiosis during the evolutionary radiation of *Amblyomma* ticks. *Mol Ecol.* 2020;29:1016–29. <https://doi.org/10.1111/mec.15373>
13. Calchi AC, Vultão JG, Alves MH, Yogui DR, Desbiez ALJ, De Santi M, et al. Ehrlichia spp. and Anaplasma spp. in Xenarthra mammals from Brazil, with evidence of novel 'Candidatus Anaplasma spp.'. *Sci Rep.* 2020;10:12615. <https://doi.org/10.1038/s41598-020-69263-w>
14. Binetruy F, Garnier S, Boulanger N, Talagrand-Reboul É, Loire E, Faivre B, et al. A novel *Borrelia* species, intermediate between Lyme disease and relapsing fever groups, in neotropical passerine-associated ticks. *Sci Rep.* 2020;10:10596. <https://doi.org/10.1038/s41598-020-66828-7>
15. Binetruy F, Buysse M, Barosi R, Duron O. Novel *Rickettsia* genotypes in ticks in French Guiana, South America. *Sci Rep.* 2020;10:2537. <https://doi.org/10.1038/s41598-020-59488-0>

---

Address for correspondence: Olivier Duron, Centre National de la Recherche Scientifique (CNRS), Laboratoire MiVEGEC, 911 Avenue Agropolis, 34394 Montpellier, France; email: [olivier.duron@cnrs.fr](mailto:olivier.duron@cnrs.fr)