



HAL
open science

Characterization of spatiotemporal couplings with far-field beamlet cross-correlation

Slava Smartsev, Sheroy Tata, Aaron Liberman, Michael Adelberg, Arujash Mohanty, Eitan Levine, Omri Seeman, Yang Wan, Eyal Kroupp, Ronan Lahaye, et al.

► **To cite this version:**

Slava Smartsev, Sheroy Tata, Aaron Liberman, Michael Adelberg, Arujash Mohanty, et al.. Characterization of spatiotemporal couplings with far-field beamlet cross-correlation. *Journal of Optics*, 2022, 11 (1), pp.180. 10.1088/2040-8986/ac9631 . hal-03795628

HAL Id: hal-03795628

<https://hal.science/hal-03795628v1>

Submitted on 17 Nov 2023

HAL is a multi-disciplinary open access archive for the deposit and dissemination of scientific research documents, whether they are published or not. The documents may come from teaching and research institutions in France or abroad, or from public or private research centers.

L'archive ouverte pluridisciplinaire **HAL**, est destinée au dépôt et à la diffusion de documents scientifiques de niveau recherche, publiés ou non, émanant des établissements d'enseignement et de recherche français ou étrangers, des laboratoires publics ou privés.



Distributed under a Creative Commons Attribution 4.0 International License

PAPER • OPEN ACCESS

Characterization of spatiotemporal couplings with far-field beamlet cross-correlation

To cite this article: Slava Smartsev *et al* 2022 *J. Opt.* **24** 115503

View the [article online](#) for updates and enhancements.

You may also like

- [Spatio-temporal couplings in ultrashort laser pulses](#)
Selcuk Akturk, Xun Gu, Pamela Bowlan et al.
- [Optical free-electron lasers with Traveling-Wave Thomson-Scattering](#)
Klaus Steiniger, Michael Bussmann, Richard Pausch et al.
- [A tilted pulse-front setup for femtosecond transient grating spectroscopy in highly non-collinear geometries](#)
A Battistoni, H A Dürr, M Gühr et al.




 EDINBURGH INSTRUMENTS

WORLD LEADING MOLECULAR SPECTROSCOPY SOLUTIONS

edinst.com

Characterization of spatiotemporal couplings with far-field beamlet cross-correlation

Slava Smartsev^{1,3,*} , Sheroy Tata^{1,3} , Aaron Liberman¹ , Michael Adelberg¹ , Arujash Mohanty¹ , Eitan Y Levine¹ , Omri Seemann¹ , Yang Wan¹ , Eyal Kroupp¹ , Ronan Lahaye² , Cédric Thaury²  and Victor Malka¹ 

¹ Department of Physics of Complex Systems, Weizmann Institute of Science, Rehovot 7610001, Israel

² LOA, CNRS, École Polytechnique, ENSTA Paris, Institut Polytechnique de Paris, 181 Chemin de la Hunière et des Joncherettes, Palaiseau 91120, Palaiseau, France

E-mail: slava.smartsev@weizmann.ac.il

Received 9 June 2022, revised 19 September 2022

Accepted for publication 29 September 2022

Published 14 October 2022



CrossMark

Abstract

We present a novel, straightforward method for the characterization of spatiotemporal couplings (STCs) in ultra-short laser pulses. The method employs far-field interferometry and inverse Fourier transform spectroscopy, built on the theoretical basis derived in this paper. It stands out in its simplicity: it requires few non-standard optical elements and simple analysis algorithms. This method was used to measure the space-time intensity of our 100 TW class laser and to test the efficacy of a refractive doublet as a suppressor of pulse front curvature (PFC). The measured low-order STCs agreed with ray-tracing simulations. In addition, we demonstrate a one-shot measurement technique, derived from our central method, which allows for quick and precise alignment of the compressor by pulse front tilt minimization and for optimal refractive doublet positioning for the suppression of PFC.

Keywords: spatiotemporal characterization, ultra-short laser pulses, far-field interferometry, inverse Fourier transform spectroscopy, pulse front tilt, pulse front curvature

(Some figures may appear in colour only in the online journal)

1. Introduction

For more than three decades, the use of chirped pulse amplification (CPA) has opened the frontier of high energy, ultra-short laser pulses [1]. When used in concert with other laser amplifier technologies, scientists have demonstrated CPA laser chains with peak powers in the gigawatt and even petawatt ranges, and have set their sights towards realizing exawatt class

lasers [2]. These intense, short laser pulses provide a powerful tool in a wide range of fields, and in particular in the study of laser–matter interaction in the relativistic regime [3].

In addition to temporally stretching the pulse, CPA laser chains typically include beam expanders, used to limit the fluence during the amplification stage, which are essential to mitigate unwanted nonlinear effects and avoid damage to the optical components. It is often more practical to use refractive as opposed to reflective beam expanders. However, since a broadband spectrum is necessary in order to achieve an ultra-short pulse, expansion using refractive lenses has the side effect of accumulating chromatic aberrations. This can significantly deteriorate the spatiotemporal properties of the pulse at focus. Thus, the use of refractive beam expanders is often limited to only the early stages of amplification, before the beam's diameter grows too large, when these undesirable

³ These authors contributed equally to the paper.

* Author to whom any correspondence should be addressed.



Original Content from this work may be used under the terms of the [Creative Commons Attribution 4.0 licence](https://creativecommons.org/licenses/by/4.0/). Any further distribution of this work must maintain attribution to the author(s) and the title of the work, journal citation and DOI.

effects are minimized. Even with perfect alignment, a conventional beam expander that utilizes the same glass for both lenses introduces a specific spatiotemporal coupling (STC), known as pulse front curvature (PFC). The part of the beam that travels across the optical axis is delayed more than others since it accumulates a larger group delay. The relative delay scales quadratically with the beam size [4, 5], which makes it especially relevant for large diameter high-intensity beams. This leads to a curved pulse front that is radially symmetrical across the beam. In addition to PFC, a spatially varying group delay dispersion (GDD) is introduced, broadening the pulse in time non-uniformly across the beam. This can be an important effect for pulses having a duration much shorter than 25 fs. Also, in real systems, due to imperfections in optical components and misalignment of beam expanders and stretcher–compressor pairs, other STCs are introduced, such as pulse front tilt (PFT) or/and spatial chirp [6]. The STCs mentioned above are the most dominant and are known as low order STCs. However, in real CPA laser systems more exotic types of STCs may arise. Among them are complex chromatic spatial phase aberrations induced by defects in the compressor optics and spatially non-uniform spectral composition due to pump depletion during amplification in a saturated regime [6, 7].

In most cases, any STCs are undesirable because they increase pulse duration and reduce peak intensity and contrast at the focus [8–10]. However, in some cases, one can exploit STCs in a controlled and intricate way to manipulate the dynamics of the intense pulses at the focal region [11, 12]. Control over the velocities of energy depositions along the focal region through the sculpting of customized STCs enables novel experiments in Raman amplification and ionization waves [13, 14] and paves the way toward a new generation of laser-driven particle accelerators [15–17]. Techniques for accurate and straightforward measurement of STCs lie at the heart of our ability to mitigate unwanted couplings and enable the use of STCs as a critical degree of freedom in an experiment.

In parallel to state-of-the-art temporal metrology development [18–20], significant progress has been made in measuring STC during the last decades. The development of spatio-temporal metrology is well summarized in reviews [6, 21, 22], while the cutting edge work is presented in recent papers [23–25]. Some of these state-of-the-art techniques provide the complete spatiotemporal characterization of near-visible femtosecond laser beams. The cost, in most cases, is complex optical setups and heavy post-processing algorithms, which makes it challenging to use them on a regular basis. Other STC measurement techniques sacrifice completeness for the sake of simplicity, and are typically limited to spatially varying pulse front delay measurement (first order spectral phase).

This article demonstrates a straightforward method to measure STC that is based on far-field interferometry and inverse Fourier transform spectroscopy. With this method we measure the beam's group delay and temporal width at a discrete set of points along the beam with different radial and angular coordinates. The method is conceptually simple,

analytically solvable, and has a very simple experimental procedure. The optics required for it, with the exception of the delay mirror and the laser-cut beamlet selector described below, are standard optics found in almost any ultra-short laser system. In addition, the method has a very minimal footprint and, thus, minimally disturbs the general setup of the experiment. This approach can accurately ascertain the pulse front in time and space together with the spatially-varying pulse duration. We demonstrate the efficacy of this technique by characterizing the spatio-temporal intensity profile of the 25 fs 100 TW laser at Weizmann Institute of Science (WIS) [26], and extracting the values of the PFT, PFC, and spatially-varying temporal duration. We show that for our system, higher order STCs have a negligible effect on the intensity. In addition, using this measurement technique, we investigate the performance of a refractive doublet, which we refer to as the 'PFC compensator', as a means to suppress unwanted PFC.

2. Far field beamlet cross-correlation STC measurement

The proposed method is self-referenced and based on linear field cross-correlation (also known as inverse Fourier transform spectroscopy) [5, 27, 28]. Similar to other spatially resolved Fourier transform techniques [27, 28], it uses a small diameter central portion of the beam as a reference (reference beamlet). However, instead of spatially expanding the reference beamlet to the full beam size and comparing temporally in the near field, our method 'directly' compares the reference beamlet with test beamlets in the far-field, similar to far-field slits interferometry [29, 30]. It significantly reduces the complexity of the optical setup and alignment since it relies on focusing optics and focal spot imaging, which are usually already part of the optical setup.

The far-field beamlet cross-correlation is performed as follows: first, the two near-field beamlets, selected by means of a special mask, are focused and form an interference pattern in the far-field. Second, the beamlet pair is cross-correlated by changing the delay of the reference beamlet by a piezo actuator attached to the central portion of the mirror. Finally, the fringe contrast envelope as a function of delay is used to compare the beamlets temporarily. The contrast envelope's maximum corresponds to zero group delay (synchronization) between the beamlets while the contrast width reveals the temporal broadening, which can be caused by the second-order relative spectral phase (GDD). Repeating this cross-correlation for test beamlets at different spatial locations reveals the STC for the entire beam. The advantage of the method is that the spatial resolution of the STC measurement could be easily adjusted if needed. Usually, there are low order STCs; therefore, total scanning time could be reduced by picking a proper spatial resolution of the measurement.

This technique allows for the measurement of STC for beams with custom spatial beam shaping that result in intricate spatial aberrations. It is well suited for the direct measurement of the group velocity of the intensity peak for long focal depth optics, such as axiparabola experiments, which have a large amount of controlled spherical aberration [31, 32].

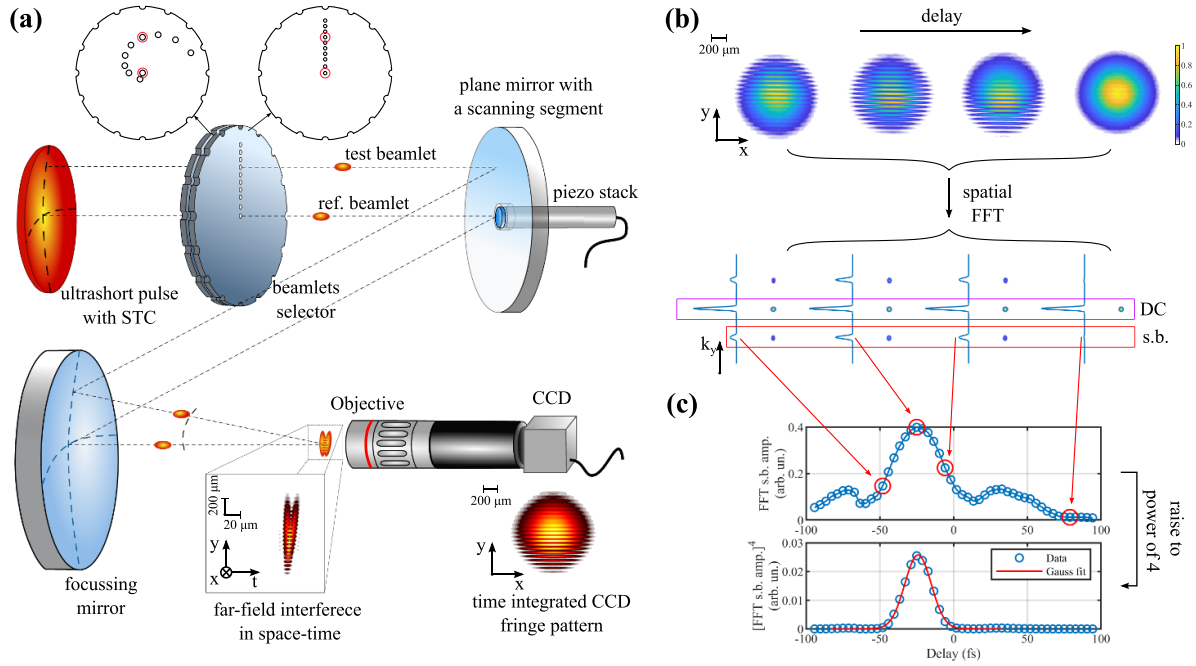


Figure 1. Simplified setup and analysis flow. (a) Large diameter ultrashort laser pulse with STC impinges on beamlet selector, which splits the large beam into two small beamlets: test and reference. The reference beamlet stays on an optical axis and is delayed with a mirror attached to a piezo stack. Both beamlets are focused with a parabolic mirror, imaged by a microscope objective, and interfere on the CCD sensor. (b) Selected experimental fringe patterns for different delays of one beamlet pair. (c) (top) Fringe visibility as a function of delay is calculated using spatial FFT through the value of the side-band (s.b.) with respect to the DC value; (bottom) the side-band value is raised to the fourth power and fitted with a Gaussian.

3. Experimental setup

We measured the STC of the HIGGINS Ti:sapphire 2×100 TW laser system at the WIS, which delivers two 25 fs pulses with an energy up to 2.3 J per beam at a repetition rate of 1 Hz and a beam diameter of 60 mm in transport. Figure 3 shows the near field intensity profile as well as the radially averaged intensity fit of an X - Y cross section. The measurement was taken with grid paper over the mirror and the fit was numerically adjusted to reflect this. The spectrum of the laser has a double peak shape (see figure A2) and is centered around 800 nm (or 375 THz in frequency), with a spectral width of 40 nm at full width at half maximum (FWHM). We measured the STC of both laser beams and obtained similar results; therefore, we will present results for one beam (B1). The simplified experimental setup used for the beamlet cross-correlation STC measurement is depicted in figure 1(a). Fully amplified, attenuated, and compressed laser pulses impinge on the beamlet selector mask, which consists of two perforated disks. The orientation of the discs allows for the selection of the test beamlet from a discrete set of radial and angular positions while the reference beamlet passes through the central hole (see appendix ‘Beamlet selector’). The 2.65 mm size of the perforations was selected in order to optimize between the larger diffraction effects that come with smaller mask holes and subsequent propagation of over 1 m before focusing and the lesser uniformity of STCs across the beamlet and decreased spatial measurement resolution that comes with larger holes.

In the case shown in figure 1(a) the test beamlet is 27 mm apart from the reference beamlet. After the selector, the two beamlets are reflected at a 45° angle from a special segmented plane mirror. This mirror has a center cutout where a small movable mirror attached to a piezo actuator is installed (see appendix ‘Delay mirror’). The reference beamlet is reflected from this actuated mirror, allowing for precise control over the delay between the beamlets. The delay scales with the modified optical pathway of the reference beam, with a geometric factor that arises from the angles of reflection (see appendix ‘Delay mirror’). Then, the beamlets are focused with a 2 m focal length off-axis parabola ($f/33$), and are imaged to a 16-bit charge-coupled device (CCD) camera with a microscope objective.

The interference patterns, shown in figure 1(a), correspond to a 25 fs delay between the beamlets. Since the test beamlet has a slightly different k -vector and is delayed with respect to the reference, the interference pattern is not symmetric. More visible fringes appear at the region of better overlap in space-time. The space-time interference is shown for the case when the two beamlets are perfectly compressed (no global GDD). However, the time-integrated fringe pattern will not change in the case of global GDD being applied on both beamlets. For each beamlet pair, a set of measurements with varying delays is taken and the process is repeated for different test beamlets. An example of this data analysis sequence is shown in figure 1(b). First, interference signals are processed to remove the background and crop the image to keep the main lobe; then, a standard spatial fast Fourier transform (FFT) is

applied, yielding a signal with a DC term and two sidebands. The highest overall contrast of the fringe pattern corresponds to the highest value of the sideband. The relative amplitude of the sideband with respect to the DC peak is extracted and plotted as a function of delay in figure 1(c) (top). This plot represents the beamlets' cross-correlation envelope. Finally, we raise the cross-correlation to the fourth power to match the width of the transform limited pulse as shown in section 5 and fit it to a Gaussian. The Gaussian fit parameters such as delay and width provide the relative first and second-order spectral phase of the test beamlet with respect to the reference; from these measurements, the pulse front and temporal width of the intensity along the beam is reconstructed.

4. Experimental results and discussion

In the experiment, we measured the STC of one of our laser beams (B1) in two cases. The first is with the STC that results from our laser chain and the second is with the addition of a specially designed doublet lens to correct laser chain accumulated PFC [33, 34]. The doublet, which is placed in the middle of the final beam expander, allows for the tuning of PFC by adjusting its position in the diverging beam that is in the expander [35]. For more details about the doublet we use, please see appendix 'Laser chain STC simulation'.

For each case (uncorrected and doublet corrected), we scanned 36 pairs of beamlets with 50 delay steps at a 1 Hz rate. Beamlet switching took no more than 10 s; therefore, the total scan time was around 36 min. The total data processing using a desktop computer with a dual Intel Xeon processor @ 2.2 GHz and 64 Gb RAM took 13 min. As can be seen, we sampled much more than needed for the low order fit we used in each scan; both in temporal—50 delay steps—and in spatial—36 beamlets pairs—resolution. The total time with optimized sampling and optimized spatial resolution could be reduced for the same final result.

4.1. Pulse front delay measurement

We performed beamlet cross-correlation across the X - Y plane of the beam in 4 mm steps and took four additional points between the X - Y axes in the near field. As we have shown analytically in section 5, equation (21) a Gaussian approximation of the beamlet cross-correlation raised to the fourth power has the functional form:

$$\exp\left(-\frac{1}{2\sigma_{bc4}^2}\tau_1^2\right) \quad (1)$$

where τ_1 is the group delay between the beamlets and σ_{bc4} is the width of the correlation raised to the fourth power. We plot the fit extracted τ_1 as a function of the test beamlet near-field position X - Y in figure 2 for both the uncorrected and corrected PFC cases. The vertical size of the data points (or black vertical solid lines on x - y cross-sections) are the 95%

confidence bounds of the fit. To test the stability of our measurement, we compared data for the $|x|, |y| = 20$ mm points from the beginning, middle, and end of the scan. As can be seen, these data points nearly coincide within the measurement error showing that the pointing stability and spatial jitter were sufficiently small to allow for reliable measurement. Significant stability and jitter issues would affect the measurement, in part by measuring a different part of the beam than expected by the measurement. Next we fit the pulse front delay data to low order polynomials to extract the corresponding PFT and PFC for both cases. The fit function was $\tau_1(x, y) = \tau_0 + \text{PFT}_x x + \text{PFT}_y y + \text{PFC}(x^2 + y^2)$. The fit surface is plotted with the data points, its color encoded with radially averaged intensity (intensity obtained from figure 3). As can be seen in table 1, our laser pulse front is dominated by PFC (no doublet case), which is to be expected since we used only refractive telescopes before compression. It can also be seen that the corrective doublet successfully suppressed the PFC by more than one order of magnitude.

It is worth noting that before this experimental run, the PFT and the PFC of the corrected case were optimized by grating alignment and doublet longitudinal positioning, respectively, using a fast measurement procedure based on beamlet interference. This will be discussed in detail later.

4.2. Temporal pulse width measurement

The next step is to evaluate the spatially-varying temporal width. For this purpose we utilize the beamlet cross-correlation width σ_{bc4} . As we have shown in section 5, equation (22) the width is composed of three terms:

$$\sigma_{bc4}^2(x, y) = \frac{1}{2c_B^2} + \frac{x^2 + y^2}{8\sigma_0^2\omega_c^2} + \frac{c_B^2\beta_r(x, y)^2}{8}. \quad (2)$$

The first term is the transform-limited width which is inversely proportional to the spectral bandwidth c_B . The second is a geometric term that broadens the cross-correlation as the distance $\sqrt{x^2 + y^2}$ between the beamlets in the near-field grows and is inversely proportional to the size of the beamlets in the near-field σ_0 and the central laser frequency ω_c . This term stems for the fact that the k -vectors of the beamlets differ because of the distance between them in the near-field. Finally, the third term stretches the cross-correlation when the test beamlet broadens relative to the reference beamlet. We shall assume that the relative GDD $\beta_r(x, y)$ is the cross-correlation broadening source. In general, it could include relative spectral narrowing and/or relative spectral phase of higher order than GDD. The measurement is insensitive to global GDD and thus GDD absence needed to be independently verified by Wizzler measurements (shown in appendix 'Beamlets cross-correlation spectrum and deconvolution factor') at the central part of the beam in near-field as required by inverse Fourier spectroscopy for full space-time reconstruction.

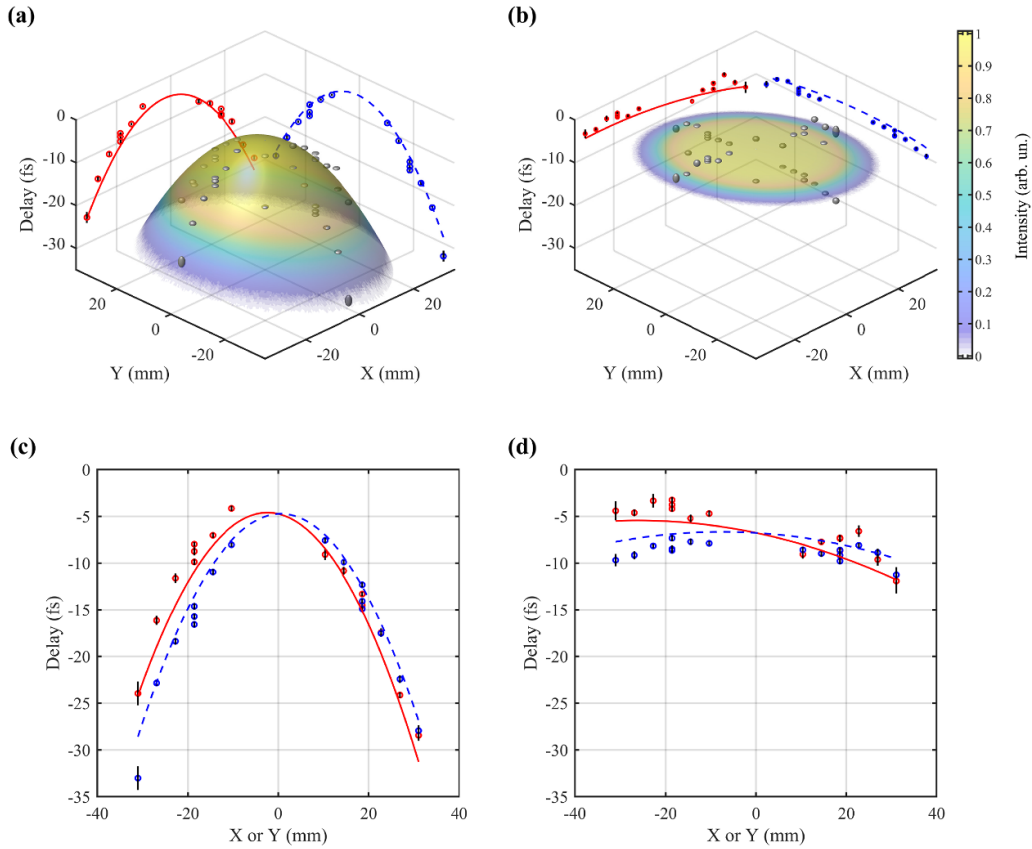


Figure 2. Measured pulse front delay across the beam and corresponding semi-transparent fitted surfaces. (a), (c) Uncorrected case and (b), (d) corrected case with the doublet. The beam intensity is encoded in the color of the surface. The x – y cross-sections of data points and surfaces are shown in (c) and (d), and in the corresponding planes of (a) and (b).

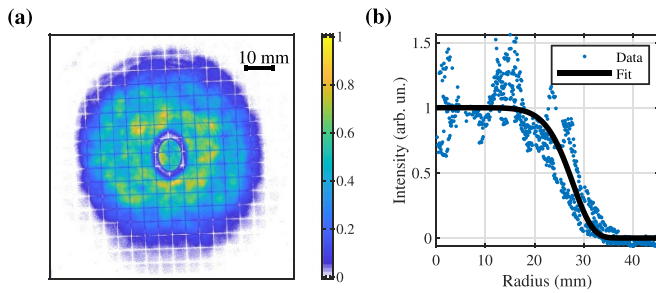


Figure 3. (a) Near field intensity profile. (b) Radial fit for intensity X – Y cross-sections.

Our laser has a double peak rather than a Gaussian spectrum assumed in the analytical model; therefore the beamlets’ cross-correlation width σ_{cb4} is narrower than the temporal intensity width by a factor of $d = 1.27$ as we show in [appendix ‘Beamlets cross-correlation spectrum and deconvolution factor’](#). The final spatially varying temporal width is obtained by removing the geometrical term in equation (2) (using $\omega_c = 2.36 \times 10^{15} \text{ rad s}^{-1}$, and $\sigma_0 = 1.1 \text{ mm}$, which corresponds to the beamlet FWHM in the near field: $\text{FWHM}_0 = 2.65 \text{ mm}$) and re-scaling by the deconvolution factor d . We plot intensity temporal width (FWHM) as a function of the test beamlet position X – Y in figure 4 for PFC uncorrected and

Table 1. Extracted fit parameters for low-order pulse front delay for uncorrected and corrected cases.

	No doublet	With doublet
$\text{PFT}_x \text{ (fs mm}^{-1}\text{)}$	-0.114 ± 0.048	-0.102 ± 0.039
$\text{PFT}_y \text{ (fs mm}^{-1}\text{)}$	0.027 ± 0.048	-0.029 ± 0.039
$\text{PFC (fs mm}^{-2}\text{)}$	-0.0239 ± 0.0028	-0.0019 ± 0.0023

corrected cases. The vertical size of the data points (or black vertical solid lines on x – y cross-sections) are the 95% confidence bounds of the fit. Then we fit the data to low order polynomials $\text{FWHM}(x, y) = \text{FWHM}_0 + L_x x + L_y y + Q(x^2 + y^2)$, the coefficients of which are provided in table 2.

From the results depicted in table 2 we can see that in both uncorrected and corrected cases, the beam has a transform-limited width of approximately 25 fs at the center, which assumes perfect compression verified by independent Wizzler measurements. The width grows slightly from the center toward the beam’s edge. For example—using only quadratic slope—at a distance $r = 30 \text{ mm}$ from the center, the width grows by 2 and 4 fs for the uncorrected and corrected cases, respectively. This, in turn, implies a temporal broadening corresponding to a relative GDD of 95 and 135 fs^2 . These relative GDD values are higher than predicted from the ray-tracing simulation (see [appendix ‘Laser chain STC simulation’](#));

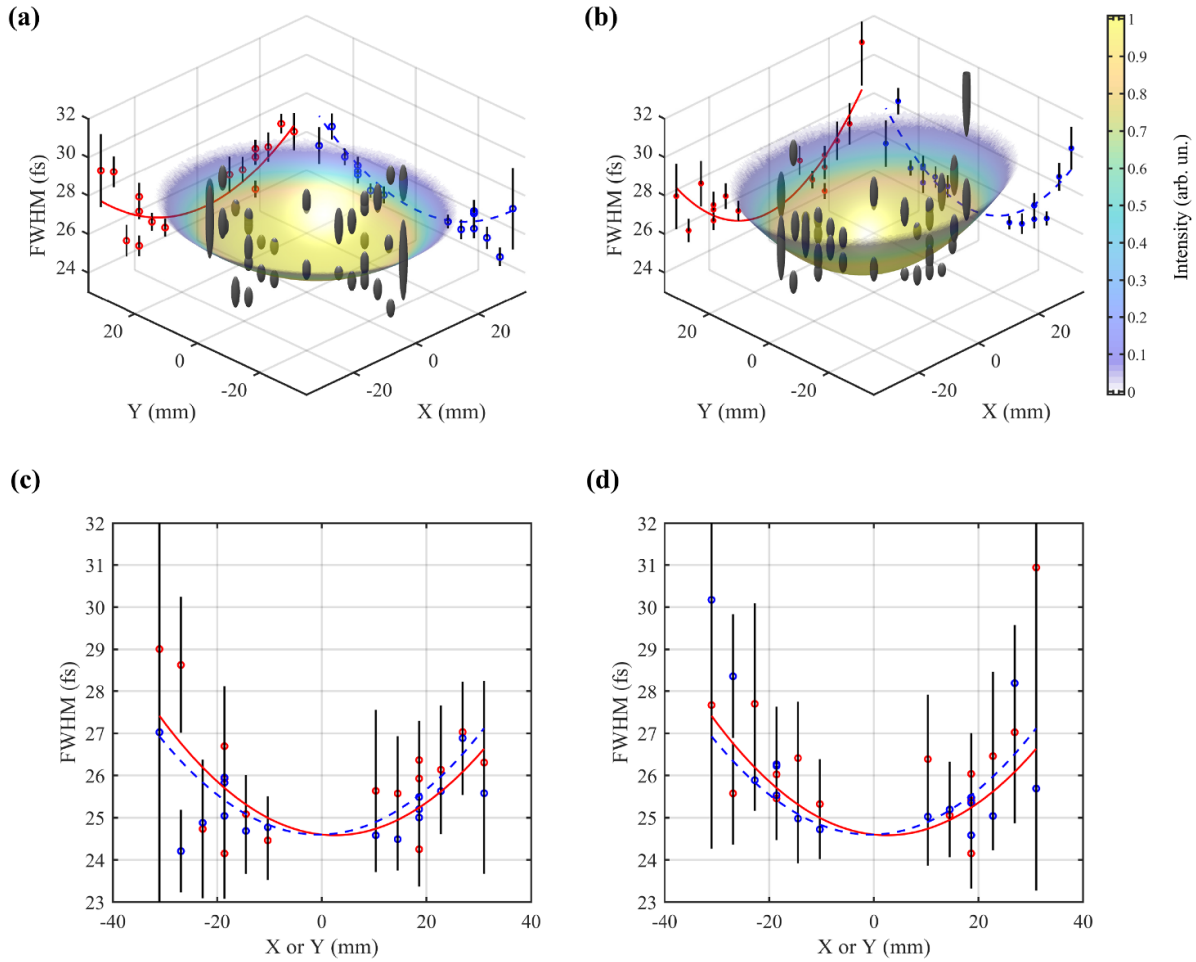


Figure 4. Measured near-field intensity temporal width across the beam and corresponding semi-transparent fitted surfaces. (a), (c) Uncorrected case and (b), (d) corrected case with the doublet. The beam intensity is encoded in the color of the surface. The x - y cross-sections of data points and surfaces are shown in (c) and (d), and in the corresponding planes of (a) and (b).

Table 2. Extracted fit parameters for pulse width for uncorrected and corrected cases.

	No doublet	With doublet
FWHM_0 (fs)	24.6 ± 0.64	24.46 ± 0.68
L_x (fs mm $^{-1}$)	-0.013 ± 0.022	0.0063 ± 0.0231
L_y (fs mm $^{-1}$)	0.0031 ± 0.022	-0.0247 ± 0.0231
Q (fs mm $^{-2}$)	0.0025 ± 0.0013	0.0040 ± 0.0014

however, additional broadening could be explained by spectral narrowing toward the beam’s edge.

4.3. PFC focal spot simulation

Next, we used the measured STC parameters to evaluate spatiotemporal intensity at the far-field by numerical simulation. For simplicity, we used relative GDD as the only broadening source estimated from the quadratic slopes in table 2. Cross-sections of the simulated space-time intensity profiles are shown in figure 5; Columns (a), (c), (f) and (b), (d), (g) correspond to doublet uncorrected and corrected cases, with row (a), (b) corresponding to near-field, row (c), (d), (e) to

the far-field spatiotemporal intensity, and row (f), (g), (h) corresponding to time-integrated intensity. As can be seen in the near-field intensity cross-section along the optical axis in (e), the PFC, which is dominant in the uncorrected case, reduced the peak intensity by a factor of 1.15 from the corrected case. The temporal width of the uncorrected case was larger by a factor of 1.04. Thus, as can be seen from time-integrated far-field intensity cross-sections (h), the larger PFC term in the uncorrected case reduced the focal spot intensity of the beam by a factor of 1.12.

4.4. One-shot PFT measurement technique

As mentioned above, prior to data gathering with the scanning STC measurement method described in this paper, a one-shot measurement technique was used to align the optics to minimize PFT and to eliminate PFC in the corrected PFC case. We demonstrate this technique for the case of fast PFT measurement. A similar measurement of PFC would differ only in the mask used. This one-shot technique is based on beamlet delay which is extracted directly from the internal structure of the far-field interference (similar to far-field slits interferometry [29, 30]). For this, we use a modified beamlets selector (‘PFT

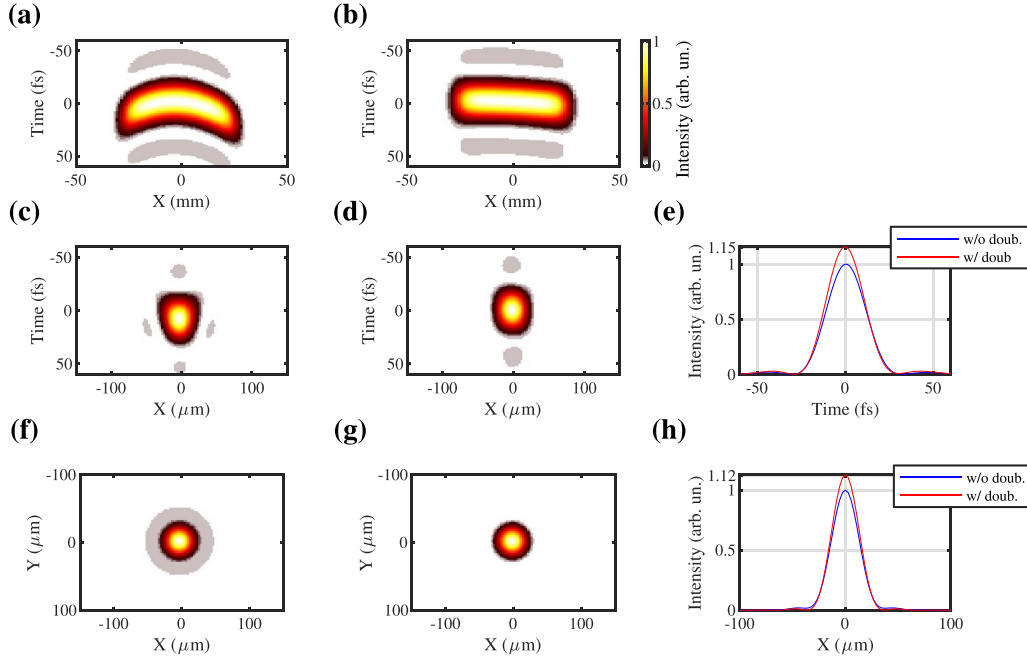


Figure 5. Simulated spatiotemporal intensity cross-sections at near (a), (b) and far-field (c), (d) based on measured STC parameters, with time-integrated far-field intensities (f), (g). Columns (a), (c), (f) and (b), (d), (g) correspond to uncorrected and doublet corrected cases, respectively. (e) Far-field intensity along the time axis. (h) Far-field time-integrated intensity along the X-axis.

tool’), a mask which selects two symmetrical off-axis beamlets (see appendix ‘Beamlet selector’). As we show in section 5, equation (12), the interference of two beamlets that are separated by $\pm x_1$ from the axis results in a pattern that has a particular structure. If two beamlets have no delay between them (no PFT) the pattern is symmetric. However, in the case of a delay of $2\tau_1$ between them (such that the $PFT = \tau_1/x_1$) the internal structure of the fringe is shifted by $\xi_1 = \tau_1 cf/x_1$ with respect to the main envelope. Therefore to evaluate the PFT it is sufficient to determine the shift of the internal fringe peak ξ_1 in the far field. From the shift, we extract the value of the PFT: $PFT = \xi_1/cf$, where c is speed of light in vacuum and f is the focal distance of the focusing optics.

We evaluate PFT for the corrected case and choose beamlets which are located close to the beam’s edge ($2|x_1| = 54$ mm), symmetrically from the beam center. The interference patterns for the Y and X axes, shown in logarithmic scale, are depicted in figures 6(a) and (b) and their corresponding cross-sections are in (c) and (d). It can be seen that the internal fringe envelope in X-axis is shifted by approximately $90 \mu\text{m}$, while the fringe pattern along the Y-axis is nearly symmetric. This corresponds to $|PFT_x| = 0.15 \text{ fs mm}^{-1}$ and $|PFT_y| = 0$ which in a good agreement with values obtained in the scan (see the second column of the table 1). In addition, the transverse position of the doublet affects the PFT of the beam; we placed it at a transverse position inside the beam expander such that it closely matched the PFT of the uncorrected case.

In the PFC case, we used the same beamlet selector used in the robust method, which selects one central and one off axis beamlet. Then, by symmetrizing the fringe pattern, similarly to the PFT tool alignment, we minimized PFC by optimizing the

longitudinal doublet position inside the beam expander. However, in the case of PFC, this measurement is more sensitive to the misalignment of the mask with respect to the beam, and thus careful alignment is required.

5. Analytical model

The analytical derivation for beamlet cross-correlation is derived in 1D for simplicity. We describe a system in which an ultra-short beam with STC impinges on a perforated mask with two holes, one in the center and another in position x_1 . For simplicity, the beamlets are assumed to be Gaussian in space, with width σ_0 . The complex spectral amplitude of the two beamlets after the mask is:

$$A(x, \omega) = A_0(\omega) \exp\left(-\frac{x^2}{2\sigma_0^2}\right) + A_1(\omega) \exp\left(-\frac{-(x-x_1)^2}{2\sigma_0^2}\right). \quad (3)$$

We assume that intensity and STC are slowly varying along the beam and, therefore, the spectral and spatial dependencies of each beamlet are separable. The spectral dependence of the beamlets is described by a Gaussian spectrum centered around ω_c with a bandwidth c_B . The ‘global’ spectral phase which is the same for both beamlets is omitted because it will be canceled out in cross-correlation. We consider the relative linear spectral phase, which, in the time domain, is the relative delay between the beamlets and is labeled as τ_1 . The spectral dependencies of the beamlets are:

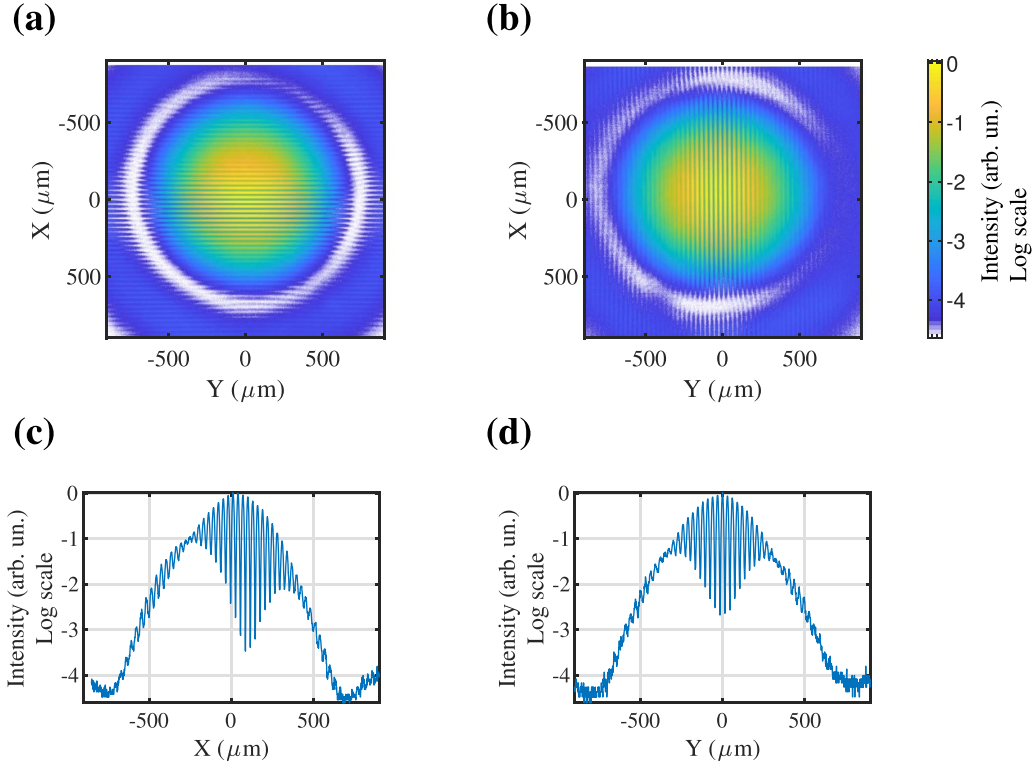


Figure 6. Beamlets interference patterns used to evaluate PFT of the beam along X-axis (a) and Y-axis (b) and their corresponding cross-sections (c) and (d).

$$A_0(\omega) = \exp\left(-\frac{(\omega - \omega_c)^2}{2c_B^2}\right) \quad (4)$$

$$A_1(\omega) = RA_0(\omega) \exp(i\tau_1(\omega - \omega_c)) \exp(i\tau_1(\omega_c)). \quad (5)$$

The $i\tau_1(\omega - \omega_c)$ is the phase which corresponds to a group delay between the beamlets, where $i\tau_1(\omega_c)$ is the constant phase difference between the beamlets. $R = |A_1(\omega)|/|A_0(\omega)|$ is the relative amplitude, which accounts for the fact that the beamlets are generated from a beam which has a non-uniform spatial profile. We omit, for simplicity, specifying the complex conjugate terms needed for accurate mathematical description of the pulses in time and frequency.

To calculate the complex spectral field of the beamlet pair on the focal plane we use the Fraunhofer integral [36]

$$A_f(\xi, \omega) = \int \omega \frac{\exp(ikf)}{i2\pi cf} \exp\left(ik\frac{\xi^2}{2f}\right) A(x, \omega) \exp\left(-ik\frac{x\xi}{f}\right) dx \quad (6)$$

where $k = \omega/c$ is the k -vector, f is the focal distance of the focusing optics, and x, ξ are the coordinates in the near and far fields respectively. The spatial integral over the x coordinate reduces to a Gaussian (Fourier transform of a Gaussian is a Gaussian). The x_1 shift of the off-centered beamlet corresponds to a linear phase in the far field. For simplicity, we assume a narrow spectral bandwidth $c_B/\omega_c \ll 1$ so that

the spatial dependence is dictated by a central wavelength $k \rightarrow k_c$:

$$A_0 : \int \exp\left(\frac{x^2}{2\sigma_0^2}\right) \exp\left(-ik\frac{x\xi}{f}\right) dx \propto \exp\left(-\frac{k_c^2\sigma_0^2}{2f^2}\xi^2\right) \quad (7)$$

$$A_1 : \int \exp\left(\frac{(x-x_1)^2}{2\sigma_0^2}\right) \exp\left(-ik\frac{x\xi}{f}\right) dx \propto \exp\left(-\frac{k_c^2\sigma_0^2}{2f^2}\xi^2\right) \times \exp\left(-\frac{ix_1k_c}{f}\xi\right). \quad (8)$$

The first terms in the Fraunhofer integral can be omitted since they do not affect the final result: $\omega/2\pi cf$ is constant under the narrow bandwidth approximation, and the phase terms $\exp(ikf)/i$ and $\exp(ik\xi^2/2f)$ disappear when moving from field to intensity. The final expression is

$$A_f(\xi, \omega) \propto \exp\left(-\frac{(\omega - \omega_c)^2}{2c_B^2}\right) \times \left[1 + R \exp\left(i\left[(\omega - \omega_c)\tau_1 + \omega_c\tau_1 - \frac{x_1k}{f}\xi\right]\right)\right] \times \exp\left(-\frac{k_c^2\sigma_0^2}{2f^2}\xi^2\right). \quad (9)$$

Therefore the complex field in space-time in the far field is

$$A_f(\xi, t) = \int \exp(i\omega t) A_f(\xi, \omega) d\omega. \quad (10)$$

It can be proved that, up to constants, the far field intensity integrated over time is

$$I_f(\xi) = \int |A_f(\xi, t)|^2 dt = \exp\left(-\frac{\sigma_0^2 \omega_c^2}{c^2 f^2} \xi^2\right) \times \left[\frac{1+R^2}{2} + R \exp\left(-\frac{c_B^2}{4} \left(\tau_1 + \xi \frac{x_1}{cf}\right)^2\right) \times \cos\left(\omega_c \left[\tau_1 + \xi \frac{x_1}{cf}\right]\right) \right]. \quad (11)$$

A closer look at the final expression shows that it corresponds to a localized fringe pattern with an internal structure. The first exponent determines the overall envelope, which is Gaussian. The internal structure consists of fringes with spatially varying contrast. The fringe spacing is determined by the argument inside of the cosine: the k -vector difference between the test and reference beamlets. The fringe contrast shape is determined by the second Gaussian exponent which has the delay τ_1 in the argument.

It is easy to extend this result to obtain the equation of far field intensity (equation (11)) for two beamlets which are separated symmetrically from the optical axis at $-x_1$ and x_1 , having delay $-\tau_1$ and τ_1 (as is the case with the ‘PFT tool’):

$$I_{f\text{sym}}(\xi) = \int |A_{f\text{sym}}(\xi, t)|^2 dt = \exp\left(-\frac{\sigma_0^2 \omega_c^2}{c^2 f^2} \xi^2\right) \times \left[\frac{1+R^2}{2} + R \exp\left(-c_B^2 \left(\tau_1 + \xi \frac{x_1}{cf}\right)^2\right) \times \cos\left(2\omega_c \left[\tau_1 + \xi \frac{x_1}{cf}\right]\right) \right]. \quad (12)$$

It is convenient to perform a spatial Fourier transform of the fringe pattern intensity $I_f(\xi)$ over the spatial coordinate ξ . The reciprocal coordinate (or spatial frequency) is labeled k_ξ

$$\tilde{I}_f(k_\xi) = F(I_f(\xi)). \quad (13)$$

As expected the Fourier transform of the intensity fringe pattern (which has no phase by definition) consists of a DC peak and two sidebands. It could be shown that the normalized spatial Fourier transform of the fringe pattern is:

$$\tilde{I}_f(k_\xi) = \exp(a_{DC}) + \Gamma_{SB} [\exp(a_{SB1}) + \exp(a_{SB2})] \quad (14)$$

where

$$a_{DC} = -\frac{c^2 f^2 k_\xi^2}{4\sigma_0^2 \omega_c^2} \quad (15)$$

$$a_{SB1,2} = -\frac{[c_B \tau_1 \sigma_0 \omega_c]^2 + (cfk_\xi \pm \omega_c x_1)^2 + i\tau_1 [x_1 c_B^2 cfk_\xi \mp 4\sigma_0^2 \omega_c^3]}{4\sigma_0^2 \omega_c^2 + c_B^2 x_1^2}. \quad (16)$$

As we can see, the amount of group delay τ_1 between the beamlets is present in the argument of the exponent of the sidebands, affecting the amplitude and the phase.

The relative amplitude of the side-bands is

$$\Gamma_{SB} = \frac{R}{(1+R^2) \sqrt{1 + \frac{c_B^2 x_1^2}{4\sigma_0^2 \omega_c^2}}}. \quad (17)$$

To invert the relation, we solve the quadratic equation and get

$$R = \frac{1 - \sqrt{1 - \Gamma_{SB}^2 \left(4 + \frac{c_B^2 x_1^2}{\sigma_0^2 \omega_c^2}\right)}}{\Gamma_{SB} \sqrt{4 + \frac{c_B^2 x_1^2}{\sigma_0^2 \omega_c^2}}}. \quad (18)$$

If we look at the maxima of the sidebands, located at $|cfk_\xi \pm \omega_c x_1| = 0$, they have a Gaussian dependence on the delay. The delay τ_1 is composed of the delay from the STC and from the delay imposed by the piezo actuator. In other words, when τ_1 is zero, the two beamlets are synchronized. Therefore, scanning the delay with a piezo and finding the maximum reveals the STC delay. The Gaussian dependence is shown below:

$$\exp\left(-\frac{1}{2\left(\frac{2}{c_B^2} + \frac{x_1^2}{2\sigma_0^2 \omega_c^2}\right)} \tau_1^2\right) = \exp\left(-\frac{1}{2\sigma_{fc}^2} \tau_1^2\right). \quad (19)$$

Under this Gaussian approximation, when the temporal width of the two beamlets is the same, their cross-correlation at $x_1 = 0$ —which is equivalent to the autocorrelation—is twice as large as the intensity of the transform limited pulses $\sigma_{TL}^2 = 1/2c_B^2$, which agrees with the field autocorrelation theorem [37]. Per the same theorem, our measurement is insensitive to a common phase between the two beamlets. Thus, this method cannot measure global spectral phase such as global GDD.

However, relative spectral phase (or relative spectral narrowing) which broadens the pulse can be estimated. Assume relative GDD $\beta_r(x_1)$, which broadens only one of the beamlets. It can be shown that the beamlet cross-correlation takes the form

$$\exp\left(-\frac{1}{2\sigma_{bc}^2} \tau_1^2\right) = \exp\left(-\frac{1}{2\left[\frac{2}{c_B^2} + \frac{x_1^2}{2\sigma_0^2 \omega_c^2} + \frac{c_B^2 \beta_r(x_1)^2}{2}\right]} \tau_1^2\right). \quad (20)$$

In order to get the pulse intensity in time we raise the cross-correlation to the fourth power so that we get the same width as for a transform limited intensity pulse:

$$\exp\left(-\frac{1}{2\sigma_{bc}^2} \tau_1^2\right)^4 = \exp\left(-\frac{1}{2\sigma_{bc4}^2} \tau_1^2\right) \quad (21)$$

$$\sigma_{bc4}^2 = \frac{1}{2c_B^2} + \frac{x_1^2}{8\sigma_0^2 \omega_c^2} + \frac{c_B^2 \beta_r(x_1)^2}{8}. \quad (22)$$

The width squared of the beamlet cross-correlation raised to the fourth power, σ_{bc4}^2 , consists of three terms: the transform limited $\sigma^2 = 1/2c_B^2$, a geometric broadening factor and a relative GDD broadening factor.

6. Conclusions and outlook

In this paper, we presented a novel STC measurement technique based on beamlet cross-correlation that we used to characterize the spatiotemporal pulse front of our 100 TW laser. We found that our laser pulse front is dominated by PFC, which reduces the peak intensity at the focus. A specially designed doublet was shown to almost completely suppress the PFC. In addition, we introduced fast, one-shot pulse front measurement tools based on the beamlet's interference in the far-field. With the aid of these tools, we aligned the compressor to minimize PFT in x - y and found the optimal position of the corrective doublet for suppressing the PFC.

The advantage of the proposed method is its simplicity: it is straightforward to understand, relies on conventional optics—with the exception of the beamlet selector and the delay mirror—and is based on a standard 'focal spot' diagnostic. As we show with our analytical model, the method has straightforward post-processing, which can be easily implemented from scratch. The method allows for the direct measurement of the spatiotemporal pulse front and spatially varying pulse duration, without the need to rely on iterative algorithms. In addition, the method is not intrusive and is easily scalable for various beam sizes, and can thus be implemented in nearly any optical setup.

The usage of this method in temporally comparing beamlets along the focal line allows for the measurement of the group velocity of the energy deposition of optics with extended focal depths [31, 32].

Data availability statement

The data that support the findings of this study are available upon reasonable request from the authors.

Acknowledgment

The authors would like to thank Guy Han, Gennady Smartsev for mechanical design, Dekel Raanan, Omer Kneller, Mark Baevsky and Louis Daniault for fruitful discussions.

Funding

This work was supported by The Schwartz/Reisman Center for Intense Laser Physics, by a research grant from the Benozio Endowment Fund for the Advancement of Science, by the Israel Science Foundation, Minerva, Wolfson Foundation, the Schilling Foundation, R Lapon, Dita and Yehuda Bronicki, and by the Helmholtz association.

Conflict of interest

The authors declare no conflicts of interest.

Appendix

Beamlets cross-correlation spectrum and deconvolution factor

In our experiment, the spectrum is a double peak rather than Gaussian (see figure A2(c)). Therefore, the beamlet cross-correlation width σ_{bc4} is not exactly the same as the intensity temporal width. We calculate the deconvolution factor which properly scales the beamlet cross-correlation width σ_{bc4} with the pulse temporal width. For this we cross-correlate the Wizzler measured field with itself (autocorrelation), raise the result to the fourth power and compare it with the field's intensity width (see figure A1). We get that for our spectrum, σ_{bc4} is smaller by a factor of 1.27 compared to the intensity width σ .

Delay mirror

The segmented delay mirror assembly is depicted in figure A3. The assembly is based on a common 4'' mount (Thorlabs KS4) which holds the main 4'' diameter 15 mm thick plane mirror. The mirror has a central hole with a diameter of 18 mm. The hole, with the help of an o-ring, serves as an attachment for the piezo stack. This assures that the axis of tilt is as close as possible to the surface of the large mirror figure A3(c). The homemade holder for the piezo actuator allowed for independent control of the central segment mirror with respect to the large mirror. For the central mirror, we used a 1/2'' diameter mirror (Thorlabs PF05-03-P01). We used a piezo stack (PI-P-840) which has nanometric precision over a 90 μm range. The piezo stack has a position sensor and is operated in a closed-loop. The compact size of the assembly allows for easy and non-intrusive installation in nearly any experimental setup.

For the case of non-zero reflection from the central mirror, the path difference depends on the angle. Consider a ray which is impinging on the mirror at an angle α and the mirror is shifted by a distance of d . The total delay difference d_{tot} as can be seen in figure A4 is composed of $p_1 + p_2$

$$d_{\text{tot}} = \frac{d}{\cos(\alpha)} (1 + \sin(90 - 2\alpha)). \quad (\text{A1})$$

Beamlet selector

The beamlet selector is presented in figure A5 and consists of two main parts: aperture disks and a holder. The disks have a 100 mm diameter and are laser cut from 3 mm Delrin plates (figure A5). Both disks were sanded to roughen the surface to achieve diffusive reflection of the blocked laser beam. One disk has radially distributed holes of 2.65 mm diameter (right hand side on figure A5(a)); the holes were beveled to increase angular acceptance. The second disk consists of spirally oriented holes with a diameter of 5 mm (left hand side on figure A5(a)). When the disks are superimposed, the central hole stays open (reference beamlet), and the relative orientation of the disks allows radial selection of the second opened hole (test beamlet). The orientation of both disks together sets the angle of the test beamlet. The disk holder is 3D printed

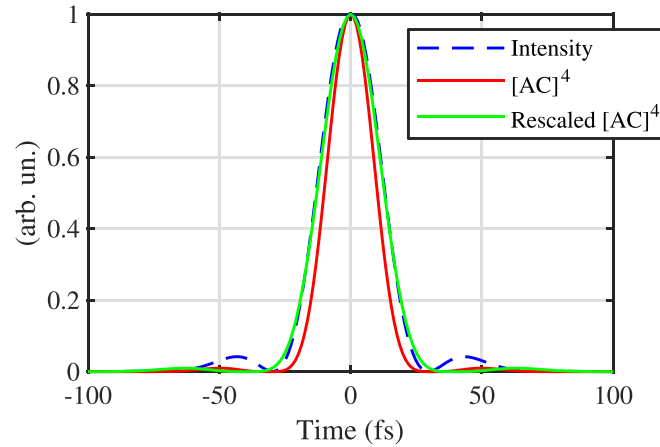


Figure A1. Field auto-correlation raised to the fourth power compared to intensity: (dashed blue) Wizzler measured intensity, (red) auto-correlation raised to the power of four of the field derived from Wizzler measured intensity, (green solid) re-scaled autocorrelation raised to the power of four which matches the measured intensity.

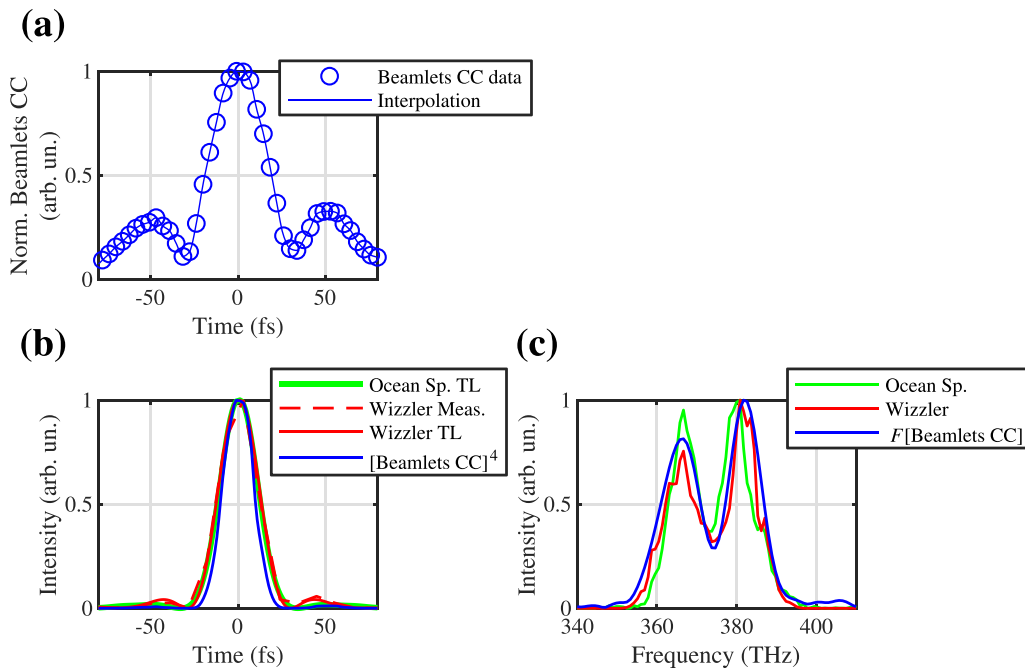


Figure A2. Temporal and spectral intensities. (a) Normalized beamlet cross-correlation envelope data (circles) and interpolating curve (solid). (b) Beamlet cross-correlation envelope raised to the fourth power (solid blue) plotted with Wizzler measured (dashed red) and transform-limited (TL) (solid red) temporal intensities, and fiber-coupled spectrometer (Ocean Optics) TL pulse (solid green). (c) Spectral intensity from Fourier transform of beamlet cross-correlation (solid blue), with Wizzler (solid red) and fiber-coupled spectrometer (solid green) spectra.

using Polylactic Acid (PLA) and holds the two disks securely (figure A5(b)). The holder has a special bump (marked in red) that snaps to the notches made at the edges of the disks (figure A5(d)). This allows for precise selection of test beamlet for a discrete set of radii and angles, as shown in figure A5(b).

Laser chain STC simulation

We simulated the STCs of the laser chain at WIS and the correction of PFT by a special doublet using the Zemax OpticStudio ray-tracing software. We considered only three refractive telescopes, even though the WIS laser consists of

more beam expansion stages. This choice was motivated by the fact that the PFC induced by the beam expander (assuming the same material for both lenses) depends on the beam size and focusing properties of the lenses [38]. Since all our telescopes have similar focusing properties, the PFC is proportional to the beam size. Therefore, the earlier stages, in which the beam radius is small, play a negligible effect in the STC and are thus ignored. In the last beam expander, the beam size is largest and, therefore, most of the STC is accumulated there. The system is shown in figure A6. The simulation begins with a broad spectrum beam with perfect spatial phase and no STC which is gradually expanded by

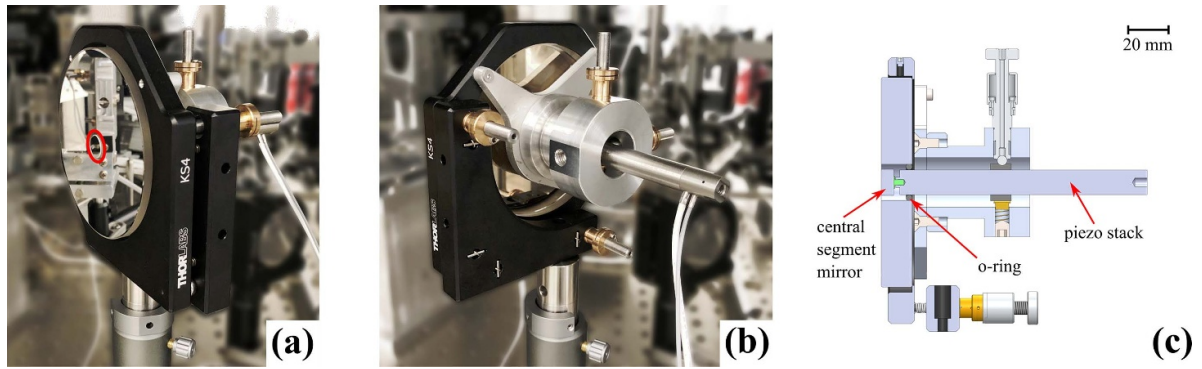


Figure A3. Segmented delay mirror assembly. (a) Front view: the central segment (marked in red) position is controlled with the piezo stack. (b) Rear view: the mirror has independent angle control for the central segment and both mirrors together. (c) The assembly cross-section is shown, with a marked central segment mirror, piezo stack, and o-ring which holds it inside the primary mirror.

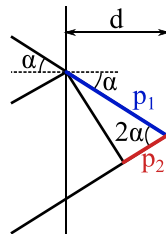


Figure A4. The geometrical scheme used in the calculation of delay imposed on the optical path for the non-zero reflected ray.

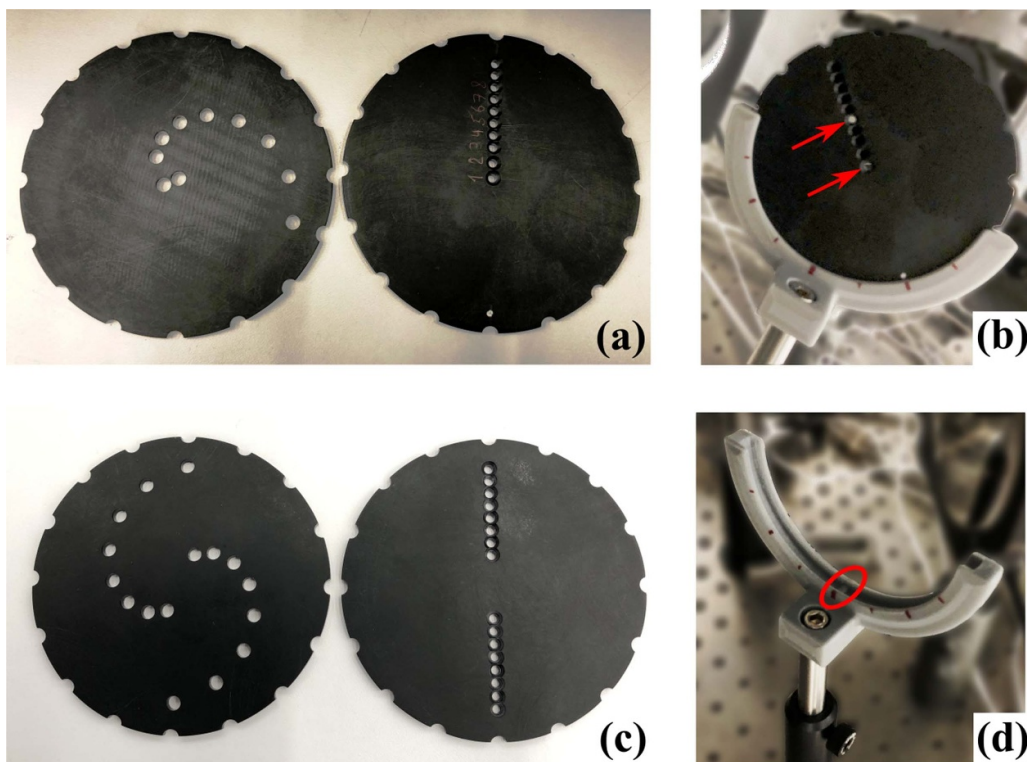


Figure A5. Beamlets selector and ‘PFT tool’ masks. (a) Beamlet selector mask selects on-axis and off-axis beamlets. (b) A pair of beamlets selected for a specific angle and radius. (c) ‘PFT tool’ mask which selects two off-axis beamlets. (d) 3D printed plastic mount holds the pair of disks. The special bump (marked in red) snaps the disks to chosen position.

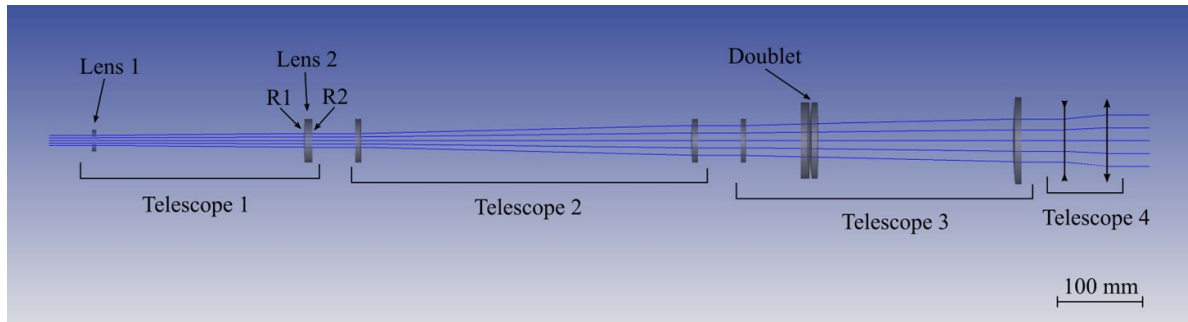


Figure A6. Optical system used for the laser chain STC simulation. The system consists of four telescopes (beam expanders) and a corrective doublet which is located inside of telescope 3. The numbering of the telescopes, lenses and their radii are from left to right. Telescopes 1–3 are refractive and telescope 4 is an ideal telescope which has no dispersion.

Table A1. Technical details of the refractive telescopes.

		Telescope 1	Telescope 2	Telescope 3
(Distance units are mm)				
Lens 1 (F. silica)	Magnification	1.37	2.20	1.43
	R1	0	0	5
	R2	305	150	330
	Thickness	5	5	5
Lens 1–2 separation		250	395	320
Lens 2 (F. silica)	R1	420.2	325.5	472.4
	R2	0	0	0
	Thickness	10	8	10

Table A2. Technical details of the correction doublet.

(Distance units are mm)	Lens 1	Lens 2
Glass (CDGM)	H-ZF1	H-K9L
R1	0	306
R2	306	−1331
Thickness	7	11
Lens 1–2 separation	2.55	

refractive Galilean telescopes—labeled telescope 1–3—and accumulates STC with minor spatial aberrations. STC correction is applied via a specially designed doublet, inserted inside telescope 3. Precise element-wise details about the telescopes are depicted in table A1, and the corrective doublet is described in table A2. In the real system, the beam propagates around 21 m before reaching the focusing parabola. Since the beam diverges slightly, this results in an increase of its size by a factor of 1.2. We have verified by ray-tracing that the flat glass window and compressor (assumed aligned) introduce negligible STC to the beam; therefore, we did not consider them here. Also, we did not consider amplification crystals between the telescopes. We simulated the divergence in free space as ‘Telescope 4’—a perfect dispersionless beam expander. The induced PFC will be overestimated compared to the measured one if the dispersionless beam size growth is not included in the simulation.

We modified the macro [39] for Zemax OpticStudio to calculate pulse group delay, group velocity dispersion, and third-order spectral phase across the beam. For each position in the beam, the macro traces rays in the vicinity of the central wavelength (800 nm in our case) and calculates the optical path. Then, using derivatives, it approximates relevant dispersion parameters. We consider only a radially symmetric case since we assume perfect alignment and optics. The results of the simulation are depicted in figure A7. The group delay along the beam is shown in figure A7(a). As can be seen, without the corrective doublet, the simulated beam has PFC (the central part of the beam is delayed more). When the corrective doublet is present, the curvature is suppressed. By fitting to a parabola we get the value of the PFC: $PFC = -0.0243 \text{ (fs mm}^{-2}\text{)}$ and $PFC = 0.0011 \text{ (fs mm}^{-2}\text{)}$ for the uncorrected and the corrected cases respectively. The doublet position inside of telescope 3 mimicked the position it had in the experiment described in this paper. The doublet introduces a small focusing term which is corrected by adjusting the position of the focal plane of the final focusing parabola (several mm with 2 m focal length parabola). The doublet introduces negligible aberrations at all positions inside the telescope; thus, the beam remains almost diffraction-limited.

In the same figure, we show the accumulated phase difference, as a function of radius, of a 800 nm monochromatic wave propagating through this optical setup. We can see that the phase difference is close to zero. Assuming an 800 nm wave propagating in vacuum, the value of the phase and the delay differ only by a numerical factor and thus, the figure shows both the phase and the delay as a function of radius. The quadratic focusing term from the prior optics in the simulation is eliminated by adjusting the last lens of telescope 4. In the real system, the curved spatial front of the diverging beam is compensated by focal distance adjustment of the focusing mirror. In figure A7(b) higher orders of dispersion as a function of radius are presented. As seen in both the uncorrected and corrected cases, the simulated beam gets some relative group delay dispersion (GDD) and third order dispersion (TOD) which broadens the pulse but is negligible in our case. This stems from the fact that the beam is gradually expanded through the telescopes, which have the same dispersion (same glass) but radially differing thickness of glass and angle of

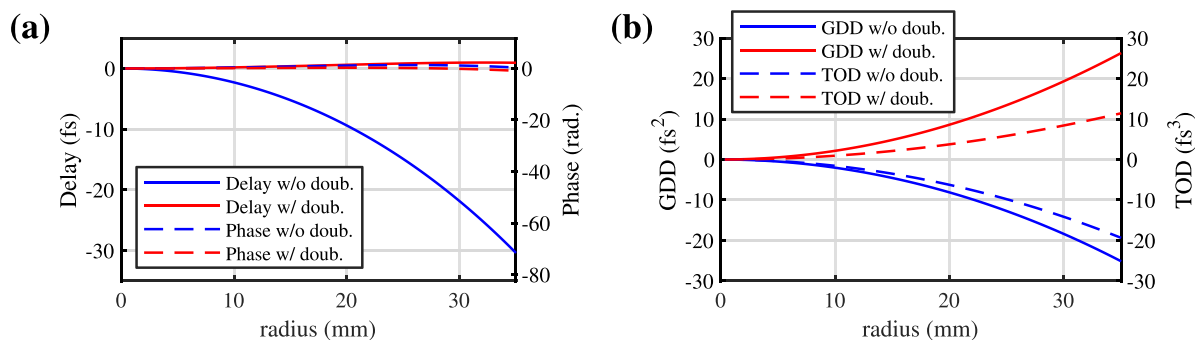


Figure A7. Simulated relative values of dispersion along the beam. (a) Group delay (solid) and phase (dashed) for 800 nm with (blue) and without (red) corrective doublet. (b) GDD (solid) and TOD (dashed) with (blue) and without (red) corrective doublet.

Table A3. Global dispersion values at $r = 0$ mm.

	Group delay (ps)	GDD (fs ²)	TOD (fs ³)
No doublet	4357	1545	1156
With doublet	4392	2923	2069

incidence. This causes the central part of the beam to propagate through more glass and accumulate more group delay and more relative GDD and TOD than the outer parts of the beam. In the corrected case, special glasses and curvatures are used in the doublet to cancel the PFC; however, the relative GDD and TOD are slightly over-corrected. The relative dispersion values, related to $r = 0$ mm, are presented in table A3 along with the global dispersion values at $r = 0$ mm.

ORCID iDs

Slava Smartsev  <https://orcid.org/0000-0002-6445-6184>

Eitan Y Levine  <https://orcid.org/0000-0003-0261-8798>

Victor Malka  <https://orcid.org/0000-0002-0488-2587>

References

- [1] Strickland D and Mourou G 1985 Compression of amplified chirped optical pulses *Opt. Commun.* **56** 219–21
- [2] Danson C N et al 2019 Petawatt and exawatt class lasers worldwide *High Power Laser Sci. Eng.* **7** e54
- [3] Mourou G, Tajima T and Bulanov S V 2006 Optics in the relativistic regime *Rev. Mod. Phys.* **78** 309
- [4] Bor Z 1989 Distortion of femtosecond laser pulses in lenses *Opt. Lett.* **14** 119–21
- [5] Bor Z, Gogolak Z and Szabo G 1989 Femtosecond-resolution pulse-front distortion measurement by time-of-flight interferometry *Opt. Lett.* **14** 862–4
- [6] Jolly S W, Gobert O and Quéré F 2020 Spatio-temporal characterization of ultrashort laser beams: a tutorial *J. Opt.* **22** 103501
- [7] Jeandet A et al 2021 A survey of spatio-temporal couplings throughout high-power ultrashort lasers *Opt. Express* **30** 3262–88
- [8] Bourassin-Bouchet C, Stephens M, de Rossi S, Delmotte F and Chavel P 2011 Duration of ultrashort pulses in the presence of spatio-temporal coupling *Opt. Express* **19** 17357–71
- [9] Li Z, Tsubakimoto K, Yoshida H, Nakata Y and Miyanaga N 2017 Degradation of femtosecond petawatt laser beams: spatio-temporal/spectral coupling induced by wavefront errors of compression gratings *Appl. Phys. Express* **10** 102702
- [10] Li Z and Miyanaga N 2018 Simulating ultra-intense femtosecond lasers in the 3-dimensional space-time domain *Opt. Express* **26** 8453–69
- [11] Sainte-Marie A, Gobert O and Quéré F 2017 Controlling the velocity of ultrashort light pulses in vacuum through spatio-temporal couplings *Optica* **4** 1298–304
- [12] Froula D H et al 2018 Spatiotemporal control of laser intensity *Nat. Photon.* **12** 262–5
- [13] Turnbull D, Bucht S, Davies A, Haberberger D, Kessler T, Shaw J L and Froula D H 2018 Raman amplification with a flying focus *Phys. Rev. Lett.* **120** 024801
- [14] Turnbull D, Franke P, Katz J, Palastro J P, Begishev I A, Boni R, Bromage J, Milder A L, Shaw J L and Froula D H 2018 Ionization waves of arbitrary velocity *Phys. Rev. Lett.* **120** 225001
- [15] Debus A, Pausch R, Huebl A, Steiniger K, Widera R, Cowan T E, Schramm U and Bussmann M 2019 Circumventing the dephasing and depletion limits of laser-wakefield acceleration *Phys. Rev. X* **9** 031044
- [16] Caizergues C, Smartsev S, Malka V and Thauray C 2020 Phase-locked laser-wakefield electron acceleration *Nat. Photon.* **14** 475–9
- [17] Palastro J P, Shaw J L, Franke P, Ramsey D, Simpson T T and Froula D H 2020 Dephasingless laser wakefield acceleration *Phys. Rev. Lett.* **124** 134802
- [18] Walmsley I A and Dorrer C 2009 Characterization of ultrashort electromagnetic pulses *Adv. Opt. Photon.* **1** 308–437
- [19] Monmayrant A, Weber Sebastien and Chatel Beatrice 2010 A newcomer's guide to ultrashort pulse shaping and characterization *J. Phys. B.: At. Mol. Opt. Phys.* **43** 103001
- [20] Cai Y, Chen Z, Zeng X, Shanguan H, Lu X, Song Q, Ai Y, Xu S and Li J 2020 The development of the temporal measurements for ultrashort laser pulses *Appl. Sci.* **10** 21
- [21] Akturk S, Gu X, Bowlan P and Trebino R 2010 Spatio-temporal couplings in ultrashort laser pulses *J. Opt.* **12** 093001
- [22] Dorrer C 2019 Spatiotemporal metrology of broadband optical pulses *IEEE J. Sel. Top. Quantum Electron.* **25** 1–16
- [23] Jean-Baptiste M, Zhao C, Rodrigo L-M and Thomas O 2020 Single-shot diagnosing of spatiotemporal couplings in ultrashort laser pulses by spatio-spectral imaging of a third-order nonlinear process *Opt. Lett.* **45** 2207–10
- [24] Kim Y G, Kim J I, Yoon J W, Sung J H, Lee S K and Nam C H 2021 Single-shot spatiotemporal characterization of a

- multi-PW laser using a multispectral wavefront sensing method *Opt. Express* **29** 19506–14
- [25] Grace E et al 2021 Single-shot complete spatiotemporal measurement of terawatt laser pulses *J. Opt.* **23** 075505
- [26] Kroupp E et al 2022 Commissioning and first results from the new 2×100 TW laser at the WIS *Matter Radiat. Extremes* **7** 044401
- [27] Miranda M, Kotur M, Rudawski P, Guo C, Harth A, L'Huillier A and Arnold C L 2014 Spatiotemporal characterization of ultrashort laser pulses using spatially resolved Fourier transform spectrometry *Opt. Lett.* **39** 5142–5
- [28] Pariente G, Gallet V, Borot A, Gobert O and Quéré F 2016 Space–time characterization of ultra-intense femtosecond laser beams *Nat. Photon.* **10** 547–53
- [29] Netz R and Feurer T 2000 Diffraction of ultrashort laser pulses and applications for measuring pulse front distortion and pulse width *Appl. Phys. B* **70** 813–19
- [30] Li Z, Ogino J, Tokita S and Kawanaka J 2019 Arbitrarily distorted 2-dimensional pulse-front measurement and reliability analysis *Opt. Express* **27** 13292–306
- [31] Smartsev S, Caizergues C, Oubrierie K, Gautier J, Goddet J-P, Tafzi A, Phuoc K T, Malka V and Thaury C 2019 Axiparabola: a long-focal-depth, high-resolution mirror for broadband high-intensity lasers *Opt. Lett.* **44** 3414–17
- [32] Oubrierie K, Andriyash I A, Lahaye R, Smartsev S, Malka V and Thaury C 2021 Axiparabola: a new tool for high-intensity optics *J. Opt.* **24** 045503
- [33] Jolly S W, Gobert O, Jeandet A and Quéré F 2020 Controlling the velocity of a femtosecond laser pulse using refractive lenses *Opt. Express* **28** 4888–97
- [34] Jolly S W, Gobert O and Quéré F 2021 Spatio-spectral characterization of ultrashort laser pulses with a birefringent delay line *OSA Contin.* **4** 2044–51
- [35] Kabacinski A, Oubrierie K, Goddet J-P, Gautier J, Tissandier F, Kononenko O, Tafzi A, Leblanc A, Sebban S and Thaury C 2021 Measurement and control of main spatio-temporal couplings in a CPA laser chain *J. Opt.* **23** 06LT01
- [36] Goodman J W 2005 *Introduction to Fourier Optics* (Englewood, CO: Roberts)
- [37] Diels J-C, Rudolph W, Liao P F and Kelley P 2006 *Ultrashort Laser Pulse Phenomena: Fundamentals, Techniques and Applications on a Femtosecond Time Scale* (San Diego, CA: Elsevier Science & Technology)
- [38] Bor Z 1988 Distortion of femtosecond laser pulses in lenses and lens systems *J. Mod. Opt.* **35** 1907–18
- [39] O'Shea D C 2006 Group velocity dispersion using commercial optical design programs *Appl. Opt.* **45** 4740–6