



**HAL**  
open science

## **PhD POMMIER : Perception and multimodal objectivation of an intervention in restoration-conservation**

Emma Gillet, Sandie Le Conte, Christine Andraud, Stephane Serfaty, Andrés Arciniegas, Claudia Fritz, Dominique Martos-Levif, Matthieu Gilles, Fanny Bauchau, Nicolas Bouillon, et al.

### ► To cite this version:

Emma Gillet, Sandie Le Conte, Christine Andraud, Stephane Serfaty, Andrés Arciniegas, et al.. PhD POMMIER : Perception and multimodal objectivation of an intervention in restoration-conservation. inArt 2022: 5th International Conference on Innovation in Art Research and Technology, Jun 2022, Paris, France. . hal-03793280

**HAL Id: hal-03793280**

**<https://hal.science/hal-03793280>**

Submitted on 30 Sep 2022

**HAL** is a multi-disciplinary open access archive for the deposit and dissemination of scientific research documents, whether they are published or not. The documents may come from teaching and research institutions in France or abroad, or from public or private research centers.

L'archive ouverte pluridisciplinaire **HAL**, est destinée au dépôt et à la diffusion de documents scientifiques de niveau recherche, publiés ou non, émanant des établissements d'enseignement et de recherche français ou étrangers, des laboratoires publics ou privés.



Distributed under a Creative Commons Attribution 4.0 International License

# Perception and multimodal objectivation of an intervention in conservation-restauration

Gillet Emma<sup>1,2,3</sup>, Le Conte Sandie<sup>1</sup>, Andraud Christine<sup>2</sup>, Serfaty Stéphane<sup>3</sup>, Arciniegas-Mosquera Andres<sup>3</sup>, Fritz Claudia<sup>4</sup>, Martos-Leviv Dominique<sup>5</sup>, Gilles Matthieu<sup>5</sup>, Bauchau Fanny<sup>6</sup>, Bouillon Nicolas<sup>6</sup>, Guillon Odile<sup>6</sup>, Sindaco Claudia<sup>1</sup>

1 Institut national du patrimoine, INP, Département des Restaurateurs, Aubervilliers, France

2 Centre de Recherche sur la Conservation (CRC), Muséum national d'Histoire naturelle, CNRS, Ministère de la Culture, 36 rue Geoffroy Saint Hilaire, 75005 Paris, France

3 SATIE UMR CNRS 8029, CY Cergy Paris University, Cergy-Pontoise, France

4 Équipe LAM - Lutheries-Acoustique-Musique, Institut Jean le Rond d'Alembert UMR 7190, Université Pierre et Marie Curie - CNRS, Paris, France

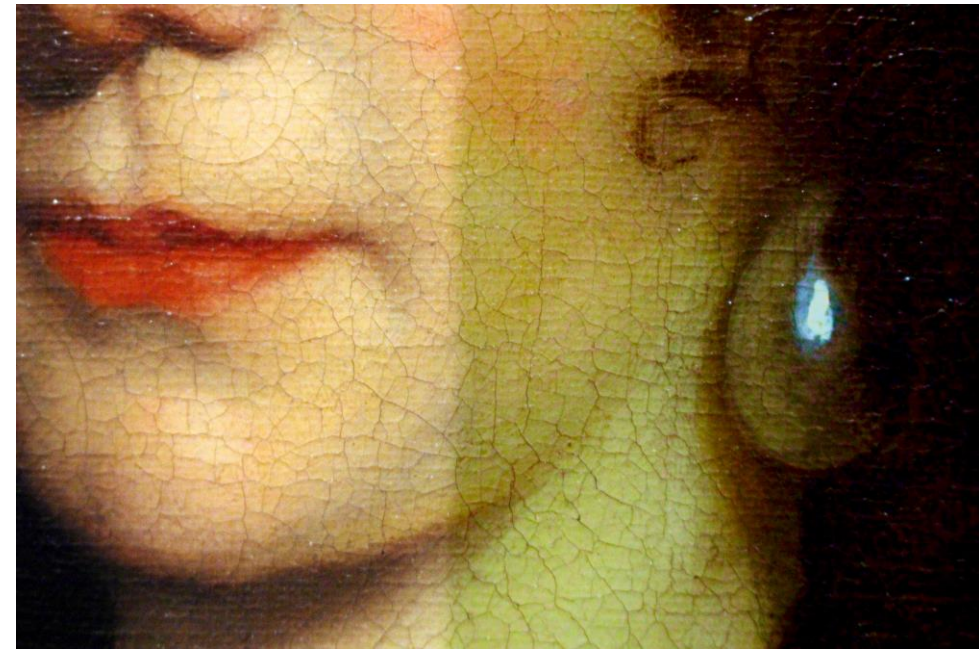
5 Centre de recherche et de restauration des musées de France, C2RMF, département restauration, Paris, France

6 CICRP, Centre Interdisciplinaire de Conservation et de Restauration du Patrimoine, Marseille, France

emma.gillet@mnhn.fr

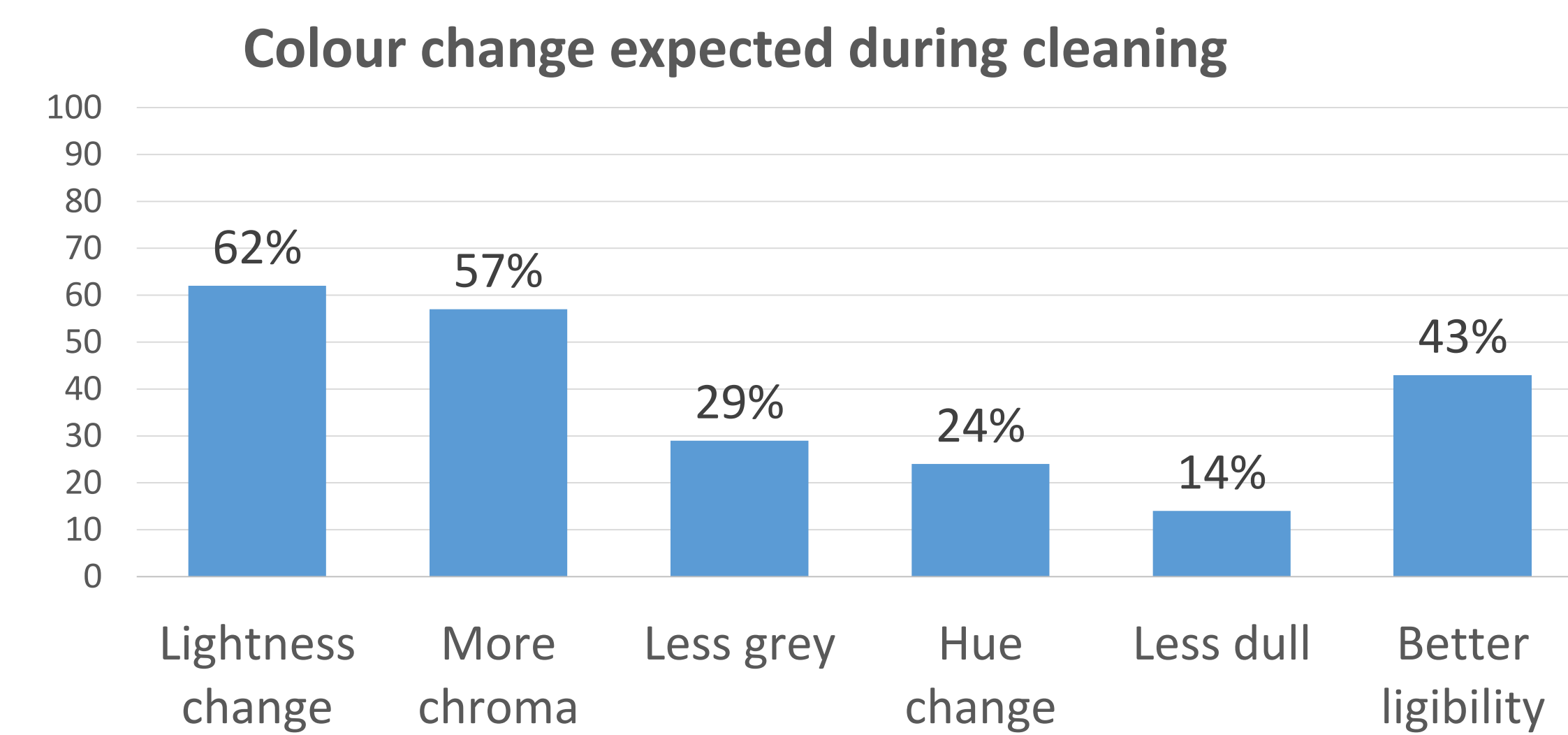
## State of the art

**Visual perception** is an essential notion when it comes to the evaluation of the **conservation-restoration** process : the eye is the expert's tool of diagnostic and validation, as well as the observer's path to appreciate the work. Cleaning and varnish removal highly impact the appearance of paintings. Thus, efficacy and innocuity of cleaning are commonly evaluated by visual observations [1][2]. Several studies have already focussed on the evaluation of modifications occurring due to restoration, as the cognitive impact of a varnish removal [3]. Nevertheless, as far as we know, no studies have focussed on sensitive perception thresholds and have taken the restoration process into account. Thus, questions are raised about the relevance of an objective measurement in the evaluation process of paintings undergoing restoration.



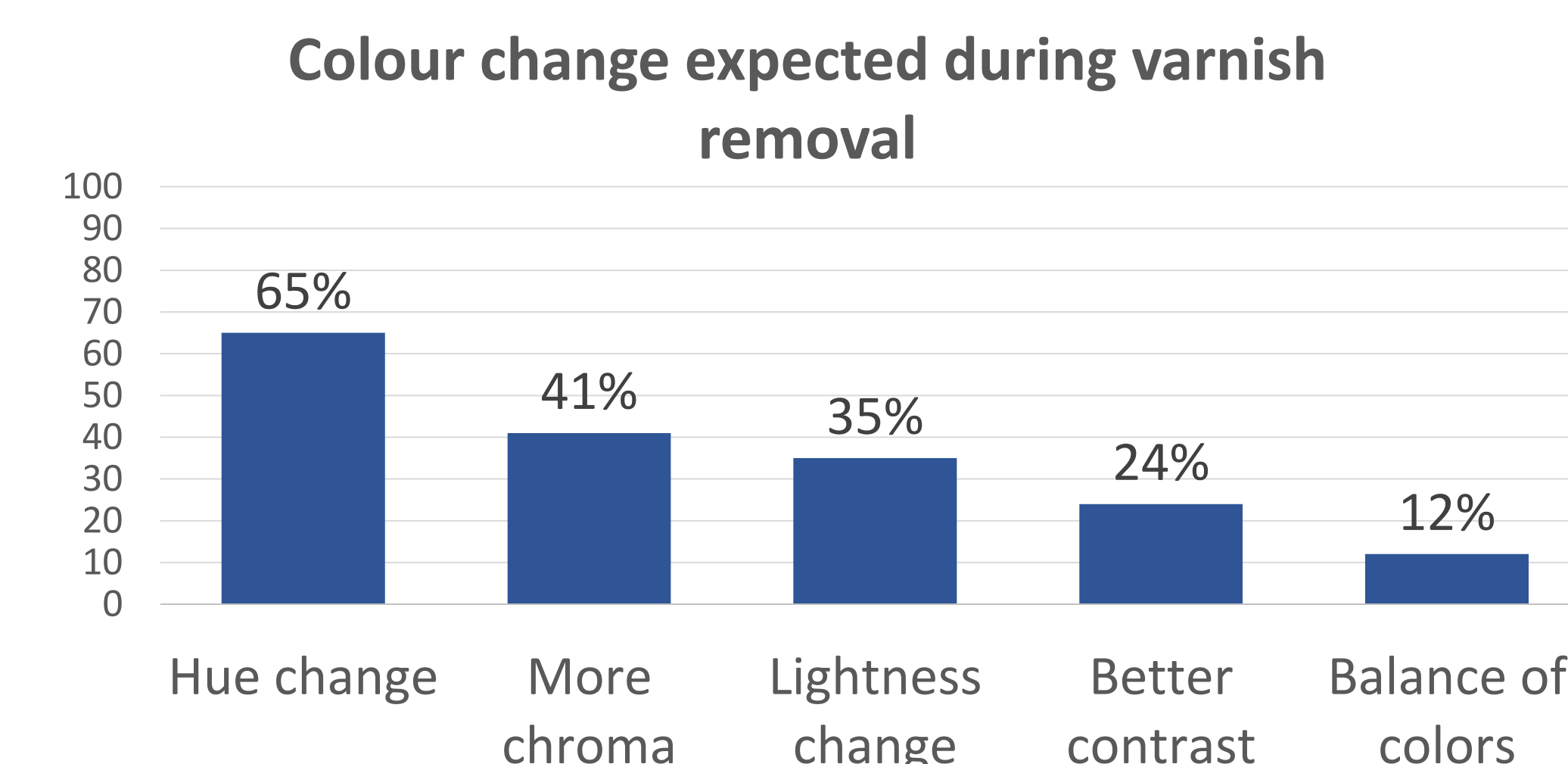
## Prospect

In the questionnaire, questions are asked about colour and gloss changes occurring during cleaning and varnish removal. These answers give information about our further measurements.



- 62% of restorers mention a change in lightness : in general an increase but some of them mention a decrease of lightness for dark colours.
- 14% answered that colours are less dull, which also concern gloss.

- For gloss, half of them answered that it depends on the pictorial layer and its state of preservation.
- 33% are categorical and expect "more gloss".



- 65% of respondents talk about a change of hue, mostly due to "unyellowing" when they remove an oxidized varnish
- 35% of restorers mention a change in lightness : as cleaning, most of them expect an increase of lightness, but some specify that dark colours become darker

- For gloss, 64% of respondents expect less gloss but also 21% expect residual gloss.

The measurements of colour, gloss and surface state will allow us to confirm the assessment of respondents by quantifying these changes and to discriminate the end of cleaning and varnish removal.

## Objective

The aim of this project is to link perceptive measurements from sensorial analysis and optical methods during a specific restoration intervention : **cleaning**.

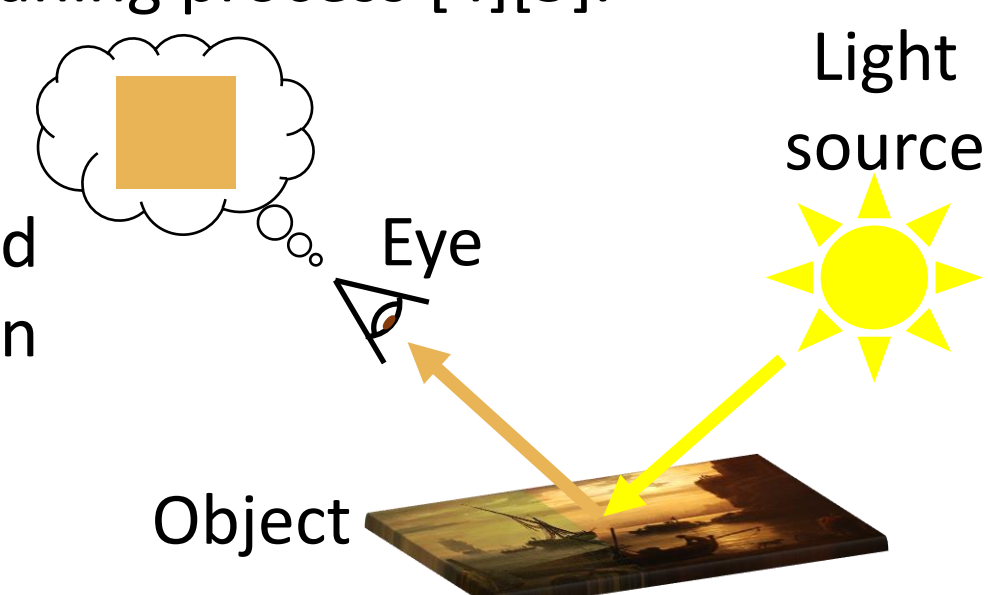
- Select relevant visual appearance attributes : colour and gloss
- Conduct perceptive experiments so as to identify thresholds in appearance modifications
- Select and conduct related optical measurements
- Correlate perceptual data to objective optical measurements
- Design an easy-to-use instrument for measuring colour and gloss without contact

## Appearance attributes

CIE define 5 visual appearance attributes : colour, gloss, translucency, texture and shape. This study will focus on colour and gloss which seem to be the most important parameters in the cleaning process [4][5].

### Colour

Colour is a **physiological sensation** associated to the interaction between a light source, an object and the observer's eye.



### Gloss

Gloss is a **visual sensation** related to the geometrical distribution of a luminous flux reflected by a surface, especially in the specular direction.



## Questionnaire

A questionnaire about cleaning and (partial) varnish removal of paintings was sent to French restorers to learn more about their preferences and to implement a relevant experiment. 21 restorers answered. Questions were asked about the end of cleaning and varnish removal, change of colour and gloss, lighting, technique and materials of observation or methods of cleaning. All these information able us to develop an experiment to discriminate the end of cleaning and varnish removal.

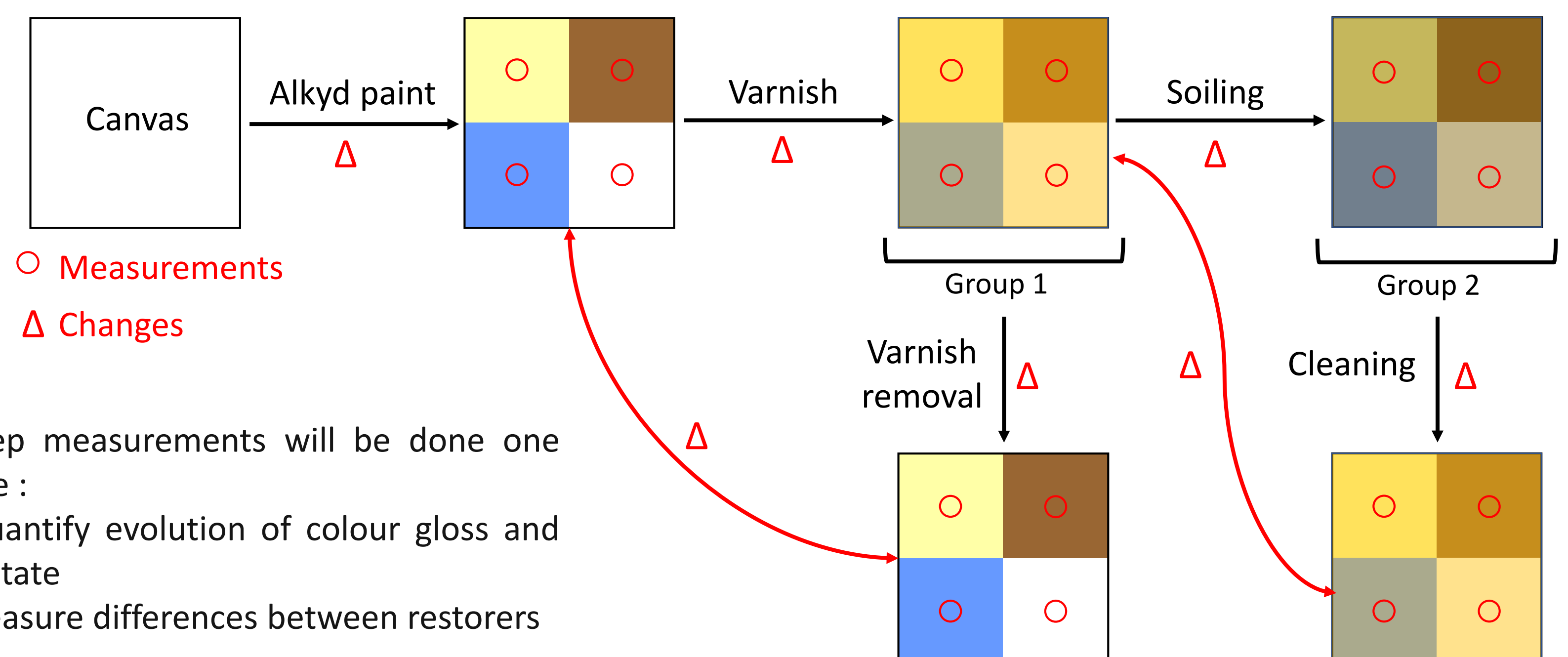
## References

- [1] Daudin-Schotte, Maude, Madeleine Bisschoff, et Ineke Joosten. « Dry Cleaning Approaches for Unvarnished Paint Surfaces », août 2012, 11.
- [2] Ormsby, B., J. Lee, I. Bonaduce, et A. Lluveras-Tenorio. « Evaluating Cleaning Systems for Use on Water Sensitive Modern Oil Paints: A Comparative Study ». In Conservation of Modern Oil Paintings. [https://doi.org/10.1007/978-3-030-19254-9\\_2](https://doi.org/10.1007/978-3-030-19254-9_2).
- [3] Nicosia, Grazia. « Le vernis des apparences ». CeROArt. Conservation, exposition, Restauration d'Objets d'Art, no 5 (15 avril 2010). <https://doi.org/10.4000/ceroart.1483>.
- [4] Eugène, Christian. « MEASUREMENT OF "TOTAL VISUAL APPEARANCE": A CIE CHALLENGE OF SOFT METROLOGY », s. d., 6.
- [5] Elias, Mady, et Jacques Lafait. La couleur: lumière, vision et matériaux. Échelles. Paris: Belin, 2006.

## Experiment

The volunteers for experiment will be separated in 2 groups and will be asked to restore a sample :

- Group 1 : "A museum asks you to restore a painting. You only have to remove the varnish (it is already cleaned). It will be varnished when it gets back to the museum."
- Group 2 : "A museum asks you to restore a painting. The curator wants to keep the varnish so you only have to clean it."



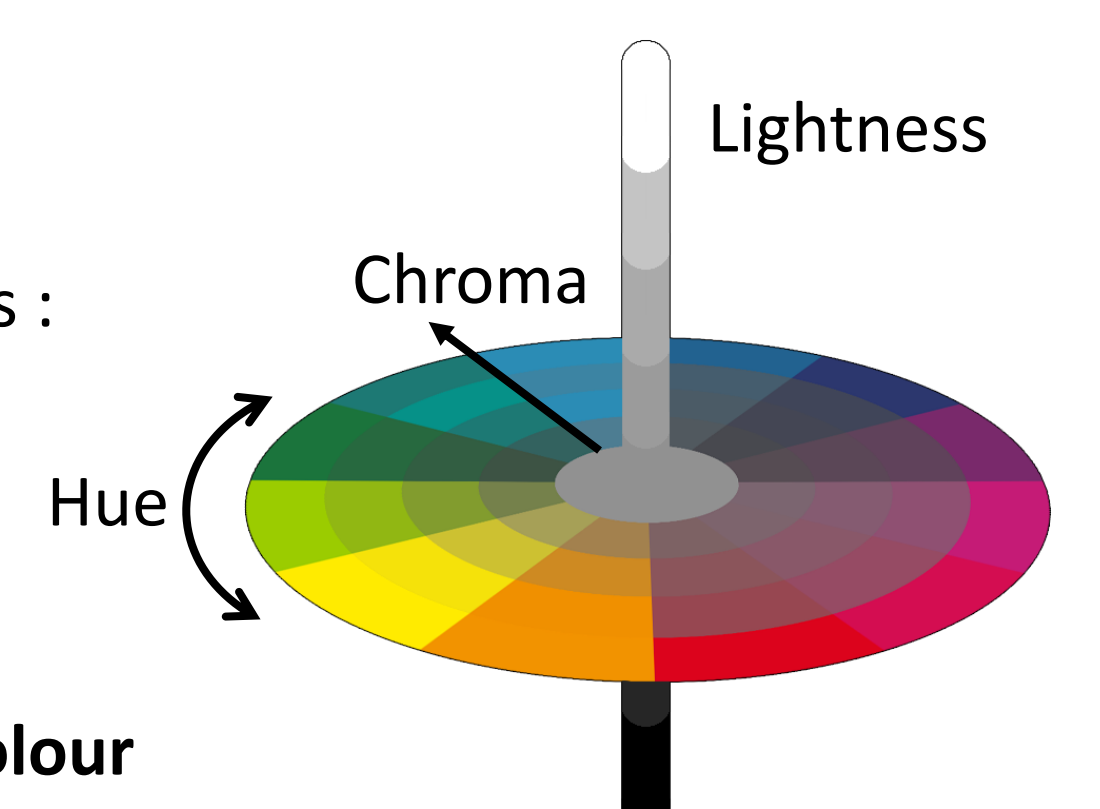
## Methods

### Colour

Colour will be measured with different instruments in order to compare accuracies :

- Spectrophotometer
- Spectrocolorimeter
- Multispectral imaging (9 channels)
- Photography (3 channels : RGB)

Finally, colorimetry will be used to describe and visualise colours. The **Munsell colour space** describes colours in term of hue, chroma and lightness. This terms are commonly used by restorers to characterize colours.



### Gloss

Gloss will be measured with a glossmeter.

Also the gloss of an object is highly depending on its surface roughness. In order to complete our measurements of gloss, surface roughness will be measured with a 3D microscope.

