



**HAL**  
open science

## Coconut fields classification using data mining on a large database of high-resolution Ikonos images

Elise Desmier, Frederic Flouvat, Benoit Stoll, Nazha Selmaoui-Folcher

### ► To cite this version:

Elise Desmier, Frederic Flouvat, Benoit Stoll, Nazha Selmaoui-Folcher. Coconut fields classification using data mining on a large database of high-resolution Ikonos images. Sixth International Conference on Digital Information Management, Sep 2011, Melbourne, Australia. 10.1109/ICDIM.2011.6093370 . hal-03791070

**HAL Id: hal-03791070**

**<https://hal.science/hal-03791070v1>**

Submitted on 13 Jun 2023

**HAL** is a multi-disciplinary open access archive for the deposit and dissemination of scientific research documents, whether they are published or not. The documents may come from teaching and research institutions in France or abroad, or from public or private research centers.

L'archive ouverte pluridisciplinaire **HAL**, est destinée au dépôt et à la diffusion de documents scientifiques de niveau recherche, publiés ou non, émanant des établissements d'enseignement et de recherche français ou étrangers, des laboratoires publics ou privés.

# Coconut fields classification using data mining on a large database of high-resolution Ikonos images

Elise Desmier\*, Frédéric Flouvat†, Benoit Stoll‡ and Nazha Selmaoui-Folcher†

\*INSA-Lyon, LIRIS Combining, UMR5205, F-69621, France

Email: elise.desmier@gmail.com

†University of New Caledonia, PPME, BP R4, F-98851Nouméa, New Caledonia

Email: {frederic.flouvat, nazha.selmaoui}@univ-nc.nc

‡University of French Polynesia, GePaSUD, BP6570, 98702, Tahiti, French Polynesia

Email : benoit.stoll@upf.pf

**Abstract**—Supervised classification of satellite images is a commonly used technique in Remote Sensing. It allows the production of thematic maps based on a training set chosen by domain experts. These training sets, called ROI (Regions Of Interest), statistically characterize each class (e.g. coconut, sand) of the satellite image. Thus, a set of ROI is manually created by domain expert for each image. When a large number of images with high resolution occurs, manual creation of ROI for each image can be very time and money consuming. In this paper, we propose a semi-automatic approach based on clustering to limit the number of ROI done by experts. Then, we use decision trees on a binary decomposition of RGB components to improve the classification. Experiments have been done on 306 high resolution images of Tuamotu archipelago.

## I. INTRODUCTION

Supervised classification of satellite images is a commonly used technique in Remote Sensing. It allows the production of thematic maps based on a training set chosen by domain experts. These training sets, called ROI (Regions Of Interest), statistically characterize each class (e.g. coconut, sand) of the satellite image. Thus, a set of ROI is manually created by domain expert for each image. When a large number of images with high resolution occurs, manual creation of ROI for each image can be very time and money consuming. Other techniques must be applied to limit these pre-processings.

Our goal is to detect and estimate coconut fields in Tuamotu. Tuamotu archipelago contains 78 coralian atolls located between 134 to 150 degree West and 14 to 24 degree South, covering 800 000 km<sup>2</sup> area. Knowing the dimensions of the Tuamotu, coconut fields is of a great local economic importance for coprah and coconut oil production. The isolation of those atolls and their dimensions make impossible a mission to obtain a complete inventory of all coconut fields. Thus, we plan to combine high resolution satellite images and supervised classification to deal with this problem. Our database consists in 306 high-resolution Ikonos satellite images (0.80 m) covering 59 atolls (over 150 GB of data). These images were taken at different times, and acquired with different weather and illumination conditions. They are composed of three RGB channels (Infra Red is unfortunately lacking). Supervised classification is based on at least 10 classes such as vegetation, water (sea) and coral. However,

extracting several ROI per image and per class is a tedious work considering the size of the database.

In this paper, we propose a semi-automatic approach based on data mining to detect coconut fields over these 306 high resolution images. This approach limits the number of ROI to be done by experts for the classification. The proposed method is composed of the following steps:

- Creation of a set of ROIs per group of "similar" images. These groups are constructed using a clustering method on metadata (e.g. sun position, time, ...) and histograms.
- Supervised classification based on a decision tree method where attribute-values of pixels are the binary decomposition of RGB components.

We validate our approach by comparing our results, for three atoll images, to the results of [11] which uses image analysis on few Tuamotu atolls.

Section 2 presents some related works on tree segmentation method in satellite images. Section 3 gives the process of classification on large database of high resolution images. Section 4 shows some experimental results on coconut classification on a large database. Finally, section 5 concludes and gives some perspectives.

## II. RELATED WORKS

Several approaches exist for segmenting trees in satellite images. In [4] authors propose a method of finding local maxima of the Laplacian to detect the olive trees. Other methods [5] try to extract trees in image that match synthetic pattern model. In [1], the authors use an heuristic method based on valleys detection (by applying masks in four direction). They consider image as a mountainous relief where the tree edges are local minimum. Similarly, [2] construct a network of edge points (local minimum calculated in four directions of 7x7 neighborhood) that correspond to tree crowns. Others researchers [12], [13] use the classical watershed method to segment trees. Perrin et al. [7] propose to extract the tree crowns by modeling forest stands by a process marked by ellipses.

All of these methods process images containing only vegetation. There is no other types of objects in these images that disturb the segmentation. Our images are different. They

require a classification phase of coconut surfaces which is very difficult to achieve without using ROI. To our knowledge, there is no method allowing a semi-automatic classification of a high number of images.

A previous study was done by Raimana Teina in its thesis [10], this study is based on a part of the same Ikonos database that we use in this paper (mainly on the Tikehau atoll) but with a different goal. His work aims to detect coconut tree crown using watershed segmentation technics in order to estimate the number of coconuts in the whole Tuamotu archipelago. The segmentation results were compared to samples from a field campaign. This study showed that as not all coconut trees are visible on the Ikonos images, a detection rate has to be applied to quantify the number of coconuts really present on the ground, but this detection rate depends on the type of coconut field. Then, he introduced a coconut field typology and applied different classification algorithms in order to map precisely the different types of coconut fields as well as the other classes present on the images (sand, wet coral, dry coral, low vegetation, etc.). To achieve the separation of the different type of coconut fields, a set of classical texture indexes are used along with the RGB bands. The SVM (Support Vector Machine) classification method shows the best results among the other classical classification algorithms mainly because of the use of texture parameters along with RGB bands (which are not handled easily by classical classification algorithms such as Maximum Likelihood). The main drawback of the use of SVM algorithm is the very long computation times (several days for some images) which is not applicable to the entire Tuamotu Ikonos database. As our goal in this paper is to classify the whole Tuamotu Ikonos database using data mining algorithms, we use a simple class set (only one class for the coconut fields) and thus avoid the texture parameters computation which would inevitably increase the calculation time and add constraint on the classification algorithm. The Raimana Teina classification results on Fangatau, Nukutavake, Vahitahi, Vairaatea and Tikehau will be used as a comparison with our results to assess the quality of our method.

### III. CLASSIFICATION OF A LARGE DATABASE OF HIGH RESOLUTION IMAGES

We describe in this section our approach to classify a large database of high resolution images using data mining techniques (clustering and decision trees). Figure 1 illustrates this process.

#### A. Reducing the number of ROI creations

In a first step, we identified all different objects (regions) generally appearing in atoll images (see figure 2 and table I). In a classical classification approach, given an image, experts would have to create an ROI for each different region. Thus the number of ROI to construct by experts is  $nbImg \times nbObj$ , with  $nbImg$  the number of images to study and  $nbObj$  the number of objects to classify. To avoid such a huge number of ROI creations, the idea is to group "similar" images and to create only one set of ROI for this group. For example, if the

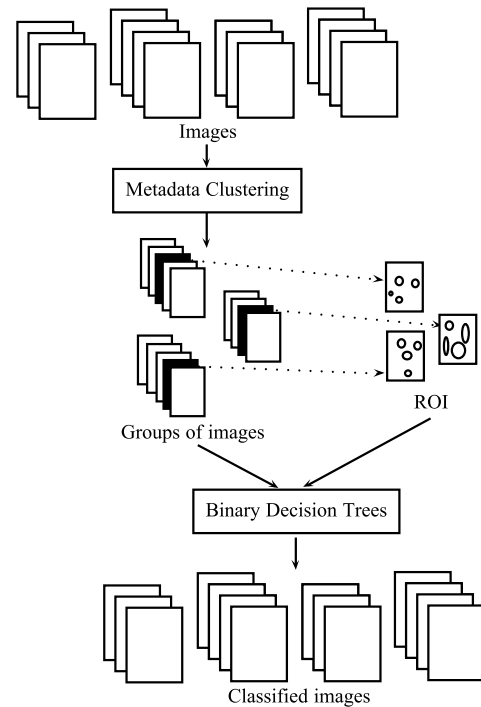


Fig. 1. Classification of a large image database using clustering and decision trees

group is composed of 20 images, experts would have to do only  $nbObj$  ROI (since we have  $nbObj$  classes of objects), instead of  $nbImg \times nbObj$ . The question is "how to group images?".

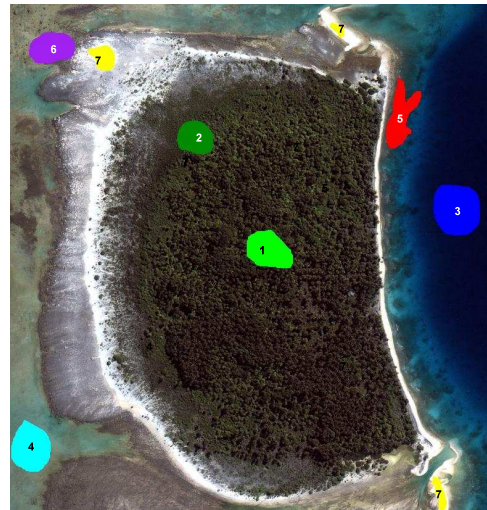


Fig. 2. Example of object classes

Images have different characteristics depending on acquisition time and position of the satellite. This affects the color and classification of these images. More generally, satellite images are provided with a set of metadata describing them and which may have an influence on classification (see table II). We focus on properties that potentially impact the spectral response of

TABLE I  
CLASSES USED

0	Unclassified	Black
1	Coconut Fields	Green
2	Other Vegetation	Dark green
3	Deep Water	Blue
4	Swallow Water	Cyan
5	Wet Coral	Red
6	Dry Coral	Purple
7	White Sand	White
8	Waves	Yellow
9	Man Made	Orange
10	Cloud	Gray

objects. For example, we select information about sun i.e. the azimuth and the elevation which have an effect on the illumination of the objects, and thus on their reflectance. The ocean surface may shine brightly according to the relative position of the sun w.r.t. satellite.

TABLE II  
EXAMPLE OF METADATA

Sun Angle Azimuth
Sun Angle Elevation
Nominal Collection Azimuth
Nominal Collection Elevation
Scan Azimuth
Scan Direction
Acquired Nominal GSD

The weather (windiness for example) would have been an other interesting information to describe the data but this information is lacking. As a consequence, we studied other parameters that could affect significantly images. Among them, we focus on parameters derived from image histogram. The idea is to group images with the same dynamic and contrast. More precisely, we extract from the histogram the first and third quartiles, and the inter-quartile as new image metadata.

Based on these metadata, we create an instance per image with the seven parameters presented (i.e. acquisition time, position of the satellite, azimuth, elevation, first quartile, third quartile and inter-quartile). Then, a clustering method is used to group images w.r.t. these metadata parameters. The method used to construct the clusters is *X-means* algorithm [6] (implemented in Weka API [14]). This method is an improvement of the classical method *K-means*. In *K-means*, the number of clusters is fixed by user, while in *X-means*, it is automatically calculated in an optimal way.

For each cluster (i.e. group of images), we compute the centroid value w.r.t. seven metadata and histogram parameters. The image which is the closest of the centroid is chosen as the "representative" of the group. This representative is used by expert to define ROI. Classification of any image of the group will use these ROI extracted from the "representative image". However all the images don't necessarily have all the classes of the class set. For example, cloud, coconut plantation or other classes can be absent and induce classification errors. In such a case, we choose as "representative image" the second,

the third, etc. closest image of the centroid.

### B. Improving decision tree classification by using RGB binary decomposition

Decision trees allow prediction of an individual membership in a class according to its characteristics. A decision tree is a classification method equivalent to a set of decision rules. C4.5 is one of the major reference in decision tree classification [8], [9]. In our approach, we use J48 implementation (in the Weka Platform [14]) which is an optimized version of C4.5 algorithm.

We have, for classification, a set of objects corresponding to pixels of images. The previous extracted ROI are used as a basic training set. We first construct a tree using the three RGB components, then we consider the binary codes of these components. This decomposition will allow the improvement of our results. Indeed, each component (R, G and B) is encoded on 11 bits, we thus obtain 33 binary attributes. For example, a pixel with values "255 0 27" would be encoded "0 0 0 1 1 1 1 1 1 1 1 0 0 0 0 0 0 0 0 0 0 0 0 0 0 0 0 0 0 1 1 0 1 1". We have 11 binary attributes per RGB component to represent the exact 256 possible values. If we compare this approach with a classical discretization approach, we will have 11 intervals such as [0,10], [11,21] etc. to represent approximatively an RGB component. Thus, the decision tree with the binary encoding are much more accurate than the one obtained after a discretization of RGB values. To have the same precision with a classical approach, we would have to consider the  $256 \times 3$  values of RGB components.

## IV. EXPERIMENTATIONS

### A. Experimentation protocol

Unfortunately we still have to plan a real ground truth mission in order to estimate the real performances of our method. Meanwhile, as the accuracy of R. Teina have been estimated and validated, in order to valid our approach, we compare our results, on four atolls (described in table III), with those obtained by R. Teina [10] with the same classes (i.e. the classes presented in table I). Results are compared w.r.t. coconut surfaces found. The idea is to evaluate quality of both approach.

TABLE III  
DESCRIPTION OF THE DATA USED IN OUR EXPERIMENTATIONS

Atoll name	Fangatau	Nukutavake	Vahitahi	Vairaatae
pixel resolution	0.8m	0.8m	0.8m	0.8m
size in MBytes	916.115	1 409.824	942.453	598.426

We conduct two tests :

- 1) First, we study the quality of our binary classification method. In these experiments, we use a dedicated set of ROI for each image.
- 2) Second, we evaluate the impact of our approach to reduce the number of ROI on classification quality. In these experiments, we consider one set of ROI for a group of "similar" image w.r.t. metadata. The impact



of selected metadata on classification quality is also studied.

### B. Classification results with binaries attributes

Table IV shows coconut surfaces found by our approach in comparison with the surfaces found in [11], [10]. Classification of images with the classes presented in table IV is visually satisfactory and surfaces of coconut plantations are closed to results obtained by [11], [10]. As we can see in table IV results are better with binaries values. Only image of Vahitahi atoll has an excessive coconuts surface. These classification errors are due to clouds, constructions, coral color and effect of wind and waves on the sea.

TABLE IV  
COCONUT PLANTATION SURFACES RESULTS (IN SQUARE METERS)

	Fangatau	Nukutavake	Vahitahi	Vairaatae
Our approach RGB attributes	6 070 097	3 403 047.5	3 711 583.2	1 954 993.6
Our approach Binaries attributes	4 877 639.5	3 355 070.5	4 197 018.5	2 005 360.9
Tenia's approach	4 809 770	3 315 760	2 579 720	2 439 110
Deviation	+1.4%	+1.1%	+62.69%	-17.78%

As clouds are transparent, their spectral response change significantly depending on floor below. Thus, good ROI are very difficult to realize and cloud are classified in many different classes including coconut plantations, as we can see on figure 3. The shadow of the cloud can lead to a false classification since pixels are darker. Modification of ROI would not be sufficient to correct this error, a solution is to preprocess images with classical methods of cloud processing.

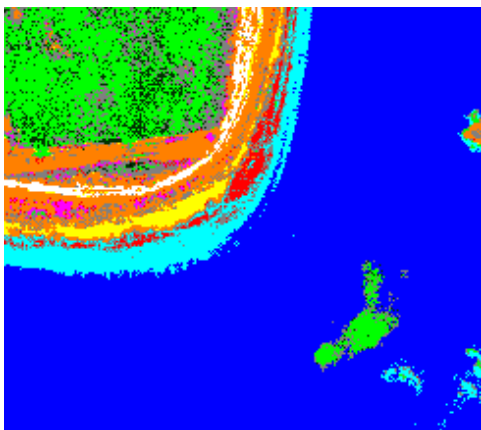


Fig. 3. Problem of cloud classification

“Man-made” constructions can take many different colors including some close to coral which can false other classes classification. To solve this problem, we classify images using the 11 classes presented in table I minus the “man-made” class. The result is better even if false classification occurs in “man-made” area. Note that “man-made” class is not really significantly extended in Tuamotu atolls. Those pixels are now labeled in different classes but not in the “coconut plantation” class, which is the only one of interest for our application.

The coral classification is particularly problematic, because some coral area are labeled as “coconut plantations”. We can see it in figure 4, which is a part of Vairaatae image, and where all green pixels are in reality coral. Coral may take many colors if it is dry or wet, including green. To correct this, we propose to replace the two classes “wet coral” and “dry coral” with “green coral”, “yellow coral”, “grey coral”, and “dark coral”. This leads to a better classification with less false coconuts. Indeed, coconut plantation surface of Vahitahi reduces to 3960642,5 and the classification is improved.

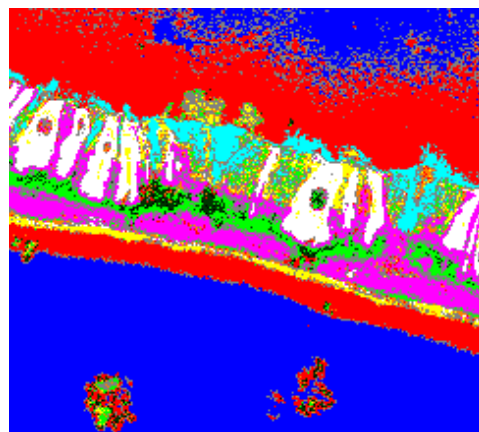


Fig. 4. Problem of coral classification

### C. Results with a set of ROI per cluster

In this section, we group images by clustering on metadata and histogram parameters. Then, we use the most representative image of each cluster to create ROI, and use these ROI as input for the classification in 11 classes.

First, we test 3 combinations of metadata parameters for the clustering:

- sun parameters
- sun and satellite parameters
- sun, satellite and histogram parameters

Table V shows the impact of using ROI from metadata clustering on the classification. Note that the same classification method is used for all these tests. We can easily see an important loss of quality compared to classification with images’ ROI. It leads to an increase of classification’s fuzziness and add glaring classification’s errors.

TABLE V  
PERCENTAGE OF DEVIATION FROM A CLASSIFICATION WITH ORIGINAL ROI

	Fangatau	Nukutavake	Vahitahi	Vairaatae
Sun	+0.39%	+127.64%	+488.73%	+38.44%
Sun and Satellite	-0.64%	-33.77%	-85.89%	+24.67%
Sun, Satellite and quartile	+73.93%	+59.40%	-42.34%	+267.82%

As shown by the table, the sun parameters greatly influence the image color, but are not sufficient enough to characterize images. Satellite parameters tends to improve results despite

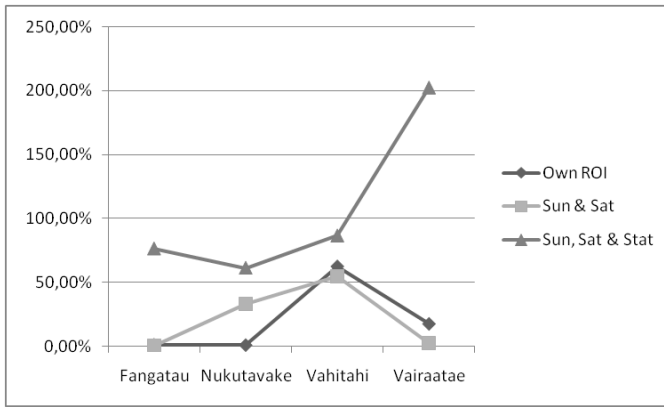


Fig. 5. Percentage deviation from the surface

a big classification error on the atoll of Nukutavake which doesn't concern coconut plantation (see figure 6). The image quartiles and inter-quartile decrease the classification quality, in particular for coconut plantation surfaces. Other image statistics should be tested to improve it.

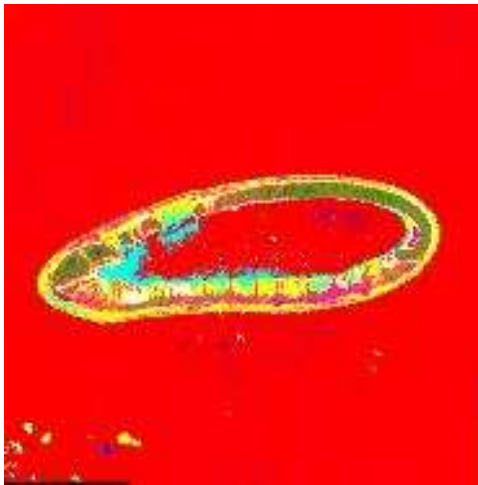


Fig. 6. Classification of Vahitahi with sun and sat parameters

As we have seen, our method results in lower classification quality than the classical "one set of ROI by image" classifications but the use of sun and satellite metadata leads to promising results (see table V, figure 5 and figure 7).

Time saving is really important w.r.t. classification with ROI of the image. Some improvement, as new statistics or new clustering method could improve the results. An other parameter could improve results: the method used to choose the representative image of the cluster. Indeed, we choose the image closest to the centroid, but, for example, the image with biggest density of image close to her could be more interesting.

## V. CONCLUSION AND PERSPECTIVES

In this paper, we show the interest of data mining methods to classify satellite images database. The first important point is the processing of a large database of images with

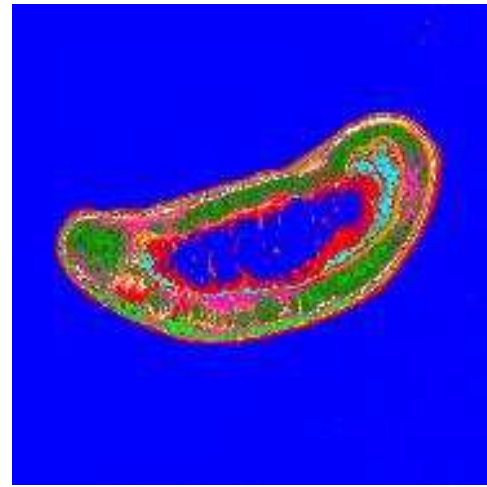


Fig. 7. Classification of Fangatau with sun and sat parameters

a reduction of human involvement. Clustering of images based on their metadata creates image subgroups sharing the same characteristics. Then, construction of ROIs on only one representative image for each subgroup reduces the number of ROIs creation. This initial work shows promising results and leads us to investigate more in order to improve the classification performances. For that, we propose to investigate a supervised classification method based on the well-known noisy tolerant patterns [3]. A ground truth mission will have to be conducted in a few Tuamotu atolls in order to assess more precisely the performances of our method.

## ACKNOWLEDGEMENT

The authors would like to thank the French Polynesia Government and its Urbanism division for providing the Ikonos images, Raimana Teina for the previous works on the coconut fields of the Tuamotu, Fred Jacq for the ground truth data and the Tuamotu inhabitants for letting us hanging around in their coconuts fields.

## REFERENCES

- [1] Gougeon François A. and Leckie Donald G. The individual tree crown approach applied to ikonos images of a coniferous plantation area. *Photogrammetric engineering and remote sensing*, 72(11):1287–1297, 2006.
- [2] Darius S. Culvenor. Tida: an algorithm for the delineation of tree crowns in high spatial resolution remotely sensed imagery. *Comput. Geosci.*, 28:33–44, February 2002.
- [3] Dominique Gay, Nazha Selmaoui-Folcher, and Jean-François Boulicaut. Application-independent feature construction based on almost-closedness properties. *Knowledge and Information Systems*, pages 1–25, 2010. 10.1007/s10115-010-0369-x.
- [4] K.G. Karantzalos and D. Argialas. Towards automatic olive tree extraction from satellite imagery. In *Proc. of the XXth ISPRS Congress*, Istanbul, Turkey, July 12-23 2004.
- [5] Olofsson Kenneth, Wallerman Jrgen, Holmgren Johan, and Olsson Hakan. Tree species discrimination using z/i dmc imagery and template matching of single trees. *Scandinavian journal of forest research*, 21(7):106–110, 2006.

- [6] Dan Pelleg and Andrew W. Moore. X-means: Extending k-means with efficient estimation of the number of clusters. In *Proceedings of the Seventeenth International Conference on Machine Learning, ICML '00*, pages 727–734, San Francisco, CA, USA, 2000. Morgan Kaufmann Publishers Inc.
- [7] G. Perrin, X. Descombes, and J. Zeubia. Evaluation des ressources forestières à l'aide de processus ponctuels marqués. In *Proc. Reconnaissance des Formes et Intelligence Artificielle (RFIA06)*, Tours, France, 2006.
- [8] J. Ross Quinlan. Induction of decision trees. *Machine Learning*, 1(1):81–106, 1986.
- [9] J. Ross Quinlan. *C4.5: Programs for Machine Learning*. Morgan Kaufmann, 1993.
- [10] Raimana Teina. *La caractérisation de la cocoteraie des Tuamotu à partir d'images satellites à très haute résolution spatiale*. PhD thesis, Univ. of Paris, France, september 2009.
- [11] Raimana Teina, Dominique Béréziat, Benoit Stoll, and Sébastien Chabrier. Toward a global tuamotu archipelago coconut trees sensing using high resolution optical data. In *Proc. IEEE International Geoscience & Remote Sensing Symposium IGARSS'08*, pages 290–294, Boston, USA, January 2008.
- [12] L. Vincent and P. Soille. Watersheds in digital spaces: an efficient algorithm based on immersion simulations. *Pattern Analysis and Machine Intelligence, IEEE Transactions on*, 13(6):583–598, jun 1991.
- [13] L Wang, P Gong, and G S Biging. Individual tree-crown delineation and treetop detection in high-spatial-resolution aerial imagery. *Photogrammetric Engineering Remote Sensing*, 70(3), 2004.
- [14] Ian H. Witten and Eibe Frank. *Data Mining : Practical machine learning tools and techniques (2nd edition)*. Morgan Kaufmann Publishers Inc., San Francisco, USA, 2005.