



HAL
open science

The mangroves in Guadeloupe: a suspended ecosystem under anthropic pressures

Valérie Angeon, Fred Burner, Aurélie Colomb, Sébastien Cordonnier, Didier Galop, Silvina Gonzalez-Rizzo, Vincent Hervé, Daniel Imbert, Patrick Jean-Louis, Josie Lambourdière, et al.

► **To cite this version:**

Valérie Angeon, Fred Burner, Aurélie Colomb, Sébastien Cordonnier, Didier Galop, et al.. The mangroves in Guadeloupe: a suspended ecosystem under anthropic pressures. International Symposium of LabEx DRIIHM 2022, LabEx DRIIHM OHMi Nunavik CNRS-InEE, Jun 2022, Nantes, France. 10.34972/driihm-41d8b9 . hal-03789658

HAL Id: hal-03789658

<https://hal.science/hal-03789658>

Submitted on 27 Sep 2022

HAL is a multi-disciplinary open access archive for the deposit and dissemination of scientific research documents, whether they are published or not. The documents may come from teaching and research institutions in France or abroad, or from public or private research centers.

L'archive ouverte pluridisciplinaire **HAL**, est destinée au dépôt et à la diffusion de documents scientifiques de niveau recherche, publiés ou non, émanant des établissements d'enseignement et de recherche français ou étrangers, des laboratoires publics ou privés.

The mangroves in Guadeloupe: a suspended ecosystem under anthropic pressures

Valérie Angeon, Fred Burner, Aurélie Colomb, Sébastien Cordonnier, Didier Galop, Silvina Gonzales-Rizzo, Vincent Hervé, Daniel Imbert, Patrick Jean-Louis, Josie Lambourdière, Pascal Jean Lopez, Gladys Loranger, Corinne Pardo, Malika René-Trouillefou, Alain Rousteau, Mickael Vaitilingom

« 2012-2022: ten years of OHM results" Session

Why mangroves matter ?

- Home to many species & Nursery grounds
- Stabilizing coastlines & Shelter from the storm
- Carbon storage : $\sim 4\%$ (range 1.3–8%) of C_{org} sequestered by terrestrial ecosystems
- Resources for humans

Mangroves are sustainable solutions for climate change in the Caribbean



Main threats to mangroves

- Climate change: Tsunamis, Hurricanes, Sea level rise ...
- Land-use conversion to agriculture and aquaculture
- Pollutions: Marine litter, Microplastic pollution, Urban wastes, Household waste, Electrical and electronic waste ...



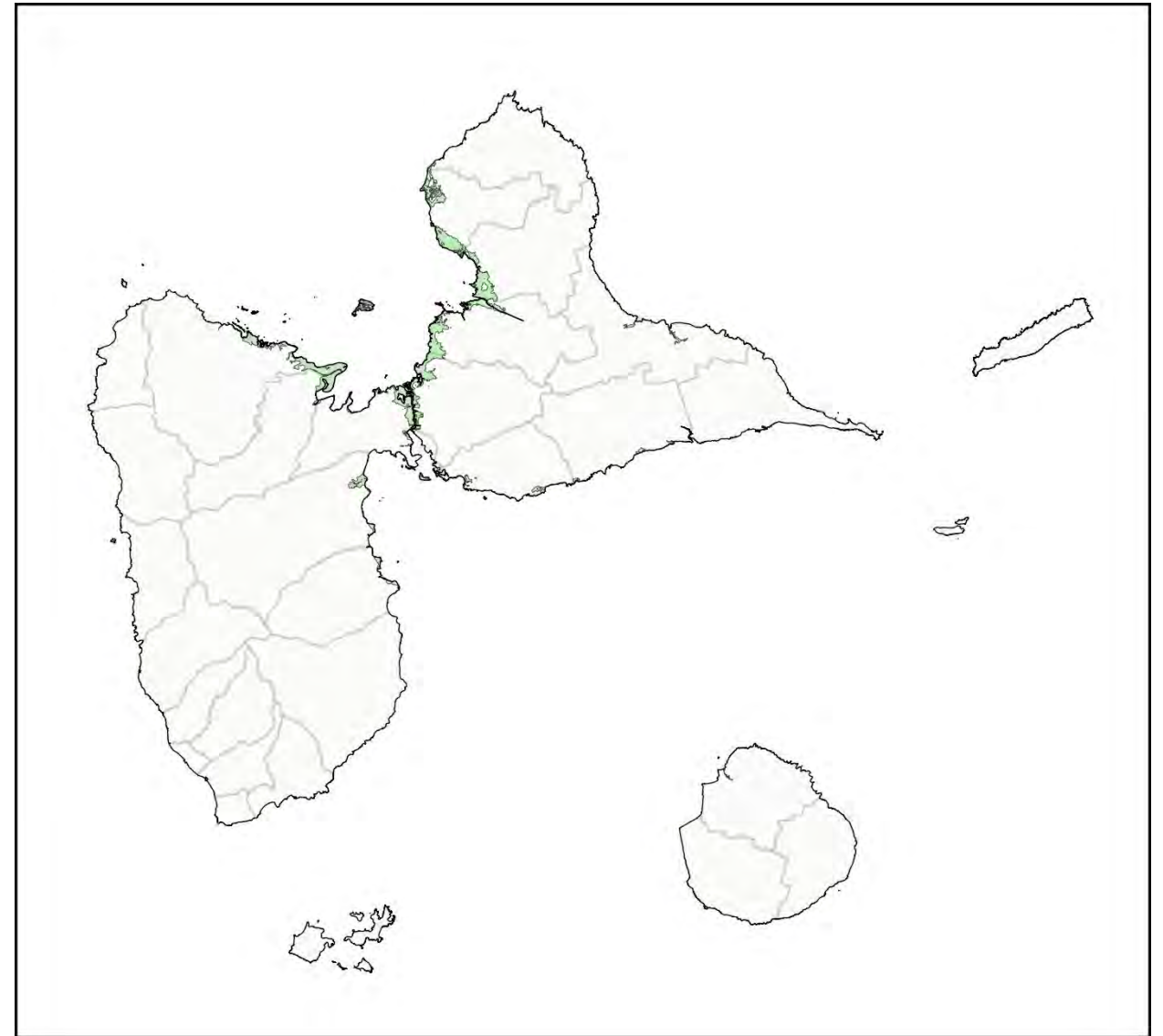
Rivière salée



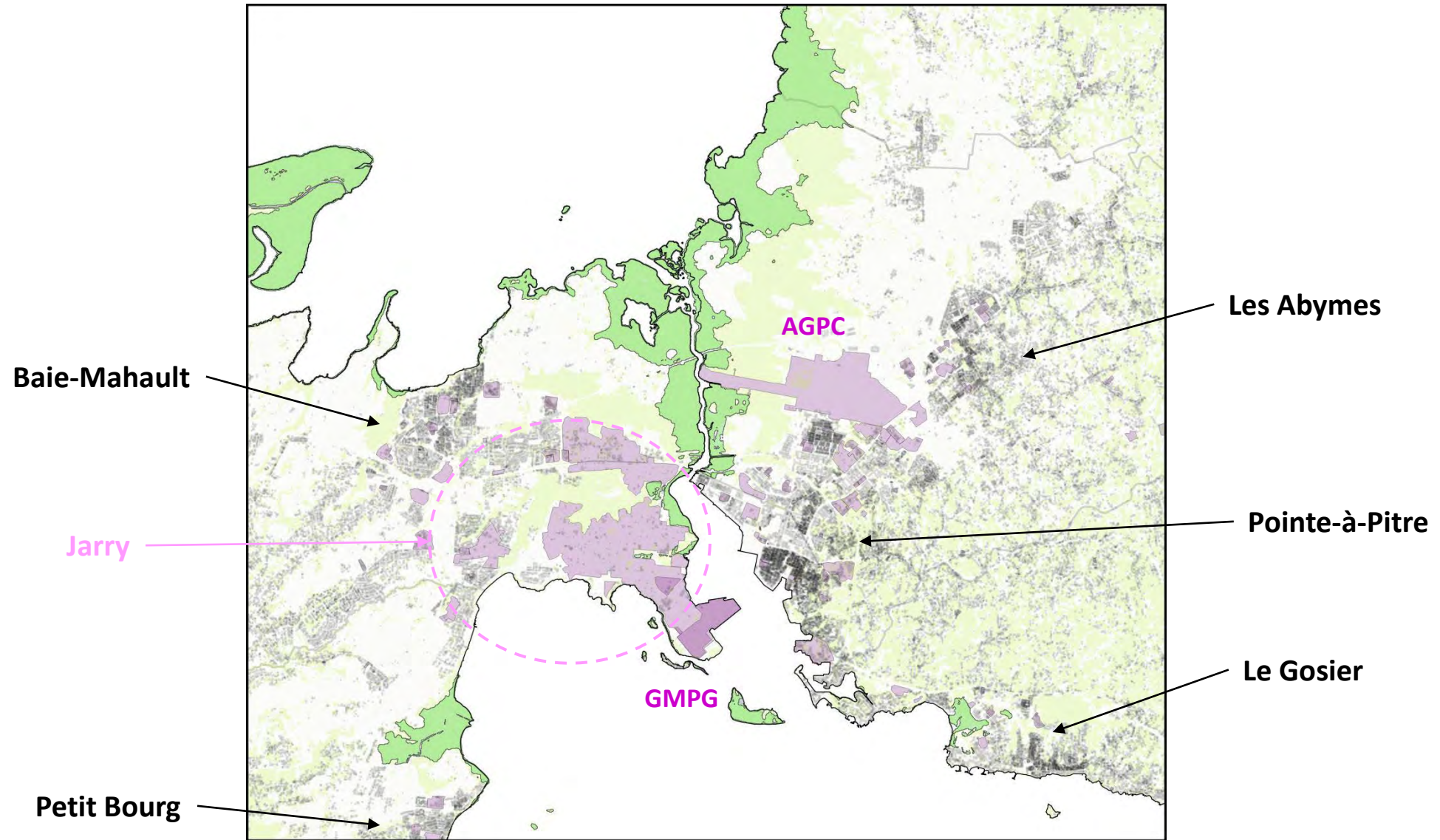
Le Gosier

Where are the mangroves in Guadeloupe?

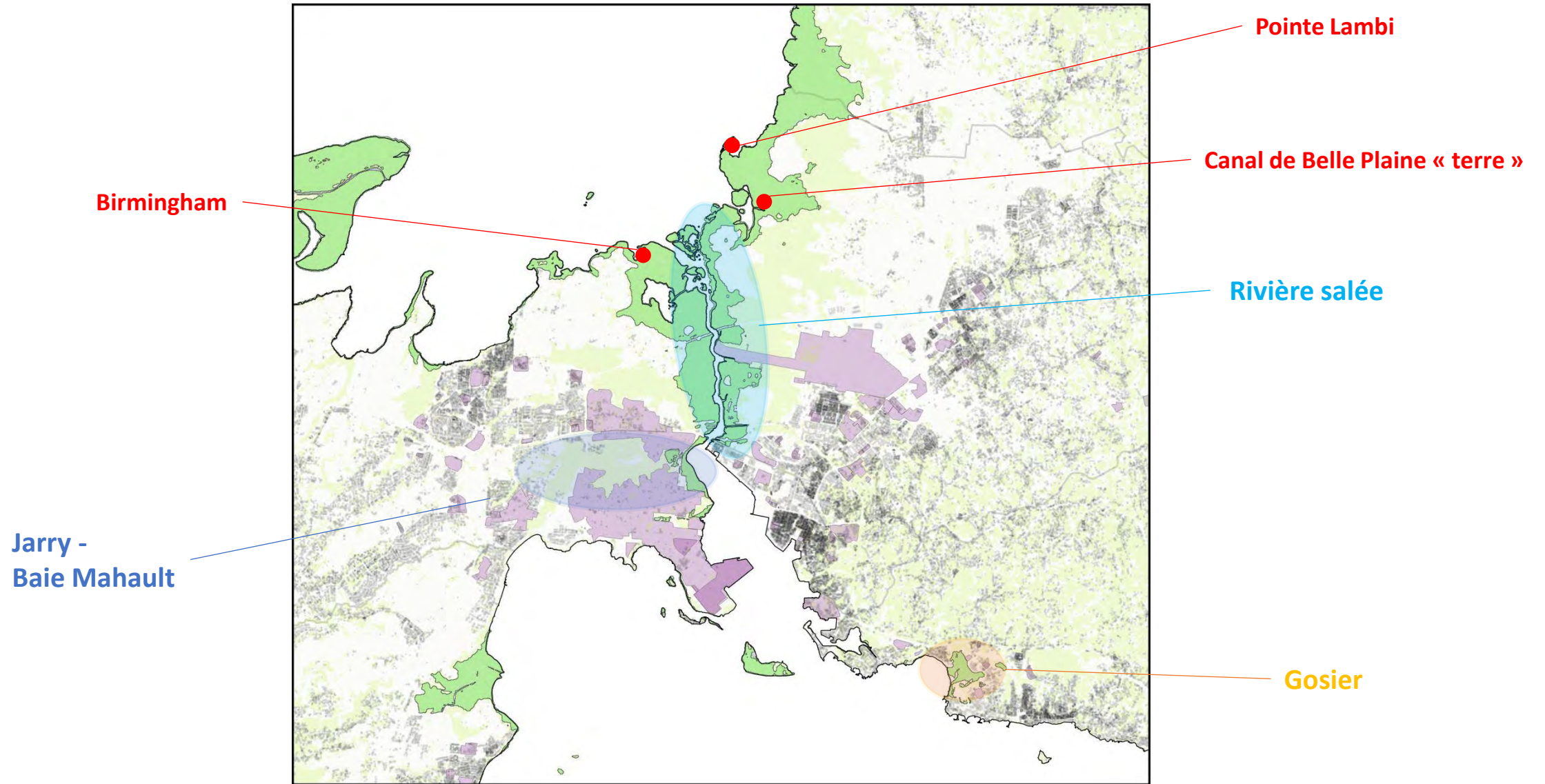
Territories	Surface (km ²)	Mangroves (km ²)	%
Guyane	83846	531,06	0,6%
Nouvelle-Calédonie	18519	281,73	1,5%
Guadeloupe	1628	33,06	2,0%
Martinique	1128	18,56	1,6%
Europa	28	6,26	22,4%
Mayotte	374	6,23	1,7%
Polynésie française	4167	0,411	0,0%
Wallis	96	0,362	0,4%
Saint-Martin	95,83	0,242	0,3%
Saint-Barthélemy	21	0,041	0,2%
Juan de Nova	4,8	0,0023	0,0%



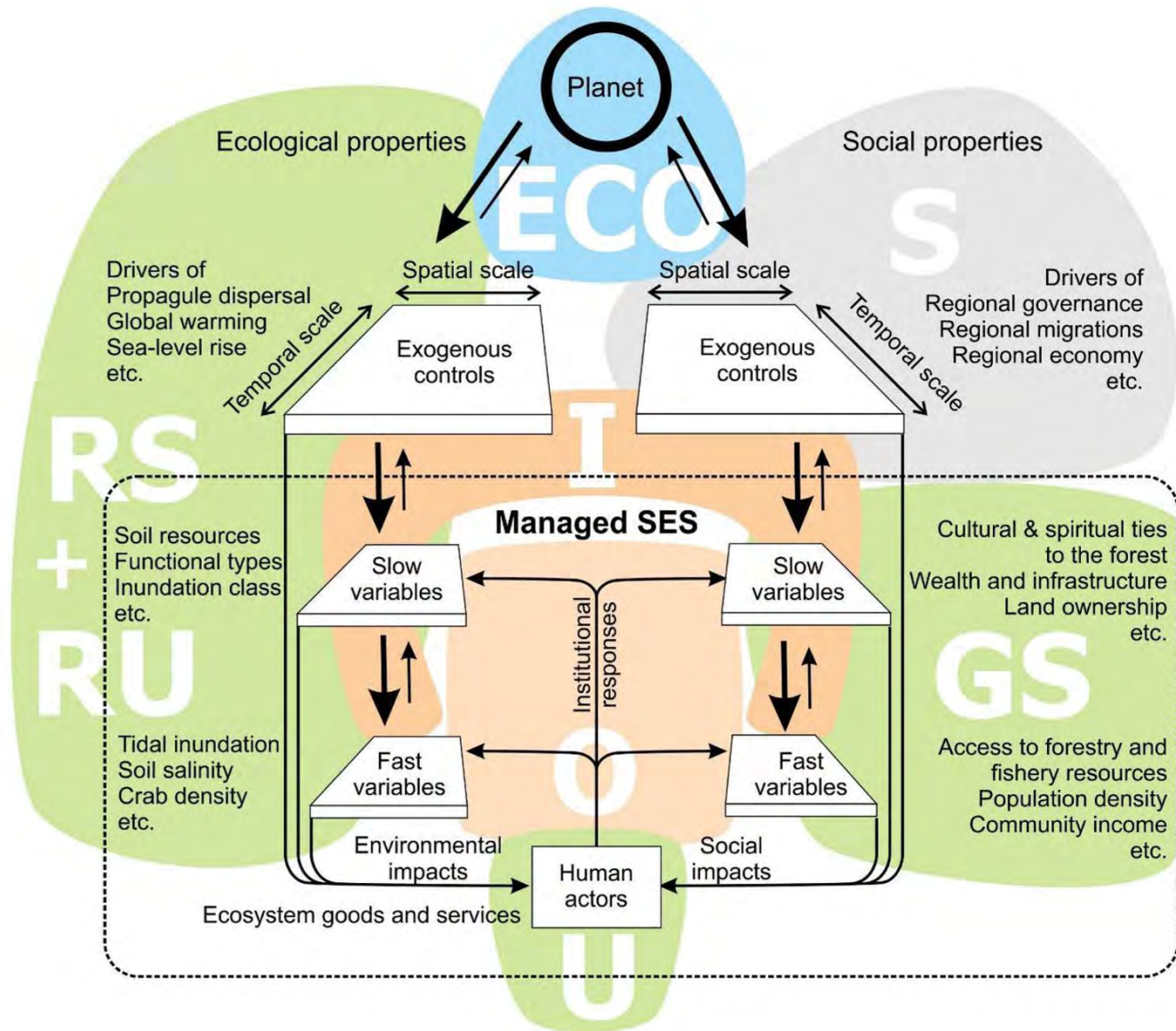
The mangroves are surrounded by commercial, industrial and residential areas



Principal mangrove study areas



Mangroves : a complexe & integrated Social-Ecological System (SES)



- S = Social, economic and political settings
- RS = Resource Systems
- RU = Resource Units
- GS = Governance Systems
- U = Users
- I = Interactions
- O = Outcomes
- ECO = Related Ecosystems

From: Farid Dahdouh-Guebas, F. et al. (2021)
Estuarine, Coastal and Shelf Science, **248**, 106942

Mangrove action projects by OHM Littoral Caraïbe and DRIIHM

SES-RS: Equilibrium properties, Productivity of system, Storage characteristics, Clarity of system boundaries

SES-RU: Growth or replacement rate

SES-ECO: Pollution patterns

- Elévation de la Mer dans les Mangroves des Antilles (EMMA) : dynamique de la végétation côtière au cours des 6 derniers millénaires (2017)
- EMERAUDE : Ecologie microbienne des eaux urbaines et marines de Guadeloupe (2017)
- COMMANGA : Communautés microbiennes des mangroves Guadeloupéennes et anthropisation (2019)
- Emission de composés organiques volatils par les palétuviers du Petit Cul-de-sac marin (2019)

SES-U: Socio-cultural services

SES-RS: Clarity of system boundaries (*e.g.* fragmentation, fringing mangroves burnt to expand paddy cultivation)

SES-I: Conflicts among users

- EducOHM - Mangroves (2020)
- EVOLUM - EVOLution des représentations et Perception du changement des Mangroves (2022)
- Caractérisation des pratiques agricoles et aquacoles traditionnelles en zones littorales de sous-bois de Guadeloupe : cas des culs de sac marin, versant Basse-Terre (2020)

SES-RS: Equilibrium properties, Productivity of system, Storage characteristics, Clarity of system boundaries

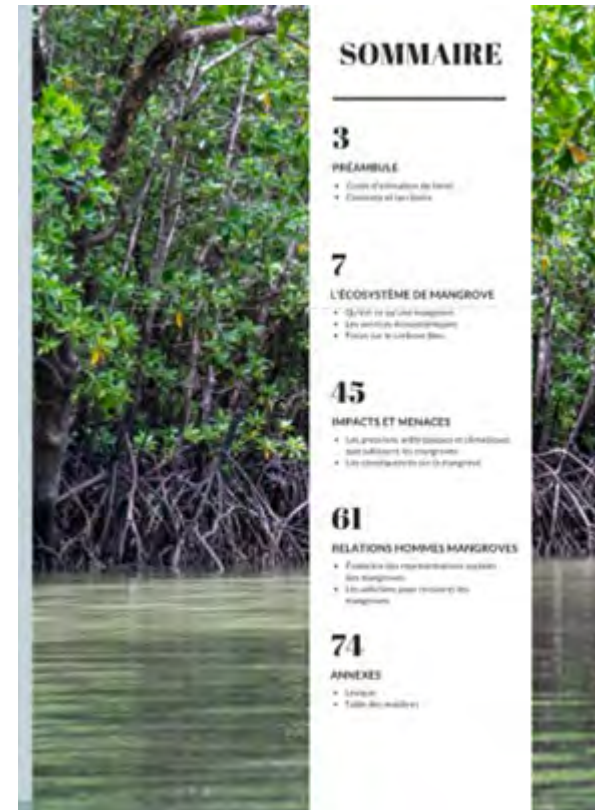
SES-RU: Growth or replacement rate

SES-GS: Property-rights systems

SES-ECO: Pollution patterns

SES-I: Conflicts among users

- JA-COMO: Cartographie des communautés microbiennes et décomposition de la matière organique au sein de la ZAC de Jarry (2022)



SOMMAIRE	
3	PRÉAMBULE <ul style="list-style-type: none">• Contexte d'élaboration du livret• Éléments de la notice
7	L'ÉCOSYSTÈME DE MANGROVE <ul style="list-style-type: none">• Définition de l'écosystème• Les services écosystémiques• Risques sur le littoral
45	IMPACTS ET MENACES <ul style="list-style-type: none">• Les pressions, avec l'impact de l'érosion et l'élévation du niveau de la mer• Les menaces pour l'écosystème
61	RELATIONS HOMMES MANGROVES <ul style="list-style-type: none">• Fonction des mangroves pour les humains• Les menaces pour l'écosystème
74	ANNEXES <ul style="list-style-type: none">• Sommaire• Table des matières

Cycle 4 [further learning]: 5^e, 4^e, 3^e

3 key thematic areas

- Mangrove ecosystem, definition and characterization
- Anthropic and climatic pressures
- Mangroves and people: Impacts and interactions

7 Subsections

9 Activity statements

Evolution of representations and perceptions of change in mangroves [SES-U]

Objectives:

- ✓ **Enrichment of the existing document** by the integration of new sheets dealing with wetland ecosystems, specificities of Guyana's mangroves and more social representations
- ✓ **Development of the third axis** of the booklet in terms of **Human/Environment interactions**, and more precisely on the evolution of social representations of mangroves
- ✓ **Translation of some materials into local languages** and the drafting of a thesaurus "Mangrove" in Portuguese / Antillean and Guyanese Creoles / Palikur ...
- ✓ **Adaptation of some subsections to Cycle 3 [Consolidation cycle]:** CM1, CM2, 6^e



A bipolarized perception of mangroves:

- **Between idealization and repulsion**

- Hostile environment (difficult to access, untamable, dangerous, evil, deadly, etc.)
- Matriarchal figure: cradle, source of life, rebirth, contemplative space

- **Vernacular and scientific knowledge not always in phase**

- Identification and recognition of functions and services by stakeholders not always proven, although scientific knowledge exists
- Difficulties in appropriating knowledge

Representations associated with mangroves :

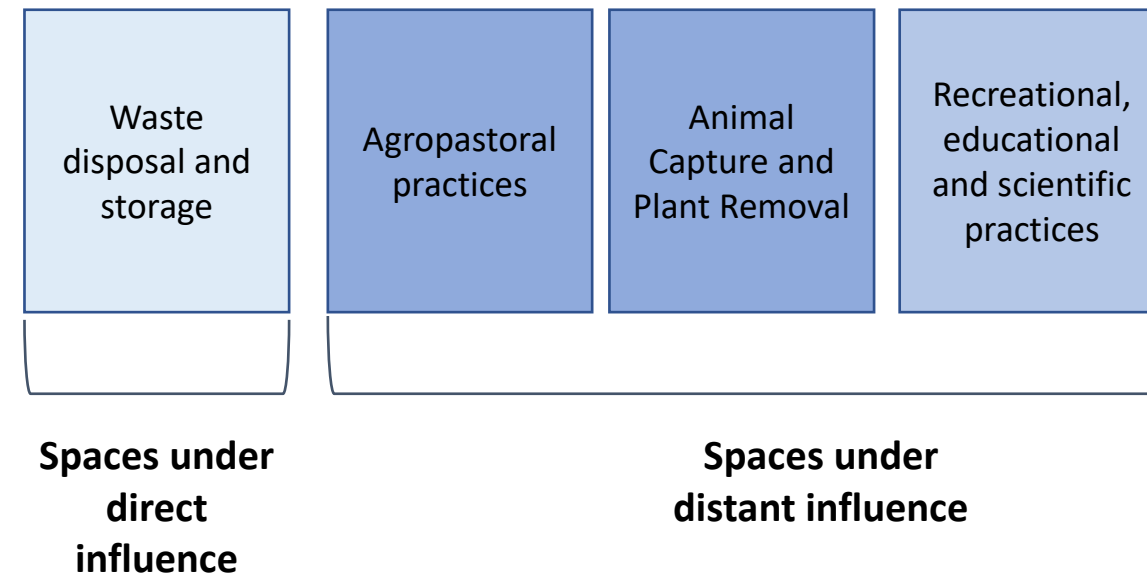
The mangrove is not a subject in itself

- ≠ object of attention
- = unthought of by farmers
- = problems for local residents: humidity, hygiene, presence of insects

The mangrove is a functional object

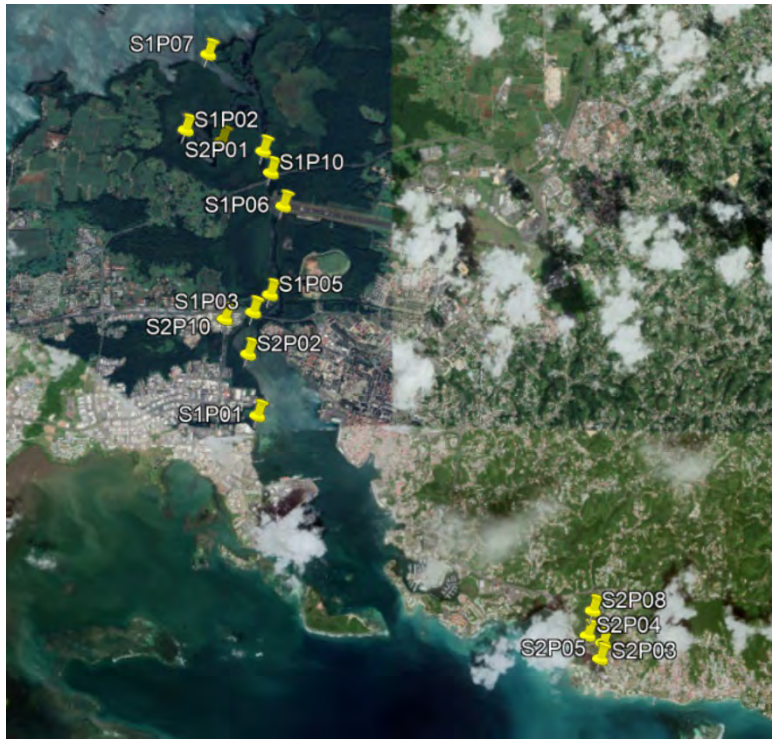
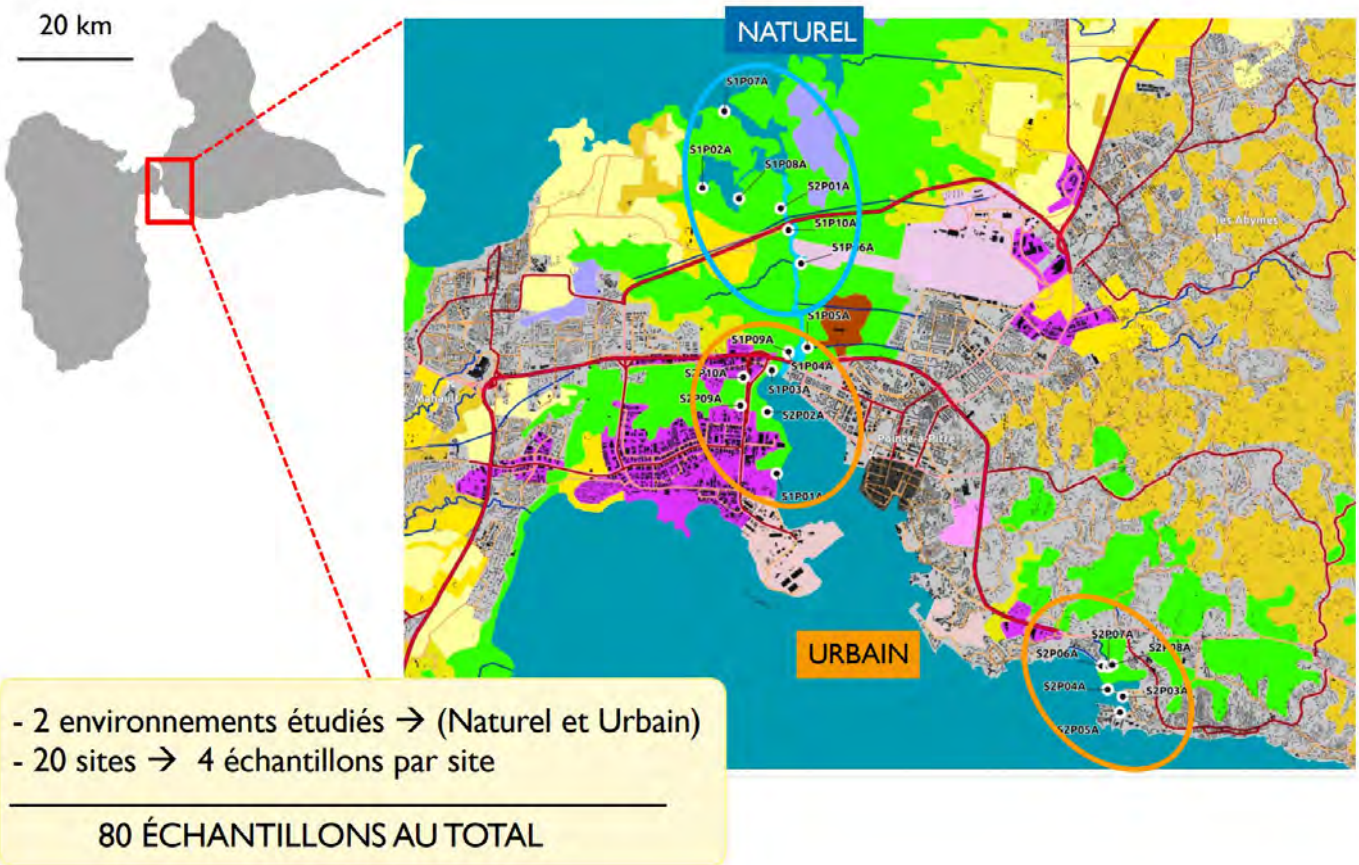
- Gaining ground on the environment: sanitizing, draining and draining to cultivate
- Propitious to rejection and waste

Typology of uses :



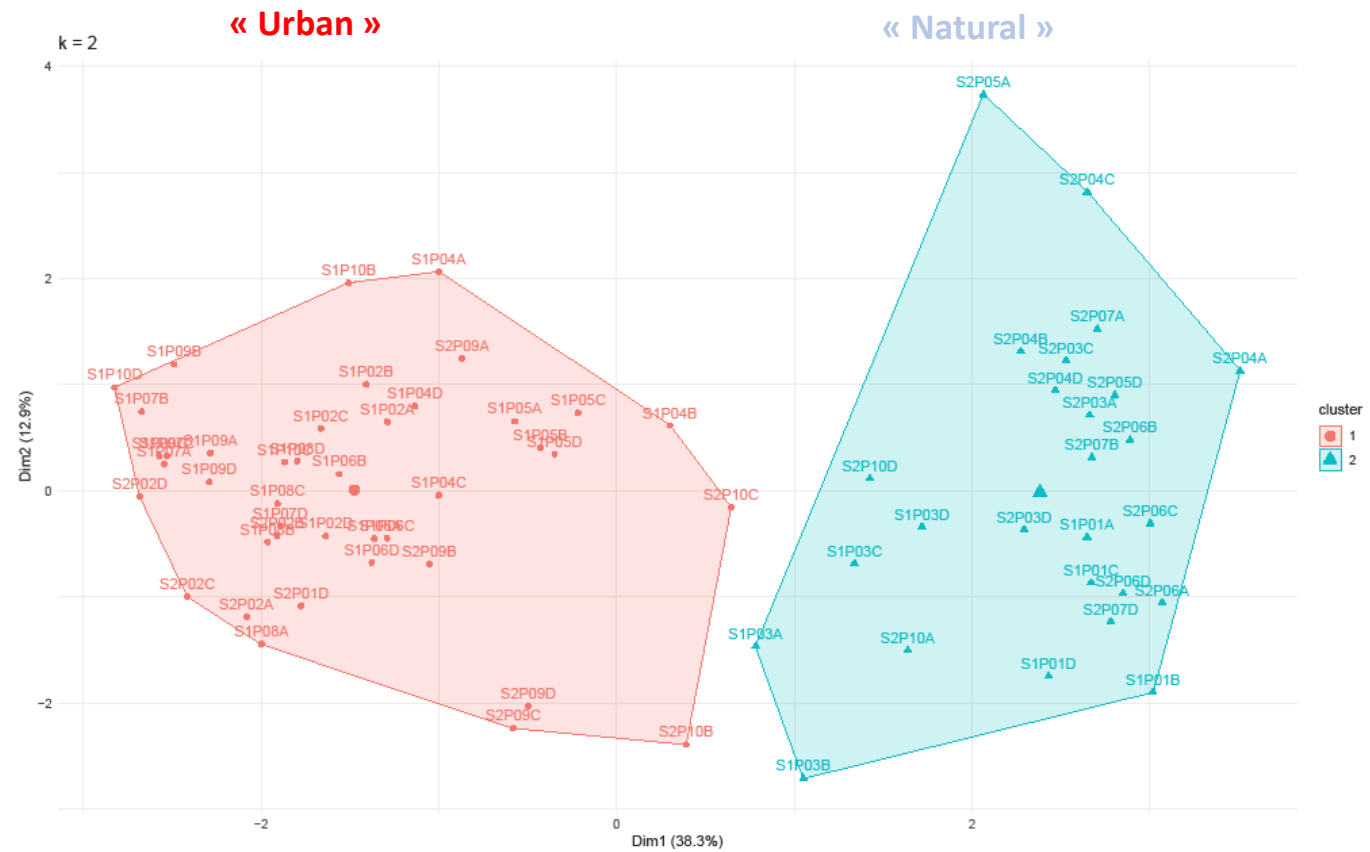
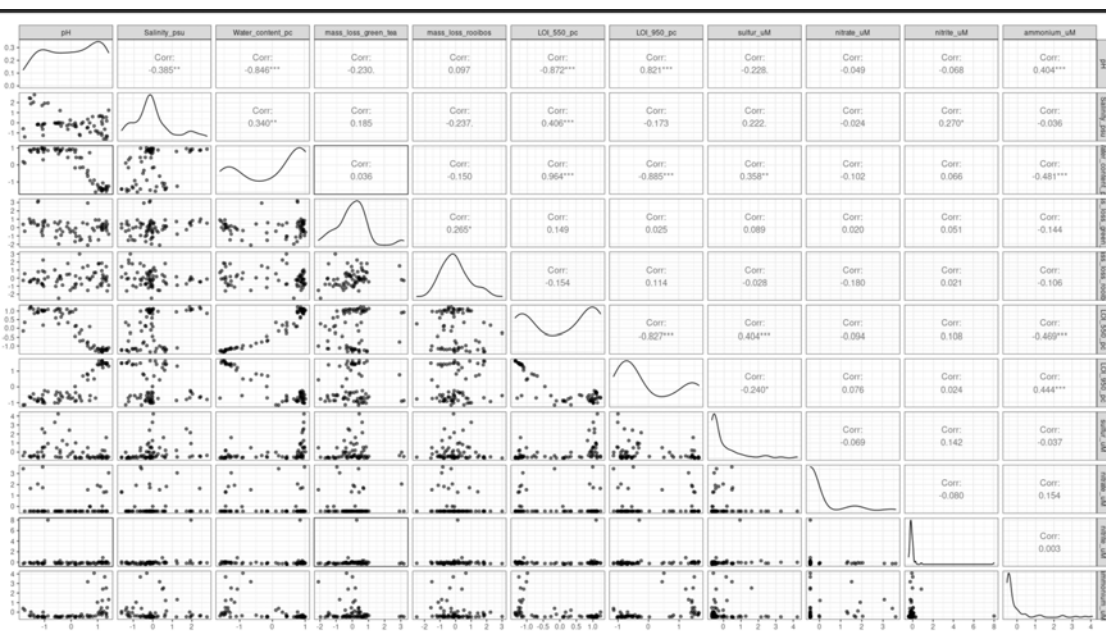
Microbial communities of Guadeloupean mangroves and anthropization [SES-RS / SES-RU / SES-ECO]

What are the links between eukaryotic and procaryotic communities ?
What is the influence of the distance to anthropization areas ?

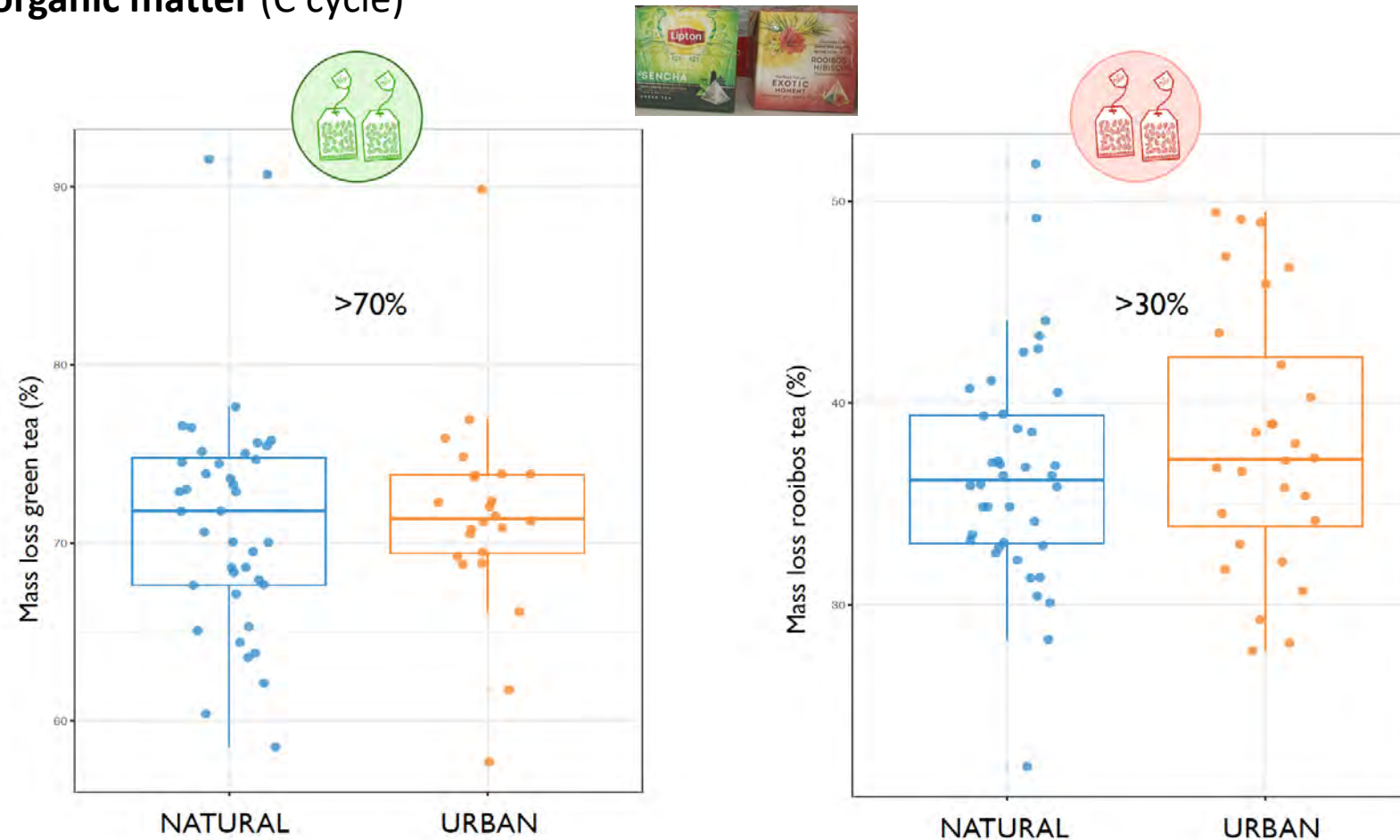


Microbial communities of Guadeloupean mangroves and anthropization [SES-RS / SES-RU / SES-ECO]

Biochemistry



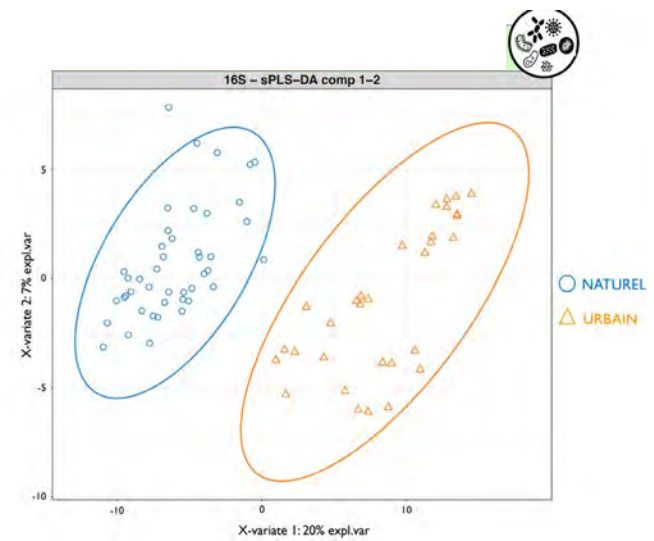
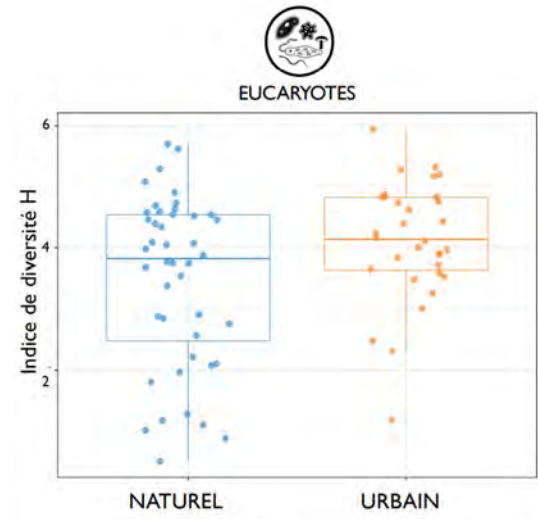
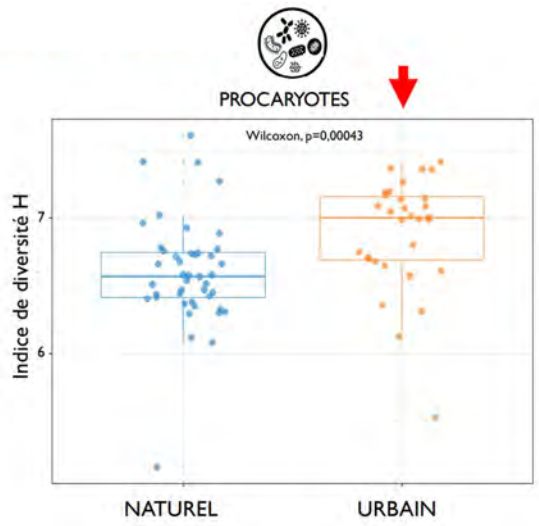
Decomposition of organic matter (C cycle)



Functional redundancy of microbial communities ?

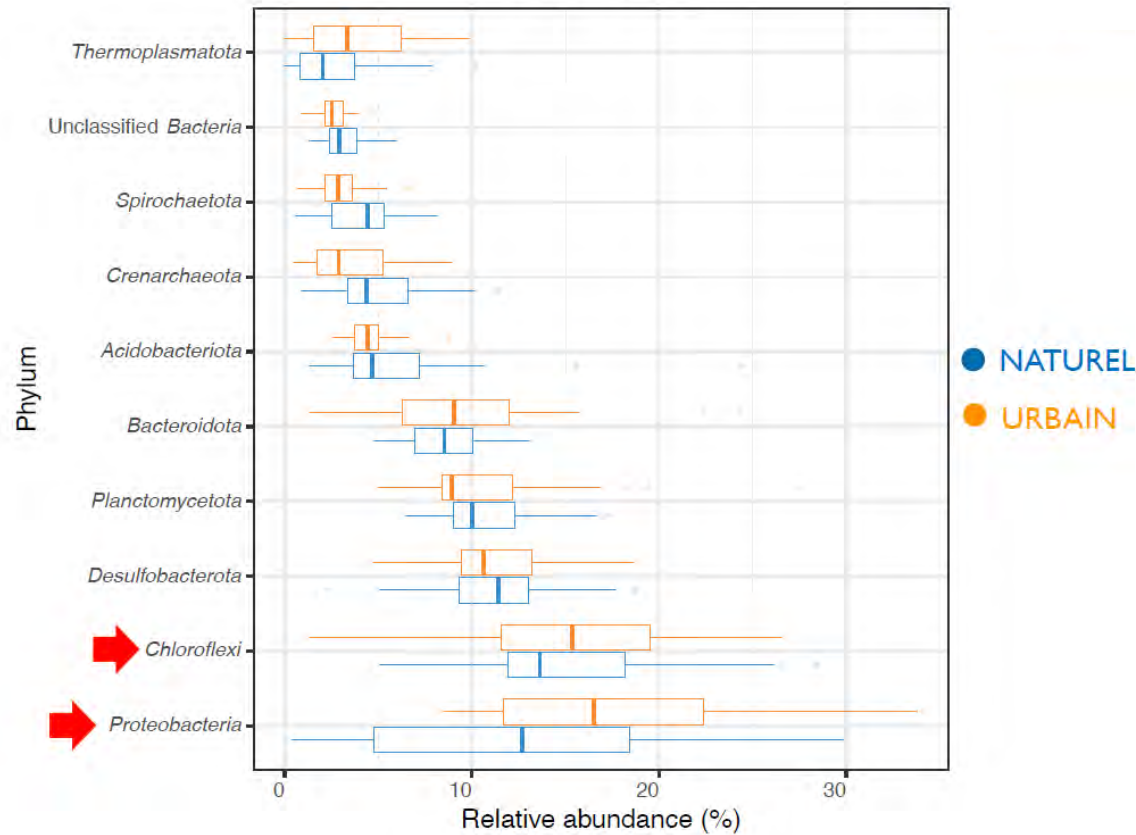
Microbial communities of Guadeloupean mangroves and anthropization [SES-RS / SES-RU / SES-ECO]

Richness: 50,399 Procaryotic OTUs
13,155 Eucaryotic OTUs



Alpha diversity analyses reveal that the prokaryotic diversity in the « urban's » mangrove is higher than in the « natural » ones

Beta diversity analyses reveal that prokaryotic communities present in the « urban » and « natural » mangroves are clearly distinct



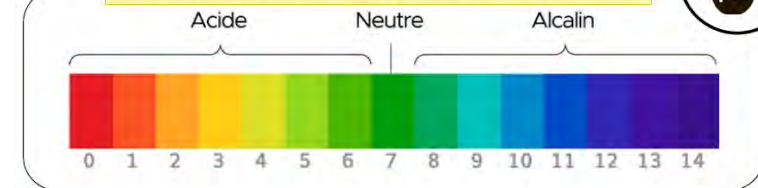
50 OTUs DISCRIMINANTES IDENTIFIEES

2 OTUs du phylum CHLOROFLEXI

OTU 10 → URBAIN

OTU 08 → NATUREL

En fonction du pH du milieu



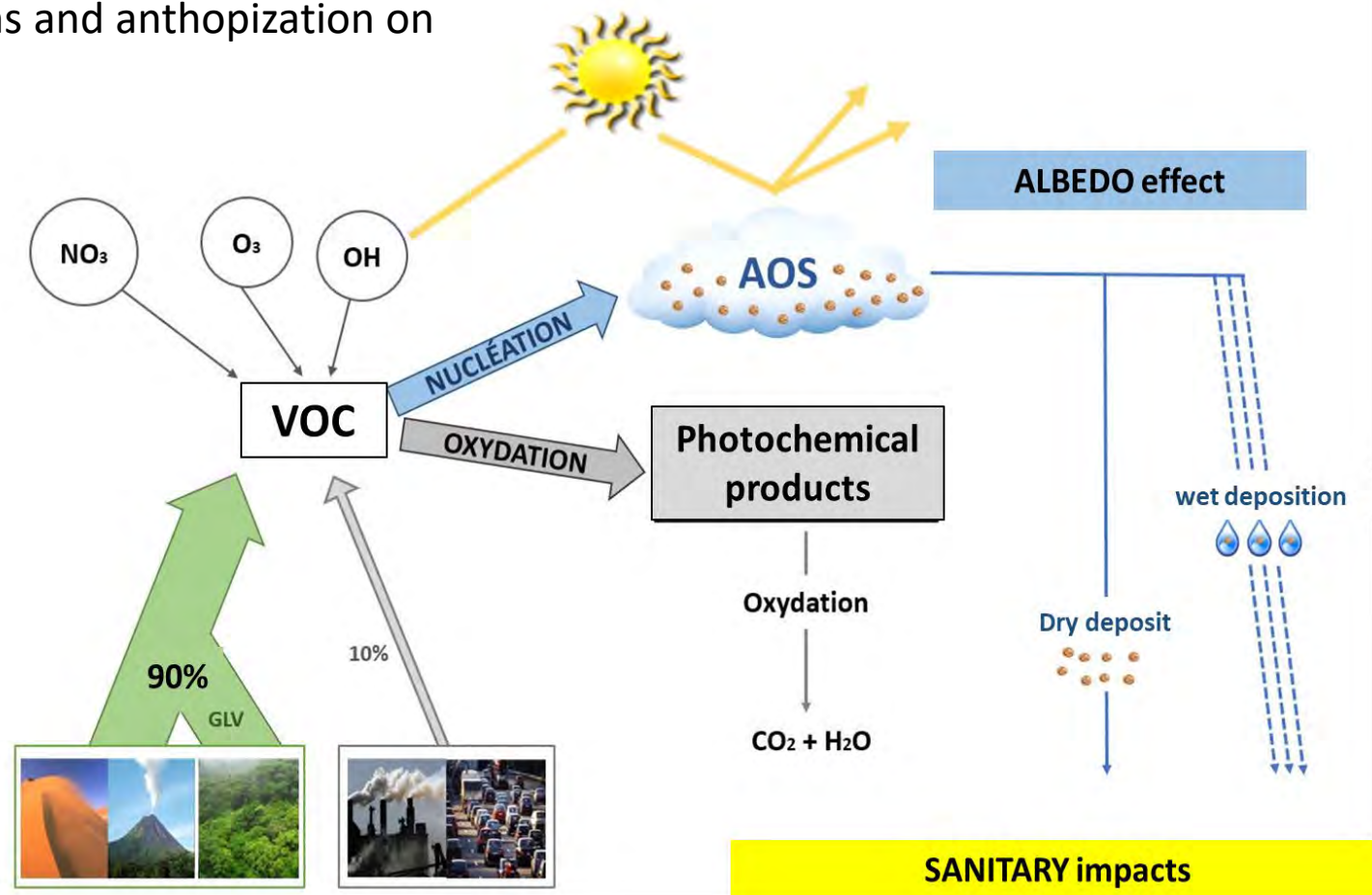
Identification of prokaryotic environmental biomarkers

Emission of volatile organic compounds by mangroves in the Petit Cul-de-sac marin

[SES-RS / SES-RU / SES-ECO]

What are the Volatil Organic Compounds (VOC) emitted by mangroves trees?

What is the influence of the meteorological conditions and anthropization on these VOCs emission ?



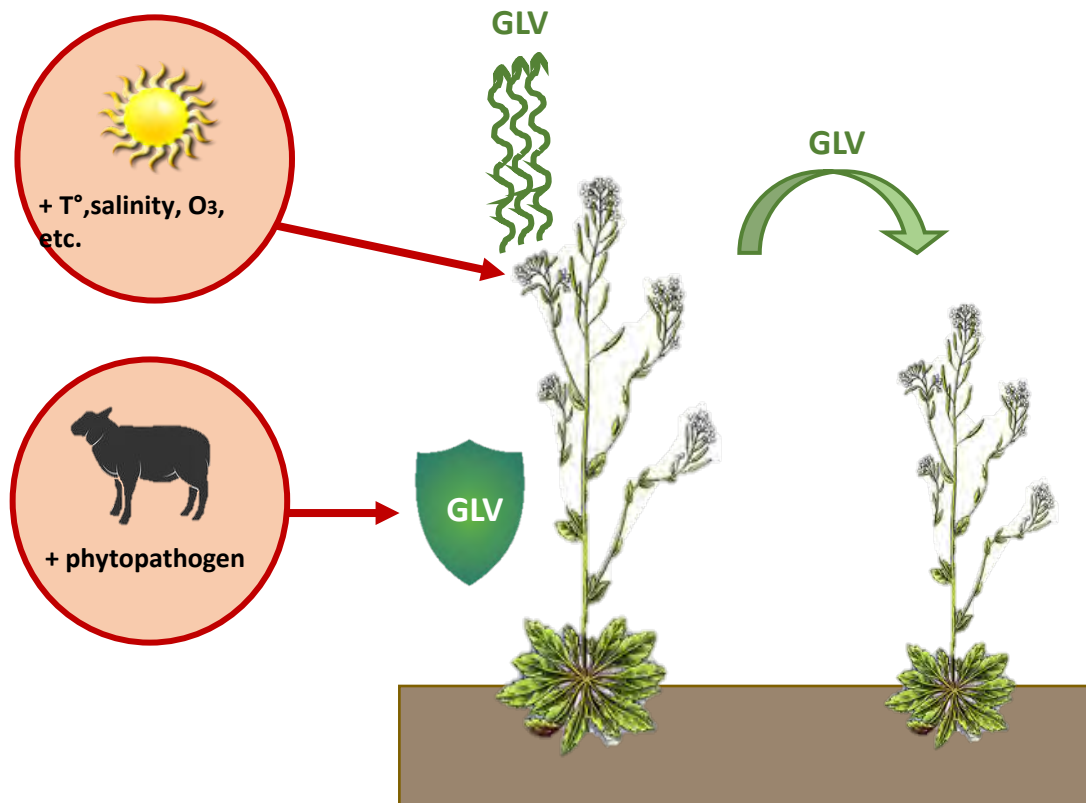
« 2012-2022: ten years of OHM results" Session

Emission of volatile organic compounds by mangroves in the Petit Cul-de-sac marin

[SES-RS / SES-RU / SES-ECO]

Under stressful conditions, the forest react by producing VOCs, also call Green Leaf Volatils compounds (GLVs)

These GLVs is a way of communication between trees but also a defense against pathogens and physical damages



Example: Inflammable are produce by some trees in drought condition

→ **ELEMENT TERRE**

Portugal : l'eucalyptus met le feu aux poudres



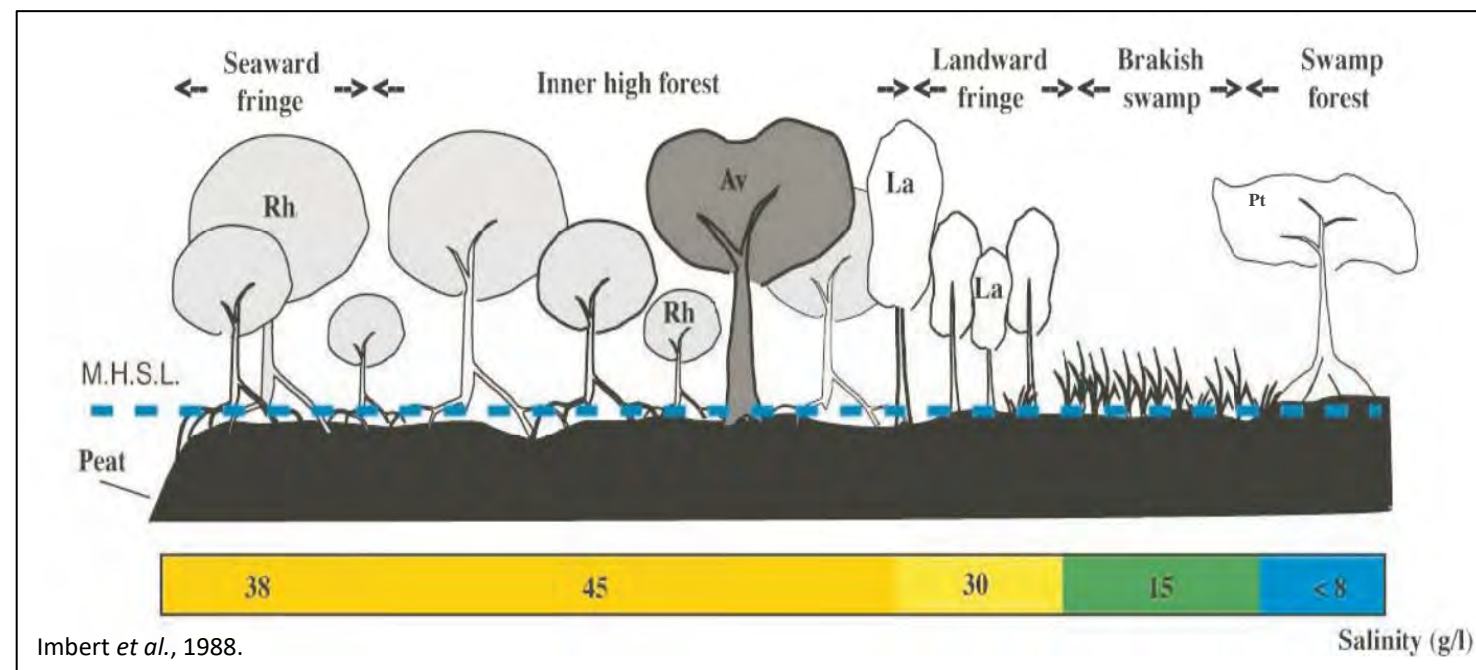
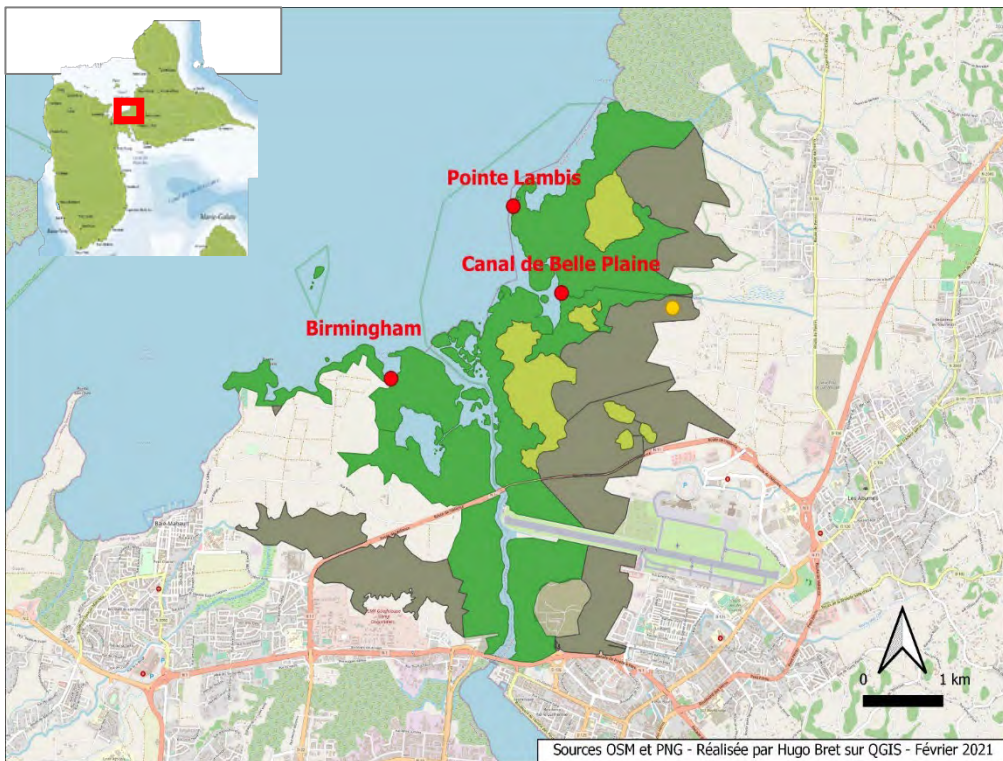
Publié le : 13/07/2018 - 17:14



« 2012-2022: ten years of OHM results" Session

Emission of volatile organic compounds by mangroves in the Petit Cul-de-sac marin

[SES-RS / SES-RU / SES-ECO]



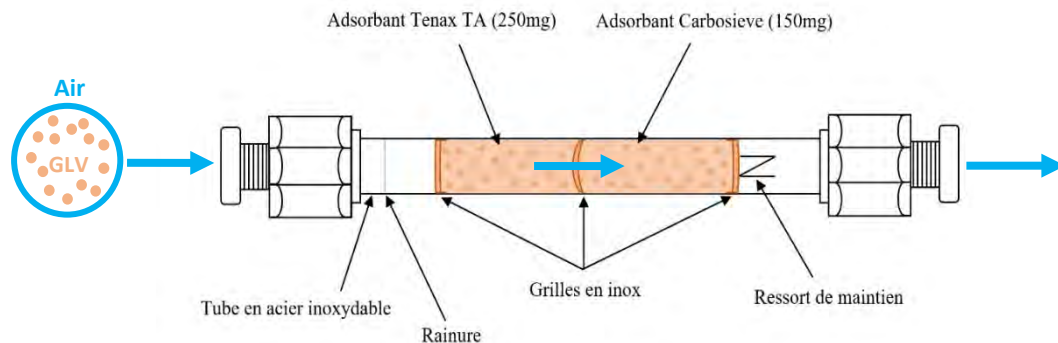
Rh : *Rhizophora mangle* (palétuvier rouge)
La : *Laguncularia racemosa* (palétuvier blanc)

Av : *Avicennia germinans* (palétuvier noir)
Pt : *Pterocarpus officinalis* (mangle-médaille)

« 2012-2022: ten years of OHM results" Session

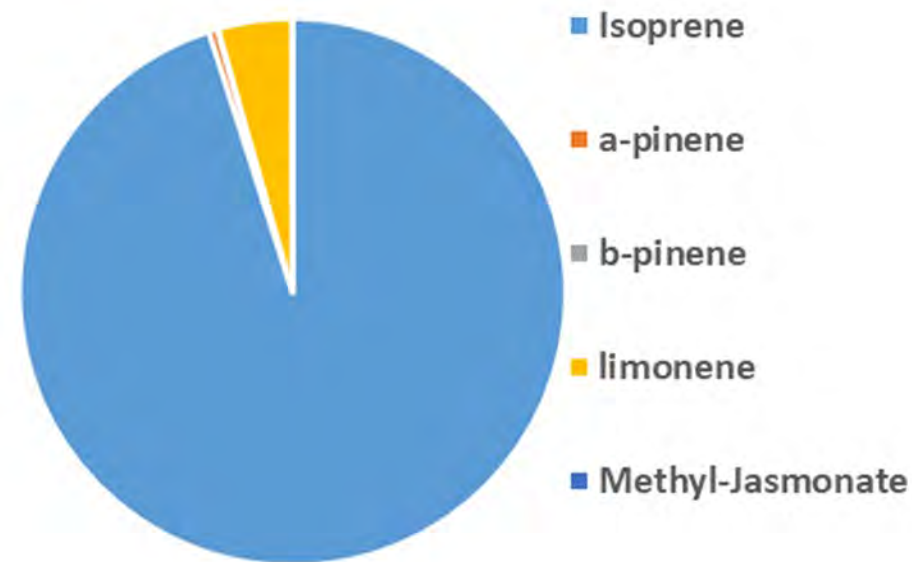
Emission of volatile organic compounds by mangroves in the Petit Cul-de-sac marin

[SES-RS / SES-RU / SES-ECO]



Preliminary result of the first year of sampling

Canal de Belle Plaine

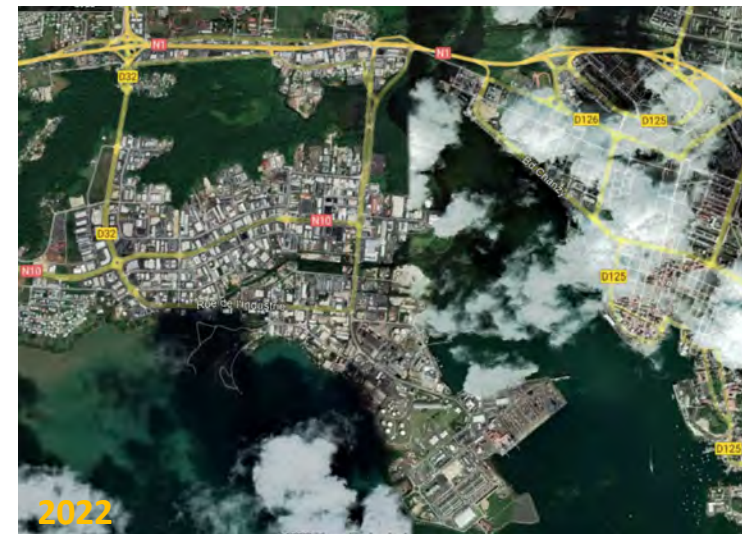
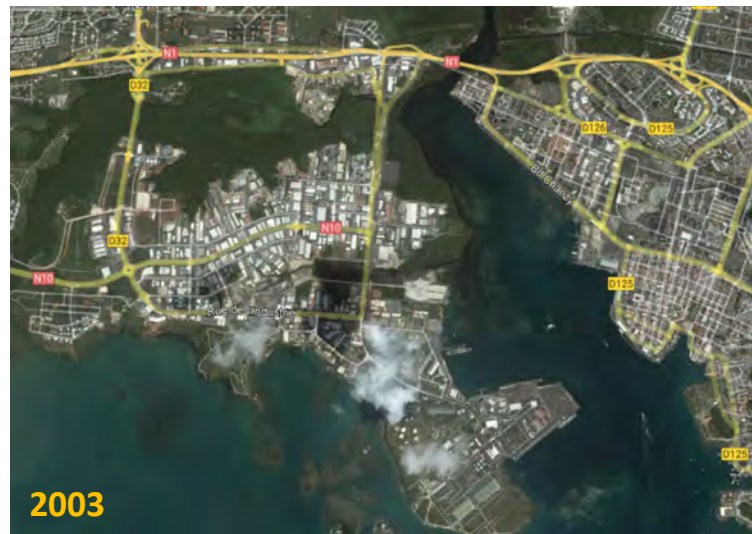


To be continued ...



« 2012-2022: ten years of OHM results" Session

Spatio-temporal changes



Central Jarry: A putative Global Ecology Study Site [SES-RS / SES-RU / SES-GS / SES-ECO / SES-I / SES-S]

- **Ecosystems:** mangroves and swamp forests
- **Biodiversity knowledges and pollution datas:** COMMANGA (OHM, APR-2020), JACOMO (OHM, APR-2022), Conservatoire du Littoral ...
- **Anthropic pressures:** historical and current industrial activities including the GPMP & power industries, main road traffics ...
- **Highly dynamic commercial area:** 9,211 private or public companies / 25,067 employees / 725 new business establishments in 2020
- **Ongoing ecological & restauration projects:** OFB, Office de l'eau de Guadeloupe, TotalEnergies Foundation, Région Guadeloupe, Conservatoire du Littoral
- **Two ZHE sites:** Pôle relais zone humide, IUCN, Collège Gourdeliane, Cap Excellence, Conservatoire du Littoral, Educ'OHM Mangrove (APR-2020), EVOLUM (APR-2022)



Analyzed sites by the Conservatoire du Littoral



Merci de votre attention

