



HAL
open science

Dynamics of ecosystem services and plant diversity over the past 200 years

Florence Mazier, Yael Schwertz, Stéphane Binet, Cédric Gaucherel, Didier Galop, François Gillet, Thomas Houet, Emilie Lerigoleur, Jérôme Molina, Clara Plancher, et al.

► To cite this version:

Florence Mazier, Yael Schwertz, Stéphane Binet, Cédric Gaucherel, Didier Galop, et al.. Dynamics of ecosystem services and plant diversity over the past 200 years. International Symposium of LabEx DRIIHM 2022, LabEx DRIIHM OHMi Nunavik CNRS-InEE, Jun 2022, Nantes, France. 10.34972/driihm-5c54de . hal-03789512

HAL Id: hal-03789512

<https://hal.science/hal-03789512>

Submitted on 27 Sep 2022

HAL is a multi-disciplinary open access archive for the deposit and dissemination of scientific research documents, whether they are published or not. The documents may come from teaching and research institutions in France or abroad, or from public or private research centers.

L'archive ouverte pluridisciplinaire **HAL**, est destinée au dépôt et à la diffusion de documents scientifiques de niveau recherche, publiés ou non, émanant des établissements d'enseignement et de recherche français ou étrangers, des laboratoires publics ou privés.

Dynamics of ecosystem services and plant diversity over the past 200 years

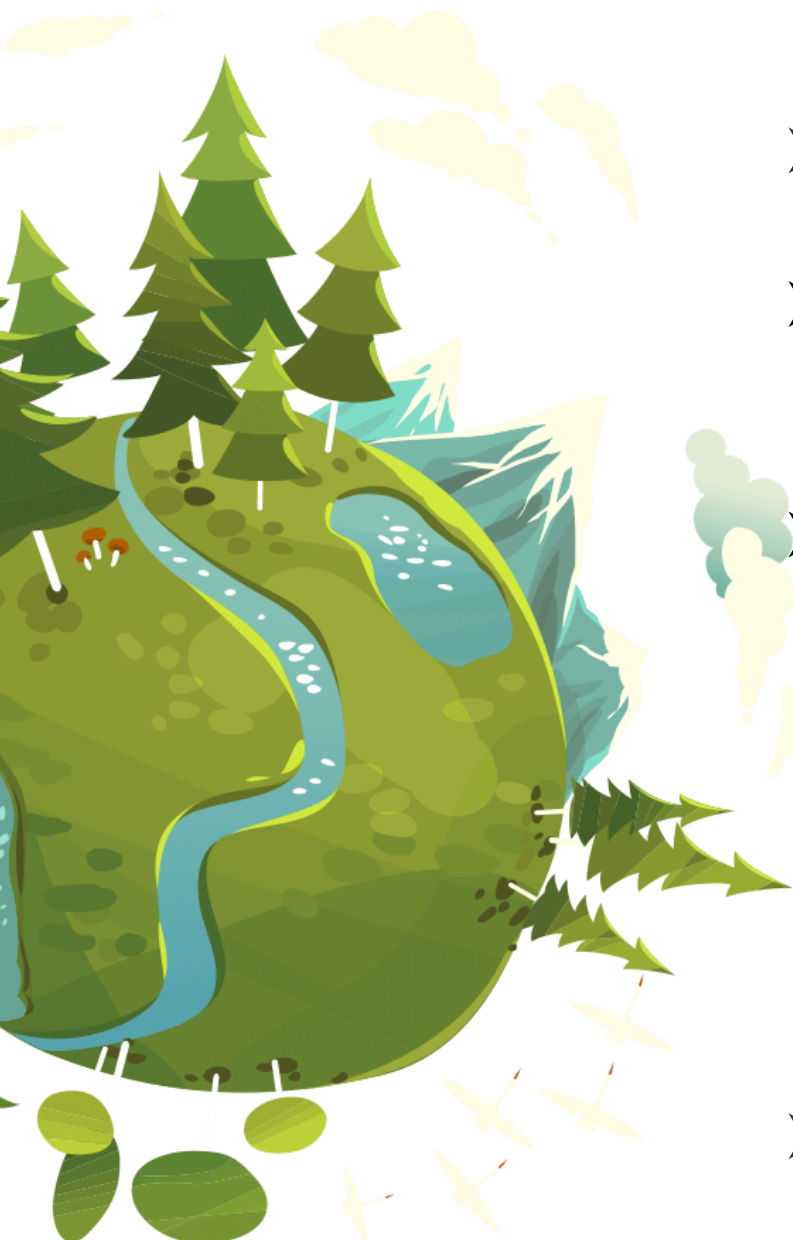
HERITSERV
SOPAST DYNAM
PASTSERV
GEOGRASP OPA
PALEOPAYS PAT

F. Mazier, Y. Schwertz, S. Binet, C. Gaucherel, D. Galop, F. Gillet, T. Houet, E. Lerigoleur, J. Molina, C. Plancher, M. Philippe, C. Sirami

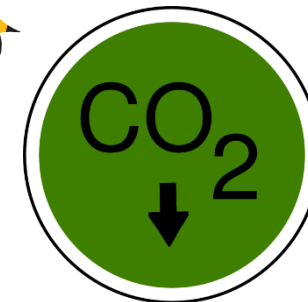


"2012-2022: ten years of OHM results" Session

Ecosystem Services (ES) _ Mountains



- 3% of Europe > 20 % of plant diversity
- topographical and geological complexity, climatic constraints, **historical trajectories** (current and past land-cover change)
- numerous ecological functions > production of ecosystem services (ES)
[Martin-Lopez et al. 2019.](#)

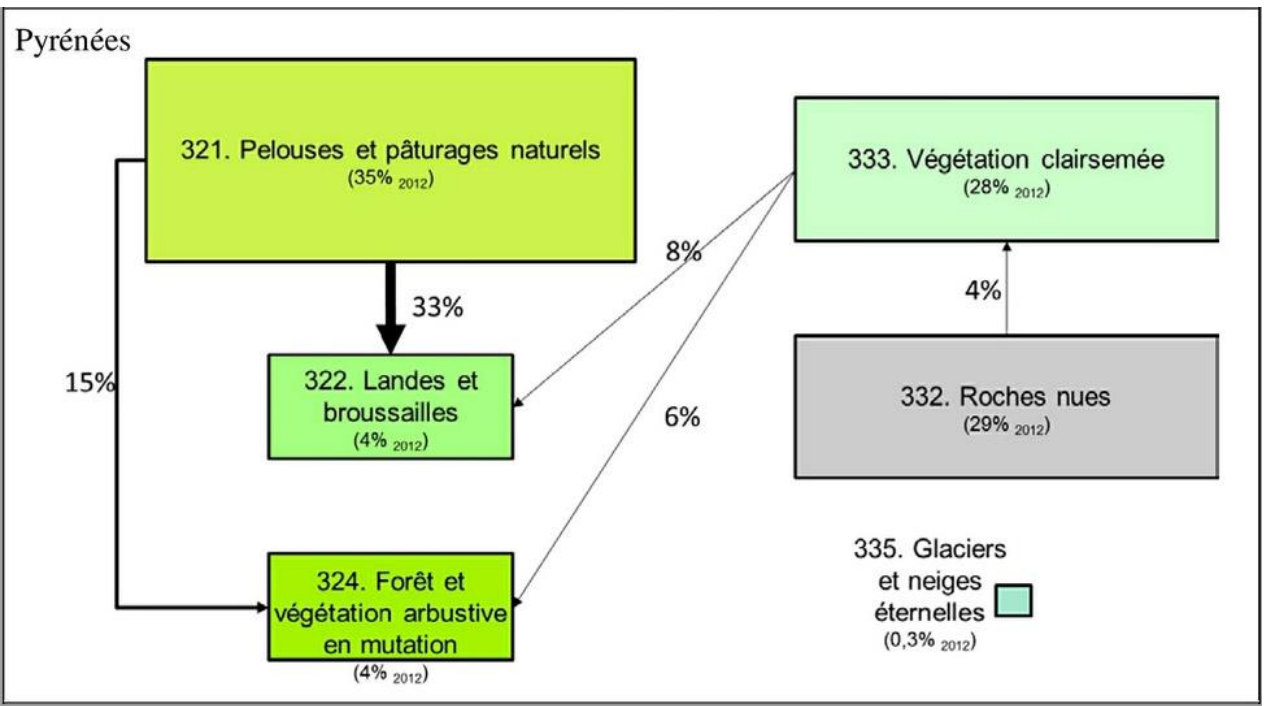


- **ES** threatened by changes in **land use**
[Grêt-Regamey et al. 2014, Lavorel et al. 2017](#)

Past land-cover change 1990_2012 (Corine Land Cover)

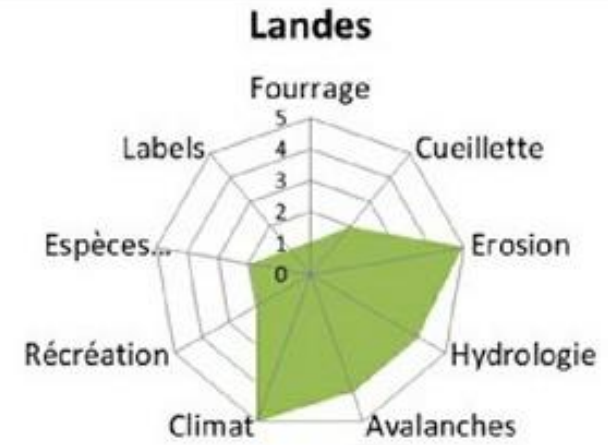
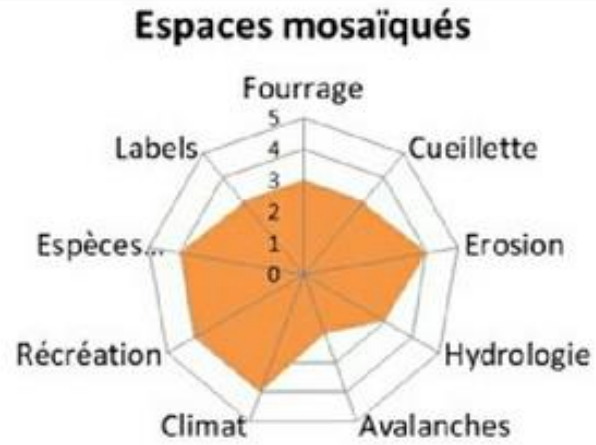
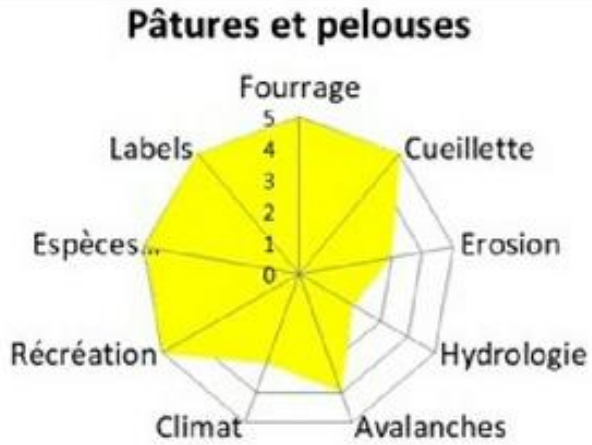


Rapport EFESE, 2018



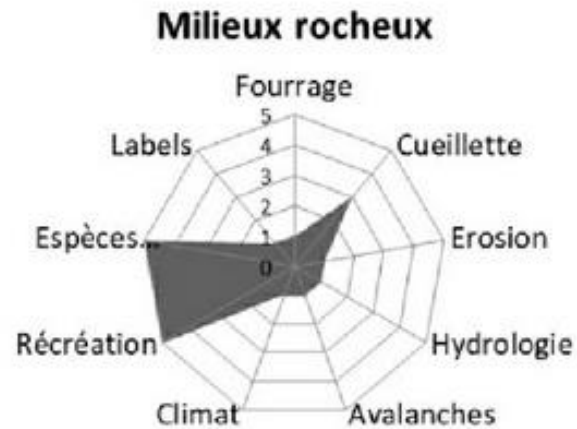
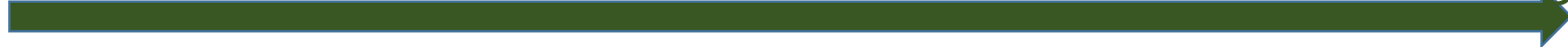
Catégorie	Variable	Fourniture par type de milieu d'altitude					Tendance d'évolution	Degré de confiance
		Pelouses et pâturages naturels	Landes et formations buissonnantes	Formations arborées très peudenses	Végétation clairsemée et roches	Milieux humides		
Biens produits	Production de fourrage	***	*	**	*	**	↘	***
	Cueillette de plantes sauvages	**	**	*	**	*	↘	*
Services de régulation	Régulation du climat global – Stocks de carbone	***	**	**	*	***	↗	**
	Contribution des écosystèmes à la régulation hydrologique	*	**	*	*	***	→	*
	Contribution des écosystèmes au contrôle de l'érosion des sols	**	**	**	*	**	↗	***
	Rôle des écosystèmes dans la protection contre les risques naturels	**	**	**	*	*	↗	**
Services culturels et récréatifs	Attractivité des écosystèmes pour les activités sportives de pleine nature	***	**	*	***	**	↗	***
	Aménités paysagères	***					↘	***
	Chasse récréative	**	*	**	*	*	↘	*
	Soutien aux activités de recherches scientifiques							
Patrimoine naturel	Espèces patrimoniales	***	*	**	***	**	↘	***
	Paysages patrimoniaux	***					↘	***
	Labels de reconnaissance patrimoniale							
	Inspiration pour l'art et la littérature							

Impact of land-cover change on ES bundles in Mountain areas



Production SE

Regulation ES



Contribution of PASTSERV/SOPAST to ES studies

-> Longer time scale (200 years, periodicity 20-10 years, 13 TW)

≠ Short-term studies, insufficient hindsight to understand i) slow socio-ecological dynamics (forest regrowth) and/or ii) response of ecological systems to environmental perturbation (human activities) *Jeffers et al. 2015*

-> Fine spatial scale _ temporal dynamics of ES production will integrate landscape composition AND heterogeneity

≠ very limited empirical evidence for historical trajectories of multiple ES and their relationships with trajectories of land use. Rare studies explored their relationships with landscape heterogeneity *Lavorel et al. 2017, Mengist et al. 2020*

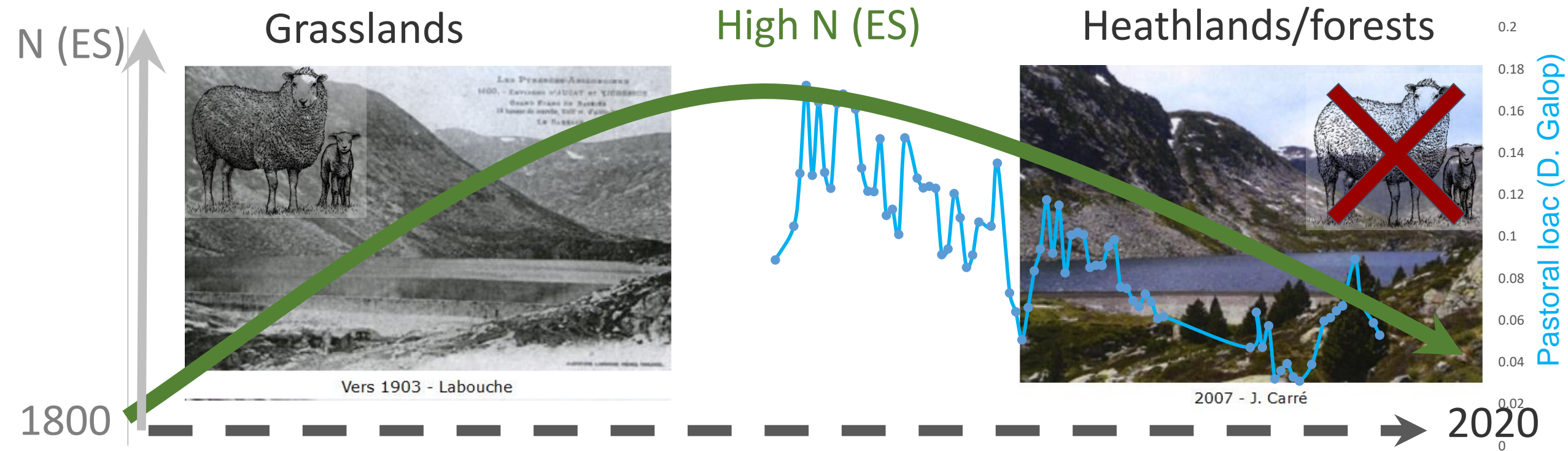
-> Not limited to "open" land and redefining ES

- Mapping distributions of species and land-cover type (finer-grained maps and description)
- Biogeochemical and hydrological cycles in high mountains_ a priority, effect of land-cover.

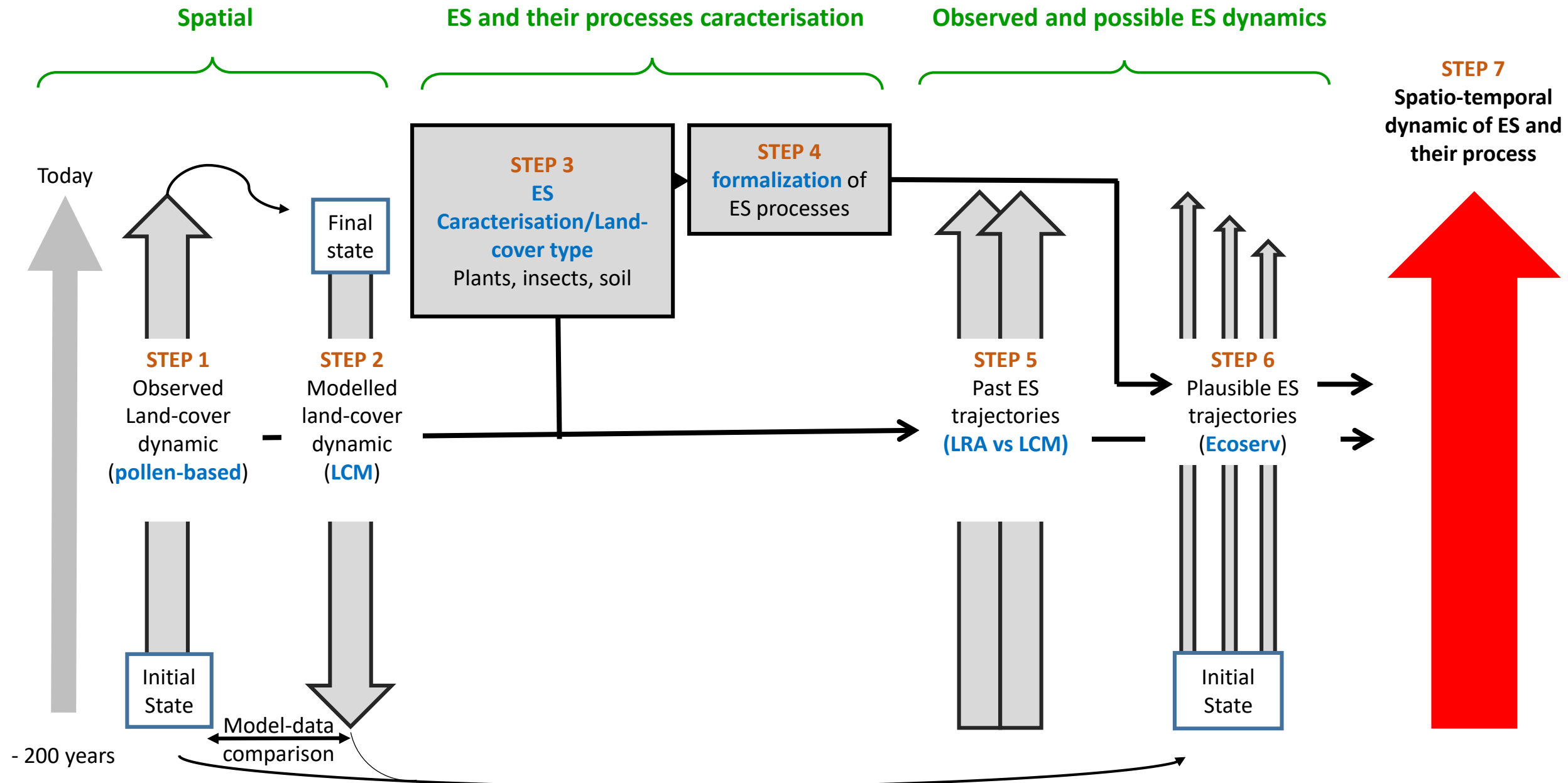
EFESE, 2018

OHM Projects _ Impact of past pastoral activities on

- Landscape composition and heterogeneity
- Dynamic of ES bundles, ES sustainability, synergies, interactions and time lags
- Land-use legacy effects on plant diversity

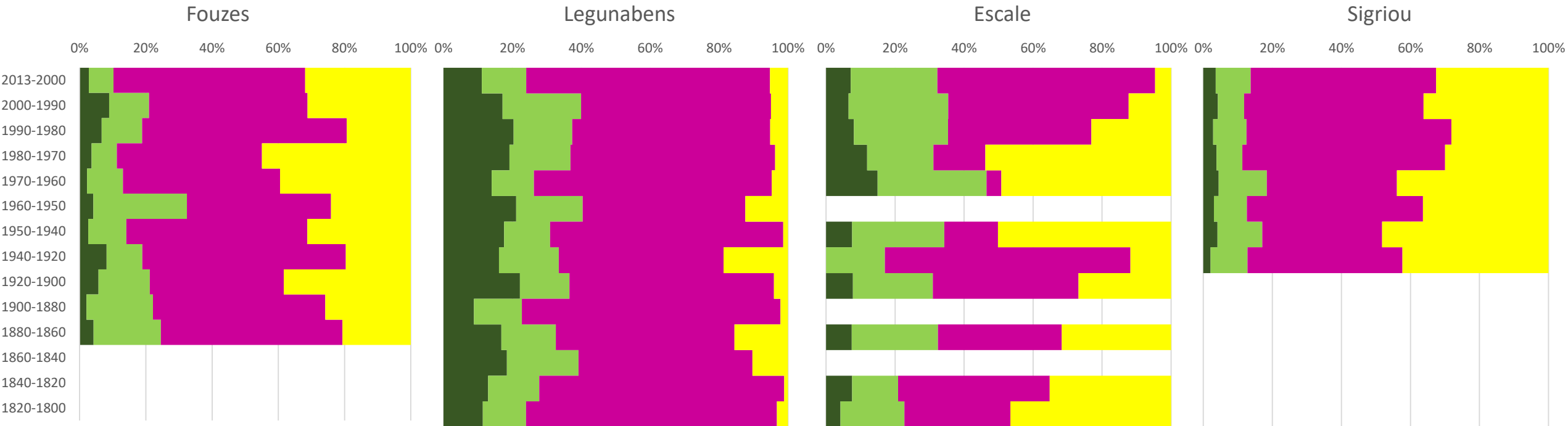


PASTSERV and SOPAST FLOWCHART



Pollen-based past land-cover change_200 years

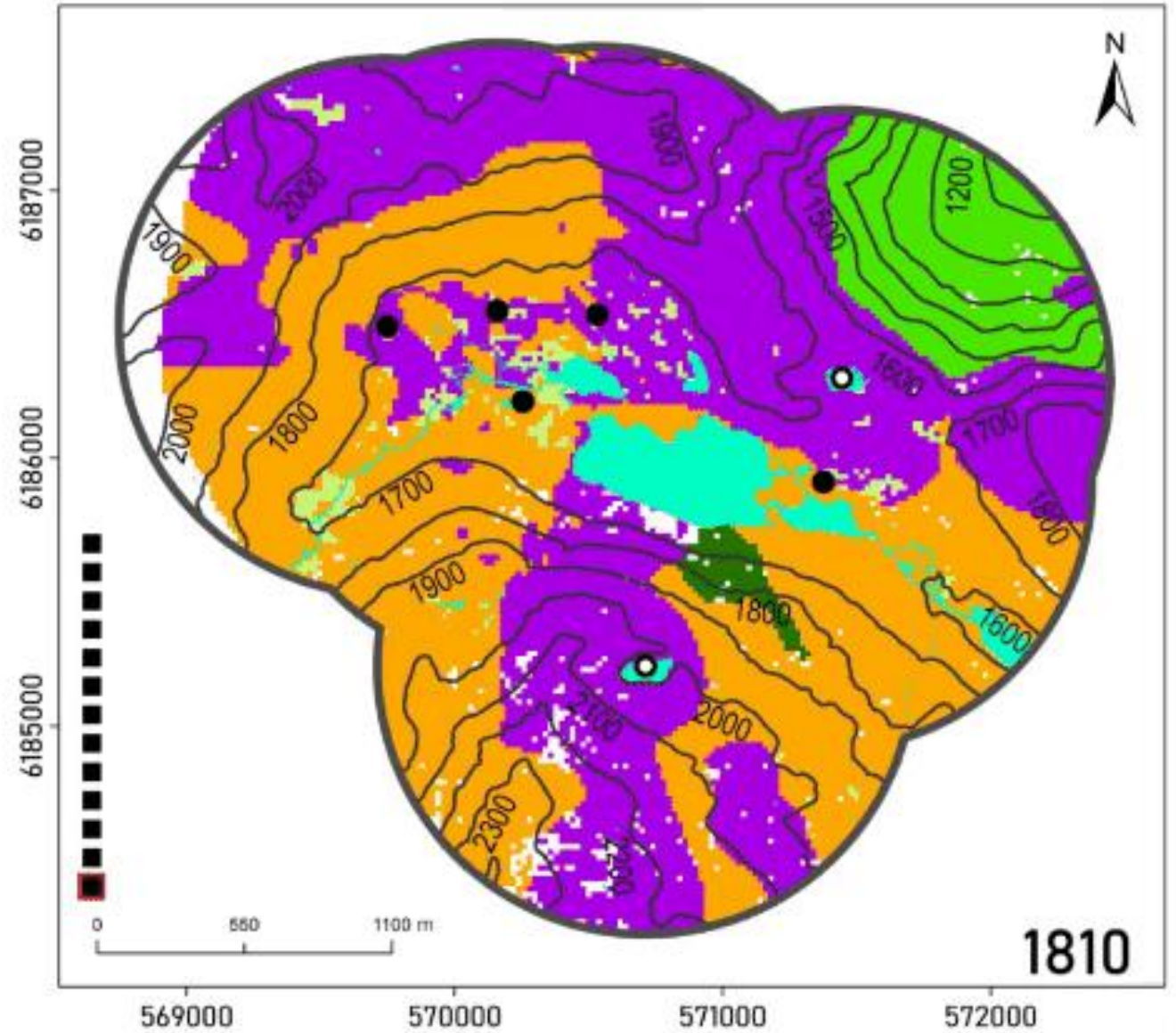
PhD thesis C. Plancher



Site ARBU Allen et al. 2020. CATENA
Plancher et al. Sub QSR

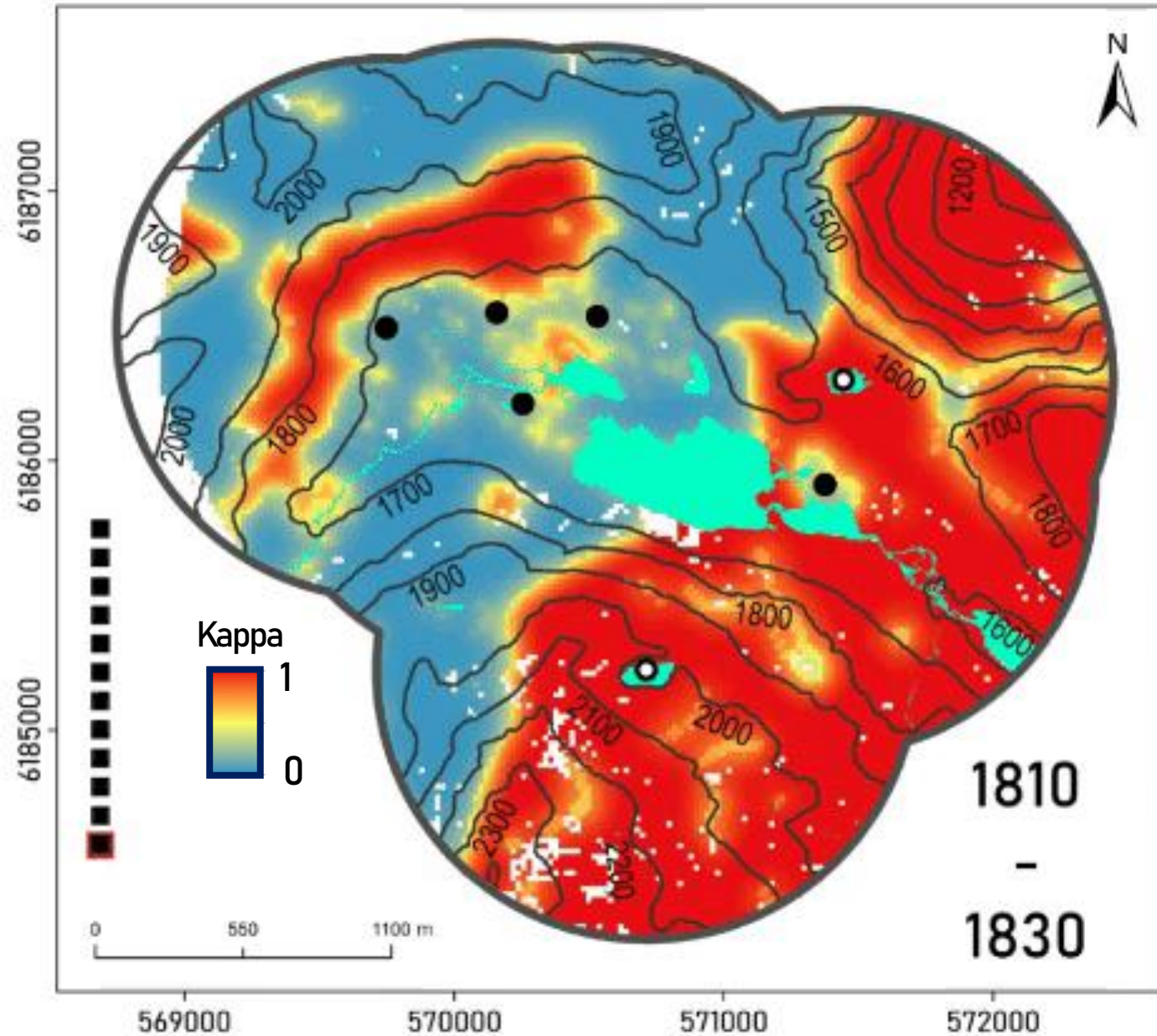


Atlas of past land-cover change_ 200 years



- Other grassland (OG)
- Festuca grassland (FG)
- Rhododendron heathland (RH)
- Mixed heathland (MH)
- Calluna heathland (CH)
- Mixed forest (MF)
- Broadleaved (BF)
- Conifers (C)

Maps of Land-cover differences



Rates of past land-cover change

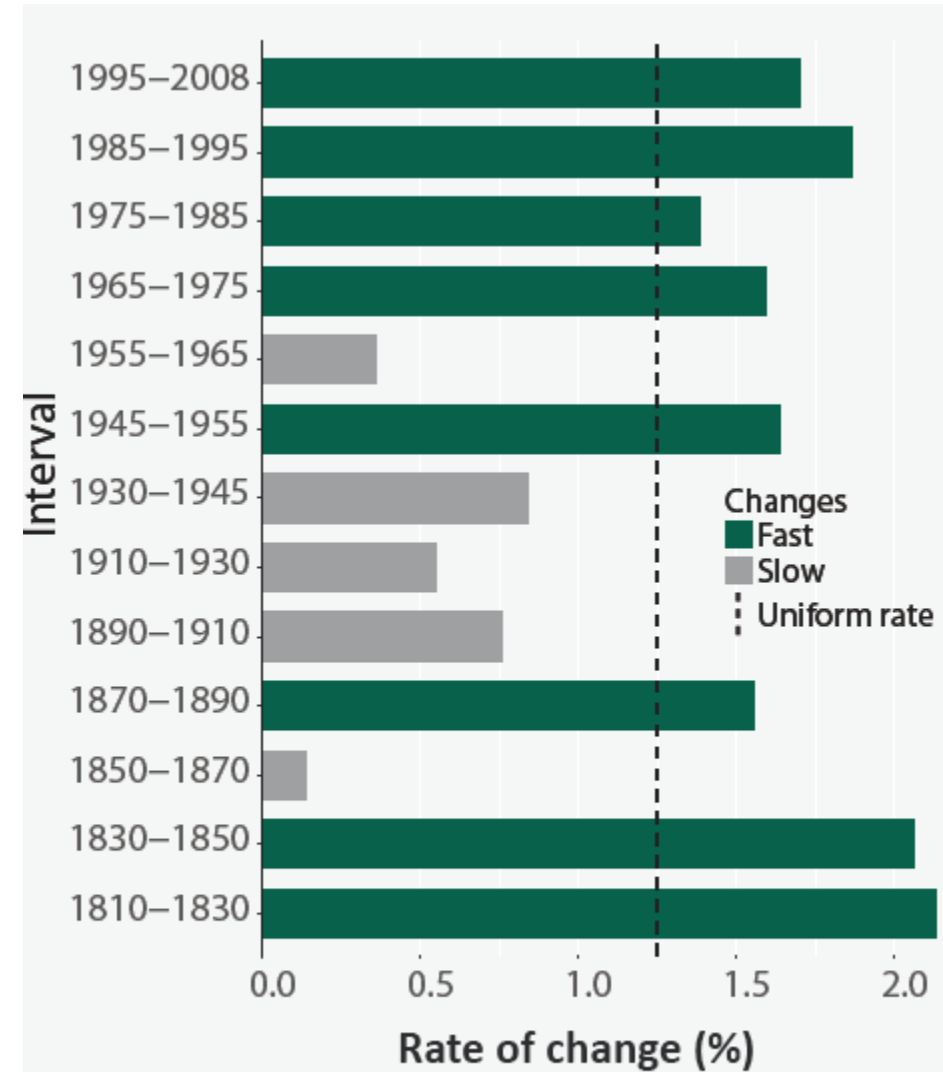
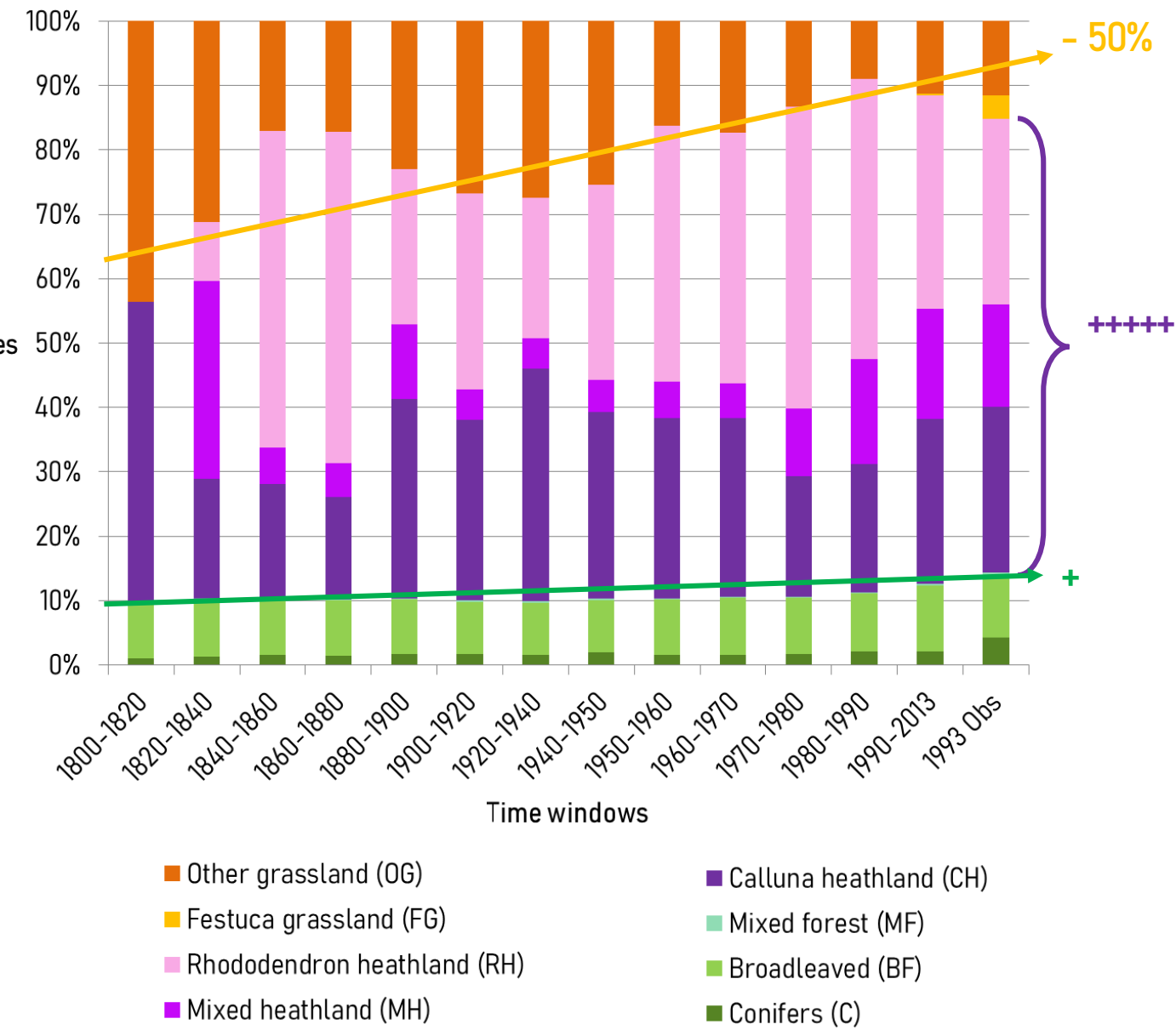
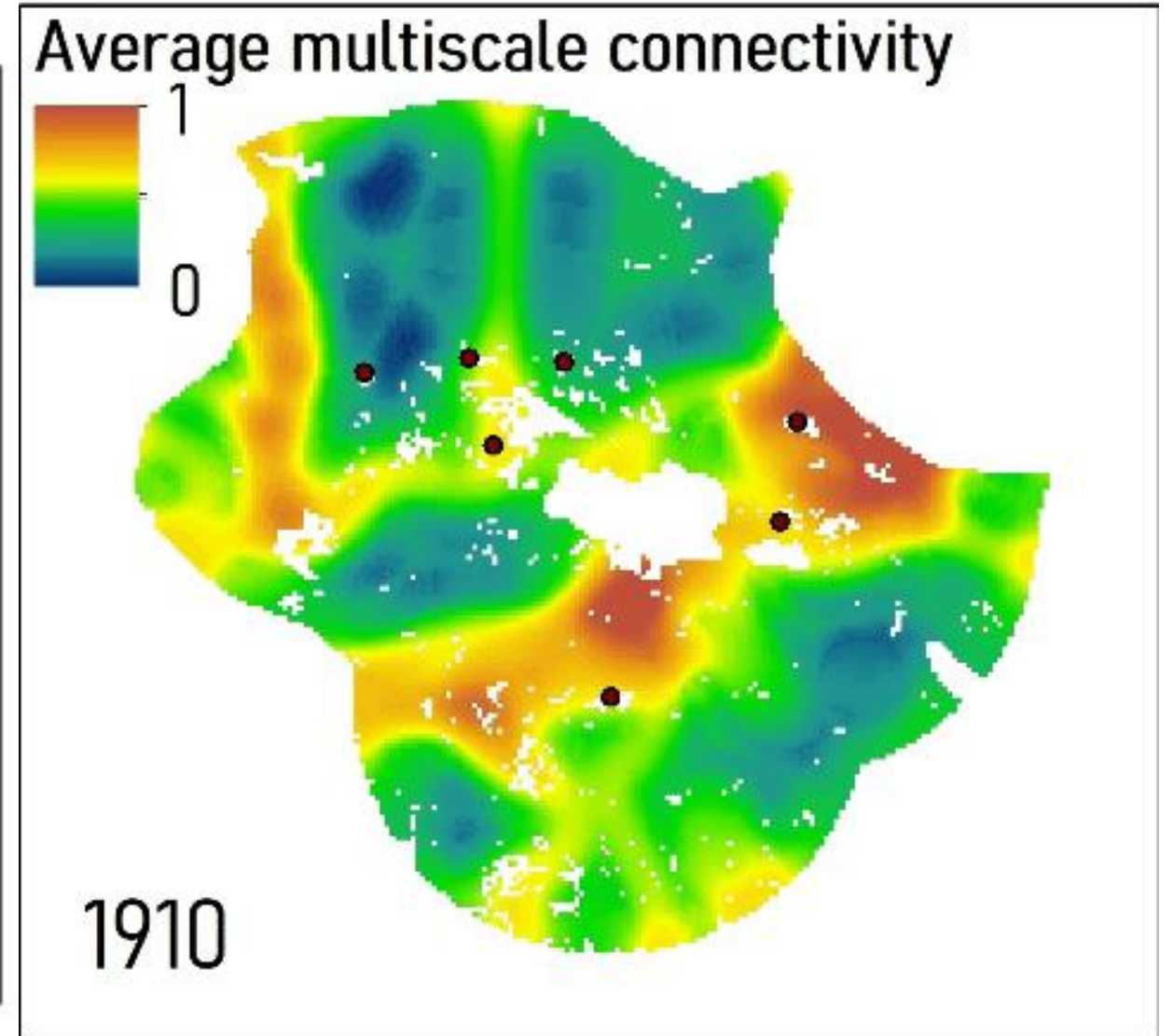
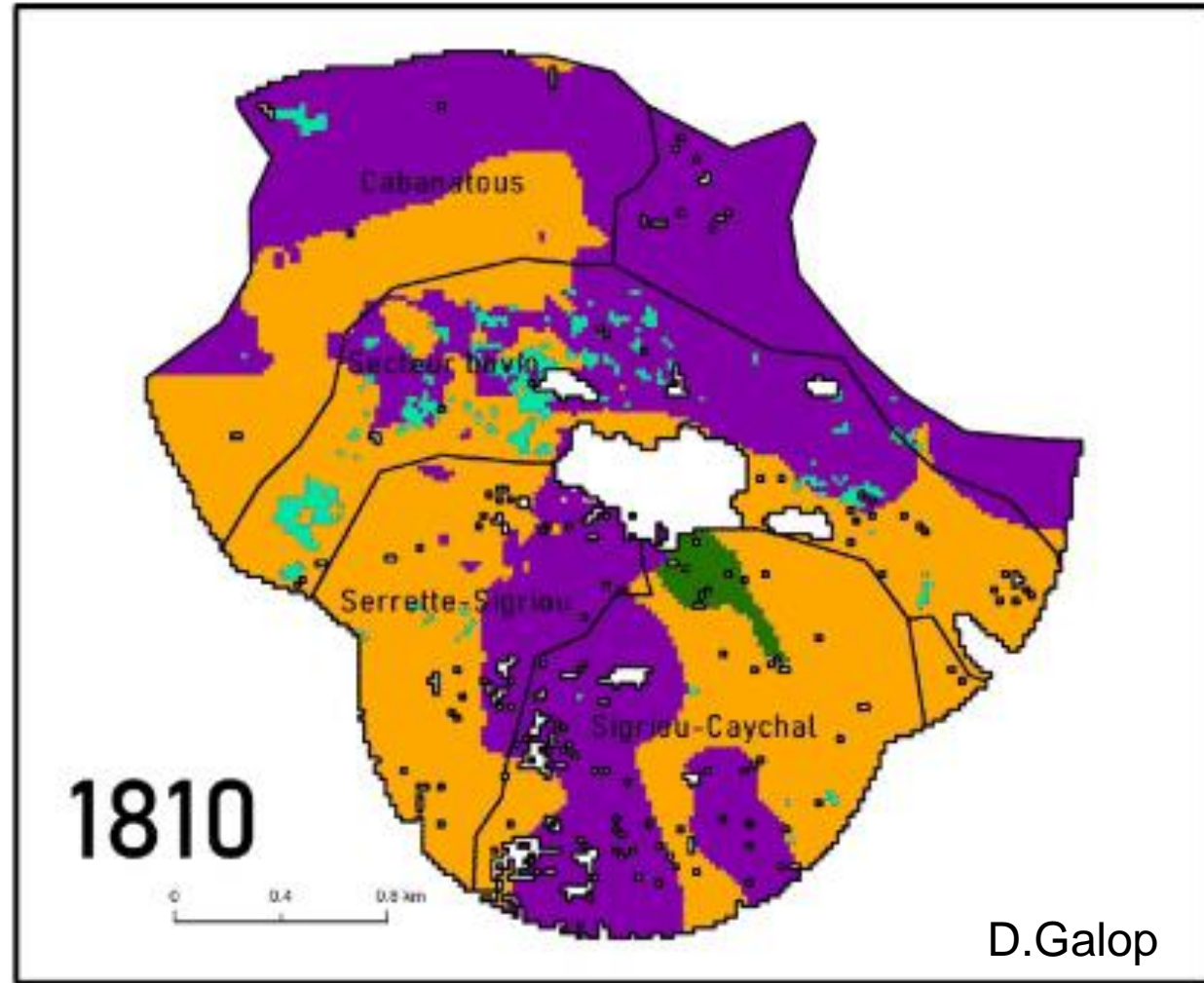
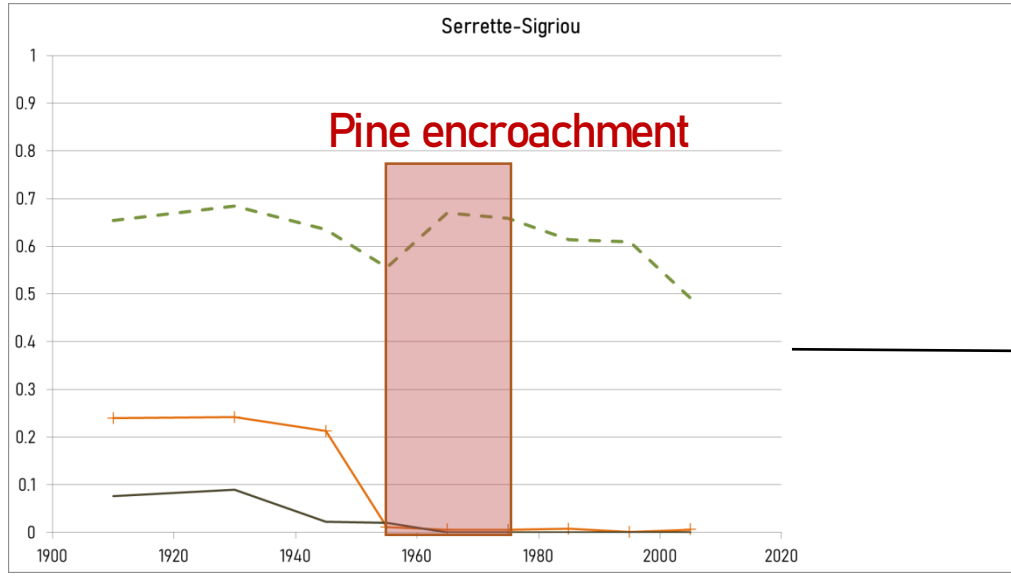
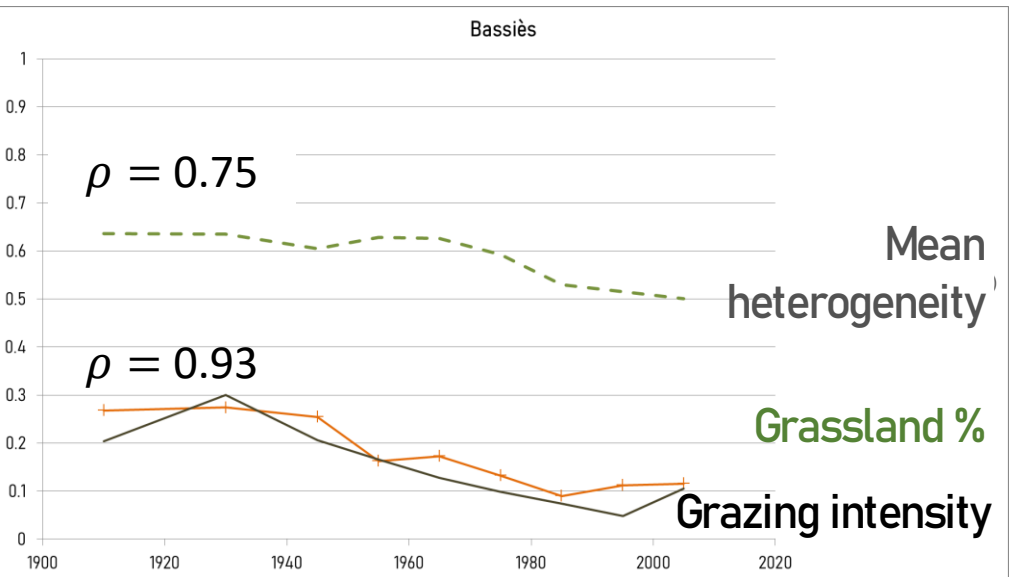


Figure 4 : Rates of land-cover changes between time windows midpoint

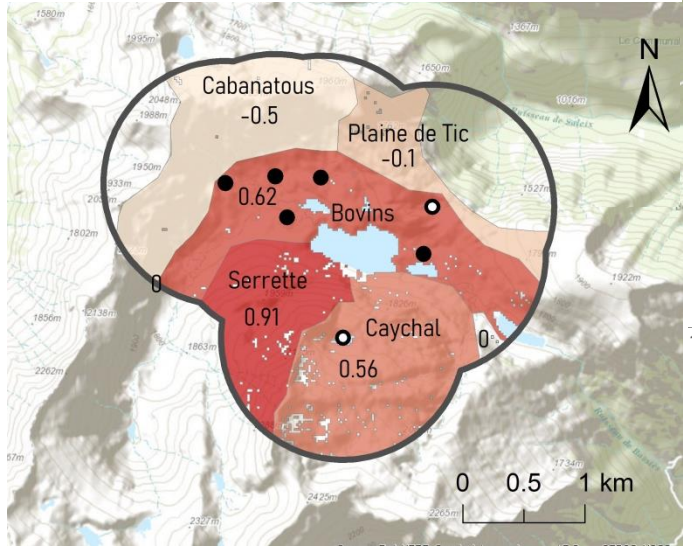
Impact of pastoral abandonment on landscape composition and herogeneity



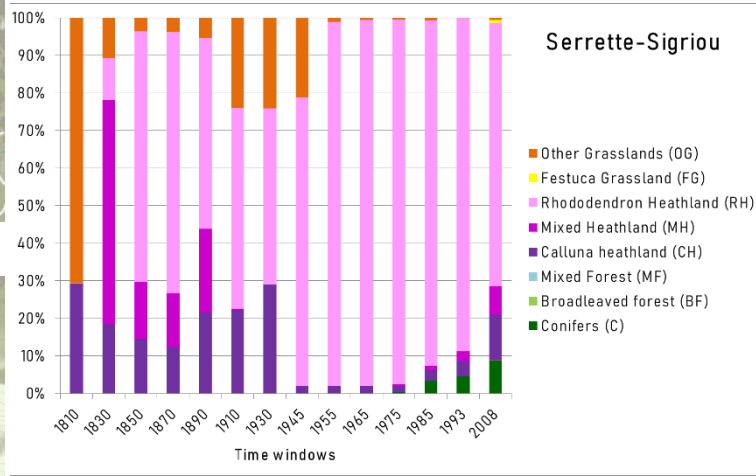
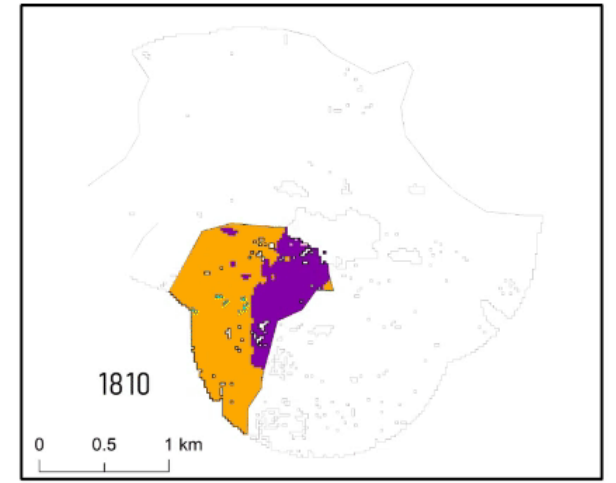
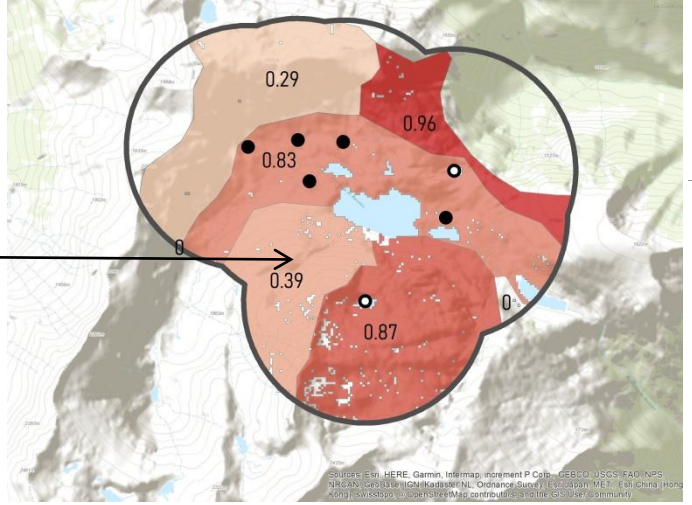
Impact of pastoral abandonment on landscape composition and heterogeneity



Grassland % and grazing activity



Heterogeneity and grazing activity

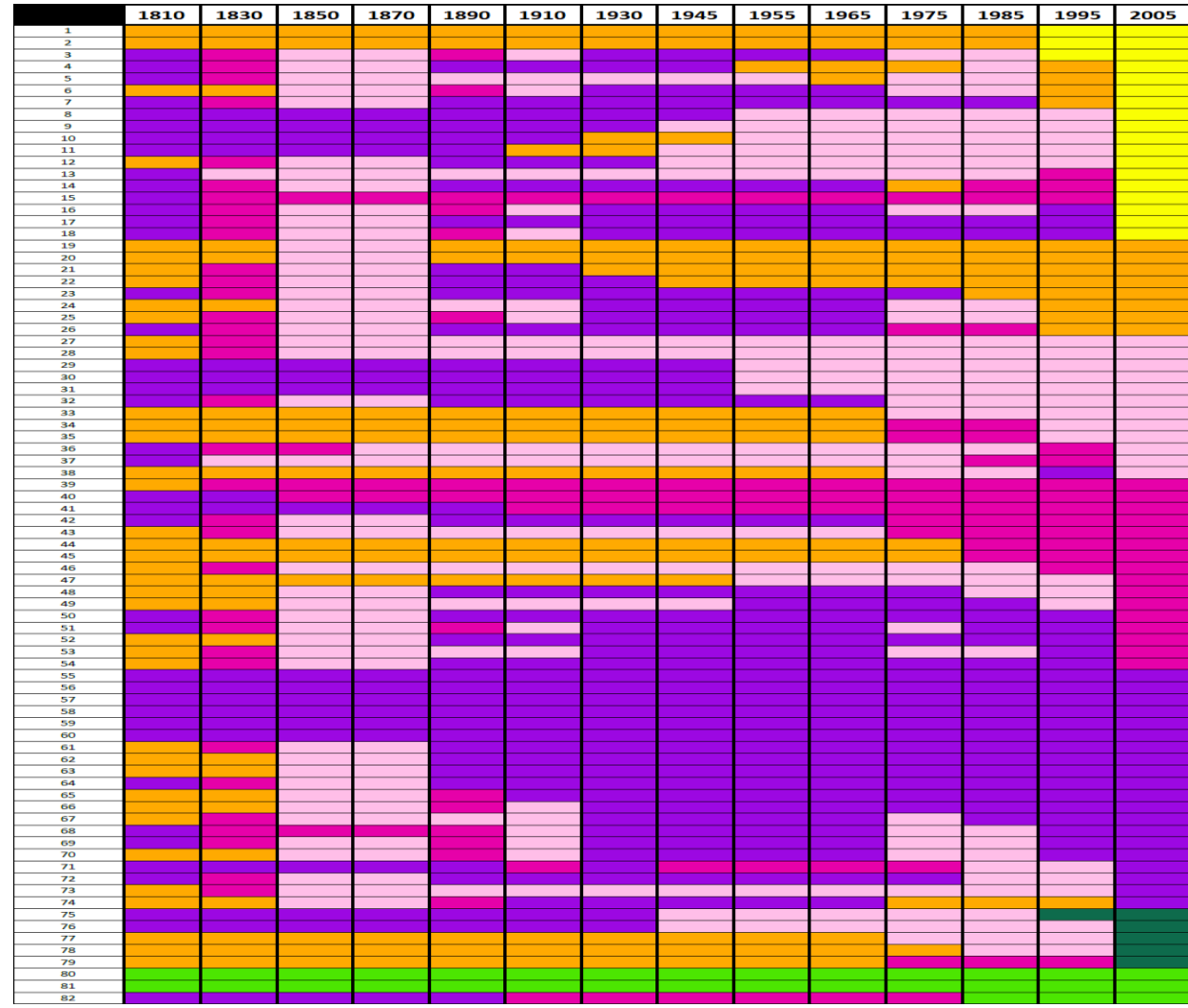
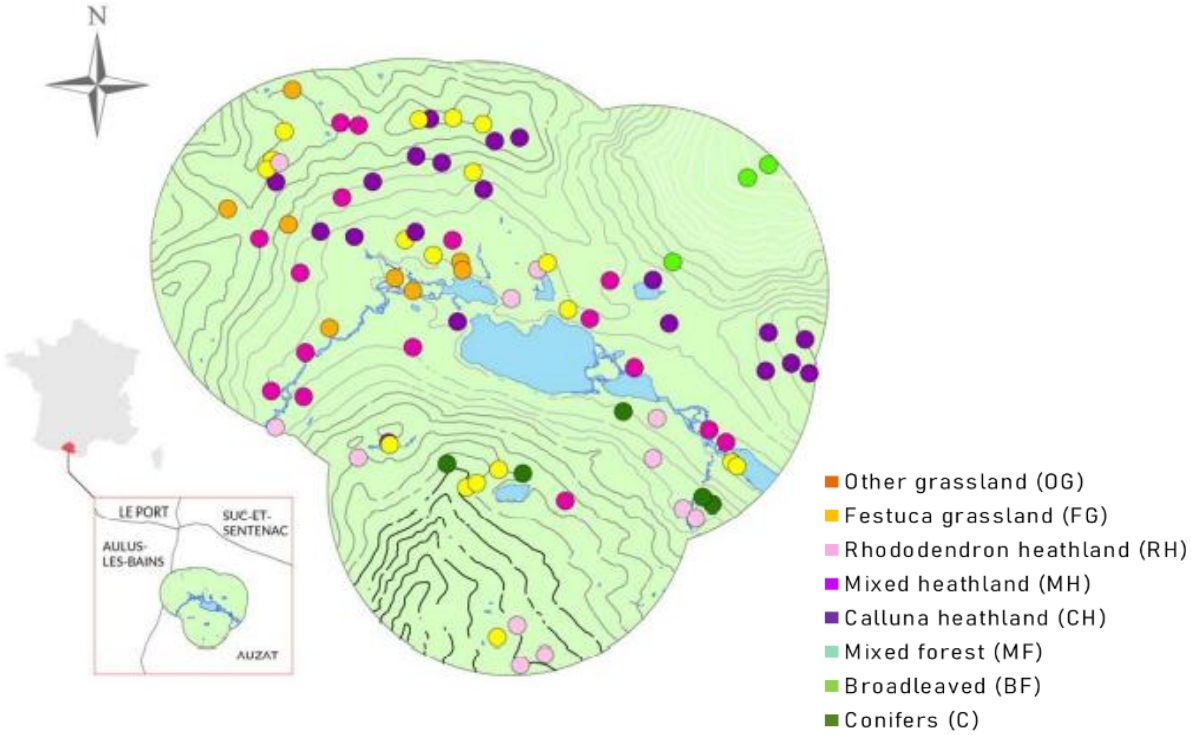


C. Plancher

Mattias Burgi

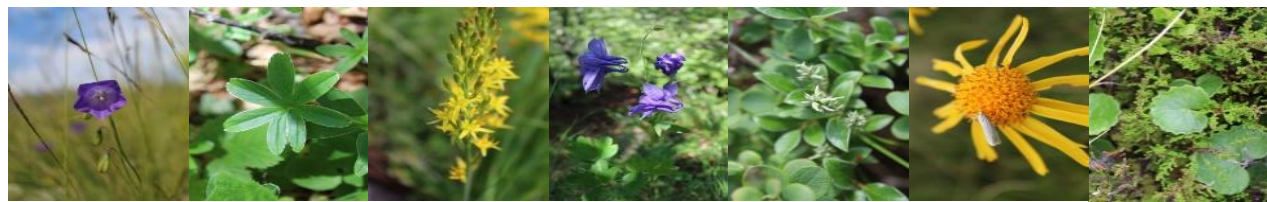
Land-cover legacy effects on plant taxonomic and functional diversity

M2 Hugo Belly, 2021



- ❖ 82 sites (2015 et 2020, Haunold, 2015 & Plancher et al. sub)
- ❖ 8 Land-cover types
- ❖ Percentage cover of 187 species

FAIR DATA SO-DRIIHM

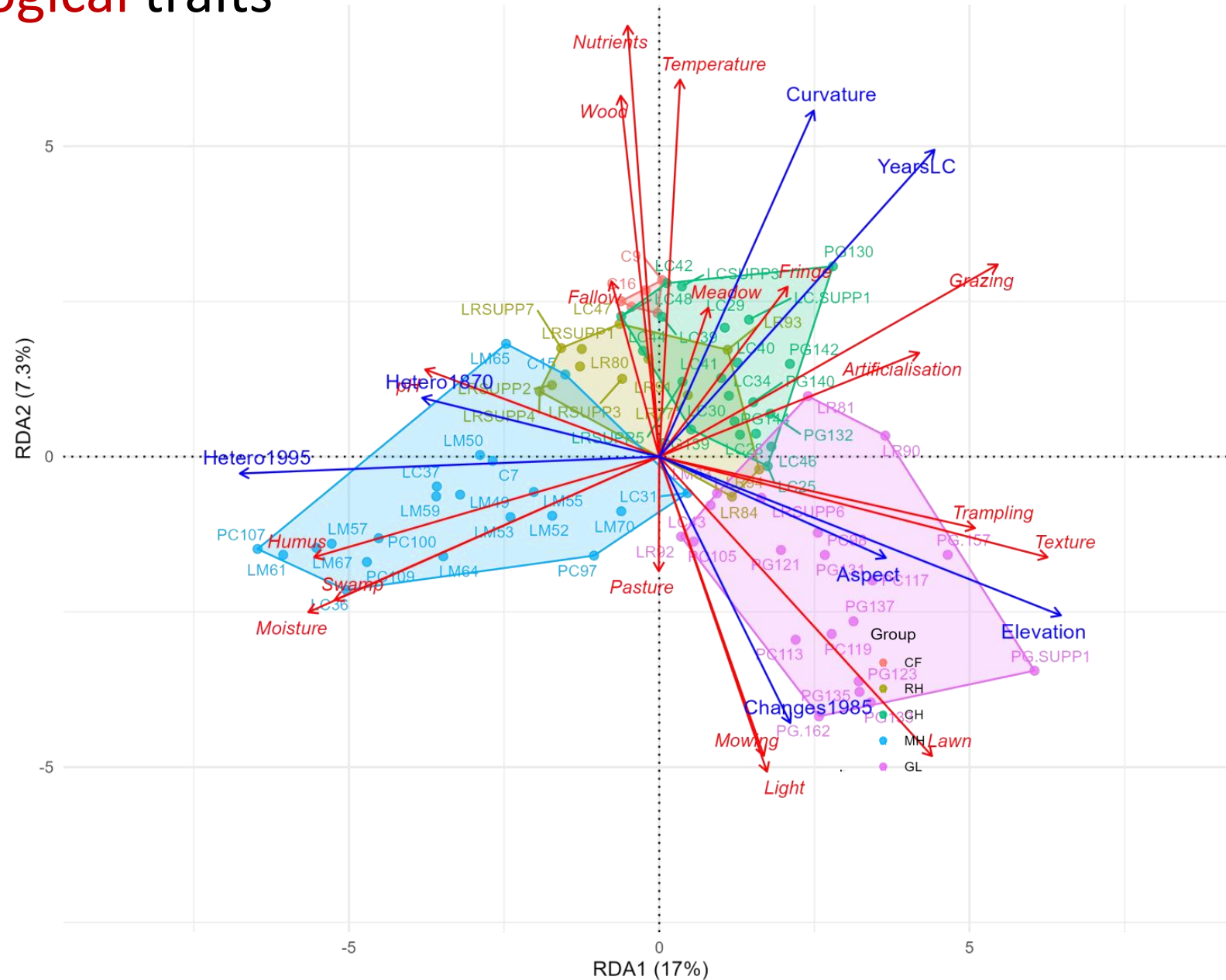


RDA on scaled CWMs of ecological traits

forward selection of explanatory variables

6 explanatory variables selected:

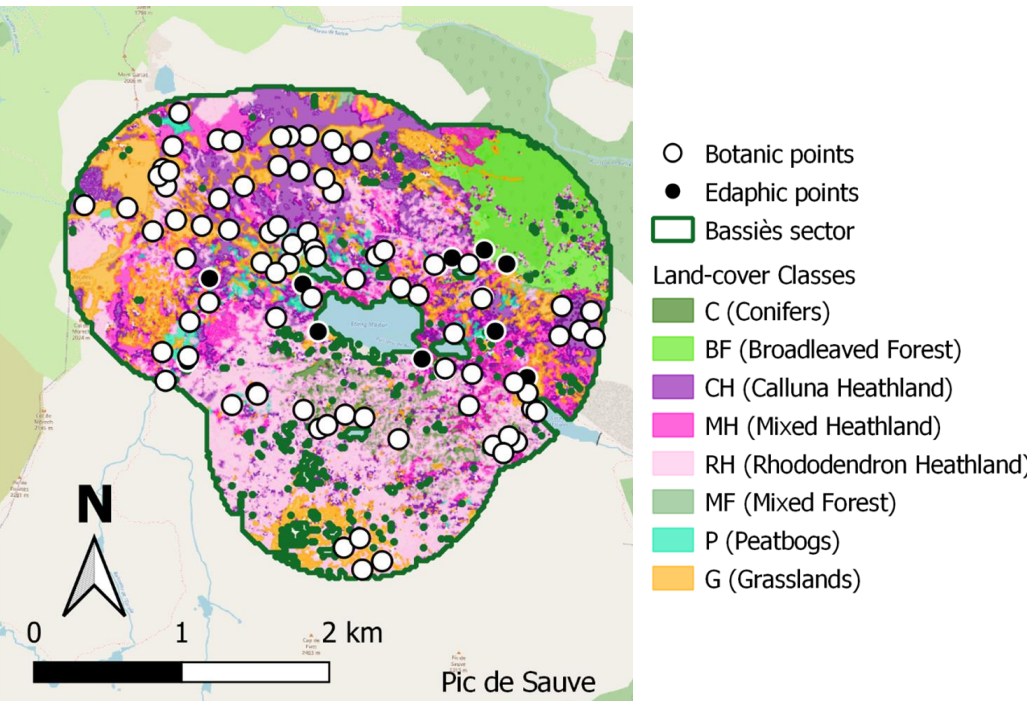
- Curvature
- Elevation
- North aspect
- Average spatial heterogeneity in 1870
- Total past duration of current land-cover



$R^2 = 0.276333$
 $adjR^2 = 0.2160274$

Selection of ES proxies relevant in mountains

M2 Yaël Schwertz, 2022, Dir C. Sirami & F. Mazier
Schwertz et al. 2022, hal-03754602



Production	Pastoral value	Total cover of plants with pastoral value (%)
	Plant picking	Abundance of picked plants (%)
Cultural	Patrimonial value	Abundance of patrimonial plants (%)
	Flowers Aesthetics	Total cover of forbs flowers (%)
	Butterflies Aesthetics	Abundance of butterflies (occurrence)
Regulation (pollination)	Pollination	Abundance of entomogamous plants (%)
Regulation (Carbon Cycle)	Organic C fixation	Labile organic matter stabilizing factor
	Organic C stock	SOC* (kgC/m ²)
	Inorganic C fixation	Capture CO ² (g/m ² /year)
Regulation (Water cycle)	Water retention	Useful Water Supply (mm)
	Water infiltration	Water flux (L/m ² /year)
Regulation (Environnement quality)	Organic matter recycling	Biodegradation rate (g/day)
	Nutrient supply	Cation Exchange Capacity (cmol/kg)
	Biological activity	microbial biomass (µg/g)

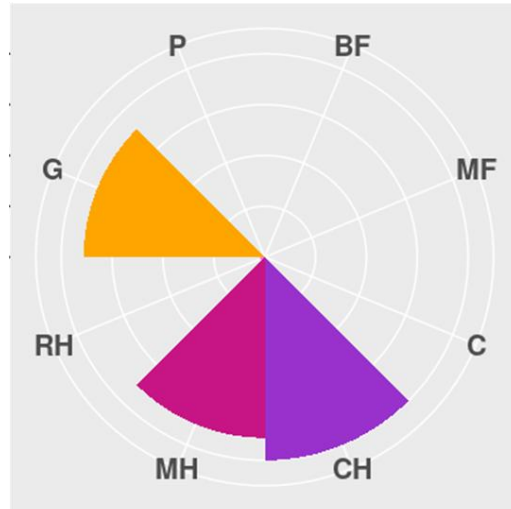


ES bundles are land-cover type dependant

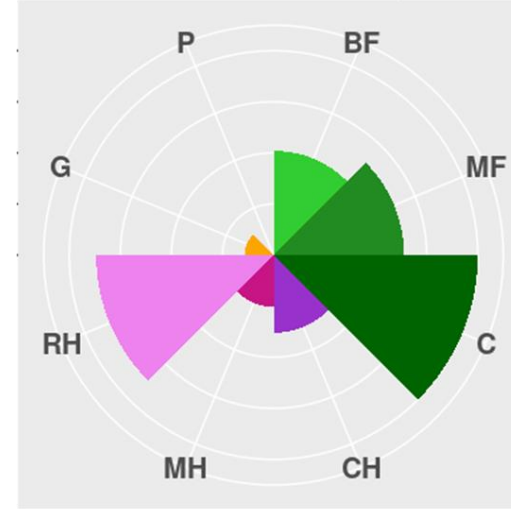
Pastoral value



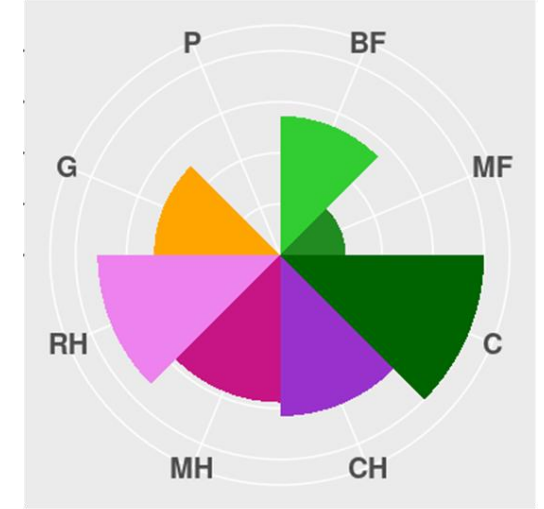
Patrimonial value



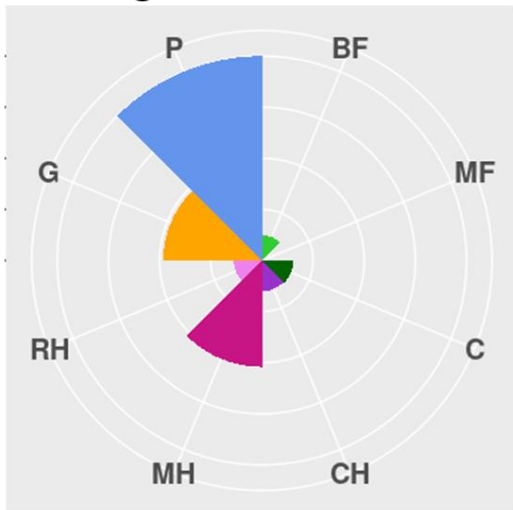
Plant-picking



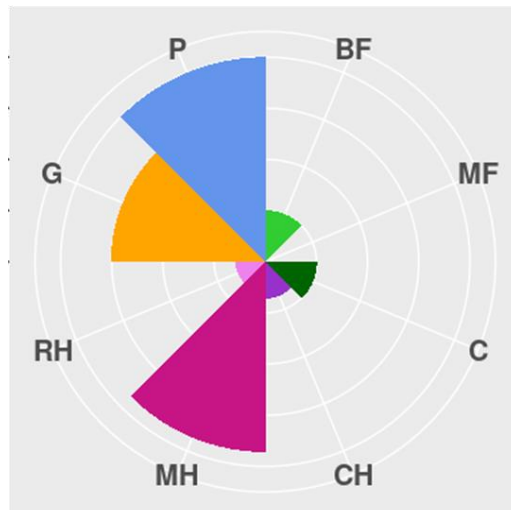
Flowers Aesthetic



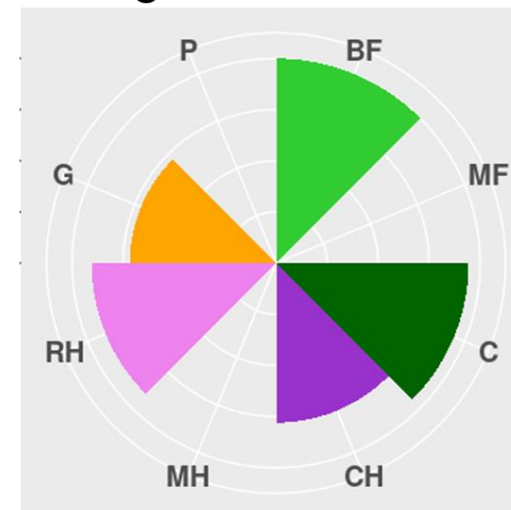
Inorganic C fixation



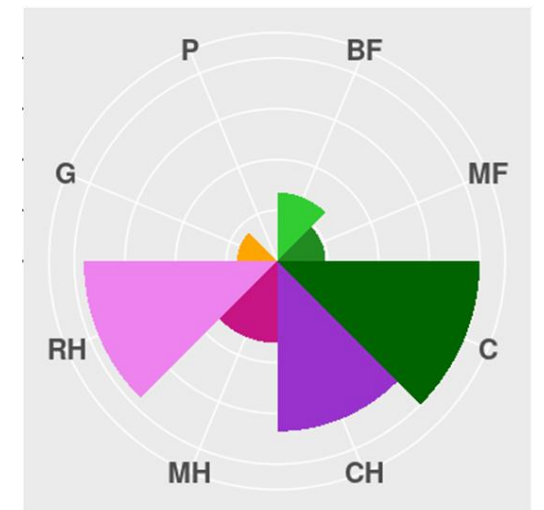
Water Infiltration



Organic C fixation

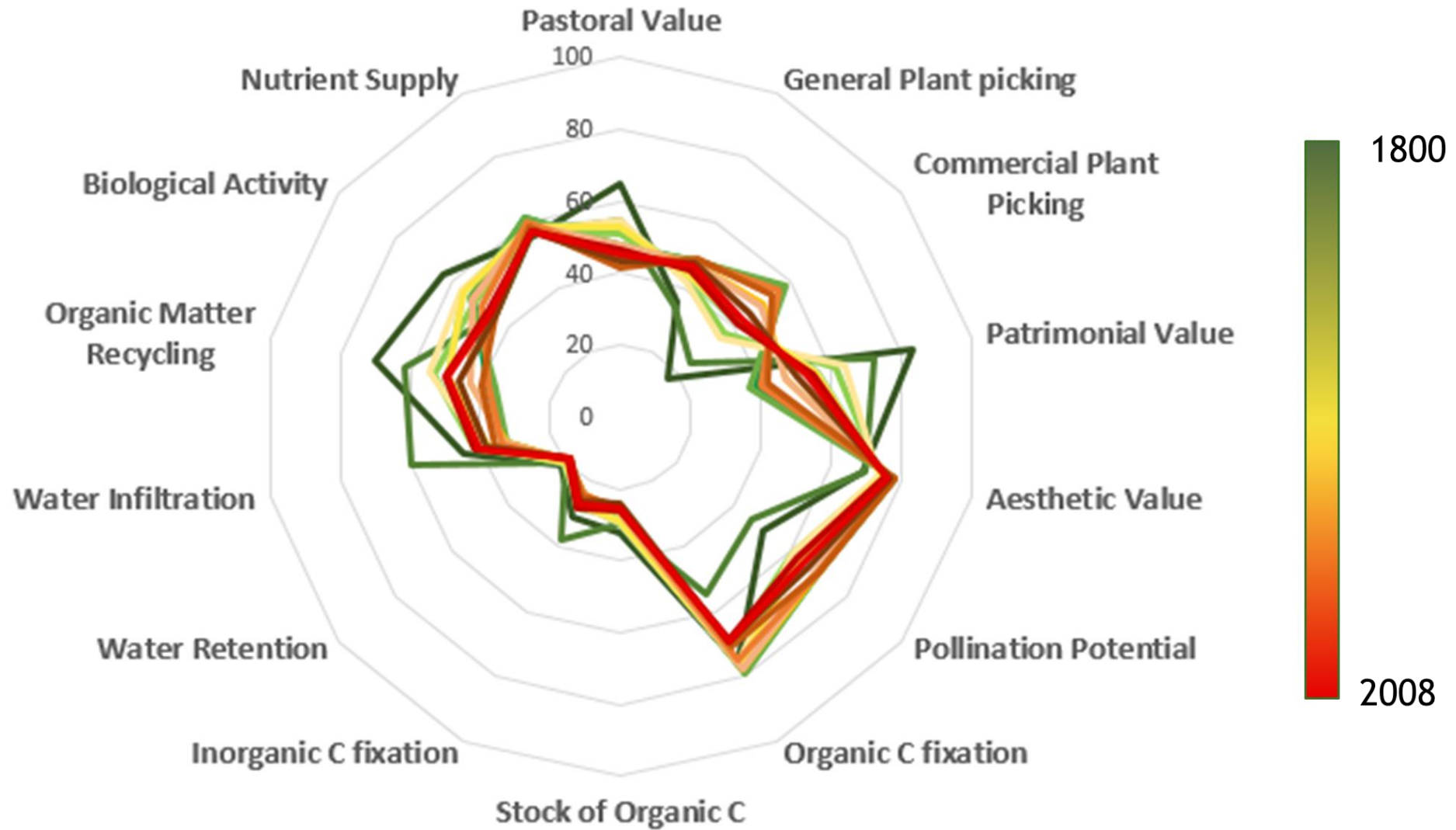


Pollination Potential



See POSTER OHM HV

Temporal variability of ES production level

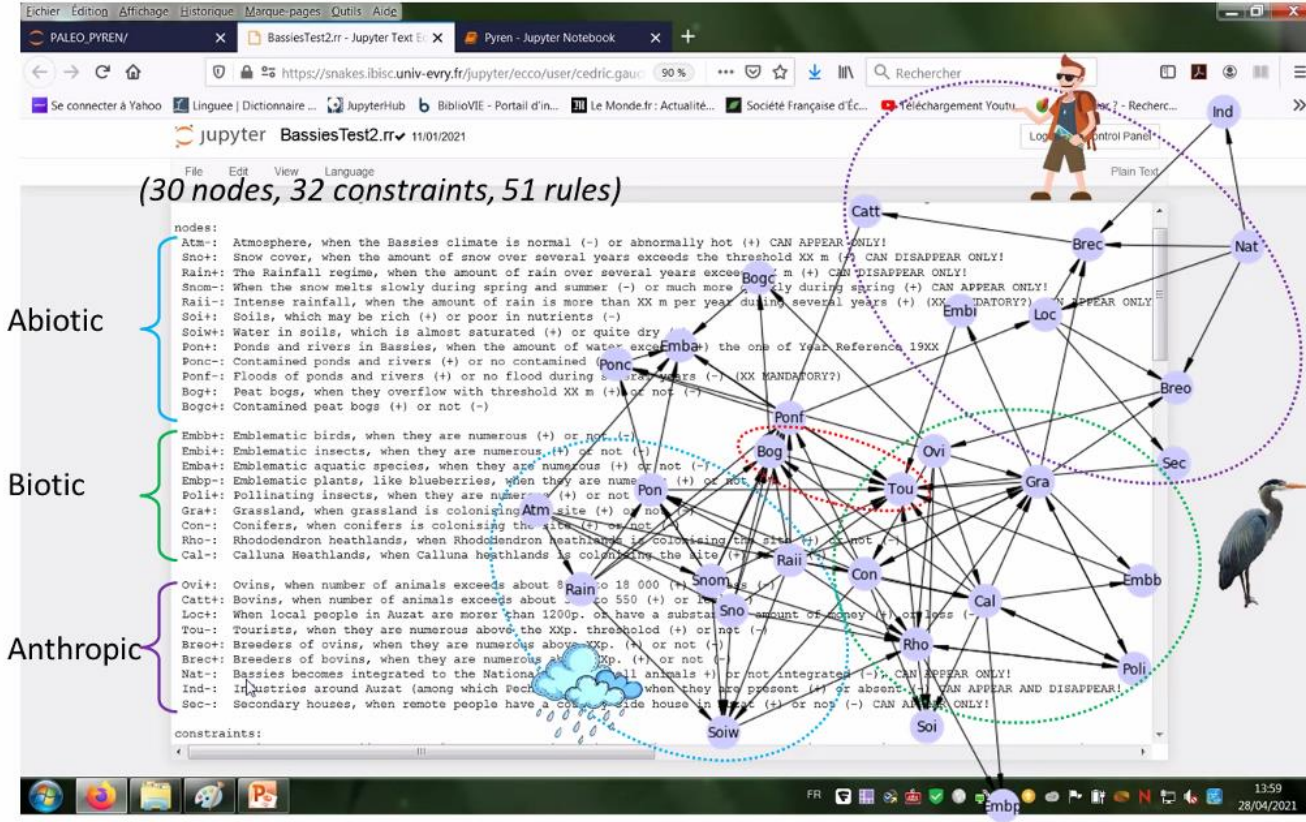


See POSTER OHM HV

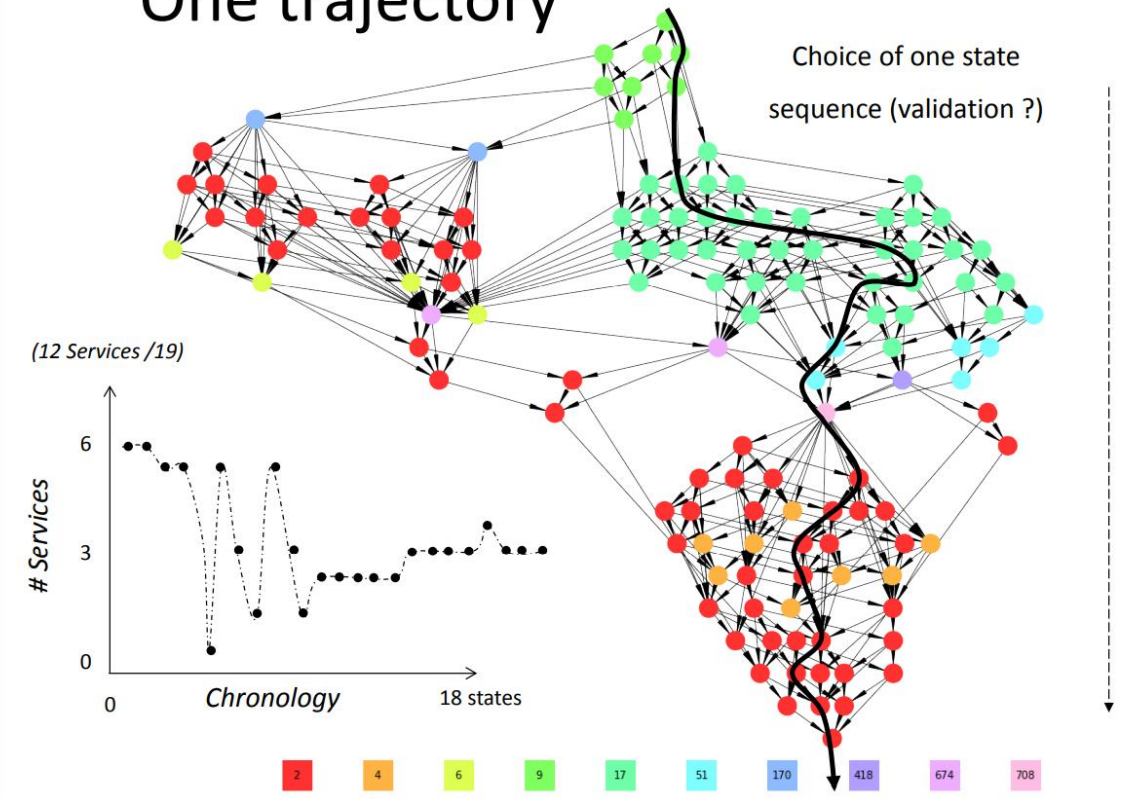
Socio-ecosystem of Bassiès

Bassiès version 2.0

Ecosystem Network



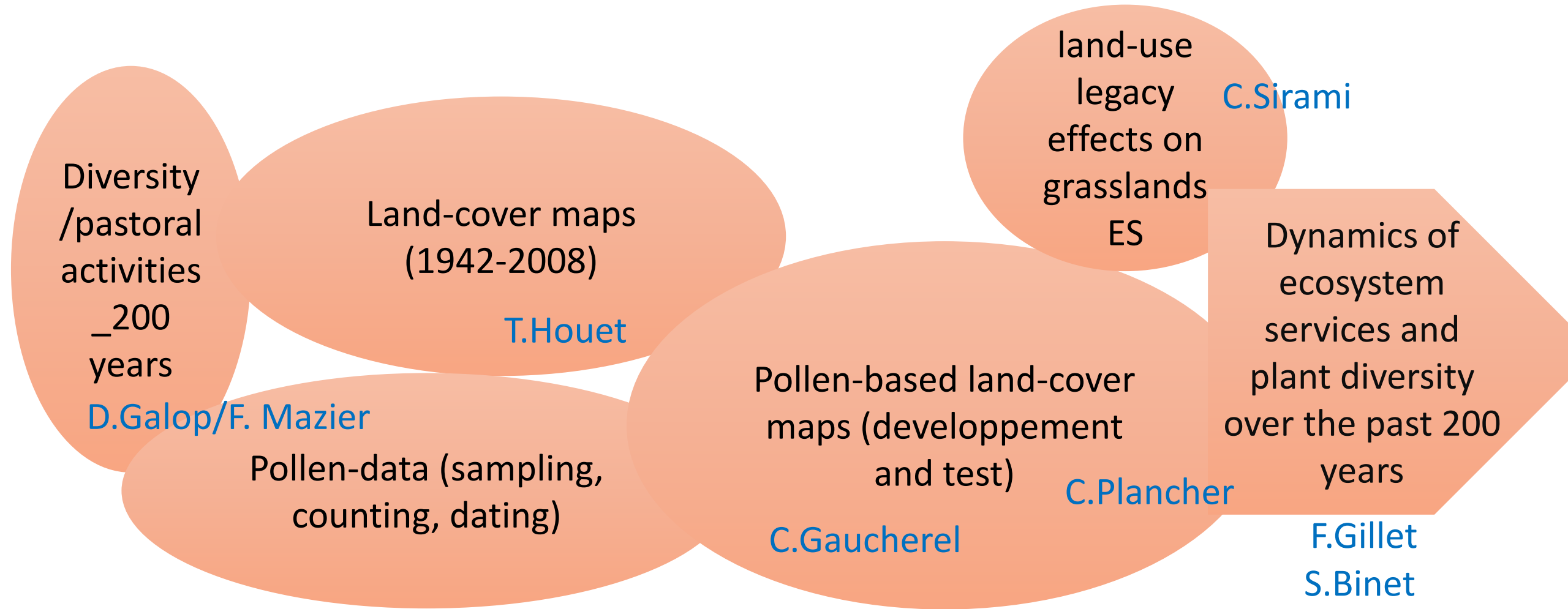
One trajectory



Gaucherel & Pommeau, 2019. Gaucherel et al. 2020



Construction of an interdisciplinary research_Role of OHM HV



Thanks for listening



Gaucheret
Philippe
Chaibi
Mazier
Dupuis
Houet
Sirami
Belly
Haunold
Lebeaud
Gillet
Galop
Binet
Lerigoleur
Paschal Laout
Herb
Bonnet
Plancher
Schwertz
Molina



BIOPAST
POPEYE

>10 papers
Master Students 6 M1, 3 M2, 1PhD, 1 postdoc

