



HAL
open science

European mink (*Mustela lutreola*) reference genome and population genomics

Alice Mouton, Christine Fournier-Chambrillon, Pascal Fournier, Jakub Skorupski, Przemyslaw Śmietana, Benoît Vacherie, Thomas Guérin, Emilie Payen, Laurie Bertrand, Ghislaine Magdelenat, et al.

► To cite this version:

Alice Mouton, Christine Fournier-Chambrillon, Pascal Fournier, Jakub Skorupski, Przemyslaw Śmietana, et al.. European mink (*Mustela lutreola*) reference genome and population genomics. 34th European Mustelid Colloquium, Sep 2022, Online conference, France. hal-03787589

HAL Id: hal-03787589

<https://hal.science/hal-03787589>

Submitted on 30 Oct 2023

HAL is a multi-disciplinary open access archive for the deposit and dissemination of scientific research documents, whether they are published or not. The documents may come from teaching and research institutions in France or abroad, or from public or private research centers.

L'archive ouverte pluridisciplinaire **HAL**, est destinée au dépôt et à la diffusion de documents scientifiques de niveau recherche, publiés ou non, émanant des établissements d'enseignement et de recherche français ou étrangers, des laboratoires publics ou privés.



European mink (*Mustela lutreola*) reference genome and population genomics

A. Mouton, C. Fournier-Chambrillon, P. Fournier J. Skorupski , P. Śmietana , B. Vacherie , T. Guérin , E. Payen, L. Bertrand, G. Magdelenat, B. Mairey, C. Hamon, M. Leprêtre, N. Martins, E. Brun, O. Beluche, S. Lebled, C. Milani, B. Istace, C. Belser, K. Labadie, C. Cruaud, P. H. Oliveira, J.M. Aury, P. Wincker, M. Põdra, M. Gerbault-Seureau, I. Marchand, M. Marinov, T. Maran, C. Bellanger, B. Bed'Hom J. Michaux

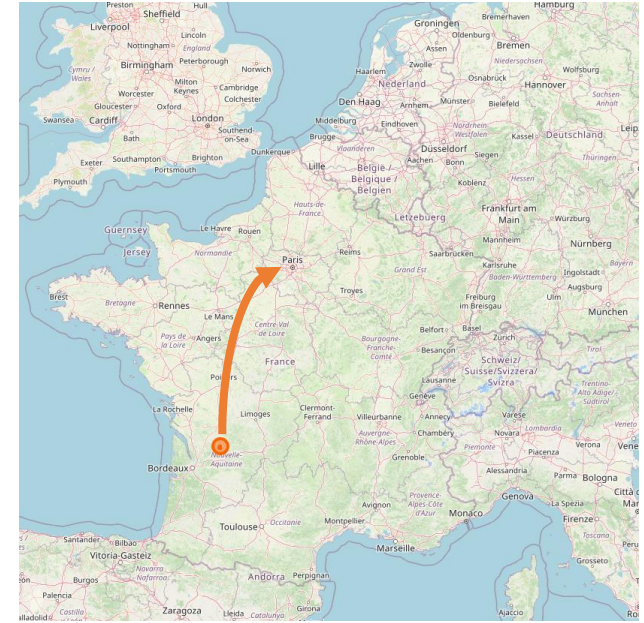
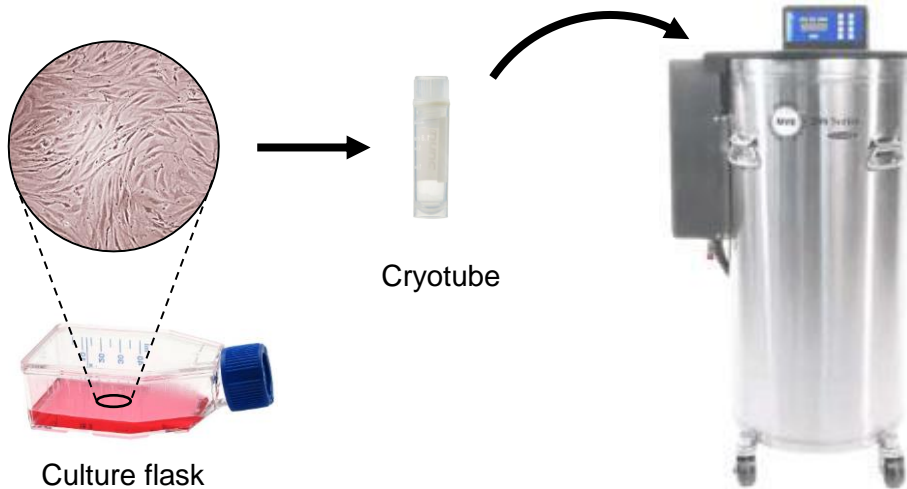


Mouton Alice, University of Liege

34th European Mustelid Colloquium September 2022

Reference genome : individual selected

- February 2006 : skin biopsy taken from a male captured by GREGE in SW France, in the framework of PNA (National Action Plan)
- Sent to MNHN (National Museum of Natural History, Paris) for establishment of cell culture in flasks
- March 2006 : cryopreservation in liquid nitrogen (-196°C) of cryotubes containing mink cells ("suspended life")



OpenStreetMap

Long term cryopreservation





ERGA
EUROPEAN REFERENCE GENOME ATLAS

Pilot Project

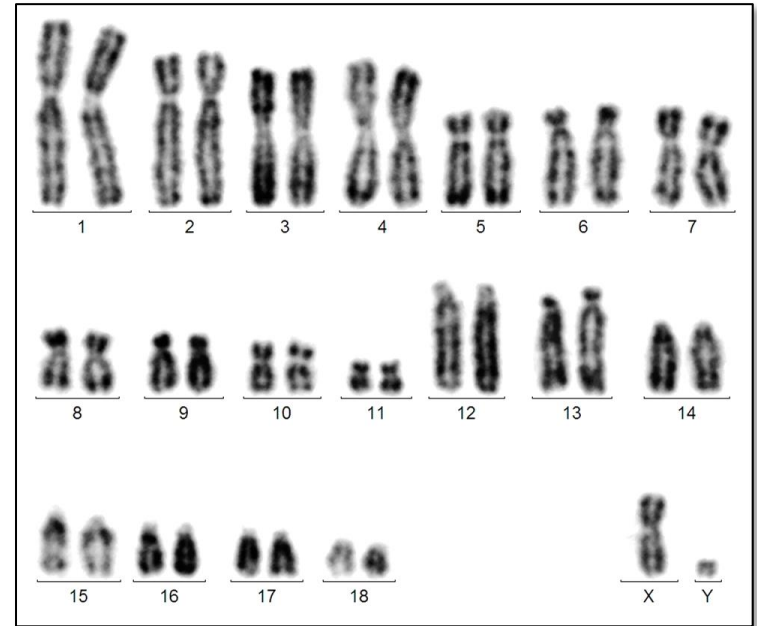
The European Reference Genome Atlas (ERGA) initiative is a pan-European scientific response to current threats to biodiversity. Reference genomes provide the most complete insight into the genetic basis that forms each species and represent a powerful resource in understanding how biodiversity functions. With approximately one fifth of the ~200,000 European species at risk of extinction, we need to act fast and together to generate high-quality complete genome resources in large scale.

*Science needs genomes to understand biodiversity,
biodiversity needs to be understood to be protected.*

Reference genome : ERGA pilot project

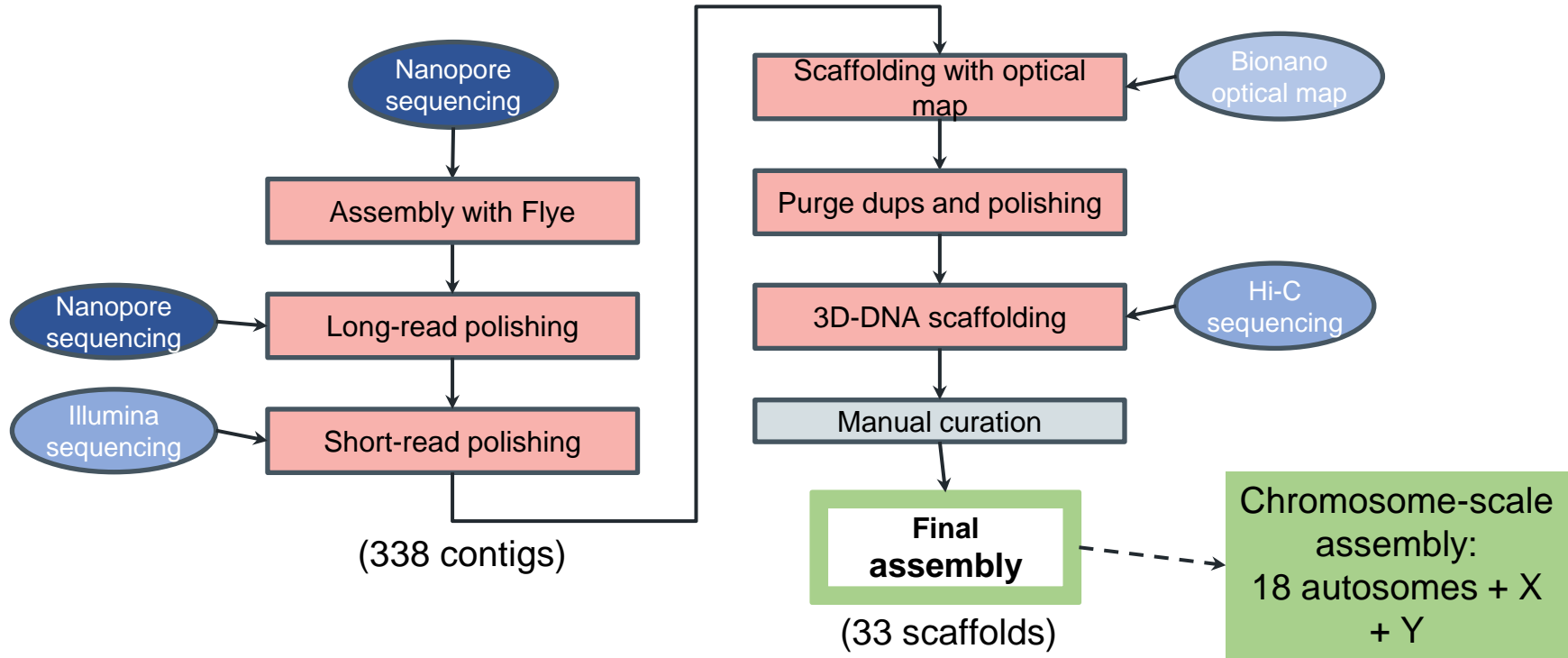
- ERGA (European Reference Genome Atlas) Pilot project
European mink selected as a critically endangered species
- June 2021 : New cell cultures initiated from samples cryopreserved in 2006
Control of karyotype, barcode
- July 2021 : 27 million cells produced and transferred at Genoscope (sequencing center) for :
 - DNA & RNA extraction
 - sequencing (long reads, short reads, Hi-C...)
 - genome assembly
- Mars 2022 : Assembly v1
- May 2022 : Assembly v2

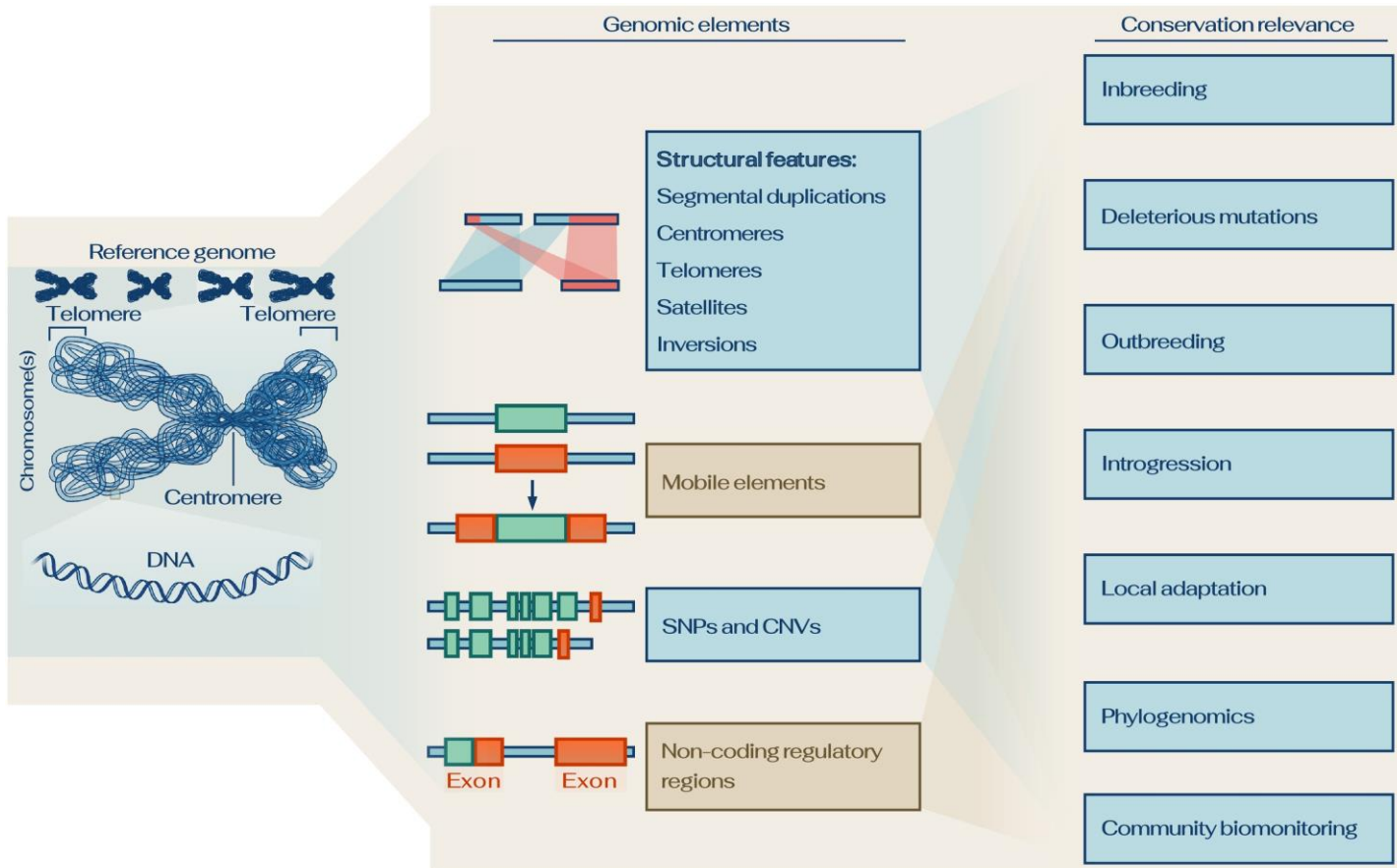
<https://www.erga-biodiversity.eu/pilot-project>



European mink karyotype (2N=38)
Bertrand Bed'hom (MNH Paris)

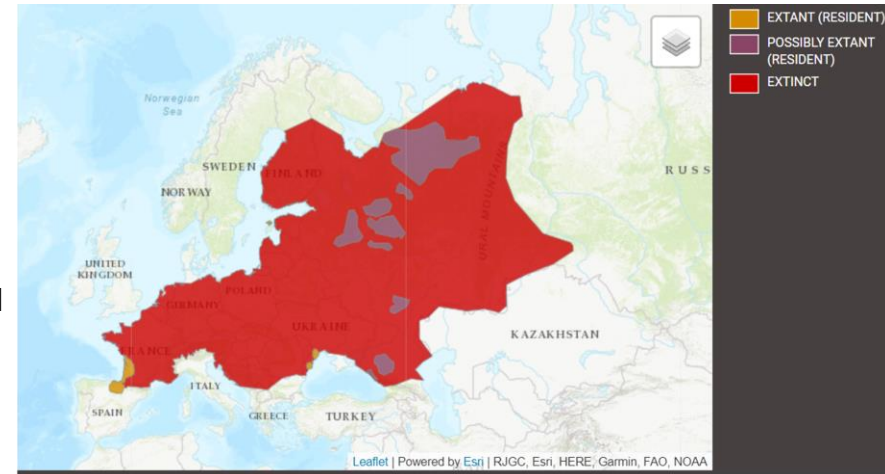
Reference genome : assembly process (Genoscope)





European mink (*Mustela lutreola*) is critically endangered (IUCN)

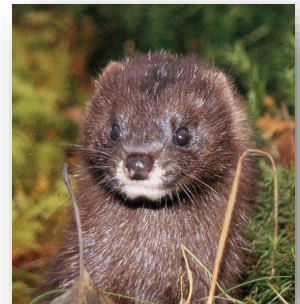
- Main threats: habitat loss and fragmentation, road collision, animal bites, confusion with american mink, rat poison.
- Current distribution into three isolated areas
- High risk of inbreeding depression in western Europe (~ 500 individuals estimated)



IUCN (International Union for Conservation of Nature) 2016. *Mustela lutreola*. The IUCN Red List of Threatened Species. Version 2019-3

=> Level of genomic diversity in Europe? Using 3RAD and Whole-genome resequencing

- large sets of markers that increase the ability to detect and quantify genetic variation in the population
- Identify chromosomal tracts of ancestry
- Demographic modeling
- Deleterious mutation



Whole Genome Resequencing



Two E.Minks from France (M,M)
Two E.Minks from Spain (M;F)
Two E.Minks from Romania (F,F)
Two E.Minks from Estonia

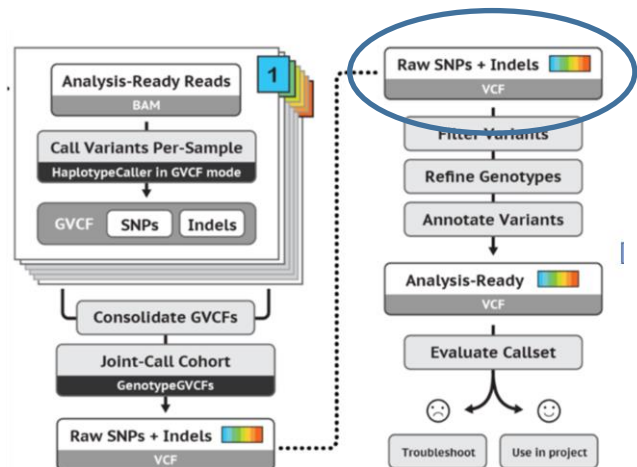
DNA sequencing
(Novogen, GIGA Uliege)
150 PE ~ 25X Coverage



Mapping Mustela V.2



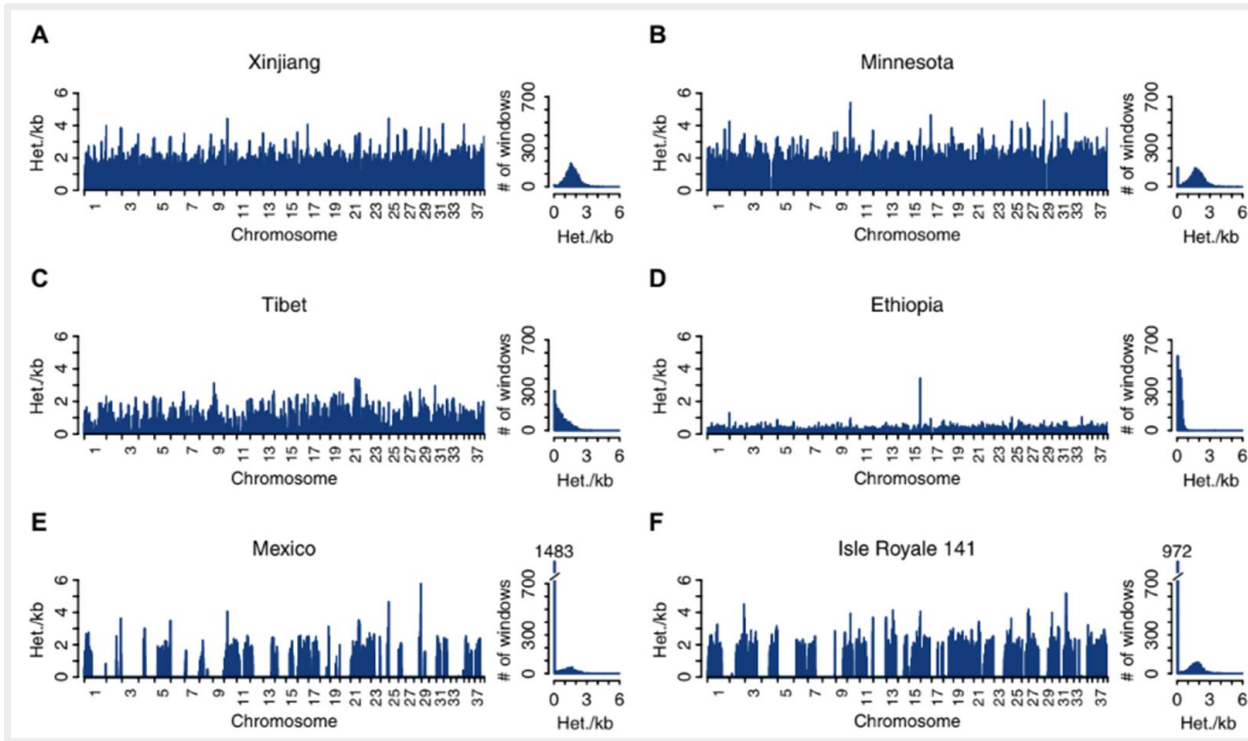
Mark Duplicate & Sort
(Picard)



Gatk best practice



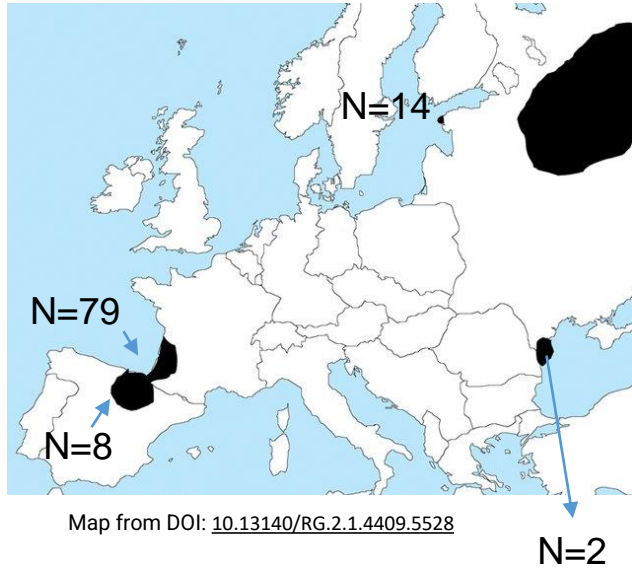
Downstreams analyses
(demography, admixture,
deleterious mutations,
ROH,...)



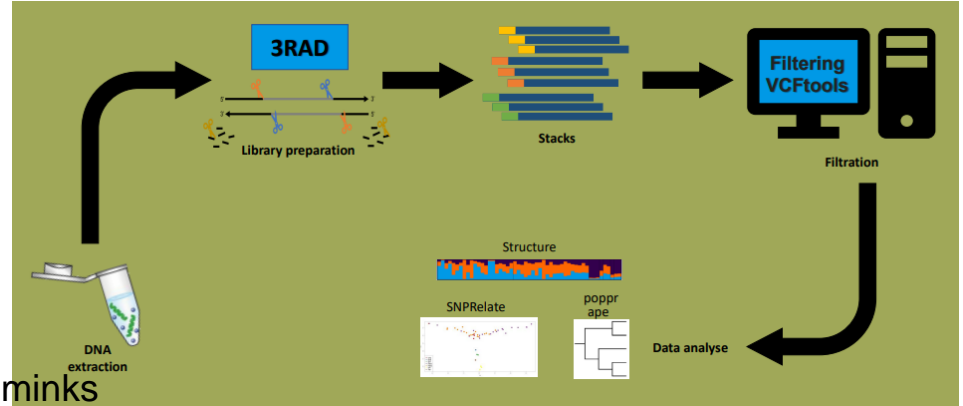
Distribution of GWH in wolves populations Robinson et al., Sci. Adv. 2019; 5 : eaau0757

How is the distributions of heterozygosity across the genome? Outbred (A,B), small isolated population (C,D) or inbred populations (E,F) ?

Natalia J. Bayona-Vázquez^{1,2,3,*}, Travis C. Glenn^{1,3,4,5,7}, Troy J. Kieran¹, Todd W. Pierson^{1,8}, Sandra L. Hoffberg^{4,9}, Peter A. Scott^{6,10}, Kerin E. Bentley^{4,11}, John W. Finger^{1,5,12}, Swarnali Louha³, Nicholas Troendle^{1,13}, Pindaro Diaz-Jaimes², Rodney Mauricio⁴ and Brant C. Faircloth⁷



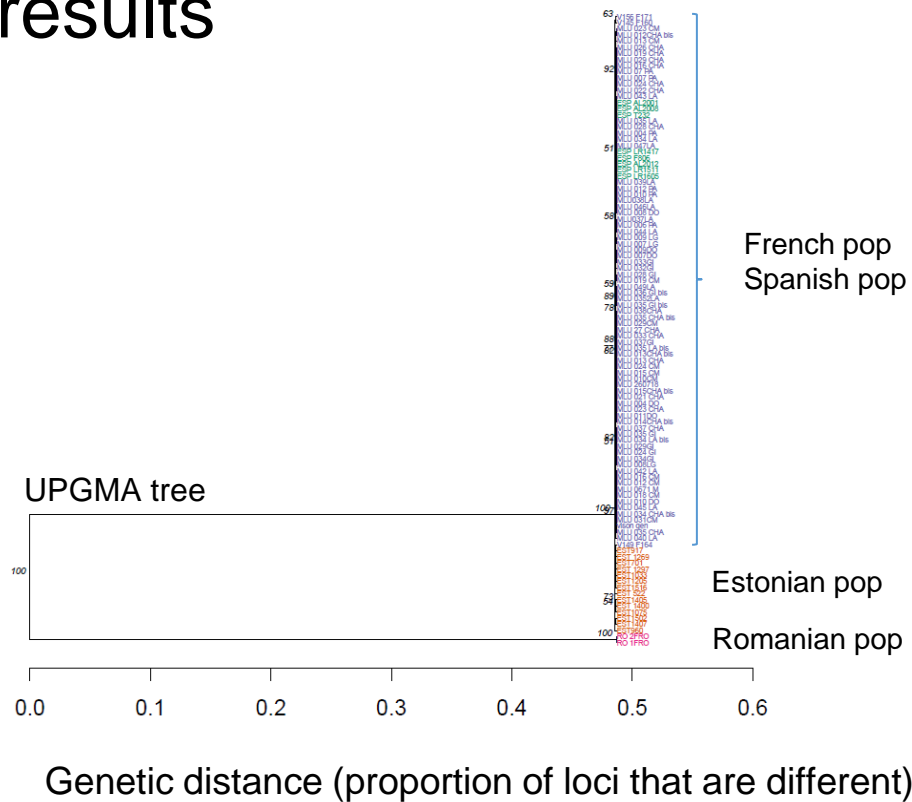
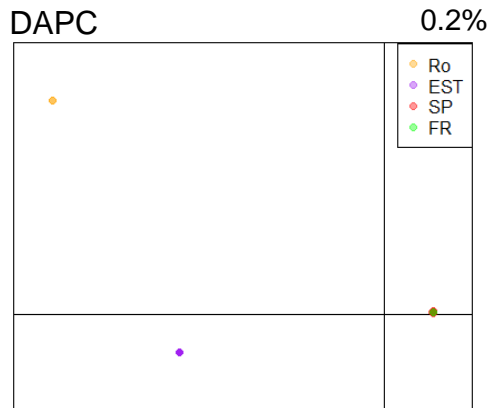
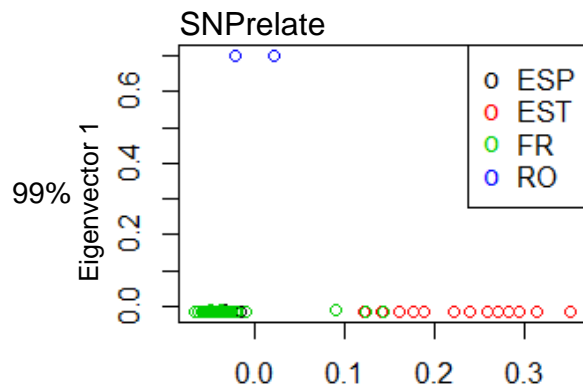
134 minks



103 minks

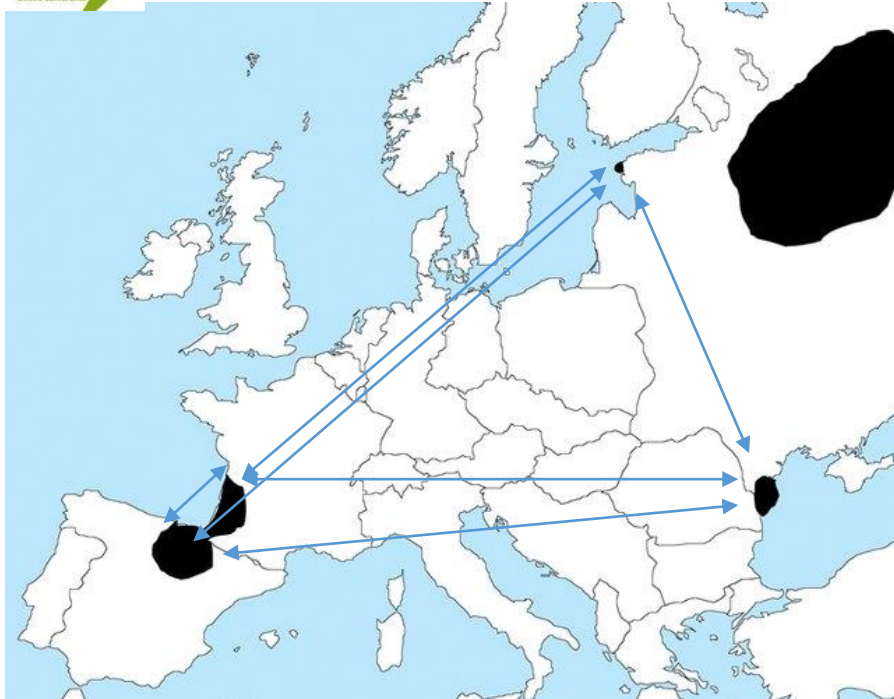
3577 SNPs

3RAD Preliminary results



High genetic differentiation between the Romanian samples and the other populations

3RAD Preliminary results



Map geographic distribution of the european mink from DOI: [10.13140/RG.2.1.4409.5528](https://doi.org/10.13140/RG.2.1.4409.5528)

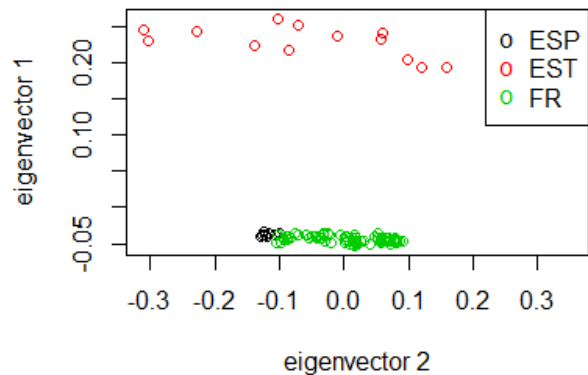
DiveRsity package

Fst \ Djost	Spain	Estonia	France	Romania
Spain		0	0	0.9824
Estonia	0.3242		0	0.9815
France	0.1459	0.4076		0.9825
Romania	0.9995	0.9977	0.9989	

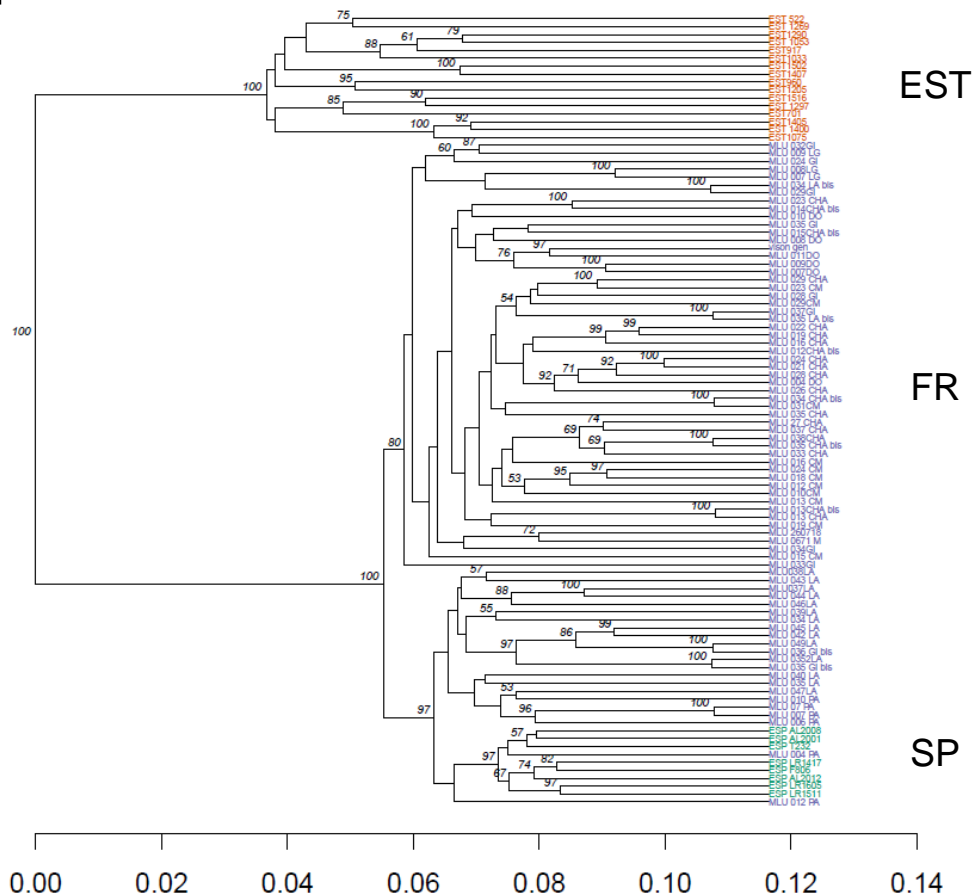
Djost index is very low except for the Romanian samples

Fst indexes are moderate to really high between the populations

3RAD Preliminary results: What happen if we remove the romanian samples ?



1736 SNPs
N=100





=> Geographic structure of the French population

1. Reference Genome

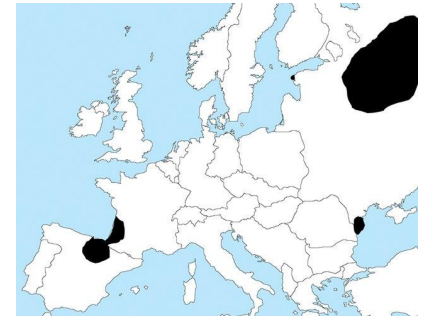
Finalize the reference genome assembly and start the annotation => *Mustela lutreola* v.3

2. Whole Genome resequencing

Eventually add two more individuals (EST) and continue the downstreams analyses with the final version + annotation

3. 3RAD analyses

Samples from Romania are highly divergent
French pop is more inbred than the Spanish and the Estonian pop
Pop gen on local populations



Map geographic distribution of the european mink from DOI: [10.13140/RG.2.1.4409.5528](https://doi.org/10.13140/RG.2.1.4409.5528)

Acknowledgments

- Genoscope labs (Patrick Wincker)
Caroline Belser, Simone Duprat, Benjamin Istace, Jean-Marc Aury
Corinne Cruaud ,Karine Labadie, Pedro Oliveira, Benoît Vacherie,
Thomas Guérin, Emilie Payen, Laurie Bertrand, Ghislaine Magdelenat,
Barbara Mairey, Chadia Hamon, Marine Leprêtre, Nathalie Martins,
Elodie Brun, Odette Beluche, Sandrine Lebled, Claire Milani, Caroline Belser

- MNHN Paris (France)

Bertrand Bed'Hom , Michèle Gerbault-Seureau

- GREGE (France)

Christine Fournier-Chambrillon , Pascal Fournier

- OFB (France)

Christelle Bellanger , Maylis Fayet

- University of Szczecin (Poland)

Jakub Skorupski, P. Śmietana

- “Danube Delta” National Institute for Research and Development, Tulcea (Romania)

M. Marinov

- Tragsatec, Division of Environmental Services (Spain)

Madis Põdra

- Foundation for research on ethology and biodiversity (FIEB)

Carmen Aranda

- Species Conservation Research Center (Estonia)

Tiit Maran

- University of Liege (Belgium)

Johan Michaux



FRANCE
GENOMIQUE

