



HAL
open science

Perennial water ice identified in the south polar cap of Mars

Jean-Pierre Bibring, Yves Langevin, François Poulet, Aline Gendrin, Brigitte Gondet, Michel Berthé, Alain Soufflot, Pierre Drossart, Michel Combes, Giancarlo Bellucci, et al.

► **To cite this version:**

Jean-Pierre Bibring, Yves Langevin, François Poulet, Aline Gendrin, Brigitte Gondet, et al.. Perennial water ice identified in the south polar cap of Mars. *Nature*, 2004, 428, pp.627-630. 10.1038/nature02461 . hal-03785230

HAL Id: hal-03785230

<https://hal.science/hal-03785230>

Submitted on 2 May 2024

HAL is a multi-disciplinary open access archive for the deposit and dissemination of scientific research documents, whether they are published or not. The documents may come from teaching and research institutions in France or abroad, or from public or private research centers.

L'archive ouverte pluridisciplinaire **HAL**, est destinée au dépôt et à la diffusion de documents scientifiques de niveau recherche, publiés ou non, émanant des établissements d'enseignement et de recherche français ou étrangers, des laboratoires publics ou privés.

Perennial water ice identified in the south polar cap of Mars

Jean-Pierre Bibring¹, Yves Langevin¹, François Poulet¹, Aline Gendrin¹,
Brigitte Gondet¹, Michel Berthé¹, Alain Soufflot¹, Pierre Drossart²,
Michel Combes², Giancarlo Bellucci³, Vassili Moroz⁴, Nicolas Mangold⁵,
Bernard Schmitt⁶ & the OMEGA team^{*1}

Institut d'Astrophysique Spatiale, Orsay Campus, 91405, France

LESIA, Observatoire de Paris/Meudon, 92195 Meudon, France

IFSI-INAF, Rome, Italy

IKI, Moscow, Russia

OrsayTerre, Orsay Campus, 91405, France

Laboratoire de Planétologie de Grenoble, 38400, France

* A list of all the members of the OMEGA team and their affiliations appears at the end of the paper

The inventory of water and carbon dioxide reservoirs on Mars are important clues for understanding the geological, climatic and potentially exobiological evolution of the planet¹. From the early mapping observation of the permanent ice caps on the martian poles^{2,3}, the northern cap was believed to be mainly composed of water ice, whereas the southern cap was thought to be constituted of carbon dioxide ice. However, recent missions (NASA missions Mars Global Surveyor and Odyssey) have revealed surface structures⁴, altimetry profiles⁵, underlying buried hydrogen⁶, and temperatures of the south polar regions that are thermodynamically consistent with a mixture of surface water ice and carbon dioxide⁷. Here we present the first direct identification and mapping of both carbon dioxide and water ice in the martian high southern latitudes, at a resolution of 2 km, during the local summer, when the extent of the polar ice is at its minimum. We observe that this south polar cap contains perennial water ice in extended areas: as a small admixture to carbon dioxide in the bright regions; associated with dust, without carbon dioxide, at the edges of this bright cap; and, unexpectedly, in large areas tens of kilometres away from the bright cap.

The ESA/Mars Express Orbiter⁸ was inserted into Mars orbit on 25 December 2003. The Observatoire pour la Minéralogie, l'Eau, les Glaces et l'Activité (OMEGA) instrument⁹, one of the seven investigating instruments on board, is an imaging spectrometer analysing the diffused solar light and the planetary thermal emission. On each resolved pixel, 1.2 mrad in the instantaneous field of view, OMEGA acquires a spectrum in 352 contiguous spectral channels from 0.35 to 5.1 μm , with a spectral sampling ranging from 7 nm (in the visible) to 13 nm (from 1.0 to 2.7 μm) and 20 nm (from 2.7 to 5.1 μm). A few initial observations were performed soon after Mars orbit insertion, in particular while the spacecraft was overflying the south polar areas. The altitude of observation ranged from $\sim 1,500$ km to $\sim 2,000$ km, providing an OMEGA surface sampling of ~ 2 km. OMEGA thus mapped a large fraction of the south polar regions, along four distinct orbits, from 18 January to 11 February 2004 (solar longitude, $L_{\odot} = 335^{\circ}$ to 348°)—that is, about one month before the martian southern autumn equinox. At the time of the observations, the Sun's elevation was very low ($< 10^{\circ}$); however, given the very high performances of OMEGA, several tens of thousands of spectra were acquired with signal-to-noise ratios of > 100 over almost the entire spectral domain. From the acquired spectra, it is possible to derive coupled maps of a variety of parameters and properties: in particular, the major icy constituents, CO_2 and H_2O , have several unambiguous diagnostic spectral signatures enabling the mapping of their respective distributions over the imaged areas (see below).

The OMEGA spectral images exhibit well-characterized high albedo perennial polar ice patterns. From their near-infrared spectrum, we can assert that these bright areas are those where

CO₂ ice is highly concentrated (Fig. 1a).

A crucial finding is the identification of H₂O ice, with a varying concentration over a much larger area (Fig. 1b). H₂O ice is found in three distinct units, as follows.

Unit 1. On the bright cap. In this unit, water ice is mixed with large concentrations of CO₂ ice. This makes its spectral identification more difficult than in the two other units, as CO₂ ice exhibits spectral features in the same spectral domain. It requires a careful

analysis, illustrated in Fig. 2, where a typical OMEGA spectrum of a pixel located in this CO₂ ice cap is compared to modelled spectra obtained with either pure CO₂ ice or a mixture of H₂O ice and CO₂ ice. We show that pure CO₂ ice cannot account for the observed spectra: the presence of H₂O ice is required. The best fit is obtained with a mixture of 15 wt% H₂O ice, in the form of an intimate molecular mixture, rather than a simple geometrical mixture of two pure components.

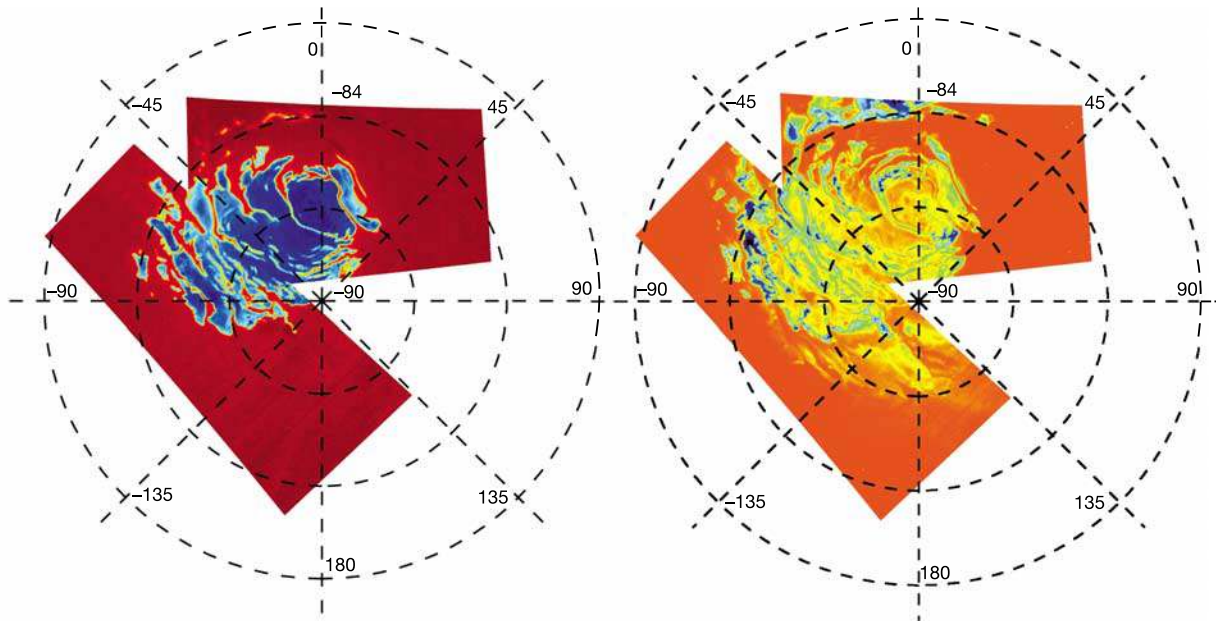


Figure 1 Global maps of CO₂ and H₂O ices at the south pole of Mars. Left, the CO₂-ice absorption feature is scaled from blue (deep) to brown (CO₂-ice-free areas); right, mapping of the H₂O ice, from blue (deep absorption) to red (ice-free). Comparison shows

that the H₂O-ice areas extend far beyond the CO₂-rich bright cap, along its scarps up to isolated units tens of kilometres wide.

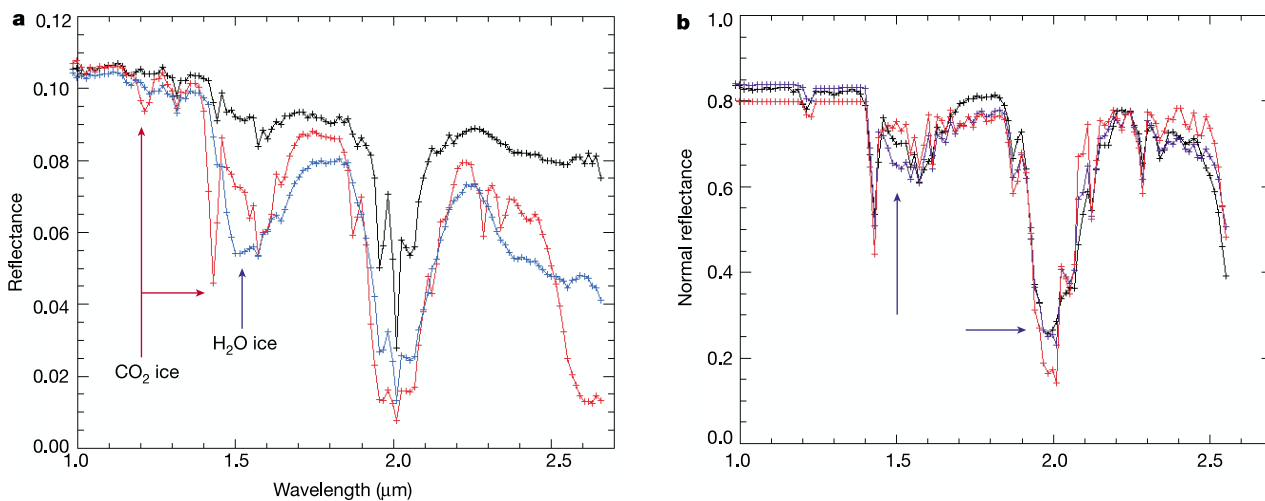


Figure 2 Near-infrared spectra of CO₂ ice and H₂O ice in Mars polar units. **a**, 1.0 to 2.6 μm part of spectra acquired by OMEGA on an ice-free zone (black), on the CO₂-ice-rich bright cap (red) and on an H₂O-ice-rich scarp (blue). In addition to the major atmospheric spectral features, they exhibit the specific CO₂ and H₂O ice absorptions, some of them being indicated (arrows). The scarps are seen to have none of the numerous CO₂-ice diagnostic features. **b**, OMEGA spectrum of a pixel located on the CO₂-rich cap (black), after removal of the atmospheric contribution, is compared to the best-fit modelled spectrum of a sample containing CO₂ ice only (red, r.m.s. = 0.057) and to the

spectrum of a mixture of CO₂ and H₂O (blue, r.m.s. = 0.035), indicating that some H₂O is required to account for the pattern observed at 1.5 and 2.0 μm (arrows). The H₂O/CO₂ ratio providing the best fit is 15 wt% H₂O, in the form of an intimate mixing. However, some departure from the actual spectrum is still present, mainly at 1.5 μm ; this could be accounted for by a complex mixture including H₂O/CO₂ clathrate, which could not yet be simulated in the absence of relevant optical constants. The synthetic spectra have been calculated using the Shkuratov–Poulet¹⁵ model.

Unit 2. On the scarps around the residual cap. This H₂O ice is almost completely CO₂-ice-free, and appears darker than the surrounding bright CO₂-ice-rich cap; Fig. 3 illustrates the correlation between the albedo, the H₂O content and the CO₂ content of the ice: the darker the ice, the richer it is in H₂O, and the more depleted it is in CO₂.

Unit 3. Along vast zones expanding down slope in stratified terrains, tens of kilometres wide, and tens of kilometres away from

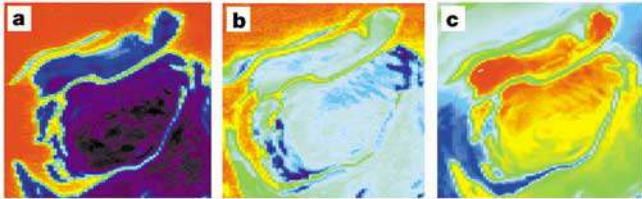


Figure 3 Correlated variations of the CO₂ ice, H₂O ice and albedo. **a**, Map of the CO₂ ice, from deep blue (higher concentration) to red (ice-free), matching the bright cap, centred around 87° (latitude) and 0° (longitude). **b**, Same area mapped for its H₂O-ice content. **c**, Same area, seen in its near infrared *I/F* (intensity divided by solar flux), from dark (blue to green) to bright (red). Local *I/F* variations within the cap are clearly correlated to the H₂O/CO₂ ratio: the bluest water-ice areas are highly depleted in CO₂, and darker, while the brighter areas are those where H₂O is depleted in favour of CO₂.

the CO₂-ice-rich perennial caps. These water-ice-rich areas are CO₂-free: they appear much darker than the bright CO₂-ice-rich cap, both in the visible and the near-infrared, which reflects their high dust concentration, and would confirm the scenarios where H₂O precipitates together with dust. The OMEGA processed data show that the H₂O-to-dust ratio varies, with no clear correlation with the local topography or relief (Sun illumination angle).

The OMEGA units 2 and 3 partly match the Af unit in the USGS I-2686 geological map¹⁰. Af is defined on the basis of its albedo and colour, found to be “intermediate between those of residual polar ice cap and dust unit”¹⁰. The Af unit is interpreted as a “mixture of CO₂ frost and defrosted ground”¹⁰, while the OMEGA observation shows CO₂-ice-free exposed mixtures of water ice and dust.

Figure 4 illustrates the relation found between the composition as inferred from the OMEGA spectral images and the surface morphology revealed by the Mars Orbiting Camera (MOC) high-resolution images on the Mars Global Surveyor (MGS) mission. From right to left of the MOC strip (Fig. 4d), we observe the bright polar ice, which exhibits irregular patterns similar to ‘Swiss cheese’ (ref. 11); OMEGA results demonstrate that this area is predominantly constituted of CO₂ ice. It is followed by the H₂O-ice-rich areas, free of CO₂, which by contrast are characterized by very smooth surfaces. Within these H₂O-ice-rich areas, close to the CO₂ ice, we observe polygonal features; this structure is consistent with

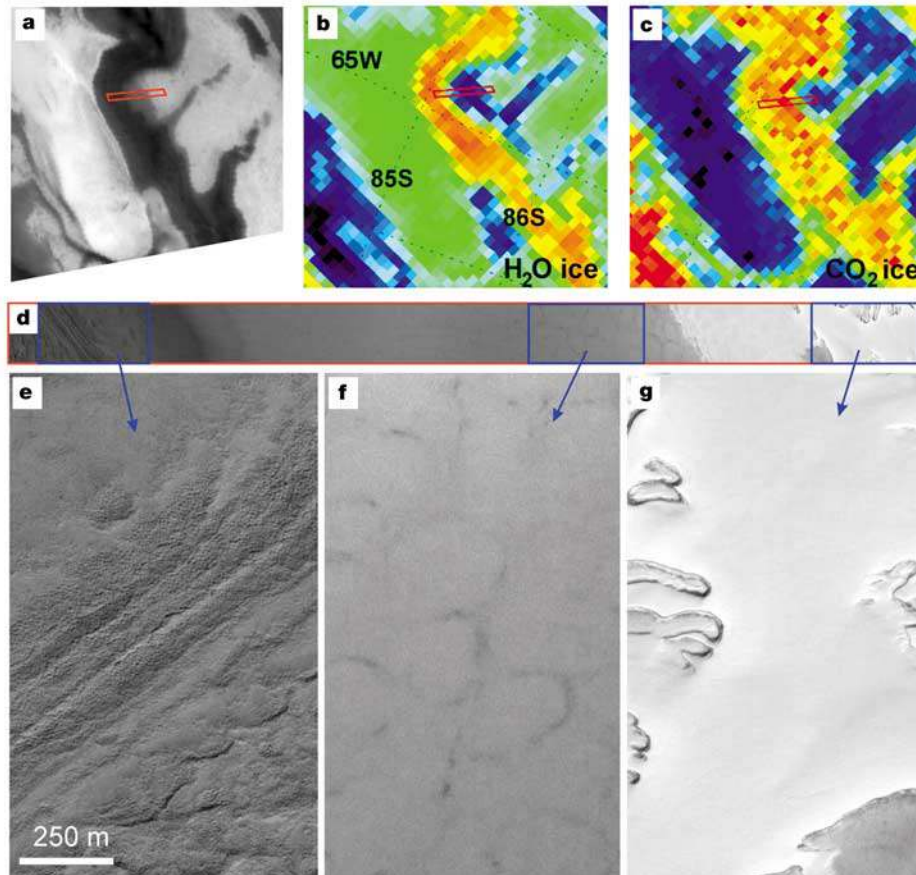


Figure 4 Transition from CO₂ ice to H₂O ice. **a**, MOC (NASA/JPL/MSSS) context image, exhibiting the bright polar areas. **b**, Map, within the same area, of the H₂O ice as identified by OMEGA (processed 1.5 μm feature, see Fig. 2), with a blue to red colour scale; the bluest is the richest in H₂O. **c**, Same mapping of the CO₂-ice features. **d**, Enlargement of the strip (image M13-01891, at $L_{\odot} = 325.3^{\circ}$) marked by the red rectangles in **a**, **b** and **c**. It exhibits the variety of terrains identified by the MOC, examples being enlarged

following the arrows (**e**, **f**, **g**), from the bright ‘Swiss cheese’-like structured ice, towards the dark layer terrain on the left. The OMEGA-derived maps indicate the composition of each unit: CO₂-rich ice for the bright unit; ice-free for the layer terrains; and H₂O ice for the smooth dark terrains in between, with polygonal structures closer to the bright cap. These structures can also be observed in the transition zone (between **f** and **g**), through a thin covering layer of CO₂ ice.

them resulting from thermal retraction. At the transition between the bright cap and the smooth dusty (darker) H₂O-ice-exposed units, these polygonal features are seen through a thin and bright CO₂ ice layer. The ice-free stratified terrains expand then to the left of the image.

Wherever CO₂ ice is stable, it traps solid H₂O. OMEGA data show large areas where CO₂ ice has sublimated away, while water ice remains, mostly mixed with dust. The perennial southern cap thus by far exceeds the bright CO₂-rich icy area. Moreover, the lack of slope change at the transition between the bright cap and the surrounding water-ice polygonal areas is an indication that the CO₂-ice layer might well be restricted to a fairly thin layer, no more than some metres in depth, in agreement with previous estimates derived from shadow measurements in quasi-circular depressions¹¹. OMEGA spectral images of the bright cap and of its scarps are consistent with a model in which H₂O ice is present in the underlying material, a scenario which has been proposed to explain the morphology of the ‘Swiss cheese’ terrains¹².

The underlying material, over 1–3 km in thickness and some 400 km in size, according to the Mars Orbiter Laser Altimeter (MOLA) polar cap profile, is likely to constitute a distinct geological unit as inferred from its morphology¹¹. The direct OMEGA surface compositional measurements support a model in which the bulk of this unit is constituted of dust mixed with water ice, as predicted by mechanical modelling¹³. The perennial south polar cap would then constitute a significant fraction of the overall H₂O reservoir. Conversely, if CO₂ ice is indeed restricted to the bright areas, possibly concentrated in a thin surface veneer, it would not constitute a major sink for the initial atmospheric CO₂.

The inventory of condensed volatiles on Mars, in all potential phases (gas, clouds, hydrated minerals, frosts, ices, permafrost, liquids), at and below its surface, is central to understanding the evolution of the planet, from geological timescales to seasonal variations. Part of the answer to the question of Mars having harboured life in the past, and to the issue of Mars hosting future human exploration, is to be deciphered in this inventory. This is why contributing to this inventory, in particular on the poles, remains a major goal for Mars space exploration¹⁴. With the ongoing Mars Express mission just starting its global coverage of Mars, OMEGA will continue mapping the CO₂ and H₂O condensation/sublimation cycles at all south and north latitudes; the goal is to provide a quantitative evaluation of the seasonal and perennial condensed reservoirs of these crucial volatile species. In parallel, the Mars Advanced Radar for Subsurface and Ionosphere Sounding (MARSIS) experiment will start its mapping phase in May 2004. It should enable an accurate determination of the volume of the H₂O-ice-rich surface permafrost identified by OMEGA at the south pole, and compare it with a potential subsurface permafrost considered up until now to be the major Mars water reservoir.

11. Thomas, P. C. *et al.* North–south geological differences between the residual polar caps on Mars. *Nature* **404**, 161–164 (2000).
12. Byrne, S. & Ingersoll, A. P. A sublimation model for martian south polar ice features. *Science* **299**, 1051–1053 (2003).
13. Nye, J. E., Durham, W. B., Schenk, P. M. & Moore, J. M. The instability of a south polar cap on Mars composed of carbon dioxide. *Icarus* **144**, 449–455 (2000).
14. Clifford, S. M. *et al.* The state and future of Mars polar science and exploration. *Icarus* **144**, 210–242 (2000).
15. Poulet, F., Cuzzi, J. N., Cruikshank, D. P., Roush, T. & Dalle Ore, C. M. Comparison between the Shkuratov and Hapke scattering theories for solid planetary surfaces: Application to the surface composition of two Centaurs. *Icarus* **160**, 313–324 (2002).

Competing interests statement The authors declare that they have no competing financial interests.

Correspondence and requests for materials should be addressed to J.-P.B. (bibring@ias.u-psud.fr).

The OMEGA team M.Berthé¹, J.-P.Bibring¹, Y.Langevin¹, S.Erard¹, O.Forni¹, A.Gendrin¹, B.Gondet¹, N.Manaud¹, F.Poulet¹, G.Poulleau¹, A.Soufflot¹, M.Combes², P.Drossart², T.Encrenaz², T.Fouchet², R.Melchiorri², G.Bellucci³, F.Altieri³, V.Formisano³, G.Bonello³, S.Fonti³, F.Capaccioni³, P.Cerroni³, A.Coradini³, V.Kottsov⁴, N.Ignatiev⁴, V.Moroz⁴, D.Titov⁴, L.Zasova⁴, N.Mangold⁵, P.Pinnet⁶, B.Schmitt⁷, C.Sotin⁸, E.Hauber⁹, H.Hoffmann⁹, R.Jaumann⁹, U.Keller¹⁰, R.Arvidson¹¹, J.Mustard¹², T.Duxbury¹³ & F.Forget¹⁴

Affiliations for authors: 1, IAS, Orsay Campus, 91405, France; 2, LESIA, Observatoire de Paris/Meudon, 92195 Meudon, France; 3, IFSI-INAF, Rome, Italy; 4, IKI, Moscow, Russia; 5, OrsayTerre, Orsay Campus, 91405, France; 6, Observatoire Midi-Pyrénées, 31000 Toulouse, France; 7, Laboratoire de Planétologie, 38400, France; 8, Planétologie, Université de Nantes, France; 9, DLR, Berlin, Germany; 10, MPAE, Lindau, Germany; 11, Earth and Planetary Sciences, Washington University, St Louis, Missouri 63130, USA; 12, Geological Sciences, Brown University, Providence, Rhode Island 02912, USA; 13, JPL, Pasadena, California, USA; 14, LMD, Université de Paris 6, 75252, Paris, France

1. Kieffer, H. H. & Zent, A. A. *Mars* (eds Kieffer, H. H., Jakovsky, B. M., Snyder, C. W. & Matthews, M. S.) 1180–1220 (Univ. Arizona Press, Tucson/London, 1992).
2. Kieffer, H. H. Mars south polar spring and summer temperatures: a residual CO₂ frost. *J. Geophys. Res.* **84**, 8263–8288 (1979).
3. Paige, D. A., Herkenhoff, K. E. & Murray, B. C. Mariner 9 observations of the south polar cap of Mars: evidence of residual CO₂ frost. *J. Geophys. Res.* **95**, 1319–1335 (1990).
4. Smith, P. H. *et al.* The global topography of Mars and implications for surface evolution. *Science* **284**, 1495–1503 (1999).
5. Schenk, P. M. & Moore, J. M. Stereo topography of the south polar region of Mars: Volatile inventory and Mars Polar Lander landing site. *J. Geophys. Res.* **E 105**, 24529–24546 (2000).
6. Boynton, W. V. *et al.* Distribution of hydrogen in the near surface of Mars: Evidence for subsurface ice deposits. *Science* **297**, 81–85 (2002).
7. Titus, N., Kieffer, H. H. & Christensen, P. R. Exposed water ice discovered near the South Pole of Mars. *Science* **299**, 1048–1051 (2003).
8. Mars Express Project Team. Mars Express: closing in on the Red Planet. *ESA Bull.* **115**, 10–17 (2003).
9. Bibring, J.-P. *et al.* OMEGA: Observatoire pour la Minéralogie, l’Eau, les Glaces et l’Activité, (SP-1240, ESA, in the press).
10. Herkenhoff, K. E. *Geologic Map of the MTM-85000 Quadrangle, Planum Australe Region of Mars* (USGS Geologic Investigations Map Series I-2686, Washington, DC, 2001).