



HAL
open science

A new constraint on the time dependence of the proton-to-electron mass ratio. Analysis of the Q 0347-383 and Q 0405-443 spectra

A. Ivanchik, Patrick Petitjean, D. Varshalovich, B. Aracil, Raghunathan Srianand, Hum Chand, Cédric Ledoux, P. Boissé

► **To cite this version:**

A. Ivanchik, Patrick Petitjean, D. Varshalovich, B. Aracil, Raghunathan Srianand, et al.. A new constraint on the time dependence of the proton-to-electron mass ratio. Analysis of the Q 0347-383 and Q 0405-443 spectra. *Astronomy & Astrophysics - A&A*, 2005, 440, pp.45-52. 10.1051/0004-6361:20052648 . hal-03785132

HAL Id: hal-03785132

<https://hal.science/hal-03785132v1>

Submitted on 21 Oct 2022

HAL is a multi-disciplinary open access archive for the deposit and dissemination of scientific research documents, whether they are published or not. The documents may come from teaching and research institutions in France or abroad, or from public or private research centers.

L'archive ouverte pluridisciplinaire **HAL**, est destinée au dépôt et à la diffusion de documents scientifiques de niveau recherche, publiés ou non, émanant des établissements d'enseignement et de recherche français ou étrangers, des laboratoires publics ou privés.

A new constraint on the time dependence of the proton-to-electron mass ratio

Analysis of the Q 0347–383 and Q 0405–443 spectra

A. Ivanchik¹, P. Petitjean^{2,3}, D. Varshalovich¹, B. Aracil^{2,4}, R. Srianand⁵, H. Chand⁵, C. Ledoux⁶, and P. Boissé^{2,3}

¹ Ioffe Physical Technical Institute, Polytekhnicheskaya 26, 194021 Saint-Petersburg, Russia
e-mail: iav@astro.ioffe.rssi.ru

² Institut d’Astrophysique de Paris – CNRS, 98bis Boulevard Arago, 75014 Paris, France
e-mail: ppetitje@iap.fr

³ LERMA, Observatoire de Paris, 61 avenue de l’Observatoire, 75014 Paris, France

⁴ Department of Astronomy, University of Massachusetts, 710 North Pleasant Street, Amherst, MA 01003-9305, USA

⁵ IUCAA, Post Bag 4, Ganeshkhind, Pune 411007, India

⁶ European Southern Observatory, Alonso de Córdova 3107, Casilla 19001, Vitacura, Santiago, Chile

Received 2 January 2004 / Accepted 10 May 2005

Abstract. A new limit on the possible cosmological variation of the proton-to-electron mass ratio $\mu = m_p/m_e$ is estimated by measuring wavelengths of H₂ lines of Lyman and Werner bands from two absorption systems at $z_{\text{abs}} = 2.5947$ and 3.0249 in the spectra of quasars Q 0405–443 and Q 0347–383, respectively. Data are of the highest spectral resolution ($R = 53\,000$) and S/N ratio (30÷70) for this kind of study. We search for any correlation between z_i , the redshift of observed lines, determined using laboratory wavelengths as references, and K_i , the sensitivity coefficient of the lines to a change of μ , that could be interpreted as a variation of μ over the corresponding cosmological time. We use two sets of laboratory wavelengths, the first one, Set (A) (Abgrall et al. 1993, J. Mol. Spec., 157, 512), based on experimental determination of energy levels and the second one, Set (P) (Philip et al. 2004, Can. J. Chem., 82, 713), based on new laboratory measurements of some individual rest-wavelengths. We find $\Delta\mu/\mu = (3.05 \pm 0.75) \times 10^{-5}$ for Set (A), and $\Delta\mu/\mu = (1.65 \pm 0.74) \times 10^{-5}$ for Set (P). The second determination is the most stringent limit on the variation of μ over the last 12 Gyr ever obtained. The correlation found using Set (A) seems to show that some amount of systematic error is hidden in the determination of energy levels of the H₂ molecule.

Key words. cosmology: theory – cosmology: observations – quasars: absorption lines – quasars: individual: Q 0405–443 – quasars: individual: Q 0347–383

1. Introduction

Contemporary theories of fundamental interactions (Strings/M-theory and others) predict some variation of the fundamental physical constants in the course of the evolution of the Universe. Most of the predictions of such theories lie in the energy range inaccessible to current experiments ($E \sim 10^{19}$ GeV). However, at lower energy, variations of the fundamental constants, in principle, could be a possible observational manifestations of these theories. It is therefore important to constrain these variations as a step toward a better understanding of Nature.

A considerable amount of interest in the possibility of time variations of fundamental constants has been generated by recent observations of quasar absorption systems. Using a new method, the so-called Many-Multiplet analysis (Webb et al. 1999; Dzuba et al. 1999), Murphy et al. (2003) have claimed

that the fine structure constant, $\alpha = e^2/\hbar c$, could have varied over the redshift range $0.2 < z < 3.7$ with the amplitude $\Delta\alpha/\alpha = (-0.543 \pm 0.116) \times 10^{-5}$. However, a stringent upper limit on the variation of α has been obtained from a large sample of UVES data, $\Delta\alpha/\alpha = (-0.06 \pm 0.06) \times 10^{-5}$ over $0.4 < z < 2.3$ (Srianand et al. 2004; Chand et al. 2004). In addition, Quast et al. (2004) derived $\Delta\alpha/\alpha = (-0.04 \pm 0.19 \pm 0.27) \times 10^{-5}$ from an analysis of one system at $z_{\text{abs}} = 1.15$.

One way to solve the controversy is to constrain other fundamental constants. Different theoretical models of the fundamental physical interactions predict different variations of their values and different relations between cosmological deviations of the constants (α , μ , and others, see Calmet & Fritzsche 2002; Langacker et al. 2002; Olive et al. 2002; Dent & Fairbairn 2003). Therefore, it is crucial to couple measurements of different dimensionless fundamental constants.

2. The proton-to-electron mass ratio $\mu = m_p/m_e$

Here we use QSO absorption lines to constrain $\Delta\mu/\mu$ with $\Delta\mu = \mu - \mu_0$, where μ is the proton-to-electron mass ratio at the epoch of the QSO absorption spectrum formation and μ_0 is its contemporary value.

In the framework of unified theories (e.g. SUSY GUT) with a common origin of the gauge fields, variations of the gauge coupling α_{GUT} at the unified scale ($\sim 10^{16}$ GeV) will induce variations of all the gauge couplings in the low energy limit, $\alpha_i = f_i(\alpha_{\text{GUT}}, E)$, and provide a relation $\Delta\mu/\mu \simeq R\Delta\alpha/\alpha$, where R is a model dependent parameter and $|R| \lesssim 50$ (e.g. Dine et al. 2003; and references therein). Thus, independent estimates of $\Delta\alpha/\alpha$ and $\Delta\mu/\mu$ could constrain the mass formation mechanisms in the context of unified theories.

At present the proton-to-electron mass ratio has been measured with a relative accuracy of 2×10^{-9} and equals $\mu_0 = 1836.15267261(85)$ (Mohr & Taylor 2000). Laboratory metrological measurements rule out considerable variation of μ on a short time scale but do not exclude its changes over the cosmological scale, $\sim 10^{10}$ years. Moreover, one can not reject the possibility that μ (as well as other constants) could be different in widely separated regions of the Universe.

The method used here to constrain the possible variations of μ was proposed by Varshalovich & Levshakov (1993). It is based on the fact that wavelengths of electron-vibro-rotational lines depend on the reduced mass of the molecule, with the dependence being different for different transitions. It enables us to distinguish the cosmological redshift of a line from the shift caused by a possible variation of μ .

Thus, the measured wavelength λ_i of a line formed in the absorption system at the redshift z_{abs} can be written as

$$\lambda_i = \lambda_i^0 (1 + z_{\text{abs}})(1 + K_i \Delta\mu/\mu) \quad (1)$$

where λ_i^0 is the laboratory (vacuum) wavelength of the transition, and $K_i = d \ln \lambda_i^0 / d \ln \mu$ is the sensitivity coefficient calculated for the Lyman and Werner bands of molecular hydrogen in work (Varshalovich & Potekhin 1995). This expression can be represented in terms of the individual line redshift $z_i \equiv \lambda_i / \lambda_i^0 - 1$ as

$$z_i = z_{\text{abs}} + b K_i \quad (2)$$

where $b = (1 + z_{\text{abs}})\Delta\mu/\mu$. Note, in case of nonzero $\Delta\mu/\mu$, z_{abs} is not equal to the standard mean value $\bar{z} = (\sum z_i)/N$.

In reality, z_i is measured with some uncertainty which is caused by statistical errors of the astronomical measurements λ_i , by errors of the laboratory measurements of λ_i^0 , and by possible systematic errors. Nevertheless, if $\Delta\mu/\mu$ is nonzero, there must be a correlation between z_i and K_i values. Thus, a linear regression analysis of these quantities yields z_{abs} and b (as well as their statistical significance), consequently an estimate of $\Delta\mu/\mu$.

Previous studies have already yielded tight upper limits on μ -variations, $|\Delta\mu/\mu| < 7 \times 10^{-4}$ (Cowie & Songaila 1995), $|\Delta\mu/\mu| < 2 \times 10^{-4}$ (Potekhin et al. 1998), $|\Delta\mu/\mu| < 5.7 \times 10^{-5}$ (Levshakov et al. 2002a), and $\Delta\mu/\mu = (3.0 \pm 2.4) \times 10^{-5}$ (Ivanchik et al. 2003). Using new laboratory measurements of H_2 wavelengths (Philip et al. 2004) and previous qso data, Ubachs & Reinhold (2004) found $\Delta\mu/\mu = (-0.5 \pm 1.8) \times 10^{-5}$.

3. Observations

We used the UVES echelle spectrograph mounted on the Very Large Telescope of the European Southern Observatory to obtain new and better quality data (compared to what was available in the UVES data base) on two high-redshift ($z_{\text{em}} = 3.22$ and 3.02) bright quasars, respectively Q 0347–383 and Q 0405–443. Nine exposures of 1.5 h each were taken for each of the quasars over six nights under sub-arcsec seeing conditions in January 2002 and 2003 for, respectively, Q 0347–383 and Q 0405–443. The slit was 0.8 arcsec wide resulting in a resolution of $R \sim 53\,000$ over the wavelength range 3290–4515 Å. Thorium-Argon calibration data were taken with different slit widths (from 0.8 to 1.4 arcsec) before and after each exposure and data reduction was performed using these different calibration settings to ensure accurate wavelength calibration. Spectra were extracted using procedures implemented in MIDAS, the ESO data reduction package. The reduction is particularly robust as only one CCD is used for the observations (setting #390). We have extracted the lamp spectra in the same way as the science spectra and checked that there is no systematic shift in the position of the emission lines.

Possible systematic effects leading to wavelength mis-calibration have been discussed by Murphy et al. (2001) and we specify here a few technical points. The wavelength calibration has been extensively checked using ThAr lamps. Errors measured from the lamp spectra are typically ~ 2 mÅ. Air-vacuum wavelength conversion has been made using the Edlén (1966) formula at 15°C. A shift in the wavelength scale can be introduced if the Thorium-Argon lamp and the science spectra are taken at systematically different temperatures and pressures. This is not the case here as calibration spectra were taken just before and after the science exposures. The temperature variations measured over one night in UVES are smaller than 0.5 K (see Dekker et al. 2000). Heliocentric correction is done using Stumpff (1980) formula. In addition, all exposures were taken with the slit aligned with the parallactic angle so that atmospheric dispersion has little effect on our measurements. Therefore, as discussed by Murphy et al. (2001), uncertainties due to these effects are negligible.

4. Data analysis

In each of the quasar spectra there is a damped Lyman- α system in which H_2 has been well studied, at $z_{\text{abs}} = 3.0249$ (Levshakov et al. 2002b; Ledoux et al. 2003), and 2.5947 (Ledoux et al. 2003) for Q 0347–383 and Q 0405–443, respectively. A crucial advantage of these H_2 absorption systems is that numerous unsaturated lines with narrow simple profiles are seen. A single component profile is sufficient to fit the lines on the line of sight toward Q 0347–383 and profiles of two well separated ($\Delta V = 13$ km s $^{-1}$) components are fitted in the case of Q 0405–443. The absorption lines are shown in Figs. 1 and 2 for the two quasars respectively. For the latter object, we fitted the two components but discuss only the positions of the strongest one in the following.

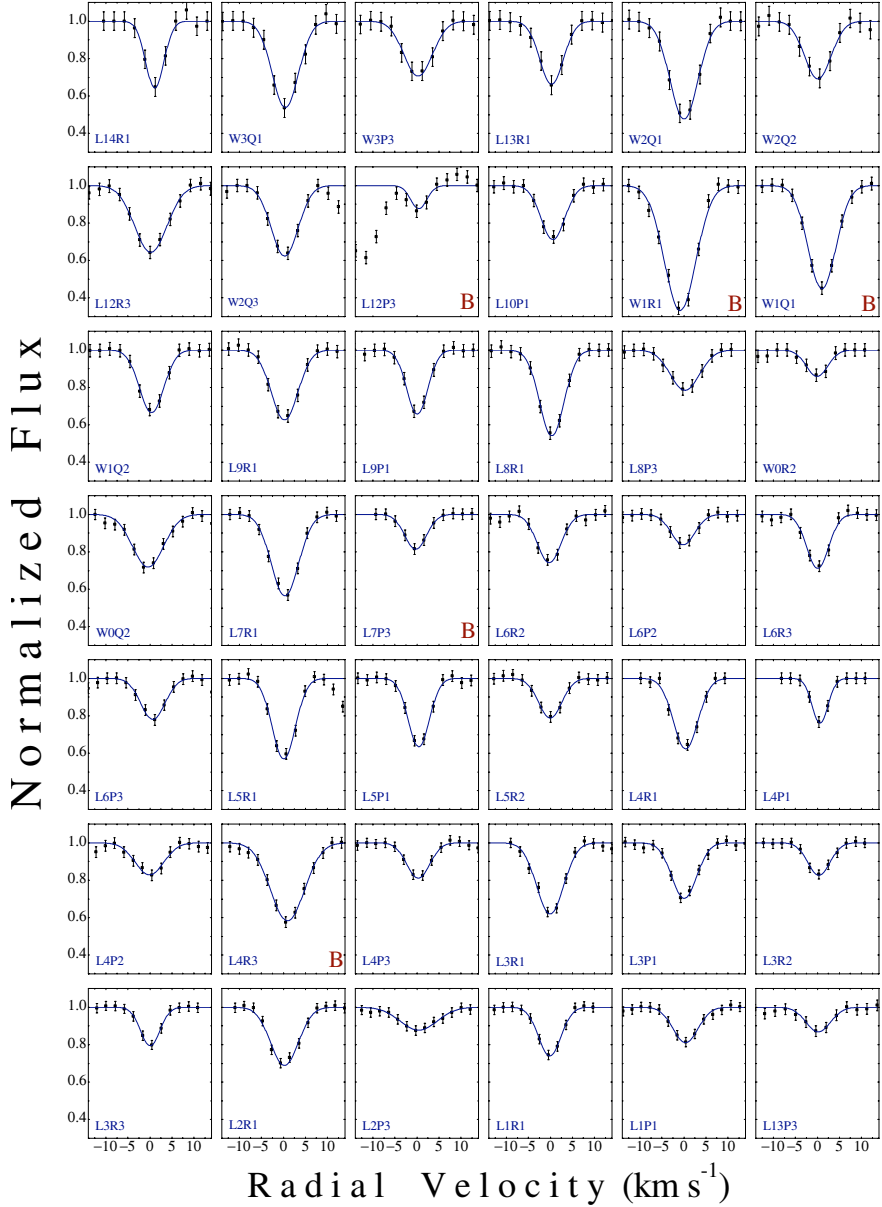


Fig. 1. Profiles of selected H_2 lines in the absorption system toward Q 0347–383. The letter “B” marks lines which have a good profile but do not satisfy the selection criteria (see Sect. 4, and Fig. 3). The zero point of the radial velocity corresponds to the redshift $z_{\text{abs}} = 3.0249$.

4.1. Selection of lines

We selected H_2 lines that are not obviously blended with other narrow absorptions, in particular H I intervening Lyman- α lines, and that have normalized central intensities larger than 0.1 and smaller than 0.9. The 82 selected lines (42 toward Q 0347–383 and 40 toward Q 0405–443) were fitted with Voigt profiles estimating the continuum locally. Possible hidden inaccuracy or problems related to individual lines (inaccurate continuum determination, possible non-obvious blends, etc.) were checked by constructing curves of growth for the two sets of molecular lines (Fig. 3). For this, we plot $\log(W/\lambda)$ versus $\log(\lambda fN)$ for the lines observed along both lines of sight (see Fig. 3) together with theoretical curves corresponding to Doppler parameters $b = 1.7, 1.5, 1.3,$ and 1.1 km s^{-1} . It is apparent from the figure that 5 lines toward Q 0347–383 and one

line toward Q 0405–443 do not lie on the theoretical curves. This is probably a consequence of blending with other lines in the Lyman- α forest and/or difficulties in positioning the continuum as illustrated for three of these lines in the top panels of Fig. 3. The six lines are marked with a sign “B” in Figs. 1 and 2 and are not considered in the following analysis which is therefore based on 76 lines (37 toward Q 0347–383 and 39 toward Q 0405–443).

For the selected lines, the curves of growth analysis gives the column density (for each rotational level), $N_J [\text{cm}^{-2}]$, and the Doppler parameter b . For the Q 0405–443 absorption system, $\log N_{J=1} = 17.7 \pm 0.2$, $\log N_{J=2} = 15.9 \pm 0.3$, $\log N_{J=3} = 14.7 \pm 0.3$, and $b = 1.4 \pm 0.3 \text{ km s}^{-1}$. For the Q 0347–383 absorption system $\log N_{J=1} = 14.3 \pm 0.2$, $\log N_{J=2} = 13.8 \pm 0.2$, $\log N_{J=3} = 14.0 \pm 0.2$, and $b = 1.3 \pm 0.2 \text{ km s}^{-1}$.

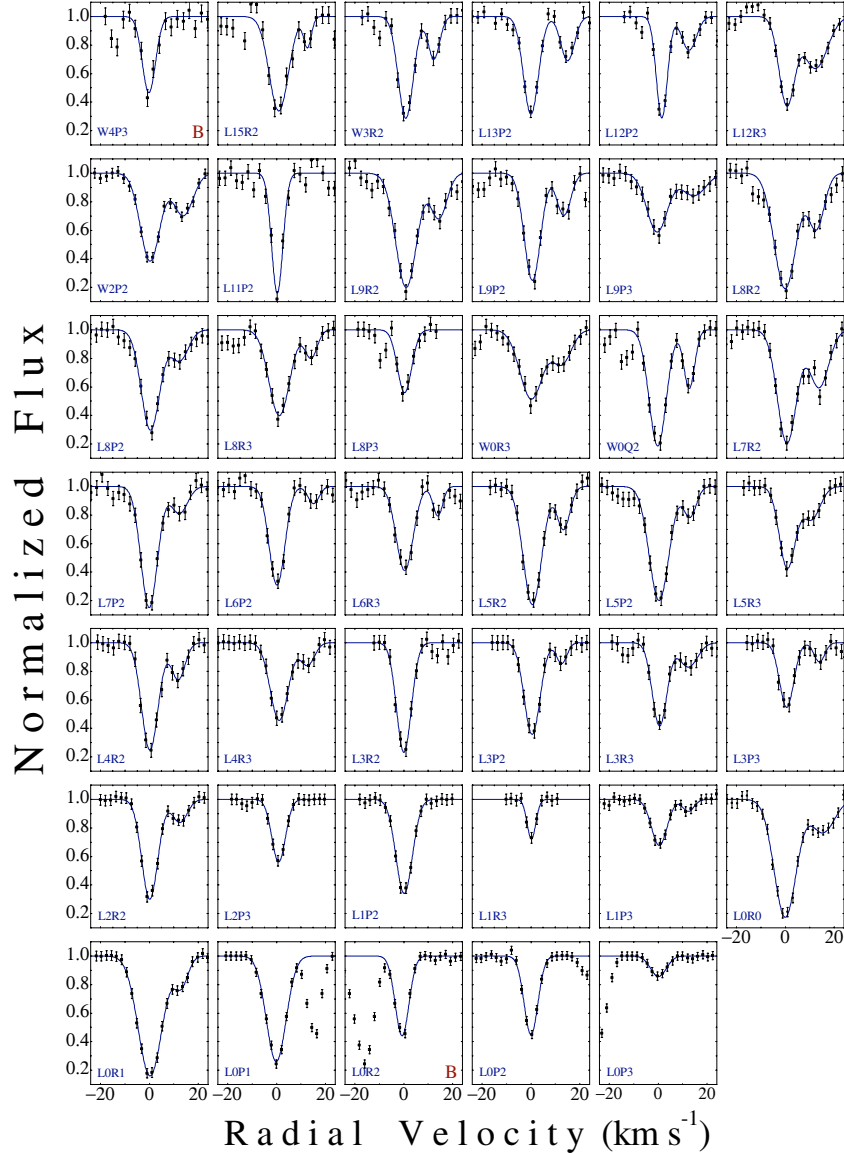


Fig. 2. Profiles of selected H_2 lines in the absorption system toward Q 0405–443. The letter “B” marks lines which have a good profile but do not satisfy the selection criteria (see Sect. 4, and Fig. 3). The zero point of the radial velocity corresponds to the redshift $z_{\text{abs}} = 2.5947$.

4.2. Line parameters

The atomic parameters of the selected lines are given in Tables 1 and 2. The first column specifies the lines. The second one gives the sensitivity coefficients K_i . The 3rd and 4th columns present the observed wavelengths and their errors, λ_i and σ_{λ_i} . The 5th and 6th columns give the rest wavelengths, λ_i^{lab} , as estimated in different laboratory experiments. The first estimate (called λ_i^{a}) is obtained using level energies (Jennings et al. 1984; Dabrowski 1984; Abgrall et al. 1993; Roncin & Launay 1994) determined from laboratory observations of the H_2 emission spectrum. Uncertainties for the ground state energies are less than $3 \times 10^{-4} \text{ cm}^{-1}$ (Jennings et al. 1984). Uncertainties are more difficult to estimate for the upper levels although close to 0.1 cm^{-1} (Dabrowski 1984) for most of the lines. This means that most of the errors are of the same order of magnitude as our observational measurements, $1 \text{ m}\text{\AA}$ in the rest frame (or about 3 to 4 $\text{m}\text{\AA}$ for the observer). The second

estimate (called λ_i^{p}) is a direct measurement using a narrow-band tunable extreme UV laser source (Philip et al. 2004). This experiment is supposed to be much more precise and errors should be less than 0.011 cm^{-1} .

Observational errors (σ_{λ_i}) are of the order of $3 \text{ m}\text{\AA}$, they characterize only the accuracy of the profile fitting of the observed lines by Gaussian profiles. The total error of the line centre position can be estimate from the real dispersion of points (e.g. Fig. 5.) $\sigma_{\lambda_i} \lesssim \lambda_i^{\text{lab}} \sigma_{z_i} \approx 5 \text{ m}\text{\AA}$.

4.3. Consistency of the two lines of sight

An important internal check of the data quality consists in comparing measurements of the eight lines present in both QSO spectra. This is done in Fig. 4 where the relative positions, $\zeta_i = (z_i^{\text{obs}} - \bar{z}) / (1 + \bar{z})$, is plotted versus K_i ; \bar{z} being the median redshift (i.e. model independent) of all H_2 lines observed

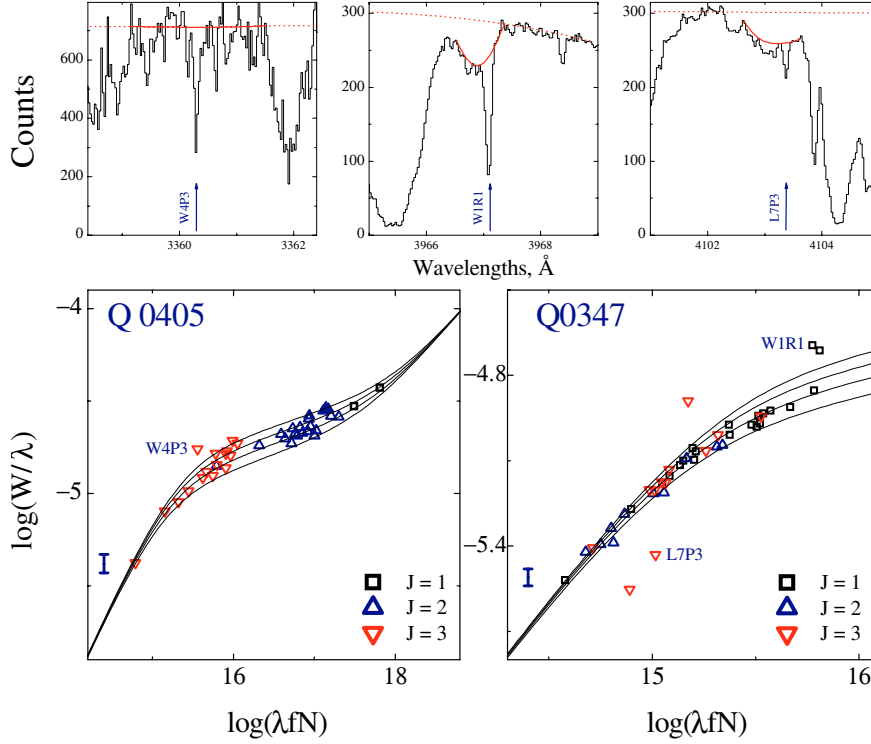


Fig. 3. Curves of growth for the observed absorption lines (bottom panels; $\lambda[\text{\AA}], N[\text{cm}^{-2}]$). The three top panels illustrate the procedure we use to fix the local continuum (solid bold line). The equivalent widths for the W4P3 and W1R1 lines (first and second top panels) lie above the corresponding curves of growth. It means that the lines are probably blended. The equivalent widths for L7P3 line (third top panel) lies under the curve of growth. It means that the real continuum (dash line) probably lies above the local one. In the analysis, we do not use these lines as well as other lines that are not on the curve of growth. (The error bars on the bottom panels show typical errors for the plotted points).

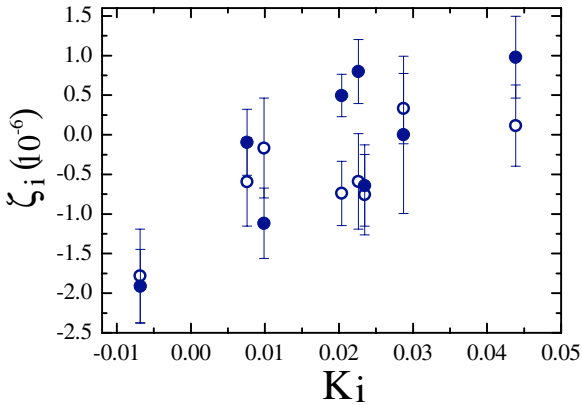


Fig. 4. The relative positions, $\zeta_i = (z_i - \bar{z})/(1 + \bar{z})$, of lines observed in the spectra of both quasars Q 0405–443 (filled circles) and Q 0347–383 (open circles) are plotted versus the sensitivity coefficient K_i . Here, \bar{z} is the median redshift of all H_2 lines observed in the one corresponding spectrum. The lines are L3R3, L3R2, L5R2, L6R3, L6P2, W0Q2, L8P3, and L12R3 and $\lambda_{\text{lab}}^{\text{a}}$ are used. The 1σ error bars shown are observational (without laboratory errors). They are of the order of 3 mÅ (in the observer’s frame). It can be seen that both sets of measurements are mutually consistent within observational errors. The fact that the two independent observational measurements agree well indicates that our data calibration and measurement procedure are reliable at the level required for the study.

in one spectrum. It can be seen that all measurements are within observational errors (at the 2σ level). As the two lines of sight

have been observed and reduced independently, this shows that the data calibration and the measurement procedure are reliable at the level required for the study.

5. Results

In Fig. 5 we plot z_i versus K_i for absorption lines observed in the spectra of Q 0347–383 (open circles) and Q 0405–443 (filled circles) respectively. The left hand side panels corresponds to rest-wavelengths $\lambda_{\text{lab}}^{\text{a}}$ and the right hand side panel to rest-wavelengths $\lambda_{\text{lab}}^{\text{p}}$. The best fit of the linear regression z_i -to- K_i in accordance with Eq. (2) is overplotted in all panels.

For the left hand side panels, error bars are the combination of measurement errors (evaluated from Col. 5 of Tables 1 and 2) with an error of 1 mÅ, in the rest frame, to account for uncertainties in laboratory wavelength determination. For the right hand side panels, uncertainties in laboratory wavelength determination are supposed to be of the order of 0.1 mÅ.

Data for both quasars are combined in the bottom panels using the following formula for reduced redshift ζ_i :

$$\zeta_i = \frac{z_i^{\text{obs}} - z_{\text{abs}}}{1 + z_{\text{abs}}}. \quad (3)$$

In this formula, z_{abs} is obtained from the best linear fit of the data in accordance with Eq. (2). They are $z_{\text{abs}} = 3.02489904(120)$ for Q 0347–383 and $z_{\text{abs}} = 2.59473315(81)$ for Q 0405–443.

Table 1. Parameters of H₂ lines for the absorption system at $z = 3.02490$ in the spectrum of Q 0347–383.

| Lines | K_i | $\lambda_i, \text{\AA}$ | $\sigma_{\lambda_i}, \text{\AA}$ | $\lambda_i^a, \text{\AA}$ | $\lambda_i^b, \text{\AA}$ |
|-------|----------|-------------------------|----------------------------------|---------------------------|---------------------------|
| L14R1 | 0.05495 | 3811.506 | 0.0025 | 946.9795 | 946.98040 |
| W3Q1 | 0.02176 | 3813.279 | 0.0022 | 947.4212 | 947.42188 |
| W3P3 | 0.01724 | 3830.382 | 0.0023 | 951.6711 | 951.67186 |
| L13R1 | 0.05109 | 3844.044 | 0.0024 | 955.0649 | 955.06582 |
| L13P3 | 0.04574 | 3865.717 | 0.0027 | 960.4497 | 960.45063 |
| W2Q1 | 0.01423 | 3888.435 | 0.0013 | 966.0951 | 966.09608 |
| W2Q2 | 0.01301 | 3893.205 | 0.0020 | 967.2800 | 967.28110 |
| L12R3 | 0.04386 | 3894.800 | 0.0020 | 967.6758 | 967.67695 |
| W2Q3 | 0.01120 | 3900.325 | 0.0015 | 969.0481 | 969.04922 |
| L10P1 | 0.04053 | 3955.815 | 0.0017 | 982.8339 | 982.83533 |
| W1Q2 | 0.00394 | 3976.499 | 0.0035 | 987.9743 | 987.97445 |
| L9R1 | 0.03796 | 3992.767 | 0.0017 | 992.0156 | 992.01637 |
| L9P1 | 0.03719 | 3995.960 | 0.0010 | 992.8093 | 992.80968 |
| L8R1 | 0.03444 | 4034.769 | 0.0008 | 1002.4509 | 1002.45210 |
| L8P3 | 0.02872 | 4058.651 | 0.0018 | 1008.3849 | 1008.38615 |
| W0R2 | -0.00503 | 4061.220 | 0.0030 | 1009.0244 | 1009.02492 |
| W0Q2 | -0.00686 | 4068.922 | 0.0024 | 1010.9389 | 1010.93844 |
| L7R1 | 0.03062 | 4078.983 | 0.0017 | 1013.4364 | 1013.43701 |
| L6R2 | 0.02496 | 4131.669 | 0.0028 | 1026.5281 | – |
| L6P2 | 0.02347 | 4138.020 | 0.0021 | 1028.1055 | 1028.10609 |
| L6R3 | 0.02262 | 4141.563 | 0.0025 | 1028.9856 | – |
| L6P3 | 0.02053 | 4150.451 | 0.0014 | 1031.1917 | 1031.19260 |
| L5R1 | 0.02183 | 4174.421 | 0.0020 | 1037.1490 | 1037.14992 |
| L5P1 | 0.02088 | 4178.483 | 0.0015 | 1038.1568 | 1038.15713 |
| L5R2 | 0.02038 | 4180.622 | 0.0017 | 1038.6901 | 1038.69027 |
| L4R1 | 0.01681 | 4225.987 | 0.0026 | 1049.9592 | 1049.95976 |
| L4P1 | 0.01580 | 4230.303 | 0.0025 | 1051.0317 | 1051.03253 |
| L4P2 | 0.01369 | 4239.360 | 0.0040 | 1053.2841 | 1053.28426 |
| L4P3 | 0.01071 | 4252.193 | 0.0010 | 1056.4709 | 1056.47143 |
| L3R1 | 0.01132 | 4280.316 | 0.0020 | 1063.4594 | 1063.46014 |
| L3P1 | 0.01026 | 4284.928 | 0.0015 | 1064.6048 | 1064.60539 |
| L3R2 | 0.00989 | 4286.499 | 0.0027 | 1064.9950 | 1064.99481 |
| L3R3 | 0.00758 | 4296.491 | 0.0024 | 1067.4780 | 1067.47855 |
| L2R1 | 0.00535 | 4337.628 | 0.0025 | 1077.6979 | 1077.69894 |
| L2P3 | -0.00098 | 4365.242 | 0.0027 | 1084.5593 | 1084.56034 |
| L1R1 | -0.00113 | 4398.132 | 0.0015 | 1092.7316 | – |
| L1P1 | -0.00234 | 4403.449 | 0.0030 | 1094.0516 | – |

^a H₂ laboratory wavelengths are from (Jennings et al. 1984; Dabrowski 1984; Abgrall et al. 1993; Roncin & Launay 1994).

^b H₂ laboratory wavelengths are from (Philip et al. 2004).

The results of the linear regression analysis are presented in Table 3. The first column gives the QSO name, the second one gives the number of lines used in the regression analysis, the third column gives the estimated value of $\Delta\mu/\mu$. Estimates of $\Delta\mu/\mu$ are given using the two sets of rest wavelengths for both quasars separately as well as for the combined sample. Most of the lines are from $J = 1$ for Q 0347–383 and $J = 2$ for Q 0405–443 and the results of the regression analysis for these two subsamples are also given. Note that the number of lines is smaller in the case where λ_{lab}^p are used because not all the lines have been measured.

Systematic effects in measurements of the central position of a line profile were discussed by Ivanchik et al. (1999) and in more detail by Murphy et al. (2001). Here we discuss two possible sources of systematic errors more specifically.

The first one may be called the kinematic effect. Due to peculiar structure in the clouds H₂ molecular features from different rotational levels $J = 0, 1, 2, 3, \dots$ may not be produced in the same region of the absorbing cloud and therefore may have different mean observed velocities (e.g. Jenkins & Peimbert 1997). This could lead to relative shifts between the common redshifts derived for lines from different rotational levels J . This is illustrated in Fig. 6. The top left panel shows the ideal

Table 2. Parameters of H₂ lines for the absorption system at $z = 2.59473$ in the spectrum of Q 0405–443.

| Lines | K_i | $\lambda_i, \text{\AA}$ | $\sigma_{\lambda_i}, \text{\AA}$ | $\lambda_i^a, \text{\AA}$ | $\lambda_i^b, \text{\AA}$ |
|-------|----------|-------------------------|----------------------------------|---------------------------|---------------------------|
| L15R2 | 0.05816 | 3381.302 | 0.0030 | 940.6257 | – |
| W3R2 | 0.02193 | 3404.619 | 0.0019 | 947.1116 | 947.11169 |
| L13P2 | 0.04848 | 3442.500 | 0.0025 | 957.6516 | 957.65223 |
| L12P2 | 0.04503 | 3473.513 | 0.0023 | 966.2751 | 966.27550 |
| L12R3 | 0.04386 | 3478.541 | 0.0018 | 967.6758 | 967.67695 |
| W2P2 | 0.01198 | 3480.759 | 0.0015 | 968.2943 | 968.29522 |
| L11P2 | 0.04177 | 3506.107 | 0.0023 | 975.3454 | 975.34576 |
| L9R2 | 0.03647 | 3571.558 | 0.0018 | 993.5505 | 993.55061 |
| L9P2 | 0.03519 | 3576.309 | 0.0022 | 994.8735 | 994.87408 |
| L9P3 | 0.03232 | 3586.919 | 0.0035 | 997.8264 | 997.82717 |
| L8R2 | 0.03296 | 3609.057 | 0.0034 | 1003.9851 | 1003.98545 |
| L8P2 | 0.03161 | 3614.121 | 0.0025 | 1005.3923 | 1005.39320 |
| L8R3 | 0.03061 | 3617.795 | 0.0018 | 1006.4130 | 1006.41416 |
| L8P3 | 0.02872 | 3624.876 | 0.0036 | 1008.3849 | 1008.38615 |
| W0R3 | -0.00617 | 3631.147 | 0.0025 | 1010.1304 | 1010.13025 |
| W0Q2 | -0.00682 | 3634.050 | 0.0017 | 1010.9389 | 1010.93844 |
| L7R2 | 0.02914 | 3648.575 | 0.0025 | 1014.9767 | 1014.97685 |
| L7P2 | 0.02772 | 3653.904 | 0.0024 | 1016.4612 | 1016.46125 |
| L6P2 | 0.02347 | 3695.764 | 0.0019 | 1028.1056 | 1028.10609 |
| L6R3 | 0.02262 | 3698.933 | 0.0015 | 1028.9856 | – |
| L5R2 | 0.02038 | 3733.817 | 0.0010 | 1038.6901 | 1038.69027 |
| L5P2 | 0.01880 | 3739.844 | 0.0010 | 1040.3672 | 1040.36732 |
| L5R3 | 0.01805 | 3742.691 | 0.0017 | 1041.1583 | 1041.15892 |
| L4R2 | 0.01536 | 3779.856 | 0.0021 | 1051.4988 | 1051.49857 |
| L4R3 | 0.01304 | 3788.770 | 0.0015 | 1053.9753 | 1053.97610 |
| L3R2 | 0.00989 | 3828.370 | 0.0017 | 1064.9950 | 1064.99481 |
| L3P2 | 0.00812 | 3835.227 | 0.0020 | 1066.9006 | 1066.90068 |
| L3R3 | 0.00758 | 3837.300 | 0.0016 | 1067.4781 | 1067.47855 |
| L3P3 | 0.00511 | 3846.871 | 0.0023 | 1070.1401 | 1070.14087 |
| L2R2 | 0.00394 | 3879.528 | 0.0021 | 1079.2259 | 1079.22491 |
| L2P3 | -0.00098 | 3898.707 | 0.0024 | 1084.5593 | 1084.56034 |
| L1P2 | -0.00453 | 3941.405 | 0.0020 | 1096.4390 | – |
| L1R3 | -0.00479 | 3942.435 | 0.0029 | 1096.7246 | – |
| L1P3 | -0.00760 | 3953.441 | 0.0014 | 1099.7864 | – |
| L0R0 | -0.00772 | 3983.420 | 0.0020 | 1108.1277 | – |
| L0R1 | -0.00818 | 3985.240 | 0.0018 | 1108.6328 | – |
| L0P1 | -0.00948 | 3990.370 | 0.0020 | 1110.0617 | – |
| L0P2 | -0.01170 | 3999.123 | 0.0013 | 1112.4963 | – |
| L0R3 | -0.01178 | 3999.437 | 0.0020 | 1112.5830 | – |

^a H₂ laboratory wavelengths are from (Jennings et al. 1984; Dabrowski 1984; Abgrall et al. 1993; Roncin & Launay 1994).

^b H₂ laboratory wavelengths are from (Philip et al. 2004).

Table 3. $\Delta\mu/\mu$ estimates from different samples.

| | N. of L. | $\Delta\mu/\mu$ |
|------------------------|----------|----------------------------------|
| Set (A) | | |
| Q 0347–383 | 37 | $(3.03 \pm 1.22) \times 10^{-5}$ |
| Q 0347–383 ($J = 1$) | 18 | $(3.23 \pm 1.63) \times 10^{-5}$ |
| Q 0405–443 | 39 | $(3.07 \pm 0.97) \times 10^{-5}$ |
| Q 0405–443 ($J = 2$) | 22 | $(3.78 \pm 1.36) \times 10^{-5}$ |
| 2 QSO | 76 | $(3.05 \pm 0.75) \times 10^{-5}$ |
| Set (P) | | |
| Q 0347–383 | 33 | $(1.47 \pm 0.83) \times 10^{-5}$ |
| Q 0405–443 | 29 | $(2.11 \pm 1.39) \times 10^{-5}$ |
| 2 QSO | 62 | $(1.65 \pm 0.74) \times 10^{-5}$ |

z - K_i relation (for $\Delta\mu = 0$) for a sample of $J = 1, 2, 3$ lines corresponding to the lines observed toward Q 0347–383 for

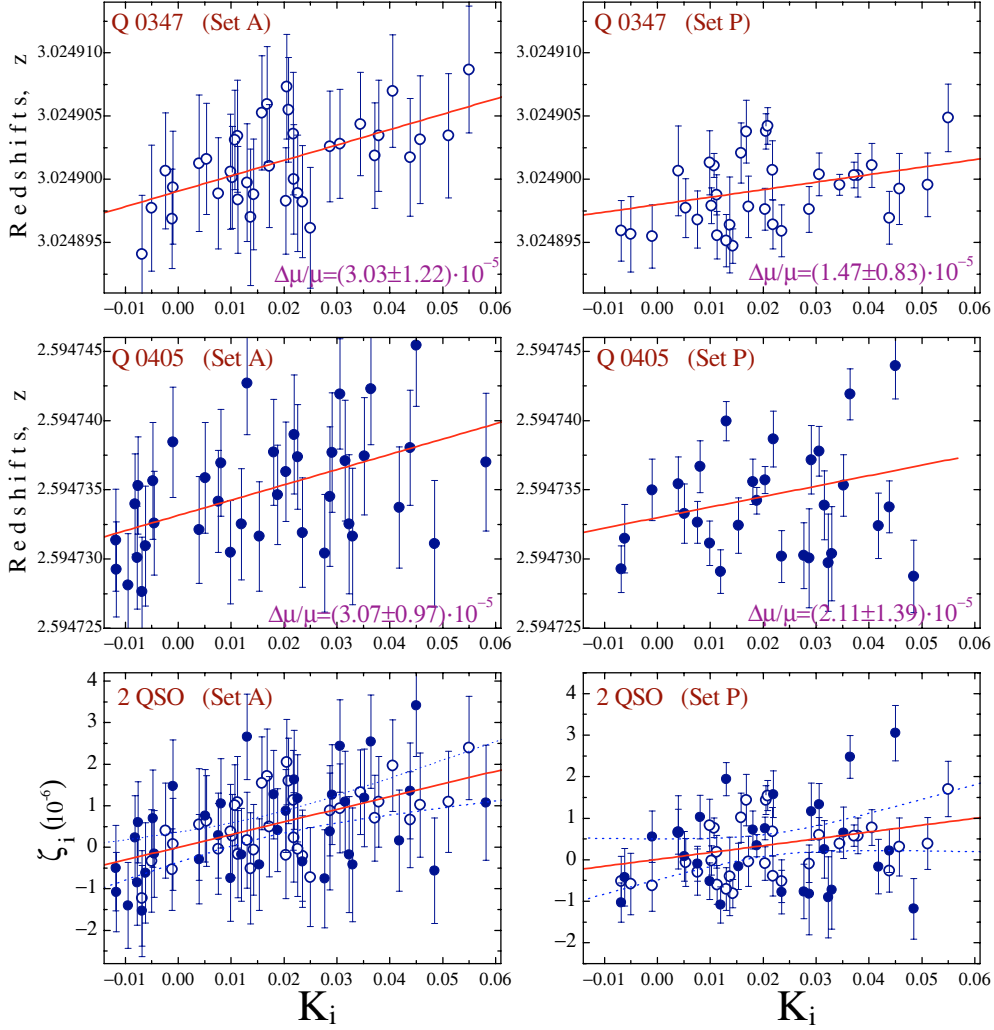


Fig. 5. Regression analysis using rest wavelengths from energy levels (Sample A; *left column*) and from laser experiments (Sample P; *right column*) for both quasars (*top and middle rows*) and the whole sample (*bottom row*).

which we have imposed a shift of 0.5 km s^{-1} between different J levels. This effect could mimic μ -variation if ranges of K_i for different J levels do not overlap. The observed situation is shown in the top-right panel of the same figure. In that case, the overlap between K_i ranges for $J = 1$ and $J = 3$ lines is important enough so that the correlation cannot be due to this effect. Moreover, most of the lines (18 out of 37) are from the $J = 1$ level and the linear regression analysis for these lines only gives a $\Delta\mu/\mu$ value similar to what is derived from the whole sample (see Table 3).

Another systematic error could be produced by any effect producing a shift monotonically increasing with increasing wavelength. This could be a consequence of slightly unprecise Th-Ar calibration or air-vacuum wavelength conversion, or atmospheric dispersion effects, instrumental profile variation etc. (Murphy et al. 2001). Indeed, there is a well-known correlation between K_i and λ_0 . Such effects could lead to a slope in the regression line, i.e. mimic μ -variation. This is illustrated in the bottom-left panel of Fig. 6 where such an ideal artificial effect has been applied to the sample of lines seen toward Q 0347–383. It can be seen however that the Werner and Lyman-band lines have different locations in the plane. The

reason is that for the same K_i coefficient, the Werner lines have larger λ_0 . It is apparent from the observed sample (bottom-right panel) that there is no such shift.

6. Conclusion

Using 76 H_2 absorption lines observed at $z_{\text{abs}} = 2.59473$ and 3.02490 in the spectra of two quasars, respectively, Q 0405–443 and Q 0347–383, we have searched for any correlation between the relative positions of H_2 absorption lines measured as $\zeta_i = (z_i - \bar{z})/(1 + \bar{z})$ and the sensitivity coefficients K_i of the lines to a change in μ . A positive correlation could be interpreted as a variation of the proton-to-electron mass ratio, $\Delta\mu/\mu$. We use two sets of rest wavelengths as estimated from different laboratory experiments. Wavelengths derived from energy level determination give $\Delta\mu/\mu = (3.05 \pm 0.75) \times 10^{-5}$, over the past ~ 12 Gyr. However, wavelengths derived from a direct and, in principle, more precise determination using laser techniques give $\Delta\mu/\mu = (1.64 \pm 0.74) \times 10^{-5}$. The latter limit is the most stringent limit obtained to date now on the variation of this fundamental constant. This limit, together with the limit on $\Delta\alpha/\alpha$, yields an estimate of the R parameter defined as

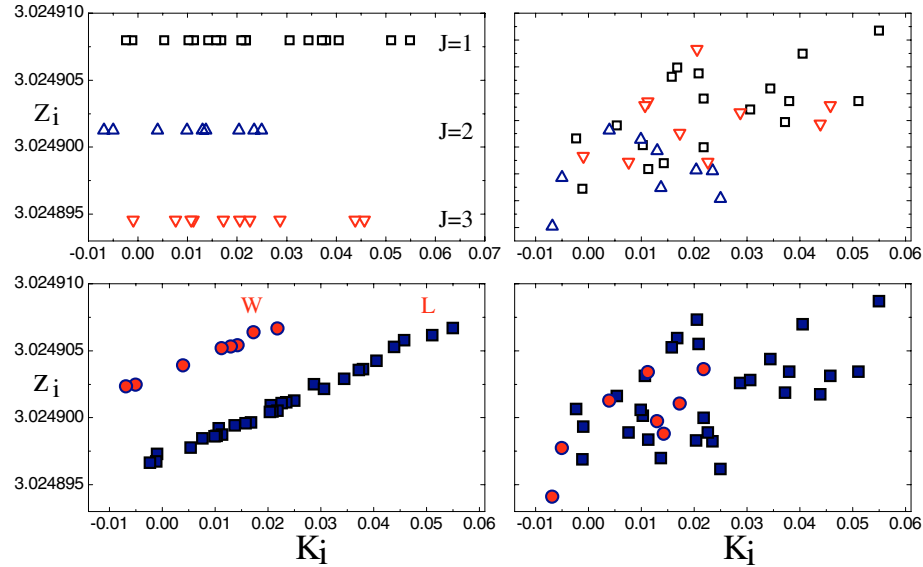


Fig. 6. Possible systematic effects. *The left top panel* illustrates the kinematic effect that could arise if absorption lines from different rotational levels J had different velocity positions in the spectrum (Jenkins & Peimbert 1997). It may mimic μ -variation if ranges of K_i for different J levels do not overlap. The observed situation is shown in *the right top panel*. The K_i ranges for $J = 1$ and $J = 3$ overlap enough and slopes are similar for each J levels within the statistical uncertainties. The second type of systematic error could be a consequence of any effect that could produce a shift increasing monotonously with wavelength: H_2 laboratory wavelengths, and/or Th-Ar calibration, air-vacuum wavelength conversion, atmospheric dispersion effects, instrumental profile variation with λ etc. (Murphy et al. 2001). In that case, the regression lines for Lyman and Werner bands should be shifted from one to the other (*bottom left panel*). It is apparent from the observation (*bottom right panel*) that such an effect cannot be the dominant source of the correlation.

$\Delta\mu/\mu \approx R\Delta\alpha/\alpha$. Using $\Delta\alpha/\alpha$ from Murphy et al. (2003) gives $-9.5 \leq R \leq -0.2$, and $\Delta\alpha/\alpha$ from Chand et al. (2004) gives $|R| > 1$ (at the 2σ C.L.).

Acknowledgements. We thank F. Roncin, H. Abgrall, E. Roueff for useful discussions, and S. A. Levshakov for useful remarks. P.P.J. and R.S. gratefully acknowledge support from the Indo-French Centre for the Promotion of Advanced Research (Centre Franco-Indien pour la Promotion de la Recherche Avancée) under contract No. 3004-A. A.I. and D.V. are grateful for the support by the RFBR grant (03-07-90200) and the grant of Leading scientific schools (NSh-1115.2003.2).

References

- Abgrall, H., Roueff, E., Launay, F., Roncin, J.-Y., & Subtil, J.-L. 1993, *J. Mol. Spec.*, 157, 512
- Calmet, X., & Fritzsche, H. 2002, *Eur. Phys. J. C*, 24, 639
- Chand, H., Srianand, R., Petitjean, P., & Aracil, B. 2004, *A&A*, 417, 853
- Cowie, L., & Songaila, A. 1995, *ApJ*, 453, 596
- Dabrowski, I. 1984, *Can. J. Phys.*, 62, 1639
- Dekker, H., D’Odorico, S., Kaufer, A., Delabre, B., & Kotzlowski, H. 2000, *SPIE*, 4008, 534
- Dent, T., & Fairbairn, M. 2003, *Nucl. Phys. B*, 653, 256
- Dine, M., Nir, Y., Raz, G., & Volansky, T. 2003, *Phys. Rev. D*, 67, 015009
- Dzuba, V., Flambaum, V., & Webb, J. 1999, *Phys. Rev. A*, 59, 230
- Edlén, B. 1966, *Metrologia*, 2, 71
- Ivanchik, A., Potekhin, A., & Varshalovich, D. 1999, *A&A*, 343, 439
- Ivanchik, A., Petitjean, P., Rodriguez, E., & Varshalovich, D. 2003, *Astrophys. Space Sci.*, 283, 583
- Jenkins, E. B., & Peimbert, A. 1997, *ApJ*, 477, 265
- Jennings, D. E., Bragg, S. L., & Brault, J. W. 1984, *ApJ*, 282, L85
- Langacker, P., Segre, G., & Strassler, M. 2002, *Phys. Lett. B*, 528, 121
- Ledoux, C., Petitjean, P., & Srianand, R. 2003, *MNRAS*, 346, 209
- Levshakov, S., Dessauges-Zavadsky, M., D’Odorico, S., & Molaro, P. 2002a, *MNRAS*, 333, 373
- Levshakov, S., Dessauges-Zavadsky, M., D’Odorico, S., & Molaro, P. 2002b, *ApJ*, 565, 696
- Mohr, P. J., & Taylor, B. N. 2002, *CODATA Recommended Values of the Fundamental Physical Constants: 2002*, in press, <http://physics.nist.gov/>
- Murphy, M., Webb, J., Flambaum, V., Churchill, C., & Prochaska, J. 2001, *MNRAS*, 327, 1223
- Murphy, M., Webb, J., & Flambaum, V. 2003, *MNRAS*, 345, 609
- Olive, K.A., Pospelov, M., Qian, Y.-Z., et al. 2002, *Phys. Rev. D*, 66, 045022
- Philip, J., Sprengers, J. P., Pielage, Th., et al. 2004, *Can. J. Chem.*, 82, 713
- Potekhin, A., Ivanchik, A., Varshalovich, D., et al. 1998, *ApJ*, 505, 523
- Quast, R., Reimers, D., & Levshakov, S. 2004, *A&A*, 415, L7
- Roncin, J.-Y., & Launay, F. 1994, *J. Phys. Chem. Ref. Data*, No. 4
- Srianand, R., Chand, H., Petitjean, P., & Aracil, B. 2004, *PRL*, 92, 121302
- Stumpff, P. 1980, *A&AS*, 41, 1
- Ubachs, W., & Reinhold, E. 2004, *PRL*, 92, 101302
- Varshalovich, D., & Levshakov, S. 1993, *JETP Lett.*, 58, 231
- Varshalovich, D., & Potekhin, A. 1995, *Space Sci. Rev.*, 74, 259
- Webb, J., Flambaum, V., Churchill, C., Drinkwater, M., & Barrow, J. 1999, *Phys. Rev. Lett.*, 82, 884