



HAL
open science

Unexpected morphological diversity in ancient dogs compared to modern relatives

Colline Brassard, Adrian Bălăşescu, Rose-Marie Arbogast, Vianney Forest,
Céline Bemilli, Adina Boroneanţ, Fabien Convertini, Muriel Gandelin,
Valentin Radu, Patricia Fleming, et al.

► To cite this version:

Colline Brassard, Adrian Bălăşescu, Rose-Marie Arbogast, Vianney Forest, Céline Bemilli, et al..
Unexpected morphological diversity in ancient dogs compared to modern relatives. Proceedings of
the Royal Society B: Biological Sciences, 2022, 289 (1975), pp.20220147. 10.1098/rspb.2022.0147 .
hal-03784704

HAL Id: hal-03784704

<https://hal.science/hal-03784704>

Submitted on 22 Feb 2023

HAL is a multi-disciplinary open access archive for the deposit and dissemination of scientific research documents, whether they are published or not. The documents may come from teaching and research institutions in France or abroad, or from public or private research centers.

L'archive ouverte pluridisciplinaire **HAL**, est destinée au dépôt et à la diffusion de documents scientifiques de niveau recherche, publiés ou non, émanant des établissements d'enseignement et de recherche français ou étrangers, des laboratoires publics ou privés.

1 Unexpected morphological diversity in ancient dogs compared to 2 modern relatives

3 Colline Brassard^{1,2,*}, Adrian Bălăşescu³, Rose-Marie Arbogast⁴, Vianney Forest^{5,6}, Céline Bemilli^{1,7},
4 Adina Boroneanţ³, Fabien Convertini^{5,8}, Muriel Gandelin^{6,5}, Valentin Radu⁹, Patricia A. Fleming¹⁰,
5 Claude Guintard^{11,12}, Tracey L. Kreplins¹⁰, Cécile Callou¹, Andréa Filippo¹, Anne Tresset^{1,†}, Raphaël
6 Cornette¹³, Anthony Herrel², Stéphanie Bréhard^{1,*}

7
8 ¹ AASPE-UMR 7209, CNRS-Muséum National d'Histoire Naturelle, Paris, France.

9 ² MECADEV-UMR 7179, Muséum national d'Histoire naturelle, Paris, France.

10 ³ "Vasile Pârvan" Institute of Archaeology, Romanian Academy, Bucharest, Romania.

11 ⁴ ARCHIMEDE-UMR 7044, Strasbourg, France.

12 ⁵ Institut National de Recherches Archéologiques Préventives (INRAP) Midi-Méditerranée, 30900
13 Nîmes, France.

14 ⁶ TRACES-UMR 5608, Université Toulouse - Jean-Jaurès, Toulouse, France.

15 ⁷ Institut National de Recherches Archéologiques Préventives (INRAP) Île de France, Le Grand
16 Quevillys, France.

17 ⁸ ASM-UMR 5140, Montpellier, France.

18 ⁹ National Museum of Romanian History, Bucharest, Romania.

19 ¹⁰ Environmental and Conservation Sciences, Harry Butler Research Centre, Murdoch University,
20 Murdoch, WA, Australia.

21 ¹¹ Laboratoire d'Anatomie comparée, Ecole Nationale Vétérinaire, de l'Agroalimentaire et de
22 l'Alimentation, Nantes Atlantique – ONIRIS, Nantes, France.

23 ¹² GEROM, UPRES EA 4658, LABCOM ANR NEXTBONE, Faculté de santé de l'Université d'Angers,
24 France.

25 ¹³ ISYEB-UMR7205, Muséum national d'Histoire naturelle, CNRS, Sorbonne Université, EPHE,
26 Université des Antilles, Paris, France.

27 *To whom correspondence may be addressed: Colline Brassard (co.brassard@gmail.com) or

28 Stéphanie Bréhard (stephanie.brehard@mnhn.fr)

29 **Author Contributions:** Cécile Callou, Andréa Filippo, Anne Tresset, Raphaël Cornette, Anthony
30 Herrel and Stéphanie Bréhard designed research. Colline Brassard collected the images of mandibles
31 for GMM analyses and performed the GMM data acquisition. Colline Brassard, Raphaël Cornette,
32 Anthony Herrel and Stéphanie Bréhard analyzed and interpreted the GMM data. Adrian Bălăşescu,
33 Rose-Marie Arbogast, Vianney Forest, Céline Bemilli, Adina Boroneanţ, Fabien Convertini, Muriel
34 Gandelin, Valentin Radu, Anne Tresset and Stéphanie Bréhard provided archaeological samples of
35 *Canis* sp. for geometric morphometric analyses and detailed information regarding the archaeological
36 contexts from which they were recovered. Claude Guintard, Tracey L. Kreplins, Elodie Monchâtre-
37 Leroy and Patricia L. Fleming provided modern samples of dogs for G.M.M. analysis. Colline
38 Brassard, Anthony Herrel and Stéphanie Bréhard wrote the manuscript, with the scientific and editing
39 input from Adrian Bălăşescu, Adina Boroneanţ Fabien Convertini, Raphaël Cornette, Andréa Filippo,
40 Patricia A. Fleming, Vianney Forest, Claude Guintard and Valentin Radu. All authors reviewed the
41 manuscript and the supplementary information.

42 **Competing Interest Statement:** The authors declare no competing interest.

43 **Abstract**

44 Dogs are among the most variable species today, but little is known about the morphological
45 variability in the early phases of their history. The Neolithic transition to farming may have resulted in
46 an early morphological diversification as a result of changes in the anthropic environment or
47 intentional selection on specific morphologies. Here, we describe the variability and modularity in
48 mandible form by comparing 525 dog mandibles from European archaeological sites ranging from
49 8,100 to 3,000 cal. BC to a reference sample of modern dogs, wolves, and dingoes. We use three-
50 dimensional geometric morphometrics to quantify the form of complete and fragmented mandibles.
51 We demonstrate that an important morphological variability already existed before the Bronze Age in
52 Europe, yet the largest, smallest, most brachycephalic or dolichocephalic extant dogs have no
53 equivalent in the archaeological sample, resulting in a lower variation compared to modern relatives.
54 The covariation between the anterior and posterior parts of the mandible is lower in archaeological
55 dogs, suggesting a low degree of intentional human selection in early periods. The mandible of
56 modern and ancient dogs differs in functionally important areas, possibly reflecting differences in diet,
57 competition, or the implication of ancient dogs in hunting or defense.

58 **Keywords:** Neolithic, Chalcolithic, dog, mandible, shape

59 **1. Background**

60 Although they descend from the same ancestor (the grey wolf; [1]), extant dogs are among the most
61 variable species on the planet, both in terms of size and proportions [2]. This tremendous variability is
62 the result of rapid phenotypic changes in response to strong intentional selection by humans over the
63 last 200 years (defined herein as 'modern' times). This selection on specific physical or behavioral
64 traits to satisfy functional needs (e.g. for work, hunting, or running) or for strictly aesthetic reasons led
65 to the creation of breeds (defined by standards established since the nineteenth century) and to the
66 diversity of forms observed today [3].

67 Whilst numerous studies have explored the genetic basis of the phenotypic variability in extant dogs
68 (e.g. [4–10]), very little is known about **their** morphological variability **in the past in** Europe.
69 Considering that the notion of breed refers to a very recent event, the terms "type" or "morphotype"
70 (characterized by different cranial proportions) are more relevant to describe head shape in ancient
71 dogs. A division into dolichocephalic (elongated and narrow skull, akin to greyhounds), brachycephalic
72 (broad and short skull, akin to mastiffs or bulldogs), and intermediate mesocephalic types is thus often
73 used. Different morphotypes appear identifiable in Western Europe as early as the Metal Ages (i.e.
74 from the second millennium cal. BC), and this phenomenon intensified during the Middle Ages and
75 modern times [11,12]. Few studies have explored morphological variability in earlier periods, yet
76 different sizes of dogs are described as early as the late Upper Paleolithic in Western Europe [13,14].
77 However, the early phases of domestication are particularly complex to consider given the uncertainty
78 surrounding the place and timing of domestication [10,15–17] and the difficulty to distinguish wolves
79 from early dogs due to the scarcity and the fragmented nature of these early canid remains [18]. The
80 strong morphological similarity between early dogs and wolves [19–21], and possible hybridization
81 between them [1,3] render this even more complex.

82 The **period from the Mesolithic onwards (i.e. from the tenth millennium cal. BC)** is of great interest to
83 explore the morphological diversity of dogs in Europe. First, **because from this period onwards dogs**
84 **show a marked phenotypic divergence from their ancestors and size seems to clearly distinguish**
85 **them** [13,22–24]. **Second**, dog remains **become** recurring in European sites ([9,24–28]), their
86 frequency increasing during the fifth millennium cal. BC throughout Europe (e.g. [22,24,29–33]).
87 Third, genetic data show that modern dogs originate from at least five ancestral dog lineages which
88 diversified by *circa* 9,000 years BC [10], several of them being responsible for early and successive
89 gene flow which made up the genetic history of ancient dogs in Europe [6,10]. In parallel, the
90 increasing sedentarization and subsequent transition to farming during the Neolithic in Western
91 Eurasia (i.e. from the middle tenth millennium cal. BC) may have involved intentional selection of
92 certain phenotypes (in terms of size or proportions) associated with specific tasks (hunting, guarding).
93 In Europe, from the Mesolithic onwards, dogs were widely eaten, and their bones were occasionally
94 used for the manufacturing of ornaments. Dogs were also the subject of other social or symbolic
95 considerations as attested by the burial of complete bodies, sometimes in close association with
96 human deposits. It is difficult to demonstrate their role in hunting or for the protection of camps or
97 villages, but their scarce presence in prehistoric settlements, where they were neither eaten nor
98 buried, could be an indication. In that respect, the vast diversity in the roles played by dogs at that
99 time [11,22,25,29,30,34] may have been accompanied by an early morphological diversification, long
100 before the Metal Ages.

101 The morphological and genetic diversity of dogs during this time period in Western Eurasia has been
102 explored to some degree. Genetic data providing information on coat color [5], mitochondrial
103 haplogroup [6], or their ability to digest starch [10,35] have been published. Osteometric data are
104 abundant, however, these consist of linear measurements which only provide information on the
105 stature and gracility of the animals (e.g. [22–24,28,36]) and do not allow to explore the morphological
106 variability of canids beyond size. Thus, to date, there is no large-scale study describing the
107 morphological variability of European prehistoric dogs. Given the considerable number of mandibles

108 in archaeological assemblages, and the fact that mandibular shape has been proven to be a good
109 indicator of cranial shape and thus of the overall head morphotype in modern dogs [37], this bone is a
110 promising object to explore morphological variability in the head of ancient dogs (yet not
111 systematically correlated to the morphology of the complete body in modern dogs). Additionally, as
112 significant and strong relationships between the mandible and the masticatory muscles have been
113 demonstrated in modern dogs [37,38], mandible form may be used to make functional inferences on
114 archaeological specimens.

115
116 With the present study, we aimed at **describing** the **overall** morphological variability in the mandible of
117 a very large sample of European prehistoric dogs (defined herein as 'ancient' dogs) **and compare**
118 **them to a sample of modern dogs**. We **included dogs from** the period ranging from the Mesolithic to
119 the end of the Romanian Chalcolithic (*circa* 8,100 to 3,000 cal. BC) to avoid the possible
120 misidentification of wolves, dogs, or their hybrids in the early phases of the domestication process.
121 Three-dimensional geometric morphometric methods were used to describe mandible form in a
122 sample of 525 archaeological mandibles of dogs and eight wolves from 27 sites in Western Europe
123 and Romania (figure 1A). **Given that mandibles are rarely complete in the archaeological record,**
124 **making it more challenging to have a complete representation of an extensive sample from ancient**
125 **remains, we used ten different protocols corresponding to the most common fragmentation patterns in**
126 **our sample (figure 1C, supplementary text Fig. S1).** For each fragment, the variability of ancient dogs
127 was compared to variability evident in a sample of 66 modern dogs of various breeds, dingoes, and
128 captive wolves. We used multivariate statistical tools to quantify the variability in both size and shape.
129 Given the diversity in status of these prehistoric dogs we expected some variability in ancient dogs,
130 yet less so than in modern dogs submitted to intensive intentional human selection. As dingoes have
131 evolved separately over the last 3,600–5,000 years (the estimated time of first introduction to
132 Australia, mostly likely as a result of transport by Asian seafarers [39]), we predicted that their form
133 would be intermediate between that of the ancient and modern dogs. **Assuming that prehistoric dogs**
134 **were subjected primarily to natural constraints while the anatomy of modern dogs is limited by strong**
135 **developmental constraints [2,40,41], we expect the mandible of ancient dogs to be more plastic (i.e. to**
136 **show morphological traits in response to their environment and allowing them to survive in new**
137 **conditions [42]). We thus tested the relationship (i.e. covariation, integration) between the anterior**
138 **(supporting the teeth and thus more conservative) and posterior part (supporting the masticatory**
139 **muscles and thus more akin to represent functional variability showing adaptation to environmental**
140 **constraints) of the mandible (figure 1B) and expect it to be lower (i.e. more modular, less integrated)**
141 **in ancient dogs compared to modern relatives.**

142 **2. Methods**

143 A full description of the materials and methods used is provided in the electronic supplementary
144 material, supplementary text.

145 We quantified the shape of 525 dog and eight wolf mandibles from 27 archaeological sites dated to
146 between the Mesolithic and the end of the Romanian Chalcolithic across Western Europe and
147 Romania (figure 1A; electronic supplementary material, Table S1). The distinction between dogs and
148 wolves was made following a size criterion [13,14,22,35] (see supplementary text and figure S2). The
149 modern sample was constituted of 66 dogs of various breeds (see electronic supplementary material,
150 Dataset S1), most being represented by only one or two specimens with the exception of beagles (N
151 = 20). Modern dogs were classified into brachycephalic ('short-headed'), mesocephalic, or
152 dolichocephalic ('long-headed') based on the cephalic index, **i.e. the relative proportion of skull**
153 **breadth to skull length** [43]. We also quantified the shape of the mandibles of eight captive wolves and
154 eight wild Australian dingoes. Only specimens with the first molar completely erupted (**i.e. non-juvenile**
155 **specimens**) were considered for analyses.

156 We used photogrammetry to obtain three-dimensional (3D) models of the mandibles. Next, we
157 quantified morphological variation using 3D geometric morphometrics. Ten different landmarking
158 protocols (figure 1B,C; electronic supplementary material Tables S2 and S3) were considered to take
159 into account a maximum number of mandibles and mandible fragments, based on the fragmentation
160 patterns most represented in the archaeological sample [44] (see electronic supplementary material,
161 figure S1).

162 A suite of statistical analyses (landmark sliding, Procrustes superimposition, Student t-tests, ANOVAs,
163 Procrustes ANOVAs, Principal Component Analyses PCA, discriminant analyses through Canonical
164 Variate Analyses CVA, etc.) were carried out in R v4.0.0 (2020-04-24) using the packages Morpho
165 and geomorph (see electronic supplementary material, supplementary text). We tested for differences
166 in the means or the variability in centroid size, differences in shape, or allometry-free shape, and
167 explored the covariation between the anterior and posterior parts of the mandible using modularity
168 tests (figure 1B).

169 **3. Results**

170 In the following, we focus primarily on the results based on the complete mandibles. The results of
171 descriptive statistics for the ten fragments are shown in table 1 and illustrated in figures 2 and 3, as
172 well as in electronic supplementary material, figures S3 to S11 and S13. The results of the parallel
173 analyses performed on a reduced number of landmarks are reported in the electronic supplementary
174 material, table S3.

175 **(a) Variability in mandible size**

176 Ancient dogs are significantly less variable in terms of mandible centroid size and tend to have
177 smaller mandibles, on average, than modern dogs, having a mean mandible size comparable to
178 modern beagles (figure 2C, table 1). The difference in size is significant for all mandible fragments
179 analyzed (table 1). However, the range of sizes in ancient dogs was smaller than in the modern
180 sample, with the largest brachycephalic modern dogs and the smallest toy dogs having no equivalent
181 in the archaeological sample, which was expected. All modern wolves have mandibles larger than the
182 largest one in ancient dogs, according to all fragments except the smallest (fragments G and I), for
183 which there is some overlap between dogs and wolves (electronic supplementary material, figures
184 S8C and S10C). Dingoes have mandibles of intermediate sizes, between those of dogs and wolves
185 (figure 2C).

186 **(b) Variability in mandible shape**

187 Ancient dogs have significantly less variability in mandible shape or allometry-free shape than modern
188 dogs (table 1), demonstrating that the differences in morphological variability depend on more than
189 just differences in size. The results are significant for all fragments except the smallest (fragments G
190 and I). **In ancient dogs, a reduced part of the variability in shape is related to size compared to
191 modern dogs (table 1).**

192 This greater variability in shape in modern dogs is observable on the first two axes of the principal
193 component analysis (PCA) for most fragments and on the trees **depicting morphological similarity**
194 (figure 2A-B, electronic supplementary material, figures S3 to S11). For the most complete mandibles
195 (fragment A), low values of the first principal component (PC1; 21.9% of total variability) describe a
196 relatively smaller jaw angle and smaller coronoid process, while high values describe a larger area for
197 the masseteric fossa. Low values of second principal component (PC2; 13.5% of total variability)
198 describe a shorter and more curved mandible with a greater ramus depth, while high values for PC2
199 describe a flatter, shallower mandible. **The first principal component correlates** with centroid size

200 (PC1: $R^2 = 0.25$, $p < 0.001$; PC2: $p = 0.16$; figure 2A): the dogs with the smallest mandibles (therefore
201 the smallest dogs in terms of body size) are generally positioned to the left of the scatterplot and the
202 biggest dogs tend to be positioned towards the right. Modern dogs contribute strongly to the variability
203 described by the first two axes, and some modern breeds extend beyond the variability observed in
204 ancient dogs, in particular large brachycephalic breeds (such as rottweilers, pitbulls, bulldogs,
205 leonberger, boxer, mastiff), extremely dolichocephalic dogs (such as borzoi), and small toy dogs
206 (papillon, chihuahua, dachshund). The most dolichocephalic modern dogs have higher PC2 values
207 (appear towards the top of the scatterplot), while the most brachycephalic dogs have higher PC1
208 values and lower PC2 values and separate out towards the bottom right of the scatterplot. Most
209 ancient dogs overlap at the center of the scatterplot with modern normocephalic breeds, modern
210 dingoes, and modern or ancient wolves. Interestingly, some ancient dogs occupy a unique part of the
211 morphospace not occupied by modern canids on the negative part of PC1 (figure 2A).

212 The **trees** based on morphological distances (figure 2B) support the distinction between ancient and
213 modern dogs and provide a more refined view on the positioning of ancient dogs compared to their
214 modern counterparts. Modern and ancient dogs tend to be on separate branches and some branches
215 (e.g. figure 2B, branches b and c) contain only ancient dogs. One branch clearly isolates the most
216 brachycephalic modern dogs (figure 2B, branch a), distinct from the ancient dogs. Most
217 dolichocephalic modern dogs (figure 2B, branch f) are similarly distinguished from most ancient dogs.
218 By contrast, the mandible shape of some modern breeds (figure 2B, branch b: mastiff, figure 2B,
219 branch d: husky, pomeranian, bichon teneriffe, sloughi) appears more similar to that of ancient dogs.
220 The beagles ($n=20$) are nearly all grouped on the same branch (figure 2B, branch e) in the middle of
221 the ancient dogs. Modern dingoes group into three separate branches on this **tree**, mostly with
222 modern and ancient wolves, but some are close to modern dogs and one is in the midst of ancient
223 dogs. Most modern and ancient wolves isolate on a separate branch (figure 2B, branch g), distinct
224 from all ancient dogs except one (over 127). These observations are confirmed when the sample size
225 is increased by conducting the same analyses with fragment B ($n=226$; electronic supplementary
226 material, figure S3) and even other, smaller, fragments (figures S4 to S11). Not surprisingly, the
227 analyses conducted on the smallest fragments G and I (figures S8 and S10) lead to a tree without
228 clear structure.

229 Ancient dogs significantly differ from modern dogs in mean mandible shape ($p < 0.001$ for all
230 fragments, table 1). The discriminant analyses (Canonical Variate Analyses, CVA) performed on all
231 fragments result in an excellent classification rate (over 87%, table 1), reinforcing the observation that
232 ancient and modern dogs differ in shape, and that the differences involve different anatomical features
233 located on all regions of the mandible. Ancient dogs had a more robust (body of the mandible being
234 taller under the carnassial) and curved mandibles, with a straighter coronoid process, a more
235 developed angular process, and a shallower masseteric fossa (figures 3 and S13).

236 **(c) Modularity of the mandible**

237 The results of the modularity tests indicate significant modular structure in shape and allometry-free
238 shape for all groups ($p < 0.001$, table 2). The CR coefficient is much lower in ancient dogs compared
239 to modern **dogs both when considering the shape (Z -score=11.3, $p < 0.001$) or the allometry-free**
240 **shape (Z -score=10.5, $p < 0.001$)**, suggesting that mandible is more modular (*i.e. less integrated*) in
241 ancient dogs (the anterior and posterior part of the mandibles covary less). The preliminary results
242 obtained for the ancient and modern wolves and modern dingoes further suggest that modularity in
243 modern dogs is not different from that of wolves or dingoes.

244

245 **4. Discussion**

246 Our analyses clearly demonstrated that the morphological diversity in the head (the mandible being a
247 proxy of overall head shape [37]) of European dogs was considerable well before the Bronze Age, yet
248 lower than in modern dogs. In ancient dogs, mandible size varied from very small, similar to some
249 modern small dogs such as the pomeranian or dachshund, to larger sizes compatible with modern
250 large dogs such as the husky, golden retriever or German shepherd. However, the mandible size of
251 ancient dogs was always much smaller than that of wolves and on average corresponds to that of
252 modern beagles. Mandible shape varied from shapes similar to those of ancient or modern wolves or
253 dingoes, to those of modern meso-dolichocephalic dogs (e.g. beagles, sloughi, bichon Tenerife,
254 pomeranian, mastiff, shepherd dogs). As expected, no extreme forms were observed among the
255 ancient dogs: the very brachycephalic (pitbull, amstaff, boxer, bulldog etc.) and very dolichocephalic
256 (borzoi) modern dogs have no equivalent in ancient **times**. There was nevertheless substantial
257 morphological variability in ancient dogs, indicating that dogs had diverse head shapes as early as the
258 Neolithic in Europe. Yet, this diversification likely did not result from a drastic selection similar to the
259 intentional breed selection over the past 150 years. The lower variability in ancient dogs, as well as
260 the relative short morphological distance between some dingoes and ancient dogs or between some
261 ancient dogs and wolves or modern dogs of average morphologies suggests minimal intentional
262 human selection for specific morphotypes. In other words, if the first farmers selected for distinct
263 morphotypes, they did not favor extreme morphologies.

264
265 Interestingly, clear differences in the mean shapes between the ancient and modern samples were
266 discovered. This separation is not influenced by taphonomic or pathological processes (e.g. exostosis
267 associated with dental disease). Indeed, only the most complete mandibles were included in analyses
268 with fragment A. Additionally, the parallel analyses performed with only anatomical landmarks
269 (surface landmarks being more likely to be impacted by bone deformation) led to similar results (see
270 electronic supplementary material, figure S12 and table S3). Neither it is influenced by ontogeny as
271 the youngest specimens were removed from the analyses (see methods). Our modern sample covers
272 a wide range of **shapes** (all morphological types including hypertypes are represented), however, is
273 not exhaustive and lacks some landraces of dogs, such as those from Asia, or village dogs. Further
274 analyses are thus needed before concluding that **the unique shapes observed in ancient dogs**
275 definitively have no equivalent in modern dogs, and represent shapes that have disappeared.

276
277 Our results are based on a large number of ancient mandibles (227), supported by fragments A and B
278 (which are the most representative of the complete form of the mandible), and are generally confirmed
279 when including data for smaller fragments (table 1). The two smallest fragments (G and I) lead to less
280 conclusive results, likely because these fragments represent only a very small part of the mandible
281 and are thus less representative of the complete mandible shape. This is supported by the distribution
282 of the ancient dogs with complete mandibles in the PCA based on fragments I and G (electronic
283 supplementary material, figures S8 and S10). Considering the composition of the archaeological
284 sample (figure S1, table S1), the conclusions drawn are especially valid for the Middle Neolithic in
285 Western Europe and the Late Chalcolithic in Romania. The earliest (Mesolithic and Early Neolithic)
286 phases are poorly represented due to the scarcity of dog bones and their fragmentation (electronic
287 supplementary material, figure S1, table S1). It thus cannot be excluded that during these early
288 phases some other forms existed, possibly adding to the group of ancient dogs extending outside the
289 variability of our modern sample. Further samples from these early periods would enable us to further
290 explore this variability.

291
292 The anatomical differences between modern and ancient dogs may partly be explained by a change
293 in the genetic composition of dog populations through time. Mitochondrial haplogroups C and D were
294 dominant in Europe before the Bronze Age (63% and 20%, respectively), whereas they represent only
295 around 11% and 3% of extant European dogs, respectively [15]. Haplogroups A and B currently
296 overwhelmingly dominate (64% and 22%, respectively) in Europe. **This change results from complex**

309
310
311
312
313
314
315
316
317
318
319
320
321
322
323
324
325
326
327
328
329
330
331
332
333
334
335
336
337
338
339
340
341
342
343
344
345

migrations, replacements and admixture through time and space. Considering the distinct geographic distribution of the different maternal lineages before the Neolithic period [6,15] each may be characterized by specific phenotypic traits, yet this remains unstudied to date. They may also reflect differences in the anthropic environment or the way of life of dogs. Given that the most discriminant traits are located in areas of functional importance (robustness and curvature of the mandibular body, size of the angular and coronoid processes, shallowness of the masseteric fossa), this may have resulted in differences in jaw function and bite force [45]. The differences in the curvature of the body of mandible under the carnassial suggests a greater importance of the role of the temporal muscle in ancient dogs (figure 3A and B). This may be related to diet of these dogs which were likely feeding on more tough and hard foods than most modern dogs, thus placing very different demands on mandibular function and form (e.g. [46,47]). Additionally, a greater bite force and/or implication of the temporalis muscle would have been useful in dogs used for defense or hunting.

Our analyses further show that the relationship between the anterior and posterior parts of the mandible was less strong in ancient dogs compared to modern dogs (or captive wolves and commensal dingoes, but the low sample size did not allow to draw conclusions for these animals). The strong integration in the mandible of modern dogs, despite intense artificial selection, is concordant with previous comparisons between modern dogs and wolves [40] or other wild canids such as the red fox [33], and may be explained by developmental factors constraining mandible shape in canids [2]. This is consistent with previous studies evidencing similar patterns of developmental integration in the skull of domestic/wild pairs of mammals [2,40,41]. The lower integration in ancient dogs may be due to the fact that they were more submitted to natural (environmental) constraints allowing some parts of the mandible to be more variable compared to modern dogs. In particular, the mandibular ramus (providing attachment for masticatory muscles) is more likely to adapt quickly to natural constraints and functional demands, related to, for example, diet, than the mandibular corpus (bearing the teeth, which are much more conservative). The overall variability in diet in ancient dogs likely being higher, this may have selected for more variability in the shape of the mandibular ramus. Such a difference in integration related to artificial selection was previously demonstrated in the long bones of modern horses and donkeys [48], and by comparing the mandible of dogs and commensal red foxes [33], but never, to our knowledge, in the mandible of other domestic/wild mammal pairs.

The observed differences in mean shape and integration of the mandible between modern and ancient dogs and the fact that we did not find any extreme shapes in prehistoric dogs support the hypothesis that the first farmers did not exert strong selection on dogs for aesthetic or utilitarian reasons that might have constrained the anatomy (and modularity) of the mandible. Dogs were most likely free-ranging and closer to a commensal lifestyle, as observed in some extant tribes of hunter-gatherers where humans share their diet with dogs [49]. This is further suggested by isotopic data for some Neolithic dogs [29]. Additional feral dogs likely subjected to constraints closer to ancient dogs (i.e. less intentional human selection and more natural constraints) are needed to investigate this possibility further.

Now that the global variability in dogs prior to the Bronze Age has been described overall, it would be of interest to confront morphological data with genetic, isotopic, or contextual data (i.e. whether dogs were eaten or buried complete, or in accordance with the mode of subsistence relying on hunting or herding) to explore what drove diversity within the archaeological sample. This would allow more profound insights into how the changes in human societies were accompanied by changes in the morphology of dogs through time and space. Paleogenetic data might, for example, allow to test whether the acquisition of the ability to digest starch was accompanied by changes in mandible form. Additional contextual data would further enable a better understanding of when the morphological diversification started: as soon as hunter-gatherers settled, with the farming transition, or later with the complexification of Neolithic societies?

346

347 **5. Conclusions**

348 In summary, our comparison of mandible form between European dogs from the Mesolithic to the end
349 of the Romanian Chalcolithic and modern breeds highlighted an unexpected diversity in dogs before
350 the Bronze age, suggesting that dogs showed significant morphological diversity in the head as early
351 as the Neolithic. Additionally, ancient dogs have mandible shapes that differ, on average, from
352 modern dogs, which may be partly related to the changes in the genetic composition of dog
353 populations through time, but also suggests changes in lifestyle and access to food, considering that
354 the anatomical differences are located in areas of functional importance. This, added to the fact that
355 no extreme shapes were observed in ancient dogs and that the integration between the anterior and
356 posterior parts of the mandibles is lower in ancient dogs, suggests that if the first farmers selected for
357 distinct morphotypes, they did not favor extreme morphologies unlike the results of recent breed
358 selection.

359 **Acknowledgments**

360 We thank Radian Andreescu, Alain Beeching, Jacques-Léopold Brochier, Jean-Philip Brugal, Pierre
361 Caillat, Isabelle Carrère, Jennifer Chevrier, Véronique Fabre, Yves Gleize, Gilles Loison, Claire
362 Manen, Cristian Micu, Dragomir Popovici, Jean Vaquer, Valentina Voinea, Andrea Zeeb-Lanz, the
363 archaeological service of the Canton of Bern (Switzerland, Adriano Boschetti, Rebecca Vogt, Barbara
364 Chevallier, Winkelmann Ulrich) and the institute of human paleontology (Paris, France) for providing
365 access to archaeological mandibles of canids. We are grateful to Elodie Monchâtre-Leroy from the
366 laboratory of rabies and wildlife of Nancy Malzéville, Manuel Comte from the veterinary school of
367 Nantes, and the veterinary school of Alfort for providing dog heads of modern breeds. We thank
368 Géraldine Véron and the Service of Mammal and Bird Collections - Comparative Anatomy from the
369 national Museum of natural History in Paris, Arnaud Delapré for his help with the photogrammetry
370 protocol and solving GMM issues; and Laszlo Bartosiewicz, Adam Hartstone-Rose and Allowen Evin
371 for their feedback and comments on preliminary results presented in this manuscript. We also thank
372 the project PN-III-P4-ID- PCE-2020-2369 (PNCDI III program, coordinated by UEFISCDI) **and the**
373 **GDR ChasséoLab.**

374 **Funding**

375 This project has received funding from the French Minister of Higher Education, Research and
376 Innovation, the national Museum of natural History in Paris and the Fyssen foundation.

377 **Data Availability**

378 All data used for the analyses (**3D models of the mandibles, R scripts and datasets**) are available in a
379 **Dryad depository** [50]. [Reviewer url: [https://datadryad.org/stash/share/i4fl41GWJHMfvB-
380 mu3LNg8srMOi_vgwvmzIfHSGL7g](https://datadryad.org/stash/share/i4fl41GWJHMfvB-mu3LNg8srMOi_vgwvmzIfHSGL7g)]

381 **References**

382 1. Larson G *et al.* 2012 Rethinking dog domestication by integrating genetics, archeology, and
383 biogeography. *Proc. Natl. Acad. Sci.* **109**, 8878. (doi:10.1073/pnas.1203005109)

- 384 2. Drake AG, Klingenberg CP. 2010 Large-scale diversification of skull shape in domestic dogs:
385 disparity and modularity. *Am. Nat.* **175**, 289–301. (doi:10.1086/650372)
- 386 3. Freedman AH, Wayne RK. 2017 Deciphering the Origin of Dogs: From Fossils to Genomes. *Annu.*
387 *Rev. Anim. Biosci.* **5**, 281–307. (doi:10.1146/annurev-animal-022114-110937)
- 388 4. Lindblad-Toh K *et al.* 2005 Genome sequence, comparative analysis and haplotype structure of
389 the domestic dog. *Nature* **438**, 803–19. (doi:10.1038/nature04338)
- 390 5. Ollivier M *et al.* 2013 Evidence of Coat Color Variation Sheds New Light on Ancient Canids. *PLOS*
391 *ONE* **8**, e75110. (doi:10.1371/journal.pone.0075110)
- 392 6. Ollivier M *et al.* 2018 Dogs accompanied humans during the Neolithic expansion into Europe.
393 *Biol. Lett.* (doi:10.1098/rsbl.2018.0286)
- 394 7. Freedman AH *et al.* 2014 Genome Sequencing Highlights the Dynamic Early History of Dogs.
395 *PLOS Genet.* **10**, e1004016. (doi:10.1371/journal.pgen.1004016)
- 396 8. Botigué LR *et al.* 2017 Ancient European dog genomes reveal continuity since the Early Neolithic.
397 *Nat. Commun.* **8**, 16082.
- 398 9. Pires AE *et al.* 2019 The curious case of the Mesolithic Iberian dogs: An archaeogenetic study. *J.*
399 *Archaeol. Sci.* **105**, 116–129. (doi:10.1016/j.jas.2019.03.002)
- 400 10. Bergström A *et al.* 2020 Insights into human genetic variation and population history from 929
401 diverse genomes. *Science* **367**.
- 402 11. Horard-Herbin M-P, Tresset A, Vigne J-D. 2014 Domestication and uses of the dog in western
403 Europe from the Paleolithic to the Iron Age. *Anim. Front.* **4**, 23–31. (doi:10.2527/af.2014-0018)
- 404 12. Belhaoues F. 2018 Variabilité morpho-anatomique et statuts des chiens entre âge du Bronze et
405 Antiquité: référentiel et applications archéologiques en Méditerranée nord occidentale.
406 Unpublished PhD thesis, Montpellier 3.
- 407 13. Pionnier-Capitan M, Bemilli C, Bodu P, Célérier G, Ferrié J-G, Fosse P, Garcià M, Vigne J-D. 2011
408 New evidence for Upper Palaeolithic small domestic dogs in South-Western Europe. *J. Archaeol.*
409 *Sci.* **38**, 2123–2140. (doi:10.1016/j.jas.2011.02.028)
- 410 14. Boudadi-Maligne M, Mallye J-B, Langlais M, Barshay-Szmidt C. 2012 Magdalenian dog remains
411 from Le Morin rock-shelter (Gironde, France). Socio-economic implications of a zotechnical
412 innovation. *PALEO Rev. Archéologie Préhistorique*, 39–54. (doi:10.4000/paleo.2465)
- 413 15. Frantz LAF *et al.* 2016 Genomic and archaeological evidence suggest a dual origin of domestic
414 dogs. *Science* **352**, 1228–1231. (doi:10.1126/science.aaf3161)
- 415 16. Galeta P, Lázničková-Galetová M, Sablin M, Germonpré M. 2021 Morphological evidence for
416 early dog domestication in the European Pleistocene: New evidence from a randomization
417 approach to group differences. *Anat. Rec. Hoboken NJ 2007* **304**, 42–62. (doi:10.1002/ar.24500)
- 418 17. Perri AR, Feuerborn TR, Frantz LAF, Larson G, Malhi RS, Meltzer DJ, Witt KE. 2021 Dog
419 domestication and the dual dispersal of people and dogs into the Americas. *Proc. Natl. Acad. Sci.*
420 **118**. (doi:10.1073/pnas.2010083118)

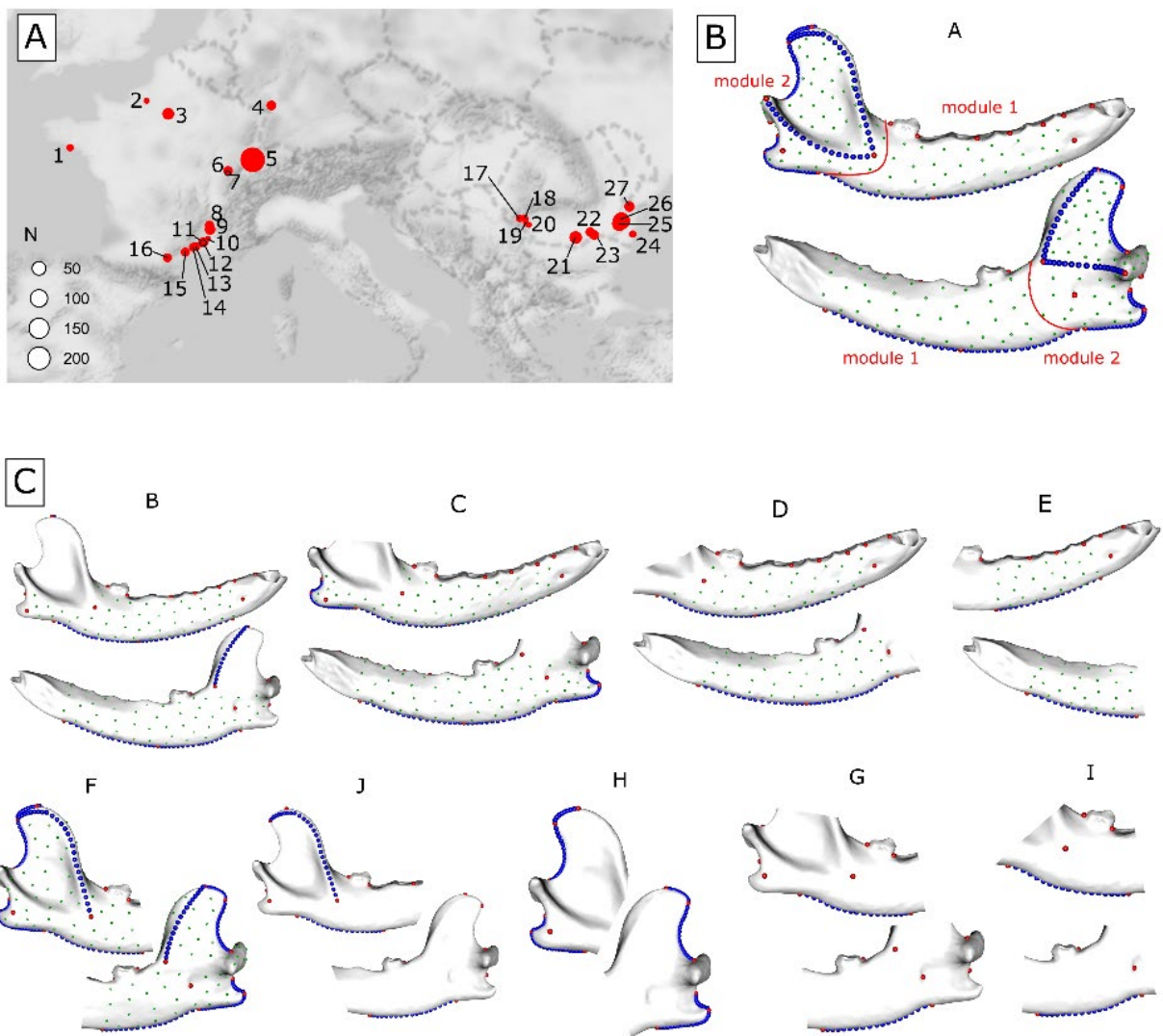
- 421 18. Drake AG, Coquerelle M, Kosintsev PA, Bachura OP, Sablin M, Gusev AV, Fleming LS, Losey RJ.
422 2017 Three-dimensional geometric morphometric analysis of fossil canid mandibles and skulls.
423 *Sci. Rep.* **7**, 9508. (doi:10.1038/s41598-017-10232-1)
- 424 19. Boudadi-Maligne M, Escarguel G. 2014 A biometric re-evaluation of recent claims for Early
425 Upper Palaeolithic wolf domestication in Eurasia. *J. Archaeol. Sci.* **45**, 80–89.
426 (doi:10.1016/j.jas.2014.02.006)
- 427 20. Ameen C, Hulme-Beaman A, Evin A, Germonpré M, Britton K, Cucchi T, Larson G, Dobney K. 2017
428 A landmark-based approach for assessing the reliability of mandibular tooth crowding as a
429 marker of dog domestication. *J. Archaeol. Sci.* **85**, 41–50. (doi:10.1016/j.jas.2017.06.014)
- 430 21. Janssens LAA, Boudadi-Maligne M, Mech LD, Lawler DF. 2021 The enigma of the Předmostí
431 protodogs. A comment on Prassack et al. 2020. *J. Archaeol. Sci.* **126**, 105160.
432 (doi:10.1016/j.jas.2020.105160)
- 433 22. Arbogast R-M, Deschler-Erb S, Marti-Grädel E, Plüss P, Hüster-Plogmann H, Schibler J. 2005 Du
434 loup au «chien des tourbières». Les restes de canidés sur les sites lacustres entre Alpes et Jura.
435 *Rev. Paléobiol.* **10**, 171–183.
- 436 23. Rodet-Belarbi I, Forest V. 2020 La morphologie des chiens du Néolithique à la période moderne
437 en France d’après les ossements archéologiques. *Ethnozootechnie* , 81.
- 438 24. Bălăşescu A, Radu V, Moise D. 2005 *Omul și mediul animal între mileniiile VII-IV î. e. n. la Dunărea*
439 *de Jos*. Târgoviște: Editura Cetatea de Scaun.
- 440 25. Larsson L. 1994 Mortuary practices and dog graves in mesolithic societies of southern
441 Scandinavia. *Anthropologie* **98**, 562–575.
- 442 26. Bălăşescu A, Radu V. 2004 *Omul și animalele: strategii și resurse la comunitățile Hamangia și*
443 *Boian*. Editura Cetatea de Scaun.
- 444 27. Detry C, Cardoso JL. 2010 On some remains of dog (*Canis familiaris*) from the Mesolithic shell-
445 middens of Muge, Portugal. *J. Archaeol. Sci.* **37**, 2762–2774.
- 446 28. Pionnier-Capitan M. 2010 La domestication du chien en Eurasie: étude de la diversité passée,
447 approches ostéoarchéologiques, morphométriques et paléogénétiques. Unpublished PhD thesis,
448 Lyon, Ecole normale supérieure.
- 449 29. Albizuri S *et al.* 2019 Dogs in funerary contexts during the Middle Neolithic in the northeastern
450 Iberian Peninsula (5th–early 4th millennium BCE). *J. Archaeol. Sci. Rep.* **24**, 198–207.
451 (doi:10.1016/j.jasrep.2019.01.004)
- 452 30. Oszás A *et al.* 2016 Coalescent community at Alsónyék: The timings and duration of Lengyel
453 burials and settlement. *Ber. Romisch-Ger. Komm.* **94**, 179–282.
- 454 31. Seidel U, Stephan E, Stika H-P, Dunbar E, Beavan N, Healy F, Whittle A. 2016 Die Zeit der großen
455 Gräben: Modelle zur Chronologie des Michelsberger Fundplatzes von Heilbronn-Klingenberg
456 „Schlossberg“, Stadtkreis Heilbronn, Baden-Württemberg. *Praehistorische Z.* **91**, 225–283.
457 (doi:10.1515/pz-2016-0022)

- 458 32. Lefranc P, Arbogast R-M, Denaire A, Chenal F, Féliu C, Jeunesse C. 2019 Les dépôts humains et
459 animaux en fosses de plan circulaire du 5e millénaire entre Rhin et Danube. *Gall. Préhistoire* ,
460 109–149. (doi:10.4000/galliap.1512)
- 461 33. Brassard C. 2020 Morphological variability in dogs and red foxes from the first European
462 agricultural societies: a morpho-functional approach based on the mandible. Unpublished PhD
463 thesis, Muséum national d’Histoire naturelle, Paris.
- 464 34. Arbogast R-M. 2018 Une vie de chien auprès des premiers éleveurs agriculteurs du Néolithique
465 ancien en Europe occidentale. In *Animal symbolisé, animal exploité : du Paléolithique à la*
466 *Protohistoire* (eds S Costamagno, C Dupont, O Dutour, L Gourichon, D Vialou), pp. 234–248.
467 Paris: Éditions du Comité des travaux historiques et scientifiques.
- 468 35. Ollivier M *et al.* 2016 Amy2B copy number variation reveals starch diet adaptations in ancient
469 European dogs. *R. Soc. Open Sci.* **3**, 160449. (doi:10.1098/rsos.160449)
- 470 36. Harcourt R. 1974 The dog in prehistoric and early historic Britain. (doi:10.1016/0305-
471 4403(74)90040-5)
- 472 37. Brassard C, Merlin M, Guintard C, Monchâtre-Leroy E, Barrat J, Callou C, Cornette R, Herrel A.
473 2020 Interrelations Between the Cranium, the Mandible and Muscle Architecture in Modern
474 Domestic Dogs. *Evol. Biol.* (doi:10.1007/s11692-020-09515-9)
- 475 38. Brassard C, Merlin M, Monchâtre-Leroy E, Guintard C, Barrat J, Callou C, Cornette R, Herrel A.
476 2020 How Does Masticatory Muscle Architecture Covary with Mandibular Shape in Domestic
477 Dogs? *Evol. Biol.* **47**, 133–151. (doi:10.1007/s11692-020-09499-6)
- 478 39. Savolainen P, Leitner T, Wilton AN, Matisoo-Smith E, Lundeberg J. 2004 A detailed picture of the
479 origin of the Australian dingo, obtained from the study of mitochondrial DNA. *Proc. Natl. Acad.*
480 *Sci.* **101**, 12387–12390.
- 481 40. Curth S, Fischer MS, Kupczik K. 2017 Patterns of integration in the canine skull: an inside view
482 into the relationship of the skull modules of domestic dogs and wolves. *Zool. Jena Ger.* **125**, 1–9.
483 (doi:10.1016/j.zool.2017.06.002)
- 484 41. Wilson LAB, Balcarcel A, Geiger M, Heck L, Sánchez-Villagra MR. 2021 Modularity patterns in
485 mammalian domestication: Assessing developmental hypotheses for diversification. *Evol. Lett.* **5**,
486 385–396. (doi:10.1002/evl3.231)
- 487 42. West-Eberhard MJ. 2008 Phenotypic Plasticity. In *Encyclopedia of Ecology* (eds SE Jørgensen, BD
488 Fath), pp. 2701–2707. Oxford: Academic Press. (doi:10.1016/B978-008045405-4.00837-5)
- 489 43. Roberts T, McGreevy P, Valenzuela M. 2010 Human induced rotation and reorganization of the
490 brain of domestic dogs. *PLOS ONE* **5**, e11946. (doi:10.1371/journal.pone.0011946)
- 491 44. Cornette R, Herrel A, Stoetzel E, Moulin S, Hutterer R, Denys C, Baylac M. 2015 Specific
492 information levels in relation to fragmentation patterns of shrew mandibles: do fragments tell
493 the same story? *J. Archaeol. Sci.* **53**, 323–330. (doi:10.1016/j.jas.2014.10.020)
- 494 45. Brassard C *et al.* 2020 Bite force and its relationship to jaw shape in domestic dogs. *J. Exp. Biol.*
495 **223**. (doi:10.1242/jeb.224352)

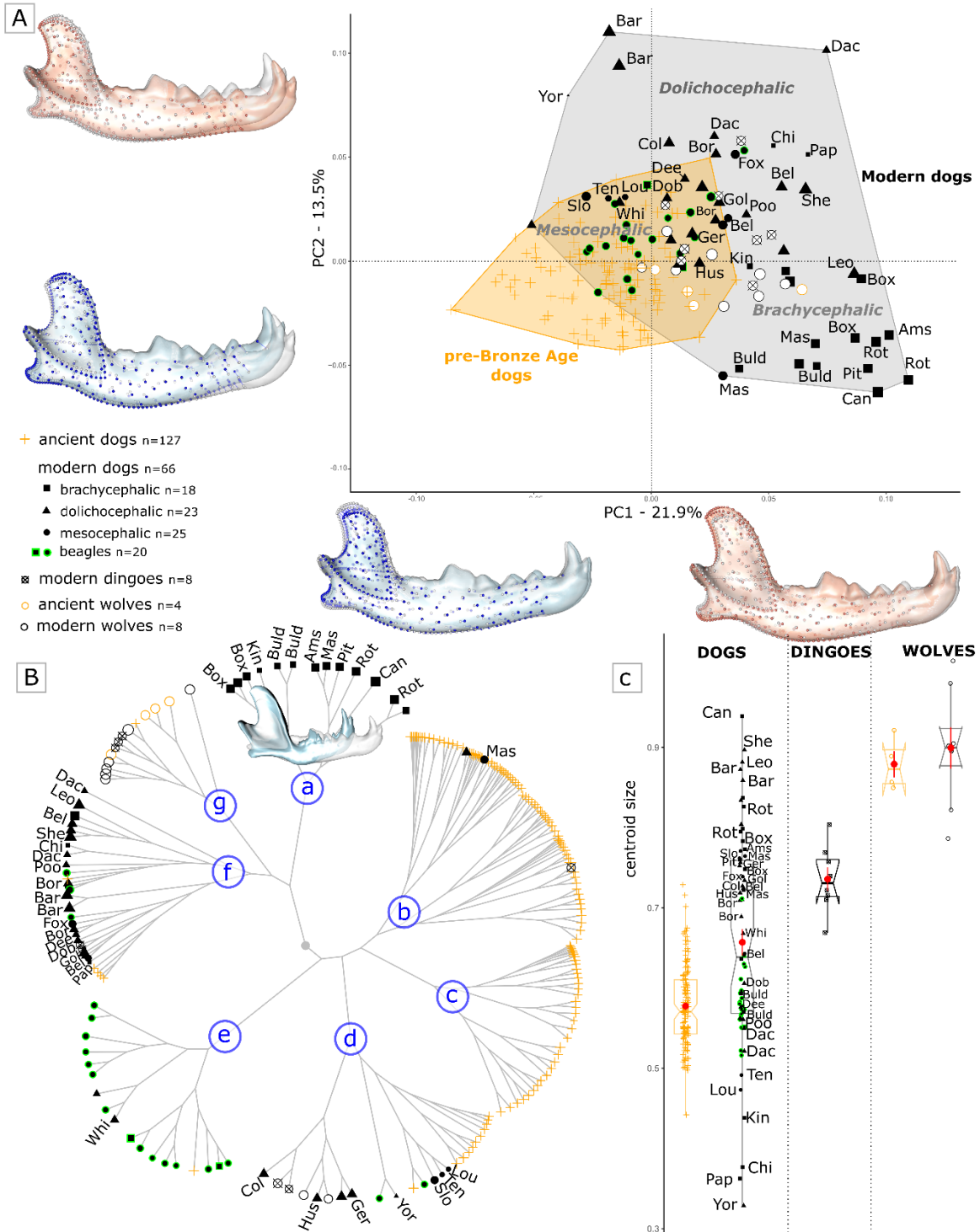
- 496 46. Santana SE, Dumont ER, Davis JL. 2010 Mechanics of bite force production and its relationship to
497 diet in bats. *Funct. Ecol.* **24**, 776–784. (doi:10.1111/j.1365-2435.2010.01703.x)
- 498 47. Morales-García NM, Gill PG, Janis CM, Rayfield EJ. 2021 Jaw shape and mechanical advantage
499 are indicative of diet in Mesozoic mammals. *Commun. Biol.* **4**, 1–14. (doi:10.1038/s42003-021-
500 01757-3)
- 501 48. Hanot P, Herrel A, Guintard C, Cornette R. 2017 Morphological integration in the appendicular
502 skeleton of two domestic taxa: the horse and donkey. *Proc. R. Soc. B Biol. Sci.* **284**, 20171241.
503 (doi:10.1098/rspb.2017.1241)
- 504 49. Grandal-d'Anglade A *et al.* 2019 Dogs and foxes in Early-Middle Bronze Age funerary structures
505 in the northeast of the Iberian Peninsula: human control of canid diet at the sites of Can
506 Roqueta (Barcelona) and Minferri (Lleida). *Archaeol. Anthropol. Sci.* **11**, 3949–3978.
507 (doi:10.1007/s12520-019-00781-z)
- 508 50. Brassard C, *et al.* 2022 Unexpected morphological diversity in ancient dogs compared to modern
509 relatives, Dryad, Dataset. See <https://doi.org/10.5061/dryad.gqnk98sqd>.

511 **Figures and tables**

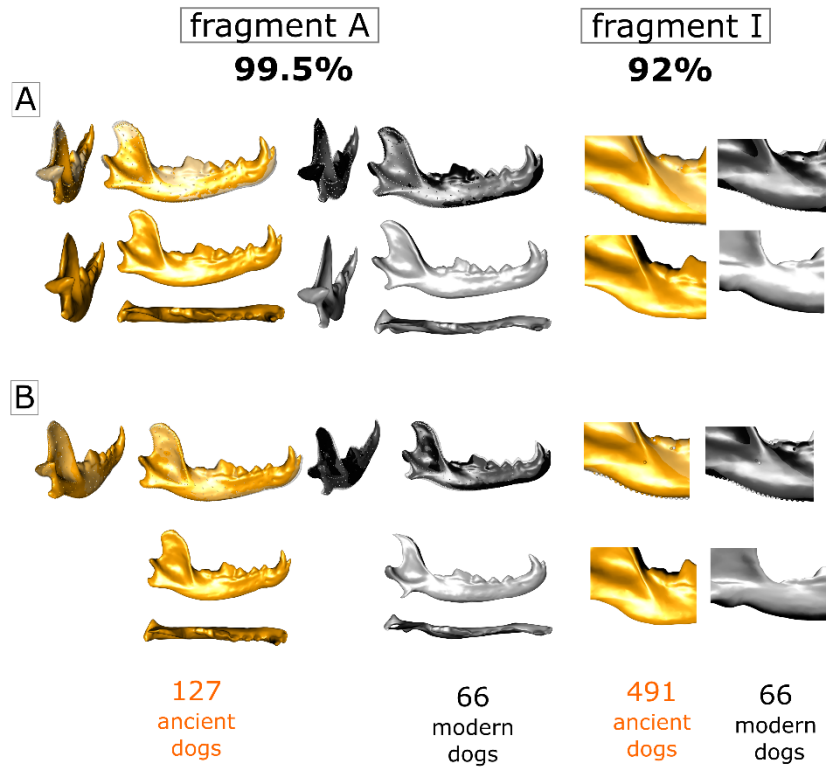
512 **Figure 1.** Origin and fragmentation patterns of the archaeological mandibles. (A) Map showing
513 selected sites dated from the Mesolithic to the end of the Romanian Chalcolithic in Western Europe
514 and Romania. Site key, chrono-cultural attribution and dating are presented in electronic
515 supplementary material, dataset S1. B-C) Three dimensional landmarks considered in the geometric
516 morphometric analyses for the most complete (B) or fragmented (C) mandibles, **matching the ten**
517 **subsets of fragments (letters A to J)**, represented on lateral (top image) or medial (bottom image)
518 views of the mandible. Anatomical landmarks are in red, sliding semi-landmarks of curves are in blue,
519 sliding semi-landmarks of surfaces are in green. 'module 1' and 'module 2' represent the two modules
520 used in the modularity tests performed on the complete mandibles. Definitions of the anatomical
521 landmarks are provided in table S2.



523 **Figure 2.** Visualization of the variability in mandible shape and size in ancient dogs with complete
 524 mandibles (fragment A), with comparison with ancient wolves and modern *Canis*. (A) Principal
 525 Component Analyses on modern and ancient specimens with fragment A (66 modern dogs, eight
 526 modern dingoes, eight modern wolves, 127 ancient dogs and four ancient wolves). Icons size is
 527 proportional to the \log_{10} of the centroid size. Deformations at the minimum and maximum of the PC
 528 axes are represented in blue and pink, respectively. (B) **Tree depicting the morphological similarity**
 529 **between mandibles** based on pairwise Euclidean distances. Icon size is proportional to the \log_{10} of the
 530 centroid size. (C) Boxplot of the centroid sizes of modern and ancient canids. Ancient canids are
 531 orange, modern canids are in black. The labels of modern dogs indicate the breed (key is presented
 532 in electronic supplementary material, dataset S1). Groups (a), (b), (c), (d), (e), (f) and (g) are
 533 mentioned in the text.



535 **Figure 3.** Visualization of the differences between modern (black/grey) and ancient (orange) dogs,
 536 based on the results of the CVA performed on mandible shapes (A) or allometry-free shapes (B) for
 537 fragments A and I. The sample size and percentage of cross-validation are indicated. On the upper line,
 538 shapes at the minimum and maximum of CV scores are superposed to the mean shape of the
 539 CVA and vectors of deformations between the two shapes are represented. On the lower line,
 540 deformations from the mean shape to the minimum or maximum of the CV scores are magnified by 3.
 541 See electronic supplementary material, figure S13 for visualizations with other fragments.



543 **Table 1.** Results of the statistical analyses performed on all fragments to compare the variance or
544 mean in mandible size, shape and allometry-free shape between modern ($n = 66$) and ancient dogs
545 (sample size and the proportion of the total archaeological sample for each fragment is reported in the
546 table). The sample sizes of ancient wolves used for visualization in the Principal Component Analyses
547 and trees depicting morphological similarity for each fragment are also reported. CVA: Canonical
548 Variate Analysis; P: p value; R^2 coefficient of correlation; PVa: Procrustes Variance of ancient dogs;
549 PVm: Procrustes variance of modern dogs.

Fragment	Sample size		Mandible size		Mandible shape			Allometries		Mandible allometry-free shape		
	ancient dogs	ancient wolves	Variance	Mean	Disparity	Mean	CVA	ancient	modern	Disparity	Mean	CVA
A	127 – 24%	4	$P<0.001$	$P<0.001$	PVa 0.0039 PVm 0.0069 $P<0.001$	R^2 0.12 $P<0.001$	99.5%	R^2 0.027 $P<0.001$	R^2 0.082 $P<0.001$	PVa 0.0038 PVm 0.0065 $P<0.001$	R^2 0.093 $P<0.001$	83%
B	227– 43%	4	$P<0.001$	$P<0.001$	PVa 0.0038 PVm 0.0065 $P<0.001$	R^2 0.091 $P<0.001$	99%	R^2 0.028 $P<0.001$	R^2 0.079 $P<0.001$	PVa 0.0037 PVm 0.0062 $P<0.001$	R^2 0.077 $P<0.001$	94%
C	216– 41%	4	$P<0.001$	$P=0.006$	PVa 0.0034 PVm 0.0054 $P<0.001$	R^2 0.080 $P<0.001$	98%	R^2 0.029 $P<0.001$	R^2 0.097 $P<0.001$	PVa 0.0033 PVm 0.0049 $P<0.001$	R^2 0.074 $P<0.001$	95%
D	392– 75%	6	$P<0.001$	$P=0.004$	PVa 0.0051 PVm 0.0068 $P=0.004$	R^2 0.047 $P<0.001$	99%	R^2 0.033 $P<0.001$	R^2 0.051 $P<0.001$	PVa 0.0049 PVm 0.0066 $P=0.003$	R^2 0.043 $P<0.001$	98%
E	437– 83%	7	$P<0.001$	$P<0.001$	PVa 0.013 PVm 0.018 $P=0.009$	R^2 0.050 $P<0.001$	99%	R^2 0.14 $P<0.001$	R^2 0.12 $P<0.001$	PVa 0.011 PVm 0.017 $P=0.003$	R^2 0.023 $P<0.001$	96%
F	155 – 29%	5	$P<0.001$	$P<0.001$	PVa 0.0062 PVm 0.0076 $P=0.013$	R^2 0.088 $P<0.001$	97%	R^2 0.021 $P<0.001$	R^2 0.082 $P<0.001$	PVa 0.0061 PVm 0.0075 $P=0.037$	R^2 0.068 $P<0.001$	83%
G	386– 74%	6	$P<0.001$	$P=0.017$	$P=0.11$	R^2 0.053 $P<0.001$	97%	R^2 0.053 $P<0.001$	R^2 0.062 $P<0.001$	PVa 0.0096 PVm 0.017 $P=0.029$	R^2 0.053 $P<0.001$	96%
H	160 – 30%	5	$P<0.001$	$P<0.001$	PVa 0.0035 PVm 0.0053 $P<0.001$	R^2 0.056 $P<0.001$	92%	R^2 0.0099 $P<0.13$	R^2 0.093 $P<0.001$	PVa 0.0035 PVm 0.0048 $P=0.002$	R^2 0.041 $P<0.001$	83%
I	488– 93%	7	$P<0.001$	$P=0.21$	$P=0.9$	R^2 0.021 $P<0.001$	93% 98% ancient 62% modern	R^2 0.023 $P<0.001$	R^2 0.051 $P<0.001$	PVa 0.010 PVm 0.013 $=0.032$	R^2 0.025 $P<0.001$	93% 98% ancient 62% modern
J	215 – 41%	5	$P<0.001$	$P<0.001$	PVa 0.0044 PVm 0.0058 $P<0.001$	R^2 0.11 $P<0.001$	97%	R^2 0.027 $P<0.001$	R^2 0.097 $P<0.001$	PVa 0.0043 PVm 0.0056 $P=0.009$	R^2 0.075 $P<0.001$	91%
Total	525	8										

552 **Table 2.** Results of the modularity tests performed on the complete mandibles. n: sample size; CR:
 553 CR coefficient **or covariation** ratio, quantifying the degree of modularity; *p* value: empirically calculated
 554 *p* value from the resampling procedure; Effect size: the multivariate effect size associated with **the**
 555 **covariance ratio**.

556

	n	Shape			Allometry-free shape		
		CR	<i>p</i> value	Effect size	CR	<i>p</i> value	Effect size
Ancient dog	127	0.60	0.002	-15.2	0.60	0.002	-15.0
Modern dog	66	0.85	0.002	-12.8	0.85	0.002	-12.7
Ancient wolf	4	0.94	0.002	-11.7	0.93	0.002	-12.6
Modern wolf	8	0.88	0.002	-13.0	0.86	0.002	-14.6
Modern dingo	8	0.82	0.002	-14.2	0.83	0.002	-14.1

557