



HAL
open science

InterMob: a 24-month randomised controlled trial comparing the effectiveness of an intervention including behavioural change techniques and free transport versus an intervention including air pollution awareness-raising on car use reduction among regular car users living in Grenoble, France

Claudia Teran-Escobar, Sarah Duché, Hélène Bouscasse, Sandrine Isoard-Gauthier, Patrick Juen, Lilas Lacoste, Sarah Lyon-Caen, Sandrine Mathy, Estelle Ployon, Anna Risch, et al.

► **To cite this version:**

Claudia Teran-Escobar, Sarah Duché, Hélène Bouscasse, Sandrine Isoard-Gauthier, Patrick Juen, et al.. InterMob: a 24-month randomised controlled trial comparing the effectiveness of an intervention including behavioural change techniques and free transport versus an intervention including air pollution awareness-raising on car use reduction among regular car users living in Grenoble, France. *BMC Public Health*, 2022, 22 (1), 10.1186/s12889-022-14099-4 . hal-03781415

HAL Id: hal-03781415

<https://hal.science/hal-03781415>

Submitted on 20 Sep 2022

HAL is a multi-disciplinary open access archive for the deposit and dissemination of scientific research documents, whether they are published or not. The documents may come from teaching and research institutions in France or abroad, or from public or private research centers.

L'archive ouverte pluridisciplinaire **HAL**, est destinée au dépôt et à la diffusion de documents scientifiques de niveau recherche, publiés ou non, émanant des établissements d'enseignement et de recherche français ou étrangers, des laboratoires publics ou privés.




Distributed under a Creative Commons Attribution 4.0 International License

STUDY PROTOCOL

Open Access



InterMob: a 24-month randomised controlled trial comparing the effectiveness of an intervention including behavioural change techniques and free transport versus an intervention including air pollution awareness-raising on car use reduction among regular car users living in Grenoble, France

Claudia Teran-Escobar^{1,2*} , Sarah Duché², H  l  ne Bouscasse³, Sandrine Isoard-Gatheur¹, Patrick Juen², Lilas Lacoste^{1,2}, Sarah Lyon-Caen⁴, Sandrine Mathy⁵, Estelle Ployon², Anna Risch⁵, Philippe Sarrazin¹, R  my Slama⁴, Kamila Tabaka², Carole Treibich⁵, Sonia Chardonnel^{2,4**†} and Aina Chalabaev^{1*†}

Abstract

Background: Frequent car use contributes to health and environmental issues such as air pollution, climate change and obesity. Active and sustainable mobility (bike, walk, public transport, car sharing) may address these issues. Different strategies have been implemented in past research, involving *hard* levers, aimed at modifying the economic or geographical context (e.g., free public transport), and *soft* levers, aimed at modifying psychological processes (e.g., personalised transport advice). However, few studies have combined both hard and soft levers. In addition, few have used robust methodologies (e.g., randomised controlled trials), followed behavioural changes in the long-term, and been anchored in behaviour change theories. InterMob aims to address these limits by implementing a 24-month randomised controlled trial including *hard* and *soft* levers. The objectives of InterMob are to a) evaluate

[†]Sonia Chardonnel and Aina Chalabaev contributed equally to this work.

*Correspondence: claudia.teran-escobar@univ-grenoble-alpes.fr; sonia.chardonnel@univ-grenoble-alpes.fr; aina.chalabaev@univ-grenoble-alpes.fr

¹ Univ. Grenoble Alpes, SENS, 38000 Grenoble, France

² Univ. Grenoble Alpes, CNRS, Sciences Po Grenoble, PACTE, 38000 Grenoble, France

⁴ Team of Environmental Epidemiology Applied to Development and Respiratory Health, Institute for Advanced Biosciences (IAB), Universit   Grenoble Alpes, Inserm, CNRS, 38700 La Tronche, France
Full list of author information is available at the end of the article



the effectiveness of an experimental arm versus an active controlled arm, and b) identify the processes of mobility change.

Methods: Regular car users living in Grenoble ($N = 300$) will be recruited and randomised to one of the two arms. The experimental arm consists in a six-month intervention combining *hard* levers (free access to transport/bikes), and *soft* levers (e.g., personalised transport advice). The control arm consists in a six-month intervention aimed at raising awareness on air pollution and its health effects. Both arms will include eight evaluation weeks (spread out over 24 months) based on a GPS, an accelerometer, and a pollution sensor. Moreover, participants will complete mobility logbooks and surveys measuring psychological constructs, socio-economical, and socio-spatial characteristics.

Discussion: InterMob will assess the effectiveness of two interventions aimed at reducing car use within regular car users in the short-, mid- and long-term. Moreover, InterMob will allow to better understand the psychological processes of behaviour change, and the socio-economical and geographical conditions under which the intervention is efficient in reducing car use. Finally, the benefits of mobility change in terms of physical activity, quality of life, and exposure to pollution will be quantified.

Trial registration: [ClinicalTrials.gov](https://clinicaltrials.gov/ct2/show/study/NCT05096000): NCT05096000 on 27/10/2021 (retrospectively registered).

Keywords: Daily mobility, Spatial organisation, Psychology, Car use, Active mobility, Sustainable mobility, Behaviour change, Health, Air pollution, RCT

Background

Daily car use contributes to major health and environmental issues. Motorised transport represents an important source of air pollution, noise and greenhouse gases [1–3]. Moreover, regular car users present lower levels of physical activity [4], spend more time in sedentary behaviours [5], and have a higher risk of being obese or overweight [6, 7]. In turn, air pollution, climate change and physical inactivity represent important dangers to human health and life expectancy [8–11]. Nevertheless, despite all the negative consequences of daily car use, the car remains the main mode of transport in most countries (e.g., in France, 63% of daily trips are made by car, [12]).

Active and sustainable mobility such as cycling, walking, public transport and carpooling have in contrast positive effects on health and well-being. These modes of transport are associated with higher levels of physical activity [13–16], greater well-being [17], better work performances [18], and a higher life expectancy [19]. In addition, these transport modes might represent an effective lever to tackle air pollution and climate change [20, 21]. Nevertheless, active and sustainable mobility are less frequently used than the car for daily mobility (i.e., in France, 37% of daily trips are made by using an active and sustainable mobility, [12]).

Strategies for car use reduction, active and sustainable mobility promotion

During the last years, many interventions have been developed to reduce car use and promote active and

sustainable mobility. They can be distinguished based on whether they involve *hard* or *soft* levers [22].

Hard levers are strategies that target a change in the geographical and economic context of individuals to encourage them to reduce car use and/or increase active mobility. Hard-lever interventions include for example the implementation of low-emission zones (i.e., restricting the entry of polluting motorised transport into an established area), free public transport, city tolls or new cycling and walking infrastructures [23–26]. Results indicate that in general, *hard* levers seem to increase the use of active and sustainable mobility and reduce car use (e.g., implementing a payment for entering to the city centre reduces between 12 and 33% of city-centre cars in European cities, 24, infrastructural interventions in high-income countries increased in median relative, 22% of cycling behaviour compared to the baseline, [26]).

Soft levers are strategies that target a change in psychological factors associated with mobility, such as individual's intention to use active modes of transport, self-efficacy and attitudes towards active mobility, mobility habits, etc. In the behaviour change literature, these levers refer to behaviour change techniques [27]. In the field of mobility, some examples of behaviour change interventions are those proposing personalised transport advice, prompting mobility change goal setting and action planning, furnishing maps, transport schedules and other written materials (for reviews, see [28–30]). The results concerning *soft* levers are more heterogeneous. While a meta-analysis and some systematic reviews show a lack of rigorous studies to allow a conclusion about the effects of these interventions (e.g., [28, 30, 31]).

While past interventions have shown promising results, most of them share the same limitations. First, few studies rely on “robust” methodologies such as randomised controlled trials comparing the effects of an experimental intervention vs. a control intervention (e.g., only 14 studies among 77 studies were identified being “robust”, [31]). Second, few studies were anchored in behaviour change theories, and few describe the behaviour change techniques that were used to elaborate the intervention (e.g., [32–34]). Third, most of the studies use only self-reported measures and no in situ sensors to measure behaviour (except from some exceptions like [35, 36]). Fourth, few studies have mid- and long-term follow-ups (3 months after the intervention or more, e.g., [32, 34, 37–39]). Fifth, most studies focused on only one type of lever, either *hard* or *soft* (e.g., only five interventions among 30 studies were identified as having combined soft and hard levers, [30]). InterMob study aims to address all of these limits.

InterMob study

InterMob is a study that is part of the interdisciplinary MobilAir project that seeks to reduce air pollution in Grenoble, France [40]. More precisely, InterMob study combines concepts and methods from geography, psychology, economics, and epidemiology, with the aim to reduce car use and promote active and sustainable mobility in the Grenoble metropolitan area. InterMob seeks to address the aforementioned limitations by being anchored in behaviour change theories (see Fig. 1). It also relies on a rigorous methodology (a randomised controlled study comparing an experimental and a control group). In addition, it proposes a longitudinal follow-up (8 weeks of measurement spread over 24 months), the experimental intervention contains *hard* and *soft* levers (e.g., free transport and behaviour change techniques), and it combines in situ objective measures and self-reported measurements, in order to collect data on mobility behaviours (e.g., through GPS sensors) as well as on their correlates (e.g., through questionnaires assessing intentions, habits, sociodemographic characteristics,

etc.). Moreover, the content of the experimental group is elaborated by mobilising evidence- and theory-based approaches. Indeed, interventions that rely on a theoretical approach appear to be associated with larger effect sizes [41] and more consistent effects [42]. The active control arm includes sensibilisation to air pollution risks (*soft* lever). It targets attitudes, which have been identified as a factor of behavioural intention (e.g., theory of planned behaviour). Such behaviour change technique is expected to be less efficient in changing mobility behaviours than the techniques included in the experimental arm, the latter targeting more directly the intention-behaviour gap.

In conclusion, InterMob is a 24-months randomised controlled trial, parallel group, two-arm, superiority trial with 1:1 allocation ratio.

The objectives of the study are to:

- a) Evaluate the effectiveness of the InterMob intervention in reducing car use in the short- and in the long-term (one, three, seven, twelve, and twenty-four months after the beginning of the intervention).
- b) Identify the mechanisms underlying mobility behaviours and behaviour change (e.g., psychological constructs such as intentions, self-efficacy, habits).
- c) Identify the moderators of mobility change (i.e., the conditions and contexts under which the intervention is effective such as family context, degree of cyclability, trip chaining, work situation, activities organisation in space and time).

Procedure for elaborating, implementing, and evaluating a theory- and evidence-base behavioural intervention

To ensure the theory- and evidence-based character of the study, we followed a framework summarising the methodologies and recommendations already used in health psychology [43–46] (see Fig. 1).

First, we reviewed the literature on the associations between air pollution, physical inactivity, and mobility behaviours. Then, we undertook a literature review in

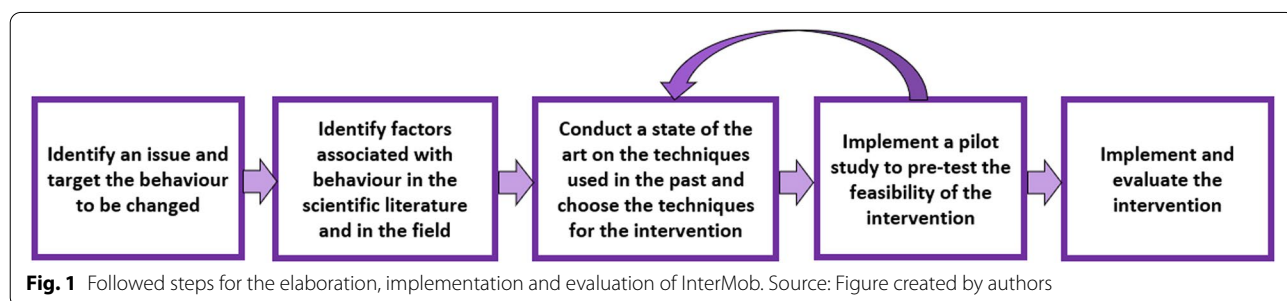


Fig. 1 Followed steps for the elaboration, implementation and evaluation of InterMob. Source: Figure created by authors

psychology and geography (e.g., [47–50]) on the factors underlying daily mobility behaviour. Third, we carried out an interdisciplinary literature review to identify the strategies that have been successful in reducing car use and increasing active and sustainable mobility [25, 28, 30, 51]. Fourth, we conceived a first version of the InterMob intervention, and conducted a pilot study to test its feasibility. Finally, we established the definitive version of InterMob that is detailed in this article. The present article follows the SPIRIT 2013 Guidance for protocols of critical trials [52, 53].

Methods

Ethics and data protection

The Fig. 2 shows the details of the ethics and data protection process. First, InterMob study received the ethic’s approval from Grenoble Alpes Research Ethics Committee (CERGA) in January 2019 (File CER Grenoble Alpes-Avis-2019-01-29-2). Moreover, as part of the application to the Ethics Committee, we carried out a Privacy Impact Assessment (PIA) to assess and avoid any potentially negative impacts of InterMob study on participants’ data privacy. This procedure involved setting a discussion group with the data protection officer of the University, the people in charge of the data infrastructure at the university, and relevant representatives of the target population (members of a car-sharing platform, a local

energy and climate agency, and a member of a pedagogical program about air pollution). During the discussion group, we talked about the potential implications of the data-collection tools (e.g., GPS sensors, detailed surveys that include data on psychological constructs as well as the geographic and socio-demographic context), and we detailed the proposed procedures and elements to ensure the respect of the General Data Protection Regulation (RGPD).

Participants

Study setting

To detect the effects of InterMob study on car use reduction, recruitment will be restricted to individuals living and working in the Grenoble metropolitan area (see Fig. 3), an urban area of south-eastern France (in the Alps) with a population size of approximately 600,000 people. The topography of this area is characterised by being flat in the valleys (especially the Grenoble city) and surrounded by mountains (suburban areas). Car is the main transport mode for daily trips (53% of daily trips in the Grenoble metropolitan area are made by car, [54]).

Eligibility criteria

To take part in the InterMob study, participants will need to meet the following criteria:

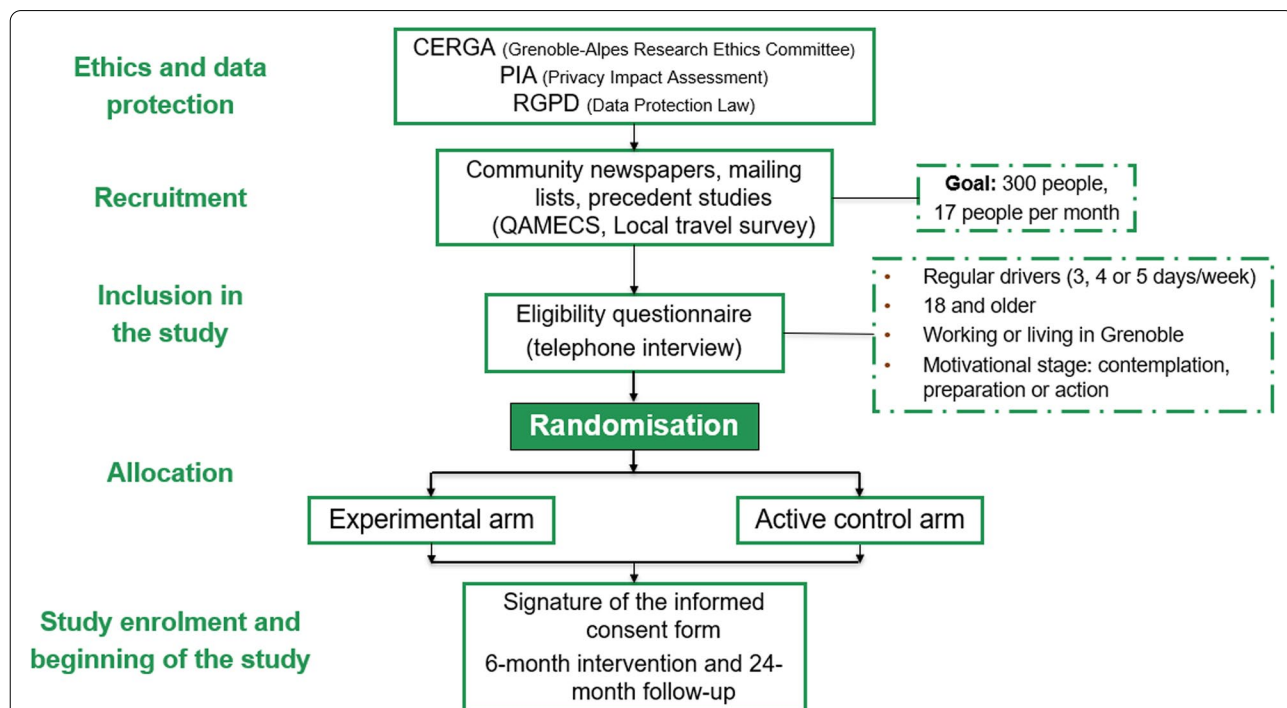


Fig. 2 Procedure of the InterMob study since the ethics and data protection procedures to the study enrolment and beginning of the study. Source: Figure created by authors

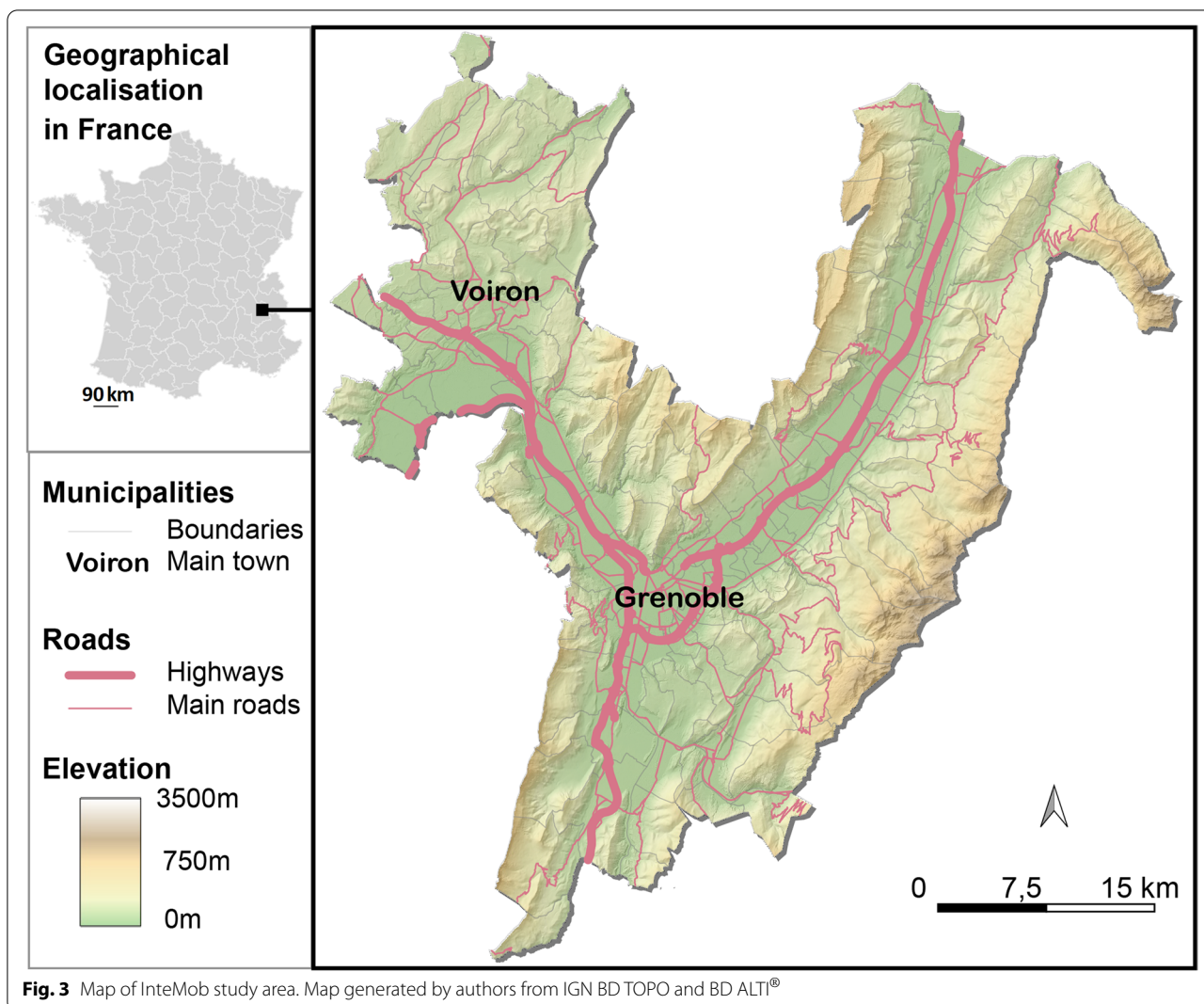


Fig. 3 Map of InteMob study area. Map generated by authors from IGN BD TOPO and BD ALTI®

- Being 18 years and older at the time of the eligibility interview;
- Living, working, studying, in the Grenoble metropolitan area;
- Having a car or motorbike as the main transport mode during the week (excluding the weekends);
- Travelling at least 3 days a week (excluding the weekends) by car or motorbike;
- Motivated to reducing car use for daily trips, or having already started this reduction (i.e., being in the contemplation, preparation or action stages of change according to [55, 56]);
- Expecting to stay in the Grenoble metropolitan area for the duration of the study (24 months).

All the eligibility criteria have been established by considering theoretical and practical aspects. For instance, theories in psychology suggest that participants who

intend to change their behaviours do not need the same behavioural techniques than those not having such intention (e.g., [57, 58]). More precisely, one of the main goals of behaviour change approaches is to help people to overcome the intention-behaviour gap [59].

Participant timeline

Recruitment, allocation, and blinding

The participants will be recruited through different sources: mailing lists from former studies conducted by the research team (QAMECS-SHS and EMC² 2019–2020, local travel surveys, surveys from other laboratories and projects), publicity in local events related to transport or environment, publicity in community newspapers, interventions with the mobility referents of companies in the Grenoble region and, social networks (e.g., Facebook, LinkedIn and Instagram). The people that will be interested to participate in the InterMob study will fill

up an online form in order to be contacted by a member of the implementation team (the information in this form includes the first name, a telephone number, an email address, municipality of residence, sex, age, educational attainment and the availability for receiving a phone call). The implementation team will call interested people to explain the study procedure and to administer the eligibility questionnaire. A few days later, the implementation team will call again the eligible people to ask if they accept to participate in the study. If a participant accepts, she/he will be randomly allocated to the experimental or active control arm. For this allocation, a randomisation list for the whole study was created by blocks of six before the beginning of the enrolment (i.e., it exists three possibilities to be in the experimental arm and three possibilities to be in the active control arm) by a member of the scientific team. The list was implemented in the management tool software developed by the team with WebDev for the study. The management tool automatically assigns each eligible participant to a group (the n-th participant is assigned to the group corresponding to the n-th position of the list).

Concerning blinding, the implementation team (programme implementers) will not be aware of group allocation at baseline (S0), but blinding will be impossible afterward, as the programme implementers deliver different contents to each arm through face-to-face interviews with participants. The researchers will not be aware of group allocation at any time, and the researchers responsible for analysing the data will be blinded to the treatment allocation. Double blinding will not be possible given that allocation concealment is impossible for participants in such an intervention.

Timeline of the study

Participants enrolled in the study will have a first two hours with a programme implementer (“Session 0” or

S0, see Fig. 4). At the beginning of this meeting, the participant reads and signs an informed consent form (cf. Supplementary materials). She/he fills up a first questionnaire assessing her/his quality of life, biometrics, mobility behaviours, the weekly duration of moderate-to-vigorous physical activity, socio-demographic information and psychological constructs 1, 2 and 3, as well as a mobility logbook assessing her/his last week mobility (for more details about the tools and surveys, see Table 1). Then, the implementation team explains how to correctly carry the Sensedoc™ and MicroPem™ sensors (see Fig. 5), and the participant is instructed to start carrying them from the next 7 days. At the end of the session, the sensors are collected by the programme implementer. Moreover, during this session, the participants receive a daily survey on their telephones measuring psychological constructs 4. Two weeks after S0, the participants have the first intervention appointment (S0+) that will be described in the intervention subsection.

Approximately 1 month after the beginning of the study, participants have the second meeting of the intervention (1 hour) and start a new session of measurement (S1). During this session, they carry a Sensedoc™ and answer the same surveys as in S0. Approximately 3.5 months after the start of the study, the participants have the third session (S2) containing the same elements as in S0 except for the pollution sensor. Then, about 7 months after the start of the study, the intervention is finished and immediately after the end of the intervention, the participants have the fourth session (S3) during which they carry the Sensedoc™ and the MicroPem™ and answer the same surveys as in S0. Around 9 months after the start of the study, participants start the fifth session (S4), they do not carry any sensors but fill up a mobility logbook and answer the same as in S0. Twelve months after the start of the study, participants start the sixth session (S5) with the same protocol as S4. Eighteen

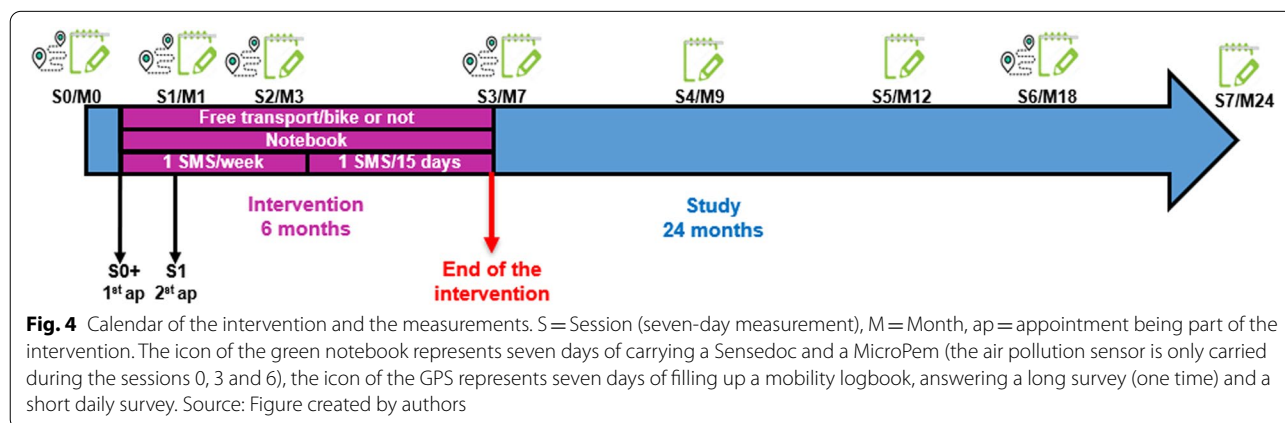
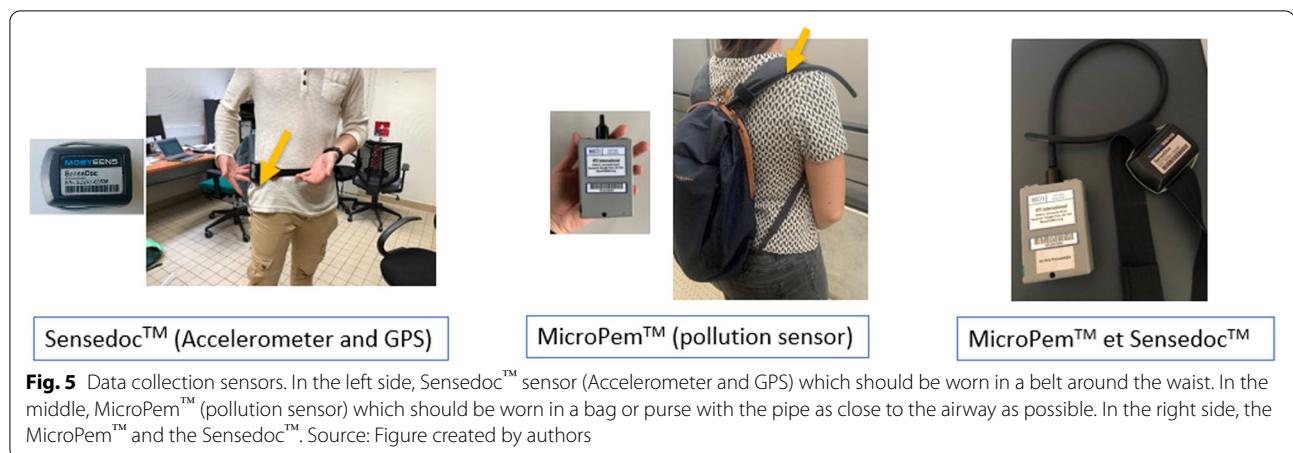


Fig. 4 Calendar of the intervention and the measurements. S = Session (seven-day measurement), M = Month, ap = appointment being part of the intervention. The icon of the green notebook represents seven days of carrying a Sensedoc and a MicroPem (the air pollution sensor is only carried during the sessions 0, 3 and 6), the icon of the GPS represents seven days of filling up a mobility logbook, answering a long survey (one time) and a short daily survey. Source: Figure created by authors

Table 1 (continued)

Outcome	Tool	Time measurement										
		R	S0	S0+	S1	S2	S3	S4	S5	S6	S7	
Tentation and conflict	Adapted survey [71]		✓ ^b		✓ ^b	✓ ^b	✓ ^b	✓ ^b	✓ ^b	✓ ^b	✓ ^b	✓ ^b
Reach of the intervention	Ratio of contacted people, eligible and enrolled people	✓ ^c										
Quality of the implementation	Checklist for every intervention meeting (answered by the programme implementer)			✓ ^c								

Note. By default, the outcomes were measured by using a survey that was filled in at the beginning of the session. S = Seven-day measurement session (except from S0+ that indicated the first intervention meeting), R = Recruitment and enrolment periods. ^a indicates that the outcome was measured with a sensor, ^b indicates that the outcome was measured on a daily basis, ^c indicates that the outcome was calculated by a member of the research team based on other data



months after starting the study, participants start the seventh session (S6) following the same protocol as S0. Finally, 24 months after starting the study, participants start the eighth session (S7) and follow the same protocol as S4 and S5 (see Fig. 4).

All the sessions are scheduled with our management tool by considering the availability of the programme implementers. This internal tool is central to implement and chart all steps of the intervention.

Retention of participants

To limit the attrition risk, the implementation team will send a newsletter including information about the study (e.g., recruitment ratios) and the research team (interviews, recommended scientific articles) a few times a year. Moreover, participants taking part in the study until the session 2 will be drawn to win a connected watch.

Power analysis and sample size

Sample size is difficult to estimate when using multilevel modelling as in the present study, given that sample size calculation is sensitive to the values of all the fixed and random parameters included in the models. As such, we estimated the sample size based on the expected effect size of the intervention at the end of the intervention only, which was an expected difference of 17% of the trips made by car at the end of the intervention [72] between the experimental and the control group. With a significance level of 0.05 and a statistical power of 80%, the a priori power analysis conducted with G*Power 3.1.9.4 [73, 74] indicated that 150 participants per arm (a total of 300 participants) are necessary for finding a difference of 17% between the experimental and the control arms at the end of the intervention. We will therefore recruit participants until exhaustion of our financial and human resources, with this ideal target of 150 participants per

arm. Once recruitment is finished, we will compute the minimal statistically detectable effect that can be observed based on the final number of participants [75].

Interventions

Eligible participants will be randomised in equal proportion to the experimental arm or to the active control group. The duration of both interventions will be the six first months of the 24-month study period (Fig. 4). The detailed content of each arm will be described in the next subsections.

Experimental arm

The participants attributed to the experimental arm will receive a free six-month transport pass and/or a six-month free access to a classic or electric bike (behavioural technique classified as “12.5 Adding objects” according to [27]). They will have two meetings with a programme implementer who will deliver behavioural change techniques, including a discussion about the motivation to change (behavioural techniques known as “motivational interviewing” and “5.2 salience of consequences” according to [27, 76]), personalised transport advice (behavioural technique classified as “4.1 Instructions on how to perform the behaviour” according to [27]), a mobility change goal setting and action planning (behavioural techniques classified as “1.1 Goal setting” and “1.4 Action planning” according to [27]), and obstacles’ prevention (behavioural technique classified as “1.2 Problem solving” according to [27]).

More precisely, during the first intervention appointment with the programme implementer called “S0+” (1.5 hours), the participant and the programme implementer will discuss about the motivations to change, they will work together on a personalised transport advice considering the participant’s needs, constraints and

preferences, the participant will set some change goals and elaborate an action plan, and he/she will examine the possible obstacles to change and how to prevent them. During the second meeting (1 hour, see Fig. 4), the programme implementer and the participant will assess and adapt the previously established goals, they will work on an updated personalised transport advice (if the participants ask for it), and on resolving any obstacles they met since the first meeting that have not been resolved.

Following the first meeting of the intervention, participants will be prompt to fill up a “goal notebook” during the 6 months of the intervention, by setting or reviewing their goals every 2 weeks, and by taking notes of the experienced obstacles. In addition, they will receive weekly SMS during the first 3 months of the intervention, and bimonthly SMS during the last 3 months of the intervention, to a) prompt goal setting and try to keep the same contexts for the goals like the same trips or the same transport modes (behavioural techniques classified as “1.7 Review outcome” and “8.2 Habit formation” according to [27]) and b) prompt self-monitoring related to the consequences of mobility change (e.g., a more important well-being; behavioural technique classified as “2.4 Self-monitoring of outcomes” according to [27]).

Active control arm

The participants in the active control arm will also have two meetings with a programme implementer, of the same duration as in the experimental arm. During the first 1.5 hour meeting “S0+”, the programme implementer and the participant will discuss about air

pollution (i.e., definition of air pollution sources, population most impacted, air pollution levels in Grenoble, health consequences of pollution and pollution peaks), about the association between air pollution and mobility (i.e., participants and programme implementer discuss about the exposure of car drivers and bike drivers to air pollution), and about the advantages of commuting by car (behavioural technique classified as “5.2 Saliency of consequences” according to [27]). During the second 1-hour meeting, the participant and the programme implementer will discuss of the air quality of the last weeks and check if there were some pollution peaks during the last weeks (behavioural technique classified as “5.2 Saliency of consequences” according to [27]).

Following the first meeting, participants will be prompt to fill up an “observation notebook” during the 6 months of intervention, by taking notes of air quality and of every announcement of pollution peak every 2 weeks. In addition, they will receive weekly SMS during the first 3 months of the intervention, and bimonthly SMS during the last 3 months of the intervention, to prompt taking notes of a) air quality and b) any pollution peak announced in the television/radio/telephone (see Table 2 for a summary of the interventions for the experimental and active control arms).

Adherence

To measure the adherence to each intervention arm, the programme implementer will take notes of the duration of each meeting and of every situation that could disrupt the planned content of the intervention (e.g., participants

Table 2 Summary of the elements of the experimental and the active control arms

Element	Experimental arm	Active control arm
Material incentive	6 months of free transport and/or 6 months of free access to a classic or an electric bike	
2 appointments with a programme implementer	First appointment: Discussion about the motivations to reduce car use, co-construction of a personalised mobility advice, mobility change goals setting, development of an action plan, prevention of obstacles to change mobility behaviour. Second appointment: Evaluation and adaptation of change goals and resolution of obstacles	First appointment: Concept of air pollution, in-depth questions on pollution (sources of air pollution, health consequences, pollution levels in Grenoble metropolitan area), discussion about the association between air pollution and car use and discussion about the benefits and advantages of the frequent use of the car Second appointment: Evaluation and discussion of the air quality and the identified pollution peaks
Notebook to be filled up	Goals notebook: 1. Setting new goals or adapting goals every two weeks 2. Taking notes of the experienced obstacles (if any) and looking for solutions	Observation notebook: 1. Taking note of the air pollution every two weeks 2. Taking note of the announced air pollution peaks (if any)
2 kinds of SMS (1 SMS per week during the first 3 months and 1 SMS bimonthly during the last six months)	1. Prompting the Setting and the Adaptation of goals, action planning and, habit formation 2. Self-monitoring of positive consequences of mobility change (e.g., better physical state, feeling of well-being)	1. Taking notes of the air pollution indices and comments 2. Taking notes of the announced air pollution peaks and comments

that do not receive any personalised transport advice). Moreover, one item in the deployed surveys will assess whether the participant sets goals (i.e., Intention implementation towards active mobility survey, see Table 1).

Outcomes and data collection

Primary outcome and data collection methods

The main outcome of InterMob study will be the reduction of car use measured by kilometres travelled by car and the modal share of the car. This outcome will be calculated from segmented and enhanced GPS tracks obtained from a sensor containing a triaxial accelerometer and a continuous GPS tracking MAX-M8 Global Navigation Satellite System receiver from u-blox (Sensedoc™ 2.0, see Fig. 5), and by a mobility logbook (i.e., a paper notebook collecting detailed information on the activities and trips made each day, such as departure and arrival times, the address of the arrival point; the transportation mode, the number of people making the trip with the participant). More precisely, The SenseDoc™ 2.0 acquires GPS data each second et accelerometry with a frequency of 60hz.

Secondary outcomes and data collection methods

Secondary outcomes will include the following variables associated with mobility behaviours: kilometres travelled by active and sustainable mobility, and the modal share of active mobility, physical activity measured by the Sensedoc™ 2.0 sensor and the IPAQ (i.e., International Physical Activity Questionnaire, [60]), exposure to air pollution (i.e., concentration of fine particles PM_{2.5} and oxidative potential) measured by an air pollution sensor (MicroPem™), activity programme measured by the mobility logbook and, quality of life measured by a survey [61] (see Fig. 5).

Mediators, moderators, and collection methods

We will investigate whether the effects of the intervention on mobility-related outcomes are mediated by several psychological constructs, including notably attitudes and self-efficacy towards the car [66], active mobility habits [65], motivational stages of mobility change [62] (see Table 1 for all the details), which will be collected by online surveys, using the platform Sphinx iQ2 v 7.3.1.0 (this platform is located at the university to ensure that the data remain in Europe as required by the European data protection law). Self-control constructs, including subjective vitality [70], temptation, conflict, and resistance [71], will be measured on a daily basis during the data collection weeks, through online surveys on the platform Sphinx iQ2 v 7.3.1.0 as well.

We will also investigate if the efficacy of the intervention depends on several socio-demographic and

geographic variables, including the number of children, number of cars, trip chaining, mobility biographies [77], cyclability and density of home address and destination address. They will be measured through the data collected by the online surveys, on the platform Sphinx iQ2 v 7.3.1.0.

Reach and quality of the implementation

The reach of the intervention (i.e., the number of people contacted by the implementation team, the number of eligible participants, and the enrolled participants) will be assessed by collecting the data from the first contact to the enrolment of participants. Finally, the quality of the implementation will be assessed by analysing a document filled up by the programme implementer at every appointment related to the intervention (i.e., a checklist for every task to be done during the S0+ and S1 appointments).

Data management and statistical methods

Data quality, management, storage, access and confidentiality

In order to monitor the quality of the data, one member of the implementation team and few members of the scientific team checks the correct completion of logbooks, online questionnaires, and the presence of missing data collected by the sensors.

Data from the sensors (Sensedoc™ and MicroPem™) are downloaded after each session to an encrypted computer and stored on a secure and back-up online storage. Data from the online surveys are downloaded twice a month on the same computer. Furthermore, data from all devices (contact forms, sensors, mobility logbooks and online surveys) will be structured and saved in two different blocks stored on distinct servers:

Block 1 will contain the contact file with the names, addresses and contact details of participants for setting the appointments and sending/recovering material. This file will be in the management tool, encrypted and kept separate from other data by the implementation team coordinator. The correspondence table between the code of the participants and their name will also remain in the management tool, a software as a service (SaaS) deployed on a specific server of the university infrastructure accessible only by the implementation team.

Block 2 will contain all the collected data from surveys and sensors. They will be stored locally, on the secured data centre of the university, with access restricted only to InterMob faculty members and implementation team, in line with data protection law. The raw data will be stored by the programme implementers. The data from the GPS/accelerometer and pollution sensors will be downloaded at each return from the field. The survey data, coming

from the Sphinx platform, will be regularly uploaded to the storage space. Only implementation team and informatician administrators will have read/write access. The scientific team will only have read access to raw data. Moreover, they have folders with data pre-processing and processing with read/write access, not accessible to the implementation team. Finally, another folder will be created for sharing with external partners.

Data monitoring, harms and auditing

No data monitoring committee has been set up for this study because there is no strong suspicion that the interventions can potentially harm the participants. Nevertheless, there is a risk that some travel modes (e.g., cycling) might lead to traffic accidents. For this reason and in order to protect the participants as much as possible, the helmets will be mandatory throughout the study. At the psychological level, some participants may experience guilt if they do not manage to reduce car use. In order to limit this risk, the team responsible for the implementation insists on a non-guilty and valorising communication and coaching during their face-to-face meetings with the participants (i.e., motivational interviewing). Moreover, participants will be encouraged to share with the implementation team any adverse events associated to mobility change. This information will be stored in a specific document by the coordinator of the implementation of the study.

The coordinator of the implementation of the study and the coordinators of the project have one meeting per week to audit the trial conduct.

Ancillary and post-trial care

No ancillary and post-trial care will be provided.

Statistical methods

Analysing the effects of the intervention on primary and secondary outcomes by using multilevel modelling The analysis of the effectiveness of the intervention on the primary outcome (reduction of car use, see "[Primary outcome and data collection methods](#)") and secondary outcomes (mobility-related variables described in the section "[Secondary outcomes and data collection methods](#)") will be examined at the very short term (3 months after the start of the intervention: S2), the short term (7 months after the start of the intervention: S3), the medium term (1 year after the start of the intervention: S5) and the long term (18 months after the start of the intervention: S6). More precisely, we will test the differences in car use reduction between the experimental arm and the active control arm, by using multilevel modelling, which is appropriate when data are nested, as it is the

case here with several measurement times per participant (e.g., [78]). Moreover, multilevel modelling offers the possibility to analyse incomplete data sets, which is particularly relevant given the duration of the study, which makes likely the occurrence of missing data [79]. For this purpose, we will follow the steps recommended by [80]:

- 1) Prepare the data by differentiating between- and within-individual constructs.
- 2) Centre the within-individual variables by participant (i.e., "group centring").
- 3) Create a first "constraint" model (a model containing all the random and fixed variables of the final model) and a "null" model including only the "intercept" equal to 1 and only one random variable associated with the identity of the participant (i.e., $1 | Id$) to check the intraclass correlation coefficients (ICC).
- 4) Build the main model.
- 5) Evaluate the normal distribution of residuals, Cooks distance and influential cases.

The main model will include the following fixed effects: arm, time, and arm x time interaction, with random intercepts for participants and random linear slopes for repeated measures at the participant level.

Moreover, the statistical analysis will follow intention-to-treat principles. This means that once a participant has been randomly assigned to an arm (i.e., experimental or control), his/her data will be included in the analysis [81]. More precisely, even if a participant has not adhered to the intervention or has not finished the study, his/her data will be included to all the analysis.

In addition, we will carry attrition analysis by comparing the characteristics of the participants that drop out the study and the participants that completed the study (e.g., compliance with eligibility criteria, sociodemographic and geographical characteristics).

Analysis of the mediators of the effects of the intervention To analyse the mechanisms explaining potential effects of the intervention on car use reduction and mobility-related variables, the investigators will use multilevel mediation models to test the mediating role of psychological constructs (e.g., intention toward active and sustainable mobility, active mobility habits, self-efficacy towards active mobility) in the intervention mobility-related variables relationships.

Analysis of the moderators of the effects of the intervention To analyse the possible moderators of the effects

of the intervention on car use reduction and mobility-related variables, the investigators will assess in multi-level models the statistical interactions between socio-demographic, geographic and psychological variables (e.g., number of children, travelled distances, accessibility of home and work, self-control variables) and the allocation to the experimental or control arm. This will allow identifying to what extent geographical, socio-demographic, and psychological variables moderate the effects of the intervention on car use reduction and mobility-related variables.

Discussion

InterMob study is a 24-month randomised controlled trial aiming to reduce car use of car and motorbike regular drivers. For this purpose, InterMob will include a two-arm intervention of 6 months: an experimental arm that combines the use of behaviour change techniques previously identified as being successful at changing mobility behaviour (e.g., personalised transport advice, goal setting, action planning) and free access to public transport or/and to a bike; and an active control arm which will target raising awareness about the consequences of air pollution and the link between air pollution and car use.

InterMob will aim to address the limitations of prior behaviour change interventions in the field, including lack of theory-based intervention elaboration, long-term follow-ups, high-quality methodologies (e.g., randomised controlled trial), and in situ measures [28, 58, 82–84]. By addressing these limitations, InterMob will allow deepening our knowledge of the long-term effects of a theory-based intervention tested in a 2-arm randomised controlled trial that combines *hard* and *soft* levers, with use of in situ measures of mobility and correlates.

Furthermore, we will aim to understand the psychological mechanisms that explain the potential effects of the proposed intervention on mobility, as well as the moderating role of geographical, socio-demographic, and psychological factors in this relationship, to better understand the conditions under which the intervention is effective.

Finally, InterMob study will measure the effects of the intervention not only on mobility change, but also on health-related outcomes such as physical activity and exposure to air pollution. Therefore, the results of our study might imply supplementary arguments for governments and politicians to promote car reduction and active and sustainable mobility, and deepen what has been modelled in past studies [85].

Abbreviation

GPS: Global Positioning System.

Supplementary Information

The online version contains supplementary material available at <https://doi.org/10.1186/s12889-022-14099-4>.

Additional file 1.

Acknowledgements

The authors thank the IDEX Univ. Grenoble Alpes, the IResP, the Auvergne-Rhône-Alpes Region, the SMAAG and, the Grenoble-Alpes Metropole.

Composition, roles, and responsibilities in the project

AC and SC are the scientific coordinators of the project. LL is the coordinator of the implementation of the study. CT-E elaborated and formulated the details of the intervention under the supervision of AC, SD, and SC. All authors developed the study concept, contributed to improving the study design and data collection, and approved the final version of this study.

Protocol version and protocol amendments

This version of the protocol (2.0) is dated 1 June 2022. Any changes in the protocol will be communicated and shared on [ClinicalTrials.gov](https://clinicaltrials.gov/ct2/show/NCT05096000) <https://clinicaltrials.gov/ct2/show/NCT05096000>

Dissemination policy

The results of the study will be published in scientific journals and open science platforms. In addition, the results of the study will be written up in a user-friendly style to be sent to all participants and partners of the study after the end of the study.

Authors' contributions

CT-E drafted the manuscript under the supervision of AC and SD. All the authors critically appraised the manuscript, worked on its content, and approved the final version for submission. AC and SC contributed equally to the conception and coordination of this article.

Funding

Intermob study is supported by the French National Research Agency in the framework of the "Investissement d'avenir" IDEX programme (ANR-15-IDEX-02) for the Mobil'Air research program. It also received support from the funding partners of the IResP (Institute for public health research) in the framework of the 2018 General call for projects - Prevention and Health Promotion strand (LI-CHALABAEV-AAP18-PREV-002), the Ambition Research Pack 2019 of the Auvergne-Rhône-Alpes Region, the SMAAG and, the Grenoble-Alpes Metropole. The funding sources had no role in determining the design nor the execution, analysis, or interpretation of the data.

Availability of data and materials

The anonymized and aggregated dataset and the codes used to analyse data will be available after the end of the data analysis in the open science framework: https://osf.io/9anpg/?view_only=3cba7f109a984abbbc4408fca0f8618 with the DOI <https://doi.org/10.17605/OSF.IO/9ANPG>.

Declarations

Ethics approval and consent to participate

InterMob study was approved by Grenoble-Alpes Ethics Committee (File CER Grenoble Alpes-Avis-2019-01-29-2) in January 2019. Moreover, each participant reads and signs a detailed informed consent form (cf. Supplementary materials) if he/she agrees to participate in InterMob study before starting the study.

Consent for publication

Not applicable.

Competing interests

The authors declare the following financial interests relationships which may be considered as potential competing interests: Free public transport and free access to conventional or electric bicycles (for the experimental arm) will be financed by Grenoble-Alpes Métropole, SMMAG and Région Auvergne-Rhône-Alpes that are key players in mobility, health, and environmental issues in Grenoble metropolitan area.

Author details

¹Univ. Grenoble Alpes, SENS, 38000 Grenoble, France. ²Univ. Grenoble Alpes, CNRS, Sciences Po Grenoble, PACTE, 38000 Grenoble, France. ³CESAER, Agrosup Dijon, INRAE, Bourgogne Franche-Comté Univ., Dijon, France. ⁴Team of Environmental Epidemiology Applied to Development and Respiratory Health, Institute for Advanced Biosciences (IAB), Université Grenoble Alpes, Inserm, CNRS, 38700 La Tronche, France. ⁵Univ. Grenoble Alpes, CNRS, INRAE, Grenoble INP, GAEL, 38000 Grenoble, France.

Received: 28 July 2022 Accepted: 31 August 2022

Published online: 16 September 2022

References

- CITEPA. Gaz à effet de serre et polluants atmosphériques. Bilans des émissions en France de 1990 à 2018: CITEPA; 2020. p. 1–459. [cited 2021 Feb 14]. Available from: <https://www.citepa.org/fr/secten/>
- van Schalkwyk MCI, Mindell JS. Current issues in the impacts of transport on health. *Br Med Bull*. 2018;125(1):67–77.
- WHO. Ambient (outdoor) air pollution: World Health Organization; 2018. [cited 2021 Feb 12]. Available from: [https://www.who.int/fr/news-room/fact-sheets/detail/ambient-\(outdoor\)-air-quality-and-health](https://www.who.int/fr/news-room/fact-sheets/detail/ambient-(outdoor)-air-quality-and-health)
- Chakrabarti S, Shin EJ. Automobile dependence and physical inactivity: insights from the California household travel survey. *J Transp Health*. 2017;6:262–71.
- Sugiyama T, Merom D, van der Ploeg HP, Corpuz G, Bauman A, Owen N. Prolonged sitting in cars: prevalence, socio-demographic variations, and trends. *Prev Med*. 2012 Oct;55(4):315–8.
- Frank LD, Andresen MA, Schmid TL. Obesity relationships with community design, physical activity, and time spent in cars. *Am J Prev Med*. 2004;27(2):87–96.
- Jacobson SH, King DM, Yuan R. A note on the relationship between obesity and driving. *Transp Policy*. 2011;18(5):772–6.
- Fuller R, Landrigan PJ, Balakrishnan K, Bathan G, Bose-O'Reilly S, Brauer M, et al. Pollution and health: a progress update. *The Lancet Planetary Health*. 2022;6(6):e535–47. [https://doi.org/10.1016/S2542-5196\(22\)00090-0](https://doi.org/10.1016/S2542-5196(22)00090-0).
- Guthold R, Stevens GA, Riley LM, Bull FC. Worldwide trends in insufficient physical activity from 2001 to 2016: a pooled analysis of 358 population-based surveys with 1.9 million participants. *Lancet Glob Health*. 2018;6(10):e1077–86.
- Kohl HW, Craig CL, Lambert EV, Inoue S, Alkandari JR, Leetongin G, et al. The pandemic of physical inactivity: global action for public health. *Lancet*. 2012;380(9838):294–305.
- Manisalidis I, Stavropoulou E, Stavropoulos A, Bezirtzoglou E. Environmental and health impacts of air pollution: A review. *Front Public Health*. 2020 Feb;20(8):14.
- SDES. Comment les Français se déplacent-ils en 2019 ? Résultats de l'enquête mobilité des personnes | Données et études statistiques: SDES; 2020. [cited 2021 Feb 15]. Available from: <https://www.statistiques.developpement-durable.gouv.fr/comment-les-francais-se-deplacent-ils-en-2019-resultats-de-lenquete-mobilite-des-personnes>
- Chaix B, Kestens Y, Duncan S, Merrien C, Thierry B, Pannier B, et al. Active transportation and public transportation use to achieve physical activity recommendations? A combined GPS, accelerometer, and mobility survey study. *Int J Behav Nutr Phys Act*. 2014;11(1):124. <https://doi.org/10.1186/s12966-014-0124-x>.
- Chaix B, Benmarhnia T, Kestens Y, Brondeel R, Perchoux C, Gerber P, et al. Combining sensor tracking with a GPS-based mobility survey to better measure physical activity in trips: public transport generates walking. *Int J Behav Nutr Phys Act*. 2019;16(1):84.
- Pucher J, Buehler R, Bassett DR, Dannenberg AL. Walking and cycling to health: A comparative analysis of City, state, and international data. *Am J Public Health*. 2010;100(10):1986–92.
- Rojas-Rueda D, de Nazelle A, Tainio M, Nieuwenhuijsen MJ. The health risks and benefits of cycling in urban environments compared with car use: health impact assessment study. *BMJ*. 2011;343(aug04 2):d4521.
- Martin A, Goryakin Y, Suhrcke M. Does active commuting improve psychological wellbeing? Longitudinal evidence from eighteen waves of the British household panel survey. *Prev Med*. 2014;69:296–303.
- Ma L, Ye R. Does daily commuting behavior matter to employee productivity? *J Transp Geogr*. 2019;76:130–41.
- Cepeda M, Schoufour J, Freak-Poli R, Koolhaas CM, Dhana K, Brammer WM, et al. Levels of ambient air pollution according to mode of transport: a systematic review. *Lancet Public Health*. 2017;2(1):e23–34.
- Bernard P, Chevance G, Kingsbury C, Baillot A, Romain AJ, Molinier V, et al. Climate change, physical activity and sport: A systematic review. *Sports Med*. 2021; [cited 2021 Apr 4]; Available from: <http://link.springer.com/10.1007/s40279-021-01439-4>.
- Brand C, Dons E, Anaya-Boig E, Avila-Palencia I, Clark A, de Nazelle A, et al. The climate change mitigation effects of daily active travel in cities. *Transp Res Part Transp Environ*. 2021;93:102764.
- Bamberg S, Fujii S, Friman M, Gärling T. Behaviour theory and soft transport policy measures. *Transp Policy*. 2011;18(1):228–35.
- Gärling T, Schuitema G. Travel demand management targeting reduced private Car use: effectiveness, public acceptability and political feasibility. *J Soc Issues*. 2007;63(1):139–53.
- Kuss P, Nicholas KA. A dozen effective interventions to reduce car use in European cities: lessons learned from a meta-analysis and transition management. *Case Stud Transp Policy*. 2022;10(3):1494–513. <https://doi.org/10.1016/j.cstp.2022.02.001>.
- Martin A, Suhrcke M, Ogilvie D. Financial incentives to promote active travel. *Am J Prev Med*. 2012;43(6):e45–57.
- Mölenberg FJM, Panter J, Burdorf A, van Lenthe FJ. A systematic review of the effect of infrastructural interventions to promote cycling: strengthening causal inference from observational data. *Int J Behav Nutr Phys Act*. 2019;16(1):93.
- Michie S, Richardson M, Johnston M, Abraham C, Francis J, Hardeman W, et al. The behavior change technique taxonomy (v1) of 93 hierarchically clustered techniques: building an international consensus for the reporting of behavior change interventions. *Ann Behav Med*. 2013;46(1):81–95. <https://doi.org/10.1007/s12160-013-9486-6>.
- Arnott B, Rehackova L, Errington L, Sniehotta FF, Roberts J, Araujo-Soares V. Efficacy of behavioural interventions for transport behaviour change: systematic review, meta-analysis and intervention coding. *Int J Behav Nutr Phys Act*. 2014;11(1):133.
- Möser G, Bamberg S. The effectiveness of soft transport policy measures: A critical assessment and meta-analysis of empirical evidence. *J Environ Psychol*. 2008;28(1):10–26.
- Semenescu A, Gavreliuc A, Sârbescu P. 30 years of soft interventions to reduce car use – A systematic review and meta-analysis. *Transp Res Part Transp Environ*. 2020;85:102397.
- Graham-Rowe E, Skippon S, Gardner B, Abraham C. Can we reduce car use and, if so, how? A review of available evidence. *Transp Res Part Policy Pract*. 2011;45(5):401–18.
- Aittasalo M, Rinne M, Pasanen M, Kukkonen-Harjula K, Vasankari T. Promoting walking among office employees — evaluation of a randomized controlled intervention with pedometers and e-mail messages. *BMC Public Health*. 2012;12(1):403.
- Fujii S, Taniguchi A. Reducing family car-use by providing travel advice or requesting behavioral plans: an experimental analysis of travel feedback programs. *Transp Res Part Transp Environ*. 2005;10(5):385–93.
- Mutrie N, Carney C, Blamey A, Crawford F, Aitchison T, Whitelaw A. 'Walk in to work out': a randomised controlled trial of a self help intervention to promote active commuting. *J Epidemiol Community Health*. 2002;56(6):407–12.
- Aittasalo M, Tiilikainen J, Tokola K, Suni J, Sievänen H, Vähä-Yppä H, et al. Socio-ecological natural experiment with randomized controlled trial to promote active commuting to work: process evaluation, behavioral impacts, and changes in the use and quality of walking and cycling paths. *Int J Environ Res Public Health*. 2019;16(9):1661.

36. Ben-Elia E, Ettema D. Carrots versus sticks: rewarding commuters for avoiding the rush-hour—a study of willingness to participate. *Transp Policy*. 2009;16(2):68–76.
37. Cellina F, Bucher D, Mangili F, Veiga Simão J, Rudel R, Raubal M. A large scale, app-based behaviour change experiment persuading sustainable mobility patterns: methods, results and lessons learnt. *Sustainability*. 2019;11(9):2674.
38. Hemmingsson E, Uddén J, Neovius M, Ekelund U, Rössner S. Increased physical activity in abdominally obese women through support for changed commuting habits: a randomized clinical trial. *Int J Obes*. 2009;33(6):645–52.
39. Thøgersen J. Promoting public transport as a subscription service: effects of a free month travel card. *Transp Policy*. 2009;16(6):335–43.
40. Mathy S, Bouscasse H, Chardonnel S, Chalabaev A, Gabet S, Treibich C, et al. Protocol of an Interdisciplinary and Multidimensional Assessment of Pollution Reduction Measures in Urban Areas: MobilAir Project. In: Buchholz W, Markandya A, Rübhelke D, Vögele S, editors. *Ancillary Benefits of Climate Policy*. Cham: Springer International Publishing; 2020. p. 325–45. [cited 2022 Jul 11]. (Springer Climate). Available from: http://link.springer.com/10.1007/978-3-030-30978-7_18.
41. Webb TL, Joseph J, Yardley L, Michie S. Using the internet to promote health behavior change: A systematic review and Meta-analysis of the impact of theoretical basis, use of behavior change techniques, and mode of delivery on efficacy. *J Med Internet Res*. 2010;12(1):e4.
42. McEwan D, Beauchamp MR, Kouvousis C, Ray CM, Wyrrough A, Rhodes RE. Examining the active ingredients of physical activity interventions underpinned by theory versus no stated theory: a meta-analysis. *Health Psychol Rev*. 2019;13(1):1–17.
43. Bartholomew LK, Markham C, Ruiter RA, Fernández ME, Kok G, Parcel GS. *Planning health promotion programs: An intervention mapping approach*, 2nd ed. 4th ed. San Francisco: Jossey-Bass; 2016. p. 678. (Planning health promotion programs: An intervention mapping approach, 2nd ed.)
44. Desrichard O, Moussaoui L, Cantarella M. GIMME-5: Geneva intervention Mapping : model and evaluation –5; 2016.
45. Hankonen N, Hardeman V. *Developing Behavior Change Interventions*. In: Hagger MS, Cameron LD, Hamilton K, Hankonen N, Lintunen T, editors. *The Handbook of Behavior Change*. 1st ed: Cambridge University Press; 2020. p. 300–17. [cited 2021 Apr 9]. Available from: https://www.cambridge.org/core/product/identifier/9781108677318%23CN-bp-21/type/book_part.
46. Michie S, van Stralen MM, West R. The behaviour change wheel: A new method for characterising and designing behaviour change interventions. *Implement Sci*. 2011;6(1):1–11.
47. De Witte A, Hollevoet J, Dobruszkes F, Hubert M, Macharis C. Linking modal choice to motility: A comprehensive review. *Transp Res Part Policy Pract*. 2013;49:329–41.
48. Ewing R, Cervero R. Travel and the built environment: A Meta-analysis. *J Am Plan Assoc*. 2010;76(3):265–94.
49. Lanzini P, Khan SA. Shedding light on the psychological and behavioral determinants of travel mode choice: A meta-analysis. *Transp Res Part F Traffic Psychol Behav*. 2017;48:13–27.
50. Van Acker V, Van Wee B, Witlox F. When transport geography meets social psychology: toward a conceptual model of travel behaviour. *Transp Rev*. 2010;30(2):219–40.
51. Bird EL, Baker G, Mutrie N, Ogilvie D, Sahlqvist S, Powell J, et al. Behavior change techniques used to promote walking and cycling: A systematic review. *Health Psychol*. 2013;32(8):829–38.
52. Chan AW, Tetzlaff JM, Altman DG, Laupacis A, Gøtzsche PC, Krleža-Jerić K, et al. SPIRIT 2013 statement: defining standard protocol items for clinical trials. *Ann Intern Med*. 2013;158(3):200.
53. Chan AW, Tetzlaff JM, Gøtzsche PC, Altman DG, Mann H, Berlin JA, et al. SPIRIT 2013 explanation and elaboration: guidance for protocols of clinical trials. *BMJ*. 2013;346(jan08 15):e7586.
54. SMMAAG. *L'enquête mobilité Grande Région Grenobloise : Premiers résultats: SMMAAG*; 2021. Available from: <https://www.aurg.fr/article/280/2205-mobilite-des-habitants-du-bassin-grenoblois-les-premiers-resultats-de-la-grande-enquete-emc2.htm>
55. Prochaska JO, Velicer WF, Rossi JS, Goldstein MG, Marcus BH, Rakowski W, et al. Stages of change and decisional balance for 12 problem behaviors. *Health Psychol*. 1994;13(1):39–46.
56. Prochaska JO, Redding CA, Evers KE. The transtheoretical model and stages of change. In: *Health behavior and health education: theory, research, and practice*. 4th ed. San Francisco: Jossey-Bass; 2008. p. 97–121.
57. Bamberg S. Applying the stage model of self-regulated behavioral change in a car use reduction intervention. *J Environ Psychol*. 2013;33:68–75.
58. Yang L, Sahlqvist S, McMinn A, Griffin SJ, Ogilvie D. Interventions to promote cycling: systematic review. *BMJ*. 2010;341(oct18 2):c5293.
59. Sheeran P, Webb TL. The intention-behavior gap: the intention-behavior gap. *Soc Personal Psychol Compass*. 2016;10(9):503–18.
60. Craig CL, Marshall AL, Sjöström M, Bauman AE, Booth ML, Ainsworth BE, et al. International physical activity questionnaire: 12-country reliability and validity. *Med Sci Sports Exerc*. 2003;35(8):1381–95.
61. Ware JE, Kosinski M, Keller SD. A 12-item short-form health survey: construction of scales and preliminary tests of reliability and validity. *Med Care*. 1996;34(3):220–33.
62. Biehl A, Ermagun A, Stathopoulos A. Modelling determinants of walking and cycling adoption: A stage-of-change perspective. *Transp Res Part F Traffic Psychol Behav*. 2018;58:452–70.
63. Buhler T. *Éléments pour la prise en compte de l'habitude dans les pratiques de déplacements urbains par: Institut National des Sciences Appliquées de Lyon*; 2012. Available from: <http://theses.insa-lyon.fr/publication/2012ISAL0087/these.pdf>
64. Lalot F, Quiazade A, Falomir-Pichastor JM, Gollwitzer PM. When does self-identity predict intention to act green? A self-completion account relying on past behaviour and majority-minority support for pro-environmental values. *J Environ Psychol*. 2019;61:79–92.
65. Gardner B, Abraham C, Lally P, de Bruijn GJ. Towards parsimony in habit measurement: testing the convergent and predictive validity of an automaticity subscale of the self-report habit index. *Int J Behav Nutr Phys Act*. 2012;9(1):102.
66. Godin G. *Les comportements dans le domaine de la santé: Comprendre pour mieux intervenir: Presses de l'Université de Montréal*; 2012. [cited 2020 Dec 15]. Available from: <http://books.openedition.org/pum/8822>
67. Nexøe J, Kragstrup J, Søgaard J. Decision on influenza vaccination among the elderly: A questionnaire study based on the health belief model and the multidimensional locus of control theory. *Scand J Prim Health Care*. 1999;17(2):105–10.
68. Ettema D, Gärling T, Eriksson L, Friman M, Olsson LE, Fujii S. Satisfaction with travel and subjective well-being: development and test of a measurement tool. *Transp Res Part F Traffic Psychol Behav*. 2011;14(3):167–75.
69. Boiché J, Gouylan M, Trouilloud D, Sarrazin P. Development and validation of the échelle de motivation envers l'Activité physique en contexte de Santé: A motivation scale towards health-oriented physical activity in French. *J Health Psychol*. 2019;24(3):386–96.
70. Ryan RM, Frederick C. On energy, personality, and health: subjective vitality as a dynamic reflection of well-being. *J Pers*. 1997;65(3):529–65.
71. Hofmann W, Baumeister RF, Förster G, Vohs KD. Everyday temptations: an experience sampling study of desire, conflict, and self-control. *J Pers Soc Psychol*. 2012;102(6):1318–35.
72. Brockman R, Fox KR. Physical activity by stealth? The potential health benefits of a workplace transport plan. *Public Health*. 2011;125(4):210–6.
73. Erdfelder E, FAul F, Buchner A, Lang AG. Statistical power analyses using G*power 3.1: tests for correlation and regression analyses. *Behav Res Methods*. 2009;41(4):1149–60.
74. Faul F, Erdfelder E, Lang AG, Buchner A. G*power 3: A flexible statistical power analysis program for the social, behavioral, and biomedical sciences. *Behav Res Methods*. 2007;39(2):175–91.
75. Lakens D. Sample Size Justification. *Collabra Psychol*. 2022;8(1):33267.
76. Hardcastle S, Blake N, Hagger MS. The effectiveness of a motivational interviewing primary-care based intervention on physical activity and predictors of change in a disadvantaged community. *J Behav Med*. 2012;35(3):318–33.
77. Müggenburg H, Busch-Geertsema A, Lanzendorf M. Mobility biographies: A review of achievements and challenges of the mobility biographies approach and a framework for further research. *J Transp Geogr*. 2015;46:151–63.

78. Boisgontier MP, Cheval B. The anova to mixed model transition. *Neurosci Biobehav Rev.* 2016;68:1004–5.
79. Judd CM, Westfall J, Kenny DA. Treating stimuli as a random factor in social psychology: A new and comprehensive solution to a pervasive but largely ignored problem. *J Pers Soc Psychol.* 2012;103(1):54–69.
80. Field A, Miles J, Field Z. *Discovering statistics using R* [internet]. SAGE. 2012:993 Available from: <http://choicereviews.org/review/10.5860/CHOICE.50-2114>.
81. McCoy E. Understanding the intention-to-treat principle in randomized controlled trials. *West J Emerg Med.* 2017;18(6):1075–8.
82. Petrunoff N, Rissel C, Wen LM. The effect of active travel interventions conducted in work settings on driving to work: A systematic review. *J Transp Health.* 2016;3(1):61–76.
83. Dixon D, Johnston M. What competences are required to deliver person-person behaviour change interventions: development of a health behaviour change competency framework. *Int J Behav Med.* 2021;28(3):308–17.
84. Hoffmann TC, Glasziou PP, Boutron I, Milne R, Perera R, Moher D, et al. Better reporting of interventions: template for intervention description and replication (TIDieR) checklist and guide. *BMJ.* 2014;348(mar07 3):g1687.
85. Bouscasse H, Gabet S, Kerneis G, Provent A, Rieux C, Salem NB, et al. Designing local air pollution policies focusing on mobility and heating to avoid a targeted number of pollution-related deaths: forward and backward approaches combining air pollution modeling, health impact assessment and cost-benefit analysis. *Environ Int.* 2022;159:107030.

Publisher's Note

Springer Nature remains neutral with regard to jurisdictional claims in published maps and institutional affiliations.

Ready to submit your research? Choose BMC and benefit from:

- fast, convenient online submission
- thorough peer review by experienced researchers in your field
- rapid publication on acceptance
- support for research data, including large and complex data types
- gold Open Access which fosters wider collaboration and increased citations
- maximum visibility for your research: over 100M website views per year

At BMC, research is always in progress.

Learn more biomedcentral.com/submissions

