



HAL
open science

Use of $^{87}\text{Sr}/^{86}\text{Sr}$ ratio as indicator of flowpaths on a large-scale instability: the Séchilienne landslide (Isère, France)

Pierre Nevers, Julien Bouchez, Jérôme Gaillardet, Catherine Bertrand

► To cite this version:

Pierre Nevers, Julien Bouchez, Jérôme Gaillardet, Catherine Bertrand. Use of $^{87}\text{Sr}/^{86}\text{Sr}$ ratio as indicator of flowpaths on a large-scale instability: the Séchilienne landslide (Isère, France). American Geophysical Union (AGU) Fall Meeting 2018, Dec 2018, Washington DC, United States. hal-03778727

HAL Id: hal-03778727

<https://hal.science/hal-03778727>

Submitted on 16 Sep 2022

HAL is a multi-disciplinary open access archive for the deposit and dissemination of scientific research documents, whether they are published or not. The documents may come from teaching and research institutions in France or abroad, or from public or private research centers.

L'archive ouverte pluridisciplinaire **HAL**, est destinée au dépôt et à la diffusion de documents scientifiques de niveau recherche, publiés ou non, émanant des établissements d'enseignement et de recherche français ou étrangers, des laboratoires publics ou privés.

See discussions, stats, and author profiles for this publication at: <https://www.researchgate.net/publication/357062836>

The use of $^{87}\text{Sr}/^{86}\text{Sr}$ ratios as indicator of flowpaths on a large-scale instability: the Séchilienne landslide (Isère, France). AGU Fall Meeting 2018, Washington D.C (USA).

Poster · December 2018

CITATIONS

0

READS

8

4 authors:



Pierre Nevers

University of Franche-Comté

9 PUBLICATIONS 21 CITATIONS

SEE PROFILE



Julien Bouchez

Institut de Physique du Globe de Paris

130 PUBLICATIONS 3,093 CITATIONS

SEE PROFILE



Jérôme Gaillardet

Institut de Physique du Globe de Paris

301 PUBLICATIONS 16,887 CITATIONS

SEE PROFILE



Catherine Bertrand

University of Franche-Comté

98 PUBLICATIONS 1,204 CITATIONS

SEE PROFILE

Some of the authors of this publication are also working on these related projects:



CRITEX [View project](#)



PROKARAAM : PROcessus de contrôle de l'altération des KARsts Andins Amazoniens [View project](#)

Use of $^{87}\text{Sr}/^{86}\text{Sr}$ ratio as indicator of flowpaths on a large-scale instability : the Séchilienne landslide (Isère, France)

Pierre Nevers¹, Julien Bouchez², Jérôme Gaillardet², Catherine Bertrand¹

1. UMR Chrono-Environnement 16 route de Gray, 25000 Besançon
2. Institut de Physique du Globe de Paris, 1 rue Jussieu, 75005 Paris

*contact : pierre.nevers@univ-fcomte.fr

STUDY SITE



FIG 1 : VIEWS OF THE SÉCHILIENNE LANDSLIDE (PHOTO CREDIT : SÉBASTIEN GOMMET, INSTITUT DES RISQUES MAJEURS)

Regarding the hydrogeology, water plays a significant role in the massif destabilisation.

Vallet et al (2015) as evidenced 4 water types which flow through the slope and which are different regarding to their location (figure 3).

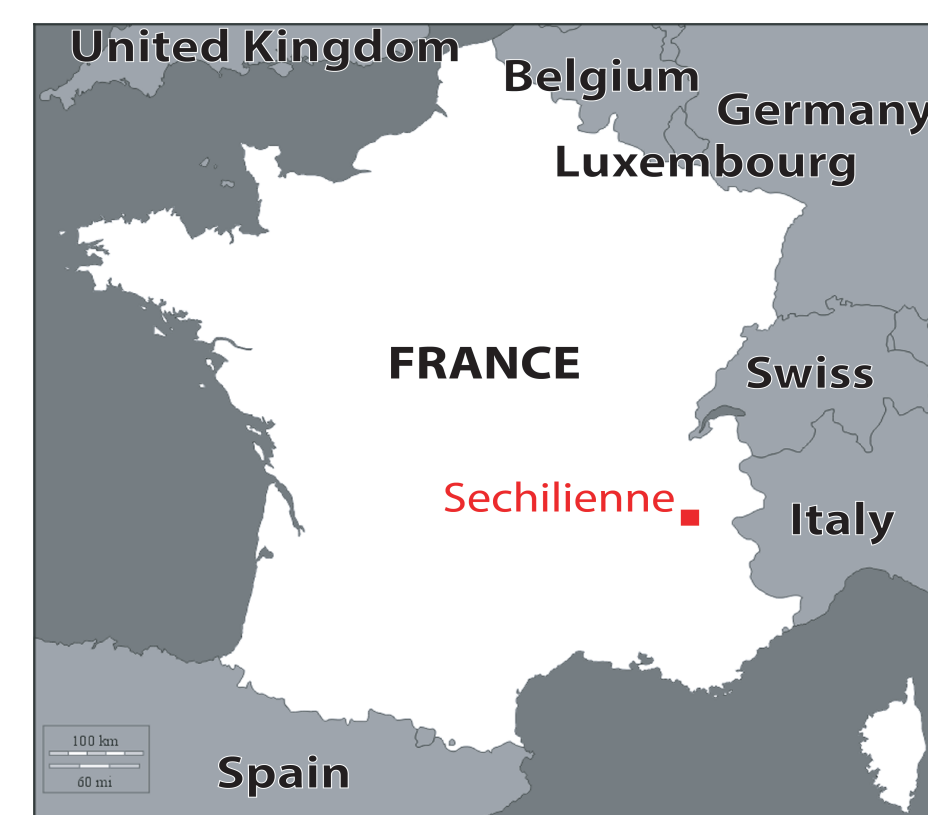


FIG 2 : LOCATION OF SÉCHILIENNE (ISÈRE, AUVERGNE RHÔNE-ALPES, FRANCE)

The Séchilienne landslide is located on the right bank of the Romanche River, South East of Grenoble (Isère, France). The active zone of the gravitational instability involves several millions of cubic meters.

The geology consists of fractured hard rocks (micaschists : external crystalline massif) with double permeability and strong spatial heterogeneities, covered by carbonates (Trias - Lias) deposits at the top of the slope (in purple in fig 3) . The slope is affected by major faults as the N20° Sabot and Sechilienne Faults.

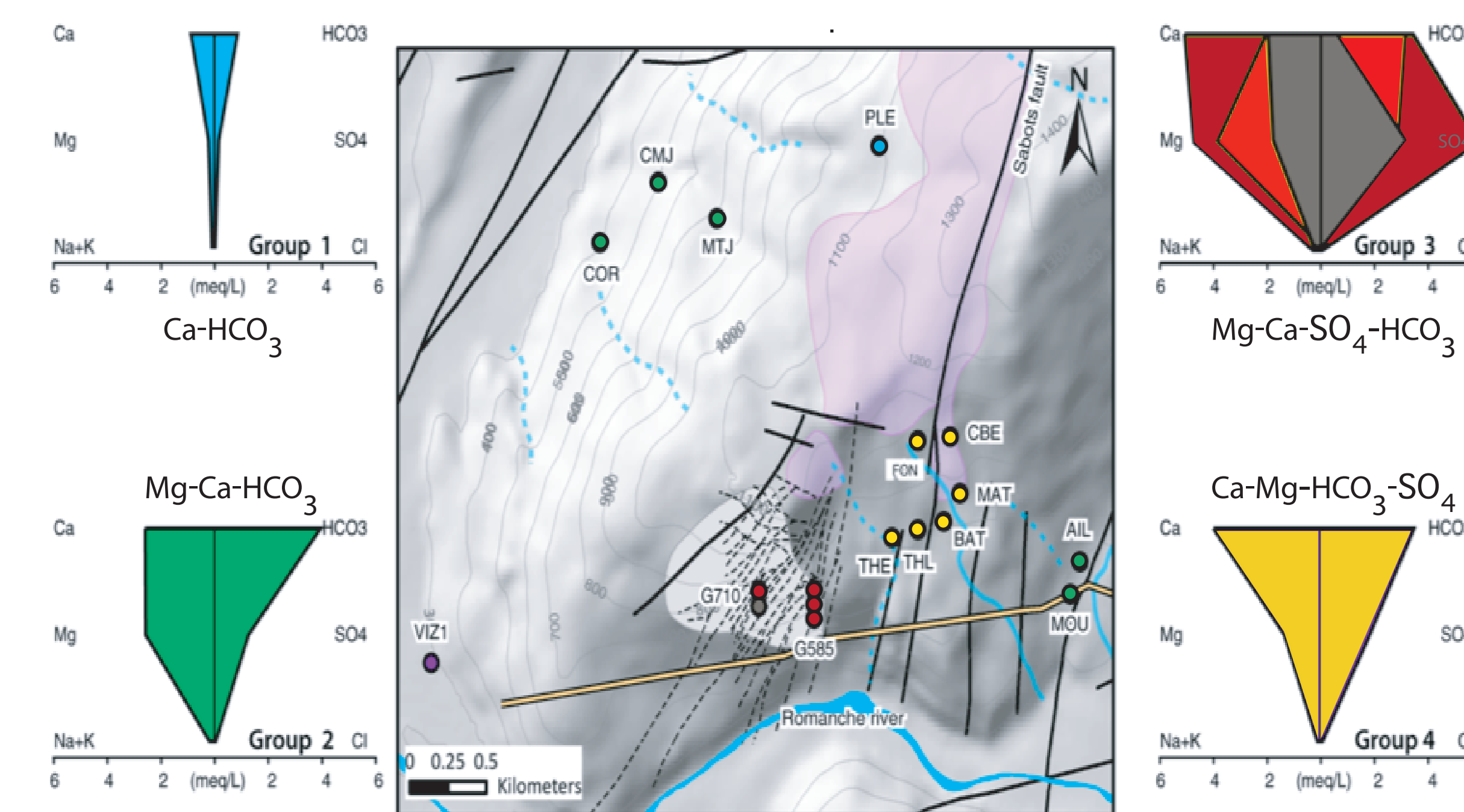


FIG 3 : SIMPLIFIED MAPS OF THE SÉCHILIENNE SLOPE WITH GEOLOGICAL ON HYDROGEOLOGICAL INFORMATIONS ; THE PURPLE LAYER REPRESENT THE CARBONATES COVER - STIFF DIAGRAMS ILLUSTRATE THE CHEMISTRY OF THE WATER

METHODS

Major elements chemistry and Sr isotopes were measured in different outflows draining both the stable and instable part of the Séchilienne instability (fig1 & 4).

Springs were sampled at 4 different periods in June 2014 - Novembre 2015 - Mai 2016 - August 2017.

Cations were analysed by Atomic Absorption Spectroscopy (AA 100 Perkin-Elmer), anions by Ionic Chromatography (Dionex DX100) and Isotopic ratios were obtained using Multicollector Inductively Coupled Plasma Mass Spectrometer (MC-ICPMS).

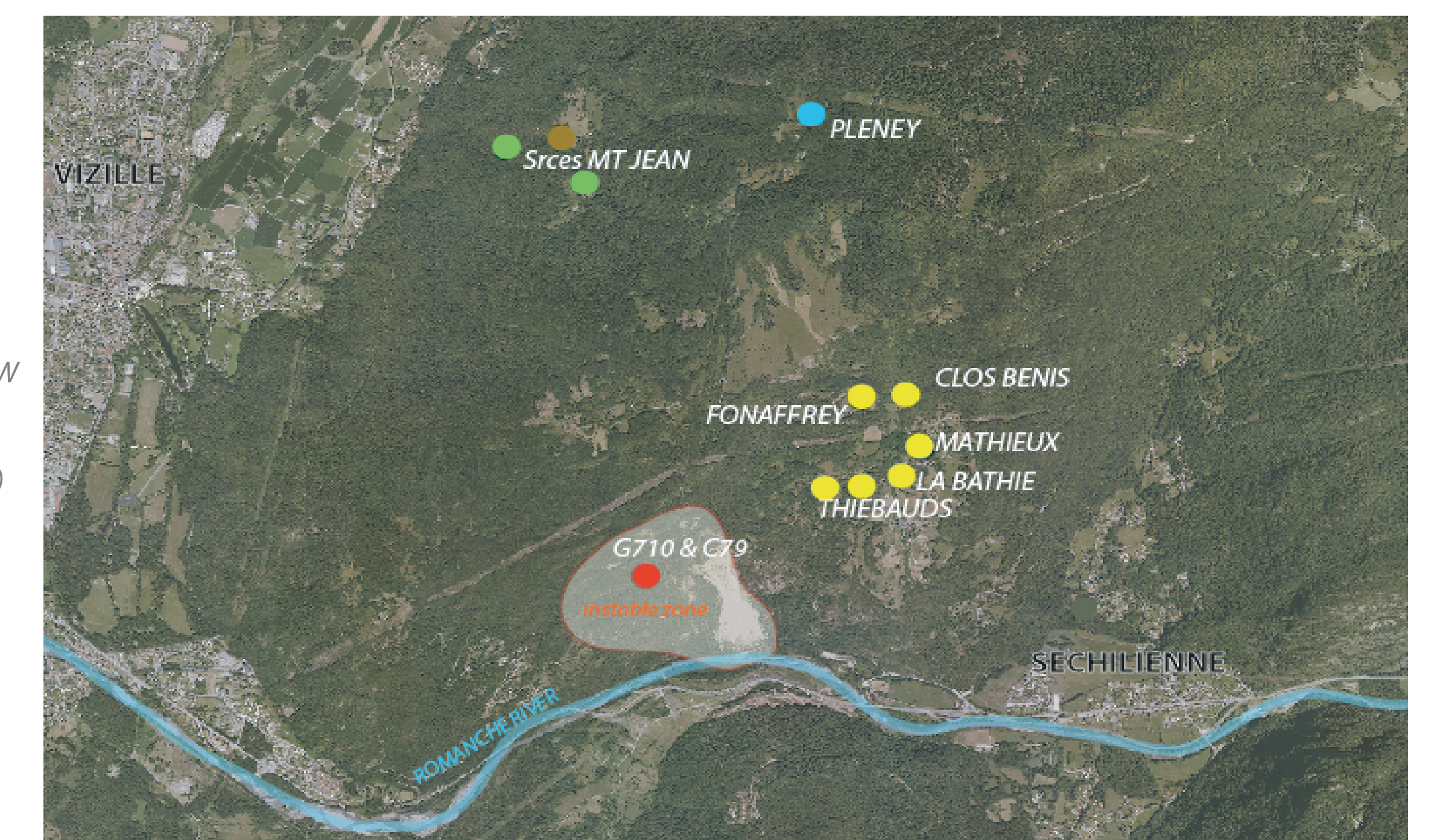


FIG 4 : SATELLITE VIEW OF THE STUDY SITE WITH SAMPLING POINTS (OUTFLOWS)

AIMS THE CHEMISTRY OF THE WATER ONLY, CANNOT PROVIDES INFORMATIONS ABOUT THE ORIGIN OF THE CHEMISTRY OF THE WATERS WITH INSURANCE AS THE GEOLOGICAL CONTEXT IS COMPLEX AND MIXING PROBLEMS CAN OCCURS. THIS IS WHY WE USE SR ISOTOPES IN THIS STUDY IN ORDER TO IDENTIFY THE ORIGIN AND FLOWPATHS OF THE WATER AS SR ISOTOPIC VARIATIONS PROVIDE NATURAL FINGERPRINTS OF ROCK-WATER INTERACTIONS AND HAVE BEEN LARGELY USED IN STUDIES OF WEATHERING AND HYDROGEOLOGY.

RESULTS & DISCUSSION

Ca/Sr ratio vs $^{87}\text{Sr}/^{86}\text{Sr}$ allows to identify if the sampled waters had a silicate a carbonate origin (fig 5).

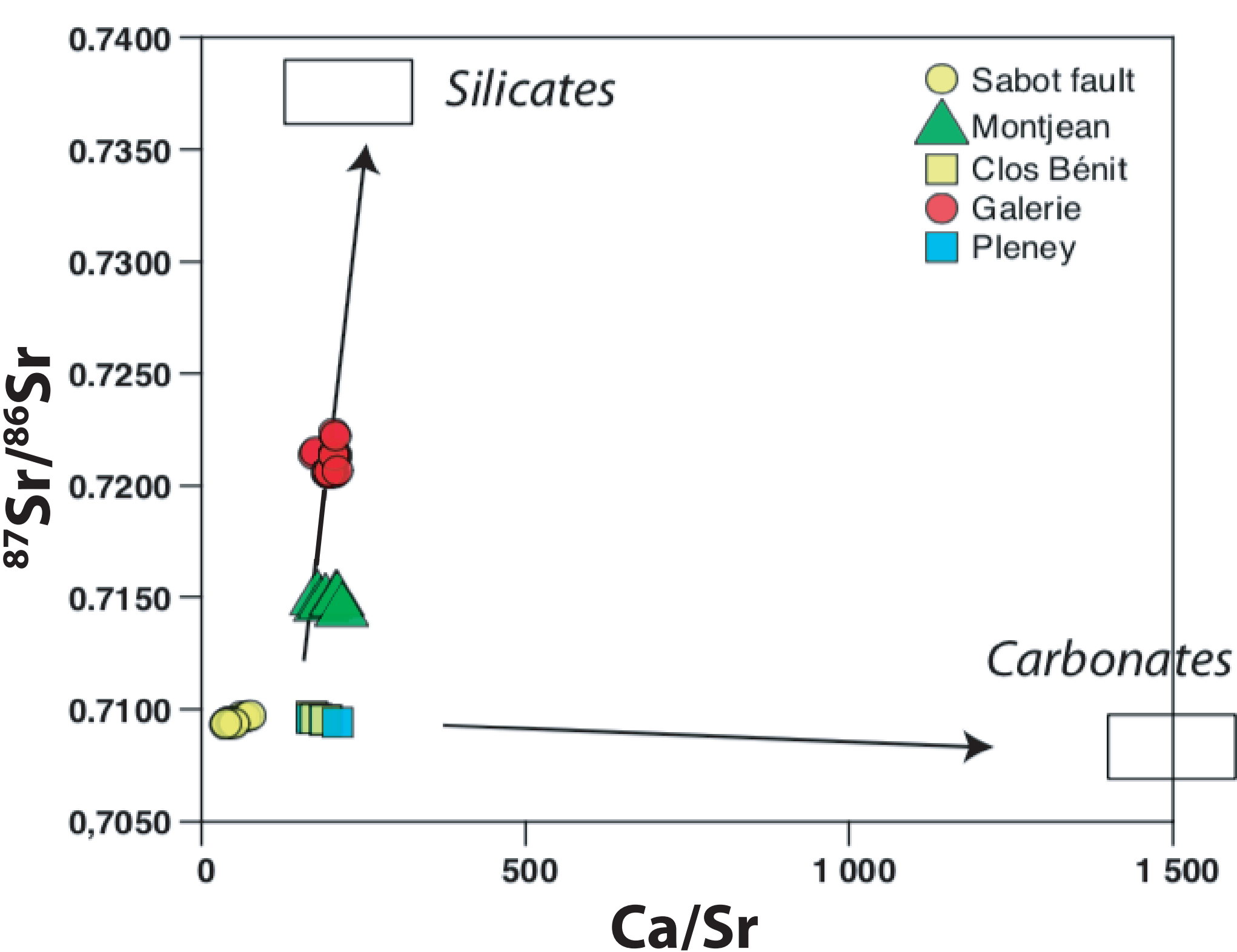


FIG 5: Ca/Sr VS $^{87}\text{Sr}/^{86}\text{Sr}$ - FOR THE DIFFERENT SAMPLED SOURCES : GALERIE = G710 + C79 ; SABOT FAULT = FONAFFREY + BATHIE + THIEBAUDS + MATHIEUX ; PLENEY ; CLOS BENIT (CLOSE TO SABOT FAULT SOURCES)

Thus we distinguish waters with low Ca/Sr and with Sr isotopic ratios which are increasing toward the silicates pole. This waters corresponds to the Mt Jean sources and the gallery sources which present the highest isotopic ratio. The other sources present a low Ca/Sr and isotopic ratio close to the ratio of carbonates. These points correspond to Pléney, Clos Benit, and the Sabot fault sources.

Pléney outflow is typical of a water which as a rapid flow through to carbonate cover (fig 5 & 6).

The use of SO_4/Na permit to highlight other trends in the distribution of the sources (fig 6). Two trends are visible : the first one corresponding to an enrichment in sulfates and in $^{87}\text{Sr}/^{86}\text{Sr}$ for the galerie and Mt Jean sources. The other trend is an enrichment in SO_4 without any variation in $^{87}\text{Sr}/^{86}\text{Sr}$ for the remaining sources.

For the enrichment in sulfates and in $^{87}\text{Sr}/^{86}\text{Sr}$ both: the increase of the $^{87}\text{Sr}/^{86}\text{Sr}$ ratio shows that silicate rocks are weathered whereas the increase in SO_4 is provided by the weathering of Pyrite present in the fracture. This is the alteration of Pyrite which increase the silicate rocks weathering as it release acids.

High values of $^{87}\text{Sr}/^{86}\text{Sr}$ ratios and SO_4 in the gallery contrary to Mt Jean sources are explained by the high fracturation of the rocks of the unstable zone where the gallery is. The intermediate values corresponding to Mt Jean are due to a more stable context, with less fracturation.

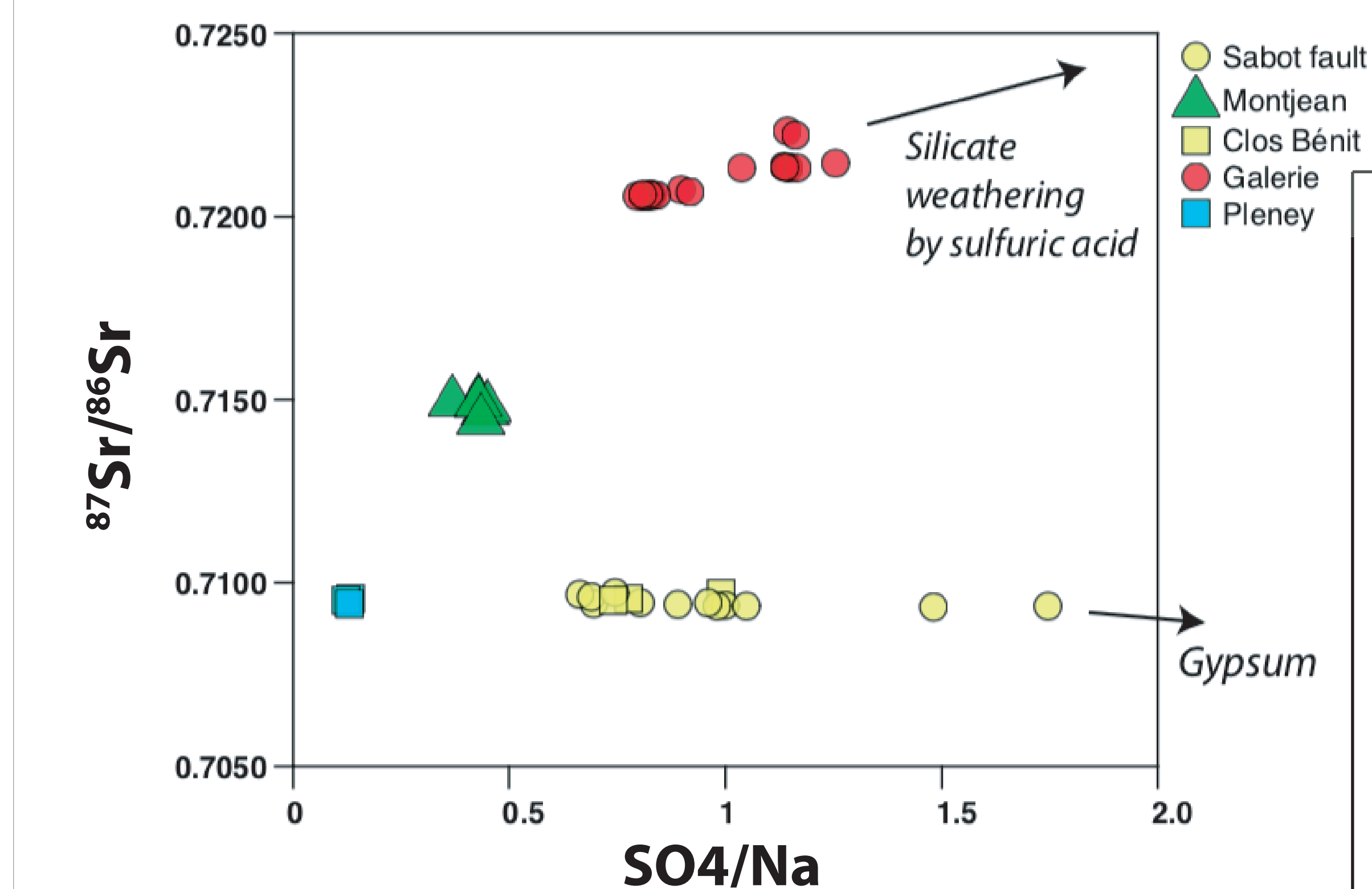


FIG 6 : SO_4/Na VS $^{87}\text{Sr}/^{86}\text{Sr}$ - FOR THE DIFFERENT SAMPLED SOURCES : GALERIE = G710 + C79 ; SABOT FAULT = FONAFFREY + BATHIE + THIEBAUDS + MATHIEUX ; PLENEY ; CLOS BENIT (WHICH IS CLOSE TO SABOT FAULT SOURCES)

Increase of SO_4 content observed in figure 6 for the Sabot et Clos Benit sources cannot be explained by the alteration of pyrite and silicate as explained before. Here the source of sulfates might explained by evidences of gypsum along the fractures draining the waters (gypsum occurrences on the geological map).

CONCLUSION

This study allowed us to refine the hydrochemical model proposed by Vallet et al, 2015. We were able to bring precisions about the chemistry of the water by identifying the main contribution for the waters composition. Indeed, we first identified 2 main influences known as carbonates & silicates. Then, another contribution has been evidenced : occurrences of SO_4 linked on one hand with alteration of Pyrite first and silicates, on the other hand the sulfates (SO_4) are due to Trias occurrences in the water that wasn't evidenced before.

Aberg et al, 1989: Weathering rates and $^{87}\text{Sr}/^{86}\text{Sr}$ ratios: an isotopic approach
Bain and Bacon, 1994: Strontium isotopes as indicators of mineral weathering in catchments
Blum et al, 1994: $^{87}\text{Sr}/^{86}\text{Sr}$ ratios of Sierra Nevada stream waters: implications for relative mineral weathering rates
Graustein and Armstrong, 1983: The use of Strontium-87/Strontium-86 ratios to measure atmospheric transport into forested watersheds
Hogan et Blum, 2003: Tracing hydrologic flowpaths in a small watershed using variations in $^{87}\text{Sr}/^{86}\text{Sr}$, Ca/Sr, Ba/Sr and $d^{18}\text{O}$
Land et al, 2000: Ba/Sr, Ca/Sr and $^{87}\text{Sr}/^{86}\text{Sr}$ ratios in soil water and groundwater: implications for relative contributions to stream water discharge
Négre and Petzet-Giraud, 2005: Strontium isotopes as tracers of groundwater-induced floods: the Somme case study (France)
Vallet et al 2015: Contribution of time-related environmental tracing combined with tracer tests for characterization of a groundwater conceptual model: a case study at the Séchilienne landslide, western Alps (France)