



**HAL**  
open science

## Analysis of human's natural locomotor behaviors at home from a sensitive floor

Mélodie Sannier, Stefan Janaqi, Gérard Dray, Benoit G. Bardy

► **To cite this version:**

Mélodie Sannier, Stefan Janaqi, Gérard Dray, Benoit G. Bardy. Analysis of human's natural locomotor behaviors at home from a sensitive floor. ESCoP 2022 - 22nd conference European Society for Cognitive Psychology, Aug 2022, Lille, France. , 2022. hal-03778599

**HAL Id: hal-03778599**

**<https://hal.science/hal-03778599>**

Submitted on 23 Sep 2022

**HAL** is a multi-disciplinary open access archive for the deposit and dissemination of scientific research documents, whether they are published or not. The documents may come from teaching and research institutions in France or abroad, or from public or private research centers.

L'archive ouverte pluridisciplinaire **HAL**, est destinée au dépôt et à la diffusion de documents scientifiques de niveau recherche, publiés ou non, émanant des établissements d'enseignement et de recherche français ou étrangers, des laboratoires publics ou privés.



# Analysis of natural locomotor behaviors at home using a sensitive floor.

Mélodie Sannier<sup>1,3</sup>, Stefan Janaqi<sup>2,3</sup>, Gérard Dray<sup>2,3</sup> & Benoît G. Bardy<sup>1,3</sup>



melodie.sannier@gmail.com

1 EuroMov Digital Health in Motion, Univ. Montpellier, IMT Mines Ales, Montpellier, France  
 2 EuroMov Digital Health in Motion, Univ. Montpellier, IMT Mines Ales, Ales, France  
 3 Human at home project (HUT), Montpellier, France

## WALKING AT HOME FACTS AND FIGURES\*

\*Averaged daily values per person  
(extracted from 40 months of occupancy)

≈ 822 m  
≈ 0.82 km  
DISTANCE

TIME  
≈ 1520 s  
≈ 25min 20s

≈ 0.58 m/s  
≈ 2.08 km/h  
VELOCITY

STEPS  
≈ 2050

≈ 170 traj.  
TRAJECTORIES

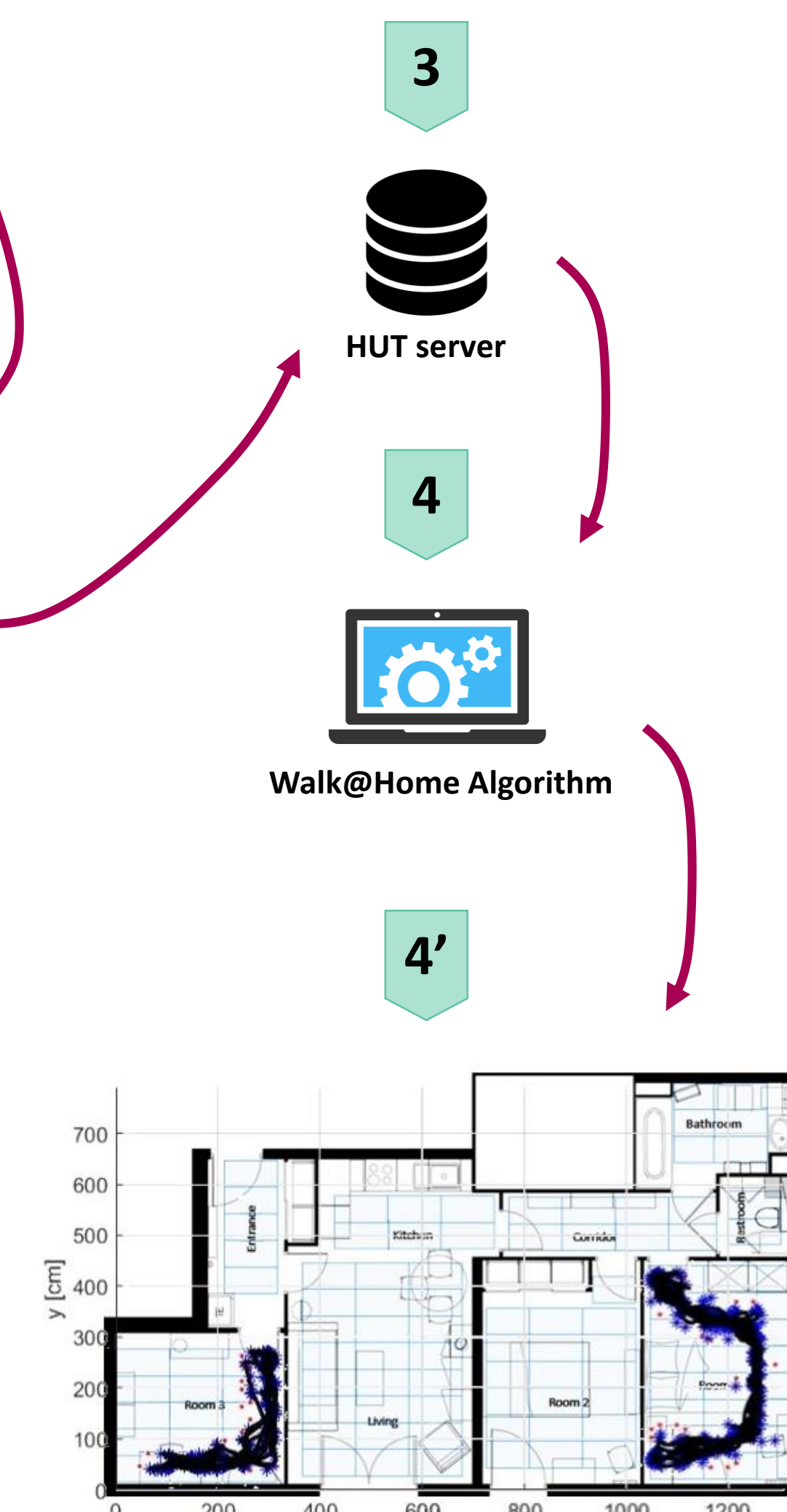
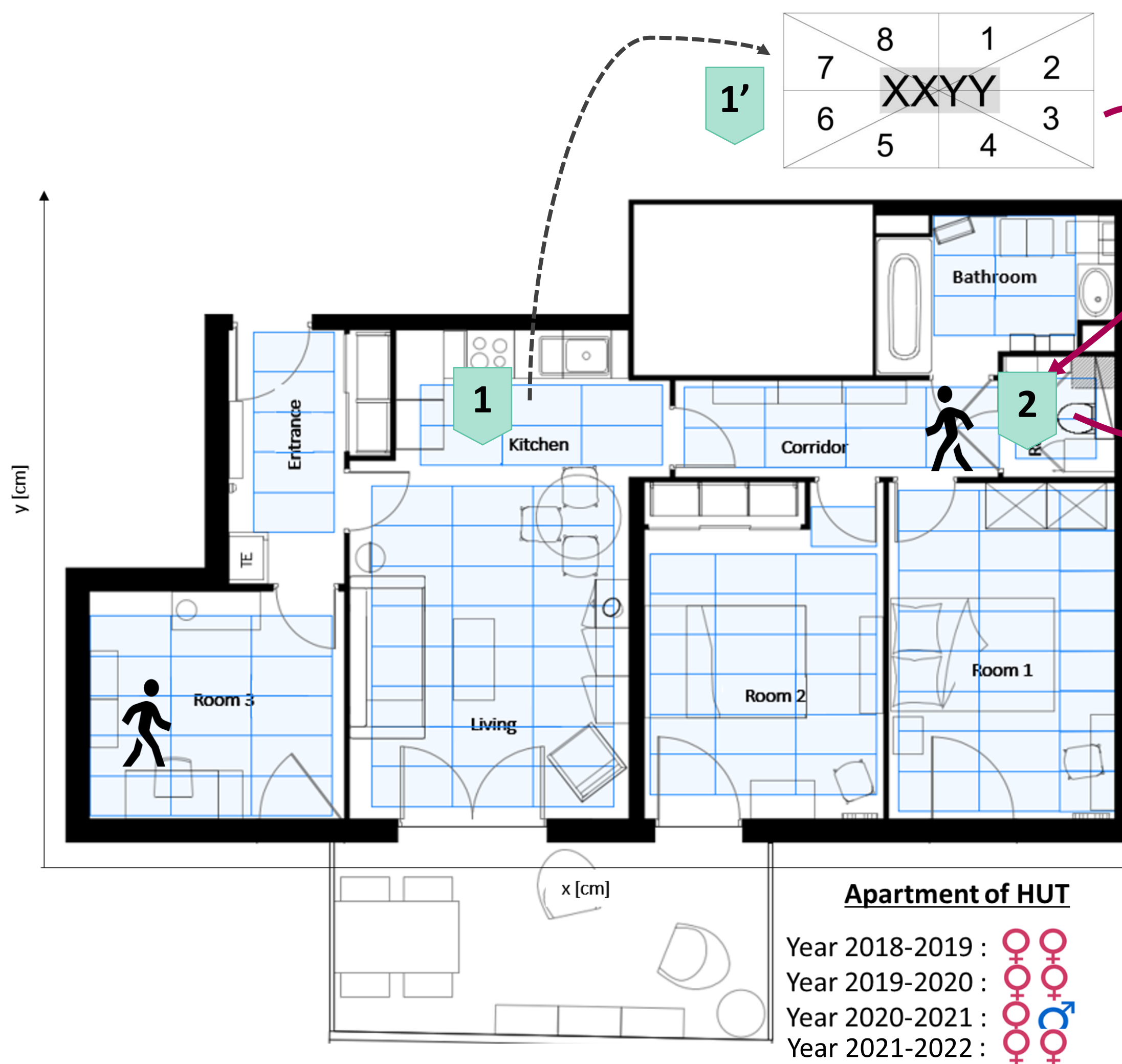
## INTRODUCTION

Documenting how people walk at home allows to identify :

- **Indoor locomotor efficiency** → Speed (v) in m/s, distance (d) in m, time (t) in s, number of steps, trajectories [1].
- **Indoor space occupancy** → Occupation of a restricted space **encumbered** with obstacles (attractors-repulsors) [2].
- **Markers of wellness** → Physical and psychological well-being (influences of **mood** and **personality** on walking pattern) [3,4].

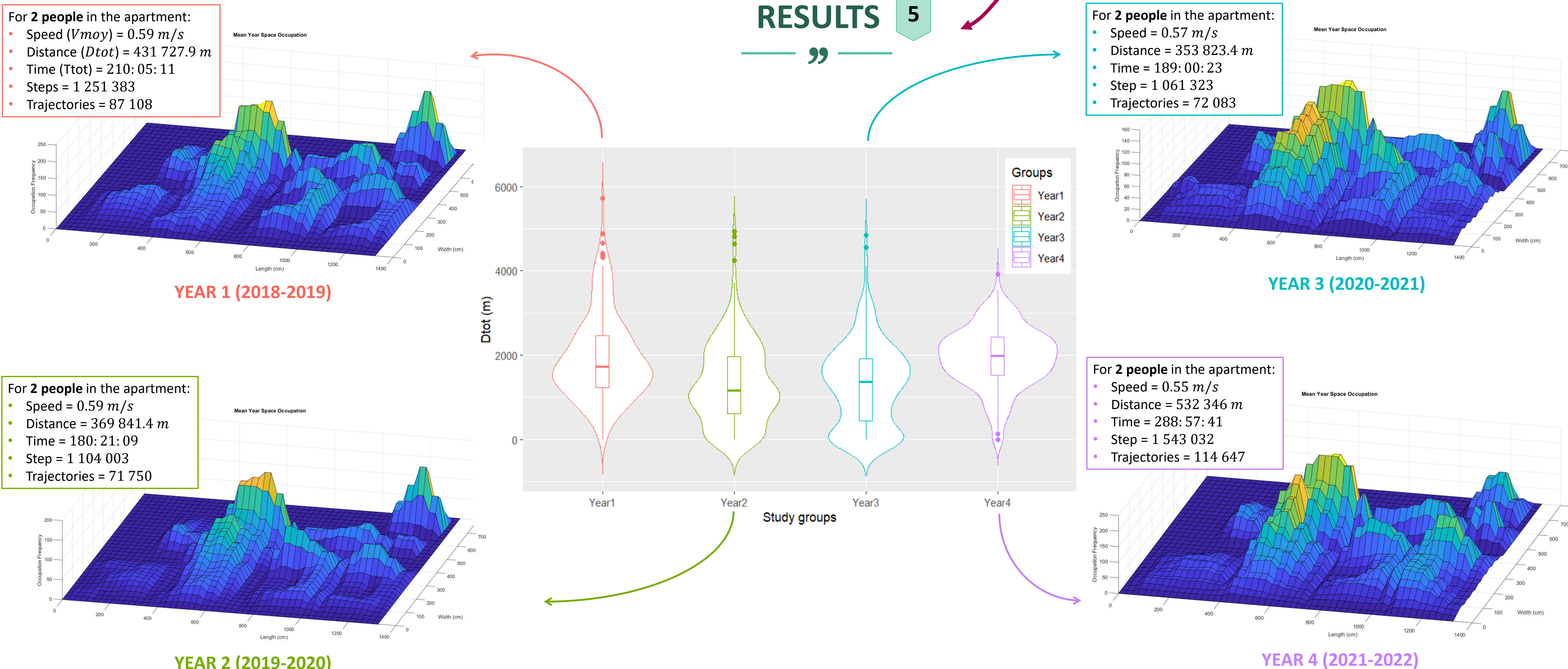
Our objective was to investigate the evolution of locomotor trajectories performed at home, captured by a capacitive proximity sensor, the SensFloor, installed in an apartment in Montpellier.

## MATERIALS & METHODS



- 1 : Installation of the SensFloor in the Human at home project apartment (72m<sup>2</sup>)
- 1' : SensFloor composed of 109 x 8 capacitive proximity sensors
- 2 : Continuous recording of locomotion from four successive dyads living naturally in their home for 1 year
- 3 : Storage of the data from the continuously captured ground
- 4 : Data cleaning with the Walk@Home algorithm
- 4' : Reconstruction of locomotor trajectories performed at home by the algorithm
- 5 : Data analysis and results visualization

## RESULTS



## CONCLUSION

This study shows that we walk every day at home approximately 25 minutes, taking 2050 steps over a distance of 822 meters with an average speed of 0.58 m.s<sup>-1</sup>. It also suggests a **variable locomotor behavior** (increase in distance and travel time) according to temporal moments (weekends, vacations, seasons) associated with a **constant walking velocity**. The extraction of this locomotor information over 4 years (1 year for each of the four dyads) allows us to document natural walking at home. This research also allows us to consider a **motor signature of well-being** at home that could serve as a health indicator for the recognition and prevention of psychomotor disorders.

### ACKNOWLEDGMENTS

This research has been conducted as part of the Human at home project (HUT) co-financed by the European Regional Development Fund (ERDF) and the Occitanie Region. This acknowledgment extends to the support given by Montpellier Méditerranée Métropole.

### RÉFÉRENCES

[1] A. H. Olivier, A. Marin, A. Crétual, and J. Pettré, "Minimal predicted distance: A common metric for collision avoidance during pairwise interactions between walkers," *Gait & posture*, vol. 36, no. 3, pp. 399-404, Jul. 2012.  
 [2] Fajen, B. R., & Warren, W. H. (2003). Behavioral dynamics of steering, obstacle avoidance, and route selection. *Journal of Experimental Psychology: Human Perception and Performance*, 29(2), 343.  
 [3] J. Michalak, N. F. Troje, J. Fischer, P. Vollmar, T. Heidenreich, and D. Schulte, "Embodiment of sadness and depression — gait patterns associated with dysphoric mood," *Psychosomatic medicine*, vol. 71, no. 5, pp. 580-587, 2009.  
 [4] N. F. Troje, "Decomposing biological motion: A framework for analysis and synthesis of human gait patterns," *Journal of vision*, vol. 2, no. 5, pp. 2-2, Sep. 2002.

