



**HAL**  
open science

## **Diagnosis and treatment of Merkel cell carcinoma: European consensus-based interdisciplinary guideline – Update 2022**

Marie-Léa Gauci, Cynthia Aristei, Jurgen C Becker, Astrid Blom, Véronique Bataille, Brigitte Dreno, Véronique del Marmol, Ana M Forsea, Maria Concetta Fagnoli, Jean-Jacques Grob, et al.

### ► To cite this version:

Marie-Léa Gauci, Cynthia Aristei, Jurgen C Becker, Astrid Blom, Véronique Bataille, et al.. Diagnosis and treatment of Merkel cell carcinoma: European consensus-based interdisciplinary guideline – Update 2022. *European Journal of Cancer*, 2022, 171, pp.203-231. 10.1016/j.ejca.2022.03.043 . hal-03775799

**HAL Id: hal-03775799**

**<https://hal.science/hal-03775799>**

Submitted on 6 Jun 2023

**HAL** is a multi-disciplinary open access archive for the deposit and dissemination of scientific research documents, whether they are published or not. The documents may come from teaching and research institutions in France or abroad, or from public or private research centers.

L'archive ouverte pluridisciplinaire **HAL**, est destinée au dépôt et à la diffusion de documents scientifiques de niveau recherche, publiés ou non, émanant des établissements d'enseignement et de recherche français ou étrangers, des laboratoires publics ou privés.



Distributed under a Creative Commons Attribution - NonCommercial - NoDerivatives 4.0 International License



## Review

# Diagnosis and treatment of Merkel cell carcinoma: European consensus-based interdisciplinary guideline – Update 2022



Marie-Léa Gauci <sup>a</sup>, Cynthia Aristei <sup>b</sup>, Jurgen C. Becker <sup>c</sup>, Astrid Blom <sup>d</sup>, Veronique Bataille <sup>e</sup>, Brigitte Dreno <sup>f</sup>, Veronique Del Marmol <sup>g</sup>, Ana M. Forsea <sup>h</sup>, Maria C. Fagnoli <sup>i</sup>, Jean-Jacques Grob <sup>j</sup>, Fabio Gomes <sup>k</sup>, Axel Hauschild <sup>l</sup>, Christoph Hoeller <sup>m</sup>, Catherine Harwood <sup>n</sup>, Nicole Kelleners-Smeets <sup>o</sup>, Roland Kaufmann <sup>p</sup>, Aimilios Lallas <sup>q</sup>, Josep Malvehy <sup>r</sup>, David Moreno-Ramirez <sup>s</sup>, Ketty Peris <sup>t,u</sup>, Giovanni Pellacani <sup>v</sup>, Philippe Saiag <sup>d</sup>, Alexander J. Stratigos <sup>w</sup>, Ricardo Vieira <sup>x</sup>, Iris Zalaudek <sup>y</sup>, Alexander C.J. van Akkooi <sup>z</sup>, Paul Lorigan <sup>aa</sup>, Claus Garbe <sup>ab</sup>, Céleste Lebbé <sup>a,\*</sup> On behalf of the European Dermatology Forum (EDF), the European Association of Dermato-Oncology (EADO) and the European Organization for Research and Treatment of Cancer (EORTC)

<sup>a</sup> Université de Paris, INSERM U976, AP-HP, Dermatology Department, Saint Louis Hospital, Paris, France

<sup>b</sup> Radiation Oncology Section, Department of Surgical and Biomedical Science, University of Perugia and Perugia General Hospital, Italy

<sup>c</sup> German Cancer Consortium (DKTK), Deutsches Krebsforschung Institut, Heidelberg, Germany

<sup>d</sup> Department of General and Oncologic Dermatology, Ambroise-Pare Hospital, APHP, & EA 4340 “Biomarkers in Cancerology and Hemato-oncology”, UVSQ, Université Paris-Saclay, Boulogne-Billancourt, France

<sup>e</sup> Mount Vernon Cancer Centre, East and North NHS Trust, Northwood, UK

<sup>f</sup> Dermatology Department, CHU Nantes, Université Nantes, CIC 1413, CRCINA Inserm U1232, Nantes, France

<sup>g</sup> Department of Dermatology, University Hospital Erasme, Université Libre de Bruxelles, Belgium

<sup>h</sup> Carol Davila University of Medicine and Pharmacy Bucharest, Department of Oncologic Dermatology, Elias University Hospital Bucharest, Romania

<sup>i</sup> Dermatology - Department of Biotechnological and Applied Clinical Sciences, University of L'Aquila, L'Aquila, Italy

<sup>j</sup> Aix Marseille University, APHM Hospital, Marseille, France

<sup>k</sup> Cancer Research UK Lung Cancer Centre of Excellence, The University of Manchester, Manchester, UK

<sup>l</sup> Department of Dermatology, University Hospital (UKSH), Kiel, Germany

<sup>m</sup> Department of Dermatology, Medical University of Vienna, Austria

<sup>n</sup> Centre for Cell Biology and Cutaneous Research, Blizard Institute, Barts and the London School of Medicine and Dentistry, Queen Mary University of London, UK

\* Corresponding author: Département d'oncodermatologie, AP-HP Hôpital Saint-Louis, Université de Paris, INSERM U976, 1, Avenue Claude Vellefaux, 75010 Paris.

E-mail address: [celeste.lebbe@aphp.fr](mailto:celeste.lebbe@aphp.fr) (C. Lebbé).

<sup>o</sup> Department of Dermatology, Maastricht University Medical Centre, GROW Research Institute for Oncology and Developmental Biology, Maastricht University, Maastricht, the Netherlands

<sup>p</sup> Department of Dermatology, Venereology and Allergology, Frankfurt University Hospital, Frankfurt, Germany

<sup>q</sup> First Department of Dermatology, Aristotle University, Thessaloniki, Greece

<sup>r</sup> Dermatology Department of Hospital Clinic of Barcelona, University of Barcelona, IDIBAPS, CIBER de Enfermedades Raras, Instituto Carlos III, Spain

<sup>s</sup> Department of Medical-&Surgical Dermatology Service, Hospital Universitario Virgen Macarena, Sevilla, Spain

<sup>t</sup> Institute of Dermatology, Università Cattolica, Rome, Italy

<sup>u</sup> Fondazione Policlinico Universitario A. Gemelli-IRCCS, Rome, Italy

<sup>v</sup> Dermatology Unit, University of Modena and Reggio Emilia, Modena, Italy

<sup>w</sup> 1st Department of Dermatology-Venereology, National and Kapodistrian University of Athens, Andreas Sygros Hospital, Athens, Greece

<sup>x</sup> Coimbra Hospital and University Centre, Coimbra, Portugal

<sup>y</sup> Department of Dermatology, University of Trieste, Italy

<sup>z</sup> Department of Surgical Oncology, Netherlands Cancer Institute Antoni van Leeuwenhoek, Amsterdam, Netherlands

<sup>aa</sup> Department of Medical Oncology University of Manchester and the Christie NHS Foundation Trust, Manchester, UK

<sup>ab</sup> Centre for Dermatocology, Department of Dermatology, Eberhard Karls University, Tuebingen, Germany

Received 17 March 2022; accepted 17 March 2022

Available online 19 June 2022

## KEYWORDS

Merkel cell;  
MCC;  
Guidelines;  
Consensus;  
EDF

**Abstract** Merkel cell carcinoma (MCC) is a rare skin cancer, accounting for less than 1% of all cutaneous malignancies. It is found predominantly in white populations and risk factors include advanced age, ultraviolet exposure, male sex, immunosuppression, such as AIDS/HIV infection, haematological malignancies or solid organ transplantation, and Merkel cell polyomavirus infection.

MCC is an aggressive tumour with 26% of cases presenting lymph node involvement at diagnosis and 8% with distant metastases. Five-year overall survival rates range between 48% and 63%. Two subsets of MCC have been characterised with distinct molecular pathogenetic pathways: ultraviolet-induced MCC versus virus-positive MCC, which carries a better prognosis. In both subtypes, there are alterations in the retinoblastoma protein and p53 gene structure and function. MCC typically manifests as a red nodule or plaque with fast growth, most commonly on sun exposed areas. Histopathology (small-cell neuroendocrine appearance) and immunohistochemistry (CK20 positivity and TTF-1 negativity) confirm the diagnosis. The current staging systems are the American Joint Committee on Cancer/Union for international Cancer control 8th edition. Baseline whole body imaging is encouraged to rule out regional and distant metastasis.

For localised MCC, first-line treatment is surgical excision with postoperative margin assessment followed by adjuvant radiation therapy (RT). Sentinel lymph node biopsy is recommended in all patients with MCC without clinically detectable lymph nodes or distant metastasis. Adjuvant RT alone, eventually combined with complete lymph nodes dissection is proposed in case of micrometastatic nodal involvement. In case of macroscopic nodal involvement, the standard of care is complete lymph nodes dissection potentially followed by post-operative RT. Immunotherapy with anti-PD-(L)1 antibodies should be offered as first-line systemic treatment in advanced MCC. Chemotherapy can be used when patients fail to respond or are intolerant for anti-PD-(L)1 immunotherapy or clinical trials.

© 2022 The Authors. Published by Elsevier Ltd. This is an open access article under the CC BY-NC-ND license (<http://creativecommons.org/licenses/by-nc-nd/4.0/>).

Merkel cell carcinoma (MCC) is a rare and aggressive skin cancer, accounting for less than 1% of all cutaneous malignancies which particularly touches old and/or immunosuppressed patients. Two subsets of MCC have been characterized with distinct molecular pathogenetic pathways based on mutational burden due to ultraviolet (UV) exposure and Merkel cell polyomavirus (MCPyV)

infection. Five-year overall survival (OS) rates range between 48% and 63%. A collaboration of multidisciplinary experts from the European Dermatology Forum (EDF), the European Association of Dermato-Oncology (EADO) and the European Organisation of Research and Treatment of Cancer (EORTC) was formed to update the information and recommendations

on MCC European guidelines based on scientific evidence and to provide an expert consensus.

The current staging systems are the American Joint Committee on Cancer (AJCC)/Union for international Cancer control (UICC) 8th edition. Whole body baseline imaging is encouraged to rule out regional and distant metastasis.

For localised MCC, first-line treatment is surgical excision with postoperative margin assessment followed by adjuvant radiation therapy (RT). Sentinel lymph node biopsy (SLNB) is recommended in all patients with MCC and without clinically detectable lymph nodes or distant metastasis. Adjuvant RT alone, eventually combined with complete lymph nodes dissection (CLNDs), is proposed in case of micrometastatic nodal involvement. In case of macroscopic nodal involvement, the standard of care is CLND, potentially followed by post-operative RT. Anti-PD-(L)1 antibodies should be offered as first-line systemic treatment in advanced MCC. Several clinical trials are ongoing with new therapies or new combinations of therapies for advanced MCC, and immunotherapy is also currently under evaluation in the adjuvant and neoadjuvant setting. Patients should be involved in shared decision-making regarding their management and should be provided with best supportive care in optimising symptoms' management and improving quality of life. The frequency of follow-up visits and investigations are based on disease stage, treatment given and individual patient needs.

## 1. Propose

### 1.1. Societies in charge

These guidelines were developed on behalf of the EDF. The EADO coordinated the authors' contributions under the leadership of Céleste Lebbé. Paul Lorigan was responsible for the collaboration with the EORTC to ensure the interdisciplinary quality of the guideline. Twenty-six experts from 13 countries, all of whom were delegates of national and/or international medical societies, collaborated in the development of these guidelines.

### 1.2. Financing of these guidelines

The authors did this work on a voluntary basis and did not receive any honorarium or reimbursements. Guideline task-force group members stated their conflicts of interest in the relevant section.

### 1.3. Disclaimer

The field of medicine is subject to a continuous evolutionary process. This entails that all statements, especially with regard to diagnostic and therapeutic

procedures, can only reflect scientific knowledge at the time of printing these guidelines. The attending physician invoking these guidelines recommendations must take into account scientific progress since the publication of the guidelines. In the selection and dosage of the drugs, attention was paid to compliance with the therapeutic recommendations given. Nevertheless, users are requested to use package inserts and technical information from the manufacturers as a backup, and in case of doubt, consult a specialist. The user remains responsible for all diagnostic and therapeutic applications, drugs and doses.

This work is protected by copyrights in all its parts. Any use outside the provision of the copyright act without the written permission by the guideline program in oncology GPO of the EADO is prohibited and punishable by law. No part of this work may be reproduced in any way without written permission by the GPO. This applies, in particular, to duplications, translations, microfilming and the storage, application and utilisation in electronic systems, intranets and internet.

### 1.4. Scope

These guidelines were written in order to assist clinicians in the diagnosis, treatment and follow-up of MCC. This update was initiated mainly due to advances in systemic treatments and a new AJCC staging system for patients with MCC, which justify a newer approach to definitions, risk classification and multidisciplinary therapeutic strategies. The use of these guidelines in clinical routine should improve patient care.

### 1.5. Target population

These guidelines give recommendations for the diagnosis, treatment and follow-up of patients with MCC. They are aimed at attending physicians and the medical nursing staff.

### 1.6. Objectives and formulation of questions

The guidelines are produced for all clinicians who care for patients with all stages of MCC. Particular emphasis is given to the definition, epidemiology, molecular pathogenesis, clinical and histopathological diagnosis, staging, management, and include a specific section on immunosuppressed patients, supportive care and follow-up. The formulation of clear sections has been made to support clinicians in their practice.

### 1.7. Audience and period of validity

This set of guidelines will assist healthcare providers in managing their patients according to the current standards of care and evidence-based medicine. It is not intended to replace the accepted national guidelines. The

Table 1  
Oxford centre for evidence-based medicine 2011: Levels of evidence [5].

Question	Step 1 (Level 1 <sup>a</sup> )	Step 2 (Level 2 <sup>a</sup> )	Step 3 (Level 3 <sup>a</sup> )	Step 4 (Level 4 <sup>a</sup> )	Step 5 (Level 5)
How common is the problem?	Local and current random sample surveys (or censuses)	Systematic review of surveys that allow matching to local circumstances <sup>b</sup>	Local non-random sample <sup>b</sup>	Case-series <sup>b</sup>	n/a
Is this diagnostic or monitoring test accurate? (Diagnosis)	Systematic review of cross-sectional studies with consistently applied reference standard and blinding	Individual cross-sectional studies with consistently applied reference standard and blinding	Non-consecutive studies or studies without consistently applied reference standards <sup>b</sup>	Case-control studies, or poor or non-independent reference standard <sup>b</sup>	Mechanism-based reasoning
What will happen if we do not add a therapy? (Prognosis)	Systematic review of inception cohort studies	Inception cohort studies	Cohort study or control arm of randomised trial <sup>a</sup>	Case-series or case-control studies, or poor quality prognostic cohort study <sup>b</sup>	n/a
Does this intervention help? (Treatment Benefits)	Systematic review of randomised trials or n-of-1 trials	Randomised trial or observational study with dramatic effect	Non-randomised controlled cohort/follow-up study <sup>b</sup>	Case-series, case-control studies or historically controlled studies <sup>b</sup>	Mechanism-based reasoning
What are the COMMON harms? (Treatment Harms)	Systematic review of randomised trials, systematic review of nested case-control studies, n-of-1 trial with the patient you are raising the question about or observational study with dramatic effect	Individual randomised trial or (exceptionally) observational study with dramatic effect	Non-randomised controlled cohort/follow-up study (post-marketing surveillance) provided there are sufficient numbers to rule out a common harm. (For long-term harms, the duration of follow-up must be sufficient.) <sup>b</sup>	Case-series, case-control or historically controlled studies <sup>b</sup>	Mechanism-based reasoning
What are the RARE harms? (Treatment Harms)	Systematic review of randomised trials or n-of-1 trial	Randomised trial or (exceptionally) observational study with dramatic effect			
Is this (early detection) test worthwhile? (Screening)	Systematic review of randomised trials	Randomised trial	Non-randomised controlled cohort/follow-up study <sup>b</sup>	Case-series, case-control or historically controlled studies <sup>b</sup>	Mechanism-based reasoning

<sup>a</sup> Level may be graded down on the basis of study quality, imprecision, indirectness (study PICO does not match questions PICO) because of inconsistency between studies, or because the absolute effect size is very small; Level may be graded up if there is a large or very large effect size.

<sup>b</sup> As always, a systematic review is generally better than an individual study.

guidelines published here reflect the best published data available at the time the report was prepared. Caution should be exercised in interpreting the data; the results of future studies may modify the conclusions or recommendations in this report. In addition, it may be necessary to deviate from these guidelines for individual patients or under special circumstances. Just as adherence to the guidelines may not constitute defence against a claim of negligence (malpractice), deviation from them should not necessarily be deemed negligent. These guidelines will require updating approximately every 2 years (expiration date: May 2023) but advances in medical sciences may demand an earlier update.

## 2. Methods

The European Interdisciplinary Guidelines on MCC are written as a uniform text.

The guidelines published here are an update of the existing European consensus-based (EDF/EADO/

EORTC) interdisciplinary guidelines for the management of MCC (former version 2015) [1] and based on other up-to-date guidelines, including the German S2k guidelines (2019) [2] and the National Comprehensive Cancer Network (NCCN) Clinical Practice Guidelines in Oncology for MCC (version 1.2021) [3]. *De novo* literature search was conducted by the authors with Medline search in English language publications with last search date on 23rd April 2021. Search terms included: ‘MCC’ combined with ‘epidemiology, incidence, mortality, survival’, ‘diagnosis, prognosis, staging, imaging, guidelines, treatment, surgical excision, SLNB, lymph node dissection, radiotherapy, neoadjuvant, adjuvant, systemic, anti-PD-(L)1 antibody, avelumab, pembrolizumab, nivolumab, chemotherapy, clinical trials, immunosuppression, solid organ transplant, haematological malignancy, human immunodeficiency virus, acquired immunodeficiency syndrome, follow-up. The references cited in selected papers were also searched for further relevant

publications. The methodology of these updated guidelines was based on the standards of the Appraisal of Guidelines for Research and Evaluation (AGREE II) instrument [4].

Recommendations are based on the level of best quality available evidence and good clinical practice.

The levels of evidence were graded according to the Oxford classification (Table 1) [5].

The grades of recommendation were classified as follows:

- A: Strong recommendation. Syntax: ‘shall’.
- B: Recommendation. Syntax: ‘should’.
- C: Weak recommendation. Syntax: ‘may/can’.
- X: Should not be recommended.
- 0: Recommendation pending. Currently not available or not sufficient evidence to make a recommendation in favour or against.

Expert consensus was provided wherever adequate evidence was not available.

### 2.1. Consensus building process

The consensus building process was conducted as follows:

In the first round, medical experts who participated in their national guideline development processes were involved in producing an initial draft. The EORTC selected experts from different specialties to contribute to these first drafts.

In a second round, a consensus meeting was held on 13th July 2021 with final outcomes: (1) the approval of the text and (2) a consensus rate of agreement of at least 80% for recommendations provided in structured boxes. Voting for the recommendations included the selection of ‘Agree’, ‘Disagree’ or ‘Abstain’ vote and the possibility of providing comments in case of disagree/abstain. Consensus voting on recommendations and finalisation of the draft was conducted among coauthors through emailing between August 15 th September 2021 and the 18th January 2022. There were 3 recommendations that had a lower than 80% consensus rate: the recommendation for 14, 15 and 16. Comments were received from coauthors, the recommendations were revised, and a second round of voting was conducted for these tree recommendations.

### 3. Definition (inclusion – exclusion)

MCC is a highly aggressive primary cutaneous carcinoma with epithelial and endocrine features. Its origin is still disputed: Merkel cell precursors (potentially derived from epidermal stem cells or hair follicle stem cells), pre-B cells, pro-B cells or dermal fibroblasts have been suggested [6].

### 4. Epidemiology – risk factors

MCC is a rare skin cancer, accounting for less than 1% of all cutaneous malignancies [7, 8]. The highest incidence of MCC has been reported in Australia (annual age-standardised incidence rate ranging from 0.82 to 2.5 per 100 000 population) [9–11], followed by New Zealand (0.88–0.96) [12, 13] and the United States (0.66–0.79) [14–16]. Among European countries, incidence rates are fairly similar across the continent: 0.25/100 000 person-years in France [17], 0.31 in Spain [18], 0.3 in Scotland [19] and 0.35 in the Netherlands [20]. However, the incidence rate appears slightly lower in Scandinavian countries: 0.19 in Sweden [21] and 0.12 in Finland [22].

More importantly, the incidence appears to be rising significantly over time in most areas, by as much as a factor 3 to 5 from 1985 to 2013 and could be due to the aging population [23–25], particularly in individuals over 70 years old and non-Hispanic whites [15,26]. This could be due to a true increased incidence related to an increase in risk factors, as well as to upgraded diagnostic immunohistochemical tools and improved registration.

Known risk factors for MCC are the following:

- **Old age:** The median age at diagnosis is reported to be 77 years [14, 27] and the incidence rates increase sharply with age [13,26] with the highest incidence reported in over 85-year-old individuals [14].
- **UV exposure:** The incidence of MCC is strongly associated with lower latitudes and high UV radiation indexes [28, 29] and the tumour occurs preferentially on sun-exposed skin. Moreover, there is a 100-fold increased risk of developing MCC in patients treated with psoralen + UVA [30].
- **White skin type:** MCC is very rare in dark-skinned patients, whether they be Black, Hispanic or Asian [13,15,31]. Incidence is about 8 times higher in white than in non-Hispanic Blacks [26].
- **Male sex:** The incidence is over 2.5 times higher in men than women in virtually all reported studies.
- **Immunosuppression:** Approximately 6–12% of all patients with MCC are immunosuppressed [32]. There is a significant excess risk of MCC from 3 to 90 fold in patients with haematological malignancies [33], in particular chronic lymphocytic leukemia (CLL, [34,35], patients with HIV/AIDS [36,37]) and in solid organ transplant recipients (SOTRs) [38,39]. There is some evidence that there is a stronger association with MCPyV in non-immunosuppressed patients [40]. Epidemiology and outcome of immunosuppression-related MCC are discussed in a dedicated section below.
- **MCPyV infection:** The MCPyV is a ubiquitous virus. It is clonally integrated and is the etiological agent responsible for up to 80% of MCC in Europe [41]. Virus-positive MCC may carry a better prognosis than UV-induced MCC [42,43]. More details on MCC molecular pathogenesis and MCPyV infection are described in the section below.

MCC is an aggressive tumour [20,23]. Five-year relative survival rates range between 48% and 63%.



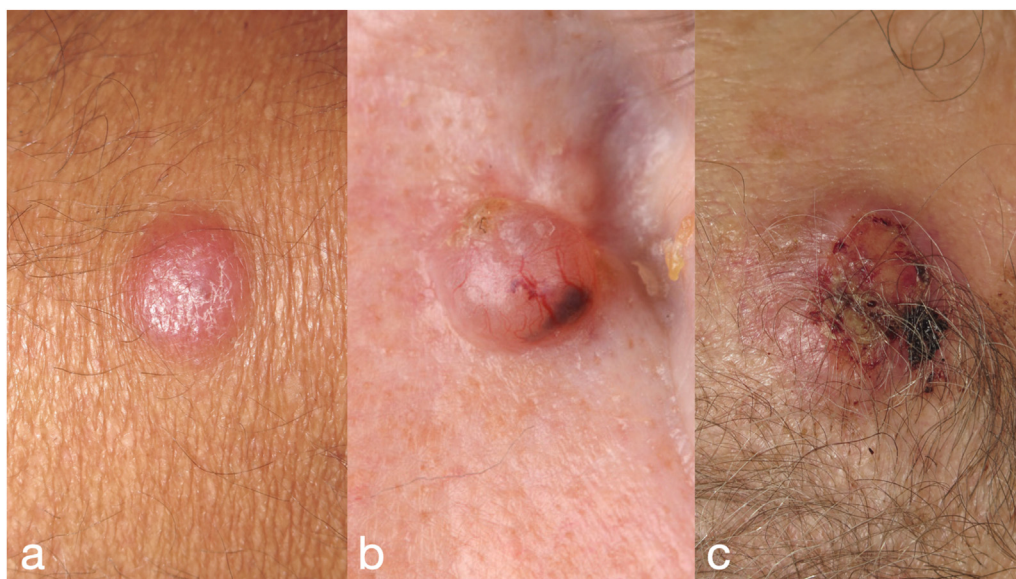


Fig. 1. Clinical manifestations of MCC: (a) a slightly elevated red plaque on the thigh of a 68 year-old man. (b) A well-demarcated nodule on the nose of a 70 year-old woman mimicking a basal cell carcinoma, with clinically visible linear branching vessels and an area of pigmentation. (c) A poorly demarcated amelanotic nodule with central ulceration on the temporal area of a 75 year-old man. (For interpretation of the references to colour in this figure legend, the reader is referred to the Web version of this article). MCC, Merkel cell carcinoma.

Better prognosis has been reported for women and in younger ages [9,23,44].

## 5. Molecular pathogenesis

The main risk factors for developing MCC – chronic UV-exposure and immunosuppression – point to its molecular pathogenesis. Indeed, one subset of MCCs (virus negative) – prevailing in white patients living in areas with high UV exposure – is characterised by a high tumour mutational burden with a strong UV-signature. Retinoblastoma protein (RB) and p53 are among the most significantly mutated genes. However, the other major MCC subgroup – more common in the Northern hemisphere – has a very low tumour mutational burden and instead harbours clonal integration of the MCPyV (virus positive) [40]. Notably, MCPyV-encoded early transforming genes also interfere with RB and p53. Indeed, viral integration leads to the expression of a truncated MCPyV large T (LT) antigen that contains the LXCXE motif, capable of binding to RB protein and inactivating its tumour suppression function [45]. LT plays a major role in tumour maintenance and cell growth. Virus-positive MCC tumours also express MCPyV small T antigen (sT) which, upon binding Fbxw7 (F-Box And WD Repeat Domain Containing 7, a critical tumour suppressor and one of the most commonly deregulated ubiquitin-proteasome system proteins in human cancer), leads to the accumulation of oncogenic proteins such as cyclin-E, c-Jun, mTOR and truncated LT-Ag [46]. sT is considered the main transforming driver gene with a major role in metastasis [6,47,48].

Because of the presence of either multiple neoepitopes or viral proteins, both UV-associated and viral carcinogenesis result in highly immunogenic tumours, which only become clinically evident when they either acquire immune escape mechanisms or cannot be controlled in immunocompromised patients. While there are several phenotypic similarities between both forms of MCC, there are increasing reports indicating histopathologic differences [49]. The cell of origin of MCC remains unknown; suggested candidates include pro/pre-B cells and epidermal stem cells. However, there are increasing lines of evidence pointing towards interfollicular and hair bulge basal keratinocytes for UV- and viral-associated MCC, respectively [6].

## 6. Diagnostic approach

### 6.1. Clinical diagnosis

#### 6.1.1. Clinical presentation and dermatoscopic features

MCC typically manifests as a firm, asymptomatic, non-tender flesh-coloured or red nodule or plaque (Fig. 1). The lesion often rapidly increases in size over a period of weeks or months. Ulceration and bleeding are infrequent at first presentation but they might occur at an advanced stage [1,31,50]. The most frequent anatomic sites of MCC are the sun-exposed areas of head and neck (29–43.9%) and the extremities (36.9–45%), whereas less than 5–10% of MCCs develop on partially sun-protected areas (abdomen, thighs and hair-bearing scalp) or highly sun-protected areas (buttocks). Extracutaneous sites such as vulva, vagina, oral mucosa

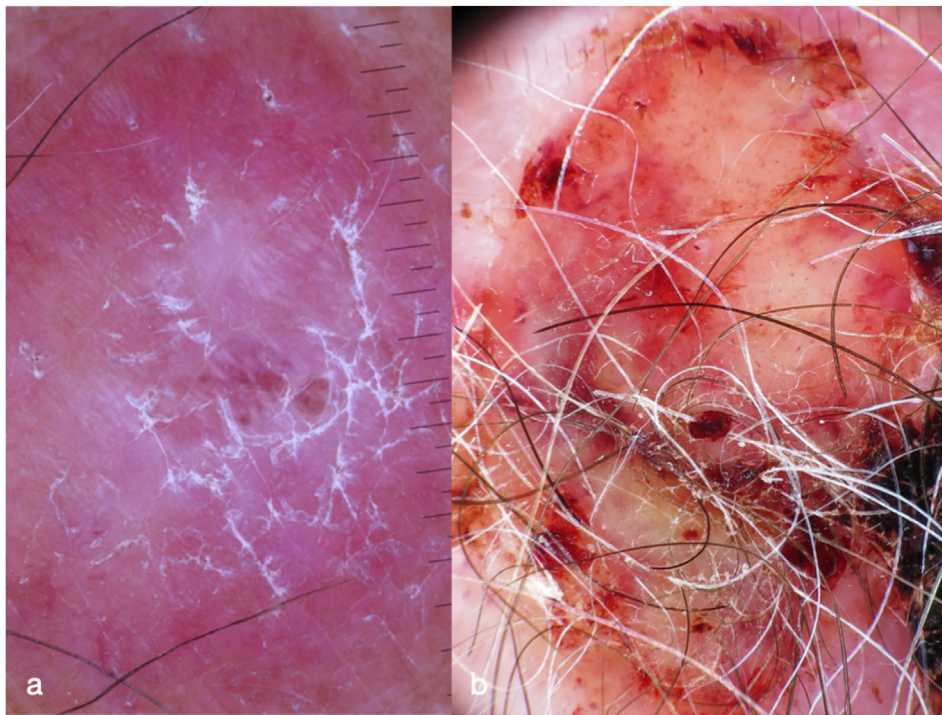


Fig. 2. Dermatoscopic images of MCC: (a) pink structureless colour combined with white structureless areas and white shiny lines. (b) Red and white structureless areas, multiple ulcerations, dotted and short linear vessels. (For interpretation of the references to colour in this figure legend, the reader is referred to the Web version of this article). MCC, Merkel cell carcinoma.

[51], parotid gland, submandibular gland or nasal cavity are very rarely involved (around 0.5%) [31,50,52,53]. In some cases, the primary tumour (pT) site is unknown and the disease presents metastatic disease to lymph nodes or distant organs (0.8–14%) [31]. A few cases of intraepidermal MCC manifesting a slightly scaly erythematous patch or violaceous nodule have also been described in the literature [54,55]. The pT can vary in size. One series reported that 21.2% measured less than 1 cm in the largest diameter, 43.3% between 1 and 2 cm and 35.3% more than 2 cm [50].

MCC is frequently misdiagnosed initially, contributing to diagnostic delay; MCC may be confused with an inflammatory lesion such as acne or other folliculitis or with a benign tumour such as epidermal cyst, lipoma, dermatofibroma, fibroma and angioma. In many other cases, MCC is misinterpreted as another malignant tumour, mainly basal or squamous cell carcinoma and less frequently lymphoma, metastatic carcinoma, nodular or amelanotic melanoma or sarcoma, with low impact on prognosis since these tumours are usually rapidly biopsied or removed and the correct diagnosis is established. A clinically useful recommendation is that any nodule with non-specific morphology, lack of tenderness and fast growing should be biopsied rather than monitored.

The dermatoscopy of MCC reveals a predominant red colour corresponding either to numerous vessels or generalised erythema (Fig. 2). Milky-red or pink structureless colour is an additional dermatoscopic

characteristic of MCC [56,57]. It might be seen either as a pink background or as smaller roundish areas (milky red areas or globules or clods). Several morphologic types of vessels may be present, including dotted, glomerular, arborising and linear irregular vessels [56,57]. Usually, more than one morphologic type of vessel co-exist, resulting in the so-called polymorphous vascular pattern, although lesions with monomorphous vessels have also been described. White areas are also frequently described (Fig. 2) [58].

Overall, the dermatoscopic pattern of MCC cannot be considered as specific since it overlaps with other non-pigmented cutaneous tumours such as poorly differentiated squamous cell carcinoma and amelanotic melanoma. However, the detection of polymorphous vessels and/or milky red colour raises the suspicion of malignancy since both are exceedingly rare in benign tumours. This justifies the diagnostic value of dermatoscopy from a clinical perspective.

## 6.2. Histological diagnosis: characteristics and differential diagnosis, pathology report

### 6.2.1. Characteristics and differential diagnosis

Though histopathologic assessment is essential to diagnose and further differentiate this clinically non-specific tumour. Depending on size and location, tissue sampling in suspicious lesions should be accomplished by punch, incisional or excisional biopsy [59,60]. MCC generally consists of a solid nodular lesion in the dermis



Table 2  
Immunohistochemistry profile of MCC (adapted from Becker *et al.* [2]).

	MCC	Lymphoma	Melanoma	SCLC <sup>a</sup>
CK 20	+	–	–	–
Neuron-specific-enolase	+ <sup>#</sup>	–	–	+/-
Chromogranin A (CgA)	+/-	–	–	+/-
Huntingtin interacting protein 1 (HIP1)	+	+/-	–	–
Vimentin	–	+	+	–
Melan-A/MART-1	–	–	+	–
Leukocyte common Antigen (LCA)	–	+	–	–
Thyroid transcription factor-1 (TTF-1)	–	–	–	+

<sup>a</sup> SCLC small cell lung cancer.

and subcutis. On haematoxylin eosin stains, the tumour typically exhibits sheets and nests of uniform small round blue undifferentiated cells with scant cytoplasm, a ‘salt and pepper’ chromatin pattern, large lobulated nucleoli, high mitotic rate and occasional necrotic cells. A small cell variant displays overlapping features with cutaneous lymphoma. Important differential diagnoses include melanoma, Ewing sarcoma, neuroblastoma, leukaemia cutis or poorly differentiated carcinoma metastatic to the skin (e.g. small cell lung cancer). Superficial or in-situ types may be mistaken for other intraepithelial malignancies.

Given the broad differential diagnosis, immunohistochemistry is mandatory to confirm the diagnosis and to distinguish MCC from potential histopathologic imitators (Table 2). MCC is characterised by the expression of both epithelial markers such as cytokeratin 20 with a characteristic paranuclear dot-like staining AE1/AE3 and CAM5.2, and neuro-endocrine markers such as neuron-specific enolase (very sensitive but expressed by other neuroendocrine tumours), synaptophysin, CD56 and chromogranin A (more specific for MCC). The latter is the most commonly-used marker with a diffuse cytoplasmic staining pattern. By contrast, the following markers are generally negative: thyroid transcription factor1 (TTF-1) important for differential diagnosis with small-cell lung cancer particularly when the primary is unknown, S-100 and HMB-45 expressed by melanoma, leukocyte common antigen and other lymphocyte markers expressed by lymphomas, CK7 and carcinoembryonic antigen expressed by sweat gland carcinomas (see Table 2). However, an aberrant profile with positive CK7 and TTF-1 expression can occur in CK20- and MCPyV-negative cases [61]; in these cases, a lower expression of neurofilament and AT-rich sequence-binding protein SATB2 can also be observed [62].

### 6.2.2. Pathology report

In clinical practice, a typical histology complemented with positive CK-20 and negative TTF-1

immunostaining is usually considered sufficient for the diagnosis of MCC. Depending on the individual histomorphological features and in special variants (e.g. CK-20 negative tumours), further immunohistochemical analysis should be performed to confirm diagnosis and differentiate MCC from potential mimics. Apart from tumour-thickness, infiltrative growth pattern and lymphovascular invasion can also be documented as potential features of more aggressive tumour behaviour.

## 7. Tumour staging – prognosis and risk classification – staging work up

### 7.1. Prognostic classification (Table S1)

#### 7.1.1. AJCC/UICC 8 staging [63]

AJCC/UICC 8 classification are recommended for staging. It is based on an updated analysis of 9387 cases of MCC from the National Cancer Data Base. In these classifications, there are no differences between the pathological pT assessment and clinical pT assessment (Table 3).

For the N categories, the clinical stage where lymph node involvement is identified by clinical or radiological evaluation, and the pathological stage where lymph node involvement is histologically proven either by SLNB or lymphadenectomy or fine biopsy are distinguished (see Table 3).

There are 3 categories of distant metastatic disease (M status) as in melanoma staging: M1a-distant skin, distant subcutaneous tissues or distant lymph nodes; M1b-lung; and M1c-all other visceral sites. The clinical/radiological and pathological assessment of metastasis are also distinguished (Table 3).

The stage groups with corresponding prognostic values are summarised in Table 4.

#### 7.1.2. Clinical features (demography, pT)

MCC has a high rate of local recurrence, regional recurrence and distant metastasis. Clinical factors related to an adverse outcome are older age, male sex, location in head and neck or trunk compared to upper limbs, size of the pT and the presence of immunosuppression, which is described in a dedicated section below [64–67]. The maximum tumour diameter, which is included in AJCC8 staging, is also an important clinical predictor. In the 2021 NCCN guidelines 2021, unfavourable prognostic factors include tumour size >2 cm, chronic immunosuppression and head/neck primary site (Table 5) [3].

Tumour size is strongly correlated with lymph node metastasis which is, in turn, a very strong prognostic indicator. The risk of regional nodal involvement (micro or macroscopic) increased from 14% for 0.5-cm diameter tumours to 25% for 1.7-cm (median-sized) tumours and to more than 36% for tumours 6 cm or larger [68].

Table 3

TNM classification and staging (8th edition) for Merkel cell carcinoma of the skin (*Union for International Cancer Control (UICC). TNM Classification of malignant tumours, Eighth edition. Merkel cell carcinoma.* Oxford: WILEY Blackwell; 2017.)/AJCC 8th edition 2017 (AJCC Cancer Staging Manual, Eighth Edition. In: Amin MB et al., 2017).

Clinical stage groups (cTNM) <sup>a</sup>			Pathological stage groups (pTNM) <sup>b</sup>				
	T	N	M		T	N	M
0	Tis	N0	M0	0	Tis	N0	M0
I	T1	N0	M0	I	T1	N0	M0
IIA	T2, T3	N0	M0	IIA	T2, T3	N0	M0
IIB	T4	N0	M0	IIB	T4	N0	M0
III	Any T	N1-3	M0	IIIA	T0	N1b	M0
					T1-T4	N1a, N1a (sn)	M0
				IIIB	T1-T4	N1b, N2, N3	M0
IV	Any T	Any N	M1	IV	Any T	Any N	M1
c/pT – Primary tumour							
TX	Primary tumour cannot be assessed						
T0	No evidence of primary tumour						
Tis	Carcinoma in situ						
T1	2 cm or less in greatest dimension						
T2	More than 2 cm but not more than 5 cm in greatest dimension						
T3	More than 5 cm in greatest dimension						
T4	Tumour invades deep extra dermal structures, i.e. cartilage, skeletal muscle, fascia or bone						
cN- Regional lymph nodes							
NX	Regional lymph nodes cannot clinically be assessed						
N0	No clinically or radiologically detected regional lymph node metastasis						
N1	Clinically or radiologically detected regional lymph node metastasis						
N2	In-transit metastasis <sup>c</sup> without lymph node metastasis						
N3	In-transit metastasis <sup>c</sup> with lymph node metastasis						
pN – Regional lymph nodes							
NX	Regional lymph nodes cannot be assessed						
N0	No regional lymph node metastasis						
N1	Regional lymph node metastasis						
N1a (sn)	Clinically occult (microscopic) metastasis detected on sentinel node biopsy						
N1a	Clinically occult (microscopic) metastasis detected on node dissection						
N1b	Clinically and/or radiologically detected (macroscopic) regional lymph node metastasis, microscopically confirmed						
N2	In-transit metastasis <sup>c</sup> without lymph node metastasis						
N3	In-transit metastasis <sup>c</sup> with lymph node metastasis						
cM – Distant metastasis							
M0	No distant metastasis						
M1	Distant metastasis						
M1a	Skin, subcutaneous tissues or non-regional lymph node(s)						
M1b	Lung						
M1c	Other site(s)						
pM- Distant metastasis							
M0	No distant metastasis						
M1	Distant metastasis microscopically confirmed						
M1a	Skin, subcutaneous tissues or non-regional lymph node(s), microscopically confirmed						
M1b	Lung, microscopically confirmed						
M1c	Other site(s), microscopically confirmed						

c: clinical, p: pathological.

<sup>a</sup> Clinical staging is defined by microstaging the primary Merkel cell carcinoma (MCC) with clinical and/or radiological evaluation for metastasis.

<sup>b</sup> Pathological staging is defined by microstaging the primary MCC and pathological nodal evaluation of the regional lymph node basin with sentinel lymph node biopsy or complete lymphadenectomy or pathologic confirmation of distant metastasis.

<sup>c</sup> In transit metastasis: a discontinuous tumour distinct from the primary lesion and located between the primary lesion and the draining regional lymph nodes or distal to the primary lesion.

### 7.1.3. Histological prognostic markers of the pTs

Although several prognostic markers have been studied in MCC, to date there is no convincing demonstration of any histological or immunohistochemical prognostic marker. However, several prognostic markers have been studied and some deserve further evaluation:

Increasing pT thickness was significantly associated with poorer disease-free survival (69% 5-year disease-free survival in tumours ≤10 mm thick compared to 18% for patients with tumours >10 mm thick,  $p = 0.002$ ) and disease-specific survival (97% 5-year survival in tumours ≤10 mm thick compared to 74%

Table 4

AJCC 8th edition, 2017 clinical and pathological staging for Merkel cell carcinoma [63] with the prognosis of stage groups (adapted from Harms *et al.*, 2016 [27]).

Stage	TNM	5-year OS (%)
0	Tis N0 M0	
cI	T1 N0 M0	45
pI	T1 N0 M0	62.8
cIIA	T2/T3 N0 M0	30.9
pIIA	T2/T3 N0 M0	54.6
cIIB	T4 N0 M0	27.3
pIIB	T4 N0 M0	34.8
cIII	AnyT N1-3 M0	26.8
pIII		39.7
IIIA	AnyT N1a (sn) or N1a M0	40.3
	T0 N1b M0	26.8
IIIB	T1-4 N1b-3 M0	
cIV	AnyT AnyN M1	
pIV	AnyT AnyN M1	13.5

c: clinical, p: pathological, T0: no primary tumour, Tis: in situ, OS: overall survival.

Other abbreviations are detailed in the text.

for patients with tumours  $\geq 10$  mm thick,  $p = 0.006$ ) [69,70]. However, it is well known from clinical practice that even a superficial MCC can metastasize, and in the AJCC classification, tumour depth is not regarded as a high-risk feature [27].

- Lymphovascular invasion is also a prognostic factor for poor outcome [71]. Although it is not included in the AJCC staging system, it is included in the 2021 NCCN guidelines as a baseline risk factor [3].
- Tumour infiltrating immune cells have been suggested as having a positive prognostic value although their presence deserves further evaluation [70,72,73].
- Deep tumour invasion of fascia, muscle, cartilage or bone defines T4 in AJCC8 [63].
- The prognostic value of MCPyV status has been debated in the past years. Several small studies have shown that MCPyV-negative tumours have a worse prognosis and two recent studies showed that MCPyV-positive tumours are associated with a more favourable prognosis. A Swedish study found an increased risk of death for men with a virus-negative MCC (HR 3.6 [64]). A second study showed that MCPyV-positive tumours display longer disease-specific and recurrence-free survival in both univariate and

Table 5

Clinical and histological features associated with high-risk MCC versus low-risk MCC.

Risk of recurrence	Clinical features
High-risk MCC: any of the criteria is sufficient to classify as high-risk tumour	<ul style="list-style-type: none"> <li>- Tumour size <math>\geq 2</math> cm,</li> <li>- Chronic immunosuppression</li> <li>- Head/neck primary site</li> <li>- Pathologically positive lymph nodes or no correct assessment of the lymph node status</li> <li>- Lymphovascular invasion</li> </ul>

multivariate analysis [74]. Therefore, the diagnostic value of MCPyV detection using either molecular or immunohistochemical techniques is currently under investigation. However, there is as yet no routine method available to accurately distinguish between both types. In particular, immune-staining for MCPyV large T antigen cannot reliably discriminate virus-positive from the more aggressive virus-negative MCC [40,53,59].

The favourable prognostic values of lower mast cell counts, reduced vascular density, absence of p53 and p63 and phosphorylated CRE-binding protein P-CREB deserve also further evaluation [70,72,73,75].

#### 7.1.4. Regional and distant involvement

The main prognostic factors are related to regional and distant involvement. The localised MCC tumours carry the best prognosis (50.6% 5-year OS rate) [27]. In regional and distant disease, 5-year OS was estimated to be 35.4% and 13.5%, respectively, from a National Cancer Database study of 2856 cases [27]. Nodal MCC with unknown pT have a higher 5-year OS of 42.2% [27]. Remarkably, a recent study showed substantially higher OS rates than predicted in the AJCC8 study: 5-year OS of 72.6% for local disease and 62.7% for nodal disease [76].

Lymph node status is the most important independent prognostic predictor including occult microscopic nodal involvement which occurs in around one-third of patients [77–79]. SLNB is therefore considered as an important procedure in MCC management as it allows the detection of nodal micro-metastasis (metastatic involvement of clinically or radiologically negative nodes) [59]. Tumour burden in the regional nodal basin was predictive of survival, with 40% and 27% 5-year OS for clinically occult and clinically detected nodal disease, respectively [27]. Moreover, the number of involved nodes proved to be strongly predictive of 5-year relative survival: 0 nodes, 76%; 1 node, 50%; 2 nodes, 47%; 3–5 nodes, 42% and  $\geq 6$  nodes, 24% [68]. This was also confirmed in a recently published large study showing that each additional metastatic node conferred an increased risk of death, even after adjusting for a variety of tumour- and patient-associated factors [80]. This effect was found to be most pronounced for the first 3 metastatic LNs, with an added 17% risk of death for each metastasis-positive LN. Beyond 3 LNs, the risk of death continued to increase at a reduced rate of 3% per each additional LN [80].

Patterns for first-site metastasis have reported regional lymph nodes in 87% and distant metastasis in 13% of patients (most commonly abdominal viscera and distant lymph nodes) [81]. In a study among elderly patients with MCC, liver metastasis proved to be an independent unfavourable prognostic factor [82].

Clinical and histological features associated with high-risk MCC (versus low risk MCC) are summarised in Table 5 below.

## 7.2. Preoperative/baseline staging work up

Initial staging includes full body skin examination with a clinical examination of all main nodal basins with particular consideration to the locoregional nodes.

MCC is clinically localised in 65% of cases and presents with nodal and distant metastasis in 26% and 8% of patients, respectively [27,31]. Imaging is encouraged to rule out regional and distant metastasis. Baseline cross-sectional imaging such as CT, PET-CT or magnetic resonance imaging (MRI) including at least the chest-abdomen-pelvis and draining node bed upstaged 13.2% of patients with MCC and with non-palpable regional lymph nodes (8.9% to radiographic nodal involvement and 4.3% to distant metastatic involvement). PET-CT appears more sensitive than CT alone. In a recent study, 16.8% of patients who underwent PET-CT imaging had their disease up-staged compared to 6.9% of those who received CT scans only ( $p = 0.0006$ ) [83].

The value of somatostatin receptor (SSTR) PET in the diagnosis of MCC metastatic spread cannot be definitively assessed yet. A clear advantage over 18 F FDG PET has not yet been demonstrated [84]. However, a potential additional benefit of SSTR PET lies in a better detection of brain metastases as well as the assessment of the possibility of radionuclide therapy with SSTR-specific radiotherapeutics (i.e. peptide receptor radionuclide therapy, yPRRT) [85,86].

Brain metastases occur only in 5% of patients with initial metastatic disease [87]. Therefore, brain MRI is not indicated in asymptomatic stage I-II patients.

The most reliable staging tool to identify subclinical nodal disease is SLNB. Thus, SLNB is recommended in all patients with MCC without clinically detectable lymph nodes, when feasible, if baseline imaging is negative [3, 83]. Before SLNB, regional lymph node ultrasonography (US) is recommended. In case of clinical/radiological suspicion of regional lymph nodes involvement, fine-needle aspiration or core biopsy is recommended.

Patients seronegative for MCPyV oncoprotein (ST-antigen) antibodies may have a higher risk of recurrence, while in seropositive patients, recurrence may be associated with a rising titre [3,59,88–90]. However, MCPyV oncoprotein antibody detection by ELISA (coated with GST-TAg) at diagnosis and during follow-up) is not a standard of care but should be further evaluated in prospective validation studies.

## 8. Management

### 8.1. Surgical therapy of the pT (Table S2)

Surgical excision is the first-line treatment for MCC; the goal is to achieve the removal of the primary lesion with histologically clear margins. This outcome, however, should be balanced with the morbidity of the surgical procedure and with a possible delay in adjuvant RT to the pT site, if a skin graft or a flap is needed for surgical closure. The optimal surgical margins have not been well defined yet since no randomised clinical trial has attempted to address this issue and most studies do not separately consider whether patients subsequently received adjuvant RT. Also, studies frequently include node negative and loco-regional disease in the same data analysis.

Two large retrospective studies (>6000 patients) reported significant differences in survival outcome measures between patients treated with narrow margins and those treated with wide surgical margins [91,92]. Andruska *et al.* [92] recently showed that clinical margins >1.0 cm improve OS (HR, 0.88; 95% CI, 0.81–0.95;  $P < .001$ ) compared with margins of 1.0 cm or smaller, regardless of tumour subsite, whereas no difference in OS was observed between margins of 1.1 cm–2.0 cm and margins larger than 2.0 cm (HR, 0.99; 95% CI, 0.83–1.19;  $P = .79$ ). This study was underpowered to evaluate the benefit of margins larger than 1.0 cm in the subgroup of patients with negative SNLB. Receiving adjuvant RT improved OS in patients in all excision margin groups [92]. According to Yan *et al.* [91], large excision margins do not significantly impact on survival rates in patients aged >75 years or with stage III MCC.

These results above, albeit based on a moderate level of evidence, support complete excision with clinical safety margins of 1 cm followed by adjuvant

Recommendation 1	
Preoperative staging procedure	Evidence-based recommendation
Level of recommendation B	<p><u>Clinical examination:</u> Full body skin examination with the clinical examination of all main lymph node basins</p> <p><u>Imaging:</u></p> <ul style="list-style-type: none"> <li>- 8–14 megahertz Ultrasound of regional nodal basin should be performed</li> <li>- Whole body imaging should be performed. If available, FDG PET/CT whole-body is preferable over contrast-enhanced CT-scan of neck/thorax/abdomen/pelvis [83]</li> <li>- Routine brain imaging is not recommended in asymptomatic stage I-II patients</li> </ul>
Level of evidence: 3-4	<p>Guidelines adaptation [3]</p> <p>Retrospective small sample study [83]</p>
Strength of consensus: 93%	



Recommendation 2	
Treatment of primary MCC tumour	Evidence-based recommendation
Grade of recommendation B	<ul style="list-style-type: none"> <li>Complete excision of the tumour with clinical safety margins of 1 cm followed by post-operative adjuvant RT on the tumour bed is the preferred treatment</li> </ul>
Level of evidence: 3	Retrospective large sample studies [91,92,98–103]
Strength of consensus: 92%	

RT as the preferred treatment. If no adjuvant RT is possible, safety margins of up to 2 cm should be performed. Excision of the tumour with clinical margins <1 cm followed by adjuvant RT can be acceptable in situations when obtaining wide surgical resection margins may be difficult or impossible due to patient or tumour-related factors or would postpone RT.

Comparison of wide local excision and Mohs micrographic surgery yielded similar OS and cancer-specific survival rates for the treatment of pTs [93–97]. Mohs micrographic surgery can be considered a safe and effective alternative to standard wide local excision, especially for cosmetically and functionally sensitive areas as the head and neck, allowing a tissue sparing approach.

### 8.2. Sentinel lymph node biopsy, clinically-identified lymph node metastases and indication to subsequent complete lymph node dissection

In patients with MCC, SLNB has shown a rate of microscopic metastases between 24% and 48% in the different available studies (Table S3). This supports the recommendation to use SLNB as routine staging in patients with primary clinical stage I/II MCC.

Results from the SEER Database show a better disease-specific survival in patients with a negative SLNB versus a positive SLNB (84.5% versus 64.6%) [105]. Undergoing a SLNB was also borderline significantly associated with an improved survival [105]; however, selection bias of younger, less frail patients is a likely cause for this observation due to the retrospective design of the study and lack of therapeutic effect of SLNB for other cancers [105].

Furthermore, when considering the potential therapeutic advantage of having a SLNB, it's likely, that patients who had a positive SLNB were selected for further adjuvant RT and that this might confer a benefit [104,105].

In summary, positive SLNB has been associated with decreased overall and disease-specific survival in large

Recommendation 3	
Sentinel lymph node biopsy	Evidence-based recommendation
Grade of recommendation B	Sentinel lymph node biopsy should be offered in the absence of clinical or imaging evidence for nodal or distant metastases.
Level of evidence: 2-3	Prospective large simple study [104] Retrospective large sample studies [105,106,109] Systemic review [110] Strength of consensus: 96%

database analyses and is thus recognised as a prognostic factor for poor outcome [102–105]. These findings were also observed in shorter cases series, whilst other reports failed to find a significant relationship between SLNB status and recurrence or survival [106,107] (Table S3).

In view of these results, SLNB should be offered as a staging procedure for patients with MCC without evidence of nodal metastases clinically or by imaging (stage I-II). Patient's age, performance status and anatomic location of the pT must be considered carefully by the tumour board (Table S3, recommendation 3).

### 8.3. CLND

No prospective studies have analysed the outcome of completion lymph node dissection in patients with MCC and nodal involvement, either microscopically or clinically detected. In a monocentric prospective study enrolling 163 patients, there was no significant difference in 5-year disease specific survival, disease-free survival and nodal recurrence-free survival between patients with microscopic nodal disease detected by SLNB undergoing CLND versus RT [111] (Table S4). However, patients with non-sentinel lymph node (SLN) involvement showed a significantly worse disease-specific and disease-free survival compared to patients without non-SLN metastases after CLND [111].

A retrospective analysis of the National Cancer Database on 447 MCC with positive SNLB did not find a significant improved OS after CLND compared to observation (HR 0.62, CI 0.33–1.16), but the study was clearly underpowered. In the same study, adjuvant RT increased significantly survival (HR 0.48, CI 0.28–0.82). Moreover, both observation (HR 3.54, CI 1.36–9.18) and CLND alone (HR 2.54, CI 1.03–6.27) were associated with worse OS compared to CLND and adjuvant RT [112]. A retrospective case series based on only 71 SLNB-positive MCC did not find significant improvement of recurrence-free survival, overall and disease-

specific survival with respect to CLND and RT alone [113] (Table S4). These results, albeit based on a moderate-to-low level of evidence, along with the high risk of lymphatic spread of MCC support the recom-

Recommendation 4a	
Management of microscopic nodal metastases	Consensus-based recommendation
GCP	In patients with microscopic nodal disease (positive SLNB), adjuvant RT alone (50–55 Gy see RT section) or eventually combined with CLND is preferred over CLND alone, which could constitute an option in case adjuvant RT is not possible
Strength of consensus: 81%	

Recommendation 4 b	
Management of nodal metastases identified clinically or by imaging	Consensus-based recommendation
GCP	Therapeutic lymph node dissection should be performed in patients with nodal metastases identified clinically or by imaging. Strength of consensus: 92%

mendation of RT alone or eventually combined with CLND in patients with microscopic metastasis to the sentinel node (recommendation 4a).

No studies specifically analysed the outcomes of CLND in patients with MCC and with nodal disease detected either clinically or by imaging tests. However, the recommendation of offering CLND to any patient with macroscopic nodal metastasis is supported by a broad consensus (Table S4, recommendation 4 b).

#### 8.4. Radiotherapy: primary and regional disease (Table S5, S6)

As MCC cells are highly sensitive to radiation [114], RT is a major therapeutic tool at diverse disease stages.

Since MCC is a rare disease, no data are available from randomised controlled studies. Several large registry studies and retrospective case series strongly suggest that, after surgical excision, **adjuvant RT to the pT bed** improves local and regional relapse-free survival [98,115], disease-free survival [22,109,116,117], distant metastasis-free survival and OS [109,118] when compared to surgery alone without adjuvant RT. RT effects could particularly impact on large tumours [119]

and MCC of the head and neck [120]. Adjuvant RT should be performed within the first 8 weeks following surgery [98].

Omitting adjuvant RT was recently suggested for small (<2 cm, stage I), margin-free tumours in patients with the following features: pathologically negative lymph nodes and no risk factors, such as lymphatic-vascular invasion, pT in the head and neck area [121], absence of a correct pathological assessment of the lymph node status, immunosuppression and lymphoproliferative diseases. As the study is small sized and all the unfavourable factors were not precisely defined, decision-making on this option needs to be shared by the multidisciplinary team [122] (Table S5).

Due to the introduction of SLNB as the standard approach in clinically node-negative patients, an underpowered randomised trial was prematurely closed. It did, however, demonstrate that **prophylactic RT to the regional nodes** was associated with increased regional relapse-free survival but not an improved OS [123]. As stated in Recommendation 4a, in patients with microscopic nodal disease (positive SLNB), 50–55 Gy adjuvant RT is the preferred choice.

No differences in OS emerged whether patients with nodal metastases (stage III) received adjuvant RT or not [118]. In some series, adjuvant RT significantly improved regional control [124,125] and disease-free or -specific survival [106,116]. Definitive conclusions are hard to reach as data on the irradiated volumes were sometimes lacking and patients were enrolled at different stages of disease and with clinical and pathological nodal involvement.

In patients not eligible to SLNB in the head and neck region, radical RT can be suggested (SLNB is not performed and the only treatment is RT with a radical and curative intent.) [3].

**In macroscopic stage III disease**, adjuvant RT is generally recommended after regional CLND, particularly in cases of multiple node involvement and/or extracapsular extension. In a retrospective study of stage III patients, **lymph node irradiation alone to positive regional lymph nodes** conferred an excellent regional control rate that was comparable to CLND for both microscopic and palpable lymph node disease, without improving OS [126] (Table S6).

Data from a large registry study suggested doses from 40 to fewer than 50 Gy adjuvant RT are adequate in stage I–III MCC of the trunk or extremities. Compared with the group who received 50–55 Gy, OS was equivalent in groups receiving 40 to <50 Gy or >55–70 Gy. It was worse in the group that received >30 to <40 Gy [127]. Data also showed that optimal adjuvant RT doses are 50–55 Gy in head and neck MCC [128]. Regardless of the tumour site, higher doses are required when margins are positive, up to 60 and 66 Gy for microscopically and macroscopically positive margins, respectively [3]. Fractionation is conventional, with 2 Gy

Recommendations 5	
Adjuvant radiotherapy on the primary tumour bed	Evidence-based recommendation
Grade of recommendation B	Adjuvant RT (doses: see text) to the primary tumour bed should be performed within 8 weeks of surgical excision.
Level of evidence 3	Retrospective large sample studies [109,115–118] [22] Strength of consensus: 93%

Recommendation 6	
Adjuvant radiotherapy after lymphadenectomy for clinically involved nodal basin	Consensus-based recommendation
GCP	Adjuvant RT (doses: see text) should be discussed in a multidisciplinary board after complete lymph node dissection for clinical or radiological nodal disease Strength of consensus: 93%

Recommendation 7	
Palliative radiation therapy for primary tumours or clinically involved lymph node basin disease	Evidence-based recommendation
Grade of recommendation C	Palliative radiotherapy alone can be suggested in frail patients to treat primary tumours and/or nodal involvement when surgery is not feasible
Level of evidence 3-4	Retrospective small sample studies [129,130] Strength of consensus: 85%

single dose. A bolus should be considered to ensure an adequate skin dose [3].

For frail patients and/or tumours in difficult areas where surgery is not feasible, RT to the pT ± lymph nodes seems to be a valid option which, however, should be discussed in a multidisciplinary team. When performance status is good, RT total dose should be 60–66 Gy, with 2Gy single dose [3]. Moderate hypofractionated schedules may be taken into account, mainly in elderly patients, as they reduce their hospital attendances for RT [129,130].

- Treatment of locally advanced and metastatic disease & Adjuvant, neoadjuvant systemic therapy (state of the art, trials)

## 8.5. Treatment of locally advanced and metastatic MCC

In metastatic disease, the historical 5-year survival is at 13.5% [27]. Until 2017, recommendations for systemic therapy of advanced MCC were based on data usually obtained by single-centre and oligo-centre, mostly retrospective analyses as well as on data inferred from other tumour entities such as small-cell lung carcinomas and personal experience.

Based on an increased understanding of the biology of MCC in recent years and the development of immunotherapy with check-point inhibitors in other tumour types, prospective phase I/II immunotherapy trials have demonstrated encouraging results. While there are no randomised clinical trials available to guide the recommendations for advanced MCC treatment on a high level of evidence, the superiority in the mid-term outcomes of these immunotherapy phase I/II trials compared to historic data on cytotoxic therapies makes such a study design ethically difficult and out of date. However, as combination therapies will likely enter the field of MCC, participation in clinical trials, if available, should be encouraged.

Multidisciplinary tumour board consultations (dermatologist, surgeon and radiotherapist) for patients with advanced MCC are needed to consider all options for the management of advanced MCC cases.

### 8.5.1. Immunotherapy

**8.5.1.1. Rationale.** There are clinical and scientific data available implying that MCC is an immunosensitive solid malignancy. MCC often develops in immunodeficient patients, and spontaneous regression of pTs has been observed occasionally. Both MCPyV-negative MCC, which is known to harbour a high burden of UV-induced somatic tumour mutations which can serve as neo-antigens and MCPyV-positive MCC, which expresses viral oncogenes, can provide a basis for the immune recognition of MCC [131]. Approximately 50% of MCC cells express PD-L1 on their surface, while tumour-infiltrating lymphocytes and circulating MCPyV-specific T cells express PD-1 [132]. This PD-1/PD-L1 pathway is known to contribute to local immune evasion by inhibiting T-cell activation and impairing the CD8/Treg ratio. In MCC, like in many other tumours, PD-1 and PD-L1 inhibitors are thus expected to restore T-cell-dependent antitumour response. Anti-PD-L1 antibodies could also play a role through NK-cell-dependent ADCC [133] against PD-L1 positive malignant cells and cells of the tumour microenvironment [133,134].

**8.5.1.2. Anti-PD-1/PD-L1 agents in MCC.** PD-1/PD-L1 inhibition has been investigated in advanced MCC in phase-1/2 trials. The results of three phase –2 [135]

Table 6  
Summary of 4 Phase II anti PD-1/PD-L1 trials.

Trial	Pembrolizumab [136]	Avelumab [135] updated in SITC2019	Nivolumab [138]	Avelumab [134] Updated in ASCO2021
N	50	116	25	88
Line	1st	1st	1st, 2nd and 3rd	>2nd
ORR (CR)	56% (24%)	39.7 (16.4%)	68% (14%)	33.0% (11.4%)
Median PFS (months) (95%CI)	16.8 (4.6 – NR)	4.1 (1.4–6.1)	NA	2.7 (1.4,6.9)
Median OS (months) (95%CI)	NR (26-NR)	20 (12.4-NR)	NA	12.6 (7.5–17.1)
1-year OS %, (95%CI)	~73 (NA)	60 (50–68)	NA	50 (39–60)
2-year OS %, (95%CI)	68.7% (NA)	NA	NA	36 (26–46)
3-year OS %, (95%CI)	NA	NA	NA	32 (23–42)
5-year OS % (95%CI)	NA	NA	NA	26 (17–36)
Follow-up (months) (range)	14.9 (0.4–36.4+)	21.2 (14.9–36.6)	6.5 (1.3–8.8)	65.1 (60.8–74.1)

[136,137], and 1 phase I trial [138] have been published and are summarised in Table 6.

**8.5.1.2.1. Avelumab.** Avelumab is a fully human anti-PD-L1 antibody [133], which was first evaluated in a phase II trial on 88 previously treated patients (JAVELIN Merkel 200 trial) [134,139,140] at 10 mg/kg every 2 weeks with a median follow-up of 65.1 months (range 60.8–74.1 months). The overall response rate (ORR) was 33.0% (95% CI 23.3%–43.8%), including a complete response (CR) of 11.4% (10 patients) [134]. The median progression-free survival (PFS) was 2.7 months (95% CI, 1.4–6.9). However [140], the median duration of responses was 40.5 months (95% CI 18.0 months not estimable), showing that responding patients benefit in the long-term, which was not seen with conventional chemotherapies. The median OS was 12.6 months (95% CI 7.5–17.1 months), the 3-year OS rate was 32% (95% CI 23%–42%), and the most recent update at ASCO2021 showed a 5-year OS rate of 26% (95%CI 17%–36%), thus confirming durable responses and a potential survival benefit in an indirect comparison to chemotherapies (Abstract No. 9517 ASCO 2021). Of long-term survivors (OS > 36 months) evaluable for PD-L1 expression status (n = 22), 81.8% had PD-L1+ tumours [134]. Moreover, longer median OS (12.9 months [95% CI, 8.7–29.6 months] versus 7.3 months [95% CI, 3.4–14.0 months], respectively) and a

higher 5-year OS rate (28% [95% CI, 17%–40%] versus 19% [95% CI, 5%–40%]) were observed in patients with PD-L1+ versus PD-L1– tumours. Patients who experienced irAEs seem to have better outcome (HR 0.71, 95% CI, 0.59 to 0.85) using the time-dependent Cox model. The JAVELIN Merkel 200 part B was recently updated at the Society for Immunotherapy of Cancer congress 2019 and focused on 116 treatment-naïve patients, also using avelumab 10 mg/kg every two weeks. After a median follow-up of only 21.2 months (range: 14.9–36.6), response was higher than in the second-line cohort with an ORR of 39.7% (95% CI, 30.7%–49.2%). The median PFS was 4.1 months (95% CI, 1.4–6.1), higher than previous retrospective reports for chemotherapy in the same population for which median PFS ranged from 3 to 5 months. The median OS reached 20 months (95% CI, 12.4-NR). The avelumab flat dose of 800 mg IV every 2 weeks is currently recommended for all cancer entities.

After approval, a real-world experience with avelumab in patients with mMCC from an expanded access program was published [141] and confirmed efficacy and safety data of the registrational study, 494 patients received avelumab in the expanded access program. Among 240 evaluable patients, the objective response rate was 46.7%. The median duration of treatment in evaluable patients with response was 7.9 months (range,

Table 7  
Recommended follow-up for patients with MCC.

Stage	Clin			Nodal sonography			Contrast-enhanced neck/thorax/abdomen/pelvis CT or FDG PET/CT whole-body, Brain MRI		
	1–3	4–5	6–10	1–3	4–5	6–10	1–3	4–5	6–10
Year	1–3	4–5	6–10	1–3	4–5	6–10	1–3	4–5	6–10
Baseline	Full body clinical examination 8-14 megahertz ultrasound of regional nodal basin Whole body imaging FDG PET/CT (preferred)/contrast-enhanced neck/thorax/abdomen/pelvis CT Brain MRI for stage ≥ III or symptomatic patients								
stage Tis-II	3–6 mo	12 mo	X	3–6 mo	x	x	x	x	x
≥III	3mo	6 mo	12 mo	3mo	6 mo	x	3–6 mo	6–12 mo	x
IV**	Adapt clinical visits, laboratory examinations and imaging according to treatment and symptoms								



1.0–41.7) overall and 5.2 months (range, 3.0–13.9) in immunocompromised patients. No new safety signals were identified.

**8.5.1.2.2. Pembrolizumab.** Pembrolizumab is a humanised IgG4 antibody directed against PD-1. A multicentre phase-2 trial (Keynote-017) evaluated pembrolizumab 2 mg/kg every 3 weeks for up to 2 years in 50 patients with treatment-naïve advanced MCC. The median follow-up time was 14.9 months (range, 0.4 to 36.4+ months). ORR was 56% (95% CI, 41.3%–70.0%) with CR and PR rates of 24% and 32%, respectively. The median duration of response was not reached and median PFS was 16.8 months (95% CI, 4.6 months to not estimable). The 2-year OS was 68.7% and median OS was not reached [136]. These data confirm the high efficacy of anti-PD-1/PD-L1 blockade in treatment-naïve patients.

**8.5.1.2.3. Nivolumab.** Nivolumab, a fully human IgG4 antibody against PD-1 was evaluated in patients with previously untreated advanced MCC (60%) or in previously treated patients (1–2 previous systemic therapies; 40%) in the Checkmate 358 trial, that includes patients with virus-associated malignancies. Nivolumab was given at 240 mg every 2 weeks with a median follow-up of 26 weeks (range, 5–35 weeks). Twenty-five patients were enrolled. ORR was 68% for the overall population: 71% for treatment-naïve patients and 63% for pre-treated patients. With a very short follow-up, at 3 months, PFS and OS rates were 82% and 92%, respectively [138].

**8.5.1.3. Safety profile of anti-PD-(L)1 agent.** The safety profile of anti PD-(L)1 immune check point inhibitors in MCC showed that these drugs were generally well-tolerated and that their side-effects were comparable to known side-effects in other indications for solid tumours. Grade 3–4 adverse events did occur in 11.4–28% of treated patients and treatment-related adverse event leading to treatment discontinuation in 9.1–15.4%. Only one treatment-related death occurred during these trials [134–136,138].

**8.5.1.4. Biomarkers associated with response.** Clinical benefit was not consistently predicted by any single biomarker [134].

**8.5.1.4.1. PD-L1 status.** Although statistical significance was not reached [136], PD-L1 positive tumours were more likely MCPyV-positive [136]. A trend for higher OS rates was observed in patients with PD-L1 positive versus PD-L1 negative tumours but did not reach statistical significance [134,136]. PD-L1 was also positive in most long-term survivors suggesting that patients with PD-L1 positive tumours may have a higher probability of long-term survival [134].

**8.5.1.4.2. Tumour mutational burden.** High tumour mutational burden was generally associated with MCPyV negativity. There was a trend for increasing

efficacy (PFS and OS) in patient with high mutational burden tumours.

**8.5.1.4.3. Tumour MCPyV status.** Virus-positive or virus-negative status was evaluated in several trials and no strong association with anti-PD(L)1 efficacy was shown [134,136].

The response rate was particularly high in tumours combining 3 factors: high mutational burden, MCPyV negative and high CD8+ T cell density at the invasive margin [134].

Additional work is needed to further investigate these biomarker findings.

**8.5.1.5. Immunotherapy discontinuation.** Data on ICI discontinuation for other reason than progressive disease from a multicentre retrospective cohort of patients were recently presented at ASCO 2021. ICI responses in metastatic MCC do not appear to be as durable off treatment as in other cancers, including those patients who achieve a complete response since 35% of all patients (n = 40) had progressed within a median time of 5.5 months (range 4–29) after treatment discontinuation including 26% of complete responders although these patients were less likely to progress p = 0.044. A trend for an association between progression and short duration of treatment was observed but not significantly demonstrated. Initial data on response to retreatment were, however, promising: 75% of patients (n = 8; 4CR, 2 PR) did show a response that was ongoing after a median follow-up of 10 months after the restart of treatment. Limitations of the study, however, include a small patient sample, the lack of predefined common treatment duration and that nearly 40% of patients stopped therapy due to toxicity or other reasons than a major response. Further research is therefore needed to define the optimal duration of

---

#### Recommendation 8

---

First-line treatment for inoperable locally advanced or metastatic MCC	Evidence-based recommendation
Grade of recommendation: A	Immunocompetent patients with locally advanced or metastatic MCC (surgery no feasible) shall receive anti PD-(L)1 -based immunotherapy as first line treatment.
Level of evidence: 2	Phase II study of avelumab* [134,135] Phase II study of pembrolizumab [136] Phase I/II study of nivolumab [138]
Strength of consensus: 100%	

---

ICI treatment and predictors of long-term ICI responses (Abstract #336113, ASCO 2021).

### 8.5.2. Chemotherapy

Before immune therapy, there was no standard of care but management relied either on best supportive care or chemotherapy regimen selected on the basis of histological similarity to small-cell lung carcinoma. These regimens include platinum-based drugs, etoposide, taxanes and anthracyclins, either alone or in various combinations, mainly reported in case-reports, case series, retrospective studies or literature reviews. One of the most frequently used regimen for patients with good performance status was a combination of platinum and etoposide (Cisplatin 60–80 mg/m<sup>2</sup> IV on day 1 plus etoposide 80–120 mg/m<sup>2</sup> IV on days 1–3 every 21–28 d or Carboplatin AUC 5 IV on day 1 plus etoposide 80–100 mg/m<sup>2</sup> IV on days 1–3 every 28 d). A recent comprehensive, systematic review of chemotherapy regimens in patients with advanced MCC identified 35 publications [142]: ORR in these publications ranged from 23% to 61%, with higher response rates in the first-line setting (53–61%) than in second-line therapy (23–45%). The median PFS was short: 3.1 months in the first-line setting versus 2 months in the second-line setting [143], suggesting no durable response. The median OS was reported in only two of the five retrospective studies/literature reviews, ranging from 9 to 9.5 months [143,144]. Moreover, chemotherapy is associated with a high-risk of toxicity, particularly in elderly patients who frequently have impaired liver and kidney function as well as a limited bone marrow reserve. The most common adverse effects are those of aggressive chemotherapy: myelosuppression, sepsis, fatigue, alopecia, nausea/vomiting and renal injury [144]. Death from chemotherapy-related toxicities was therefore very high, ranging from 3% to 10% of the reported patients [60]. For all these reasons, chemotherapy

can only be considered as a palliative strategy after failure or contraindication to immunotherapy.

### 8.5.3. Immunotherapy in the adjuvant setting

Adjuvant treatment with ipilimumab versus observation was tested in a randomised DeCOG phase-2 trial ('ADMEC') in Germany, but prematurely closed due to a futility analysis. After the inclusion of just 40 patients, no difference in PFS had been observed and ipilimumab caused significant toxicities [145]. The subsequent randomised phase-2 trial of the DeCOG ('ADMEC-O') compares the efficacy of nivolumab versus observation alone in 180 patients randomised in a 2:1 ratio, but data are not yet available [146]. A few clinical trials are ongoing (NCT04291885, NCT03271372, NCT03712605) and results are awaited.

### 8.5.4. Immunotherapy in the neoadjuvant setting

In a neo-adjuvant cohort of CheckMate 358, patients with resectable MCC received nivolumab 240 mg intravenously on days 1 and 15. Surgery was planned on day 29.39 patients with AJCC stage IIA-IV resectable MCC received  $\geq 1$  nivolumab dose. Three patients (7.7%) did not undergo surgery because of tumour progression (n = 1) or adverse events (n = 2). Any-grade treatment-related adverse events occurred in 18 patients (46.2%) and grade 3–4 events in 3 patients (7.7%), with no unexpected toxicities. Among 36 patients who underwent surgery, 17 (47.2%) patients achieved a complete pathologic response (pCR). Among 33 radiographically evaluable patients who underwent surgery, 18 (54.5%) patients had tumour reductions  $\geq 30\%$ . Responses were observed regardless of tumour MCPyV, PD-L1 or TMB status. At a median follow-up of 20.3 months, median recurrence-free survival (RFS) and OS were not reached. RFS significantly correlated with pCR and radiographic response at the time of surgery. No patient with a pCR had tumour relapse during observation [147].

### 8.5.5. Ongoing clinical trials with a novel approach

Despite very encouraging results obtained with PD-1/PD-L1 blockade, approximately 50% of patients with advanced MCC do not have a durable benefit due to the primary and secondary resistances of unknown mechanisms, highlighting the need for further clinical trials.

Because advanced MCC is a rare disease that precludes robust randomised studies, enrolment in clinical trials is encouraged whenever available and appropriate [148]. Many hypotheses are currently being tested in early trials. Main ongoing trials are listed in Table S7.

Recommendation 9	
Chemotherapy for locally advanced or metastatic MCC	Evidence-based recommendation
Grade of recommendation: C	Chemotherapy can be used when patients fail to respond, are intolerant or present contraindication to anti-PD-(L)1 immunotherapy, or when immunotherapy or clinical trials are not available
Level of evidence: 3-4	Systematic review of 35 studies including retrospective studies and cases series [142]
Strength of consensus: 100%	

Recommendation 10	
Clinical trials for locally advanced or metastatic MCC	Consensus-based recommendation
GCP	If available and appropriate, inclusion in clinical trial should be encouraged
Strength of consensus: 100%	

#### 8.5.6. Locoregional control and palliative radiotherapy

The place of isolated hyperthermic limb perfusion with alkeran and actinomycin D or isolated limb perfusion with TNF and alkeran combination therapy remains uncertain despite some favourable results in case reports or small retrospective and prospective cohort studies [149,150].

In advanced patients with MCC, RT is routinely performed with palliative intent for symptomatic lesions either alone or combined to systemic therapies: 8 Gy in one session may be enough to reduce tumour burden providing durable palliation [151]. Other hypofractionated schedules can be used in the palliative treatment setting, such as 20 Gy in five fractions [129]. Stereotactic RT (i.e. a local ablative treatment which delivers over 5 Gy per fraction in 1–5 fractions) is suitable for oligometastatic disease i.e. up to 5 small metastatic lesions in the brain or extracranial organs. RT is indicated for in-transit metastases which cannot be resected surgically. External beam RT or brachytherapy, although not in widespread use, are both valid options [152,153].

### 9. Quality of life, Palliative, Best supportive care

The mean age of patients diagnosed with MCC is 77 years. Whilst the prognosis for patients with MCC is overall poor, advanced age worsens the prognosis [154]. Older age is associated with increased comorbidity burden and frailty [155]. But chronological age alone provides limited information to physicians. Therefore, incorporating geriatric assessments, such as a comprehensive geriatric assessment allows a better understanding of the patients' functional status, as well as planning interventions to optimise and/or better support vulnerable/frail patients [156]. But beyond that, this provides important information regarding the patient's individual risk and prognosis which supports the shared decision-making process when determining the best treatment plan. However, these assessments are not necessary for all older patients. Therefore, implementing validated screening tools, such as Geriatric 8 (G8), is a strategy to identify those older patients who may benefit the most from more in-depth assessments and support [157].

The impact of the vulnerability of many of these patients with MCC was highlighted in an observational study with 500 patients with MCC and with a median age at diagnosis of 71 years who had been treated at a single centre. It found that half of the patients died during a median follow-up of 3 years. Yet, whilst 25% died due to MCC, the other 24% died of other causes [71].

Health-related quality of life (HRQoL) is another important consideration when determining the best treatment plan. Older patients with cancer often value quality of life more than survival outcomes. Therefore, incorporating this information at decision timepoints is paramount [158]. Furthermore, assessing HRQoL at baseline and monitoring throughout a treatment pathway is a key to intervene time and meet the patients' needs. This is particularly important when a curative-intent treatment is not appropriate, and the prognosis is poor. Several HRQoL tools have been developed and are widely used, such as the EORTC QLQ-C30 [158].

Patients and their carers often suffer from both physical and psychological distress which fluctuates throughout the cancer journey, being at times worsened by the treatments provided. Therefore, similarly to what is advocated in other cancer types, an early integration with palliative and supportive care should be promoted.

Apart from the potential side-effects and toxicity caused by the MCC treatments, which may require targeted interventions, the tumour itself is a frequent cause of symptoms which can have a great impact in the HRQoL and the well-being of patients. The key symptoms related to the pT and local cancer involvement are pain, ulceration, exudate and odour.

Pain should be assessed regularly using validated pain scales [159]. The visual analogue scale, the verbal rating scale and the numerical rating scale (NRS) are most frequently used. When the score exceeds 2, a conversation about pain is required. Analgesics for chronic pain are best taken orally and should be prescribed on a regular basis instead of an 'as required' schedule [159]. The WHO proposes a sequential three-step analgesic ladder strategy, from non-opioids (paracetamol, anti-inflammatory drugs (NSAIDs)) to weak opioids to strong opioids according to pain scores [160]. However, in case a patient already suffers from intermediate (NRS  $\geq 4$ ) to severe (NRS  $\geq 7$ ) pain, weak opioids (e.g. tramadol, dihydrocodeine and codeine) might be best added to the mild analgesics immediately.

Regarding ulcerating wounds, surgery and RT are effective palliative treatments but this is not always possible. The first step in odor prevention is daily rinsing with tap water or sodium chloride cleaning fluid. In a large review, evidence was found for topical metronidazole (gel or solution of metronidazole in concentrations of 0.75%–0.8% once daily for at least 14 days), sodium chloride dressing, activated carbon dressing and curcumin ointment [161]. Metronidazole is effective

Recommendation 11	
Geriatric assessments	Consensus-based recommendation
GCP	Older patients should undergo frailty screening at decision-making timepoints and further geriatric assessments should be implemented as required
Strength of consensus: 96%	

Recommendation 12	
Quality of life	Consensus-based recommendation
GCP	Health-related QoL (HRQoL) tools and pain scales should be encouraged for patients with MCC before, during and after treatment.
Strength of consensus: 96%	

Recommendation 13	
Palliative and supportive care referrals	Consensus-based recommendation
GCP	Early referral to supportive and palliative care team should be done particularly for patients with symptomatic locally advanced or metastatic disease.
Strength of consensus: 96%	

against anaerobic bacteria and protozoa. It can also be administered orally (3 times daily 500 mg for 10–14 days). Absorbent dressing made up of viscose or polyester impregnated with sodium chloride acts through the hypertonic effect produced on the lesion [161]. In a randomised study, including 24 patients, 0.2% polyhexamethylene biguanide proved to be equally effective as metronidazole 0.8% solution in treatment of odor; 100% achieved no wound odor by day 8 ( $P < .001$ ) [162]. Furthermore, odor control significantly improved the general HRQoL.

Bleeding can also occur in MCC evolution and impair patients' outcome. Treatments strategies depend on bleeding severity and are based on local modalities, such as haemostatic agents and dressings, RT, endoscopic ligation and coagulation in case of gastrointestinal bleeding and transcutaneous arterial embolization [163].

## 10. Selected cases: management of patients in immunosuppressed patients

### 10.1. Epidemiology

As discussed in the epidemiology section, immunosuppression is a significant risk factor for MCC

[59,164,165]. And 11.7% of all patients with MCC are immunosuppressed [166].

Among immunosuppressed patients:

- SOTRs have more than 20-fold increased incidence ( $SIR = 24$  to 97) of MCC compared with the immunocompetent population and this increases with time post-transplant [167,168]. This higher risk is attributable to reduced immune surveillance resulting from immunosuppressive medication and from direct mutagenic effects of some immunosuppressive drugs, including azathioprine and ciclosporin [167] [38,169,170] [168].
- Haematological malignancies such as non-Hodgkin lymphoma (NHL) and CLL are associated with a 3- to 8-fold increased risk of non melanoma skin cancers including MCC in comparison with the immunocompetent population ( $SIR = 3.64$  in haematological malignancies in general and 6.89 in CLL in particular) [33–35]. Impaired immune function is the main driver, particularly in CLL which is characterised by impaired B cell function, decreased T-helper cell activity and increased regulatory T-cell activity. Anticancer treatments including chemotherapy may also contribute to immune dysregulation [35,171].
- HIV infection/AIDS confers an increased risk of 11- to 13-fold in comparison with the immunocompetent population and this is linked to immunosuppression through depletion of CD4+T cells [36,37,172].
- Immune-mediated inflammatory diseases such as inflammatory bowel disease and rheumatoid arthritis on treatment are also associated with an increased risk of MCC due to immunosuppressive medication or immune system dysregulation [173,174].

Although age at diagnosis and stage of disease are similar in immune-suppressed and immunocompetent individuals overall [166,170], the specific type of immunosuppression is also relevant: for patients with HIV/AIDS and solid organ transplantation age at diagnosis is significantly lower and they present with more advanced disease in comparison to the other immunosuppressed groups such as haematological malignancies [175]. SLN positivity rate is also higher at diagnosis in immunosuppressed patients, although the implication for OS is not conclusive [166,175].

### 10.2. Outcomes

In immunosuppressed patients with MCC, the disease course is more aggressive [175] [171,176,177], regardless of competing comorbidities [169,175]. MCC-specific survival is decreased in immunocompromised patients in comparison with the immunocompetent population (40% versus 74% at 3-years, respectively; HR 6.11 [1.61–23.26];  $P = .008$ ) [31,97,170,175] and for each type of immunosuppression, except for NHL [35]. This is particularly significant for HIV/AIDS and OTRs compared with other immunocompromised states although PFS is not decreased [175]. Immunocompromised patients also have a higher risk of recurrence



(HR:3.67 [1.80–7.51];  $P < .0001$ ) with a 5-year RFS of 43% [175].

### 10.3. Management

Because of the potentially aggressive nature of MCC, the inevitable complexity of individual cases and the paucity of evidence to guide management in immune deficiency, a multidisciplinary approach to clinical decision-making is particularly important.

#### 10.3.1. Surgery and radiotherapy

In addition to higher rates of local recurrence after surgery [175], efficacy of RT for MCC at standard doses is also impaired, with higher local recurrence rates after palliative RT and reduced PFS with curative-intent RT [151,177]. The mechanism of this apparent radio-resistance is unclear but reduced immune surveillance may allow the unchecked growth of residual microscopic tumour cells after RT, and it has been suggested that the intensification of RT for immunocompromised individuals should be considered [177]. However, this difference is not observed for adjuvant RT, with no differences in OS according to immune status in either stage I/II or III MCC (both  $P$  values  $> 0.05$ ) [65], thus suggesting adjuvant RT should be considered at standard doses not only for immunocompetent but also for immunosuppressed patients with localised MCC.

#### 10.3.2. Immune checkpoint inhibitors

Because immune deficiency has been an exclusion criterion in pivotal clinical trials, data concerning ICI efficacy and adverse effects in immunocompromised patients with advanced MCC are limited. Small cohort studies or systematic literature review of immunocompromised patients with several solid tumours treated with ICI have been reported, which demonstrated encouraging results in global tumour control rates, higher in kidney versus liver OTRs. Allograft function was preserved in two-third of patients and death was most frequently linked to the progression of malignancy [178,179]. Only few cases of MCC in OTRs population receiving ICI have been reported and no data from large retrospective or prospective cohorts are available. Therefore, further studies are needed to investigate MCC outcome with ICI in SOTRs [180].

In haematological malignancies (mainly CLL and NHL), data from a real-world retrospective, multicenter, DeCoG study (MCC  $n = 16$ ) reported similar OS but lower PFS outcomes than those reported for immunocompetent patients in clinical trials, but no significant differences were observed after comparing with real-world registry-based patient cohorts without haematological malignancies [181]. Published case series and case reports provide support that advanced MCC in patients with HIV/AIDS may also respond favourably to ICIs, despite low CD4 counts [182–185].

#### 10.3.3. Modification of immunosuppressive therapy

Few studies have addressed the optimal modification of immunosuppressive therapy in OTRs and other iatrogenically immunosuppressed patients diagnosed with MCC. However, extrapolating from other skin cancers including cSCC, the risk/benefit ratio of minimising immunosuppressive drugs should be considered and discussed on a case-by case basis. Similarly, although switching to mTOR inhibitors has been demonstrated to reduce subsequent tumours for OTRs after the first cSCC in secondary prevention (cancer recurrence) [186–188], there is currently no objective evidence that this is the case for MCC and for metastatic disease.

In summary, the epidemiology and outcomes for MCC in the context of immune deficiency are well-established. However, there remain major evidence gaps relating to management, particularly of advanced disease, and clinical trials in this area are now a research priority.

## 11. Follow-up and recurrence

### 11.1. General concepts

Follow-up of MCC, as for any cancer, aims at 3 main goals:

- First, to detect recurrence at an earlier stage;
- Second, to detect second primary cancers at an early stage;
- Third, to manage potential side-effects of local or systemic treatment.

### 11.2. Risk for recurrence

MCC has a generally high-risk for recurrence varying between 25% and 50%, and the risk of recurrence increases with tumour stage, location of the pT, age, sex, viral MCPyV status and immunosuppression. The risk for recurrence is highest within the first 2–3 years after initial diagnosis with about 40%–50% of patients developing nodal metastases (not only regional) and about 33% distant metastases [27,108,189,190].

Most common sites of distant metastases are the skin/soft tissue (25%), liver (23%), bone (21%), pancreas (8%), lung (7%) and brain (5%) [81,87,191]. The frequency of specific sites of spread influences the choice of imaging and laboratory investigations during follow-up.

### 11.3. Risk of secondary cancers

There are lines of evidence suggesting that patients with MCC are also at increased risk of developing secondary cancers, especially skin cancers such as melanoma and other non-melanoma skin cancers. This is supported by common UV-dependent pathogenic mechanisms. Further, MCC may also be associated with haematologic co-morbidities such as CLL [192,193].

#### 11.4. Clinical and imaging visits

As a general rule, follow-up of MCC should include a careful regular full body skin examination coupled with dermoscopy carried out by a trained dermatologist, physical palpation of the scar, the surrounding skin and nodal areas, as well as radiologic imaging such as ultrasound of the lymph nodes, CT scans, MRI and PET-CT which is more sensitive than CT alone [83]. Performing SSTR PET for MCC follow-up is another option whose value is not yet definitively assessed (cf staging paragraph above) [84–86]. Schedule of imaging is not yet standardised.

A recently introduced web-based risk calculator considering relevant factors may be helpful in assessing the risk of recurrence and the appropriate frequency of surveillance studies (<https://merkelcell.org/prognosis/recur/>).

#### 11.5. Laboratory investigations

While Neuron-Specific Enolase serum levels failed to date to predict outcome for MCC patients [194], recent evidence suggests Neuron-Specific Enolase may be a potential useful biomarker in MCC as increasing levels correlated with progression while decreasing levels during immunotherapy correlated with response to immunotherapy [195]. Further studies are needed to confirm its utility during MCC follow-up. Currently, MCPyV oncoprotein antibody titre (tested at diagnostic and during follow up) is not a standard of care but should be further evaluated in prospective validation study [3,59,88,88–90].

#### 11.6. Time frames for clinical, imaging and laboratory examinations during follow up

MCC, being a rare skin cancer, large prospective and well-designed studies defining the best time intervals between clinical/laboratory/imaging visits during follow-up are lacking.

---

#### Recommendation 14

---

Follow-up	Consensus-based recommendation
GCP	<ul style="list-style-type: none"> <li>For primary tumours, without additional high-risk factors (Table 7). Regular clinical visits coupled with ultrasound of the scar of the primary, of the draining area and lymph nodes every 3–6 months for the first 3 years, followed by clinical visits every 12 months until 5 years</li> </ul>

No further laboratory examinations

Strength of consensus: 85%

---

In the light of missing standardised national and international post-treatment surveillance data for MCC, the

---

#### Recommendation 15

---

Follow-up	Consensus-based recommendation
GCP	<p>Stage III patients without immunosuppression and in good clinical condition *(Table 7).Clinical visits:</p> <ul style="list-style-type: none"> <li>- 3 monthly for 3 years,</li> <li>- Then every 6 months for years 4–5,</li> <li>- Then annually [192]</li> </ul>

#### Imaging:

Ultrasound of the scar of the primary, of the draining area and lymph nodes should be performed every 3 months in the first 3 years and every 6 months for the next 2 years.

FDGPET/CT whole-body (more sensitive) (if available) or contrast-enhanced neck/thorax/abdomen/pelvis CT and brain MRI or CT [87] can be performed every 3–6 months in the first 3 years, followed every 6–12 months for the next 2 years.

\* For frail patients and in stage IV, personalised protocol should be adopted.

Strength of consensus: 88%

---



---

#### Recommendation 16

---

Follow-up for immunosuppressed patients	Consensus-based recommendation
GCP	<ul style="list-style-type: none"> <li>Patients with immunosuppression (high-risk for second primary cancers) (Table 7).</li> </ul>

#### Clinical visits:

- 3 monthly for 3 years,
- then every 6 months [192] switch to annual clinical follow-up after 5 years if no subsequent cancers have occurred.

#### Imaging:

- Ultrasound of the scar of the primary, of the draining area and lymph nodes should be performed every 3 months in the first 3 years and every 6 months for the next 2 years.
- FDG PET/CT whole-body (more sensitive) (if available) or contrast-enhanced neck/thorax/abdomen/pelvis CT and brain MRI or CT [87] can be performed every 3–6 months in the first 3 years, followed every 6–12 months for the next 2 years.

Strength of consensus: 88%

---

frequency of visits should be individualised taking into account tumour-related and patient-related risk factors, institutional capacity and potential treatment options.

### Funding

None.

### Conflict of interest statement

The authors declare the following financial interests/personal relationships which may be considered as potential competing interests:

**Celeste Lebbe** reports AMGEN : Advisory Board, Advisory Role, Honoraria, Speaker's Bureau, Bristol-Myers Squibb : Advisory Board, Advisory Role, Funding, Honoraria, Speaker's Bureau, Travel, Accommodations, Expenses, Merck-Serono : Advisory Board, Advisory Role, MSD : Advisory Board, Advisory Role, Honoraria, Speaker's Bureau, Travel, Accommodations, Expenses, Novartis: Advisory Board, Advisory Role, Honoraria, Speaker's Bureau, Travel, Accommodations, Expenses, Pierre Fabre : Advisory Board, Advisory Role, Honoraria, Speaker's Bureau, Travel, Accommodations, Expenses

Roche : Advisory Board, Advisory Role, Funding, Honoraria, Speaker's Bureau,

Sanofi : Advisory Board, Advisory Role, Travel, Accommodations, Expenses

Incyte : Honoraria

Pfizer : Honoraria

**Marie-Léa Gauci** – no conflicts declared.

**Cynthia Aristei** – no conflicts declared

**J.C. Becker** reports receiving speaker's bureau honoraria from Amgen, Pfizer, Recordati and Sanofi, is a paid consultant/advisory board member/DSMB member for Almirall, Boehringer Ingelheim, InProTher, ICON, MerckSerono, Pfizer, 4SC, and Sanofi/Regeneron. His group receives research grants from Bristol-Myers Squibb, Merck Serono, HTG, IQVIA, and Alcedis.

Speaker's bureau honoraria from Amgen, Pfizer, Recordati and Sanofi; paid consultant/advisory/DSMB board member for Almirall, Boehringer Ingelheim, ICON, InProTher, MerckSerono, Pfizer, 4SC, and Sanofi/Regeneron. Research grants from Bristol-Myers Squibb, Merck Serono, HTG, IQVIA, and Alcedis.

**Astrid Blom** – no conflicts declared

**Veronique Bataille** – no conflicts declared

**Brigitte Dreno** reports Merck Serono: board member

**Veronique Del marmol** – no conflicts declared

**Ana Maria Forsea** – no conflicts declared

**Maria Concetta Fargnoli** – no conflicts declared

**Jean Jacques Grob** reports Advisor for Merck, Pfizer, Novartis, BMS, MSD, Roche, Pierre Fabre, Amgen, Sanofi, Philogen

**Fabio Gomes** – no conflicts declared

**Dr. Hauschild** reports grants and personal fees from Amgen, grants and personal fees from BMS, grants and personal fees from Eisai, grants and personal fees from Immunocore, grants and personal fees from MerckPfizer, grants and personal fees from MSD/Merck, grants and personal fees from Novartis Pharma, grants and personal fees from Philogen, grants and personal fees from Pierre Fabre, grants and personal fees from Regeneron, grants and personal fees from Replimune, grants and personal fees from Roche, grants and personal fees from Sanofi-Genzyme, grants and personal fees from Seagen outside the submitted work.

**Christoph Hoeller** reports grants and personal fees from Amgen, personal fees from Almirall, personal fees from BMS, personal fees from MSD, personal fees from Novartis, personal fees from Pierre Fabre, personal fees from Roche, personal fees from Sanofi, outside the submitted work

**Catherine Harwood** – no conflicts declared

**Dr. Kelleners-Smeets** reports institutional research grants (clinical trials) from Galderma and Will Pharma, advisory board and speakers' honoraria from Janssen-Cilag, Galderma, AbbVie, LeoPharma, Sun Pharmaceutical, Novartis and MSD outside the submitted work.

**Roland Kaufmann** – no conflicts declared

**Aimilios Lallas** – no conflicts declared

**J Malvey** –reports personal fees from Amgen, personal fees from MSD, grants and personal fees from Novartis, grants and personal fees from Almirall, grants and personal fees from BMS, personal fees from Philogen, grants and personal fees from Roche, grants from Sanofi, personal fees from Sunpharma, personal fees from Pierre Fabre, outside the submitted work.

**David Moreno-Ramirez** – no conflicts declared

**Ketty Peris** reports:

Almirall – personal fee – Advisory Board

Lilly – personal fee – Advisory Board

Galderma – personal fee – Advisory Board

Leo Pharma – personal fee – Advisory Board, Pierre Fabre – personal fee – Advisory Board

Novartis– personal fee – Advisory Board

Sanofi – personal fee – Advisory Board

Sun Pharma– personal fee – Advisory Board

**G Pellacani** – no conflicts declared

**Philippe Saiag** reports received consulting fees from Merck-Serono and MSD

**Dr. Stratigos** reports personal fees from Sanofi, personal fees from Janssen CILAG, personal fees and non-financial support from Novartis, grants from Genesis Pharma, grants from Abbvie, grants and personal fees from BMS, personal fees from Regeneron, grants from Leo-Pharma, grants from Lilly, outside the submitted work

**Ricardo Vieira** – no conflicts declared

**Iris Zalaudek** reports MSD, Novartis, Sunpharma, Sanofi Genzyme, Regeneron, Philogen

**Alex Van Akkooi** reports Advisory Board & Consultancy Honoraria: Amgen, Bristol-Myers Squibb, Novartis, MSD-Merck, Merck-Pfizer, Pierre Fabre, Sanofi, Sirius Medical, 4SC. All paid to institute and unrelated to current work.

Research grants: Amgen & Merck-Pfizer. All paid to institute and unrelated to current work.

**Paul Lorigan** – no conflicts declared

**Claus Garbe** reports:

Dr. Garbe reports personal fees from Amgen, personal fees from MSD, grants and personal fees from Novartis, grants and personal fees from NeraCare, grants and personal fees from BMS, personal fees from Philogen, grants and personal fees from Roche, grants and personal fees from Sanofi, outside the submitted work.

## Appendix A. Supplementary data

Supplementary data to this article can be found online at <https://doi.org/10.1016/j.ejca.2022.03.043>.

## References

- [1] Lebbe C, Becker JC, Grob J-J, Malvey J, del Marmol V, Pehamberger H, et al. Diagnosis and treatment of Merkel Cell Carcinoma. European consensus-based interdisciplinary guideline. *Eur J Cancer* 2015;51:2396–403. <https://doi.org/10.1016/j.ejca.2015.06.131>.
- [2] Becker JC, Eigentler T, Frerich B, Gambichler T, Grabbe S, Höller U, et al. S2k guidelines for Merkel cell carcinoma (MCC, neuroendocrine carcinoma of the skin) – update 2018. *JDDG - J Ger Soc Dermatol* 2019;17:562–76. <https://doi.org/10.1111/ddg.13841>.
- [3] Schmults Chrysalyn D, Blitzblau Rachel, Aasi Sumaira Z, Alam Murad, Andersen James S, Baumann Brian C, et al. Merkel Cell Carcinoma Version 1.2021. NCCN Guidel; 2021. <https://doi.org/10.1201/9781315120553>.
- [4] Brouwers MC, Kho ME, Browman GP, Burgers JS, Cluzeau F, Feder G, et al. AGREE II: Advancing guideline development, reporting and evaluation in health care. *CMAJ (Can Med Assoc J)* 2010;182. <https://doi.org/10.1503/cmaj.090449>.
- [5] OCEBM Table of Evidence Working Group = Jeremy Howick, Iain Chalmers (James Lind Library), Paul Glasziou, Greenhalgh Trish, Heneghan Carl, Alessandro Liberati IM, Phillips Bob, Hazel Thornton OG, et al., OCEBM Levels of Evidence Working Group\*. “The Oxford 2011 levels of evidence”. *Oxford Cent Evidence-Based Med* 2011;1:1–7.
- [6] Samimi M, Kervarrec T, Touze A. Immunobiology of Merkel cell carcinoma. *Curr Opin Oncol* 2020;32:114–21. <https://doi.org/10.1097/CCO.0000000000000608>.
- [7] Holterhues C, Vries E De, Louwman MW, Koljenović S, Nijsten T. Incidence and trends of cutaneous malignancies in The Netherlands, 1989-2005. *J Invest Dermatol* 2010;130:1807–12. <https://doi.org/10.1038/jid.2010.58>.
- [8] Eisemann N, Waldmann A, Geller AC, Weinstock MA, Volkmer B, Greinert R, et al. Non-melanoma skin cancer incidence and impact of skin cancer screening on incidence. *J Invest Dermatol* 2014;134:43–50. <https://doi.org/10.1038/jid.2013.304>.
- [9] Garbutcheon-Singh KB, Curchin DJ, McCormack CJ, Smith SD. Trends in the incidence of Merkel cell carcinoma in Victoria, Australia, between 1986 and 2016. *Australas J Dermatol* 2020;61:e34–8. <https://doi.org/10.1111/ajd.13131>.
- [10] Youlden DR, Soyer HP, Youl PH, Fritschi L, Baade PD. Incidence and survival for Merkel cell carcinoma in Queensland, Australia, 1993-2010. *JAMA Dermatol* 2014;150:864–72. <https://doi.org/10.1001/jamadermatol.2014.124>.
- [11] Girschik J, Thorn K, Beer TW, Heenan PJ, Fritschi L. Merkel cell carcinoma in Western Australia: a population-based study of incidence and survival. *Br J Dermatol* 2011;165:1051–7. <https://doi.org/10.1111/j.1365-2133.2011.10493.x>.
- [12] Robertson JP, Liang ES, Martin RCW. Epidemiology of Merkel cell carcinoma in New Zealand: a population-based study. *Br J Dermatol* 2015;173:835–7. <https://doi.org/10.1111/bjd.13782>.
- [13] Lee Y, Chao P, Coomarasamy C, Mathy JA. Epidemiology and survival of Merkel cell carcinoma in New Zealand: a population-based study between 2000 and 2015 with international comparison. *Australas J Dermatol* 2019;60:e284–91. <https://doi.org/10.1111/ajd.13023>.
- [14] Jacobs D, Huang H, Olino K, Weiss S, Kluger H, Judson BL, et al. Assessment of age, period, and birth cohort effects and trends in merkel cell carcinoma incidence in the United States. *JAMA Dermatology* 2020;1–7. <https://doi.org/10.1001/jamadermatol.2020.4102>. 06510.
- [15] Paulson KG, Park SY, Vandeven NA, Lachance K, Thomas H, Chapuis AG, et al. Merkel cell carcinoma: current US incidence and projected increases based on changing demographics. *J Am Acad Dermatol* 2018;78:457–63. <https://doi.org/10.1016/j.jaad.2017.10.028>. e2.
- [16] Fitzgerald TL, Dennis S, Kachare SD, Vohra NA, Wong JH, Zervos EE. Dramatic increase in the incidence and mortality from Merkel cell carcinoma in the United States. *Am Surg* 2015; 81:802–6. <https://doi.org/10.1177/000313481508100819>.
- [17] Fondain M, Dereure O, Uhry Z, Guizard AV, Woronoff AS, Colonna M, et al. Merkel cell carcinoma in France: a registries-based, comprehensive epidemiological survey. *J Eur Acad Dermatol Venereol* 2018;32:1292–6. <https://doi.org/10.1111/jdv.14798>.
- [18] Rubió-Casadevall J, Hernandez-Pujol AM, Ferreira-Santos MC, Morey-Esteve G, Vilardell L, Osca-Gelis G, et al. Trends in incidence and survival analysis in non-melanoma skin cancer from 1994 to 2012 in Girona, Spain: a population-based study. *Cancer Epidemiol* 2016;45:6–10. <https://doi.org/10.1016/j.canep.2016.09.001>.
- [19] Samuel RJ, Matthews AG, Holme SA. Merkel cell carcinoma in Scotland 2000-10. *Br J Dermatol* 2015;173:1073–5. <https://doi.org/10.1111/bjd.13869>.
- [20] Reichgelt BA, Visser O. Epidemiology and survival of Merkel cell carcinoma in The Netherlands. A population-based study of 808 cases in 1993-2007. *Eur J Cancer* 2011;47:579–85. <https://doi.org/10.1016/j.ejca.2010.11.002>.
- [21] Zaar O, Gillstedt M, Lindelöf B, Wennberg-Larkö AM, Paoli J. Merkel cell carcinoma incidence is increasing in Sweden. *J Eur Acad Dermatol Venereol* 2016;30:1708–13. <https://doi.org/10.1111/jdv.13698>.
- [22] Kukko H, Böhling T, Koljonen V, Tukiainen E, Haglund C, Pikhrel A, et al. Merkel cell carcinoma - a population-based epidemiological study in Finland with a clinical series of 181 cases. *Eur J Cancer* 2012;48:737–42. <https://doi.org/10.1016/j.ejca.2011.06.001>.
- [23] Kieny A, Cribier B, Meyer N, Velten M, Jégu J, Lipsker D. Epidemiology of Merkel cell carcinoma. A population-based study from 1985 to 2013, in northeastern of France. *Int J Cancer* 2019;144:741–5. <https://doi.org/10.1002/ijc.31860>.
- [24] Goon PKC, Greenberg DC, Igal L, Levell NJ. Merkel cell carcinoma: rising incidence in the east of England. *J Eur Acad Dermatol Venereol* 2016;30:2052. <https://doi.org/10.1111/jdv.13828>. –5.



- [25] Lyhne D, Lock-Andersen J, Dahlström K, Drzewiecki KT, Balslev E, Muhic A, et al. Rising incidence of Merkel cell carcinoma. *J Plast Surg Hand Surg* 2011;45:274–80. <https://doi.org/10.3109/2000656X.2011.613233>.
- [26] Freeman MBB, Holman DM, Qin J, Lunsford NB. Merkel cell carcinoma incidence, trends, and survival rates among adults aged  $\geq 50$  years from United States Cancer Statistics. *J Am Acad Dermatol* 2019;80:1154–6. <https://doi.org/10.1016/j.jaad.2018.10.045>.
- [27] Harms KL, Healy MA, Nghiem P, Sober AJ, Johnson TM, Bichakjian CK, et al. Analysis of prognostic factors from 9387 merkel cell carcinoma cases forms the basis for the new 8th edition AJCC staging system. *Ann Surg Oncol* 2016;23:3564–71. <https://doi.org/10.1245/s10434-016-5266-4>.
- [28] Stang A, Becker JC, Nghiem P, Ferlay J. The association between geographic location and incidence of Merkel cell carcinoma in comparison to melanoma: an international assessment. *Eur J Cancer* 2018;94:47–60. <https://doi.org/10.1016/j.ejca.2018.02.003>.
- [29] Agelli M, Clegg LX. Epidemiology of primary Merkel cell carcinoma in the United States. *J Am Acad Dermatol* 2003;49:832–41. [https://doi.org/10.1016/S0190-9622\(03\)02108-X](https://doi.org/10.1016/S0190-9622(03)02108-X).
- [30] Lunder EJ, Stern RS. Merkel-cell carcinomas in patients treated with methoxsalen and ultraviolet A radiation. *N Engl J Med* 1998;339:1247–8. <https://doi.org/10.1056/NEJM199810223391715>.
- [31] Albores-Saavedra J, Batich K, Chable-Montero F, Sagy N, Schwartz AM, Henson DE. Merkel cell carcinoma demographics, morphology, and survival based on 3870 cases: a population based study. *J Cutan Pathol* 2010;37:20–7. <https://doi.org/10.1111/j.1600-0560.2009.01370.x>.
- [32] Asgari MM, Sokil MM, Warton EM, Iyer J, Paulson KG, Nghiem P. Effect of host, tumor, diagnostic, and treatment variables on outcomes in a large cohort with Merkel cell carcinoma. *JAMA Dermatology* 2014;150:716–23. <https://doi.org/10.1001/jamadermatol.2013.8116>.
- [33] Tadmor T, Liphshitz I, Aviv A, Landgren O, Barchana M, Polliack A. Increased incidence of chronic lymphocytic leukaemia and lymphomas in patients with Merkel cell carcinoma - a population based study of 335 cases with neuroendocrine skin tumor. *Br J Haematol* 2012;157:457–62. <https://doi.org/10.1111/j.1365-2141.2012.09087.x>.
- [34] Howard RA, Dores GM, Curtis RE, Anderson WF, Travis LB. Merkel cell carcinoma and multiple primary cancers. *Cancer Epidemiol Biomarkers Prev* 2006;15:1545–9. <https://doi.org/10.1158/1055-9965.EPI-05-0895>.
- [35] Brewer JD, Shanafelt TD, Otle CC, Roenigk RK, Cerhan JR, Kay NE, et al. Chronic lymphocytic leukemia is associated with decreased survival of patients with malignant melanoma and merkel cell carcinoma in a SEER population-based study. *J Clin Oncol* 2012;30:843–9. <https://doi.org/10.1200/JCO.2011.34.9605>.
- [36] Lanoy E, Dores GM, Madeleine MM, Toro JR, Fraumeni JF, Engels EA. Epidemiology of nonkeratinocytic skin cancers among persons with AIDS in the United States. *Aids* 2009;23:385–93. <https://doi.org/10.1097/QAD.0b013e3283213046>.
- [37] Lanoy E, Costagliola D, Engels EA. Skin cancers associated with HIV infection and solid-organ transplantation among elderly adults. *Int J Cancer* 2010;126(7):1724–31. <https://doi.org/10.1002/ijc.24931>. NA-NA.
- [38] Clarke CA, Robbins HA, Tatalovich Z, Lynch CF, Pawlish KS, Finch JL, et al. Risk of Merkel cell carcinoma after solid organ transplantation. *J Natl Cancer Inst* 2015;107:1–9. <https://doi.org/10.1093/jnci/dju382>.
- [39] Keeling E, Murray SL, Williams Y, Sexton DJ, O'Kelly P, Deady S, et al. Merkel cell carcinoma in kidney transplant recipients in Ireland 1964–2018. *Br J Dermatol* 2019;181:1314–5. <https://doi.org/10.1111/bjd.18218>.
- [40] Starrett GJ, Thakuria M, Chen T, Marcelus C, Cheng J, Nomburg J, et al. Clinical and molecular characterization of virus-positive and virus-negative Merkel cell carcinoma. *Genome Med* 2020;12:30. <https://doi.org/10.1186/s13073-020-00727-4>.
- [41] Von Der Grün J, Winkelmann R, Meissner M, Wieland U, Silling S, Martin D, et al. Merkel cell polyoma viral load and intratumoral CD8+ lymphocyte infiltration predict overall survival in patients with Merkel cell carcinoma. *Front Oncol* 2019;9:1–8. <https://doi.org/10.3389/fonc.2019.00020>.
- [42] Moshiri AS, Doumani R, Yelistratova L, Blom A, Lachance K, Shinohara MM, et al. Polyomavirus-negative merkel cell carcinoma: a more aggressive subtype based on analysis of 282 cases using multimodal tumor virus detection. *J Invest Dermatol* 2017;137:819–27. <https://doi.org/10.1016/j.jid.2016.10.028>.
- [43] Ricci C, Righi A, Ambrosi F, Gibertoni D, Maletta F, Uccella S, et al. Prognostic impact of MCPyV and TIL subtyping in merkel cell carcinoma: evidence from a large European cohort of 95 patients. *Endocr Pathol* 2020;31:21–32. <https://doi.org/10.1007/s12022-019-09601-5>.
- [44] Tam M, Luu M, Barker CA, Gharavi NM, Hamid O, Shiao SL, et al. Improved survival in women versus men with Merkel cell carcinoma. *J Am Acad Dermatol* 2020:1–9. <https://doi.org/10.1016/j.jaad.2020.02.034>.
- [45] DeCaprio JA. Merkel cell polyomavirus and Merkel cell carcinoma. *Philos Trans R Soc B Biol Sci* 2017;372:20160276. <https://doi.org/10.1098/rstb.2016.0276>.
- [46] Verhaegen ME, Mangelberger D, Harms PW, Vozheiko TD, Weick JW, Wilbert DM, et al. Merkel cell polyomavirus small T antigen is oncogenic in transgenic mice. *J Invest Dermatol* 2015;135:1415–24. <https://doi.org/10.1038/jid.2014.446>.
- [47] DeCaprio JA. Molecular pathogenesis of merkel cell carcinoma. *Annu Rev Pathol* 2021;16:2129251630. <https://doi.org/10.1146/annurev-pathmechdis-012419-032817>.
- [48] Pietropaolo V, Prezioso C, Moens U. Merkel cell polyomavirus and merkel cell carcinoma. *Cancers* 2020;12:1774. <https://doi.org/10.3390/cancers12071774>.
- [49] Kervarrec T, Samimi M, Guyétant S, Sarma B, Chéret J, Blanchard E, et al. Histogenesis of Merkel cell carcinoma: a comprehensive review. *Front Oncol* 2019;9:1–13. <https://doi.org/10.3389/fonc.2019.00451>.
- [50] Heath M, Jaimes N, Lemos B, Mostaghimi A, Wang LC, Peñas PF, et al. Clinical characteristics of Merkel cell carcinoma at diagnosis in 195 patients: the AEIOU features. *J Am Acad Dermatol* 2008;58:375–81. <https://doi.org/10.1016/j.jaad.2007.11.020>.
- [51] Islam MN, Chehal H, Smith MH, Islam S, Bhattacharyya I. Merkel cell carcinoma of the buccal mucosa and lower lip. *Head Neck Pathol* 2018;12:279–85. <https://doi.org/10.1007/s12105-017-0859-1>.
- [52] Emge DA, Cardones AR. Updates on merkel cell carcinoma. *Dermatol Clin* 2019;37:489–503. <https://doi.org/10.1016/j.det.2019.06.002>.
- [53] Cogshall K, Tello TL, North JP, Yu SS. Merkel cell carcinoma: an update and review. *J Am Acad Dermatol* 2018;78:433–42. <https://doi.org/10.1016/j.jaad.2017.12.001>.
- [54] Jour G, Aung PP, Rozas-Muñoz E, Curry JL, Prieto V, Ivan D. Intraepidermal Merkel cell carcinoma: a case series of a rare entity with clinical follow up. *J Cutan Pathol* 2017;44:684–91. <https://doi.org/10.1111/cup.12966>.
- [55] Navarrete-Dechent C, Cordova M, Aleissa S, Battle LR, Ganly I, Pulitzer M, et al. Dermoscopy and reflectance confocal microscopy of intraepidermal Merkel cell carcinoma. *Australas J Dermatol* 2020;62(2):238–41. <https://doi.org/10.1111/ajd.13513>. ajd.13513.
- [56] Dalle S, Parmentier L, Moscarella E, Phan A, Argenziano G, Thomas L. Dermoscopy of merkel cell carcinoma. *Dermatology* 2012;224:140–4. <https://doi.org/10.1159/000337411>.
- [57] Lallas A, Moscarella E, Argenziano G, Longo C, Apalla Z, Ferrara G, et al. Dermoscopy of uncommon skin tumors. *Australas J Dermatol* 2014;55:53–62. <https://doi.org/10.1111/ajd.12074>.

- [58] Jalilian C, Chamberlain AJ, Haskett M, Rosendahl C, Goh M, Beck H, et al. Clinical and dermoscopic characteristics of Merkel cell carcinoma. *Br J Dermatol* 2013;169:294–7. <https://doi.org/10.1111/bjd.12376>.
- [59] Becker JC, Stang A, DeCaprio JA, Cerroni L, Lebbé C, Veness M, et al. Merkel cell carcinoma. *Nat Rev Dis Prim* 2017;3:17077. <https://doi.org/10.1038/nrdp.2017.77>.
- [60] Tello TL, Coggshall K, Yom SS, Yu SS. Merkel cell carcinoma: an update and review: current and future therapy. *J Am Acad Dermatol* 2018;78:445–54. <https://doi.org/10.1016/j.jaad.2017.12.004>.
- [61] Pasternak S, Carter MD, Ly TY, Doucette S, Walsh NM. Immunohistochemical profiles of different subsets of Merkel cell carcinoma. *Hum Pathol* 2018;82:232–8. <https://doi.org/10.1016/j.humpath.2018.07.022>.
- [62] Kervarrec T, Tallet A, Miquelstorena-Standley E, Houben R, Schrama D, Gambichler T, et al. Diagnostic accuracy of a panel of immunohistochemical and molecular markers to distinguish Merkel cell carcinoma from other neuroendocrine carcinomas. *Mod Pathol* 2019;32:499–510. <https://doi.org/10.1038/s41379-018-0155-y>.
- [63] AJCC Cancer staging manual. 8th ed.. In: Amin MB, Edge, S., Greene, F., Byrd, D.R., Brookland, R.K., Washington, M.K., Gershenwald, J.E., Compton, C.C., Hess, K.R., Sullivan, D.C., Jessup, J.M., Brierley, J.D., Gaspar, L.E., Schilsky, R.L., Balch, n.d.
- [64] Björn Andtback H, Björnhagen-Säfwenberg V, Shi H, Lui W-O, Masucci GV, Villabona L. Sex differences in overall survival and the effect of radiotherapy in merkel cell carcinoma—a retrospective analysis of A Swedish cohort. *Cancers* 2021;13:265. <https://doi.org/10.3390/cancers13020265>.
- [65] Yusuf MB, Gaskins J, Wall W, Tennant P, Bumpous J, Dunlap N. Immune status and the efficacy of radiotherapy on overall survival for patients with localized Merkel cell carcinoma: an analysis of the National Cancer Database. *J Med Imaging Radiat Oncol* 2020;64:435–43. <https://doi.org/10.1111/1754-9485.13039>.
- [66] Bleicher J, Asare EA, Flores S, Bowles TL, Bowen GM, Hynstrom JR. Oncologic outcomes of patients with Merkel Cell Carcinoma (MCC): a multi-institutional cohort study. *Am J Surg* 2020;221(4):844–9. <https://doi.org/10.1016/j.amjsurg.2020.08.013>.
- [67] Smith VA, Camp ER, Lentsch EJ. Merkel cell carcinoma: Identification of prognostic factors unique to tumors located in the head and neck based on analysis of SEER data. *Laryngoscope* 2012;122:1283–90. <https://doi.org/10.1002/lary.23222>.
- [68] Iyer JG, Storer BE, Paulson KG, Lemos B, Phillips JL, Bichakjian CK, et al. Relationships among primary tumor size, number of involved nodes, and survival for 8044 cases of Merkel cell carcinoma. *J Am Acad Dermatol* 2014;70:637–43. <https://doi.org/10.1016/j.jaad.2013.11.031>.
- [69] Lim CS, Whalley D, Haydu LE, Murali R, Tippett J, Thompson JF, et al. Increasing tumor thickness is associated with recurrence and poorer survival in patients with merkel cell carcinoma. *Ann Surg Oncol* 2012;19:3325–34. <https://doi.org/10.1245/s10434-012-2509-x>.
- [70] Smith FO, Yue B, Marzban SS, Walls BL, Carr M, Jackson RS, et al. Both tumor depth and diameter are predictive of sentinel lymph node status and survival in Merkel cell carcinoma. *Cancer* 2015;121:3252–60. <https://doi.org/10.1002/ncr.29452>.
- [71] Fields RC, Busam KJ, Chou JF, Panageas KS, Pulitzer MP, Allen PJ, et al. Five hundred patients with merkel cell carcinoma evaluated at a single institution. *Ann Surg* 2011;254:465–75. <https://doi.org/10.1097/SLA.0b013e31822c5fc1>.
- [72] Sihto H, Böhling T, Kavola H, Koljonen V, Salmi M, Jalkanen S, et al. Tumor infiltrating immune cells and outcome of merkel cell carcinoma: a population-based study. *Clin Cancer Res* 2012;18:2872–81. <https://doi.org/10.1158/1078-0432.CCR-11-3020>.
- [73] Feldmeyer L, Hudgens CW, Ray-Lyons G, Nagarajan P, Aung PP, Curry JL, et al. Density, distribution, and composition of immune infiltrates correlate with survival in Merkel cell carcinoma. *Clin Cancer Res* 2016;22:5553–63. <https://doi.org/10.1158/1078-0432.CCR-16-0392>.
- [74] Harms KL, Zhao L, Johnson B, Wang X, Carskadon S, Palanisamy N, et al. Virus-positive merkel cell carcinoma is an independent prognostic group with distinct predictive biomarkers. *Clin Cancer Res* 2021;27(9):2494–504. <https://doi.org/10.1158/1078-0432.CCR-20-0864>.
- [75] González-Vela M del C, Curiel-Olmo S, Derdak S, Beltran S, Santibañez M, Martínez N, et al. Shared oncogenic pathways implicated in both virus-positive and UV-induced merkel cell carcinomas. *J Invest Dermatol* 2017;137:197–206. <https://doi.org/10.1016/j.jid.2016.08.015>.
- [76] Farley CR, Perez MC, Soelling SJ, Delman KA, Harit A, Wuthrick EJ, et al. Merkel cell carcinoma outcomes: does AJCC8 underestimate survival? *Ann Surg Oncol* 2020;27. <https://doi.org/10.1245/s10434-019-08187-w>. 1978–85.
- [77] Gupta SG, Wang LC, Peñas PF, Gellenthin M, Lee SJ, Nghiem P. Sentinel lymph node biopsy for evaluation and treatment of patients with merkel cell carcinoma. *Arch Dermatol* 2006;142. <https://doi.org/10.1001/archderm.142.6.685>.
- [78] Lemos BD, Storer BE, Iyer JG, Phillips JL, Bichakjian CK, Fang LC, et al. Pathologic nodal evaluation improves prognostic accuracy in Merkel cell carcinoma: analysis of 5823 cases as the basis of the first consensus staging system. *J Am Acad Dermatol* 2010;63:751–61. <https://doi.org/10.1016/j.jaad.2010.02.056>.
- [79] Gunaratne DA, Howle JR, Veness MJ. Sentinel lymph node biopsy in Merkel cell carcinoma: a 15-year institutional experience and statistical analysis of 721 reported cases. *Br J Dermatol* 2016;174:273–81. <https://doi.org/10.1111/bjd.14240>.
- [80] Nguyen AT, Luu M, Lu DJ, Hamid O, Mallen-St, Clair J, et al. Quantitative metastatic lymph node burden and survival in Merkel cell carcinoma. *J Am Acad Dermatol* 2021;84:312–20. <https://doi.org/10.1016/j.jaad.2019.12.072>.
- [81] Song Y, Azari FS, Tang R, Shannon AB, Miura JT, Fraker DL, et al. Patterns of metastasis in merkel cell carcinoma. *Ann Surg Oncol* 2021;28:519–29. <https://doi.org/10.1245/s10434-020-08587-3>.
- [82] Xia Y, Cao D, Zhao J, Zhu B, Xie J. Clinical features and prognosis of merkel cell carcinoma in elderly patients. *Med Sci Mon Int Med J Exp Clin Res* 2020;26. <https://doi.org/10.12659/MSM.924570>.
- [83] Singh N, Alexander NA, Lachance K, Lewis CW, McEvoy A, Akaike G, et al. Clinical benefit of baseline imaging in merkel cell carcinoma: analysis of 584 patients. *J Am Acad Dermatol* 2020;84(2):330–9. <https://doi.org/10.1016/j.jaad.2020.07.065>.
- [84] Taralli S, Sollini M, Milella M, Perotti G, Filice A, Menga M, et al. 18F-FDG and 68Ga-somatostatin analogs PET/CT in patients with Merkel cell carcinoma: a comparison study. *EJNMMI Res* 2018;8. <https://doi.org/10.1186/s13550-018-0423-3>.
- [85] Buder K, Lapa C, Kreissl MC, Schirbel A, Herrmann K, Schnack A, et al. Somatostatin receptor expression in Merkel cell carcinoma as target for molecular imaging. *BMC Cancer* 2014;14:1–8. <https://doi.org/10.1186/1471-2407-14-268>.
- [86] Akaike T, Qazi J, Anderson A, Behnia FS, Shinohara MM, Akaike G, et al. High somatostatin receptor expression and efficacy of somatostatin analogues in patients with metastatic Merkel cell carcinoma. *Br J Dermatol* 2020. <https://doi.org/10.1111/bjd.19150>. 0–3.
- [87] Lewis CW, Qazi J, Hippe DS, Lachance K, Thomas H, Cook MM, et al. Patterns of distant metastases in 215 Merkel cell carcinoma patients: Implications for prognosis and

- surveillance. *Cancer Med* 2020;9:1374–82. <https://doi.org/10.102/cam4.2781>.
- [88] Paulson KG, Lewis CW, Redman MW, Simonson WT, Lisberg A, Ritter D, et al. Viral oncoprotein antibodies as a marker for recurrence of Merkel cell carcinoma: a prospective validation study. *Cancer* 2017;123:1464–74. <https://doi.org/10.1002/cncr.30475>.
- [89] Paulson KG, Carter JJ, Johnson LG, Cahill KW, Iyer JG, Schrama D, et al. Antibodies to Merkel cell polyomavirus T antigen oncoproteins reflect tumor burden in Merkel cell carcinoma patients. *Cancer Res* 2010;70:8388–97. <https://doi.org/10.1158/0008-5472.CAN-10-2128>.
- [90] Samimi M, Molet L, Fleury M, Laude H, Carloti A, Gardair C, et al. Prognostic value of antibodies to Merkel cell polyomavirus T antigens and VP1 protein in patients with Merkel cell carcinoma. *Br J Dermatol* 2016;174:813–22. <https://doi.org/10.1111/bjd.14313>.
- [91] Yan L, Sun L, Guan Z, Wei S, Wang Y, Li P. Analysis of cutaneous Merkel cell carcinoma outcomes after different surgical interventions. *J Am Acad Dermatol* 2020;82:1422–34. <https://doi.org/10.1016/j.jaad.2018.10.001>.
- [92] Andruska N, Fischer-Valuck BW, Mahapatra L, Brenneman RJ, Gay HA, Thorstad WL, et al. Association between surgical margins larger than 1 cm and overall survival in patients with merkel cell carcinoma. *JAMA Dermatology* 2021; 157:540–8. <https://doi.org/10.1001/jamadermatol.2021.0247>.
- [93] Senchenkov A, Barnes SA, Moran SL. Predictors of survival and recurrence in the surgical treatment of Merkel cell carcinoma of the extremities. *J Surg Oncol* 2007;95:229–34. <https://doi.org/10.1002/jso.20647>.
- [94] Shaikh WR, Sobanko JF, Etkorn JR, Shin TM, Miller CJ. Utilization patterns and survival outcomes after wide local excision or Mohs micrographic surgery for Merkel cell carcinoma in the United States, 2004–2009. *J Am Acad Dermatol* 2018;78:175–7. <https://doi.org/10.1016/j.jaad.2017.09.049>. e3.
- [95] Singh B, Qureshi MM, Truong MT, Sahni D. Demographics and outcomes of stage I and II Merkel cell carcinoma treated with Mohs micrographic surgery compared with wide local excision in the National Cancer Database. *J Am Acad Dermatol* 2018;79:126–34. <https://doi.org/10.1016/j.jaad.2018.01.041>. e3.
- [96] Su C, Bai HX, Christensen S. Relative survival analysis in patients with stage I-II Merkel cell carcinoma treated with Mohs micrographic surgery or wide local excision. *J Am Acad Dermatol* 2018. <https://doi.org/10.1016/j.jaad.2018.04.057>. In press.
- [97] Tarantola TI, Vallow LA, Halyard MY, Weenig RH, Warschaw KE, Grotz TE, et al. Prognostic factors in Merkel cell carcinoma: analysis of 240 cases. *J Am Acad Dermatol* 2013;68: 425–32. <https://doi.org/10.1016/j.jaad.2012.09.036>.
- [98] Tarabackar ES, Fu T, Lachance K, Hippe DS, Pulliam T, Thomas H, et al. Narrow excision margins are appropriate for Merkel cell carcinoma when combined with adjuvant radiation: analysis of 188 cases of localized disease and proposed management algorithm. *J Am Acad Dermatol* 2021;84:340–7. <https://doi.org/10.1016/j.jaad.2020.07.079>.
- [99] Harrington C, Kwan W. Radiotherapy and conservative surgery in the locoregional management of merkel cell carcinoma: the British columbia cancer agency experience. *Ann Surg Oncol* 2016;23:573–8. <https://doi.org/10.1245/s10434-015-4812-9>.
- [100] Jaouen F, Kerverrec T, Caille A, Le Corre Y, Dreno B, Esteve E, et al. Narrow resection margins are not associated with mortality or recurrence in patients with Merkel cell carcinoma: a retrospective study. *J Am Acad Dermatol* 2020;84(4):921–9. <https://doi.org/10.1016/j.jaad.2020.11.038>.
- [101] Perez MC, de Pinho FR, Holstein A, Oliver DE, Naqvi SMH, Kim Y, et al. Resection margins in merkel cell carcinoma: is a 1-cm margin wide enough? *Ann Surg Oncol* 2018;25:3334–40. <https://doi.org/10.1245/s10434-018-6688-y>.
- [102] Allen PJ, Bowne WB, Jaques DP, Brennan MF, Busam K, Coit DG. Merkel cell carcinoma: prognosis and treatment of patients from a single institution. *J Clin Oncol* 2005;23:2300–9. <https://doi.org/10.1200/JCO.2005.02.329>.
- [103] Sattler E, Geimer T, Sick I, Flaig MJ, Ruzicka T, Berking C, et al. Sentinel lymph node in Merkel cell carcinoma: to biopsy or not to biopsy? *J Dermatol* 2013;40:374–9. <https://doi.org/10.1111/1346-8138.12072>.
- [104] Conic RRZ, Ko J, Saridakis S, Damiani G, Funchain P, Vidimos A, et al. Sentinel lymph node biopsy in Merkel cell carcinoma: predictors of sentinel lymph node positivity and association with overall survival. *J Am Acad Dermatol* 2019;81: 364–72. <https://doi.org/10.1016/j.jaad.2019.03.027>.
- [105] Kachare SD, Wong JH, Vohra NA, Zervos EE, Fitzgerald TL. Sentinel lymph node biopsy is associated with improved survival in merkel cell carcinoma. *Ann Surg Oncol* 2014;21:1624–30. <https://doi.org/10.1245/s10434-013-3434-3>.
- [106] Sridharan V, Muralidhar V, Margalit DN, Tishler RB, DeCaprio JA, Thakuria M, et al. Merkel cell carcinoma: a population analysis on survival. *J Natl Compr Cancer Netw* 2016;14:1247–57. <https://doi.org/10.6004/jnccn.2016.0134>.
- [107] Fields RC, Busam KJ, Chou JF, Panageas KS, Pulitzer MP, Kraus DH, et al. Recurrence and survival in patients undergoing sentinel lymph node biopsy for merkel cell carcinoma: analysis of 153 patients from a single institution. *Ann Surg Oncol* 2011;18: 2529–37. <https://doi.org/10.1245/s10434-011-1662-y>.
- [108] Sims JR, Grotz TE, Pockaj BA, Joseph RW, Foote RL, Otley CC, et al. Sentinel lymph node biopsy in Merkel cell carcinoma: the Mayo Clinic experience of 150 patients. *Surg Oncol* 2018;27:11–7. <https://doi.org/10.1016/j.suronc.2017.10.005>.
- [109] Servy A, Maubec E, Sugier PE, Grange F, Mansard S, Lesimple T, et al. Merkel cell carcinoma: value of sentinel lymph-node status and adjuvant radiation therapy. *Ann Oncol* 2016;27:914–9. <https://doi.org/10.1093/annonc/mdw035>.
- [110] Sadeghi R, Adinehpour Z, Maleki M, Fallahi B, Giovannella L, Treglia G. Prognostic significance of sentinel lymph node mapping in merkel cell carcinoma: systematic review and meta-analysis of prognostic studies. *Biomed Res Int* 2014;2014:1–9. <https://doi.org/10.1155/2014/489536>.
- [111] Lee JS, Durham AB, Bichakjian CK, Harms PW, Hayman JA, McLean SA, et al. Completion lymph node dissection or radiation therapy for sentinel node metastasis in merkel cell carcinoma. *Ann Surg Oncol* 2019;26:386–94. <https://doi.org/10.1245/s10434-018-7072-7>.
- [112] Cramer JD, Suresh K, Sridharan S. Completion lymph node dissection for Merkel cell carcinoma. *Am J Surg* 2020;220: 982–6. <https://doi.org/10.1016/j.amjsurg.2020.02.018>.
- [113] Perez MC, Oliver DE, Weitman ES, Boulware D, Messina JL, Torres-Roca J, et al. Management of sentinel lymph node metastasis in merkel cell carcinoma: completion lymphadenectomy, radiation, or both? *Ann Surg Oncol* 2019;26:379–85. <https://doi.org/10.1245/s10434-018-6810-1>.
- [114] Leonard JH, Ramsay JR, Kearsley JH, Birrell GW. Radiation sensitivity of Merkel cell carcinoma cell lines. *Int J Radiat Oncol* 1995;32:1401–7. [https://doi.org/10.1016/0360-3016\(94\)00610-W](https://doi.org/10.1016/0360-3016(94)00610-W).
- [115] Ghadjar P, Kaanders JH, Poortmans P, Zaucha R, Krenghl M, Lagrange JL, et al. The essential role of radiotherapy in the treatment of merkel cell carcinoma: a study from the rare cancer Network. *Int J Radiat Oncol* 2011;81:e583–91. <https://doi.org/10.1016/j.ijrobp.2011.05.028>.
- [116] Kang SH, Haydu LE, Goh RY, Fogarty GB. Radiotherapy is associated with significant improvement in local and regional control in Merkel cell carcinoma. *Radiat Oncol* 2012;7:171. <https://doi.org/10.1186/1748-717X-7-171>.
- [117] Strom T, Carr M, Zager JS, Naghavi A, Smith FO, Cruse CW, et al. Radiation therapy is associated with improved outcomes in merkel cell carcinoma. *Ann Surg Oncol* 2016;23:3572–8. <https://doi.org/10.1245/s10434-016-5293-1>.



- [118] Bhatia S, Storer BE, Iyer JG, Moshiri A, Parvathaneni U, Byrd D, et al. Adjuvant radiation therapy and chemotherapy in merkel cell carcinoma: survival analyses of 6908 cases from the national cancer data base. *J Natl Cancer Inst* 2016;108:djw042. <https://doi.org/10.1093/jnci/djw042>.
- [119] Mojica P, Smith D, Ellenhorn JDI. Adjuvant radiation therapy is associated with improved survival in merkel cell carcinoma of the skin. *J Clin Oncol* 2007;25:1043–7. <https://doi.org/10.1200/JCO.2006.07.9319>.
- [120] van Veenendaal LM, van Akkooi ACJ, Verhoef C, Grünhagen DJ, Klop WMC, Valk GD, et al. Merkel cell carcinoma: clinical outcome and prognostic factors in 351 patients. *J Surg Oncol* 2018;117:1768–75. <https://doi.org/10.1002/jso.25090>.
- [121] Takagishi SR, Marx TE, Lewis C, Tarabdkar ES, Juhlin ID, Blom A, et al. Postoperative radiation therapy is associated with a reduced risk of local recurrence among low risk Merkel cell carcinomas of the head and neck. *Adv Radiat Oncol* 2016;1:244–51. <https://doi.org/10.1016/j.adro.2016.10.003>.
- [122] Petrelli F, Ghidini A, Torchio M, Prinzi N, Trevisan F, Dallera P, et al. Adjuvant radiotherapy for Merkel cell carcinoma: a systematic review and meta-analysis. *Radiation Oncol* 2019;134:211–9. <https://doi.org/10.1016/j.radonc.2019.02.015>.
- [123] Jouary T, Leyral C, Dreno B, Doussau A, Sassolas B, Beylot-Barry M, et al. Adjuvant prophylactic regional radiotherapy versus observation in stage I Merkel cell carcinoma: a multicentric prospective randomized study. *Ann Oncol* 2012;23:1074–80. <https://doi.org/10.1093/annonc/mdr318>.
- [124] Hui AC, Stillie AL, Seel M, Ainslie J. Merkel cell carcinoma: 27-year experience at the peter MacCallum cancer Centre. *Int J Radiat Oncol* 2011;80:1430–5. <https://doi.org/10.1016/j.ijrobp.2010.04.061>.
- [125] Strom T, Naghavi AO, Messina JL, Kim S, Torres-Roca JF, Russell J, et al. Improved local and regional control with radiotherapy for Merkel cell carcinoma of the head and neck. *Head Neck* 2017;39:48–55. <https://doi.org/10.1002/hed.24527>.
- [126] Fang LC, Lemos B, Douglas J, Iyer J, Nghiem P. Radiation monotherapy as regional treatment for lymph node-positive Merkel cell carcinoma. *Cancer* 2010;116:1783–90. <https://doi.org/10.1002/cncr.24919>.
- [127] Patel SA, Qureshi MM, Sahni D, Truong MT. Identifying an optimal adjuvant radiotherapy dose for extremity and trunk merkel cell carcinoma following resection. *JAMA Dermatology* 2017;153:1007. <https://doi.org/10.1001/jamadermatol.2017.2176>.
- [128] Patel SA, Qureshi MM, Mak KS, Sahni D, Giacalone NJ, Ezzat W, et al. Impact of total radiotherapy dose on survival for head and neck Merkel cell carcinoma after resection. *Head Neck* 2017;39:1371–7. <https://doi.org/10.1002/hed.24776>.
- [129] Veness M, Howle J. Radiotherapy alone in patients with Merkel cell carcinoma: the Westmead Hospital experience of 41 patients. *Australas J Dermatol* 2015;56:19–24. <https://doi.org/10.1111/ajd.12263>.
- [130] Dubois M, Rached HA, Escande A, Dezoteux F, Darloy F, Jouin A, et al. Outcome of early stage Merkel carcinoma treated by exclusive radiation : a study of 53 patients. *Radiat Oncol* 2021;1–9. <https://doi.org/10.1186/s13014-021-01815-4>.
- [131] Terheyden P, Becker JC. New developments in the biology and the treatment of metastatic Merkel cell carcinoma. *Curr Opin Oncol* 2017;29:221–6. <https://doi.org/10.1097/CCO.0000000000000363>.
- [132] Lipson EJ, Vincent JG, Loyo M, Kagohara LT, Luber BS, Wang H, et al. PD-L1 expression in the Merkel cell carcinoma microenvironment: association with inflammation, Merkel cell polyomavirus and overall survival. *Cancer Immunol Res* 2013;1:54–63. <https://doi.org/10.1158/2326-6066.CIR-13-0034>.
- [133] Boyerinas B, Jochems C, Fantini M, Heery CR, Gulley JL, Tsang KY, et al. Antibody-dependent cellular cytotoxicity activity of a Novel Anti-PD-L1 antibody avelumab (MSB0010718C) on human tumor cells. *Cancer Immunol Res* 2015;3:1148–57. <https://doi.org/10.1158/2326-6066.CIR-15-0059>.
- [134] D'Angelo SP, Bhatia S, Brohl AS, Hamid O, Mehnert JM, Terheyden P, et al. Avelumab in patients with previously treated metastatic Merkel cell carcinoma: long-term data and biomarker analyses from the single-arm phase 2 JAVELIN Merkel 200 trial. *J Immunother Cancer* 2020;8:1–10. <https://doi.org/10.1136/jitc-2020-000674>.
- [135] D'Angelo SP, Russell J, Lebbé C, Chmielowski B, Gambichler T, Grob JJ, et al. Efficacy and safety of first-line avelumab treatment in patients with stage IV metastatic Merkel cell carcinoma a preplanned interim analysis of a clinical trial. *JAMA Oncol* 2018;4:1–5. <https://doi.org/10.1001/jamaoncol.2018.0077>.
- [136] Nghiem P, Bhatia S, Lipson EJ, Sharfman WH, Kudchadkar RR, Brohl AS, et al. Durable tumor regression and overall survival in patients with advanced Merkel cell carcinoma receiving pembrolizumab as first-line therapy. *J Clin Oncol* 2019;37:693–702. <https://doi.org/10.1200/JCO.18.01896>.
- [137] Nghiem PT, Bhatia S, Lipson EJ, Kudchadkar RR, Miller NJ, Annamalai L, et al. PD-1 blockade with pembrolizumab in advanced merkel-cell carcinoma. *N Engl J Med* 2016;374:2542–52. <https://doi.org/10.1056/NEJMoa1603702>.
- [138] Topalian SL, Bhatia S, Hollebecque A, Awada A, Boer JP De, Kudchadkar RR, et al. Abstract CT074: Non-comparative, open-label, multiple cohort, phase 1/2 study to evaluate nivolumab (NIVO) in patients with virus-associated tumors (Check-Mate 358): Efficacy and safety in Merkel cell carcinoma (MCC). *Clin. Trials. American Association for Cancer Research*; 2017. <https://doi.org/10.1158/1538-7445.AM2017-CT074>. CT074–CT074.
- [139] Kaufman Howard L, Russell Jeffery, Hamid Omid, Bhatia Shailender, Terheyden Patrick, D'Angelo Sandra P, et al. Avelumab in patients with chemotherapy-refractory metastatic Merkel cell carcinoma: a multicentre, single-group, open-label, phase 2 trial. *Lancet Oncol* 2016;17:1374–85. [https://doi.org/10.1016/S1470-2045\(16\)30364-3](https://doi.org/10.1016/S1470-2045(16)30364-3).
- [140] Kaufman HL, Russell JS, Hamid O, Bhatia S, Terheyden P, D'Angelo SP, et al. Updated efficacy of avelumab in patients with previously treated metastatic Merkel cell carcinoma after ≥1 year of follow-up: JAVELIN Merkel 200, a phase 2 clinical trial. *J Immunother Cancer* 2018;6:4–10. <https://doi.org/10.1186/s40425-017-0310-x>.
- [141] Walker JW, Lebbé C, Grignani G, Nathan P, Dirix L, Fenig E, et al. Efficacy and safety of avelumab treatment in patients with metastatic Merkel cell carcinoma: experience from a global expanded access program. *J Immunother Cancer* 2020;8:4–9. <https://doi.org/10.1136/jitc-2019-000313>.
- [142] Nghiem P, Kaufman HL, Bharmal M, Mahnke L, Phatak H, Becker JC. Systematic literature review of efficacy, safety and tolerability outcomes of chemotherapy regimens in patients with metastatic Merkel cell carcinoma. *Future Oncol* 2017;13:1263–79. <https://doi.org/10.2217/fon-2017-0072>.
- [143] Iyer JG, Blom A, Doumani R, Lewis C, Tarabdkar ES, Anderson A, et al. Response rates and durability of chemotherapy among 62 patients with metastatic Merkel cell carcinoma. *Cancer Med* 2016;5:2294–301. <https://doi.org/10.1002/cam4.815>.
- [144] Voog E, Biron P, Martin J-P, Blay J-Y. Chemotherapy for patients with locally advanced or metastatic Merkel cell carcinoma. *Cancer* 1999;85:2589–95. [https://doi.org/10.1002/\(SICI\)1097-0142\(19990615\)85:12<2589::AID-CNCR15>3.0.CO;2-F](https://doi.org/10.1002/(SICI)1097-0142(19990615)85:12<2589::AID-CNCR15>3.0.CO;2-F).
- [145] Becker JC, Hassel JC, Menzer C, Kähler KC, Eigentler TK, Meier FE, et al. Adjuvant ipilimumab compared with observation in completely resected Merkel cell carcinoma (ADMEC): a randomized, multicenter DeCOG/ADO study. *J Clin Oncol* 2018;36. [https://doi.org/10.1200/JCO.2018.36.15\\_suppl.9527](https://doi.org/10.1200/JCO.2018.36.15_suppl.9527). 9527–9527.



- [146] Nivolumab adjuvant (NCT02196961); ADMEC (DeCOG); Ph-II, open, randomized vs observation; [www.clinicaltrials.gov](http://www.clinicaltrials.gov) [n.d].
- [147] Topalian SL, Bhatia S, Amin A, Kudchadkar RR, Sharfman WH, Lebbé C, et al. Neoadjuvant nivolumab for patients with resectable Merkel cell carcinoma in the CheckMate 358 trial. *J Clin Oncol* 2020;38:2476–87. <https://doi.org/10.1200/JCO.20.00201>.
- [148] Nasser E. Merkel cell carcinoma. *Can Fam Physician* 2012;58:967–9.
- [149] van Veenendaal LM, Madu MF, Tesselaar MET, Verhoef C, Grünhagen DJ, van Akkooi ACJ. Efficacy of isolated limb perfusion (ILP) in patients with Merkel cell carcinoma (MCC): a multicenter experience. *Eur J Surg Oncol* 2017;43:2157–62. <https://doi.org/10.1016/j.ejso.2017.07.015>.
- [150] O'Donoghue C, Perez MC, Mullinax JE, Hardman D, Sileno S, Naqvi SMH, et al. Isolated limb infusion: a single-center experience with over 200 infusions. *Ann Surg Oncol* 2017;24:3842–9. <https://doi.org/10.1245/s10434-017-6107-9>.
- [151] Iyer JG, Parvathaneni U, Gooley T, Miller NJ, Markowitz E, Blom A, et al. Single-fraction radiation therapy in patients with metastatic Merkel cell carcinoma. *Cancer Med* 2015;4:1161–70. <https://doi.org/10.1002/cam4.458>.
- [152] Cotter SE, Devlin PM, Sahni D, Hansen JL, O'Farrell DA, Ng AK, et al. Treatment of cutaneous metastases of merkel cell carcinoma with surface-mold computer-optimized high-dose-rate brachytherapy. *J Clin Oncol* 2010;28:e464–6. <https://doi.org/10.1200/JCO.2010.29.0635>.
- [153] Garibyan L, Cotter SE, Hansen JL, Noell C, Dorosario A, O'Farrell DA, et al. Palliative treatment for in-transit cutaneous metastases of merkel cell carcinoma using surface-mold computer-optimized high-dose-rate brachytherapy. *Cancer J* 2013;19:283–7. <https://doi.org/10.1097/PPO.0b013e31829e3566>.
- [154] Schadendorf D, Larkin J, Postow M, Chiarion-sileni V, Gonzalez R, Rutkowski P, et al. Efficacy and safety outcomes in patients with advanced melanoma (MEL) who discontinued treatment with nivolumab (NIVO) plus ipilimumab (IPI) due to toxicity Disclosures : Dirk Schadendorf , MD • Research funding from Merck and Bristol-Myers Squibb • n.d.:1–18.
- [155] Sarfati D, Koczwara B, Jackson C. The impact of comorbidity on cancer and its treatment. *CA A Cancer J Clin* 2016;66:337–50. <https://doi.org/10.3322/caac.21342>.
- [156] Mohile SG, Dale W, Somerfield MR, Schonberg MA, Boyd CM, Burhenn PS, et al. Practical assessment and management of Vulnerabilities in older patients receiving chemotherapy: ASCO guideline for geriatric oncology. *J Clin Oncol* 2018;36:2326–47. <https://doi.org/10.1200/JCO.2018.78.8687>.
- [157] Decoster L, Van Puyvelde K, Mohile S, Wedding U, Basso U, Colloca G, et al. Screening tools for multidimensional health problems warranting a geriatric assessment in older cancer patients: an update on SIOG recommendations. *Ann Oncol* 2015;26:288–300. <https://doi.org/10.1093/annonc/mdu210>.
- [158] Scotté F, Bossi P, Carola E, Cudennec T, Dielenseger P, Gomes F, et al. Addressing the quality of life needs of older patients with cancer: a SIOG consensus paper and practical guide. *Ann Oncol* 2018;29:1718–26. <https://doi.org/10.1093/annonc/mdy228>.
- [159] Fallon M, Giusti R, Aielli F, Hoskin P, Rolke R, Sharma M, et al. Management of cancer pain in adult patients: ESMO Clinical Practice Guidelines. *Ann Oncol* 2018;29:iv166–i191. <https://doi.org/10.1093/annonc/mdy152>.
- [160] WHO guidelines for the pharmacological and radiotherapeutic management of cancer pain in adults and adolescents. Geneva: World Health Organization; 2018. Licence: CC BY-NC-SA 3.0 IGO. n.d.
- [161] da Costa Santos CM, de Mattos Pimenta CA, Nobre MRC. A systematic review of topical treatments to control the odor of malignant fungating wounds. *J Pain Symptom Manag* 2010;39:1065–76. <https://doi.org/10.1016/j.jpainsymman.2009.11.319>.
- [162] Villela-Castro DL, Santos VLC de G, Woo K. Polyhexanide versus metronidazole for odor management in malignant (fungating) wounds. *J Wound, Ostomy Cont Nurs* 2018;1. <https://doi.org/10.1097/WON.0000000000000460>.
- [163] Pereira J, Phan T. Management of bleeding in patients with advanced cancer. *Oncol* 2004;9:561–70. <https://doi.org/10.1634/theoncologist.9-5-561>.
- [164] Harms PW, Harms KL, Moore PS, DeCaprio JA, Nghiem P, Wong MKK, et al. The biology and treatment of Merkel cell carcinoma: current understanding and research priorities. *Nat Rev Clin Oncol* 2018;15:763–76. <https://doi.org/10.1038/s41571-018-0103-2>.
- [165] Tabachnick-Cherny S, Pulliam T, Church C, Koelle DM, Nghiem P. Polyomavirus-driven Merkel cell carcinoma: prospects for therapeutic vaccine development. *Mol Carcinog* 2020;59:807–21. <https://doi.org/10.1002/mc.23190>.
- [166] Song Y, Zheng C, Shannon AB, Fraker DL, Miura JT, Karakousis GC. Sentinel lymph node positivity and overall survival in immunosuppressed patients with Merkel cell carcinoma: a national cohort study. *Br J Dermatol* 2020;183:569–71. <https://doi.org/10.1111/bjd.19021>.
- [167] Koljonen V, Kukko H, Tukiainen E, Böhling T, Sankila R, Pukkala E, et al. Incidence of Merkel cell carcinoma in renal transplant recipients. *Nephrol Dial Transplant* 2009;24:3231–5. <https://doi.org/10.1093/ndt/gfp334>.
- [168] D'Arcy ME, Castenson D, Lynch CF, Kahn AR, Morton LM, Shiels MS, et al. Risk of rare cancers among solid organ transplant recipients. *J Natl Cancer Inst* 2021;113:199–207. <https://doi.org/10.1093/jnci/djaa078>.
- [169] Arron ST, Canavan T, Yu SS. Organ transplant recipients with Merkel cell carcinoma have reduced progression-free, overall, and disease-specific survival independent of stage at presentation. *J Am Acad Dermatol* 2014;71:684–90. <https://doi.org/10.1016/j.jaad.2014.05.054>.
- [170] Paulson KG, Iyer JG, Blom A, Warton EM, Sokil M, Yelistratova L, et al. Systemic immune suppression predicts diminished merkel cell carcinoma-specific survival independent of stage. *J Invest Dermatol* 2013;133:642–6. <https://doi.org/10.1038/jid.2012.388>.
- [171] Collins L, Quinn A, Stasko T. Skin cancer and immunosuppression. *Dermatol Clin* 2019;37:83–94. <https://doi.org/10.1016/j.det.2018.07.009>.
- [172] Engels EA, Frisch M, Goedert JJ, Biggar RJ, Miller RW. Merkel cell carcinoma and HIV infection. *Lancet* 2002;359:497–8. [https://doi.org/10.1016/S0140-6736\(02\)07668-7](https://doi.org/10.1016/S0140-6736(02)07668-7).
- [173] Hemminki K, Liu X, Ji J, Sundquist J, Sundquist K. Kaposi sarcoma and Merkel cell carcinoma after autoimmune disease. *Int J Cancer* 2012;131:E326–8. <https://doi.org/10.1002/ijc.27376>.
- [174] Sahi H, Sihto H, Artama M, Koljonen V, Böhling T, Pukkala E. History of chronic inflammatory disorders increases the risk of Merkel cell carcinoma, but does not correlate with Merkel cell polyomavirus infection. *Br J Cancer* 2017;116:260–4. <https://doi.org/10.1038/bjc.2016.391>.
- [175] Cook M, Baker K, Redman M, Lachance K, Nguyen MH, Parvathaneni U, et al. Differential outcomes among immunosuppressed patients with Merkel cell carcinoma. *Am J Clin Oncol Cancer Clin Trials* 2019;42:82–8. <https://doi.org/10.1097/COC.0000000000000482>.
- [176] Ma J, Brewer J. Merkel cell carcinoma in immunosuppressed patients. *Cancers* 2014;6:1328–50. <https://doi.org/10.3390/cancers6031328>.
- [177] Tseng YD, Nguyen MH, Baker K, Cook M, Redman M, Lachance K, et al. Effect of patient immune status on the efficacy of radiation therapy and recurrence-free survival among 805 patients with merkel cell carcinoma. *Int J Radiat*

- Oncol 2018;102:330–9. <https://doi.org/10.1016/j.ijrobp.2018.05.075>.
- [178] De Bruyn P, Van Gestel D, Ost P, Kruse V, Brochez L, Van Vlierberghe H, et al. Immune checkpoint blockade for organ transplant patients with advanced cancer: how far can we go? *Curr Opin Oncol* 2019;31:54–64. <https://doi.org/10.1097/CCO.0000000000000505>.
- [179] Fisher J, Zeitouni N, Fan W, Samie FH. Immune checkpoint inhibitor therapy in solid organ transplant recipients: a patient-centered systematic review. *J Am Acad Dermatol* 2020;82:1490–500. <https://doi.org/10.1016/j.jaad.2019.07.005>.
- [180] Singh P, Visger Von J, Prosek J, Rovin B, Pesavento TE, Olencki T, et al. Preserved renal allograft function and successful treatment of metastatic merkel cell cancer post nivolumab therapy. *Transplantation* 2019;103. <https://doi.org/10.1097/TP.0000000000002502>. e52–3.
- [181] Leiter U, Loquai C, Reinhardt L, Rafei-Shamsabadi D, Gutzmer R, Kaehler K, et al. Immune checkpoint inhibition therapy for advanced skin cancer in patients with concomitant hematological malignancy: a retrospective multicenter DeCOG study of 84 patients. *J Immunother Cancer* 2020;8:e000897. <https://doi.org/10.1136/jitc-2020-000897>.
- [182] Heppt MV, Schlaak M, Eigentler TK, Kähler KC, Kiecker F, Loquai C, et al. Checkpoint blockade for metastatic melanoma and Merkel cell carcinoma in HIV-positive patients. *Ann Oncol* 2017;28:3104–6. <https://doi.org/10.1093/annonc/mdx538>.
- [183] Linge A, Rauschenberg R, Blum S, Spornraft-Ragaller P, Meier F, Troost EGC. Successful immunotherapy and irradiation in a HIV-positive patient with metastatic Merkel cell carcinoma. *Clin Transl Radiat Oncol* 2019;15:42–5. <https://doi.org/10.1016/j.ctro.2018.12.004>.
- [184] Shah NJ, Al-Shbool G, Blackburn M, Cook M, Belouali A, Liu SV, et al. Safety and efficacy of immune checkpoint inhibitors (ICIs) in cancer patients with HIV, hepatitis B, or hepatitis C viral infection. *J Immunother Cancer* 2019;7:353. <https://doi.org/10.1186/s40425-019-0771-1>.
- [185] Park SY, Church C, Alexander NA, Shinohara MM, Paulson KG, Lewis KD, et al. Immune checkpoint inhibitor therapy in HIV-associated Merkel cell carcinoma: a case series of 3 patients. *JAAD Case Reports* 2021;8:28–33. <https://doi.org/10.1016/j.jdc.2020.11.020>.
- [186] Euvrard S, Morelon E, Rostaing L, Goffin E, Brocard A, Tromme I, et al. Sirolimus and secondary skin-cancer prevention in kidney transplantation. *N Engl J Med* 2012;367:329–39. <https://doi.org/10.1056/NEJMoa1204166>.
- [187] Hoogendijk-van den Akker JM, Harden PN, Hoitsma AJ, Proby CM, Wolterbeek R, Bouwes Bavinck JN, et al. Two-year randomized controlled prospective trial converting treatment of stable renal transplant recipients with cutaneous invasive squamous cell carcinomas to sirolimus. *J Clin Oncol* 2013;31:1317–23. <https://doi.org/10.1200/JCO.2012.45.6376>.
- [188] Dantal J, Morelon E, Rostaing L, Goffin E, Brocard A, Tromme I, et al. Sirolimus for secondary prevention of skin cancer in kidney transplant recipients: 5-year results. *J Clin Oncol* 2018;36:2612–20. <https://doi.org/10.1200/JCO.2017.76.6691>.
- [189] Lachance KS, Thomas HJ, Mcevoy AM, Hippe DSNP. 594 an integrated approach to predict and detect Merkel cell carcinoma recurrences. *J Invest Dermatol* 2018;138(5).
- [190] Becker JC. Merkel cell carcinoma. *Ann Oncol* 2010;21. <https://doi.org/10.1093/annonc/mdq366>. vii81–5.
- [191] Xia Y-J, Cao D-S, Zhao J, Zhu B-Z, Xie J. Frequency and prognosis of metastasis to liver, lung, bone and brain from Merkel cell carcinoma. *Future Oncol* 2020;16:1101–13. <https://doi.org/10.2217/fon-2020-0064>.
- [192] Bzhalava D, Bray F, Storm H, Dillner J. Risk of second cancers after the diagnosis of Merkel cell carcinoma in Scandinavia. *Br J Cancer* 2011;104:178–80. <https://doi.org/10.1038/sj.bjc.6605989>.
- [193] Koljonen V, Kukko H, Tukiainen E, Böbling T, Sankila R, Joensuu H, et al. Second cancers following the diagnosis of Merkel cell carcinoma: a nationwide cohort study. *Cancer Epidemiol* 2010;34:62–5. <https://doi.org/10.1016/j.canep.2009.12.007>.
- [194] Gaiser MR, Daily K, Hoffmann J, Brune M, Enk A, Brownell I. Evaluating blood levels of neuron specific enolase, chromogranin A, and circulating tumor cells as Merkel cell carcinoma biomarkers. *Oncotarget* 2015;6:26472–82. <https://doi.org/10.18632/oncotarget.4500>.
- [195] van Veenendaal LM, Bertolli E, Korse CM, Klop WMC, Tesselaaar MET, van Akkooi ACJ. The clinical utility of neuron-specific enolase (NSE) serum levels as a biomarker for merkel cell carcinoma (MCC). *Ann Surg Oncol* 2021;28:1019–28. <https://doi.org/10.1245/s10434-020-08656-7>.