



**HAL**  
open science

# QM/MM Well-Tempered Metadynamics Study of the Mechanism of XBP1 mRNA Cleavage by Inositol Requiring Enzyme 1 alpha RNase

Sayyed Jalil Mahdizadeh, Emil Palsson, Antonio Carlesso, Eric Chevet, Leif A. Eriksson

► **To cite this version:**

Sayyed Jalil Mahdizadeh, Emil Palsson, Antonio Carlesso, Eric Chevet, Leif A. Eriksson. QM/MM Well-Tempered Metadynamics Study of the Mechanism of XBP1 mRNA Cleavage by Inositol Requiring Enzyme 1 alpha RNase. *Journal of Chemical Information and Modeling*, 2022, 62 (17), pp.4247-4260. 10.1021/acs.jcim.2c00735 . hal-03775441

**HAL Id: hal-03775441**

**<https://hal.science/hal-03775441v1>**

Submitted on 19 Feb 2024

**HAL** is a multi-disciplinary open access archive for the deposit and dissemination of scientific research documents, whether they are published or not. The documents may come from teaching and research institutions in France or abroad, or from public or private research centers.

L'archive ouverte pluridisciplinaire **HAL**, est destinée au dépôt et à la diffusion de documents scientifiques de niveau recherche, publiés ou non, émanant des établissements d'enseignement et de recherche français ou étrangers, des laboratoires publics ou privés.



Distributed under a Creative Commons Attribution 4.0 International License

# QM/MM Well-Tempered Metadynamics Study of the Mechanism of XBP1 mRNA Cleavage by Inositol Requiring Enzyme 1 $\alpha$ RNase

Sayed Jalil Mahdizadeh, Emil Pålsson, Antonio Carlesso, Eric Chevet, and Leif A. Eriksson\*

Cite This: *J. Chem. Inf. Model.* 2022, 62, 4247–4260

Read Online

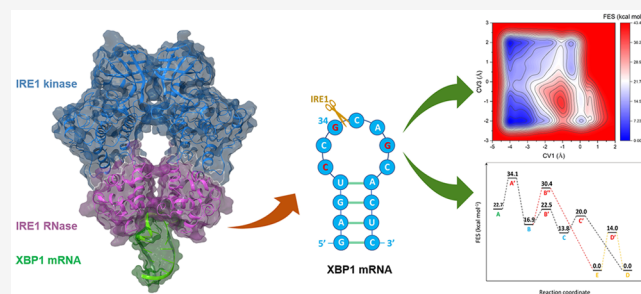
ACCESS |

Metrics & More

Article Recommendations

Supporting Information

**ABSTRACT:** A range of *in silico* methodologies were herein employed to study the unconventional XBP1 mRNA cleavage mechanism performed by the unfolded protein response (UPR) mediator Inositol Requiring Enzyme 1 $\alpha$  (IRE1). Using Protein–RNA molecular docking along with a series of extensive restrained/unrestrained atomistic molecular dynamics (MD) simulations, the dynamical behavior of the system was evaluated and a reliable model of the IRE1/XBP1 mRNA complex was constructed. From a series of well-converged quantum mechanics molecular mechanics well-tempered metadynamics (QM/MM WT-MetaD) simulations using the Grimme dispersion interaction corrected semiempirical parametrization method 6 level of theory (PM6-D3)



and the AMBER14SB-OL3 force field, the free energy profile of the cleavage mechanism was determined, along with intermediates and transition state structures. The results show two distinct reaction paths based on general acid–general base type mechanisms, with different activation energies that perfectly match observations from experimental mutagenesis data. The study brings unique atomistic insights into the cleavage mechanism of XBP1 mRNA by IRE1 and clarifies the roles of the catalytic residues H910 and Y892. Increased understanding of the details in UPR signaling can assist in the development of new therapeutic agents for its modulation.

## INTRODUCTION

The endoplasmic reticulum (ER) is an organelle present in all eukaryotic cells that is involved in maintaining cellular homeostasis.<sup>1</sup> Nascent protein chains enter the ER where they are post-translationally modified and folded by ER-resident foldases, chaperones, and quality control components. Once their correct conformation is acquired, mature proteins exit the ER and disseminate throughout the cell to achieve their functions. Protein folding in the ER can be challenged when the folding demand exceeds the ER folding capacity, in turn leading to the accumulation of improperly folded proteins in this compartment. This situation is known as ER stress. To cope with ER stress and restore cellular homeostasis, an adaptive response named the “unfolded protein response” (UPR) is triggered. The UPR monitors and regulates protein folding within the ER by temporarily increasing the protein folding efficacy to attenuate the accumulation of unfolded/misfolded proteins and increase ER-associated degradation of terminally misfolded proteins.<sup>2</sup> In metazoans, the UPR is mediated by three main sensors: Inositol Requiring Enzyme 1 $\alpha$  (hereafter referred to as IRE1), Protein kinase R-like Endoplasmic Reticulum Kinase (PERK), and Activating Transcription Factor 6 $\alpha$  (ATF6 $\alpha$ ).<sup>1</sup>

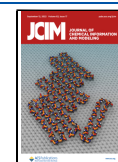
IRE1 is a bifunctional type-I ER-resident transmembrane protein,<sup>2</sup> composed an ER luminal “sensor” domain, a single pass membrane traversing domain, and a cytosolic part containing both kinase and RNase domains. Upon accumu-

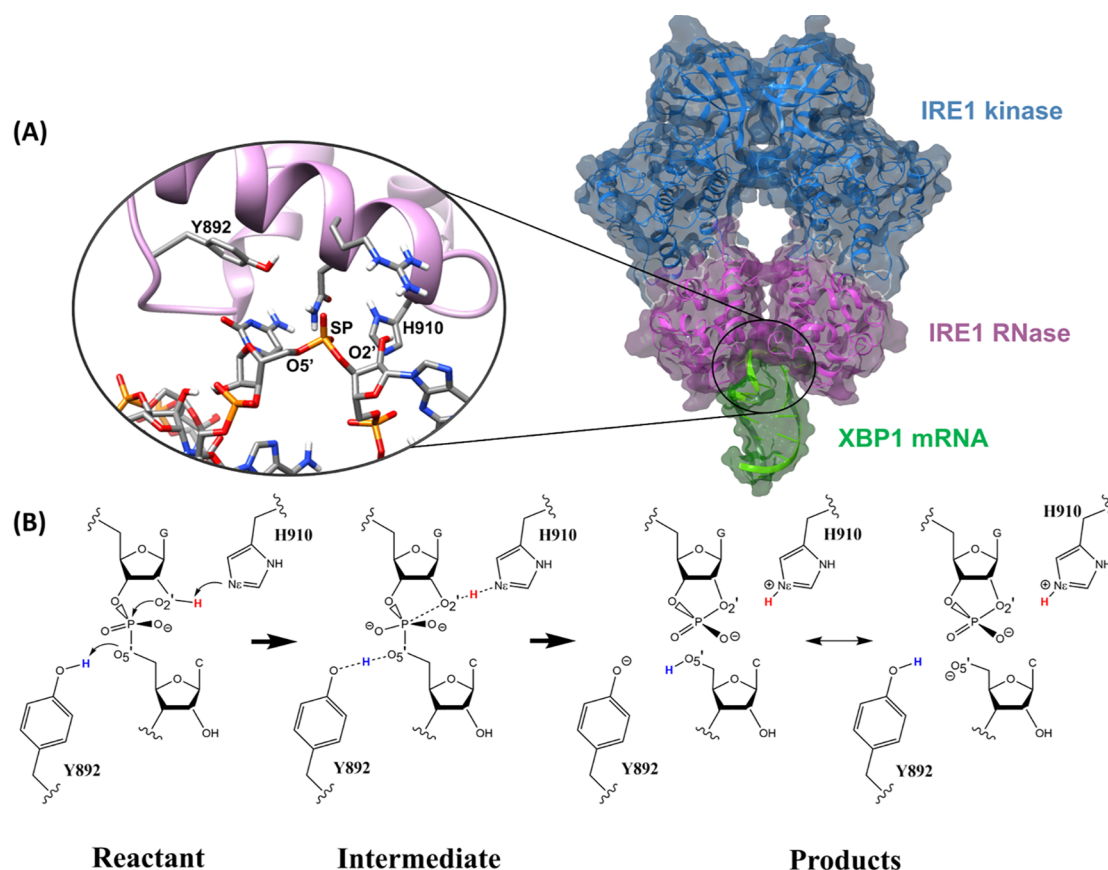
lation of unfolded/misfolded proteins, IRE1 activation is triggered<sup>3,4</sup> (the details of which are still under debate),<sup>5–7</sup> whereby the RNase domain located at the down-end part of the interface between two IRE1 monomers (Figure 1A) excises a 26-nucleotide intron from the X-box binding protein 1 (XBP1) mRNA.<sup>8</sup> XBP1 mRNA cleavage by IRE1 RNase is specific through the cleavage of select stem-loops.<sup>9,10</sup> Furthermore, for XBP1 mRNA splicing to take place, IRE1 tetramers (pairs of dimers) are required because spatial constraints of the RNase binding pocket inhibit the concurrent binding of two XBP1 mRNA stem-loops.<sup>4</sup> After intron excision, the two resulting exon ends are ligated by the tRNA ligase RtcB, and the transformed XBP1s mRNA (“s” for spliced) is translated into a potent transcriptional activator that controls the expression of UPR target genes.

The atomistic details underlying the IRE1 RNase-mediated XBP1 mRNA cleavage mechanism is not fully understood. However, a study on structural and functional bases for RNA cleavage by the *yeast* IRE1<sup>4</sup> suggests a stepwise general acid–

Received: June 9, 2022

Published: August 12, 2022





**Figure 1.** (A) *h*IRE1 back-to-back dimer in complex with mRNA XBP1 single stem-loop complex generated from molecular docking calculations. The kinase and RNase domains of IRE1 dimer are shown in blue and pink, respectively. The luminal and transmembrane domains of *h*IRE1 are not shown in the figure. XBP1 mRNA single stem-loop is represented in green. The zoomed-in picture illustrates the catalytic residues (H910 and Y892) within the active site of the *h*IRE1 RNase in which the XBP1 mRNA cleavage reaction takes place. (B) Schematic 2D illustration of a concerted general acid–general base (GA–GB) reaction mechanism. The catalytic Histidine (H910) acts as a GB and initiates the reaction by abstracting a proton (red) from the Guanosine O2' atom. Tyrosine (Y892) acts as a GA by donating its phenolic proton (blue) to the Cytidine O5' atom.

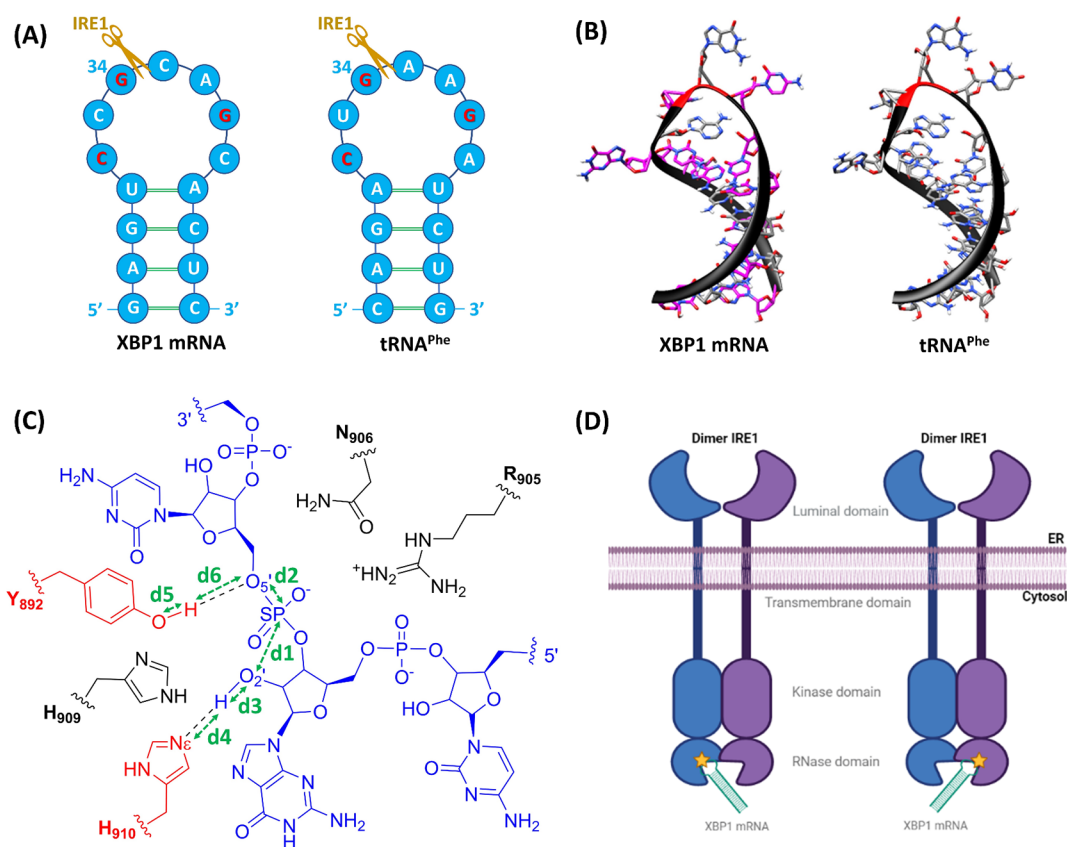
general base (GA–GB) mRNA cleavage mechanism where H1061 and Y1043 (H910 and Y892 in *human* IRE1, respectively) function as the GB and GA, respectively. The stepwise mechanism can be summarized as follows (Figure 1B): (a) The GB abstracts a proton from the O2' position of a nucleotide and becomes positively charged. (b) The negatively charged O2' performs a nucleophilic attack on the phosphorus atom of the scissile phosphate, leading to the formation of a pentavalent dianionic phosphate intermediate. (c) The O5' atom of the leaving nucleotide abstracts a proton from the GA leading to a complete cleavage of the mRNA sequence and formation of a 2'-3' cyclic phosphate. R1056 and N1057 (R905 and N906 in *h*IRE1) also play important roles in this mechanism by coordination of the scissile phosphate and charge stabilization. The same GA–GB mechanism was also proposed for other ribonuclease enzymes such as ribonucleases T1 and A.<sup>11</sup> The stepwise GA–GB mechanism is considered to be favored over the classical concerted mechanism<sup>11</sup> as it allows for the protonated, positively charged GB to electrostatically interact with and stabilize the pentavalent dianionic phosphate intermediate. Mutagenesis analysis in *y*IRE1<sup>4</sup> showed that GB (the catalytic histidine) is essential for the cleavage mechanism since H1061N mutation displays a >300,000-fold rate reduction. It has also been shown that mutation of the catalytic histidine to alanine, asparagine, or

glutamine diminishes catalytic activity of fungal ribonuclease T1 and mammalian RNase A by 1000- to 10,000-fold.<sup>12–14</sup> In addition, mutation of the GA Tyrosine in *y*IRE1 to phenylalanine (Y1043F) does not block the IRE1 RNase activity but reduces the reaction rate by ~10-fold.<sup>4</sup>

In the absence of an atomic resolution cocrystal structure of the IRE1–RNA complex, molecular modeling approaches can be used to provide an approximate picture of the interactions and investigate the RNA cleavage mechanisms. Herein, multiscale *in silico* techniques (i.e., RNA modeling, molecular docking, molecular dynamics simulations, and quantum mechanics/molecular mechanics well-tempered metadynamics simulations) were employed to (a) construct IRE1 back-to-back dimer/XBP1 mRNA single stem-loop complexes as models which take the dynamics of the three-dimensional conformation into consideration (Figure 1A) and (b) quantitatively investigate the cleavage mechanism of mRNA XBP1 by the IRE1 RNase domain (Figure 1B). An IRE1 back-to-back dimer (receptor) and one of the single stem-loops of the mRNA XBP1 (ligand) were used to facilitate the calculations and reduce the complexity of the system.

## METHODS

**IRE1 Back-to-Back Dimer.** The *h*IRE1 back-to-back dimer (Figure 1A) was obtained from the RCSB Protein Data Bank



**Figure 2.** (A) 2D and (B) 3D structures of the modeled XBP1 mRNA single stem-loop and the template used ( $tRNA^{Phe}$ ) for the modeling. IRE1 can target and unconventionally cleave both RNA molecules as they share the same consensus sequence (5'-CNGNNGN-3') within the stem-loops. The mutated residues in the XBP1 mRNA are shown in purple. (C) Composition of the QM subsystem (161 atoms) specified for the QM/MM WT-MetaD simulation. XBP1 stem-loop and two IRE1 catalytic residues (Y892 and H910) are shown in blue and red, respectively. The interatomic distances used to formulate the collective variables are shown by green arrows. (D) Two active catalytic centers (shown by asterisks) within the cleft between the RNase loops of the *h*IRE1 dimer.

(PDB ID, 4YZC;<sup>8</sup> resolution, 2.49 Å). The crystal structure comprises a phosphorylated *h*IRE1 dimer complexed with a Staurosporine molecule in the kinase pocket of each monomer. The *h*IRE1 dimer is in its back-to-back conformation and has an activated cytosolic RNase domain. The dimer structure was prepared using the Schrodinger's protein preparation wizard.<sup>15</sup> The missing hydrogen atoms were added, and the Prime program<sup>16,17</sup> was employed to model absent side chain atoms and missing loops. The protonation states of ionizable residues were determined using the PROPKA tool at pH 7.4. As a final refinement, the protein was subjected to a restrained minimization (RMSD = 0.3 Å) using the OPLS4 force field.<sup>18</sup>

**XBP1 mRNA Single Stem-Loop Modeling.** The template ( $tRNA^{Phe}$ ) utilized in the construction of the mRNA XBP1 single stem-loop was received from the Protein Data Bank (PDB ID, 2ZM5;<sup>19</sup> resolution, 2.55 Å). The crystal structure consists of the tRNA modification enzyme MiaA in complex with  $tRNA^{Phe}$ . It has been shown<sup>4</sup> that  $\gamma$ IRE1 can recognize and cleave  $tRNA^{Phe}$ . To model the XBP1 mRNA single stem-loop, a 15-nucleotide long sequence was cut out from the stem-loop of  $tRNA^{Phe}$ . Thereafter, the bases within the stem-loop were mutated<sup>20</sup> using the "swapna" tool in USCF Chimera<sup>21</sup> to mimic the nucleotide sequence in one of the single stem-loops of *Homo sapiens* XBP1 mRNA (5'-GAGUCCGCAGCACUC-3').<sup>9</sup> Finally, the constructed XBP1 mRNA single stem-loop was prepared using the preparation wizard in the Schrodinger package<sup>15</sup> (Figure 2A and B).

**Molecular Docking.** Molecular docking was performed with HDOCK,<sup>22</sup> a molecular docking web server specialized for protein–protein and protein–DNA/RNA interactions. The *h*IRE1 dimer was used as the receptor and the XBP1 mRNA single stem-loop as the ligand. It has been proven<sup>4</sup> that the RNase domain of each monomer in the IRE1 dimer is catalytically active and can cleave XBP1 mRNA; i.e., there are two active catalytic centers within the cleft between the RNase loops of the IRE1 dimer (Figure 2D). Constraints were applied to guide the XBP1 mRNA single stem-loop toward the catalytic center of either monomers A or B. A successful molecular docking should be able to accommodate the XBP1 mRNA stem-loop in two equivalent orientations, one toward each monomer. The receptor constraints included the four catalytic residues Y892, R905, N906, and H910 from each *h*IRE1 monomer. The ligand constraints included the two nucleotides G34 and C35 which are connected by the scissile phosphate group.

**Molecular Dynamics Simulations.** The best docking model from molecular docking calculations was subjected to a series of extensive MD simulations to further relax and refine the protein–RNA structure, evaluate the dynamical behavior of the system, achieve a better insight about the interatomic interactions, and extend the conformational sampling to find a plausible starting structure for the subsequent quantum mechanics/molecular mechanics well-tempered metadynamics (QM/MM WT-MetaD) simulations. All MD simulations were

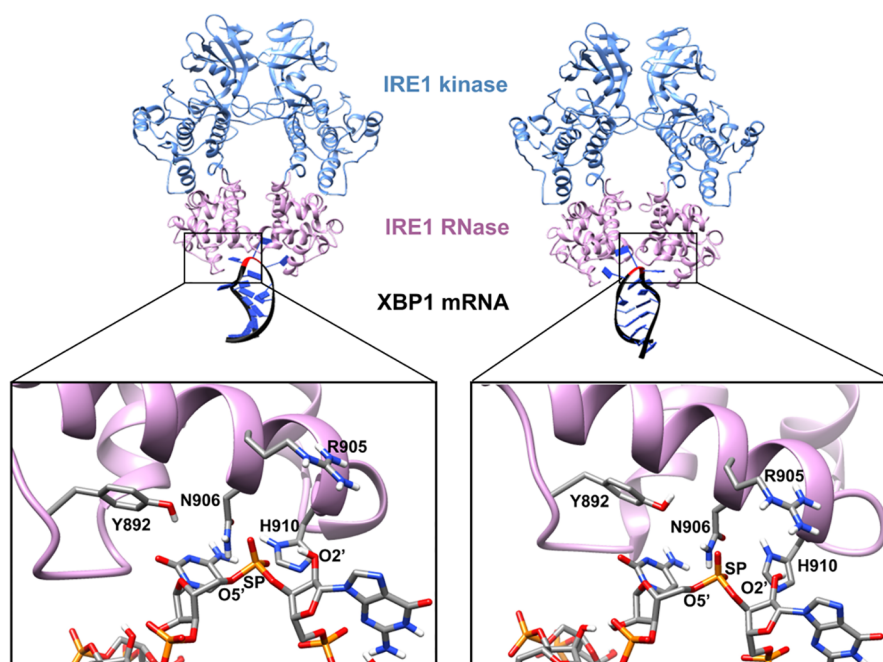
performed in the NPT ensemble using the Desmond MD simulation engine<sup>23</sup> with an OPLS4 force field<sup>18</sup> as implemented in the Schrodinger package. Two systems were explicitly solvated with a TIP3P water model<sup>24</sup> under periodic boundary conditions in a cubic simulation box with a 15 Å buffer in each direction. The systems were neutralized by adding a proper number of K<sup>+</sup> ions, and a 0.15 M MgCl<sub>2</sub> salt concentration was considered. It has been shown that K<sup>+</sup> ions play a role in the stabilization of RNA through phosphate backbones or via coordination to exocyclic groups on stacked nucleotides.<sup>25</sup> MgCl<sub>2</sub> was used because experimental evidence<sup>26</sup> suggest that it results in a stability improvement of RNA molecules. The Nosé–Hoover<sup>27</sup> thermostat (relaxation time of 1 ps) and Martyna–Tobias–Klein<sup>28</sup> barostat (relaxation time of 2 ps) were applied during the simulations to set the systems temperature and pressure at 300 K and 1 atm, respectively. Long-range electrostatic energy and forces were calculated using the particle-mesh Ewald method.<sup>29,30</sup> The SHAKE algorithm<sup>31</sup> has been applied to all covalent bonds between hydrogen and heavy atoms, with a tolerance and maximum iterations of 10<sup>−8</sup> and 8, respectively. The initial minimization and equilibration protocol comprised the following: (i) NVT Brownian dynamics with restraints on solute heavy atoms at *T* = 10 K for 100 ps, (ii) NVT simulation at *T* = 10 K with restraints on solute heavy atoms for 12 ps, (iii) NPT MD simulation at *T* = 10 K with restraints on solute heavy atoms for 12 ps, (iv) NPT MD simulation at *T* = 300 K with restraints on solute heavy atoms for 12 ps, and (v) NPT MD simulation at *T* = 300 K without restraints for 24 ps. Subsequently, a series of consecutive 7 × 50 ns restrained MD simulations were performed in which the restraint force was gradually decreased from 1.0 to 0.0 kcal mol<sup>−1</sup> Å<sup>−2</sup> followed by 200 ns unrestrained MD run. The restraints were applied on the backbone atoms of IRE1 and mRNA XBP1. Each sequential MD simulation was started from the last snapshot of the preceding simulation. From the unrestrained MD simulation, one snapshot was chosen to be used as a starting input structure in the QM/MM WT-MetaD simulation.

**QM/MM WT-MetaD.** The CP2K code<sup>32,33</sup> version 8.2, patched with the enhanced sampling library PLUMED 2.7.2,<sup>34,35</sup> was employed to perform QM/MM WT-MetaD. The system was solvated in a cubic box with TIP3P<sup>24</sup> water molecules and 10 Å buffer distance. The system was neutralized by adding Na<sup>+</sup> ions, and a 0.15 M MgCl<sub>2</sub> salt concentration was implemented. The QM subsystem (Figure 2C) includes the residues C33, G34, C35, and A36 of mRNA XBP1 and side chain atoms of the residues within 6.0 Å distance from the scissile phosphate: Y982, H910, R905, N906, and H909. Residues C33 and A36 were cut through the C–C bonds in 5′ and 3′ positions, respectively. The side chains of amino acid residues were cut through the C<sub>α</sub>–C<sub>β</sub> bonds such that the C<sub>α</sub> and C<sub>β</sub> atoms were part of the MM and QM subsystems, respectively. Linker atoms between QM and MM subsystems were treated using the integrated molecular orbital molecular mechanics (IMOMM) method.<sup>36</sup> The rest of the system was considered as part of the MM subsystem. The semiempirical parametrization method 6 (PM6)<sup>37</sup> level of theory along with the Grimme dispersion interaction correction (PM6-D3)<sup>38</sup> were applied to the QM subsystem. It has been shown that incorporation of the dispersion interaction correction term into the PM6 potential (PM6-D3) improves protein–ligand interaction energies.<sup>39</sup> The PM6 level

of theory has been extensively evaluated for biological systems<sup>40–42</sup> and material science<sup>43–45</sup> and machine learning based studies<sup>46,47</sup> and provides a very good trade-off between the speed of force field techniques and the accuracy of *ab initio* approaches. Therefore, it allows extensive sampling of large (bio)systems, while enabling one to consider the impact of electronic structure changes.<sup>48</sup> In addition, it has recently been proven<sup>49,50</sup> that the performance of PM6 is comparable with the very accurate second-order Møller–Plesset perturbation theory (MP2) approach.<sup>51</sup> Moreover, Chen et al.<sup>52</sup> showed that the accuracy of intermolecular interactions in biological systems (hydrogen bonding and polar interactions) using QM/MM MD simulation with PM6 can reach that obtained in density functional theory (DFT)-based QM/MM MD simulation. Stewart<sup>40</sup> verified the applicability of the PM6 method in protein modeling and evaluation of the biocatalytic reaction in the chymotrypsin-catalyzed hydrolysis of a peptide bond. PM6-D3 level of theory has furthermore been recommended as a suitable technique for large host–guest systems.<sup>53</sup>

The MM subsystem was modeled using the side chain and backbone-modified AMBER14 force field (ff14SB)<sup>54</sup> along with the OL3 parameters for RNA molecules.<sup>55</sup> Prior to the QM/MM-WT-MetaD simulation, the system was subjected to 1000 steps of energy minimization using the limited-memory Broyden–Fletcher–Goldfarb–Shanno (LBFGS) algorithm<sup>56</sup> and equilibrated by conducting 1 ns NVT followed by 2 ns NPT classical MD simulations, where the temperature and pressure were controlled at 298 K and 1 atm using canonical sampling through a velocity rescaling (CSVR)<sup>57</sup> thermostat and barostat, respectively, with a 100 fs relaxation time in both and a fixed time step of 0.5 fs. A 10 Å cutoff distance was applied for nonbonded interactions while the smooth particle-mesh Ewald (SPME) technique<sup>30</sup> was used for the long-range electrostatic interactions.

The collective variables (CVs) for the QM/MM WT-MetaD simulation were carefully chosen to fully represent the RNA cleavage reaction (Figure 2C): CV1 represents the nucleophilic attack of O2′ to the phosphorus atom of the scissile phosphate (SP) that results in formation of the O2′–SP (d1) and breakage of the O5′–SP (d2) bonds. Therefore, CV1 was thus considered as the length difference between d1 and d2 (CV1 = d1 – d2). CV2 represents the activation of the nucleophile atom O2′ through a proton transfer reaction from O2′ atom to Nε atom of GB(H910) which leads to breakage of O2′–H (d3) and formation of Nε–H (d4) bonds (CV2 = d3 – d4). CV3 represents the proton transfer reaction from the side chain hydroxyl group of GA(Y892) to the recently detached cytidine O5′ atom which results in breakage of O–H (d5) and formation of O5′–H (d6) bonds (CV3 = d5 – d6). To enhance the sampling procedure of the CV space, the system was biased by adding a Gaussian kernel with the initial height of 0.5 kcal mol<sup>−1</sup> and width of 0.1 Å every 100 MD steps (50 fs). A biasing factor of 17.89 (i.e., 10 kcal mol<sup>−1</sup>) was set to scale down the heights of spawning Gaussian kernels. The rest of the settings were the same as in classical MD. The QM/MM WT-MetaD simulations stopped when the convergence criteria were satisfied. The reweighting (unbiasing) method and block analysis were used to monitor the convergence and to calculate the errors in the free energy estimation.



**Figure 3.** Best docking poses (Model\_A1 and Model\_B1) generated by molecular docking. The top panel shows the entire complexes where the Kinase and RNase domains of the IRE1 dimer are shown in blue and pink, respectively. The XBP1 mRNA single stem-loop is represented as ribbon (black) and tubes/slabs (dark blue). The cleavage site of the XBP1 mRNA is highlighted in red. The bottom panel is a zoomed-in illustration of the active sites in the RNase domain of each IRE1 monomer along with the residues important in the cleavage mechanism discussed in the text. The atoms in the active site are colored as carbon in gray, hydrogen in white, nitrogen in blue, oxygen in red, and phosphorus in orange. Hydrogen atoms bound to carbon are omitted for clarity. The luminal and transmembrane domains of *hIRE1* are not shown in the figure.

## RESULTS AND DISCUSSION

### Construction of the XBP1 mRNA Single Stem-Loop.

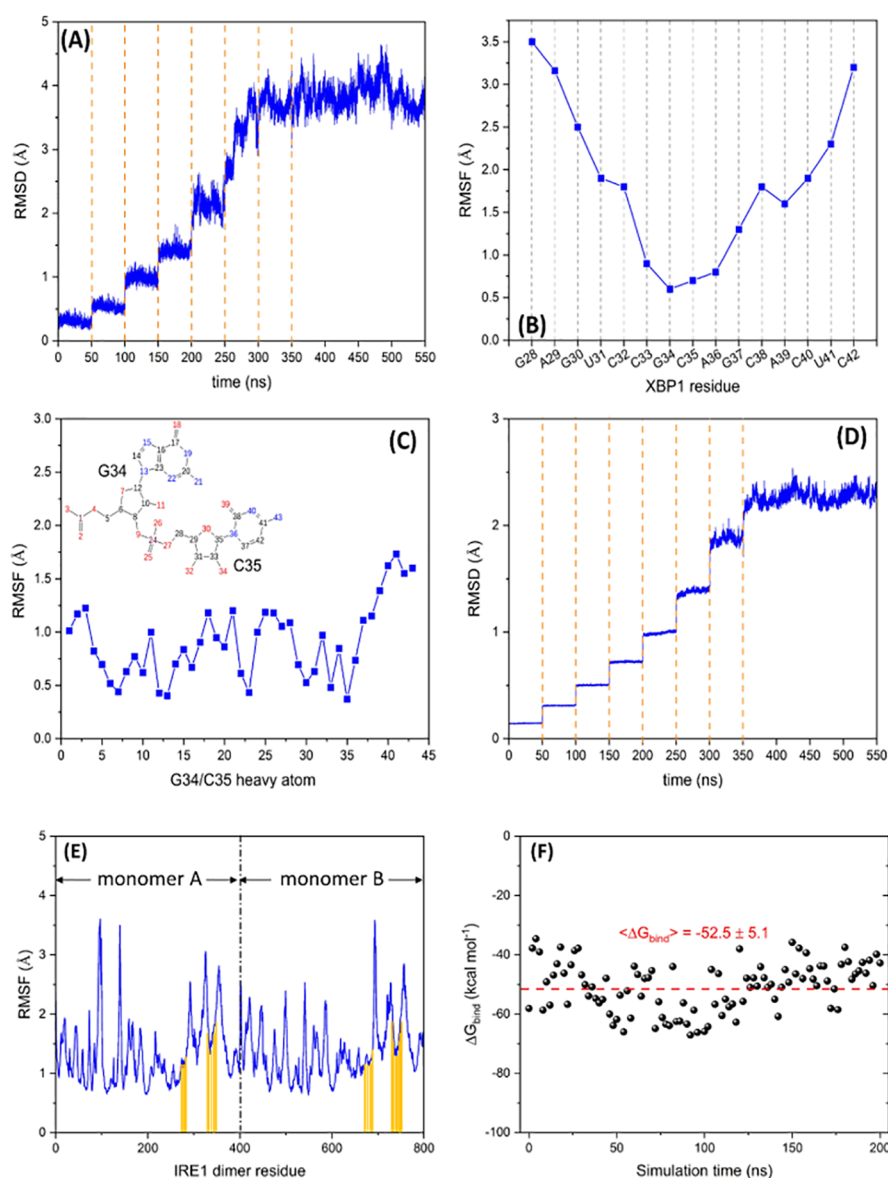
Figure 2A and B shows 2D and 3D structural comparisons between the template tRNA<sup>Phe</sup> and mRNA XBP1 single stem-loops. As Figure 2A indicates, the conserved sequence of “CNGNNGN”, which is a fingerprint characterization of IRE1 substrates, exists within the stem-loop of both structures. The cleavage sites in tRNA<sup>Phe</sup> and XBP1 are GC and GA, respectively (Figure 2A). The dissimilarity in nucleobase composition after the mutations causes some variations in the atomic coordinates, especially in the case of purine to pyrimidine mutations. The possible close atomic contacts and clashes were resolved by system preparation followed by restrained minimization. Moreover, the final IRE1/XBP1 mRNA complex was subjected to multiple restrained MD refinement steps which further improved the quality of the XBP1 mRNA stem-loop structure and the interaction network in the interface of the protein and RNA. The template-based approach used herein was preferred over *de novo* RNA modeling of XBP1 mRNA because of its 3D complexity, which is challenging for RNA structure prediction engines.<sup>58</sup> As Figure 2D illustrates, the final unconstrained MD simulation shows that the XBP1 mRNA model remained stable during the simulation.

**Molecular Docking.** Constrained Protein–RNA docking was employed to generate IRE1 back-to-back dimer/XBP1 mRNA single stem-loop complexes (Figure 3). Molecular docking resulted in 20 poses (10 poses toward each catalytic center). Table 1 shows the docking score values associated with the docking poses. As Table 1 indicates, the best models (Model\_A1 and Model\_B1) have significantly better docking scores compared to the other models. Model\_A1 and Model\_B1 not only have similar docking scores but the

**Table 1.** Docking Score Values Associated with Each Docking Model Obtained from the HDock Docking Engine

Toward catalytic center of monomer A	Docking score	Toward catalytic center of monomer B	Docking score
Model_A1	−293.82	Model_B1	−294.33
Model_A2	−268.61	Model_B2	−264.58
Model_A3	−262.03	Model_B3	−254.40
Model_A4	−249.81	Model_B4	−254.11
Model_A5	−249.60	Model_B5	−249.97
Model_A6	−242.08	Model_B6	−249.13
Model_A7	−232.17	Model_B7	−241.60
Model_A8	−230.52	Model_B8	−238.77
Model_A9	−228.99	Model_B9	−231.27
Model_A10	−227.61	Model_B10	−226.96

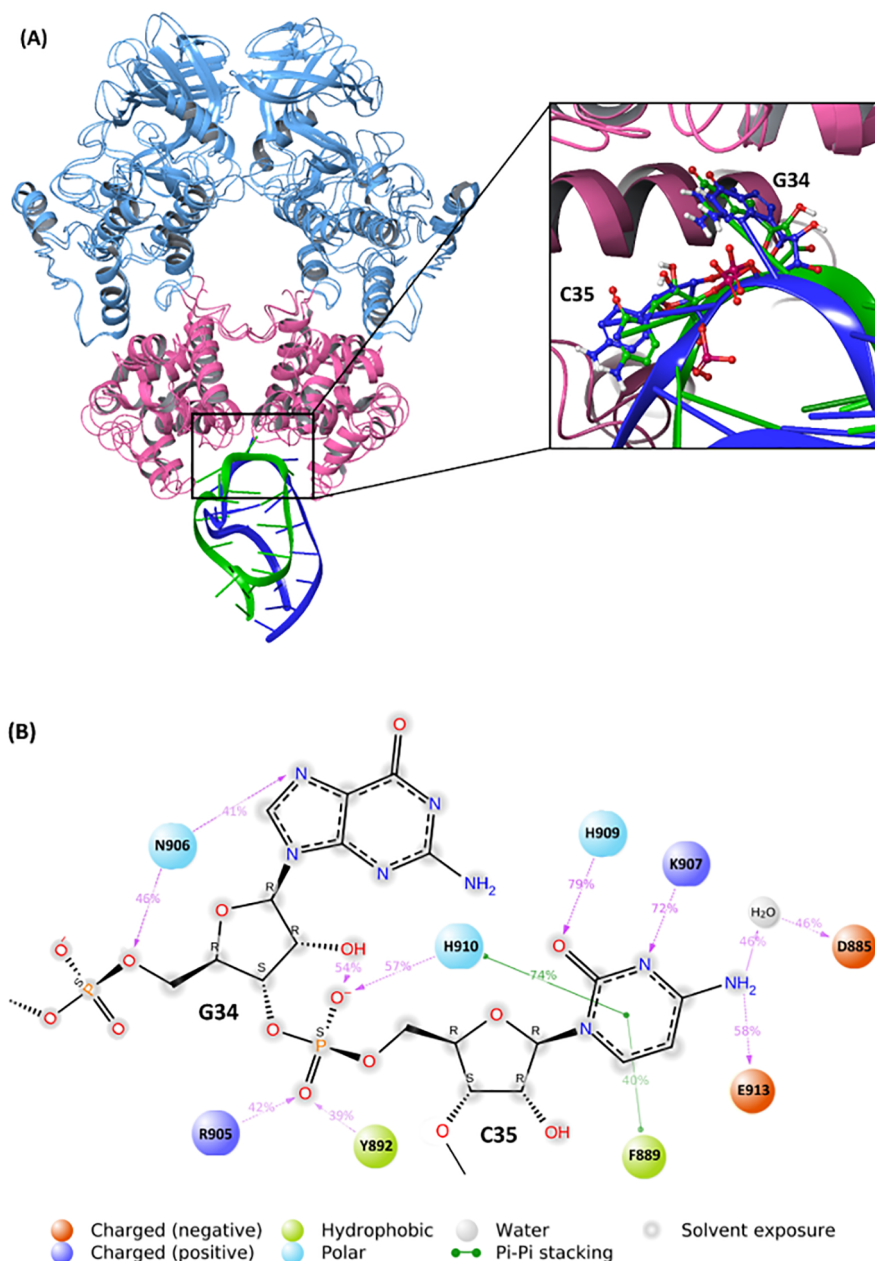
XBP1 mRNAs stem-loops are also bound in an equivalent orientation into the RNase cleft of the *hIRE1* dimer, where the scissile phosphate groups were favorably positioned for a GA–GB mechanism. The best two docking models (Model\_A1 and Model\_B1) are shown in Figure 3. A closer inspection revealed the following: (a) H910 is positioned to act as a GB by abstracting proton from the O2′ atom of guanosine and activate the nucleophile. (b) Y892 is well oriented to act as a GA by donating its proton to the cytidine O5′ atom. (c) R905 and N906 are positioned to alleviate the negative charge on the scissile phosphate and hold it in a position suitable for the reaction. (d) The O2′–SP–O5′ angle is rather close to linear ( $\sim -150^\circ$  for both monomers) which is believed to be relevant for a “S<sub>N</sub>2-like” nucleophile attack reaction mechanism.<sup>59</sup> These results confirm the successful molecular docking calculations.



**Figure 4.** Backbone (A) RMSD and (B) RMSF of the XBP1 mRNA bound to the *h*IRE1 back-to-back dimer during a consecutive series of  $7 \times 50$  ns restrained MD simulations followed by a final 200 ns unrestrained run. (C) Heavy-atom RMSF of the XBP1 mRNA binding nucleotides (G34/C35) during the classical MD simulation. Backbone (D) RMSD and (E) RMSF of the *h*IRE1 dimer bound to XBP1 mRNA during the MD simulations. The interacting residues of the *h*IRE1 dimer with XBP1 mRNA are marked with orange vertical bars. (F) Free energy of binding ( $\Delta G_{\text{bind}}$ ) between the *h*IRE1 dimer and XBP1 mRNA calculated for 100 snapshots extracted from the 200 ns unrestrained MD trajectory.

**Molecular Dynamics Simulations.** Since Model\_A1 and Model\_B1 are equivalent (Table 1 and Figure 3), one of the models (Model\_A1) was selected and subjected to multiple restrained MD simulation refinement to better sample the conformational space. The IRE1–XBP1 mRNA interface is sequence and structure specific,<sup>9,10</sup> and the protein–RNA interface contains a complex network of interactions. These sort of convoluted protein–RNA complexes have shown to be challenging to be accurately described using traditional MD simulations.<sup>60,61</sup> Therefore, restraints<sup>62</sup> were applied during MD simulations to gradually relax the complex from the initially docked conformation and allow sampling of different conformational states without disrupting too much the interactions at the protein–RNA interface. Figure 4A shows the backbone RMSD of XBP1 mRNA bound to the RNase domain of the IRE1 dimer during a series of  $7 \times 50$  ns consecutive restrained MD simulations followed by a final 200

ns unrestrained run. As Figure 4A indicates, the backbone RMSD of XBP1 mRNA reaches a converged value of  $\sim 4$  Å. This is relatively high and implies some conformational changes during the MD simulation. To further evaluate this conformational change, the backbone root mean squared fluctuation (RMSF) of XBP1 mRNA was calculated and is presented in Figure 4B. As Figures 4B and 5A show, the main conformational changes occur at the two free ends of XBP1 mRNA while the binding region (G34 and C35) remains almost intact (RMSF = 0.7–0.8 Å) when compared to the initial structure (Model\_A1). Figure 4C illustrates the heavy-atom RMSF graph of G34 and C35 with an average value of 0.9 Å, confirming the minor movement of the binding nucleotides. The dynamical behavior and possible conformational reorientation of the *h*IRE1 dimer as a receptor protein was also investigated through the backbone RMSD and RMSF graphs, shown in the Figure 4D and E, respectively. Figure 4D



**Figure 5.** (A) Last snapshot of the MD simulation ( $t = 550$  ns) superposed on the initial structure. The XBP1 mRNA in the first and last snapshots are presented in dark blue and green colors, respectively. The zoomed-in picture illustrates the nucleotides G34 and C35 bound to the RNA binding site. The Kinase and RNase domains of the *hIRE1* dimer are shown in light blue and pink, respectively. (B) Abundance of atomic interactions between the *hIRE1* dimer and nucleotides G34/C35 of XBP1 mRNA evaluated during the 200 ns unrestrained MD simulation.

indicates that the backbone RMSD of the dimer IRE1 reaches a plateau at  $\sim 2.3$  Å while the average backbone RMSF of the interacting residues in the RNA binding site (marked with orange vertical bars in Figure 4E) is  $\sim 1.5$  Å.

Figure 5A shows the last snapshot of the MD simulation ( $t = 550$  ns) superposed on the initial structure, and the zoomed-in picture illustrates the nucleotides G34 and C35 bound to the RNA binding site. The abundance of atomic interactions between the *hIRE1* dimer and nucleotides G34/C35 of XBP1 mRNA was evaluated during the last 200 ns unrestrained MD simulation (Figure 5B). The catalytic residue H910 (GB) forms a hydrogen bonding interaction with a nonbridging oxygen atom of the scissile phosphate group (close to the nucleophile O2' atom) along with a  $\pi$ - $\pi$  stacking with the

pyrimidine ring of C35. These interactions are strong enough to keep H910 in the vicinity of the nucleophile O2' atom. Y892 (GA) and R905 form hydrogen bonding interactions with the other nonbridging oxygen atom of the scissile phosphate (close to the leaving group OS' atom). N906 forms two hydrogen bonds with a nitrogen atom of the purine ring and the OS' atom of G34, keeping this nucleotide fixed. The free energy of binding between *hIRE1* dimer and XBP1 mRNA ( $\Delta G_{\text{bind}}$ ) has been estimated using molecular mechanics with generalized Born surface area (MM/GBSA)<sup>63</sup> as implemented in the Schrodinger package. The average free energy of binding ( $\langle \Delta G_{\text{bind}} \rangle$ ) was calculated over 100 snapshots extracted from 200 ns unrestrained MD simulation (every 2 ns) and is presented in Figure 4F. The negative average value ( $-52.5 \pm 5.1$  kcal



**Table 2.** Interatomic Distances and CV Values of the Selected MD Snapshot and Stationary Points on the Free Energy Surface Obtained from the QM/MM WT-MetaD Simulation.<sup>a</sup>

Structure	d1	d2	d3	d4	d5	d6	CV1	CV2	CV3
MD snapshot	2.21	1.68	1.02	4.57	1.01	4.48	–	–	–
A	2.23	1.66	1.00	2.88	1.05	2.91	0.57	–1.88	–1.86
A'	2.09	1.70	1.15	1.33	1.04	3.04	0.39	–0.18	–2.00
B	1.77	1.72	2.99	1.03	1.05	3.03	0.05	1.96	–1.98
B'	1.65	1.78	2.98	1.03	1.22	1.49	–0.13	1.95	–0.27
C	1.66	2.17	2.99	1.04	2.98	1.03	–0.51	1.95	1.95
C'	1.65	2.74	2.98	1.03	2.96	1.04	–1.10	1.95	1.92
D	1.66	5.51	3.05	1.03	3.03	1.03	–3.85	2.02	2.00
D'	1.66	5.57	3.01	1.05	1.16	1.31	–3.91	1.96	–0.15
E	1.66	5.37	3.01	1.04	1.05	3.06	–3.71	1.97	–2.01
B''	1.67	2.64	3.02	1.03	1.04	3.00	–0.97	1.99	–1.96

<sup>a</sup>Interatomic distances d1–d6 refer to Figure 2C.

mol<sup>–1</sup>) confirms that the interaction between the protein and RNA is favorable, and the resulting complex is stable.

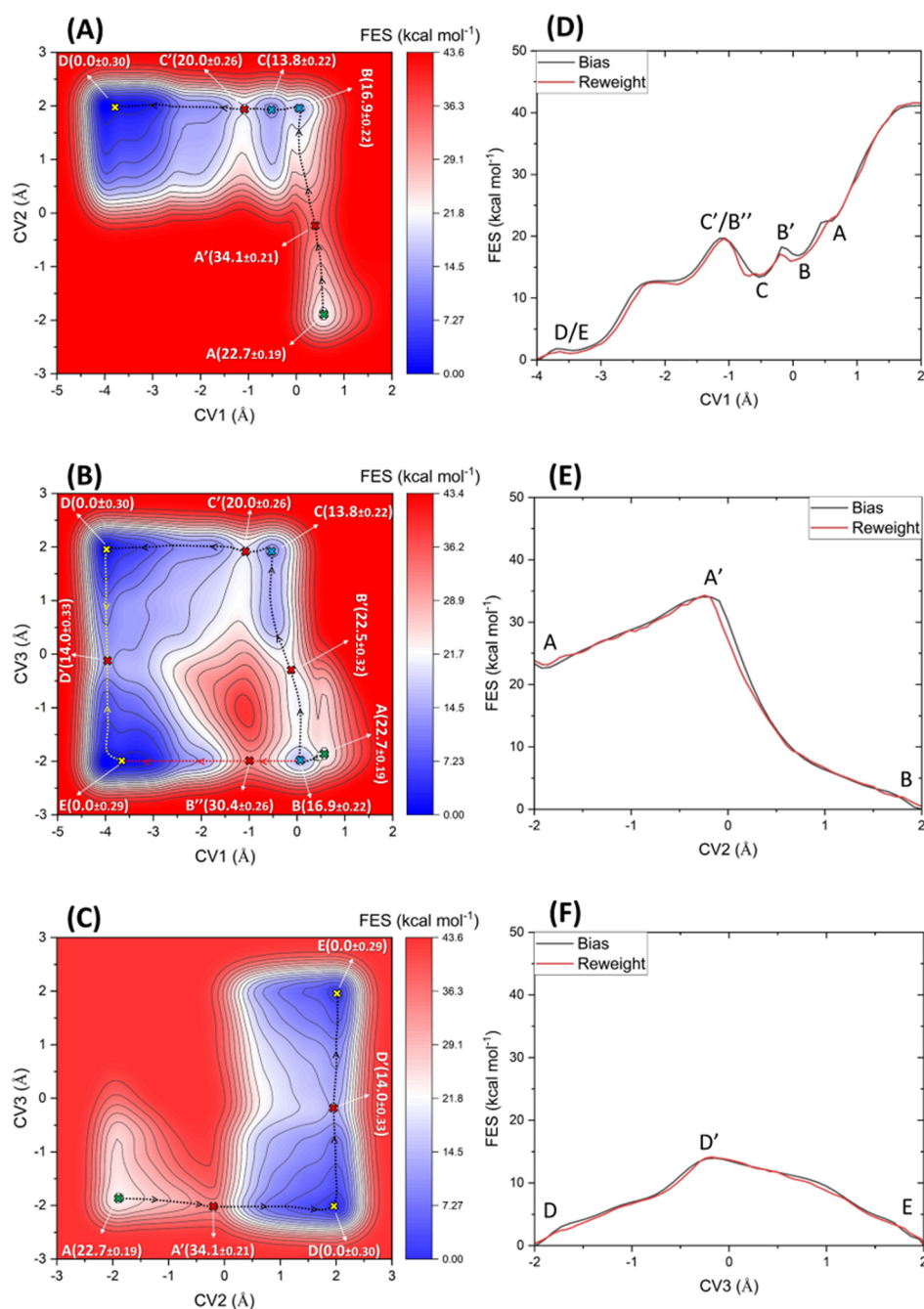
From the second half of the unrestrained MD simulation where the complex is fully relaxed and equilibrated, a plausible conformation was identified to be used as an initial structure in the subsequent QM/MM WT-MetaD simulation. A conformation was chosen in which the d4 and d6 distances (Figure 2C) were simultaneously below 5 Å. Table 2 lists the atomic distances of the selected structure from the MD simulation trajectory.

**QM/MM WT-MetaD.** Figure 6A–C shows the 2D projected free energy surface (FES) contour maps for CV1/CV2, CV1/CV3, and CV2/CV3, respectively. The CV coordinates of the reactant structure (after minimization and equilibration steps), products, local minima, and saddle points are highlighted by green, yellow, blue, and red crosses, respectively. The minimum free energy paths (MEP) are shown as dashed lines. As Figure 6 shows, the initial structure, point A, was located at a local minimum with CV1 = 0.57 Å, CV2 = –1.88 Å, and CV3 = –1.86 Å, hereafter labeled as A (0.57, –1.88, –1.86). Moving along the MEP from points A (0.57, –1.88, –1.86) to B (0.05, 1.96, –1.98), Figure 6A corresponds to the proton transfer from the nucleophile O2' atom to the Ne atom of GB H910. This activates the nucleophilic attack on the SP atom, leading to the formation of a pentavalent dianionic phosphate intermediate (point B). This reaction requires passing through a transition state, point A' (0.39, –0.18, –2.00), with an activation energy of 11.4 ± 0.21 kcal mol<sup>–1</sup>. As Table 2 shows, the interatomic distance d1 decreases from 2.23 Å in point A to 2.09 Å in point A' and 1.77 Å in point B, while d2 increases from 1.66 Å → 1.70 Å → 1.72 Å in points A, A', and B, respectively. The transition state A' is thus located intermediately along the proton transfer and nucleophile activation pathway. For d3 and d4, which are involved in this pathway, the transition structure A' lies very early for the breakage of the O2'–H bond where d3 increases from 1.00 Å (point A) to 1.15 (point A') and 2.99 (point B), while for d4, i.e., the protonation of Ne, A' is a very late TS in that d4 decreases from 2.88 to 1.33 Å to 1.03 Å in points A, A', and B, respectively.

Moving along the MEP (black dashed line) from points B (0.05, 1.96, –1.98) to C (–0.51, 1.95, 1.95) involves proton transfer from the hydroxyl group of GA Y892 to the ready-to-leave OS' atom. This proton transfer reaction passes through a transition state, point B' (–0.13, 1.95, –0.27) with an activation energy of 5.6 ± 0.32 kcal mol<sup>–1</sup>. The corresponding

distance d5 increases from 1.05 Å (point B) to 1.22 Å (point B') to 2.98 Å (point C), indicative of an early transition state. At the acceptor end, d6 (H–OS') decreases from 3.03 Å → 1.49 Å → 1.03 Å in points B, B', and C, respectively. Concomitant with this proton transfer, the pentavalent phosphate intermediate structure breaks, giving the O2'–SP–O3' cyclic intermediate. The O2'–SP interatomic distance d1 thereby decreases from 1.77 Å in point B and 1.65 Å in point B' and 1.66 Å in point C, while d2 (SP–OS') increases from 1.72 to 1.78 Å to 2.17 Å in points B, B', and C, respectively. While the OS' atom in point C is fully protonated, it still has a weak interaction with the SP atom. The protonated OS' atom in point C decouples from the dianionic phosphate group by passing through a transition state C' (–1.1, 1.95, 1.92) (Figure 4A) with an activation energy of 6.2 ± 0.26 kcal mol<sup>–1</sup> to reach one of the products, point D (–3.85, 2.02, 2.00), where the GA is deprotonated. This reaction is associated with the elongation of the interatomic distance d2 from 2.17 Å → 2.74 Å → 5.51 Å in points C, C', and D, respectively.

As Figures 6B and 7A illustrate, there is an alternative reaction path (red dashed line) where the XBPI mRNA cleavage proceeds without direct contribution of GA in the proton transfer to the leaving OS' atom. This alternative starts from the local minimum point B (0.05, 1.96, –1.98), passes through a transition state, point B'' (–0.97, 1.99, –1.96), with activation energy 13.5 ± 0.26 kcal mol<sup>–1</sup>, and reaches the other product, point E (–3.71, 1.97, –2.00). During this process, the interatomic distance d1 (O2'–SP) decreases from 1.77 Å in point B to 1.67 Å in point B'' and 1.66 Å in point E, while the SP–OS' distance d2 increases from 1.72 to 2.64 Å to 5.37 Å in points B, B'', and E, respectively. The main reaction path (black dashed line in Figure 4B) is more favorable compared to the alternative one since the first activation energy of the main reaction path (B to B', 5.6 ± 0.32 kcal mol<sup>–1</sup>) is significantly lower than that of the alternative path (B to B'', 13.5 ± 0.26 kcal mol<sup>–1</sup>) (Figure 5B). The end-point products from each reaction path (points E and D) are connected through a proton transfer reaction between Y892 and OS' which requires passing through a transition state, point D' (–3.91, 1.96, –0.15), with an activation energy of 14.0 ± 0.33 kcal mol<sup>–1</sup>. The main indicators for this conversion reaction are interatomic distances d5 and d6, where d5 decreases from 3.03 Å in point D to 1.16 Å in point D' and 1.05 Å in point E, while d6 increases from 1.03 to 1.31 Å to 3.06 Å in points D, D', and E, respectively.

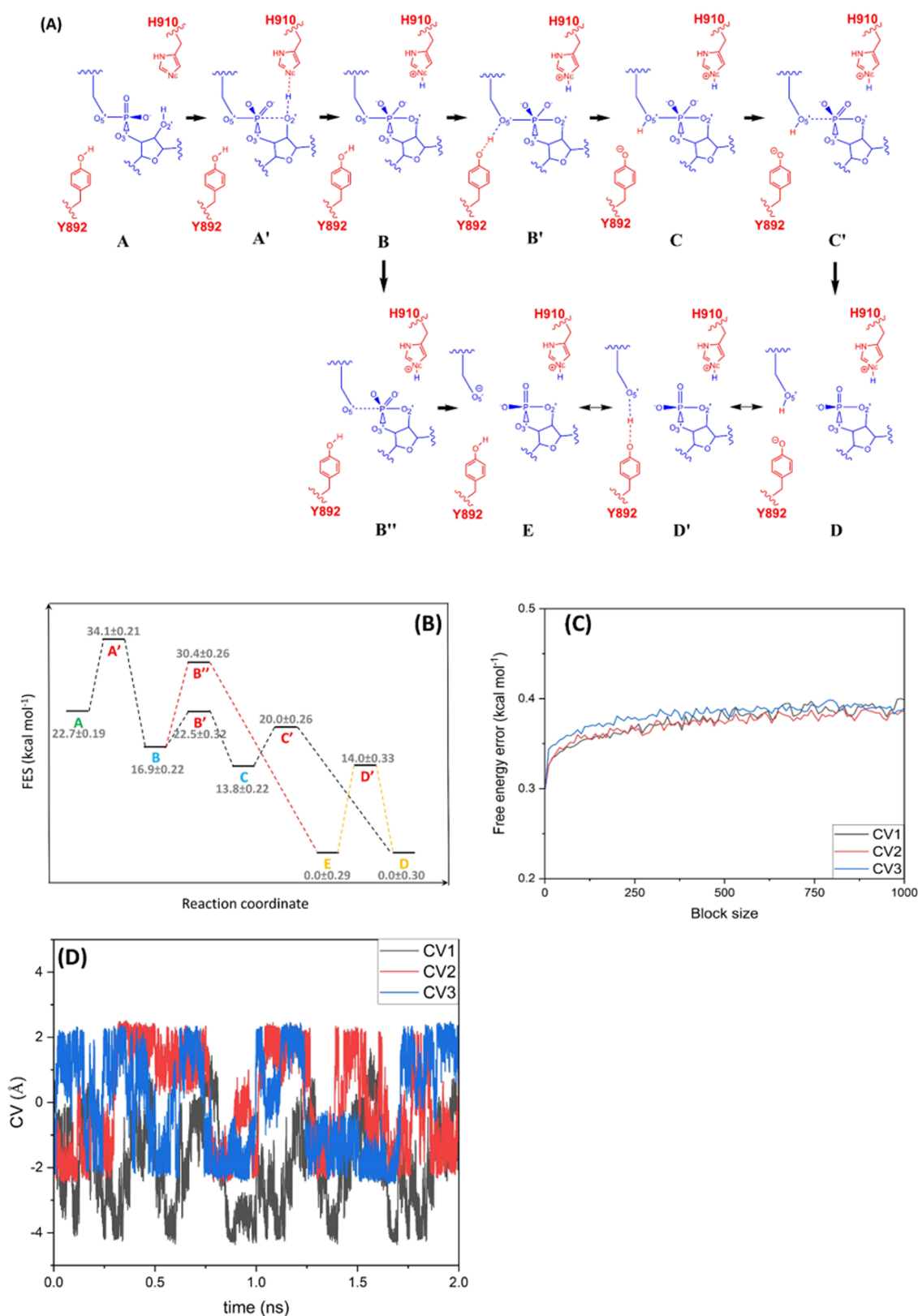


**Figure 6.** 2D projected free energy surface (FES) contour map of (A) CV1/CV2, (B) CV1/CV3, and (C) CV2/CV3. In each panel, the CV coordinates of the reactant structure (after classical minimization and equilibration steps), products, local minima, and saddle points are highlighted by green, yellow, blue, and red crosses, respectively. The main and alternative reaction paths are shown by black and red dashed lines, respectively. The numbers within the parentheses indicate the relative free energy values at each point. 1D projected free energy profiles of (D) CV1, (E) CV2, and (F) CV3, calculated from the negative of the cumulative biasing potential (black line) compared with those obtained by the reweighting technique (red line).

The results clearly show that the first stage of the XBP1 cleavage reaction (points A to B), i.e., activation of the nucleophile O2' atom after proton transfer to the GB, nucleophilic attack to the SP atom, and formation of the dianionic pentavalent phosphate, is an essential step in both main and alternative reaction paths. From point B, the reaction can proceed through two different paths as outlined above. In the main reaction path with a lower activation energy (black dashed line in Figure 4B), Y892 as GA directly contributes to the reaction by donating the proton to the leaving OS' atom,

while in the alternative path (red dashed line), Y892 does not contribute directly to the cleavage reaction and stays protonated (Figure 5A). As Figure 5B indicates, the activation energy of the main reaction path is significantly lower than the alternative pathway, in agreement with the experimental observation that GB mutation of the  $\gamma$ IRE1 RNase reduces the reaction rate by >300,000-fold while the GA mutation only reduces the reaction rate by  $\sim$ 10-fold.<sup>4</sup>

To the best of our knowledge, this work is the first *in silico* study ascertaining that a Tyrosine residue can be considered as



**Figure 7.** (A) Unconventional cleavage mechanism of mRNA XBP1 by IRE1 elucidated from QM/MM WT-MetaD simulations. The IRE1 and XBP1 atoms involved in the catalytic reaction are shown in red and blue, respectively. (B) Relative free energy diagram of the reactant, products, intermediates, and transition states. (C) Error in free energy estimation for each CV calculated by the block-average technique. (D) Diffusive behavior of the CV sampling during the simulation trajectory.

GA in the catalytic reaction mechanism of an RNase enzyme, which successfully confirms the experimental IRE1 muta-

genesis data.<sup>4</sup> However, the contribution of a Tyrosine residue as a potential proton-donor entity (GA) has previously been

suggested experimentally in the catalytic activity of HigB toxin RNase.<sup>64</sup> The  $pK_a$  value of a solvent-exposed tyrosine residue is typically  $\sim 10$ , and therefore, to contribute as a GA at neutral pH, the  $pK_a$  would need to be perturbed. One possible explanation is that the local microenvironment of the IRE1 dimer bound to the XBP1 mRNA alters the  $pK_a$  of Tyr892, making it more suitable to function as a proton donor. Evidence for this includes the protein Ketosteroid isomerase where the  $pK_a$  of an active site tyrosine residue is perturbed to  $\sim 6$ .<sup>65</sup> Another possibility is based on the fact that the  $pK_a$  of the oxyanion leaving group (O5' atom) is much higher than the tyrosine side chain. The accumulated negative charge on the oxyanion leaving group could promote proton donation by Tyr892.<sup>64</sup>

The reweighting technique of Bonomi et al.<sup>66</sup> was applied to the simulation trajectory as a convergence test and error estimation method by comparing the free energy profiles of each CV obtained from the negative of the cumulative biasing potential with those evaluated by the reweighting technique. The results are shown in Figure 6D–F. As shown, the 1D free energy profiles of the CVs obtained from the two approaches are very consistent. The average unsigned errors between the points are 0.36, 0.37, and 0.35 kcal mol<sup>-1</sup> for CV1, CV2, and CV3, respectively, which can be related to the finite-length simulation.<sup>67</sup> Moreover, block-average analysis<sup>68,69</sup> was used to further assess the convergence of the simulations and the associated statistical errors. In the block-average analysis technique, the simulation trajectory is divided into a set of blocks with equal lengths. The error in the free energy estimation can be calculated by comparing the average free energy values from each block. When the number of blocks is large enough, the average error should not be time correlated. Figure 7C illustrates the block-average analysis results for three CVs with 1000 blocks. As Figure 7C shows, the errors in free energy estimation for all three CVs are perfectly converged to a value less than 0.4 kcal mol<sup>-1</sup> which is in agreement with the results obtained from the reweighting technique mentioned above. The results from the reweighting scheme (Figure 6D–F) along with those from block-average analysis technique (Figure 7C) and the diffusive behavior of the CV sampling (Figure 7D) clearly confirm that the QM/MM WT-MetaD simulation has fully converged after 2 ns.

**Previous Studies on Relevant Systems.** RNase enzymes can generally be categorized into two main classes:<sup>70</sup> metal ion dependent and independent. Metal ion-independent RNase enzymes (like IRE1) produce RNA fragments with 2',3'-cyclic phosphates, whereas metal ion-dependent enzymes do not. While the catalytic reaction mechanisms of metal ion-dependent and metal ion-independent RNase are totally different, they can also differ substantially within each class. Many of these reaction mechanisms (mainly for metal ion-independent RNases) have been evaluated and confirmed by *in silico* methods. In this section, we review previous studies on similar systems leading to catalytic cleavage of RNA molecules by RNase enzymes and compare the results.

Mlynsky et al.<sup>71</sup> conducted a benchmarking study on the performances of different computational techniques, including post Hartree–Fock *ab initio* (MP2), DFT (BLYP and MPW1K), and semiempirical (AM1 and DFTBPR), in determining the catalytic mechanism of hairpin ribozyme cleavage in the context of a GA–GB reaction. The main aspect of their work was to generate the potential energy surface (PES) of the reaction by scanning the relevant bonds breaking

and forming during the cleavage reaction using different computational techniques. The PES profiles indicated that MP2 and DFT methods estimate a maximum activation energy of 10–18 kcal mol<sup>-1</sup> which is in agreement with the maximum activation energies calculated in this study (11–14 kcal mol<sup>-1</sup>). On the other hand, semiempirical techniques yielded a relatively high activation energy ( $\sim 32$  kcal mol<sup>-1</sup>) on the PES profile. However, the authors also conducted a QM/MM MD simulation at the semiempirical AM1 level of theory and umbrella sampling to generate a free energy surface (FES) profile instead of PES, which resulted in a more reasonable activation energy (18 kcal mol<sup>-1</sup>) consistent with the data obtained by the MP2 and DFT techniques. It shows that an FES profile from QM/MM MD simulations is more accurate and reliable than a PES profile from a simple scanning calculations, at least for semiempirical techniques. It is worth mentioning that MP2 and DFT QM/MM MD simulations were not evaluated because of the very demanding computational requirements.

Elsässer et al.<sup>72</sup> evaluated the RNA cleavage mechanism of metal ion-independent enzyme “RNase A” by means of QM/MM techniques (B3LYP/AMBER99). Their results showed a low energy barrier (7.5–10 kcal mol<sup>-1</sup>) in which one His residue facilitates the activation of the nucleophile while another His residue acts as GA and protonates the leaving group. The catalytic mechanism of RNA cleavage by “RNase H” has been studied by Rosta et al.<sup>73</sup> using QM/MM with DFT (B3LYP) and the CHARMM force field. Based on their findings, a deprotonated water molecule mediated by phosphate/Mg<sup>2+</sup> acts as the nucleophile while a protonated Asp residue protonates the leaving group. The overall reaction barrier was estimated to 15 kcal mol<sup>-1</sup>. Casalino et al.<sup>74</sup> employed DFT (B3LYP/BLYP) and the Amber ff12SB force field to conduct a series of QM/MM MD simulations in combination with thermodynamic integration to reveal the atomistic details behind the cleavage mechanism of Group II introns ribozymes. They showed that the energy barrier of the rate-determining step is 18.8 kcal mol<sup>-1</sup>, in line with the experimental catalytic rate. Casalino et al.<sup>75</sup> evaluated the catalytic mechanism of nontarget DNA cleavage using QM/MM MD simulations with DFT (BLYP) and the Amber ff12SB force field. They obtained an activation barrier energy of 15.5 kcal mol<sup>-1</sup> for the rate-determining step, in agreement with experimental data. Using DFT (B3LYP) and CHARMM 27 force field, Dürr et al.<sup>76</sup> conducted a series of extensive QM/MM calculations combined with Hamiltonian replica exchange to elucidate the RNA cleavage mechanism of HIV-1 “RNase H”. They found an overall reaction barrier of  $\sim 19$  kcal mol<sup>-1</sup>, associated with the phosphate-cleavage step, which matches the experimental rate. Drusin et al.<sup>77</sup> studied the cleavage mechanism of dsRNA by bacterial “RNase III” through QM/MM MD simulations using semiempirical DFTB and the AMBER14 force field. They concluded that the energy barrier associated with this cleavage mechanism is  $\sim 15$  kcal mol<sup>-1</sup>. Boršek and Magistrato<sup>78</sup> employed a QM/MM MD simulation (BLYP/AMBER-ff14SB) in the context of the blue moon ensemble method to study RNA catalysis in the exon-ligation step of the Spliceosome. Their results unveiled that the catalytic reaction occurs via an associative two-Mg<sup>2+</sup> ion mechanism in which the scissile phosphate mediates a proton transfer from the nucleophile to the leaving group with a free energy barrier of 14.9 kcal mol<sup>-1</sup>.

## CONCLUSIONS

By combining multiscale *in silico* approaches (i.e., RNA modeling, molecular docking, molecular dynamics simulations, and quantum mechanics/molecular mechanics well-tempered metadynamics simulations), the atomic details of the mechanism of XBP1 mRNA cleavage by the IRE1 RNase domain dimer were evaluated. The results show that the cleavage reaction occurs via (a) proton transfer from O2' to the N $\epsilon$  atom of H910 (GB) that activates the nucleophilic attack to the scissile phosphate atom, leading to the formation of the pentavalent dianionic phosphate intermediate, (b) subsequent proton transfer from the hydroxyl group of Y892 (GA) to the ready-to-leave O5' atom, and (c) formation of the product. In agreement with experimental evidence, an alternative reaction path with significantly higher activation energy can also take place (i.e., 13.5 kcal mol<sup>-1</sup> compared to 5.6 kcal mol<sup>-1</sup> for the main reaction path), in which XBP1 mRNA cleavage proceeds without direct contribution of the GA in the proton transfer to the leaving O5' atom. This explains why mutation of the GA does not block the IRE1 RNase activity but reduces the reaction rate by  $\sim$ 10-fold. In addition, the state-of-the-art molecular simulations employed in this study clearly explain the effect of the GB in driving the RNA cleavage reaction by forming hydrogen bonds with O2' and its capability of proton acceptance from the O2' atom. H910 is shown to be a key actor of the RNA cleavage, rationalizing the lack of IRE1 activity in the presence of GB mutation. The findings of the current study provide further advances in our understanding of the cleavage mechanism of XBP1 mRNA by IRE1 RNase and shed further light on UPR signaling.

## DATA AVAILABILITY

The structures of the protein–RNA docked complexes, MD trajectory files, QM/MM WT–MetaD trajectory, and a high resolution video showing how the XBP1 mRNA cleavage takes place during QM/MM WT–MetaD simulation are provided as tarballs (.tar.gz) freely accessible at <https://zenodo.org/record/6457767> (DOI: 10.5281/zenodo.6457767).

## ASSOCIATED CONTENT

### Supporting Information

The Supporting Information is available free of charge at <https://pubs.acs.org/doi/10.1021/acs.jcim.2c00735>.

Video showing how the XBP1 mRNA cleavage takes place during the QM/MM WT–MetaD simulation (MPG)

## AUTHOR INFORMATION

### Corresponding Author

Leif A. Eriksson – Department of Chemistry and Molecular Biology, University of Gothenburg, 405 30 Göteborg, Sweden; [orcid.org/0000-0001-5654-3109](https://orcid.org/0000-0001-5654-3109); Email: [leif.eriksson@chem.gu.se](mailto:leif.eriksson@chem.gu.se)

### Authors

Sayyed Jalil Mahdizadeh – Department of Chemistry and Molecular Biology, University of Gothenburg, 405 30 Göteborg, Sweden; [orcid.org/0000-0002-4844-6234](https://orcid.org/0000-0002-4844-6234)

Emil Pålsson – Department of Chemistry and Molecular Biology, University of Gothenburg, 405 30 Göteborg, Sweden

Antonio Carlesso – Department of Chemistry and Molecular Biology and Department of Pharmacology, Sahlgrenska

Academy, University of Gothenburg, 405 30 Göteborg, Sweden; Faculty of Biomedical Sciences, Euler Institute, Università della Svizzera Italiana (USI), Lugano 6904, Switzerland

Eric Chevet – INSERM U1242, University of Rennes 1, 35000 Rennes, France; Centre Eugene Marquis, 35000 Rennes, France; [orcid.org/0000-0001-5855-4522](https://orcid.org/0000-0001-5855-4522)

Complete contact information is available at:

<https://pubs.acs.org/10.1021/acs.jcim.2c00735>

## Author Contributions

Conceptualization: S.J.M., E.C., A.C., and L.A.E. Formal analysis: S.J.M., A.C., and E.P. Funding acquisition: L.A.E. Methodology: S.J.M., A.C., and L.A.E. Writing—original draft: S.J.M., A.C., and E.P. Writing—review and editing: S.J.M., A.C., E.P., E.C., and L.A.E.

## Notes

The authors declare the following competing financial interest(s): L.A.E. and E.C. are cofounders of Cell Stress Discoveries, Ltd. E.C. is cofounder of Thabor Therapeutics.

## ACKNOWLEDGMENTS

Funding from the Vinnova Seal-of-Excellence program 2019-02205 (CaTheDRA) is gratefully acknowledged (S.J.M.). Elisabeth and Alfred Ahlqvists Foundation (AC), the Faculty of Science at the University of Gothenburg, the Swedish Science Research Council (VR; grant number 2019-3684; LAE). and the Swedish Cancer Foundation (grant number 21-1447-Pj; LAE) are also gratefully acknowledged for funding. The authors thank the Swedish National Infrastructure for Computing for generous allocations of computing time at supercomputing centers C3SE, NSC, and PDC, in part funded by the Swedish Research Council through grant agreement no. 2018-05973.

## REFERENCES

- Almanza, A.; Carlesso, A.; Chinthia, C.; Creedican, S.; Doultinos, D.; Leuzzi, B.; Luis, A.; McCarthy, N.; Montibeller, L.; More, S.; Papaioannou, A.; Puschel, F.; Sassano, M. L.; Skoko, J.; Agostinis, P.; de Bellerocche, J.; Eriksson, L. A.; Fulda, S.; Gorman, A. M.; Healy, S.; Kozlov, A.; Munoz-Pinedo, C.; Rehm, M.; Chevet, E.; Samali, A. Endoplasmic Reticulum Stress Signalling—from Basic Mechanisms to Clinical Applications. *FEBS journal* **2019**, *286*, 241–278.
- Wang, M.; Kaufman, R. J. Protein Misfolding in the Endoplasmic Reticulum as a Conduit to Human Disease. *Nature* **2016**, *529*, 326–335.
- Korennykh, A. V.; Egea, P. F.; Korostelev, A. A.; Finer-Moore, J.; Zhang, C.; Shokat, K. M.; Stroud, R. M.; Walter, P. The Unfolded Protein Response Signals through High-Order Assembly of Ire1. *Nature* **2009**, *457*, 687–693.
- Korennykh, A. V.; Korostelev, A. A.; Egea, P. F.; Finer-Moore, J.; Stroud, R. M.; Zhang, C.; Shokat, K. M.; Walter, P. Structural and Functional Basis for RNA Cleavage by Ire1. *BMC biology* **2011**, *9*, 1–15.
- Bertolotti, A.; Zhang, Y.; Hendershot, L. M.; Harding, H. P.; Ron, D. Dynamic Interaction of Bip and ER Stress Transducers in the Unfolded-Protein Response. *Nature cell biology* **2000**, *2*, 326–332.
- Zhou, J.; Liu, C. Y.; Back, S. H.; Clark, R. L.; Peisach, D.; Xu, Z.; Kaufman, R. J. The Crystal Structure of Human IRE1 Luminal Domain Reveals a Conserved Dimerization Interface Required for Activation of the Unfolded Protein Response. *Proc. Natl. Acad. Sci. U. S. A.* **2006**, *103*, 14343–14348.
- Credle, J. J.; Finer-Moore, J. S.; Papa, F. R.; Stroud, R. M.; Walter, P. On the Mechanism of Sensing Unfolded Protein in the

- Endoplasmic Reticulum. *Proc. Natl. Acad. Sci. U. S. A.* **2005**, *102*, 18773–18784.
- (8) Concha, N. O.; Smallwood, A.; Bonnette, W.; Totoritis, R.; Zhang, G.; Federowicz, K.; Yang, J.; Qi, H.; Chen, S.; Campobasso, N.; Choudhry, A. E.; Shuster, L. E.; Evans, K. A.; Ralph, J.; Sweitzer, S.; Heering, D. A.; Buser, C. A.; Su, D.-S.; DeYoung, M. P. Long-Range Inhibitor-Induced Conformational Regulation of Human IRE1 $\alpha$  Endoribonuclease Activity. *Molecular pharmacology* **2015**, *88*, 1011–1023.
- (9) Peschek, J.; Acosta-Alvear, D.; Mendez, A. S.; Walter, P. A Conformational RNA Zipper Promotes Intron Ejection During Non-Conventional Xbp1 mRNA Splicing. *EMBO reports* **2015**, *16*, 1688–1698.
- (10) Hooks, K. B.; Griffiths-Jones, S. Conserved RNA Structures in the Non-Canonical Hac1/Xbp1 Intron. *RNA biology* **2011**, *8*, 552–556.
- (11) Raines, R. T. Ribonuclease A. *Chem. Rev.* **1998**, *98*, 1045–1066.
- (12) Schertler, G. F.; Villa, C.; Henderson, R. Projection Structure of Rhodopsin. *Nature* **1993**, *362*, 770–772.
- (13) Panov, K. I.; Kolbanovskaya, E. Y.; Okorokov, A. L.; Panova, T. B.; Terwisscha van Scheltinga, A. C.; Karpeisky, M. Y.; Beintema, J. J. Ribonuclease A Mutant His119Asn: The Role of Histidine in Catalysis. *FEBS letters* **1996**, *398*, 57–60.
- (14) Weickmann, J. L.; Olson, E. M.; Glitz, D. G. Immunological Assay of Pancreatic Ribonuclease in Serum as an Indicator of Pancreatic Cancer. *Cancer Res.* **1984**, *44*, 1682–1687.
- (15) Madhavi Sastry, G.; Adzhigirey, M.; Day, T.; Annabhimoju, R.; Sherman, W. Protein and Ligand Preparation: Parameters, Protocols, and Influence on Virtual Screening Enrichments. *Journal of computer-aided molecular design* **2013**, *27*, 221–234.
- (16) Jacobson, M. P.; Pincus, D. L.; Rapp, C. S.; Day, T. J.; Honig, B.; Shaw, D. E.; Friesner, R. A. A Hierarchical Approach to All-Atom Protein Loop Prediction. *Proteins: Struct., Funct., Bioinf.* **2004**, *55*, 351–367.
- (17) Jacobson, M. P.; Friesner, R. A.; Xiang, Z.; Honig, B. On the Role of the Crystal Environment in Determining Protein Side-Chain Conformations. *Journal of molecular biology* **2002**, *320*, 597–608.
- (18) Lu, C.; Wu, C.; Ghoreishi, D.; Chen, W.; Wang, L.; Damm, W.; Ross, G. A.; Dahlgren, M. K.; Russell, E.; Von Bargen, C. D.; Abel, R.; Friesner, R. A.; Harder, E. D. OPLS4: Improving Force Field Accuracy on Challenging Regimes of Chemical Space. *J. Chem. Theory Comput.* **2021**, *17*, 4291–4300.
- (19) Chimmaronk, S.; Forouhar, F.; Sakai, J.; Yao, M.; Tron, C. M.; Atta, M.; Fontecave, M.; Hunt, J. F.; Tanaka, I. Snapshots of Dynamics in Synthesizing N<sup>6</sup>-Isopentenyladenosine at the tRNA Anticodon. *Biochemistry* **2009**, *48*, 5057–5065.
- (20) Rallapalli, K. L.; Komor, A. C.; Paesani, F. Computer Simulations Explain Mutation-Induced Effects on the DNA Editing by Adenine Base Editors. *Science advances* **2020**, *6*, eaz2309.
- (21) Pettersen, E. F.; Goddard, T. D.; Huang, C. C.; Couch, G. S.; Greenblatt, D. M.; Meng, E. C.; Ferrin, T. E. UCSF Chimera—a Visualization System for Exploratory Research and Analysis. *Journal of computational chemistry* **2004**, *25*, 1605–1612.
- (22) Yan, Y.; Zhang, D.; Zhou, P.; Li, B.; Huang, S.-Y. Hdock: A Web Server for Protein–Protein and Protein–DNA/RNA Docking Based on a Hybrid Strategy. *Nucleic acids research* **2017**, *45*, W365–W373.
- (23) Bowers, K. J.; Chow, D. E.; Xu, H.; Dror, R. O.; Eastwood, M. P.; Gregersen, B. A.; Klepeis, J. L.; Kolossvary, I.; Moraes, M. A.; Sacerdoti, F. D. Scalable Algorithms for Molecular Dynamics Simulations on Commodity Clusters. In *SC'06: Proceedings of the 2006 ACM/IEEE Conference on Supercomputing*; IEEE, 2006; pp 43–43.
- (24) Jorgensen, W. L.; Chandrasekhar, J.; Madura, J. D.; Impey, R. W.; Klein, M. L. Comparison of Simple Potential Functions for Simulating Liquid Water. *J. Chem. Phys.* **1983**, *79*, 926–935.
- (25) Rozov, A.; Khusainov, I.; El Omari, K.; Duman, R.; Mykhaylyk, V.; Yusupov, M.; Westhof, E.; Wagner, A.; Yusupova, G. Importance of Potassium Ions for Ribosome Structure and Function Revealed by Long-Wavelength X-Ray Diffraction. *Nat. Commun.* **2019**, *10*, 1–12.
- (26) Fischer, N. M.; Pol $\acute{e}$ to, M. D.; Steuer, J.; van der Spoel, D. Influence of Na<sup>+</sup> and Mg<sup>2+</sup> Ions on RNA Structures Studied with Molecular Dynamics Simulations. *Nucleic acids research* **2018**, *46*, 4872–4882.
- (27) Martyna, G. J.; Klein, M. L.; Tuckerman, M. Nos $\acute{e}$ –Hoover Chains: The Canonical Ensemble Via Continuous Dynamics. *J. Chem. Phys.* **1992**, *97*, 2635–2643.
- (28) Wentzcovitch, R. M. Invariant Molecular-Dynamics Approach to Structural Phase Transitions. *Phys. Rev. B* **1991**, *44*, 2358.
- (29) Darden, T.; York, D.; Pedersen, L. Particle Mesh Ewald: An N-Log (N) Method for Ewald Sums in Large Systems. *J. Chem. Phys.* **1993**, *98*, 10089–10092.
- (30) Essmann, U.; Perera, L.; Berkowitz, M. L.; Darden, T.; Lee, H.; Pedersen, L. G. A Smooth Particle Mesh Ewald Method. *J. Chem. Phys.* **1995**, *103*, 8577–8593.
- (31) Ryckaert, J.-P.; Ciccotti, G.; Berendsen, H. J. Numerical Integration of the Cartesian Equations of Motion of a System with Constraints: Molecular Dynamics of N-Alkanes. *J. Comput. Phys.* **1977**, *23*, 327–341.
- (32) Hutter, J.; Iannuzzi, M.; Schiffmann, F.; VandeVondele, J. CP2K: Atomistic Simulations of Condensed Matter Systems. *Wiley Interdisciplinary Reviews: Computational Molecular Science* **2014**, *4*, 15–25.
- (33) Kuhne, T. D.; Iannuzzi, M.; Del Ben, M.; Rybkin, V. V.; Seewald, P.; Stein, F.; Laino, T.; Khaliullin, R. Z.; Schutt, O.; Schiffmann, F.; Golze, D.; Wilhelm, J.; Chulkov, S.; Bani-Hashemian, M. H.; Weber, V.; Borstnik, U.; TAILLEFUMIER, M.; Jakobovits, A. S.; Lazzaro, A.; Pabst, H.; Muller, T.; Schade, R.; Guidon, M.; Andermatt, S.; Holmberg, N.; Schenter, G. K.; Hehn, A.; Bussy, A.; Belleflamme, F.; Tabacchi, G.; Gloss, A.; Lass, M.; Bethune, I.; Mundy, C. J.; Plessl, C.; Watkins, M.; VandeVondele, J.; Krack, M.; Hutter, J. CP2K: An Electronic Structure and Molecular Dynamics Software Package-Quickstep: Efficient and Accurate Electronic Structure Calculations. *J. Chem. Phys.* **2020**, *152*, 194103.
- (34) Tribello, G. A.; Bonomi, M.; Branduardi, D.; Camilloni, C.; Bussi, G. Plumed 2: New Feathers for an Old Bird. *Computer Phys. Commun.* **2014**, *185*, 604–613.
- (35) Bonomi, M.; Branduardi, D.; Bussi, G.; Camilloni, C.; Provasi, D.; Raiteri, P.; Donadio, D.; Marinelli, F.; Pietrucci, F.; Broglia, R. A.; Parrinello, M. Plumed: A Portable Plugin for Free-Energy Calculations with Molecular Dynamics. *Comput. Phys. Commun.* **2009**, *180*, 1961–1972.
- (36) Maseras, F.; Morokuma, K. Imom: A New Integrated Ab Initio + Molecular Mechanics Geometry Optimization Scheme of Equilibrium Structures and Transition States. *J. Comput. Chem.* **1995**, *16*, 1170–1179.
- (37) Stephens, P. J.; Devlin, F. J.; Chabalowski, C. F.; Frisch, M. J. Ab Initio Calculation of Vibrational Absorption and Circular Dichroism Spectra Using Density Functional Force Fields. *J. Phys. Chem.* **1994**, *98*, 11623–11627.
- (38) Grimme, S.; Ehrlich, S.; Goerigk, L. Effect of the Damping Function in Dispersion Corrected Density Functional Theory. *Journal of computational chemistry* **2011**, *32*, 1456–1465.
- (39) Antony, J.; Grimme, S.; Liakos, D. G.; Neese, F. Protein–Ligand Interaction Energies with Dispersion Corrected Density Functional Theory and High-Level Wave Function Based Methods. *J. Phys. Chem. A* **2011**, *115*, 11210–11220.
- (40) Stewart, J. J. Application of the PM6 Method to Modeling Proteins. *J. Mol. Model.* **2009**, *15*, 765–805.
- (41) Bikadi, Z.; Hazai, E. Application of the PM6 Semi-Empirical Method to Modeling Proteins Enhances Docking Accuracy of Autodock. *Journal of cheminformatics* **2009**, *1*, 1–16.
- (42) Dobes, P.; Rezac, J.; Fanfrlik, J.; Otyepka, M.; Hobza, P. Semiempirical Quantum Mechanical Method PM6-DH2X Describes the Geometry and Energetics of CK2-Inhibitor Complexes Involving Halogen Bonds Well, While the Empirical Potential Fails. *J. Phys. Chem. B* **2011**, *115*, 8581–8589.

- (43) Stewart, J. J. Application of the PM6 Method to Modeling the Solid State. *J. Mol. Model.* **2008**, *14*, 499–535.
- (44) Zhu, Y.; Bao, A.; Na, B.; Su, G.; Wang, J.; Lang, J. A Cyclic Voltammetry and PM6 Semi-Empirical Molecular Orbital Method Study of the Capacity Behaviour of an Aluminum-8-Hydroxyquinoline Complex Modified Carbon Paste Electrode. *RSC Adv.* **2017**, *7*, 3586–3593.
- (45) Correa, A.; Poater, A.; Ragone, F.; Cavallo, L. A Comparison of the Performance of the Semiempirical PM6 Method Versus DFT Methods in Ru-Catalyzed Olefin Metathesis. In *Green Metathesis Chemistry*; Springer, 2010; pp 281–292.
- (46) Amić, D.; Lučić, B. Reliability of Bond Dissociation Enthalpy Calculated by the PM6 Method and Experimental Teac Values in Antiradical QSAR of Flavonoids. *Bioorganic & medicinal chemistry* **2010**, *18*, 28–35.
- (47) Lemm, D.; von Rudorff, G. F.; von Lilienfeld, O. A. Machine Learning Based Energy-Free Structure Predictions of Molecules, Transition States, and Solids. *Nat. Commun.* **2021**, *12*, 1–10.
- (48) Korth, M. Third-Generation Hydrogen-Bonding Corrections for Semiempirical QM Methods and Force Fields. *J. Chem. Theory Comput.* **2010**, *6*, 3808–3816.
- (49) Krasnov, P. O.; Shkaberina, G. S.; Polyutov, S. P. Molecular Hydrogen Sorption Capacity of P216-Schwarzite: PM6-D3, MP2 and QTAIM Approaches. *Comput. Mater. Sci.* **2022**, *209*, 111410.
- (50) Krasnov, P. O.; Shkaberina, G. S.; Kuzubov, A. A.; Kovaleva, E. A. Molecular Hydrogen Sorption Capacity of D-Schwarzites. *Appl. Surf. Sci.* **2017**, *416*, 766–771.
- (51) Head-Gordon, M.; Pople, J. A.; Frisch, M. J. MP2 Energy Evaluation by Direct Methods. *Chemical physics letters* **1988**, *153*, 503–506.
- (52) Chen, J.; Wang, J.; Zhang, Q.; Chen, K.; Zhu, W. A Comparative Study of Trypsin Specificity Based on QM/MM Molecular Dynamics Simulation and QM/MM GBSA Calculation. *J. Biomol. Struct. Dyn.* **2015**, *33*, 2606–2618.
- (53) Silva, D. A.; Xavier, M. J.; Dutra, J. D. L.; Gimenez, I. F.; Freire, R. O.; da Costa, N. B., Jr Prediction of Correct Intermolecular Interactions in Host-Guest Systems Involving Cyclodextrins. *J. Mol. Struct.* **2020**, *1205*, 127517.
- (54) Maier, J. A.; Martinez, C.; Kasavajhala, K.; Wickstrom, L.; Hauser, K. E.; Simmerling, C. Ff14sb: Improving the Accuracy of Protein Side Chain and Backbone Parameters from Ff99sb. *J. Chem. Theory Comput.* **2015**, *11*, 3696–3713.
- (55) Zgarbová, M.; Otyepka, M.; Šponer, J. i.; Mládek, A. t.; Banáš, P.; Cheatham, T. E., III; Jurecka, P. Refinement of the Cornell et al. Nucleic Acids Force Field Based on Reference Quantum Chemical Calculations of Glycosidic Torsion Profiles. *J. Chem. Theory Comput.* **2011**, *7*, 2886–2902.
- (56) Zhu, C.; Byrd, R. H.; Lu, P.; Nocedal, J. Algorithm 778: L-BFGS-B: Fortran Subroutines for Large-Scale Bound-Constrained Optimization. *ACM Transactions on mathematical software (TOMS)* **1997**, *23*, 550–560.
- (57) Bussi, G.; Donadio, D.; Parrinello, M. Canonical Sampling through Velocity Rescaling. *J. Chem. Phys.* **2007**, *126*, 014101.
- (58) Miao, Z.; Westhof, E. Rna Structure: Advances and Assessment of 3D Structure Prediction. *Annual review of biophysics* **2017**, *46*, 483–503.
- (59) Yang, W. Nucleases: Diversity of Structure, Function and Mechanism. *Q. Rev. Biophys.* **2011**, *44*, 1–93.
- (60) Krepl, M.; Havrila, M.; Stadlbauer, P.; Banas, P.; Otyepka, M.; Pasulka, J.; Stefl, R.; Sponer, J. Can We Execute Stable Microsecond-Scale Atomistic Simulations of Protein–RNA Complexes? *J. Chem. Theory Comput.* **2015**, *11*, 1220–1243.
- (61) Pokorna, P.; Kruse, H.; Krepl, M.; Sponer, J. QM/MM Calculations on Protein–RNA Complexes: Understanding Limitations of Classical MD Simulations and Search for Reliable Cost-Effective Qm Methods. *J. Chem. Theory Comput.* **2018**, *14*, 5419–5433.
- (62) Henriksen, N. M.; Davis, D. R.; Cheatham, T. E., III Molecular Dynamics Re-Refinement of Two Different Small RNA Loop Structures Using the Original NMR Data Suggest a Common Structure. *Journal of biomolecular NMR* **2012**, *53*, 321–339.
- (63) Rastelli, G.; Rio, A. D.; Degliesposti, G.; Sgobba, M. Fast and Accurate Predictions of Binding Free Energies Using MM-PBSA and MM-GBSA. *Journal of computational chemistry* **2010**, *31*, 797–810.
- (64) Schureck, M. A.; Repack, A.; Miles, S. J.; Marquez, J.; Dunham, C. M. Mechanism of Endonuclease Cleavage by the High Toxin. *Nucleic acids research* **2016**, *44*, 7944–7953.
- (65) Schwans, J. P.; Sunden, F.; Gonzalez, A.; Tsai, Y.; Herschlag, D. Uncovering the Determinants of a Highly Perturbed Tyrosine pK<sub>a</sub> in the Active Site of Ketosteroid Isomerase. *Biochemistry* **2013**, *52*, 7840–7855.
- (66) Bonomi, M.; Barducci, A.; Parrinello, M. Reconstructing the Equilibrium Boltzmann Distribution from Well-Tempered Metadynamics. *Journal of computational chemistry* **2009**, *30*, 1615–1621.
- (67) McGrath, M. J.; Kuo, I.-F. W.; Hayashi, S.; Takada, S. Adenosine Triphosphate Hydrolysis Mechanism in Kinesin Studied by Combined Quantum-Mechanical/Molecular-Mechanical Metadynamics Simulations. *J. Am. Chem. Soc.* **2013**, *135*, 8908–8919.
- (68) Flyvbjerg, H.; Petersen, H. G. Error Estimates on Averages of Correlated Data. *J. Chem. Phys.* **1989**, *91*, 461–466.
- (69) Bussi, G.; Tribello, G. A. Analyzing and Biasing Simulations with Plumed. In *Biomolecular Simulations*; Springer, 2019; pp 529–578.
- (70) Cooper, D. A.; Jha, B. K.; Silverman, R. H.; Hesselberth, J. R.; Barton, D. J. Ribonuclease L and Metal-Ion-Independent Endoribonuclease Cleavage Sites in Host and Viral Rnas. *Nucleic acids research* **2014**, *42*, S202–S216.
- (71) Mlynsky, V.; Banas, P.; Sponer, J.; van der Kamp, M. W.; Mulholland, A. J.; Otyepka, M. Comparison of Ab Initio, DFT, and Semiempirical QM/MM Approaches for Description of Catalytic Mechanism of Hairpin Ribozyme. *J. Chem. Theory Comput.* **2014**, *10*, 1608–1622.
- (72) Elsässer, B.; Fels, G.; Weare, J. H. QM/MM Simulation (B3LYP) of the RNase A Cleavage-Transesterification Reaction Supports a Triester A<sub>N</sub> + D<sub>N</sub> Associative Mechanism with an O2' H Internal Proton Transfer. *J. Am. Chem. Soc.* **2014**, *136*, 927–936.
- (73) Rosta, E.; Nowotny, M.; Yang, W.; Hummer, G. Catalytic Mechanism of RNA Backbone Cleavage by Ribonuclease H from Quantum Mechanics/Molecular Mechanics Simulations. *J. Am. Chem. Soc.* **2011**, *133*, 8934–8941.
- (74) Casalino, L.; Palermo, G.; Rothlisberger, U.; Magistrato, A. Who Activates the Nucleophile in Ribozyme Catalysis? An Answer from the Splicing Mechanism of Group II Introns. *J. Am. Chem. Soc.* **2016**, *138*, 10374–10377.
- (75) Casalino, L.; Nierzwicki, L.; Jinek, M.; Palermo, G. Catalytic Mechanism of Non-Target DNA Cleavage in Crispr-Cas9 Revealed by Ab Initio Molecular Dynamics. *ACS catalysis* **2020**, *10*, 13596–13605.
- (76) Dürr, S. L.; Bohuszewicz, O.; Berta, D.; Suardiaz, R.; Jambrina, P. G.; Peter, C.; Shao, Y.; Rosta, E. The Role of Conserved Residues in the DEDDh Motif: The Proton-Transfer Mechanism of HIV-1 RNase H. *ACS Catal.* **2021**, *11*, 7915–7927.
- (77) Drusin, S. I.; Rasia, R. M.; Moreno, D. M. Study of the Role of Mg<sup>2+</sup> in dsRNA Processing Mechanism by Bacterial RNase III through QM/MM Simulations. *JBIC Journal of Biological Inorganic Chemistry* **2020**, *25*, 89–98.
- (78) Borišek, J.; Magistrato, A. All-Atom Simulations Decrypt the Molecular Terms of RNA Catalysis in the Exon-Ligation Step of the Spliceosome. *ACS Catal.* **2020**, *10*, 5328–5334.