



HAL
open science

Pre-stroke Disability and Long-Term Functional Limitations in Stroke Survivors: Findings From More of 12 Years of Follow-Up Across Three International Surveys of Aging

Andres Gil-Salcedo, Aline Dugravot, Aurore Fayosse, Benjamin Landré, Louis Jacob, Mikaela Bloomberg, Severine Sabia, Alexis Schnitzler

► **To cite this version:**

Andres Gil-Salcedo, Aline Dugravot, Aurore Fayosse, Benjamin Landré, Louis Jacob, et al.. Pre-stroke Disability and Long-Term Functional Limitations in Stroke Survivors: Findings From More of 12 Years of Follow-Up Across Three International Surveys of Aging. *Frontiers in Neurology*, 2022, 13, 10.3389/fneur.2022.888119 . hal-03775087

HAL Id: hal-03775087

<https://hal.science/hal-03775087v1>

Submitted on 6 Jun 2023

HAL is a multi-disciplinary open access archive for the deposit and dissemination of scientific research documents, whether they are published or not. The documents may come from teaching and research institutions in France or abroad, or from public or private research centers.

L'archive ouverte pluridisciplinaire **HAL**, est destinée au dépôt et à la diffusion de documents scientifiques de niveau recherche, publiés ou non, émanant des établissements d'enseignement et de recherche français ou étrangers, des laboratoires publics ou privés.



Distributed under a Creative Commons Attribution 4.0 International License



Pre-stroke Disability and Long-Term Functional Limitations in Stroke Survivors: Findings From More of 12 Years of Follow-Up Across Three International Surveys of Aging

Andres Gil-Salcedo^{1*}, Aline Dugravot¹, Aurore Fayosse¹, Benjamin Landré¹, Louis Jacob^{2,3}, Mikaela Bloomberg⁴, Séverine Sabia¹ and Alexis Schnitzler^{1,5}

¹ Université Paris-Cité, Inserm U1153, Epidemiology of Ageing and Neurodegenerative Diseases, Paris, France, ² Faculty of Medicine, University of Versailles Saint-Quentin-en-Yvelines, Montigny-le-Bretonneux, France, ³ Research and Development Unit, Parc Sanitari Sant Joan de Déu, CIBERSAM, Barcelona, Spain, ⁴ Department of Epidemiology and Public Health, University College London, London, United Kingdom, ⁵ Université Versailles Saint Quentin en Yvelines, EA 4047 Handi-Resp, Service de neurologie hôpital A. Mignot, Garches, France

OPEN ACCESS

Edited by:

Jean-Claude Baron,
University of Cambridge,
United Kingdom

Reviewed by:

Birgitta Langhammer,
Oslo Metropolitan University, Norway
Siobhan Scarlett,
Trinity College Dublin, Ireland

*Correspondence:

Andres Gil-Salcedo
andres.gil-salcedo@inserm.fr

Specialty section:

This article was submitted to
Stroke,
a section of the journal
Frontiers in Neurology

Received: 02 March 2022

Accepted: 23 May 2022

Published: 14 June 2022

Citation:

Gil-Salcedo A, Dugravot A, Fayosse A, Landré B, Jacob L, Bloomberg M, Sabia S and Schnitzler A (2022) Pre-stroke Disability and Long-Term Functional Limitations in Stroke Survivors: Findings From More of 12 Years of Follow-Up Across Three International Surveys of Aging. *Front. Neurol.* 13:888119. doi: 10.3389/fneur.2022.888119

Background: Almost 50% of the post-stroke disabled population already have a premorbid disability before stroke. These patients may be offered a different care pathway in the acute and subacute phase than those without pre-morbid disability. Therefore, the aim of this study was to assess the association of the severity of premorbid disability with change of limitations in basic and instrumental activities of daily living (ADL/IADL) 1 year after stroke and over the following decade.

Methods: Among 3,432 participants from HRS, SHARE and ELSA cohorts with a first stroke, ADL/IADL limitations were measured at 1–2 years prior to stroke, at 1 year post-stroke, and during the chronic phase. Modified Ranking Scale (P-mRS) was used to categorize the participants by level of premorbid disability (1–2 years pre-stroke). Change in ADL/IADL limitations by P-mRS level (0–1, 2–3, and 4–5) was assessed using a piecewise linear mixed model with a breakpoint set at 1 year post-stroke, stratified by median age groups.

Results: Increase in ADL limitations at 1 year post-stroke was less pronounced in P-mRS ≥ 2 ($p < 0.005$). After years of relative stability, limitations of ADL increased for all P-mRS levels ($p = 0.003$). In those aged ≥ 75 years at stroke event, the increase was similar irrespective of P-mRS ($p = 0.090$). There were no significant differences in IADL trajectories between P-mRS levels ($p \geq 0.127$).

Conclusion: These results suggest similar trajectories of functional limitations between P-mRS levels up to 9 years post-stroke, highlighting the possible benefit of including patients with pre-morbid disability to certain treatments during the acute phase.

Keywords: stroke, chronic phase, premorbid disability, functioning, limitation

INTRODUCTION

Stroke is one of the leading causes of long-term disability in the world (1, 2). More than 20% of stroke survivors experience some limitations in activities of daily living (ADL) (3, 4) and 30% experience limitations in instrumental activities of daily living (IADL) (4, 5), with prevalence of limitations increasing with age (6). As populations age (1, 4) and stroke events occur at more advanced ages, some patients have functional limitations before stroke event (premorbid disability). The care pathway for these patients differs during the acute and sub-acute phase compared to those without premorbid disability. In international reports (7, 8) and a previous study (9) it was reported that only 1 out of 10 patients treated with intravenous thrombolysis had a premorbid disability and in one study (10) only 3 out of 10 patients with premorbid disability accessed a full rehabilitation service during acute care following stroke, despite lack of evidence to support such differential treatment (10, 11). These disparities in the care pathway between those with and without premorbid disability might contribute to increase health inequalities between these groups (11, 12).

Long term studies have reported that about 50% of patients with disability after stroke had a premorbid disability (13–15). Studies suggested after stroke, persons with premorbid disability have higher rates of mortality, institutionalization, and healthcare costs (13, 14), higher severity ratios (14, 16) and a lower probability of achieving favorable outcomes (9) compared to those without premorbid disability. As a result, healthcare professionals tend to develop cognitive biases during acute care of patients with premorbid disability (11, 14). In particular, *fragility* refers to the tendency of physicians to assign pessimistic prognoses to patients with premorbid disability (11, 17) and therefore withhold certain treatments.

Most long-term studies so far [with a maximum of 10 years of follow-up in one study (18)] use the premorbid modified Rankin scale (P-mRS) in dichotomous form (no-disability [levels 0–1 or 0–3] vs. disability [levels >2 or >3]) (14, 15). Although the P-mRS has been shown to be a predictor of prognosis in its dichotomous form (15, 19), this scale could provide additional information on the influence of the severity of premorbid disability on the functional outcome of stroke patients if a broader categorization (no disability, mild or moderate disability, and severe disability) was used. In addition, there is no evidence of its impact on change in a more graded disability scale, such as limitations in ADL and IADL (20), following stroke event while differentiating the post-stroke subacute and chronic phases (21).

In order to address these gaps in the literature, we examined the association between premorbid disability severity and ADL/IADL limitations after stroke both 1 year after stroke (after the subacute phase) and in the long term, using data spanning 20 years from three large-scale cohort studies conducted in Europe and the United States.

METHODS

Study Population

The study population was drawn from three related surveys (22) of persons aged over 50 from the United States and Europe: the Health and Retirement Study (HRS) (23), the Survey of Health, Aging and Retirement in Europe (SHARE) (24) and the English Longitudinal Study of Ageing (ELSA) (25). Details of these studies are provided elsewhere (23–25). For the present study, HRS data from 1996 to 2018 (12 waves), SHARE data from 2004 to 2016 (6 waves; no data in 2008), and ELSA data from 2002 to 2018 (9 waves) were used. The study sample included all participants who reported having been diagnosed by a physician as having suffered a stroke from the three studies and with data on limitations and covariates before stroke onset (1–2 years pre-stroke) and at least one wave post-stroke. Participants who reported a prevalent stroke at baseline were excluded because no data prior to stroke were available. Participants with recurrent stroke have different prognosis and care than individuals with a single stroke event (26, 27), and were therefore excluded.

ADL and IADL Limitations and Follow-Up

ADL and IADL data were collected similarly in the three surveys (28). Participants (or proxies) reported whether they had experienced any difficulty with ADLs or IADLs lasting longer than 3 months due to a “physical, mental, emotional or memory problem.” ADLs included dressing, walking across a room, bathing/showering, eating, getting in/out of bed, using the toilet, and urinary continence, leading to an ADL score ranging from 0 to 7 (29). IADLs included using a map, preparing a hot meal, shopping for groceries, using the telephone, taking medications, and managing money, leading to an IADL score ranging from 0 to 6 (30). Scores equal to 0 indicated no limitations and a score of 7 (for ADLs) or 6 (for IADLs) indicated respondents were fully limited. Follow-up of participants started at year of premorbid stroke status (1 or 2 years pre-stroke) and ended at the last wave of ADL/IADL data, using all information available at waves in between. ADL/IADL limitations show important short-term changes during the acute phase (first year post-stroke) (31) and given that data were collected every 2 years, data in the year following stroke were not considered in the analysis.

Premorbid Disability Level

Premorbid disability level was evaluated based on the P-mRS using self-reported limitations at the last wave before stroke, allowing a maximum of 2 years before stroke event. The P-mRS is a scale for determining levels of disability prior to stroke and has been shown to be a strong predictor of prognosis (19). Three levels of P-mRS were estimated using ADLs and IADLs at the last wave before stroke: 0–1 (no symptoms or significant disability: no limitations in ADLs or IADLs); 2–3 (slight-to-moderate disability: some limitations in ADLs and/or IADLs but able to walk across a room); and 4–5 (moderately severe

and severe disability: multiple limitations in ADLs and/or IADLs including an inability to walk across room) (32, 33).

Covariates

Sociodemographic factors included sex, age, education (below secondary, secondary, and above secondary level based on a previously harmonized education category) (34) and marital status (“married or cohabiting” vs. “single, divorced or widowed”) and were drawn from the closest wave before stroke event. Other covariates were drawn concurrently with measures of ADL/IADL limitations at each wave. Health behaviors included smoking status (non-smoking and current smoking), alcohol consumption over the last 6 months [abstainers (<once a month), moderate drinkers (\geq once per month to <5 days/week) and frequent drinkers (\geq 5days/week)], and practice of moderate-to-vigorous physical activity at least three times a week. Body mass index (BMI) was estimated based on self-reported weight and height and categorized as <18.5–25, 25–30, and >30 kg/m². In ELSA information on BMI was available every 2 waves and data were carried forward for missing waves. Morbidities included self-report of medical diagnosis of heart problems, high blood pressure, diabetes, lung diseases, arthritis, cancer, chronic pain, and sleep disorders. The number of morbidities was categorized as 0, 1, 2, or \geq 3.

Statistical Analysis

Characteristics of the population as a function of P-mRS level (0–1, 2–3, and 4–5) at the closest interview before stroke (pre-stroke status) were presented. Pearson’s chi-squared test was used to assess differences between groups in sociodemographic factors, health behaviors, BMI categories, and the number of morbidities. For continuous scores of ADL/IADL limitations, analysis of variance was used to describe differences by P-mRS level groups. In addition, a multivariate logistic model was used to compare participants with “no symptoms or significant disability” (P-mRS 0–1) vs. premorbid disability (P-mRS \geq 2), and stratified by age group (50–74 and \geq 75 years) defined using median age.

Main Analysis

Change in ADL/IADL limitation scores, at 1 year post-stroke and in the long-term, was assessed using piecewise linear mixed models. The origin of the timeline in the analysis was the year of stroke. The start of the timeline was set at 1 year before stroke using data from the last wave before stroke (allowing a maximum of 2 years before stroke event). The next measure included in the analysis was the first in the data assessed after 1 year post-stroke (after subacute phase). The breakpoint in the model was set at 1 year post-stroke to examine change in limitations following the subacute phase. Random effects were included for intercept at survey-level (HRS, SHARE, and ELSA) and intercept and slope at the individual level to account for variations between surveys and individuals. Analysis were adjust sequentially, initially including time, P-mRS level, sociodemographic variables, and year of stroke. Time squared and lower order interactions between covariates and time terms (time, time squared) were included in the model if they were significant based on the likelihood ratio

test. The model was then further adjusted for health behaviors, BMI and number of morbidities as time-dependent variables.

A significant interaction was found between age of stroke as a continuous term and P-mRS both for ADL [both at the intercept ($p < 0.001$) and over time ($p = 0.001$)] and IADL limitations (intercept $p < 0.001$). Exploratory analysis stratified in 6 age bands (**Supplementary Figure 1**) led us to stratify the analysis into two age groups (individuals aged 50–74 years at stroke year and those aged \geq 75 years) using the median age of the sample to ensure sufficient numbers in each group. No further interaction was found within these age groups.

To facilitate interpretation of the results, we plotted the adjusted mean ADL/IADL limitation score as a function of time from stroke event estimated in fully adjusted models with 95% confidence intervals (95%CI). These results were plotted over a period of 16 years for the age group 50–74 years, and 12 years for age group \geq 75 years, representing the maximum period for which the number of participants in each level of P-mRS was at least 5.

All statistical analyses were carried out using STATA statistical software version 15.1 (Stata-Corp, College Station, Texas).

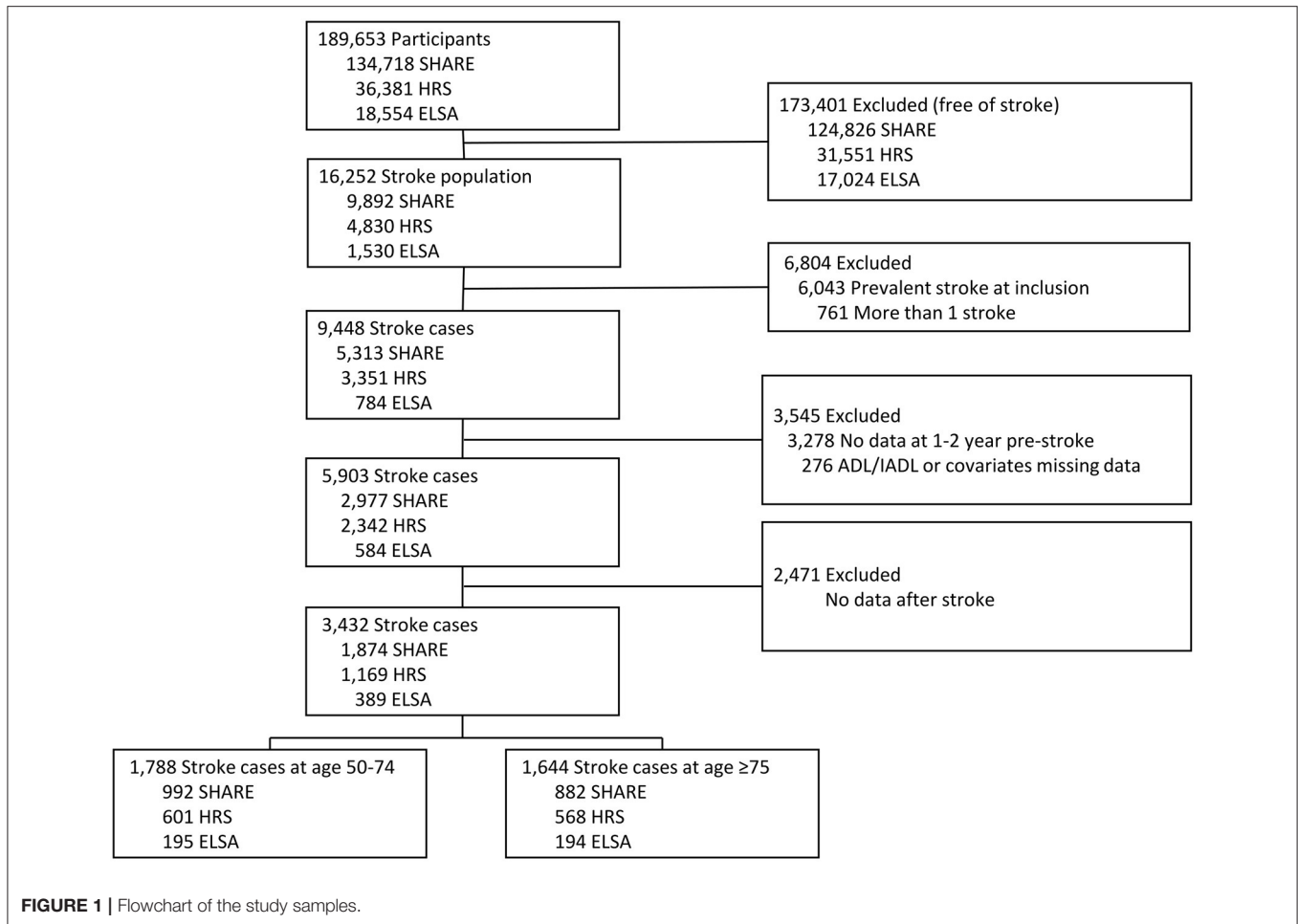
Sensitivity Analysis

We undertook several sensitivity analyses to test the robustness of our results. First, analyses were carried out separately in HRS, SHARE, and ELSA to evaluate the influence of each survey. Second, imputation of ADL/IADL limitations at 1 year before stroke was performed for participants with limitation data only at 2 years before stroke. We imputed values based on predictions from a fully adjusted linear mixed model with data from 1 and 2 years before stroke, and then repeated the main analysis to evaluate whether limitations increased during the year before stroke where limitation data were missing. Third, because the follow-up period differed between surveys [means (range): HRS = 5.7 (0–21), SHARE = 3.4 (0–11), ELSA = 5.8 (0–16)], the analyses were repeated restricting the follow-up to 6 years (median of total follow-up) to evaluate the influence of follow-up periods of different lengths. Finally, premorbid disability was associated with a high risk of mortality after stroke, potentially impacting estimates of change in limitations in stroke survivors; thus, we replicated the analysis excluding participants who died during follow-up to assess the effect of mortality on results.

RESULTS

Population Characteristics

Of the 189,653 participants from the 3 surveys, 16,252 individuals reported a history of stroke. 6,804 participants were excluded due to prevalent stroke at study baseline ($N = 6,043$) or multi-stroke event over the follow-up period ($N = 761$). Of 9,448 participants with first-ever stroke, 3,545 did not participate 1–2 years pre-stroke or had missing ADL/IADL limitation or covariate data at this wave. Finally, 2,471 participants were excluded due to non-participation following the subacute phase, leading to an analytic



sample of 3,432 first-ever stroke cases (1,169 in HRS; 1,874 in SHARE; 389 in ELSA) (Figure 1).

At the last interview before stroke (1,541 1 year before stroke and 1,891 2 years before stroke), the mean age of participants was 73.5 (SD = 9.7) years, 55% were female, 54% reported no limitation, 27% reported slight-to-moderate disability (P-mRS 2–3), and 18% reported moderately-severe and severe disability (P-mRS 4–5). Participants in the slight moderate (P-mRS 2–3) and moderate severe and severe (P-mRS 4–5) disability groups compared to those with no limitations (P-mRS 0–1), were older, more likely to be women, with lower educational level, single/divorced/widowed, non-smokers, non-drinkers, obese (BMI ≥ 30 kg/m²) and less likely to take part in moderate and vigorous physical activities; they also tended to have a higher number of comorbidities (all *p* < 0.001; Table 1). These differences were evident in both age groups (Supplementary Tables 1, 2).

In the multivariate logistic model comparing participants with no premorbid disability (P-mRS 0–1) to those with premorbid disability (P-mRS ≥ 2, 38% for those aged 50–74 and 53% for those aged ≥75), participants who were women, with lower educational level and more comorbidities were more likely to have a premorbid disability (all *p* < 0.05) in both age

groups. Age and obesity were associated with higher odds of premorbid disability only for participants aged ≥75, and single/divorced/widowed participants were more likely to have disability only in those aged 50–74 (Supplementary Table 3).

Change in the Number of ADL Limitations

The mean follow-up was 5.1 (SD = 3.9) years for all levels of premorbid disability in the group aged 50–74 years and 3.6 (SD = 2.7) years in the group aged ≥75 years. The change in the number of ADL limitations between pre-stroke and 1 year post-stroke differed as a function of premorbid disability levels (*p* < 0.005). At 1 year post-stroke, participants aged 50–74 years with no premorbid limitations (P-mRS 0–1) showed a 9% increase (ΔADL = 0.64, 95%CI = 0.54–0.75, out of a maximum of 7 limitations) in ADL limitations compared to their pre-stroke ADL limitations score (Figure 2, Supplementary Table 4). This increase was 4% among those with slight-to-moderate premorbid limitation (P-mRS 2–3; ΔADL = 0.30, 95%CI = 0.15–0.46) and 0.6% among those with premorbid moderately severe to severe limitation levels (P-mRS 4–5; ΔADL = 0.04, 95%CI = –0.14–0.24; Figure 2, Supplementary Table 4). Among participants aged ≥75 years at stroke event, individuals with no limitation or slight-to-moderate premorbid disability levels had a similar

TABLE 1 | Characteristics of the study sample at last^a interview before stroke onset according to premorbid disability level using modified Rankin scale (P-mRS)^b.

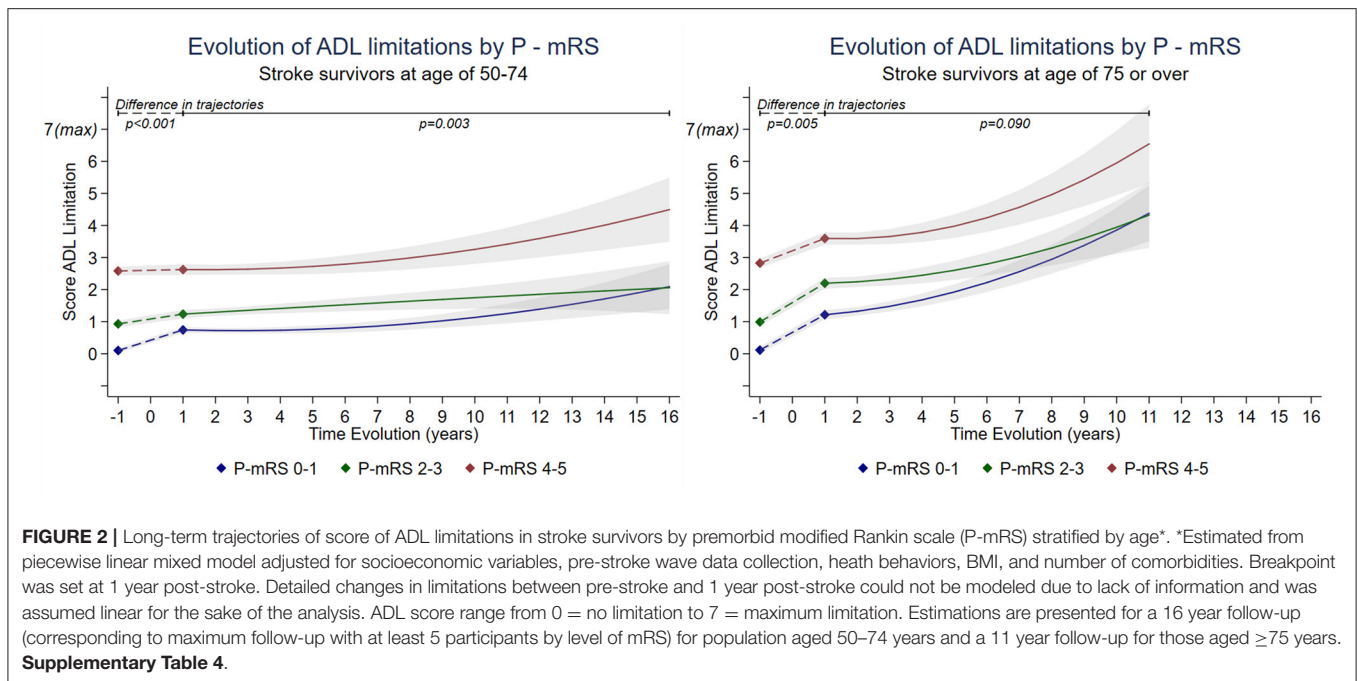
Characteristics	Premorbid Disability Level			p
	P-mRS 0–1 (N = 1,872)	P-mRS 2–3 (N = 925)	P-mRS 4–5 (N = 635)	
Sex				
Men	984 (52.6)	344 (37.2)	215 (33.9)	<0.001
Women	888 (47.4)	581 (62.8)	420 (66.1)	
Age (years)				
50–65	547 (29.2)	220 (23.8)	137 (21.6)	<0.001
66–74	553 (29.5)	211 (22.8)	120 (18.9)	
75–81	457 (24.4)	232 (25.1)	161 (25.4)	
>81	315 (16.8)	262 (28.3)	217 (34.2)	
Education level				
Low	543 (29.0)	366 (39.6)	317 (49.9)	<0.001
Middle	917 (49.0)	415 (44.9)	241 (38.0)	
High	412 (22.0)	144 (15.6)	77 (12.1)	
Marital status				
Single/divorced/widowed	695 (37.1)	412 (44.5)	349 (55.0)	<0.001
Married/Cohabiting	1,177 (62.9)	513 (55.5)	286 (45.0)	
Smoking status				
Non-smoking	889 (47.5)	578 (62.5)	404 (63.6)	<0.001
Current smoking	983 (52.5)	347 (37.5)	231 (36.4)	
Alcohol consumption				
Non-drinkers	900 (48.1)	586 (63.4)	506 (79.7)	<0.001
Moderate drinkers	636 (34.0)	208 (22.5)	69 (10.9)	
Heavy drinkers	336 (18.0)	131 (14.2)	60 (9.5)	
MVPA at least 3 times a week				
No	700 (37.4)	564 (61.0)	544 (85.7)	<0.001
Yes	1,172 (62.6)	361 (39.0)	91 (14.3)	
BMI (kg/m²)				
<25	608 (32.5)	289 (31.2)	167 (26.3)	<0.001
25–30	779 (41.6)	354 (38.3)	215 (33.9)	
>30	485 (25.9)	282 (30.5)	253 (39.8)	
Number of comorbidities				
0	322 (17.2)	50 (5.4)	25 (3.9)	<0.001
1	567 (30.3)	166 (18.0)	66 (10.4)	
2	449 (24.0)	243 (26.3)	113 (17.8)	
3 or more	534 (28.5)	466 (50.4)	431 (67.9)	
ADL limitation Score (0–7)^c				
Mean (SD)	0.0 (0.0)	1.0 (0.9)	2.8 (1.8)	<0.001
IADL limitation Score (0–6)^c				
Mean (SD)	0.0 (0.0)	1.0 (1.2)	1.7 (1.9)	<0.001

^aInterview maximum 2 years before stroke. ^bValues are numbers (percentages). ^cScore corresponds to number of ADL or IADL limitations. Percentages are reported in column. ADL, Activities of daily living; IADL, Instrumental ADL; P-mRS, premorbid modified Ranking Scale; MVPA, moderate-to-vigorous physical activity.

increase (15.7% [Δ ADL = 1.10 95%CI = 0.94–1.26] and 17.2% [Δ ADL = 1.21 95%CI = 1.02–1.39] respectively; $p = 0.388$) in ADL limitations pre-stroke and 1 year post stroke while those with moderate-to-severe premorbid disability tended to experience a lower increase in ADL limitations (11% [Δ ADL = 0.77 95%CI = 0.56–0.98], $p < 0.001$).

When examining the long-term trajectories of ADL limitations (after 1 year post-stroke), in participants aged

50–74 at stroke event, only P-mRS 2–3 showed a significant 5.0% increase (Δ ADL = 0.35 95%CI = 0.11–5.85, $p = 0.004$) between years 1 and 7. Then, between 7 and 16 years post-stroke, those with premorbid disability level 0–1 and 4–5 showed a significant increase of 17.0% (Δ ADL = 1.23 95%CI = 0.59–1.86, $p < 0.001$) and 23.0% in ADL limitations score respectively (Δ ADL = 1.61 95%CI = 0.76–2.46, $p < 0.001$), while those with premorbid disability level of 2–3 showed no



significant increase. In participants aged ≥ 75 years at stroke event, there were no significant differences in ADL change 1 year post-stroke between premorbid disability levels ($p = 0.090$, **Figure 2, Supplementary Table 4**). Between post-stroke years 1 and 4, individuals with p-mRS levels at 0–1 and 2–3 had a mean increase in ADL score of 6.6% ($\Delta\text{ADL} = 0.46$ 95%CI = 0.26–0.66, $p < 0.001$) and 3.5% ($\Delta\text{ADL} = 0.25$ 95%CI = 0.01–0.49, $p = 0.050$), respectively, while those with level 4–5 had a non-significant increase of 2.7% ($\Delta\text{ADL} = 0.19$ 95%CI = –0.11 to 0.48, $p = 0.211$). Between 4 and 12 years post-stroke, all levels of P-mRS showed a similar increase in ADL limitations: 46.7% ($\Delta\text{ADL} = 3.27$ 95%CI = 2.26–4.28, $p < 0.001$) for level 0–1, 32.8% ($\Delta\text{ADL} = 2.29$ 95%CI = 1.11–3.48, $p < 0.001$) for level 2–3 and 48.8% ($\Delta\text{ADL} = 3.42$ 95%CI = 1.99–4.84, $p < 0.001$) for level 4–5.

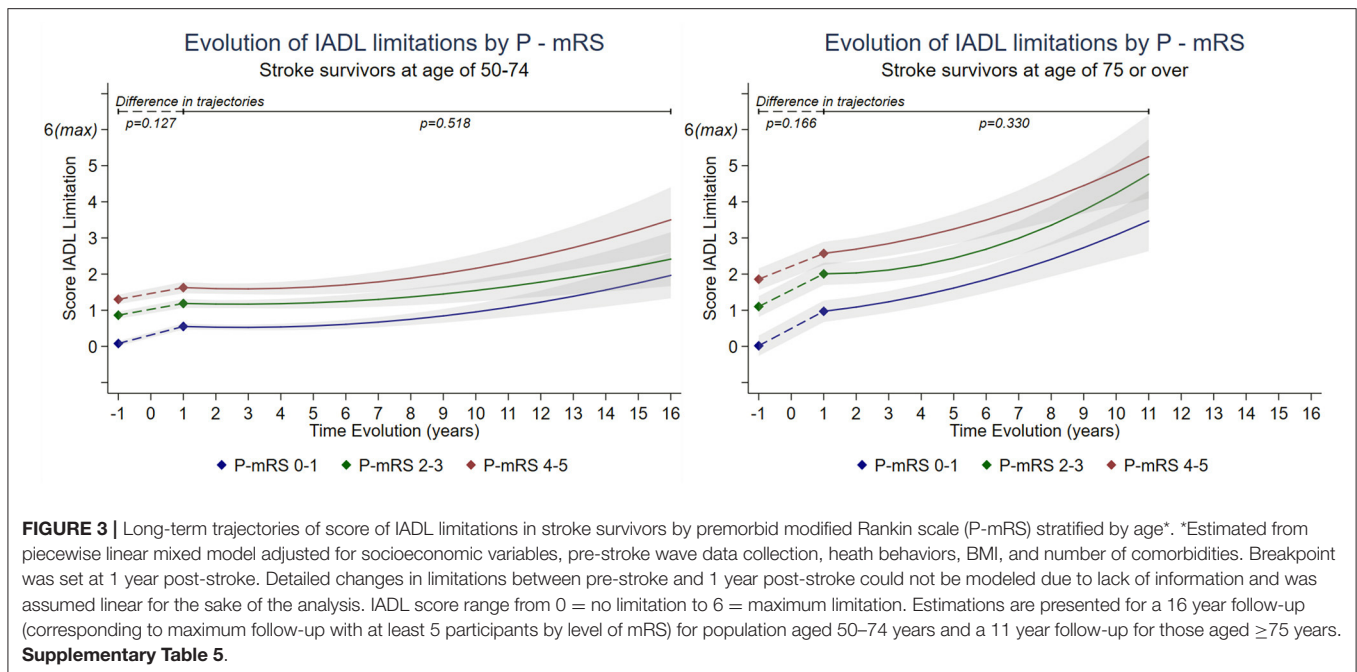
Change in the Number of IADL Limitations

The trajectories of IADL limitations over the follow-up did not differ by premorbid disability level for both age groups (**Figure 3, Supplementary Table 5**). Among participants aged 50–74 years at stroke event, at 1 year post-stroke, increase in IADL limitation score was similar whether the premorbid disability level was 0–1 (7.9% increase, $\Delta\text{IADL} = 0.47$ 95%CI = 0.37–0.57 out of a maximum of 6 limitations), 2–3 (5.4%, $\Delta\text{IADL} = 0.32$ 95%CI = 0.19–0.46), or 4–5 (5.4%, $\Delta\text{IADL} = 0.32$ 95%CI = 0.15–0.50; comparison ΔIADL for 0–1 vs. 2–3, $p = 0.07$; for 0–1 vs. 4–5, $p = 0.146$). Changes of IADL limitations did not differ by premorbid disability levels for those aged ≥ 75 at 1 year post-stroke ($p = 0.166$). The increase in IADL score was 15.1% ($\Delta\text{IADL} = 0.95$ 95%CI = 0.80–1.10) for level 0–1, 15.8% ($\Delta\text{IADL} = 0.90$ 95%CI = 0.72–1.08) for level 2–3 and 11.9% ($\Delta\text{IADL} = 0.71$ 95%CI = 0.51–0.91) for level 4–5.

Long-term trajectories showed no significant differences between levels of premorbid disability. Between post-stroke years 1 and 7 in participants aged 50–74 years, there was no evidence of change in ADL limitations irrespective of premorbid disability level ($\Delta\text{IADL} < 3\%$ and $p > 0.115$ for all levels). A significant increase in IADL limitations was then observed between years 7 and 16 post-stroke in all levels: 21.0% ($\Delta\text{IADL} = 1.29$ 95%CI = 0.71–1.87, $p < 0.001$) for level 0–1, 18.6% ($\Delta\text{IADL} = 1.11$ 95%CI = 0.45–1.78, $p = 0.001$) for level 2–3, and 28.6% ($\Delta\text{IADL} = 1.72$ 95%CI = 0.94–2.49, $p < 0.001$) for level 4–5. In participants aged ≥ 75 years, the increase of IADL limitations was observed from 1 year post-stroke; level 0–1 and 4–5 showed an increase of 7.0% ($\Delta\text{IADL} = 0.44$ 95%CI = 0.25–0.62, $p = 0.001$; $\Delta\text{IADL} = 0.45$ 95%CI = 0.18–0.73, $p = 0.001$ respectively) and level 2–3 showed an increase of 4.0% ($\Delta\text{IADL} = 0.24$ 95%CI = 0.13–0.47, $p = 0.001$) during a follow-up between year 1 and 4 post-stroke. Then, between years 4 and 12 post-stroke a more pronounced increase was observed irrespective of premorbid disability levels; 41.2% ($\Delta\text{IADL} = 2.48$ 95%CI = 1.53–3.41, $p < 0.001$) for those in level 0–1, 51.6% ($\Delta\text{IADL} = 3.10$ 95%CI = 2.00–4.20, $p = 0.001$) for those in level 2–3, and 44.5% ($\Delta\text{IADL} = 2.67$ 95%CI = 1.35–3.99, $p = 0.001$) for those in level 4–5.

Sensitivity Analysis

In the analyses stratified by survey, the results at 1 year post-stroke showed similar findings as the main analysis. Long-term trajectories were found to be similar to the main results, except for ADL changes in SHARE and IADL in ELSA, possibly due to absence of data with long follow-up (**Supplementary Figures 2, 3**). Second, in analyses with imputation of ADL/IADL limitations score at 1 year pre-stroke,



the results were similar to the main analysis suggesting that possible increase in limitations between 2 and 1 years pre-stroke did not influence the change in limitations during post-stroke follow-up (**Supplementary Figure 4**). Third, analyses repeated with period of follow-up limited to 6 years post-stroke showed similar results to the main analysis suggesting that results were not influenced by the length of follow-up (**Supplementary Figure 5**). Finally, removal from analysis of participants who died during the follow-up period (P-mRS 0–1 = 213, 2–3 = 200, 4–5 = 198, **Supplementary Table 6**) did not alter findings, suggesting mortality did not influence findings (**Supplementary Figure 6**).

DISCUSSION

In this observational study of 3,432 stroke participants with a premorbid disability measure drawn from three international longitudinal surveys, premorbid disability was observed in around 45% of participants. The increase of ADL limitations at 1 year post-stroke was less pronounced in cases with premorbid disability (P-mRS levels 2–5 for those aged 50–74 years and 4–5 for those aged ≥ 75 years) compared with those reporting none. In the long term, relative stability in ADL limitations was observed between 1 and 7 year post-stroke for those aged 50–74 years and between 1 and 4 years for those aged ≥ 75 years. Thereafter, a similar increase was observed irrespective of the premorbid disability level, with the exception of those aged 50–74 years with moderate to severe premorbid disability (P-mRS levels 4–5) where the increase was slightly more pronounced. The trajectories of IADL limitations did not differ between premorbid disability levels.

Comparison With Previous Studies

In agreement with previously reported studies with long-term follow-up undertaken in populations with premorbid disability (14, 15, 18), we observed a high proportion of participants reporting limitations prior to stroke, especially older participants. Previous studies showed that long-term outcomes in participants with premorbid disability tended to be less favorable with age (13–15, 35, 36); the present study adds to evidence that trajectories of ADL limitations post-stroke differed by premorbid disability levels, particularly among participants with stroke at younger age. In addition, our analyses accounting for pre-stroke ADL limitations allowed us to observe an increase in ADL limitations at 1 year post-stroke that was less pronounced for those with slight to severe premorbid disability (P-mRS 2–5). This finding is consistent with a previous study that showed a higher increase in mRS 3 months post-stroke among individuals with no premorbid limitations (14). Finally, a recent study showed that patients with premorbid disability treated with thrombectomy had no functional differences with patients who did not have premorbid disability 3 months after stroke (37). This contrasts with our results, in which the trajectories of ADL limitations differed according to P-mRS levels at 1 year post-stroke, however this difference ceases to be significant after several years.

Strengths and Limitations

This observational study has several strengths including a large number of participants with multi-country data on premorbid disability status assessed prospectively before stroke onset. This allowed us to stratify the analysis by age and examine the differences in the trajectories of limitations by levels of premorbid disability maintaining a sufficient number of participants over the

follow-up period to ensure robust results. The use of a piece-wise mixed model allowed the examination of two different periods (pre-stroke to 1 year, and 1 to 16 years after stroke) in the same model taking into account the association with both the end of the sub-acute post-stroke phase and long-term trajectory of functional limitations (38).

Our results should be considered in light of the following limitations: (1) subtype of stroke information was not available and stroke was self-reported or reported by a proxy, introducing a possible recall bias. Nevertheless, in previous studies it was observed that prevalence of self-report of chronic conditions such as stroke is close to prevalence obtained from linkage to electronic medical records with agreement of 96% (39). Even so, previous studies show a range of sensitivities between 36 and 98% and a specificity between 96 and 99% (40). Inclusion of false positive (confusion with stroke synonyms) (41) might have affected the trajectory of those with no significant disability (P-mRS 0–1). (2) Data on premorbid status was collected in a period of maximum 2 years before the stroke onset, thus participants measured 2 years pre-stroke may present a different premorbid state at stroke onset compared to participants with measure at 1 year pre-stroke. To assess potential selection bias, an analysis with data imputed for those measured at 2 years pre-stroke was conducted and results were consistent with main findings. (3) Previous studies reported an association between premorbid disability level and mortality, and long-term results may be influenced by the death of participants with a higher level of disability (38, 42). To address this limitation, the analysis was repeated excluding all cases with a report of death during follow-up; the results were consistent with the main findings. (4) We used three different surveys which might increase heterogeneity in the measures; however, previous studies showed good concordance between cohorts and sensitivity analyses stratified by survey suggest that our results were similar across cohorts (28). (5) The P-mRS was derived from the count of ADL and IADL limitations, this scale will require further validation in the premorbid population, although it is beginning to be commonly used to assess the pre-stroke disability level retrospectively in research and clinical settings; the P-mRS was used to categorize the premorbid disability level of stroke participants giving a more clinically significant and comprehensive characterization of premorbid disability than the simple count of ADL and IADL limitations.

Clinical Implications and Future Research

The clinical care of stroke patients may be different when the patient has a premorbid disability, because of the tendency to establish a pessimistic prognosis for patients with a disability (*fragility bias*) (11, 17). However, our findings suggest that after 1 year post-stroke the increase in limitations is less pronounced for participants with premorbid disability and in the long term all levels showed several years of relative stability. In addition, change in IADL limitations does not differ by severity level of premorbid disability. These findings should be confirmed in future prospective studies, and may encourage healthcare professionals to treat patients with premorbid disability more rigorously during the acute phase of stroke. Our findings suggest

the importance of future research aimed at understanding the impact of premorbid disability in acute illness, and addressing possible bias in health care. In addition, future studies should consider trajectories of different types of disability (physical, sensory, or cognitive) after an acute event. Further studies are also needed in low-income countries, where access to preventive and rehabilitative health services may be more restricted.

CONCLUSION

The present study may indicate that premorbid disability is present in more than 1/3 of stroke survivors and the trajectories of ADL limitations may be influenced by premorbid disability after several years of relative stability. After the stable period, an increase in ADL limitations is more pronounced in those with severe premorbid disability levels. IADL limitations have a similar trajectories regardless of the level of premorbid disability. These results highlight the importance of adapting health and social care for stroke survivors toward greater inclusion of patients with premorbid disability.

DATA AVAILABILITY STATEMENT

Publicly available datasets were analyzed in this study. This data can be found here: Health and Retirement Study (HRS), <https://hrsdata.isr.umich.edu/data-products>, Survey of Health, Aging and Retirement in Europe (SHARE), <http://www.share-project.org/data-access/share-conditions-of-use.html> and English Longitudinal Study of Aging (ELSA), <https://www.elsa-project.ac.uk/accessing-elsa-data>.

AUTHOR CONTRIBUTIONS

AG-S and AS: conceptualization, data curation, and writing—original draft preparation. AG-S, SS, AD, and AF: methodology. SS, AD, AF, and AS: validation. AG-S, AD, and AF: formal analysis and visualization. AD, AF, LJ, MB, and BL: writing—review and editing. AS: supervision. All authors contributed to the article and approved the submitted version.

FUNDING

This present study was financed by the University of Paris in the framework of pdh's training. The HRS was sponsored by the National Institute on Aging (Grant No. NIA U01AG009740) and was conducted by the University of Michigan. The SHARE data collection has been primarily funded by the European Commission through the FP5 (QLK6-CT-2001-00360), FP6 (SHARE-I3: RII-CT-2006-062193, COMPARE: CIT5-CT-2005-028857, SHARELIFE: CIT4-CT-2006-028812), and FP7 (SHARE-PREP: N 211909, SHARE-LEAP: 227822, SHARE M4: N 261982). Additional funding from the German Ministry of Education and Research, the U.S. National Institute on Aging (U01_AG09740-13S2, P01_AG005842, P01_AG08291, P30_AG12815, R21_AG025169, Y1-AG-4553-01, IAG_BSR06-11, OGH04-064), and from various national funding sources

is gratefully acknowledged (see www.share-project.org). The ELSA data were made available through the UK Data Archive. ELSA was developed by a team of researchers based at the NatCen Social Research, University College London, and the Institute for Fiscal Studies. The data were collected by NatCen Social Research. The funding was provided by the National Institute of Aging in the United States and a consortium of UK government departments coordinated by the Office for National Statistics. The developers and funders of ELSA and the Archive do not bear any responsibility for the analyses or interpretations presented here.

REFERENCES

- Katan M, Luft A. Global burden of stroke. *Semin Neurol.* (2018) 38:208–11. doi: 10.1055/s-0038-1649503
- Deuschl G, Beghi E, Fazekas F, Varga T, Christoforidi KA, Sipido E, et al. The burden of neurological diseases in Europe: an analysis for the global burden of disease study 2017. *Lancet Public Health.* (2020) 5:e551–67. doi: 10.1016/S2468-2667(20)30190-0
- Kelly-Hayes M, Beiser A, Kase CS, Scaramucci A, D'Agostino RB, Wolf PA. The influence of gender and age on disability following ischemic stroke: the Framingham study. *J Stroke Cerebrovasc Dis.* (2003) 12:119–26. doi: 10.1016/S1052-3057(03)00042-9
- Wolfe CD, Crichton SL, Heuschmann PU, McKevitt CJ, Toschke AM, Grieve AP, et al. Estimates of outcomes up to ten years after stroke: analysis from the prospective south London stroke register. *PLoS Med.* (2011) 8:e1001033. doi: 10.1371/journal.pmed.1001033
- Blomgren C, Jood K, Jern C, Holmegaard L, Redfors P, Blomstrand C, et al. Long-term performance of instrumental activities of daily living (Iadl) in young and middle-aged stroke survivors: results from Sahlsin outcome. *Scand J Occup Ther.* (2018) 25:119–26. doi: 10.1080/11038128.2017.1329343
- Feigin VL, Barker-Collo S, McNaughton H, Brown P, Kerse N. Long-term neuropsychological and functional outcomes in stroke survivors: current evidence and perspectives for new research. *Int J Stroke.* (2008) 3:33–40. doi: 10.1111/j.1747-4949.2008.00177.x
- Wahlgren N, Ahmed N, Davalos A, Ford GA, Grond M, Hacke W, et al. Thrombolysis with alteplase for acute ischaemic stroke in the safe implementation of thrombolysis in stroke-monitoring study (sits-most): an observational study. *Lancet.* (2007) 369:275–82. doi: 10.1016/S0140-6736(07)60149-4
- Karlinski M, Kobayashi A, Mikulik R, Sanak D, Wahlgren N, Czlonkowska A, et al. Intravenous alteplase in ischemic stroke patients not fully adhering to the current drug license in central and eastern Europe. *Int J Stroke.* (2012) 7:615–22. doi: 10.1111/j.1747-4949.2011.00733.x
- Karlinski M, Kobayashi A, Czlonkowska A, Mikulik R, Vaclavik D, Brozman M, et al. Role of preexisting disability in patients treated with intravenous thrombolysis for ischemic stroke. *Stroke.* (2014) 45:770–5. doi: 10.1161/STROKEAHA.113.003744
- Capo-Lugo CE, Askew RL, Naidech A, Prabhakaran S. Patients with greater stroke severity and premorbid disability are less likely to receive therapist consultations and intervention during acute care hospitalization. *Phys Ther.* (2019) 99:1431–42. doi: 10.1093/ptj/pzz116
- Young MJ, Regenhardt RW, Leslie-Mazwi TM, Stein MA. Disabling stroke in persons already with a disability: ethical dimensions and directives. *Neurology.* (2020) 94:306–10. doi: 10.1212/WNL.0000000000008964
- Krahn GL, Walker DK, Correa-De-Araujo R. Persons with disabilities as an unrecognized health disparity population. *Am J Public Health.* (2015) 105(Suppl. 2):S198–206. doi: 10.2105/AJPH.2014.302182
- Capistrant BD, Mejia NI, Liu SY, Wang Q, Glymour MM. The disability burden associated with stroke emerges before stroke onset and differentially affects blacks: results from the health and retirement study cohort. *J Gerontol A Biol Sci Med Sci.* (2014) 69:860–70. doi: 10.1093/gerona/glt191

ACKNOWLEDGMENTS

We are grateful to the respondents from each of the studies for their considerable time and all members of the HRS, SHARE, and ELSA study teams.

SUPPLEMENTARY MATERIAL

The Supplementary Material for this article can be found online at: <https://www.frontiersin.org/articles/10.3389/fneur.2022.888119/full#supplementary-material>

- Ganesh A, Luengo-Fernandez R, Pendlebury ST, Rothwell PM. Long-term consequences of worsened poststroke status in patients with premorbid disability. *Stroke.* (2018) 49:2430–6. doi: 10.1161/STROKEAHA.118.022416
- Kwok CS, Clark A, Ford GA, Durairaj R, Dixit AK, Davis J, et al. Association between prestroke disability and inpatient mortality and length of acute hospital stay after acute stroke. *J Am Geriatr Soc.* (2012) 60:726–32. doi: 10.1111/j.1532-5415.2011.03889.x
- Foell RB, Silver B, Merino JG, Wong EH, Demaerschalk BM, Poncha F, et al. Effects of thrombolysis for acute stroke in patients with pre-existing disability. *CMAJ.* (2003) 169:193–7.
- Rohaut B, Claassen J. Decision making in perceived devastating brain injury: a call to explore the impact of cognitive biases. *Br J Anaesth.* (2018) 120:5–9. doi: 10.1016/j.bja.2017.11.007
- Luengo-Fernandez R, Paul NL, Gray AM, Pendlebury ST, Bull LM, Welch SJ, et al. Population-based study of disability and institutionalization after transient ischemic attack and stroke: 10-year results of the oxford vascular study. *Stroke.* (2013) 44:2854–61. doi: 10.1161/STROKEAHA.113.001584
- Quinn TJ, Taylor-Rowan M, Coyte A, Clark AB, Musgrave SD, Metcalf AK, et al. Pre-stroke modified rankin scale: evaluation of validity, prognostic accuracy, and association with treatment. *Front Neurol.* (2017) 8:275. doi: 10.3389/fneur.2017.00275
- Chatterji S, Byles J, Cutler D, Seeman T, Verdes E. Health, functioning, and disability in older adults—present status and future implications. *Lancet.* (2015) 385:563–75. doi: 10.1016/S0140-6736(14)61462-8
- Wundergem R, Pisters ME, Wouters EJ, Olthof N, de Bie RA, Visser-Meily JM, et al. The course of activities in daily living: who is at risk for decline after first ever stroke? *Cerebrovasc Dis.* (2017) 43:1–8. doi: 10.1159/000451034
- Minicuci N, Naidoo N, Chatterji S, Kowal P. Data resource profile: cross-national and cross-study sociodemographic and health-related harmonized domains from Sage Plus Elsa, Hrs and Share (Sage+, Wave 1). *Int J Epidemiol.* (2016) 45:1403–j. doi: 10.1093/ije/dyw181
- Fisher GG, Ryan LH. Overview of the health and retirement study and introduction to the special issue. *Work Aging Retire.* (2018) 4:1–9. doi: 10.1093/workar/wax032
- Borsch-Supan A, Brandt M, Hunkler C, Kneip T, Korbacher J, Malter F, et al. Data resource profile: the survey of health, ageing and retirement in Europe (Share). *Int J Epidemiol.* (2013) 42:992–1001. doi: 10.1093/ije/dyt088
- Stephoe A, Breeze E, Banks J, Nazroo J. Cohort profile: the English longitudinal study of ageing. *Int J Epidemiol.* (2013) 42:1640–8. doi: 10.1093/ije/dys168
- Ay H, Gungor L, Arsava EM, Rosand J, Vangel M, Benner T, et al. A score to predict early risk of recurrence after ischemic stroke. *Neurology.* (2010) 74:128–35. doi: 10.1212/WNL.0b013e3181ca9c9f
- Arsava EM, Kim GM, Oliveira-Filho J, Gungor L, Noh HJ, Lordelo Mde J, et al. Prediction of early recurrence after acute ischemic stroke. *JAMA Neurol.* (2016) 73:396–401. doi: 10.1001/jamaneurol.2015.4949
- Chan KS, Kasper JD, Brandt J, Pezzin LE. Measurement equivalence in Adl and Iadl difficulty across international surveys of aging: findings from the Hrs, Share, and Elsa. *J Gerontol B Psychol Sci Soc Sci.* (2012) 67:121–32. doi: 10.1093/geronb/gbr133
- Katz S. Assessing self-maintenance: activities of daily living, mobility, and instrumental activities of daily living. *J Am Geriatr Soc.* (1983) 31:721–7. doi: 10.1111/j.1532-5415.1983.tb03391.x

30. Lawton MP, Brody EM. Assessment of older people: self-maintaining and instrumental activities of daily living. *Gerontologist*. (1969) 9:179–86. doi: 10.1093/geront/9.3_Part_1.179
 31. Ullberg T, Zia E, Petersson J, Norrving B. Changes in functional outcome over the first year after stroke: an observational study from the Swedish stroke register. *Stroke*. (2015) 46:389–94. doi: 10.1161/STROKEAHA.114.006538
 32. Schnitzler A, Woimant F, Tuppin P, de Peretti C. Prevalence of self-reported stroke and disability in the French adult population: a transversal study. *PLoS ONE*. (2014) 9:e115375. doi: 10.1371/journal.pone.0115375
 33. Bruno A, Akinwuntan AE, Lin C, Close B, Davis K, Baute V, et al. Simplified modified rankin scale questionnaire: reproducibility over the telephone and validation with quality of life. *Stroke*. (2011) 42:2276–9. doi: 10.1161/STROKEAHA.111.613273
 34. Wahrendorf M, Reinhardt JD, Siegrist J. Relationships of disability with age among adults aged 50 to 85: evidence from the United States, England and continental Europe. *PLoS ONE*. (2013) 8:e71893. doi: 10.1371/journal.pone.0071893
 35. Singam A, Ytterberg C, Tham K, von Koch L. Participation in complex and social everyday activities six years after stroke: predictors for return to pre-stroke level. *PLoS ONE*. (2015) 10:e0144344. doi: 10.1371/journal.pone.0144344
 36. Satow T, Komuro T, Ogawa M. Premorbid instrumental activities of daily living predicts discharge home following stroke. *eNeurologicalSci*. (2020) 18:100226. doi: 10.1016/j.ensci.2020.100226
 37. Florent EG, Barbara C, Marc F, Maeva K, Fouzi B, Lucie DS, et al. Clinical outcomes and safety of mechanical thrombectomy for acute ischaemic stroke in patients with pre-existing dependency. *J Stroke Cerebrovasc Dis*. (2021) 30:105848. doi: 10.1016/j.jstrokecerebrovasdis.2021.105848
 38. Magalhaes R, Abreu P, Correia M, Whiteley W, Silva MC, Sandercock P. Functional status three months after the first ischemic stroke is associated with long-term outcome: data from a community-based cohort. *Cerebrovasc Dis*. (2014) 38:46–54. doi: 10.1159/000364938
 39. van den Akker M, van Steenkiste B, Krutwagen E, Metsemakers JF. Disease or no disease? Disagreement on diagnoses between self-reports and medical records of adult patients. *Eur J Gen Pract*. (2015) 21:45–51. doi: 10.3109/13814788.2014.907266
 40. Woodfield R, Group UKBSO, Follow-up UKB, Outcomes Working G, Sudlow CL. Accuracy of patient self-report of stroke: a systematic review from the UK biobank stroke outcomes group. *PLoS ONE*. (2015) 10:e0137538. doi: 10.1371/journal.pone.0137538
 41. Sacco RL, Kasner SE, Broderick JP, Caplan LR, Connors JJ, Culebras A, et al. An updated definition of stroke for the 21st century: a statement for healthcare professionals from the American Heart Association/American Stroke Association. *Stroke*. (2013) 44:2064–89. doi: 10.1161/STR.0b013e318296aeca
 42. Slot KB, Berge E, Dorman P, Lewis S, Dennis M, Sandercock P, et al. Impact of functional status at six months on long term survival in patients with ischaemic stroke: prospective cohort studies. *BMJ*. (2008) 336:376–9. doi: 10.1136/bmj.39456.688333.BE
- Conflict of Interest:** The authors declare that the research was conducted in the absence of any commercial or financial relationships that could be construed as a potential conflict of interest.
- Publisher's Note:** All claims expressed in this article are solely those of the authors and do not necessarily represent those of their affiliated organizations, or those of the publisher, the editors and the reviewers. Any product that may be evaluated in this article, or claim that may be made by its manufacturer, is not guaranteed or endorsed by the publisher.
- Copyright © 2022 Gil-Salcedo, Dugravot, Fayosse, Landré, Jacob, Bloomberg, Sabia and Schnitzler. This is an open-access article distributed under the terms of the Creative Commons Attribution License (CC BY). The use, distribution or reproduction in other forums is permitted, provided the original author(s) and the copyright owner(s) are credited and that the original publication in this journal is cited, in accordance with accepted academic practice. No use, distribution or reproduction is permitted which does not comply with these terms.