



**HAL**  
open science

## Year-round at-sea movements of fairy prions from south-eastern Australia

Aymeric Fromant, Yonina Eizenberg, Timothée Poupart, Paco Bustamante, John Arnould

► **To cite this version:**

Aymeric Fromant, Yonina Eizenberg, Timothée Poupart, Paco Bustamante, John Arnould. Year-round at-sea movements of fairy prions from south-eastern Australia. *Royal Society Open Science*, 2022, 9 (5), pp.2022-05. 10.1098/rsos.220134 . hal-03775035v1

**HAL Id: hal-03775035**

**<https://hal.science/hal-03775035v1>**

Submitted on 10 Sep 2022 (v1), last revised 14 Sep 2022 (v2)

**HAL** is a multi-disciplinary open access archive for the deposit and dissemination of scientific research documents, whether they are published or not. The documents may come from teaching and research institutions in France or abroad, or from public or private research centers.

L'archive ouverte pluridisciplinaire **HAL**, est destinée au dépôt et à la diffusion de documents scientifiques de niveau recherche, publiés ou non, émanant des établissements d'enseignement et de recherche français ou étrangers, des laboratoires publics ou privés.

## Year-round at-sea movements of fairy prions from south-eastern Australia

Aymeric Fromant<sup>1,2</sup>, Yonina H. Eizenberg<sup>1,2</sup>, Timothée Poupart<sup>1,2</sup>, Paco Bustamante<sup>3,4</sup>, John P.Y. Arnould<sup>1</sup>

<sup>1</sup>School of Life and Environmental Sciences, Deakin University, 221 Burwood Hwy,  
Burwood, VIC 3125, Australia

<sup>2</sup>Centre d'Etudes Biologiques de Chizé (CEBC), UMR 7372 CNRS – La Rochelle Université,  
79360 Villiers-en-Bois, France

<sup>3</sup>Littoral Environnement et Sociétés (LIENSs), UMR 7266 – La Rochelle Université, 2 rue  
Olympe de Gouges, 17000 La Rochelle, France

<sup>4</sup>Institut Universitaire de France (IUF), 1 rue Descartes 75005 Paris, France

Corresponding author: Aymeric Fromant (aymericfromant@yahoo.fr)

**Abstract:** Effective conservation assessments require detailed information of species' ecological niches during the whole annual cycle. For seabirds, this implies investigating the at-sea distribution and foraging behaviour during both the breeding and non-breeding periods. However, until recently, collecting information about small species has been precluded by the excessive size of the required devices. This lack of knowledge is exacerbated in the case of polytypic genera with species sharing very similar appearance and behaviour, such as the super-abundant prions (*Pachyptila* spp.). The present study investigates the year-round at-sea distribution and foraging ecology of the fairy prion (*Pachyptila turtur*) in south-eastern Australia. Miniaturized GPS loggers during the breeding season and geolocators (GLS) during the non-breeding period were used over 4 consecutive years (2017-2021), with results that highlight the importance of the continental shelf-edge waters for fairy prions throughout the

year. In addition, contrary to previous assumptions, the GLS data revealed an unsuspected post-breeding migration to the waters south of Australia, during which individuals likely undergo a rapid moult of flight feathers. Understanding the at-sea distribution and ecology of prions during the whole annual cycle will be fundamental to their conservation as it can reveal species- or population-specific threats that have been overlooked because of their status as abundant species.

**Keywords:** distribution, foraging behaviour, tracking, stable isotopes, migration, *Pachyptila turtur*

## Introduction

Seabirds often forage in a patchy and dynamic environment, occupying a wide range of ecological niches [1, 2]. Among them, the Procellariiformes are one of the most endangered avian groups [3] owing to the numerous natural and anthropogenic threats faced throughout their distribution [4]. Effective conservation requires precise information of species' ecological niches during the whole annual cycle, covering both the breeding and non-breeding seasons [5]. However, while studies on large and easily accessible species (albatrosses, large petrels and shearwaters) have benefited from the development of animal-borne data loggers for more than three decades [6], knowledge of the ecology of smaller species has remained limited [7]. The absence of information on their at-sea distribution or foraging ecology has greatly impacted our ability to delineate proper conservation planning [8].

This knowledge bias is exemplified by the super-abundant prions (*Pachyptila* spp.), a group of 6-7 small (< 150 g) pelagic seabird species. Despite being the most abundant seabirds in the Southern Hemisphere (90 million individuals; [9, 10]), information on their at-sea distribution is very limited. This is exacerbated by the difficulty of visually differentiating prion species at-sea due to similarity in appearance and behaviour [11]. More recently, advances in the production of small light level geolocators (GLS) has enabled the study of some of the largest prion species [12-17]. Although this technique provides valuable information about the year-round distribution of seabirds [18, 19], the low spatial resolution and temporal frequency of GLS data make it less appropriate to investigate at-sea movements during the breeding season [20]. The lack of precise knowledge regarding the at-sea distribution during the whole annual cycle is, therefore, a matter of conservation concern, especially for such ubiquitous polytypic species.

The fairy prion (*Pachyptila turtur*) is the smallest (110-130 g) of the *Pachyptila* genus [9]. The majority of the species' population breeds in New Zealand and south-eastern

Australia, but fairy prions also occupy several subantarctic islands of the Atlantic and Indian oceans [9]. In south-eastern Australia and New Zealand, fairy prions are considered to forage year-round within a few hundred kilometres of their breeding site [21], feeding predominantly on the euphausiid coastal krill (*Nyctiphanes australis*; [22]). This euphausiid species plays a major role in the high abundance of marine wildlife in these regions, being an essential food source for fish [23], seabirds [24] and whales [25]. However, as a key zooplankton species [26], any variability in abundance or distribution is likely to affect the foraging ecology and fitness of marine predators.

South-eastern Australia is among the most rapidly changing oceanic regions, characterised by strengthening currents, increasing storm frequency and warming sea surface temperature [27]. Particularly, the intensification of marine heatwaves (in frequency, duration and magnitude; [28]) greatly disrupts the zooplanktonic communities [29], potentially affecting a wide range of taxa [30]. By bottom-up controls, the important decrease in zooplankton abundance during events of extreme rise of sea temperatures is likely to induce changes in the foraging behaviour of seabirds [31]. In particular, the sensitivity of coastal krill to marine heatwaves [23, 32], and the predicted future increase in duration and frequency of such events in response to global change [28], may directly affect species such as fairy prions [33].

In south-eastern Australia, Bass Strait hosts nearly 60% of Australian seabirds, of which the great majority rely almost exclusively on coastal krill [22, 34]. In this rapidly changing environment, the threat of food shortage exposes fairy prions to an increased risk of intra- and inter-specific competition. Therefore, collecting information detailing the at-sea distribution and foraging ecology of this cryptic species is necessary to better understand and identify the fundamentals of fairy prion ecology. The objectives of this study were to describe the year-round at-sea movements of fairy prions in south-eastern Australia during: (1) the

incubation and chick-rearing periods through GPS deployments; and (2) the non-breeding period using GLS tracking. In addition, these data were combined with stable isotope analyses to investigate the trophic niche of fairy prions during the breeding period (using whole blood) and during the non-breeding period (using body feathers). Finally, the moulting patterns of flight and body feathers were explored using GLS and stable isotope information, as these aspects are critical in the annual cycle of seabirds.

## **2. Methods**

### **2.1. Study site, animal handling and instrumentation**

The study was conducted during the incubation and chick-rearing periods of breeding (October-January) over four consecutive years (2017-2021), and the non-breeding period (February-October) over two consecutive years (2019-2020) at Kanowna Island (39°15' S, 146°30' E) in northern Bass Strait, south-eastern Australia. Fairy prions breeding in this location displayed a synchronous onset of each breeding period (within a range of 11 days) over the four study years (laying: 14-24 October; hatching: 30 November-10 December; and fledging: 16-27 January) [33]. Seven seabird species breed on this island [35], including 1000-4000 breeding pairs of fairy prion, which represent 1-4% of the Bass Strait population [36].

To evaluate the at-sea movements of fairy prions during the breeding season, adult breeding birds (N individuals = 14 and n trips = 15 in incubation; N individuals = 31 and n trips = 58 in chick-rearing) were equipped with a miniaturized GPS logger (nanoFix-GEO, Pathtrack Ltd, Otley, United-Kingdom), attached to two central tail feathers using waterproof tape (Tesa 4651; Beiersdorf AG). Each individual was tracked either during the incubation or the chick-rearing period, but never during both periods within the same breeding season. The GPS loggers were programmed to record locations at 20 min and 10 min intervals during the

incubation and chick-rearing periods, respectively. The total mass of logger attachments corresponded to  $2.4 \pm 0.2\%$  of body mass ( $124 \pm 10$  g), which was unlikely to have impacted the foraging and breeding parameters of the equipped individuals [31]. Individuals were weighed ( $\pm 2$  g; Pesola), and bill, tarsus ( $\pm 0.1$  mm; Vernier callipers) and wing length ( $\pm 1$  mm; ruler) were measured.

To determine the at-sea distribution of fairy prions during the non-breeding period, adult birds (N individuals = 21) were equipped with leg-mounted GLS (Migrate Technology, model C65, United Kingdom). The total mass of logger attachments corresponded to  $1.2 \pm 0.1\%$  of body mass of the equipped birds. Breeding individuals were equipped during the breeding season and were recaptured during the following breeding season (individuals were captured when attending their burrow). In addition, the timing of wing moult was inferred from information provided by the GLS on the daily proportion of time spent on the sea surface (wet and dry sensor; sampled every 30 s and summarized by 4 hour blocks). Since flight feather renewal directly affects flying ability [37], the peak of time spent on the water during the non-breeding period was used to identify the period when fairy prions moult their wing flight feathers. Finally, the dates of last and first burrow attendance, as well as the periods of burrow attendance during the non-breeding period, were determined by combining information from the GLS of activity (wet-dry) and movement data (presence of the bird in the breeding area) [38]. When a burrow attendance was detected during the non-breeding period, it was not possible to confirm that the individual had returned to the exact same breeding colony due to the low spatial accuracy of GLS [20]. However, fairy prions are highly philopatric at the colony level [39], and therefore, it was assumed that tracked individuals were attending burrows at their colony during the non-breeding season.

When individuals were recaptured, six body feathers and blood (0.2 mL from the brachial vein) were collected for stable isotope analysis. Stable isotope ratios of carbon ( $\delta^{13}\text{C}$ )

and nitrogen ( $\delta^{15}\text{N}$ ) in whole blood and body feathers were used as proxies of foraging habitat and diet/trophic level, respectively. Specifically, isotopic values of whole blood (hereafter blood) reflect dietary integration of approximately two to four weeks, while body feathers reflect dietary intake when they were synthesized [40] from the end of the breeding season and throughout the non-breeding period [9]. Therefore, isotopic values of blood were used to determine the trophic ecology of the fairy prion throughout the breeding season (incubation and chick-rearing), while body feathers were used for the non-breeding period. One whole body feather per individual was analysed to determine the inter-annual variations. In addition, in 2018-2019, four whole body feathers per individual were analysed to investigate intra-individual variation.

## 2.2. Data processing and analyses

All data analyses were processed within the R statistical environment [41]. For GPS data, a speed filter with a threshold at  $20 \text{ m}\cdot\text{s}^{-1}$  was applied to remove erroneous locations [42]. Because of poor satellite reception when the birds are feeding or sitting on the water, linear interpolation was applied to correct for unequal sampling frequencies between foraging and commuting. For each complete foraging trip (defined as the time spent at sea between the departure from, and the return to, the burrow), the following basic parameters were calculated: trip duration (h), total horizontal distance travelled (km), and maximum distance from the colony (km). Incomplete trips, where birds started to return towards the colony but the device stopped before the end of the trip, were only used to estimate maximum distance from the colony. During the chick-rearing period, trips were classified in two categories based on the data distribution of trip duration: short ( $\leq 2$  d at sea) or long ( $> 2$  d at sea). A dual foraging strategy (alternating short and long trips) is common in procellariiform species, including prions [43].



The expectation maximization binary clustering (EMBC) was used to infer fairy prion at-sea foraging behaviour (R package *EMbC*; [41, 44]). This method classifies four different movement types based on travel speed and turning angle between subsequent locations: travelling–commuting (high-speed low turn, HL), resting on the water (low-speed low turn, LL), and intensive (low-speed high turn, LH) and extensive searching (high-speed high turn, HH). This method has been shown to be well suited to interpreting ecologically meaningful behaviours from movement data for a range of procellariiform species [45-47].

Processing and calculations of GLS data were conducted using the *GeoLight* package in the R statistical environment [41, 48]. The device records the maximum light intensity for each 5 min interval, and the determination of morning and evening twilights enables longitude (timing of local midday and midnight) and latitude (duration of day and night) to be estimated, providing two positions per day with an average accuracy of  $186 \pm 114$  km (mean  $\pm$  SD; [20]). Before spatial analyses were conducted, data for two weeks before and after the autumn and spring equinoxes were excluded because latitude estimations around these periods are unreliable [49]. The dates of last and first burrow attendance were determined by combining movement data (presence of the bird within 200 km from the breeding colony), information on activity (wet-dry: 100% dry for a period  $> 8$  h) and/or light sensor (continuous darkness during day time). These data were then used to estimate the duration and the total distance travelled during the post-breeding migration. The moulting period of flight feathers was determined for each individual using the period of maximum proportion of time spent on the water (wet-dry sensor being wet  $> 90\%$  per day; [37]). Wet-dry data were sampled every 30 s with the number of samples wet and maximum conductivity recorded every 4 h.

For both GPS and GLS data, filtered locations were used to generate kernel utilization distribution (UD) estimates. For GPS data, a smoothing parameter of  $h = 0.2$  was used with a grid of  $0.1^\circ \times 0.1^\circ$  cells (to avoid over-fragmentation), while for GLS data a  $h$  of 1.8 was

selected (corresponding to a search radius of ~ 200 km) with a 1° x 1° grid cell size (based on the mean accuracy of the device). The 50% (core foraging area) and 95% (home range) kernel UD contours were obtained. Spatial analyses were performed using the *adehabitatHR* R package [41, 50].

For stable isotope analyses, blood samples were freeze-dried, ground to powder and homogenized. Body feathers were cleaned of surface lipids and contaminants using a 2:1 chloroform:methanol solution in a ultrasonic bath, followed by two successive methanol rinses and air dried 24 h at 50°C [51]. Each feather was then cut with scissors to produce a fine powder for homogenization before carbon and nitrogen isotope ratio determination using a continuous flow mass spectrometer (Delta V Plus or Delta V Advantage both with a ConFlo IV interface, Thermo Scientific, Bremen, Germany) coupled to an elemental analyser (Flash 2000 or Flash EA 1112, Thermo Scientific, Milan, Italy) at the LIENSs laboratory (La Rochelle Université, France). Stable isotope values were expressed in conventional notation ( $\delta X = [(R_{\text{sample}}/R_{\text{standard}}) - 1]$ ) where  $X$  is  $^{13}\text{C}$  or  $^{15}\text{N}$  and  $R$  represent the corresponding ratio  $^{15}\text{N}/^{14}\text{N}$  or  $^{13}\text{C}/^{12}\text{C}$ .  $R_{\text{standard}}$  values were based on Vienna Pee Dee Belemnite for  $^{13}\text{C}$ , and atmospheric nitrogen ( $\text{N}_2$ ) for  $^{15}\text{N}$ . Replicates of internal laboratory standards (Caffeine USGS-61 and USGS-62) indicate measurement errors < 0.10 ‰ for  $\delta^{13}\text{C}$  and 0.15 ‰ for  $\delta^{15}\text{N}$ .

All statistical analyses were conducted in the R statistical environment [41]. Inter-annual variations in trip parameters (trip duration, total distance travelled, maximum distance travelled, migration duration), behaviours (HH, HL, LH, LL) and isotopic values (whole blood and feathers) were tested using analyses of variance (ANOVA), and post-hoc tests were conducted using t-tests (parametric), or Kurskal-Wallis and Mann-Whitney U tests (non-parametric) depending on the data distributions. Spearman's rank correlation was used to test whether there was a correlation between the maximum range and total distance

travelled for GPS tracking data (incubation and chick-rearing). To investigate inter-annual variations in at-sea distribution during the breeding season (incubation, chick-rearing short and long trips), the percentage overlap in foraging distribution were estimated using Bhattacharyya's Affinity (BA) index [52] using the *adehabitatHR* R package [50]. BA index (0 signifying no overlap in UDs, and 1 = complete overlap) is a statistical measure for the degree of similarity amongst UDs, and the amount of space-use shared among years.

### 3. Results

#### 3.1. At-sea behaviour during the breeding season

A total of 73 trips (15 during incubation and 58 during chick-rearing) from 45 birds were obtained. During the incubation period, trip duration was  $> 5$  d (max. 9 d,  $n = 13$ ) in all cases, except for two 1-day trips (Table 1). These short incubation trips were restricted to 150-200 km from the colony whereas, during the majority of incubation trips, all individuals foraged outside Bass Strait (Fig. 1), travelling 300-900 km westward to the continental shelf edge and/or farther west to deep (depth  $> 5\ 000$  m) pelagic regions. Trip duration was strongly correlated with maximum range from the colony (Spearman test:  $\rho = 0.87$ ,  $P < 0.001$ ) and total distance travelled ( $\rho = 0.90$ ,  $P < 0.001$ ).

During the chick-rearing period, individuals alternated between a period of multiple short trips ( $\leq 2$  d) and one long trip (3-4 d) (Table 1). Short chick-rearing trips represented the majority of foraging trips (81%), and were all located within Bass Strait (50-200 km from the colony, depth  $< 100$  m; Fig. 1). During long foraging trips, individuals mainly foraged along the continental shelf-edge, 250-300 km west and south-west from the colony (Fig. 1).

For all foraging trips, during incubation and chick-rearing periods, trips were characterised by long commuting movements interrupted by active area-restricted search behaviour. Of the four behavioural categories determined with the EMBC methods, travelling

(high speed, low turn;  $48 \pm 11\%$ ) and resting (low speed, low turn;  $34 \pm 12\%$ ) were proportionally the most dominant behaviours (Table 1), while intensive (low speed, high turn;  $11 \pm 8\%$ ) and extensive searching (high speed, high turn;  $6 \pm 4\%$ ) represented a smaller proportion of at-sea behaviours. The proportion of time spent in intensive foraging was overall higher during the day than during the night (Fig. 2; Table S1; *t*-tests:  $t_{125.09} = 4.756$ ,  $P < 0.001$ ). Conversely, individuals spent proportionally more time travelling at night than during the day (*t*-tests:  $t_{112.8} = -5.863$ ,  $P < 0.001$ ). During both incubation and chick-rearing (short and long trips), individuals spent proportionally more time flying around sunrise (Fig. 2).

There was limited inter-annual variation in the at-sea distribution during the incubation period and the long trips of the chick-rearing period (Fig. 3). However, for these two groups, the low sample size precluded further statistical comparisons (Table S2). For short trips during the chick-rearing period, individuals displayed important variations between years, both in the at-sea distribution (BA index  $< 0.1$ ) and trip parameters (Fig. 3; Table S2). During the two consecutive breeding seasons of 2018/19 and 2019/20, individuals foraged twice as far from the colony than in 2017/18 and 2020/21, which was associated with longer trip durations and total distance travelled per trip (Table S2). Similarly, individuals spent proportionally more time travelling and less time foraging in 2018/19 and 2019/20 than in 2017/18 and 2020/21 (Table S2).

### 3.2. At-sea movements during the non-breeding season

A total of 35 GLS were deployed, of which 23 were retrieved (65.7% retrieval rate). Four GLS were excluded from the spatial analyses as they only recorded for a short period of time after deployment ( $< 3$  months). After the end of the breeding period, all the individuals tracked with GLS devices migrated west or south-west of Bass Strait (Fig. 4). Post-breeding

departure ranged from mid-November to early February, depending on the breeding success of the individuals (failed vs successful breeders). All successful breeders (62% of all equipped individuals) departed between 22 January and 03 February. Both failed and successful breeders travelled west 1 to 2 d after their last burrow attendance and moved rapidly 1500 - 2500 km from the colony (Fig. S1). The peak of maximum distance from the colony coincided with a higher daily proportion of time spent on the water (Fig. S1).

After 2-3 months spent in the distal area of their post-breeding migration, individuals moved back towards Bass Strait, and returned to a burrow on average  $125 \pm 39$  d after their last burrow attendance (Table 2; Fig. S1). Although failed breeders returned slightly earlier than successful breeders ( $114 \pm 49$  and  $134 \pm 31$  d, respectively; Mann-Whitney  $U$  test:  $U = 67$ ,  $P = 0.153$ ), both groups displayed important inter-individual variation with birds returning to the colony for the first time from late February to early July. Once individuals return to the colony, and for the rest of the non-breeding period, all individuals remained in closer proximity to the colony than during the post-breeding migration. The core distribution area (50% kernel UD) was restricted to the western part of Bass Strait and along the continental shelf-edge (Fig. 4). During this period, the daily proportion of time spent on the water by individuals decreased to under 50% (Fig. S1).

### 3.3. Isotopic niche

There was substantial variation in stable isotope values for both blood (incubation and chick-rearing periods) and feathers (non-breeding period) (Fig. 5). For blood samples, the large isotopic niche occupied by fairy prions was mostly explained by important inter-annual variation, for both  $\delta^{13}\text{C}$  and  $\delta^{15}\text{N}$  (Table 3). In particular, during chick-rearing,  $\delta^{15}\text{N}$  varied from  $11.0 \pm 0.7$  ‰ in 2018-2019 to  $13.5 \pm 0.5$  ‰ in 2017-2018 (Fig. S2). Conversely, stable isotope values in body feathers did not vary significantly between years (Table 3). Instead,

within each year, the analysis of one body feather per individual resulted in substantial inter-individual variation for both  $\delta^{13}\text{C}$  and  $\delta^{15}\text{N}$ . However, the analysis of four feathers per individual in 2018-2019 revealed large intra-individual variations in  $\delta^{13}\text{C}$  and  $\delta^{15}\text{N}$ , exceeding 1.7 and 6.7 ‰, respectively (Fig. S3).

#### 4. Discussion

Using four years of GPS tracking, the present study provides the first detailed information of at-sea movements during the breeding season of a species from the genus *Pachyptila*, the fairy prion. In addition, while this species was not known to migrate during the non-breeding period [21], the analysis of winter distribution revealed a clear post-breeding migration during the first 3-5 months of this period. This detailed information, combined with the data on their isotopic niche and moult patterns, provides crucial knowledge about a super-abundant but still under-studied genus.

##### 4.1. Breeding season

During the breeding season, individuals foraged primarily along the continental shelf-edge 200-300 km from the colony, but also used pelagic waters (500-900 km from the colony) and continental shelf areas (within Bass Strait). This distribution matches the at-sea observation of prions during boat surveys [55], with high concentrations of individuals found along the productive waters of north-west Tasmania [56]. This area is part of the Great South Australian Coastal Upwelling System [57], which is a key feature for several seabird species such as the shy albatross (*Thalassarche cauta*; [58]).

During this period, the maximum foraging distance of fairy prions from Kanowna Island appeared to be in the same range as other species of the genus *Pachyptila* elsewhere [12, 17]. This range is likely to be correlated to the threshold between finding a profitable

foraging area without further extending the duration of the trip [43]. However, fairy prions from Poor Knights Islands (New Zealand) performed substantially shorter trips during incubation compared to those in the present study (2.4 d and 5.7 d, respectively; [21]). This corresponds to the presence of a more local foraging area in northern New Zealand compared to Kanowna Island, mirroring the differences in foraging behaviour observed between the populations of common diving petrels (*Pelecanoides urinatrix*) from these two breeding areas [31, 59].

During the chick-rearing period, individuals repeated short trips of 1-2 d and long trips of 3-5 d. Despite some inter-annual variations, short trips were exclusively performed within Bass Strait, west and south-west of the colony. During long trips, individuals travelled farther west, along the continental shelf-edge. Most procellariiform species use a similar bimodal foraging strategy when rearing chicks, alternating short trips close to the colony with longer foraging trips to greater distances [43]. Such a strategy appears to be a trade-off between provisioning chicks regularly and maintaining adult body condition throughout the breeding season. Net energy transfer to the chicks is higher with short trips but at the cost of the adult's body reserves [43]. During long trips, adults restore their body condition by foraging in or towards highly productive areas such as frontal zones or shelf slopes [60, 61].

During both incubation and chick-rearing trips, individuals spent a greater proportion of time travelling around sunrise. Leaving the nest before the first light is characteristic of small burrowing petrels and is thought to be a strategy to minimise the risk of predation on land [21]. Although the proportion of intensive searching was higher during the day, this activity also persisted at night. Prions are visual predators [12] but, as surface feeders, they rely on the presence of their prey near the surface to access it. At night, despite the limited visibility, the vertical migration of euphausiids may make them more available to prions [62]. Similar activity patterns have been observed for Antarctic prions (*P. desolata*) and blue

petrels (*Halobaena caerulea*) [12], for which increased feeding activity at night was related to their high visual acuity [63].

Results of stable isotope analysis in blood were characterised by substantial inter-annual variations, especially during the chick-rearing period (present study; [22]). Although, such variations may reflect different foraging areas between years [64], this could also suggest modifications in the prey size or prey species consumed [65]. During the breeding periods 2018-2019 and 2019-2020, fairy prions exhibited significantly lower  $\delta^{15}\text{N}$  blood values than in 2017-2018, which also corresponded to longer foraging trip durations. A similar pattern was observed with the sympatric common diving petrel, which was explained by the cascading effects of marine heatwaves in south-eastern Australia [31]. During these two successive breeding seasons, the warmer sea surface temperature is likely to have disrupted the availability of their main prey, the coastal krill, significantly impacting the breeding success of both prion and diving petrel species [33]. The abnormally warm waters induced a shift of dominant zooplanktonic species from energetically rich large bodied cold-water euphausiids (such as coastal krill) to lower quality smaller size subtropical copepods [29].

However, in contrast to the sympatric common diving petrels, fairy prions appeared to buffer the variations in environmental conditions better, owing to their higher flight capacity and the production of stomach oil [33, 66]. Indeed, despite being smaller than common diving petrels, the lower wing load of fairy prions enable them to reach more distant foraging areas [12]. In addition, the production of stomach oil mediates the mass loss of the chick in between meals [67], allowing the adults to extend their foraging trips without detrimental effects to chick survival.

#### 4.2. Migration and wintering distribution



After the breeding period, all the tracked fairy prions from Kanowna Island performed a clear migration 1500 - 3000 km west/south-west of the breeding colony in the vicinity of the sub-tropical front. Similar to broad-billed (*P. vittata*), MacGillivray's (*P. macgillivrayi*) and thin-billed (*P. belcheri*) prions [14, 17], this migration was characterised by a rapid outward movement followed by a relatively stationary period of 2-3 months at the distal point of the migration before a rapid return movement towards the colony 3-5 months after departure. Previously, in contrast to all the other *Pachyptila* species, the fairy prion was considered to not migrate during the non-breeding period [9]. However, this assumption was based only on at-sea observations [21] which did not take into account the breeding status of the birds. In particular, as observed in the present study, adults that failed early during the breeding season returned from migration only a few weeks after the last successful breeders left the colony. This may result in a perceived continuous presence of the species at the colony and in the surrounding waters. These findings emphasise the importance of tracking data in understanding the distribution of seabird species, especially during the critical non-breeding period.

Soon after departure, all tracked prions exhibited a marked increase in time spent on the water coinciding with the distal point of their migration. As previously observed in other prion and small petrel species, this reduced flight activity is likely to be related to intense flight feather moult [17, 37, 38]. This is consistent with the observation at the colony, during the winter period, of birds with fully moulted flight feathers [9]. The occurrence of a flight feather moult period within few months after departure for all individuals, independent of their breeding output (failed or successful breeders), suggests that this moult may be triggered by the end of the individual's reproductive duties. This is similar to the broad-billed prion [17] or the sympatric common diving petrel [38], that show spatial and inter-annual variation in the moult period related to the time of departure in migration.

Body feathers, however, appeared to be renewed throughout a longer period, likely including the late breeding period and most of the non-breeding period. Indeed, results of stable isotope analyses in feathers indicated substantial intra-individual variations. Large differences among body feathers of the same bird suggest that the individual was in different areas when they were synthesised [64]. In the present study, isotopic signatures ranged from coastal to oceanic environments, which is consistent with their migration pattern and the observation of adults starting to moult body feathers before the end of the breeding season and throughout winter [9]. Thin-billed and Antarctic prions display a similar protracted moult of their body feathers throughout several months [37, 68]. A continuous moult of the body feathers allows individuals to progressively renew their plumage while maintaining its key aspects of waterproofness and thermoregulation [69].

After returning from migration (in late February to June), individuals stayed within the general area of the colony (< 1000 km) until the start of the next breeding season. During this period, the at-sea distribution was mostly restricted to western Bass Strait and along the continental shelf edge, matching at-sea survey observations [55]. The large up-welling systems in this area [70] are likely to contribute to the high availability of coastal krill throughout this period [71]. In autumn, this region is known to host large populations of marine predators feeding predominantly on coastal krill, such as short-tailed shearwaters (*Ardenna tenuirostris*; [72]) and blue whales (*Balaenoptera musculus*; [25]).

During this period and throughout winter, individuals returned to a burrow several times for a duration of one night to three consecutive days. Like other prion species, this behaviour could be considered as pre-breeding attendance [73]. However, in the present study, such a scenario seems unlikely as the behaviour occurred up to seven months before the start of the next breeding season. Interestingly, the common diving petrel breeding in the same colony exhibits a very similar pattern, coming back to the colony after a short migration

to Antarctic waters, and attending a burrow several times throughout the non-breeding period [38]. When present at the colony during the non-breeding period, both species exhibit regular high rates of vocalization at night (Fromant et al. unpublished data), which may be linked to territorial behaviour [74]. The potential inter- and/or intra-specific competition for nesting habitat on this island could induce a greater amount of time being spent in the colony during the non-breeding period. Indeed, in south-eastern Australia and New Zealand, fairy prions and common diving petrels are potentially direct rivals for nesting habitat and have been regularly observed fighting in burrows [74].

#### 4.3. Conclusion

The present study highlighted important aspects of fairy prion at-sea distribution and foraging ecology. In particular, the deployment of light sensor geolocators revealed an unsuspected post-breeding migration to the south of Australia, during which individuals likely undergo a rapid moult of flight feathers. In addition to this critical post-breeding migration, the tracking data of fairy prions from Kanowna Island highlighted the importance of the continental shelf-edge waters throughout the year, during both the breeding and non-breeding periods. Topographically driven upwellings are stable features resulting in a spatially and temporally reliable food source, and the several upwelling systems occurring off south-eastern Australia [70] are essential to support the large avian biomass in this area [58]. However, the recent successive marine heatwaves in the region induced substantial effects on the phenology and breeding success of fairy prions in the region [33], and it is uncertain how upwelling mechanisms and marine heatwaves are related. This is particularly concerning as the frequency and intensity of such extreme events are predicted to increase in the near future [28]. In addition, although recent studies showed that fairy prions are able to maintain a

relatively good breeding success even during poor years [33, 66], the long-term consequences of marine heatwaves on juveniles and adults survival remain totally unknown.

**Acknowledgments.** Fieldwork was conducted on Wamoon country, land of the Boon Wurrung, Bunurong and Gunaikurnai people. The authors thank the numerous field volunteers that took part in the data collection over the four field seasons (A. Lec’hvien, F. Chevallier, C. Barrier-Louisau, R. Dunn, L. Slaughter, B. Gardner and J. Blakeway), and S. Best for logistical support. Thanks to G. Guillou from the Plateforme Analyses Isotopiques of the LIENSs laboratory for running stable isotope analysis. Thanks to the CPER (Contrat de Projet Etat-Région) and the FEDER (Fonds Européen de Développement Régional) for funding the IRMS of LIENSs laboratory. The IUF (Institut Universitaire de France) is acknowledged for its support to P. Bustamante as a Senior Member.

### **Author Contributions**

AF participated in the conception and coordination of the study, collected field data, did the statistical analyses and drafted the manuscript; YHE, TP participated in the data collection, helped with the drafting of the manuscript and critical revision; PB was involved in stable isotopes analysis, helped with the drafting of the manuscript and critical revision; JPYA participated in the conception and coordination of the study, helped with the drafting of the manuscript and critical revision.

### **Funding statement**

This study was supported financially by Deakin University, Sea World Research and Rescue Foundation Inc. and Birdlife Australia.

## **Competing Interests**

The authors declare there are no competing interests

## **Data accessibility**

Our data are available within the Dryad Digital

Repository: <https://datadryad.org/stash/share/Hw0QpjN6ZomWVWk8n02OH8FdXNCVlseShZPv2W4h8To>

## **Ethics statement**

All animal handling and instrumentation was approved by the Deakin Animal Ethics (Approval B16-2017) and DELWP Wildlife Research (Permit 100084552).

## **References**

1. Hunt JG (1990) The pelagic distribution of marine birds in a heterogeneous environment. *Polar Research* 8:43-54.
2. Weimerskirch H (2007) Are seabirds foraging for unpredictable resources? *Deep-Sea Research II* 54:211–223.
3. Croxall JP, Butchart SHM, Lascelles B, Stattersfield AJ, Sullivan B, Symes A, Taylor P (2012) Seabird conservation status, threats and priority actions: a global assessment. *Bird Conservation International* 22:1–36.
4. Sydeman WJ, Thompson SA, and Kitaysky A (2012) Seabirds and climate change: roadmap for the future. *Marine Ecology Progress Series* 454:107–117.
5. Chambers LE, Devney CA, Congdon BC, Dunlop N, Woehler E, Dann P (2011) Observed and predicted effects of climate on Australian seabirds. *Emu* 111:235–251.

6. López-López P (2016) Individual-based tracking systems in ornithology: welcome to the era of big data. *Ardeola* 63(1):103–136.
7. Bernard A, Rodrigues AS, Cazalis V, Grémillet D (2021) Toward a global strategy for seabird tracking. *Conservation Letters* 14:e12804.
8. Rodríguez A, Arcos JM, Bretagnolle V et al. (2019) Future directions in conservation research on petrels and shearwaters. *Frontiers in Marine Science* 6:9.
9. Marchant S, Higgins PJ (1990) *Handbook of Australian, New Zealand and Antarctic birds*. Vol. 1. Oxford University Press, Melbourne.
10. Brooke M (2004) *Albatrosses and Petrels Across the World*. Oxford University Press, Oxford.
11. Shirihai H (2007) *A complete guide to Antarctic wildlife*, 2nd edn. A&C Black, London.
12. Navarro J, Votier SC, Aguzzi J, Chiesa JJ, Forero MG, Phillips RA (2013) Ecological segregation in space, time and trophic niche of sympatric planktivorous petrels. *PloS ONE* 8:e62897.
13. Navarro J, Cardador L, Brown R, Phillips RA (2015) Spatial distribution and ecological niches of non-breeding planktivorous petrels. *Scientific Reports* 5:12164.  
<https://doi.org/10.1038/srep12164>
14. Quillfeldt P, Cherel Y, Delord, Weimerskirch H (2015) Cool, cold or colder? Spatial segregation of prions and blue petrels is explained by differences in preferred sea surface temperatures. *Biology Letters* 11:20141090.  
<http://dx.doi.org/10.1098/rsbl.2014.1090>
15. Quillfeldt P, Cherel Y, Masello JF, Delord K, McGill RAR, Furness RW, Moodley Y, Weimerskirch H (2015) Half a World Apart? Overlap in Nonbreeding Distributions of Atlantic and Indian Ocean Thin-Billed Prions. *PloS ONE*. 10:e0125007.  
<https://doi.org/10.1371/journal.pone.0125007>

16. Grecian WJ, Taylor GA, Loh G, McGill RAR, Miskelly CM, Phillips RA, Thompson DR, Furness RW (2016) Contrasting migratory responses of two closely-related seabirds to long-term climate change. *Marine Ecology Progress Series* 559:231–242.
17. Jones CW, Phillips RA, Grecian WJ, Ryan PG (2020) Ecological segregation of two superabundant, morphologically similar, sister seabird taxa breeding in sympatry. *Marine Biology* 167:45. <https://doi.org/10.1007/s00227-020-3645-7>
18. Catry T, Ramos JA, Le Corre M, Phillips RA (2009) Movements, at-sea distribution and behaviour of a tropical pelagic seabird: the wedge-tailed shearwater in the western Indian Ocean. *Marine Ecology Progress Series* 391:231–242.
19. Hedd A, Pollet IL, Mauck RA, Burke CM, Mallory ML, et al. (2018) Foraging areas, offshore habitat use, and colony overlap by incubating Leach’s storm-petrels *Oceanodroma leucorhoa* in the Northwest Atlantic. *PloS ONE* 13(5):e0194389.
20. Phillips RA, Silk JRD, Croxall JP, Afanasyev V, Briggs DR (2004) Accuracy of geolocation estimates for flying seabirds. *Marine Ecology Progress Series* 266:265–272. <https://doi.org/10.3354/meps266265>
21. Harper PC (1976) Breeding biology of the fairy prion (*Pachyptila turtur*) at the Poor Knights Islands, New Zealand. *New Zealand Journal of Zoology* 3(4):351–371.
22. Fromant A, Schumann N, Dann P, Cherel Y, Arnould JPY (2020) Trophic niches of a seabird assemblage in Bass Strait, south-eastern Australia. *Peerj* 8:e8700. <https://doi.org/10.7717/peerj.8700>
23. Young JW, Jordan AR, Bobbi C, Johannes RE, Haskard K, Pullen G (1993) Seasonal and interannual variability in krill (*Nyctiphanes australis*) stocks and their relationship to the fishery for jack mackerel (*Trachurus declivis*) off eastern Tasmania, Australia. *Marine Biology* 116:9–18. <https://doi.org/10.1007/bf00350726>

24. Mills JA, Yarrall JW, Bradford-Grieve JM, Uddstrom MJ, Renwick JA, Merila J (2008) The impact of climate fluctuation on food availability and reproductive performance of the planktivorous red-billed gull *Larus novaehollandiae scopulinus*. *Journal of Animal Ecology* 77:1129–1142. <https://doi.org/10.1111/j.1365-2656.2008.01383.x>
25. Gill PC (2002) A blue whale (*Balaenoptera musculus*) feeding ground in a southern Australian coastal upwelling zone. *Journal of Cetacean Research and Management* 4(2):179–184.
26. Ritz D, Hosie G (1982) Production of the euphausiid *Nyctiphanes australis* in Storm Bay, south-eastern Tasmania. *Marine Biology* 68:103–108
27. Cai W, Shi G, Cowan T, Bi D, Ribbe J (2005) The response of the Southern Annular Mode, the East Australian Current, and the southern mid-latitude ocean circulation to global warming. *Geophysical Research Letters* 32:94–97.
28. Oliver ECJ, Burrows MT, Donat MG, Sen Gupta A, Alexander LV, Perkins-Kirkpatrick SE, et al. (2019) Projected marine heatwaves in the 21st century and the potential for ecological impact. *Frontiers in Marine Science* 6:1–12.  
<https://doi.org/10.3389/fmars.2019.00734>
29. Evans R, Lea MA, Hindell MA, Swadling KM (2020) Significant shifts in coastal zooplankton populations through the 2015/16 Tasman Sea marine heatwave. *Estuarine, Coastal and Shelf Science* 235:106538.  
<https://doi.org/10.1016/j.ecss.2019.106538>
30. Sanford E, Sones JL, García-Reyes M, Goddard JH, Largier JL (2019) Widespread shifts in the coastal biota of northern California during the 2014–2016 marine heatwaves. *Scientific Reports* 9:4216. <https://doi.org/10.1038/s41598-019-40784-3>
31. Fromant A, Delord K, Bost CA, Eizenberg YH, Botha JA, Cherel Y, et al. (2021) Impact of extreme environmental conditions: foraging behaviour and trophic ecology



- responses of a diving seabird, the common diving petrel. *Progress in Oceanography* 198:102676. <https://doi.org/10.1016/j.pocean.2021.102676>
32. Sheard K (1953) Taxonomy, distribution, and development of Euphausiacea (Crustacea). Report of British Australian and New Zealand Antarctic Research Expedition Series B (Zoology and Botany) 8:1–72.
33. Eizenberg YH, Fromant A, Lec'hvien A, Arnould JP (2021) Contrasting impacts of environmental variability on the breeding biology of two sympatric small procellariiform seabirds in south-eastern Australia. *PLoS ONE* 16(9):e0250916. <https://doi.org/10.1371/journal.pone.0250916>
34. Ross GJB, Burbidge AA, Brothers N, Canty P, Dann P, Fuller PJ, et al. (2001) The status of Australia's seabirds. In: Zann LP, Kailola P, eds. The state of the marine environment report for Australia technical annex: 1 the marine environment. Ocean Rescue 2000. Department of the Environment, Sport and Territories, Canberra 167–182
35. Fromant A, Eizenberg YH, Jessop R, Lec'hvien A, Geeson JJ, Arnould JPY (2020) Colony relocation of Greater Crested Terns *Thalasseus bergii* in Bass Strait, south-eastern Australia. *Australian Field Ornithology* 37:166–171. <https://doi.org/10.20938/afo37166171>
36. Schumann N, Dann P, Arnould JPY (2014) The significance of northern-central Bass Strait in south-eastern Australia as habitat for burrowing seabirds. *Emu* 114:234–240. <https://doi.org/10.1071/MU13048>.
37. Cherel Y, Quilfeldt P, Delord K, Weimerskirch H (2016) Combination of at-sea activity, geolocation and feather stable isotopes documents where and when seabirds molt. *Frontiers in Ecology and Evolution* 4:3. <https://doi.org/10.3389/fevo.2016.00003>

38. Fromant A, Bost CA, Bustamante P, Carravieri A, Cherel Y, Delord K, et al. (2020) Temporal and spatial differences in the post-breeding behaviour of a ubiquitous Southern Hemisphere seabird, the common diving petrel. *Royal Society Open Science* 7:200670. <https://doi.org/10.6084/m9.figshare.c.520853>
39. Ovenden JR, Wust-Saucy A, Bywater R, Brothers N, White RWG (1991) Genetic evidence for philopatry in a colonially nesting seabird, the Fairy Prion (*Pachyptila turtur*). *The Auk* 108(3):688–694.
40. Cherel Y, Hobson KA, Weimerskirch H (2000) Using stable-isotope analysis of feathers to distinguish moulting and breeding origins of seabirds. *Oecologia* 122:155–162. <https://doi.org/10.1007/pl0000884>
41. R Core Team (2021) R: A language and environment for statistical computing. R Foundation for statistical computing, Vienna, Austria
42. Spear LB, Ainley DG (1997) Flight behaviour of seabirds in relation to wind direction and wing morphology. *Ibis* 139:221–233. <https://doi.org/10.1111/j.1474-919X.1997.tb04620.x>
43. Weimerskirch H, Chastel O, Ackermann L, Chaurand T, Cuenot-Chaillet F, Hindermeyer X, et al. (1994) Alternate long and short foraging trips in pelagic seabird parents. *Animal Behaviour* 47:472–476
44. Garriga J, Palmer JR, Oltra A, Bartumeus F (2016) Expectation-maximization binary clustering for behavioural annotation. *PloS ONE* 11(3):e0151984.
45. de Grissac S, Bartumeus F, Cox SL, Weimerskirch H (2017) Early life foraging: behavioural responses of newly fledged albatrosses to environmental conditions. *Ecology and Evolution* 7:6766–6778.

46. Clay TA, Opper S, Lavers JL, Phillips RA, Brooke MdL (2019) Divergent foraging strategies during incubation of an unusually wide-ranging seabird, the Murphy's petrel. *Marine Biology* 166:8.
47. Weimerskirch H, de Grissac S, Ravache A, et al. (2020) At-sea movements of wedge-tailed shearwaters during and outside the breeding season from four colonies in New Caledonia. *Marine Ecology Progress Series* 633:225–238.
48. Lisovski S, Hewson CM, Klaassen RHG, Korner-Nievergelt F, Kristensen MW, Hahn S (2012) Geolocation by light: accuracy and precision affected by environmental factors. *Methods Ecology and Evolution* 3:603-612. <https://doi.org/10.1111/j.2041-210X.2012.00185.x>
49. Wilson RP, Ducamp JJ, Rees WG, Culik BM, Niekamp K, Priede IG, Swift SM (1992) Estimation of location: global coverage using light intensity. In Priede, IMSS (ed.) *Wildlife Telemetry: Remote Monitoring and Tracking of Animals*: 131–134. Chichester: Ellis Howard
50. Calenge C (2006) The package "adehabitat" for the R software: A tool for the analysis of space and habitat use by animals. *Ecological Modelling* 197:516–519. <https://doi.org/10.1016/j.ecolmodel.2006.03.017>
51. Fromant A, Carravieri A, Bustamante P, Labadie P, Budzinski H, Peluhet L, et al. (2016) Wide range of metallic and organic contaminants in various tissues of the Antarctic prion, a planktonophagous seabird from the Southern Ocean. *Science of the Total Environment* 544:754–764. <https://doi.org/10.1016/j.scitotenv.2015.11.114>
52. Fieberg J, Kochanny CO (2005) Quantifying home-range overlap: the importance of the utilization distribution. *Journal of Wildlife Management* 69(4):1346–1359.
53. Kim YS, Orsi AH (2014) On the variability of Antarctic Circumpolar Current Fronts inferred from 1992–2011 altimetry. *Journal of Physical Oceanography* 44:3054–3071.

54. Cherel Y, Connan M, Jaeger A, Richard P (2014) Seabird year-round and historical feeding ecology: blood and feather  $\delta^{13}\text{C}$  and  $\delta^{15}\text{N}$  values document foraging plasticity of small sympatric petrels. *Marine Ecology Progress Series* 505:267–280.
55. Reid TA, Hindell MA, Eades DW, Newman M (2002) Seabird Atlas of South-eastern Australian Waters. *Birds Australia Monograph* 4. Birds Australia, Melbourne.
56. Kämpf J, Kavi A (2017) On the “hidden” phytoplankton blooms on Australia's southern shelves. *Geophysical Research Letters* 44(3):1466–1473.
57. Kämpf J (2015) Phytoplankton blooms on the western shelf of Tasmania: evidence of a highly productive ecosystem. *Ocean Science* 11(1):1–11.
58. Hedd A, Gales R, Brothers N (2001) Foraging strategies of shy albatross *Thalassarche cauta* breeding at Albatross Island, Tasmania, Australia. *Marine Ecology Progress Series* 224:267–282.
59. Dunphy BJ, Vickers SI, Zhang J, Sagar RL, Landers TJ, Bury SJ, et al. (2020) Seabirds as environmental indicators: foraging behaviour and ecophysiology of common diving petrels (*Pelecanoides urinatrix*) reflect local-scale differences in prey availability. *Marine Biology* 167:1–12. <https://doi.org/10.1007/s00227-020-3672-4>
60. Granadeiro JP, Nunes M, Silva MC, Furness RW (1998) Flexible foraging strategy of Cory's shearwater, *Calonectris diomedea*, during the chick-rearing period. *Animal Behaviour* 56:1169–76.
61. Hyrenbach KD, Fernandez P, Anderson DJ (2002) Oceanographic habitats of two sympatric North Pacific albatrosses during the breeding season. *Marine ecology progress series* 233:283–301.
62. Prince PA (1980) The food and feeding ecology of blue petrel (*Halobaena caerulea*) and dove prion (*Pachyptila desolata*). *Journal of Zoology* 190:59–76.

63. Martin GR, Prince PA (2001) Visual fields and foraging in procellariiform seabirds: Sensory aspects of dietary segregation. *Brain, Behavior and Evolution* 57:33–38.
64. Cherel Y, Hobson KA, Weimerskirch H. 2005. Using stable isotopes to study resource acquisition and allocation in procellariiform seabirds. *Oecologia* 145:533–540. <https://doi.org/10.1007/s00442-005-0156-7>.
65. Polito MJ, Trivelpiece WZ, Reiss CS, Trivelpiece SG, Hinke JT, Patterson WP, Emslie SD (2019) Intraspecific variation in a dominant prey species can bias marine predator dietary estimates derived from stable isotope analysis. *Limnology and Oceanography Methods* 17(4):292–303. <https://doi.org/10.1002/lom3.10314>
66. Manno K, Loh G, Van Heezik Y (2014) Buffering against food availability? The physical environment has little influence on breeding performance of fairy prions (*Pachyptila turtur*). *Austral Ecology* 39:548–559. <https://doi.org/10.1111/aec.12115>
67. Roby DD, Taylor JR, Place AR (1997) Significance of stomach oil for reproduction in seabirds: an interspecies cross-fostering experiment. *The Auk* 114(4):725–736.
68. Carravieri A, Bustamante P, Churlaud C, Fromant A, Cherel Y (2014) Moulting patterns drive within-individual variations of stable isotopes and mercury in seabird body feathers: implications for monitoring of the marine environment. *Marine Biology* 161:963–968. <https://doi.org/10.1007/s00227-014-2394-x>
69. Murphy ME (1996) Energetics and nutrition of molt. In *Avian energetics and nutritional ecology*: 158–198. Boston, MA: Springer
70. Huang Z, Wang XH (2019) Mapping the spatial and temporal variability of the upwelling systems of the Australian south-eastern coast using 14-year of MODIS data. *Remote Sensing of Environment* 227:90–109. <https://doi.org/10.1016/j.rse.2019.04.00>

71. Gill PC, Morrice MG, Page B, Pirzl R, Levings AH, Coyne M (2011) Blue whale habitat selection and within-season distribution in a regional upwelling system off southern Australia. *Marine Ecology Progress Series* 421:243–263.
72. Berlincourt M, Arnould JP (2015) Breeding short-tailed shearwaters buffer local environmental variability in south-eastern Australia by foraging in Antarctic waters. *Movement Ecology* 3(1):1–11.
73. Quillfeldt P, Weimerskirch H, Masello JF, Delord K, McGill RAR, Furness RW, Cherel Y (2019) Behavioural plasticity in the early breeding season of pelagic seabirds - a case study of thin-billed prions from two oceans. *Movement Ecology* 7:1.  
<https://doi.org/10.1186/s40462-019-0147-7>
74. Thoresen AC (1969) Observations on the breeding behaviour of the diving petrel *Pelecanoides u. urinatrix* (Gmelin). *Notornis* 16:241–60.

**Table 1: Trip parameters of GPS tracking (mean  $\pm$  SD) of fairy prion during the incubation and chick-rearing periods at Kanowna Island, south-eastern Australia.** The proportion of the different behaviours were determined using the expectation maximization binary clustering (EMBC) method. LL: low-speed low turn; LH: low-speed high turn; HL: high-speed low turn; HH: high-speed high turn. See Table S2 for inter-annual comparisons.

		<b>Incubation</b>	<b>Short trips</b>	<b>Long trips</b>
(N individuals; n trips)		N = 14; n = 15	N = 27; n = 47	N = 11; n = 11
Trip duration (h)		137 $\pm$ 57	27 $\pm$ 13	89 $\pm$ 10
Total distance travelled (km)		1506 $\pm$ 715	273 $\pm$ 148	1082 $\pm$ 306
Maximum distance from colony (km)		545 $\pm$ 252	108 $\pm$ 55	333 $\pm$ 124
Behaviours Proportion (%)	HH	3.4 $\pm$ 2.1	6.5 $\pm$ 4.4	9.1 $\pm$ 5.1
	HL	47.3 $\pm$ 9.0	46.7 $\pm$ 12.0	54.6 $\pm$ 10.5
	LH	5.3 $\pm$ 3.2	13.1 $\pm$ 7.9	12.1 $\pm$ 6.2
	LL	44.0 $\pm$ 11.5	33.7 $\pm$ 9.9	24.3 $\pm$ 10.7

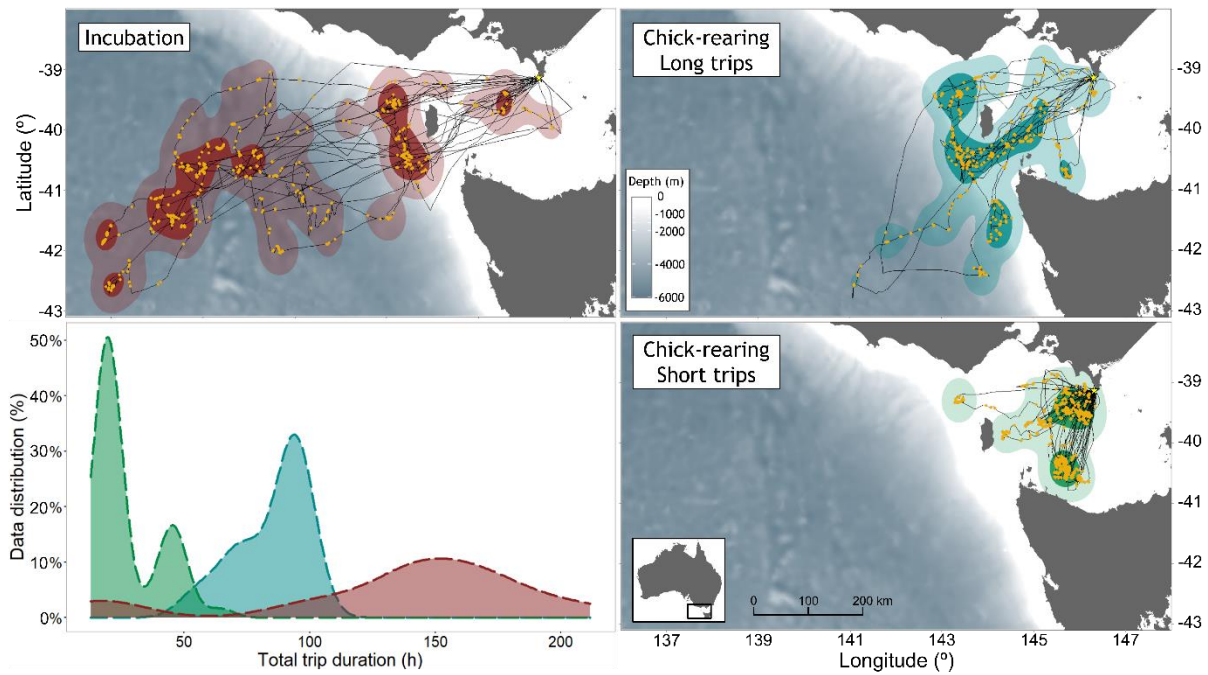
**Table 2: Trip parameters of GLS tracking (mean  $\pm$  SD) of fairy prion during the non-breeding periods at Kanowna Island, south-eastern Australia.**

	<b>2018-2019</b>	<b>2019-2020</b>
<b>N individuals</b>	N = 14	N = 7
Post-breeding migration duration (d)	139 $\pm$ 38	94 $\pm$ 18
Total distance travelled (km)	67 522 $\pm$ 10 988	63 164 $\pm$ 23 312
Maximum distance from colony (km)	1 745 $\pm$ 334	2 010 $\pm$ 408

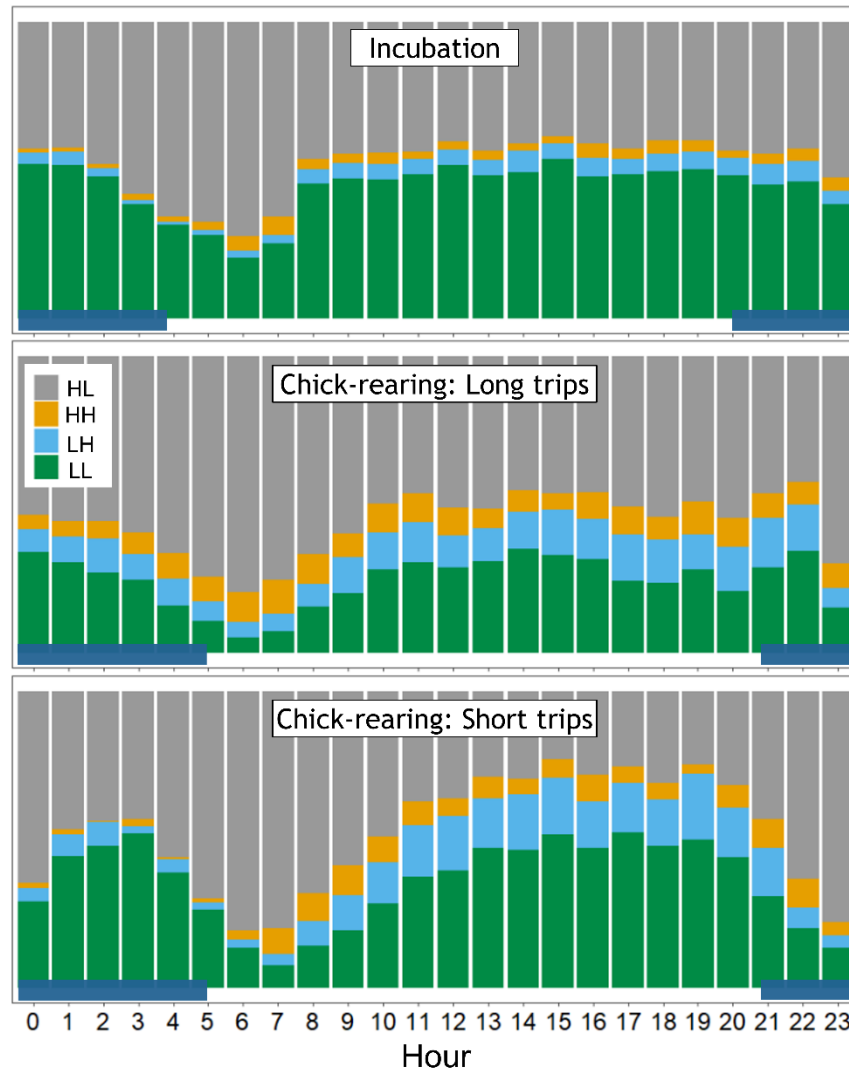


**Table 3: Whole blood and body feather  $\delta^{13}\text{C}$  and  $\delta^{15}\text{N}$  values (means  $\pm$  SD) of fairy prions from Kanowna Island, south-eastern Australia.** Significantly different values (Mann-Whitney  $U$  test:  $P < 0.05$ ) are indicated by different superscript letters/symbols, for comparison between years (row; difference between stages of the annual cycle; \*, # or &), and between incubation and chick-rearing for whole blood values (columns; inter-annual variation; a or b).

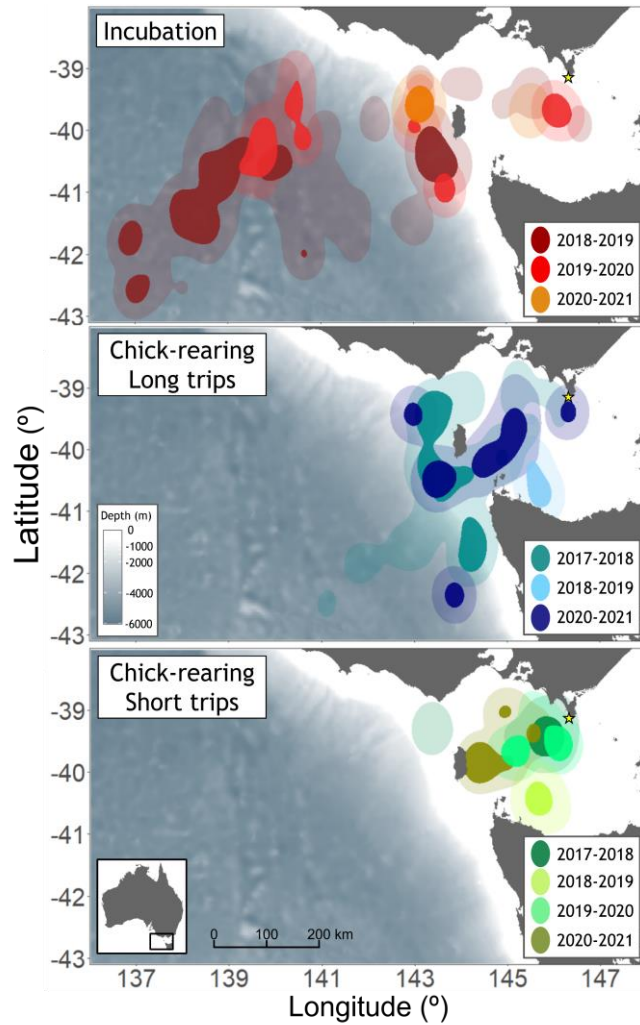
		<b>Inter-breeding (feathers)</b>	<b>Incubation (blood)</b>	<b>Chick-rearing (blood)</b>
$\delta^{13}\text{C}$ (‰)	2017-2018	$-18.0 \pm 0.8^*$ (n = 18)	-	$-20.9 \pm 0.3^*$ (n = 17)
	2018-2019	$-18.1 \pm 0.9^*$ (n = 20)	$-19.8 \pm 0.1^{a*}$ (n = 10)	$-20.6 \pm 0.4^{b\#}$ (n = 12)
	2019-2020	$-17.7 \pm 0.6^*$ (n = 15)	$-18.9 \pm 0.8^{a\#}$ (n = 18)	$-19.3 \pm 0.5^{a\&}$ (n = 13)
$\delta^{15}\text{N}$ (‰)	2017-2018	$12.2 \pm 1.9^*$ (n = 18)	-	$13.5 \pm 0.5^{a*}$ (n = 17)
	2018-2019	$12.0 \pm 2.3^*$ (n = 20)	$11.9 \pm 0.7^{a*}$ (n = 10)	$11.0 \pm 0.7^{b\#}$ (n = 12)
	2019-2020	$12.6 \pm 2.3^*$ (n = 15)	$12.6 \pm 1.1^{a*}$ (n = 18)	$12.9 \pm 1.0^{a*}$ (n = 13)



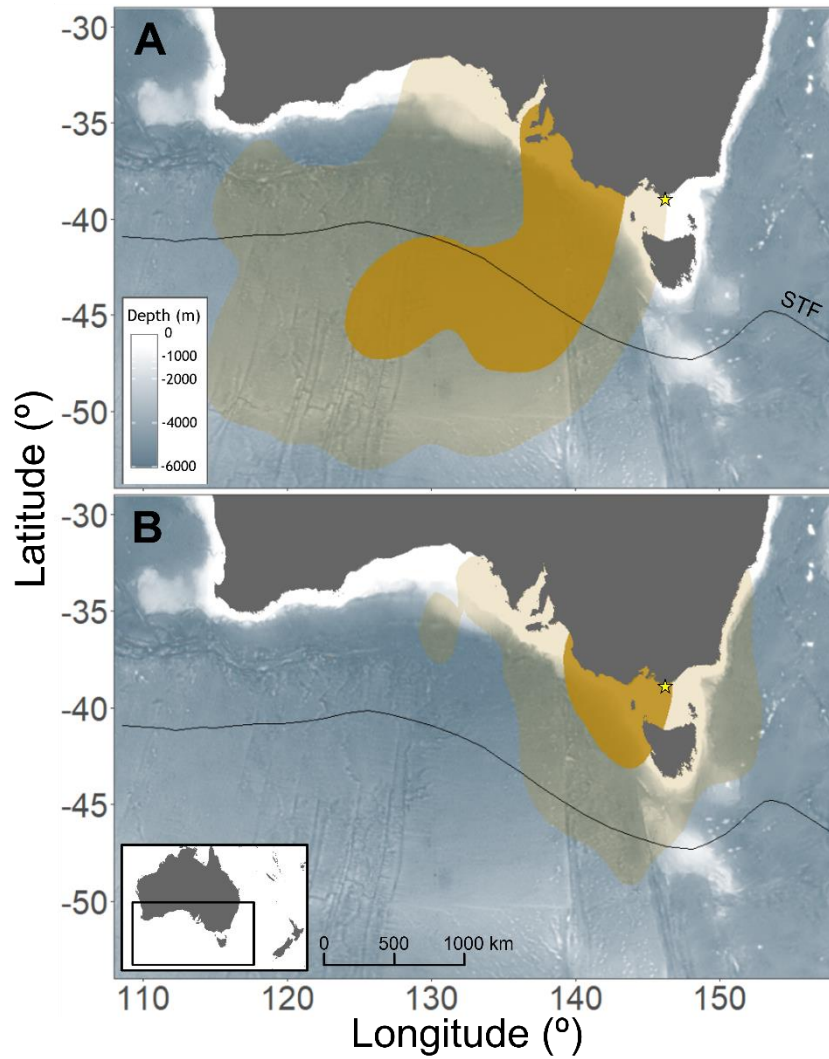
**Figure 1: Foraging kernel density distribution estimated from GPS locations of fairy prions in incubation (upper left) and chick-rearing (upper right and lower right) from Kanowna Island, south-eastern Australia. The lower left panel shows the distribution density of total trip duration for incubation (red) and chick-rearing trips (long = blue; short = green). Dark and faded kernel areas show the 50 and 95% of the kernel utilization distribution, respectively (core area and home range, respectively). Yellow dots indicate when the birds were in intensive foraging (low speed, high turn).**



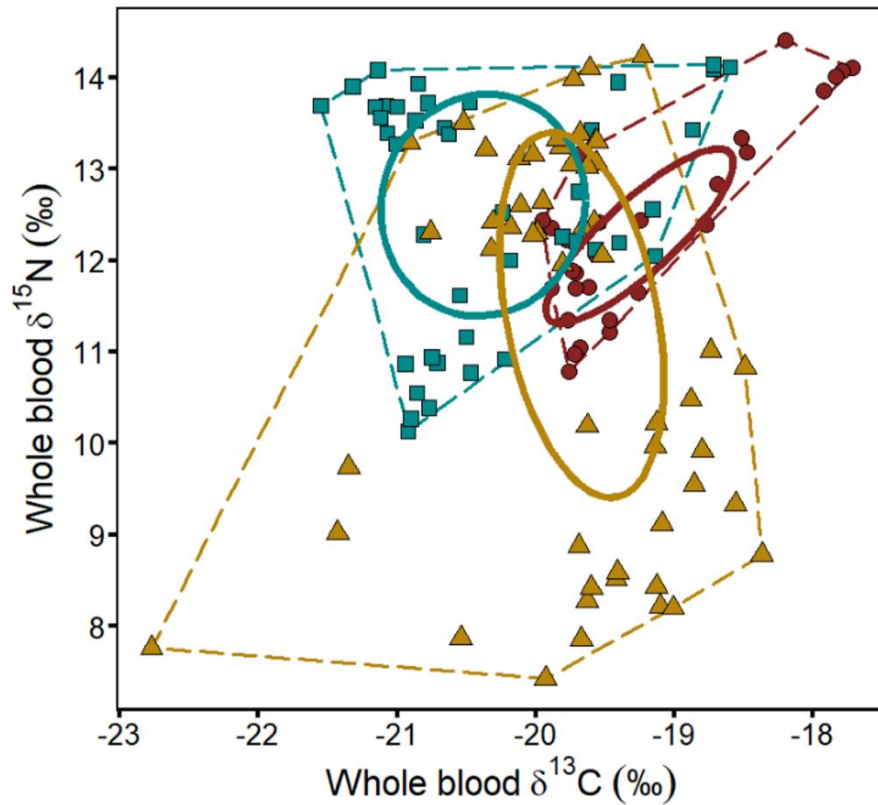
**Figure 2: Hourly proportion of the different behaviours of fairy prions during the incubation and chick-rearing trips (short and long trips).** LL: low-speed low turn; LH: low-speed high turn; HL: high-speed low turn; HH: high-speed high turn. The dark blue area at the bottom of each panel corresponds to night time (from after last lights to before first lights).



**Figure 3: Inter-annual variation of foraging distribution of fairy prions in incubation and chick-rearing (short and long trips) from Kanowna Island, south-eastern Australia.** Each panel shows the foraging kernel density distribution estimated from GPS locations. Dark and faded kernel areas correspond to the 50% (core area) and 95% (home range) of the kernel utilization distribution, respectively.



**Figure 4: Kernel density distribution estimated from GLS locations during the non-breeding period of fairy prions from Kanowna Island, south-eastern Australia.** A: post-breeding migration (from last burrow attendance to first burrow attendance; December-June); B: non-breeding period from the first burrow attendance to the start of the following breeding season (February-October). STF = Subtropical Front [53].



**Figure 5: Whole blood and body feather  $\delta^{13}\text{C}$  and  $\delta^{15}\text{N}$  values of fairy prion from Kanowna Island during the incubation (red dots), chick-rearing (blue squares) and post-breeding periods (yellow triangles). Full lines correspond to the 40% ellipse, and dashed lines to the 100% total convex hull. In order to allow statistical comparisons between blood and feathers, isotopic values of feathers were corrected using mean corrections factors from [54].**

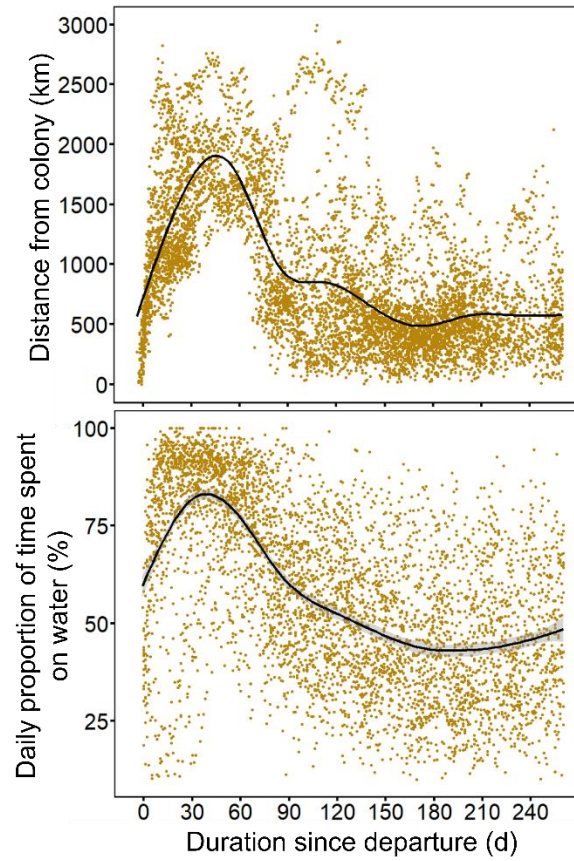
**Table S1: Diurnal and nocturnal proportion of the different behaviours (mean  $\pm$  SD) of fairy prions during the incubation and chick-rearing periods at Kanowna Island, south-eastern Australia.** LL: low-speed low turn; LH: low-speed high turn; HL: high-speed low turn; HH: high-speed high turn.

		<b>Incubation</b>	<b>Short trips</b>	<b>Long trips</b>
<b>% per day (hours)</b>	HH	3.6 $\pm$ 2.6 (41 $\pm$ 35)	6.5 $\pm$ 4.4 (16 $\pm$ 13)	9.7 $\pm$ 5.5 (69 $\pm$ 34)
	HL	45.5 $\pm$ 10.8 (536 $\pm$ 265)	42.1 $\pm$ 13.1 (104 $\pm$ 59)	53.8 $\pm$ 9.9 (395 $\pm$ 103)
	LH	5.8 $\pm$ 3.7 (57 $\pm$ 42)	14.7 $\pm$ 8.9 (34 $\pm$ 21)	12.4 $\pm$ 6.1 (88 $\pm$ 36)
	LL	45.1 $\pm$ 12.5 (482 $\pm$ 216)	36.7 $\pm$ 11.3 (87 $\pm$ 40)	24.1 $\pm$ 10.9 (174 $\pm$ 78)
<b>% per night (hours)</b>	HH	2.9 $\pm$ 1.8 (14 $\pm$ 11)	7.4 $\pm$ 7.8 (4 $\pm$ 3)	7.7 $\pm$ 4.7 (26 $\pm$ 15)
	HL	55.4 $\pm$ 21.6 (264 $\pm$ 143)	64.4 $\pm$ 21.5 (46 $\pm$ 27)	56.4 $\pm$ 13.9 (195 $\pm$ 64)
	LH	3.8 $\pm$ 3.5 (23 $\pm$ 19)	6.5 $\pm$ 6.3 (6 $\pm$ 8)	11.3 $\pm$ 7.0 (37 $\pm$ 23)
	LL	37.9 $\pm$ 21.8 (230 $\pm$ 134)	21.7 $\pm$ 20.8 (24 $\pm$ 35)	24.6 $\pm$ 13.3 (80 $\pm$ 36)

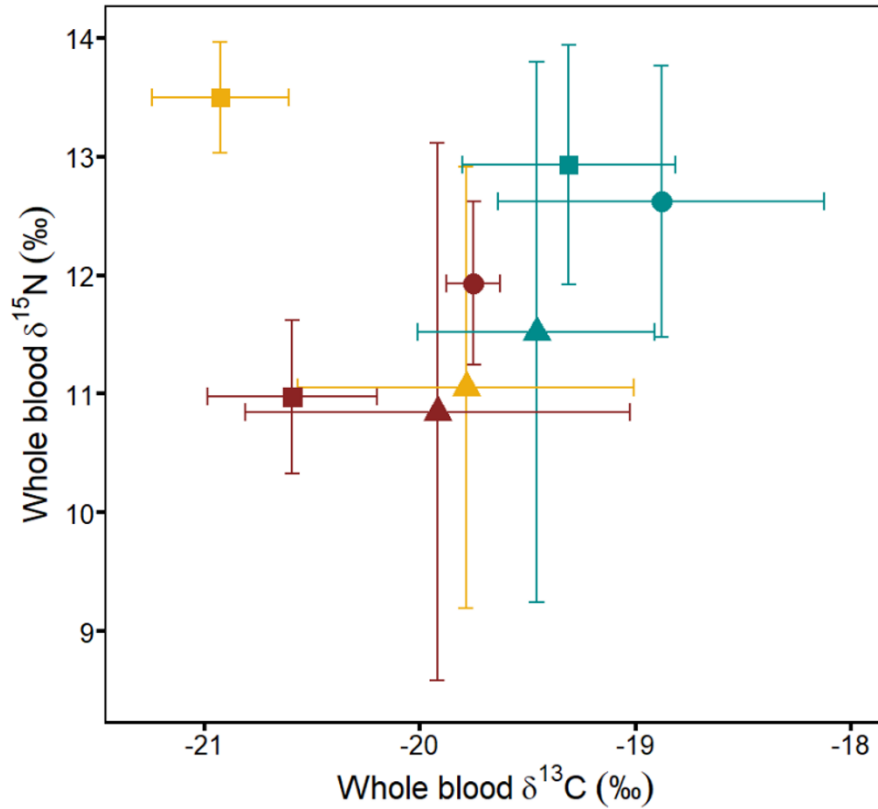
**Table S2: Inter-annual variations of trip parameters (GPS) and proportion of the different behaviours (mean  $\pm$  SD) of fairy prion during the incubation and chick-rearing periods at Kanowna Island, south-eastern Australia.** LL: low-speed low turn; LH: low-speed high turn; HL: high-speed low turn; HH: high-speed high turn.

		Incubation	Short trips	Long trips
Trip duration (h)	2017/18	-	23 $\pm$ 8 <sup>a</sup> (N=12; n = 13)	90 $\pm$ 11 <sup>a</sup> (N = 5; n = 5)
	2018/19	147 $\pm$ 54 (N = 8; n = 9) <sup>a</sup>	41 $\pm$ 13 <sup>b</sup> (N =6; n = 14)	72 (N = 1; n = 1)
	2019/20	149 $\pm$ 34 (N = 3; n = 3) <sup>a</sup>	26 $\pm$ 14 <sup>a</sup> (N = 2; n = 3)	-
	2020/21	79 $\pm$ 88 (N = 2; n = 2)	20 $\pm$ 2 <sup>a</sup> (N = 6; n = 16)	93 $\pm$ 2 <sup>a</sup> (N = 3; n = 3)
Total distance travelled (km)	2017/18	-	197 $\pm$ 144 <sup>a</sup> (N = 12; n = 13)	1178 $\pm$ 233 <sup>a</sup> (N = 5; n = 5)
	2018/19	1756 $\pm$ 647 (N = 8; n = 9) <sup>a</sup>	431 $\pm$ 76 <sup>b</sup> (N = 6; n = 14)	567 (N = 1; n = 1)
	2019/20	1343 $\pm$ 610 (N = 3; n = 3) <sup>a</sup>	322 $\pm$ 178 <sup>bc</sup> (N = 2; n = 3)	-
	2020/21	626 $\pm$ 603 (N=2; n = 2)	188 $\pm$ 61 <sup>ac</sup> (N = 6; n = 16)	1093 $\pm$ 332 <sup>a</sup> (N = 3; n = 3)
Maximum distance from colony (km)	2017/18	-	72 $\pm$ 59 <sup>a</sup> (N=12; n = 13)	366 $\pm$ 132 <sup>a</sup> (N = 5; n = 5)
	2018/19	635 $\pm$ 233 (N = 9; n = 10) <sup>a</sup>	164 $\pm$ 12 <sup>b</sup> (N = 6; n = 14)	189 (N = 1; n = 1)
	2019/20	475 $\pm$ 141 (N = 3; n = 3) <sup>a</sup>	129 $\pm$ 50 <sup>bc</sup> (N = 3; n = 4)	-
	2020/21	199 $\pm$ 153 (N = 2; n = 2)	82 $\pm$ 32 <sup>ac</sup> (N = 6; n = 16)	328 $\pm$ 120 <sup>a</sup> (N=5; n = 5)
HH	2017/18	-	10.6 $\pm$ 5.1 <sup>a</sup> (N=12; n = 13)	13.0 $\pm$ 5.4 <sup>a</sup> (N = 5; n = 5)
	2018/19	4.6 $\pm$ 2.6 (N = 8; n = 9) <sup>a</sup>	5.0 $\pm$ 3.0 <sup>b</sup> (N =6; n = 14)	5.6 (N = 1; n = 1)
	2019/20	1.0 $\pm$ 0.8 (N = 3; n = 3) <sup>b</sup>	9.2 $\pm$ 2.7 <sup>a</sup> (N = 2; n = 3)	-
	2020/21	3.2 $\pm$ 0.3 (N=2; n = 2)	4.0 $\pm$ 2.0 <sup>b</sup> (N = 6; n = 16)	5.6 $\pm$ 1.5 <sup>a</sup> (N = 3; n = 3)
HL	2017/18	-	32.6 $\pm$ 7.8 <sup>a</sup> (N=12; n = 13)	52.8 $\pm$ 7.4 <sup>a</sup> (N = 5; n = 5)
	2018/19	50.8 $\pm$ 8.9 (N = 8; n = 9) <sup>a</sup>	50.7 $\pm$ 10.4 <sup>b</sup> (N =6; n = 14)	44.8 (N = 1; n = 1)
	2019/20	37.9 $\pm$ 8.9 (N = 3; n = 3) <sup>a</sup>	54.9 $\pm$ 12.2 <sup>b</sup> (N = 2; n = 3)	-
	2020/21	33.4 $\pm$ 0.3 (N=2; n = 2)	39.8 $\pm$ 13.0 <sup>a</sup> (N = 6; n = 16)	58.4 $\pm$ 14.5 <sup>a</sup> (N = 3; n = 3)
LH	2017/18	-	23.0 $\pm$ 10.8 <sup>a</sup> (N=12; n = 13)	15.4 $\pm$ 6.5 <sup>a</sup> (N = 5; n = 5)
	2018/19	7.04 $\pm$ 3.1 (N = 8; n = 9) <sup>a</sup>	9.4 $\pm$ 3.7 <sup>b</sup> (N =6; n = 14)	11.1 (N = 1; n = 1)
	2019/20	0.7 $\pm$ 0.6 (N = 3; n = 3) <sup>b</sup>	12.5 $\pm$ 7.8 <sup>ab</sup> (N = 2; n = 3)	-
	2020/21	7.6 $\pm$ 0.2 (N=2; n = 2)	13.1 $\pm$ 5.8 <sup>b</sup> (N = 6; n = 16)	7.9 $\pm$ 3.2 <sup>a</sup> (N = 3; n = 3)
LL	2017/18	-	33.8 $\pm$ 11.5 <sup>a</sup> (N=12; n = 13)	18.8 $\pm$ 8.9 <sup>a</sup> (N = 5; n = 5)
	2018/19	37.6 $\pm$ 7.0 (N = 8; n = 9) <sup>a</sup>	34.9 $\pm$ 10.2 <sup>a</sup> (N =6; n = 14)	38.5 (N = 1; n = 1)
	2019/20	60.4 $\pm$ 10.2 (N = 3; n = 3) <sup>b</sup>	23.5 $\pm$ 3.07 <sup>a</sup> (N = 2; n = 3)	-
	2020/21	56.0 $\pm$ 0.3 (N=2; n = 2)	43.2 $\pm$ 9.8 <sup>b</sup> (N = 6; n = 16)	28.1 $\pm$ 10.8 <sup>a</sup> (N = 3; n = 3)

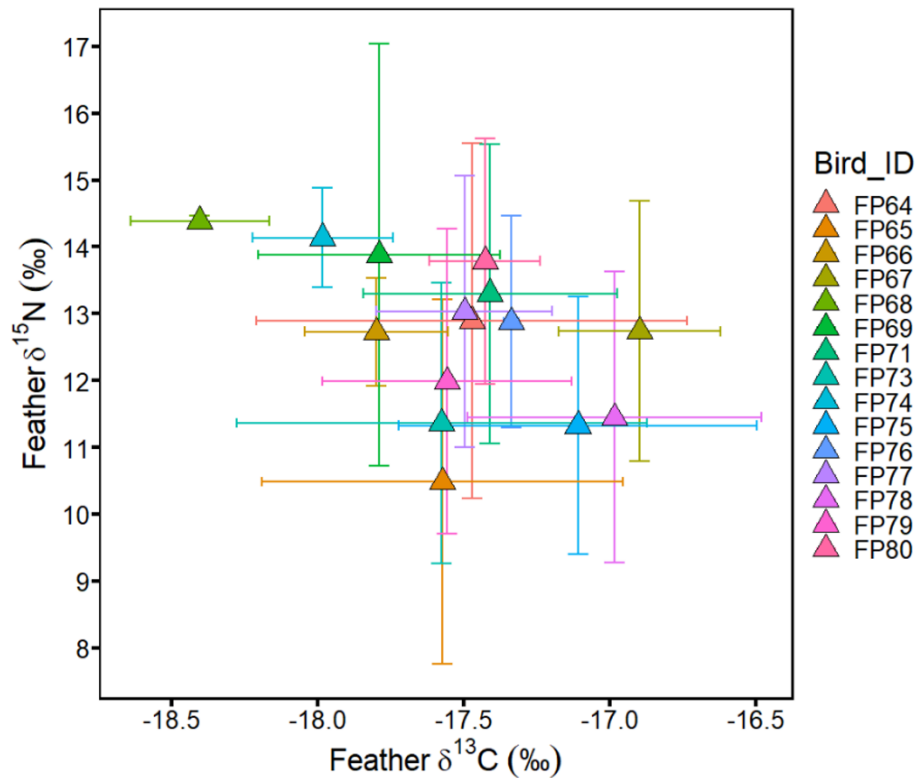




**Figure S1: Distance from the colony (upper panel) and proportion of time spent on the water per day (lower panel) during the post-breeding migration of fairy prion from Kanowna Island. Data were fitted with a generalized additive mixed models (GAMMs).**



**Figure S2: Inter-annual variation of whole blood and body feather  $\delta^{13}\text{C}$  and  $\delta^{15}\text{N}$  values of fairy prion from Kanowna Island during the incubation (dots), chick-rearing (squares) and post-breeding periods (triangles). Yellow = 2017-2018; red = 2018-2019; blue = 2019-2020. In order to allow statistical comparisons between blood and feathers, isotopic values of feathers were corrected using mean corrections factors from Cherel et al. (2014).**



**Figure S3: Intra-individual variation of body feather  $\delta^{13}\text{C}$  and  $\delta^{15}\text{N}$  values (means  $\pm$  SD) of fairy prion from Kanowna Island (2018-2019). For each individual, four body feathers were analyzed.**