



**HAL**  
open science

# Aliasing-Free and Additive Error in Mixed Spectra for Stable Processes. Application: Sound of a Bird just captivated in stress

Rachid Sabre

► **To cite this version:**

Rachid Sabre. Aliasing-Free and Additive Error in Mixed Spectra for Stable Processes. Application: Sound of a Bird just captivated in stress. *International Journal of Signal Processing Systems*, 2022, 10 (4), pp.18-24. 10.18178/ijsp.10.4.18-24 . hal-03774143

**HAL Id: hal-03774143**

**<https://hal.science/hal-03774143>**

Submitted on 4 Mar 2024

**HAL** is a multi-disciplinary open access archive for the deposit and dissemination of scientific research documents, whether they are published or not. The documents may come from teaching and research institutions in France or abroad, or from public or private research centers.

L'archive ouverte pluridisciplinaire **HAL**, est destinée au dépôt et à la diffusion de documents scientifiques de niveau recherche, publiés ou non, émanant des établissements d'enseignement et de recherche français ou étrangers, des laboratoires publics ou privés.



Distributed under a Creative Commons Attribution 4.0 International License

# Aliasing-Free and Additive Error in Mixed Spectra for Stable Processes. Application: Sound of a Bird just Captivated in Stress

Rachid Sabre

Laboratory Biogéosciences CNRS, University of Burgundy/Agrosup Dijon, France  
Email: r.sabre @agrosupdijon.fr

**Abstract**—Consider a symmetric continuous time  $\alpha$  stable process observed with an additive constant error. The objective of this paper is to give a non-parametric estimator of this error by using discrete observations. As the time of process is continuous and the observations are discrete, we encountered the aliasing phenomenon. Our process sample is taken in a way to circumvent the difficulty related to aliasing and we smoothed the periodogram by using Jackson Kernel. The rate of convergence of this estimator is studied when the spectral density is zero at origin. Few long memory processes are taken here as examples. We have applied our estimator to the concrete case of modeling noise of a bird captured under stress.

**Index Terms**—spectral density, Jackson kernel, stable processes.

## I. INTRODUCTION

This work is interested in the class of symmetric alpha stable signals which are known for being infinite energy signals. These processes have been developed in recent decades by several authors, including [1]-[12] to name just a few.

The Gaussian density distribution remains a particular cases of alpha-stable distribution ( $\alpha=2$ ).

Alpha stable distribution can be considered as the best model for signals that are normally impulsive. It is used for modeling many phenomena where the Gaussian is not a reasonable choice (when variance is very large). Signals in this class contain high-pitched bursts or occasional spikes.

Symmetric alpha stable processes are used for modeling many phenomena in several fields: physics, biology, electronic and electrical engineering, hydrology, economics, communications and radar applications and signal image processing... see [13]-[24].

In this work, we consider a symmetric  $\alpha$  stable

harmonizable process  $Z = \{Z_t; t \in R\}$ . Alternatively  $Z$  has the integral representation:

$$Z_t = \int_{-\infty}^{\infty} \exp[i(t\lambda)] d\xi(\lambda)$$

where  $1 < \alpha < 2$  and  $\xi$  is a complex valued symmetric  $\alpha$ -stable random measure on  $R$  with independent and isotropic increments. The paper [4] defined the measure  $m(A) = |\xi(A)|_{\alpha}^{\alpha}$  called "control" measure or spectral measure. Suppose that this measure is absolutely continuous with respect to Lebesgue measure:  $m d(x) = \phi(x) dx$ . The function  $\phi$  is called the spectral density. The estimations of the spectral density are given: in [4] when the time of the process is continuous, in [25] when the time of the process is discrete and in [26] when the time of the process is p-adic.

This paper considers a case frequently encountered in event where we can not directly observe the process  $Z$  but we observe such process with an unknown additional constant error. The observed process is  $X_t = a + Z_t$  instead of the process  $Z$  alone.

The objective of this work is to give an estimator of this constant  $a$ , in the specific case when the spectral measure is mixed: the sum of an absolutely continuous measure and a discrete measure:

$$d\mu(\lambda) = \phi(x) dx + \sum_{i=1}^q c_i \delta_{w_i}$$

where  $\delta$  is a Dirac measure,  $\phi$  is nonnegative integrable and bounded function.  $c_i$  is unknown positive real number and  $w_i$  is unknown real number. Assume that  $w_i \neq 0$ . [27] gives the estimation of the error "a" when the time of the process is discrete. In this paper, we consider that the time of the process is continuous. We can not use the same estimator given for discrete time because we will encounter aliasing phenomenon. Our objective is to propose a nonparametric estimator of the error "a" after discrete sampling of the process  $X(t)$ . This work is motivated by the fact that it is practically impossible to observe the process over a continuous time interval. However, we sampled the process at equidistant times, i.e.  $t_n = n\tau$ ,  $\tau > 0$ . It is

Manuscript received August 23, 2022; accepted November 1, 2022

known that aliasing phenomenon occurs. For more details about aliasing phenomenon, see [28]. We assume that the spectral density  $\phi$  is null for  $|\lambda| > \Omega$  where  $\Omega$  is a nonnegative real number. Moreover this assumption is verified for the alpha stable density. We give an estimate of the additive error and study the convergence rate where the spectral density is zero at origin, particularly at  $\phi(\lambda) = \sin^{2k\alpha}(\frac{\lambda}{2})g(\lambda)$  and  $\phi(\lambda) = |\lambda|^\beta g(\lambda)$ . We prove that the of convergence rate is improved following the value of  $\beta$ .

This paper is organized as follows: The second section gives some definitions and proprieties of symmetric stable processes and an estimator of the constant  $a$  that we show to be converging in probability to  $a$  and to be converging in  $L_p$  ( $p < \alpha$ ) to replace the convergence in mean square because the second moment of the processes is infinite. In third section, we improve the rate of convergence when the spectral density of  $Z$  is assumed zero at origin precisely  $\phi(\lambda) = |\lambda|^\beta g(\lambda)$ . The fourth section, is devoted to numerical studies. The last section, deals with the conclusion and perspective of the work.

## II. THE ESTIMATE OF THE CONSTANT ERROR

Starting with the introduction of some basic notations and properties of alpha stable distribution and process. A random variable  $X$  is symmetric  $\alpha$ -stable (S $\alpha$ S),  $0 < \alpha < 2$ , if its characteristic function is defined by:

$$\phi_X(\theta) = e^{-\sigma^\alpha |\theta|^\alpha}$$

where  $\alpha$  is the characteristic exponent and  $\sigma$  is the dispersion of the distribution. When  $\alpha$  takes the values 1 and 2, we obtain two important special cases of (S $\alpha$ S) distribution, namely Cauchy distribution and Gaussian distribution.

The random variables  $X_1, \dots, X_d$  are jointly (S $\alpha$ S) if there is a single positive measure  $\Gamma_{X^{(d)}}$  on  $S_d$ , unit sphere of  $R^d$ , where its characteristic function is of the form:

$$\phi_X(\theta_1, \dots, \theta_d) = \exp \left\{ - \int_{S_d} |\theta_1 s_1 + \dots + \theta_d s_d|^\alpha d\Gamma_{X^{(d)}}(s_1, \dots, s_d) \right\}.$$

When  $X_1$  and  $X_2$  are jointly (S $\alpha$ S), the covariation of  $(X_1, X_2)$  is defined in [1] by

$$[X_1, X_2]_\alpha = \int_{S_2} s_1 \cdot (s_2)^{<\alpha-1>} d\Gamma_{X_1, X_2}(s_1, s_2)$$

where  $s^{<\beta>} = \text{sign}(s) \cdot |s|^\beta$ . Since the moment of second order is infinity, The covariation plays the same role as the covariance.

From the definition of the covariation, [8] defined the following norm on the linear space of (S $\alpha$ S) random variables:

$$|X|_\alpha = [X, X]_\alpha^{1/\alpha}$$

The process  $\xi = (\xi_t, t \in R)$  is symmetric  $\alpha$ -stable if all linear combinations  $\sum_{i=1}^n \lambda_i \xi_{t_i}$  are (S $\alpha$ S) variables.

This paper considers a (S $\alpha$ S) process where its spectral

representation is

$$Z_t = \int_{-\infty}^{\infty} e^{it\lambda} d\xi(\lambda),$$

where  $\xi$  is a isotropic symmetric  $\alpha$ -stable with independent increments. The measure defined by:  $\mu(\cdot, t) = |\xi(t) - \xi(s)|_\alpha^\alpha$  is Lebesgue-Stiel measure called the spectral measure (see [1] and [4]). When  $\mu$  is absolutely continuous  $d\mu(x) = f(x)dx$ , the function  $f$  is called the spectral density of the process  $Z$ .

As in [29], [12] and [25], we give the definition of the Jackson polynomial kernel: Let  $Z_1, \dots, Z_N$   $N$  observations of the process, where  $N$  satisfies:

$$N - 1 = 2k(n - 1) \text{ with } n \in N, \quad k \in N \cup \left\{ \frac{1}{2} \right\}$$

if  $k = \frac{1}{2}$  then  $n = 2n_1 - 1, n_1 \in N$ .

The Jackson's polynomial kernel is defined by:  $|H_N(\lambda)|^\alpha = |A_N H^{(N)}(\lambda)|^\alpha$  where

$$H^{(N)}(\lambda) = \frac{1}{q_{k,n}} \left( \frac{\sin(\frac{n\lambda}{2})}{\sin(\frac{\lambda}{2})} \right)^{2k} \quad \text{with}$$

$$q_{k,n} = \frac{1}{2\pi} \int_{-\pi}^{\pi} \left( \frac{\sin(\frac{n\lambda}{2})}{\sin(\frac{\lambda}{2})} \right)^{2k} d\lambda.$$

In addition, we have  $A_N = (B_{\alpha,N})^{-1\alpha}$  with  $B_{\alpha,N} = \int_{-\pi}^{\pi} |H^{(N)}(\lambda)|^\alpha d\lambda$ .

We give the following lemmas proved in [25] [29], which are used in the reminder of this paper.

Lemma 1.

There is a nonnegative function  $h_k$  such as:

$$H^{(N)}(\lambda) = \sum_{m=-k(n-1)}^{k(n-1)} h_k \left( \frac{m}{n} \right) \cos(m\lambda)$$

Lemma 2.

Let  $B'_{\alpha,N} = \int_{-\pi}^{\pi} \left| \left( \frac{\sin(\frac{n\lambda}{2})}{\sin(\frac{\lambda}{2})} \right) \right|^{2k\alpha} d\lambda$  and  $J_{N,\alpha} =$

$\int_{-\pi}^{\pi} |u|^\gamma |H_N(\lambda)|^\alpha d\lambda$ , where  $\gamma \in ]0, 2]$ .

Then

$$B'_{\alpha,N} \geq (2/\pi)^{2k\alpha} n^{2k\alpha-1} \text{ if } 0 < \alpha < 2$$

$$B'_{\alpha,N} \leq \frac{4\pi k\alpha}{2k\alpha - 1} n^{2k\alpha-1} \text{ if } \frac{1}{2k} < \alpha < 2$$

and

$$J_{N,\alpha} \leq \frac{\pi^{\gamma+2k\alpha}}{2^{2k\alpha}(\gamma - 2k\alpha + 1)} \frac{1}{n^{2k\alpha-1}} \text{ if } \frac{1}{2k} < \alpha < \frac{\gamma+1}{2k}$$

$$J_{N,\alpha} \leq \frac{2k\alpha\pi^{\gamma+2k\alpha}}{2^{2k\alpha}(\gamma+1)(2k\alpha - \gamma - 1)} \frac{1}{n^\gamma} \text{ if } \frac{\gamma+1}{2k} < \alpha < 2$$

In this paper, we propose an estimate of the constant error  $a$  defined by:

$$\hat{a} = \frac{\tau A_N}{H_N(0)} \sum_{n'=-k(n-1)}^{k(n-1)} h_k \left( \frac{n'}{n} \right) X(\tau n' + \tau k(n-1)). \quad (1)$$

Theorem 3.

Let  $p$  a real number such that  $0 < p < \alpha$ . Then

$$|\hat{a} - a|^p = O\left(n^{-\frac{p}{\alpha}}\right)$$

Proof

From the spectral representation of the process, the estimator proposed becomes

$$\hat{a} = \frac{\tau A_N}{H_N(0)} \sum_{n'=-k(n-1)}^{k(n-1)} W(n') + a, \text{ where}$$

$$W(n') = \left[ h_k \left( \frac{n'}{n} \right) \int_{-\infty}^{\infty} \exp[i(\tau n' + \tau k(n-1))\lambda] d\xi(\lambda) \right]$$

Using [1], the characteristic function of  $(\hat{a} - a)$  can be written as:

$$\begin{aligned} & E \exp[i\Re e \bar{r}(\hat{a} - a)] \\ &= \exp \left[ -C_\alpha |r|^\alpha \left| \int_{-\infty}^{\infty} \frac{\tau^{\frac{1}{\alpha}} A_N}{H_N(0)} W(n') \right|^\alpha d\xi(\lambda) \right]. \end{aligned}$$

where  $r = r_1 + ir_2$ . It is easy to show that:

$$E \exp[i\Re e \bar{r}(\hat{a} - a)] = \exp(-C_\alpha |r|^\alpha \psi_N),$$

where  $\psi_N = \psi_{N,1} + \psi_{N,2}$  with

$$\psi_{N,1} = \tau \int_{-\infty}^{\infty} \frac{|H_N(\tau\lambda)|^\alpha}{|H_N(0)|^\alpha} \phi(\lambda) d\lambda \text{ and}$$

$$\psi_{N,2} = \tau \sum_{i=1}^q c_i \frac{|H_N(\tau w_i)|^\alpha}{|H_N(0)|^\alpha}$$

Putting  $\tau\lambda = x$ , we have

$$\psi_{N,1} = \int_{-\infty}^{\infty} \frac{|H_N(x)|^\alpha}{|H_N(0)|^\alpha} \phi\left(\frac{x}{\tau}\right) dx. \text{ On the other hand,}$$

$$\psi_{N,1} = \sum_{j \in \mathbb{Z}} \int_{(2j-1)\pi}^{(2j+1)\pi} \frac{|H_N(x)|^\alpha}{|H_N(0)|^\alpha} \phi\left(\frac{x}{\tau}\right) dx$$

$H_N$  is  $2\pi$ -periodic, we get

$$\psi_{N,1} = \sum_{j \in \mathbb{Z}} \int_{-\pi}^{\pi} \frac{|H_N(x)|^\alpha}{|H_N(0)|^\alpha} \phi_j\left(\frac{x}{\tau}\right) dx$$

where  $\phi_j(x) = \phi\left(\frac{x-2\pi j}{\tau}\right)$ . Let  $j$  be an integer such that  $-\Omega < \frac{x-2\pi j}{\tau} < \Omega$ . Since  $\tau\Omega < \pi$  and  $|x| < \pi$ , we get  $|j| < \frac{\tau\Omega}{2\pi} + \frac{1}{2} < 1$  and then  $j = 0$ . Therefore

$$\psi_{N,1} = \int_{-\pi}^{\pi} \frac{|H_N(x)|^\alpha}{|H_N(0)|^\alpha} \phi\left(\frac{x}{\tau}\right) dx. \quad (2)$$

The function  $\phi$  being bounded on  $[-\pi, \pi]$  and  $|H_N(\cdot)|^\alpha$  being a kernel, it can be shown that  $\int_{-\pi}^{\pi} |H_N(\lambda)|^\alpha \phi(\lambda) d\lambda$  is converging to  $\phi(0)$ . On the other hand, from lemma 2, we have:

$$\frac{1}{|H_N(0)|^\alpha} = B'_{\alpha, N} n^{2k\alpha} = O\left(\frac{1}{n}\right)$$

Therefore  $\psi_{N,1}$  converges to 0.

$$\psi_{n,2} \leq \sum_{i=1}^q \frac{c_i}{B'_{\alpha, N}} \frac{1}{\left| \sin \left[ \frac{1}{2} \tau w_i \right] \right|^{2k\alpha}} \frac{B'_{\alpha, N}}{n^{2k\alpha}}.$$

Therefore

$$\psi_{N,2} = O\left(\frac{1}{n^{2k\alpha}}\right).$$

As  $2k\lambda > 1$ , we obtain

$$\psi_N = O\left(\frac{1}{n}\right). \quad (3)$$

Consequently, the characteristic function of  $\hat{a} - a$  converges to 1 when  $N$  tends to infinity. Hence  $\hat{a}$  converges in probability of to  $a$ .

We study now the convergence of  $\hat{a}$  to  $a$  in  $L_p$  where  $0 < p < \alpha$ , which replaces the convergence in mean square, because the second order moment of  $X$  is infinity.

Let

$$D_p = \Re e \int_{-\infty}^{\infty} \int_{-\pi/4}^{\pi/4} \frac{1 - e^{ircos\theta}}{|r|^{1+p}} dr d\theta.$$

$$D_p E |\hat{a} - a|^p = \left(\frac{\pi}{2}\right) \int_{-\infty}^{\infty} \frac{1 - e^{-C_\alpha |t|^\alpha \psi_N}}{|t|^{1+p}} dt.$$

Let  $u = t[\psi_N]^{1/\alpha}$  and using (3), we obtain

$$\frac{2}{\pi} C_{p,\alpha} E |\hat{a} - a|^p = (\psi_N)^{\frac{p}{\alpha}} = O\left(\frac{1}{n^{\frac{p}{\alpha}}}\right). \quad (4)$$

where

$$C_{p,\alpha} = R_p F_{p,\alpha}^{-1}(C_\alpha)^{-\frac{p}{\alpha}}$$

with

$$R_p = \int \frac{(1 - \cos(u))}{|u|^{1+p}} du$$

$$\text{and } F_{p,\alpha} = \int \frac{1 - e^{-|u|^\alpha}}{|u|^{1+p}} du.$$

### III. THE IMPROVEMENT OF THE RATE OF CONVERGENCE

In order to improve the convergence rate of the estimator  $\hat{a}$ , we consider the cases where the spectral density is zero at the origin.

Theorem 4. Assume that the spectral density is satisfying:

$$\phi(\lambda) = |\lambda|^\beta g(\lambda)$$

where  $\beta \in ]0, 2k\alpha - 1[$ ,  $\lambda \in [-\pi, \pi]$ ,  $\tau w_i \notin 2\pi\mathbb{Z}$  and  $g(\lambda)$  is a bounded function on  $[-\pi, \pi]$ , continuous in neighborhood of 0 and  $g(0) \neq 0$ . Then

$$\frac{2^{4kp}}{\tau^\beta} L \leq \lim_{N \rightarrow \infty} n^{\frac{p(\beta+1)}{\alpha}} E |\hat{a} - a|^p \leq \frac{2^{4kp}}{\tau^\beta} L,$$

where  $L$  is the following constant:

$$L = \frac{\pi}{2C_{p,\alpha}} \left[ g(0) \int_{-\infty}^{\infty} \frac{|\sin \frac{u}{2}|^{2k\alpha}}{|u|^{2k\alpha-\beta}} du \right]^{p\alpha}.$$

Proof:

From the definition of  $H_N$  and (2), the function  $\psi_N$  can be written as:

$$\psi_N = n^{-2k\alpha} \int_{-\pi}^{\pi} \left| \frac{\sin \frac{n\lambda}{2}}{\sin \frac{\lambda}{2}} \right|^{2k\alpha} \left| \frac{\lambda}{\tau} \right|^\beta g\left(\frac{\lambda}{\tau}\right) d\lambda + n^{-2k\alpha} \sum_{i=1}^q c_i \left| \frac{\sin \left[ \frac{n\tau w_i}{2} \right]}{\sin \left[ \frac{\tau w_i}{2} \right]} \right|^{2k\alpha}$$

Using the following inequality:

$$\left| \sin \frac{x}{2} \right| \geq \frac{x}{\pi} \quad 0 \leq x \leq \pi, \quad (5)$$

we maximize  $\psi_N$  as follows:

$$\psi_N \leq \frac{\pi^{4k\alpha} n^{-2k\alpha}}{\tau^\beta} \int_{-\pi}^{\pi} \frac{\left| \sin \frac{n\lambda}{2} \right|^{2k\alpha}}{\left| \lambda \right|^{2k\alpha-\beta}} g\left(\frac{\lambda}{\tau}\right) d\lambda + n^{-2k\alpha} \sum_{i=1}^q c_i \left| \frac{1}{\sin \left[ \frac{\tau w_i}{2} \right]} \right|^{2k\alpha}.$$

Putting  $n\lambda = u$ , we have

$$\psi_N \leq \frac{\pi^{4k\alpha} n^{-1-\beta}}{\tau^\beta} \left[ \int_{-\infty}^{\infty} \frac{\left| \sin \frac{u}{2} \right|^{2k\alpha}}{\left| u \right|^{2k\alpha-\beta}} g\left(\frac{u}{\tau n}\right) du + \frac{n^{-2k\alpha+1+\beta}}{\pi^{4k\alpha}} \sum_{i=1}^q c_i \left| \frac{1}{\sin \left[ \frac{\tau w_i}{2} \right]} \right|^{2k\alpha} \right].$$

On the other hand, using Lebesgue's dominated convergence theorem, we show that:

$$\lim_{N \rightarrow \infty} \int_{-\infty}^{\infty} \frac{\left| \sin \frac{u}{2} \right|^{2k\alpha}}{\left| u \right|^{2k\alpha-\beta}} g\left(\frac{u}{\tau n}\right) du + \frac{n^{-2k\alpha+1+\beta}}{\pi^{4k\alpha}} \sum_{i=1}^q c_i \left| \frac{1}{\sin \left[ \frac{\tau w_i}{2} \right]} \right|^{2k\alpha} = g(0) \int_{-\infty}^{\infty} \frac{\left| \sin \frac{u}{2} \right|^{2k\alpha}}{\left| u \right|^{2k\alpha-\beta}} du. \quad (6)$$

Lemma 2 gives:

$$\lim_{N \rightarrow \infty} n^{\frac{p(\beta+1)}{\alpha}} (\psi_N)^{\frac{p}{\alpha}} \leq \frac{\pi^{4kp}}{\tau^\beta} \left( g(0) \int_{-\infty}^{\infty} \frac{\left| \sin \frac{u}{2} \right|^{2k\alpha}}{\left| u \right|^{2k\alpha-\beta}} du \right)^{\frac{p}{\alpha}}.$$

Thus  $\psi_N$  converges to zero. Using the following inequality

$$|\sin x| \leq |x| \quad \forall x \in [-\pi, \pi], \quad (7)$$

we obtain:

$$\psi_N \geq \frac{2^{4k\alpha} n^{-2k\alpha}}{\tau^\beta} \int_{-\pi}^{\pi} \frac{\left| \sin \frac{u}{2} \right|^{2k\alpha}}{\left| u \right|^{2k\alpha-\beta}} g\left(\frac{u}{\tau}\right) du + n^{-2k\alpha} \sum_{i=1}^q c_i \left| \frac{\sin \left[ \frac{n\tau w_i}{2} \right]}{\sin \left[ \frac{\tau w_i}{2} \right]} \right|^{2k\alpha}.$$

$$\psi_N \geq \frac{2^{4k\alpha} n^{-\beta-1}}{\tau^\beta} \left[ \int_{-\pi}^{\pi} \frac{\left| \sin \frac{u}{2} \right|^{2k\alpha}}{\left| u \right|^{2k\alpha-\beta}} g\left(\frac{u}{\tau n}\right) du + R_n \right],$$

where  $R_n = \frac{n^{-2k\alpha+\beta+1}}{2^{4k\alpha}} \sum_{i=1}^q c_i \left| \frac{\sin \left[ \frac{n\tau w_i}{2} \right]}{\sin \left[ \frac{\tau w_i}{2} \right]} \right|^{2k\alpha}$ . Since  $R_n$  converges to zero, the equality (5) gives:

$$\lim_{N \rightarrow \infty} n^{\frac{p(\beta+1)}{\alpha}} (\psi_N)^{\frac{p}{\alpha}} \geq$$

$$\frac{2^{4kp}}{\tau^\beta} \left( g(0) \int_{-\infty}^{+\infty} \frac{\left| \sin \frac{u}{2} \right|^{2k\alpha}}{\left| u \right|^{2k\alpha-\beta}} du \right)^{p\alpha}.$$

The first equality of (4) reaches the result of this theorem.

Theorem 5. Assuming that the spectral density satisfies:

$$\phi(\lambda) = \sin^{2k\alpha} \left( \frac{\lambda}{2} \right) g(\lambda)$$

where the function  $g$  is integrable on  $[-\pi, \pi]$  and  $g(0) \neq 0$ . Then

$$cte \frac{\pi}{2C_{p,\alpha}} \left( \int_{-\pi}^{\pi} g\left(\frac{\lambda}{\tau}\right) d\lambda \right)^{\frac{p}{\alpha}} \leq \lim_{N \rightarrow \infty} n^{2pk} E|\hat{a} - a|^p \leq \frac{\pi}{2C_{p,\alpha}} \left( \int_{-\pi}^{\pi} g(\lambda) d\lambda + \sum_{i=1}^q c_i \left| \frac{1}{\sin \left[ \frac{\tau w_i}{2} \right]} \right|^{2k\alpha} \right)^{\frac{p}{\alpha}}.$$

Proof: From the definition of  $\psi_N$  and (2), we have

$$\psi_N = n^{-2k\alpha} \int_{-\pi}^{\pi} \left| \sin \frac{n\lambda}{2} \right|^{2k\alpha} \left| \frac{\sin \frac{\lambda}{2}}{\sin \frac{\lambda}{\tau}} \right|^{2k\alpha} g\left(\frac{\lambda}{\tau n}\right) d\lambda + n^{-2k\alpha} \sum_{i=1}^q c_i \left| \frac{\sin \left[ \frac{n\tau w_i}{2} \right]}{\sin \left[ \frac{\tau w_i}{2} \right]} \right|^{2k\alpha}.$$

As  $1 \leq k\alpha$  and the sinus function is increasing in  $[\pi/2, \pi/2]$ , the next expression is bounded by

$$\psi_N \leq n^{-2k\alpha} \int_{-\pi}^{\pi} \left| \sin \frac{\lambda n}{2} \right|^2 g\left(\frac{\lambda}{n\tau}\right) d\lambda + n^{-2k\alpha} \sum_{i=1}^q c_i \left| \frac{\sin \left[ \frac{n\tau w_i}{2} \right]}{\sin \left[ \frac{\tau w_i}{2} \right]} \right|^{2k\alpha}$$

$$\psi_N \leq n^{-2k\alpha} \left[ \int_{-\pi}^{\pi} g(\lambda) d\lambda + \sum_{i=1}^q c_i \left| \frac{\sin \left[ \frac{n\tau w_i}{2} \right]}{\sin \left[ \frac{\tau w_i}{2} \right]} \right|^{2k\alpha} \right].$$

So, from lemma 2, we have:

$$\lim_{N \rightarrow \infty} \psi_N n^{2k\alpha} \leq \int_{-\pi}^{\pi} g(\lambda) d\lambda + \sum_{i=1}^q c_i \left| \frac{1}{\sin \left[ \frac{w_i}{2} \right]} \right|^{2k\alpha}.$$

Using the fact that the sinus function is between  $-1$  and  $1$  and that  $k\alpha < [k\alpha] + 1$  where  $[k\alpha]$  represents the integer part of  $k\alpha$ , we obtain

$$\psi_N \geq n^{-2k\alpha} \int_{-\pi}^{\pi} \left[ \left( \sin \frac{n\lambda}{2} \right)^2 \right]^{[k\alpha]+1} g\left(\frac{\lambda}{\tau}\right) d\lambda + n^{-2k\alpha} \sum_{i=1}^q c_i \left| \frac{\sin \left[ \frac{n\tau w_i}{2} \right]}{\sin \left[ \frac{\tau w_i}{2} \right]} \right|^{2k\alpha}$$

$$\psi_N \geq n^{-2k\alpha} \frac{n^{-1}}{2B'_{\alpha,N}} \int_{-\pi}^{\pi} \left[ \frac{1 - \cos n\lambda}{2} \right]^{[k\alpha]+1} g\left(\frac{\lambda}{\tau}\right) d\lambda + n^{-2k\alpha} \sum_{i=1}^q c_i \left| \frac{\sin \left[ \frac{n\tau w_i}{2} \right]}{\sin \left[ \frac{\tau w_i}{2} \right]} \right|^{2k\alpha}.$$

The binomial formula gives:

$$2^{[k\alpha]+1} \psi_N \geq n^{-2k\alpha} \int_{-\infty}^{\infty} g(\lambda) d\lambda + n^{-2k\alpha} \sum_{r=1}^{[k\alpha]+1} (-1)^r C_{[k\alpha]+1}^r \int_{-\pi}^{\pi} \cos^r(n\lambda) g\left(\frac{\lambda}{\tau}\right) d\lambda + n^{-2k\alpha} \sum_{i=1}^q c_i \left| \frac{\sin \left[ \frac{n\tau w_i}{2} \right]}{\sin \left[ \frac{\tau w_i}{2} \right]} \right|^{2k\alpha}$$

We know that  $\int_{-\pi}^{\pi} \cos^r(n\lambda) g\left(\frac{\lambda}{\tau}\right) d\lambda$  is converging to a constant. Indeed, using the binomial formula, we obtain:

$$\cos^r(n\lambda) = \left( \frac{e^{in\lambda} + e^{-in\lambda}}{2} \right)^r = \frac{1}{2^r} \sum_{j=0}^r C_r^j e^{ijn\lambda} e^{-i(r-j)n\lambda}$$

Hence

$$\int_{-\pi}^{\pi} \cos^r(n\lambda) g\left(\frac{\lambda}{\tau}\right) d\lambda = \frac{1}{2^r} \sum_{j=0}^r C_r^j \int_{-\pi}^{\pi} \cos((2j-r)n\lambda) g\left(\frac{\lambda}{\tau}\right) d\lambda.$$

The right side of the last equality converges to  $\frac{1}{2^r} \int_{-\pi}^{\pi} g\left(\frac{\lambda}{\tau}\right) d\lambda$  when  $r$  is even, and converges to 0 when  $r$  is odd. Consequently,

$$\lim_{N \rightarrow \infty} \sum_{r=1}^{\frac{[k\alpha]+1}{2}} (-1)^r C_{[k\alpha]+1}^r \int_{-\pi}^{\pi} \cos^r(n\lambda) g\left(\frac{\lambda}{\tau}\right) d\lambda =$$

$$\sum_{p=1}^{\frac{[k\alpha]+1}{2}} (-1)^{2p} C_{[k\alpha]+1}^{2p} \frac{1}{2^{2p}} \int_{-\pi}^{\pi} g(\lambda\tau) d\lambda \text{ if } [k\alpha] + 1 \text{ is even}$$

and

$$\lim_{N \rightarrow \infty} \sum_{r=1}^{[k\alpha]+1} (-1)^r C_{[k\alpha]+1}^r \int_{-\pi}^{\pi} \cos^r(n\lambda) g\left(\frac{\lambda}{\tau}\right) d\lambda = \sum_{p=1}^{[k\alpha]2} (-1)^{2p} C_{[k\alpha]+1}^{2p} \frac{1}{2^{2p}} \int_{-\pi}^{\pi} g\left(\frac{\lambda}{\tau}\right) d\lambda \text{ else.}$$

Since  $\lim_{N \rightarrow \infty} n^{-2k\alpha} \sum_{i=1}^q c_i \left| \frac{\sin \left[ \frac{n\tau w_i}{2} \right]}{\sin \left[ \frac{\tau w_i}{2} \right]} \right|^{2k\alpha} = 0$ . The similar arguments are used for showing that

$$\lim_{N \rightarrow \infty} (\psi_N)^{\frac{p}{\alpha}} n^{2kp} \geq cte \left( \int_{-\pi}^{\pi} g\left(\frac{\lambda}{\tau}\right) d\lambda \right)^{\frac{p}{\alpha}}. \quad (8)$$

Theorem 6.

Assume that spectral density satisfies:

$$\phi(\lambda) = |\lambda|^{\beta} g(\lambda)$$

where  $\beta > 2k\alpha - 1$  and  $g$  is measurable positive function bounded on  $[-\pi, \pi]$ . Then

$$cte \times R \leq \lim_{N \rightarrow \infty} n^{2kp} E|\hat{a} - a|^p \leq R$$

$$\text{where } R = \frac{\pi}{2C_{p,\alpha}} \left( \int_{-\pi}^{\pi} \frac{|\lambda|^{\beta}}{\left| \sin \frac{\lambda}{2} \right|^{2k\alpha}} g(\lambda) d\lambda \right)^{\frac{p}{\alpha}}.$$

Proof:

Define the function  $l$  as follows:

$$l(\lambda) = \pi^{2k\alpha} \quad \text{if } |\lambda| > \pi$$

$$l(\lambda) = |\lambda|^{2k\alpha} |\sin \lambda|^{2k\alpha} \quad \text{if } 0 < |\lambda| \leq \pi$$

$$l(\lambda) = 2^{2k\alpha} \quad \text{if } \lambda = 0.$$

The function  $\psi_N$  can be written as:

$$\psi_N = n^{-2k\alpha} \int_{-\pi}^{\pi} \left| \frac{\sin \frac{n\lambda}{2}}{\sin \frac{\lambda}{2}} \right|^{2k\alpha} \sin^{2k\alpha} \left( \frac{\lambda}{2\tau} \right) h\left(\frac{\lambda}{\tau}\right) d\lambda + n^{-2k\alpha} \sum_{i=1}^q c_i \left| \frac{\sin \left[ \frac{n\tau w_i}{2} \right]}{\sin \left[ \frac{\tau w_i}{2} \right]} \right|^{2k\alpha},$$

where  $h(\lambda) = l(\lambda) |\lambda|^{\beta-2k\alpha} g(\lambda)$ . We know that the function  $h$  is integrable on  $[-\pi, \pi]$ . Indeed, since the function  $g$  is bounded, we get:

$$\int_{-\pi}^{\pi} h(\lambda) d\lambda \leq \sup(g) \int_{-\pi}^{\pi} l(\lambda) |\lambda|^{\beta-2k\alpha} d\lambda.$$

Using the inequality (7), we obtain

$$l(\lambda) \leq \pi^{2k\alpha}. \text{ Thus}$$

$$\int_{-\pi}^{\pi} h(\lambda) d\lambda \leq 2\pi^{2k\alpha} \sup(g) \int_0^{\pi} (\lambda)^{\beta-2k\alpha} d\lambda.$$

Since  $\beta > 2k\alpha - 1$ , the function  $h$  is integrable. From (4) and the theorem 4, the result is obtained.

#### IV. NUMERICAL STUDIES

In this work, we apply our estimator to the concrete case of studying the sound of a bird that has just been captivated and under stress. This sound was observed with an additive noise supposed to be constant coming from the flapping of wings. We started by studying the variance of this signal, we observe that this variance tends to grow indefinitely following the increasing size of the sample. We also note that the curve of the characteristic function of the signal grows exponentially as a function of time, which led us to modeling by a stable continuous-time alpha process.

Estimation of the alpha parameter is done by using [30], the estimator gives  $\alpha=1.68$ .

Using [31], we estimate the spectral density  $\phi$ .

We modeled our signal by a series representation using the work [32],

$$Z_t = C_\alpha (\int \phi(x) dx)^{1-\alpha} \sum_{k=1}^{\infty} \varepsilon_k \Gamma_k^{-1\alpha} e^{itV_k} e^{i\theta_k} \text{ where}$$

- $\varepsilon_k$  is a sequence of i.i.d. random variables such as:  $P[\varepsilon_k = 0] = P[\varepsilon_k = 1] = 1/2$ ,
- $\Gamma_k$  is a sequence of arrival times of Poisson process,
- $V_k$  is a sequence of i.i.d. random variables independent of  $\varepsilon_k$  and of  $\Gamma_k$  having the same distribution of control measure  $m$ , which has probability density  $\phi$ .

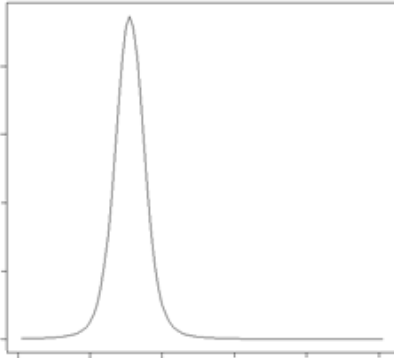


Figure 1. Estimation of the density  $\phi$ .

- $\theta_k$  is a sequence of i.i.d. random variables that have the uniform distribution on  $[-\pi, \pi]$ , independent of  $\varepsilon_k$ ,  $\Gamma_k$  and  $V_k$ .

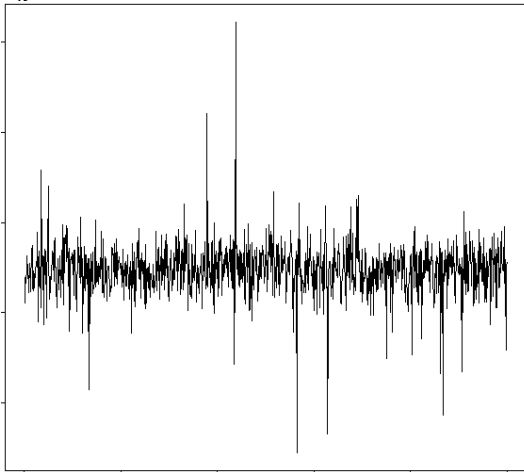


Figure 2. The observed signal.

The observations of the signal is taken at instants:  $t_n = \frac{3}{2}n$ , then  $\tau = \frac{3}{2}$ ,  $0 \leq n \leq N$

Taking  $k = 4$ , we calculate the estimator  $\hat{a}$  given in (1) for different sizes of sample  $N = 101, 501, 1001, 1501, 2001, 2501, 3001$ . The result is given in the following table:

N	101	501	1001	1501	2001	2501	3001
$\hat{a}$	14.4	12.5	9.2	10.5	9.7	10.2	10.1

From Table I, the estimator  $\hat{a}$  tends to the constant error  $a = 10$  when the sample size is large.

## V. CONCLUSION

This work gives a way of solving the problem of the aliasing phenomenon encountered when estimating an error by using discrete observations of continuous-time stable alpha signal. This work could be applied to other processes whose variance is infinite and its observation is disturbed by constant noise. We her give the following examples:

- Segmentation of a sequence of dynamic images, detecting a part of birds in flight;
- detection of possible structural changes in the dynamics of an economic structural phenomenon according to a constant sampling parameter;
- study of the occurrence rate of notes in melodic music in order to simulate the sensation of hearing from afar accompanied by an additional acoustic vibration;
- models of transmission rate in indoor environment for next generation of wireless communication systems.

The perspectives of this work: give a method to find the optimal smoothing parameters such as the cross-validation method.

## CONFLICT OF INTEREST

The authors declare no conflict of interest.

## ACKNOWLEDGMENT

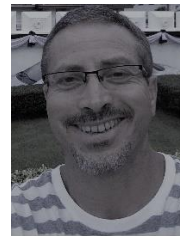
I would like to thank the referees for their interest in this paper and their valuable comments and suggestions. I also thank Taouakoul Brahim for proof reading.

## REFERENCES

- [1] S. Cambanis, "Complex Symmetric stable variables and processes," *Contributions to Statistics: Essays in Honour of Norman L. Johnson North-Holland*. New York, pp. 63-79, 1983.
- [2] M. Fontaine, K. Sekiguchii, A. Nugraha, and A. Aditya, "Alpha-Stable Autoregressive Fast Multichannel Nonnegative Matrix factorization for joint speech enhancement and dereverberation," *Interspeech*, pp. 661-665, 2021.
- [3] J. Paul *et al.*, "Alpha-Stable convergence of heavy-tailed infinitely-wide neural networks," *arXiv preprint arXiv:2106.11064*, 2021.
- [4] E. Masry and S. Cambanis, "Spectral density estimation for stationary stable processes," *Stochastic Processes and Their Applications*, vol. 18, pp. 1-31, North-Holland, 1984.
- [5] G. Samorodnitsky and M. Taqqu, "Stable non gaussian processes," Chapman and Hall, New York, 1994.
- [6] K., Panki and S. Remning, "Stable process with singular drift," *Stochastic Process. Appl.*, 124, no. 7, pp. 2479-2516, 2014.
- [7] S. Legalive, U. Şimsekli, and A. Liutkus, "Speech enhancement with variational autoencoders and alpha-stable distributions," in *Proc. ICASSP 2019-2019 IEEE International Conference on Acoustics, Speech and Signal Processing (ICASSP)*, 2019, pp. 541-545.
- [8] M. Schilder, "Some Structure Theorems for the Symmetric Stable Laws," *Ann. Math. Statist.*, vol. 41, no. 2, pp. 412-421, 1970.
- [9] C. Zhen-Qing and W. Longmin, "Uniqueness of stable processes with drift," in *Proc. Amer. Math. Soc.*, 2016, vol. 144, pp. 2661-2675.
- [10] R. Sabre, "Mixed spectra for stable signals from discrete observations," *Signal & Image Processing: An International Journal (SIPIJ)*, vol. 12, no. 5, pp. 21-44, 2021.
- [11] M. Liu, Y. Han, Y. Chen, H. Song, Z. Yang, and F. Gong, "Modulation Parameter estimation of LFM interference for direct

- sequence spread spectrum communication system in Alpha-Stable noise,” *IEEE Systems Journal*, vol. 15, no. 1, pp. 881-892, 2021.
- [12] R. Sabre, “Estimation de la densité de la mesure spectrale mixte pour un processus symétrique stable strictement stationnaire,” *C. R. Acad. Sci. Paris*, 319, série I, pp. 1307-1310, 1994.
- [13] C. Gogineni, S. P. Talebi, S. Werner, and D. P. Mandic, “Fractional-order correntropy adaptive filters for distributed processing of  $\alpha$ -stable signals,” *IEEE Signal Processing Letters*, vol. 27, pp. 1884-1888, 2020.
- [14] X. Yan, G. Liu, H. -C. Wu, G. Zhang, Q. Wang, and Y. Wu, “Robust modulation classification over  $\alpha$ -stable noise using graph-based fractional lower-order cyclic spectrum analysis,” *IEEE Transactions on Vehicular Technology*, vol. 69, no. 3, pp. 2836-2849, 2020.
- [15] C. L. Nikias and M. Shao, *Signal Processing with Alpha-Stable Distributions and Applications*, Wiley, New York, 1995.
- [16] N. Azzaoui, L. Clavier, and R. Sabre, “Path delay model based on stable distribution for the 60GHz indoor channel,” *IEEE GLOBECOM*, pp. 441-467, 2002.
- [17] J. P. Monillet and Y. Kegen, “Modeling geodetic processes with levy alpha-Stable Distribution and FARIMA,” *Mathematical Geosciences*, 47, no. 6, pp. 627-646, 2015.
- [18] I. Wahyuni and R. Sabre, “Multifocous image fusion using Laplacian pyramid technique based on Alpha Stable Filter,” *CRPASE*, vol. 5, no. 2, pp. 58-62, 2019.
- [19] M. Pereyra and H. Batalia, “Modeling ultrasound echoes in skin tissues using symmetric Alpha-Stable processes,” *IEEE Transactions on Ultrasonics, Ferroelectrics, and Fr 60 equency Control*, vol. 59, no. 1, pp. 60-72, 2012.
- [20] Wu. Ligang and W. Zidong, “Filtering and control for classes of two-dimensional systems,” *The Series Studies in Systems of, Decision and Control*, vol. 18, pp. 1-29, 2015.
- [21] R. Sabre, “Wavlet decomposition and Alpha stable fusion,” *Signal & Image Processing: An International Journal (SIPIJ)*, vol. 11, no. 1, pp. 11-24, 2020.
- [22] X. Zhong and A. B. Premkumar, “Particle filtering for acoustic source tracking in impulsive noise with alpha-stable process,” *IEEE Sensors Journal*, 13, no. 2, pp. 589-600, 2012.
- [23] K. Panki, K. Takumagai, and W. Jiang, “Laws of the iterated logarithm for symmetric jump processes,” *Bernoulli*, vol. 23, no. 4A, pp. 2330-2379, 2017.
- [24] G. Mang, G. Yu, and T. Wang, “Im pulsive gear fault diagnosis using adaptive Morlet wavelet filter based on alpha-stable distribution and kurtogram,” *IEEE Access*, vol. 7, pp. 72283-72296, 2019.
- [25] R. Sabre, “Spectral density estimate for stationary symmetric stable random field,” *Applications Mathematicae*, vol. 23, no. 2, pp. 107-133, 1995.
- [26] R. Sabre, “Spectral density estimate for alpha-stable p-adic processes,” *Revisita Statistica*, vol. 72, no. 4, pp. 432-448, 2012.
- [27] R. Sabre, “Estimation of Additive Error in Mixed Spectra for Stable Processes,” *Revisita Statistica*, LXXVII, no. 2, pp. 75-90, 2017.
- [28] E. Masry, “Aliasing-free sampling: An Alternative on ceptualization and its Application,” *IEEE Transactions on Information Theory*, vol. 24, no. 3, pp. 17-24, 1978.
- [29] N. Demesh, “Application of the polynomial kernels to the estimation of the spectra of discrete stable stationary processes,” *(Russian) Akad.Nauk.ukrain. S.S.R. Inst.Mat.*, vol. 64, pp. 12-36, 1988.
- [30] M. H. Bibalan, H. Amindavar, and M. Amirmazaghani, “Characteristic function based parameter estimation of skewed alpha-stable distribution: An analytical approach,” *Signal Processing*, vol. 130, pp. 323-336, 2017.
- [31] R. Sabre, W. Horrigue, and J. C. Simon “Discrete estimation of spectral density for Alpha Stable Signals Observed with an additive error,” *International Journal of Electrical and Computer Engineering*, vol. 14, no. 1, pp. 1-5, 2020.
- [32] A. Janicki and A. Weron, “Simulation and Chaotic behavior of alpha-stable stochastic processes,” *Series: Chapman and Hall/CRC Pure and Applied Mathematics*, New York, 1993.

Copyright © 2022 by the authors. This is an open access article distributed under the Creative Commons Attribution License ([CC BY-NC-ND 4.0](https://creativecommons.org/licenses/by-nc-nd/4.0/)), which permits use, distribution and reproduction in any medium, provided that the article is properly cited, the use is non-commercial and no modifications or adaptations are made.



**Rachid Sabre** received the PhD degree in statistics from the University of Rouen, Rouen, France, in 1993 and Habilitation (HdR) from the University of Burgundy, Dijon, France, in 2003. He joined Agrosup Dijon, Dijon, France, in 1995, where he is an associate professor. From 1998 through 2010, he served as a member of Institut de Mathématiques de Bourgogne, France. He was a member of the Scientific Council AgroSup Dijon from 2009 to 2013. In 2012, he has been a member of Laboratoire Electronique, Informatique, et Image (Le2i), France. Since 2019, he has been a member of Laboratory Biogeosciences UMR CNRS, University of Burgundy. He is author/co-author of numerous papers in scientific and technical journals and conference proceedings. His research interests lie in areas of statistical process and spectral analysis for signal and image processing.