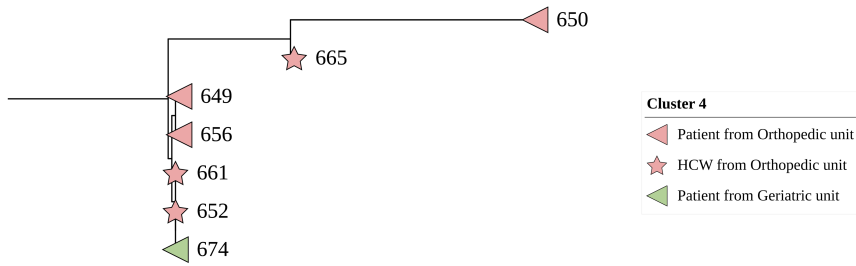


A

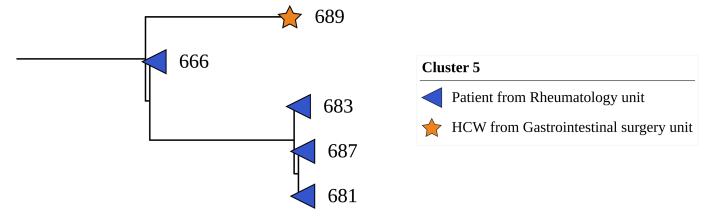


Cluster 4

- ◀ Patient from Orthopedic unit
- ★ HCW from Orthopedic unit
- ◀ Patient from Geriatric unit

	674	649	661	652	656	665	650	655	648	651
674		0	0	0	0	1	3	21	38	35
649	0		0	0	0	1	3	21	38	35
661	0	0		0	0	1	3	21	38	35
652	0	0	0		0	1	3	21	38	35
656	0	0	0	0		1	3	21	38	35
665	1	1	1	1	1		2	22	39	36
650	3	3	3	3	3	2		24	41	38
655	21	21	21	21	21	22	24		30	27
648	38	38	38	38	38	39	41	30		13
651	35	35	35	35	35	36	38	27	13	

B



Cluster 5

- ◀ Patient from Rheumatology unit
- ★ HCW from Gastrointestinal surgery unit

	681	687	683	666	689	667	671	669
681		0	0	1	2	8	8	11
687	0		0	1	2	8	8	11
683	0	0		1	2	8	8	11
666	1	1	1		1	7	7	10
689	2	2	2	1		8	8	11
667	8	8	8	7	8		4	7
671	8	8	8	7	8	4		7
669	11	11	11	10	11	7	7	

C

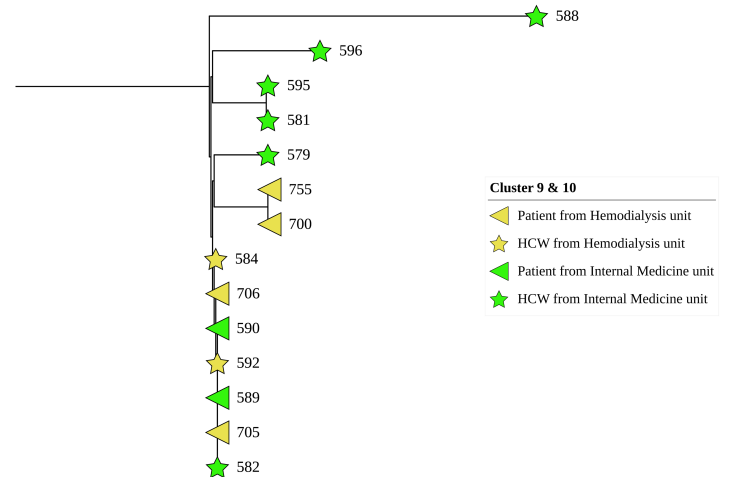


Cluster 12

- ◀ Patient from pediatric unit
- ★ HCW from pediatric unit

	617	621	613	615	624	626	618	620	611	612	610
617		0	0	0	0	0	1	1	17	20	27
621	0		0	0	0	0	1	1	17	20	27
613	0	0		0	0	0	1	1	17	20	27
615	0	0	0		0	0	1	1	17	20	27
624	0	0	0	0		0	1	1	17	20	27
626	0	0	0	0	0		1	1	17	20	27
618	1	1	1	1	1	1		2	18	21	28
620	1	1	1	1	1	1	2		18	21	28
611	17	17	17	17	17	17	18	18		13	22
612	20	20	20	20	20	20	21	21	13		25
610	27	27	27	27	27	27	28	28	22	25	

D



Cluster 9 & 10

- ◀ Patient from Hemodialysis unit
- ★ HCW from Hemodialysis unit
- ◀ Patient from Internal Medicine unit
- ★ HCW from Internal Medicine unit

	706	582	584	592	589	590	705	579	755	700	581	595	596	588	703	593	701
706		0	0	0	0	0	0	1	1	1	1	1	2	6	19	32	29
582	0		0	0	0	0	0	1	1	1	1	1	2	6	19	32	29
584	0	0		0	0	0	0	1	1	1	1	1	2	6	19	32	29
592	0	0	0		0	0	0	1	1	1	1	1	2	6	19	32	29
589	0	0	0	0		0	0	1	1	1	1	1	2	6	19	32	29
590	0	0	0	0	0		0	1	1	1	1	1	2	6	19	32	29
705	0	0	0	0	0	0		1	1	1	1	1	2	6	19	32	29
579	1	1	1	1	1	1	1		2	2	2	2	3	7	20	33	30
755	1	1	1	1	1	1	1	2		2	2	2	3	4	17	29	28
700	1	1	1	1	1	1	1	2	0		2	2	3	7	20	33	30
581	1	1	1	1	1	1	1	2	2	2		0	3	7	20	33	30
595	1	1	1	1	1	1	1	2	2	2	0		3	7	20	33	30
596	2	2	2	2	2	2	2	3	3	3	3	3		7	21	34	31
588	6	6	6	6	6	6	6	7	4	7	7	7	7		25	38	34
703	19	19	19	19	19	19	19	20	17	20	20	20	21	25		37	34
593	32	32	32	32	32	32	32	33	29	33	33	33	34	38	37		9
701	29	29	29	29	29	29	29	30	28	30	30	30	31	34	34	9	