



Prospective associations between psychosocial work factors and self-reported health: study of effect modification by gender, age, and occupation using the national French working conditions survey data

Isabelle Niedhammer, Laura Derouet-Gérault, Sandrine Bertrais

► To cite this version:

Isabelle Niedhammer, Laura Derouet-Gérault, Sandrine Bertrais. Prospective associations between psychosocial work factors and self-reported health: study of effect modification by gender, age, and occupation using the national French working conditions survey data. BMC Public Health, 2022, 22 (1), pp.1389. 10.1186/s12889-022-13773-x . hal-03771861

HAL Id: hal-03771861

<https://hal.science/hal-03771861>

Submitted on 7 Sep 2022

HAL is a multi-disciplinary open access archive for the deposit and dissemination of scientific research documents, whether they are published or not. The documents may come from teaching and research institutions in France or abroad, or from public or private research centers.

L'archive ouverte pluridisciplinaire **HAL**, est destinée au dépôt et à la diffusion de documents scientifiques de niveau recherche, publiés ou non, émanant des établissements d'enseignement et de recherche français ou étrangers, des laboratoires publics ou privés.



Distributed under a Creative Commons Attribution 4.0 International License

RESEARCH

Open Access



Prospective associations between psychosocial work factors and self-reported health: study of effect modification by gender, age, and occupation using the national French working conditions survey data

Isabelle Niedhammer* , Laura Derouet-Gérault and Sandrine Bertrais

Abstract

Background: Prospective studies exploring the effects of psychosocial work factors on self-reported health (SRH) are lacking, especially those studying effect modifications. The objectives were to examine the prospective associations of these factors, and multiple exposures to these factors, with SRH in a national representative sample, and effect modifications by gender, age, and occupation.

Methods: The prospective study relied on the three data collection waves (2013, 2016, and 2019) of the national French Working Conditions survey and was based on a sample of 15,971 employees, in good SRH at the beginning of the follow-up period. The occupational exposures were time-varying variables measured in 2013 and 2016, and included: 20 psychosocial work factors grouped into 5 broad domains, 4 exposures related to working time/hours and 4 physical-biomechanical-chemical exposures. The incidence of poor SRH three years later was the outcome. Discrete time Poisson regression models were performed using weighted data and with adjustment for gender, age, marital status, life events, and occupation.

Results: Almost all the studied psychosocial work factors were predictive of poor SRH. Some physical-biomechanical-chemical exposures were found to predict poor SRH. Only rare effect modifications were observed according to gender, age, and occupation. Dose-response associations between multiple exposures and the incidence of poor SRH were observed for 4 among 5 domains of psychosocial work factors.

Conclusions: Our study underlined the effects of psychosocial work factors, as well as multiple exposure effects, on the incidence of poor SRH. However, most of these effects were the same across population groups related to gender, age, and occupation.

*Correspondence: isabelle.niedhammer@inserm.fr

INSERM, Univ Angers, Univ Rennes, EHESP, Irset (Institut de recherche en santé, environnement et travail) - UMR_S 1085, ESTER Team, 28 rue Roger Amsler, CS 74521, 49045 ANGERS Cedex 01, France



© The Author(s) 2022. **Open Access** This article is licensed under a Creative Commons Attribution 4.0 International License, which permits use, sharing, adaptation, distribution and reproduction in any medium or format, as long as you give appropriate credit to the original author(s) and the source, provide a link to the Creative Commons licence, and indicate if changes were made. The images or other third party material in this article are included in the article's Creative Commons licence, unless indicated otherwise in a credit line to the material. If material is not included in the article's Creative Commons licence and your intended use is not permitted by statutory regulation or exceeds the permitted use, you will need to obtain permission directly from the copyright holder. To view a copy of this licence, visit <http://creativecommons.org/licenses/by/4.0/>. The Creative Commons Public Domain Dedication waiver (<http://creativecommons.org/publicdomain/zero/1.0/>) applies to the data made available in this article, unless otherwise stated in a credit line to the data.

Keywords: Psychosocial work factors, Self-reported health, Occupational exposures, Gender, Age, Occupation Effect modification

Background

Psychosocial work factors defined by psychological and social exposures derived from the work organization and environment have been found as risk factors for various health outcomes, in particular mental disorders and cardiovascular diseases [1]. However, the data are lacking on the effect modifications by gender, age, and social position, although the rare previous studies suggested no or low effect modification [1].

Self-reported health (SRH) is recognized as a marker of general health and has been recommended for use by both WHO and EU commission [2]. SRH has also been shown to be a predictor of future morbidity and mortality [3–6]. A plethora of studies explored the associations between psychosocial work factors and SRH. However, the number of prospective studies, with clear chronological order between exposure and outcome, has been much lower [7–25]. Furthermore, the literature studied neither a large set of these factors nor the impact of multiple exposures, and only a few rare prospective studies explored effect modifications and suggested some effect modifications by gender [10, 22, 23].

The objectives of the present study were therefore to explore the prospective associations between occupational exposures, including a large set of psychosocial work factors and multiple exposures, and SRH in a nationally representative sample of the working population and potential effect modifications by gender, age, and social position.

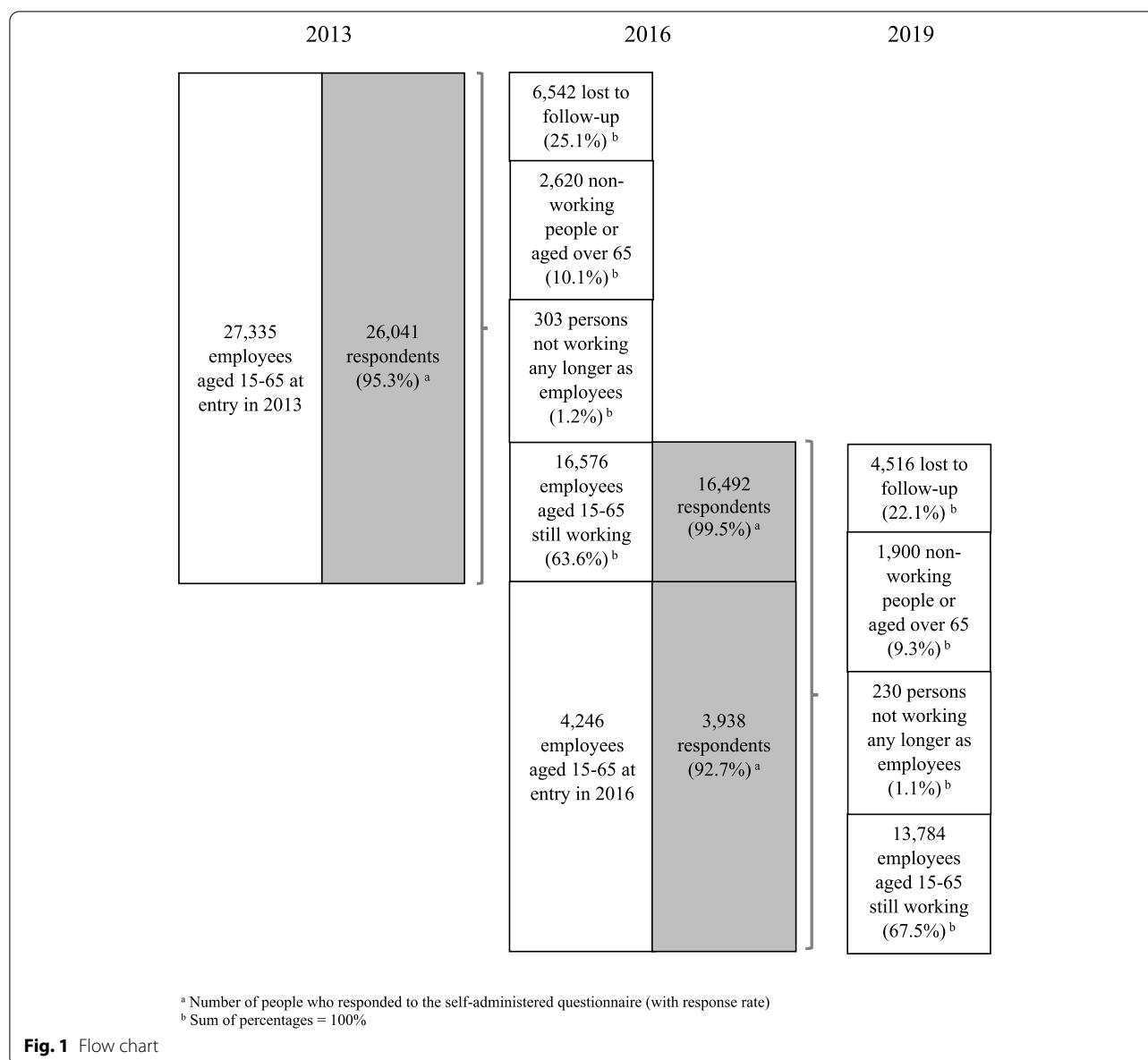
Methods

The study relied on the prospective data from the national French Working Conditions survey collected in 2013, 2016, and 2019 and set up by the French ministry of labour (DARES). The survey design is an open prospective cohort, i.e. people may have moved in and out the cohort during the follow-up. At each wave (2013, 2016, and 2019), the data were collected using a questionnaire administered by interviewer and a self-administered questionnaire. Three of our previous publications explored the cross-sectional associations between psychosocial work factors and various mental health outcomes (sleep problems, depression and anxiety, and suicide ideation) using the 2016 wave of the survey [26–28] and another one studied the prospective associations between psychosocial work factors and well-being using the two first waves (2013 and 2016) [29]. The flow chart presents sample size, response and attrition rates (Fig. 1).

Two follow-up periods were used in the analyses: 2013–2016 and 2016–2019. The sample was restricted to 19,431 employees aged 15–65 at entry into the cohort who were working during a follow-up period.

SRH was chosen as the health outcome and was collected in the questionnaire in 2013, 2016, and 2019, using one single item ('How would you rate your general health status?') with 5 categories (very good, good, fair, poor, very poor) that was dichotomized into two groups: good (very good, good) and poor (fair, poor, very poor) SRH. This dichotomization was retained because the prevalence and incidence of poor/very poor SRH were very low (<5 and <3% respectively). Such a dichotomization was used previously in other studies among the French working population [30]. We studied the incidence of poor SRH three years later among the study sample of employees who were in good SRH at the beginning of a follow-up period.

Psychosocial work factors were collected in the questionnaire and the self-administered questionnaire in 2013 and 2016 and included twenty factors constructed using a total of 61 items. As no validated or recommended questionnaire was used in the survey, these items were selected because they were proxies of the items from the COPSOQ [31]. Some items, though not close to those of the COPSOQ, were considered relevant to the psychosocial work environment (changes at work, temporary employment). These 61 items allowed us to construct 20 factors, including 18 factors that were proxies of the factors of the COPSOQ. Our previous studies using the French Working Conditions survey data used the same strategy to construct psychosocial work factors [26–29]. All psychosocial work factors were grouped into 5 broad domains. Two other domains of occupational exposures were also studied: working time/hours (4 factors) and physical-biomechanical-chemical exposures (4 factors). The Appendix provides details on the content of all these exposures. Low and high exposure groups were defined using the initial coding for the factors based on one item and using the median of the total sample in 2013 as cut-off for the factors based on the sum of two or more items. Multiple exposures were constructed by summing the factors of the same domain. Multiple exposure was also calculated for all psychosocial work factors together, and defined using quartiles of the sum of all factors. The list of all domains and factors with corresponding number of items per each factor is provided in the Appendix (Additional file 1). The Appendix also provides median values



to define low or high levels of exposure, and Cronbach's alphas to assess internal consistency, as well as more information on the construction of the factors. Internal consistency was found to be satisfactory for most factors, but lower for some of them (for example predictability). Tetrachoric correlation coefficients were calculated between factors and are presented in Supplementary Table S1. Correlation coefficients were found to be low for most of these correlations. The study of multiple exposures to psychosocial work factors was a way to take the overlap, if any, between factors into account.

All statistical analyses were done using weighted data to correct for potential non-response and attrition bias

and provide results that could be extrapolated to the target population. The prospective associations between occupational exposures, as time-varying variables (i.e. in 2013 or 2016), and the incidence of poor SRH three years later (i.e. in 2016 or 2019) were explored using discrete time Poisson regression models, with weighted data (option Stata pweight) and robust variance estimation (option Stata vce (robust)), and with adjustment for gender and the following time-varying covariates: age (4 10-year age groups), marital status (cohabiting or not), life events within the 3-year period (among 4 events: serious health problems of oneself or close family member, death of close family member, family conflict, and

exposure to violence), and occupation (4 occupational groups) as a marker of social position. To explore effect modifications by gender, age, and occupation, multiplicative interaction terms were tested. Statistical trend tests were performed using orthogonal polynomial contrasts to study the dose-response associations between multiple exposures (i.e. the number of exposures) and the incidence of poor SRH. Multiple testing was corrected using False Discovery Rate (FDR), which is a method to control “the expected proportion of errors among the rejected hypotheses” [32]. All statistical analyses were performed using the following softwares: SAS version 9.04 and Stata version 15.0.

Sensitivity analyses included: (i) performing additional adjustment for chronic disease, (ii) performing additional adjustment for full/part time work, (iii) restricting the study sample to employees who stayed in the same job during follow-up, and (iv) performing additional adjustment for working time/hours and physical-biomechanical-chemical exposures in the study of multiple exposures to psychosocial work factors and SRH.

Results

Among the sample of 19,431 employees, we retained for analysis only those with good SRH at the beginning of each follow-up period (in 2013 or 2016), i.e. 15,971 employees. Among them, 12,669 employees entered into the cohort in 2013 and were followed up from 2013 and 2016, including 6938 employees who continued to be followed up from 2016 to 2019. A total of 3302 employees entered into the cohort in 2016 and were followed up from 2016 to 2019. The incidence of poor SRH was 18.2% for the first period of follow-up (i.e. between 2013 and 2016 for those who entered into the cohort in 2013, and between 2016 and 2019 for those who entered in 2016) and 14.4% for the second period of follow-up (i.e. between 2016 and 2019). Descriptive statistics can be found in Supplementary Tables S2-S3.

Almost all psychosocial work factors were predictive of poor SRH, except cognitive demands and temporary employment (Table 1). After multiple testing correction according to FDR, one factor, emotional demands, was not predictive of poor SRH any longer. Biomechanical, fumes/dust and noise exposures predicted poor SRH.

A total of 6 effect modifications were observed: one by gender, one by age, and four by occupation (Table 2). Nevertheless, after correction for multiple testing, all the interactions were no longer significant, meaning no effect modification by gender, age, and occupation.

Statistical trend tests were significant for all measures of multiple exposure to psychosocial work factors for all domains (except violence) and for all psychosocial work factors together (Fig. 2), suggesting dose-response

Table 1 Prospective associations between occupational factors and the incidence of poor SRH among the study sample of 15,971 employees

	RR	95% CI		<i>p</i> -value	
Demands at work					
Quantitative demands	1.36	1.21	–	1.53	< 0.001
Cognitive demands	1.11	0.99	–	1.25	0.086
Emotional demands	1.13	1.00	–	1.27	0.044 ‡
Demands for hiding emotions	1.24	1.10	–	1.39	< 0.001
Work organization and job content					
Low influence	1.14	1.02	–	1.28	0.018
Low degree of freedom	1.23	1.10	–	1.37	< 0.001
Low possibilities for development	1.19	1.06	–	1.33	0.003
Low meaning of work	1.32	1.19	–	1.47	< 0.001
Interpersonal relations					
Low predictability	1.13	1.01	–	1.26	0.032
Low role clarity	1.44	1.26	–	1.64	< 0.001
Role conflict	1.39	1.24	–	1.56	< 0.001
Low social support	1.22	1.09	–	1.38	0.001
Low sense of community	1.38	1.24	–	1.54	< 0.001
Work–individual interface					
Low job satisfaction	1.27	1.13	–	1.42	< 0.001
Work–family conflict	1.17	1.04	–	1.32	0.010
Job insecurity	1.20	1.05	–	1.37	0.007
High changes at work	1.34	1.19	–	1.50	< 0.001
Temporary employment	1.10	0.86	–	1.39	0.445
Workplace violence					
Internal violence	1.27	1.14	–	1.43	< 0.001
External violence	1.22	1.08	–	1.37	0.001
Working time/hours					
Long working hours (> 48 h/week)	0.84	0.67	–	1.04	0.113
Shift work	0.95	0.79	–	1.15	0.624
Unsocial work days	1.03	0.90	–	1.19	0.641
Night work	0.97	0.75	–	1.26	0.833
Physical exposures					
Biomechanical exposure	1.28	1.14	–	1.43	< 0.001
Fumes/dust	1.21	1.06	–	1.39	0.006
Toxic/dangerous products	1.05	0.92	–	1.20	0.476
Noise	1.23	1.07	–	1.41	0.004

RR: incidence rate ratio, CI: confidence interval

Each occupational factor was studied separately using discrete time Poisson regression models and weighted data, with adjustment for gender, age, marital status, life events, and occupation

Low or high exposure groups were defined using the initial coding for the factors based on one item (emotional demands, role clarity, work–family conflict, job insecurity, temporary employment) and using the median of the total sample in 2013 as cut-off for the factors based on the sum of two or more items

‡ $p > 0.05$ after correction for multiple testing (FDR)

28 tests were done, 1 or 2 would be significant at 5% even if the null hypotheses were true, and 21 were found to be significant (before correction for multiple testing, FDR, and 20 after correction)

Table 2 Effect modifications by gender, age and occupation for the prospective associations between occupational factors and the incidence of poor SRH among the study sample of 15,971 employees

	RR	95% CI		p-value for interaction
Significant effect modifications by gender ¹				
Job insecurity				0.019‡
Men	1.41	1.16	–	1.73
Women	1.03	0.87	–	1.23
Significant effect modifications by age (years) ²				
Temporary employment				0.002‡
< 30	0.67	0.45	–	1.01
[30–40]	1.73	1.18	–	2.55
[40–50]	1.23	0.82	–	1.85
≥ 50	0.77	0.53	–	1.12
Significant effect modifications by occupation ³				
High changes at work				0.039‡
Managers - professionals	1.52	1.15	–	2.01
Associate professionals - technicians	1.07	0.87	–	1.33
Clerks - service workers	1.60	1.33	–	1.93
Blue-collar workers	1.26	0.98	–	1.61
Shift work				0.006‡
Managers - professionals	0.12	0.03	–	0.48
Associate professionals - technicians	1.07	0.75	–	1.54
Clerks - service workers	1.19	0.87	–	1.64
Blue-collar workers	0.79	0.60	–	1.04
Biomechanical exposure				0.017‡
Managers - professionals	1.05	0.75	–	1.46
Associate professionals - technicians	1.05	0.86	–	1.28
Clerks - service workers	1.50	1.23	–	1.83
Blue-collar workers	1.81	1.25	–	2.62
Toxic/dangerous products				0.018‡
Managers - professionals	0.95	0.64	–	1.42
Associate professionals - technicians	1.03	0.84	–	1.27
Clerks - service workers	1.40	1.13	–	1.72
Blue-collar workers	0.83	0.64	–	1.06

RR incidence rate ratio, CI confidence interval

Each occupational factor was studied separately using discrete time Poisson regression models and weighted data

¹ Adjusted for age, marital status, life events, and occupation² Adjusted for gender, marital status, life events, and occupation³ Adjusted for gender, age, marital status, and life events# $p > 0.05$ after correction for multiple testing (FDR)

84 tests were done, 4 or 5 would be significant at 5% even if the null hypotheses were true, and 6 were found to be significant (before correction for multiple testing, FDR, and 0 after correction)

prospective associations between the number of exposures and the incidence of poor SRH. The associations between multiple exposures to physical-biomechanical-chemical exposures and working time/hours factors and SRH were not significant (not shown).

Sensitivity analyses showed that the results were unchanged after additional adjustment for chronic disease or full/part time work. Restricting the study sample to the employees who remained in the same job during follow-up provided the same results, although two psychosocial work factors were no longer predictive of poor SRH: low influence and work-family conflict. Additional adjustment for working time/hours and physical-biomechanical-chemical exposures in the study of multiple exposures to psychosocial work factors and SRH did not change the results.

Discussion

This study showed that almost all the 20 studied psychosocial work factors were predictive of poor SRH. There was however only rare effect modifications by gender, age, and occupation, suggesting that most of the exposure-outcome associations were the same according to these variables. Dose-response associations were found between multiple exposures to psychosocial work factors and the incidence of poor SRH.

Previous prospective studies reported associations of job insecurity [7–9, 15, 21, 24], high workplace or psychological demands [8–10, 19], low influence and possibilities for development [8–10], low social support [8–10, 14, 19, 22], and conflict or violence [9, 13] and SRH, in agreement with our results. Our study explored a large set and detailed measures of psychosocial work factors and showed that additional factors were predictive of poor SRH, such as role stressors, work-family conflict, changes at work, etc., associations that were not reported before. Few previous studies explored other occupational exposures in association with SRH prospectively, and found associations for long working hours [11], shift work [11], and physical or ergonomic demands [7–9, 19], in line with our results for physical-biomechanical-chemical exposures, but not for working time/hours. Three prospective studies [10, 22, 23] explored effect modifications by gender, age, and/or social position, but only effect modifications by gender were found. In the studies by Schmidt et al. [22] and by Stadin et al. [23], lack of supportive leadership behavior and ICT (information and communication technology) demands at work predicted poor SRH among men and not among women. No effect modification by age and social position (occupation) was reported previously. Our results echoed the literature in the sense that almost no effect modification was found. As both

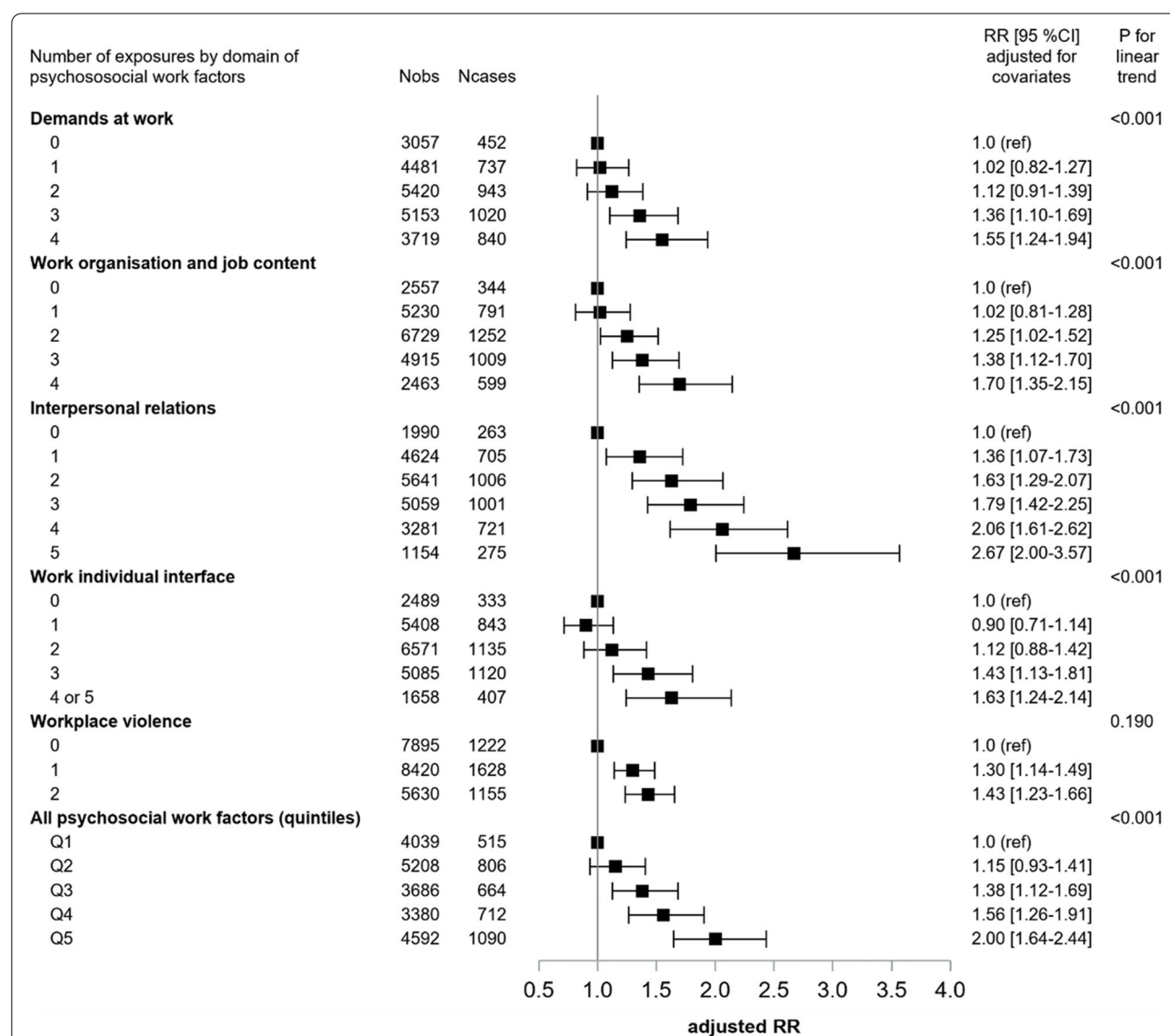


Fig. 2 Prospective associations between multiple exposures to psychosocial work factors and the incidence of poor SRH among the study sample of 15,971 employees

the test of multiplicative interaction terms and correction for multiple testing may be conservative, the rare interactions observed in our study may be of interest. In particular, the interaction between gender and job insecurity suggested that job insecurity might predict poor SRH among men only, referring to the breadwinner model. Similar findings were found in the literature for mental health outcomes [33–37]. There was no previous study examining multiple exposures in association with SRH, consequently our study may be the first one to suggest the deleterious effects of multiple exposures to psychosocial work factors on SRH.

Strengths of our study deserve to be presented. Our study had a prospective design with clear chronological order between exposure and outcome. Response and follow-up rates were satisfactory and did not lead to major response and attribution bias. Indeed, the comparison between respondents and people lost to follow-up did not show major differences (although some of these differences were statistically significant) in the studied covariates, occupational exposures and SRH (Supplementary Table S4). Furthermore, we used weights to correct for these potential biases. It should be noticed that when the statistical analyses were done without weighted

data, the results were the same as well as our conclusions. The study sample was large and nationally representative. We used time-varying exposure measures and studied a large set of exposures and multiple exposures. We tested effect modifications by gender, age, and occupation, which has been very seldom in the literature. We used SRH as a recognized general health outcome. Our models were adjusted for relevant covariates. We performed a correction for multiple testing. Nevertheless, correction for multiple testing may be a conservative approach, especially in the case of high number of tests, and rare and low true associations. This was not the case for the study of the associations between psychosocial work factors and SRH (these associations were almost all significant), but this was the case for the study of interactions (only some rare interactions were found). Consequently, some interactions might truly be significant. The issue of whether or not correcting for multiple testing has been debated at length in the literature with pros and cons [38, 39]. This is why we presented all our results before and after correction for multiple testing. Sensitivity analyses confirmed our results.

Some limitations may nevertheless be underlined. A healthy worker effect may be low as we found no major difference in the results of the main analysis and the sensitivity analysis restricted to the employees who stayed in the same job during follow-up. There was a potential reporting bias, as both exposures and outcome were self-reported. In addition, this bias may be related to personal factors such as personal coping pattern or response style, which were not available and not controlled for. Nevertheless, SRH is by definition a perception. Furthermore, reporting bias may be low given the prospective design of the study. We constructed proxies of the factors of the COPSOQ, as the recommended COPSOQ questionnaire was not used, which may have led to imprecision and misclassification. Furthermore, imprecision and misclassification may be higher for the factors that were based on a lower number of items and/or displayed lower internal consistency. Information was also lacking in the changes in the exposures between two waves of data collection, leading to lack of precision, misclassification, and bias towards the null hypothesis. Some psychosocial work factors (organization injustice for example) and covariates (social support outside the workplace for example) may be missing. We tested multiplicative interaction terms to study effect modifications, and this approach is considered conservative, compared to other approaches (additive interaction for example). Nevertheless, the test of additive gender-related interactions in our study provided two significant interactions only for job insecurity –that was also found with the test of multiplicative interactions- and for noise. Consequently, there was no major

differences between multiplicative and additive interactions. This might be explained by a high statistical power related to large sample size.

To conclude, psychosocial work factors were found to predict the incidence of poor SRH. Almost all the associations of these factors with SRH were the same across gender, age, and occupation groups. Multiple exposure to these factors displayed dose-response associations with poor SRH. Comprehensive prevention oriented towards the psychosocial work environment is likely to improve SRH in the whole working population. More attention should be given to multiple exposures to psychosocial work factors.

Supplementary Information

The online version contains supplementary material available at <https://doi.org/10.1186/s12889-022-13773-x>.

Additional file 1.

Additional file 2.

Acknowledgements

The authors thank the members of DARES (French ministry of labour) and all the participants to the French Working Conditions surveys, who made this study possible.

Authors' contributions

IN conceived the study protocol, performed the literature review, made contributions to the statistical analysis, drafted and revised the manuscript. SB performed the statistical analysis, prepared the presentation of the results, and made contributions to study protocol and manuscript revisions. LDG made contributions to the statistical analysis. All authors read and approved the final manuscript.

Funding

The study was supported by DARES of the French ministry of labour (grant number: 2018/037). DARES had no role in study design; in the analysis and interpretation of data; in the writing of the manuscript; and in the decision to submit the manuscript for publication.

Availability of data and materials

The dataset used and analysed during the current study are available from the corresponding author on reasonable request.

Declarations

Ethics approval and consent to participate

The survey was approved by French ethics committees (CNIL no 2015–079 and CNIS no 2015X073TV). All people who were included in the sample agreed to participate in the survey and signed the informed consent form. All methods were carried out in accordance with relevant guidelines and regulations.

Consent for publication

Not applicable.

Competing interests

The authors declare that they have no competing interests. Isabelle Niedhammer is a Senior Editorial Board Member for BMC Public Health but had no role in the editorial process.

Received: 21 March 2022 Accepted: 12 July 2022

Published online: 19 July 2022

References

- Niedhammer I, Bertrais S, Witt K. Psychosocial work exposures and health outcomes: a meta-review of 72 literature reviews with meta-analysis. *Scand J Work Environ Health*. 2021;47(7):489–508.
- de Bruin A, Picavet H, Nossikov A. Health interview surveys: towards international harmonization of methods and instruments. WHO regional publications - European series no 58, World Health Organization. Copenhagen: Regional Office for Europe; 1996.
- DeSalvo KB, Bloser N, Reynolds K, He J, Muntner P. Mortality prediction with a single general self-rated health question. A meta-analysis. *J Gen Intern Med*. 2006;21(3):267–75.
- Idler EL, Benyamini Y. Self-rated health and mortality: a review of twenty-seven community studies. *J Health Soc Behav*. 1997;38(1):21–37.
- Kawada T. Self-rated health and life prognosis. *Arch Med Res*. 2003;34(4):343–7.
- Mavaddat N, Parker RA, Sanderson S, Mant J, Kinmonth AL. Relationship of self-rated health with fatal and non-fatal outcomes in cardiovascular disease: a systematic review and meta-analysis. *PLoS One*. 2014;9(7):e103509.
- Barrech A, Baumert J, Gundel H, Ladwig KH. The impact of job insecurity on long-term self-rated health - results from the prospective population-based MONICA/KORA study. *BMC Public Health*. 2018;18(1):754.
- Borg V, Kristensen TS, Burr H. Work environment and changes in self-rated health: a five year follow-up study. *Stress Medicine*. 2000;16:37–47.
- Bronholt RLL, Hansen MB, Islamoska S, Christensen U, Grynderup MB, Nabe-Nielsen K. Physical and psychosocial work factors as explanations for social inequalities in self-rated health. *Int Arch Occup Environ Health*. 2021;94(2):335–46.
- Burr H, Hasselhorn HM, Kersten N, Pohrt A, Rugulies R. Does age modify the association between psychosocial factors at work and deterioration of self-rated health? *Scand J Work Environ Health*. 2017;43(5):465–74.
- Cho SS, Ki M, Kim KH, Ju YS, Paek D, Lee W. Working hours and self-rated health over 7 years: gender differences in a Korean longitudinal study. *BMC Public Health*. 2015;15:1287.
- Cullati S. The influence of work-family conflict trajectories on self-rated health trajectories in Switzerland: a life course approach. *Soc Sci Med*. 2014;113:23–33.
- De Raeye L, Jansen NW, van den Brandt PA, Vasse R, Kant IJ. Interpersonal conflicts at work as a predictor of self-reported health outcomes and occupational mobility. *Occup Environ Med*. 2009;66(1):16–22.
- Falkenberg A, Nyfjall M, Hellgren C. Social support at work and leisure time and its association with self-rated health and sickness absence. *Work*. 2012;43(4):469–74.
- Ferrie JE, Shipley MJ, Stansfeld SA, Marmot MG. Effects of chronic job insecurity and change in job security on self reported health, minor psychiatric morbidity, physiological measures, and health related behaviours in British civil servants: the Whitehall II study. *J Epidemiol Community Health*. 2002;56(6):450–4.
- Kim MH, Kim CY, Park JK, Kawachi I. Is precarious employment damaging to self-rated health? Results of propensity score matching methods, using longitudinal data in South Korea. *Soc Sci Med*. 2008;67(12):1982–94.
- Leineweber C, Eib C, Peristera P, Bernhard-Oettel C. The influence of and change in procedural justice on self-rated health trajectories: Swedish longitudinal occupational survey of health results. *Scand J Work Environ Health*. 2016;42(4):320–8.
- Mustard CA, Vermeulen M, Lavis JN. Is position in the occupational hierarchy a determinant of decline in perceived health status? *Soc Sci Med*. 2003;57(12):2291–303.
- Niedhammer I, Chea M. Psychosocial factors at work and self reported health: comparative results of cross sectional and prospective analyses of the French GAZEL cohort. *Occup Environ Med*. 2003;60(7):509–15.
- Niedhammer I, Tek ML, Starke D, Siegrist J. Effort-reward imbalance model and self-reported health: cross-sectional and prospective findings from the GAZEL cohort. *Soc Sci Med*. 2004;58(8):1531–41.
- Rugulies R, Aust B, Burr H, Bultmann U. Job insecurity, chances on the labour market and decline in self-rated health in a representative sample of the Danish workforce. *J Epidemiol Community Health*. 2008;62(3):245–50.
- Schmidt B, Herr RM, Jarczok MN, Baumert J, Lukaschek K, Emery RT, et al. Lack of supportive leadership behavior predicts suboptimal self-rated health independent of job strain after 10 years of follow-up: findings from the population-based MONICA/KORA study. *Int Arch Occup Environ Health*. 2018;91(5):623–31.
- Stadin M, Nordin M, Brostrom A, Magnusson Hanson LL, Westerlund H, Fransson EI. Repeated exposure to high ICT demands at work, and development of suboptimal self-rated health: findings from a 4-year follow-up of the SLOSH study. *Int Arch Occup Environ Health*. 2019;92(5):717–28.
- Urbanaviciute I, De Witte H, Rossier J. Perceived job insecurity and self-rated health: testing reciprocal relationships in a five-wave study. *Soc Sci Med*. 2019;233:201–7.
- Virtanen P, Pentti J, Vahtera J, Kivimäki M, Virtanen M. Self-rated health of the temporary employees in a Nordic welfare state: findings from the Finnish public sector study. *J Occup Environ Med*. 2018;60(2):e106–e11.
- Bertrais S, André N, Bègue M, Chastang JF, Niedhammer I. Associations between multiple occupational exposures and sleep problems: Results from the national French Working Conditions survey. *J Sleep Res*; 2020. p. e13101.
- Bertrais S, Maurox A, Chastang JF, Niedhammer I. Associations of multiple occupational exposures with major depressive and generalized anxiety disorders: findings from the French National Working Conditions Survey. *Depress Anxiety*. 2021;38(3):337–50.
- Niedhammer I, Bègue M, Chastang JF, Bertrais S. Psychosocial work exposures and suicide ideation: a study of multiple exposures using the French national working conditions survey. *BMC Public Health*. 2020;20(1):895.
- Bertrais S, Hérault N, Chastang JF, Niedhammer I. Multiple psychosocial work exposures and well-being among employees: prospective associations from the French national working conditions survey. *Scand J Public Health*. 2022;50(4):419–23.
- Lesuffleur T, Chastang JF, Cavet M, Niedhammer I. Psychosocial work factors and self-reported health in the French national SUMER survey. *Sante Publique*. 2015;27(2):177–86.
- Kristensen TS, Hannerz H, Hogh A, Borg V. The Copenhagen Psychosocial Questionnaire—a tool for the assessment and improvement of the psychosocial work environment. *Scand J Work Environ Health* 2005;31(6):438–449.
- Benjamini Y, Hochberg Y. Controlling the false discovery rate: a practical and powerful approach to multiple testing. *J R Statist Soc B*. 1995;57(1):289–300.
- Bultmann U, Kant IJ, van den Brandt PA, Kasl SV. Psychosocial work characteristics as risk factors for the onset of fatigue and psychological distress: prospective results from the Maastricht cohort study. *Psychol Med*. 2002;32(2):333–45.
- Kim MS, Hong YC, Yook JH, Kang MY. Effects of perceived job insecurity on depression, suicide ideation, and decline in self-rated health in Korea: a population-based panel study. *Int Arch Occup Environ Health*. 2017;90(7):663–71.
- LaMontagne AD, Too LS, Punnett L, Milner AJ. Changes in job security and mental health: an analysis of 14 annual waves of an Australian working-population panel survey. *Am J Epidemiol*. 2021;190(2):207–15.
- Lassalle M, Chastang JF, Niedhammer I. Working conditions and psychotropic drug use: cross-sectional and prospective results from the French national SIP study. *J Psychiatr Res*. 2015;63:50–7.
- Rugulies R, Bultmann U, Aust B, Burr H. Psychosocial work environment and incidence of severe depressive symptoms: prospective findings from a 5-year follow-up of the Danish work environment cohort study. *Am J Epidemiol*. 2006;163(10):877–87.
- Rothman KJ. No adjustments are needed for multiple comparisons. *Epidemiology*. 1990;1(1):43–6.
- Bender R, Lange S. Adjusting for multiple testing—when and how? *J Clin Epidemiol* 2001;54(4):343–349.

Publisher's Note

Springer Nature remains neutral with regard to jurisdictional claims in published maps and institutional affiliations.