



HAL
open science

Tetraspanin8 expression predicts an increased metastatic risk and is associated with cancer-related death in human cutaneous melanoma

Odile Berthier-Vergnes, Laetitia Barbolat-Boutrand, Roxane Pommier, Arnaud de la Fouchardière, Patrick Combemale, Maxime Grimont, Noémie Lopez-Ramirez, Julie Caramel, Stéphane Dalle, Jean-Luc Perrot, et al.

► To cite this version:

Odile Berthier-Vergnes, Laetitia Barbolat-Boutrand, Roxane Pommier, Arnaud de la Fouchardière, Patrick Combemale, et al.. Tetraspanin8 expression predicts an increased metastatic risk and is associated with cancer-related death in human cutaneous melanoma. *Molecular Cancer*, 2021, 20 (1), pp.127. 10.1186/s12943-021-01429-0 . hal-03769009

HAL Id: hal-03769009

<https://hal.science/hal-03769009>

Submitted on 19 Jul 2023

HAL is a multi-disciplinary open access archive for the deposit and dissemination of scientific research documents, whether they are published or not. The documents may come from teaching and research institutions in France or abroad, or from public or private research centers.


L'archive ouverte pluridisciplinaire **HAL**, est destinée au dépôt et à la diffusion de documents scientifiques de niveau recherche, publiés ou non, émanant des établissements d'enseignement et de recherche français ou étrangers, des laboratoires publics ou privés.

LETTER TO THE EDITOR

Open Access



Tetraspanin8 expression predicts an increased metastatic risk and is associated with cancer-related death in human cutaneous melanoma

Odile Berthier-Vergnes¹, Laetitia Barbollat-Boutrand^{2†}, Roxane M. Pommier^{2†}, Arnaud de la Fouchardière^{2,3}, Patrick Combemale³, Maxime Grimont², Noémie Lopez-Ramirez², Julie Caramel², Stéphane Dalle², Jean-Luc Perrot⁴, Caroline Gaudy-Marqueste⁵, Nicolas Macagno⁵, Sandrine Mansard⁶, Fanny Bouquet⁷ and Ingrid Masse^{1,2*} 

Cutaneous malignant melanoma remains an aggressive cancer given its high metastatic proclivity. Numerous patients with newly diagnosed cutaneous melanoma have early lesions, which can be cured by surgery. When patients have to face advanced-stage melanomas with distant metastases, the mean survival time remains low, despite the development of recent therapies [1]. The conventional diagnostic and prognostic biomarkers (i.e. Clark Level (CL), Breslow Index (BI) or immunohistochemical markers [2]) seem insufficient to distinguish precisely primary epidermis-limited neoplasms from aggressive or advanced/metastatic melanomas, and to assess the outcome for individual patients. Thus, additional relevant biomarkers are needed to predict the individual risk of metastasis and monitor disease progression.

We previously showed that Tspan8, a known inducer of invasion in carcinomas, is sufficient to confer invasiveness to non-invasive melanoma cells [3–5]. We demonstrated that Tspan8 expression is sufficient to confer

invasive properties to non-invasive melanoma cells in boyden assays in 2D-cultured cells [3, 4] but also in 3D skin-reconstructs models [5]. Moreover, we identified several Tspan8 transcriptional regulators whose deregulation leads to Tspan8 expression [3, 5, 6], which could help to design new therapeutic strategies targeting Tspan8. Indeed, Tspan8 emerges recently as a blood biomarker [7] but also as a promising therapeutic target in various carcinomas, since Tspan8 blocking antibodies decreased angiogenesis [8], cell motility [9], tumor growth in mice [10] and metastasis [11, 12]. We showed that early melanoma spreading in skin-reconstruct models was reduced by Tspan8-specific antibody [5]. Tspan8 could also be a relevant target for radio-immunotherapy [12]. In this context, we wondered whether Tspan8, whose expression is highly correlated with acquisition of invasiveness, could be a potential new biomarker for early detection prognosis which could help to predict metastasis risk in individual patients, including those bearing thin melanomas that, in some cases, can metastasize and cause patients deaths.

Here, we demonstrated that Tspan8 was more frequently expressed in metastatic samples and that Tspan8 expression was correlated with the presence of a BRAF^{V600E} mutation, a higher propensity to give rise to distant metastases and an increased risk of death.

*Correspondence: ingrid.masse@univ-lyon1.fr

[†]Laetitia Barbollat-Boutrand and Roxane M. Pommier contributed equally to this work.

² Centre de Recherche en Cancérologie de Lyon, UMR Inserm 1052 CNRS 5286 Centre Leon Berard, Batiment Cheney D, 2eme etage, 28 rue Laennec, 69373 Cedex 08 Lyon, France

Full list of author information is available at the end of the article



Results and discussion

High *TSPAN8* mRNA expression is linked to metastatic dissemination in the TCGA cohort

We previously showed that Tspan8 expression is restricted to invasive melanoma cell lines [13]. However, when Tspan8 expression was studied in the sixty-three cell lines from the Cancer Cell Line Encyclopedia (CCLE), very low levels of *TSPAN8* mRNA and protein were observed (sup. Figure 1a-c). Heterogeneous but easily detectable Tspan8 expression levels were observed in vitro only in short-term cultures derived from metastatic pleural effusions from patients developing a primary invasive melanoma [14] (unpublished results; sup. Figure 1d). We can surmise that classic establishment of cell lines, that favors cell proliferative capacities rather than invasiveness, leads to a low Tspan8 expression, which is not representative of Tspan8 expression observed in situ in primary melanoma samples [13]. To overcome this in vitro problem, we performed our studies in patient samples.

We first analyzed *TSPAN8* mRNA expression in the data set from The Cancer Genome Atlas (TCGA; <https://cancergenome.nih.gov/>) and observed a heterogeneous expression. To decipher the inner structure of the *TSPAN8* expression distribution across the cohort, we applied Gaussian finite mixture models (mclust R package) and highlighted 2 groups of tumors: 1/3 of samples showed absent/low (in black) *TSPAN8* mRNA expression and 2/3 of samples displayed a higher one (in red) (Fig. 1a). These two groups have been used for further analyses.

No correlation was found with CL, neither on the totality of the 414 samples nor on the 100 primary samples only (Fig. 1b). However, BI analysis surprisingly revealed that melanoma samples displaying a high *TSPAN8* expression were more frequently thin melanomas (Fig. 1c, left panel). This highly significant effect was completely lost when only primary melanomas were analyzed (Fig. 1c, right panel), that can be explained by the fact that, in the TCGA cohort, mRNA expression data from primary melanomas are available only for thick melanomas (sup. Figure 2a), probably due to the small amount of tumor material for thin melanomas. Nevertheless, in this cohort, all thin melanomas gave rise to metastases, which could link *TSPAN8* mRNA expression to metastatic properties.

Accordingly, high *TSPAN8* expression was observed in 44.4% of regional cutaneous tissues, 41.9% of regional lymph nodes and 42.1% of distant metastases, versus 26% for primary tumors (Fig. 1d). Overall, we observed that only 26% of primary melanomas displayed high *TSPAN8* expression, whereas local or distant melanoma dissemination was significantly associated with a more frequent

TSPAN8 expression (Fig. 1e), consistently with the correlation of Tspan8 expression with invasiveness previously demonstrated in vitro [3, 4, 6, 13].

Tspan8 protein expression in human primary melanomas was correlated with a higher propensity to give rise to distant metastases and an increased risk of death

To evaluate the impact of Tspan8 expression at the protein level, we performed Tspan8 immunohistochemical staining analysis in a cohort of 100 primary melanoma samples: 73% of primary melanomas were positive for Tspan8 protein expression (sup. Figure 2b), without any significant differences depending on patient age or gender (sup. Figure 2c,d). We analyzed Tspan8 immunostaining in details, and sections were scored positive if any reactive areas were seen in melanoma lesions with growing intensity from 0 (no staining) to 4 (strong staining) (Fig. 2a, four first panel). Tspan8 staining is often clonal with some positive clones neighboring some negative areas (Fig. 2a, third panel), but could also be detected in the invasive front of the tumor (Fig. 2a, fifth panel) and, even if the majority of melanoma cells harbored a cytoplasmic staining, some rare cells in some samples presented a stronger staining at the membrane (Fig. 2a, sixth panel).

In accordance with the TCGA cohort, no correlation with CL (sup. Figure 2e) or BI emerged (sup. Figure 2f,g). However, Tspan8 was more frequently expressed in samples from patients who died during the 5-year period after the melanoma diagnosis than in samples from patients who remained alive, and especially for thin melanomas, inferior to 1 mm (Fig. 2b). Tspan8 protein seemed more frequently expressed in the thinnest melanomas from patients dead during the 5-year period after diagnosis (92.3% of samples). Moreover, the thinnest primary melanomas seemed to express the highest levels of Tspan8 protein (immunointensity score 4 exclusively in < 1 mm samples), especially in patients' dead 5-years after diagnosis (60% of immunointensity scores 3–4; Fig. 2c).

Besides, only 65% of primary tumors that did not give metastases expressed Tspan8 whereas in primary tumors that disseminated, 84.6% expressed Tspan8 (Fig. 2d), demonstrating that Tspan8 expression in primary tumors was significantly correlated with the propensity to metastasize. Interestingly, in thin melanomas (less than 1 mm) especially, 11 among 12 samples (91.7%) from patients who died during the 5 years after the melanoma diagnosis gave rise to metastasis and 10 of them (90.9%) expressed Tspan8 protein, strengthening the correlation between Tspan8 protein expression and metastatic dissemination in thin melanomas. These results are particularly interesting since it is known that patients bearing thinner melanomas with no deep

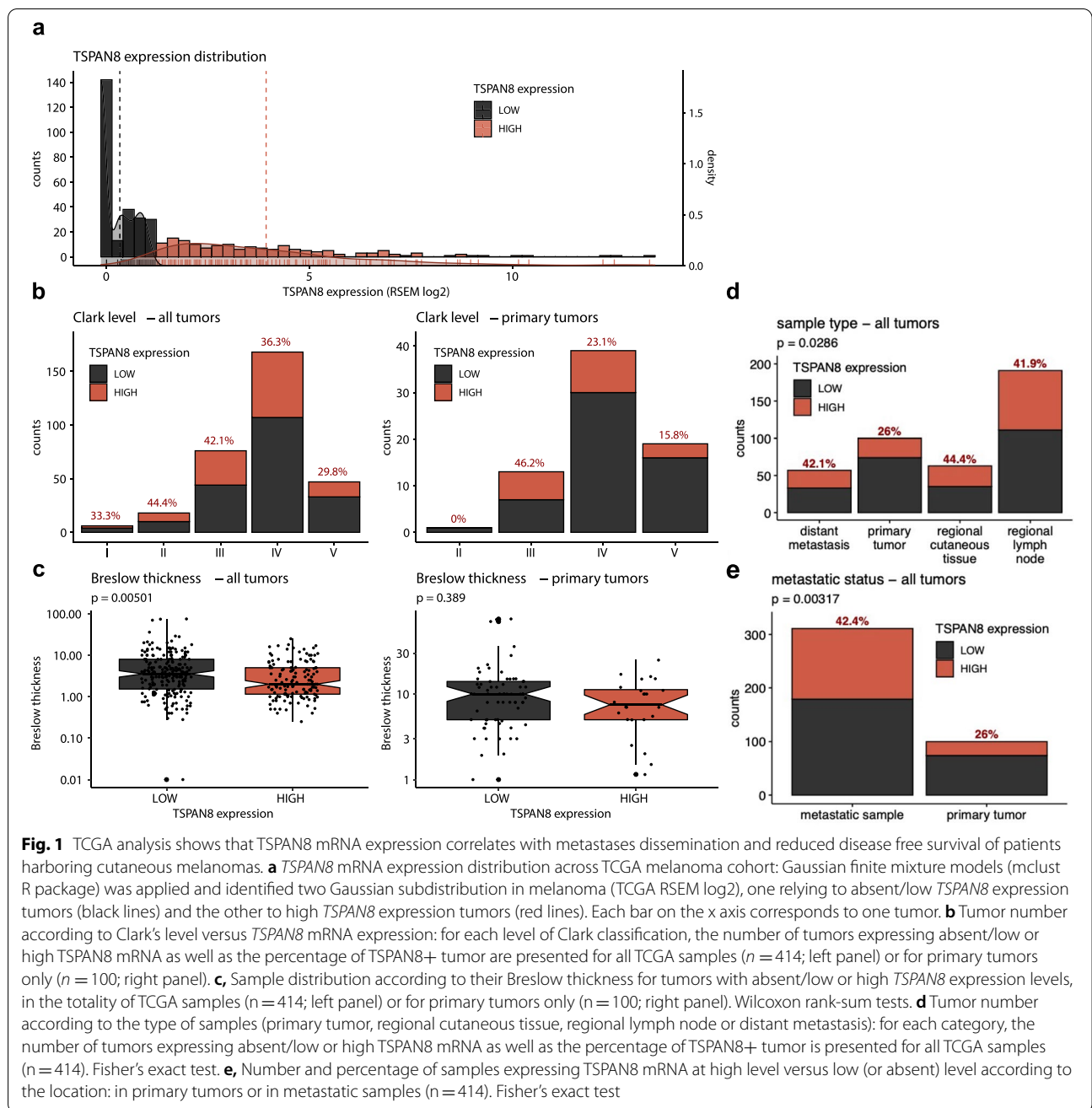


Fig. 1 TCGA analysis shows that TSPAN8 mRNA expression correlates with metastases dissemination and reduced disease free survival of patients harboring cutaneous melanomas. **a** TSPAN8 mRNA expression distribution across TCGA melanoma cohort: Gaussian finite mixture models (mclust R package) was applied and identified two Gaussian subdistribution in melanoma (TCGA RSEM log2), one relying to absent/low TSPAN8 expression tumors (black lines) and the other to high TSPAN8 expression tumors (red lines). Each bar on the x axis corresponds to one tumor. **b** Tumor number according to Clark's level versus TSPAN8 mRNA expression: for each level of Clark classification, the number of tumors expressing absent/low or high TSPAN8 mRNA as well as the percentage of TSPAN8+ tumor are presented for all TCGA samples (n = 414; left panel) or for primary tumors only (n = 100; right panel). **c**, Sample distribution according to their Breslow thickness for tumors with absent/low or high TSPAN8 expression levels, in the totality of TCGA samples (n = 414; left panel) or for primary tumors only (n = 100; right panel). Wilcoxon rank-sum tests. **d** Tumor number according to the type of samples (primary tumor, regional cutaneous tissue, regional lymph node or distant metastasis): for each category, the number of tumors expressing absent/low or high TSPAN8 mRNA as well as the percentage of TSPAN8+ tumor is presented for all TCGA samples (n = 414). Fisher's exact test. **e**, Number and percentage of samples expressing TSPAN8 mRNA at high level versus low (or absent) level according to the location: in primary tumors or in metastatic samples (n = 414). Fisher's exact test

cutaneous invasion have generally a better survival rate [15] but that some thin melanomas (<0.75 – 1 mm) could acquire some aggressive properties and lead to patient death. Indeed, metastases in sentinel lymph node were detected in more than 5% of patients who had a sentinel lymph node biopsy after the detection of a thin melanoma (< 1 mm) [16]. Our data showed that Tspan8 immunostaining could thus be a biomarker to assess the individual risk of metastasis, especially for

thin melanomas, and potentially linked with patient poor survival since Tspan8 expression seemed also correlated with the vital status of the patients. The proportion of Tspan8-expressing primary melanomas increased from 66.1% for alive patients to 82.9% for dead patients, 5 years after the diagnosis (Fig. 2e), and the 5-years overall survival curve (Fig. 2f) showed that the presence of Tspan8 protein in primary melanomas tended to represent an increase risk of death.

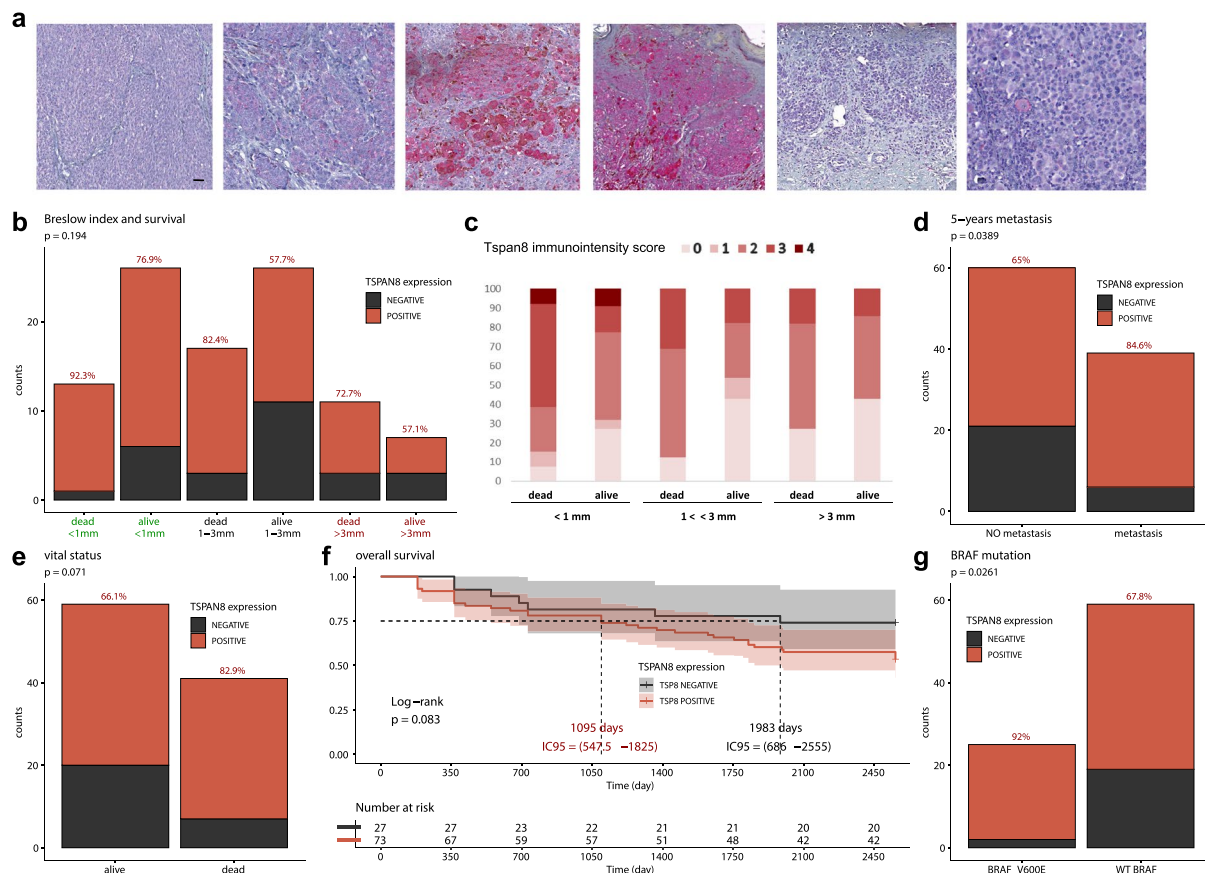


Fig. 2 Tspan8 protein expression can be immunoscored in primary melanomas and correlates with a higher propensity to give rise to distant metastases, an increased risk of death and the presence of a BRAF^{V600E} mutation. **a** Tspan8 expression detected by immunohistochemistry in different melanoma samples from immunoscore 1 to 4 (4 first pictures). **b**, Repartition of primary melanomas according to the Breslow Index (inferior to 1 mm, between 1 and 3 mm, superior to 3 mm), the patient status 5 years after diagnosis (dead or alive) and Tspan8 protein expression (positive or negative): for each category, the percentage of Tspan8+ tumors are presented (n = 100). Fisher’s exact test. **c** Tspan8 immunostaining classified in 5 different immunoscores from no Tspan8 staining (score 0) to strong Tspan8 staining (score 4), according to the Breslow Index (inferior to 1 mm, between 1 and 3 mm, superior to 3 mm) and the patient status 5 years after diagnosis (dead or alive; n = 100). **d** Tumor number according to metastasis presence versus Tspan8 protein expression: for patients developing or not metastases in the 5 years after diagnosis of their primary melanoma, the number of samples expressing or not Tspan8 protein as well as the percentage of Tspan8+ tumors are presented (n = 100). Fisher’s exact test. **e** Vital status of the patients according to Tspan8 protein expression: the number of samples expressing or not Tspan8 protein as well as the percentage of Tspan8+ tumors are presented (n = 100). Fisher’s exact test. **f** 5-years overall survival (n = 100). Log-rank test. **g** The repartition of tumors according to BRAF status and Tspan8 protein expression is presented. Fisher’s exact test

Tspan8 expression was correlated with the presence of a BRAF mutation in patient melanoma samples

In melanoma cell lines in vitro, we were not able to highlight a possible correlation between *TSPAN8* mRNA expression and the presence of a BRAF or a NRAS mutation (sup. Fig. 3a), that are the most frequent genetic alterations detected in melanoma [17]. In the TCGA cohort as well, no statistical difference could be observed, neither for BRAF nor NRAS mutation (sup. Fig. 3b,c), but in our cohort of primary melanomas sample, a systematic screening of BRAF^{V600E} mutation by immunohistochemistry (sup. Fig. 3d) revealed a significant correlation

between Tspan8 protein expression and the presence of the BRAF^{V600E} mutation (Fig. 2g). These data emphasize the functional interaction between Tspan8 and BRAF that we previously showed in vitro, suggesting that Tspan8 is a downstream effector of the RAF/MEK/ERK signaling pathway [3].

Conclusion

Overall, our findings suggest that Tspan8 protein detection could help the early identification of subgroups of patients bearing primary melanomas, preferentially BRAF-mutated, with high risk of developing

metastatic disease and could possibly discriminate thin melanomas with poor outcome. Although further investigations in a larger patient cohort are needed, these findings could have potential clinical relevance since Tspan8 protein expression can be used to define subgroups of thin melanoma patients who have a worse prognosis. Moreover, they should have important implications for proposed populations screening programs and patients' cure. Indeed, since one third (4/12) of patients with a thin melanoma that metastasized and led to the patient death have a Tspan8 staining associated with a *BRAF*^{V600E} mutation, an anti-BRAF/MEK therapeutic strategy could be proposed.

Abbreviations

BI: Breslow Index; CCLE: Cancer Cell Line Encyclopedia; CL: Clark Level; KIRREL: Kin of IRRE-like protein 1; PCR: Polymerase Chain Reaction; TCGA: The Cancer Genome Atlas; TSPAN8: Tetraspanin 8.

Supplementary Information

The online version contains supplementary material available at <https://doi.org/10.1186/s12943-021-01429-0>.

Additional file 1: Supplementary Figure 1. Tspan8 expression is detected in aggressive human melanoma cell lines. **Supplementary Figure 2.** Tspan8 expression analysis in TCGA cohort and a cohort of 100 human primary melanomas from archives of four French clinical centers. **Supplementary Figure 3.** TSPAN8 protein expression correlates with the presence of BRAFV600E mutation in primary melanomas. **Supplementary Methods.**

Acknowledgements

We thank Claude Boucheix for the gift of TS29 monoclonal antibody, and Nicolas Gadot and Julie Valantin at the anatomopathological platform of Cancer Research Center of Lyon for technical assistance.

Authors' contributions

O.B.-V., A.D.F., P.C., F.B., I.M. designed and conducted experiments; O.B.V. and I.M. wrote the paper; L.B.-B., R.M.P., A.D.F., M.G., N.L.-R., N.M., O.B.-V., I.M. conducted experiments and scientific discussion; R.M.P., A.D.F., P.C., J.C., S.D., J.-L. P., C. G.-M., N.M., S.M. provided patient materials and resources and scientific discussion. O.B.-V., R.M.P., A.D.F., J.C., C. G.-M., F.B., I.M. drafted the work or substantially revised it. All the authors read and approved the final manuscript.

Funding

We thank the French Institute Roche who supported this translational study.

Availability of data and materials

The dataset used during this study are available from TCGA. All other data generated or analyzed during this study are included in this published article or are available from the corresponding author on reasonable request.

Declarations

Ethics approval and consent to participate

This work has been carried out in accordance with The Code of Ethics of the World Medical Association (Declaration of Helsinki) for experiments involving human samples. The research program, including studies on archival and stored materials, was approved by the research ethics committee of the Center Léon Bérard, Lyon, France.

Consent for publication

Not applicable.

Competing interests

Conflict of interest disclosure statement: FB is a member of Institut Roche, an affiliate of Hoffman-La Roche that has funded this study. The other authors report no conflicts of interest in this work.

Author details

¹CNRS, UMR5534, Centre de Génétique et de Physiologie Moléculaires et Cellulaires, F-69622 Villeurbanne, France. ²Centre de Recherche en Cancérologie de Lyon, UMR Inserm 1052 CNRS 5286 Centre Leon Berard, Batiment Cheney D, 2eme etage, 28 rue Laennec, 69373 Cedex 08 Lyon, France. ³Département de Biopathologie, Centre Leon Bérard, Lyon, France. ⁴Department of Dermatology, University Hospital of St-Etienne, Saint-Etienne, France. ⁵Dermatology and Skin Cancer Department, Aix-Marseille University, 264, rue Saint-Pierre, 13385 Marseille, France. ⁶Department of Dermatology, University Hospital Estaing, Clermont Ferrand, France. ⁷Institut Roche, Boulogne-Billancourt, France.

Received: 17 August 2021 Accepted: 19 September 2021

Published online: 02 October 2021

References

- Ascierto PA, Marincola FM, Atkins MB. What's new in melanoma? Combination! *J Transl Med*. 2015;13:213. <https://doi.org/10.1186/s12967-015-0582-1>.
- Garbe C, Peris K, Hauschild A, Saiag P, Middleton M, Bastholt L, et al. Diagnosis and treatment of melanoma. European consensus-based interdisciplinary guideline - update 2016. *Eur J Cancer*. 2016;63:201–17. <https://doi.org/10.1016/j.ejca.2016.05.005>.
- Agaesse G, Barbolat-Boutrand L, Sulpice E, Bhajun R, El Kharbili M, Berthier-Vergnes O, et al. A large-scale RNAi screen identifies LCMR1 as a critical regulator of Tspan8-mediated melanoma invasion. *Oncogene*. 2017;36(4):446–57. <https://doi.org/10.1038/ncr.2016.219>.
- El Kharbili M, Agaesse G, Barbolat-Boutrand L, Pommier RM, de la Fouchardiere A, Larue L, et al. Tspan8-beta-catenin positive feedback loop promotes melanoma invasion. *Oncogene*. 2019;38(20):3781–93. <https://doi.org/10.1038/s41388-019-0691-z>.
- El Kharbili M, Cario M, Béchetolle N, Pain C, Boucheix C, Degoul F, et al. Tspan8 drives melanoma dermal invasion by promoting ProMMP-9 activation and basement membrane proteolysis in a keratinocyte-dependent manner. *Cancers (Basel)*. 2020;12(5):1297.
- Agaesse G, Barbolat-Boutrand L, El Kharbili M, Berthier-Vergnes O, Masse I. p53 targets TSPAN8 to prevent invasion in melanoma cells. *Oncogenesis*. 2017;6(4):e309. <https://doi.org/10.1038/oncsis.2017.11>.
- Rodia MT, Ugolini G, Mattei G, Montroni I, Zattoni D, Ghignone F, et al. Systematic large-scale meta-analysis identifies a panel of two mRNAs as blood biomarkers for colorectal cancer detection. *Oncotarget*. 2016;7(21):30295–306. <https://doi.org/10.18632/oncotarget.8108>.
- Gesierich S, Berezovskiy I, Ryschich E, Zoller M. Systemic induction of the angiogenesis switch by the tetraspanin D6.1A/CO-029. *Cancer Res*. 2006;66(14):7083–94. <https://doi.org/10.1158/0008-5472.CAN-06-0391>.
- Greco C, Bralet MP, Ailane N, Dubart-Kupperschmitt A, Rubinstein E, Le Naour F, et al. E-cadherin/p120-catenin and tetraspanin Co-029 cooperate for cell motility control in human colon carcinoma. *Cancer Res*. 2010;70(19):7674–83. <https://doi.org/10.1158/0008-5472.CAN-09-4482>.
- Ailane N, Greco C, Zhu Y, Sala-Valdes M, Billard M, Casal I, et al. Effect of an anti-human co-029/tspan8 mouse monoclonal antibody on tumor growth in a nude mouse model. *Front Physiol*. 2014;5:364. <https://doi.org/10.3389/fphys.2014.00364>.
- Park CS, Kim TK, Kim HG, Kim YJ, Jeoung MH, Lee WR, et al. Therapeutic targeting of tetraspanin8 in epithelial ovarian cancer invasion and metastasis. *Oncogene*. 2016;35(34):4540–8. <https://doi.org/10.1038/ncr.2015.520>.
- Maisonial-Besset A, Witkowski T, Navarro-Teulon I, Berthier-Vergnes O, Fois G, Zhu Y, et al. Tetraspanin 8 (TSPAN 8) as a potential target for radio-immunotherapy of colorectal cancer. *Oncotarget*. 2017;8(13):22034–47. <https://doi.org/10.18632/oncotarget.15787>.

13. Berthier-Vergnes O, El Kharbili M, de la Fouchardiere A, Pointecouteau T, Verrando P, Wierinckx A, et al. Gene expression profiles of human melanoma cells with different invasive potential reveal TSPAN8 as a novel mediator of invasion. *Br J Cancer*. 2011;104(1):155–65. <https://doi.org/10.1038/sj.bjc.6605994>.
14. Ohanna M, Cerezo M, Nottet N, Bille K, Didier R, Beranger G, et al. Pivotal role of NAMPT in the switch of melanoma cells toward an invasive and drug-resistant phenotype. *Genes Dev*. 2018;32(5–6):448–61. <https://doi.org/10.1101/gad.305854.117>.
15. Davis LE, Shalin SC, Tackett AJ. Current state of melanoma diagnosis and treatment. *Cancer Biol Ther*. 2019;20(11):1366–79. <https://doi.org/10.1080/15384047.2019.1640032>.
16. Han D, Zager JS, Shyr Y, Chen H, Berry LD, Iyengar S, et al. Clinicopathologic predictors of sentinel lymph node metastasis in thin melanoma. *J Clin Oncol*. 2013;31(35):4387–93. <https://doi.org/10.1200/JCO.2013.50.1114>.
17. Forbes SA, Beare D, Boutselakis H, Bamford S, Bindal N, Tate J, et al. COSMIC: somatic cancer genetics at high-resolution. *Nucleic Acids Res*. 2017;45(D1):D777–D83. <https://doi.org/10.1093/nar/gkw1121>.

Publisher's Note

Springer Nature remains neutral with regard to jurisdictional claims in published maps and institutional affiliations.

Ready to submit your research? Choose BMC and benefit from:

- fast, convenient online submission
- thorough peer review by experienced researchers in your field
- rapid publication on acceptance
- support for research data, including large and complex data types
- gold Open Access which fosters wider collaboration and increased citations
- maximum visibility for your research: over 100M website views per year

At BMC, research is always in progress.

Learn more biomedcentral.com/submissions

