



HAL
open science

First-order coherence of light emission from inhomogeneously broadened mesoscopic ensembles

Aymeric Delteil, V. Blondot, S. Buil, J.-P. Hermier

► **To cite this version:**

Aymeric Delteil, V. Blondot, S. Buil, J.-P. Hermier. First-order coherence of light emission from inhomogeneously broadened mesoscopic ensembles. *Physical Review B*, 2022, 106 (11), pp.115302. 10.1103/PhysRevB.106.115302 . hal-03768200

HAL Id: hal-03768200


<https://hal.science/hal-03768200v1>

Submitted on 2 Sep 2022

HAL is a multi-disciplinary open access archive for the deposit and dissemination of scientific research documents, whether they are published or not. The documents may come from teaching and research institutions in France or abroad, or from public or private research centers.

L'archive ouverte pluridisciplinaire **HAL**, est destinée au dépôt et à la diffusion de documents scientifiques de niveau recherche, publiés ou non, émanant des établissements d'enseignement et de recherche français ou étrangers, des laboratoires publics ou privés.

First-order coherence of light emission from inhomogeneously broadened mesoscopic ensembles

A. Delteil ^{*}, V. Blondot, S. Buil, and J.-P. Hermier

Université Paris-Saclay, UVSQ, CNRS, GEMaC, 78000, Versailles, France



(Received 8 July 2022; revised 22 August 2022; accepted 23 August 2022; published 2 September 2022)

Inhomogeneous broadening is well known to hinder individual characteristics of emitters, supplanting the single-particle properties by their broader probability distribution. Here, we present an analysis of the emission spectra of mesoscopic ensembles of inhomogeneously distributed emitters below the thermodynamic limit (10^1 - 10^4 emitters). Based on a simple analytical model and an extensive numerical analysis, we show that the number and individual linewidths of the emitters can be directly estimated from the ensemble autocorrelation function in spite of an inhomogeneously broadened emission. As an application, we analyze the photoluminescence of colloidal nanocrystal aggregates embedded in a gold shell. Our general method can be applied to a wide range of mesoscopic many-body systems and could provide new insights into their first-order coherence properties.

DOI: [10.1103/PhysRevB.106.115302](https://doi.org/10.1103/PhysRevB.106.115302)

I. INTRODUCTION

Spectroscopy of emitter ensembles distinguishes between two main regimes, depending on the way the environment affects the individual components. In the homogeneous broadening regime, the spectral shape of the ensemble emission is identical to the single-particle spectrum. The field autocorrelation function then decays as the inverse of the individual linewidth δE . On the other hand, in the inhomogeneously distributed regime, the spectral shape is solely given by the probability distribution of the center frequencies. This is typically the case for Doppler-broadened atomic gases [1], ensembles of size-distributed semiconductor quantum dots [2,3], color centers with varying mechanical or electromagnetic environments [4,5], excitons in quantum wells [6], spin-dephased Raman transitions [7,8], and so on. In such cases, the autocorrelation function is therefore given by the ensemble linewidth and rapidly decays as its inverse T_2^* [8,9]. In some cases, techniques such as spectral hole burning [10] or dynamical decoupling [11,12] can provide access to the underlying homogeneous dephasing time.

Here, we investigate mesoscopic ensembles of emitters that are inhomogeneously distributed, yet are insufficiently numerous to lead to a fully inhomogeneously dephased autocorrelation function. We show analytically and numerically that, in contrast to the thermodynamic limit where the coherence is fully lost in a typical time $T_2^* \sim \hbar/\Delta E_{\text{inh}}$, in the case of mesoscopic ensembles the loss is only partial and some information can be retrieved from the self-normalized first-order autocorrelation function. The reminiscent exponential tail indeed retains information on both the number and intrinsic linewidth of the individual emitters that compose the ensemble. Using numerical simulations, we propose a simple method to experimentally access these quantities. We emphasize that there is no need for prerequisite information

about the number of individual emitters, their intensity, their individual properties, or their inhomogeneous distribution.

As an illustration, we then apply our method to experimental data from mesoscopic ($N \sim 10^1$ - 10^4) ensembles of nanocrystals (NCs) of inhomogeneous linewidth ~ 40 meV, exceeding by about one order of magnitude the individual linewidths, to infer an estimation of the individual emitter properties. We compare our results to geometrical estimations of the NC population of 22 NC aggregates of varying sizes as well as to the emission brightness. This analysis allows us to deduce the fraction of photoactive emitters. Finally, we implement a stochastic optimization algorithm to show that the emission spectra are well reproduced using the extracted parameters.

II. MODEL AND SIMULATIONS

A. Framework and model

For the sake of simplicity, we consider ensembles of N individual emitters of identical Lorentzian emission spectrum (at the exception of their center emission wavelength), and we term their individual coherence time T_2 —even though part of the individual linewidth could contain time-averaged broadening such as spectral diffusion. We denote $E_i = E_0 + \Delta E_i$ ($i = 1, \dots, N$) their center energies, with E_0 the center energy of the ensemble and ΔE_i the individual deviations from E_0 . ΔE_i are therefore random variables that are identically distributed according to the thermodynamic limit inhomogeneous spectrum of typical width \hbar/T_2^* . The N -particle power spectrum reads

$$S(E) \propto \sum_{i=1}^N \mathcal{L}(E - E_i) = \sum_{i=1}^N \mathcal{L}(E) * \delta(E - E_i), \quad (1)$$

where $\mathcal{L}(E) = \frac{1}{(\hbar/T_2)^2 + (E - E_0)^2}$ is the Lorentzian distribution. The first-order autocorrelation function $g^{(1)}(\tau)$ can be

^{*}aymeric.delteil@uvsq.fr

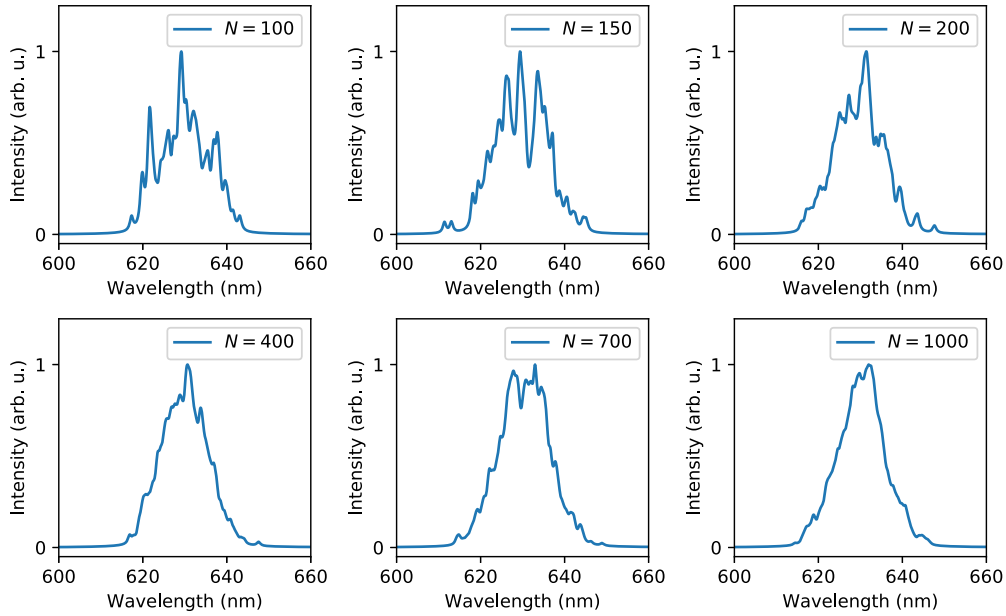


FIG. 1. Six examples of simulated spectra with the number of emitters varying from $N = 100$ to $N = 1000$.

obtained by Fourier transform of the power spectrum

$$g^{(1)}(\tau) = C e^{-\frac{|\tau|}{T_2}} e^{i\frac{E_0}{\hbar}\tau} \sum_{i=1}^N e^{i\frac{\Delta E_i}{\hbar}\tau},$$

where C is a normalization constant. Let us focus on its modulus $|g^{(1)}(\tau)| = C e^{-\frac{|\tau|}{T_2}} M_N$, where we introduce the random variable $M_N = |\sum_{i=1}^N e^{i\frac{\Delta E_i}{\hbar}\tau}|$. We consider two opposite limits: when $\tau = 0$, we simply obtain $|g^{(1)}(\tau)| = CN$ owing to the vanishing phase argument in M_N . On the other hand, when $\tau \gg T_2^*$, the standard deviation of the random variable $X = \frac{\Delta E_i}{\hbar}\tau$ is much greater than 1 and therefore, thanks to the 2π periodicity of the complex exponential, X can be approximated by a uniformly distributed variable on the $[0, 2\pi)$ interval. The calculation of M_N is then analogous to a two-dimensional random walk in the complex plane with fixed step size but random direction, and was treated by Rayleigh in 1880 [13]. It can be easily derived using the central limit theorem and its probability distribution function when $N \gg 1$

is a Rayleigh distribution $P(x) = 2x/N \times e^{-x^2/N}$ with expectation value $E[M_N] = \sqrt{N\pi}/2$. This leads us to the following expression for the expectation value of the self-normalized first-order correlation function:

$$E \left[\left| \frac{g^{(1)}(\tau)}{g^{(1)}(0)} \right| \right] = \frac{\sqrt{\pi} \exp\left(-\frac{|\tau|}{T_2}\right)}{2\sqrt{N}}. \quad (2)$$

This result shows that the first-order autocorrelation function contains information about the individuals (namely N and T_2) in its long-time tail. Interestingly, Eq. (2) is independent of the distribution function of the emitters center energies. However, this information is contained in the intermediate timescales $0 < \tau \lesssim T_2^*$ where the autocorrelation quickly converges towards the Fourier transform of the emitter spectral distribution. In addition, it is noteworthy that Eq. (2) does not involve any additional normalization or calibration procedure based for instance on the intensity of the emitters

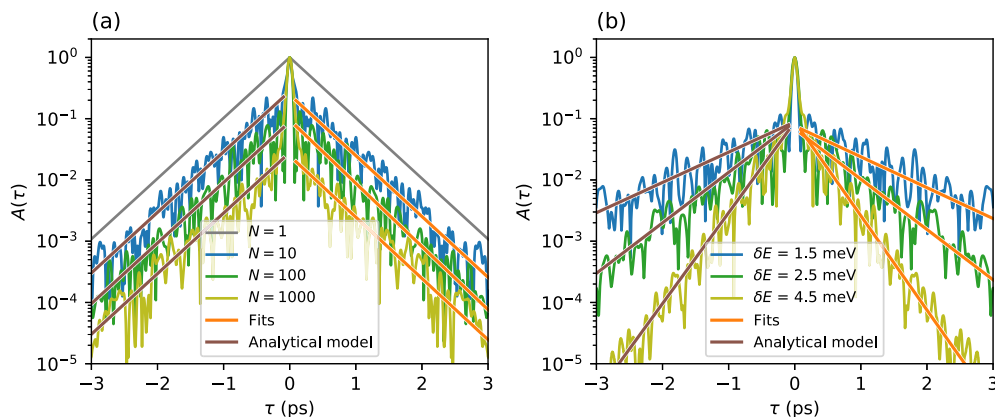


FIG. 2. (a) Autocorrelation of ensembles with varying size. (b) Autocorrelation of ensembles with varying individual linewidths. The orange lines are fits to the data for $\tau > T_2^*$ and the brown lines are calculated with Eq. (2).

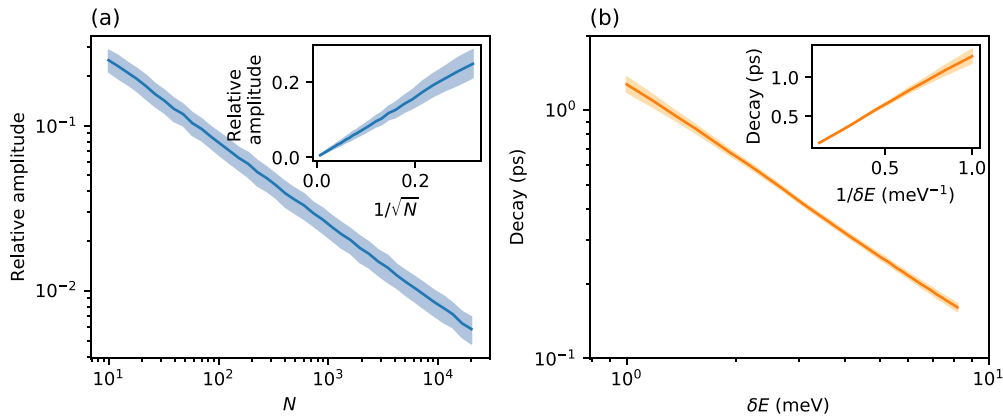


FIG. 3. Fitting parameters extracted from $\sim 3 \times 10^4$ numerically generated datasets. (a) Relative amplitude, plotted as a function of N , in log-log scale. Inset: Same data, plotted in linear scale as a function of \sqrt{N} . (b) Decay time, plotted as a function of δE , in log-log scale. Inset: Same data, plotted in linear scale as a function of $1/\delta E$. The error bars represent the standard deviation of the extracted parameters.

since the autocorrelation is simply normalized by its value at zero delay.

In practice, in a given physical system, N and ΔE_i are fixed. Therefore, it is not possible to repeat a random draw to estimate the expectation value of Eq. (2). However, in the next section we will show that a fitting procedure of the autocorrelation can yield the desired estimation since, when τ increases, the phase argument in the exponential terms of M_N continuously varies, thereby randomly probing the whole support of X .

B. Numerical simulations

We generate example spectra of varying emitter numbers based on Eq. (1). With no loss of generality, we choose parameters that are close to those of the emitters experimentally studied in Sec. III: $E_0 = 1.96$ eV, $\Delta E_{\text{inh}} = 40$ meV. We use a

Gaussian distribution of the center energies ΔE_i [14,15]. Figure 1 displays six examples with N varying between 100 and 1000. Fluctuations of the spectrum envelope can be observed, with randomly varying widths and amplitudes—preventing to directly extract individual properties with a fitting procedure. In the following, we show that a fit of the autocorrelation function allows to access characteristics of the individual spectra.

We use fast Fourier transform (FFT) to calculate the autocorrelation functions from the spectra. Figure 2 shows typical examples of $A(\tau) = |g^{(1)}(\tau)/g^{(1)}(0)|$ calculated from ensembles of various N and δE . Around $\tau = 0$, $A(\tau)$ exhibits a Gaussian shape of width $\sim 1/\Delta E_{\text{inh}}$ that originates from the inhomogeneous distribution, and that is identical for all the ensembles, independently of N and δE . At longer τ , a fluctuating exponential tail is observed. Its amplitude depends on N [Fig. 2(a)] and its decay time depends on T_2 [Fig. 2(b)]. As plotted in orange solid lines on Figs. 2(a) and 2(b), these

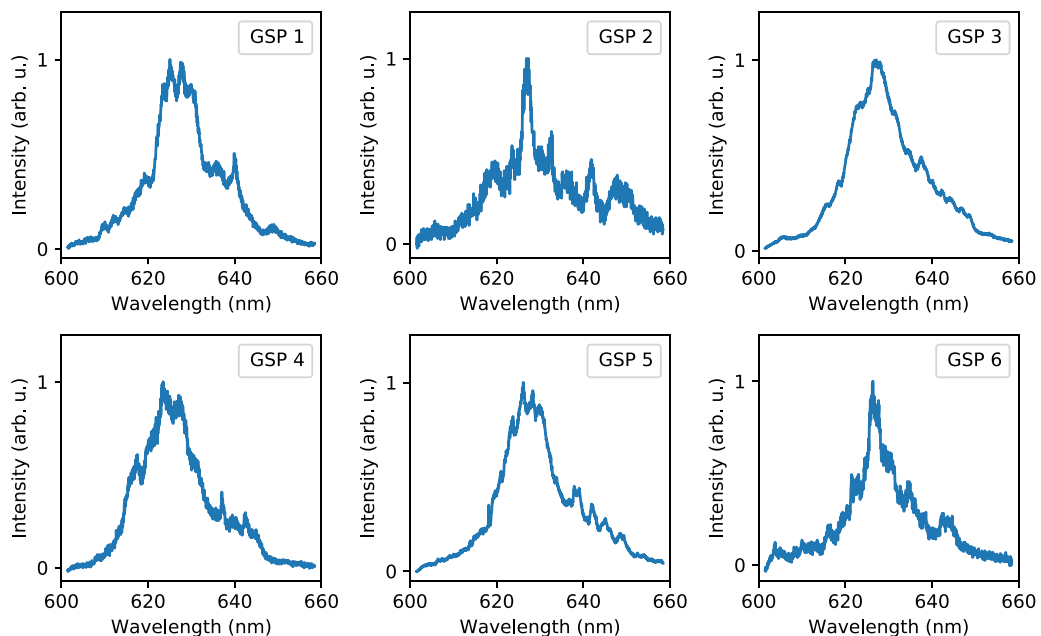


FIG. 4. Six typical photoluminescence spectra of individual GSPs of various sizes.

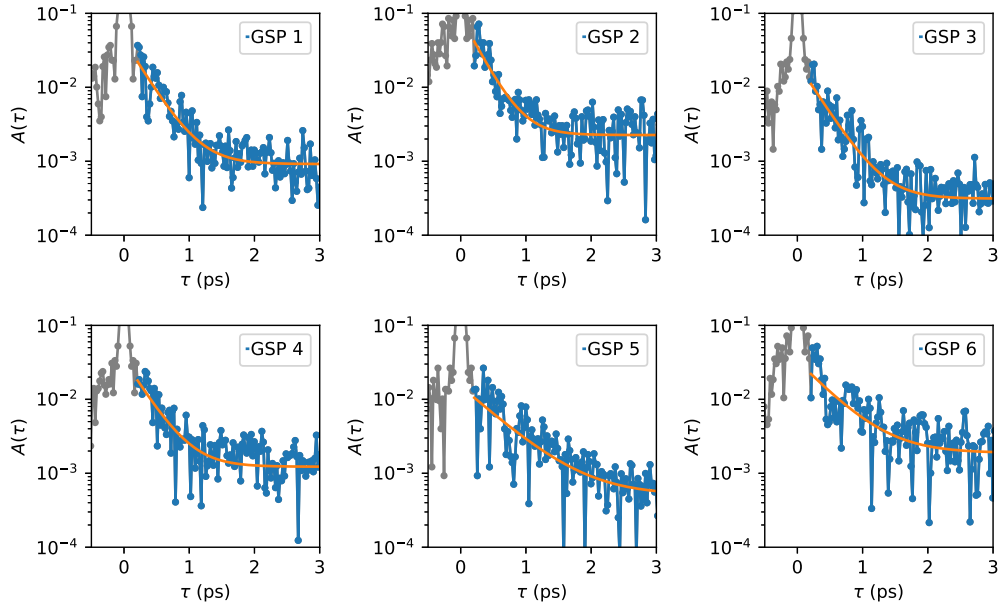


FIG. 5. Zoom-in of the autocorrelation function (blue curves) and fit results (orange curve) for the same emitters as in Fig. 4. The gray curves represent the parts of the data that are not fitted.

tails are well fitted by exponential functions $Ae^{-\tau/\tau_0}$ using log-linear fitting. The least mean-square fitting procedure ensures that the fluctuations are averaged out if the fitting interval is longer than the typical timescale of the fluctuations (which is of order T_2^*), such that the fitting parameters constitute estimators of N and T_2 . The theoretical curves calculated using Eq. (2) are plotted on the same graphs (brown curves), showing the excellent agreement between the theoretical expectation value and the fit results.

We repeat this fitting procedure on a large number of numerically generated signals, with N varying between 10 and 10^4 , and δE varying between 1 and 10 meV. The fitting results are shown on Fig. 3. The extracted parameters follow the expected dependencies, with moderate uncertainty ($\Delta A/A \approx 15\%$ for the amplitude and $\Delta \tau_0/\tau_0 \approx 10\%$ for the decay time), showing that our method allows to extract N and T_2 from the first-order autocorrelation function calculated from the emission spectrum.

In the next section, we illustrate an implementation of our method on an experimental dataset.

III. EXPERIMENTAL DATA

In this section, we focus on the luminescence spectra of mesoscopic aggregates of CdSe/CdS/CdZnS NCs [16] embedded within a silica and a gold shells, termed golden supraparticles (GSPs). The synthesis of these emitters is detailed in [17]. The gold shell enhances the light emission through the Purcell effect, thus ensuring that the role of Förster resonant energy transfer can be neglected [16,17]. The GSPs considered in this section comprise between 10^2 and 10^4 NCs. Their photoluminescence spectra were measured in a confocal microscope at 4 K under nonresonant laser excitation. Figure 4 shows six representative spectra from GSPs of various sizes. As with the simulated spectra of Fig. 1, the envelopes exhibit shape irregularities that originate

from the random center wavelength of a finite number of emitters. The overall distribution is not completely Gaussian but slightly bimodal, with a main subpopulation centered around 630 nm, and a secondary redder subpopulation centered around 640 nm. As we evidenced in Sec. II, this has no impact on the analysis, which is independent of the lineshape of the inhomogeneous distribution.

In the same way as in Sec. II, we calculate the autocorrelation using FFT. The results are shown on Fig. 5 (blue curves) for the six spectra from Fig. 4. The autocorrelation functions exhibit a long-time tail that can be well fitted by an exponential function with a constant offset using log-linear least mean square optimization (orange curves in Fig. 5).

We applied the same procedure to 22 GSPs. Figure 6 shows the results of the estimation of N and δE on these emitters. The error bars are slightly higher than those shown in Fig. 3 due to the shorter time range on which the exponential

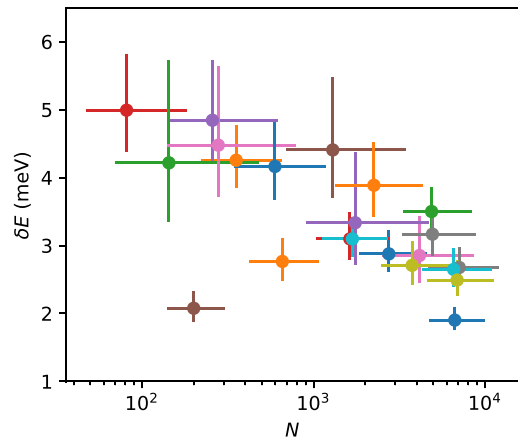


FIG. 6. N and δE as deduced from the autocorrelation fit for the 22 GSPs. The error bars are calculated from the uncertainties on the fitting parameters.

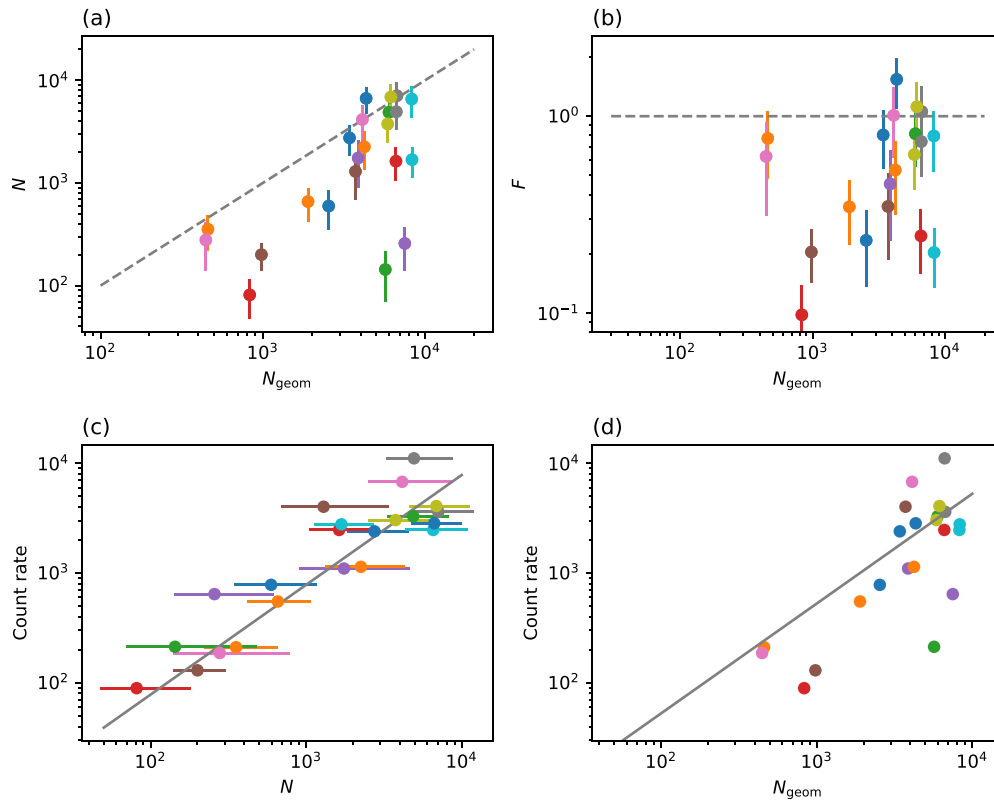


FIG. 7. (a) Estimated number N plotted against the geometrically estimated number N_{geom} . (b) Fraction of optically active NCs plotted against N_{geom} . (c) Count rate as a function of N . (d) Count rate as a function of N_{geom} .

tail is fitted. Concerning δE , we obtain values in the 2 to 5 meV range, in agreement with previous studies on individual NCs at low temperature [18,19]. These values also consistently match the narrowest features observed on the spectra. Concerning N , to gain more insight, we now compare our conclusions to the number N_{geom} estimated from the measured volume of the GSPs.

To estimate the number of NCs in the GSPs, we measured the diameters of the 22 GSPs using a scanning electron microscope (SEM) and an atomic force microscope (AFM). Knowing the center-to-center distance of individual NCs (8.5 nm), the number of NCs in a GSP can be calculated by assuming a compact random packing of the NCs [20]. Figure 7(a) shows a comparison of N and N_{geom} . While these two numbers are sizably different for some GSPs, we note that we always obtain $N \lesssim N_{\text{geom}}$. This observation shows that some GSPs contain a large fraction of optically inactive NCs, which could be due to either damage during the synthesis or to photobleaching of part of the NC population of these GSPs. The fraction $F = N/N_{\text{geom}}$ of optically active NCs is plotted in Fig. 7(b) as a function of N_{geom} . To further confirm that the observed discrepancy between N and N_{geom} is due to optically inactive NCs, we plot the count rate measured at a fixed laser power as a function of N [Fig. 7(c)] and of N_{geom} [Fig. 7(d)], together with a linear fit. The count rate exhibits a higher correlation with N than N_{geom} , with a twice higher covariance, thus providing further evidence of our assumption.

To provide additional evidence of the relevance of the extracted parameters, we implemented a fitting algorithm where N and δE are fixed, given by the values extracted

from the autocorrelation function, while the individual center wavelengths constitute the parameter vector to optimize. This algorithm is based on simulated annealing, a variant of random wall climbing where the parameter vector to optimize is allowed to scatter backwards, with a probability that decreases as a function of a decreasing parameter T . The results of this optimization are shown in Fig. 8. The excellent agreement between simulated and experimental spectra indicates that the spectra can be perfectly reproduced using the parameters extracted from our autocorrelation analysis. We note that, although the number of free parameters is large (the center frequencies of all the emitters), a good agreement cannot be obtained if N or δE are not well chosen.

IV. CONCLUSION

We analyzed spectral properties of mesoscopic ensembles in a regime that lies halfway between homogeneous (T_2 -limited) and ensemble-averaged (T_2^* -limited) regimes. In this mesoscopic regime, the spectral distribution is inhomogeneously broadened, yet retains information about individual components. This information can be retrieved from the self-normalized first-order correlation obtained from the emission spectrum by Fourier transform, as pointed out by our simple analytical model. We performed a numerical analysis showing that an exponential fitting of the long-time components of the self-normalized autocorrelation allows to reliably access the number and individual linewidths of the constituents. We applied this method to experimental data from colloidal

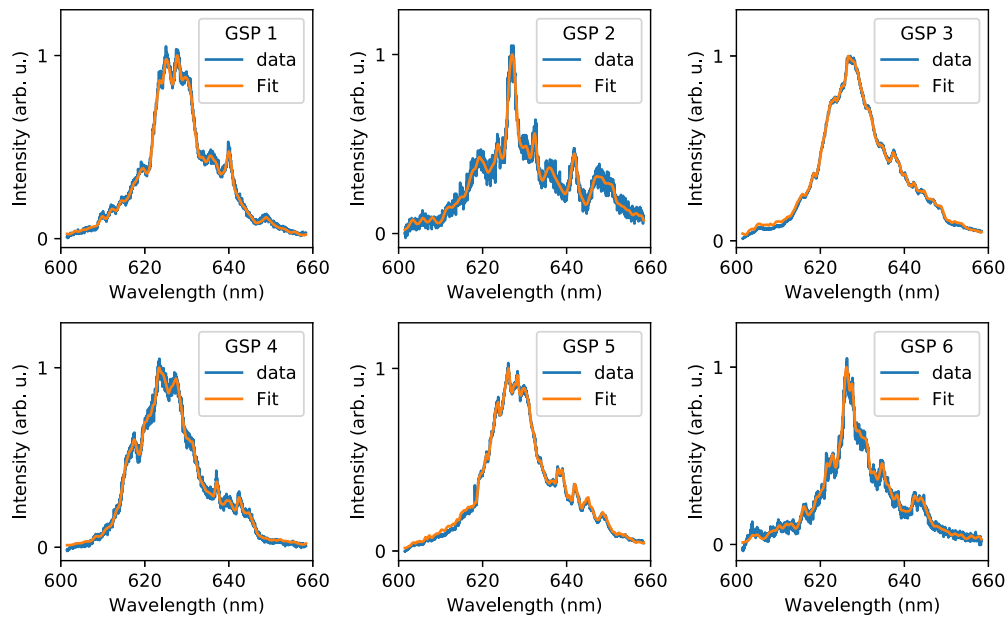


FIG. 8. Blue curves: Spectra from Fig. 4. Orange curves: Simulated annealing optimized spectra.

II-VI NC aggregates, allowing to estimate the number and linewidths of the optically active NCs. The extracted parameters provide a better agreement with the count rate and optical spectra than simple counting from geometrical parameters. Our method is very general and could be applied to a wide range of mesoscopic systems, for which it could constitute a useful characterization tool. We therefore expect our work to shine a new light on the coherence properties of composite physical systems in the intermediate dephasing regime.

The data generated in this study are available [21].

ACKNOWLEDGMENTS

The authors thank J.-J. Greffet and C. Arnold for fruitful discussions. The authors also acknowledge A. Bogicevic, T. Pons, and N. Lequeux for GSP synthesis. This work is supported by the French Agence Nationale de la Recherche (ANR), under grant ANR-17-CE24-0046 (project GYN).

-
- [1] C. K. N. Patel, Determination of atomic temperature and doppler broadening in a gaseous discharge with population inversion, *Phys. Rev.* **131**, 1582 (1963).
- [2] D. Gammon, E. S. Snow, B. V. Shanabrook, D. S. Katzer, and D. Park, Fine Structure Splitting in the Optical Spectra of Single GaAs Quantum Dots, *Phys. Rev. Lett.* **76**, 3005 (1996).
- [3] S. A. Empedocles, R. Neuhauser, K. Shimizu, and M. G. Bawendi, Photoluminescence from single semiconductor nanostructures, *Adv. Mater.* **11**, 1243 (1999).
- [4] Y. Rosenzweig, Y. Schlüssel, and R. Folman, Probing the origins of inhomogeneous broadening in nitrogen-vacancy centers with Doppler-free-type spectroscopy, *Phys. Rev. B* **98**, 014112 (2018).
- [5] S. Lindner, A. Bommer, A. Muzha, A. Krueger, L. Gines, S. Manda, O. Williams, E. Londero, A. Gali, and C. Becher, Strongly inhomogeneous distribution of spectral properties of silicon-vacancy color centers in nanodiamonds, *New J. Phys.* **20**, 115002 (2018).
- [6] R. Houdré, R. P. Stanley, and M. Ilegems, Vacuum-field Rabi splitting in the presence of inhomogeneous broadening: Resolution of a homogeneous linewidth in an inhomogeneously broadened system, *Phys. Rev. A* **53**, 2711 (1996).
- [7] P. R. Hemmer, A. V. Turukhin, M. S. Shahriar, and J. A. Musser, Raman-excited spin coherences in nitrogen-vacancy color centers in diamond, *Opt. Lett.* **26**, 361 (2001).
- [8] Z. Sun, A. Delteil, S. Faelt, and A. Imamoglu, Measurement of spin coherence using Raman scattering, *Phys. Rev. B* **93**, 241302(R) (2016).
- [9] O. Chen *et al.*, Compact high-quality CdSe–CdS core–shell nanocrystals with narrow emission linewidths and suppressed blinking, *Nat. Mater.* **12**, 445 (2013).
- [10] P. Palinginis, S. Tavenner, M. Lonergan, and H. Wang, Spectral hole burning and zero phonon linewidth in semiconductor nanocrystals, *Phys. Rev. B* **67**, 201307(R) (2003).
- [11] I. D. Abella, N. A. Kurnit, and S. R. Hartmann, Photon echoes, *Phys. Rev.* **141**, 391 (1966).
- [12] D. Press, K. De Greve, P. L. McMahon, T. D. Ladd, B. Friess, C. Schneider, M. Kamp, S. Höfling, A. Forchel, and Y. Yamamoto, Ultrafast optical spin echo in a single quantum dot, *Nat. Photonics* **4**, 367 (2010).
- [13] L. Rayleigh, On the resultant of a large number of vibrations of the same pitch and of arbitrary phase, *The London, Edinburgh, and Dublin Philosophical Magazine and Journal of Science* **10**, 73 (1880).

- [14] C. R. Kagan, C. B. Murray, and M. G. Bawendi, Long-range resonance transfer of electronic excitations in close-packed CdSe quantum-dot solids, *Phys. Rev. B* **54**, 8633 (1996).
- [15] T. J. Liptay, L. F. Marshall, P. S. Rao, R. J. Ram, and M. G. Bawendi, Anomalous Stokes shift in CdSe nanocrystals, *Phys. Rev. B* **76**, 155314 (2007).
- [16] V. Blondot, A. Bogicevic, A. Coste1, C. Arnold, S. Buil, X. Quélin, T. Pons, N. Lequeux, and J.-P. Hermier, Fluorescence properties of self assembled colloidal supraparticles from CdSe/CdS/ZnS nanocrystals, *New J. Phys.* **22**, 113026 (2020).
- [17] V. Blondot, C. Arnold, A. Delteil, A. Bogicevic, T. Pons, N. Lequeux, D. Gérard, S. Buil, and J.-P. Hermier, Fluorescence decay enhancement and FRET inhibition in self-assembled hybrid gold CdSe/CdS/CdZnS colloidal nanocrystals supraparticles, [arXiv:2207.03135](https://arxiv.org/abs/2207.03135).
- [18] S. A. Empedocles and M. G. Bawendi, Influence of spectral diffusion on the line shapes of single CdSe nanocrystallite quantum dots, *J. Phys. Chem. B* **103**, 1826 (1999).
- [19] L. Coolen, X. Brokmann, P. Spinicelli, and J.-P. Hermier, Emission Characterization of a Single CdSe-ZnS Nanocrystal with High Temporal and Spectral Resolution by Photon-Correlation Fourier Spectroscopy, *Phys. Rev. Lett.* **100**, 027403 (2008).
- [20] A. Zaccone, Explicit Analytical Solution for Random Close Packing in $d = 2$ and $d = 3$, *Phys. Rev. Lett.* **128**, 028002 (2022).
- [21] <https://doi.org/10.5281/zenodo.7034845>.