



**HAL**  
open science

## Automatic cell identification and analysis on in vivo reflectance confocal images of the human epidermis (Poster)

Imane Lboukili, Xavier Descombes, Georgios N Stamatias

► **To cite this version:**

Imane Lboukili, Xavier Descombes, Georgios N Stamatias. Automatic cell identification and analysis on in vivo reflectance confocal images of the human epidermis (Poster). SPIE Photonics Europe : Conférence Internationale et Exposition sur les Applications de la Technologie Photonique, Apr 2022, Strasbourg, France. hal-03760775

**HAL Id: hal-03760775**

**<https://hal.science/hal-03760775>**

Submitted on 25 Aug 2022

**HAL** is a multi-disciplinary open access archive for the deposit and dissemination of scientific research documents, whether they are published or not. The documents may come from teaching and research institutions in France or abroad, or from public or private research centers.

L'archive ouverte pluridisciplinaire **HAL**, est destinée au dépôt et à la diffusion de documents scientifiques de niveau recherche, publiés ou non, émanant des établissements d'enseignement et de recherche français ou étrangers, des laboratoires publics ou privés.

## INTRODUCTION

Reflectance Confocal Microscopy<sup>1,2</sup> (RCM) is a real-time non-invasive *in vivo* technology that allows the visualization of the skin epidermis and upper layers of the dermis at cellular level. It provides information on the geometrical and topological properties of the skin, which play important roles in the makeup of the skin barrier.

In most cases, analysis of RCM stacks is done manually, providing qualitative observations. However, manual analysis is time-consuming and subject to human interpretation and inter-expert differences. Thus, we could benefit from automated methods to quantitatively analyze RCM images.

Our approach focuses on RCM images of the *stratum granulosum* (SG) and *stratum spinosum* (SS) where viable cells, called keratinocytes, appear in a honeycomb pattern. Granular cells are typically larger than spinous cells and thus have a higher density<sup>3</sup>. They are both characterized by a dark center and a grainy cytoplasm due to micro-structures, surrounded by bright grainy membranes.

Attempts at the automated identification of epidermal cells on RCM images have been made<sup>4,5</sup>. Unfortunately, the amount of noise and heterogeneity of RCM images hinders the development of accurate segmentation methods.

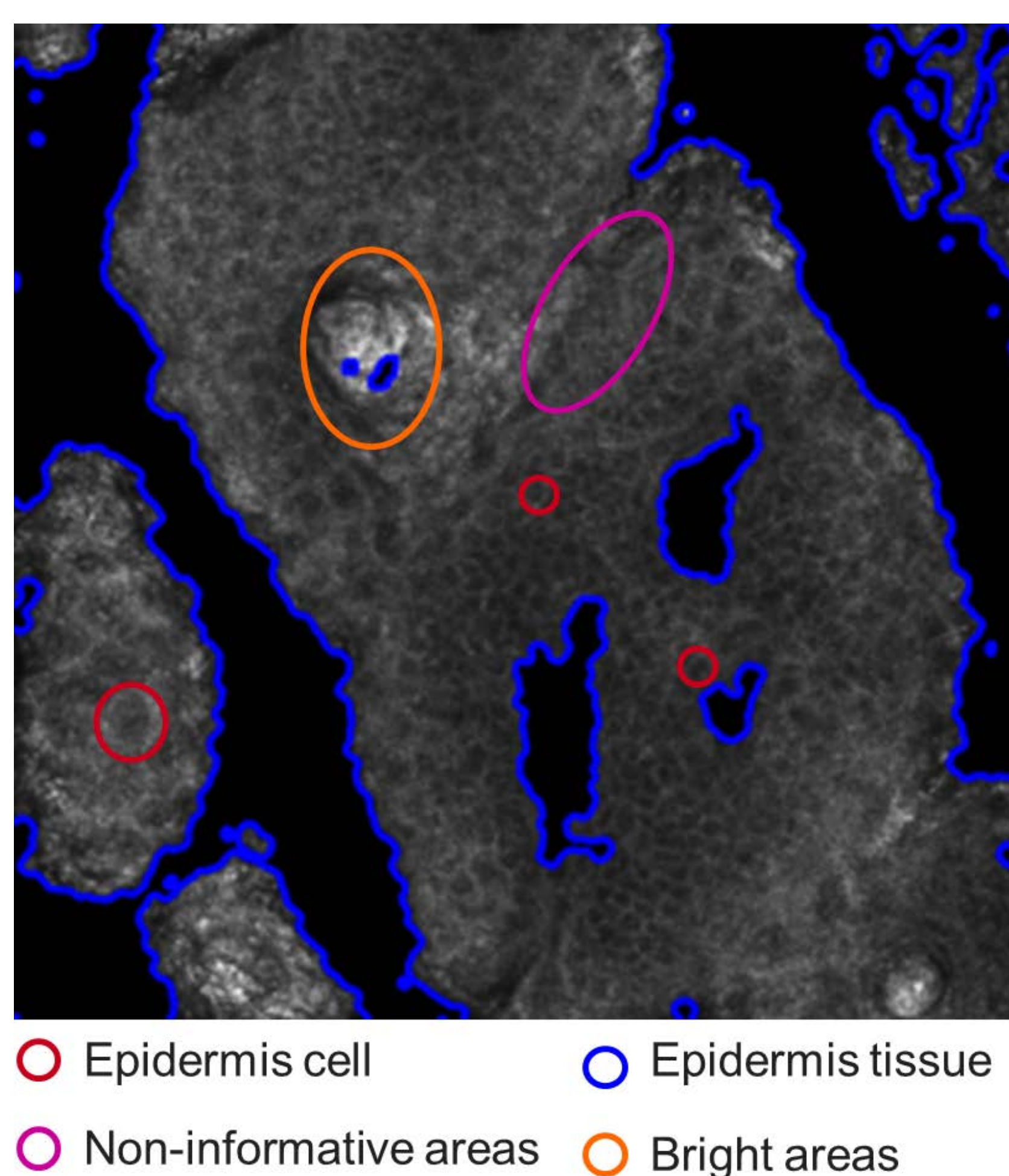


Fig. 1 RCM image of the *stratum spinosum* of light-pigmented skin. In blue, the border between tissue and background. In pink, non-informative areas. In orange, bright spots. And in red, epidermal cells.

**We propose a method to automatically detect keratinocytes centers on RCM images of the *stratum granulosum* and *stratum spinosum*.**

## IMAGE ANALYSIS WORKFLOW

RCM images tend to be noisy and non-uniform, which hinders the development of automated segmentation methods. To guide our cell detection, we started by identifying the region of interest (ROI), *i.e.*, the regions containing epidermal cells.

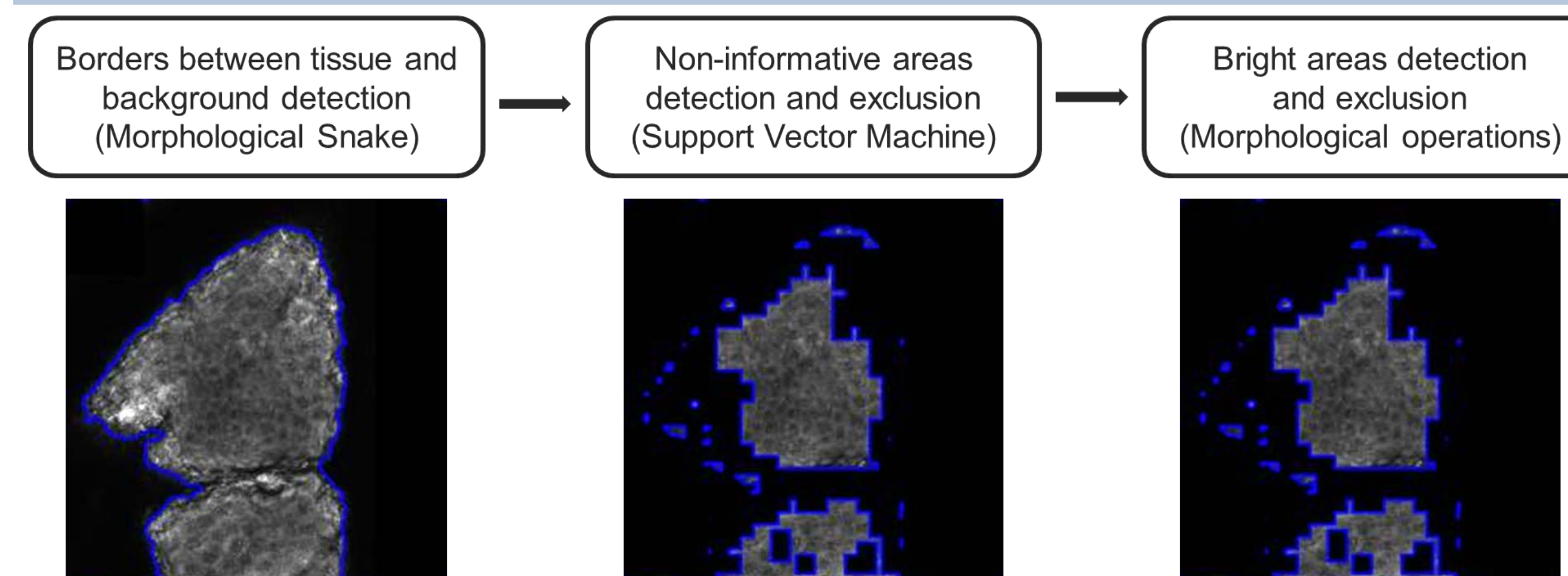


Fig.2 Steps of the identification of the region of interest. In blue the region of interest mask.

After obtaining the region of interest, the individual cells were identified on the ROI by applying a Sato tubeness filter followed by a Gabor filter on the processed image.

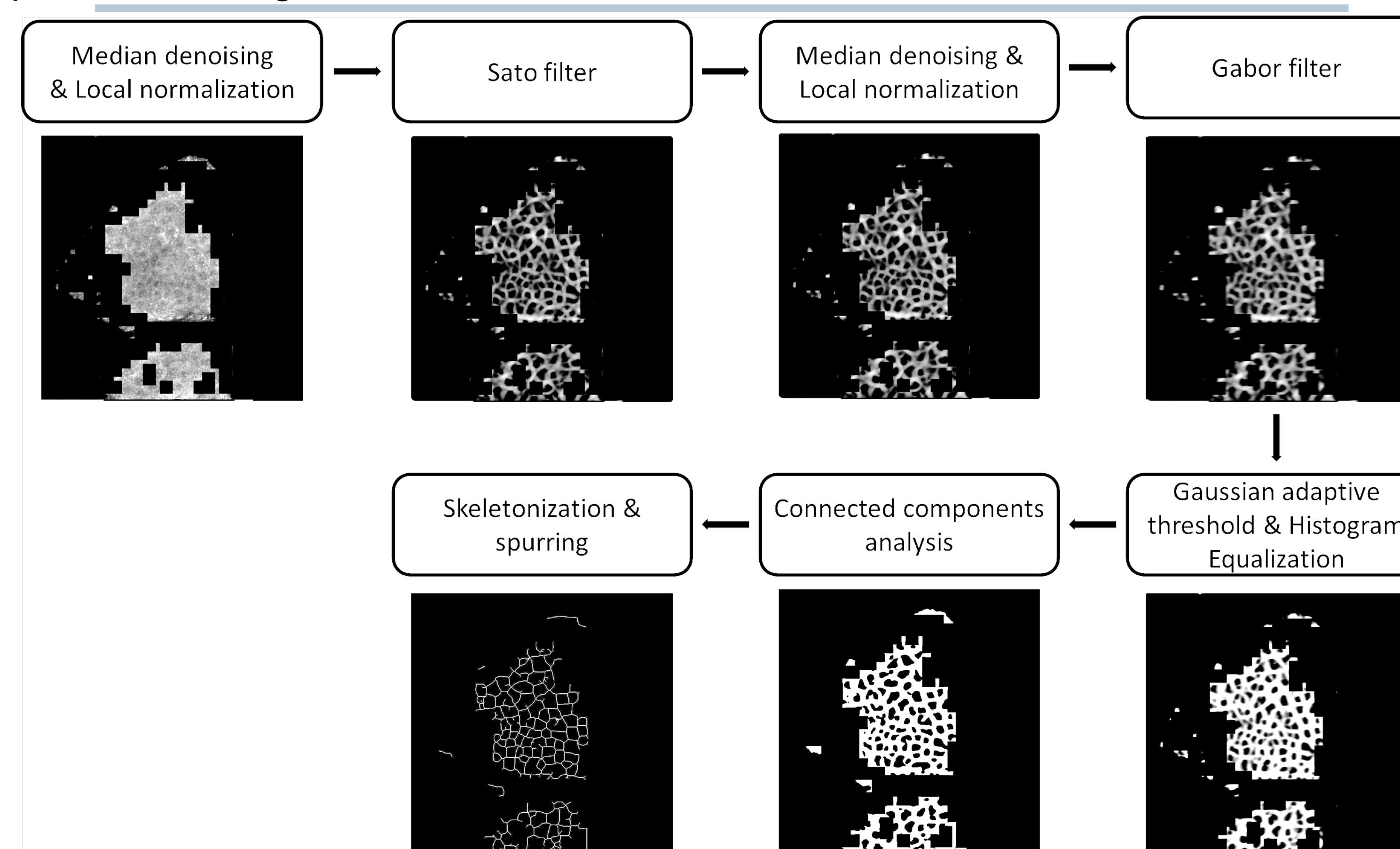


Fig.3 Steps of the identification individual

The obtained skeleton was then cleaned, and its contours, *i.e.*, cells were identified and corrected, and their centers detected.

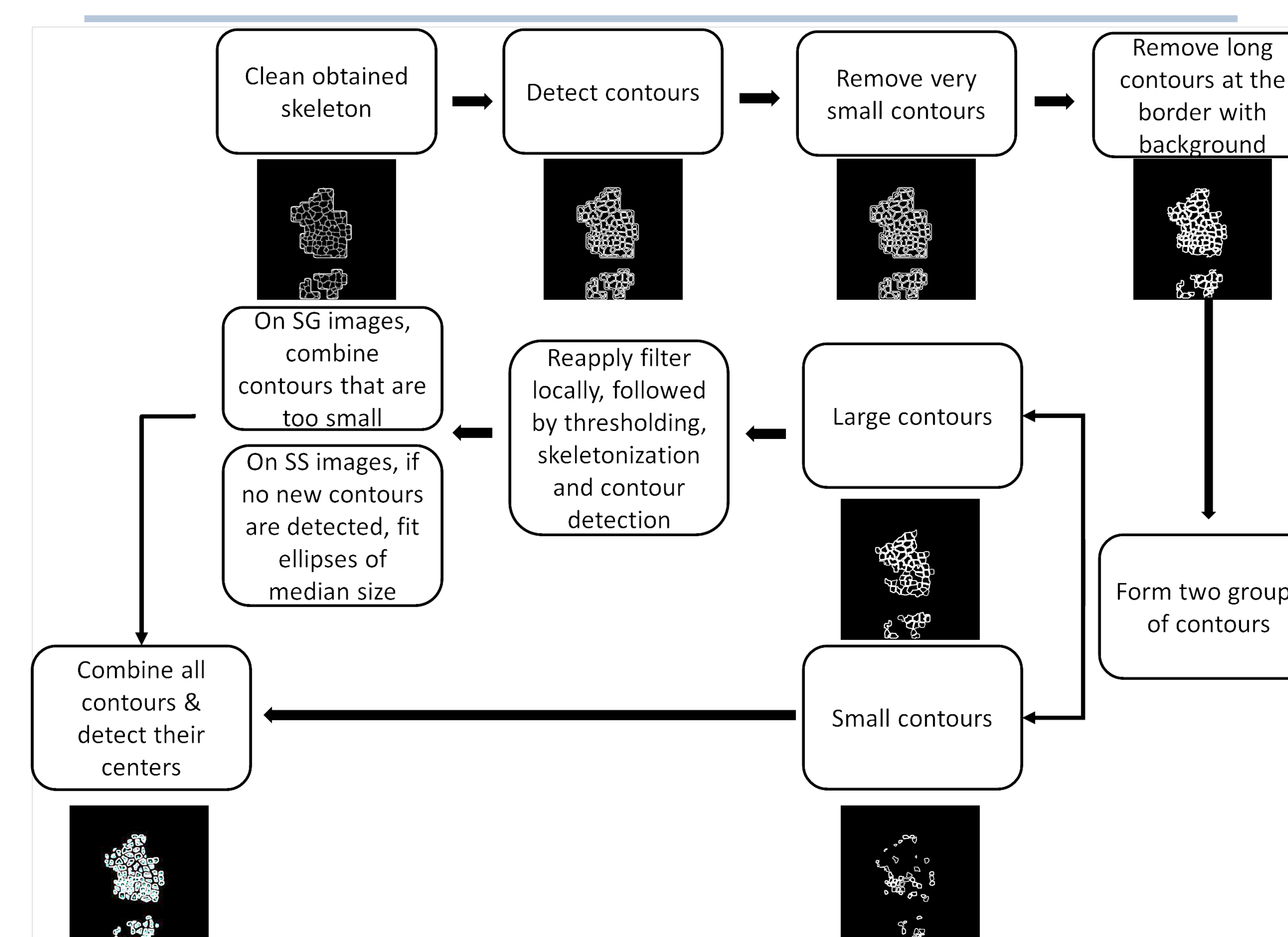


Fig.4 Steps of post-processing

The obtained cell centers were used to initiate a marker-controlled watershed<sup>6</sup> on the ROI which generated a labeled image which was compared against a manual ground truth. Two accuracy metrics were evaluated: precision and recall.

## RESULTS

We evaluate the performance of our approach with respect to two experts. When looking into the differences between the experts, we notice that expert 2 is less sensitive in his detection especially in SS images. The obtained results are more consistent with expert 1 and prove to be accurate compared to inter-expert variability.

Table 1. Table of the cell detection accuracy on *stratum granulosum* and *stratum spinosum* RCM images for two different experts

		Precision	Recall
<b>Stratum granulosum RCM image</b>	Detection vs. Expert 1	77%	85%
	Detection vs. Expert 2	64%	82%
	Expert 1 vs. Expert 2	52%	48%
<b>Stratum spinosum RCM image</b>	Detection vs. Expert 1	85%	67%
	Detection vs. Expert 2	75%	30%
	Expert 1 vs. Expert 2	20%	28%

## DISCUSSION

Our approach gives accurate (precision>75%, recall>65%) results on RCM images of the granular and spinous layers. Performance can be hindered by:

- The presence of multiple layers per image, which makes parametrization of the different steps complicated, although, parameters for a given layer are the same.
- Noise and non-uniformity of the images have a great impact on the method performance.

Computational time is about 10mn depending on the size of the ROI, which is a major advantage when compared to the time required to identify keratinocytes manually on RCM images.

**We have shown that the automated detection of keratinocytes on RCM images of the SG and SS is achievable, which is an important step towards the quantitative study of these images and of skin.**

## REFERENCES

1. M. Minsky, "Microscopy apparatus," US3013467A (1961).
2. M. Minsky, "Memoir on inventing the confocal scanning microscope," Scanning, (1988).
3. J. Bensaci et al., "Geometrical and topological analysis of *in vivo* confocal microscopy images reveals dynamic maturation of epidermal structures during the first years of life," J. Biomed. Opt., (2015).
4. M. A. Harris et al., "A Pulse Coupled Neural Network Segmentation Algorithm for Reflectance Confocal Images of Epithelial Tissue," PLoS ONE, (2015).
5. D. Gareau, "Automated identification of epidermal keratinocytes in reflectance confocal microscopy," J. Biomed. Opt., (2011).
6. F. MEYER et al., "Morphological segmentation," J. Vis. Commun. Image Represent., (1990).