



HAL
open science

N-terminal modifications, the associated processing machinery, and their evolution in plastid-containing organisms

Thierry Meinnel, Carmela Giglione

► **To cite this version:**

Thierry Meinnel, Carmela Giglione. N-terminal modifications, the associated processing machinery, and their evolution in plastid-containing organisms. *Journal of Experimental Botany*, 2022, 73 (18), pp.6013-6033. 10.1093/jxb/erac290 . hal-03754997

HAL Id: hal-03754997

<https://hal.science/hal-03754997>

Submitted on 20 Aug 2022

HAL is a multi-disciplinary open access archive for the deposit and dissemination of scientific research documents, whether they are published or not. The documents may come from teaching and research institutions in France or abroad, or from public or private research centers.

L'archive ouverte pluridisciplinaire **HAL**, est destinée au dépôt et à la diffusion de documents scientifiques de niveau recherche, publiés ou non, émanant des établissements d'enseignement et de recherche français ou étrangers, des laboratoires publics ou privés.

1 *Darwin Review*

2 **Amino terminal modifications, the associated processing machinery, and**
3 **their evolution in plastid-containing organisms**

4

5 Thierry Meinnel^{iD, @, 1, *} and Carmela Giglione^{iD, @, 1, *}

6

7

8 ^{iD} ORCID iD 0000-0001-5642-8637 (T. Meinnel); 0002-7475-1558 (C. Giglione)

9 [@] twitter @meinnel (T. Meinnel); @giglionelab (C. Giglione)

10 ¹ Université Paris-Saclay, CEA, CNRS, Institute for Integrative Biology of the Cell (I2BC),
11 91198 Gif-sur-Yvette, France

12

13 ***Correspondence:** thierry.meinnel@i2bc.paris-saclay.fr (T. Meinnel) or
14 carmela.giglione@i2bc.paris-saclay.fr (C. Giglione)

15

16

17 **Running Title:** Amino terminal modifications and their catalysts in Plantae and
18 Chromalveolata

19

20 **STATEMENT**

21 This review discusses N-termini modifications and their associated processing machinery in
22 organisms with plastids primarily gained by primary or secondary endosymbiosis.

23 **ABSTRACT**

24 The N-terminus is a frequent site of protein modifications. Referring primarily to knowledge
25 gained from land plants, here we review the modifications that change protein amino terminal
26 residues and provide updated information about the associated machinery, including that in
27 Archaeplastida. These N-terminal (Nt) modifications include many proteolytic events as well
28 as small group additions such as acylation or arginylation and oxidation. Compared with that
29 of the mitochondrion, the plastid-dedicated N-modification landscape is far more complex. In
30 parallel, we extend this review to plastid-containing Chromalveolata including Stramenopiles,
31 Apicomplexa, and Rhizaria. We report a well conserved machinery, especially in the plastid.
32 Consideration of the two most abundant proteins on Earth - RuBisCO and actin - reveals the
33 complexity of N-terminal modification processes. The progressive gene transfer from the
34 plastid to the nuclear genome during evolution is exemplified by the N-terminus modification
35 machinery, which appears to be one of the latest to have been transferred to the nuclear
36 genome together with crucial major photosynthetic landmarks. This is evidenced by the
37 greater number of plastid genes in Paulinellidae and red algae, the most recent and fossil
38 recipients of primary endosymbiosis.

39

40 **Keywords:** acetylation, aminopeptidase, arginylation, deformylation, formylation,
41 methylation, myristoylation, oxidation, plastid, proteolysis

42

43 **N-terminal protein modifications in plastid-containing organisms in brief**

44 During protein synthesis, protein N-termini are the first to emerge from the ribosome tunnel.
45 When the nascent protein emerges, it immediately interacts with a welcoming committee that
46 rapidly determines protein fate (Giglione *et al.*, 2015). Theoretically, all nascent chains
47 undergo several modifications, which then allow them to undergo further modifications,
48 interact with new partners, translocate or interact with specific compartments, or have longer
49 or shorter half-lives. Unlike other parts of the protein, the N-terminus and any co-translational
50 processes can be conditionally exposed to the crowded, highly interactive, and reactive space
51 of small and large molecules in the cytosol, matrix, stroma, or even endoplasmic reticulum
52 (ER), where they are available for additional post-translational protein modifications. The
53 remarkable reactivity of the N-terminal amino group makes the N-terminal amino acid a
54 substrate of choice for many enzymes capable of adding new groups, many of which cancel
55 the positive charge. These enzymes often specifically recognize the N-terminal residue side
56 chain and may sometimes also sense the protein sequence downstream.

57 Plastids have an endosymbiotic origin. At least two independent primary endosymbiosis
58 events occurred during evolution, one ancestral ~1.6 billion years ago from a β -
59 cyanobacterium leading to the Archaeplastida phylum with red alga the closest fossil, and
60 another more recent event from an α -cyanobacterium leading to Paulinellidae ~100 million
61 years ago. Except Paulinellidae, most Chromalveolatae have acquired their plastid more
62 recently secondarily via phagocytosis of a red alga into another non-photosynthetic eukaryote.
63 Dinoflagellates have a tertiary origin (Yoon *et al.*, 2005). Many protein modifications
64 occurring in plastids as we currently understand them therefore arise from early
65 endosymbiotic bacteria, which were progressively enslaved by a primitive eukaryote with a
66 mitochondrion. A few complete and fully annotated plastid genomes for Chromalveolata have
67 been released over the last few decades. These have revealed plastid genomes of various sizes

68 but a remarkable convergence between protein-encoding genes and evolutionary stage (**Box**
69 **1**).

70 Here we review N-terminal protein modifications in plastid-containing organisms. Plastid-
71 containing organisms span all phyla in Bikonta (see **Figure 1**). Such organisms have gained
72 their plastid in different ways and at different times during evolution, the earliest ancestor
73 most likely soon after the last eukaryotic common ancestor (“LECA”) gained the
74 mitochondrion through early endosymbiosis. Plastid enslavement and the many interactions
75 between the plastid and nuclear genomes are part of a complex and long-established process
76 that profoundly affected not only metabolism towards autotrophy in most recipient organisms
77 but also the protein modification landscape. We illustrate here several such modifications and
78 how the timescale of plastid enslavement allowed the retention or migration of key elements
79 from one genome to another (**Box 1**).

80 We first focus on N-terminal protein modifications, particularly those studies performed in
81 plastid-containing organisms. In a dedicated section, we introduce the general features of
82 methods that led to the discovery of protein modifications at the proteomic scale. We go on to
83 describe the complex machinery in plastid-containing organisms and finally describe the
84 complexity and varieties of these processes using actins and RuBisCO as exemplars.

85 **The large diversity of N-terminal modifications in plastid-containing organisms**

86 Proteins synthesized in plastid-containing organisms arise from three distinct cytosolic,
87 plastid, and mitochondrial genomes. These proteins may shuttle between compartments, with
88 the secretory pathway a rich source. In the cytosol, ribosomes distribute into free and ER-
89 associated fractions, and in the latter case early interactions between the nascent chains and
90 the secretory machinery can drive the association. As a result, cytosolic ribosomes synthesize
91 mostly cytosolic proteins, whereas ER-bound ribosomes synthesize proteins mainly

92 corresponding to the secretory and integral membranes but also a few cytosolic proteins (Reid
93 and Nicchitta, 2015). The molecular and modification landscapes of these two populations
94 may therefore be strongly affected.

95 *Co-translational amino terminal processing*

96 Protein synthesis in the cytosol leads to the incorporation of an N-terminal methionine
97 supported by the sole AUG codon. However, ribosome profiling has frequently retrieved
98 AUG start codons downstream or upstream of the annotated AUG (Li and Liu, 2020). As
99 proteomic approaches rely on the genomic annotation of open reading frames, care must
100 therefore be taken in their interpretation when dealing with N-termini. This is even truer for
101 genomes relying on less data than model organisms such as the plant dicot *Arabidopsis*
102 *thaliana*. For instance, while 19% of N-termini in *A. thaliana* are wrongly annotated, 31% of
103 tomato N-termini are wrongly annotated; no corresponding data are yet available for
104 Chromalveolata. In addition, it was established early on that there were inconsistencies in 5'
105 genome annotations in Apicomplexa (Wakaguri *et al.*, 2009). Whilst usually encoded by the
106 AUG codon, various non-AUG codons (e.g., CUG, ACG, GUG, AUU) may also initiate
107 proteins, particularly in plants (up to 35% of translation starts in tomato) (Li and Liu, 2020).
108 Nevertheless, such codons invariably lead to the incorporation of methionine (Met); indeed,
109 the initiator Met-tRNA itself directs initiation, even though imperfect or wobble codon-
110 anticodon pairing may occur (Na *et al.*, 2018).

111 Organelles use a bacterial-type translation machinery and, unlike the cytosolic mechanism,
112 which relies on archaeal-type machinery, the initiator Met-tRNA must first be modified by a
113 formyl group prior to protein synthesis. As a result, a pre-modified N-formylated methionine
114 is incorporated early in translation. This unique protein modification is not usually present in
115 mature proteins as it undergoes early cleavage (Gigliione *et al.*, 2004). In bacteria, for
116 instance, about 5% of proteins retain their N-terminus, most of which are membrane proteins

117 (Bienvenut *et al.*, 2015). This probably means that there is competition between co-
118 translational N-terminal protein modifications and the early processing of such proteins by the
119 secretory machinery including the signal recognition particle. While it remains unclear
120 whether formyl is retained or removed in metazoan and fungal mitochondria, in plant
121 mitochondria, the N-terminal formyl group is rarely displayed (Giglione and Meinnel, 2001).
122 In humans, N-formyl must be retained on cytochrome *c* oxidase subunit COX1 in the
123 mitochondrion for complex assembly (Hinttala *et al.*, 2015). A few mature formylated
124 proteins might therefore be expected in the plastids and mitochondria of plastid-containing
125 organisms (Giglione *et al.*, 2004). Unlike in plants, there are still no data on formylated
126 proteins in Chromalveolata.

127 Though not removed as frequently as the formyl group, the N-terminal methionine is also
128 generally cleaved off (Giglione *et al.*, 2004; Giglione and Meinnel, 2001; Millar *et al.*, 2019).
129 This process of N-terminal methionine excision (NME) is conserved in all living organisms
130 studied to date. About 60% of cytosolic and plastid proteins undergo NME (Giglione *et al.*,
131 2004), and it is an essential process in the cytosol of *A. thaliana* (Ross *et al.*, 2005) and the
132 plastids of monocots and dicots (Dirk *et al.*, 2001; Giglione *et al.*, 2003; Moon *et al.*, 2008;
133 Serero *et al.*, 2001). Both steps of plastid NME are also essential in Apicomplexa (Bushell *et*
134 *al.*, 2017). The molecular mechanisms underpinning NME and its importance have been
135 studied in both the cytosol and plastids of plants. In the cytosol, NME controls proteostasis by
136 ensuring tightly regulated crosstalk between the cellular proteolytic machinery and
137 glutathione homeostasis (Frottin *et al.*, 2009). Specifically, it was shown that retention of the
138 N-terminal methionine, by blocking NME, increases the cellular proteolytic machinery by
139 increasing the pool of proteins suitable for rapid degradation. Very interestingly, N-terminal-
140 retained methionines were very often found to be unacetylated when NME was inhibited,
141 suggesting that the unacetylated methionines could act as an N-degron. This is consistent with

142 a recent finding on the non-Ac-degron (see below and (Linster *et al.*, 2022)), and plastid NME
143 has been suggested to protect a specific pool of proteins from rapid degradation with retention
144 of the N-terminal methionine interpreted as a destabilizing signal (Adam *et al.*, 2011;
145 Giglione *et al.*, 2003).

146 NME is also important for further modifications that fully rely on NME, such as N-terminal
147 acetylation (Nt-acetylation) and N-myristoylation. Nt-acetylation and N-myristoylation
148 describe the addition of short or long aliphatic acetyl or acyl (C2 and C14, respectively)
149 groups to N-termini (Giglione and Meinel, 2021, 2022) by specific enzymes belonging to the
150 Gcn5-related N-acetyltransferase (GNAT) superfamily: N-acetyl-transferases (NATs) and N-
151 myristoyl-transferases (NMTs). These acyl additions make the N-terminus hydrophobic and
152 cancel the positive charge. Both modifications are co-translational, as they occur soon after
153 the nascent chain emerges from the ribosome, probably to ensure complete modification of
154 the N-terminus. As a result, Nt-acetylation is a protein modification leading to completion for
155 the majority of substrates in the cytosol, as shown in quantitative analyses performed in plants
156 (Huber *et al.*, 2020; Linster *et al.*, 2015). Nt-acetylation has also been described for the
157 plastid, where it modifies both nascent proteins arising from translation of the plastid genome
158 and proteins imported from the cytosol. In the latter case, the modification is present on the
159 proteolytically-processed new N-terminus devoid of the transit peptide (Bienvenut *et al.*,
160 2011; Bienvenut *et al.*, 2012). Unlike in co-translation, there is only partial post-translational
161 modification of nuclear-encoded imported proteins - 30% on average – although this might be
162 as high as 100% in some cases. By contrast, it is remarkable that complete Nt-acetylation
163 occurs on most plastid-encoded proteins such as photosystem 2 components (e.g., D1 or D2)
164 or the large subunit of RuBisCO (RbcL); however, no data are yet available on whether this is
165 a co-translational process, like in bacteria. Though not yet described in plastid-containing
166 organisms, post-translational Nt-acetylation and N-myristoylation have been detected in the

167 cytosol of metazoans (Gigliome and Meinel, 2022; Lange *et al.*, 2014). One cannot exclude,
168 therefore, that proteins from plastid-containing organisms undergoing proteolysis in the
169 cytosol or other subcellular compartments might further undergo N-myristoylation and Nt-
170 acetylation.

171 Nt-acetylation is frequent in both the cytosol and plastids of plants, and the modification has
172 also been retrieved in Stramenopiles (diatoms) and Rhizaria (Huesgen *et al.*, 2013;
173 Oberleitner *et al.*, 2022). By contrast, N-myristoylation occurs in about 1-2% of proteins. N-
174 myristoylation has been studied in detail in *A. thaliana*, in which nearly all the modified
175 proteome has now been characterized (Castrec *et al.*, 2018; Majeran *et al.*, 2018). N-
176 myristoylation studies using a clickable precursor have also been performed in *Toxoplasma*
177 *gondii*, where 65 targets were identified and many others predicted (Alonso *et al.*, 2019;
178 Broncel *et al.*, 2020). The substrate specificity of *Plasmodium falciparum* NMT was studied
179 using an array of octapeptides, and it was shown to display close similarities with *A. thaliana*
180 and human NMT, while the yeast isoform appeared to feature slightly more restricted
181 selectivity (Pierre *et al.*, 2007; Traverso *et al.*, 2013a). N-myristoylation usually allows its
182 protein targets to anchor the membrane towards the cytosol. The transmembrane microneme
183 protein MIC7 was shown to display N-myristoylation, with the myristoylated N-terminus
184 facing the lumen (Broncel *et al.*, 2020). This suggests that the modified N-terminus might flip
185 from the outer to the inner side of the membrane, possibly during co-translational insertion of
186 the transmembrane domains.

187 N-myristoylation has been studied in detail in *A. thaliana*. Membrane specificity not only
188 depends on N-terminal myristoylation but also vicinal features including palmitoylation of
189 cysteines next to the modified N-terminal glycine (Boisson *et al.*, 2003; Majeran *et al.*, 2018;
190 Pierre *et al.*, 2007; Traverso *et al.*, 2013b). In plants, the essential nature of N-myristoylation
191 likely depends on a set of major kinases and small G-proteins such as ADP-ribosyl factor

192 (ARF) at various crucial development stages, including fertilization and germination (Bayer *et*
193 *al.*, 2009; Pierre *et al.*, 2007; Renna *et al.*, 2013). Evolutionary investigations have also
194 revealed a small number of fully conserved NMT targets in all organisms including ARFs
195 (Meinzel *et al.*, 2020). Overall, the features of Nt-acetylation and N-myristoylation appear to
196 be similar in metazoans and plastid-containing organisms, indicating the early acquisition of
197 the system after the LECA and before primary endosymbiosis of the β -cyanobacterium
198 leading to the primary plastid ~1.6 billion years ago.

199 *Intracellular proteolysis leads to new N-termini*

200 Since most mitochondrial genes and many plastid genes have migrated to the nuclear genome
201 during evolution, proteins transit from the cytosol to organelles by taking advantage of
202 targeting peptides. This phenomenon is well studied and described in plants (Christian *et al.*,
203 2020). This transit usually leads to proteolytic cleavages by dedicated machineries, similar to
204 proteins transiting via the secretory pathway. In fact, recent data indicate that it is very likely
205 that the secretory pathway is used as a means for proteins to cross the three to four membrane
206 layers that separate the plastid from the cytosol in Chromalveolata, in which plastids originate
207 from (i) secondary endosymbiosis (i.e., most phyla including Cercozoa like *Bigelowiella*
208 *natans* (Hopkins *et al.*, 2012) but not ciliates and foraminifera, **Figure 1**) or (ii) primary
209 endosymbiosis (only Paulinellidae in the phylum). It appears that the ER signaling peptide
210 must be fused to a transit peptide for protein import into complex plastids like those in the
211 diatom *Thalassiosira pseudonana* (Huesgen *et al.*, 2013). The situation in Apicomplexa is
212 most similar to that in non-photosynthetic plastid- (so-called apicoplast) targeting sequences
213 (Tonkin *et al.*, 2008). The apicoplast also has a secondary origin and is separated from the
214 cytosol by four membranes. Like diatoms, Apicomplexa use a target peptide formed from the
215 fusion of an ER- and plastid-targeting sequence. In addition to the plastid, these organisms
216 contain advanced secretory compartments including rhoptries, micronemes, or dense granules,

217 which are specialized for parasite-host interactions (Sheiner and Soldati-Favre, 2008).
218 Consequently, complex proteolytic events occur in these unique compartments, leading to
219 new downstream cleavages of secreted proteins. These involve dedicated proteases including
220 aminopeptidase N and aspartyl protease ASP5, which we will not discuss further (Coffey *et*
221 *al.*, 2018; Dogga *et al.*, 2017). Additional modifications including acetylation have also been
222 described in this pathway (Nyonda *et al.*, 2022).

223 **Methods of investigation and the discovery of protein modifications**

224 *Protein modifications and modified proteomes*

225 A range of approaches have now been used over many years to discover and annotate
226 modified proteomes (Meinzel and Giglione, 2008), including methods based on: (i)
227 precursors tagged with radioactive or reactive species including clickable moieties
228 (Kallemeijn *et al.*, 2021; Suazo *et al.*, 2021) or featuring unique chemical bond sensitivity
229 (e.g., acyl biotin exchange for S-acylation); (ii) enrichments of modified peptides using
230 affinity approaches such as Strong Cation eXchange columns (SCX; e.g., phosphorylation) or
231 monoclonal antibodies (e.g., acetylation); (iii) *in vitro* challenges of the catalyst with sorted or
232 random alanine-scanning libraries when the enzyme modifier is known; (iv) affinity-based
233 approaches such as proximity assays to visualize and identify protein modification substrates
234 (e.g., methylation (Poulard *et al.*, 2012)); (v) site-directed variants with substitutions
235 abolishing target modification site reactivity or mimicking the modified target; and (vi)
236 genome-wide mass spectrometry approaches with dedicated surveys for specific
237 modifications (e.g., ubiquitination with GGK tags (Parker *et al.*, 2019)) (Aebersold and Mann,
238 2016). Complementary bioinformatics approaches are integral to progress in this field,
239 particularly when the modification is frequent and complex, for instance in the case of
240 palmitoylation (Blanc *et al.*, 2015). Target catalogs are listed in several repositories and can
241 be searched. Annotations in protein databanks remain incomplete, for instance in the

242 reference protein resource UniProtKB (Protein KnowledgeBase), but focused efforts to
243 integrate these data are currently underway (Zahn-Zabal *et al.*, 2020).

244 *In vitro* and *in vivo* approaches have frequently been combined with structural and
245 bioinformatics analyses to further complete the picture. *In vitro* approaches are often used
246 upstream to help rationalize the data obtained from *in vivo* samples, which may sometimes be
247 difficult to interpret due to sample preparation artefacts such as oxidation of thiol-containing
248 residues or chemical acetylation of lysines (Baeza *et al.*, 2015). Furthermore, the sample may
249 be complex, sometimes producing billions of overlapping signals. The interpretation of those
250 approaches that use reactive precursors can also be ambiguous, as the precursor may be
251 metabolized into other compounds used by other catalysts on different targets or lead to weak
252 signals that do not represent the real stoichiometry or biology. Lysine acetylation, for
253 instance, is most often associated with low stoichiometry (see Fig. 7 in (Lindahl *et al.*, 2019)
254 and (Hansen *et al.*, 2019; O'Leary *et al.*, 2020; Prus *et al.*, 2019)). All data arising from these
255 diverse approaches therefore provide qualitative information about modified subproteomes.
256 However, the quantitative assessment of modified proteomes remains in its infancy, as
257 stoichiometry, competition with other modifications, tissue and environmental heterogeneity,
258 or isoform heterogeneity require characterization and are usually poorly documented.

259 *The special case of N-terminal modifications and their discovery*

260 The discovery of position-specific modifications becomes even more challenging. These
261 modifications need to be identified on only one peptide and not randomly on any peptide
262 whatever its position. This restricts the identification search space to an average of one out of
263 20-40 tryptic peptides. For instance, a given protein has only one N-terminus and an average
264 of 32 lysine acceptors available for trypsin cleavage. In addition, classic proteomic label-free
265 approaches cannot be used for protein quantification and stable isotopes need to be employed.
266 To retrieve proteome-wide information, N-terminal peptides must be enriched. Specific

267 properties of the N-terminal peptide are therefore exploited for this purpose. One major
268 property relies on NH₂ terminal group reactivity with aldehyde derivatives. The amino
269 terminal group is often acetylated in eukaryotes or can react with dedicated modifiers.
270 Although the pK is much lower than that of lysines and would theoretically allow the labeling
271 of only one group if the reaction is at the proper pH, most protocols lead to the modification
272 of both amino groups. This was certainly the case in early approaches such as SILProNAQ
273 (Bienvenut *et al.*, 2017; Bienvenut *et al.*, 2012) or COFRADIC, which are readily applied to
274 plants (Tsiatsiani *et al.*, 2014; Tsiatsiani *et al.*, 2013). Improved workflows have now been
275 described for plants (Venne *et al.*, 2015). Here we only summarize the main features and refer
276 interested readers to an excellent recent review on the topic in plants (Perrar *et al.*, 2019).

277 The chemical labeling reaction takes place before proteins are cleaved by proteases like
278 trypsin, which cleaves at lysines and arginines. As a result, this blocks lysine cleavage by
279 trypsin and produces longer peptides. Some peptides cannot be analyzed in this way because
280 their length is incompatible with mass spectrometry. In these cases, a good alternative is the
281 use of other proteases such as endoproteinase GluC, which cleaves after glutamates (Zhang *et al.*,
282 2018). Terminal Amine Isotopic Labelling of Substrates (TAILS) coupled with dimethyl
283 labeling is one commonly used approach (Rowland *et al.*, 2015; Zhang *et al.*, 2015). The
284 HUNTER workflow (Weng *et al.*, 2019), which also relies on chemical dimethylation, was
285 recently used to examine *Paulinella chromatophora* processing in the chromatophore (**Figure**
286 **2**). Internal peptides react with a hydrophobic chain (undecanal, a C11 aliphatic aldehyde),
287 and the N-terminal peptides can be enriched by reverse phase chromatography. Stable isotope
288 labeling is used when quantification is required, for instance deuterated acetic acid for
289 acetylation quantification. Tandem mass tag labeling has been implemented in the TAILS
290 workflow (Zhang *et al.*, 2018). Another alternative is to use click chemistry if precursors can
291 be incorporated in the growth medium. So far, however, unlike for other organisms such as

292 fungi or metazoans, few large-scale approaches have been described for plastid-containing
293 organisms, probably because they display almost complete autotrophy. For instance, N-
294 myristoylation has been reported for several proteins using azido or alkyne derivatives (Boyle
295 *et al.*, 2016; Lee *et al.*, 2021). Catalytic parameters obtained *in vitro* - including k_{cat}/K_m values
296 - of N-terminal peptides help to categorize substrates and the reaction as exemplified by the
297 systematic analysis of *A. thaliana* N-myristoylation (Castrec *et al.*, 2018).

298 **The processing machinery of plastid-containing organisms**

299 In this section, we discuss current knowledge about the catalysts that specifically mediate N-
300 terminal protein processing and their associated specificity in plastid-containing organisms.
301 The main modification events are summarized in **Figure 3**. We use representative members of
302 each phylum (**Figure 1**) to provide examples of the corresponding machinery (see also
303 **Tables 1** and **2**).

304 The green plant *A. thaliana* lies in the Archaeplastida phylum. In the Chromalveolata phylum,
305 which includes Stramenopiles, Alveolata, and Rhizaria (SAR), we use the oleaginous alga
306 *Nannochloropsis gaditana* - which features lipid-production capacity up to six-fold higher
307 than those of other algae (Radakovits *et al.*, 2012) - as a model of Stramenopiles. We also use
308 *Paulinella* species to exemplify the Rhizaria phylum and *Toxoplasma gondii* - a non-
309 photosynthetic organism - as a model of Alveolata (**Figure 1**). All organisms were chosen
310 because of the superior quality of their genome annotation and assembly. We do not discuss
311 Euglenozoa (see further information in the “Concluding remarks”).

312 *Proteolytic events promoting new protein N-termini*

313 Plants display a plethora of peptidases impacting protein N-termini leading to new N-terminal
314 protein modifications (**Table 1**). These include the dedicated endoproteases that cleave off the
315 signal/targeting signals in the ER, mitochondria, and plastid, namely signal peptide peptidase

316 (SIP/SIPL), the mitochondrial-processing peptidase (MPP), and the stromal processing
317 peptidase (SPP). The substrate specificity appears rather large, and the activity is completed
318 by further aminopeptidases (APP) that trim the N-terminus. The nature of these APPs is not
319 completely understood, but some of them (e.g., MPA1, LAP2/3, and DAP2) have been found
320 in the *A. thaliana* plastid, where they may be involved in a multistep processes leading to
321 progressive trimming of new N-terminal moieties (Teixeira *et al.*, 2017) (**Table 1**). It is
322 interesting that a number of these proteases show significant similarity to the *PepP* bacterial
323 aminopeptidase gene product, which also shares homology with MetAPs - the conserved
324 component of the NME machinery (see below) - which promotes specific N-terminal
325 processing in bacteria likely in combination with MetAP.

326 In Chromalveolata, the transit peptide of plastid-targeted proteins is bipartite to ensure ER and
327 then plastid retargeting, and it appears to be cleaved by homologs of SPP. Diatoms and
328 Apicomplexa including *T. gondii* (van Dooren *et al.*, 2002) encode an unambiguous SPP
329 homolog (**Table 1**). No such SPP homolog has been detected in the rhizarian Paulinellidae,
330 which might explain why only partial cleavage of the long targeting peptide has been
331 retrieved (Oberleitner *et al.*, 2022). SIP and MPP homologs have been identified in diatoms
332 and Apicomplexa (**Table 1**)

333 Of the APPs, MetAPs have more restricted specificity and are involved in NME. Dedicated
334 forms appear in the organelles and cytosol in plants (Giglione *et al.*, 2000b). Cytosolic
335 isoforms have an N-terminal extension featuring polybasic or zinc-binding domains, both of
336 which are believed to be involved in ribosome targeting. In the plastid, NME is initiated by
337 deformylation, as MetAPs cannot cleave the formyl group. Peptide deformylases (PDFs)
338 unmask the N-formyl methionine for methionine removal by MetAPs (Giglione *et al.*, 2000b).
339 Though not formally true proteases, PDF's action is closely related to that of an
340 aminopeptidase, and PDFs display the same HEXXH motif in the catalytic center as many

341 proteases (Giglione *et al.*, 2000a). Both MetAPs and PDF homologs can be retrieved in
342 Stramenopiles, Apicomplexa, and Rhizaria. In Paulinellidae, PDFs and MetAPs are encoded
343 within the chromatophore (**Box 1**). Finally, pyroglutamyl peptidases can cleave pyroglutamate
344 in the cytosol.

345 *Addition reactions at the N-terminus*

346 The mechanisms leading to the addition of a chemical group to the N-terminus involve a large
347 range of modifications.

348 Formylation

349 Though incorporated early in protein translation, we will consider N-formylation as the very
350 first modification revealed by any protein. This modification relies on Met-tRNA^{fMet}
351 formyltransferase (FMT), an enzyme that specifically modifies both mitochondrial and plastid
352 initiator tRNAs using 10-formyltetrahydrofolate as the methyl donor. The enzyme is
353 conserved in diatoms and encoded in the nuclear genome, where it features a transit peptide.
354 The situation is different in other Chromalveolata such as Apicomplexa, as (i) in *Toxoplasma*
355 FMT appears to be the second part of a two-domain protein, and (ii) as yet there is no
356 evidence of an FMT homolog in *Plasmodium*, whose genome is significantly smaller than
357 other Apicomplexa. In Paulinellidae, the gene is encoded in the chromatophore - the plastid
358 with a large genome - as a remnant of early endosymbiosis (**Box 1**). In *B. natans*, a Cercozoa
359 with plastids of secondary origin - no homolog has been found. In *A. thaliana*, FMT is
360 essential, as gene inactivation leads to an albino phenotype (pigment-defective *pde194*;
361 (Bryant *et al.*, 2011)). Although it may also be essential in Chromalveolata, organisms in the
362 phylum lacking an FMT homolog might be less dependent on the efficient organelle
363 translation initiation expected from formylation due to the smaller plastid genome, as seen in
364 Apicomplexa or parasitism (see also **Box 1**).

365 Acetylation

366 N-terminal acetylation (Nt-acetylation) is the most common N-terminus modification. The
367 modification is ensured by a complex machinery which is similar in most eukaryotes, and the
368 catalytic subunits can be identified in most plastid-containing organisms including
369 Chromalveolata, Archaeplastida, and Euglenozoa (**Table 2**). The many different NATs and
370 their associated cell localization, substrate specificity, and activity on cellular proteins are
371 conserved in eukaryotes and are detailed in **Figure 4A**. It is remarkable, however, that some
372 important ancillary subunits, including HYPK of the NatA complex (except in diatoms) or
373 NAA35 of the NatC complex in Apicomplexa, are missing or could not be identified in
374 Chromalveolata. The same is also true for Paulinellidae; while an NAA40 homolog could not
375 be retrieved, there was acetylation of its specific histone substrates. Remarkably, Paulinellidae
376 also have NAA80 activity, as actin derivatives display N-terminal acidic acid (i.e., Glu or
377 Asp) acetylation, a modification which appears also to occur in *Toxoplasma* but not in
378 *Plasmodium* or plants (**Table 2**). NAA80 homologs have not been identified in plastid-
379 containing organisms, but one cannot exclude that this activity arises from another type of
380 NAT; for instance, human NAA10 devoid of the NAA15 subunit displayed such activity (Van
381 Damme *et al.*, 2011). Finally, it is worth mentioning that recent data from large-scale N-
382 terminal analyses have indicated that N-terminal acetylation also occurs in the Apicomplexa
383 secretory pathway. Though the origin of AcetylCoA still needs to be established, it likely
384 originates from a NAT, but the specific enzyme responsible has yet to be identified (Nyonda
385 *et al.*, 2022). In *A. thaliana*, NatA, NatB, and NatE appear to be essential complexes as
386 demonstrated in knockout experiments of the various subunits of each complex (Armbruster
387 *et al.*, 2020; Ferrandez-Ayela *et al.*, 2013; Huber *et al.*, 2020; Linster *et al.*, 2015). NatC
388 inactivation is associated with photosynthetic defects (Pesaresi *et al.*, 2003), while NAA60 is
389 associated with high stress responses (Linster *et al.*, 2020).

390 The Plantae phylum displays a well conserved acetylation machinery (NatG) dedicated to the
391 plastid (Bienvenut *et al.*, 2020). There are two NatG subfamilies, NAA90 and NAA70
392 (Giglione and Meinel, 2021). Unlike NAA70, NAA90 homologs are found in red algae and
393 the corresponding gene is usually encoded in the plastid (except in some Glaucophyta such as
394 *Cyanophora paradoxa*). This is in keeping with only partial nuclear relocalization of the
395 plastid genome in red algae (**Box 1**). In addition, this indicates that NAA90 is the ancestral
396 NatG; as it can only be identified in cyanobacteria, it has likely evolved from the RimIJL
397 family seen in all bacteria to mediate an important but as yet unknown acetylation required by
398 the photosynthetic apparatus. Accordingly, two NatG homologs can be found in the plastid
399 genome of Paulinellidae, which underwent very recent endosymbiosis from an α -
400 cyanobacterium (Meinel, 2022). This classification is related to the RbcL type phylogeny,
401 which strongly relies on N-terminus differences. Representative members of the four subtypes
402 (A-D) of type 1 RbcL N-termini and the known associated modifications are aligned in **Table**
403 **3**. NAA70 homologs – but not NAA90 – have been detected in diatoms and other Cercozoa.
404 However, it is currently unknown which forms control plastid-resident Nt-acetylation or
405 where the modification takes place.

406 Myristoylation

407 N-myristoyltransferase (NMT) is the only enzyme known to catalyze N-myristoylation in
408 eukaryotes. NMT uses cytosolic myristoyl CoA to promote co-translational N-myristoylation
409 (Giglione and Meinel, 2022). In plastid-containing organisms, fatty acid synthesis is
410 performed in the plastid. Myristate probably needs to travel from the plastid through the ER to
411 be eventually available as MyrCoA in the cytosol for NMT-catalyzed N-myristoylation. In
412 parasites such as Apicomplexa, depending on their amebic or parasitic form, the origin of
413 myristate could differ, as most organisms can pump in fatty acids from the medium including
414 the host's cytosol or blood. This is unlike autotrophic organisms such as diatoms, which only

415 rely on plastid synthesis. NMTs have been identified in Apicomplexa but not yet in
416 Paulinellidae, though a homolog was identified in another Cercozoan (*Bigelowiella natans*,
417 **Table 2**). N-myristoylation is a typical modification whose appearance during evolution is
418 linked to early eukaryogenesis, most likely by fusion of two NAA catalytic subunits (Meinzel
419 *et al.*, 2020). N-myristoylation, surprisingly, does not occur in the plastid despite being the
420 site of fatty acid synthesis in plastid-containing organisms, while other organisms only rely on
421 food uptake to fuel their cytosolic needs (Giglione and Meinzel, 2022).

422 Arginylation

423 N-terminal arginylation is an essential component of the N-degron protein degradation
424 pathways (Varshavsky, 2019). Arginine is added on amino-terminal acidic residues such as
425 oxidized Cys, Asp, or Glu - either native or arising from oxidation of Asn or Gln (see below).
426 This arginylation guides targeted proteins to the proteasome complex, where the protein is
427 degraded. Arginyl-tRNA-protein transferases (ATE) promote the transfer of arginyl from the
428 Arg-tRNA to the protein. The ATE knockout mutant, initially identified as the delayed leaf
429 senescence *dls1* mutant in *A. thaliana* (Yoshida *et al.*, 2002), actually displays a broad range
430 of phenotypes including enhanced seed dormancy and improved hypoxia tolerance (see
431 phenotypes and associated references in Figure 2 in (Dissmeyer, 2019)). We retrieved ATE
432 homologs in Chromalveolata including diatoms and some Cercozoa (*Plasmodiophora*
433 *brassicae*) but none yet in Paulinellidae and Apicomplexa (**Table 2**).

434 Methylation

435 Methylation is a rare modification catalyzed by protein N-methyltransferases (NTMs), with
436 cytosolic activity in both plants and diatoms. Protein methylation has been reported in the
437 plastids of plants for a couple of plastid encoded-ribosomal proteins but also for the small
438 subunit of RuBisCO after cleavage of its transit peptide. An NTM (RBCMT) was proposed to
439 mediate RbcS monomethylation (Houtz *et al.*, 2008; Ying *et al.*, 1999), but to date no catalyst

440 has been identified for the ribosomal activity (**Table 2**). Note that RBCMT should not be
441 confused with another NTM (LSMT) that appears to be mostly involved in Lys14
442 trimethylation of RbcL. Homologs of cytosolic NTM exist in diatoms and Apicomplexa, and
443 a homolog of the plastid RBCMT exists in diatoms. Modifications by NTM appear to affect
444 N-terminal small residues such as Ala, Ser, or Pro followed by Pro-Lys (**Table 2**). Such a
445 specific pattern restricts the modified proteome to only few targets.

446 *Oxidative events occurring at the N-terminal residue*

447 The amino terminal residue may undergo specific oxidation as a result of enzyme-catalyzed or
448 chemical processes (Davies, 2005). Proteome-wide protocols usually start with protein
449 oxidation leading to Met and Cys oxidation. They are therefore poorly informative about the
450 oxidative state of the proteins. Dedicated approaches for protein oxidation have been
451 established for plants, for instance during oxidative stress (Jacques *et al.*, 2015). These have
452 revealed that methionines, especially those of the plastid proteome, are a hotspot of oxidative
453 stress. Despite trends to retain protein integrity with repair systems, these processes are
454 closely associated with protein homeostasis - so-called proteostasis - and they contribute to
455 protein half-life by driving them specifically to degradation.

456 Methionine sulfoxide reduction

457 Methionine is extremely sensitive to oxidation of its sulfur group by reactive oxygen species
458 into sulfenic, sulfinic, sulfonic, or sulfoxide forms (Davies, 2005). Oxidation may lead to two
459 stereoisomers. Though methionines are often retrieved proteolytically from the N-terminus, as
460 noted above, a significant number are kept and often protected by acetylation, for instance by
461 NatB, NatC, NatE, or NatH.

462 All cells are equipped with a dedicated salvage repair enzyme machinery called peptide-
463 methionine-S-oxide reductase (MRS), which includes two catalysts (MRSA and MRSB), each

464 specific for either the *S* or *R* stereoisomer, respectively. Plastid-containing organisms also
465 contain this machinery (**Table 2**), though we could not identify it in Paulinellidae. Plants
466 possess an extremely diverse machinery localized in all cell compartments including highly
467 oxidative organelles like plastids and mitochondria. However, the specific mitochondrial
468 machinery remains to be identified in *A. thaliana*. Mitochondrial forms have been identified
469 in other plants (Tarrago *et al.*, 2009). Overall, the machinery contributes to the general
470 reduction of this residue (Rouhier *et al.*, 2006) and it is conserved in Archaeplastida (Tarrago
471 *et al.*, 2009). Whether N-terminal methionines are more sensitive to oxidation than internal
472 methionines, possibly because they are more exposed to the outer, more oxidative
473 environment, is unknown. Internal methionines are rather buried and protected because of the
474 amphipathic but more hydrophobic character of this linear side chain.

475 Oxidation of cysteines

476 Like mammals, plants display an active enzyme machinery that contributes to the oxidation of
477 cysteine-sensitive N-terminal residues. This includes Nt-Cys cysteine oxidases, known as
478 plant cysteine oxidases (PCOs) in plants (Graciet *et al.*, 2010; Vicente *et al.*, 2019; Weits *et*
479 *al.*, 2014; White *et al.*, 2017). Cysteine oxidases have not been retrieved in Chromalveolata,
480 and whether they use other devices to achieve this aim is unknown. In plants, this oxidation
481 machinery was shown to be directly related to protein degradation, as it is sensed by N-degron
482 degradation pathways in the cytosol (Gibbs *et al.*, 2016; Vicente *et al.*, 2019; Weits *et al.*,
483 2014).

484 The Nt-Cys oxidation and degradation system serves as sensor of oxygen concentration
485 (Dissmeyer, 2019; Hammarlund *et al.*, 2020). Under normal oxygen concentrations, Nt-Cys
486 oxidation leads to Nt arginylation by ATE and recognition by ubiquitin ligases such as PRT6
487 in plants, which target the protein for proteasome degradation. Under hypoxia - for instance
488 triggered by flooding or waterlogging in plants - the Nt-Cys is no longer oxidized and the

489 protein is not degraded, which promotes a hypoxic response. This response involves ERF-VII
490 transcription factors but also other targets like the polycomb repressive complex 2 subunit
491 VERNALIZATION 2 or LITTLE ZIPPER 2 (Gibbs *et al.*, 2018; Holdsworth and Gibbs,
492 2020; Weits *et al.*, 2019).

493 *Other N-terminal modifications*

494 Gln and Asn deamidations

495 Nt-Asn (NTAN) and Nt-Gln (NTAQ) deamidases catalyze the conversion of Asn and Gln
496 residues into Asp and Glu (Graciet *et al.*, 2010; Vicente *et al.*, 2019; Weits *et al.*, 2014; White
497 *et al.*, 2017). Nt amidases have been identified in Stramenopiles and Rhizaria but not yet in
498 Paulinellidae and Apicomplexa. In the plant cytosol, Nt deamidation is sensed by N-degron
499 degradation pathways (Gibbs *et al.*, 2016; Vicente *et al.*, 2019; Weits *et al.*, 2014).

500 Pyroglutamate cyclization

501 Pyroglutamyl formation corresponds to the spontaneous cyclization of glutamate or glutamine
502 residues in peptides and proteins. This cyclization is usually located at the N-terminus and
503 leads to -18 and -17 Da mass shifts (Liu *et al.*, 2011; Schilling *et al.*, 2007; Schilling *et al.*,
504 2008). Cyclases in some plants, such as in the latex of *Carica papaya*, accelerate the reaction.
505 There also exist aminopeptidases that can cleave off the N-terminal pyroglutamate residue
506 (**Table 1**). Homologs of these peptidases can be retrieved in diatoms and Apicomplexa (**Table**
507 **1**).

508 **The remarkable and unique examples of N-terminal modifications of actins and**
509 **RuBisCO, the most abundant proteins on Earth**

510 In this last section, we describe two major targets - the two most abundant proteins on Earth
511 actins and RuBisCO (Ellis, 1979; Raven, 2013) - and their associated protein machinery as
512 exemplars of N-terminal modifications. RuBisCO is a plastid-resident major complex

513 associated with CO₂ uptake, scavenging, and autotrophy in plastid-containing organisms, and
514 actin is a major cytoskeletal component. The respective N-terminal sequences and associated
515 modifications in plastid-containing organisms are depicted in **Tables 3 and 4** for the RbcL
516 catalytic component of RuBisCO and actin isoforms, respectively. The data show that these
517 abundant proteins have independently developed specific modification schemes that mostly
518 mimic each other: trimming up to residue 3, while starts on residues 1 or 2 are the rule for
519 most mature proteins relying on NME. This unique processing involves not only Nt-
520 acetylation and NME but also processing of the second residue and unusual Nt-acetylation
521 events (**Figure 4B**; **Tables 3 and 4**). The overall mechanism has yet to be deciphered,
522 although recent data have described, for instance, the dedicated Nt-acetylation machinery in
523 mammals (Drazic *et al.*, 2018; Drazic *et al.*, 2022). **Figure 4B** proposes the mechanism
524 allowing the cytosol to achieve this remarkable unique scheme for actin. In mammals, this
525 involves an N-acylaminopeptidase (ANAP) removing the NatB-acetylated N-terminal
526 methionine. Mammalian ANAP consists of a purified and characterized 77 kDa monomer
527 (Sheff and Rubenstein, 1992), but the associated gene remains elusive. Whilst plants and
528 diatoms do not apparently display this unique actin modification pattern, Apicomplexa and
529 Cercozoa do (**Table 4**). The associated machinery has yet to be clearly discovered but could
530 mimic the mammalian one.

531 Similarly, a dedicated RbcL processing machinery occurs in plastid-containing organisms,
532 type 1B RuBisCO (**Table 4**). The machinery leading to this unique processing has yet to be
533 determined, but some hypotheses have been proposed (Houtz *et al.*, 2008). Note that
534 dinoflagellates (Alveolata; **Figure 1**) feature a type II RbcL encoded in the nuclear genome
535 and whose active form corresponds to a homodimer of RbcL without RbcS (Tabita *et al.*,
536 2008). Finally, it is remarkable that the small RbcS subunit of RuBisCO is also encoded in the
537 plastids of many unicellular plastid-containing organisms but has relocated to the nucleus of

538 land plants (**Box 1**). In this latter situation, the transit peptide of its precursor is cleaved off
539 and further monomethylated (Houtz *et al.*, 2008). In any case, the active type 1B RuBisCO
540 quaternary structure is an octamer of the large (RbcL) and the small (RbcS) subunits (LS8).

541 Overall, it is remarkable that the most abundant proteins have developed unique N-terminal
542 protein modification mechanisms. Whether this is due to their abundance and related stability
543 is unknown.

544 **Concluding remarks and future perspectives**

545 Here we discussed the remarkable conservation but diversity of the modification machinery
546 and proteomes of plastid-containing organisms. We are fully aware that we have not
547 discussed Euglenozoa, a photosynthetic plastid-containing organism in the Excavata phylum
548 (**Figure 1**). This was deliberate, not least due to the generally poor knowledge about these
549 organisms, especially with respect to N-terminal protein modifications. We identified
550 NAA10, NAA20, NAA30, and NAA50 homologs in *Euglena gracilis* and NMT in *Euglena*
551 *longa*. A recent genome-wide integrated analysis of *E. gracilis* will be helpful for more
552 accurate analyses of the associated N-terminal protein modification machinery in Euglenozoa
553 (Ebenezer *et al.*, 2019).

554 N-terminal protein modifications generally serve various crucial purposes, primarily
555 dedicated to cellular localization. They also act as unambiguous degradation signals in plants
556 (Dissmeyer, 2019; Gibbs *et al.*, 2016). How and if this is also true in the plastid is unknown
557 and is currently under investigation (Bouchnak and van Wijk, 2019). In the cytosol, very
558 recent data have shown that not only oxidation but also Nt-acetylation contribute to protein
559 stability and are crucial for stress adaptation; this appears to be a role of the small ancillary
560 subunit HYPK of the NatA complex, which was not retrieved in Chromalveolata. Plant
561 HYPK plays a crucial role in plant adaptation to non-marine environments (Gong *et al.*, 2022;

562 Linster *et al.*, 2022). This responsive role involving Nt-acetylation is also true for plant
563 adaptation to pathogenic attack (Xu *et al.*, 2015). The unique adaptation of land plants to
564 aerial life involves exposure to drought, salt stress, waterlogging, and flooding that may
565 differentially affect distinct areas of different organs (roots vs shoots, for instance).
566 Chromalveolata are usually unicellular marine, fresh water, or parasitic organisms that
567 possibly do not suffer similar events or may adapt differently through protection from their
568 siliceous shell, Finally, N-terminal ubiquitination is an N-terminal protein modification that
569 has been described in mammals as a modification that contributes to shorten protein half-life
570 (Meinzel *et al.*, 2005). So far, however, no such modification has been described in plastid-
571 containing organisms, including plants and diatoms.

572

573 **ACKNOWLEDGEMENTS**

574 The team's research is funded by the French Agence Nationale de la Recherche (ANR-13-
575 BSV6-0004, ANR-17-CAPS-0001-01, ANR-20-CE44-0013, ANR-20 CE92-0040),
576 Fondation ARC (ARCPJA32020060002137), and has benefited from a French State grant
577 (Saclay Plant Sciences, reference n° ANR-17-EUR-0007, EUR SPS-GSR) managed by the
578 French National Research Agency under an Investments for the Future program (reference n°
579 ANR-11-IDEX-0003-02) and the COST Action CA20113 ProteoCure.

580

581 **AUTHOR CONTRIBUTION**

582 TM and CG wrote the manuscript.

583

584 **CONFLICT OF INTEREST**

585 The authors declare no competing interests.

REFERENCES

Adam Z, Frottin F, Espagne C, Meinnel T, Giglione C. 2011. Interplay between N-terminal methionine excision and FtsH protease is essential for normal chloroplast development and function in Arabidopsis. *The Plant Cell* **23**, 3745-3760.

Aebersold R, Mann M. 2016. Mass-spectrometric exploration of proteome structure and function. *Nature* **537**, 347-355.

Aksnes H, Drazic A, Marie M, Arnesen T. 2016. First things first: vital protein marks by N-terminal acetyltransferases. *Trends in Biochemical Sciences* **41**, 746-760.

Alonso AM, Turowski VR, Ruiz DM, Orelo BD, Moresco JJ, Yates JR, 3rd, Corvi MM. 2019. Exploring protein myristoylation in *Toxoplasma gondii*. *Experimental Parasitology* **203**, 8-18.

Armbruster L, Linster E, Boyer JB, Brünje A, Eirich J, Stephan I, Bienvenut WV, Weidenhausen J, Meinnel T, Hell R, Sinning I, Finkemeier I, Giglione C, Wirtz M. 2020. NAA50 is an enzymatically active N(α)-acetyltransferase that is crucial for development and regulation of stress responses. *Plant Physiology* **183**, 1502-1516.

Aryal UK, McBride Z, Chen D, Xie J, Szymanski DB. 2017. Analysis of protein complexes in Arabidopsis leaves using size exclusion chromatography and label-free protein correlation profiling. *Journal of Proteomics* **166**, 8-18.

Aryal UK, Xiong Y, McBride Z, Kihara D, Xie J, Hall MC, Szymanski DB. 2014. A proteomic strategy for global analysis of plant protein complexes. *The Plant Cell* **26**, 3867-3882.

Baeza J, Smallegan MJ, Denu JM. 2015. Site-specific reactivity of nonenzymatic lysine acetylation. *ACS Chemical Biology* **10**, 122-128.

Baudisch B, Klösgen RB. 2012. Dual targeting of a processing peptidase into both endosymbiotic organelles mediated by a transport signal of unusual architecture. *Molecular Plant* **5**, 494-503.

Bayer M, Nawy T, Giglione C, Galli M, Meinnel T, Lukowitz W. 2009. Paternal control of embryonic patterning in *Arabidopsis thaliana*. *Science* **323**, 1485-1488.

Bhuiyan NH, Rowland E, Friso G, Ponnala L, Michel EJS, van Wijk KJ. 2020. Autocatalytic Processing and Substrate Specificity of *Arabidopsis* Chloroplast Glutamyl Peptidase. *Plant Physiology* **184**, 110-129.

Bienvenut WV, Brünje A, Boyer J-B, Mühlenbeck JS, Bernal G, Lassowskat I, Dian C, Linster E, Dinh TV, Koskela MM, Jung V, Seidel J, Schyrba LK, Ivanauskaite A, Eirich J, Hell R, Schwarzer D, Mulo P, Wirtz M, Meinnel T, Giglione C, Finkemeier I. 2020. Dual lysine and N-terminal acetyltransferases reveal the complexity underpinning protein acetylation. *Molecular Systems Biology* **16**, e9464.

Bienvenut WV, Espagne C, Martinez A, Majeran W, Valot B, Zivy M, Vallon O, Adam Z, Meinnel T, Giglione C. 2011. Dynamics of post-translational modifications and protein stability in the stroma of *Chlamydomonas reinhardtii* chloroplasts. *Proteomics* **11**, 1734-1750.

Bienvenut WV, Giglione C, Meinnel T. 2015. Proteome-wide analysis of the amino terminal status of *Escherichia coli* proteins at the steady-state and upon deformylation inhibition. *Proteomics* **15**, 2503-2518.

Bienvenut WV, Giglione C, Meinnel T. 2017. SILProNAQ: a convenient approach for proteome-wide analysis of protein N-termini and N-terminal acetylation quantitation. *Methods in Molecular Biology* **1574**, 17-34.

Bienvenut WV, Sumpton D, Martinez A, Lilla S, Espagne C, Meinnel T, Giglione C. 2012. Comparative large scale characterization of plant versus mammal proteins reveals similar and idiosyncratic N-alpha-acetylation features. *Molecular & Cellular Proteomics* **11**, M111 015131.

Blanc M, David F, Abrami L, Migliozi D, Armand F, Burgi J, van der Goot FG. 2015. SwissPalm: protein palmitoylation database. *F1000Research* **4**, 261.

Boisson B, Giglione C, Meinnel T. 2003. Unexpected protein families including cell defense components feature in the N-myristoylome of a higher eukaryote. *The Journal of Biological Chemistry* **278**, 43418-43429.

Bouchnak I, van Wijk KJ. 2019. N-degron pathways in plastids. *Trends in Plant Science* **24**, 917-926.

Boyle PC, Schwizer S, Hind SR, Kraus CM, De la Torre Diaz S, He B, Martin GB. 2016. Detecting N-myristoylation and S-acylation of host and pathogen proteins in plants using click chemistry. *Plant Methods* **12**, 38.

Broncel M, Dominicus C, Vignetti L, Nofal SD, Bartlett EJ, Touquet B, Hunt A, Wallbank BA, Federico S, Matthews S, Young JC, Tate EW, Tardieux I, Treeck M. 2020. Profiling of myristoylation in *Toxoplasma gondii* reveals an N-myristoylated protein important for host cell penetration. *eLife* **9**, e57861.

Bryant N, Lloyd J, Sweeney C, Myouga F, Meinke D. 2011. Identification of nuclear genes encoding chloroplast-localized proteins required for embryo development in *Arabidopsis*. *Plant Physiology* **155**, 1678-1689.

Bushell E, Gomes AR, Sanderson T, Anar B, Girling G, Herd C, Metcalf T, Modrzynska K, Schwach F, Martin RE, Mather MW, McFadden GI, Parts L, Rutledge GG, Vaidya AB, Wengelnik K, Rayner JC, Billker O. 2017. Functional profiling of a *Plasmodium* genome Reveals an abundance of essential genes. *Cell* **170**, 260-272.e268.

Carrie C, Venne AS, Zahedi RP, Soll J. 2015. Identification of cleavage sites and substrate proteins for two mitochondrial intermediate peptidases in *Arabidopsis thaliana*. *Journal of Experimental Botany* **66**, 2691-2708.

Castrec B, Dian C, Ciccone S, Ebert CL, Bienvenut WV, Le Caer J-P, Steyaert J-M, Giglione C, Meinel T. 2018. Structural and genomic decoding of human and plant myristoylomes reveals a definitive recognition pattern. *Nature Chemical Biology* **14**, 671-679.

Christian RW, Hewitt SL, Nelson G, Roalson EH, Dhingra A. 2020. Plastid transit peptides-where do they come from and where do they all belong? Multi-genome and pan-genomic assessment of chloroplast transit peptide evolution. *PeerJ* **8**, e9772.

Coffey MJ, Dagley LF, Seizova S, Kapp EA, Infusini G, Roos DS, Boddey JA, Webb AI, Tonkin CJ. 2018. Aspartyl protease 5 matures dense granule proteins that reside at the host-parasite interface in *Toxoplasma gondii*. *mBio* **9**, e01796-01718.

Cook RK, Sheff DR, Rubenstein PA. 1991. Unusual metabolism of the yeast actin amino terminus. *The Journal of Biological Chemistry* **266**, 16825-16833.

Davies MJ. 2005. The oxidative environment and protein damage. *Biochimica et Biophysica Acta* **1703**, 93-109.

Dinh TV, Bienvenut WV, Linster E, Feldman-Salit A, Jung VA, Meinel T, Hell R, Giglione C, Wirtz M. 2015. Molecular identification and functional characterization of the first Nalpha-acetyltransferase in plastids by global acetylome profiling. *Proteomics* **15**, 2426-2435.

Dirk LM, Williams MA, Houtz RL. 2001. Eukaryotic peptide deformylases. Nuclear-encoded and chloroplast-targeted enzymes in *Arabidopsis*. *Plant Physiology* **127**, 97-107.

Dissmeyer N. 2019. Conditional protein function via N-degron pathway-mediated proteostasis in stress physiology. *Annual Review of Plant Biology* **70**, 83-117.

Dogga SK, Mukherjee B, Jacot D, Kockmann T, Molino L, Hammoudi PM, Hartkoorn RC, Hehl AB, Soldati-Favre D. 2017. A druggable secretory protein maturase of *Toxoplasma* essential for invasion and egress. *eLife* **6**, e27480.

Drazic A, Aksnes H, Marie M, Boczkowska M, Varland S, Timmerman E, Foyn H, Glomnes N, Rebowski G, Impens F, Gevaert K, Dominguez R, Arnesen T. 2018. NAA80 is actin's N-terminal acetyltransferase and regulates cytoskeleton assembly and cell motility. *Proceedings of the National Academy of Sciences* **115**, 4399-4404.

Drazic A, Timmerman E, Kajan U, Marie M, Varland S, Impens F, Gevaert K, Arnesen T. 2022. The final maturation state of β -actin involves N-terminal acetylation by NAA80, not N-terminal arginylation by ATE1. *Journal of Molecular Biology* **434**, 167397.

Ebenezer TE, Zoltner M, Burrell A, Nenarokova A, Novák Vanclová AMG, Prasad B, Soukal P, Santana-Molina C, O'Neill E, Nankissoor NN, Vadakedath N, Daiker V, Obado S, Silva-Pereira S, Jackson AP, Devos DP, Lukeš J, Lebert M, Vaughan S, Hampl V, Carrington M, Ginger ML, Dacks JB, Kelly S, Field MC. 2019. Transcriptome, proteome and draft genome of *Euglena gracilis*. *BMC Biology* **17**, 11.

Ellis RJ. 1979. The most abundant protein in the world. *Trends in Biochemical Sciences* **4**, 241-244.

Ferrandez-Ayela A, Micol-Ponce R, Sanchez-Garcia AB, Alonso-Peral MM, Micol JL, Ponce MR. 2013. Mutation of an Arabidopsis NatB N-alpha-terminal acetylation complex component causes pleiotropic developmental defects. *PloS One* **8**, e80697.

Ferro M, Brugière S, Salvi D, Seigneurin-Berny D, Court M, Moyet L, Ramus C, Miras S, Mellal M, Le Gall S, Kieffer-Jaquinod S, Bruley C, Garin J, Joyard J, Masselon C, Rolland N. 2010. AT_CHLORO, a comprehensive chloroplast proteome database with subplastidial localization and curated information on envelope proteins. *Molecular & Cellular Proteomics* **9**, 1063-1084.

Flecken M, Wang H, Popilka L, Hartl FU, Bracher A, Hayer-Hartl M. 2020. Dual functions of a Rubisco activase in metabolic repair and recruitment to carboxysomes. *Cell* **183**, 457-473.

Forsberg J, Ström J, Kieselbach T, Larsson H, Alexciev K, Engström Å, Åkerlund H-E. 2005. Protease activities in the chloroplast capable of cleaving an LHCII N-terminal peptide. *Physiologia Plantarum* **123**, 21-29.

Frottin F, Espagne C, Traverso JA, Mauve C, Valot B, Lelarge-Trouverie C, Zivy M, Noctor G, Meinnel T, Giglione C. 2009. Cotranslational proteolysis dominates glutathione homeostasis to support proper growth and development. *The Plant Cell* **21**, 3296-3314.

Gibbs DJ, Bailey M, Tedds HM, Holdsworth MJ. 2016. From start to finish: amino-terminal protein modifications as degradation signals in plants. *The New Phytologist* **211**, 1188-1194.

Gibbs DJ, Tedds HM, Labandera AM, Bailey M, White MD, Hartman S, Sprigg C, Mogg SL, Osborne R, Dambire C, Boeckx T, Paling Z, Voesenek L, Flashman E, Holdsworth MJ. 2018. Oxygen-dependent proteolysis regulates the stability of angiosperm polycomb repressive complex 2 subunit VERNALIZATION 2. *Nature Communications* **9**, 5438.

Giglione C, Boularot A, Meinnel T. 2004. Protein N-terminal methionine excision. *Cellular and Molecular Life Sciences* **61**, 1455-1474.

Giglione C, Fieulaine S, Meinnel T. 2015. N-terminal protein modifications: bringing back into play the ribosome. *Biochimie* **114**, 134-146.

Giglione C, Meinnel T. 2001. Organellar peptide deformylases: universality of the N-terminal methionine cleavage mechanism. *Trends in Plant Science* **6**, 566-572.

Giglione C, Meinnel T. 2021. Evolution-driven versatility of N terminal acetylation in photoautotrophs. *Trends in Plant Science* **26**, 375-391.

Giglione C, Meinnel T. 2022. Mapping the myristoylome through a complete understanding of protein myristoylation biochemistry. *Progress in Lipid Research* **85**, 101139.

Giglione C, Pierre M, Meinnel T. 2000a. Peptide deformylase as a target for new generation, broad spectrum antimicrobial agents. *Molecular Microbiology* **36**, 1197-1205.

Giglione C, Serero A, Pierre M, Boisson B, Meinnel T. 2000b. Identification of eukaryotic peptide deformylases reveals universality of N-terminal protein processing mechanisms. *The EMBO Journal* **19**, 5916-5929.

Giglione C, Vallon O, Meinnel T. 2003. Control of protein life-span by N-terminal methionine excision. *The EMBO Journal* **22**, 13-23.

Gong X, Huang Y, Liang Y, Yuan Y, Liu Y, Han T, Li S, Gao H, Lv B, Huang X, Linster E, Wang Y, Wirtz M, Wang Y. 2022. OsHYPK-mediated protein N-terminal acetylation coordinates plant development and abiotic stress responses in rice. *Molecular Plant* **15**, 740-754.

Graciet E, Mesiti F, Wellmer F. 2010. Structure and evolutionary conservation of the plant N-end rule pathway. *The Plant Journal* **61**, 741-751.

Graciet E, Walter F, Ó'Maoiléidigh DS, Pollmann S, Meyerowitz EM, Varshavsky A, Wellmer F. 2009. The N-end rule pathway controls multiple functions during Arabidopsis shoot and leaf development. *Proceedings of the National Academy of Sciences of the United States of America* **106**, 13618-13623.

Hammarlund EU, Flashman E, Mohlin S, Licausi F. 2020. Oxygen-sensing mechanisms across eukaryotic kingdoms and their roles in complex multicellularity. *Science* **370**.

Hansen BK, Gupta R, Baldus L, Lyon D, Narita T, Lammers M, Choudhary C, Weinert BT. 2019. Analysis of human acetylation stoichiometry defines mechanistic constraints on protein regulation. *Nature Communications* **10**, 1055.

Hernández-Cuevas NA, Jhingan GD, Petropolis D, Vargas M, Guillen N. 2019. Acetylation is the most abundant actin modification in *Entamoeba histolytica* and modifications of actin's amino-terminal domain change cytoskeleton activities. *Cellular Microbiology* **21**, e12983.

Hinttala R, Sasarman F, Nishimura T, Antonicka H, Brunel-Guitton C, Schwartzenruber J, Fahiminiya S, Majewski J, Faubert D, Ostergaard E, Smeitink JA, Shoubridge EA. 2015. An N-terminal formyl methionine on COX 1 is required for the assembly of cytochrome c oxidase. *Human Molecular Genetics* **24**, 4103-4113.

Holdsworth MJ, Gibbs DJ. 2020. Comparative Biology of Oxygen Sensing in Plants and Animals. *Current Biology* **30**, R362-r369.

Hopkins JF, Spencer DF, Laboissiere S, Neilson JAD, Eveleigh RJM, Durnford DG, Gray MW, Archibald JM. 2012. Proteomics reveals plastid- and periplastid-targeted proteins in the chlorarachniophyte alga *Bigeloviella natans*. *Genome Biology and Evolution* **4**, 1391-1406.

Houtz RL, Magnani R, Nayak NR, Dirk LM. 2008. Co- and post-translational modifications in Rubisco: unanswered questions. *Journal of Experimental Botany* **59**, 1635-1645.

Houtz RL, Poneleit L, Jones SB, Royer M, Stults JT. 1992. Posttranslational Modifications in the Amino- Terminal Region of the Large Subunit of Ribulose- 1,5-Bisphosphate Carboxylase/Oxygenase from Several Plant Species. *Plant Physiology* **98**, 1170-1174.

Huang S, Nelson CJ, Li L, Taylor NL, Ströher E, Peteriet J, Millar AH. 2015. INTERMEDIATE CLEAVAGE PEPTIDASE55 Modifies Enzyme Amino Termini and Alters Protein Stability in Arabidopsis Mitochondria. *Plant Physiology* **168**, 415-427.

Huang S, Taylor NL, Whelan J, Millar AH. 2009. Refining the definition of plant mitochondrial presequences through analysis of sorting signals, N-terminal modifications, and cleavage motifs. *Plant Physiology* **150**, 1272-1285.

Huber M, Bienvenut WV, Linster E, Stephan I, Armbruster L, Sticht C, Layer DC, Lapouge K, Meinnel T, Sinning I, Giglione C, Hell R, Wirtz M. 2020. NatB-mediated N-terminal acetylation affects growth and abiotic stress responses. *Plant Physiology* **182**, 792-806.

Huesgen PF, Alami M, Lange PF, Foster LJ, Schroder WP, Overall CM, Green BR. 2013. Proteomic amino-terminal profiling reveals targeting information for protein import into complex plastids. *PLoS One* **8**, e74483.

Inoue K, Baldwin AJ, Shipman RL, Matsui K, Theg SM, Ohme-Takagi M. 2005. Complete maturation of the plastid protein translocation channel requires a type I signal peptidase. *The Journal of Cell Biology* **171**, 425-430.

Jacques S, Ghesquière B, De Bock PJ, Demol H, Wahni K, Willems P, Messens J, Van Breusegem F, Gevaert K. 2015. Protein methionine sulfoxide dynamics in *Arabidopsis thaliana* under oxidative stress. *Molecular & Cellular Proteomics* **14**, 1217-1229.

Kallemeijn WW, Lanyon-Hogg T, Panyain N, Goya Grocin A, Ciepla P, Morales-Sanfrutos J, Tate EW. 2021. Proteome-wide analysis of protein lipidation using chemical probes: in-gel fluorescence visualization, identification and quantification of N-myristoylation, N- and S-acylation, O-cholesterylation, S-farnesylation and S-geranylgeranylation. *Nature Protocols* **16**, 5083-5122.

Kmiec B, Glaser E. 2012. A novel mitochondrial and chloroplast peptidasome, PreP. *Physiologia Plantarum* **145**, 180-186.

Lange PF, Huesgen PF, Nguyen K, Overall CM. 2014. Annotating N termini for the human proteome project: N termini and N α -acetylation status differentiate stable cleaved protein species from degradation remnants in the human erythrocyte proteome. *Journal of Proteome Research* **13**, 2028-2044.

Lee ES, Park JH, Wi SD, Kang CH, Chi YH, Chae HB, Paeng SK, Ji MG, Kim WY, Kim MG, Yun DJ, Stacey G, Lee SY. 2021. Redox-dependent structural switch and CBF activation confer freezing tolerance in plants. *Nature Plants*.

Lensch M, Herrmann RG, Sokolenko A. 2001. Identification and characterization of SppA, a novel light-inducible chloroplast protease complex associated with thylakoid membranes. *The Journal of Biological Chemistry* **276**, 33645-33651.

Li YR, Liu MJ. 2020. Prevalence of alternative AUG and non-AUG translation initiators and their regulatory effects across plants. *Genome Research* **30**, 1418-1433.

Lindahl AJ, Lawton AJ, Baeza J, Dowell JA, Denu JM. 2019. Site-specific lysine acetylation stoichiometry across subcellular compartments. *Methods in Molecular Biology* **1983**, 79-106.

Linster E, Forero Ruiz FL, Miklankova P, Ruppert T, Mueller J, Armbruster L, Gong X, Serino G, Mann M, Hell R, Wirtz M. 2022. Cotranslational N-degron masking by acetylation promotes proteome stability in plants. *Nature Communications* **13**, 810.

Linster E, Layer D, Bienvenut WV, Dinh TV, Weyer FA, Leemhuis W, Brünje A, Hoffrichter M, Miklankova P, Kopp J, Lapouge K, Sindlinger J, Schwarzer D, Meinnel T, Finkemeier I, Giglione C, Hell R, Sinning I, Wirtz M. 2020. The Arabidopsis N α -acetyltransferase NAA60 locates to the plasma membrane and is vital for the high salt stress response. *The New Phytologist* **228**, 554-569.

Linster E, Stephan I, Bienvenut WV, Maple-Grodem J, Myklebust LM, Huber M, Reichelt M, Sticht C, Geir Moller S, Meinnel T, Arnesen T, Giglione C, Hell R, Wirtz M. 2015. Downregulation of N-terminal acetylation triggers ABA-mediated drought responses in Arabidopsis. *Nature Communications* **6**, 7640.

Liu YD, Goetze AM, Bass RB, Flynn GC. 2011. N-terminal glutamate to pyroglutamate conversion in vivo for human IgG2 antibodies. *The Journal of Biological Chemistry* **286**, 11211-11217.

Lynch M, Field MC, Goodson HV, Malik HS, Pereira-Leal JB, Roos DS, Turkewitz AP, Sazer S. 2014. Evolutionary cell biology: two origins, one objective. *Proceedings of the National Academy of Sciences of the United States of America* **111**, 16990-16994.

Majeran W, Le Caer JP, Ponnala L, Meinnel T, Giglione C. 2018. Targeted profiling of *A. thaliana* sub-proteomes illuminates new co- and post-translationally N-terminal myristoylated proteins. *The Plant Cell* **30**, 543-562.

Meinzel T. 2022. Tracking N-terminal protein processing from the Golgi to the chromatophore of a rhizarian amoeba. *Plant Physiology* **in press**, [10.1093/plphys/kiac173](https://doi.org/10.1093/plphys/kiac173).

Meinzel T, Dian C, Giglione C. 2020. Myristoylation, an ancient protein modification mirroring eukaryogenesis and evolution. *Trends in Biochemical Sciences* **45**, 619-632.

Meinzel T, Giglione C. 2008. Tools for analyzing and predicting N-terminal protein modifications. *Proteomics* **8**, 626-649.

Meinzel T, Peynot P, Giglione C. 2005. Processed N-termini of mature proteins in higher eukaryotes and their major contribution to dynamic proteomics. *Biochimie* **87**, 701-712.

Miklánková P, Linster E, Boyer JB, Weidenhausen J, Mueller J, Armbruster L, Lapouge K, De La Torre C, Bienvenut W, Sticht C, Mann M, Meinzel T, Sinning I, Giglione C, Hell R, Wirtz M. 2022. HYPK promotes the activity of the essential N α -acetyltransferase A complex to determine proteostasis of nonAc-X²/N-degron containing proteins. *Science Advances* **in press**.

Millar AH, Heazlewood JL, Giglione C, Holdsworth MJ, Bachmair A, Schulze WX. 2019. The scope, functions, and dynamics of posttranslational protein modifications. *Annual Review of Plant Biology* **70**, 119-151.

Moon S, Giglione C, Lee DY, An S, Jeong DH, Meinzel T, An G. 2008. Rice peptide deformylase PDF1B is crucial for development of chloroplasts. *Plant and Cell Physiology* **49**, 1536-1546.

Murphy AS, Hoogner KR, Peer WA, Taiz L. 2002. Identification, purification, and molecular cloning of N-1-naphthylphthalamic acid-binding plasma membrane-associated aminopeptidases from Arabidopsis. *Plant Physiology* **128**, 935-950.

Na CH, Barbhuiya MA, Kim MS, Verbruggen S, Eacker SM, Pletnikova O, Troncoso JC, Halushka MK, Menschaert G, Overall CM, Pandey A. 2018. Discovery of noncanonical translation initiation sites through mass spectrometric analysis of protein N termini. *Genome Research* **28**, 25-36.

Nakai A, Yamauchi Y, Sumi S, Tanaka K. 2012. Role of acylamino acid-releasing enzyme/oxidized protein hydrolase in sustaining homeostasis of the cytoplasmic antioxidative system. *Planta* **236**, 427-436.

Nyonda AM, Boyer J-B, Belmudes L, Krishnan A, Pino P, Couté Y, Brochet M, Meinel T, Soldati-Favre D, Giglione C. 2022. N-Acetylation of secreted proteins is widespread in Apicomplexa and independent of acetyl-CoA transporter AT1. *Journal of Cell Science* **in press**.

O'Leary BM, Scafaro AP, Fenske R, Duncan O, Ströher E, Petereit J, Millar AH. 2020. Rubisco lysine acetylation occurs at very low stoichiometry in mature Arabidopsis leaves: implications for regulation of enzyme function. *The Biochemical Journal* **477**, 3885-3896.

Oberleitner L, Perrar A, Macorano L, Huesgen PF, Nowack ECM. 2022. A bipartite chromatophore transit peptide and N-terminal protein processing in the Paulinella chromatophore. *Plant Physiology* **189**, 152-164.

Park SY, Scranton MA, Stajich JE, Yee A, Walling LL. 2017. Chlorophyte aspartyl aminopeptidases: Ancient origins, expanded families, new locations, and secondary functions. *PloS One* **12**, e0185492.

Parker CE, Warren Hines MRE, Mocanu V, Greer SF, Borchers CH. 2019. Mass spectrometric determination of protein ubiquitination. *Methods in Molecular Biology* **1934**, 191-221.

Perrar A, Dissmeyer N, Huesgen PF. 2019. New beginnings and new ends: methods for large-scale characterization of protein termini and their use in plant biology. *Journal of Experimental Botany* **70**, 2021-2038.

Pesaresi P, Gardner NA, Masiero S, Dietzmann A, Eichacker L, Wickner R, Salamini F, Leister D. 2003. Cytoplasmic N-terminal protein acetylation is required for efficient photosynthesis in Arabidopsis. *The Plant Cell* **15**, 1817-1832.

Pierre M, Traverso JA, Boisson B, Domenichini S, Bouchez D, Giglione C, Meinel T. 2007. N-Myristoylation regulates the SnRK1 pathway in Arabidopsis. *The Plant Cell* **19**, 2804-2821.

Pletnev PI, Shulenina O, Evfratov S, Treshin V, Subach MF, Serebryakova MV, Osterman IA, Paleskava A, Bogdanov AA, Dontsova OA, Konevega AL, Sergiev PV. 2022. Ribosomal protein S18 acetyltransferase RimI is responsible for the acetylation of elongation factor Tu. *The Journal of Biological Chemistry* **298**, 101914.

Poulard C, Treilleux I, Lavergne E, Bouchekioua-Bouzaghrou K, Goddard-Léon S, Chabaud S, Trédan O, Corbo L, Le Romancer M. 2012. Activation of rapid oestrogen signalling in aggressive human breast cancers. *EMBO Molecular Medicine* **4**, 1200-1213.

Prus G, Hoegl A, Weinert BT, Choudhary C. 2019. Analysis and interpretation of protein post-translational modification site stoichiometry. *Trends in Biochemical Sciences* **44**, 943-960.

Qi Q, Rajala RV, Anderson W, Jiang C, Rozwadowski K, Selvaraj G, Sharma R, Datla R. 2000. Molecular cloning, genomic organization, and biochemical characterization of myristoyl-CoA:protein N-myristoyltransferase from *Arabidopsis thaliana*. *The Journal of Biological Chemistry* **275**, 9673-9683.

Radakovits R, Jinkerson RE, Fuerstenberg SI, Tae H, Settlage RE, Boore JL, Posewitz MC. 2012. Draft genome sequence and genetic transformation of the oleaginous alga *Nannochloropsis gaditana*. *Nature Communications* **3**, 686.

Raven JA. 2013. Rubisco: still the most abundant protein of Earth? *The New Phytologist* **198**, 1-3.

Redman K, Rubenstein PA. 1981. NH₂-terminal processing of Dictyostelium discoideum actin in vitro. *The Journal of Biological Chemistry* **256**, 13226-13229.

Redman KL, Martin DJ, Korn ED, Rubenstein PA. 1985. Lack of NH₂-terminal processing of actin from *Acanthamoeba castellanii*. *The Journal of Biological Chemistry* **260**, 14857-14861.

Reid DW, Nicchitta CV. 2015. Diversity and selectivity in mRNA translation on the endoplasmic reticulum. *Nature Reviews Molecular Cell Biology* **16**, 221-231.

- Renna L, Stefano G, Majeran W, Micalella C, Meinnel T, Giglione C, Brandizzi F.** 2013. Golgi traffic and integrity depend on N-myristoyl transferase-1 in *Arabidopsis*. *The Plant Cell* **25**, 1756-1773.
- Richter S, Lamppa GK.** 1998. A chloroplast processing enzyme functions as the general stromal processing peptidase. *Proceedings of the National Academy of Sciences of the United States of America* **95**, 7463-7468.
- Richter S, Lamppa GK.** 2002. Determinants for removal and degradation of transit peptides of chloroplast precursor proteins. *The Journal of Biological Chemistry* **277**, 43888-43894.
- Richter S, Zhong R, Lamppa G.** 2005. Function of the stromal processing peptidase in the chloroplast import pathway. *Physiologia Plantarum* **123**, 362-368.
- Ross S, Giglione C, Pierre M, Espagne C, Meinnel T.** 2005. Functional and developmental impact of cytosolic protein N-terminal methionine excision in *Arabidopsis*. *Plant Physiology* **137**, 623-637.
- Rouhier N, Vieira Dos Santos C, Tarrago L, Rey P.** 2006. Plant methionine sulfoxide reductase A and B multigenic families. *Photosynthesis Research* **89**, 247-262.
- Rowland E, Kim J, Bhuiyan NH, van Wijk KJ.** 2015. The *Arabidopsis* chloroplast stromal N-terminome: complexities of amino-terminal protein maturation and stability. *Plant Physiology* **169**, 1881-1896.
- Rubenstein PA, Martin DJ.** 1983. NH₂-terminal processing of *Drosophila melanogaster* actin. Sequential removal of two amino acids. *The Journal of Biological Chemistry* **258**, 11354-11360.
- Schilling S, Stenzel I, von Bohlen A, Wermann M, Schulz K, Demuth HU, Wasternack C.** 2007. Isolation and characterization of the glutaminyl cyclases from *Solanum tuberosum* and *Arabidopsis thaliana*: implications for physiological functions. *Biological Chemistry* **388**, 145-153.
- Schilling S, Wasternack C, Demuth HU.** 2008. Glutaminyl cyclases from animals and plants: a case of functionally convergent protein evolution. *Biological Chemistry* **389**, 983-991.

Serero A, Giglione C, Meinel T. 2001. Distinctive features of the two classes of eukaryotic peptide deformylases. *Journal of Molecular Biology* **314**, 695-708.

Sheff DR, Rubenstein PA. 1992. Isolation and characterization of the rat liver actin N-acetylaminopeptidase. *The Journal of Biological Chemistry* **267**, 20217-20224.

Sheiner L, Soldati-Favre D. 2008. Protein trafficking inside *Toxoplasma gondii*. *Traffic* **9**, 636-646.

Shipman-Roston RL, Ruppel NJ, Damoc C, Phinney BS, Inoue K. 2010. The significance of protein maturation by plastidic type I signal peptidase 1 for thylakoid development in *Arabidopsis* chloroplasts. *Plant Physiology* **152**, 1297-1308.

Stahl A, Moberg P, Ytterberg J, Panfilov O, Brockenhuus Von Lowenhielm H, Nilsson F, Glaser E. 2002. Isolation and identification of a novel mitochondrial metalloprotease (PreP) that degrades targeting presequences in plants. *The Journal of Biological Chemistry* **277**, 41931-41939.

Suazo KF, Park KY, Distefano MD. 2021. A not-so-ancient grease history: click chemistry and protein lipid modifications. *Chemical Reviews* **121**, 7178-7248.

Tabita FR, Satagopan S, Hanson TE, Kreel NE, Scott SS. 2008. Distinct form I, II, III, and IV Rubisco proteins from the three kingdoms of life provide clues about Rubisco evolution and structure/function relationships. *Journal of Experimental Botany* **59**, 1515-1524.

Tamura T, Asakura T, Uemura T, Ueda T, Terauchi K, Misaka T, Abe K. 2008. Signal peptide peptidase and its homologs in *Arabidopsis thaliana*— plant tissue-specific expression and distinct subcellular localization. *The FEBS Journal* **275**, 34-43.

Tarrago L, Laugier E, Rey P. 2009. Protein-repairing methionine sulfoxide reductases in photosynthetic organisms: gene organization, reduction mechanisms, and physiological roles. *Molecular Plant* **2**, 202-217.

Teixeira PF, Kmiec B, Branca RM, Murcha MW, Byzia A, Ivanova A, Whelan J, Drag M, Lehtiö J, Glaser E. 2017. A multi-step peptidolytic cascade for amino acid recovery in chloroplasts. *Nature Chemical Biology* **13**, 15-17.

Tonkin CJ, Kalanon M, McFadden GI. 2008. Protein targeting to the malaria parasite plastid. *Traffic* **9**, 166-175.

Traverso JA, Giglione C, Meinnel T. 2013a. High-throughput profiling of N-myristoylation substrate specificity across species including pathogens. *Proteomics* **13**, 25-36.

Traverso JA, Micaella C, Martinez A, Brown SC, Satiat-Jeunemaitre B, Meinnel T, Giglione C. 2013b. Roles of N-Terminal fatty acid acylations in membrane compartment partitioning: Arabidopsis h-type thioredoxins as a case study. *The Plant Cell* **25**, 1056-1077.

Tripathi LP, Sowdhamini R. 2006. Cross genome comparisons of serine proteases in Arabidopsis and rice. *BMC Genomics* **7**, 200.

Tsiatsiani L, Stael S, Van Damme P, Van Breusegem F, Gevaert K. 2014. Preparation of Arabidopsis thaliana seedling proteomes for identifying metacaspase substrates by N-terminal COFRADIC. *Methods in Molecular Biology* **1133**, 255-261.

Tsiatsiani L, Timmerman E, De Bock PJ, Vercammen D, Stael S, van de Cotte B, Staes A, Goethals M, Beunens T, Van Damme P, Gevaert K, Van Breusegem F. 2013. The Arabidopsis metacaspase9 degradome. *The Plant Cell* **25**, 2831-2847.

Tsuji A, Fujisawa Y, Mino T, Yuasa K. 2011. Identification of a plant aminopeptidase with preference for aromatic amino acid residues as a novel member of the prolyl oligopeptidase family of serine proteases. *Journal of Biochemistry* **150**, 525-534.

Van Damme P, Evjenth R, Foyn H, Demeyer K, De Bock PJ, Lillehaug JR, Vandekerckhove J, Arnesen T, Gevaert K. 2011. Proteome-derived peptide libraries allow detailed analysis of the substrate specificities of N(alpha)-acetyltransferases and point to hNaa10p as the post-translational actin N(alpha)-acetyltransferase. *Molecular & Cellular Proteomics* **10**, M110 004580.

Van Damme P, Lasa M, Polevoda B, Gazquez C, Elosegui-Artola A, Kim DS, De Juan-Pardo E, Demeyer K, Hole K, Larrea E, Timmerman E, Prieto J, Arnesen T, Sherman F, Gevaert K, Aldabe R. 2012. N-terminal acetylome analyses and functional insights of the N-terminal acetyltransferase NatB. *Proceedings of the National Academy of Sciences of the United States of America* **109**, 12449-12454.

van Dooren GG, Striepen B. 2013. The algal past and parasite present of the apicoplast. *Annual Review of Microbiology* **67**, 271-289.

van Dooren GG, Su V, D'Ombra MC, McFadden GI. 2002. Processing of an apicoplast leader sequence in *Plasmodium falciparum* and the identification of a putative leader cleavage enzyme. *The Journal of Biological Chemistry* **277**, 23612-23619.

Varland S, Vandekerckhove J, Drazic A. 2019. Actin post-translational modifications: the Cinderella of cytoskeletal control. *Trends in Biochemical Sciences* **44**, 502-516.

Varshavsky A. 2019. N-degron and C-degron pathways of protein degradation. *Proceedings of the National Academy of Sciences* **116**, 358-366.

Venne AS, Solari FA, Faden F, Paretti T, Dissmeyer N, Zahedi RP. 2015. An improved workflow for quantitative N-terminal charge-based fractional diagonal chromatography (ChaFRADIC) to study proteolytic events in *Arabidopsis thaliana*. *Proteomics* **15**, 2458-2469.

Vicente J, Mendiondo GM, Pauwels J, Pastor V, Izquierdo Y, Naumann C, Movahedi M, Rooney D, Gibbs DJ, Smart K, Bachmair A, Gray JE, Dissmeyer N, Castresana C, Ray RV, Gevaert K, Holdsworth MJ. 2019. Distinct branches of the N-end rule pathway modulate the plant immune response. *The New Phytologist* **221**, 988-1000.

Wakaguri H, Suzuki Y, Sasaki M, Sugano S, Watanabe J. 2009. Inconsistencies of genome annotations in apicomplexan parasites revealed by 5'-end-one-pass and full-length sequences of oligo-capped cDNAs. *BMC Genomics* **10**, 312.

Walling LL. 2006. Recycling or regulation? The role of amino-terminal modifying enzymes. *Current Opinion in Plant Biology* **9**, 227-233.

Weits DA, Giuntoli B, Kosmacz M, Parlanti S, Hubberten HM, Riegler H, Hoefgen R, Perata P, van Dongen JT, Licausi F. 2014. Plant cysteine oxidases control the oxygen-dependent branch of the N-end-rule pathway. *Nature Communications* **5**, 3425.

Weits DA, Kunkowska AB, Kamps NCW, Portz KMS, Packbier NK, Nemeček Z, Gailloch C, Lohmann JU, Pedersen O, van Dongen JT, Licausi F. 2019. An apical hypoxic niche sets the pace of shoot meristem activity. *Nature* **569**, 714-717.

Weng SSH, Demir F, Ergin EK, Dirnberger S, Uzozie A, Tuscher D, Nierves L, Tsui J, Huesgen PF, Lange PF. 2019. Sensitive determination of proteolytic proteoforms in limited microscale proteome samples. *Molecular & Cellular Proteomics* **18**, 2335-2347.

Wetzel CM, Harmacek LD, Yuan LH, Wopereis JL, Chubb R, Turini P. 2009. Loss of chloroplast protease SPPA function alters high light acclimation processes in *Arabidopsis thaliana* L. (Heynh.). *Journal of Experimental Botany* **60**, 1715-1727.

White MD, Klecker M, Hopkinson RJ, Weits DA, Mueller C, Naumann C, O'Neill R, Wickens J, Yang J, Brooks-Bartlett JC, Garman EF, Grossmann TN, Dissmeyer N, Flashman E. 2017. Plant cysteine oxidases are dioxygenases that directly enable arginyl transferase-catalysed arginylation of N-end rule targets. *Nature Communications* **8**, 14690.

Wilson RJ, Denny PW, Preiser PR, Rangachari K, Roberts K, Roy A, Whyte A, Strath M, Moore DJ, Moore PW, Williamson DH. 1996. Complete gene map of the plastid-like DNA of the malaria parasite *Plasmodium falciparum*. *Journal of Molecular Biology* **261**, 155-172.

Xu F, Huang Y, Li L, Gannon P, Linster E, Huber M, Kapos P, Bienvenut W, Polevoda B, Meinnel T, Hell R, Giglione C, Zhang Y, Wirtz M, Chen S, Li X. 2015. Two N-terminal acetyltransferases antagonistically regulate the stability of a nod-like receptor in *Arabidopsis*. *The Plant Cell* **27**, 1547-1562.

Yamaguchi K, Subramanian AR. 2000. The plastid ribosomal proteins. Identification of all the proteins in the 50 S subunit of an organelle ribosome (chloroplast). *The Journal of Biological Chemistry* **275**, 28466-28482.

Yamauchi Y, Ejiri Y, Toyoda Y, Tanaka K. 2003. Identification and biochemical characterization of plant acylamino acid-releasing enzyme. *Journal of Biochemistry* **134**, 251-257.

Ying Z, Mulligan RM, Janney N, Houtz RL. 1999. Rubisco small and large subunit N-methyltransferases. Bi- and mono-functional methyltransferases that methylate the small and large subunits of Rubisco. *The Journal of Biological Chemistry* **274**, 36750-36756.

Yoon HS, Hackett JD, Van Dolah FM, Nosenko T, Lidie KL, Bhattacharya D. 2005. Tertiary endosymbiosis driven genome evolution in dinoflagellate algae. *Molecular Biology and Evolution* **22**, 1299-1308.

Yoshida S, Ito M, Callis J, Nishida I, Watanabe A. 2002. A delayed leaf senescence mutant is defective in arginyl-tRNA:protein arginyltransferase, a component of the N-end rule pathway in *Arabidopsis*. *The Plant Journal* **32**, 129-137.

Zahn-Zabal M, Michel PA, Gateau A, Nikitin F, Schaeffer M, Audot E, Gaudet P, Duek PD, Teixeira D, Rech de Laval V, Samarasinghe K, Bairoch A, Lane L. 2020. The neXtProt knowledgebase in 2020: data, tools and usability improvements. *Nucleic Acids Research* **48**, D328-d334.

Zhang H, Deery MJ, Gannon L, Powers SJ, Lilley KS, Theodoulou FL. 2015. Quantitative proteomics analysis of the Arg/N-end rule pathway of targeted degradation in *Arabidopsis* roots. *Proteomics* **15**, 2447-2457.

Zhang H, Gannon L, Hassall KL, Deery MJ, Gibbs DJ, Holdsworth MJ, van der Hoorn RAL, Lilley KS, Theodoulou FL. 2018. N-terminomics reveals control of *Arabidopsis* seed storage proteins and proteases by the Arg/N-end rule pathway. *The New Phytologist* **218**, 1106-1126.

Zybilov B, Rutschow H, Friso G, Rudella A, Emanuelsson O, Sun Q, van Wijk KJ. 2008. Sorting signals, N-terminal modifications and abundance of the chloroplast proteome. *PloS One* **3**, e1994.

588 TABLES

589 Table 1. The amino terminal proteolytic processing machinery of plastid-containing organisms

Aminopeptidase	BRENDA category	Entry TAIR	Gene Name UniProt	Cleavage specificity	Locali- zation	References	Strame- nopiles	Rhiza- ria	Apicom- plexa
Organelar									
<i>Presequence processing</i>									
Chloroplast processing peptidase	3.4.21.89	At3g24590	PLSP1	Processing of some plastid-targeted proteins including OE33 & Toc75	C	(Inoue <i>et al.</i> , 2005; Shipman-Roston <i>et al.</i> , 2010)	-		
Presequence protease 1	3.4.24.-	At3g19170	PREP1	X(10-65)RR (LFY)/(SAV)(ST A)	C/M	(Huang <i>et al.</i> , 2009; Kmiec and Glaser, 2012; Stahl <i>et al.</i> , 2002)	-		
Presequence protease 2		At1g49630	PREP2						
Stromal processing peptidase	3.4.21.102	At5g42390	SPP	Presequence rich in S and T	C	(Richter and Lamppa, 1998, 2002; Richter <i>et al.</i> , 2005)	Naga_100079g9	-	TGME49_035680
Serine protease SPPA, chloroplastic	3.4.21.-	At1g73990	SPPA	Degradation of antenna and PSII	C	(Lensch <i>et al.</i> , 2001; Wetzal <i>et al.</i> , 2009)	Naga_100001g124	B1X5C9	
Aminopeptidase P, prolidase	3.4.11.26	At4g29490		?RX(FY)/(AS)??	C	(Aryal <i>et al.</i> , 2014; Huang <i>et al.</i> , 2015)			
Mitochondrial-processing peptidase subunit alpha	3.4.24.64	At3g16480	MMPA 2	Might have no protease activity (lacks one conserved zinc-binding site)	C/M	(Baudisch and Klösigen, 2012)	Naga_100011g96, Naga_100003g161		
		At1g51980	MMPA 1		M		(Carrie <i>et al.</i> , 2015)	Naga_100066g1	
Mitochondrial-processing peptidase subunit beta		At3g02090	MPPB		M		NGA_016780, Naga_100054g10		

Intermediate cleaving peptidase 55, Xaa-Pro dipeptidase	3.4.13.9	At1g09300	ICP55	RX(FY)/(AS)	M	(Carrie <i>et al.</i> , 2015; Huang <i>et al.</i> , 2015)		B1X3Z2	
Mitochondrial intermediate peptidase	3.4.24.-	At5g51540	OCT1	S(AS)/A	M	(Carrie <i>et al.</i> , 2015)	Naga_100005g90		
<i>Peptide deformylation</i>									
Peptide deformylase 1B	3.5.1.88	At5g14660	PDF1B	f/MX	C/M	(Dirk <i>et al.</i> , 2001; Giglione <i>et al.</i> , 2000b)	Naga_100009g109	B1X553	TGME49_016700
Peptide deformylase 1A		At1g15390	PDF1A	f/MX	C/M				
<i>N-terminal Methionine cleavage</i>									
Methionine aminopeptidase 1C	3.4.11.18	At1g13270	MAP1B [*]	M/(AGPTVR)([^] P)	C	(Giglione <i>et al.</i> , 2000b)	Naga_100084g2	B1X3G2	TGME49_057730, TGME49_211330
Methionine aminopeptidase 1B		At3g25740	MAP1C [*]	M/(AGPTV))	C/M				
Methionine aminopeptidase 1D		At4g37040	MAP1D	M/(AGPTVN)	C/M				
<i>N-terminal processing mono- or di- aminopeptidases</i>									
Puromycin-sensitive aminopeptidase	3.4.11.14	At1g63770	PSA	R>AGILMK/X	C/M	(Teixeira <i>et al.</i> , 2017)	Naga_100111g8	g3466.tl	
Leucine aminopeptidase 3	3.4.11.5	At4g30910	LAP3	ML>FWY/X	C/M	(Teixeira <i>et al.</i> , 2017)	Naga_100065g23		
Leucine aminopeptidase 2		At4g30920	LAP2		C/M				
Aspartyl aminopeptidase	3.4.11.7	At5g04710	DAP2	(DE)/X	C/M	(Park <i>et al.</i> , 2017; Teixeira <i>et al.</i> , 2017)	Naga_100236g6		
Aminopeptidase P2	3.4.11.9	At3g05350	AMPP2	X/P?	C? cytosol(Aryal <i>et al.</i> , 2014)	(Ferro <i>et al.</i> , 2010; Murphy <i>et al.</i> , 2002)	Naga_100013g76		
Tyrosyl aminopeptidase	3.4.11.x	At5g36210	MAB16	(YFM)/X	C	(Tsuji <i>et al.</i> , 2011)	NGA_0474200		TGME49_246800

Prolyl endopeptidase	3.4.21.-	At1g76140		X(P>A)/X	C/M	(Tripathi and Sowdhamini, 2006)	Naga_100093g9		
Acylamino-acid-releasing enzyme	3.4.19.1	At4g14570.1	AARE	AcX/X	C	(Yamauchi <i>et al.</i> , 2003; Zybaïlov <i>et al.</i> , 2008)	-		
Glutamyl endopeptidase	3.4.21.-	At2g47390	CGEP	PE/X	C	(Bhuiyan <i>et al.</i> , 2020; Forsberg <i>et al.</i> , 2005)	-		
Cytosolic									
<i>Presequence processing</i>									
Signal peptide peptidase	3.4.23.B2	At2g03120	SPP	Cleaves type II membrane signal peptides in the hydrophobic plane of the membrane	ER	(Tamura <i>et al.</i> , 2008)	Naga_100019g45		TGME49_037150
Signal peptide peptidase-like 1		At4g33410	SPPL1		Endosome		Naga_100077g7		
Signal peptide peptidase-like 2		At1g63690	SPPL2						
Signal peptide peptidase-like 3		At2g43070	SPPL3						
Signal peptide peptidase-like 4		At1g01650	SPPL4						
Signal peptide peptidase-like 5		At1g05820	SPPL5						
Signal peptidase I complex subunit SEC11	3.4.21.89	At1g52600	SPC18	Removes signal peptides from nascent proteins as they are translocated into the lumen of the endoplasmic reticulum	ER MB			Naga_100086g8	
		At3g15710							
Signal peptidase complex subunit 3A		At3g05230	SPC22				Naga_100105g6		
Signal peptidase complex subunit 3B		At5g27430	SPC23						
Signal peptidase complex subunit 2		At2g39960	SPC25				Naga_100222g1		
	At4g04200								

Signal peptidase complex subunit 1		At2g22425	SPC12				-		
<i>N-terminal Methionine cleavage</i>									
Methionine aminopeptidase 1A		At2g45240	MAP1A	M/(AGPTVR)([^] P)			Naga_100013g54		TGME49_048850
Methionine aminopeptidase 2A	3.4.11.18	At2g44180	MAP2A	M/(AGPTV)		(Gigliane <i>et al.</i> , 2000b; Ross <i>et al.</i> , 2005)	Naga_100004g92		TGME49_105460
Methionine aminopeptidase 2B		At3g59990	MAP2B						
<i>N-terminal processing mono- or di- aminopeptidases</i>									
Pyroglutamyl peptidase	3.4.19.-	At1g56700	PGP1	Glp [£] /peptide			No but in most Ochrophyta		TGME49_268280
		At1g23440	PGP2						
Aspartyl aminopeptidase	3.4.11.7	At5g60160	DAP1					g40631.t1	
X-Pro dipeptidase	3.4.13.9	At4g29500			C		Naga_100025g65		
Aminopeptidase M1	3.4.11.2	At4g33090	APM1	A/X	C		Naga_100070g24	g54899.t1	
Aminopeptidase P1	3.4.11.9	At4g36760	AMPP1	Y/X	Mb	(Murphy <i>et al.</i> , 2002)	Naga_100013g76		
Leucine aminopeptidase 1	3.4.11.-	At2g24200	AMPL1				Naga_100005g129		
Leucine aminopeptidase	3.4.11.-	At5g13520	LKHA4	cleaves only di or tri peptides			Naga_100009g11		
Dipeptidyl peptidase IV	3.4.21.-	At5g24260	MOP9.8	XP/Y	C	(Tripathi and Sowdhamini, 2006)	-	g69768.t1	
Prolyl endopeptidase	3.4.21.-	At1g20380			C		Naga_100093g9		
Acylamino-acid-releasing enzyme	3.4.19.1	At4g14570	AARE	AcX/X	C	(Aryal <i>et al.</i> , 2017; Nakai <i>et al.</i> , 2012)	Naga_100324g4		

590 Sequence information is from UniProt for *A. thaliana*. Stremenopiles is exemplified with sequences from *Nannochloropsis gaditana* and the whole phylum
591 was searched if matching was unsuccessful; the Apicomplexa phylum was searched through *Toxoplasma gondii* ME49.
592 & Further information and early bibliographic references can be found in (Walling, 2006)

593 ‡ Glp is pyroglutamate
594 * inverted names in TAIR

595 **Table 2. Oxidative and addition processing machinery of plastid-containing organisms.**

Protein N-terminal Modification	Protein function	Name	BREND A category	Entry TAIR	Gene Name TAIR	Targets	Localization	References	<i>Nannochloropsis gaditana</i> [‡]	<i>Paulinella</i> spp	<i>Toxoplasma gondii</i>
Formylation	Methionyl-tRNA formyltransferase		2.1.2.9	At1g66520	pde194	Met-tRNA _f ^{Me}	Plastid/ Mitochondria	(Bryant <i>et al.</i> , 2011)	jgi Nangad1 4821 rna8625	A0A1S6YJ55	TGME49_235640
Arginylation	Arginyl-tRNA-protein transferase	ATE1	2.3.2.8	At5g05700	DLS1	ERF-VII transcription factors	Cytosol	(Graciet <i>et al.</i> , 2009; White <i>et al.</i> , 2017)	Naga_100523g2	-	-
		ATE2		At3g11240							
Monomethylation	Protein methyltransferase	NTM1	2.1.1.244	At5g44450		[APS]-P-K	Cytosol		Naga_100644g2	-	
		?		?		RPL2(AIV), RPL16 (MLS)	Plastid	(Yamaguchi and Subramanian, 2000)			TGME49_201720
		RBCMT		At1g14030	RBCMT	RbcS (MQV)	Plastid	(Ying <i>et al.</i> , 1999) not checked in AT	Naga_100013g90	-	-
N-myristoylation	N-myristoyltransferase	NMT1	2.3.1.97	At5g57020		GXXXXX	Cytosol	(Boisson <i>et al.</i> , 2003; Pierre <i>et al.</i> , 2007; Qi <i>et</i>	Naga_100004g141	No but homologs do occur in Cercozoa, (Giglione and Meinel,	TGME49_209160
		NMT2		At2g44170			Cytosol				

								<i>al.</i> , 2000)		2022)	
Acetylation	NatA complex	NAA10	2.3.1.25 5	At5g13780	ARD1	[ACGS TV]	Cytosol	(Linst <i>er et</i> <i>al.</i> , 2015; Miklá nková <i>et al.</i> , 2022)	Naga_1000 01g191	XP_02806 5450.1	TGME49_2197 60
		HYPK		At3g06610					Naga_1001 33g15	-	-
		NAA15		At1g80410					Naga_1001 15g20	XP_02438 7243.1	TGME49_2237 10
	NatB complex	NAA20	2.3.1.25 4	At1g03150	NAT5	M[DEN Q]		(Hube <i>r et</i> <i>al.</i> , 2020)	Naga_1000 11g91	XP_00887 6485.1	TGME49_2899 00
		NAA25		At5g58450					jpgi Nanocel 779_2 6334 93*	GBB9403 9.1	TGME49_2037 50
	NatC complex	NAA30	2.3.1.25 6	At2g38130	MAK3	M[KL]		(Pesar esi <i>et</i> <i>al.</i> , 2003)	Naga_1000 15g22	CEP0127 9.1	TGME49_2590 70
		NAA35		At2g11000	MAK10				Naga_1001 66g2	XP_00433 8532.1	-
	NatD	NAA40	2.3.1.25 7	At1g18335		S(H2A)			Naga_1000 19g18, Naga_1000 74g15	Yes but not retrieved	TGME49_2300 60
	NatE	NAA50	2.3.1.-	At5g11340				(Armb ruster <i>et al.</i> , 2020)	Naga_1001 26g8	-	TGME49_2600 10
	NatH	NAA60		At5g16800				(Linst <i>er et</i> <i>al.</i> , 2020)	jpgi Nangad1 5987 rna941 9	-	TGME49_2605 50
NatG	NAA70	At4g28030				(Bienv enut <i>et</i> <i>al.</i> , 2020; Dinh <i>et al.</i> , 2015)	Naga_1000 09g37	-	-		
	NAA90	At1g26220, At1g32070, At4g19985		NSI			-	APP8866 8.1, YP_00953 0844.1	-		
Deamidation	Nt-Asn deamidase	NTAN1	3.5.1.12 1	At2g44420			(Vicen te <i>et</i> <i>al.</i> , 2019)	Naga_1003 37g5	-	-	

	Nt-Gln deamidase	NTAQ1	3.5.1.12 2	At2g41760							-	
Cysteine oxidation	Nt-Cys oxidase	PCO4	1.13.11. 20	At2g42670			Cytosol	(Weits <i>et al.</i> , 2014)	-	-	-	
		PCO5		At3g58670								
		PCO1		At5g15120								
		PCO2		At5g39890								
Methionine reduction	Peptide-methionine (S)-S-oxide reductase	MSRA1	1.8.4.11	At5g61640	MRSA		Cytosol	(Rouhier <i>et al.</i> , 2006)	-	-	Naga_1001 26g3	
		MSRA2		At5g07460			Cytosol				Naga_1004 04g4	
		MSRA3		At5g07470			Cytosol				Naga_1014 20g2	
		MSRA4		At4g25130			Plastid					
		MSRA5		At2g18030			Secretory					
	Peptide-methionine (R)-S-oxide reductase	MSRB1	1.8.4.12	At1g53670	MRSB		Plastid	-	-	-	-	TGME49_2254 70
		MSRB2		At4g21860			Plastid					
		MSRB3		At4g04800			Secretory					
		MSRB4		At4g04810			Cytosol					
		MSRB5		At4g04830			Cytosol					
		MSRB6		At4g04840			Cytosol					
		MSRB7		At4g21830			Cytosol					
		MSRB8		At4g21840			Cytosol					
		MSRB9		At4g21850			Cytosol					

596 * only retrieved in *Nannochloropsis oceanica*, not in *N. gaditana*

597 £ searches performed first at NCBI and, if unsuccessful, further processed at JGI ([https://phycosm.jgi.doe.gov/pages/blast-](https://phycosm.jgi.doe.gov/pages/blast-query.jsf?db=eustigmatophyta)
598 query.jsf?db=eustigmatophyta); the NCBI ID is indicated if retrieved and otherwise the JGI entry code.

599 **Table 3. Phylogeny of RbcL type 1 is exemplified by differences at the N-termini and the associated NPTMs.**

Domain	Phylum	Order	Plastid acquisition	Species	Type	Line age	Unprocessed translated sequence	N-terminal sequence	References	
Eukaryota	Rhizaria	Cercozoa	Primary	Paulinella micropora	Green	1A	MS - KKYDAGVKEYRDT - YWTPDYIPLDTELLACFKCTGQE	S2 or AcS2		
				Paulinella chromatophora			MS - KKYDAGVKEYRDT - YWTPDYIPLDTELLACFKCTGQE			
Bacteria	Cyanobacteria	Cyanophyceae	Prochlorococcus marinus	MS - KKYDAGVKEYRDT - YWTPEYVPLDTELLACFKCTGQE			A2			
			Synechococcus sp.BL107	MS - KKYDAGVKEYRDT - YWTPDYVPLDTELLACFKCTGQE						
	Alphaproteobacteria	Rhodobacterales	Rhodovulum sulfidophilum	MA - KTYDAGVKDYRST - YWEPDYTLKSDSILAVFKVIPQP						
			Rhodobacter capsulatus	MAAKTYDAGVKDYRSI - YWEPQYQVKSDSILAVFKVVPQP						
Bacteria	Cyanobacteria	Cyanophyceae	Synechocystis sp. PCC6803	Green		1B	MVQAKAGFKAGVQDYRLT - YYTPDYTPKDTLLACFRMTPQP	V2		
			Synechococcus elongatus PCC118				MPKTQSAAGYKAGVKDYKLT - YYTPDYTPKDTLLAAFRFSPQP	P2		
			Synechococcus sp.PCC7335				MSYSQTQSKSGAGYDAGVQDYRLT - YYAPDYTPRDTLILAAFRMTPQP	S2		
			Nostoc sp.PCC7120				MSYAQTQTQTKSGYKAGVQDYRLT - YYTPDYTPKDTLILAAFRVTPQP	S2	(Flecken <i>et al.</i> , 2020)	
Eukaryota	Plantae/Archaeplastida	Glaucophyta	Primary	Cyanophora paradoxa		Green	1B	MS - SQARTQTRAGFKAGVKDYRLT - YYTPEYTPKETDILAAFRMTPQP	S2	
				Glaucocystis incrassate				MS - SQARTQTVAGFKAGVKDYRLN - YYTPDYKPKETDILAAFRMTPQP	S2	
				Gloeochaete wittrockiana	MP - SQSRTQTASGFKAGVKDYRLN - YYTPEYTPKETDILAAFRMTPQP			P2		
		Chlorophyta		Ostreococcus tauri	MA - PQTETKTGTGFQAGVKDYRLT - YYTPDYQVKETDILAAFRMTPQP			AcP3		
				Chlamydomonas reinhardtii	MV - PQTETKAGAGFKAGVKDYRLT - YYTPDYVVRDTELLAAFRMTPQL				(Houtz <i>et al.</i> , 1992)	
				Physcomitrium patens	MS - PRPEIKAGVGFKAGVKDYRLT - YYTPDYQTKDTELLAAFRMTPQP					
				Marchantia polymorpha	MS - PQTETKAGVGFKAGVKDYRLT - YYTPDYETKDTLILAAFRMTPQP				(Houtz <i>et al.</i> , 1992)	
				Triticum aestivum	MS - PQTETKASVGFKAGVKDYKLT - YYTPEYETKDTLILAAFRVTPQP				(Houtz <i>et al.</i> , 1992)	

				Nicotiana tabacum			MS - PQETKASVGFKAGVKEYKLT - YYPPEYQTKDTDILAAFRVTPQP		(Houtz <i>et al.</i> , 1992)	
				Arabidopsis thaliana			MS - PQETKASVGFKAGVKEYKLT - YYPPEYETKDDTDILAAFRVTPQP		(Bienvenut <i>et al.</i> , 2012)	
	Excavata	Euglenales	Secondary	Euglena gracilis			MS - PQETKTGAGFKAGVKDYRLT - YTPDYQVSETDILAAFRMTPQP			
	Rhizaria	Cercozoa	Secondary	Bigelowiella natans			M - IFAKTE - AAGFKAGVKDYRLT - YTPDYKVKDDTDILAAFRVTPQP	M1		
Bacteria	Alphaproteobacteria	Hyphomicrobiales	-	Rhodospirillum rubrum	Red	1C	MNESVTI - - - RGKDRYKSGVMEYKKMGYWEPDYEPKDDTDILALFRVTPQD	M1		
		Rhodobacter sphaeroides		MDT - - KTTEIKGKERYKAGVLKYAQMGYWDGDYVPKDDTDVLLALFRITPQE			M1			
		Polymorphum gilvum		MDA - - KMKEIKGKERYKAGVLKYAQMGYWDGDYEPKDDTDVLLALFRITPQD			M1			
	Betaproteobacteria	Burkholderiales	Ralstonia eutropha	MNAPETIQAKPRK - RYDAGVMKYKEMGYWDGDYVPKDDTDVLLALFRITPQD			M1			
Eukaryota	SAR	Stramenopiles	Secondary	Thalassiosira pseudonana	Red	1D	MSQSVSERTRIKSDRYESGVI PYAKMGYDAA YTVKDDTDVLLALFRITPQP	AcS2	(Huesgen <i>et al.</i> , 2013)	
				Odontella sinensis			MSQSVSERTRIKSDRYESGVI PYAKMGYDAS YTVQDDTDVLLALFRITPQP			
				Diatoma tenuis			MSQSVTERTRIKSDRYESGVI PYAKMGYDAS YAVKTTDVLALFRITPQP			
				Phaeodactylum tricorutum			MSQSVSERTRIKSDRYESGVI PYAKMGYDAA YAVKNTDVLALFRITPQP			
				Olisthodiscus luteus			MSNNVYERNRIKNDRYESGVI PYAKMGYDANYSVKDDTLALFRITPQP			
	CCTH	Cryptophyta	Secondary	Guillardia theta			MSQSVESRTRIKNERYESGVI PYAKMGYDADYVVIKDDTDVLLALFRMTPQK			
				Cryptomonas paramecium			MSQSVETRTRIKNERYESGVI PYAKMGYDADYSIKDDTDILALFRMTPQK			
				Emiliana huxleyi			MSQAVESRTRIKSERYESGVI PYAKMGYDPEYVVIKDDTDILALFRCTPQP			
	Plantae/Archaeplastida	Rhodophyta	Primary	Pyropia yezoensis			MSQSVESRTRIKSERYESGVI PYAKMGYDADYVVIKDDTDILALFRITPQP			
				Rhodochaete parvula			MSQSVESRTRIKNERYESGVI PYAKMGYDADYVVIKDDTDVLLALFRISPQP			
				Cyanidioschyzon merolae			MAQSVQERTRILKNKRYESGVI PYAKMGYWNPNYVVKDDMLALFRVTPQP		AcA2	
				Cyanidium caldarium			MAQSVQERTRILKNKRYESGVI PYAKMGYDPNYVVKDDTDILALFRVTPQP		A2	

600

601

602 **Table 4. Cytosolic actin isoforms from different organisms, their N-terminus, and the N-terminal machinery involved.**

Clade	Infra-kingdom	Species	Protein name	Alternative name	UniProtKB entry	N-terminal sequence	Matured N-terminus	Matur-ation class	MetAP cleavage	Nat(s) involved		ANAP	Reference
Unikonta	Metazoa	<i>Homo sapiens</i>	ACTC	α -cardiac	P68032	MCDDEE	AcC2	IIa	Y	A	-	N	(Van Damme <i>et al.</i> , 2012; Varland <i>et al.</i> , 2019)
			ACTS	α -skeletal	P68133	MCDEDE	AcC2		Y	A	-	N	
			ACTA	α -smooth	P62736	MCEEED	AcE3		Y	A	H	Y	
			ACTB	β -cyto	P60709	MDDD	AcM1, AcD2 & AcD3	Ib	N	B	H	Y	
			ACTG	γ -cyto	P63261	MEEE	AcM1, AcE2 & AcE3		N	B	H	Y	
			ACTH	γ -smooth	P63267	MCEEE	AcE3	Iib	Y	A	H	Y	
		<i>Drosophila melanogaster</i>	ACT1		P10987	MCDEE	AcD3		Y	A	H	Y	
	Fungi	<i>Schizo-Saccharomyces pombe</i>	ACT1		P10989	MEEE	AcM1	Ia	N	B	-	N	(Cook <i>et al.</i> , 1991)
		<i>Candidat albicans</i>	ACT		A0A1D8PFR4	MDGEE	AcM1		N	B	-	N	(Cook <i>et al.</i> , 1991)
		<i>Saccharomyces cerevisiae</i>	ACT1		P60010	MDSE	AcM1		N	B	-	N	(Van Damme <i>et al.</i> , 2012)
	Amoebozoa	<i>Acanthamoeba castellanii</i>	ACT1		P02578	MGDE	AcG2	IIa	Y	A	-	N	(Hernández-Cuevas <i>et al.</i> , 2019; Redman <i>et al.</i> , 1985)
<i>Dictyo-stelium discoideum</i>		ACT1		P07830	MDGED	AcD2	Ib	N	B	H	Y	(Redman and Rubenstein, 1981)	
Bikonta	Archaeplastida	<i>Arabidopsis thaliana</i>	ACT1	At2g37620	P0CJ46	MADGED	AcA2	IIa	Y	A	-	N	NterDB
			ACT2	At3g18780	Q96292	MAEADD	AcA2		Y	A	-	N	

		ACT3	At3g53750	P0CJ47	MADGED	AcA2		Y	A	-	N	
		ACT4	At5g59370	P53494	MADGED	AcA2		Y	A	-	N	
		ACT7	At5g09810	P53492	MADGED	AcA2		Y	A	-	N	
		ACT8	At1g49240	Q96293	MADADD	AcA2		Y	A	-	N	
		ACT11	At3g12110	P53496	MADGED	AcA2		Y	A	-	N	
		ACT12	At3g46520	P53497	MADGED	AcA2		Y	A	-	N	
Rhizaria	<i>Paulinella chromatophera</i>	ACT1			MAEEEEEE	AcE3	I Ib	Y	A	H?	Y	(Oberleitner <i>et al.</i> , 2022)
Alveolata	<i>Plasmodium berghei</i>	ACT1		A0A509AU65	MGDEE	AcG2	I Ia	Y	A	-	N	(Nyonda <i>et al.</i> , 2022)
	<i>Toxoplasma gondii</i>	ACT1		P53476	MADEE	AcA2 & AcD3	I Ib	Y	A	H?	Y	
Stramenopiles	<i>Thalassiosira pseudonana</i>	ACT1		B8CFV4	MADEED	AcA2	I Ia	Y	A	-	N	(Huesgen <i>et al.</i> , 2013)

603 NterDB is available at <https://n-terdb.i2bc.paris-saclay.fr/>.

604

605 **BOX**

606 **Box 1: The plastid-encoded N-terminal processing machinery and its progressive**
607 **transfer to the nuclear genome throughout evolution**

608 Here we illustrate with the example of the N-terminal processing machinery of plastid-
609 containing organisms how gene transfer might have proceeded progressively from plastid to
610 nucleus during evolution. We use the two subunits of RuBisCO (RbcL and RbcS) as markers
611 of the migration of major photosynthetic functions borne by several subunits now encoded in
612 both genomes (this also includes photosystems). In the top left of **Figure Box 1**, we list all
613 enzymes of the early modification machinery also occurring in cyanobacteria - namely FMT,
614 PDF, MetAP, PepP, RimIJ, and NAA90 - and their localization during three major stages of
615 evolution. RimIJL corresponds to the only NAT occurring in bacteria and modifying only a
616 few proteins including EFTu, SecB, and ribosomal proteins L7 and S5 (Bienvenut *et al.*,
617 2015; Pletnev *et al.*, 2022). The corresponding timescale is shown in the bottom green panel.
618 This illustrates how the plastid content decreased from a couple of thousand genes to 850 in
619 Paulinellidae, 150-200 in red algae, and 90 or so in land plants. In the right blue panel, the
620 type of evolution is indicated for each gene. We indicate in this figure how major genes
621 involved in early N-terminal modifications were lost very late in evolution. The most
622 remarkable is certainly NAA90, which was transferred to the nucleus contemporary to RbcS.
623 This analysis also suggests that NAA70 might have evolved later directly from the nuclear
624 version of NAA70. This might explain why only NAA70 has been retrieved in Euglenozoa
625 and diatoms even though NAA70 was lost, if one considers that only part of the nuclear
626 genome was retained by the photosynthetic primary organism during endosymbiosis. Finally,
627 in the bottom right yellow part of the figure, the parallel increase in the contribution of the
628 nuclear genome to plastid function is indicated. Taken together, it covers almost an entire

629 bacterial genome in land plants, which feature the most complete gene transfer from plastid to
630 nucleus.

631 Note that the parasitic life of Apicomplexa has led to a consequent decrease in the plastid
632 genome to ~30 genes and the loss of the major photosynthetic genes including RbcL. We do
633 not take this into account in the figure, as parasitism is likely to have biased the process by
634 speeding up gene loss during evolution (van Dooren and Striepen, 2013; Wilson *et al.*, 1996).
635 Such genomes encode mostly remnants of the transcription-translation system and have
636 almost entirely lost the ancestral photosynthetic machinery. The purpose of the persistence of
637 a protein synthesis machinery is unknown.

638

639 **Legend to Figure Box 1: Evolutionary steps leading to progressive relocalization of the**
640 **N-terminal processing machinery from the plastid to the nuclear genome along the**
641 **primary endosymbiosis timescale.**

642 The main Nt processing enzymes from bacteria are listed. The RbcL and RbcS subunits of
643 RuBisCO are used as landmarks and probes of the behavior of a crucial multi-subunit
644 complex requiring complex N-terminal maturation of major subunits.

645 *Panel A:* The locations of the corresponding genes along the evolutionary timescale (indicated
646 below) are indicated. An arrow below indicates the corresponding evolutionary timepoint.
647 Loss of *NAA90* has been observed in the plastid of *Cyanophora paradoxa* but not in the other
648 Glaucophyta plastids available to date. This is shown with an asterisk.

649 *Panel B:* The type of transfer for each of the genes of the Nt processing machinery shown in
650 Panel A is indicated.

651 *Panel C:* The number of open reading frames encoded in the plastid across the evolutionary
652 timescale is indicated for the main groups of plastid-containing organisms resulting from
653 primary endosymbiosis.

654 *Panel D:* The number of open reading frames encoded in the nucleus across the evolutionary
655 timescale is indicated.

656

657 **FIGURE LEGENDS**

658

659 **Figure 1. A schematized tree of life showing the high representation of plastid-**
660 **containing organisms in eukaryotic biodiversity.**

661 CCTH: Cryptophyta, Centrohelida, Telonemia, and Haptophyta. SAR: Stramenopiles,
662 Alveolata, and Rhizaria. The classification is according to (Lynch *et al.*, 2014). Full or partial
663 genomic data and annotation are available for all the indicated organisms. LECA is Last
664 Eukaryote Common Ancestor. The names of organisms with plastids are colored in light and
665 dark green, brown, and purple. Organisms without plastids are in black. Model organisms
666 frequently mentioned in this report are underlined.

667

668 **Figure 2. The HUNTER workflow.**

669 The different steps of the HUNTER workflow are displayed (see also main text). The process
670 allows the determination of the N-terminal modification (i.e., Nt-acetylation or free) at the
671 proteome scale

672

673 **Figure 3. Main modification events at the N-termini of plastid-containing organisms.**

674 Modifications are grouped in three classes (Addition, green; cleavage, blue, alteration, grey)
675 Modifications only retrieved in organelles (i.e., Mitochondria and plastids) are colored in
676 orange.

677

678 **Figure 4. NAT specificity and the unique amino terminal processing modes of actin.**

679 *Panel A:* Diverse NATs and their substrate specificity in plastid-containing organisms. NatA,
680 B, H are involved in the processing of actins (panel B). The different NatGs of *A. thaliana* are

681 mentioned. The number in front of each Nat relates to the percentage of substrate proteins in
682 the proteome (Aksnes *et al.*, 2016). X means any amino acid.

683 *Panel B*: Types of actin processing in the cytosol and the NTPM and associated machinery
684 involved. ANAP is N-terminal acetyl-aminopeptidase. **Table 4** provides different examples of
685 the processing types in plastid-containing organisms.

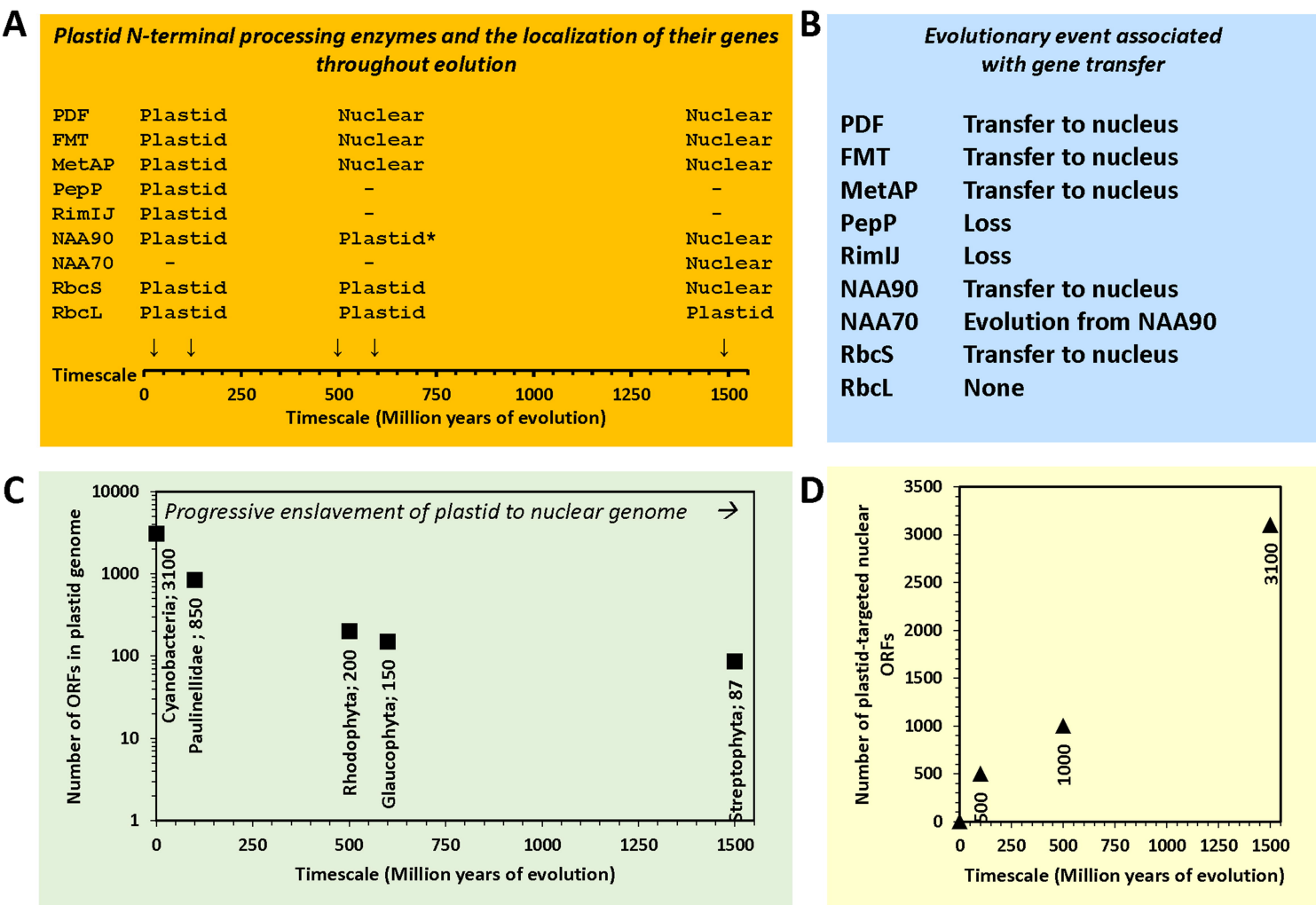


Figure Box 1: Evolutionary steps leading to progressive relocalization of the N-terminal processing machinery from the plastid to the nuclear genome along the primary endosymbiosis timescale.

The main Nt processing enzymes from bacteria are listed. The RbcL and RbcS subunits of RuBisCO are used as landmarks and probes of the behavior of a crucial multi-subunit complex requiring complex N-terminal maturation of major subunits. *Panel A*: The locations of the corresponding genes along the evolutionary timescale (indicated below) are indicated. An arrow below indicates the corresponding evolutionary timepoint. Loss of *NAA90* has been observed in the plastid of *Cyanophora paradoxa* but not in the other Glaucophyta plastids available to date. This is shown with an asterisk. *Panel B*: The type of transfer for each of the genes of the Nt processing machinery shown in Panel A is indicated. *Panel C*: The number of open reading frames encoded in the plastid across the evolutionary timescale is indicated for the main groups of plastid-containing organisms resulting from primary endosymbiosis. *Panel D*: The number of open reading frames encoded in the nucleus across the evolutionary timescale is indicated.

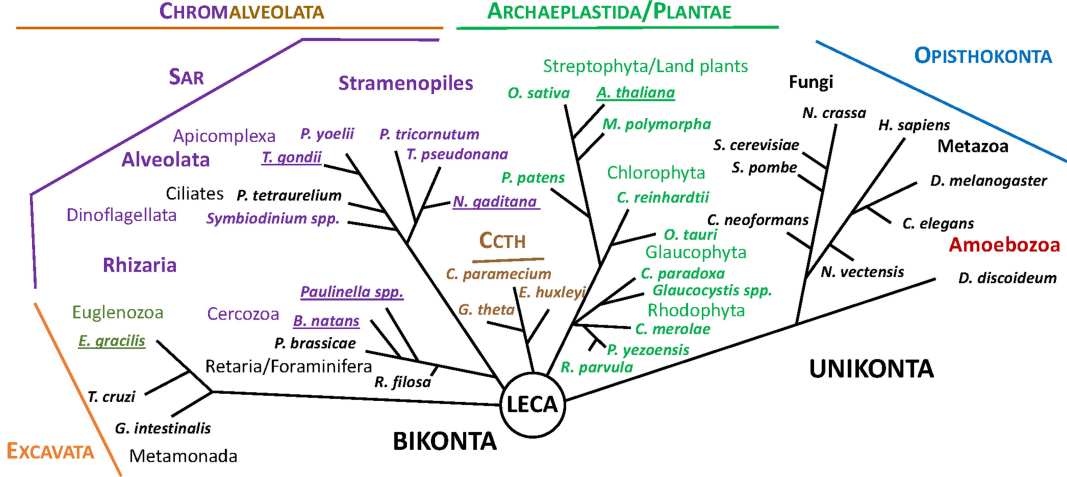


Figure 1. A schematized tree of life showing the high representation of plastid-containing organisms in eukaryotic biodiversity. CCTH: Cryptophyta, Centrohelida, Telonemia, and Haptophyta. SAR: Stramenopiles, Alveolata, and Rhizaria. The classification is according to (Lynch *et al.*, 2014). Full or partial genomic data and annotation are available for all the indicated organisms. LECA is Last Eukaryote Common Ancestor. The names of organisms with plastids are colored in light and dark green, brown, and purple. Organisms without plastids are in black. Model organisms frequently mentioned in this report are underlined.

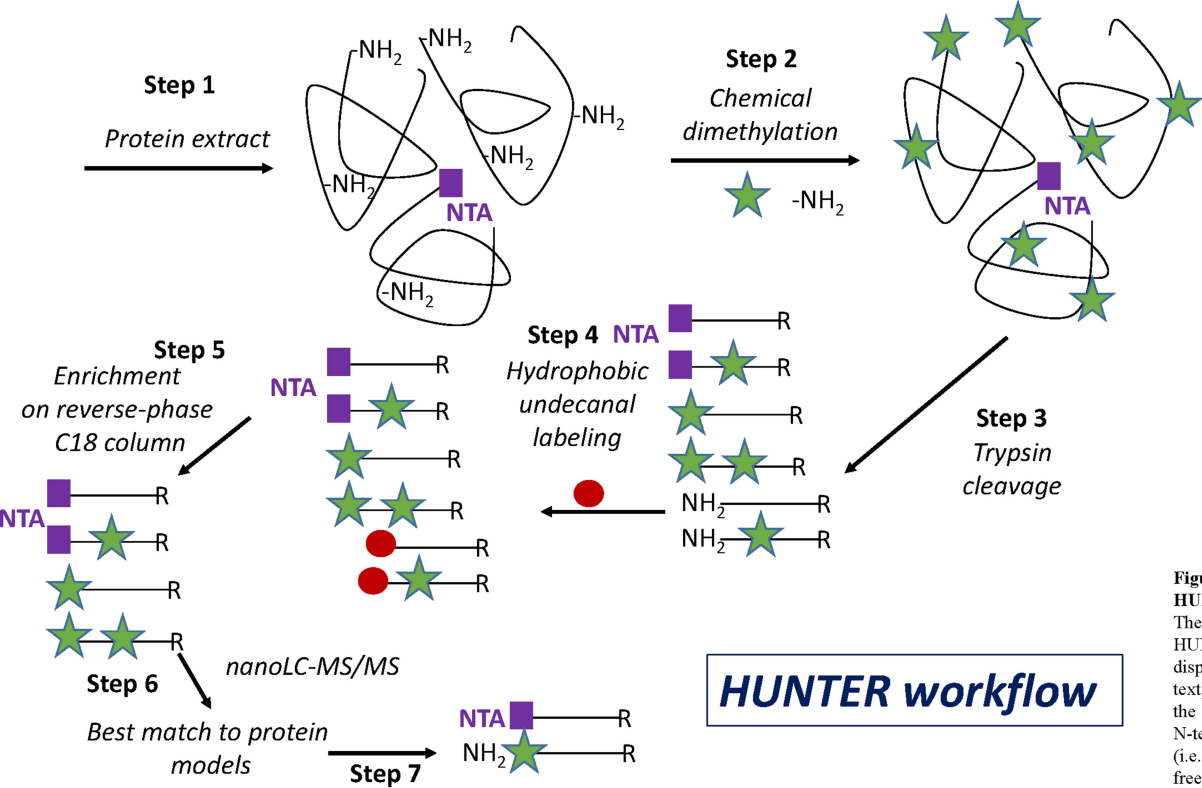


Figure 2. The HUNTER workflow. The different steps of the HUNTER workflow are displayed (see also main text). The process allows the determination of the N-terminal modification (i.e., Nt-acetylation or free) at the proteome scale

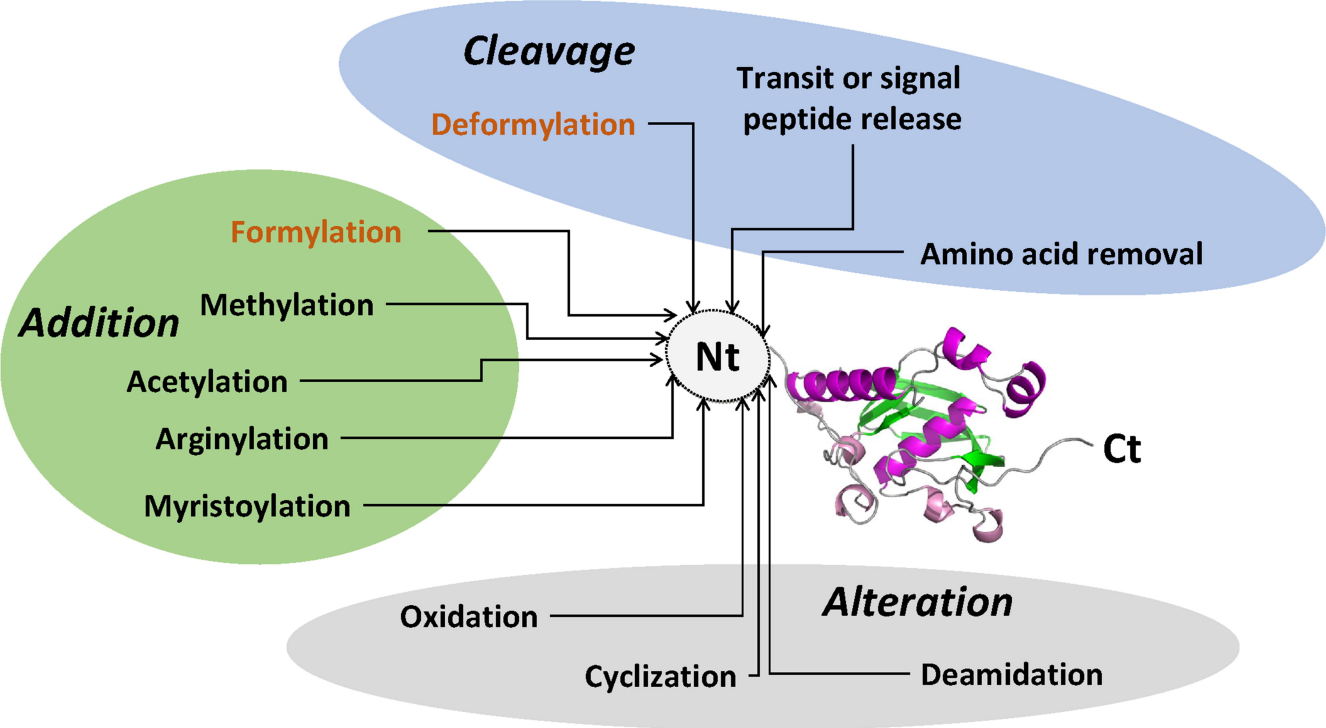
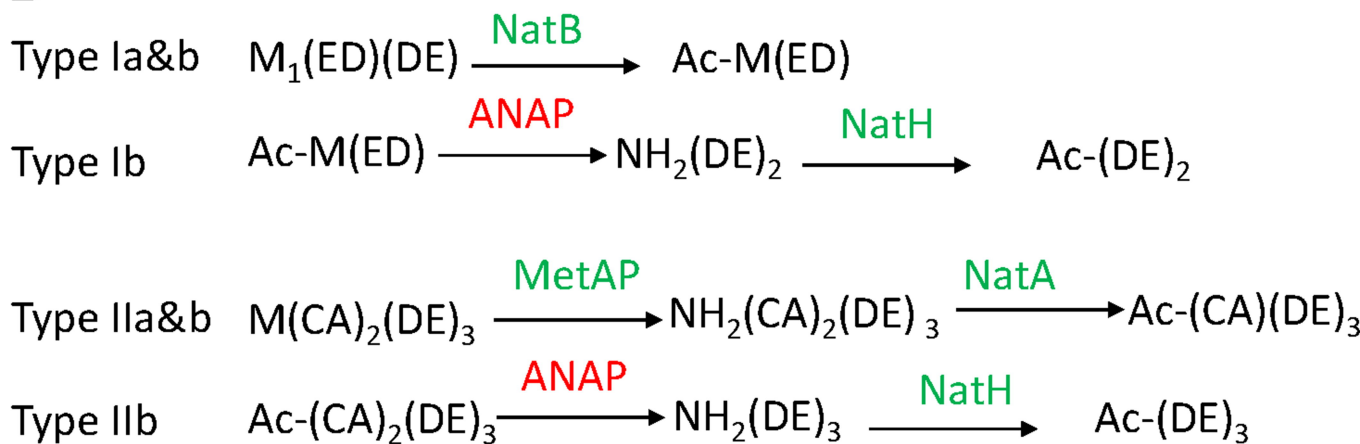


Figure 3. Main modification events at the N-termini of plastid-containing organisms.

Modifications are grouped in three classes (Addition, green; cleavage, blue, alteration, grey) Modifications only retrieved in organelles (i.e., Mitochondria and plastids) are colored in orange.

A

<i>Nuclear-encoded Nats</i>		<i>Plastid-resident Nats</i>
NatA: NH ₂ -ACGSTV	46%	NatG family - NAA90:GNAT1/2/3 - NAA70:GNAT4/5/6/7/10 NH ₂ -X
NatB: NH ₂ -M(DENQ)	21%	
NatC: NH ₂ -M(KFIYL)	21%	
NatE: NH ₂ -M(AGV)		
NatF: NH ₂ -M(LV)		
NatH: NH ₂ -(DE) of actins		
NatD: NH ₂ -SGRK of histones H2&4		

B*Actin processing (cytosol)***Figure 4. NAT specificity and the unique amino terminal processing modes of actin.**

Panel A: Diverse NATs and their substrate specificity in plastid-containing organisms. NatA, B, H are involved in the processing of actins (panel B). The different NatGs of *A. thaliana* are mentioned. The number in front of each Nat relates to the percentage of substrate proteins in the proteome (Aksnes *et al.*, 2016). X means any amino acid.

Panel B: Types of actin processing in the cytosol and the NTPM and associated machinery involved. ANAP is N-terminal acetyl-aminopeptidase. **Table 4** provides different examples of the processing types in plastid-containing organisms.