



HAL
open science

Monitoring Annual Land Use/Land Cover Change in the Tucson Metropolitan Area with Google Earth Engine (1986–2020)

Fabrice Dubertret, François-Michel Le Tourneau, Miguel L. Villarreal, Laura M. Norman

► **To cite this version:**

Fabrice Dubertret, François-Michel Le Tourneau, Miguel L. Villarreal, Laura M. Norman. Monitoring Annual Land Use/Land Cover Change in the Tucson Metropolitan Area with Google Earth Engine (1986–2020). International Symposium of LabEx DRIIHM 2022, Jun 2022, Nantes, France. , 2022, 10.34972/driihm-4409bc . hal-03754601

HAL Id: hal-03754601

<https://hal.science/hal-03754601v1>

Submitted on 19 Aug 2022

HAL is a multi-disciplinary open access archive for the deposit and dissemination of scientific research documents, whether they are published or not. The documents may come from teaching and research institutions in France or abroad, or from public or private research centers.

L'archive ouverte pluridisciplinaire **HAL**, est destinée au dépôt et à la diffusion de documents scientifiques de niveau recherche, publiés ou non, émanant des établissements d'enseignement et de recherche français ou étrangers, des laboratoires publics ou privés.

Monitoring Annual Land Use/Land Cover Change in the Tucson Metropolitan Area with Google Earth Engine (1986–2020)

Fabrice Dubertret (IRL iGLOBES - CNRS - University of Arizona), François-Michel Le Tourneau (PRODIG - CNRS), Miguel L. Villarreal (U.S. Geological Survey) and Laura M. Norman (U.S. Geological Survey)



CONTEXT

The city of Tucson and the upper Santa Cruz River Valley are located in the Sonoran Desert of southeastern Arizona (USA), a region affected by both **massive population growth** and **rapid climate change**. As a consequence, its **fragile arid ecosystem undergoes increasing pressure** resulting in important land use / land cover (LULC) transformations. This paper proposes a generic and innovative method to fit the crucial need of **monitoring and quantifying landscape evolution** over several decades.

MATERIAL AND METHODS

We mobilized the tremendous computing capacities of **Google Earth Engine (GEE)** to create **yearly LULC maps from 1986 to 2020**, in a 5 steps workflow:

- 1. Data pre-processing**, consisting of invalid pixels (e.g. clouds) masking, illumination (BRDF) and topographic corrections, and mosaicking of **bi-seasonal Landsat imagery** for each year;
- 2. Computation of ancillary data**, including Multitemporal Kauth-Thomas (MKT) Transformation, calculation of various indices for better detection of bare, vegetated and built areas, Gray-Level Co-occurrence Matrix (GLCM) textural features for each band and index, and other contextual geographic data such as the slope, or buffered streams and roads;
- 3. Random Forest classification**, using the resulting 124 layers of information a year as input, as well as a stratified training sample of 4874 points within 955 polygons (5,472.5 ha) representing 14 LULC classes;
- 4. Image post-processing** involved cleaning the yearly modeled LULC maps with a majority filter, filling remaining data gaps with closest available value, temporal smoothing of detected changes to focus on pluriannual trends, and automated correction of persistent misclassified urban pixels;
- 5. Accuracy assessment** with a set of 4960 stratified sample points from 968 validation polygons (5,106.7 ha) representing the same 14 LULC classes.

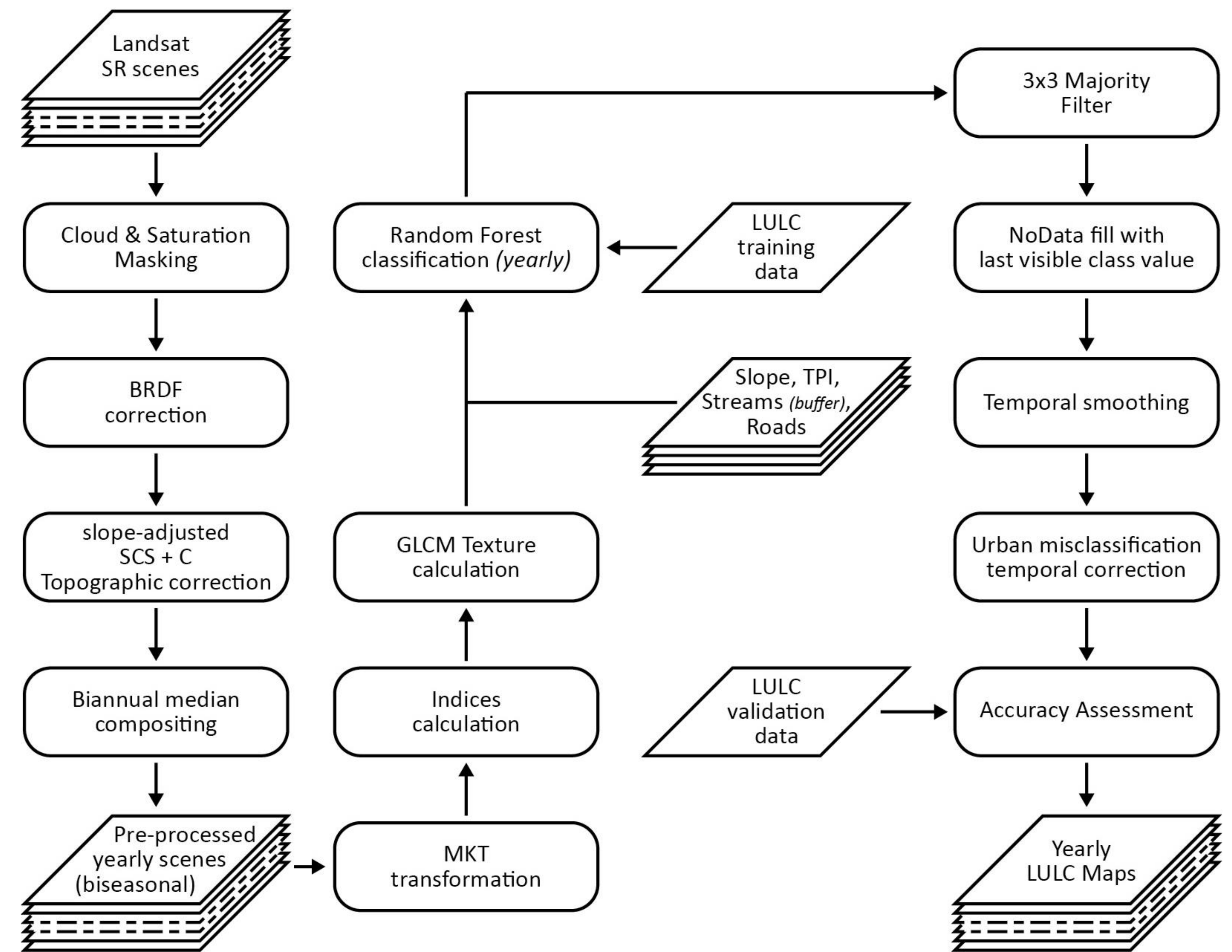


Figure 1 - Google Earth Engine workflow scheme for yearly LULC classification

RESULTS AND DISCUSSION

We achieved **very good classification results** (yearly Overall Accuracies ranging from 86.7% in 1986 to 96.3% in 2020), allowing us to **precisely quantify trends LULC Changes dynamics** over a 35 year period, and in the future.

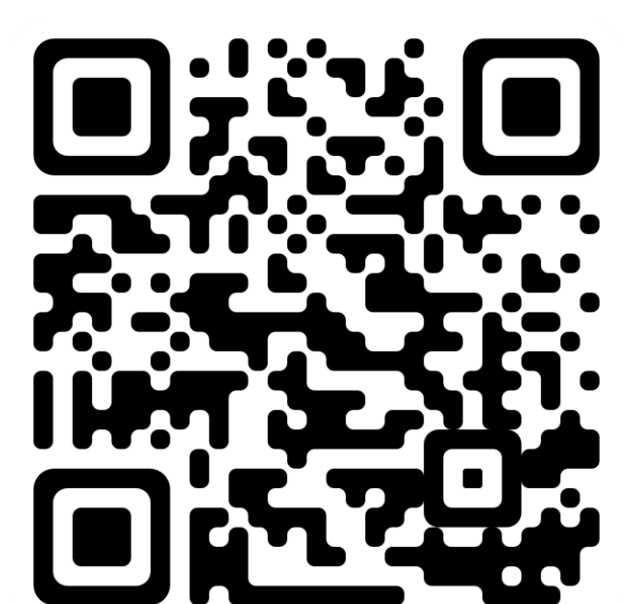
Natural land covers (i.e., shrubs, grasslands, forests and barren washes) are **highly dominant in the region** as they cover $\pm 90\%$ of the watershed. Shifts among natural LULC classes also make up the **vast majority of identified changes** (86.8%). Most commonly observed dynamics are **temporary switches between natural land covers**, which can be explained by different factors, notably **climatic variations** from one year to another, such as prolonged and persistent drought, or the **wildfire and regeneration cycles** impacting forested areas. Still, these LULC classes maintain a **rough balance over the years** at the watershed scale, as most transformations are compensated by opposite trends.

Regarding **human-induced LULC changes**, a few **mining or agriculture lands** have been newly established in some parts of our the region of interest, but their **overall area has decreased** as they are counterbalanced by the natural revegetation of abandoned lands. Albeit less frequent, **anthropic LULC transformations** are most often permanent, especially regarding **conversion to built-up areas** which is the **main driver** of persistent LULC changes in the Tucson area (2.9% of observed changes). Urban development has demonstrated a **steady increase** and has more than doubled (+118.7%) over the last 35 years, and this expansion is clearly oriented towards **low-density development on new lands**, mostly shrubs, rather than densification of existing urban areas (+143.2% vs. +79.1%). This leads to a **leapfrog urbanization**, with 60% this suburbanization occurring away from cities -but close major roads- in new housing communities, often accompanied by green recreational areas such as golfs.

These dynamics are putting an **increasing pressure** to the **scarce water resources** of this arid region and to its fragile ecosystems by **fragmenting species habitats**...

CONCLUSION

We propose here an **automated method** for computing long time series of LULC maps, entirely hosted in GEE to quickly and easily process large amounts of data. While its **performance** has been clearly illustrated with the Tucson area example, this tool is **adaptable to fit other regions of interest** in order to provide critical and timely information on the dynamics of LULC change, with high temporal depth, to decision makers.



<https://doi.org/10.3390/rs14092127>

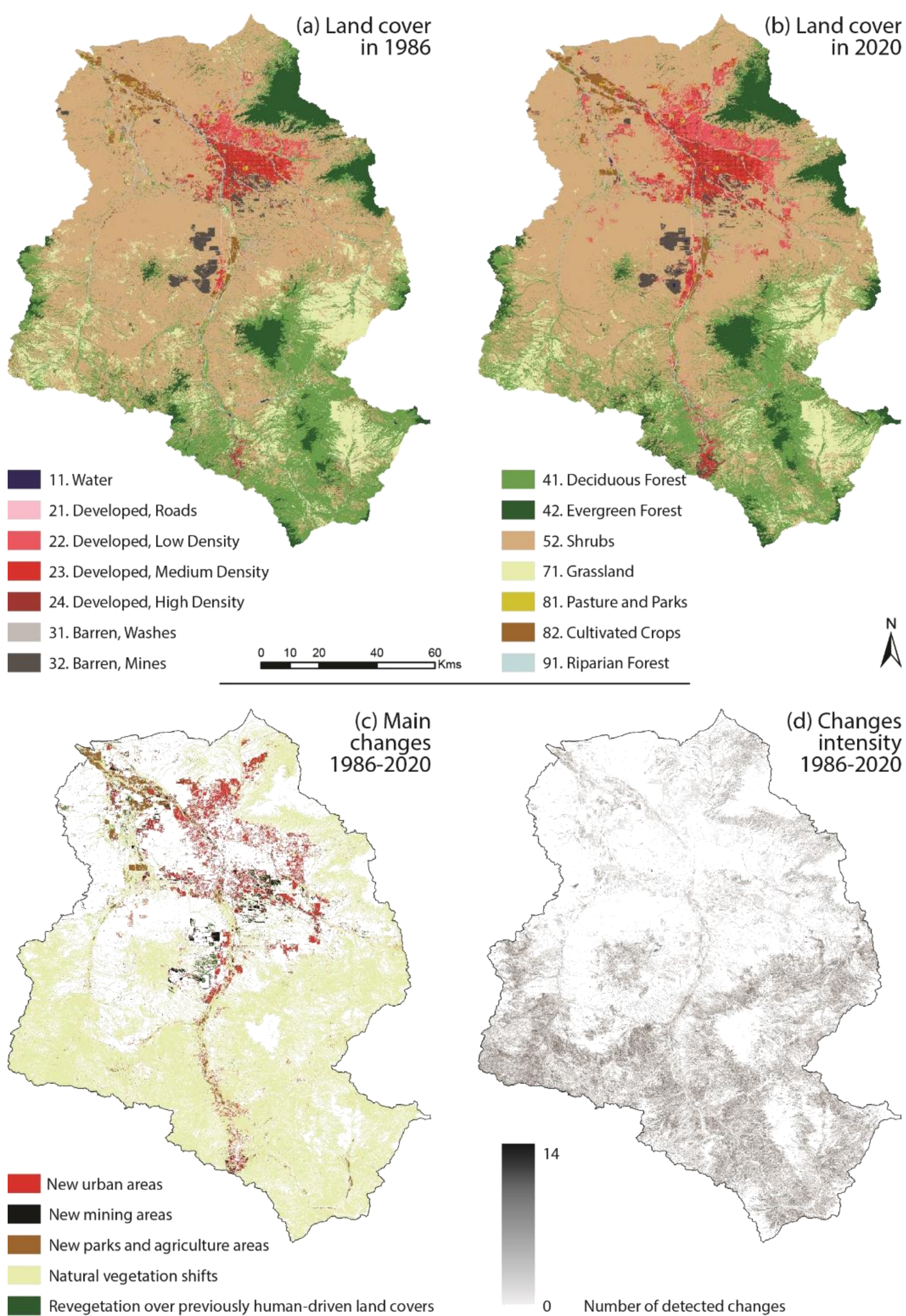


Figure 2 - LULC change dynamics in the Upper Santa Cruz Watershed