



HAL
open science

Efficacy of 12 weeks oral beta-alanine supplementation in patients with chronic obstructive pulmonary disease: a double-blind, randomized, placebo-controlled trial

Jana de Brandt, Wim Derave, Frank Vandenabeele, Pascal Pomiès, Laura Blancquaert, Charly Keytsman, Marina Barusso-Grüninger, Fabiano de Lima, Maurice Hayot, Martijn Spruit, et al.

► To cite this version:

Jana de Brandt, Wim Derave, Frank Vandenabeele, Pascal Pomiès, Laura Blancquaert, et al.. Efficacy of 12 weeks oral beta-alanine supplementation in patients with chronic obstructive pulmonary disease: a double-blind, randomized, placebo-controlled trial. *Journal of Cachexia, Sarcopenia and Muscle*, In press, 10.1002/jcsm.13048 . hal-03753681

HAL Id: hal-03753681

<https://hal.science/hal-03753681>

Submitted on 18 Aug 2022

HAL is a multi-disciplinary open access archive for the deposit and dissemination of scientific research documents, whether they are published or not. The documents may come from teaching and research institutions in France or abroad, or from public or private research centers.

L'archive ouverte pluridisciplinaire **HAL**, est destinée au dépôt et à la diffusion de documents scientifiques de niveau recherche, publiés ou non, émanant des établissements d'enseignement et de recherche français ou étrangers, des laboratoires publics ou privés.



Distributed under a Creative Commons Attribution 4.0 International License

Efficacy of 12 weeks oral beta-alanine supplementation in patients with chronic obstructive pulmonary disease: a double-blind, randomized, placebo-controlled trial

Jana De Brandt^{1,2}, Wim Derave³, Frank Vandennebeele¹, Pascal Pomiès⁴, Laura Blancquaert³, Charly Keytsman^{1,2}, Marina S. Barusso-Grüninger^{1,5}, Fabiano F. de Lima^{1,6}, Maurice Hayot⁴, Martijn A. Spruit^{7,8} & Chris Burtin^{1,2*}

¹Faculty of Rehabilitation Sciences, REVAL - Rehabilitation Research Center, Hasselt University, Diepenbeek, Belgium; ²BIOMED - Biomedical Research Institute, Hasselt University, Diepenbeek, Belgium; ³Department of Movement and Sports Sciences, Ghent University, Ghent, Belgium; ⁴PhyMedExp, University of Montpellier – INSERM – CNRS – CHRU Montpellier, Montpellier, France; ⁵LEFIR - Spirometry and Respiratory Laboratory, São Carlos Federal University - UFSCar, São Carlos, São Paulo, Brazil; ⁶Faculty of Science and Technology, Department of Physical Therapy, Postgraduate Program in Physical Therapy, São Paulo State University (UNESP), Presidente Prudente, São Paulo, Brazil; ⁷Department of Research and Education, CIRO+, Horn, The Netherlands; ⁸Department of Respiratory Medicine, NUTRIM School of Nutrition and Translational Research in Metabolism, Maastricht University Medical Centre, Maastricht, The Netherlands

Abstract

Background Beta-alanine (BA) supplementation increases muscle carnosine, an abundant endogenous antioxidant and pH buffer in skeletal muscle. Carnosine loading promotes exercise capacity in healthy older adults. As patients with chronic obstructive pulmonary disease (COPD) suffer from elevated exercise-induced muscle oxidative/carbonyl stress and acidosis, and from reduced muscle carnosine stores, it was investigated whether BA supplementation augments muscle carnosine and induces beneficial changes in exercise capacity, quadriceps function, and muscle oxidative/carbonyl stress in patients with COPD.

Methods In this double-blind, randomized, placebo (PL)-controlled trial ([clinicaltrials.gov](https://clinicaltrials.gov/ct2/show/study/NCT02770417) identifier: NCT02770417), 40 patients (75% male) with COPD (mean \pm standard deviation: age 65 ± 6 years; FEV₁% predicted 55 ± 14 %) were assigned to 12 weeks oral BA or PL supplementation (3.2 g/day). The primary outcome, i.e. muscle carnosine, was quantified from m. vastus lateralis biopsies obtained before and after intervention. Co-primary outcomes, i.e. incremental and constant work rate cycle capacity, were also assessed. Linear mixed model analyses were performed. Compliance with and side effects of supplement intake and secondary outcomes (quadriceps strength and endurance, and muscle oxidative/carbonyl stress) were also assessed.

Results Beta-alanine supplementation increased muscle carnosine in comparison with PL in patients with COPD (mean difference [95% confidence interval]; $+2.82$ [1.49 – 4.14] mmol/kg wet weight; $P < 0.001$). Maximal incremental cycling capacity (VO_{2peak}: $+0.5$ [-0.7 to 1.7] mL/kg/min; $P = 0.384$, Wpeak: $+5$ [-1 to 11] W; $P = 0.103$) and time to exhaustion on the constant work rate cycle test ($+28$ [-179 to 236] s; $P = 0.782$) did not change significantly. Compliance with supplement intake was similar in BA (median (quartile 1–quartile 3); 100 (98–100)%) and PL (98 (96–100)%) ($P = 0.294$) groups, and patients did not report side effects possibly related to supplement intake. No change was observed in secondary outcomes.

Conclusions Beta-alanine supplementation is efficacious in augmenting muscle carnosine ($+54\%$ from mean baseline value) without side effects in patients with COPD in comparison with PL. However, accompanied beneficial changes in exercise capacity, quadriceps function, and muscle oxidative/carbonyl stress were not observed.

Keywords Carnosine; Chronic obstructive pulmonary disease; Physical capacity; Oxidative/carbonyl stress

Introduction

Patients with chronic obstructive pulmonary disease (COPD) often suffer from extra-pulmonary features, including loss of lower-limb muscle strength and endurance.¹ These functional muscular deficits are mainly caused by structural and metabolic alterations, such as a muscle fibre type shift towards a higher proportion of fast-twitch fibres, mitochondrial dysfunction, and elevated basal and exercise-induced oxidative/carbonyl stress.¹ These alterations decrease the muscle's oxidative capacity and cause earlier and greater reliance on the glycolytic metabolism, which in turn leads to earlier onset of muscle acidosis and contractile fatigue during exercise.²

Carnosine, an endogenous histidine-containing dipeptide abundantly present in skeletal muscle,³ prominently in fast-twitch fibres,⁴ might hold potential to delay onset of muscle acidosis and counteract oxidative/carbonyl stress in patients with COPD. Carnosine is formed by combining beta-alanine (BA) with L-histidine by carnosine synthase³ and is known to be lowered in patients with severe to very severe COPD.⁵ Carnosine plays different roles in the myocellular homeostasis: (i) carnosine is a natural antioxidant and interacts with and scavenges reactive oxygen species,³ thereby reducing production of reactive aldehydes due to lipid peroxidation.⁶ Furthermore, carnosine is able to quench these reactive aldehydes by forming conjugates,⁷ thus preventing formation of advanced glycoxidation and lipoxidation end-products⁸; (ii) carnosine acts as pH buffer and is estimated to be responsible for 4–9% of intramuscular buffer capacity.⁹ Hence, carnosine is able to delay onset of muscle acidosis during high-intensity exercise in healthy adults.¹⁰

Beta-alanine, an affordable over-the-counter available nutritional supplement, has been proven to augment muscle carnosine and in turn exercise capacity in healthy older adults in a safe and feasible manner.^{11–17} Indeed, 12 weeks of BA supplementation (3.2 g/day) augmented muscle carnosine concentration by 85% from baseline value and in turn enhanced maximal (+12.2%) and submaximal (+36.5%) exercise capacity in healthy older adults between 60 and 80 years of age.¹¹

To date, the efficacy of BA supplementation has not been studied in patients with COPD. Therefore, this study investigated BA supplementation in patients with COPD. It was hypothesized that 12 weeks of BA supplementation in patients with COPD would lead to muscle carnosine concentration augmentation, as well as accompanied beneficial effects on exercise capacity, quadriceps function, and muscle oxidative/carbonyl stress.

Methods

Study design and participants

This is a double-blind, randomized, placebo (PL)-controlled trial (clinicaltrials.gov identifier: NCT02770417) on the efficacy of 12 weeks of BA supplementation in patients with COPD. See supporting information for sample size calculation, randomization, and blinding. Participants were recruited between June 2016 and November 2018. The study was approved by the Ethics Committees of Jessa Hospital (Hasselt, Belgium) and Hasselt University (Diepenbeek, Belgium) (Belgian study registration number: B243201628086) and performed in accordance with the latest revision (2013) of the Declaration of Helsinki. Some baseline data comparing patients with COPD with age-matched and sex-matched healthy controls have been published before.^{5,18}

Patients with mild to very severe COPD, according to the Global Initiative for Chronic Obstructive Lung Disease (GOLD) guidelines,¹⁹ aged between 40 and 80 years were recruited at the Respiratory Medicine Department outpatient consultation of Jessa Hospital (Hasselt, Belgium). A clinicaltrials.gov registry deviation regarding the inclusion criteria of severity of airway obstruction is reported. Inclusion of patients with moderate to very severe airway obstruction was changed to mild to very severe airway obstruction, as muscle dysfunction is present throughout the whole disease spectrum.^{20,21} See supporting information for exclusion criteria. All participants provided written informed consent prior to study inclusion.

Intervention

Beta-alanine and PL supplements were provided by Natural Alternatives International (NAI, USA). After a 2 week baseline assessment, the intervention group received 12 weeks of sustained-release BA supplementation (SR CarnoSyn®) consisting of an oral BA intake of 3.2 g/day (four pills of 800 mg/day).¹¹ The control group received maltodextrin as PL supplementation. See supporting information for details.

Outcomes

Participants were assessed on 4 days in a 2 week period before the start of the intervention (baseline assessment) and during the last 2 weeks of the intervention (outcome assessment) (Supporting Information, *Table S1*).

Age, sex, smoking status, number of hospitalizations in the previous 12 months, COPD Assessment Test, modified Medical Research Council scale for dyspnoea, Charlson Comorbidity Index, and medication use were obtained. See supporting information for cut-off scores, references, and description of assessment of pulmonary function, body composition, cycling capacity, walking capacity, physical activity (PA), quadriceps function, compliance, side effects and exploratory outcomes.

At baseline, a muscle biopsy of the middle part of m. vastus lateralis (right leg) was performed via the Bergström technique. For the outcome assessment, a biopsy was obtained by making a new incision at ± 1 cm next to the baseline assessment incision. A part of the muscle sample was snap frozen in liquid nitrogen for muscle carnosine and related metabolites analysis via high-performance liquid chromatography (HPLC) and for oxidative/carbonyl stress analysis via western immunoblotting. Another part was embedded in an optimum cutting temperature compound (FSC22 Frozen Section Media, Leica Biosystems, Richmond, IL, USA) and frozen in isopentane (VWR Chemicals, Radnor, PA, USA) cooled by liquid nitrogen for analysis of muscle fibre characteristics via immunostaining. To investigate systemic carnosine-related metabolites (plasma histidine, BA, taurine, and serum carnosinase activity), two fasted venous blood samples (one serum and one lithium heparin plasma tube) were obtained. Muscle and blood samples were stored at -80°C in University Biobank Limburg until analysis. See supporting information for protocols.

Clinicaltrial.gov registry deviations regarding the outcomes are reported in the supporting information.

Statistical analyses

The Statistical Package for the Social Sciences (v.24.0, IBM, NY, USA) was used for all statistics. Baseline assessment data are described as mean \pm standard deviation or median (quartile 1–quartile 3), as appropriate after testing for normality using the Shapiro–Wilk test and for homogeneity of variance using Levene’s test. Proportions are expressed in percentages. Comparison of compliance and side effects between the BA and PL groups was performed using the Mann–Whitney U test, and comparison of proportions between the BA and PL groups was performed using χ^2 test for homogeneity or Fisher’s test, as appropriate. A linear 2×2 mixed model analysis was used to investigate the effect of BA supplementation on muscle carnosine and related metabolites, physical capacity, oxidative/carbonyl stress, and exploratory outcomes in comparison with PL. Data are expressed as mean [95% confidence interval]. $P < 0.05$ was set for significance. See supporting information and Table S2 for details.

Results

Baseline characteristics for both groups are shown in Table 1. Participant inclusion at each stage of the study is depicted by a CONSORT flow diagram (Figure 1). A 5% overall drop-out rate was established (BA: 10 vs. PL: 0%).

Compliance with and side effects of beta-alanine supplementation

Pill compliance was high and similar (BA: 100 (98–100) vs. PL: 98 (96–100)%; $P = 0.294$) between groups. Reported complaints regarding supplement intake and common non-respiratory complaints were not different between groups (Table S3). During the intervention period, eight participants experienced an exacerbation of COPD (two participants dropped out, and six participants completed the study (hospitalization: $n = 1$)).

Effects of beta-alanine supplementation

Muscle carnosine and related metabolites

Twelve weeks of BA supplementation increased muscle carnosine concentration by +54% of the mean baseline value in comparison with PL (–12% of mean baseline value) in patients with COPD (BA baseline: 4.25 [3.32–5.17]; BA outcome: 6.59 [5.61–7.56] vs. PL baseline: 4.06 [3.09–5.04]; PL outcome: 3.59 [2.60–4.58] mmol/kg wet weight (WW); $P < 0.001$; Figure 2A). Within the BA group, the increase in muscle carnosine concentration was not different between patients with COPD in GOLD stage I/II ($+2.39 \pm 1.91$ mmol/kg WW; +47% of mean baseline value; $n = 10$) and GOLD stage III/IV ($+2.03 \pm 2.83$ mmol/kg WW; +54% of mean baseline value; $n = 8$; $P = 0.757$; Figure S1). No change was found for muscle histidine ($P = 0.954$) and taurine ($P = 0.431$) concentration after BA supplementation in comparison with PL, but a significant overall decrease in taurine concentration (time effect $P = 0.016$) was seen (Figure 2C).

Systemic carnosine-related metabolites analysis showed that plasma BA concentration was increased after BA supplementation (+133% of mean baseline value) in comparison with PL (+3% of mean baseline value) ($P < 0.001$) (Figure 2D). No changes were found after BA supplementation in comparison with PL for plasma histidine concentration ($P = 0.292$) or serum carnosinase activity ($P = 0.820$) (Figure 2E and 2F).

Within the BA group, no correlations of baseline muscle carnosine and plasma BA with delta muscle carnosine were found (Figure S2). Additionally, no correlation of delta plasma BA with delta muscle carnosine was seen (Figure S2).

Table 1 Baseline characteristics

	Beta-alanine (n = 21)	Placebo (n = 19)
Characteristics		
Age (years)	66 ± 5	65 ± 6
Gender (N[%male])	16[76]	14[74]
Weight (kg)	71.9 ± 13.7	75.2 ± 12.4
BMI (kg/m ²)	25.2 (21.2–29.6)	25.8 (22.9–28.8)
Whole-body LMI (kg/m ²) ^a	18.6 (15.1–20.2)	18.6 (17.0–19.8)
Whole-body LMI under 10th percentile (N[%]) ^a	1[5]	0[0]
Smoking status: S, EX, NS (N[%])	9[43], 11[52], 1[5]	7[37], 12[63], 0[0]
Hospitalization within previous 12 months: 0, 1, >1 (N[%])	16[76], 4[19], 1[5]	18[95], 1[5], 0[0]
COPD Assessment Test (pt)	15 ± 5	12 ± 7
COPD Assessment Test ≥ 18 points (N[%])	7[33]	4[21]
mMRC dyspnoea score (pt)	1 (1–2)	1 (0–2)
mMRC dyspnoea score ≥ 2 points (N[%])	5[24]	5[26]
Charlson Comorbidity Index (N)	2 (1–3)	2 (2–3)
Charlson Comorbidity Index ≥ 2 (N[%])	12[57]	15[79]
Lung function		
FEV ₁ (L)	1.56 ± 0.57	1.56 ± 0.40
FEV ₁ (%predicted)	55.2 ± 17.3	55.6 ± 10.0
FEV ₁ /FVC (%)	46.1 (38.4–62.5)	50.4 (44.7–54.7)
TLC (%predicted)	117.3 ± 18.2	117.5 ± 13.5
RV (%predicted)	181.2 ± 47.8	175.5 ± 33.6
DLCO SB (%predicted)	54.2 (41.2–59.7)	51.6 (46.0–63.8)
GOLD Stage: I, II, III, IV (N[%])	3[14], 8[38], 8[38], 2[10]	0[0], 14[74], 5[26], 0[0]
Medication use		
Inhalation: short, long, long + ICS (N[%]) ^b	0[0], 11[55], 9[45]	1[5], 11[58], 7[37]
Maintenance dose OCS or antibiotics (N[%])	4[19]	1[5]
Cholesterol (N[%])	9[43]	12[63]
Beta-blocker (N[%])	5[24]	5[26]
Other cardiac (N[%])	7[33]	13[68]
Anti-anxiety or anti-depression (N[%])	3[14]	4[21]
Anti-coagulants or anti-aggregation (N[%])	8[38]	10[53]
Total number of medications (N[%])	5 (3–8)	6 (4–7)
Muscle fibre characteristics^c		
CSA ST fibre (μm ²)	4386 (3558–5144)	4804 (3899–6281)
CSA FT fibre (μm ²)	4549 ± 1616	4613 ± 2000
CSA all fibres (μm ²)	4619 ± 1580	4911 ± 1583
% ST fibres (%)	34.7 ± 10.4	43.0 ± 14.5
Abnormally low ST fibres < 27% (N[%])	4[25]	4[21]
% ST fibre area (%)	36.3 ± 11.6	46.5 ± 18.2

BMI, body mass index; COPD, chronic obstructive pulmonary disease; CSA, cross-sectional area; DLCO SB, Diffusion capacity of the Lung for Carbon Monoxide Single Breath; EX, ex-smoker; FEV₁, forced expired volume in 1 s; FT, fast-twitch; FVC, forced vital capacity; GOLD, Global initiative for chronic Obstructive Lung Disease; ICS, inhaled corticosteroids; mMRC, modified Medical Research Council; NS, non-smoker; OCS, oral corticosteroids; RV, residual volume; S, smoker; SD, standard deviation; ST, slow-twitch; TLC, total lung capacity. Data are expressed as mean ± SD or median (quartile 1–quartile 3) or number [percentage] as appropriate.

^aAltered sample size due to not performing DXA scan due to hip prosthesis (BA: n = 21; PL: n = 18).

^bAltered sample size due to incomplete medical record (BA: n = 20; PL: n = 19).

^cAltered sample size due to poor quality and/or staining of muscle cross-sections (BA: n = 16; PL: n = 19).

Physical capacity

Maximal and submaximal cycle capacity, walking capacity (6 min walking distance), quadriceps function, and PA showed no change after BA supplementation in comparison with PL. Even when participants with a baseline constant work rate cycle test (CWRT) time to exhaustion (TTE) of 20 min were excluded (BA: n = 6; PL: n = 9), no change after BA supplementation in comparison with PL was found. All details can be found in *Table 2*.

Oxidative and carbonyl stress

Proteins affected by carbonylation (*P* = 0.966) and 4-hydroxynonenal (4HNE; *P* = 0.320) (*Figure 3*) showed no change after BA supplementation in comparison with PL.

Discussion

To the authors' knowledge, this is the first time BA supplementation has been investigated in patients with COPD. Twelve weeks of BA supplementation (3.2 g/day) did not cause side effects and was efficacious in augmenting muscle carnosine concentration (+54% of mean baseline value) in comparison with PL in patients with COPD. However, accompanied beneficial changes in exercise capacity, quadriceps function, and muscle oxidative/carbonyl stress were not observed.

Observed compliance with and absence of paresthesia after 12 weeks of BA supplementation in our study with patients with COPD is in line with the literature in young and

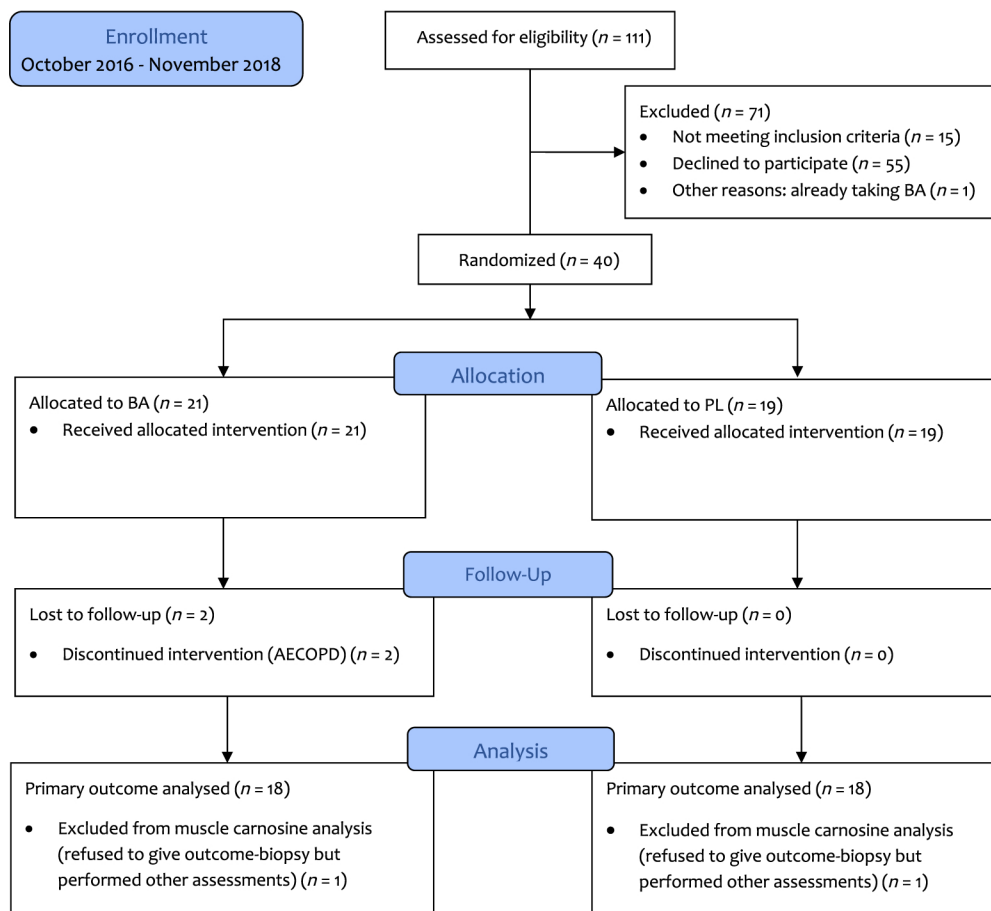


Figure 1 CONSORT flow diagram of the study. AECOPD, acute exacerbation of chronic obstructive pulmonary disease; BA, beta-alanine; PL, placebo.

older adults.^{11–13} Indeed, in two studies with older adults, no paresthesia was reported when using sustained-release BA,¹¹ the drop-out rate was minimal,¹³ and compliance with supplement intake was high (>90%).^{11,13}

Twelve weeks of BA supplementation was efficacious in augmenting muscle carnosine concentration with +54% of mean baseline value in comparison with PL in patients with COPD. This positive response of muscle carnosine concentration is within the expected normal range (+40–60%) after BA supplementation in healthy adults across the age span.^{22,23} This is also confirmed by Del Favero *et al.*, the only other study that has quantified muscle carnosine concentration after BA supplementation in healthy older adults, who reported an +85% increase in muscle carnosine concentration using the same supplementation protocol as in our study.¹¹ Interestingly, our research group showed that patients with severe to very severe COPD had a 33% lower muscle carnosine concentration in comparison with patients with mild to moderate COPD.⁵ It was observed that the muscle carnosine concentration increase after BA supplementation is similar in both severity groups, meaning patients with severe to very severe COPD manage to bring their muscle

carnosine concentration back to and above normal after 12 weeks of BA supplementation (COPD: 5.80 vs. healthy controls: 4.64 mmol/kg WW).⁵ Additionally, our study shows that patients with mild to moderate COPD, who started the intervention with a normal muscle carnosine concentration,⁵ were also able to increase their carnosine concentration. It can therefore be hypothesized that baseline muscle carnosine concentration is not a strong determinant of response to BA supplementation in patients with COPD. This is supported by the lack of correlation in our study between baseline and delta muscle carnosine (*Figure S2A*) and by previous studies in healthy adults.^{24,25}

Individual muscle carnosine concentration response to BA supplementation showed variation (*Figure 2A*). This may be explained by the plasma BA response to BA supplementation as suggested by Blancquaert *et al.*²⁶ An increase in plasma BA seems obvious in patients with COPD (*Figure 2B*), as BA uptake via the intestinal system and release in the circulation was found to be increased in all but one of the participants and increased on a group level to +133% of the mean baseline value. While this might seem evident, this is remarkable as fasted plasma samples were taken >8 h after the last

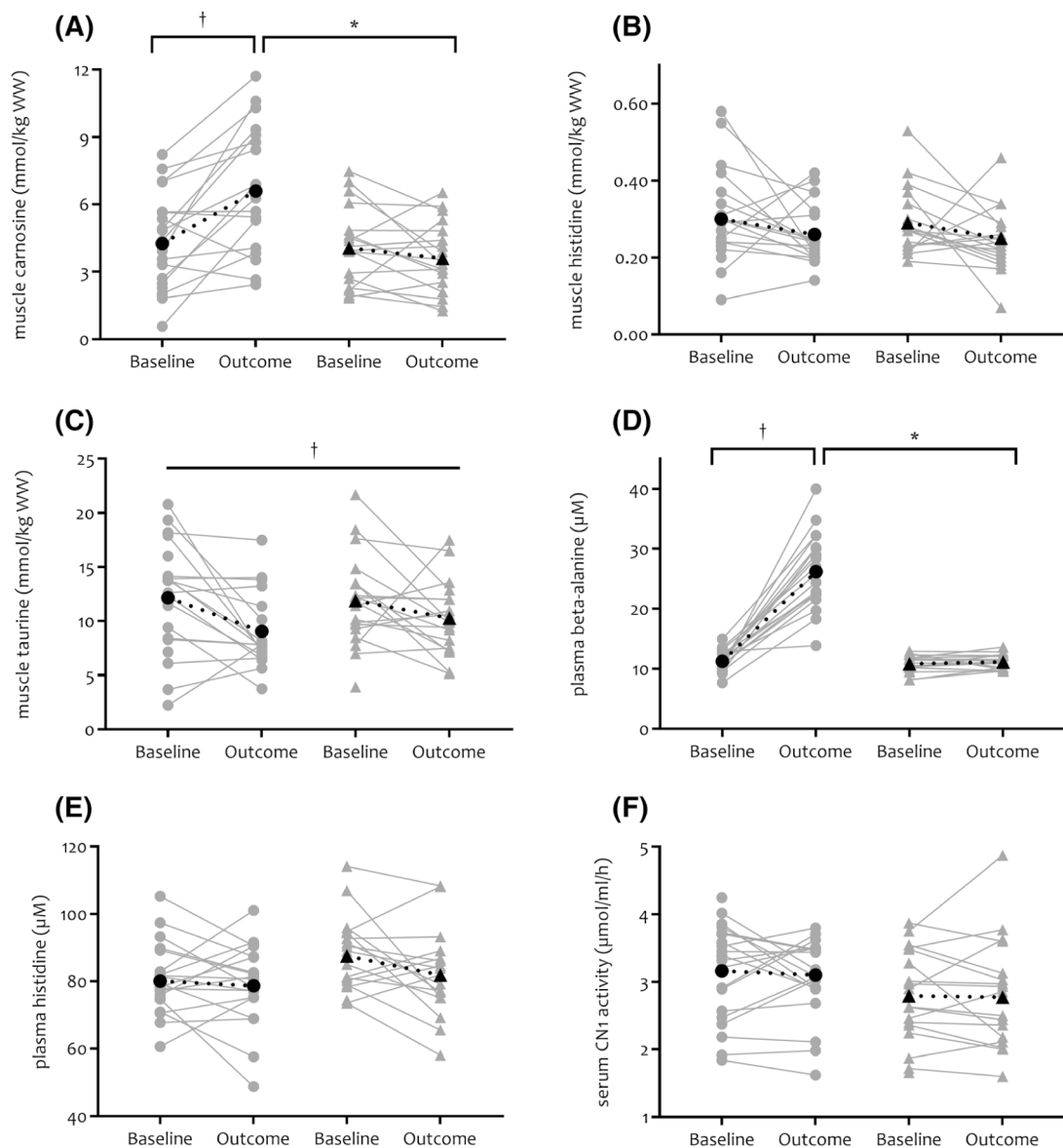


Figure 2 Effect of oral BA supplementation on muscle carnosine and related metabolites in muscle and plasma/serum in patients with chronic obstructive pulmonary disease. Muscle carnosine and related metabolites are depicted in Panels (A)–(F) (BA = circles, PL = triangles) by individual data points, and mean is shown in black and dotted line. Flat line = a main effect of time is present (†). Half tick-down line = effects of time (†) and/or group (*) were explored separately by within (baseline vs. outcome within BA and PL) or between (BA vs. PL on baseline and outcome time point) analysis when a significant interaction group \times time effect was present. BA, beta-alanine; CN1, carnosinase; PL, placebo; WW, wet weight.

supplement intake and pharmacokinetics (plasma BA is back to baseline after 5 h after acute BA supplement intake) and BA half-life (after 80 min) are rather short.²⁷ Our findings are further confirmed by those of Blancquaert *et al.*, who found that after BA supplementation (6 g/day), fasted plasma BA was elevated the morning after last BA supplement intake on Day 12 (+123% of mean baseline value) and Day 23 (+169% of mean baseline value) of the supplementation period.²⁸ Also, a study in vegetarians found that 800 mg of BA supplementation per day for 12 weeks resulted in an increase of 27.2% of fasted plasma BA.²⁹ Additionally, they showed in mice (serum)²⁶ and in humans (plasma) that

change in fasted circulating BA determined change in muscle carnosine concentration after BA supplementation (soleus; $r = 0.591$; gastrocnemius; $r = 0.442$),³⁰ suggesting that circulating BA is a good predictor of the amount of carnosine loading. These findings agree with the proposed plasma BA homeostasis hypothesis, which states that when plasma BA cannot be kept within homeostatic limits, BA is directed to transamination.²⁶ Only when this pathway is saturated, BA will be transported into the myocyte and carnosine synthesis will occur. Thus, high responders to BA supplementation are likely individuals who fail to keep circulating BA between homeostatic limits. A correlation in similar magnitude between

Table 2 Effect of oral beta-alanine supplementation on physical capacity

	Beta-alanine Baseline	Beta-alanine Outcome	Placebo Baseline	Placebo Outcome	Interaction effect	Time effect	Group effect
Cycling capacity							
VO ₂ peak-CPET (mL/kg/min) ^a	n = 20 17.6 [15.4–19.9] 89 [75–103]	n = 17 17.4 [15.5–19.2] 90 [77–102]	n = 19 18.2 [15.9–20.4] 96 [81–110]	n = 19 17.4 [15.5–19.3] 91 [79–104]	0.384	0.088	0.851
Wpeak-CPET (W) ^a	820 [665–975]	703 [539–866]	910 [751–1069]	765 [606–924]	0.782	0.014	0.646
TTE-CWRT (s)	657 [512–801]	588 [434–742]	650 [479–820]	558 [387–728]	0.858	0.215	0.450
who reached 20 min at baseline ^b							0.844
Walking capacity							
6MWD (m)	n = 21 509 [473–545]	n = 19 507 [471–543]	n = 19 503 [465–541]	n = 19 507 [469–545]	0.645	0.871	0.907
Muscle function							
Isometric quadriceps strength corrected for lean mass right leg (Nm/kg)	n = 21 19.4 [17.9–20.8]	n = 19 19.1 [17.6–20.5]	n = 18 18.6 [17.1–20.2]	n = 18 18.6 [17.0–20.1]	0.724	0.613	0.540
Isokinetic quadriceps endurance-total work corrected for lean mass right leg (J/kg) ^c	151 [133–169]	148 [129–166]	154 [135–173]	152 [133–172]	0.839	0.500	0.772
Physical activity							
Step count (steps/day)	n = 19 6464 [4623–8305] 32 [20–44]	n = 17 6106 [4662–7549] 26 [13–38]	n = 17 4974 [3028–6921] 13 [0–26]	n = 17 4620 [3127–6113] 10 [–3 to 23]	0.996	0.417	0.184
MVPA (min/day)					0.689	0.164	0.042

6MWD, 6 min walking distance; CPET, cardiopulmonary exercise test; CWRT, constant work rate cycle test; J, joule; MVPA, moderate to vigorous physical activity; Nm, Newton metre; TTE, time to exhaustion; VO₂, volume oxygen consumption; W, wattage.

Data are expressed as mean [95% confidence interval]. *P*-values in bold are significant at *P* < 0.05.

^aAltered sample size due to absence of a participant on the CPET test moment (PL outcome: *n* = 18).

^bAltered sample size due to exclusion of participants who reached 20 min at baseline (BA baseline: *n* = 14; BA outcome: *n* = 12; PL baseline: *n* = 10; PL outcome: *n* = 10).

^cAltered sample size due to invalid isokinetic test due to incorrect execution (BA baseline: *n* = 16; BA outcome: *n* = 14; PL baseline: *n* = 13; PL outcome: *n* = 10).

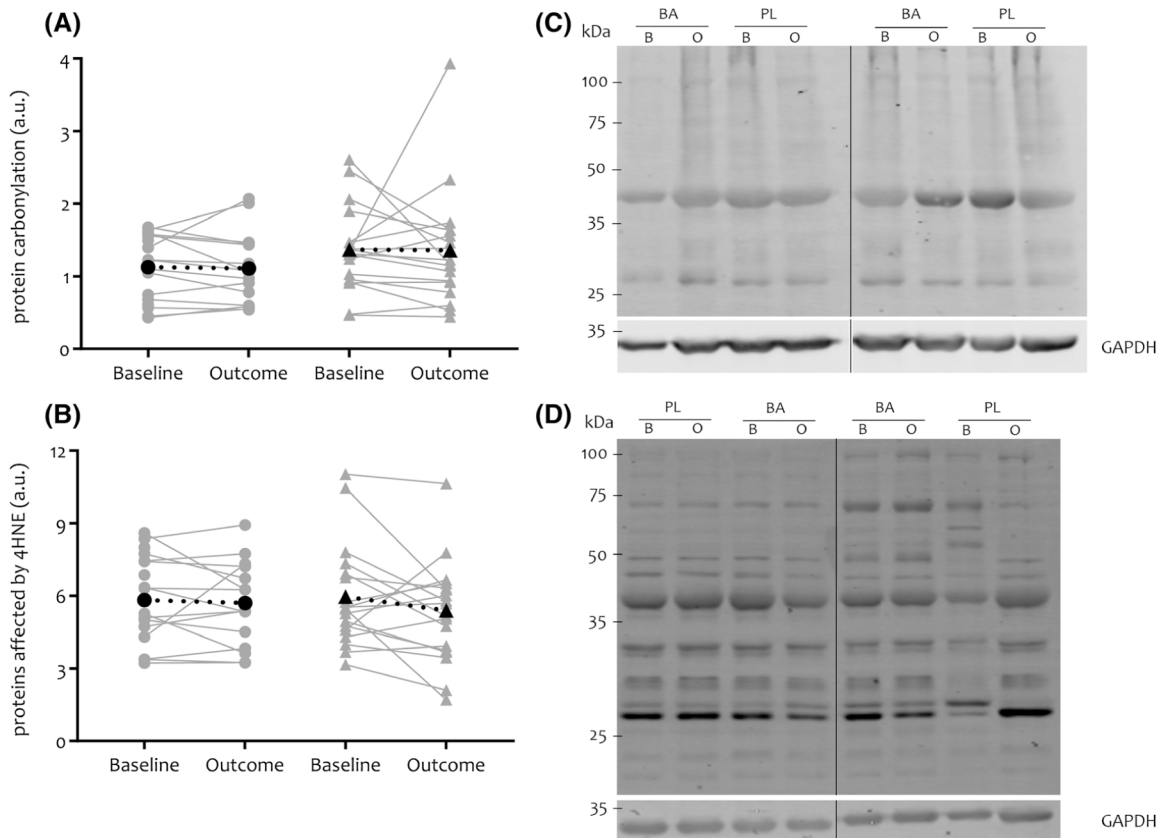


Figure 3 Effect of oral BA supplementation on oxidative and carbonyl stress in patients with COPD. Muscle proteins affected by carbonylation (Panels A–C) and 4HNE (B–D) (BA = circles, PL = triangles). Panels (A) and (B) show the quantification of muscle proteins affected by carbonylation and 4HNE relative to loading control GAPDH by individual data points, and mean is shown in black and dotted line. Panels (C) and (D) show a representative western blot (in total, 10 western blots were performed for both carbonylation and 4HNE) for muscle proteins affected by carbonylation and 4HNE, respectively. Baseline (B) and outcome (O) intervention samples of four patients with COPD (two patients in each group: BA/PL) were loaded per blot. Black vertical lines are lines where the blot was cut. 4HNE, 4-hydroxynonenal; a.u., arbitrary units; BA, beta-alanine; COPD, chronic obstructive pulmonary disease; GAPDH, glyceraldehyde 3-phosphate dehydrogenase; kDa, kilodalton; PL, placebo.

a change in plasma BA and a change in muscle carnosine after BA supplementation was however not observed in our patients with COPD ($r = 0.373$; $P = 0.127$). Whether this means that the proposed plasma BA homeostasis hypothesis does not apply in patients with COPD needs further corroboration, as m. vastus lateralis biopsies were taken in our study rather than from the soleus/gastrocnemius as in Blancquaert *et al.*,²⁸ and our study was not powered to investigate this.

Muscle carnosine concentration augmentation after BA supplementation did not lead to an enhancement of our co-primary (maximal and submaximal cycle capacity) or secondary (6 min walking distance, PA, and quadriceps function) physical capacity outcomes. However, based on the available literature in healthy older adults, enhancement of our co-primary physical capacity outcomes was expected. Indeed, an increase in TTE on a maximal incremental exercise test (treadmill: +12.2%) and submaximal constant work rate exercise test (treadmill: +36.5% and cycle: +24.0%), and in physical working capacity at the fatigue threshold (cycling: +13.6–28.5%) has been reported.^{11,13,14,17} In healthy (older) adults,

an improved intramuscular pH-buffer capacity is expected to be the reason why exercise capacity improves due to increased muscle carnosine concentration.^{9,10} Patients with COPD suffer from earlier and greater reliance on the anaerobic metabolism during exercise, which in turn leads to muscle acidosis, elevated carbon dioxide levels, and an increased ventilatory load.² Therefore, it was hypothesized that a muscle carnosine concentration augmentation would lead to an increased intramuscular buffering capacity to counteract the observed early muscle acidosis during exercise in patients with COPD. In turn, it was hypothesized that this would lead to a lower work of breathing and subsequently to a lower ventilatory load for the patient.³¹ We, however, did not find an improvement on the maximal and submaximal cycle test in patients with COPD after BA supplementation. A possible explanation for this is the high ventilatory load patients with COPD endure during exercise as a limiting factor.³² Based on our findings, whether a muscle carnosine concentration augmentation led to an increase in intramuscular buffering capacity remains speculative, as we did not measure the acidosis

level during exercise. The capillary blood lactate response during maximal and submaximal cycle tests was assessed and was not different between the BA and PL groups (data not shown). Measurements of arterial blood gases would have been warranted to make assumptions on whether augmented carnosine was actually utilized as an intramuscular buffer.

It could also be speculated that carnosine was utilized within its role as an antioxidant during exercise. In our study, BA supplementation, however, did not show any beneficial effect on the expression of muscle proteins affected by carbonylation or 4HNE. The quenching role of augmented muscle carnosine after BA supplementation has already been proven in healthy adults by elevation of muscle carnosine-conjugate formation with acrolein and 4HNE after acute high-intensity exercise.^{33,34} This was however not measured on a basal level and additional literature is scarce or even non-existing in the older adult population. In fact, the current study is the first to have measured basal expression of muscle proteins affected by carbonylation or 4HNE, and our results should therefore be corroborated by future research.

Furthermore, not finding improvements in maximal and submaximal exercise capacity could also be due to methodological considerations. With regard to the BA supplementation intervention, we are convinced that the dosing strategy and intervention duration was sufficient to expect beneficial changes in exercise capacity among healthy subjects.¹¹ The current data suggest this is not the case in patients with COPD. In relation to outcome methodology, the CWRT with a 20 min closed end is known to have a ceiling effect and could have impacted our findings. Nevertheless, sub-analysis excluding patients with COPD who reached a CWRT TTE of 20 min at baseline also showed no improvements in TTE after BA supplementation (Table 2).

Investigating muscle function outcomes (quadriceps strength and endurance) also deserves attention, as patients experience a lower ventilatory burden during these exercises.^{35,36} In our study, however, we did not observe any change in quadriceps isometric strength nor isokinetic endurance after BA supplementation. Studies in healthy older adults investigating muscle function have looked at functional tests and not at isolated quadriceps strength or endurance assessment.^{11,13} Del Favero *et al.* showed no improvements in the Timed Up and Go test and the 30 s sit-to-stand test,¹¹ while McCormack *et al.* showed a 22% improvement in the 30 s sit-to-stand test.¹³ Functional test results in healthy older adults are scarce and inconsistent. In young adults and athletes, quadriceps strength and endurance results are also contradictory.¹⁵ Although the literature is contradictory, it can be hypothesized that quadriceps isometric strength would not benefit from a muscle carnosine augmentation after BA supplementation due to the short duration of assessment (i.e. it relies on the phosphocreatine energy system) and it is greatly determined by the cross-sectional area of the involved muscles. For quadriceps isokinetic endurance, however, a

change might have been expected when considering the working mechanism of muscle carnosine, as this endurance assessment induces muscle acidosis and contractile fatigue. A possible reason for not finding a change might be the implemented isokinetic protocol. A 20-repetition knee extension/flexion protocol was executed at 180°/s (duration = 20 s) and induces fatigue. This protocol duration may have been too short to observe the full intramuscular buffering capacity of carnosine. This is also supported by a meta-analysis, which found that exercise tasks lasting <60 s did not improve after BA supplementation due to muscle acidosis not being the primary limiting factor.³⁷

When collating our primary and secondary physical capacity findings, it remains difficult to conclude how carnosine was utilized in the muscle during exercise and why no improvement was observed in physical capacity after BA supplementation in patients with COPD. However, not finding an improvement in quadriceps endurance, which is along with central adaptations a requisite to improve whole-body endurance capacity, indicates that carnosine may have more predominant roles (e.g. reactive aldehyde quenching) than intramuscular buffering during exercise in patients with COPD.^{33,34}

Study limitations and considerations for future research

Potential biases encountered in this study include the recruitment of stable patients at the outpatient pulmonology consultation, as shown by the moderate symptom burden and well-preserved physical capacity (no participant walked <350 m³⁸) and lean mass (one participant <10th percentile³⁹) of the participants. This may thus limit the generalizability of our findings to, for example, patients with COPD starting pulmonary rehabilitation.

To take future steps towards the potential clinical use of BA supplementation, it may be necessary to perform a study including only patients with reduced exercise capacity and whom are halted by leg fatigue during exercise to investigate whether augmented carnosine by BA supplementation leads to improved pH-buffer capacity and as a result improved exercise capacity. Furthermore, the addition of an exercise training stimulus (as part of pulmonary rehabilitation) might be needed alongside BA supplementation when aiming to improve exercise capacity. Bex *et al.* suggested that trained muscles load carnosine better than those that are untrained, possibly due to increased blood flow to contracting muscles.^{40,41} A recent study by Nemezio *et al.*, however, showed that muscle carnosine loading was equal in the active (deltoid) and inactive (quadriceps) limbs of paraplegic athletes after BA supplementation.⁴² As literature is contradictory, scarce, and the 'untrained' model used in both studies is different, it remains interesting to investigate whether BA supplementation is a promising exercise training aid in pa-

tients with COPD.⁴³ If so, patients might be able to train at higher intensities leading to greater improvement in exercise capacity and ultimately quality of life.

Conclusions

Twelve weeks of BA supplementation is efficacious in augmenting muscle carnosine (+54% increase of mean baseline value) without side effects in patients with COPD in comparison with PL and brings muscle carnosine concentration back to and above normal in carnosine-deficient patients. However, accompanied beneficial changes in exercise capacity, quadriceps function, and muscle oxidative/carbonyl stress were not observed.

Acknowledgements

The authors acknowledge Dr. Aumann J. (Jessa Hospital, Hasselt, Belgium) for assisting with recruitment of patients, and all the health care professionals working at ReGo, Rehabilitation and Health Centre, of Jessa Hospital (Hasselt, Belgium), for their willingness to provide exercise testing equipment and space. Also, the UBilim is acknowledged for providing storage and release of all human biological material used in this publication (Linsen L, Vanhees K, Vanoppen E, Ulenaers K, Driessens S, Penders J, et al. Raising to the Challenge: Building a Federated Biobank to Accelerate Translational Research-The University Biobank Limburg. *Front Med (Lausanne)*. 2019;6:224. doi:10.3389/fmed.2019.00224). Natural Alternatives International (NAI) is gratefully acknowledged for providing us with beta-alanine and placebo supplements in blinded containers. Ms. Bogaers A. of Hasselt University (Diepenbeek, Belgium) is gratefully acknowledged for performing blood sampling and dual-energy x-ray absorptiometry scanning. Ms. Volckaert A. and Everaert I. of Ghent University (Ghent, Belgium) are gratefully acknowledged for performing and assisting with the HPLC and serum carnosinase activity analyses. Master students, Eerdeken L., Grauwels W., Putzeys J., Verwimp E., Gillis E., Vanbeckevoort E., Allaerts M. (MA), and Veugen S. (SV) of Hasselt University (Diepenbeek, Belgium), are thanked for their contributions related to data acquisition and extraction. Other members of the research teams under supervision of Prof.

Dr. Derave W. of Ghent University (Ghent, Belgium) and Prof. Dr. Hayot M. of Montpellier University (Montpellier, France) are acknowledged for providing support and insight in their topics of expertise. Dr. Andrew Strong (Umeå University) is thanked for the English language revision.

The authors of this manuscript certify that they comply with the ethical guidelines for authorship and publishing in the *Journal of Cachexia, Sarcopenia and Muscle*.⁴⁴

Conflict of interest

Jana De Brandt, Wim Derave, Frank Vandenabeele, Pascal Pomiès, Laura Blancquaert, Charly Keytsman, Marina S. Barusso-Grüniger, Fabiano F. de Lima, Martijn A. Spruit, and Chris Burtin declare that they have no conflict of interest. Maurice Hayot has received research grants from Bastide Medical, which are not related to the current project; personal fees from AstraZeneca for participation to scientific lectures; financial support for congress participation from SOS Oxygène, Eole Santé, Boehringer Ingelheim, GlaxoSmithKline, and AstraZeneca; and hospitalities during local scientific meetings from ALK-Abelló, Actelion Pharmaceuticals France, Vifor Fresenius Medical Care Renal Pharma, Sanofi Aventis France, Novartis Pharma, LVL Medical Sud, Chiesi, and SOS Oxygene Mediterranee.

Funding

De Brandt J. is funded by the Flemish government. The Research of FWO (Research Foundation - Flanders) Aspirant De Brandt J. is sponsored by FWO, Grant #11B4718N. Burtin C. is supported by Limburgs Kankerfonds. De Lima F.F. is supported by São Paulo Research Foundation (FAPESP), Grant #2019/10744-3.

References

1. Maltais F, Decramer M, Casaburi R, Barreiro E, Burelle Y, Debigare R, et al. An official American Thoracic Society/European Respiratory Society statement: update on limb muscle dysfunction in chronic obstructive pulmonary disease. *Am J Respir Crit Care Med* 2014;**189**: e15–e62.
2. Maltais F, Simard AA, Simard C, Jobin J, Desgagnés P, LeBlanc P. Oxidative capacity of the skeletal muscle and lactic acid kinetics during exercise in normal subjects and in patients with COPD. *Am J Respir Crit Care Med* 1996;**153**: 288–293.

3. Boldyrev AA, Aldini G, Derave W. Physiology and pathophysiology of carnosine. *Physiol Rev* 2013;**93**:1803–1845.
4. C. Harris R, Dunnett M, Greenhaff PL. Carnosine and taurine contents in individual fibres of human vastus lateralis muscle. *J Sports Sci* 1998;**16**:639–643.
5. De Brandt J, Burtin C, Pomiès P, Vandenameele F, Verboven K, Aumann J, et al. Carnosine, oxidative and carbonyl stress, antioxidants and muscle fiber characteristics of quadriceps muscle of patients with COPD. *J Appl Physiol* 1985;**2021**.
6. Nagasawa T, Yonekura T, Nishizawa N, Kitts DD. In vitro and in vivo inhibition of muscle lipid and protein oxidation by carnosine. *Mol Cell Biochem* 2001;**225**:29–34.
7. Aldini G, Facino RM, Beretta G, Carini M. Carnosine and related dipeptides as quenchers of reactive carbonyl species: from structural studies to therapeutic perspectives. *Biofactors* 2005;**24**:77–87.
8. Ghodsi R, Kheirouri S. Carnosine and advanced glycation end products: a systematic review. *Amino Acids* 2018;**50**:1177–1186.
9. Mannion AF, Jakeman PM, Dunnett M, Harris RC, Willan PL. Carnosine and anserine concentrations in the quadriceps femoris muscle of healthy humans. *Eur J Appl Physiol Occup Physiol* 1992;**64**:47–50.
10. Baguet A, Koppo K, Pottier A, Derave W. β -Alanine supplementation reduces acidosis but not oxygen uptake response during high-intensity cycling exercise. *Eur J Appl Physiol* 2010;**108**:495–503.
11. del Favero S, Roschel H, Solis MY, Hayashi AP, Artioli GG, Otaduy MC, et al. Beta-alanine (Carnosyn) supplementation in elderly subjects (60–80 years): effects on muscle carnosine content and physical capacity. *Amino Acids* 2012;**43**:49–56.
12. Dolan E, Swinton PA, Painelli V, Stephens Hemingway B, Mazzolani B, Infante Smaira F, et al. A systematic risk assessment and meta-analysis on the use of oral β -alanine supplementation. *Adv Nutr* 2019;**10**:452–463.
13. McCormack WP, Stout JR, Emerson NS, Scanlon TC, Warren AM, Wells AJ, et al. Oral nutritional supplement fortified with beta-alanine improves physical working capacity in older adults: a randomized, placebo-controlled study. *Exp Gerontol* 2013;**48**:933–939.
14. Stout JR, Graves BS, Smith AE, Hartman MJ, Cramer JT, Beck TW, et al. The effect of beta-alanine supplementation on neuromuscular fatigue in elderly (55–92 years): a double-blind randomized study. *J Int Soc Sports Nutr* 2008;**5**:21.
15. Trexler ET, Smith-Ryan AE, Stout JR, Hoffman JR, Wilborn CD, Sale C, et al. International society of sports nutrition position stand: beta-alanine. *J Int Soc Sports Nutr* 2015;**12**:30.
16. Saunders B, Elliott-Sale K, Artioli GG, Swinton PA, Dolan E, Roschel H, et al. β -alanine supplementation to improve exercise capacity and performance: a systematic review and meta-analysis. *Br J Sports Med* 2017;**51**:658–669.
17. Furst T, Massaro A, Miller C, Williams BT, LaMacchia ZM, Horvath PJ. β -Alanine supplementation increased physical performance and improved executive function following endurance exercise in middle aged individuals. *J Int Soc Sports Nutr* 2018;**15**:32.
18. Munuswamy R, De Brandt J, Burtin C, Derave W, Aumann J, Spruit MA, et al. Monomeric CRP is elevated in patients with COPD compared to non-COPD control persons. *J Inflamm Res* 2021;**14**:4503–4507.
19. GOLD. *The Global Strategy for Diagnosis, Management and Prevention of COPD*, 2022 report. 2022.
20. Seymour JM, Spruit MA, Hopkinson NS, Natanek SA, Man WD, Jackson A, et al. The prevalence of quadriceps weakness in COPD and the relationship with disease severity. *Eur Respir J* 2010;**36**:81–88.
21. van den Borst B, Slot IG, Hellwig VA, Vosse BA, Kelders MC, Barreiro E, et al. Loss of quadriceps muscle oxidative phenotype and decreased endurance in patients with mild-to-moderate COPD. *J Appl Physiol* 1985;**2013**:1319–1328.
22. Harris RC, Tallon MJ, Dunnett M, Boobis L, Coakley J, Kim HJ, et al. The absorption of orally supplied β -alanine and its effect on muscle carnosine synthesis in human vastus lateralis. *Amino Acids* 2006;**30**:279–289.
23. Perim P, Marticorena FM, Ribeiro F, Barreto G, Gobbi N, Kerkick C, et al. Can the skeletal muscle carnosine response to beta-alanine supplementation be optimized? *Front Nutr* 2019;**6**:135.
24. Rezende NS, Swinton P, de Oliveira LF, da Silva RP, da Eira SV, Nemezo K, et al. The muscle carnosine response to beta-alanine supplementation: a systematic review with Bayesian individual and aggregate data E-max model and meta-analysis. *Front Physiol* 2020;**11**:913.
25. Stellingwerff T, Anwander H, Egger A, Buehler T, Kreis R, Decombaz J, et al. Effect of two β -alanine dosing protocols on muscle carnosine synthesis and washout. *Amino Acids* 2012;**42**:2461–2472.
26. Blanquaert L, Baba SP, Kwiatkowski S, Stautemas J, Stegen S, Barbaresi S, et al. Carnosine and anserine homeostasis in skeletal muscle and heart is controlled by β -alanine transamination. *J Physiol* 2016;**594**:4849–4863.
27. Decombaz J, Beaumont M, Vuichoud J, Bouisset F, Stellingwerff T. Effect of slow-release β -alanine tablets on absorption kinetics and paresthesia. *Amino Acids* 2012;**43**:67–76.
28. Blanquaert L, Everaert I, Missinne M, Baguet A, Stegen S, Volckaert A, et al. Effects of histidine and β -alanine supplementation on human muscle carnosine storage. *Med Sci Sports Exerc* 2017;**49**:602–609.
29. Blanquaert L, Baguet A, Bex T, Volckaert A, Everaert I, Delanghe J, et al. Changing to a vegetarian diet reduces the body creatine pool in omnivorous women, but appears not to affect carnitine and carnosine homeostasis: a randomised trial. *Br J Nutr* 2018;**119**:759–770.
30. Blanquaert L. *Muscle Carnosine Homeostasis: A Unique Set of Regulatory Mechanisms*. Ghent: Ghent University; 2017. p 201.
31. Jaitovich A, Barreiro E. Skeletal muscle dysfunction in chronic obstructive pulmonary disease. What we know and can do for our patients. *Am J Respir Crit Care Med* 2018;**198**:175–186.
32. O'Donnell DE, Laveneziana P, Webb K, Neder JA. Chronic obstructive pulmonary disease: clinical integrative physiology. *Clin Chest Med* 2014;**35**:51–69.
33. Hoetker D, Chung W, Zhang D, Zhao J, Schmidtke VK, Riggs DW, et al. Exercise alters and β -alanine combined with exercise augments histidyl dipeptide levels and scavenges lipid peroxidation products in human skeletal muscle. *J Appl Physiol* 1985;**2018**.
34. Carvalho VH, Oliveira AHS, de Oliveira LF, da Silva RP, Di Mascio P, Gualano B, et al. Exercise and β -alanine supplementation on carnosine-acrolein adduct in skeletal muscle. *Redox Biol* 2018;**18**:222–228.
35. Probst VS, Troosters T, Pitta F, Decramer M, Gosselink R. Cardiopulmonary stress during exercise training in patients with COPD. *Eur Respir J* 2006;**27**:1110–1118.
36. Houchen-Wolloff L, Sandland CJ, Harrison SL, Menon MK, Morgan MD, Steiner MC, et al. Ventilatory requirements of quadriceps resistance training in people with COPD and healthy controls. *Int J Chron Obstruct Pulmon Dis* 2014;**9**:589–595.
37. Hobson RM, Saunders B, Ball G, Harris RC, Sale C. Effects of β -alanine supplementation on exercise performance: a meta-analysis. *Amino Acids* 2012;**43**:25–37.
38. Spruit MA, Polkey MI, Celli B, Edwards LD, Watkins ML, Pinto-Plata V, et al. Predicting outcomes from 6-minute walk distance in chronic obstructive pulmonary disease. *J Am Med Dir Assoc* 2012;**13**:291–297.
39. Ofenheimer A, Breyer-Kohansal R, Hartl S, Burghuber OC, Krach F, Schrott A, et al. Reference values of body composition parameters and visceral adipose tissue (VAT) by DXA in adults aged 18–81 years—results from the LEAD cohort. *Eur J Clin Nutr* 2020.
40. Bex T, Chung W, Baguet A, Achten E, Derave W. Exercise training and beta-alanine-induced muscle carnosine loading. *Front Nutr* 2015;**2**:13.
41. Bex T, Chung W, Baguet A, Stegen S, Stautemas J, Achten E, et al. Muscle carnosine loading by beta-alanine supplementation is more pronounced in trained vs. untrained muscles. *J Appl Physiol* 1985;**2014**:204–209.
42. Nemezo K, Yamaguchi GC, Ramkrapes APB, Schulz ML, Baptista IL, Riani LA, et al. The role of chronic muscle (in)activity on carnosine homeostasis: a study with spinal-cord injured athletes. *Am J Physiol Regul Integr Comp Physiol* 2021.
43. Meys R, Stoffels AAF, de Brandt J, van Hees HWH, Franssen FME, Sillen MJH, et al. Beta-alanine supplementation in patients

with COPD receiving non-linear periodised exercise training or neuromuscular electrical stimulation: protocol of two randomised, double-blind, placebo-

controlled trials. *BMJ Open* 2020;**10**: e038836.
44. von Haehling S, Morley JE, Coats AJS, Anker SD. Ethical guidelines for publishing in the

Journal of Cachexia, Sarcopenia and Muscle: update 2021. *J Cachexia Sarcopenia Muscle* 2021;**12**:2259–2261.