



HAL
open science

On the optimality and practicability of mutual information analysis in some scenarios

Èloi de Chèrisey, Sylvain Guilley, Annelie Heuser, Olivier Rioul

► **To cite this version:**

Èloi de Chèrisey, Sylvain Guilley, Annelie Heuser, Olivier Rioul. On the optimality and practicability of mutual information analysis in some scenarios. *Cryptography and Communications - Discrete Structures, Boolean Functions and Sequences*, 2018, 10 (1), pp.101-121. 10.1007/s12095-017-0241-x . hal-03750327

HAL Id: hal-03750327

<https://hal.science/hal-03750327v1>

Submitted on 12 Aug 2022

HAL is a multi-disciplinary open access archive for the deposit and dissemination of scientific research documents, whether they are published or not. The documents may come from teaching and research institutions in France or abroad, or from public or private research centers.

L'archive ouverte pluridisciplinaire **HAL**, est destinée au dépôt et à la diffusion de documents scientifiques de niveau recherche, publiés ou non, émanant des établissements d'enseignement et de recherche français ou étrangers, des laboratoires publics ou privés.

On the optimality and practicability of mutual information analysis in some scenarios

Éloi de Chérisey¹ · Sylvain Guilley^{1,2} ·
Annelie Heuser¹ · Olivier Rioul¹

Abstract The best possible side-channel attack maximizes the success rate and would correspond to a maximum likelihood (ML) distinguisher if the leakage probabilities were totally known or accurately estimated in a profiling phase. When profiling is unavailable, however, it is not clear whether Mutual Information Analysis (MIA), Correlation Power Analysis (CPA), or Linear Regression Analysis (LRA) would be the most successful in a given scenario. In this paper, we show that MIA coincides with the maximum likelihood expression when leakage probabilities are replaced by online estimated probabilities. Moreover, we show that the calculation of MIA is lighter than the computation of the maximum likelihood. We then exhibit two case-studies where MIA outperforms CPA. One case is when the leakage model is known but the noise is not Gaussian. The second case is when the leakage model is partially unknown and the noise is Gaussian. In the latter scenario MIA is more efficient than LRA of any order.

Keywords Side-channel analysis · Unprofiled distinguishers · MIA · CPA · LRA · Maximum likelihood · Complexity

✉ Éloi de Chérisey
eloi.de-cherisey@mines-telecom.fr

Sylvain Guilley
sylvain.guilley@secure-ic.com

Annelie Heuser
annelie.heuser@irisa.fr

Olivier Rioul
olivier.rioul@telecom-paristech.fr

¹ Télécom ParisTech, LTCI, CNRS, Université Paris-Saclay, 75 013 Paris, France

² Think Ahead Business Line, Secure-IC, 15 rue Claude Chappe, Bâtiment B, 35 510 Cesson-Sévigné, France

1 Introduction

Many embedded systems implement cryptographic algorithms, which use secret keys that must be protected against extraction. Side-channel analysis (SCA) is one effective threat: physical quantities, such as instant power or radiated electromagnetic field, leak outside the embedded system boundary and reveal information about internal data. SCA consists in exploiting the link between the *leakage* signal and key-dependent internal data called *sensitive variables*.

The cryptographic algorithm is generally public information, whereas the implementation details are kept secret. For high-end security products, the confidentiality of the design is mandated by certification schemes, such as the Common Criteria [5]. For instance, to comply with ALC_DVS (Life-Cycle support – Development Security) requirement, the developer must provide a documentation that describes “*all the physical, procedural, personnel, and other security measures that are necessary to protect the confidentiality and integrity of the TOE (target of evaluation) design and implementation in its development environment*” [5, clause 2.1 C at page 141]. In particular, an attacker does not have enough information to precisely model the leakage of the device. On commercial products certified at highest evaluation assurance levels (EAL4+ or EAL5+), the attacker cannot set specific secret key values hence cannot profile the leakage.¹ Therefore, many side-channel attacks can only be performed online using some distinguisher.

Correlation Power Analysis (CPA) [1] is one common side-channel distinguisher. It is known [10, Theorem 5] that its *optimality* holds only for a specific noise model (Gaussian) and for a specific knowledge of the deterministic part of the leakage—namely it should be perfectly known up to an unknown scaling factor and an unknown offset.

Linear Regression Analysis (LRA) [6] has been proposed in the context where the leakage model is drifting apart from a Hamming weight model. Its parametric structure and ability to include several basis functions makes it a very powerful tool, that can adjust to a broad range of leakage models when the additive noise is Gaussian. Incidentally, CPA may be seen as a 2-dimensional LRA [10].

When both model and noise are partially or fully unknown, generic distinguishers have been proposed, such as Mutual Information Analysis (MIA) [8], Kolmogorov-Smirnov test [20, 23] or Cramér-von-Mises test [20, Section 3.3.]. Thorough investigations have been carried out (e.g., [2, 13, 21]) to identify strengths and weaknesses of various distinguishers in various scenarios, including empirical comparisons. In keeping with these results, we aim at showing some *mathematical justification* regarding MIA versus CPA and LRA. Our goal is thus to structure the field of attacks, by providing theoretical motivations why attacks strength may differ, irrespective of the particular trace datasets.

Contributions In this article, we derive MIA anew as the distinguisher which maximizes the success rate when the exact probabilities are replaced by online estimations. In order to assess the practicability of this mathematical result, we show two scenarios where MIA can outperform its competitors CPA and LRA, which themselves do not estimate probabilities.

¹Obviously, this hypothesis only holds provided the device manufacturer does not reuse the same cryptographic engine in an open platform, such as a JavaCard, where the user is able to use the cryptographic API at its will.

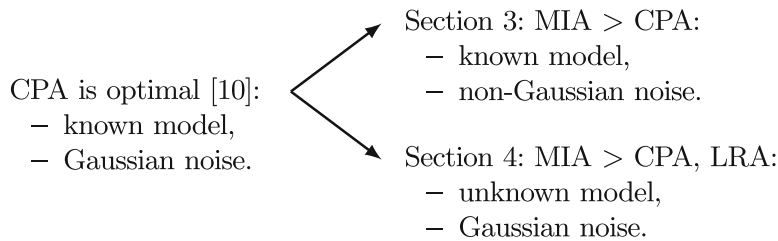


Fig. 1 Illustration of two practical situations where MIA can defeat CPA

In these scenarios, we challenge the two hypotheses needed for CPA to be optimal: additive Gaussian noise and perfect knowledge of the model up to an affine transformation. This is illustrated in Fig. 1.

Last, we extend the fast computation trick presented in [11] to MIA: the distinguisher is only computed from time to time based on histograms obtained by accumulation, where the accumulated histograms are shared for all the key guesses.

Organization The remainder of this paper is organized as follows. Section 2 provides notations, assumptions, and the rigorous mathematical derivation that MIA reduces to a ML distinguisher, where exact leakage probabilities are replaced by online probabilities. Section 3 studies two examples where the attacker knows the one-bit model under non-Gaussian algorithmic noise, and for which MIA is shown to outperform CPA. Section 4 provides a scenario in which the leakage model is partially unknown under additive Gaussian noise, and where MIA outperforms CPA and LRA. Last, in Section 5, we propose a fast MIA computation deduced from our mathematical rewriting allowing to factor several computations. Section 6 concludes.

2 Optimality of mutual information analysis

2.1 Notations and assumptions

We assume that the attacker has at his disposal \tilde{q} independent *online* leakage measurements² $\tilde{\mathbf{x}} = (\tilde{x}_1, \dots, \tilde{x}_{\tilde{q}})$ ³ for some sequence of independent and uniformly distributed n -bit text words $\tilde{\mathbf{t}} = (\tilde{t}_1, \dots, \tilde{t}_{\tilde{q}})$ (random but known). The n -bit secret key k^* is fixed but unknown.

We do not make any precise assumption on the leakage model—in particular the attacker is *not* able to estimate the actual probability density in a profiling phase. Instead we choose an algorithmic-specific function f and a device-specific function φ to compute, *for each key hypothesis* k , sensitive values $\tilde{\mathbf{y}} = (\tilde{y}_1, \dots, \tilde{y}_{\tilde{q}})$ by the formula

$$\tilde{\mathbf{y}} = \varphi(f(k, \tilde{\mathbf{t}})), \quad (1)$$

that is, $\tilde{y}_i = \varphi(f(k, \tilde{t}_i))$ for all $i = 1, \dots, \tilde{q}$. In practice, a suitable choice of φ should be optimized depending on some leakage model but in what follows, f and φ can be taken arbitrarily such that they fulfill the following *Markov condition*.

Assumption 1 (Markov condition) *The leakage $\tilde{\mathbf{x}}$ depends on the actual secret key k^* only through the computed model $\tilde{\mathbf{y}} = \varphi(f(k^*, \tilde{\mathbf{t}}))$.*

²We comply with the usual notations of [7] where offline quantities are indicated with a hat, whereas online quantities are indicated with a tilde. In this paper, there is no profiling phase hence no offline quantities.

³We use bold letters to indicate vectors while scalars are presented using small italic letters.

Thus, while the conditional distribution $\mathbb{P}_k(\tilde{\mathbf{x}}|\tilde{\mathbf{t}})$ depends on the value k of the secret key, the expression $\mathbb{P}(\tilde{\mathbf{x}}|\tilde{\mathbf{y}})$ depends on k only through $\tilde{\mathbf{y}} = \varphi(f(k, \tilde{\mathbf{t}}))$. If we let $\mathbb{P}_k(\tilde{\mathbf{x}}, \tilde{\mathbf{t}})$ be the joint probability distribution of $\tilde{\mathbf{x}}$ and $\tilde{\mathbf{t}}$ when $k^* = k$, one has the Fisher factorization [3]

$$\mathbb{P}_k(\tilde{\mathbf{x}}, \tilde{\mathbf{t}}) = \mathbb{P}(\tilde{\mathbf{t}})\mathbb{P}_k(\tilde{\mathbf{x}}|\tilde{\mathbf{t}}) = \mathbb{P}(\tilde{\mathbf{t}})\mathbb{P}(\tilde{\mathbf{x}}|\tilde{\mathbf{y}}) \quad \text{where } \tilde{\mathbf{y}} = \varphi(f(k, \tilde{\mathbf{t}})). \quad (2)$$

In the latter expression we have $\mathbb{P}(\tilde{\mathbf{t}}) = 2^{-\tilde{q}n}$ since all text n -bit words are assumed independent and identically uniformly distributed.

In the case of an additive noise model, we simply have $\tilde{\mathbf{x}} = \tilde{\mathbf{y}} + \tilde{\mathbf{n}}$ where $\tilde{\mathbf{n}}$ is the noise vector, and the Markov condition is obviously satisfied. In general, in order to fulfill the Markov condition the attacker needs some knowledge on the actual leakage model. We give two examples regarding the Markov condition:

Example 1 If leakage x_i is linked to t_i and k^* through the relationship $x_i = w_H(k^* \oplus t_i) + n_i$ for all $i = 1, \dots, \tilde{q}$, where w_H is the Hamming weight and n_i is the noise (independent of t_i), then both models $y_i = k \oplus t_i$ and $y_i = w_H(k \oplus t_i)$ satisfy the Markov condition.⁴ Sections 3 and 4 give other, more sophisticated, examples that satisfy the Markov condition.

Example 2 In the same scenario as in Example 1, consider the bit-dropping strategy (called 7LSB in [8] and used in [18, 22]). Then e.g., $y_i = (k \oplus t_i)[1 : 7]$ (the first seven bit components) does *not* satisfy the Markov condition. Note that the leakage model in this example intentionally discards some information, hence may not be satisfactory [18].

Let \tilde{k} be the key estimate that maximizes a distinguisher \mathcal{D} given $\tilde{\mathbf{x}}$ and $\tilde{\mathbf{t}}$, i.e.,

$$\tilde{k} = \arg \max_{k \in \mathcal{K}} \mathcal{D}(\tilde{\mathbf{x}}, \tilde{\mathbf{y}}) \quad (5)$$

where \mathcal{K} is the key space.

We also assume that leakage values are quantized⁵ in a suitable finite set \mathcal{X} . Letting \mathcal{Y} denote the discrete sensitive value space, we have $\tilde{\mathbf{x}} \in \mathcal{X}^{\tilde{q}}$ and $\tilde{\mathbf{y}} \in \mathcal{Y}^{\tilde{q}}$. The actual probability densities being unknown, the attacker estimates them online, during the attack, from the available data in the sequences $\tilde{\mathbf{x}}$ and $\tilde{\mathbf{y}}$ (via $\tilde{\mathbf{t}}$), by counting all instances of possible values of $x \in \mathcal{X}$ and $y \in \mathcal{Y}$:

$$\tilde{\mathbb{P}}(x) = \frac{1}{\tilde{q}} \sum_{i=1}^{\tilde{q}} \mathbb{1}_{\tilde{x}_i=x}, \quad (6)$$

⁴In order to uniquely distinguish the correct key, some conditions on the expressions of y are required. Specifically, let us denote by y_k the function $t \mapsto y_k(t) = y(k, t)$, and let \mathcal{B} the set of bijections on the leakage space \mathcal{X} . We have:

$$\text{if } \forall k, \exists k' \neq k, \quad \exists \beta \in \mathcal{B} \text{ s.t. } y_{k'} = \beta \circ y_k, \quad \text{then the distinguisher features a tie,} \quad (3)$$

$$\text{if } \forall k, \forall k' \neq k, \quad \exists \beta \in \mathcal{B} \text{ s.t. } y_{k'} = \beta \circ y_k, \quad \text{then the distinguisher is not sound.} \quad (4)$$

Indeed, in (3), there is no way for the distinguisher to tell k^* from k' , and in (4), the distinguisher yields the same value for all the key guesses.

We refer the interested reader to the work done in [24, Sec. 3]. We note that $y_i = k \oplus t_i$ does not lead to a sound distinguisher, as for all k' , $x \mapsto x \oplus k'$ is bijective, and maps y_k to $y_{k \oplus k'}$. On the contrary, there is no bijection β such that for all t , $w_H(k \oplus t) = \beta(w_H(k \oplus k' \oplus t))$. So the choice $y_i = w_H(k \oplus t_i)$ is sound.

⁵Some side-channels are discrete by nature, such as the timing measurements (measured in units of clock period). In addition, oscilloscopes or data acquisition appliances rely on ADCs (Analog to Digital Converters), which usually sample a continuous signal into a sequence of integers, most of the time represented on 8 bits (hence $\mathcal{X} = \mathbb{F}_2^8$).

$$\tilde{\mathbb{P}}(y) = \frac{1}{\tilde{q}} \sum_{i=1}^{\tilde{q}} \mathbb{1}_{\tilde{y}_i=y}, \quad (7)$$

$$\tilde{\mathbb{P}}(x, y) = \frac{1}{\tilde{q}} \sum_{i=1}^{\tilde{q}} \mathbb{1}_{\tilde{x}_i=x, \tilde{y}_i=y}, \quad (8)$$

$$\tilde{\mathbb{P}}(x|y) = \frac{\sum_{i=1}^{\tilde{q}} \mathbb{1}_{\tilde{x}_i=x, \tilde{y}_i=y}}{\sum_{i=1}^{\tilde{q}} \mathbb{1}_{\tilde{y}_i=y}} = \frac{\tilde{\mathbb{P}}(x, y)}{\tilde{\mathbb{P}}(y)}, \quad (9)$$

where $\mathbb{1}_A$ denotes the indicator function of A : $\mathbb{1}_A = 1$ if A is true and $= 0$ otherwise.

Definition 1 (Empirical Mutual Information) The empirical mutual information is defined as

$$\tilde{I}(\tilde{\mathbf{x}}, \tilde{\mathbf{y}}) = \sum_{x \in \mathcal{X}, y \in \mathcal{Y}} \tilde{\mathbb{P}}(x, y) \log_2 \frac{\tilde{\mathbb{P}}(x, y)}{\tilde{\mathbb{P}}(x)\tilde{\mathbb{P}}(y)}, \quad (10)$$

which can also be written as

$$\tilde{I}(\tilde{\mathbf{x}}, \tilde{\mathbf{y}}) = \tilde{H}(\tilde{\mathbf{x}}) - \tilde{H}(\tilde{\mathbf{x}}|\tilde{\mathbf{y}}), \quad (11)$$

where the empirical entropies are defined as

$$\tilde{H}(\tilde{\mathbf{x}}) = \sum_{x \in \mathcal{X}} \tilde{\mathbb{P}}(x) \log_2 \frac{1}{\tilde{\mathbb{P}}(x)} \quad (12)$$

and

$$\tilde{H}(\tilde{\mathbf{x}}|\tilde{\mathbf{y}}) = \sum_{x \in \mathcal{X}, y \in \mathcal{Y}} \tilde{\mathbb{P}}(x, y) \log_2 \frac{1}{\tilde{\mathbb{P}}(x|y)}. \quad (13)$$

These quantities are functions of the sequences $\tilde{\mathbf{x}}$ and $\tilde{\mathbf{y}}$ since $\tilde{\mathbb{P}}(x, y)$ is a function of $\tilde{\mathbf{x}}$ and $\tilde{\mathbf{y}}$. They also depend on the key guessed value k , *via* the expression of $\tilde{\mathbf{y}}$.

2.2 Mathematical derivation

In this subsection, we show that MIA coincides with the ML expression where leakage probabilities \mathbb{P} are replaced by online estimated probabilities $\tilde{\mathbb{P}}$.

Definition 2 (Success Rate [19, Sec. 3.1]) The *success rate* (averaged over all possible secret key values) is defined as

$$\text{SR} = \frac{1}{2^n} \sum_{k=0}^{2^n-1} \mathbb{P}_k(\tilde{k} = k). \quad (14)$$

Here we follow a frequentist approach. An equivalent alternative Bayesian approach would be to assume a uniform prior key distribution [10].

Theorem 3 (Maximum Likelihood [4]) Let $\tilde{\mathbf{y}} = \varphi(f(k, \tilde{\mathbf{t}}))$. The optimal key estimate that maximizes the success rate (14) is

$$\tilde{k} = \arg \max_k \mathbb{P}(\tilde{\mathbf{x}}|\tilde{\mathbf{y}}). \quad (15)$$

Proof We give here a formal proof, which nicely relates to Definition 2. Straightforward computation yields

$$\text{SR} = \frac{1}{2^n} \sum_{k=1}^{2^n} \sum_{\tilde{\mathbf{x}}, \tilde{\mathbf{t}}} \mathbb{P}_k(\tilde{\mathbf{x}}, \tilde{\mathbf{t}}) \mathbb{1}_{k=\tilde{k}} \quad (16)$$

$$= \frac{1}{2^n} \sum_{k=1}^{2^n} \sum_{\tilde{\mathbf{x}}, \tilde{\mathbf{t}}} \mathbb{P}(\tilde{\mathbf{x}}|\tilde{\mathbf{y}} = \varphi(f(k, \tilde{\mathbf{t}}))) \mathbb{P}(\tilde{\mathbf{t}}) \mathbb{1}_{k=\tilde{k}} \quad (\text{by (2) \& Assumption 1}) \quad (17)$$

$$= \frac{1}{2^{n(\tilde{q}+1)}} \sum_{k=1}^{2^n} \sum_{\tilde{\mathbf{x}}, \tilde{\mathbf{t}}} \mathbb{P}(\tilde{\mathbf{x}}|\tilde{\mathbf{y}} = \varphi(f(k, \tilde{\mathbf{t}}))) \mathbb{1}_{k=\tilde{k}} \quad (18)$$

$$= \frac{1}{2^{n(\tilde{q}+1)}} \sum_{\tilde{\mathbf{x}}, \tilde{\mathbf{t}}} \mathbb{P}(\tilde{\mathbf{x}}|\tilde{\mathbf{y}} = \varphi(f(k = \tilde{k}, \tilde{\mathbf{t}}))). \quad (19)$$

Thus, for each given sequences $\tilde{\mathbf{x}}, \tilde{\mathbf{t}}$ maximizing the success rate amounts to choosing $k = \tilde{k}$ so as to maximize $\mathbb{P}(\tilde{\mathbf{x}}|\tilde{\mathbf{y}}) = \mathbb{P}(\tilde{\mathbf{x}}|\tilde{\mathbf{y}} = \varphi(f(k = \tilde{k}, \tilde{\mathbf{t}})))$:

$$\tilde{k} = \arg \max_k \mathbb{P}(\tilde{\mathbf{x}}|\tilde{\mathbf{y}}). \quad (20) \quad \square$$

When no profiling is possible the conditional distribution

$$\mathbb{P}(\tilde{\mathbf{x}}|\tilde{\mathbf{y}}) = \prod_{i=1}^{\tilde{q}} \mathbb{P}(\tilde{x}_i|\tilde{y}_i) \quad (21)$$

is unknown to the attacker. Therefore, Theorem 3 is no longer practical and we require a *universal*⁶ version of it.

Definition 3 (Universal Maximum Likelihood) Let $\tilde{\mathbf{y}} = \varphi(f(k, \tilde{\mathbf{t}}))$. The *universal* maximum likelihood (UML) key estimate is defined by

$$\tilde{k} = \arg \max_k \tilde{\mathbb{P}}(\tilde{\mathbf{x}}|\tilde{\mathbf{y}}), \quad (22)$$

where

$$\tilde{\mathbb{P}}(\tilde{\mathbf{x}}|\tilde{\mathbf{y}}) = \prod_{i=1}^{\tilde{q}} \tilde{\mathbb{P}}(\tilde{x}_i|\tilde{y}_i). \quad (23)$$

Here $\tilde{\mathbb{P}}$, defined in (9), (8), (7) and (6), is estimated directly from the available data, that is, from the actual values in the sequences $\tilde{\mathbf{x}}$ and $\tilde{\mathbf{y}}$.

Theorem 4 (UML is MIA) *The universal maximum likelihood key estimate is equivalent to the mutual information analysis [8]:*

$$\tilde{k} = \arg \max_k \tilde{\mathbb{P}}(\tilde{\mathbf{x}}|\tilde{\mathbf{y}}) = \arg \max_k \tilde{I}(\tilde{\mathbf{x}}, \tilde{\mathbf{y}}), \quad (24)$$

where $\tilde{I}(\tilde{\mathbf{x}}, \tilde{\mathbf{y}})$ is the universal mutual information (Definition 1).

⁶*Universal*, in the information theoretic sense of the word, means: computed from the available data without prior information.

Proof Rearrange the likelihood product according to values taken by the \tilde{x}_i and \tilde{y}_i 's:

$$\tilde{\mathbb{P}}(\tilde{\mathbf{x}}|\tilde{\mathbf{y}}) = \prod_{i=1}^{\tilde{q}} \tilde{\mathbb{P}}(\tilde{x}_i|\tilde{y}_i) = \prod_{x \in \mathcal{X}, y \in \mathcal{Y}} \tilde{\mathbb{P}}(x|y)^{\tilde{n}_{x,y}} \quad (25)$$

where $\tilde{n}_{x,y}$ is the number of components $(\tilde{x}_i, \tilde{y}_i)$ equal to (x, y) , i.e.,

$$\tilde{n}_{x,y} = \sum_{i=1}^{\tilde{q}} \mathbb{1}_{\tilde{x}_i=x, \tilde{y}_i=y} = \tilde{q} \tilde{\mathbb{P}}(x, y). \quad (26)$$

The second equality in (25) is based on a counting argument: some events collide, i.e., we have $(x_i, y_i) = (x_{i'}, y_{i'})$ for $i \neq i'$. The exponent $\tilde{n}_{x,y}$ is meant to enumerate all such possible collisions. This gives

$$\tilde{\mathbb{P}}(\tilde{\mathbf{x}}|\tilde{\mathbf{y}}) = \prod_{x \in \mathcal{X}, y \in \mathcal{Y}} \tilde{\mathbb{P}}(x|y)^{\tilde{q} \tilde{\mathbb{P}}(x,y)} = 2^{-\tilde{q} \tilde{H}(\tilde{\mathbf{x}}|\tilde{\mathbf{y}})}, \quad (27)$$

(see Definition 1). Therefore, maximizing $\tilde{\mathbb{P}}(\tilde{\mathbf{x}}|\tilde{\mathbf{y}})$ amounts to minimizing the empirical conditional entropy $\tilde{H}(\tilde{\mathbf{x}}|\tilde{\mathbf{y}})$. Since $\tilde{H}(\tilde{\mathbf{x}})$ is key-independent, this in turn amounts to maximizing the empirical mutual information $\tilde{I}(\tilde{\mathbf{x}}, \tilde{\mathbf{y}}) = \tilde{H}(\tilde{\mathbf{x}}) - \tilde{H}(\tilde{\mathbf{x}}|\tilde{\mathbf{y}})$. \square

From Theorem 4 we can conclude that MIA is “optimal” as a universal maximum likelihood estimation. This constitutes a rigorous proof that mutual information is a relevant tool for key recovery when the leakage is unknown (in the case where the model satisfies the Markov condition) as was already hinted in [8, 16, 18, 21].

Corollary 5 *MIA coincides with the ML distinguisher as $\tilde{q} \rightarrow \infty$.*

Proof By the law of large numbers, the online probability $\tilde{\mathbb{P}}$ converges almost surely to the exact probability of the leakage as $\tilde{q} \rightarrow \infty$. For any fixed values of $\tilde{x} \in \mathcal{X}$, $\tilde{y} \in \mathcal{Y}$,

$$\tilde{\mathbb{P}}(\tilde{x}|\tilde{y}) \xrightarrow[\tilde{q} \rightarrow \infty]{} \mathbb{P}(\tilde{x}|\tilde{y}) \quad a.s.$$

Thus in the limit, MIA coincides with the ML rule. \square

Remark 1 It is well known [16] that if the mapping $\tilde{t} \mapsto \tilde{y} = \varphi(f(k, \tilde{t}))$ is one-to-one (for all values of k), then MIA cannot distinguish the correct key. This is also clear from (4) in footnote 4: given two different keys k, k' , there is a bijection between y_k and $y_{k'}$, which is simply $\beta = y_{k'} \circ y_k^{-1}$. In our present setting this is easily seen by noting that when $\tilde{y} = \varphi(f(k, \tilde{t}))$,

$$\tilde{\mathbb{P}}(x|y) = \frac{\sum_{i=1}^{\tilde{q}} \mathbb{1}_{\tilde{x}_i=x, \tilde{y}_i=y}}{\sum_{i=1}^{\tilde{q}} \mathbb{1}_{\tilde{y}_i=y}} = \frac{\sum_{i=1}^{\tilde{q}} \mathbb{1}_{\tilde{x}_i=x, \tilde{t}_i=t}}{\sum_{i=1}^{\tilde{q}} \mathbb{1}_{\tilde{t}_i=t}} \quad (28)$$

is independent of the value k . Note that this is true for any fixed number of measurements \tilde{q} during the attack.

2.3 MIA faster than ML distinguisher

Now that we have shown that the *Universal* ML distinguisher is strictly equivalent to the MIA distinguisher, we show that the use of the MIA Distinguisher is cheaper in terms of

calculations than the ML distinguisher. Both distinguishers require the knowledge of $\tilde{\mathbb{P}}$, the online estimation of the leakage probability. However, the summation is not exactly the same:

- the ML distinguisher consists in a sum of \tilde{q} logarithms, whereas
- the MIA involves a sum over $|\mathcal{X}| \times |\mathcal{Y}|$ logarithms.⁷

This means that computing a ML requires \tilde{q} logarithm computations while computing a MIA requires $|\mathcal{X}| \times |\mathcal{Y}|$ logarithm computations. As long as $|\mathcal{X}| \times |\mathcal{Y}|$ is smaller than \tilde{q} , which is verified for practical signal-to-noise values, the MIA is faster than the ML in terms of logarithm computations. Furthermore, in Section 5.2, we present a fast algorithm to compute MIA; it takes advantage of precomputations, which are similar to that already presented in [11].

3 Non-gaussian noise challenge

In this section, we show two examples where MIA outperforms CPA due to non-Gaussian noise. The first example presented in Section 3.1 is an academic (albeit artificial) example built in order to have the success rate of CPA collapse. The second example in Section 3.2 is more practical.

3.1 Pedagogical case-study

We consider a setup where the variables are $X = Y + N$, with $Y = \varphi(f(k^*, T))$, where $Y \in \{\pm 1\}$, and $N \sim \mathcal{U}(\{\pm\sigma\})$ (meaning that N takes values $-\sigma$ and $+\sigma$ randomly, with probabilities $\frac{1}{2}$ and $\frac{1}{2}$), where σ is an integer. Specifically, we assume that $k^*, t \in \mathbb{F}_2^n$, with $n = 4$, and that $f : \mathbb{F}_2^n \times \mathbb{F}_2^n \rightarrow \mathbb{F}_2^m$ is a (truncated version) of the SERPENT Sbox⁸ fed by the XOR of the two inputs (key and plaintext nibbles) and $\varphi = w_H$ is the Hamming weight (which reduces to the identity $\mathbb{F}_2 \rightarrow \mathbb{F}_2$ if $m = 1$ bit).

The optimal distinguisher (Theorem 3) in this scenario has the following closed-form expression:

$$\mathcal{D}(\tilde{\mathbf{x}}, \tilde{\mathbf{t}}) = \arg \max_k \mathbb{P}(\tilde{\mathbf{x}}|\tilde{\mathbf{t}}, k) = \arg \max_k \frac{1}{2^{\tilde{q}}} \prod_{i=1}^{\tilde{q}} \delta(\tilde{x}_i, \tilde{t}_i, k), \quad (29)$$

where $\delta : \mathbb{F}_2^m \times \mathbb{F}_2^n \times \mathbb{F}_2^n \rightarrow \{0, 1\}$ is defined as

$$\delta(x, t, k) = \begin{cases} 1 & \text{if } x - \varphi(f(k, t)) = -\sigma, \\ 1 & \text{if } x - \varphi(f(k, t)) = +\sigma, \\ 0 & \text{otherwise.} \end{cases}$$

⁷In practice, logarithms require a high computational power, hence the number of calls to this function shall be minimized.

⁸The least significant bit S_0 of the PRESENT Sbox S is not suitable because one has $\forall z \in \mathbb{F}_2^4$, $S_0(z) = S_0(z \oplus 0x9) = \neg S_0(z \oplus 0x1) = \neg S_0(z \oplus 0x8)$. As in (3) of footnote 4, *ties* occur: it is not possible to distinguish k^* , $k^* \oplus 0x9$, $k^* \oplus 0x1$, $k^* \oplus 0x8$ (the corresponding bijections are respectively $x \mapsto x$ and $x \mapsto 1 - x$). Therefore, we consider component 1 instead of 0, which does not satisfy such relationships.

The evaluation of this quantity requires the knowledge of σ , which by definition is an unknown quantity related to the noise. Our simulations have been carried out as follows.

1. Generate two large uniformly distributed random vectors $\tilde{\mathbf{t}}$ and $\tilde{\mathbf{n}}$ of length \tilde{q} ;
2. Deliver the pair of vectors $(\tilde{\mathbf{t}}, \tilde{\mathbf{x}} = \varphi(f(k^*, \tilde{\mathbf{t}})) + \tilde{\mathbf{n}})$ to the attacker;
3. Estimate averages and PMFs (probability mass functions) of this data for $\tilde{q}_{\text{step}} (= 1)$, then for $2\tilde{q}_{\text{step}}, 3\tilde{q}_{\text{step}}$ and so on;
4. At each multiple of \tilde{q}_{step} , carry out CPA and MIA.

The attacks are reproduced 100 times to allow for narrow error bars on the estimated success rate.

Remark 2 We do not consider *linear regression analysis* here because the model is not parametric. The only unknown parameter is related to the noisy part of the leakage, not its deterministic part.

Simulation results are given in Fig. 2 for $\sigma = 2$ and $\sigma = 4$. The success rate of the “optimal” distinguisher (the ML distinguisher of Theorem 3 – see (29)) is drawn in order to visualize the limit between feasible (below) and unfeasible (above) attacks. It can be seen that MIA is almost as successful as the ML distinguisher, despite the knowledge of the value of σ is not required for the MIA. In addition, one can see that the CPA performs worse, and all the worst as σ increases. In this case, the CPA is not the optimal distinguisher (as e.g., underlined in [10, Theorem 5]) since the noise is not Gaussian (but discrete).

Remark 3 Another attack strategy for the leakage model presented in this subsection would simply be to filter out the noise. One could for instance dispose of all traces where the leakage is negative. The remaining traces (half of them) contain a constant noise $N = +\sigma > 1$, hence the signal Y can be read out without noise. Such attack, known as the *subset attack* [14, Sec. 5.2], is not far from the optimal one (29). It actually does coincide with the optimal attack if the attacker recovers Y from both subsets $\{i/X_i > 0\}$ and $\{i/X_i < 0\}$. Still, it can be noted that MIA is very close to being optimal for this scenario.

Asymptotics We can estimate the theoretical quantities for CPA and MIA as follows. We have $\text{Var}(Y) = 1$ and $\text{Var}(N) = \sigma^2$, hence a signal to noise ratio $\text{SNR} = 1/\sigma^2$. In addition, X can only take four values: $\pm 1 \pm \sigma$. Since $\mathbb{E}(XY) = \mathbb{E}(X^2) + \mathbb{E}(YN) = \text{Var}(X) + \mathbb{E}(Y)\mathbb{E}(N) = 1 + 0 \times 0 = 1$, the correlation is simply $\rho(X, Y) = 1/\sigma$, which vanishes as σ increases.

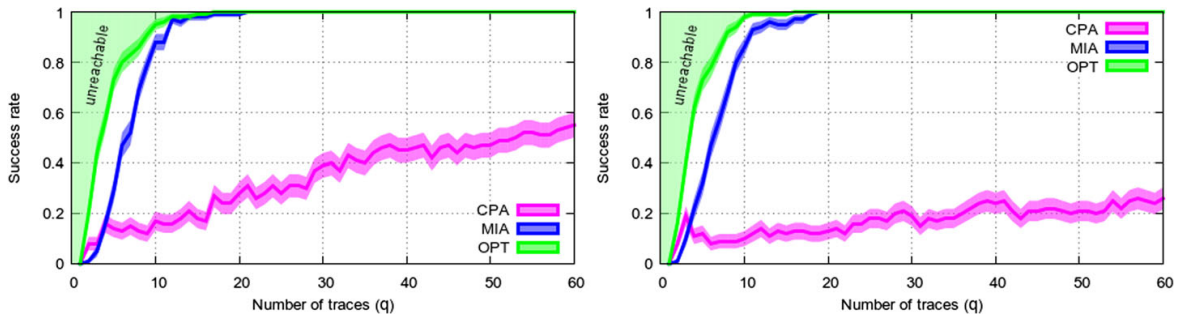


Fig. 2 Success rate for $\sigma = 2$ (left) and $\sigma = 4$ (right), when $Y \sim \mathcal{U}(\{\pm 1\})$ and $N \sim \mathcal{U}(\{\pm \sigma\})$

However, for $\sigma > 1$, the mutual information $I(X, Y) = 1$ bit. Indeed, $H(X) = -\sum_{x \in \{\pm 1 \pm \sigma\}} \mathbb{P}(X = x) \log_2 \mathbb{P}(X = x) = -\sum_{x \in \{\pm 1 \pm \sigma\}} \frac{1}{4} \log_2 \frac{1}{4} = \log_2 4 = 2$ bits, $H(X|y = \pm 1) = \log_2 2 = 1$ bit, so $I(X, Y) = \log_2 4 - \sum_{y \in \{\pm 1\}} \mathbb{P}(X = x) \log_2 2 = \log_2 4 - \log_2 2 = 1$ bit, irrespective of $\sigma \in \mathbb{N}$.

The important fact is that the mutual information does not depend on the value of σ . Accordingly, it can be seen from Fig. 2 that the success rate of the MIA is not affected by the noise variance. This explains why MIA will outperform the CPA for large enough σ .

3.2 Application to bitslice PRESENT

Bitslicing algorithms is a common practice. This holds both for standard [17] (e.g., AES) and lightweight [12] (PRESENT, Piccolo) block ciphers. Here the distinguishers must be single-bit: $Y \in \{\pm 1\}$. However, compared to the case of Section 3.1, the noise takes now more than two values: On an 8-bit computer, the 7 other bits will leak independently. They are, however, not concerned by the attack, and constitute *algorithmic noise* N which follows a binomial law $\alpha \times \mathcal{B}(7, \frac{1}{2})$, where α is a scaling factor.

Simulation results for various values of α are in Fig. 3. Interestingly, MIA is efficient for the cases where the leakage $Y \sim \mathcal{U}(\{\pm 1\})$ is not altered by the addition of noise: For $\alpha = 0.8$ and $\alpha = 2.0$, it is still possible to tell unambiguously from X what is the value of Y . On the contrary, when $\alpha = 0.5$ or $\alpha = 1.0$, the function $(Y, N) \mapsto X = Y + N$ is not one-to-one. For instance, in the case $\alpha = 1.0$, the value $X = 2$ can result as well from $Y = -1$ and $N = 3$, or $Y = +1$ and $N = 2$ (see Fig. 4).

4 Partially unknown model challenge

Veyrat-Charvillon and Standaert [20, section 4] have already noticed that MIA can outperform CPA if the model is drifted too far away from the real leakage. However, LRA is able

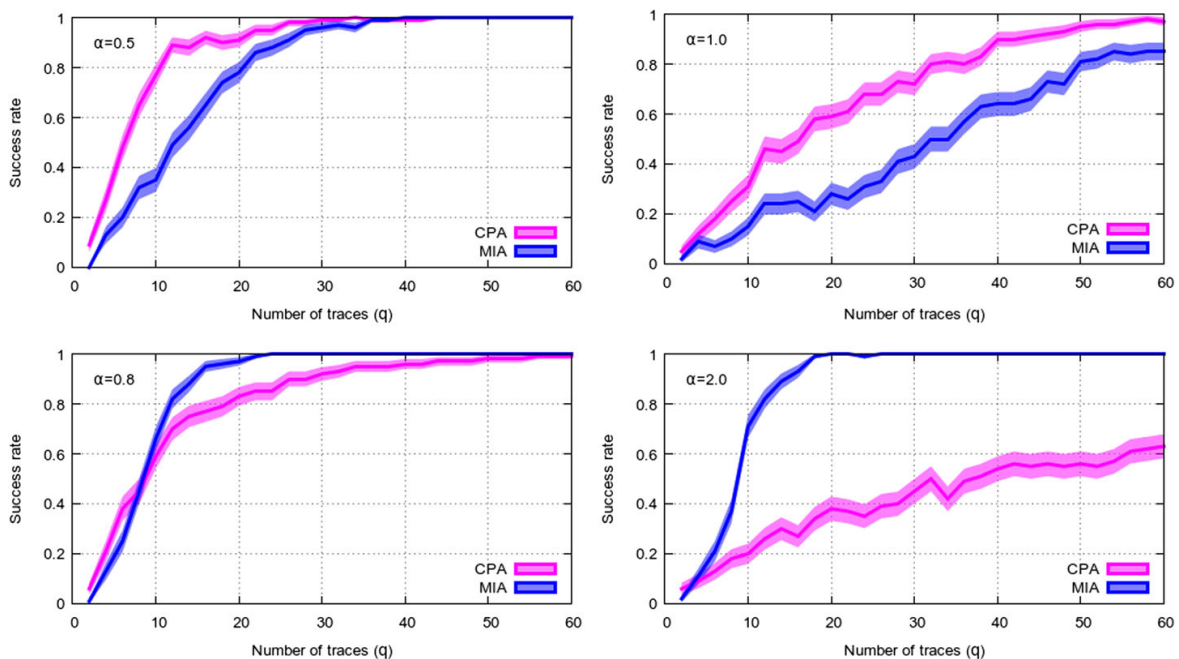


Fig. 3 Success rate for the attack of a bitsliced algorithm on an 8-bit processor, where 7 bits make up algorithmic noise, and have weight 0.5, 1.0 (*top*) and 0.8 and 2.0 (*bottom*)

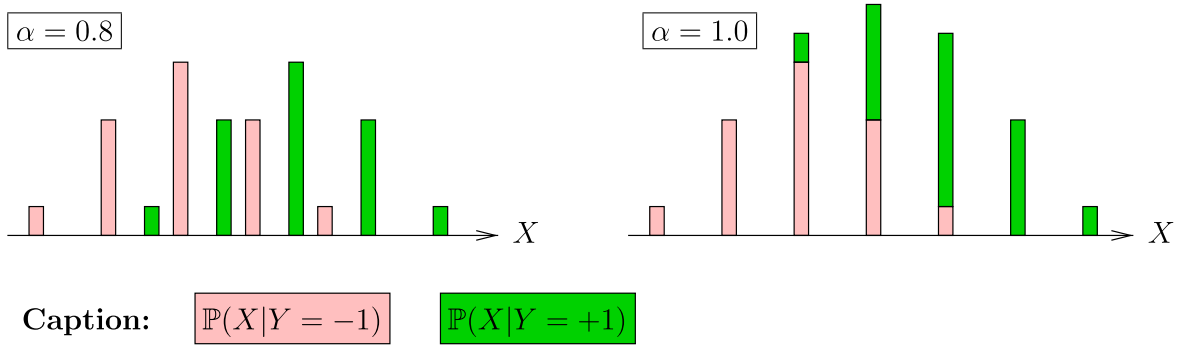


Fig. 4 Illustration of bijectivity (*left*) vs. non-injectivity (*right*) of the leakage function

to make up for the model drift of [20] (which considered unevenly weighted bits). In this section, we challenge CPA and LRA with a partially unknown model. We show that, in our example, MIA has a much better success rate than both CPA and LRA.

For our empirical study we used the following setup:

$$X = \psi(Y(k^*)) + N, \quad Y(k^*) = w_H(\text{Sbox}(k^* \oplus T)),$$

where Sbox is the AES substitution box, ψ is the non-linear function given by:

x	0	1	2	3	4	5	6	7	8
$\psi(x)$	+1	+2	+3	+4	0	-4	-3	-2	-1

which is unknown to the attacker, and N is a centered Gaussian noise with unknown standard deviation σ . The non-linearity of ψ is motivated by [13], where it is discussed that a linear model favors CPA over MIA.

The leakage is continuous due to the Gaussian noise. In order to discretize the leakage to obtain discrete probabilities, we used the *binning* method. We conducted MIA with several different binning sizes:

$$B = \{(i-1) \times \Delta x, i \times \Delta x[, i \in \mathbb{Z}\} \quad \text{for } \Delta x = \{1, 3, 5, 7, 9\}. \quad (30)$$

In this paper, we do not try to establish any specific result about binning, but content ourselves to present empirical results obtained with different bin sizes.

We have carried out LRA for the standard basis in dimension $d=9$ and higher dimensions $d = \{37, 93, 163\}$. More precisely, for $d=9$ we have $\tilde{\mathbf{y}}'(k) = (\vec{1}, \tilde{\mathbf{y}}_1(k), \tilde{\mathbf{y}}_2(k), \dots, \tilde{\mathbf{y}}_8(k))$ with $\tilde{\mathbf{y}}_j(k) = [\text{Sbox}(k \oplus T)]_j$ where $[\cdot]_j : \mathbb{F}_2^n \rightarrow \mathbb{F}_2$ is the projection mapping onto the j -th bit and where $\vec{1}$ an all-one string. For $d=37$ the attacker additionally takes into consideration the products between all possible $\tilde{\mathbf{y}}_j$ ($1 \leq j \leq 8$), i.e., $\tilde{\mathbf{y}}_1 \cdot \tilde{\mathbf{y}}_2, \tilde{\mathbf{y}}_1 \cdot \tilde{\mathbf{y}}_3, \tilde{\mathbf{y}}_1 \cdot \tilde{\mathbf{y}}_4$ and so on. Consequently, $d=93$ considers additionally the product between three $\tilde{\mathbf{y}}$'s and $d=163$ includes also all possible product combinations with four columns. See [9] for a detailed description on the selection of basis functions.

Figure 5 shows the success rate using 100 independent experiments. Perhaps surprisingly, MIA turns out to be more efficient than LRA. Quite naturally, MIA and LRA become closer as the the variance of the independent measurement noise N increases. It can be seen that LRA using higher dimension requires a sufficient number of traces for estimation (for $d=37$ around 100, $d=93$ around 150, and $d=137$ failed below 200 traces). Consequently,

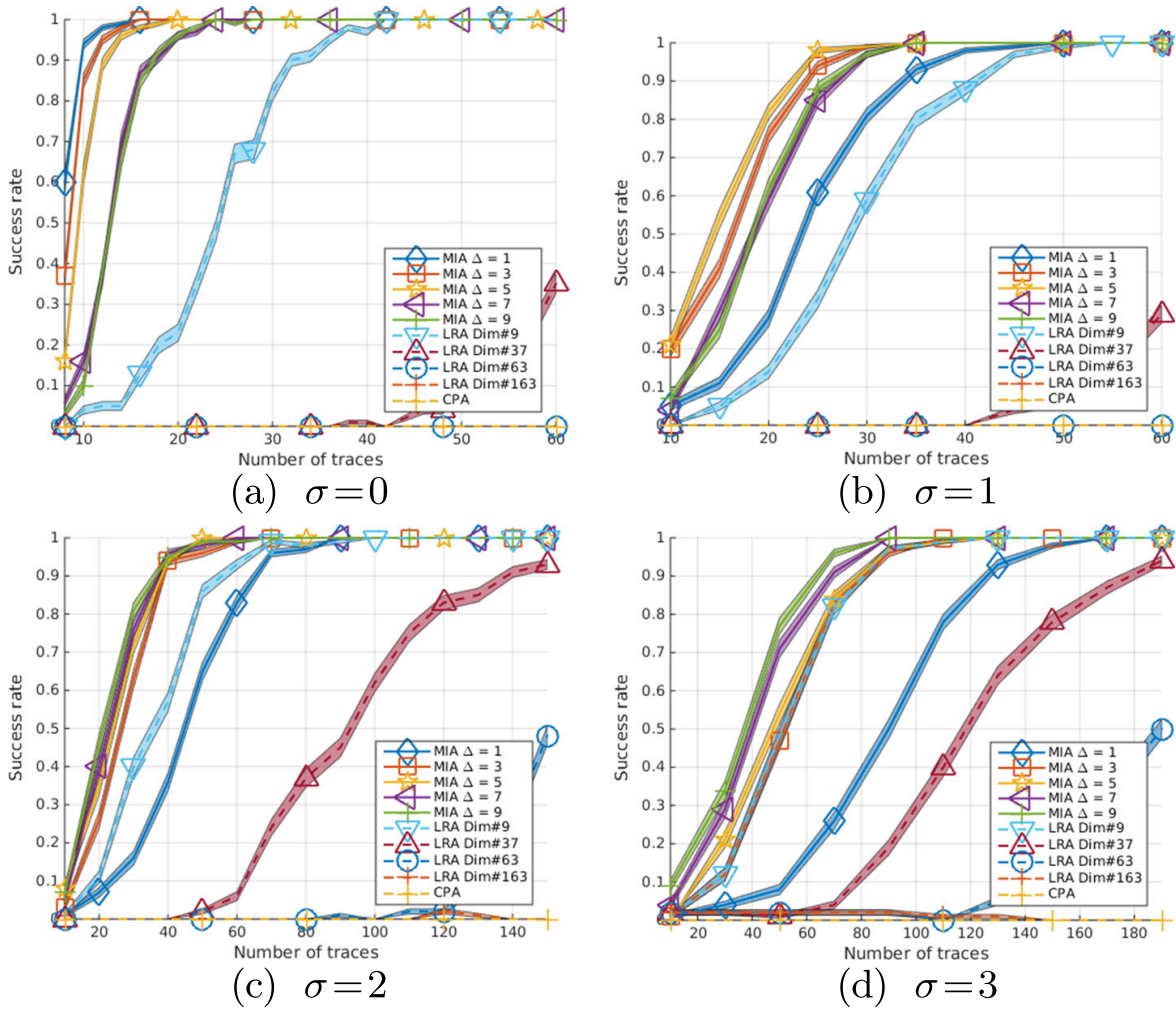


Fig. 5 Success rate for $\sigma \in \{0, 1, 2, 3\}$ when the model is unknown

in this scenario using high dimensions is not appropriate, even if the high dimension in question might fit the unknown function ψ .

One reason why MIA outperforms CPA and LRA in this scenario is that the function ψ was chosen to have a null covariance. Moreover, one can observe that the most efficient binning size depends on the noise variance and thus on the scattering of the leakage. As σ increases, larger values of Δ should be chosen. This is contrary to the suggestions made in [8], which proposes to estimate the probability distributions as accurately as possible and thus to consider as many bins as there are distinct values in the traces. In our experiments, when noise is absent ($\sigma = 0$) the optimal binning size is $\Delta = 1$ which is equivalent to the step size of Y , while for $\sigma = 2$ the optimal binning is $\Delta = 5$ (see Fig. 5c).

It can be seen that using 40 traces the success rate of MIA with $\Delta = 5$ reaches 90%, whereas using $\Delta = 1$ it is only about 30%. To understand this phenomenon, Fig. 6 displays the estimated $\tilde{\mathbb{P}}(x|y)$ in a 3D histogram for the correct key and one false key hypothesis, such that MIA is able to reveal the correct key using $\Delta = 5$ but fails for $\Delta = 1$. Clearly, the distinguishability between the correct and false key is much higher in case of $\Delta = 5$ than for $\Delta = 1$.

More precisely, as the leakage is dispersed by the noise the population of bins of the false key becomes similar to the the ones of the correct key when considering smaller binning size (compare Fig. 6a and b). In contrast, the difference is more visible when the leakage is quantified into larger bins (compare Fig. 6c and d). Therefore, even if the estimation of $\tilde{I}(\tilde{\mathbf{x}}, \tilde{\mathbf{y}})$

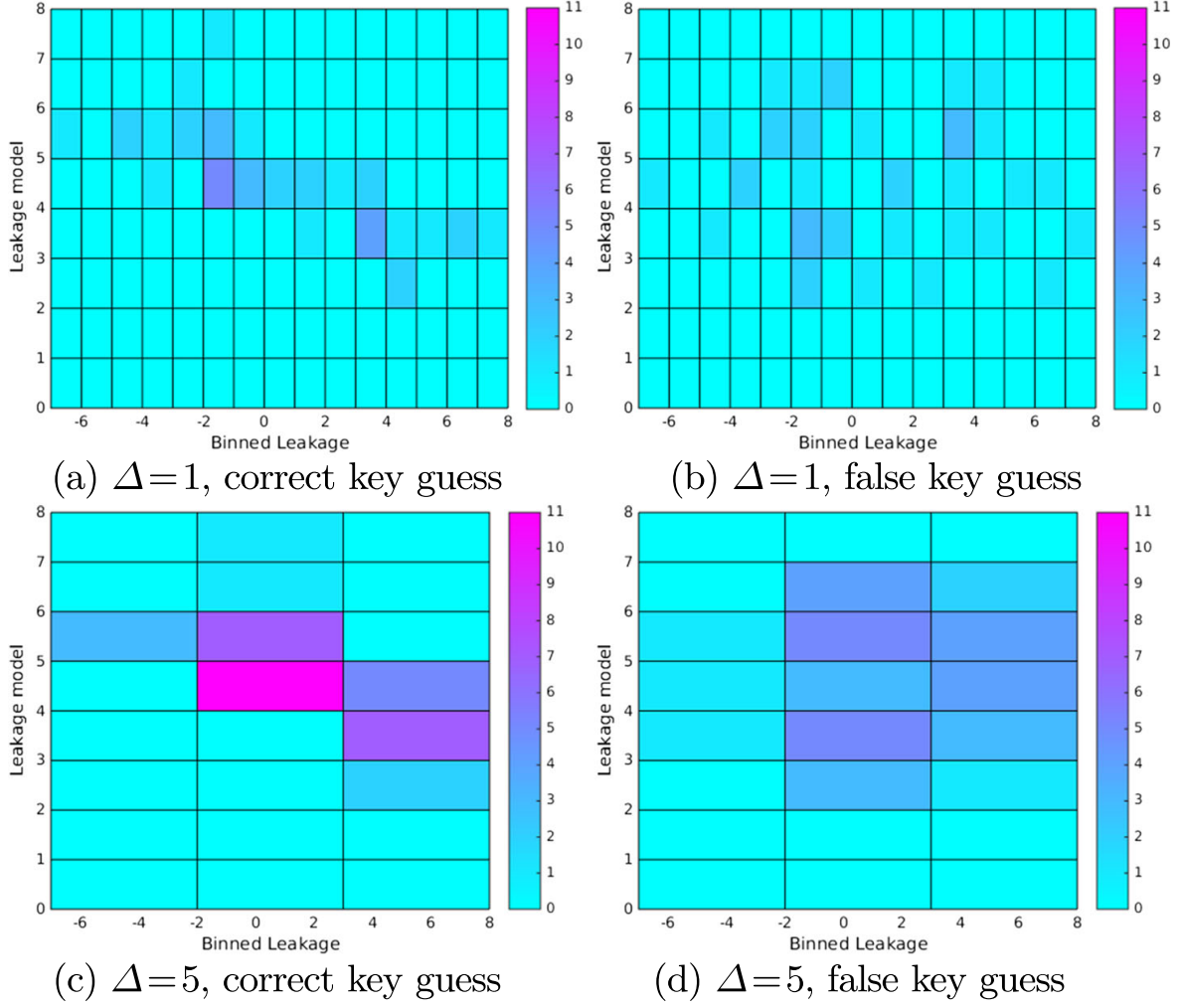


Fig. 6 Estimated $\tilde{\mathbb{P}}(X|Y)$ using 40 traces for $\sigma = 2$ (see Fig. 5c)

using $\tilde{\mathbb{P}}(x|y)$ for larger Δ is coarser and thus loses some information, the distinguishing ability to reveal the correct key is enhanced.

5 Fast computations

In this section, we explain how we compute CPA and MIA in a faster way. We first show an algorithm for CPA, then for MIA.

5.1 Fast computation of CPA

We recall here the definition of empirical CPA:

$$\begin{aligned}
 \rho(X, Y(k)) &= \frac{\frac{1}{m} \sum_{i=1}^m x_i y_i(k) - \left(\frac{1}{m} \sum_{i=1}^m x_i\right) \left(\frac{1}{m} \sum_{i=1}^m y_i(k)\right)}{\sqrt{\frac{1}{m} \sum_{i=1}^m x_i^2 - \left(\frac{1}{m} \sum_{i=1}^m x_i\right)^2} \sqrt{\frac{1}{m} \sum_{i=1}^m y_i^2(k) - \left(\frac{1}{m} \sum_{i=1}^m y_i(k)\right)^2}} \\
 &= \frac{m \sum_{i=1}^m x_i y_i(k) - \left(\sum_{i=1}^m x_i\right) \left(\sum_{i=1}^m y_i(k)\right)}{\sqrt{m \sum_{i=1}^m x_i^2 - \left(\sum_{i=1}^m x_i\right)^2} \sqrt{m \sum_{i=1}^m y_i^2(k) - \left(\sum_{i=1}^m y_i(k)\right)^2}}, \quad (31)
 \end{aligned}$$

where $y_i(k) = \varphi(f(k, t_i))$. For the fast computation the following accumulators are required:

- $\mathbf{sx}[t] = \sum_{i/t_i=t} x_i$, the sum of leakages for a common t ;
- $\mathbf{sx2}[t] = \sum_{i/t_i=t} x_i^2$, the sum of leakage squares for a common t ;
- $\mathbf{qt}[t] = \sum_{i/t_i=t} 1$, the number of t which occurred.

We detail the various terms in the next two paragraphs.

5.1.1 Averages

First, we simply have

$$\sum_{i=1}^m x_i = \sum_t \mathbf{sx}[t],$$

which is key independent. Second,

$$\begin{aligned} \sum_{i=1}^m y_i &= \sum_t \sum_{i/t_i=t} y_i \\ &= \sum_t \sum_{i/t_i=t} \varphi(f(k, t_i)) \\ &= \sum_t \varphi(f(k, t_i)) \mathbf{qt}[t], \end{aligned}$$

which, quite surprisingly, is key independent.

5.1.2 Scalar product

The scalar product can be written the following way:

$$\begin{aligned} \sum_{i=1}^m x_i y_i &= \sum_y \sum_{i/y_i=y} x_i y_i \\ &= \sum_y y \sum_{i/y_i=y} x_i \\ &= \sum_y y \sum_{i/\varphi(f(k, t_i))=y} x_i \\ &= \sum_y y \mathbf{sx}'[y], \end{aligned}$$

where $\mathbf{sx}'[y] = \sum_{t/\varphi(f(k, t))=y} \mathbf{sx}[t]$. This optimization is certainly useful for long traces, because it minimizes the number of multiplications (precisely, only 2^m multiplications are done). However, we need 2^m temporary accumulators to save the $\mathbf{sx}'[y]$.

For monosample traces, we can also use this simpler computation:

$$\begin{aligned}
\sum_{i=1}^m x_i y_i &= \sum_t \sum_{i/t_i=t} x_i \varphi(f(k, t_i)) \\
&= \sum_t \sum_{i/t_i=t} \varphi(f(k, t_i)) x_i \\
&= \sum_t \varphi(f(k, t_i)) \sum_{i/t_i=t} x_i \\
&= \sum_t \varphi(f(k, t_i)) \mathbf{s}x[t].
\end{aligned}$$

5.2 Fast computation of MIA

We setup a structure for the PMF, namely an array of hash tables, denoted as $\text{PMF}[t][x]$, where t and x lie in the sets \mathbb{F}_2^n and $\text{Im}(\varphi \circ f) + \text{supp}(N)$, respectively. Suppose we have accumulated \tilde{q} leakage pairs (t, x) .

At this stage, the joint probability is given by

$$\tilde{\mathbb{P}}(t, x) = \frac{1}{\tilde{q}} \text{PMF}[t][x].$$

Now, when using MIA as a distinguisher, we need to compute $\text{PMF}[y][x]$, where $y \in \mathbb{F}_2^n$ (expecting the $(t, k) \mapsto y = \varphi(f(k, t))$ function to be *non-injective* [24], which is the case in the previous sections). The value $\text{PMF}[y][x]$ implicitly depends upon a key guess k : $\text{PMF}[y][x] = \text{PMF}[y = \varphi(f(k, t))][x]$. Now, instead of computing $\tilde{\mathbb{P}}(x, y)$ through $\text{PMF}[y][x]$ explicitly for each key guess, we can reformulate

$$\tilde{\mathbb{P}}(y, x) = \sum_t \tilde{\mathbb{P}}(t, y, x) = \sum_{t/\varphi(f(k,t))=y} \tilde{\mathbb{P}}(t, x) = \frac{1}{\tilde{q}} \sum_{t/\varphi(f(k,t))=y} \text{PMF}[t][x].$$

Thus, we can reuse the tabulated $\text{PMF}[t][x]$ for each key guess, which requires thus much less computations than a straightforward implementation.

Recall the expression of the estimated mutual information:

$$\tilde{I}(\tilde{\mathbf{x}}, \tilde{\mathbf{y}}) = \sum_{x,y} \tilde{\mathbb{P}}(x, y) \log_2 \frac{\tilde{\mathbb{P}}(x, y)}{\tilde{\mathbb{P}}(x) \tilde{\mathbb{P}}(y)}.$$

The value for $\tilde{\mathbb{P}}(x)$ is identical for all key hypotheses and thus can be factored out. In fact, this quantity is a *scaling constant* which could be omitted. But for the sake of completeness, we have

$$\tilde{\mathbb{P}}(x) = \sum_t \tilde{\mathbb{P}}(t, x) = \frac{1}{\tilde{q}} \sum_t \text{PMF}[t][x].$$

Lastly, we need to evaluate $\tilde{\mathbb{P}}(y)$. This is simply done as follows:

$$\tilde{\mathbb{P}}(y) = \sum_x \tilde{\mathbb{P}}(x, y).$$

Algorithm 1 Fast computation algorithm for MIA

```

input :  $\tilde{\mathbf{x}}$  a set of  $\tilde{q}$  traces which take discrete values,
          $\tilde{\mathbf{t}}$  a corresponding set of  $\tilde{q}$  plaintexts/ciphertexts
output:  $(\tilde{I}(\tilde{\mathbf{x}}, \tilde{\mathbf{y}}(k)))_{k \in \mathcal{K}}$ 

// From  $\tilde{\mathbf{x}}$  and  $\tilde{\mathbf{t}}$ , build a hash table  $\text{PMF}[t][x]$  (i.e., a
// histogram)
1 for  $i \in \{1, \dots, \tilde{q}\}$  do
2   |  $\text{PMF}[\tilde{t}_i][\tilde{x}_i] += 1$ 
3 end

4 for  $x \in \mathcal{X}$  do
5   |  $\tilde{\mathbb{P}}(x) = 0$  //  $\tilde{\mathbb{P}}(x)$  holds  $m\tilde{\mathbb{P}}(x)$ , cf. (6)
6   | for  $t \in \mathbb{F}_2^n$  do
7     |  $\tilde{\mathbb{P}}(x) += \text{PMF}[t][x]$ 
8   | end
9 end

10 for  $k \in \mathcal{K}$  do // Key enumeration
11   |  $\forall x \in \mathcal{X}, y \in \mathcal{Y}, \tilde{\mathbb{P}}(x, y) = 0$  //  $\tilde{\mathbb{P}}(x, y)$  holds  $m\tilde{\mathbb{P}}(x, y)$ , cf. (8)
12   | for  $t \in \mathbb{F}_2^n$  do
13     | for  $x \in \mathcal{X}$  do
14       |  $\tilde{\mathbb{P}}(x, \varphi(f(k, t))) += \text{PMF}[t][x]$  //  $y = \varphi(f(k, t))$ , cf. (1)
15     | end
16   | end
17   |  $\tilde{I}(\tilde{\mathbf{x}}, \tilde{\mathbf{y}}(k)) = 0$ 
18   | for  $y \in \mathcal{Y}$  do
19     |  $\tilde{\mathbb{P}}(y) = 0$  //  $\tilde{\mathbb{P}}(y)$  holds  $m\tilde{\mathbb{P}}(y)$ , cf. (7)
20     | for  $x \in \mathcal{X}$  do
21       |  $\tilde{\mathbb{P}}(y) += \tilde{\mathbb{P}}(x, y)$ 
22     | end
23     | for  $x \in \mathcal{X}$  do
24       | // Nota bene:  $(\tilde{\mathbb{P}}(x) = 0 \vee \tilde{\mathbb{P}}(y) = 0) \implies \tilde{\mathbb{P}}(x, y) = 0$ 
25       | if  $\tilde{\mathbb{P}}(x) \neq 0$  and  $\tilde{\mathbb{P}}(y) \neq 0$  then
26         |  $\tilde{I}(\tilde{\mathbf{x}}, \tilde{\mathbf{y}}(k)) += \frac{\tilde{\mathbb{P}}(x, y)}{m} \log_2 \left( \frac{m\tilde{\mathbb{P}}(x, y)}{\tilde{\mathbb{P}}(x)\tilde{\mathbb{P}}(y)} \right)$ 
27       | end
28     | end
29   | end

30 return  $(\tilde{I}(\tilde{\mathbf{x}}, \tilde{\mathbf{y}}(k)))_{k \in \mathcal{K}}$  // As in (10)

```

Algorithm 2 Computation of the MIA success rate

input :

- $\tilde{\mathbf{x}}$ a set of \tilde{q} traces which take discrete values,
- $\tilde{\mathbf{t}}$ a corresponding set of \tilde{q} plaintexts/ciphertexts,
- $k^* \in \mathcal{K}$, the correct key,
- \tilde{q}_{step} , typically of the order of $\tilde{q}/100$ (number of times the success rate is computed),
- M , the number of experiments

output: $\widehat{\text{SR}}_{k^*}$, the empirical rate of MIA (computed as per (10))

```
1  $\widehat{\text{SR}}_{k^*} = \{0, \dots, 0\}$  // Initialization of  $m/m_{\text{step}}$  values to zero
2 foreach experiment  $\in \{1, \dots, M\}$  do
3   PMF[ $t$ ][ $x$ ] = 0,  $\forall t \in \mathbb{F}_2^n, x \in \mathcal{X}$ 
4   foreach step  $\in \{1, \dots, \tilde{q}/\tilde{q}_{\text{step}}\}$  do
5     for  $i \in \{1 + (\text{step} - 1) \times \tilde{q}_{\text{step}}, \dots, \text{step} \times \tilde{q}_{\text{step}}\}$  do
6       PMF[ $t_i$ ][ $x_i$ ] += 1
7     end
8     for  $k \in \mathcal{K}$  do // Key enumeration
9       ++ score $_k$  = MIA-DISTINGUISHER(PMF,  $k$ ) ++
10      // See MIA-Distinguisher
11      score $_k$  = MIA-DISTINGUISHER(PMF,  $k$ ) // Function at
12      page 19
13     end
14     if arg max $_{k \in \mathcal{K}}$  score $_k$  =  $k^*$  then
15       |  $\widehat{\text{SR}}_{k^*}[\text{step}] += \frac{1}{M}$ 
16     end
17 end
18 return  $\widehat{\text{SR}}_{k^*}$  // The empirical Success Rate
```

Algorithm 1 illustrates the fast computation process for MIA while Algorithm 2 computes the success rate of MIA. Algorithm 2 calls the function MIA-Distinguisher as a subroutine. This last function corresponds to the of the computation of fast MIA (Algorithm 1). However, it is optimized as follows:

- The values of $\tilde{\mathbb{P}}(x)$ and \tilde{q} do not impact the result, hence they are not computed. This means that lines 4–8 of Algorithm 1 are not part of Algorithm MIA-Distinguisher, and that in the accumulation of $\tilde{I}(\tilde{\mathbf{x}}, \tilde{\mathbf{y}}(k))$ at line 15 of Function MIA-Distinguisher, the terms $\tilde{\mathbb{P}}(x)$ and \tilde{q} (present at line 25 of Algorithm 1), are simply dropped.
- In the line 17 of MIA-Distinguisher, we subtract the term which corresponds to the denominator $\tilde{\mathbb{P}}(y)$ of line 25 of Algorithm 1. Notice that all the parameters of the logarithms are now integers. We can thus tabulate the logarithms in a table $\log[i]$, for $i = 1, \dots, \tilde{q}$. Incidentally, the basis of the logarithm can be arbitrarily chosen. If \tilde{q} is really large, say larger than 10 millions, then $\log[i]$ can be precomputed from all $i < 10^6$, and evaluated otherwise, since anyhow the call of \log for large values is restricted to the case of $\tilde{\mathbb{P}}(y)$ which is expected to be way larger than any $\tilde{\mathbb{P}}(x, y)$.

Function MIA-Distinguisher

input : $\text{PMF}[t][x] \in \mathbb{N}_2^{\mathbb{F}_2^n \times \mathcal{X}}$, a non-normalized bi-dimensional histogram,
 $k \in \mathcal{K}$, a key guess

output: A score, affinely proportional to MIA (computed as per (10)), with the same (irrelevant) affine scaling factors for all the keys

```
1  $\forall x \in \mathcal{X}, y \in \mathcal{Y}, \tilde{\mathbb{P}}(x, y) = 0$  //  $\tilde{\mathbb{P}}(x, y)$  holds  $m\tilde{\mathbb{P}}(x, y)$ , cf. (8)
2 for  $t \in \mathbb{F}_2^n$  do
3   | for  $x \in \mathcal{X}$  do
4     |  $\tilde{\mathbb{P}}(x, \varphi(f(k, t))) += \text{PMF}[t][x]$  //  $y = \varphi(f(k, t))$ , cf. (1)
5     | end
6   end
7    $\tilde{I}(\tilde{\mathbf{x}}, \tilde{\mathbf{y}}(k)) = 0$  // Quantity actually affine with  $\tilde{I}(\tilde{\mathbf{x}}, \tilde{\mathbf{y}}(k))$ 
8   for  $y \in \mathcal{Y}$  do
9     |  $\tilde{\mathbb{P}}(y) = 0$  //  $\tilde{\mathbb{P}}(y)$  holds  $m\tilde{\mathbb{P}}(y)$ , cf. (7)
10    | for  $x \in \mathcal{X}$  do
11      |  $\tilde{\mathbb{P}}(y) += \tilde{\mathbb{P}}(x, y)$ 
12      | end
13      | for  $x \in \mathcal{X}$  do
14        | if  $\tilde{\mathbb{P}}(x, y) \neq 0$  then //  $\tilde{\mathbb{P}}(x, y) \neq 0 \implies (\tilde{\mathbb{P}}(x) \neq 0 \wedge \tilde{\mathbb{P}}(y) \neq 0)$ 
15          |  $\tilde{I}(\tilde{\mathbf{x}}, \tilde{\mathbf{y}}(k)) += \tilde{\mathbb{P}}(x, y) \cdot \log[\tilde{\mathbb{P}}(x, y)]$ 
16          | end
17          |  $\tilde{I}(\tilde{\mathbf{x}}, \tilde{\mathbf{y}}(k)) -= \tilde{\mathbb{P}}(x) \cdot \log[\tilde{\mathbb{P}}(y)]$ 
18        | end
19      | end
20 return  $\tilde{I}(\tilde{\mathbf{x}}, \tilde{\mathbf{y}}(k))$ 
```

5.3 Standard computation algorithm for MIA

The standard computation for MIA unfolds as in Algorithm 3. This algorithm outputs exactly the same as Algorithm 1 but is slower for two reasons:

1. All the \tilde{q} samples are scanned for each key hypothesis;
2. Probability mass functions are normalized. Now, divisions are costly, and also they require a conversion from integer to floating point numbers;

6 Conclusion

We derived MIA anew as the distinguisher which maximizes the success rate when the exact probabilities are replaced by online estimations. This suggests that MIA is an interesting alternative when the attacker is not able to exactly determine the link between the measured leakage and the leakage model. This situation can either result from an unknown deterministic part or from an unknown noise distribution. We have proved that, if the number of traces is greater than the number of possible values of x and y , the MIA is faster in terms of logarithm computations.

Algorithm 3 Standard computation algorithm for MIA

input : $\tilde{\mathbf{x}}$ a set of m traces which take discrete values,
 $\tilde{\mathbf{t}}$ a corresponding set of m plaintexts/ciphertexts
output: $(\tilde{I}(\tilde{\mathbf{x}}, \tilde{\mathbf{y}}(k)))_{k \in \mathcal{K}}$

```
1  $\tilde{I}(\tilde{\mathbf{x}}, \tilde{\mathbf{y}}(k)) = 0, \forall x \in \mathcal{X}, k \in \mathcal{K}$ 
2 for  $k \in \mathcal{K}$  do // Key enumeration
   // From  $\tilde{\mathbf{x}}$  and  $\tilde{\mathbf{y}}$ , build a hash table  $\text{PMF}[y][x]$  (i.e., an
   histogram)
3   for  $i \in \{1, \dots, m\}$  do
4     |  $\text{PMF}[\varphi(f(k, t_i))][x_i] += 1$  //  $y = \varphi(f(k, t))$ , cf. (1)
5   end
6    $\forall x \in \mathcal{X}, y \in \mathcal{Y}, \tilde{\mathbb{P}}(x, y) = 0$  // cf. (8)
7   for  $y \in \mathcal{Y}$  do
8     | for  $x \in \mathcal{X}$  do
9       |  $\tilde{\mathbb{P}}(x, y) = \frac{1}{m} \text{PMF}[y][x]$ 
10    | end
11   end
12   for  $y \in \mathcal{Y}$  do
13     |  $\tilde{\mathbb{P}}(y) = 0$  // cf. (7)
14     | for  $x \in \mathcal{X}$  do
15       |  $\tilde{\mathbb{P}}(y) += \tilde{\mathbb{P}}(x, y)$ 
16     | end
17   end
18   for  $x \in \mathcal{X}$  do
19     |  $\tilde{\mathbb{P}}(x) = 0$  // cf. (7)
20     | for  $y \in \mathcal{Y}$  do
21       |  $\tilde{\mathbb{P}}(x) += \tilde{\mathbb{P}}(x, y)$ 
22     | end
23   end
24   for  $y \in \mathcal{Y}$  do
25     | for  $x \in \mathcal{X}$  do
26       | // Nota bene:  $(\tilde{\mathbb{P}}(x) = 0 \vee \tilde{\mathbb{P}}(y) = 0) \implies \tilde{\mathbb{P}}(x, y) = 0$ 
27       | if  $\tilde{\mathbb{P}}(x) \neq 0$  and  $\tilde{\mathbb{P}}(y) \neq 0$  then
28         |  $\tilde{I}(\tilde{\mathbf{x}}, \tilde{\mathbf{y}}(k)) += \tilde{\mathbb{P}}(x, y) \log_2 \left( \frac{\tilde{\mathbb{P}}(x, y)}{\tilde{\mathbb{P}}(x)\tilde{\mathbb{P}}(y)} \right)$ 
29         | end
30     | end
31   end
32 return  $(\tilde{I}(\tilde{\mathbf{x}}, \tilde{\mathbf{y}}(k)))_{k \in \mathcal{K}}$  // As in (10)
```

We have presented two practical case-studies in which MIA can indeed be more efficient than CPA or LRA. The first scenario is for non-Gaussian noise but known deterministic leakage model. The second scenario is for Gaussian noise with unknown deterministic leakage model, where one leverages a challenging leakage function which results in failure for

CPA, and in harsh regression using LRA. Incidentally, this example is in line with the work carried out by Whitnall and Oswald [21] where a notion of relative margin is used to compare attacks. Our findings go in the same direction using the success rate as a figure of merit to compare attacks.

Finally, we extended the computation trick given for CPA to MIA avoiding the histogram estimation of conditional probabilities for each sub key individually, improving the speed of the computation.

We note that all our results are φ -dependent. It seems obvious that the closer we are to the actual leakage, the better the success rate will be. An open question is to find an analytic way to determine the function model that will provide the highest success rate.

Last, we note that our analysis is monivariate: we consider a leakage which consists in only one value. A future work would be to extend our results to multivariate attacks.

Another topic of research is to carry out practical examples where MIA beats CPA. A viable option would be the exploitation of some specific timing attacks where the behaviour of the processor changes at every start-up.

References

1. Brier, É., Clavier, C., Olivier, F.: Correlation power analysis with a leakage model. In: CHES, Volume 3156 of LNCS, pp. 16–29. Springer, Cambridge (2004)
2. Carbone, M., Tiran, S., Ordas, S., Agoyan, M., Teglia, Y., Ducharme, G.R., Maurine, P.: On adaptive bandwidth selection for efficient MIA. In: Prouff [15], pp. 82–97
3. Casella, G., Berger, R.L.: Statistical inference. Duxbury press. Second edition. ISBN-10: 0534243126 – ISBN-13: 978-0534243128 (2002)
4. Chari, S., Rao, J.R., Rohatgi, P.: Template attacks. In: CHES, Volume 2523 of LNCS, pp. 13–28. Springer, Redwood City (2002)
5. Common criteria consortium: Common criteria (aka CC) for information technology security evaluation (ISO/IEC 15408). Website: <http://www.commoncriteriaportal.org/> (2013)
6. Doget, J., Prouff, E., Rivain, M., Standaert, F.-X.: Univariate side channel attacks and leakage modeling. *J. Cryptogr. Eng.* **1**(2), 123–144 (2011)
7. Durvaux, F., Standaert, F.-X., Veyrat-Charvillon, N.: How to certify the leakage of a chip? In: Nguyen, P.Q., Oswald, E. (eds.) *Advances in Cryptology - EUROCRYPT 2014 - 33rd Annual International Conference on the Theory and Applications of Cryptographic Techniques*, Copenhagen, Denmark, May 11–15, 2014. Proceedings, volume 8441 of *Lecture Notes in Computer Science*, pp. 459–476. Springer (2014)
8. Gierlichs, B., Batina, L., Tuyls, P., Preneel, B.: Mutual information analysis. In: CHES, 10th International Workshop, Volume 5154 of *Lecture Notes in Computer Science*, pp. 426–442. Springer, Washington, D.C. (2008)
9. Heuser, A., Kasper, M., Schindler, W., Stöttinger, M.: A new difference method for side-channel analysis with high-dimensional leakage models. In: Dunkelman, O. (ed.) *CT-RSA*, volume 7178 of *Lecture Notes in Computer Science*, pp. 365–382. Springer (2012)
10. Heuser, A., Rioul, O., Guilley, S.: Good is not good enough - deriving optimal distinguishers from communication theory. In: Batina, L., Robshaw, M. (eds.) *Cryptographic Hardware and Embedded Systems - CHES 2014 - 16th International Workshop*, Busan, South Korea, September 23–26, 2014. Proceedings, volume 8731 of *Lecture Notes in Computer Science*, pp. 55–74. Springer (2014)
11. Lomné, V., Prouff, E., Roche, T.: Behind the scene of side channel attacks. In: Sako, K., Sarkar, P. (eds.) *ASIACRYPT* (1), volume 8269 of *Lecture Notes in Computer Science*, pp. 506–525. Springer (2013)
12. Matsuda, S., Moriai, S.: Lightweight cryptography for the cloud: exploit the power of bitslice implementation. In: Prouff, E., Schaumont, P. (eds.) *Cryptographic Hardware and Embedded Systems - CHES 2012 - 14th International Workshop*, Leuven, Belgium, September 9–12, 2012. Proceedings, volume 7428 of LNCS, pp. 408–425. Springer (2012)
13. Moradi, A., Mousavi, N., Paar, C., Salmasizadeh, M.: A comparative study of mutual information analysis under a Gaussian assumption. In: *WISA (Information Security Applications)*, 10th International

- Workshop), volume 5932 of Lecture Notes in Computer Science, pp. 193–205. Springer, August 25-27, Busan, Korea (2009)
14. De Mulder, E., Gierlichs, B., Preneel, B., Verbauwhede, I.: Practical DPA attacks on MDPL. In: 1st IEEE International Workshop on Information Forensics and Security, WIFS 2009, London, UK, December 6-9, 2009, pp. 191–195. IEEE (2009)
 15. Prouff, E. (ed.): Constructive Side-Channel Analysis and Secure Design - 5th International Workshop, COSADE 2014, Paris, France, April 13-15, 2014, Revised Selected Papers, volume 8622 of Lecture Notes in Computer Science, Springer (2014)
 16. Prouff, E., Rivain, M.: Theoretical and practical aspects of mutual information-based side channel analysis. *Int. J. Appl. Crypt. (IJACT)* **2**(2), 121–138 (2010)
 17. Rebeiro, C., Selvakumar, A.D., Devi, A.S.L.: Bitslice implementation of AES. In: Pointcheval, D., Mu, Y., Chen, K. (eds.) *Cryptology and Network Security, 5th International Conference, CANS 2006, Suzhou, China, December 8-10, 2006, Proceedings*, volume 4301 of Lecture Notes in Computer Science, pp. 203–212. Springer (2006)
 18. Reparaz, O., Gierlichs, B., Verbauwhede, I.: Generic DPA attacks: Curse or blessing? In: Prouff [15], pp. 98–111
 19. Standaert, F.-X., Malkin, T., Yung, M.: A unified framework for the analysis of side-channel key recovery attacks. In: *EUROCRYPT, Volume 5479 of LNCS*, pp. 443–461. Springer, Cologne (2009)
 20. Veyrat-Charvillon, N., Standaert, F.-X.: Mutual information analysis: how, when and why? In: Clavier, C., Gaj, K. (eds.) *Cryptographic Hardware and Embedded Systems - CHES 2009, 11th International Workshop, Lausanne, Switzerland, September 6-9, 2009, Proceedings*, volume 5747 of Lecture Notes in Computer Science, pp. 429–443. Springer (2009)
 21. Whitnall, C., Oswald, E.: A comprehensive evaluation of mutual information analysis using a fair evaluation framework. In: Rogaway, P. (ed.) *CRYPTO*, volume 6841 of Lecture Notes in Computer Science, pp. 316–334. Springer (2011)
 22. Whitnall, C., Oswald, E.: A fair evaluation framework for comparing Side-Channel distinguishers. *J. Crypt. Eng.* **1**(2), 145–160 (2011)
 23. Whitnall, C., Oswald, E., Mather, L.: An exploration of the Kolmogorov-Smirnov test as a competitor to mutual information Analysis. In: Prouff, E. (ed.) *CARDIS*, volume 7079 of Lecture Notes in Computer Science, pp. 234–251. Springer (2011)
 24. Whitnall, C., Oswald, E., Standaert, F.-X.: The myth of generic DPA ... and the magic of learning. In: Benaloh, J. (ed.) *CT-RSA*, volume 8366 of Lecture Notes in Computer Science, pp. 183–205. Springer (2014)